



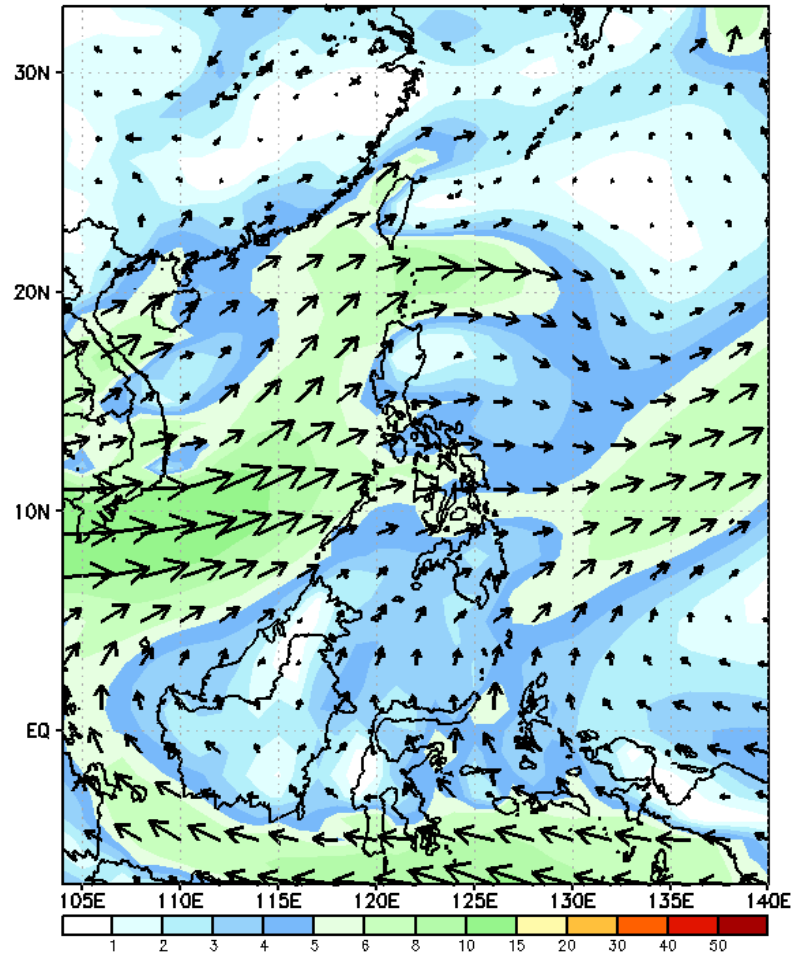
Week 1 & Week 2 Forecast for the Philippines using GEFS Model



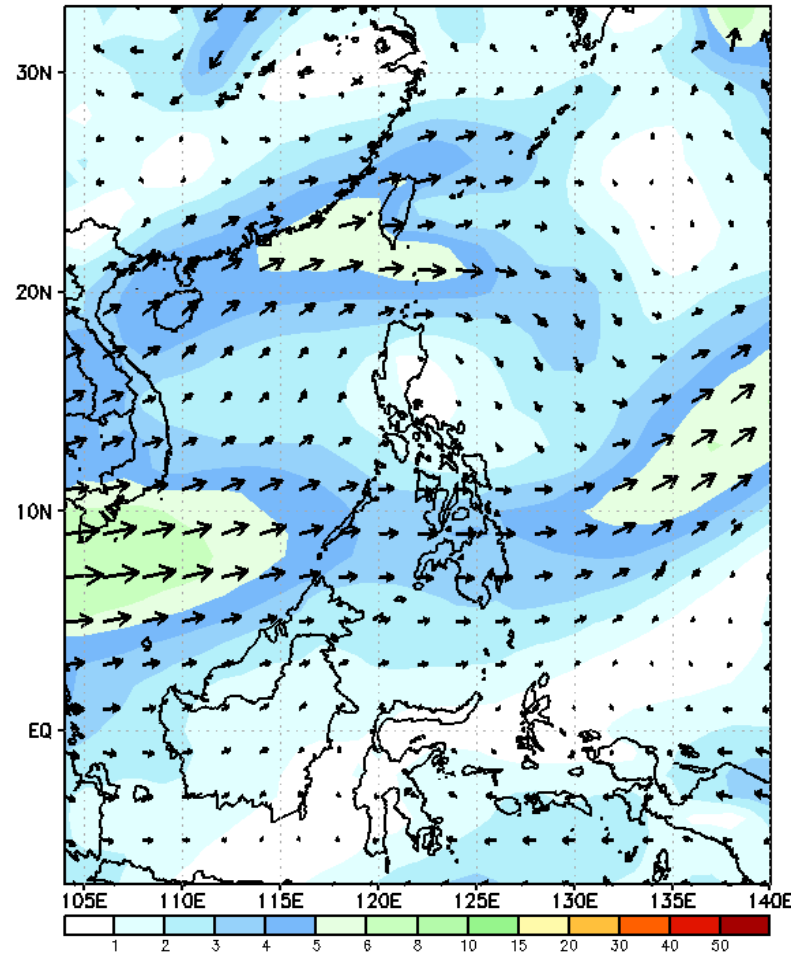
GEFS Week-1 Forecasts: Wind Forecast

Week 1: Aug 14-20, 2023

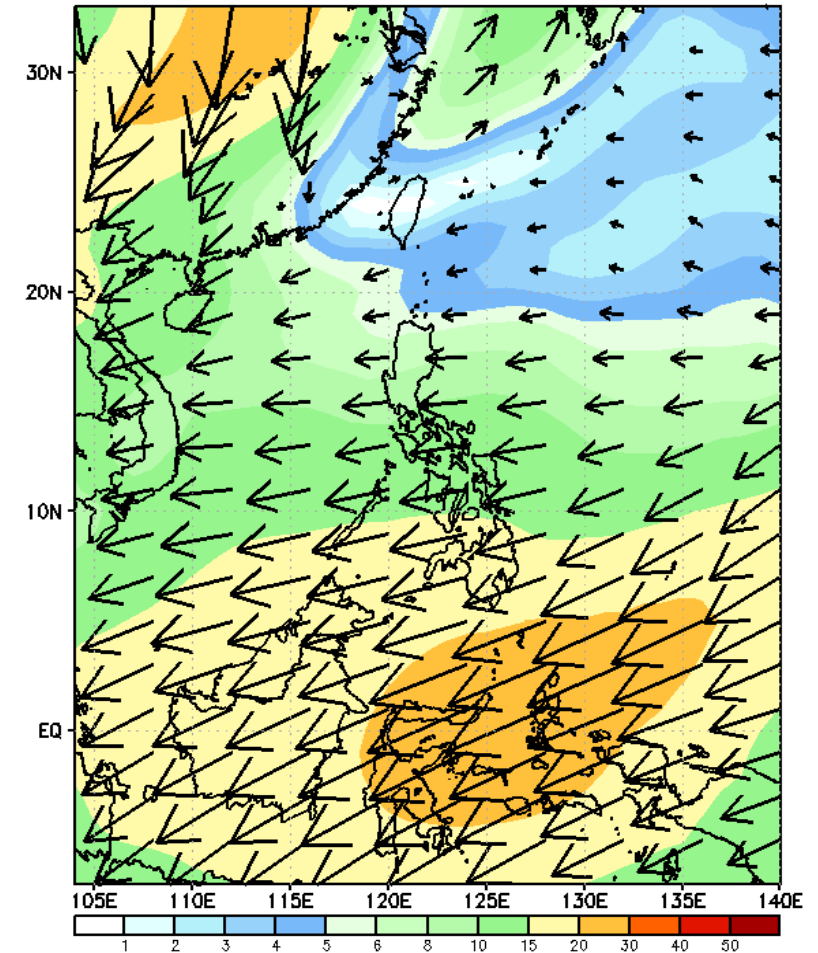
GEFS Week-1 850-hPa Wind Total
Valid: 20230814 - 20230820



GEFS Week-1 700-hPa Wind Total
Valid: 20230814 - 20230820



GEFS Week-1 200-hPa Wind Total
Valid: 20230814 - 20230820



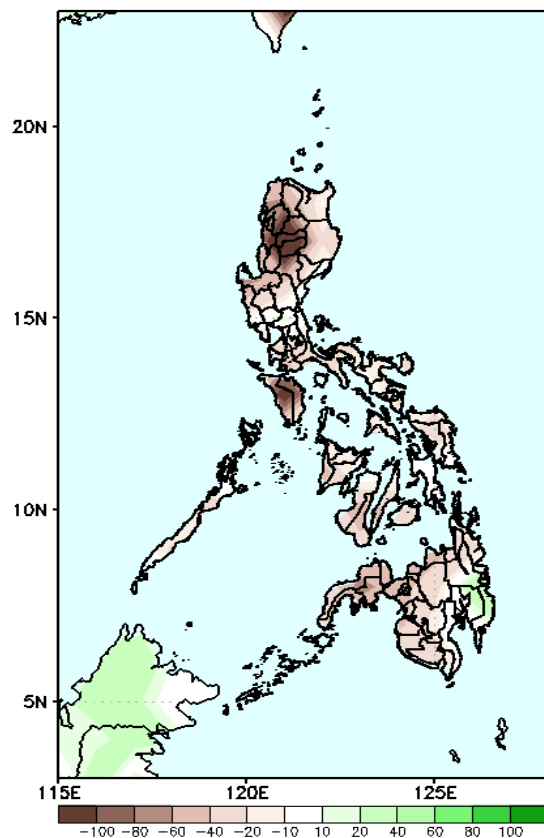
Southwest Monsoon is forecasted to prevail over some areas in western Luzon, western Visayas and Zamboanga Peninsula.

Precipitation Anomaly and Exceedance Probability > 25/50 mm

- Very high probability
- High Probability
- Moderate Probability
- Low Probability

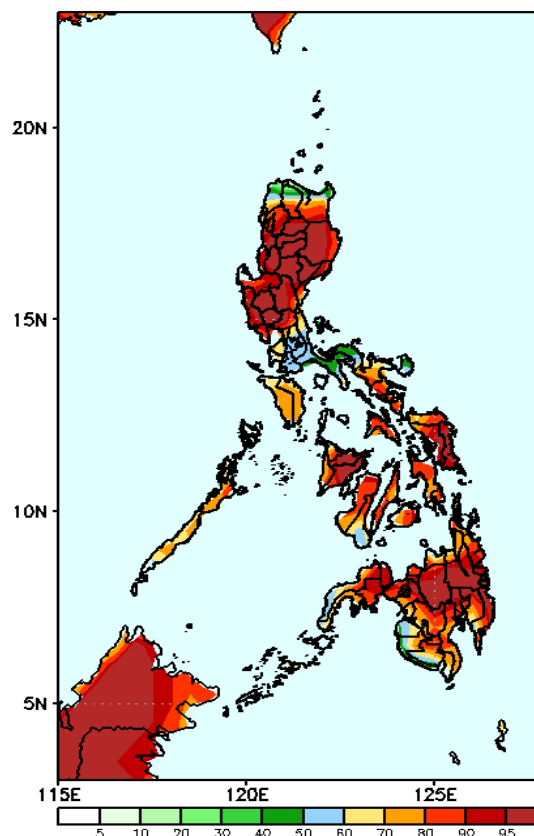
Week 1: Aug 14-20, 2023

GEFS Week-1 Precip Anomaly
Valid: 20230814 - 20230820



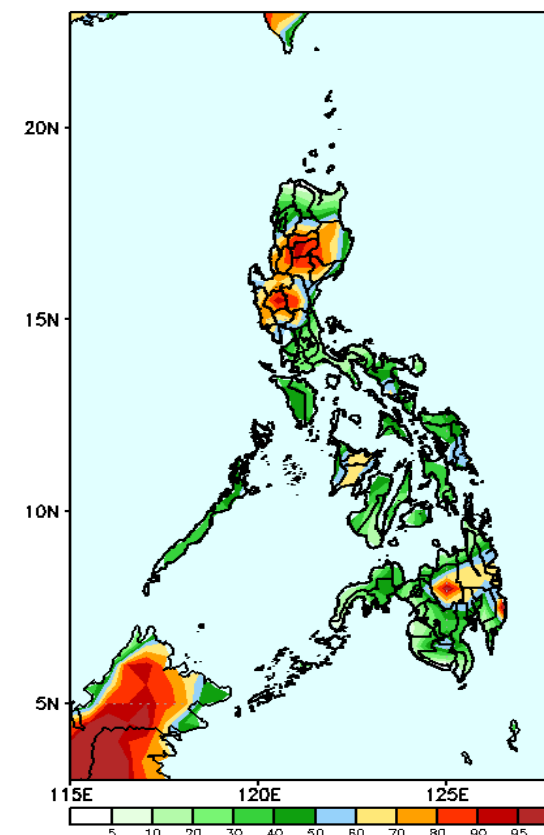
Rainfall deficit of up to 100mm is expected in most parts of Ilocos Region, CAR and Mindoro; 40-80mm for the remaining parts of the country except in Davao Region where 20-40mm increase of rainfall will be likely.

GEFS Week-1 Exceedance Prob. > 25mm
Valid: 20230814 - 20230820



High to a very high probability to exceed 25mm over most parts of the country except Batangas, Quezon, Camarines Norte and Catanduanes where moderate likelihood will be likely.

GEFS Week-1 Exceedance Prob. > 50mm
Valid: 20230814 - 20230820



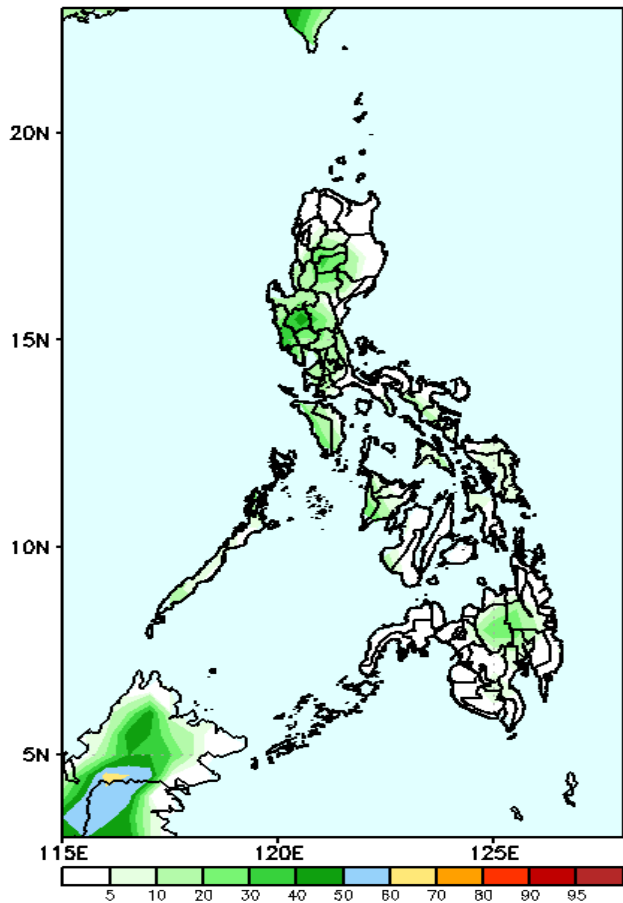
Moderate to high probability to exceed 50mm of rainfall over Central Luzon, the southern portion of Northern Luzon, Panay Island, Bukidnon and Agusan del Sur while low likelihood over the rest of the country.

Exceedance Probability > 100/150/200 mm

Week 1: Aug 14-20, 2023

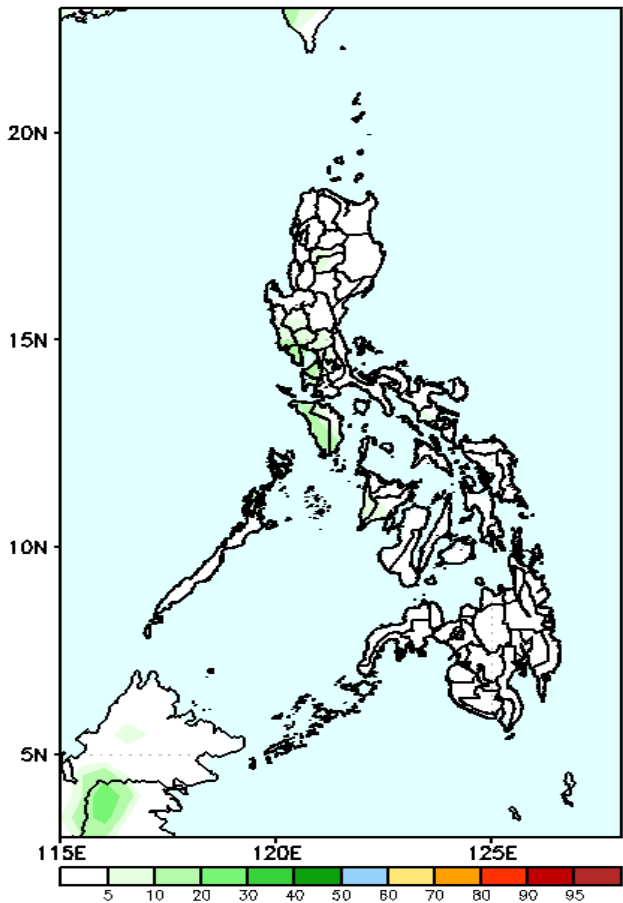
- Very high probability
- High Probability
- Moderate Probability
- Low Probability

GEFS Week-1 Exceedance Prob. > 100mm
Valid: 20230814 - 20230820



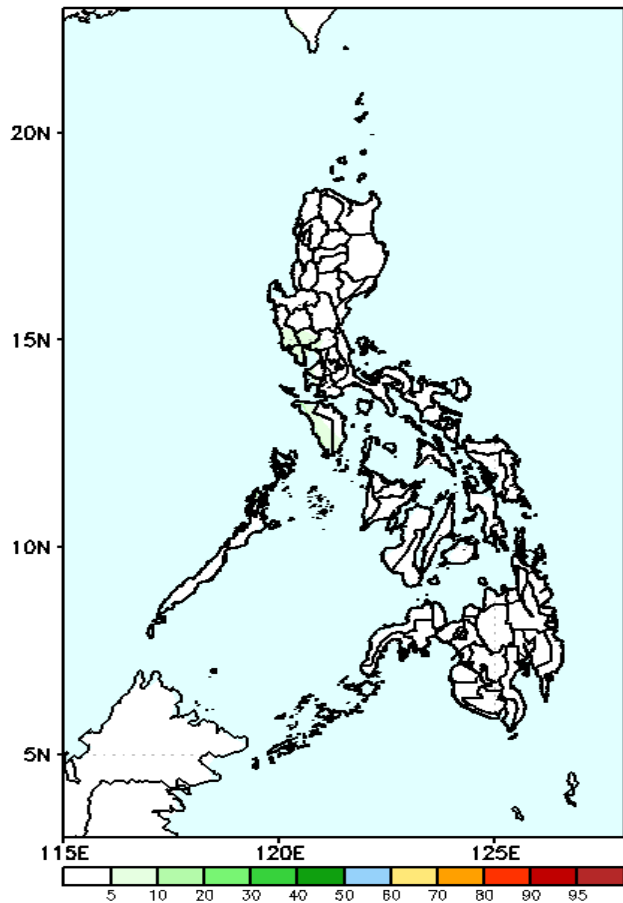
Low probability to exceed 100mm of rainfall over the rest of the country.

GEFS Week-1 Exceedance Prob. > 150mm
Valid: 20230814 - 20230820



Low probability to exceed 150mm of rainfall over the rest of the country.

GEFS Week-1 Exceedance Prob. > 200mm
Valid: 20230814 - 20230820

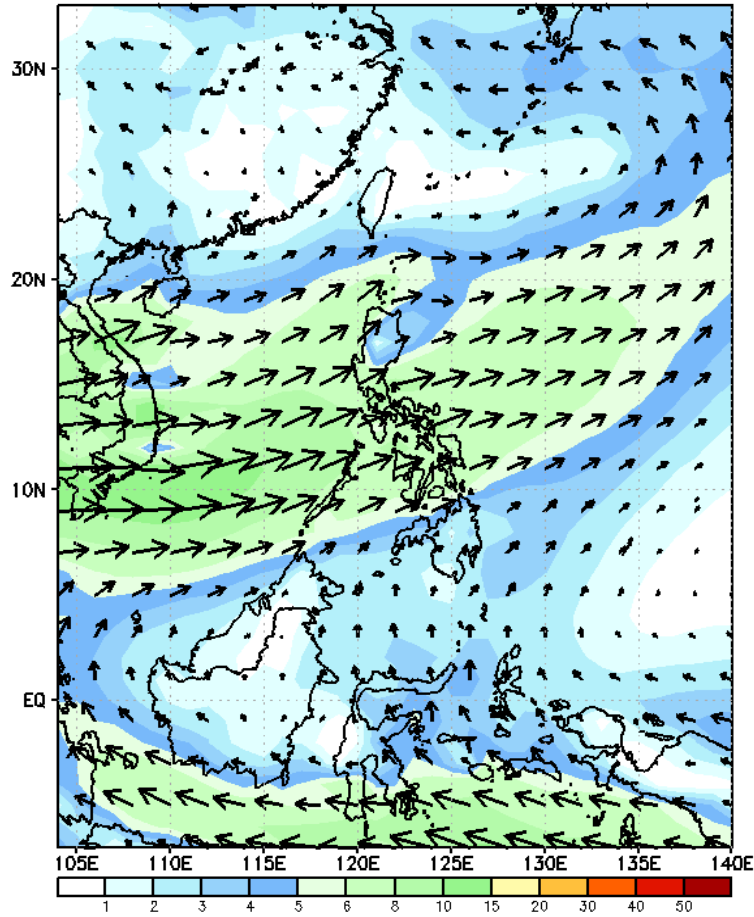


Low probability to exceed 200mm of rainfall over the rest of the country.

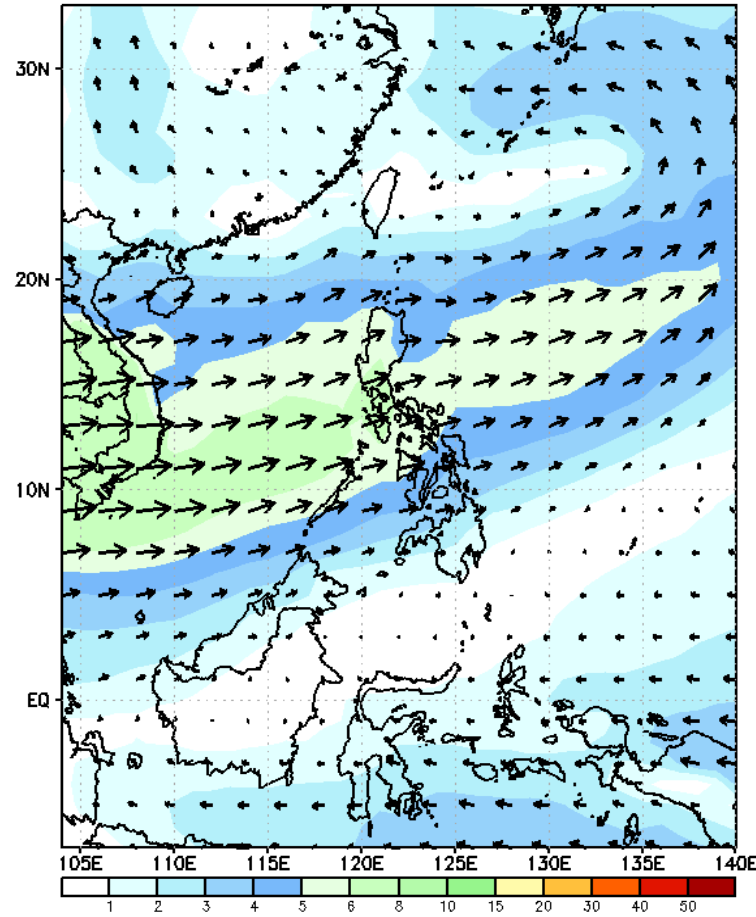
GEFS Week-2 Forecasts: Wind Forecast

Week 2: Aug 21-27, 2023

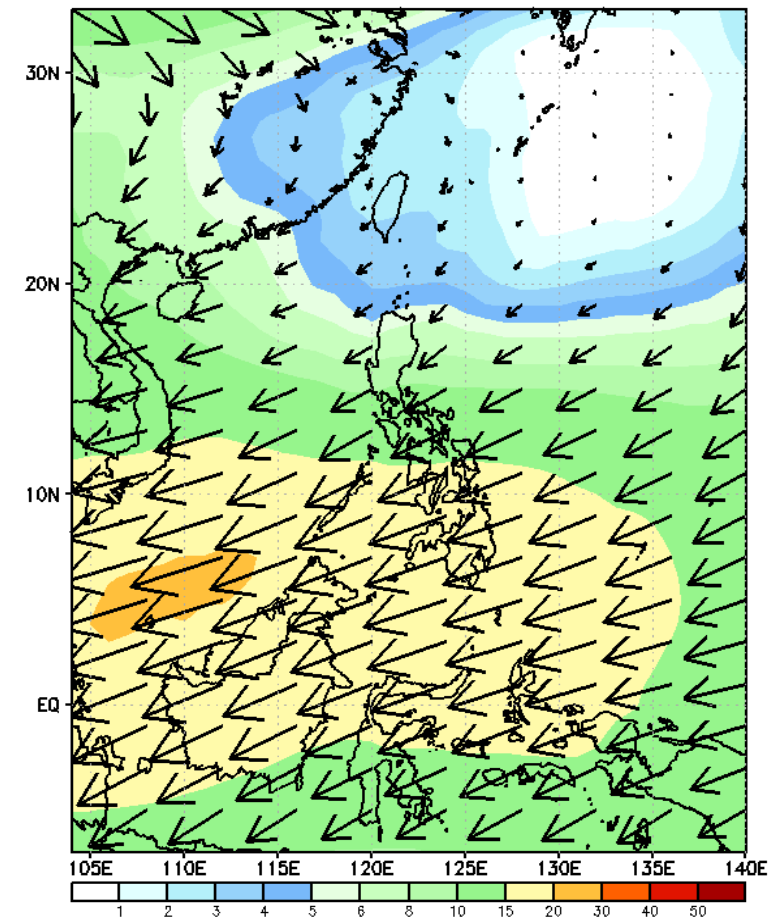
GEFS Week-2 850-hPa Wind Total
Valid: 20230821 - 20230827



GEFS Week-2 700-hPa Wind Total
Valid: 20230821 - 20230827



GEFS Week-2 200-hPa Wind Total
Valid: 20230821 - 20230827



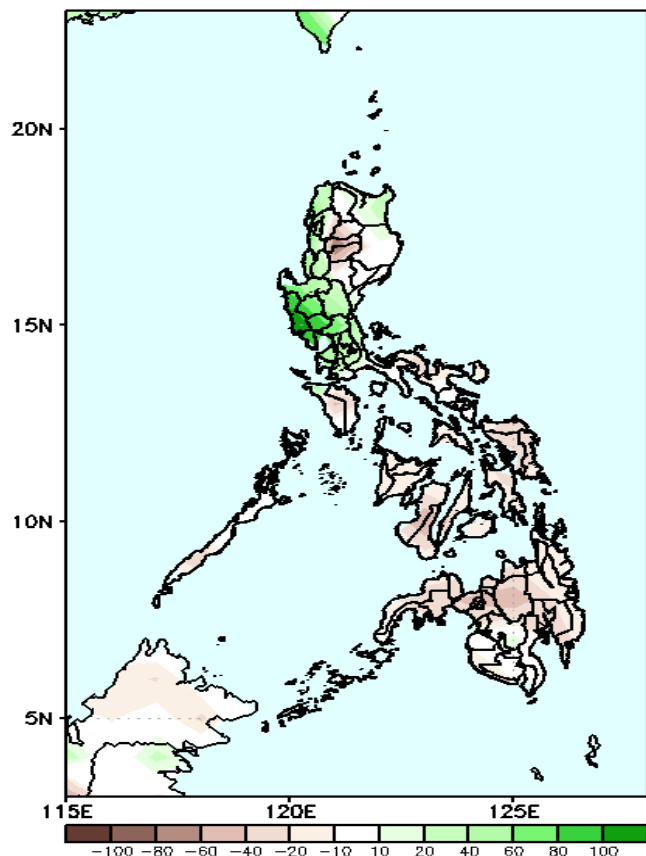
Southwest Monsoon is forecasted to prevail in most parts of Western Luzon and Western Visayas.

Precipitation Anomaly and Exceedance Probability > 25/50 mm



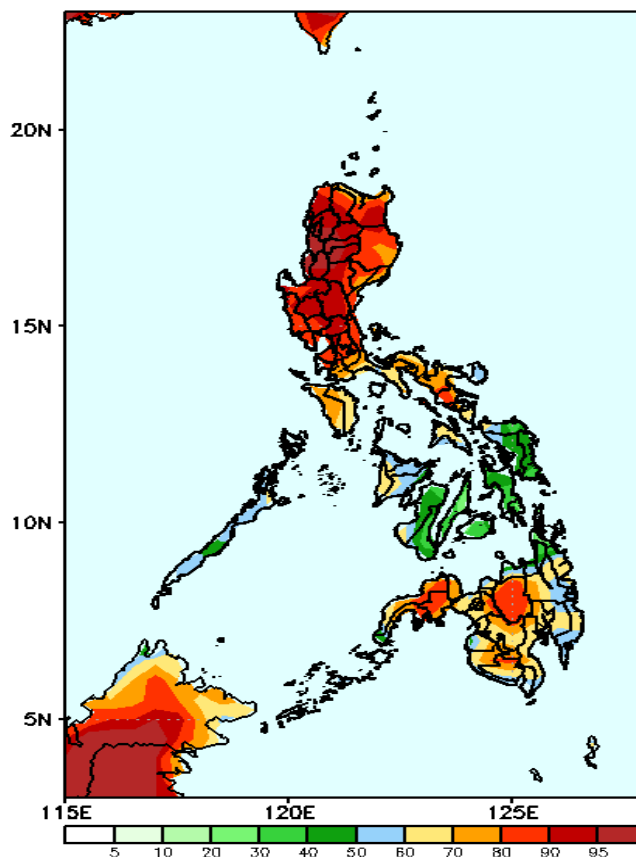
Week 2: Aug 21-27, 2023

GEFS Week-2 Precip Anomaly
Valid: 20230821 - 20230827



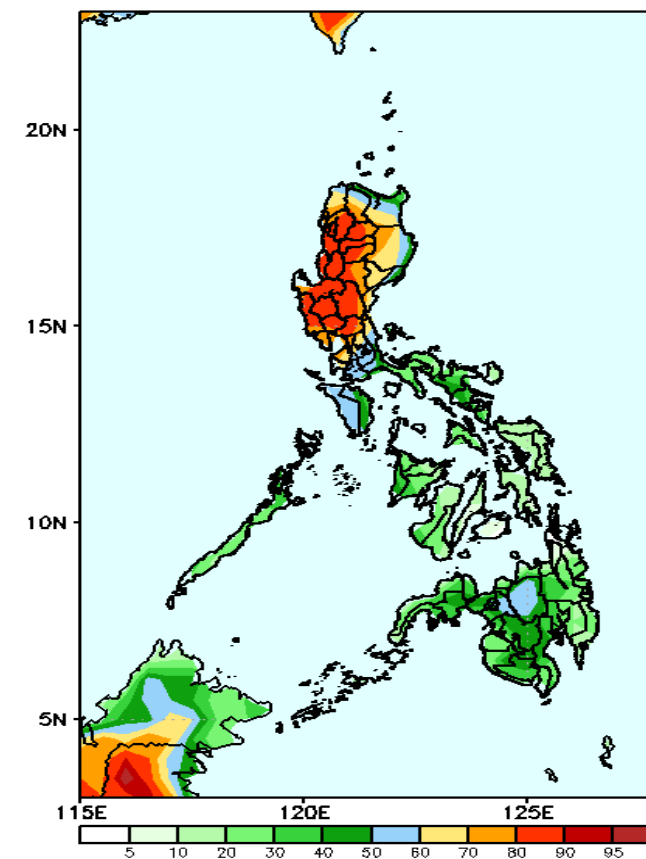
Rainfall deficit of 10-60mm is expected in most parts of the country except in Cagayan, Ilocos, Region, Central Luzon and CALABAR where 20-100mm increase of rainfall will be likely.

GEFS Week-2 Exceedance Prob. > 25mm
Valid: 20230821 - 20230827



High to a very high probability to exceed 25mm over most parts of Luzon and Mindanao while moderate to high likelihood over the Visayas.

GEFS Week-2 Exceedance Prob. > 50mm
Valid: 20230821 - 20230827



High to very high probability to exceed 50mm of rainfall in most parts of Northern and Central Luzon while moderate to high over the rest of the country.

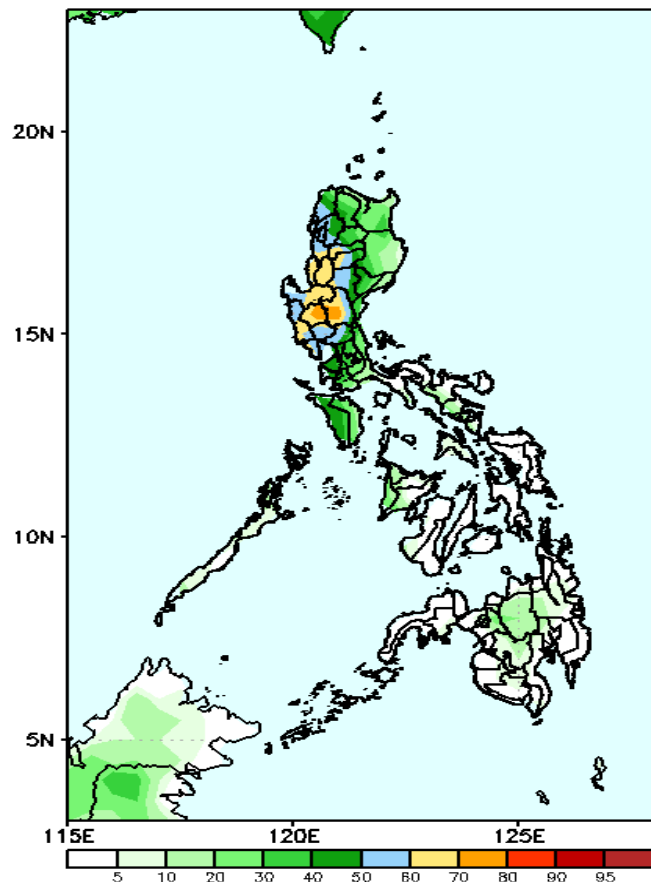


Exceedance Probability > 100/150/200 mm

- Very high probability
- High Probability
- Moderate Probability
- Low Probability

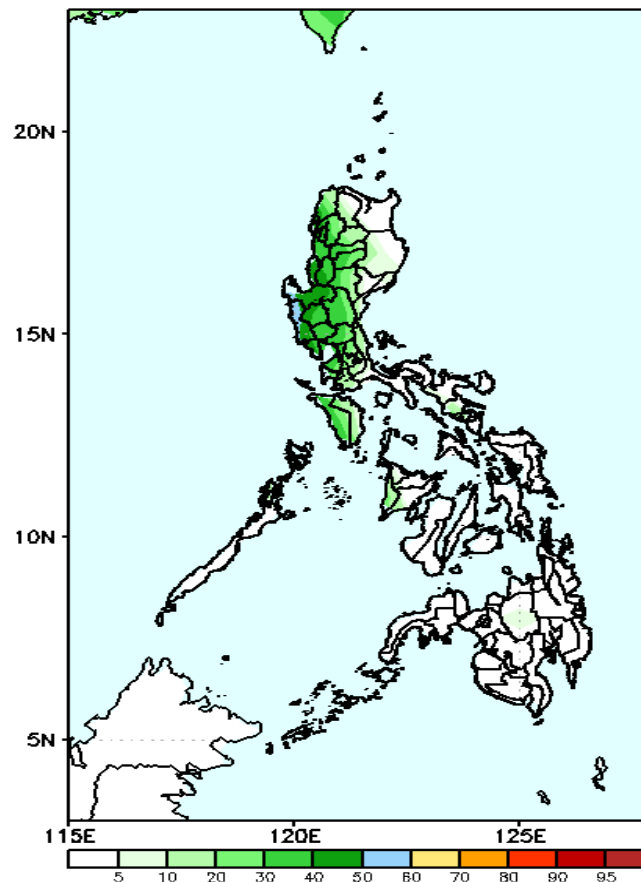
Week 2: Aug 21-27, 2023

GEFS Week-2 Exceedance Prob. > 100mm
Valid: 20230821 - 20230827



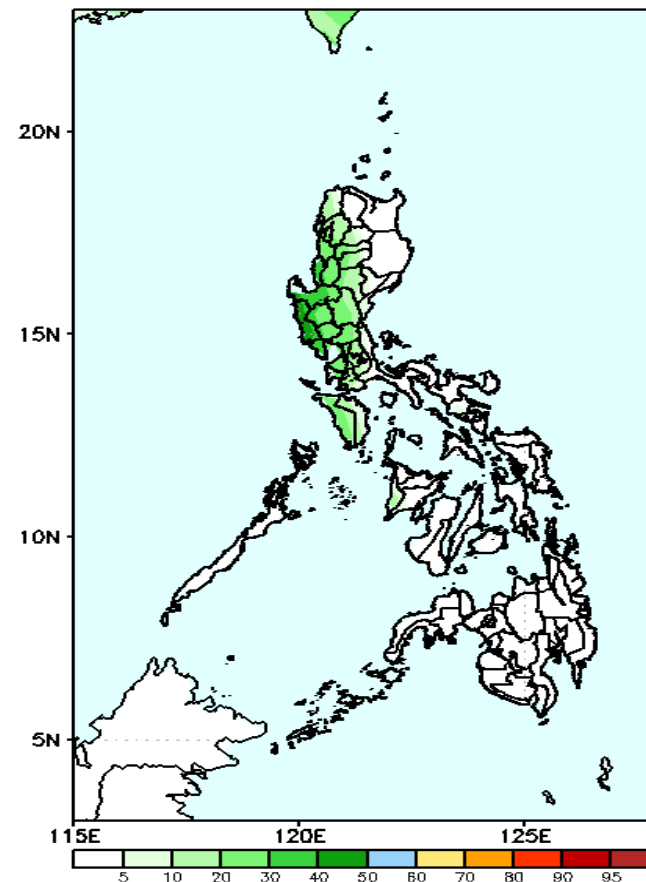
Moderate to high probability to exceed 100mm of rainfall in the western portions of Northern and Central Luzon while low likelihood over the rest of the country.

GEFS Week-2 Exceedance Prob. > 150mm
Valid: 20230821 - 20230827



Low probability to exceed 150mm of rainfall over the rest of the country.

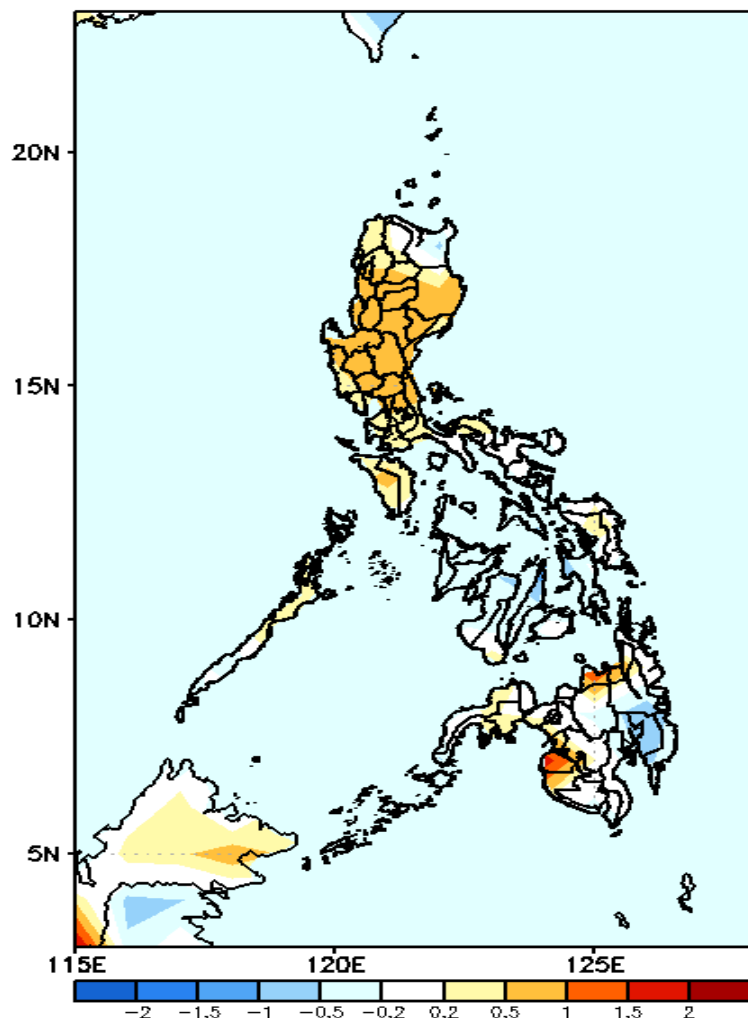
GEFS Week-2 Exceedance Prob. > 200mm
Valid: 20230821 - 20230827



Low probability to exceed 200mm of rainfall over the rest of the country.

GEFS Week-1 & 2 Forecasts: T2m Anomaly

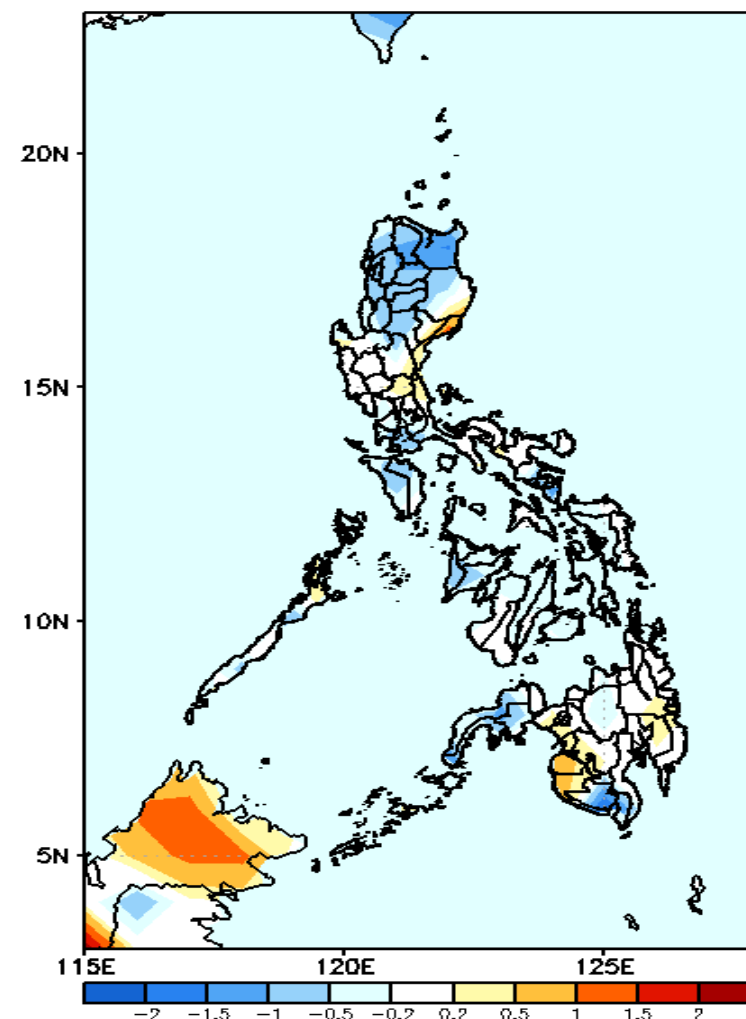
GEFS Week-1 T2m Anomaly
Valid: 20230814 – 20230820



2m Temperature Week 1: Aug 14-20, 2023

Average to slightly warmer to warmer than average surface air temperature will likely experience in most parts of the country; except in Misamis Oriental and Maguindanao (warmer) and Davao Region (slightly cooler)

GEFS Week-2 T2m Anomaly
Valid: 20230821 – 20230827



2m Temperature Week 2: Aug 21-27, 2023

Average to cooler than average surface air temperature will likely experience in most parts of the country except in Aurora, Sultan Kudarat and Maguindanao where slightly warmer to warmer temperature will be likely .