



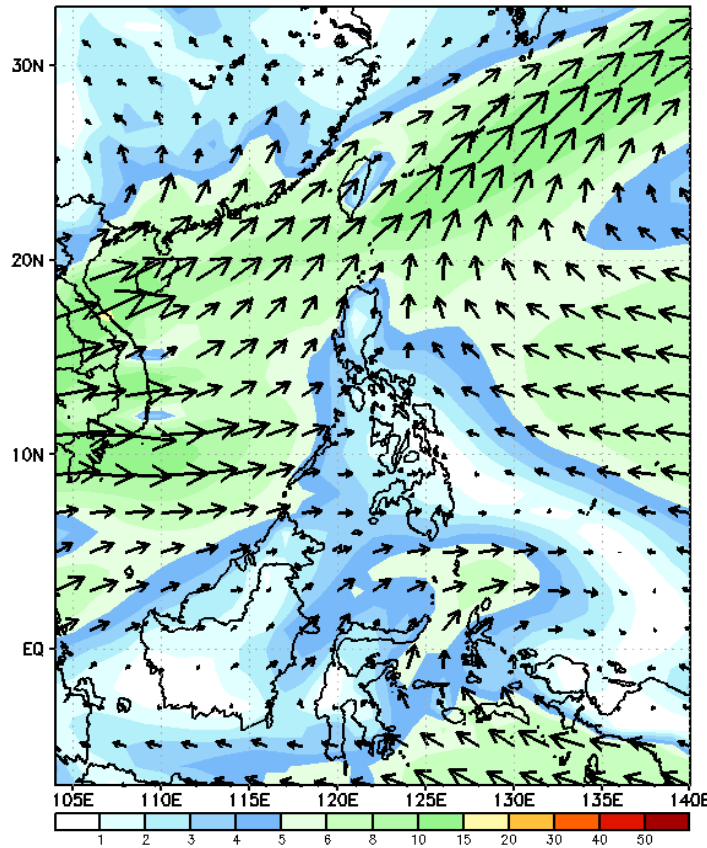
# Week 1 & Week 2 Forecast for the Philippines using GEFS Model



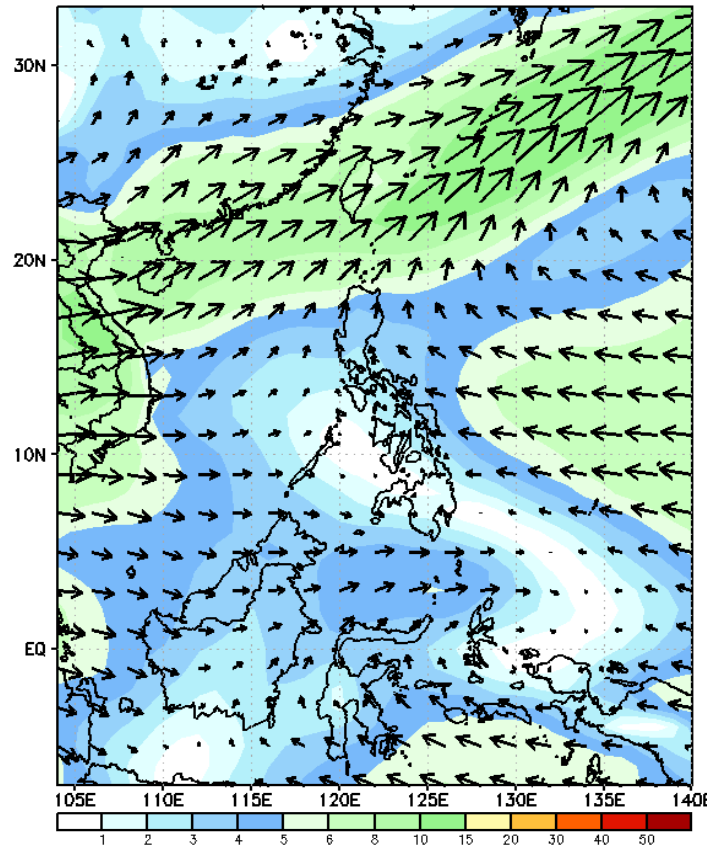
# GEFS Week-1 Forecasts: Wind Forecast

Week 1: June 14 - 20, 2023

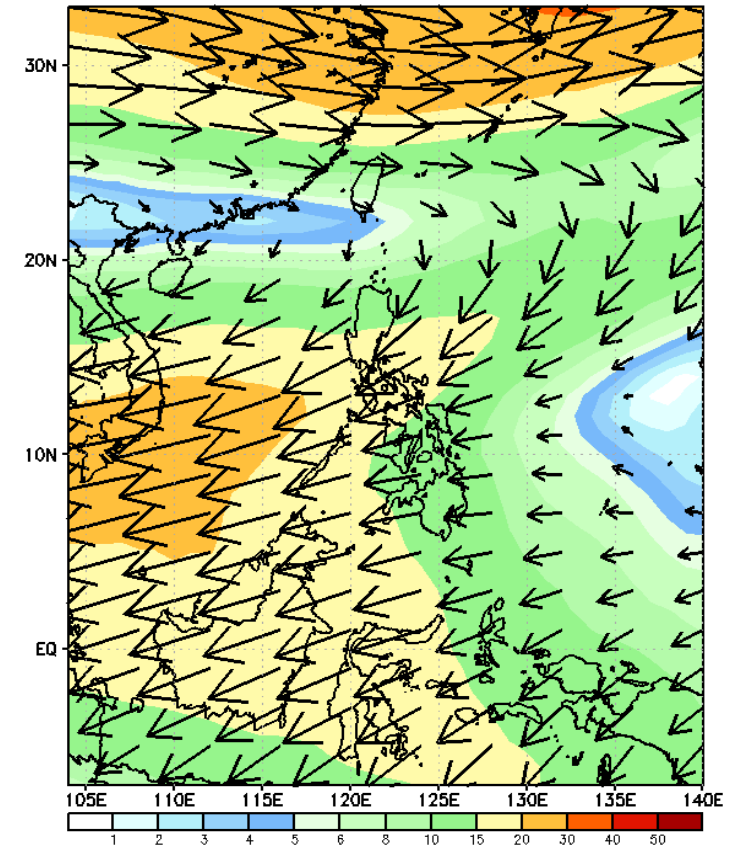
GEFS Week-1 850-hPa Wind Total  
Valid: 20230614 - 20230620



GEFS Week-1 700-hPa Wind Total  
Valid: 20230614 - 20230620



GEFS Week-1 200-hPa Wind Total  
Valid: 20230614 - 20230620



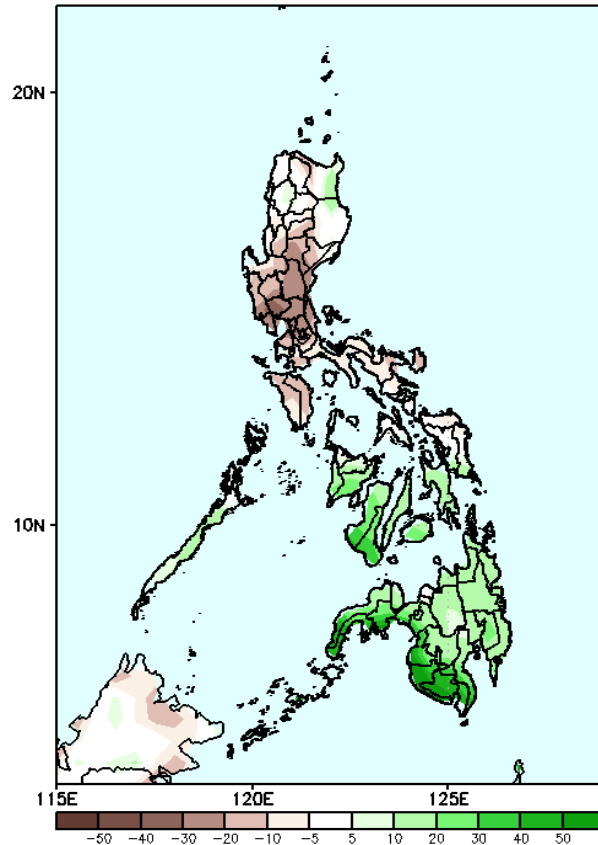
Southwest Monsoon is forecasted to prevail in the western sections of the country while Easterlies will likely affect the eastern section of Luzon and Visayas.

# Precipitation Anomaly and Exceedance Probability > 25/50 mm



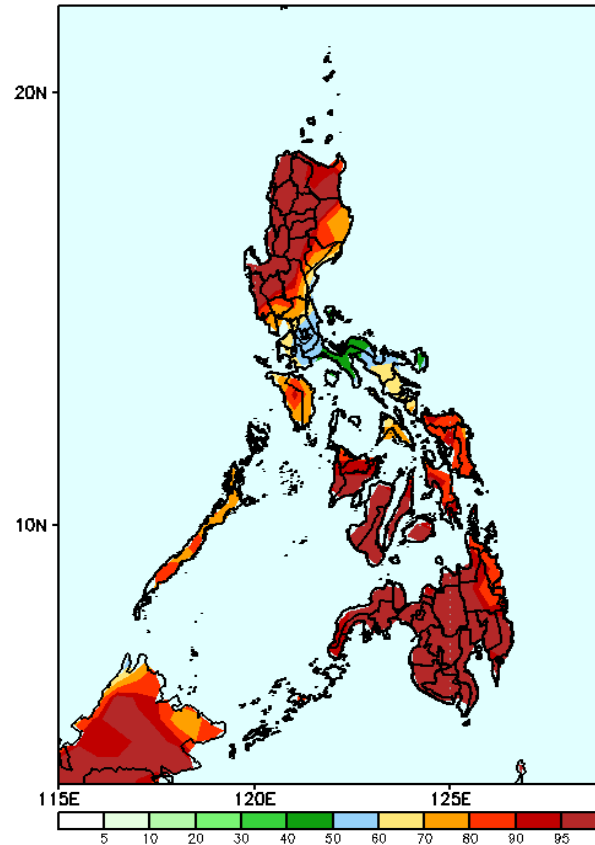
Week 1: June 14 - 20, 2023

GEFS Week-1 Precip. Anomaly  
Valid: 20230614 - 20230620



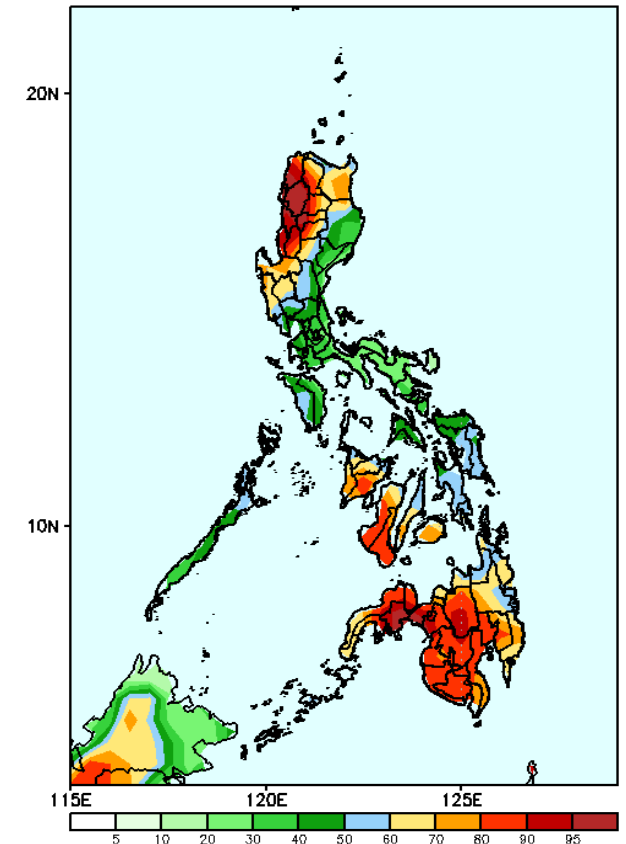
Rainfall deficit of 20-50 mm is expected in most parts of Luzon and Samar provinces while more than 50mm increase in rainfall is expected over the rest of the country.

GEFS Week-1 Exceedance Prob. > 25mm  
Valid: 20230614 - 20230620



High to a very high probability to exceed 25mm of rainfall in most parts of the country except for a moderate to high likelihood over CALABARZON and Bicol region.

GEFS Week-1 Exceedance Prob. > 50mm  
Valid: 20230614 - 20230620



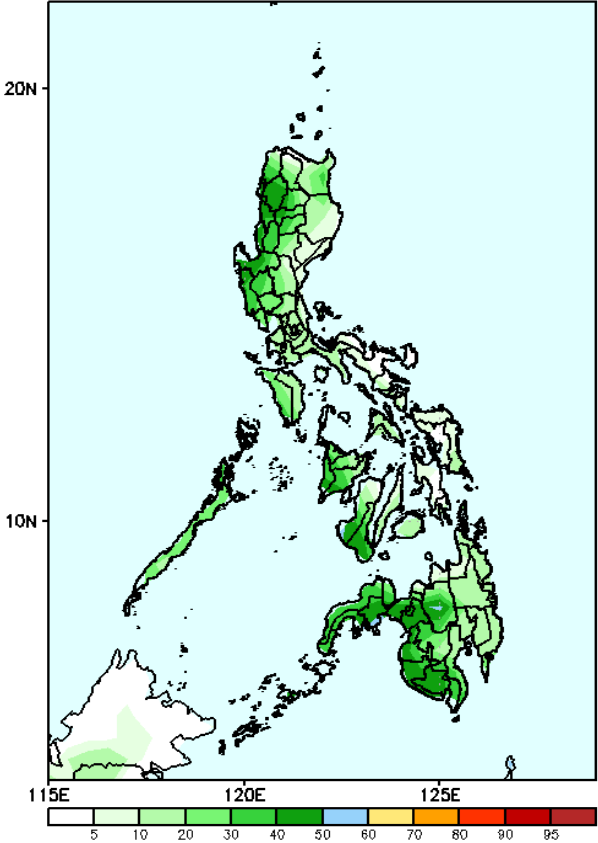
High to a very high probability to exceed 50mm of rainfall in the western sections of Central and Northern Luzon, Western Visayas, and Mindanao while moderate to high likelihood over the rest of the country.

# Exceedance Probability > 100/150/200 mm

Week 1: June 14 - 20, 2023

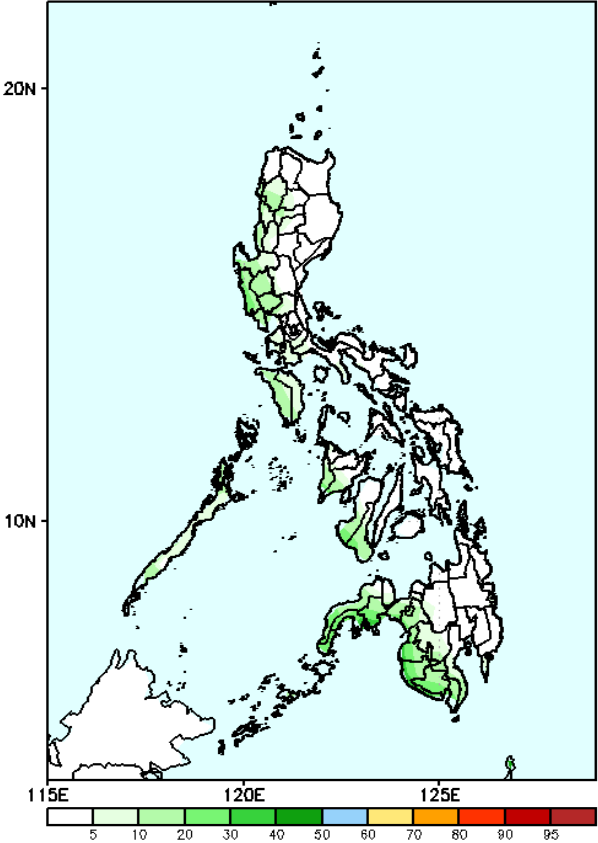
- Very high probability
- High Probability
- Moderate Probability
- Low Probability

GEFS Week-1 Exceedance Prob. > 100mm  
Valid: 20230614 - 20230620



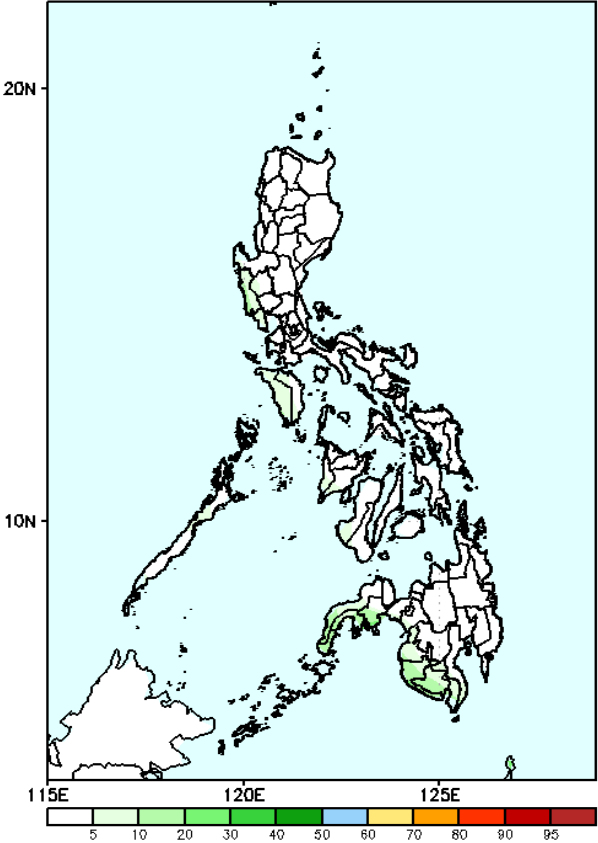
Low to moderate probability to exceed 100mm of rainfall in most parts of the country.

GEFS Week-1 Exceedance Prob. > 150mm  
Valid: 20230614 - 20230620



Low probability to exceed 150mm of rainfall over the rest of the country.

GEFS Week-1 Exceedance Prob. > 200mm  
Valid: 20230614 - 20230620



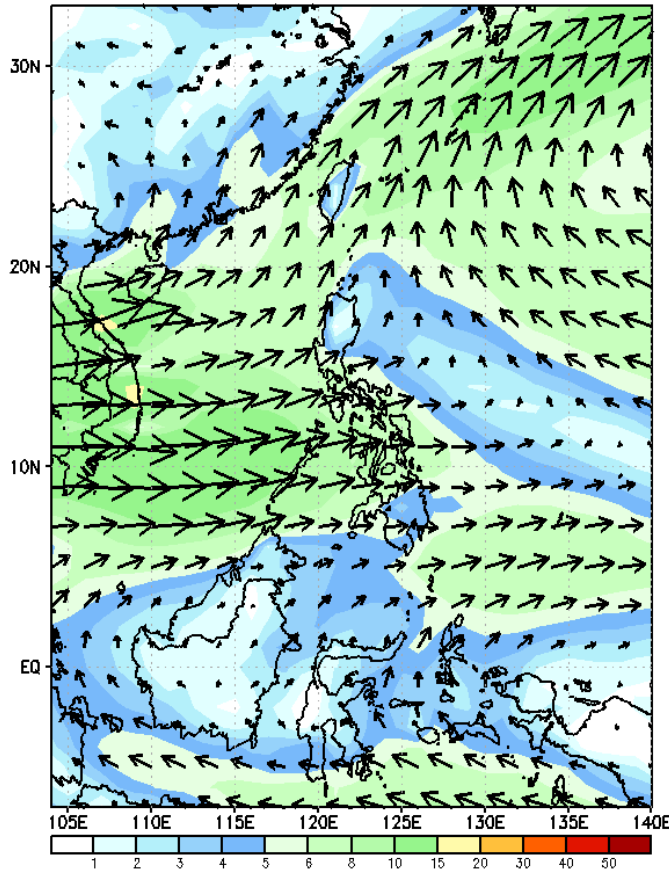
Low probability to exceed 200mm of rainfall over the rest of the country.



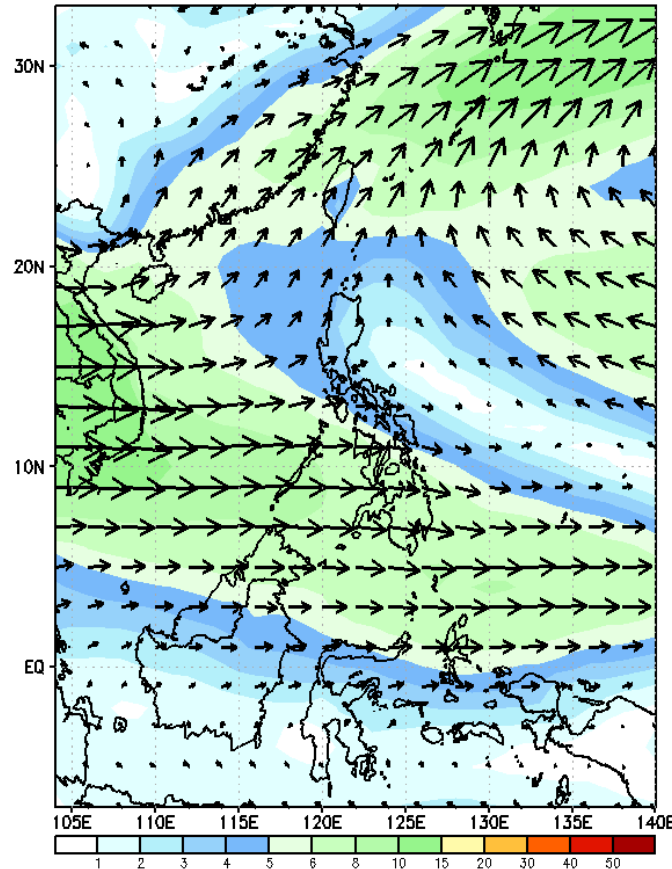
# GEFS Week-2 Forecasts: Wind Forecast

Week 2: June 21-27, 2023

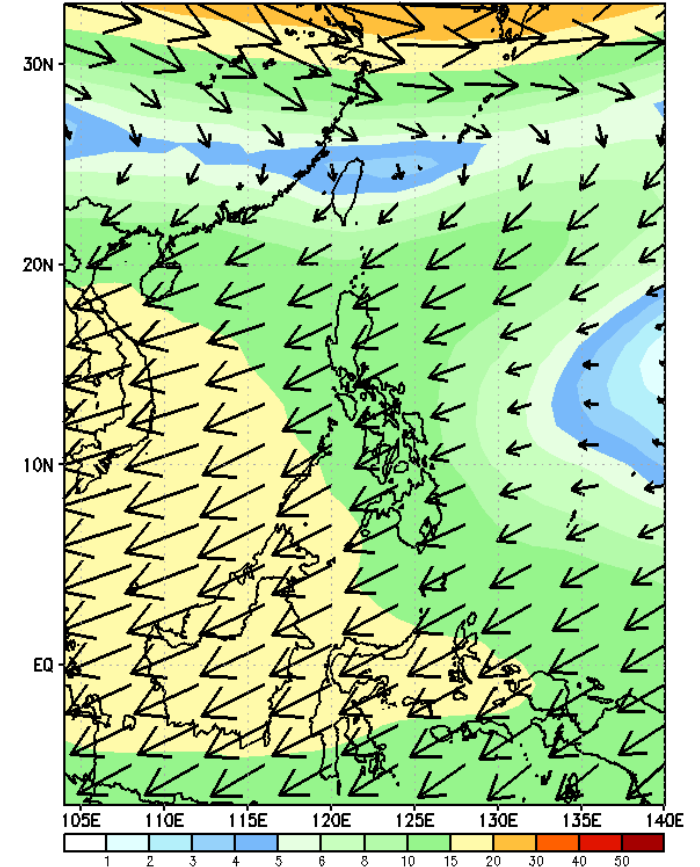
GEFS Week-2 850-hPa Wind Total  
Valid: 20230621 - 20230627



GEFS Week-2 700-hPa Wind Total  
Valid: 20230621 - 20230627

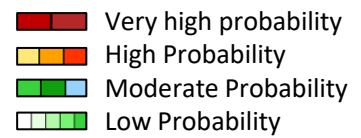


GEFS Week-2 200-hPa Wind Total  
Valid: 20230621 - 20230627



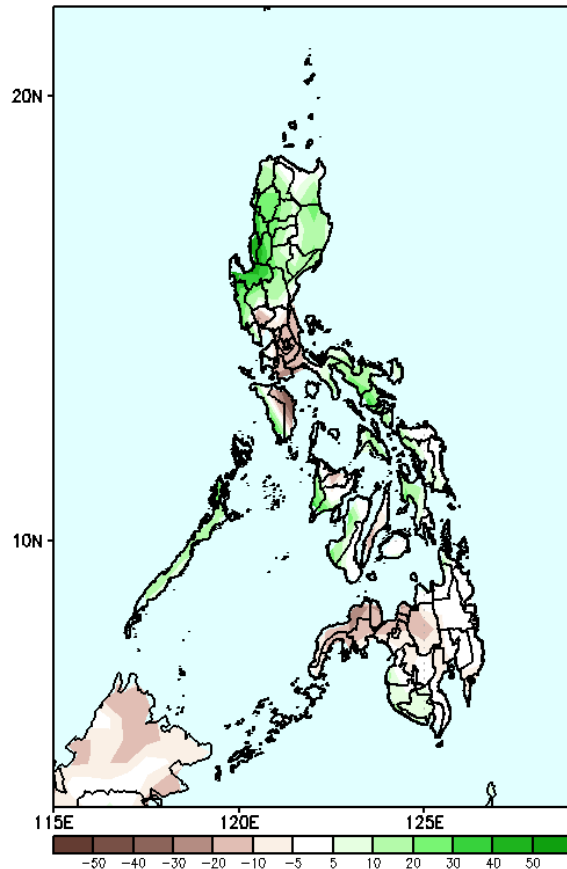
Southwest Monsoon is forecasted to prevail in most parts of the country

# Precipitation Anomaly and Exceedance Probability > 25/50 mm



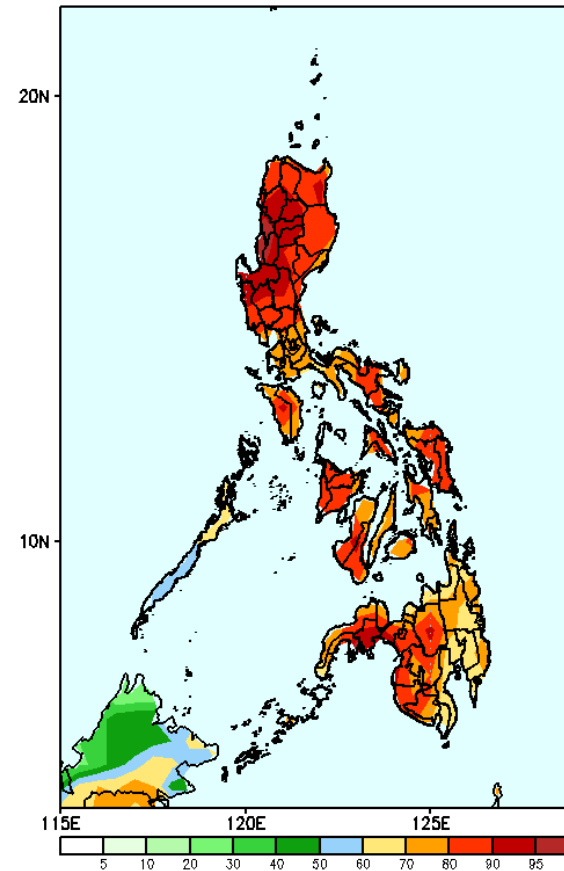
Week 2: June 21-27, 2023

GEFS Week-2 Precip Anomaly  
Valid: 20230621 - 20230627



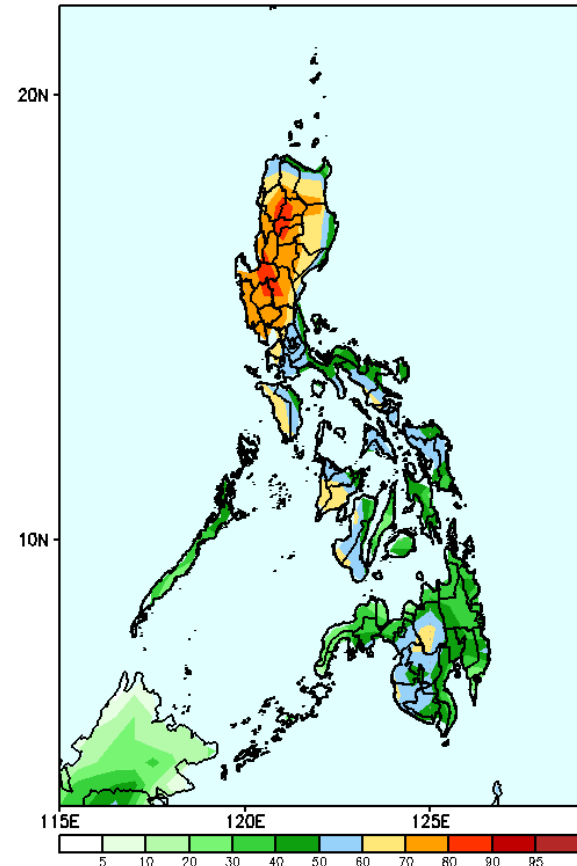
An increase of 20-40 mm is expected in most parts of Northern and Central, Bicol region and most parts of Western Visayas and Leyte while 20-30mm deficit in rainfall is expected over the rest of the country.

GEFS Week-2 Exceedance Prob. > 25mm  
Valid: 20230621 - 20230627



High to a very high probability to exceed 25mm of rainfall across the country except for a moderate chance over the southern portion of Palawan.

GEFS Week-2 Exceedance Prob. > 50mm  
Valid: 20230621 - 20230627



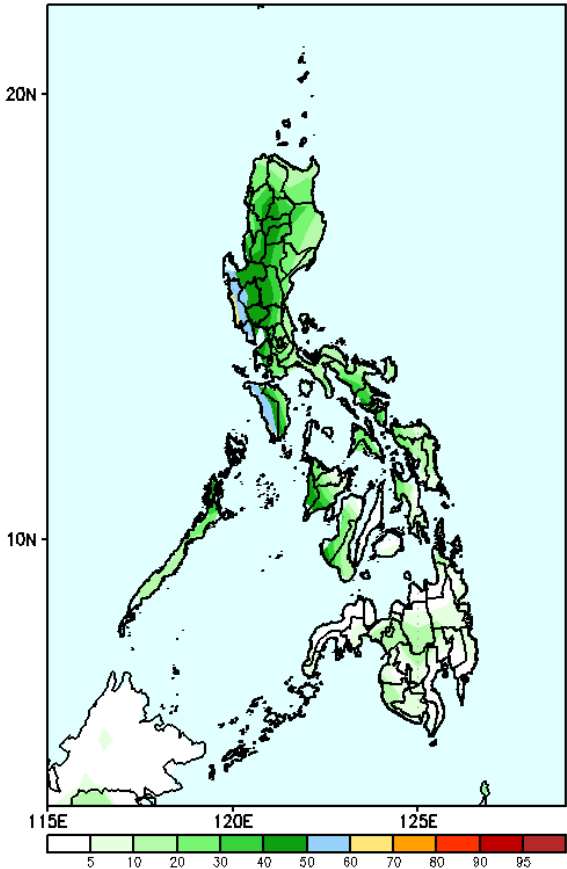
Moderate to high probability to exceed 50mm of rainfall in most parts of the country.

# Exceedance Probability > 100/150/200 mm

Week 2: June 21-27, 2023

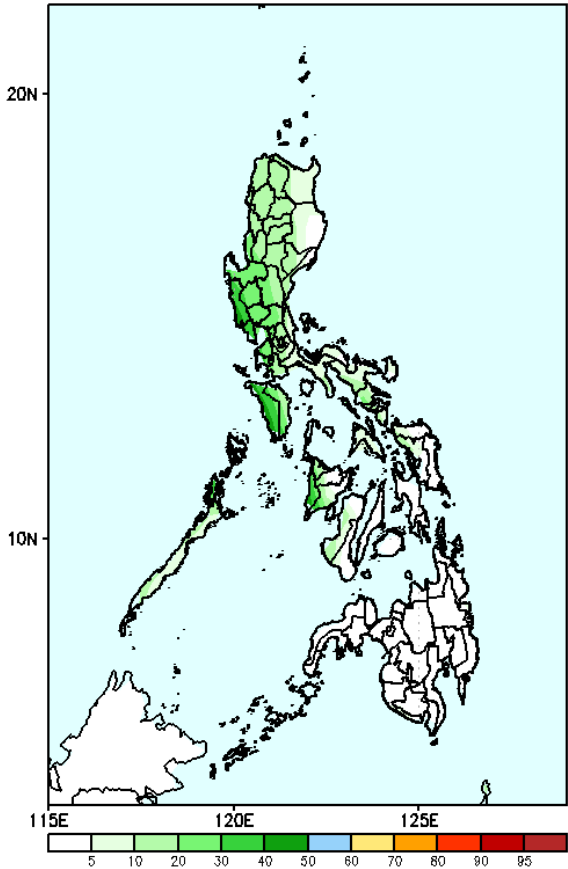
- Very high probability
- High Probability
- Moderate Probability
- Low Probability

GEFS Week-2 Exceedance Prob. > 100mm  
Valid: 20230621 – 20230627



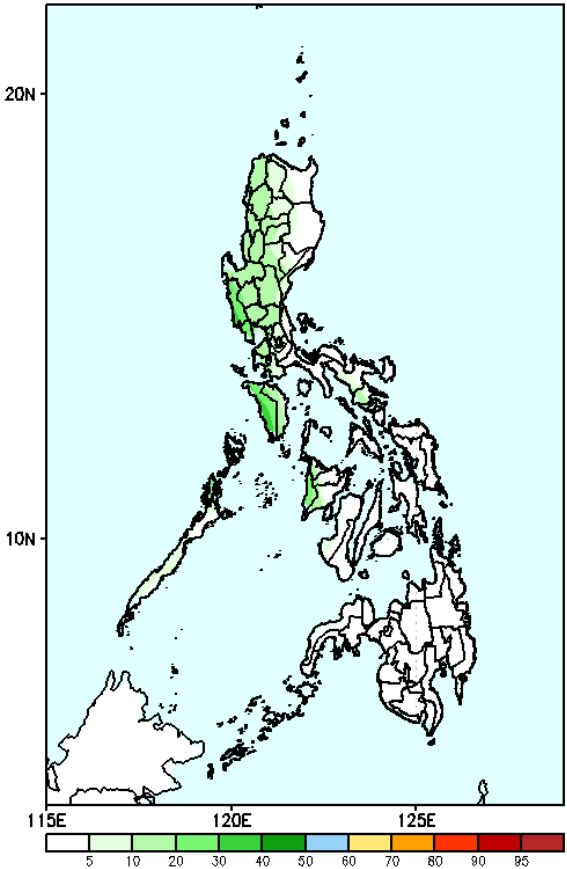
Moderate probability to exceed 100mm of rainfall over Occidental Mindoro and western sections of Central Luzon and CALABARZON while low likelihood over the rest of the country.

GEFS Week-2 Exceedance Prob. > 150mm  
Valid: 20230621 – 20230627



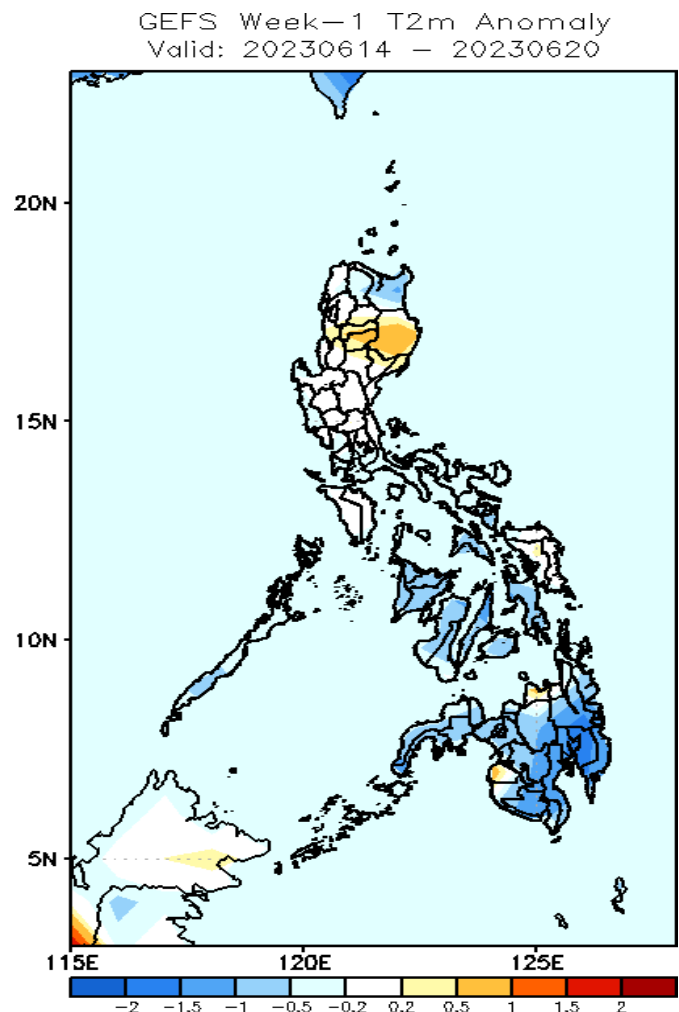
Low probability to exceed 150mm of rainfall over the rest of the country.

GEFS Week-2 Exceedance Prob. > 200mm  
Valid: 20230621 – 20230627



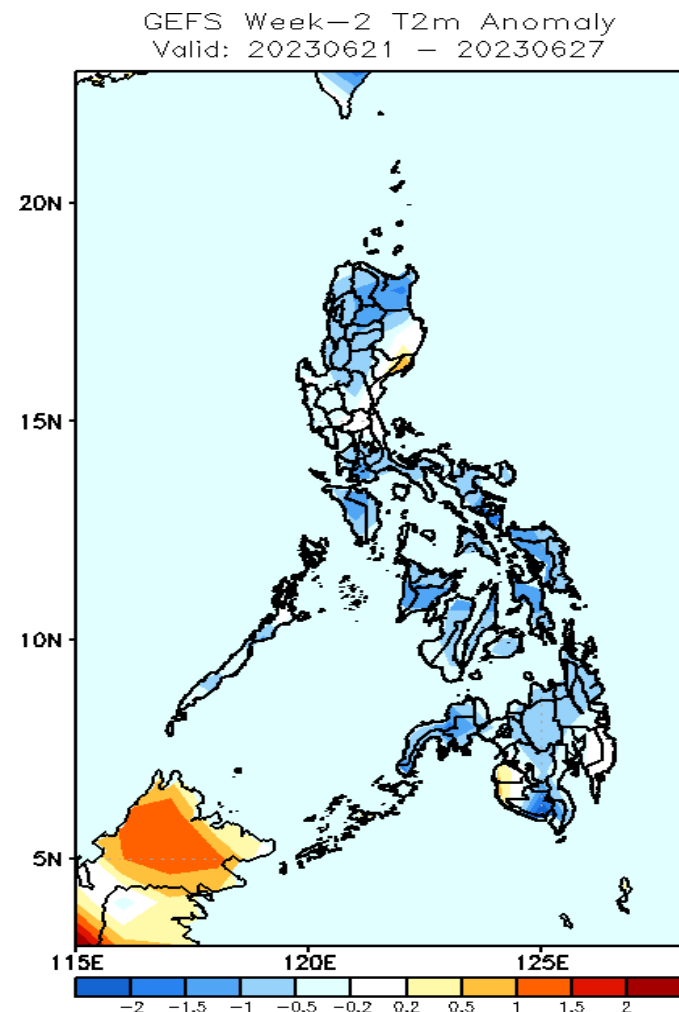
Low probability to exceed 200mm of rainfall over the rest of the country.

# GEFS Week-1 & 2 Forecasts: T2m Anomaly



## 2m Temperature Week 1: June 14 - 20, 2023

Average to slightly warmer than surface air temperature will likely experience in most parts of Luzon, Samar provinces, Misamis Oriental and Maguindanao while slightly cooler to cooler than average temperature in Cagayan and most parts of Visayas and Mindanao.



## 2m Temperature Week 2: June 21-27, 2023

Average to cooler than average surface air temperature will likely experience in most parts of the country.

