



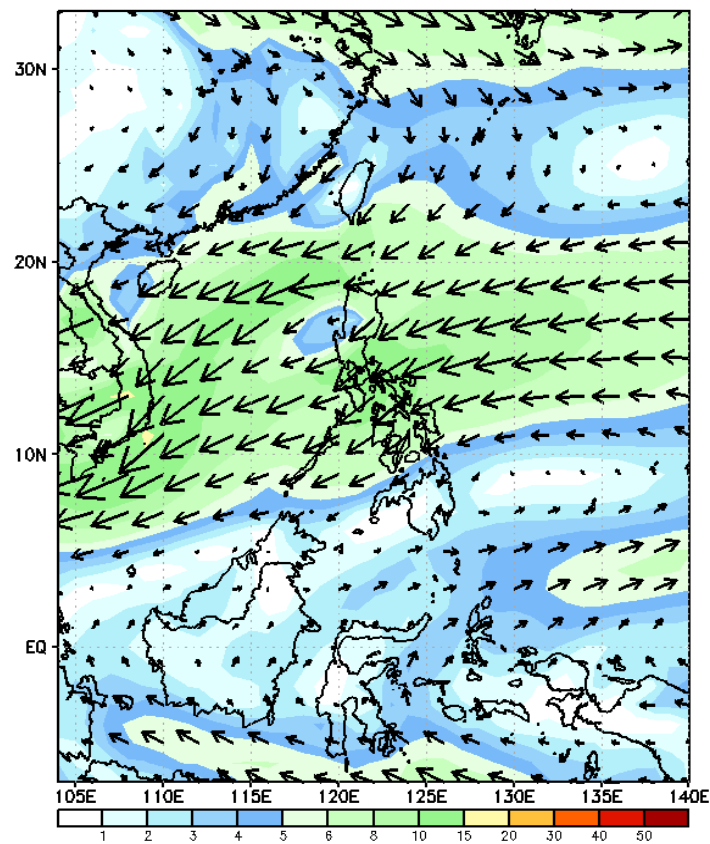
Week 1 & Week 2 Forecast for the Philippines using GEFS Model



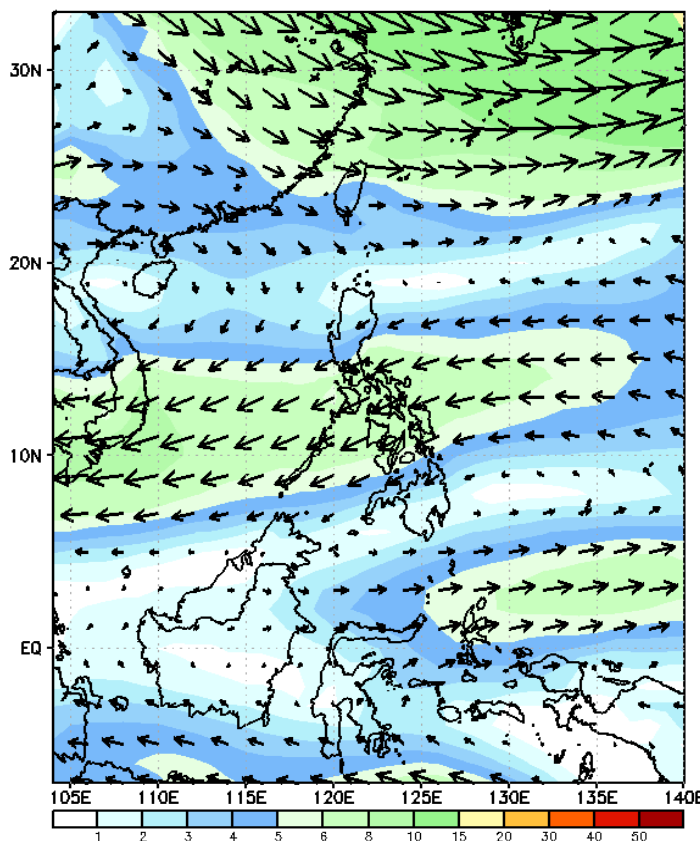
GEFS Week-1 Forecasts: Wind Forecast

Week 1: Nov 15 - 21, 2023

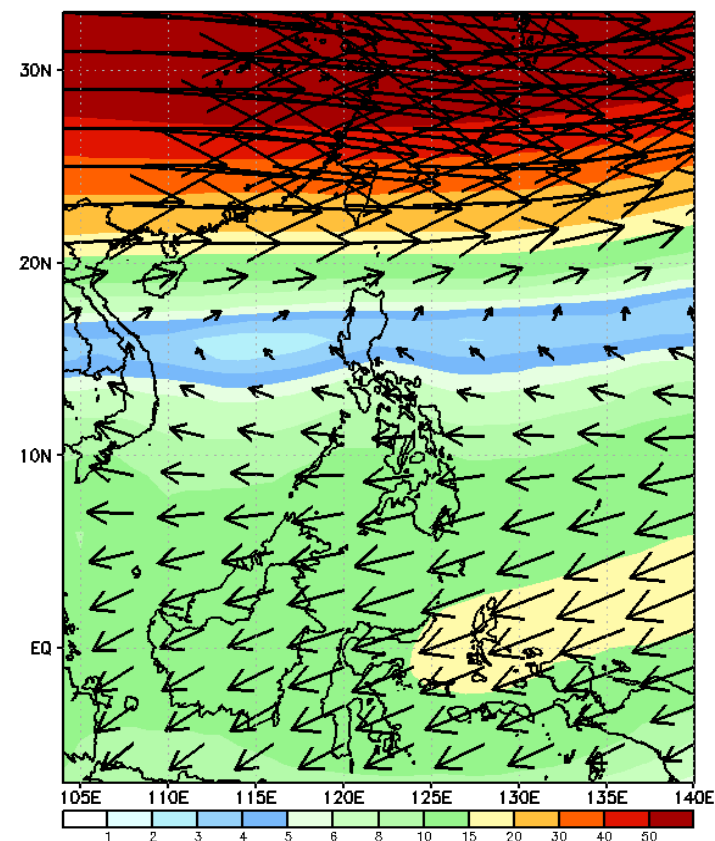
GEFS Week-1 850-hPa Wind Total
Valid: 20231115 - 20231121



GEFS Week-1 700-hPa Wind Total
Valid: 20231115 - 20231121

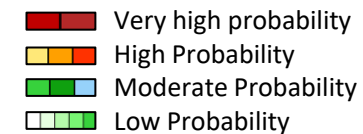


GEFS Week-1 200-hPa Wind Total
Valid: 20231115 - 20231121



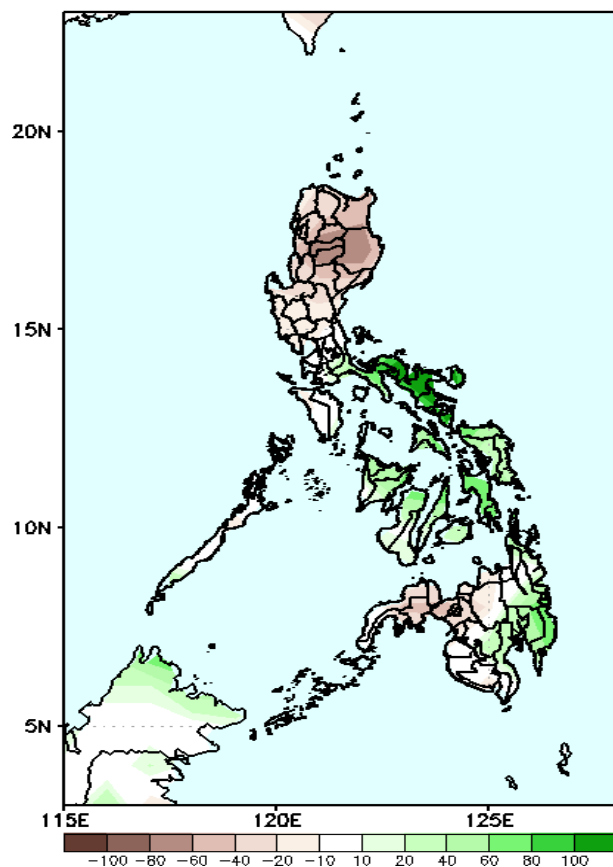
Northeast Monsoon affecting Northern Luzon. Easterlies affecting the rest of the country. Moreover, a two cyclonic circulation was forecasted near northeastern Luzon and Eastern Mindanao.

Precipitation Anomaly and Exceedance Probability > 25/50 mm



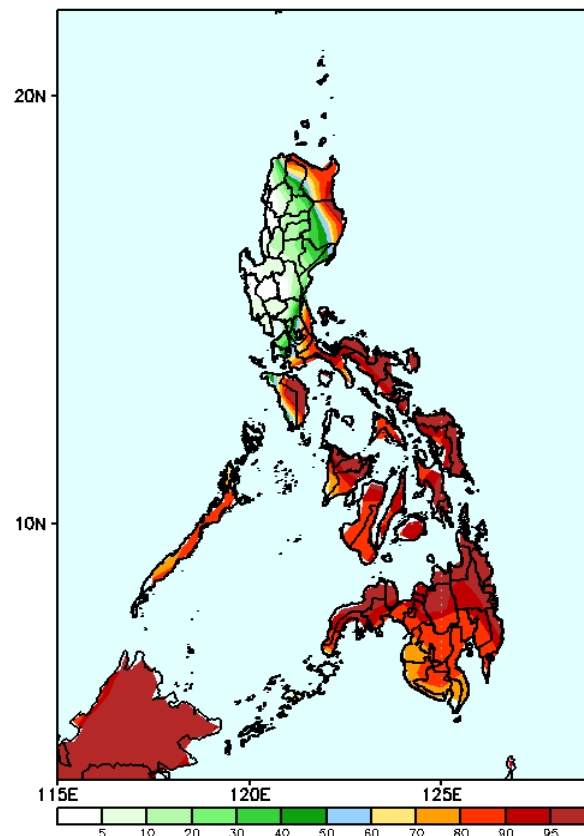
Week 1: Nov 15 - 21, 2023

GEFS Week-1 Precip Anomaly
Valid: 20231115 - 20231121



Rainfall deficit of 40-80mm is expected in most parts of Northern and Central Luzon and Northern and Western Mindanao while 40-100mm increase of rainfall is more likely in most parts of Quezon, Bicol Region, Visayas and Davao region.

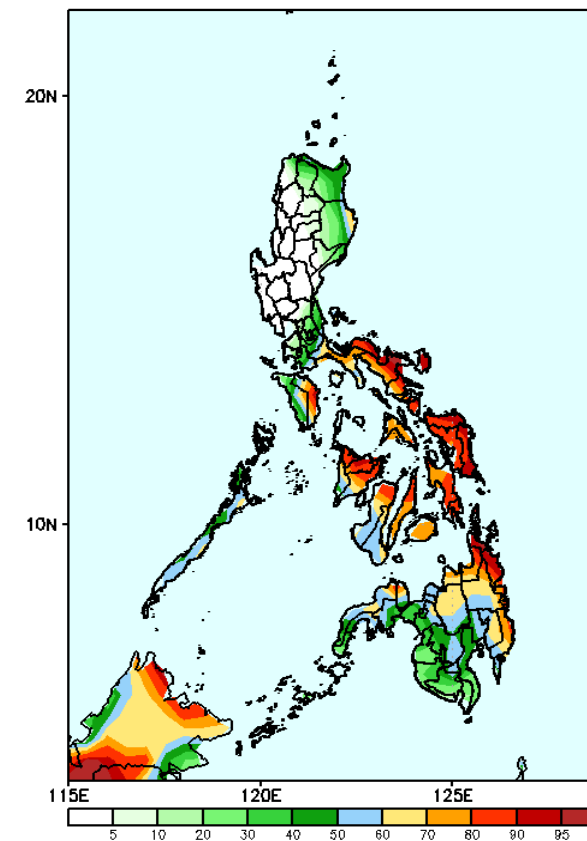
GEFS Week-1 Exceedance Prob. > 25mm
Valid: 20231115 - 20231121



Probability to Exceed 25mm

- High to very high over Quezon, MIMAROPA, Bicol Region, Visayas, and Mindanao;
- Moderate to high over CALABARZON, and portions of Apayao, Cagayan, and Isabela;
- Low to moderate elsewhere.

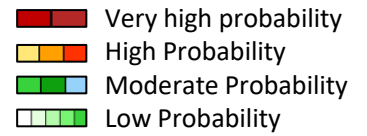
GEFS Week-1 Exceedance Prob. > 50mm
Valid: 20231115 - 20231121



Probability to Exceed 50mm

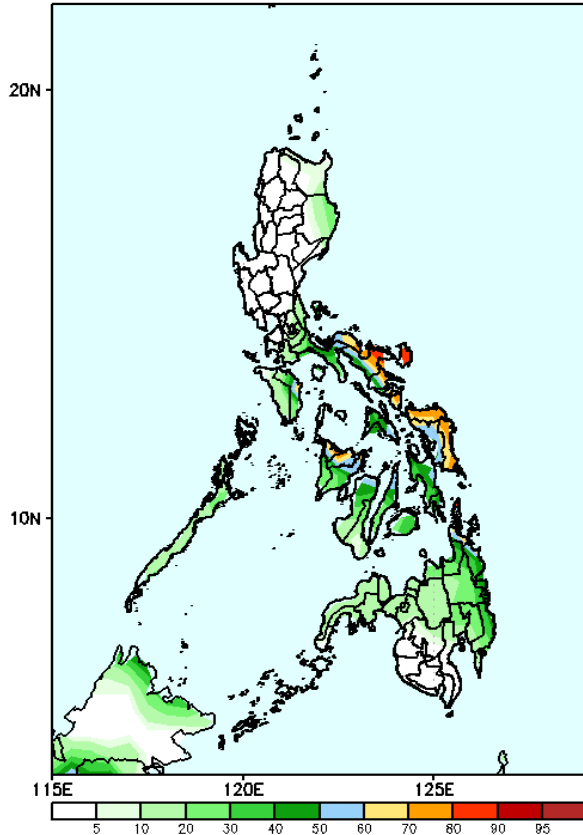
- High to very high over Bicol Region, Eastern Visayas, Capiz, Surigao Provinces, and Dinagat Island;
- Moderate to high over the rest of Visayas, MIMAROPA, Quezon, rest of CARAGA, most of Davao Region, Zamboanga Sibugay, and Northern Mindanao;
- Low to moderate elsewhere.

Exceedance Probability > 100/150/200 mm



Week 1: Nov 15 - 21, 2023

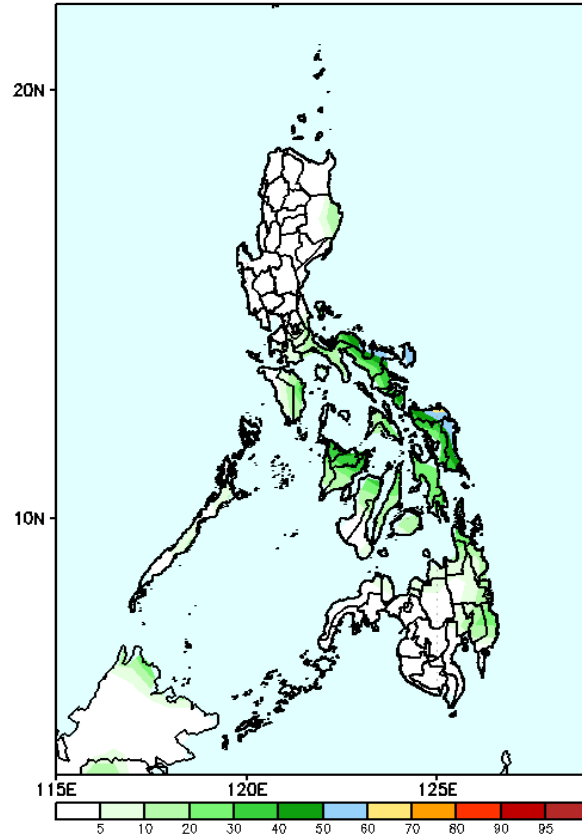
GEFS Week-1 Exceedance Prob. > 100mm
Valid: 20231115 - 20231121



Probability to Exceed 100mm

- Moderate to high over Bicol Region, Oriental Mindoro, Eastern Visayas, and northern portions of Western Visayas and Cebu;
- Low elsewhere.

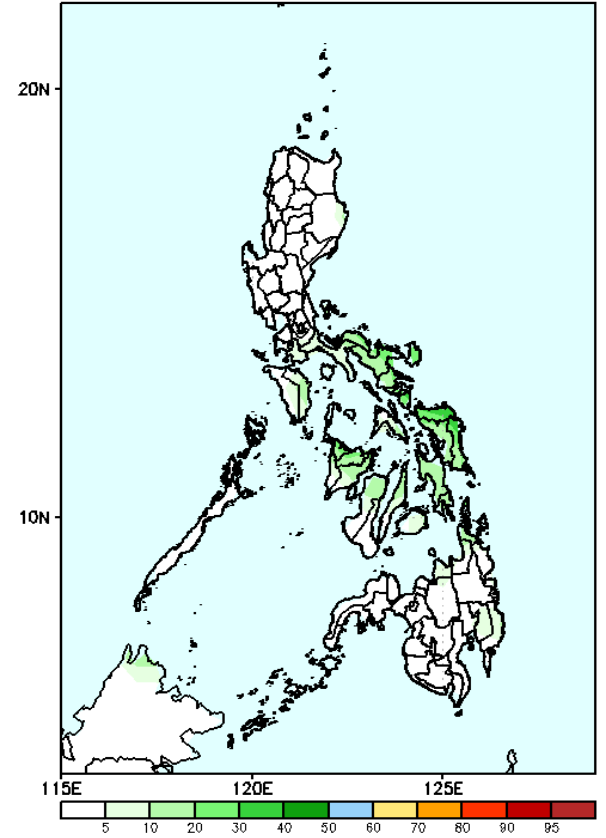
GEFS Week-1 Exceedance Prob. > 150mm
Valid: 20231115 - 20231121



Probability to Exceed 150mm

- Moderate over the eastern portion of Bicol Region, Samar provinces, and Polillo Island;
- Low elsewhere.

GEFS Week-1 Exceedance Prob. > 200mm
Valid: 20231115 - 20231121



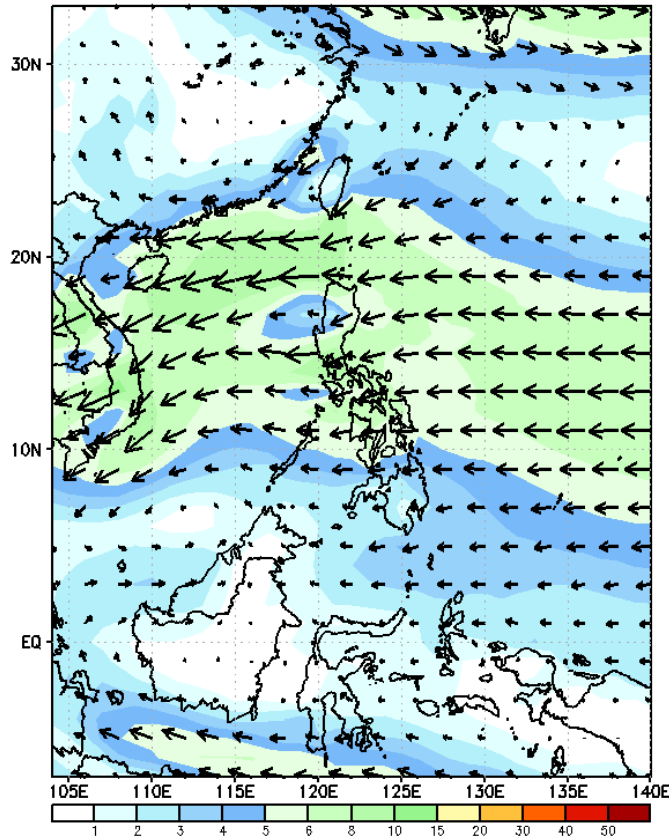
Probability to Exceed 200mm

- Low in most parts of the country.

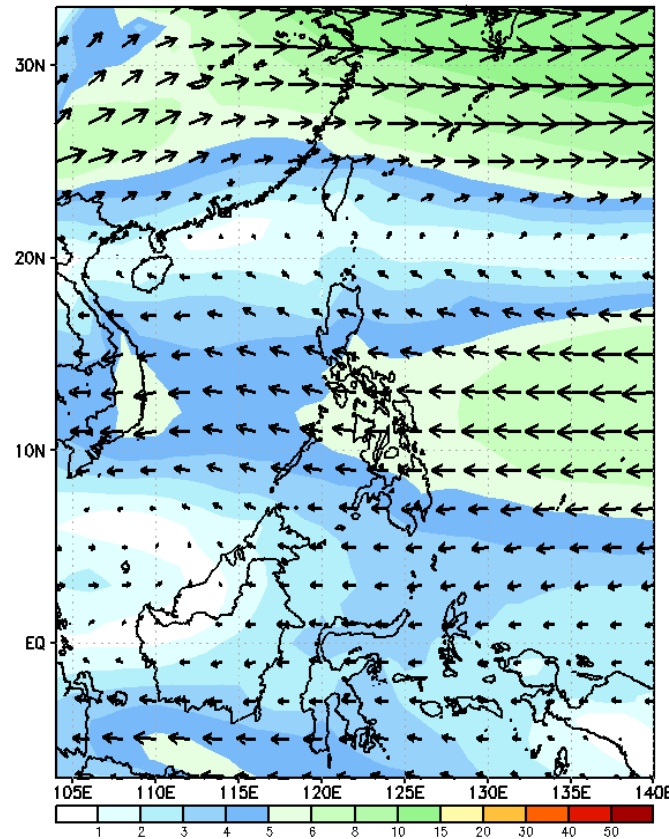
GEFS Week-2 Forecasts: Wind Forecast

Week 2: Nov 22 - 28, 2023

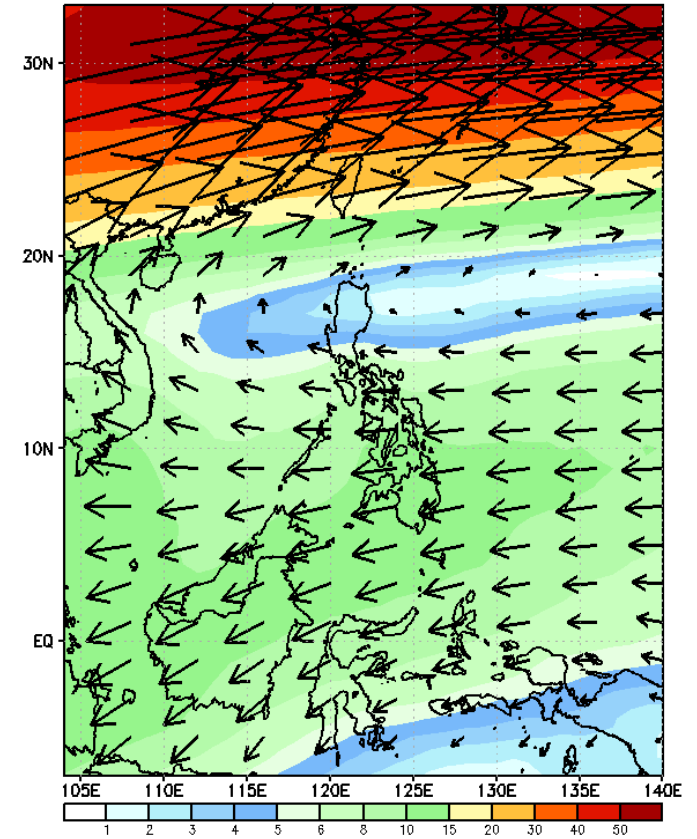
GEFS Week-2 850-hPa Wind Total
Valid: 20231122 - 20231128



GEFS Week-2 700-hPa Wind Total
Valid: 20231122 - 20231128

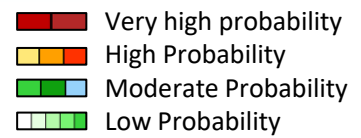


GEFS Week-2 200-hPa Wind Total
Valid: 20231122 - 20231128



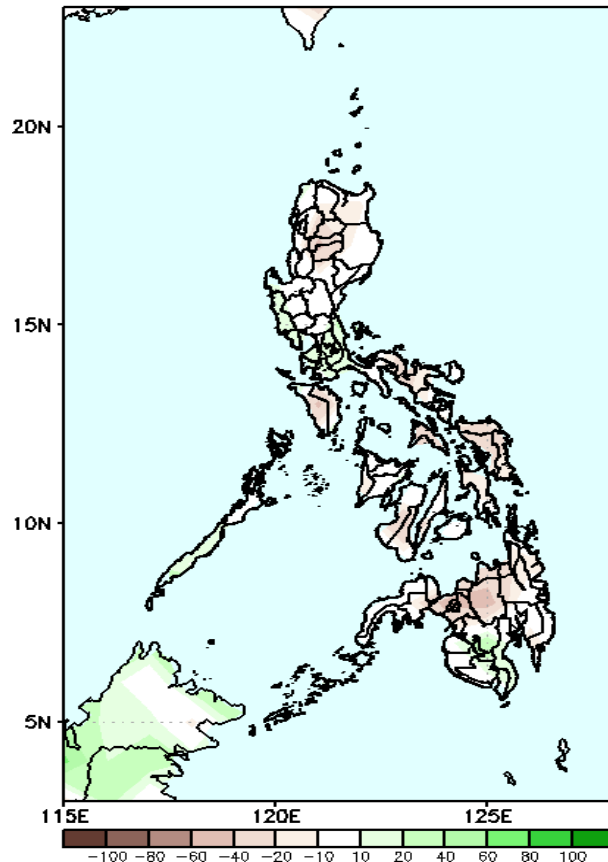
Northeast Monsoon affecting Extreme Northern Luzon. Easterlies affecting the rest of the country.

Precipitation Anomaly and Exceedance Probability > 25/50 mm



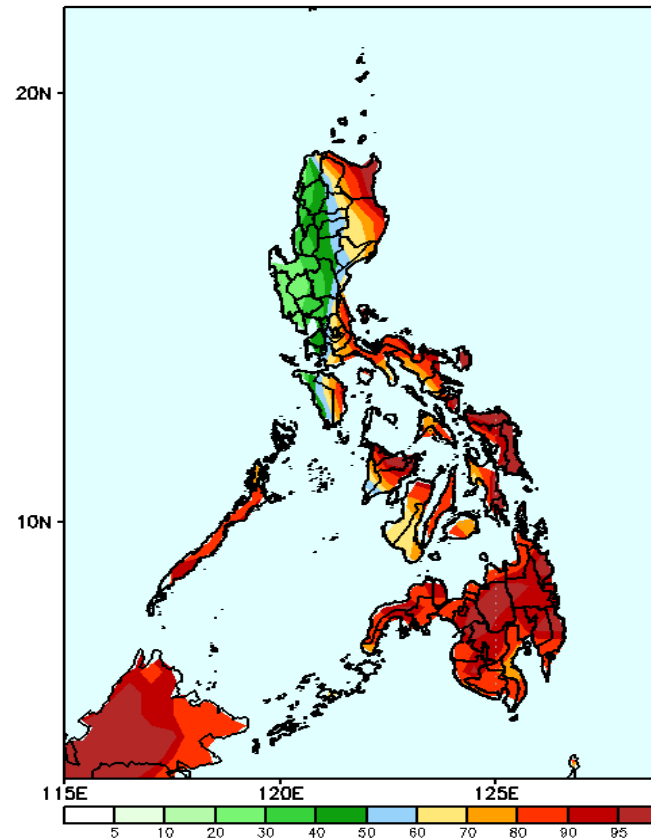
Week 2: Nov 22 - 28, 2023

GEFS Week-2 Precip Anomaly
Valid: 20231122 - 20231128



Rainfall deficit of 10-40mm is expected in most parts of the country except in Zambales, CALABARZON and Southern Mindanao where 20-40mm increase of rainfall is more likely.

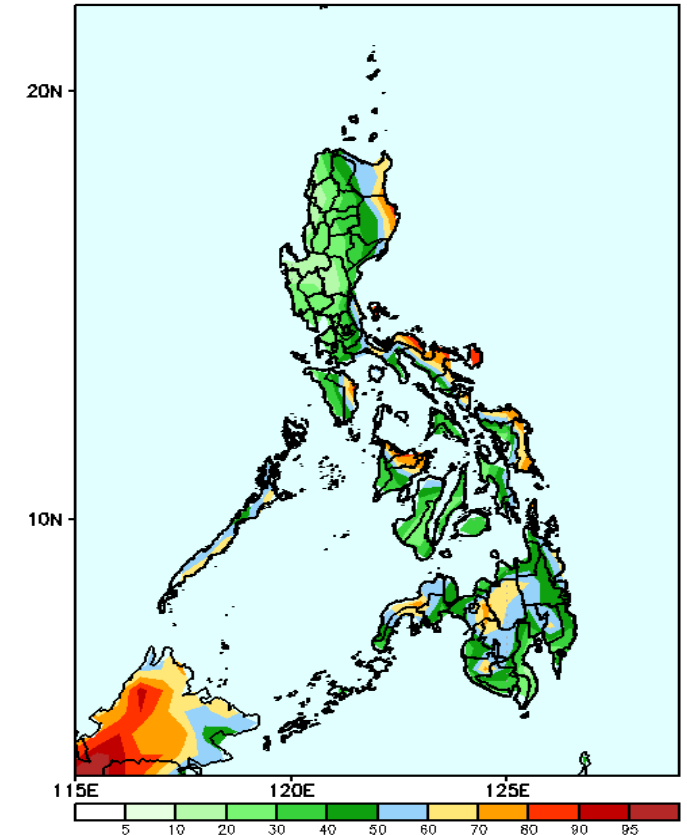
GEFS Week-2 Exceedance Prob. > 25mm
Valid: 20231122 - 20231128



Probability to Exceed 25mm

- High to very high over Cagayan, Isabela, Quezon, Bicol Region, Capiz, Palawan, Eastern Visayas, and Mindanao
- Moderate to high over the rest of the country.

GEFS Week-2 Exceedance Prob. > 50mm
Valid: 20231122 - 20231128



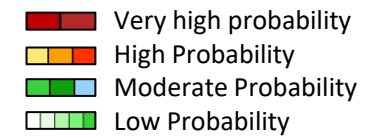
Probability to Exceed 50mm

- Moderate to high in Cagayan, Isabela, Quezon, Bicol Region, Capiz, Oriental Mindoro, Palawan, Eastern Visayas, and Mindanao
- Low to moderate elsewhere.

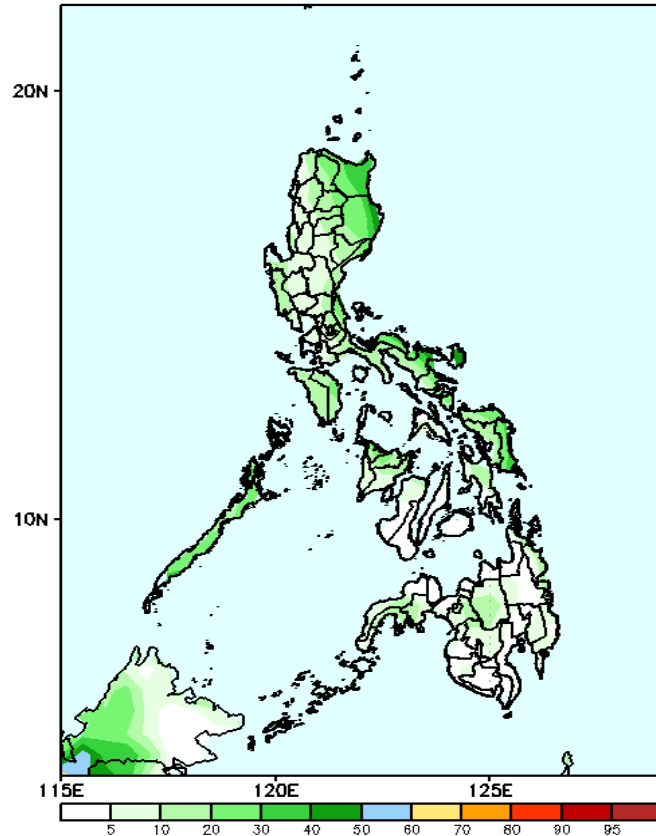


Exceedance Probability > 100/150/200 mm

Week 2: Nov 22 - 28, 2023



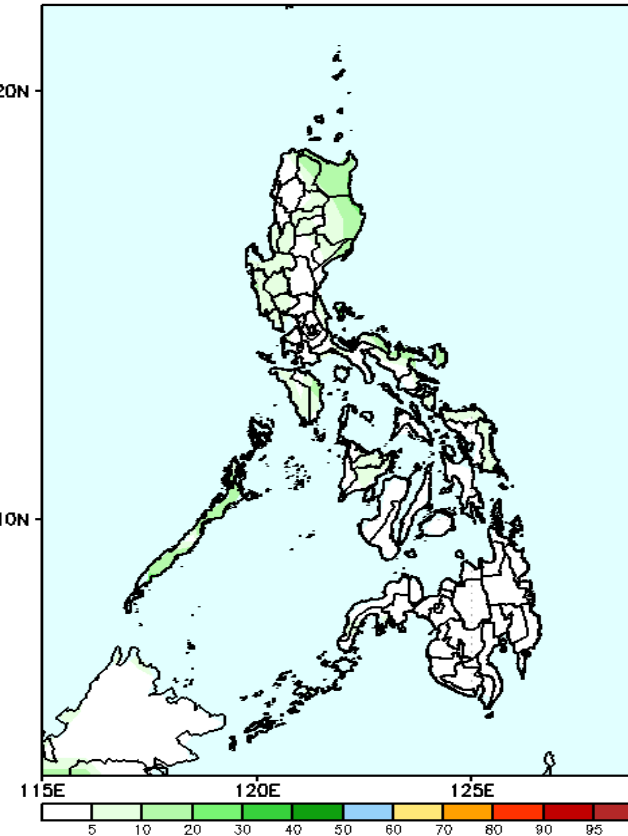
GEFS Week-2 Exceedance Prob. > 100mm
Valid: 20231122 - 20231128



Probability to Exceed 100mm

- Moderate over Catanduanes
- Low over the rest of the country.

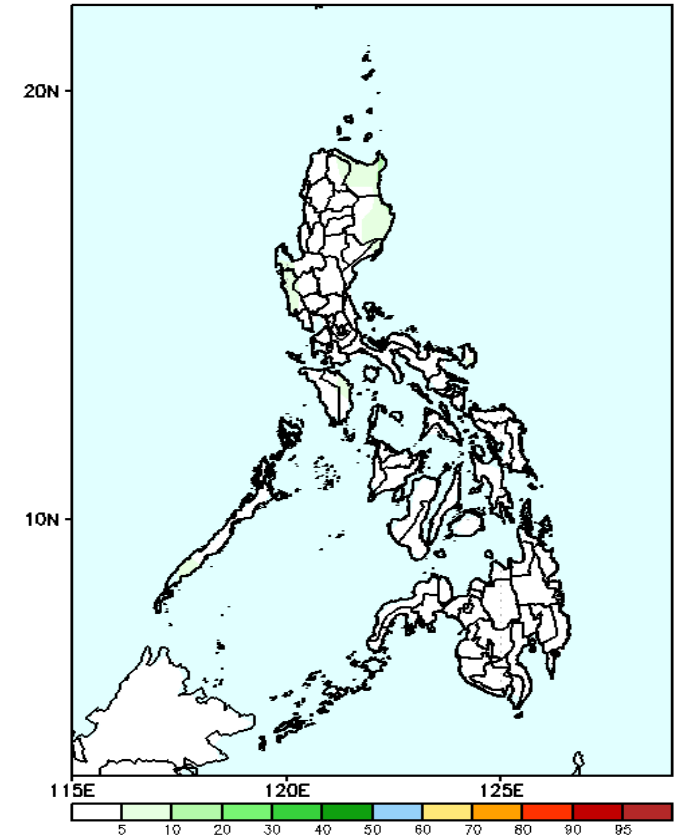
GEFS Week-2 Exceedance Prob. > 150mm
Valid: 20231122 - 20231128



Probability to Exceed 150mm

- Low in most parts of the country.

GEFS Week-2 Exceedance Prob. > 200mm
Valid: 20231122 - 20231128

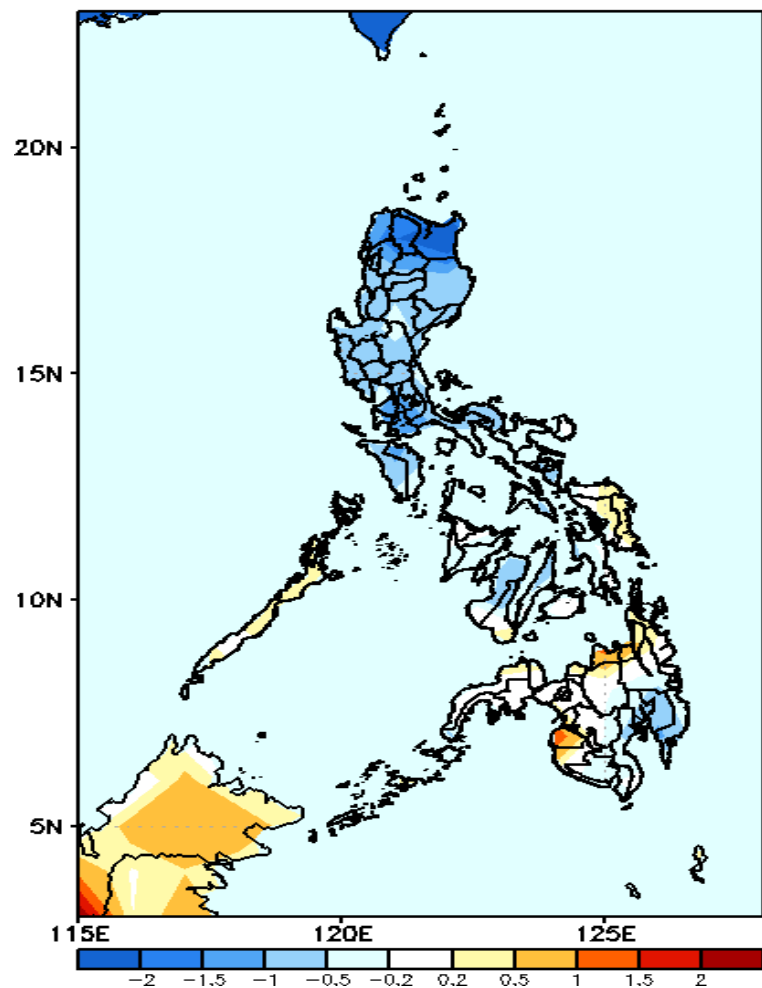


Probability to Exceed 200mm

- Low in most parts of the country.

GEFS Week-1 & 2 Forecasts: T2m Anomaly

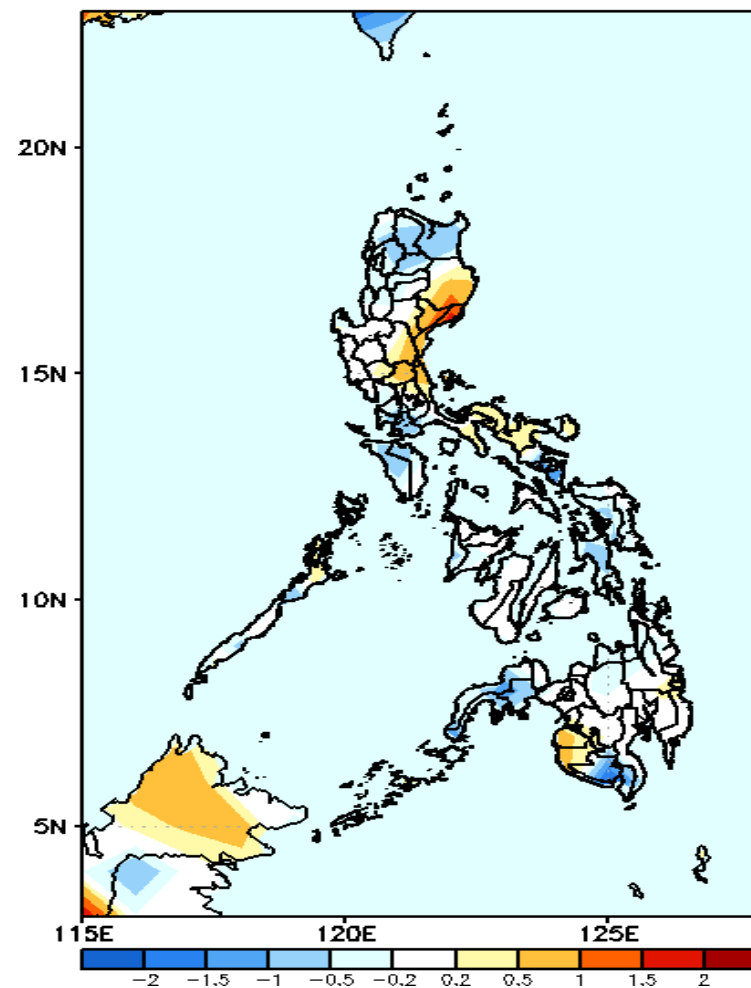
GEFS Week-1 T2m Anomaly
Valid: 20231115 - 20231121



2m Temperature Week 1: Nov 15 - 21, 2023

Average to cooler than average surface air temperature will likely be experienced in most parts of the country except in Palawan, Samar provinces, Misamis Oriental, Maguindanao and Sultan Kudarat where average to warmer than average temperature is

GEFS Week-2 T2m Anomaly
Valid: 20231122 - 20231128



2m Temperature Week 2: Nov 22 - 28, 2023

Average to cooler than average surface air temperature will likely be experienced in most parts of the country except in most parts of Eastern Luzon, Camarines provinces, Maguindanao and Sultan Kudarat where slightly warmer than average temperature is