



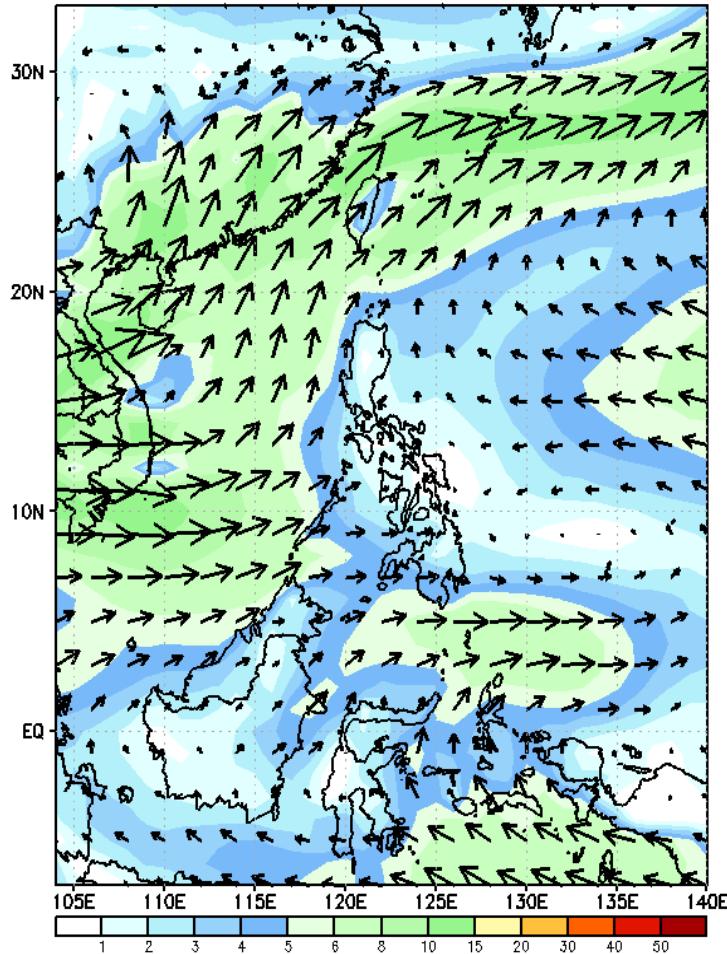
Week 1 & Week 2 Forecast for the Philippines using GEFS Model



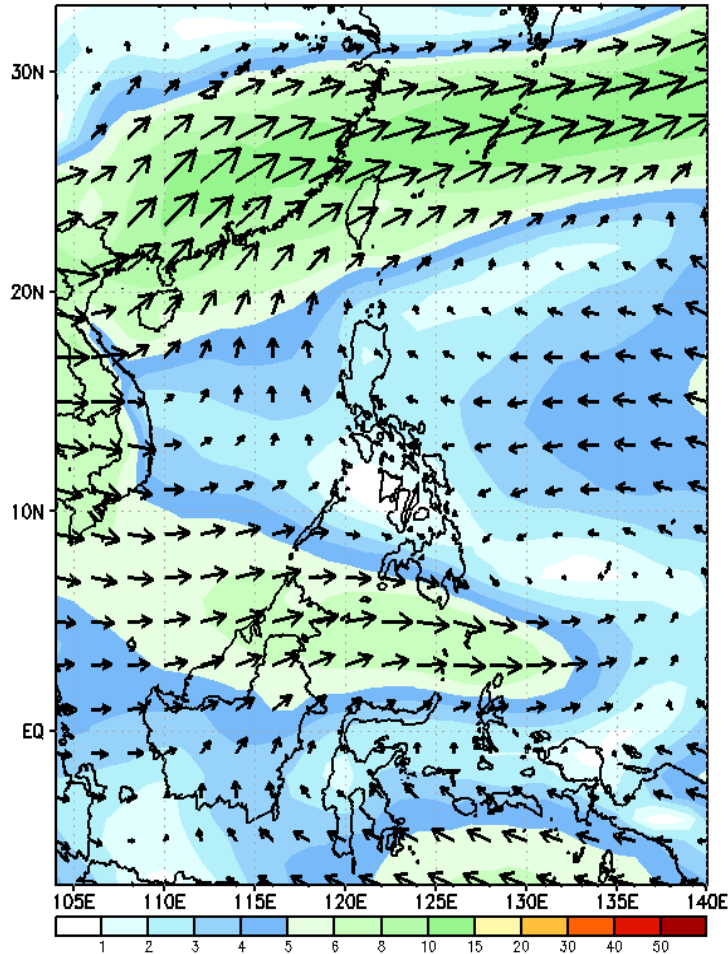
GEFS Week-1 Forecasts: Wind Forecast

Week 1: June 16-22, 2023

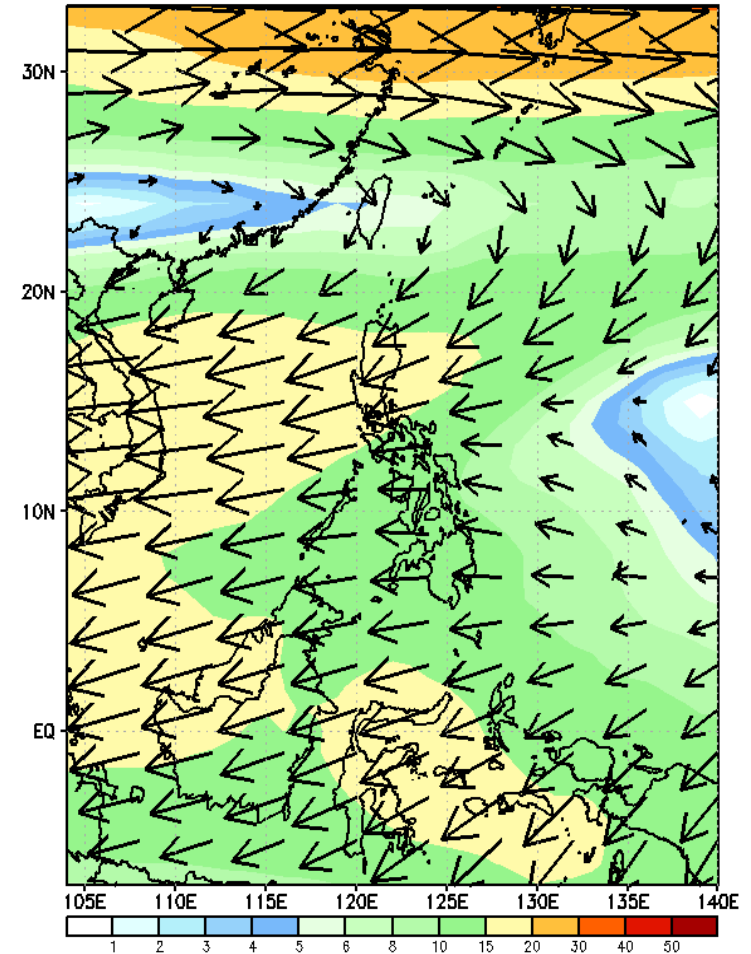
GEFS Week-1 850-hPa Wind Total
Valid: 20230616 - 20230622



GEFS Week-1 700-hPa Wind Total
Valid: 20230616 - 20230622



GEFS Week-1 200-hPa Wind Total
Valid: 20230616 - 20230622



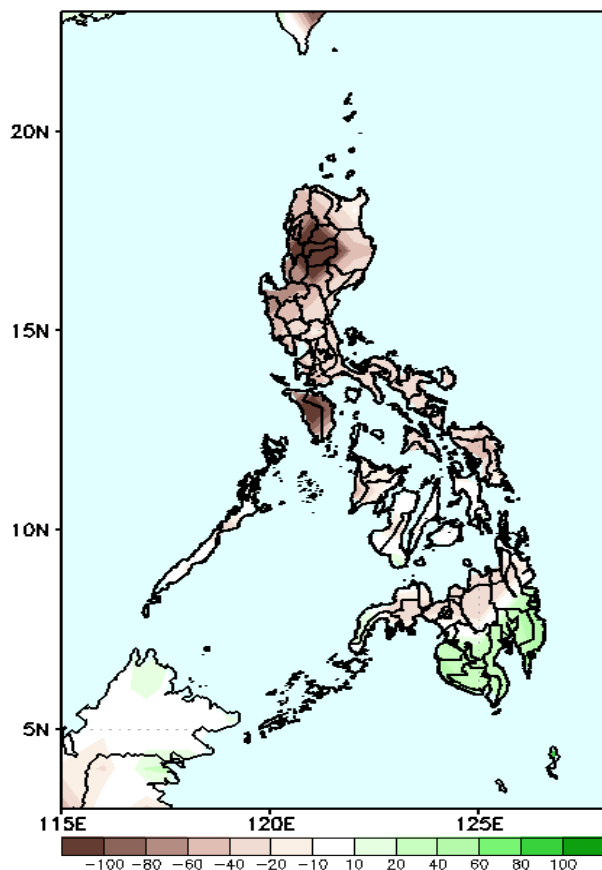
Southwest Monsoon is forecasted to affect the western sections of the country while Easterlies will likely affect the eastern section of Luzon and Visayas.

Precipitation Anomaly and Exceedance Probability > 25/50 mm



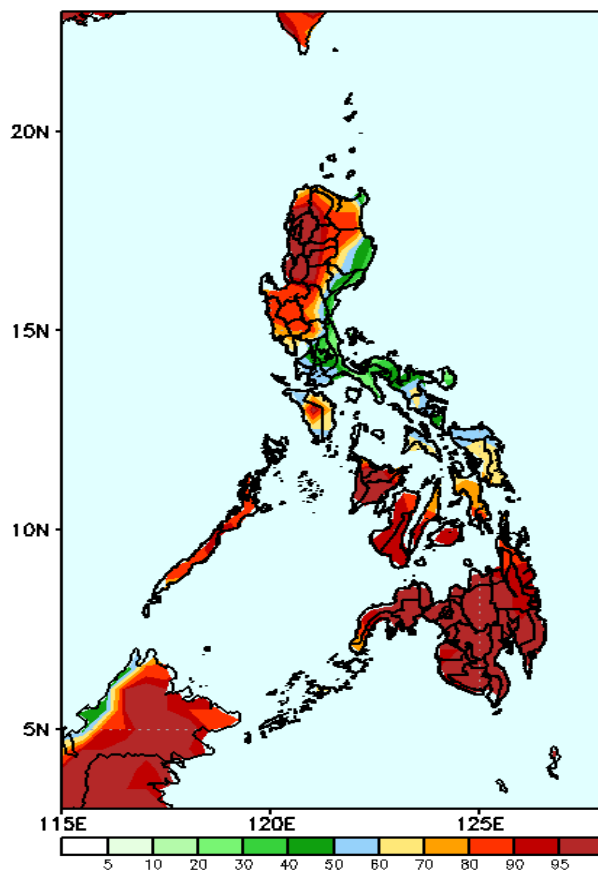
Week 1: June 16-22, 2023

GEFS Week-1 Precip Anomaly
Valid: 20230616 - 20230622



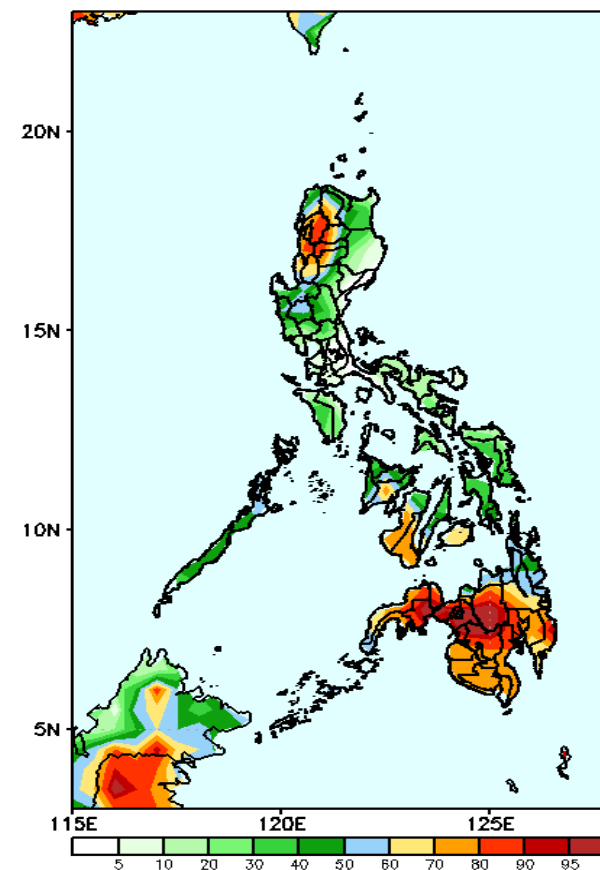
Rainfall deficit of more than 100mm is expected in most parts of CAR and Mindoro; 20-60mm in most parts of the country except in southern Mindanao where there is 20-60mm increase of rainfall.

GEFS Week-1 Exceedance Prob. > 25mm
Valid: 20230616 - 20230622



High to a very high probability to exceed 25mm of rainfall in most parts of the country except for a moderate to high likelihood over NCR, Aurora, CALABARZON, and Bicol region.

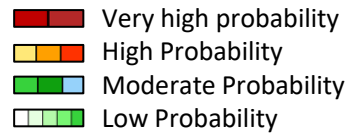
GEFS Week-1 Exceedance Prob. > 50mm
Valid: 20230616 - 20230622



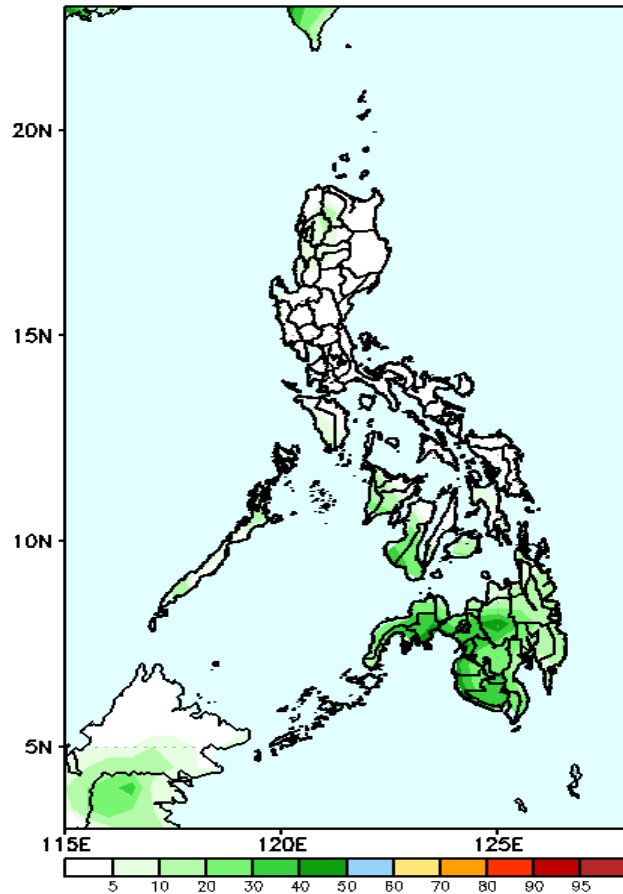
High to a very high probability to exceed 50mm of rainfall in most parts of CAR, Ilocos Sur, La Union, and Mindanao; moderate to high likelihood in Palawan, and Western and Central Visayas while low to moderate chance over the rest of the country.

Exceedance Probability > 100/150/200 mm

Week 1: June 16-22, 2023

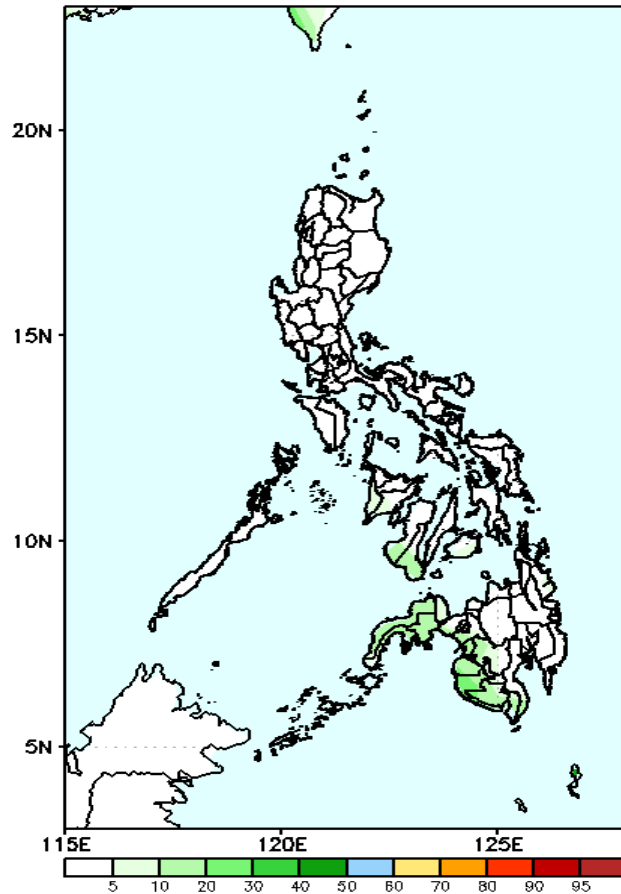


GEFS Week-1 Exceedance Prob. > 100mm
Valid: 20230616 - 20230622



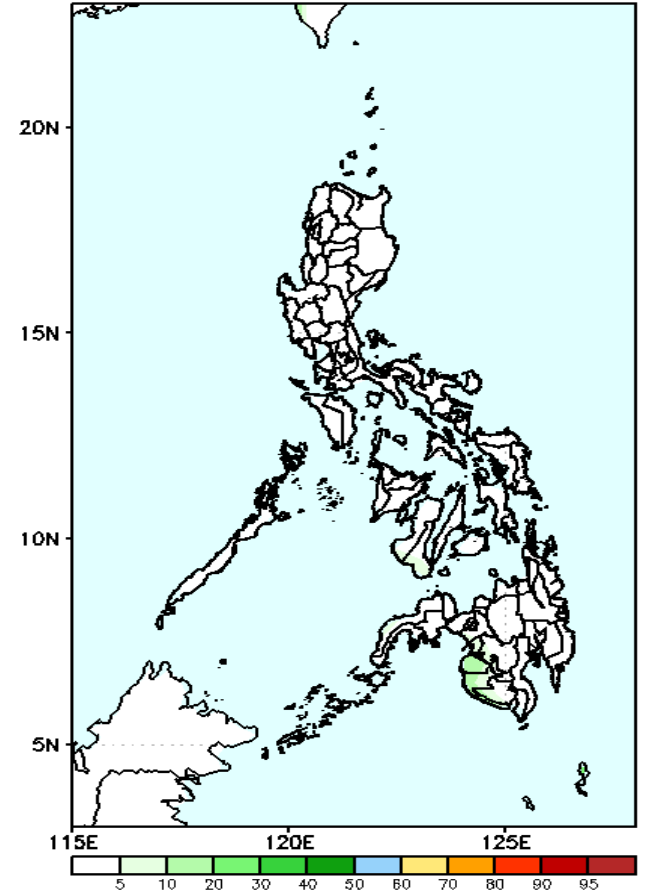
Low to moderate probability to exceed 100mm of rainfall in most parts of the country.

GEFS Week-1 Exceedance Prob. > 150mm
Valid: 20230616 - 20230622



Low probability to exceed 150mm of rainfall over the rest of the country.

GEFS Week-1 Exceedance Prob. > 200mm
Valid: 20230616 - 20230622

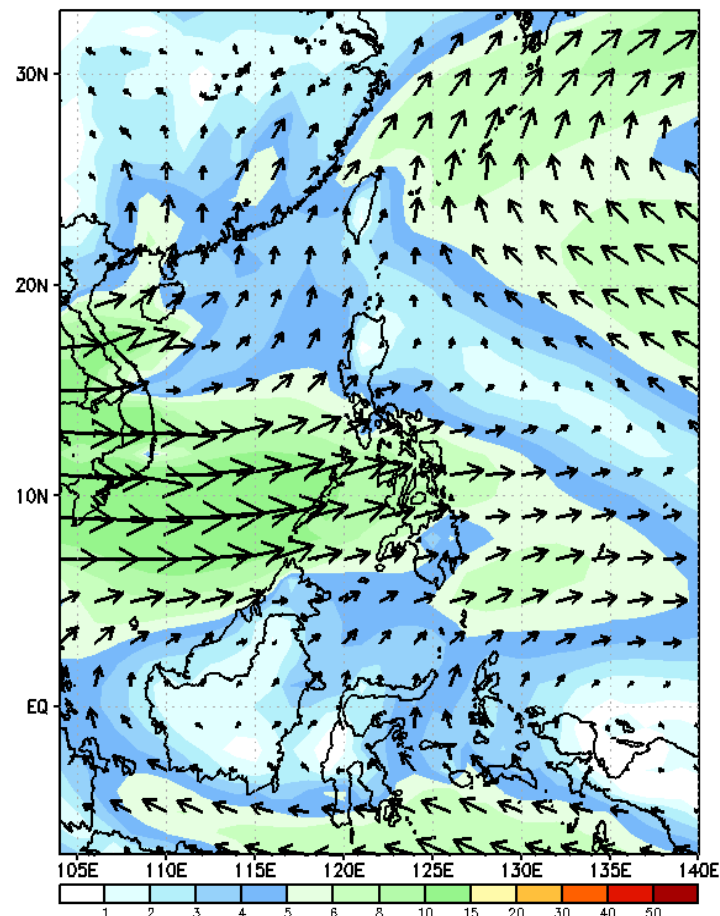


Low probability to exceed 200mm of rainfall over the rest of the country.

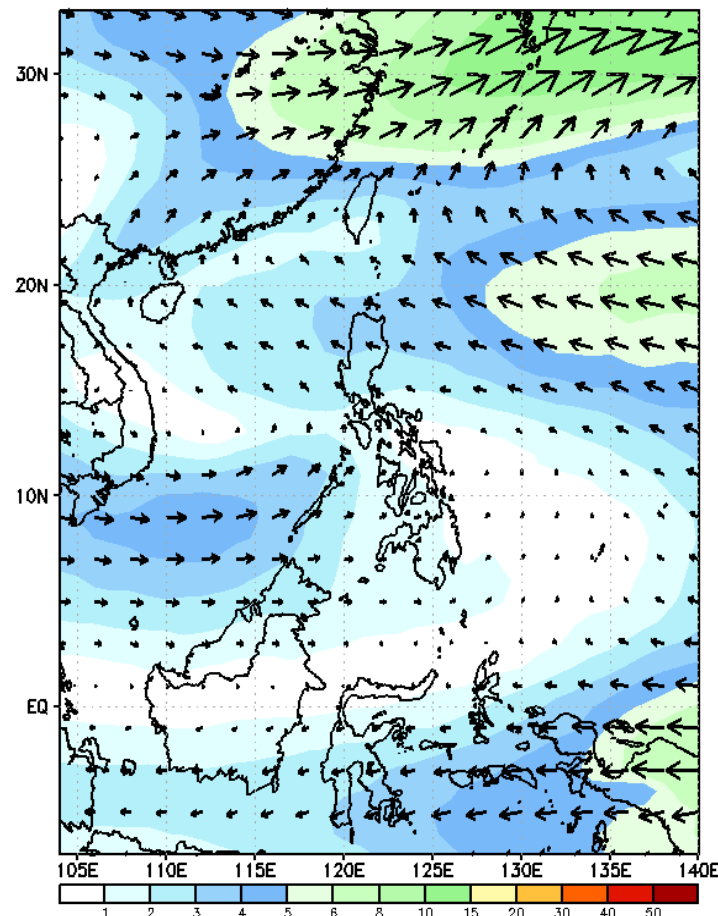
GEFS Week-2 Forecasts: Wind Forecast

Week 2: June 23-29, 2023

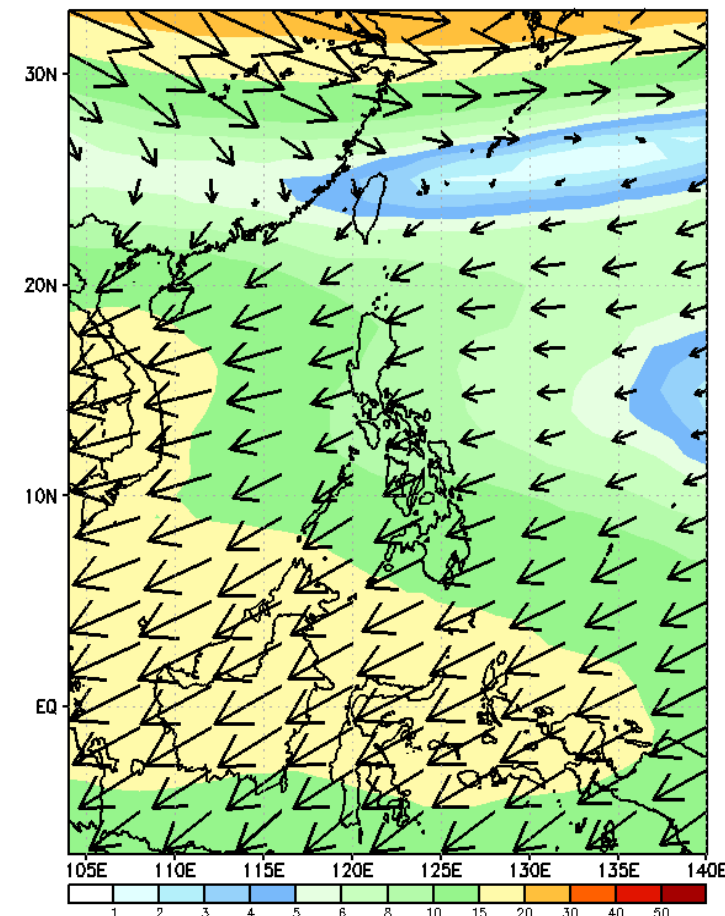
GEFS Week-2 850-hPa Wind Total
Valid: 20230623 - 20230629



GEFS Week-2 500-hPa Wind Total
Valid: 20230623 - 20230629



GEFS Week-2 200-hPa Wind Total
Valid: 20230623 - 20230629



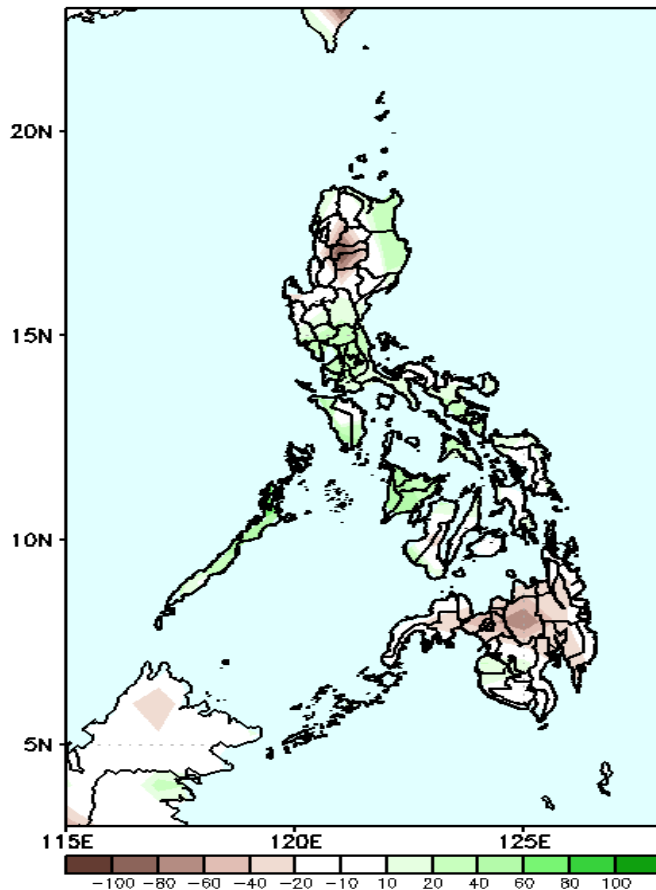
Weak Southwest Monsoon is forecasted to affect most parts of the country

Precipitation Anomaly and Exceedance Probability > 25/50 mm

- Very high probability
- High Probability
- Moderate Probability
- Low Probability

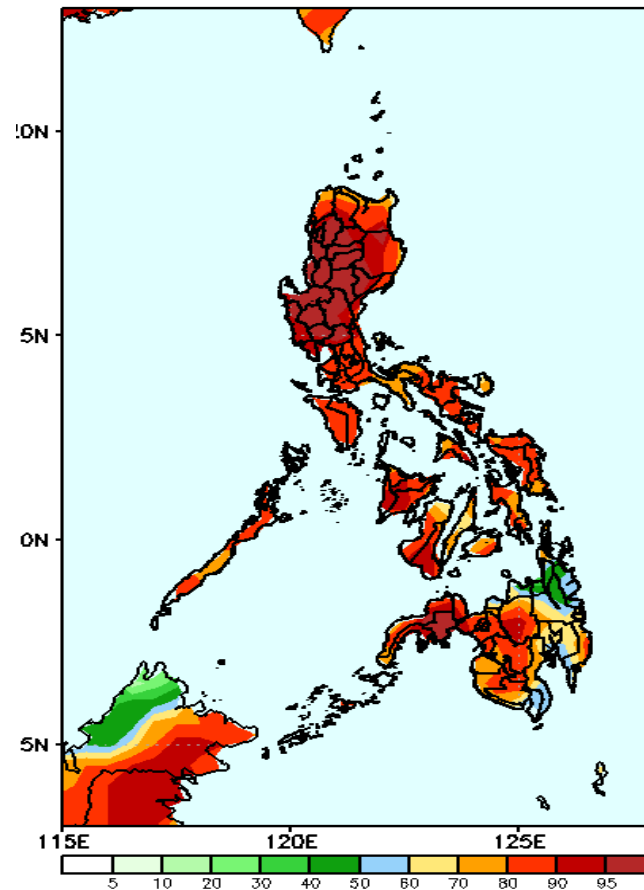
Week 2: June 23-29, 2023

GEFS Week-2 Precip Anomaly
Valid: 20230623 - 20230629



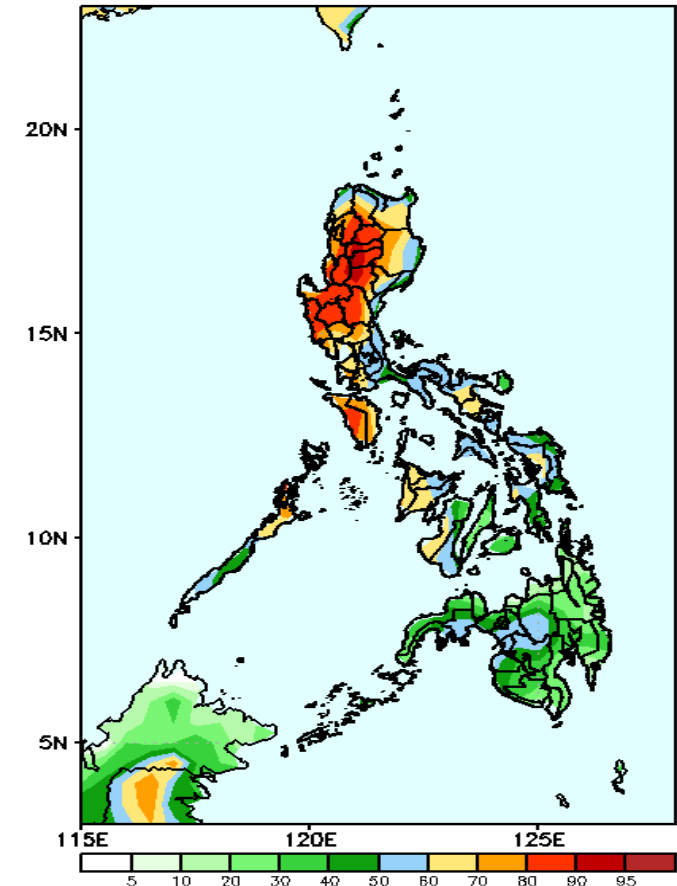
Rainfall deficit of 20-70mm is expected in Kalinga, Mt. Province, Ifugao and most parts of Mindanao while the rest of Luzon and Panay Island will likely have 20-60mm increase of rainfall.

GEFS Week-2 Exceedance Prob. > 25mm
Valid: 20230623 - 20230629



High to a very high probability to exceed 25mm in most parts of the country.

GEFS Week-2 Exceedance Prob. > 50mm
Valid: 20230623 - 20230629



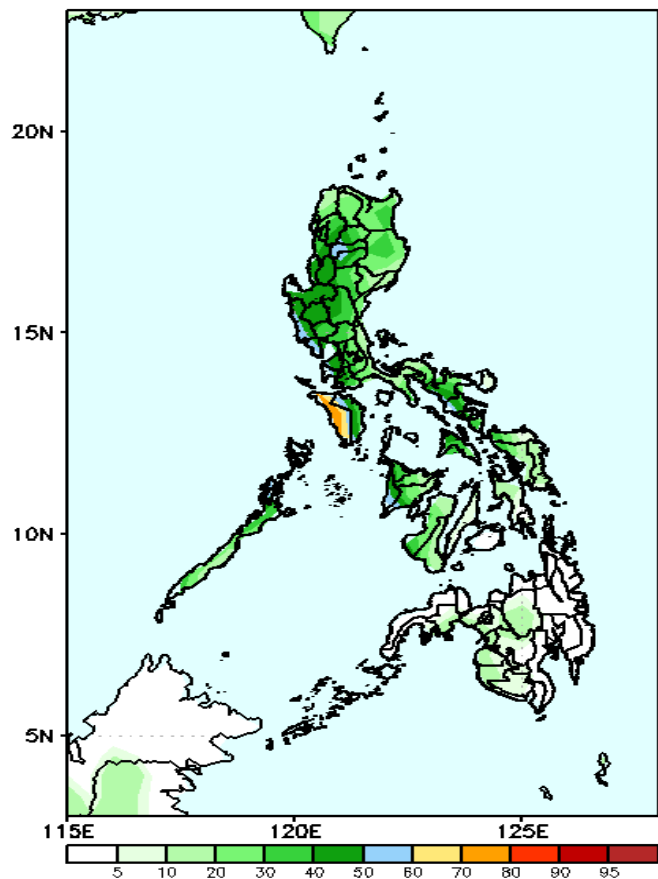
High to a very high probability to exceed 50mm of rainfall in most parts of Northern and Central Luzon and Occidental Mindoro; Moderate to high chance over the Visayas, western parts of Mindanao, and the rest of Luzon while low to moderate likelihood in the eastern portions of Mindanao.

Exceedance Probability > 100/150/200 mm

Week 2: June 23-29, 2023

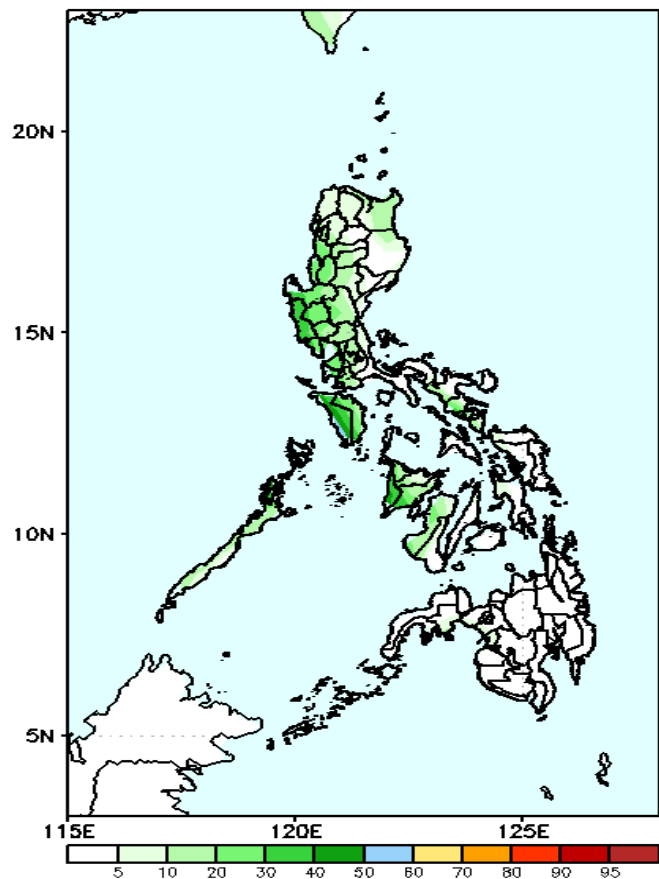
- Very high probability
- High Probability
- Moderate Probability
- Low Probability

GEFS Week-2 Exceedance Prob. > 100mm
Valid: 20230623 - 20230629



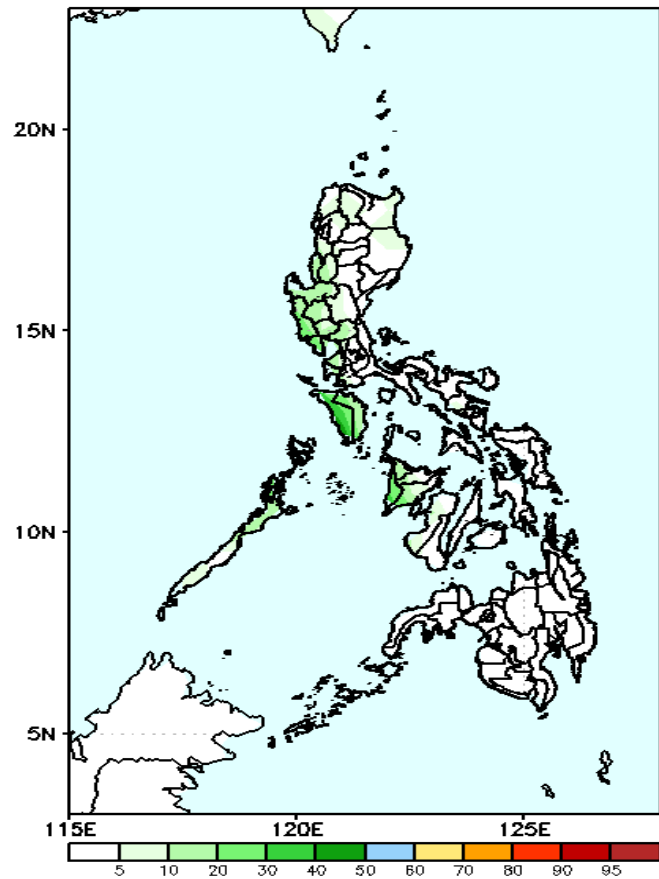
Moderate to high probability to exceed 100mm of rainfall over Occidental Mindoro while low to moderate likelihood over the rest of the country.

GEFS Week-2 Exceedance Prob. > 150mm
Valid: 20230623 - 20230629



Low probability to exceed 150mm of rainfall over the rest of the country.

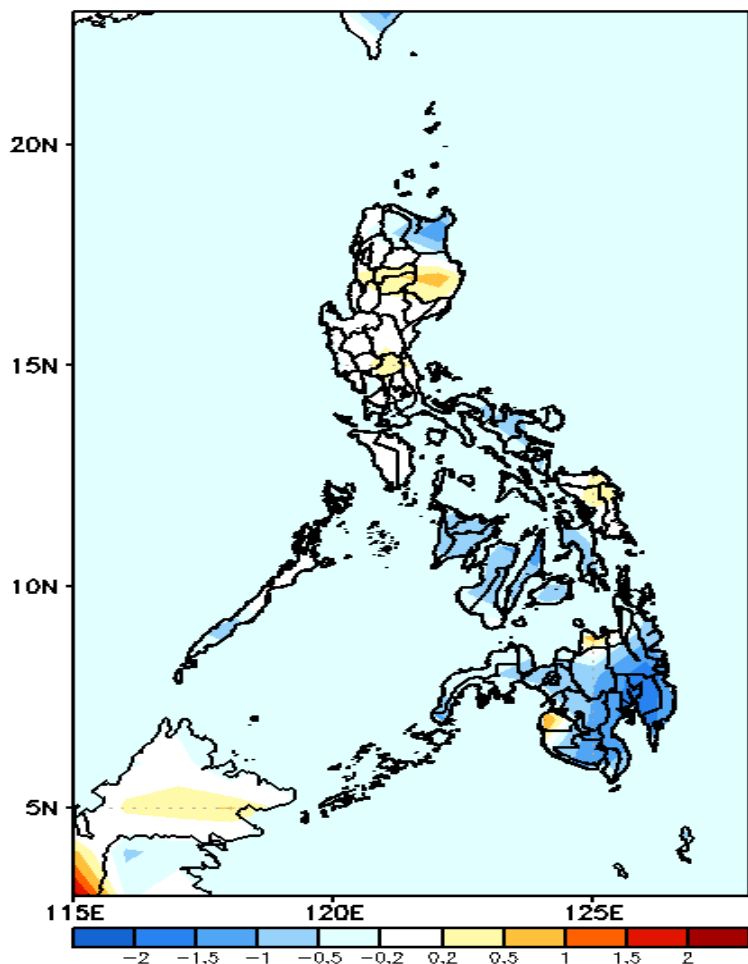
GEFS Week-2 Exceedance Prob. > 200mm
Valid: 20230623 - 20230629



Low probability to exceed 200mm of rainfall over the rest of the country.

GEFS Week-1 & 2 Forecasts: T2m Anomaly

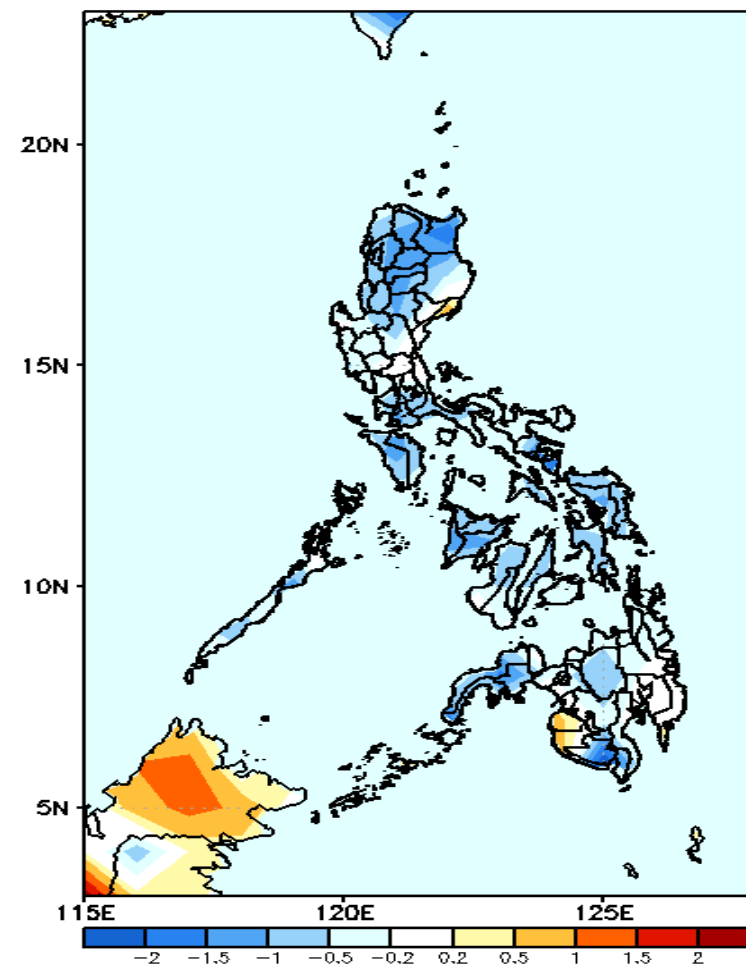
GEFS Week-1 T2m Anomaly
Valid: 20230616 — 20230622



2m Temperature Week 1: June 16-22, 2023

Average to slightly warmer than surface air temperature will likely experience in most parts of Luzon, Samar provinces, Misamis Oriental and Maguindanao while slightly cooler to cooler than average temperature in Cagayan and most parts of Visayas and Mindanao.

GEFS Week-2 T2m Anomaly
Valid: 20230623 — 20230629



2m Temperature Week 2: June 23-29, 2023

Average to cooler than average surface air temperature will likely experience in most parts of the country except in Maguindanao and Sultan Kudarat.