



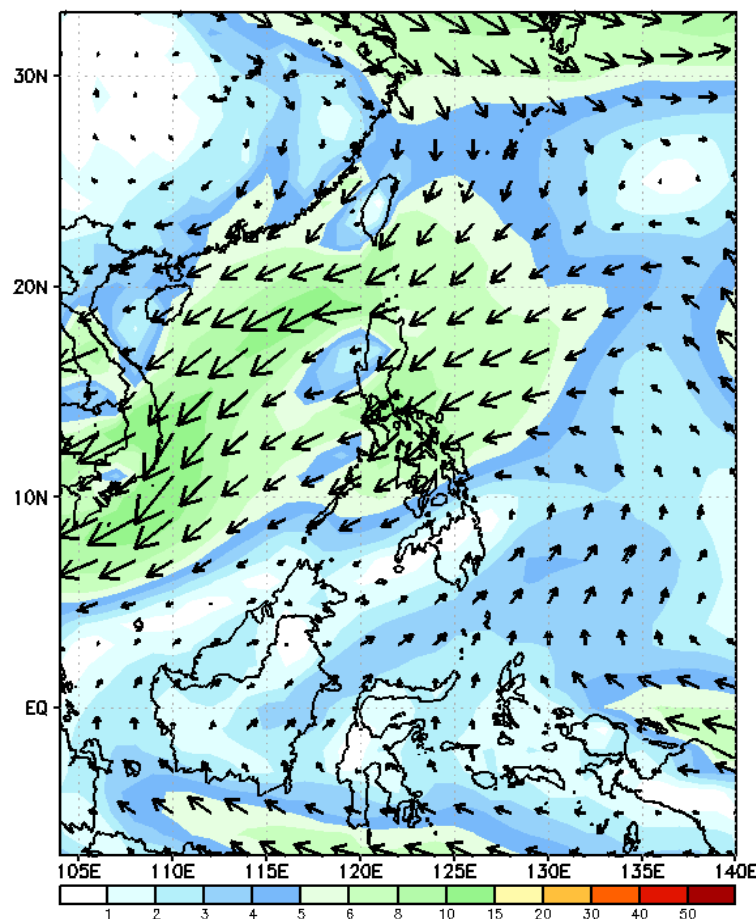
# Week 1 & Week 2 Forecast for the Philippines using GEFS Model



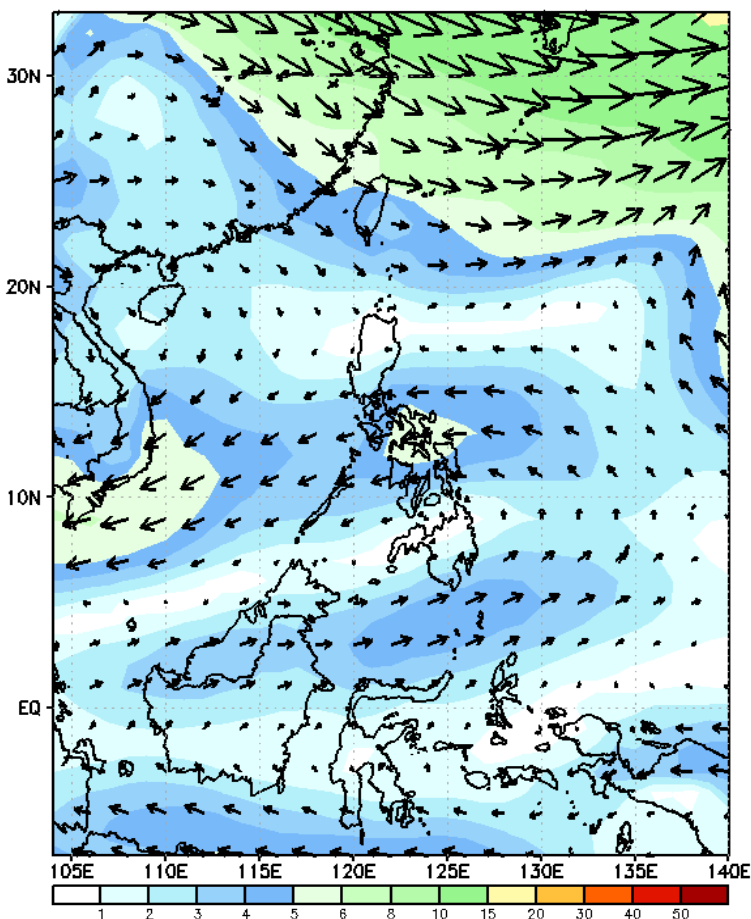
# GEFS Week-1 Forecasts: Wind Forecast

Week 1: Nov 17-23, 2023

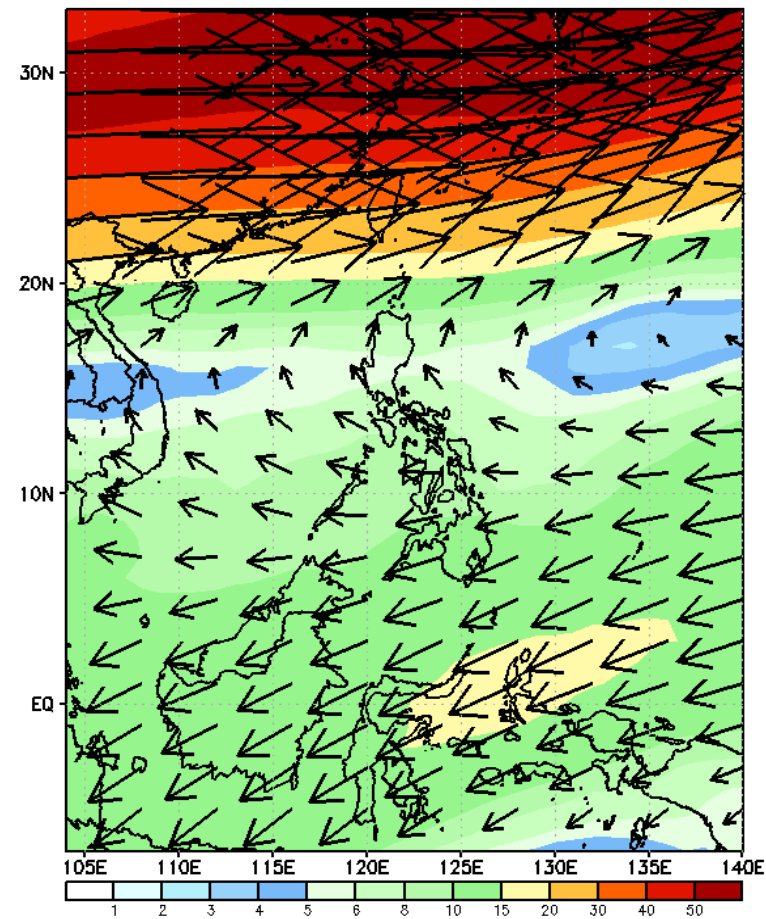
GEFS Week-1 850-hPa Wind Total  
Valid: 20231117 - 20231123



GEFS Week-1 700-hPa Wind Total  
Valid: 20231117 - 20231123

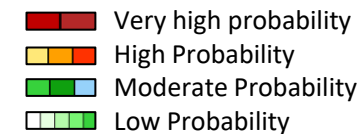


GEFS Week-1 200-hPa Wind Total  
Valid: 20231117 - 20231123



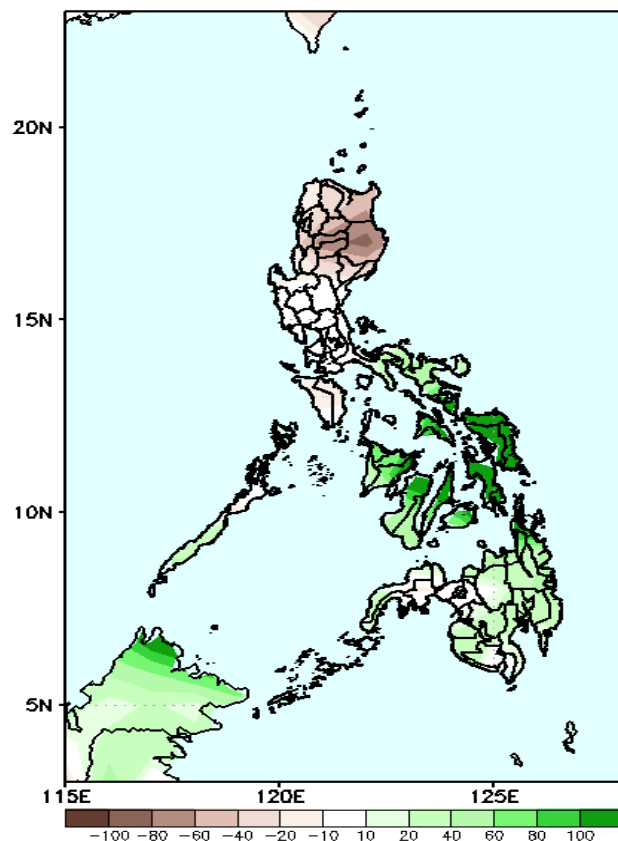
Northeast Monsoon affecting Luzon. Easterlies affecting the rest of the country.

# Precipitation Anomaly and Exceedance Probability > 25/50 mm



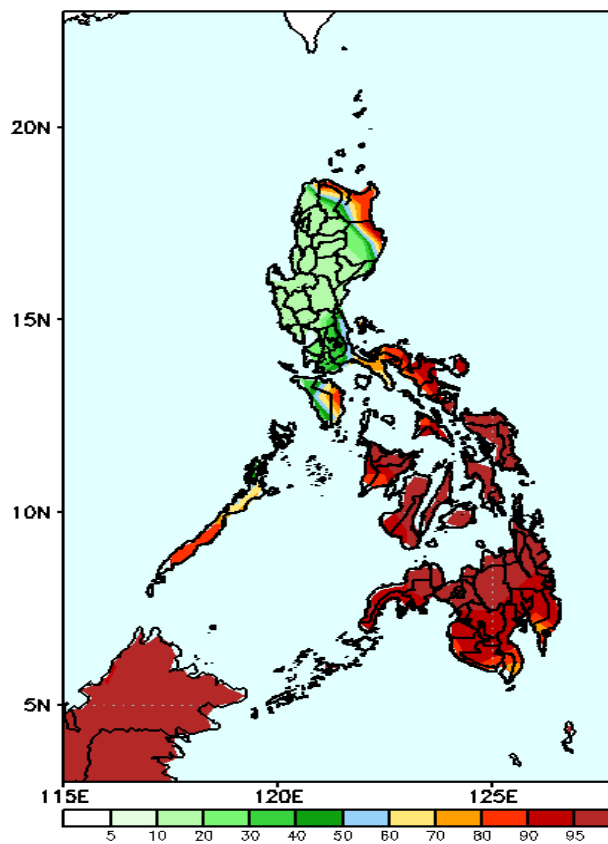
Week 1: Nov 17-23, 2023

GEFS Week-1 Precip Anomaly  
Valid: 20231117 - 20231123



Rainfall deficit of 40-80mm is expected in most parts of northern Luzon and Mindoro while 40-100mm increase of rainfall is more likely in Quezon, Bicol Region, Mindanao and more than 100mm in most parts of Visayas.

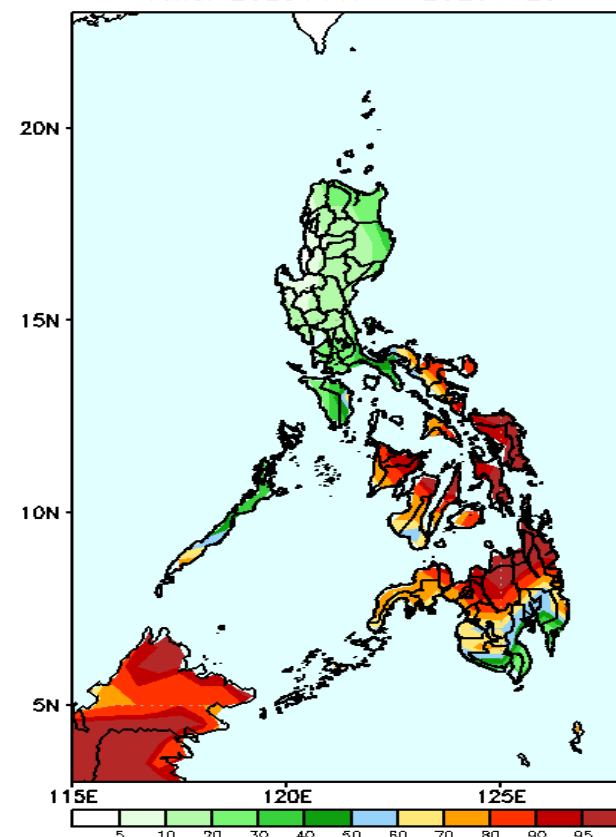
GEFS Week-1 Exceedance Prob. > 25mm  
Valid: 20231117 - 20231123



## Probability to Exceed 25mm

- High to very high over Quezon, Bicol Region, Visayas, and Mindanao;
- Moderate to high over CALABARZON, MIMAROPA, and eastern portion of Cagayan Valley, Cagayan, and Isabela;
- Low to moderate elsewhere.

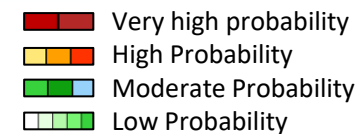
GEFS Week-1 Exceedance Prob. > 50mm  
Valid: 20231117 - 20231123



## Probability to Exceed 50mm

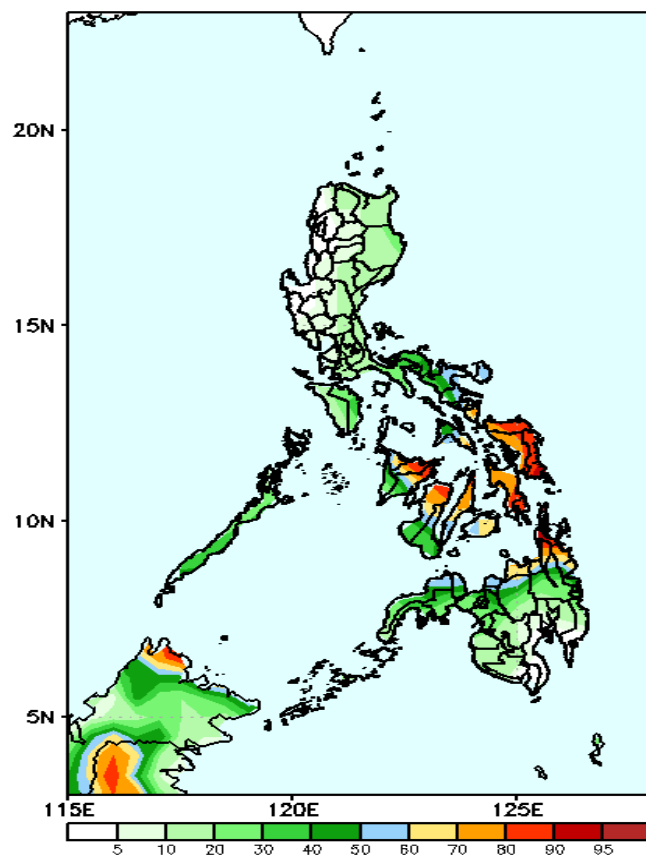
- High to very high over Bicol Region, Visayas, Caraga, Northern Mindanao, and Zamboanga Peninsula;
- Moderate to high over the rest of Mindanao, MIMAROPA, and CALABARZON;
- Low elsewhere.

# Exceedance Probability > 100/150/200 mm



Week 1: Nov 17-23, 2023

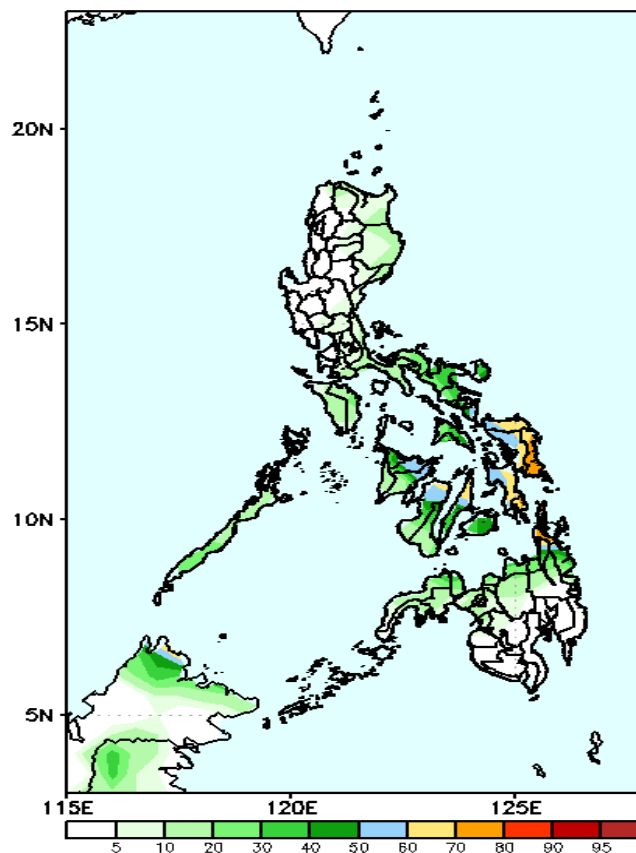
GEFS Week-1 Exceedance Prob. > 100mm  
Valid: 20231117 - 20231123



## Probability to Exceed 100mm

- Moderate to high over the Bicol Region, Visayas, and northern portions of Caraga, and Northern Mindanao;
- Low elsewhere.

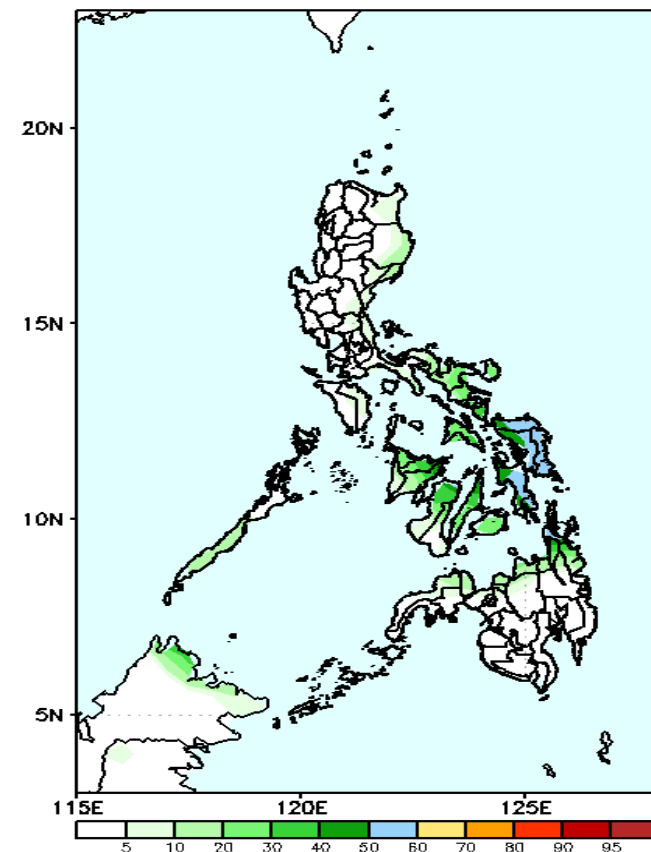
GEFS Week-1 Exceedance Prob. > 150mm  
Valid: 20231117 - 20231123



## Probability to Exceed 150mm

- Moderate to high over the eastern portion of Bicol Region, Eastern Visayas, and northern portions of Central and Western Visayas;
- Low elsewhere.

GEFS Week-1 Exceedance Prob. > 200mm  
Valid: 20231117 - 20231123



## Probability to Exceed 200mm

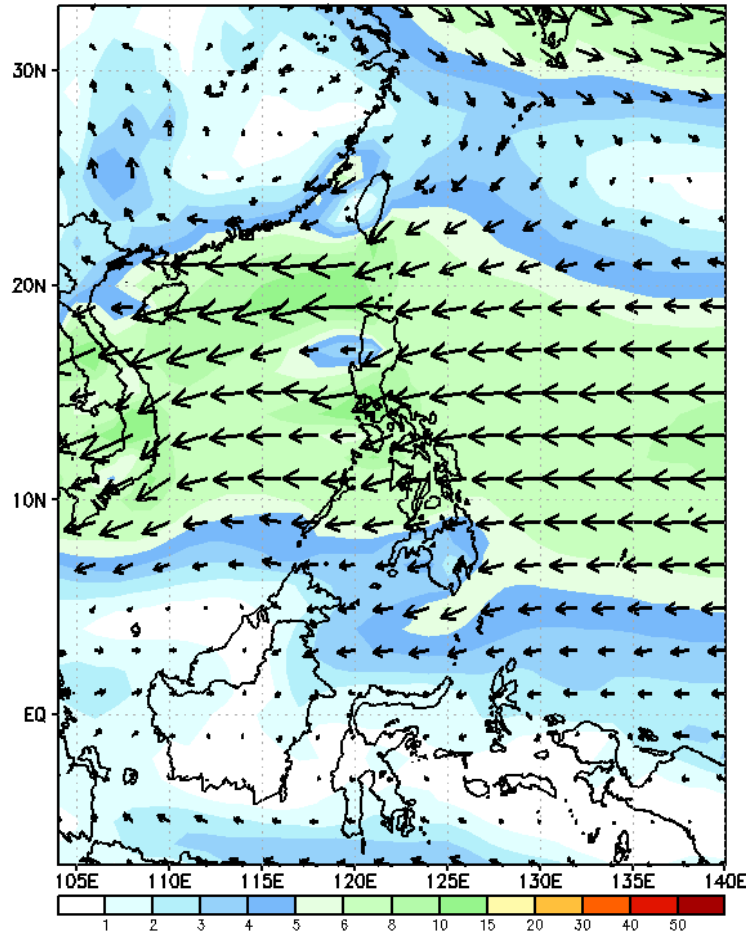
- Low in most parts of the country.



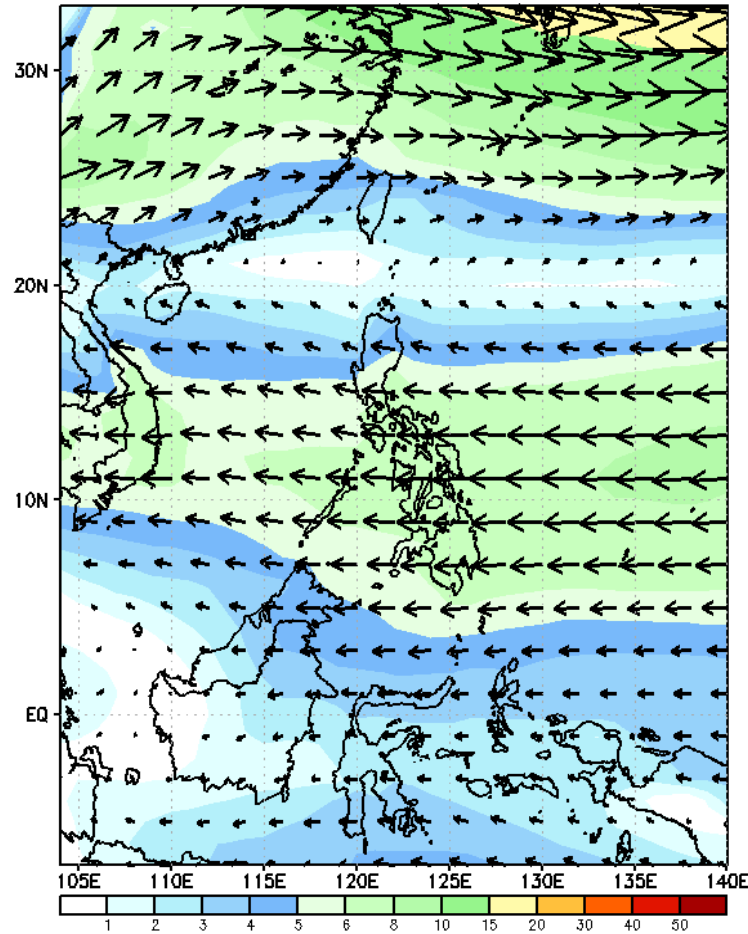
# GEFS Week-2 Forecasts: Wind Forecast

Week 2: Nov 24-30, 2023

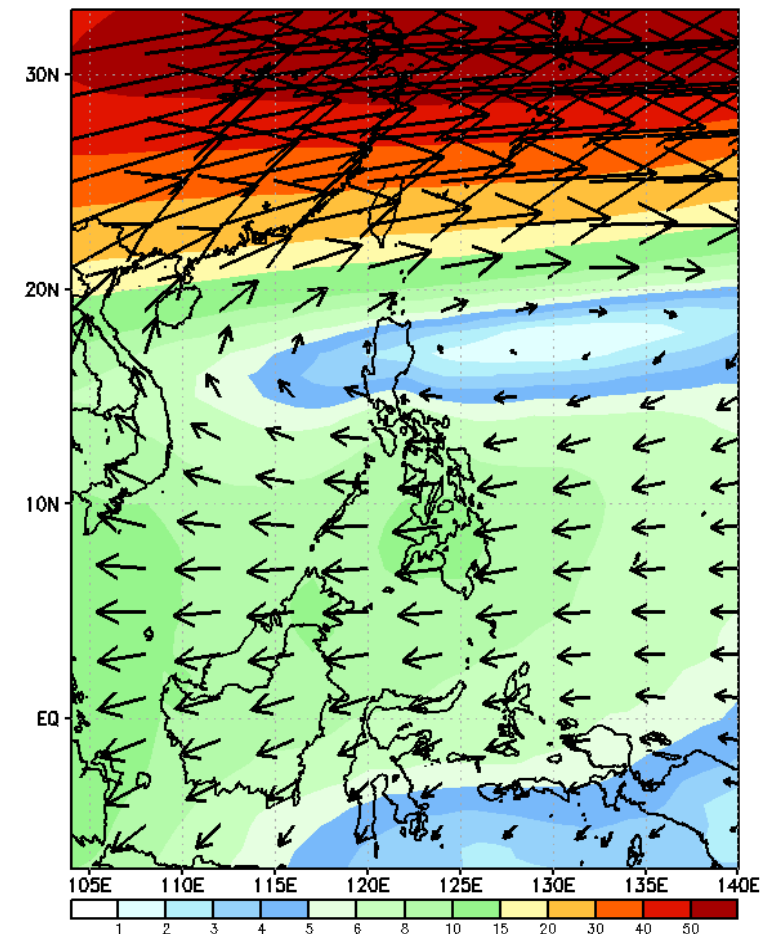
GEFS Week-2 850-hPa Wind Total  
Valid: 20231124 - 20231130



GEFS Week-2 700-hPa Wind Total  
Valid: 20231124 - 20231130



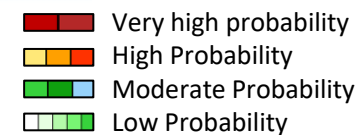
GEFS Week-2 200-hPa Wind Total  
Valid: 20231124 - 20231130



Northeast Monsoon affecting Extreme Northern Luzon. Easterlies affecting the rest of the country.

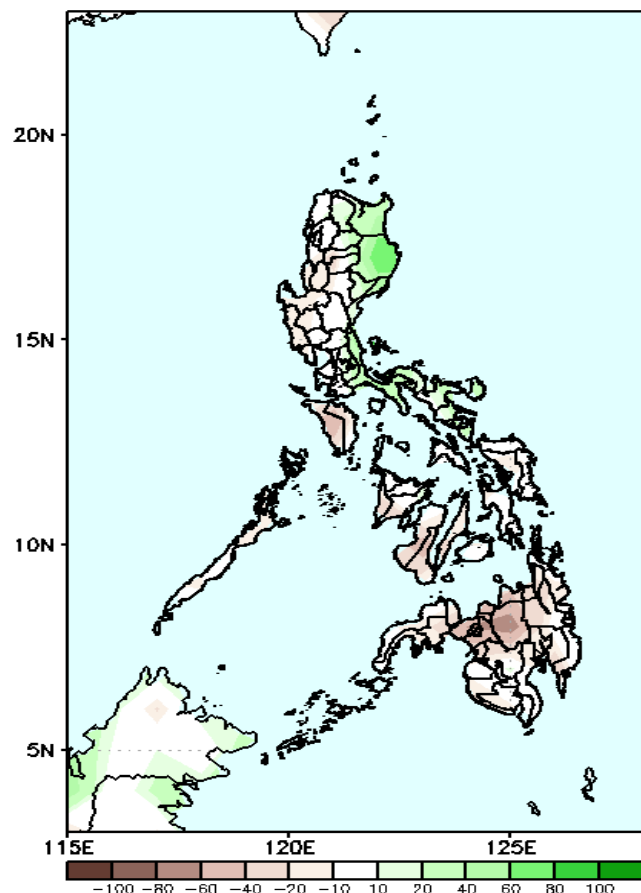


# Precipitation Anomaly and Exceedance Probability > 25/50 mm



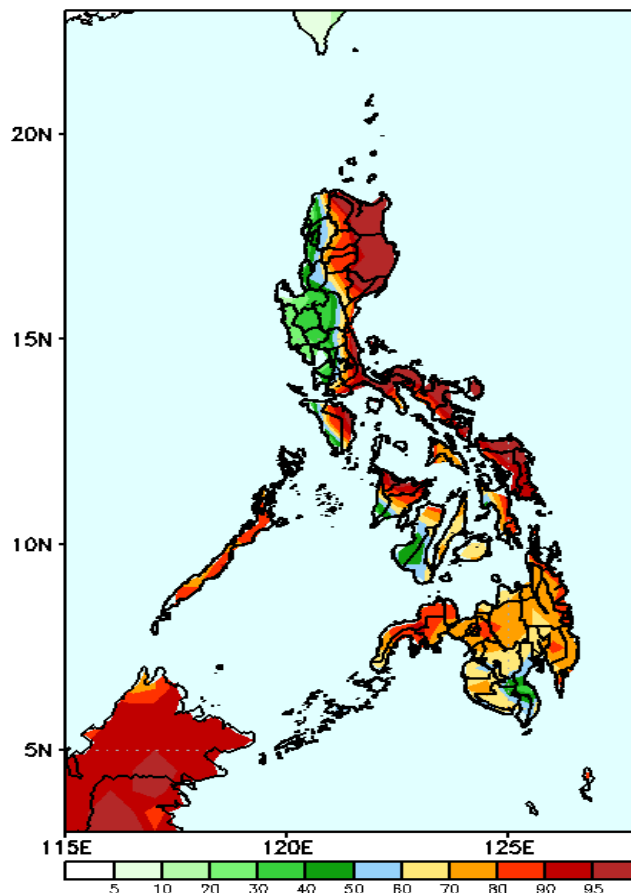
Week 2: Nov 24-30, 2023

GEFS Week-2 Precip Anomaly  
Valid: 20231124 - 20231130



Rainfall deficit of 10-60mm is expected in most parts of the country except in Cagayan, Isabela and southern Luzon where 20-60mm increase of rainfall is more likely.

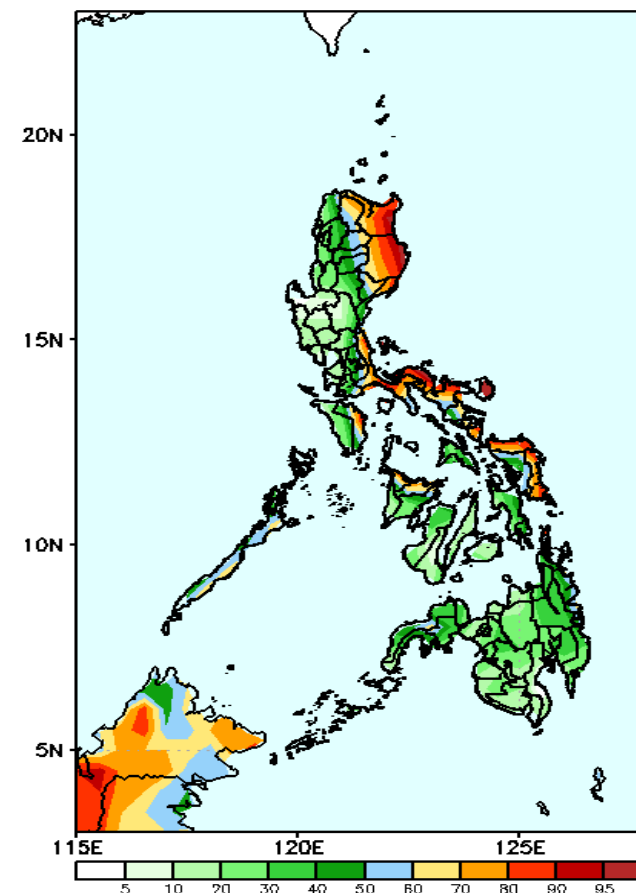
GEFS Week-2 Exceedance Prob. > 25mm  
Valid: 20231124 - 20231130



## Probability to Exceed 25mm

- High to very high over Cagayan Valley, Aurora, Quezon, Bicol Region, Capiz, and most of Mindanao
- Moderate to high over the rest of Visayas, CAR, MIMAROPA, the southern portion of Mindanao, and the rest of CALABARZON
- Low over the rest of Luzon

GEFS Week-2 Exceedance Prob. > 50mm  
Valid: 20231124 - 20231130



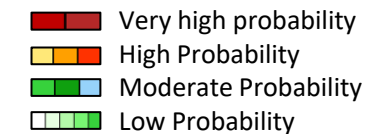
## Probability to Exceed 50mm

- Moderate to high over Oriental Mindoro, Capiz, and in the eastern section of the country
- Low elsewhere.

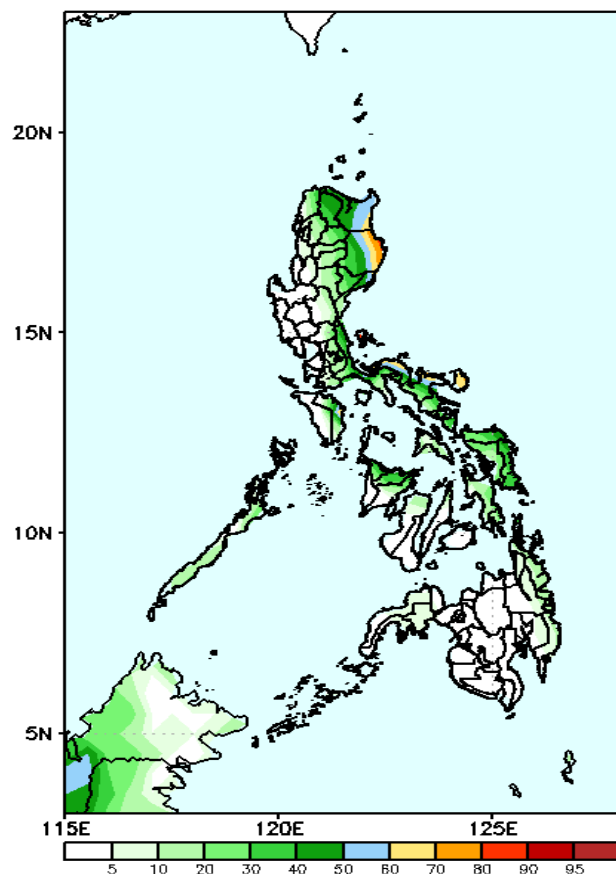


# Exceedance Probability > 100/150/200 mm

Week 2: Nov 24-30, 2023



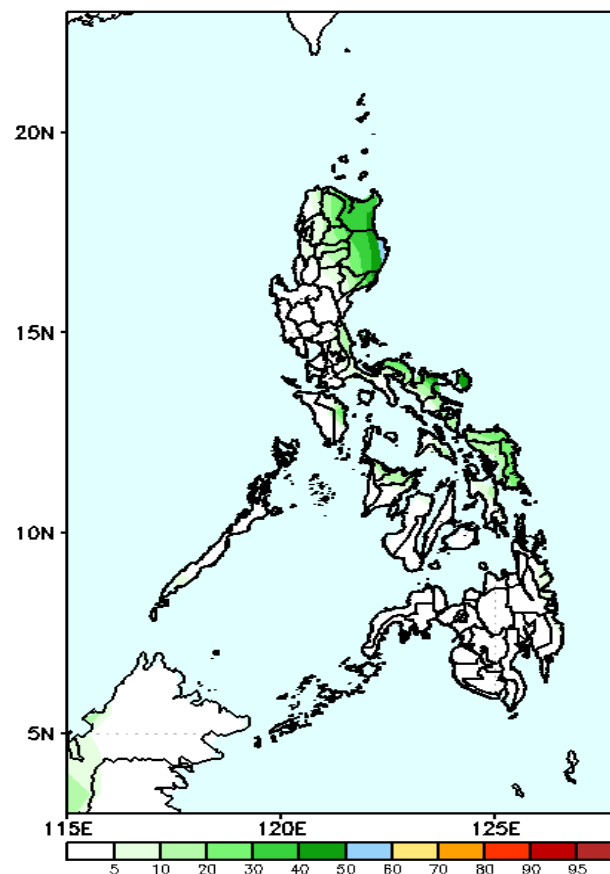
GEFS Week-2 Exceedance Prob. > 100mm  
Valid: 20231124 - 20231130



## Probability to Exceed 100mm

- Moderate over the eastern sections of Cagayan Valley, Bicol Region and Samar Provinces
- Low over the rest of the country.

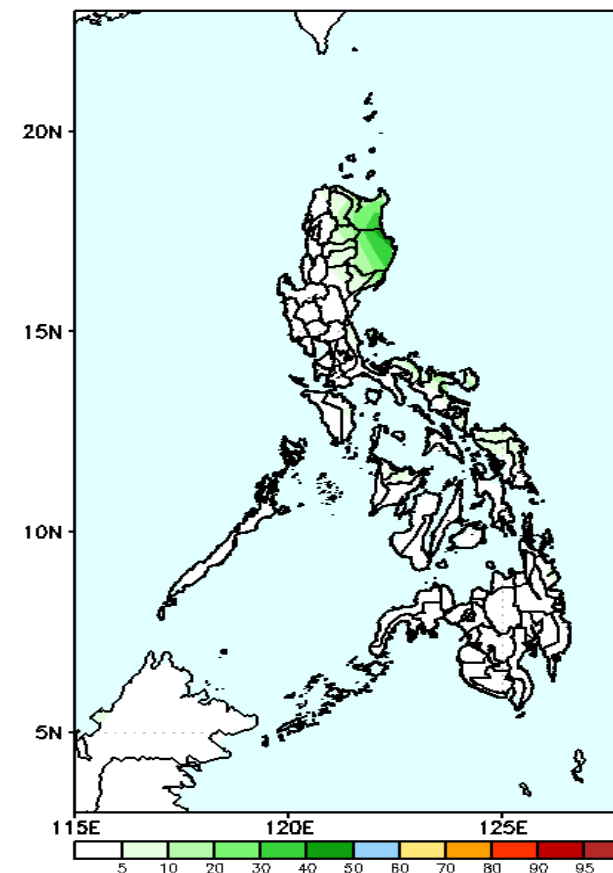
GEFS Week-2 Exceedance Prob. > 150mm  
Valid: 20231124 - 20231130



## Probability to Exceed 150mm

- Low in most parts of the country.

GEFS Week-2 Exceedance Prob. > 200mm  
Valid: 20231124 - 20231130

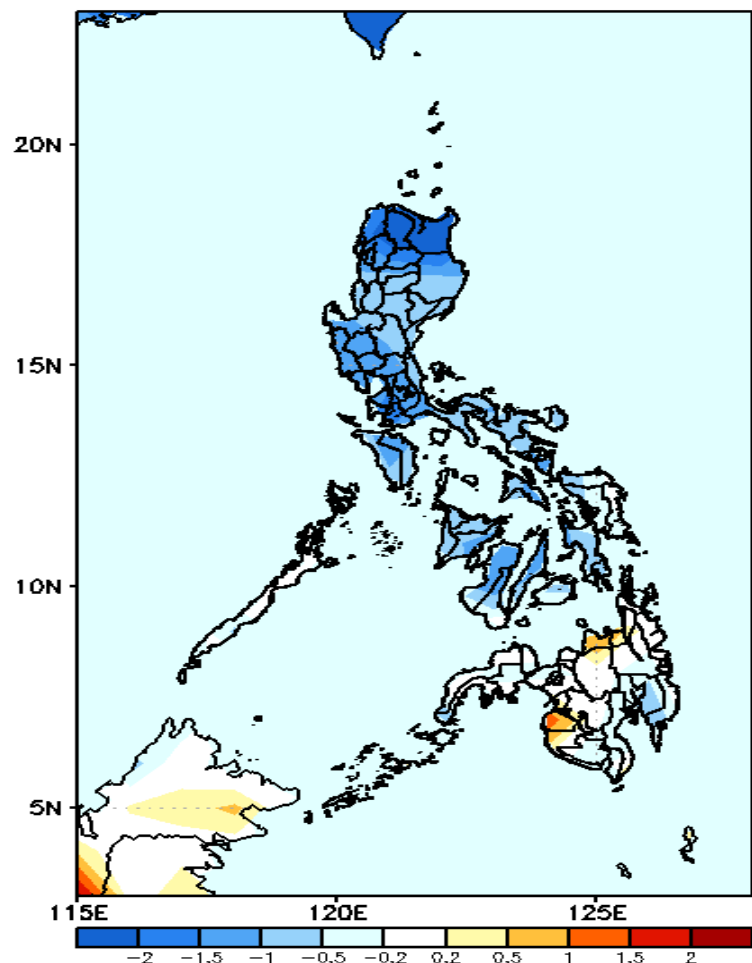


## Probability to Exceed 200mm

- Low in most parts of the country.

# GEFS Week-1 & 2 Forecasts: T2m Anomaly

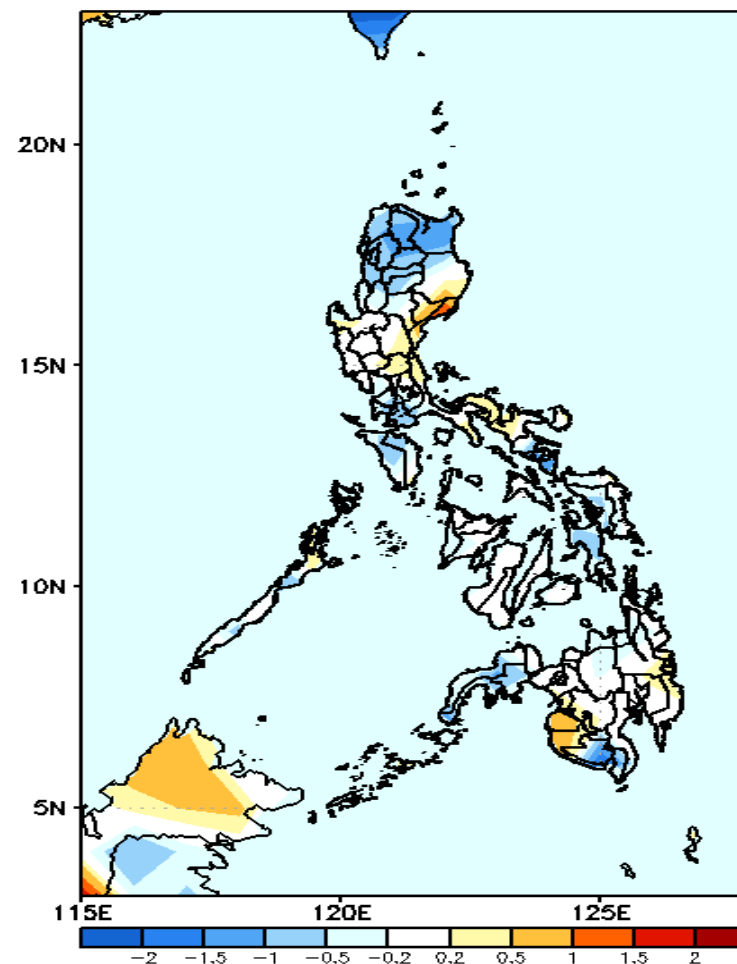
GEFS Week-1 T2m Anomaly  
Valid: 20231117 - 20231123



## 2m Temperature Week 1: Nov 17-23, 2023

Average to cooler than average surface air temperature will likely be experienced in most parts of Luzon and Visayas while Mindanao will likely have average temperature except in Sultan Kudarat and Misamis Oriental, slightly warmer to warmer temperatures.

GEFS Week-2 T2m Anomaly  
Valid: 20231124 - 20231130



## 2m Temperature Week 2: Nov 24-30, 2023

Average to cooler than average surface air temperature will likely be experienced in most parts of the country except in most parts of Eastern Luzon, Maguindanao and Sultan Kudarat where slightly warmer than average temperature is expected.