



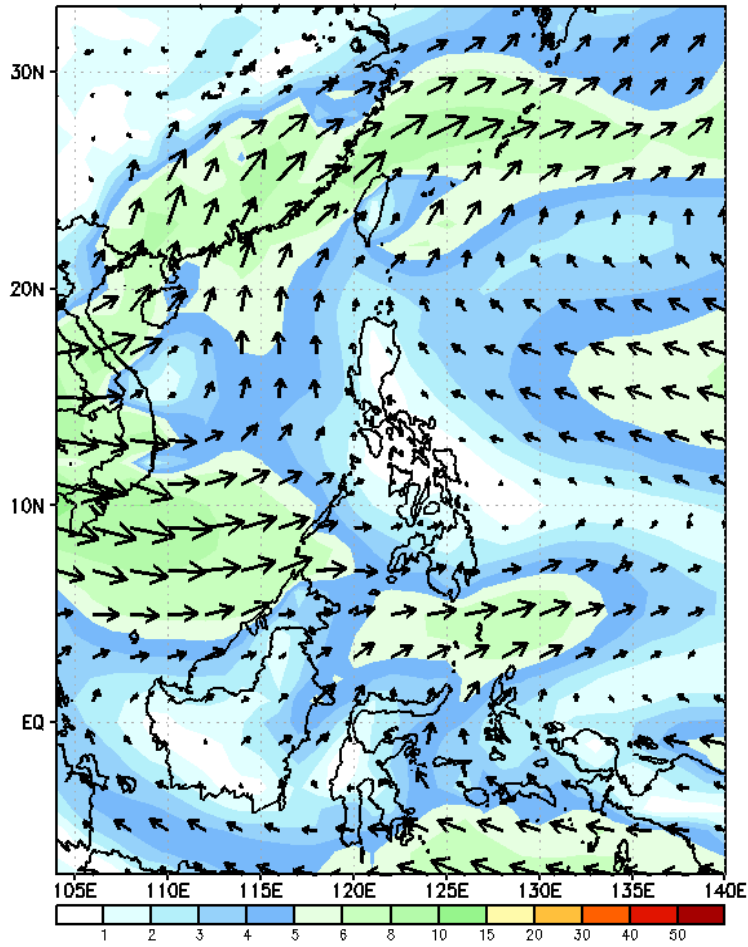
Week 1 & Week 2 Forecast for the Philippines using GEFS Model



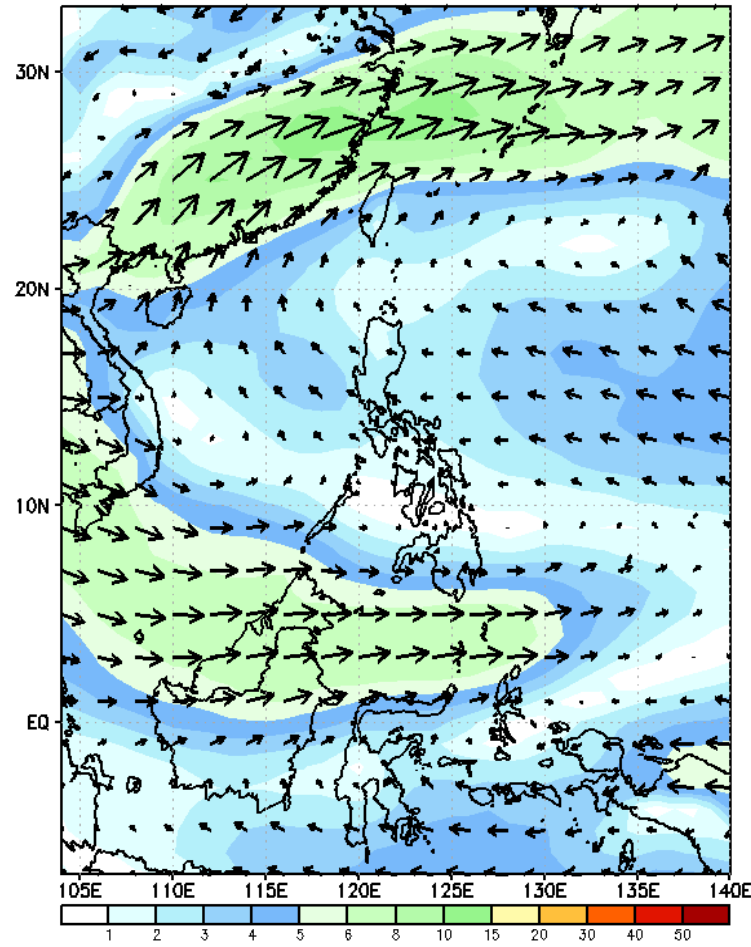
GEFS Week-1 Forecasts: Wind Forecast

Week 1: June 19-25, 2023

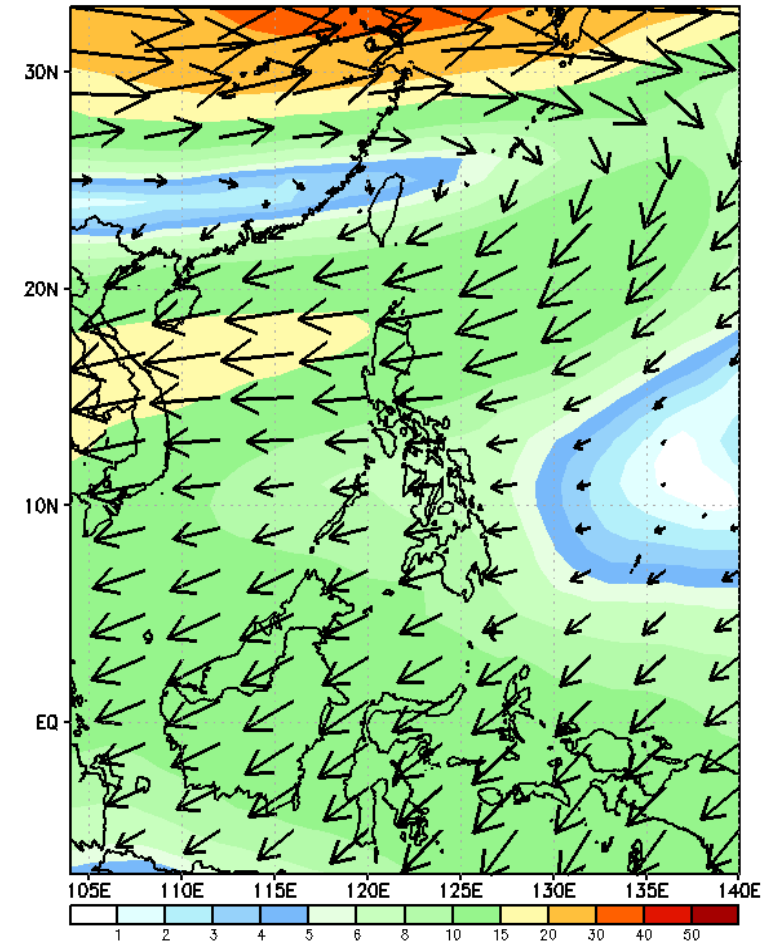
GEFS Week-1 850-hPa Wind Total
Valid: 20230619 - 20230625



GEFS Week-1 700-hPa Wind Total
Valid: 20230619 - 20230625

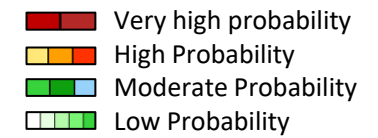


GEFS Week-1 200-hPa Wind Total
Valid: 20230619 - 20230625



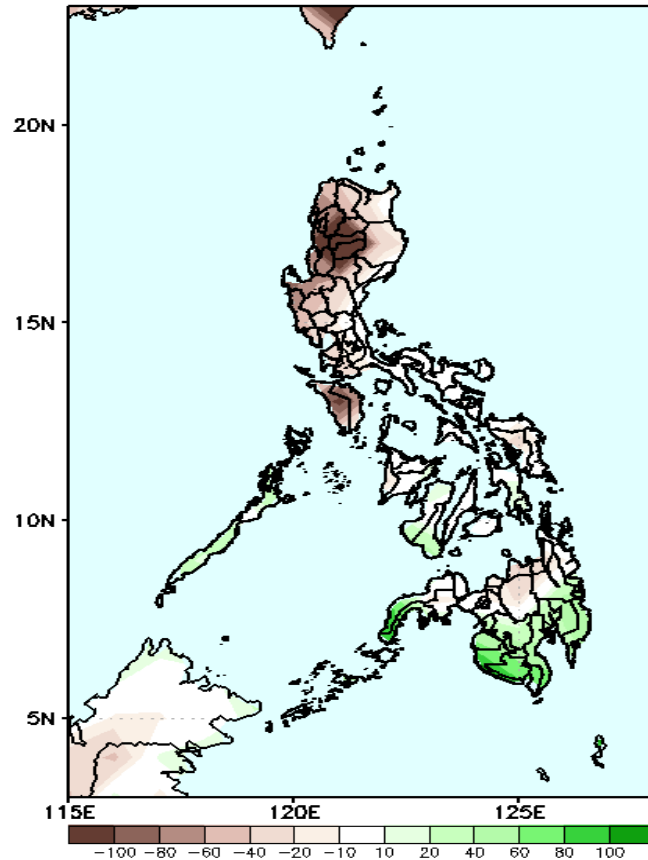
Weak Southwest Monsoon is forecasted to affect the western sections of the country while Easterlies will likely affect the eastern section of Luzon and Visayas.

Precipitation Anomaly and Exceedance Probability > 25/50 mm

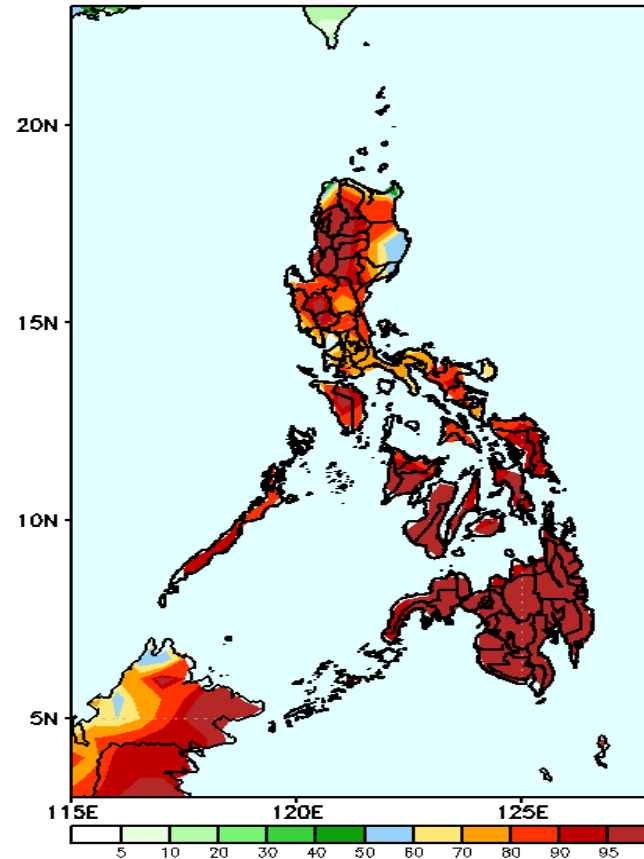


Week 1: June 19-25, 2023

GEFS Week-1 Precip Anomaly
Valid: 20230619 - 20230625

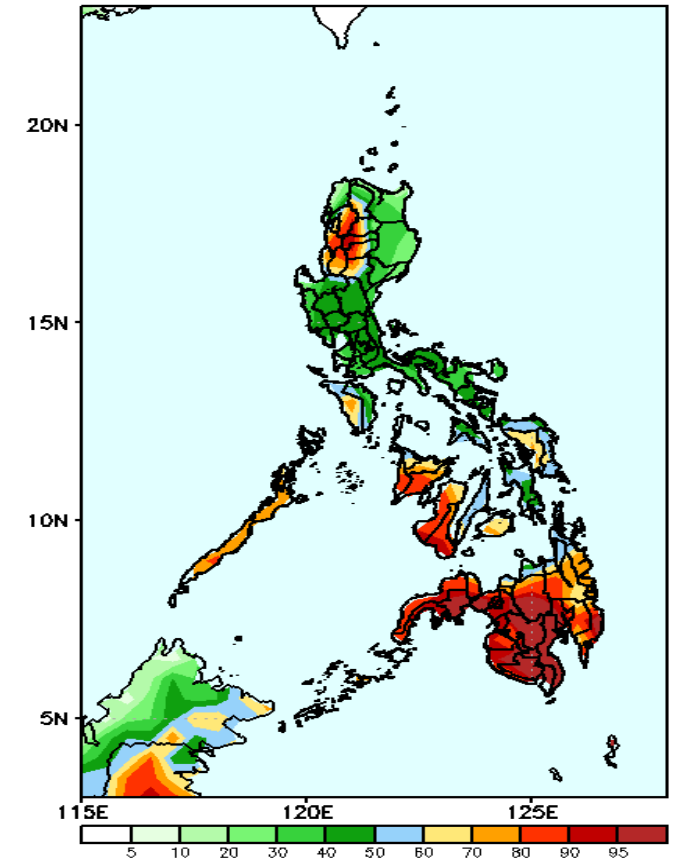


GEFS Week-1 Exceedance Prob. > 25mm
Valid: 20230619 - 20230625

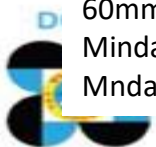


Rainfall deficit of more than 100mm is expected in most parts of CAR, Ilocos Region and Mindoro; 20-60mm in most parts of Luzon, Visayas and northern Mindanao while Palawan, Negros Island and the rest of Mindanao will likely have 20-80mm increase of rainfall.

GEFS Week-1 Exceedance Prob. > 50mm
Valid: 20230619 - 20230625

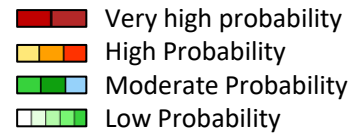


High to a very high probability to exceed 50mm of rainfall in most parts of Western Visayas and Mindanao; moderate to high likelihood in CAR, La Union, MIMAROPA and the rest of Visayas while moderate chance over the rest of Luzon.

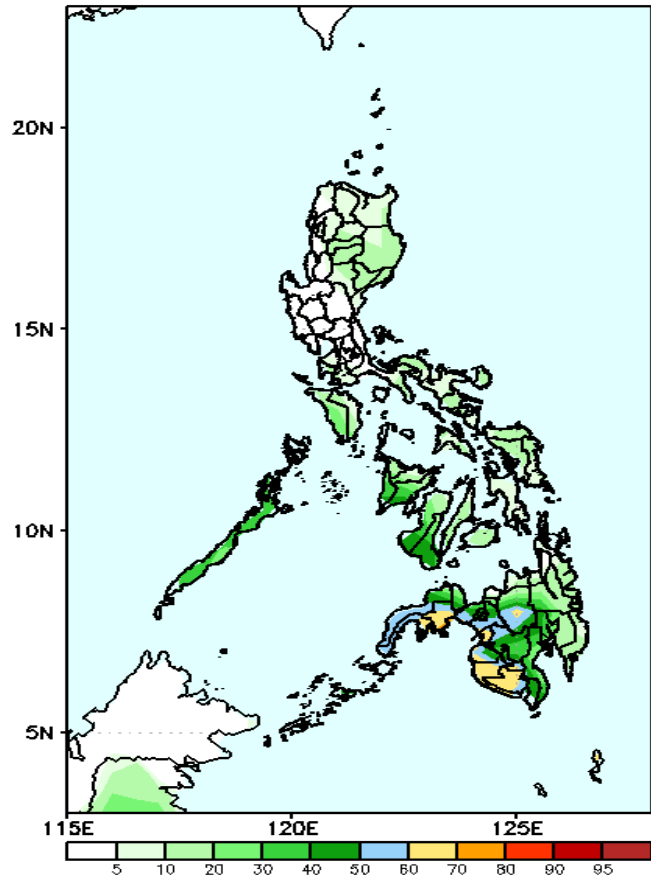


Exceedance Probability > 100/150/200 mm

Week 1: June 19-25, 2023

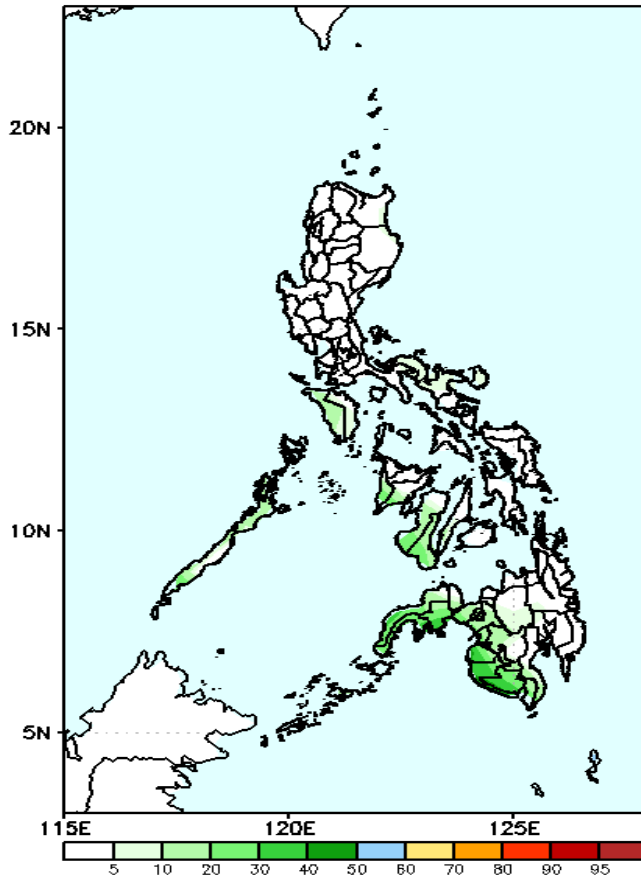


GEFS Week-1 Exceedance Prob. > 100mm
Valid: 20230619 - 20230625



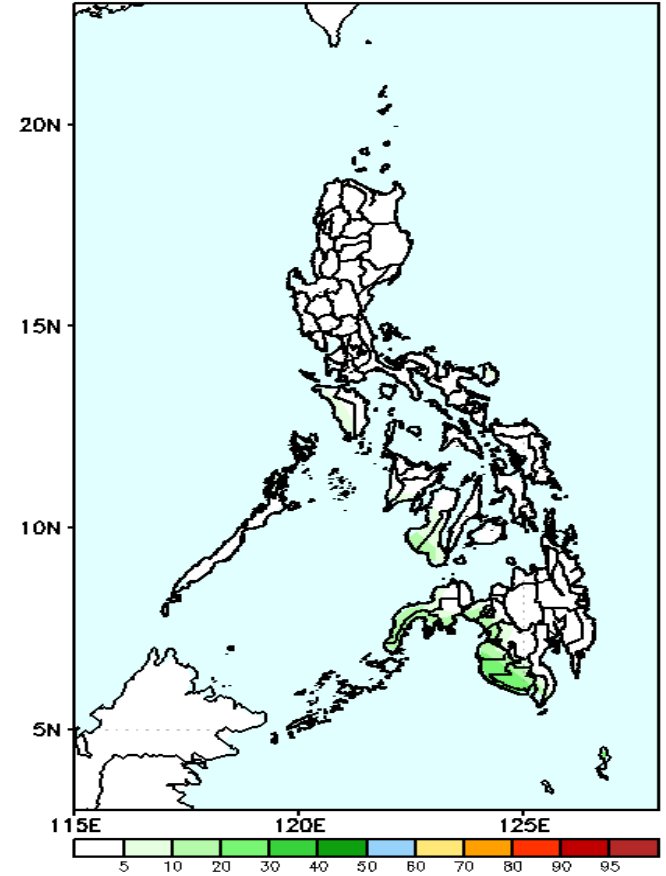
Low to moderate probability to exceed 100mm of rainfall in most parts of Mindanao while low likelihood over the rest of the country.

GEFS Week-1 Exceedance Prob. > 150mm
Valid: 20230619 - 20230625



Low probability to exceed 150mm of rainfall over the rest of the country.

GEFS Week-1 Exceedance Prob. > 200mm
Valid: 20230619 - 20230625

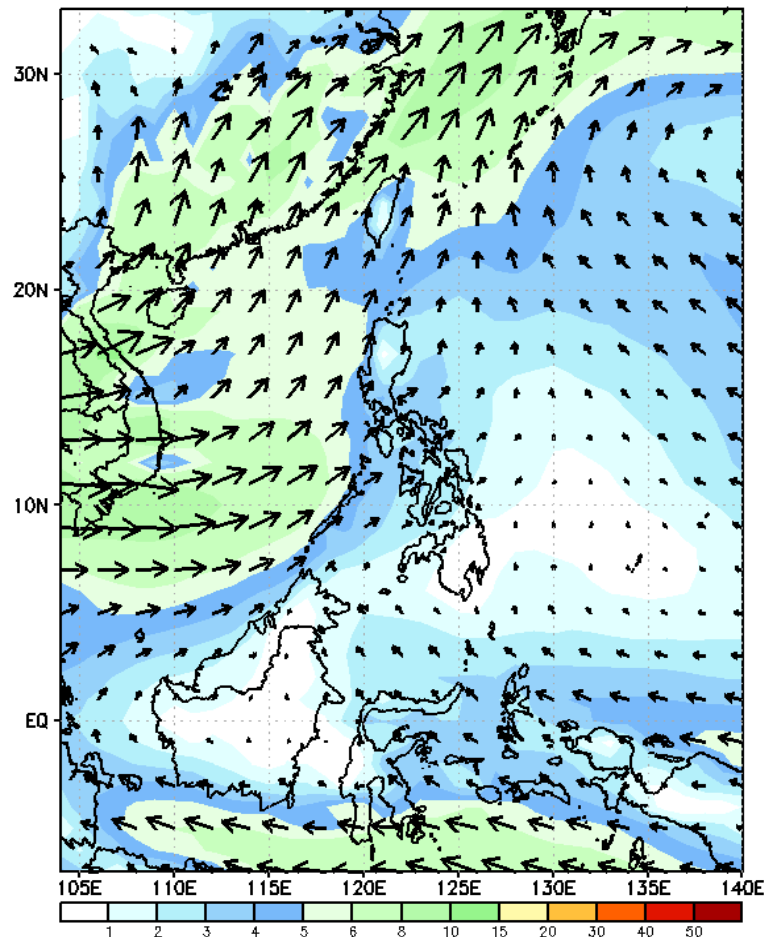


Low probability to exceed 200mm of rainfall over the rest of the country.

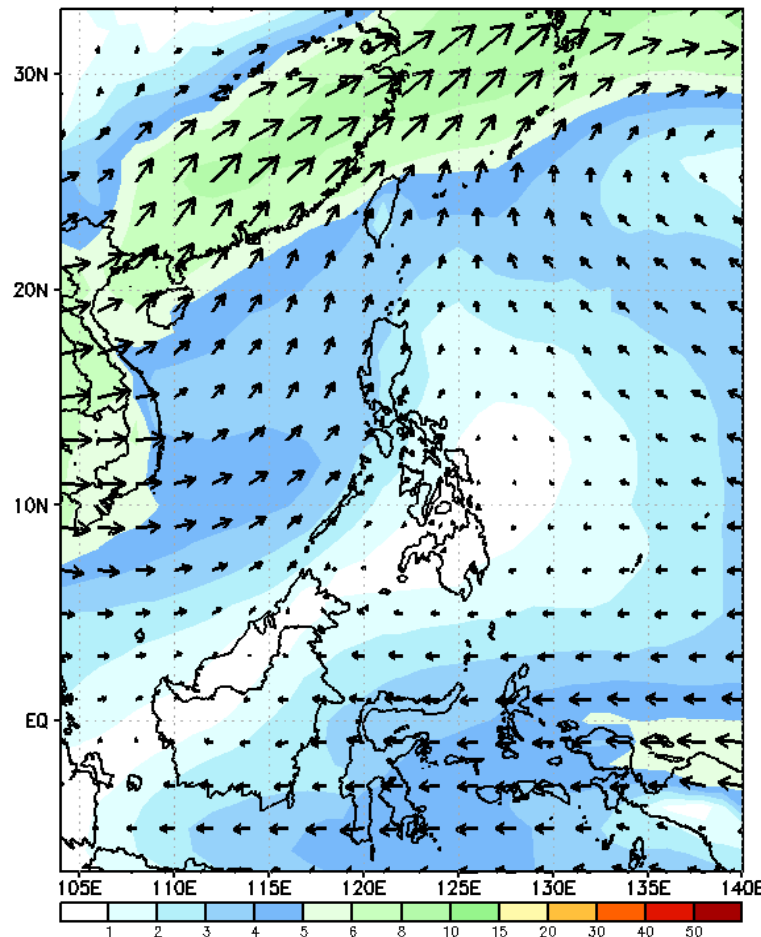
GEFS Week-2 Forecasts: Wind Forecast

Week 2: June 23-29, 2023

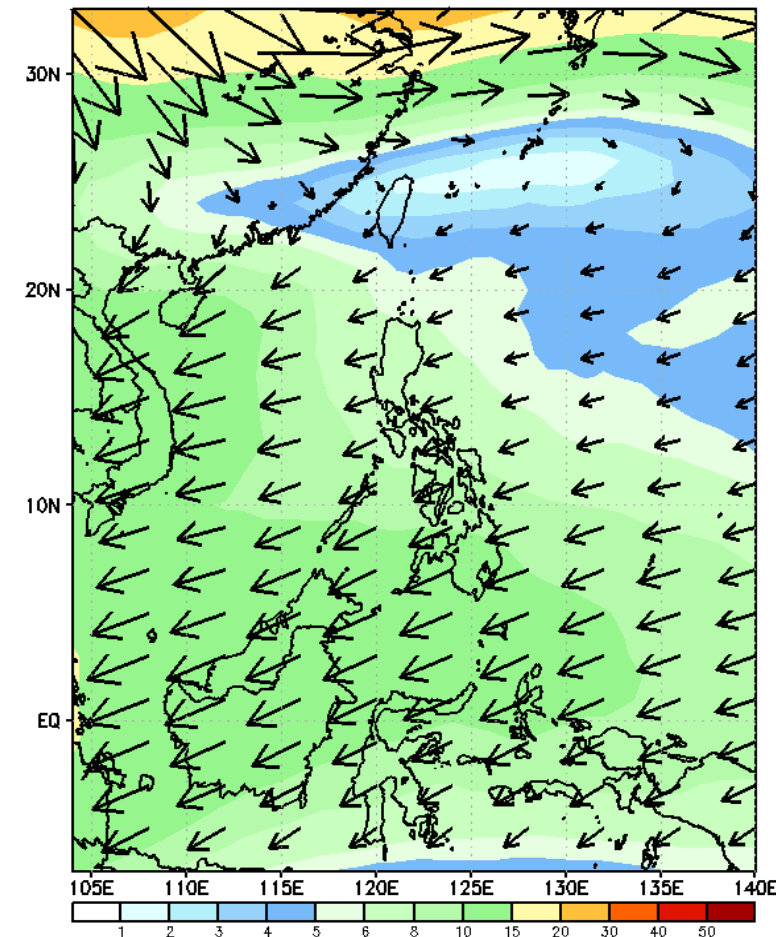
GEFS Week-2 850-hPa Wind Total
Valid: 20230626 - 20230702



GEFS Week-2 700-hPa Wind Total
Valid: 20230626 - 20230702

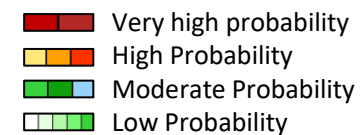


GEFS Week-2 200-hPa Wind Total
Valid: 20230626 - 20230702



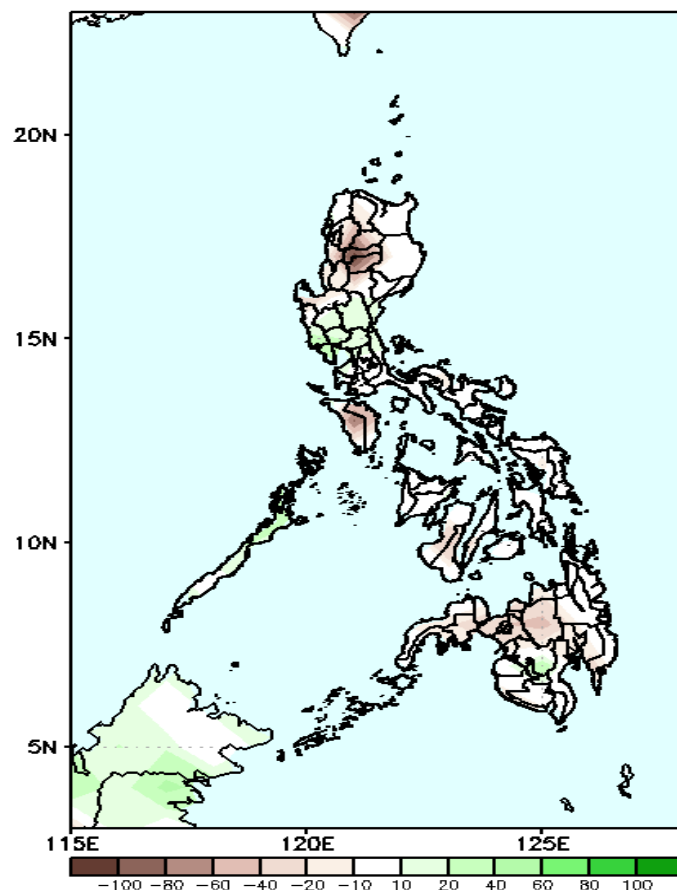
Southwest Monsoon is forecasted to affect Luzon and the Western section of Visayas, while Easterlies will likely affect the eastern section of Visayas and most parts of Mindanao.

Precipitation Anomaly and Exceedance Probability > 25/50 mm



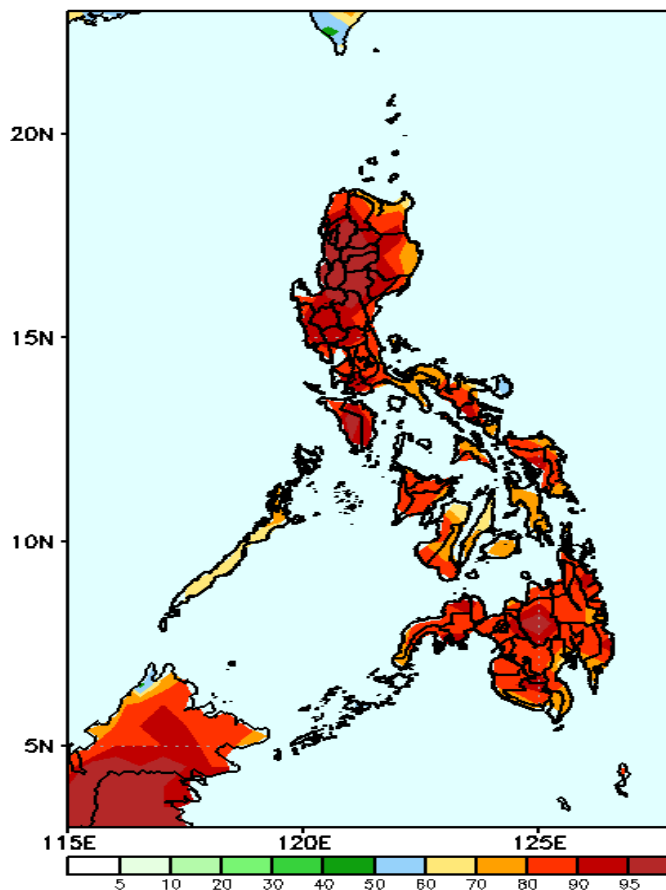
Week 2: June 23-29, 2023

GEFS Week-2 Precip Anomaly
Valid: 20230626 - 20230702



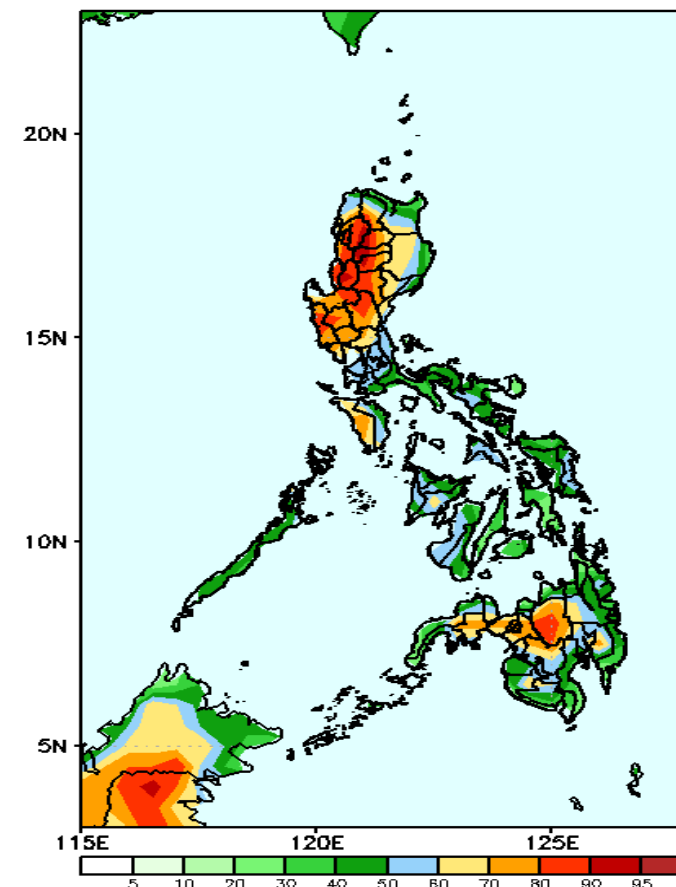
Rainfall deficit of 20-70mm is expected in most parts of the country except in Central Luzon where 10-30mm increase of rainfall is more likely.

GEFS Week-2 Exceedance Prob. > 25mm
Valid: 20230626 - 20230702



High to a very high probability to exceed 25mm in most parts of the country.

GEFS Week-2 Exceedance Prob. > 50mm
Valid: 20230626 - 20230702



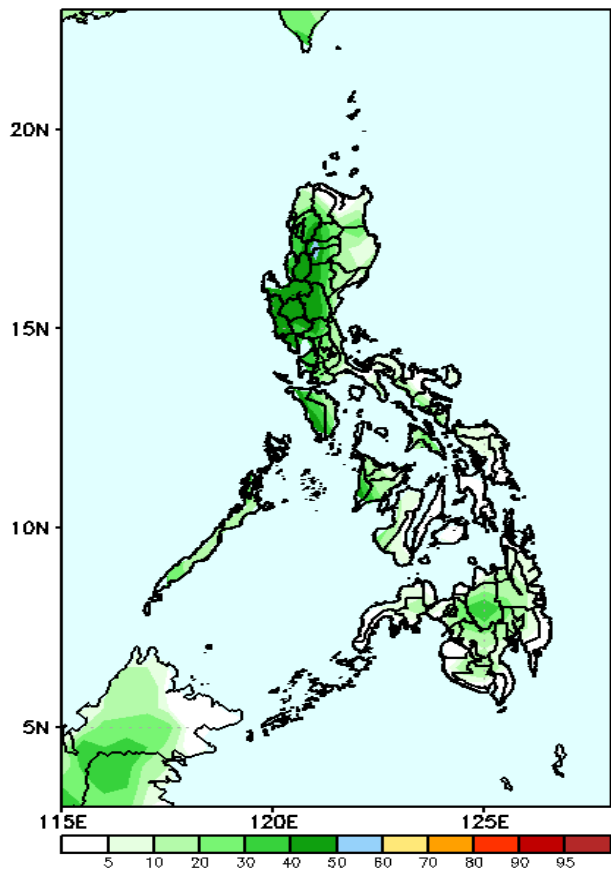
Moderate to high probability to exceed 50mm of rainfall in most parts of Northern and Central Luzon, Central Mindanao and Zamboanga del Sur while moderate chance over the rest of the country.

Exceedance Probability > 100/150/200 mm

Week 2: June 23-29, 2023

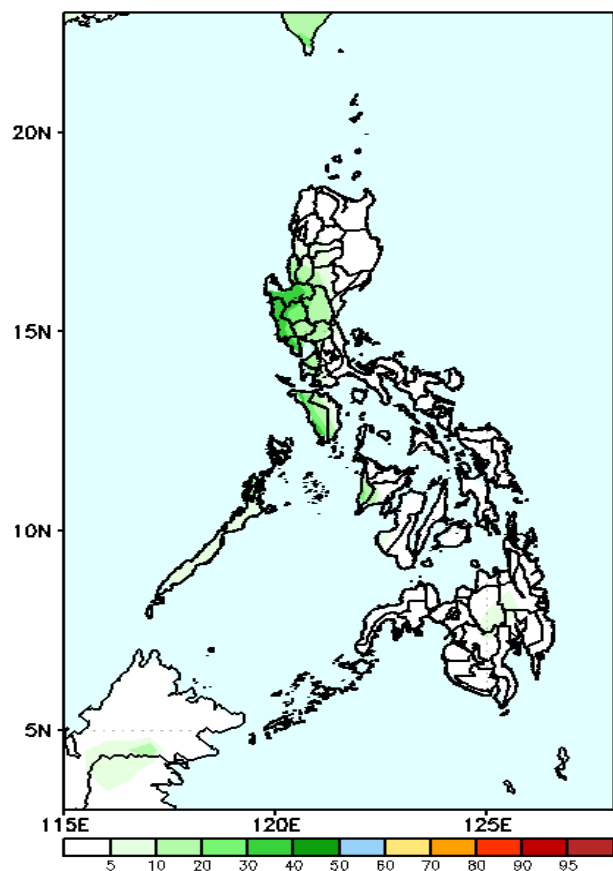
- Very high probability
- High Probability
- Moderate Probability
- Low Probability

GEFS Week-2 Exceedance Prob. > 100mm
Valid: 20230626 – 20230702



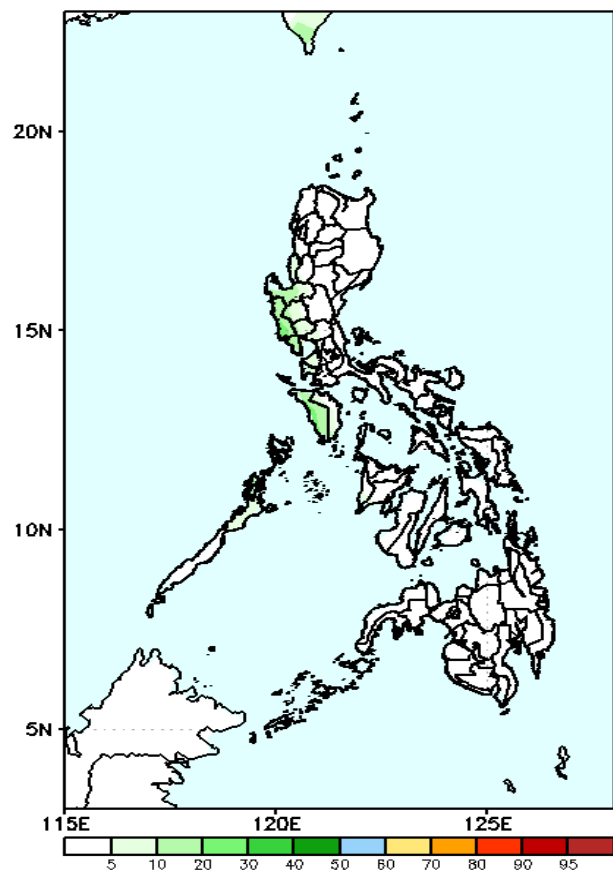
Low to moderate probability to exceed 100mm of rainfall in most parts of the country.

GEFS Week-2 Exceedance Prob. > 150mm
Valid: 20230626 – 20230702



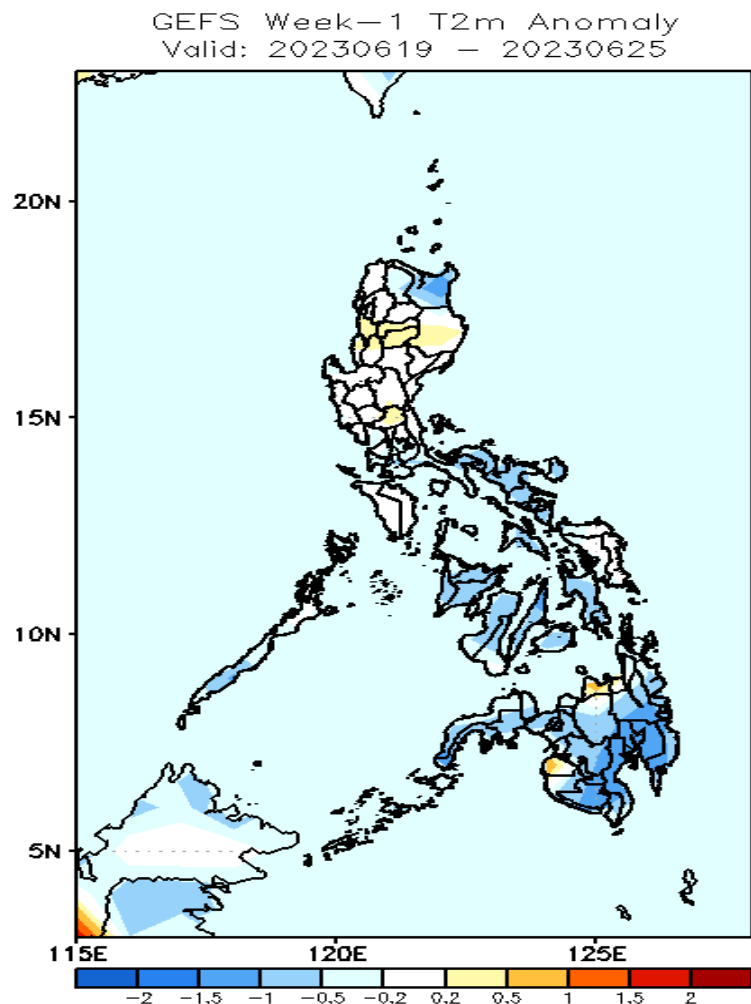
Low probability to exceed 150mm of rainfall over the rest of the country.

GEFS Week-2 Exceedance Prob. > 200mm
Valid: 20230626 – 20230702



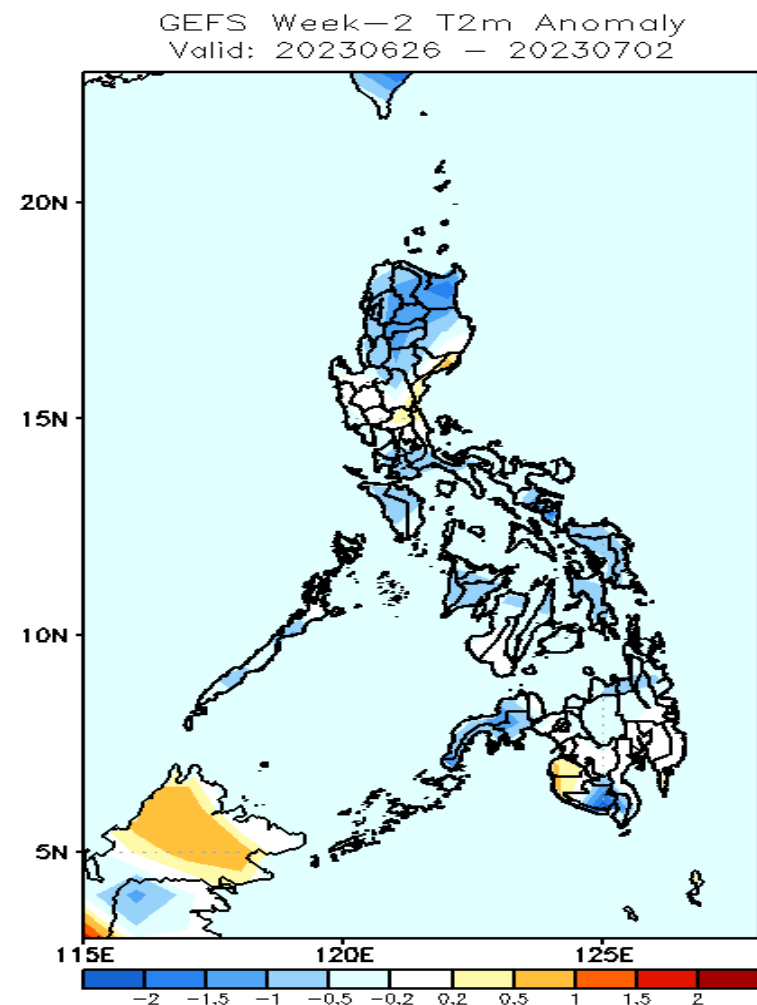
Low probability to exceed 200mm of rainfall over the rest of the country.

GEFS Week-1 & 2 Forecasts: T2m Anomaly



2m Temperature Week 1: June 19-25, 2023

Average to cooler than average surface air temperature will likely experience in most parts of the country except in Maguindanao and Misamis Oriental.



2m Temperature Week 2: June 23-29, 2023

Average to cooler than average surface air temperature will likely experience in most parts of the country except in Maguindanao and Sultan Kudarat.