



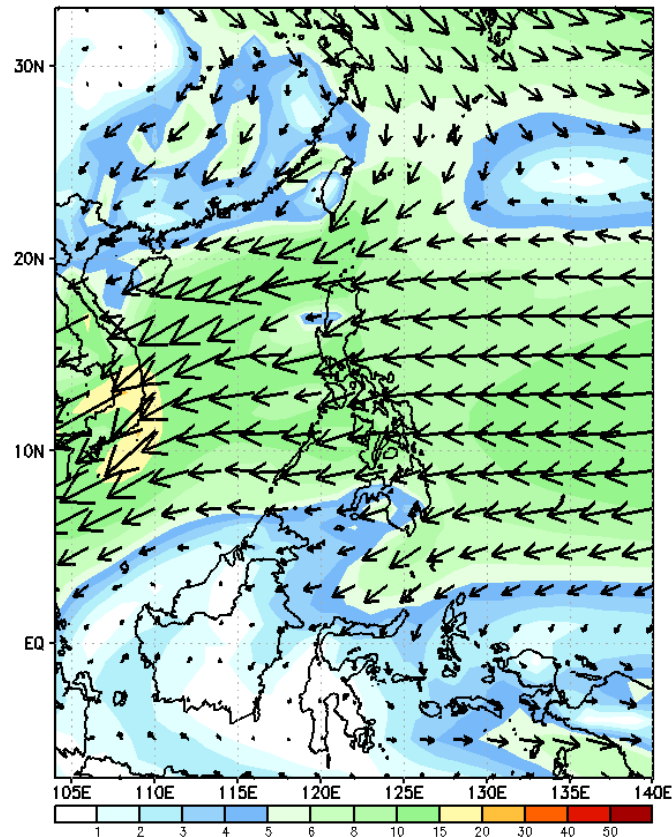
Week 1 & Week 2 Forecast for the Philippines using GEFS Model



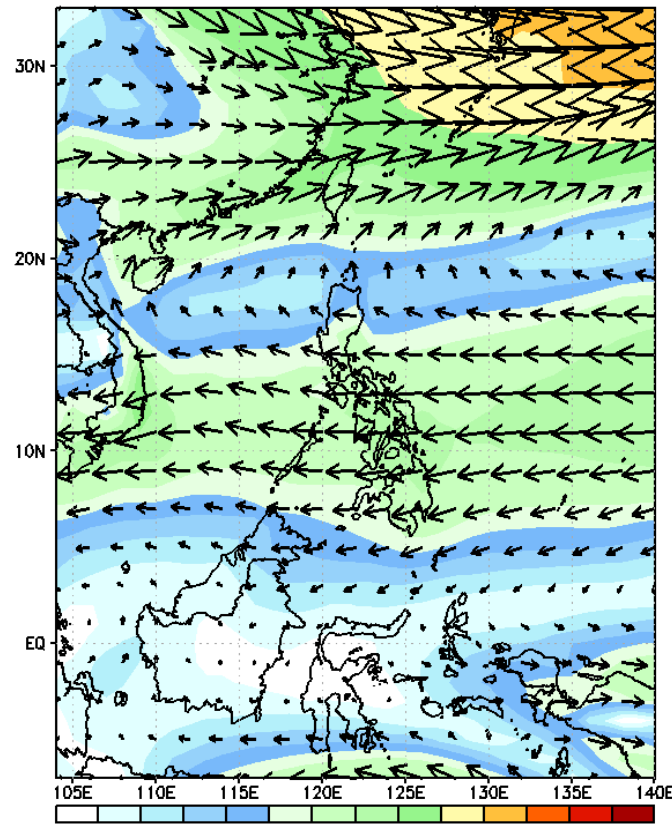
GEFS Week-1 Forecasts: Wind Forecast

Week 1: Dec 20-26, 2023

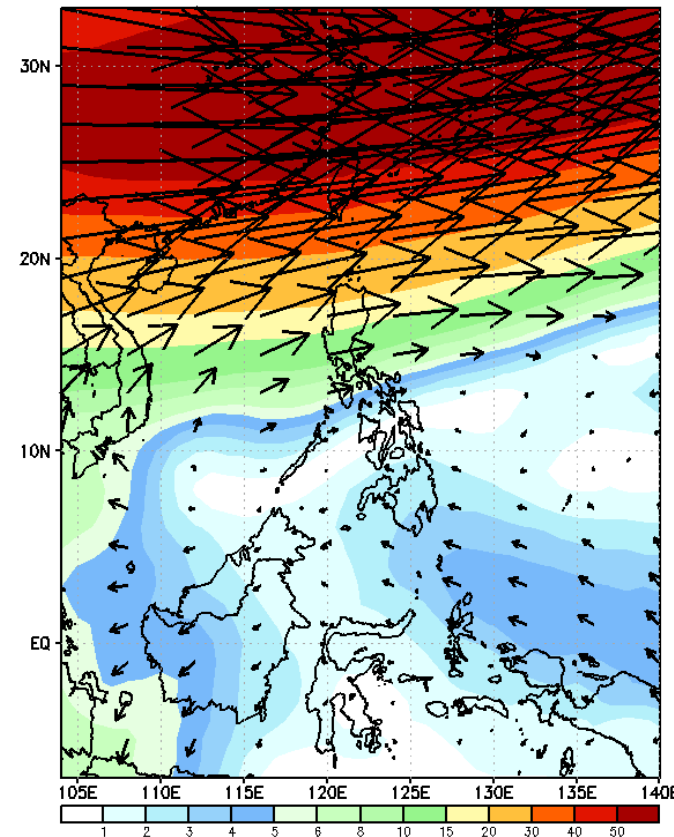
GEFS Week-1 850-hPa Wind Total
Valid: 20231220 - 20231226



GEFS Week-1 700-hPa Wind Total
Valid: 20231220 - 20231226



GEFS Week-1 200-hPa Wind Total
Valid: 20231220 - 20231226



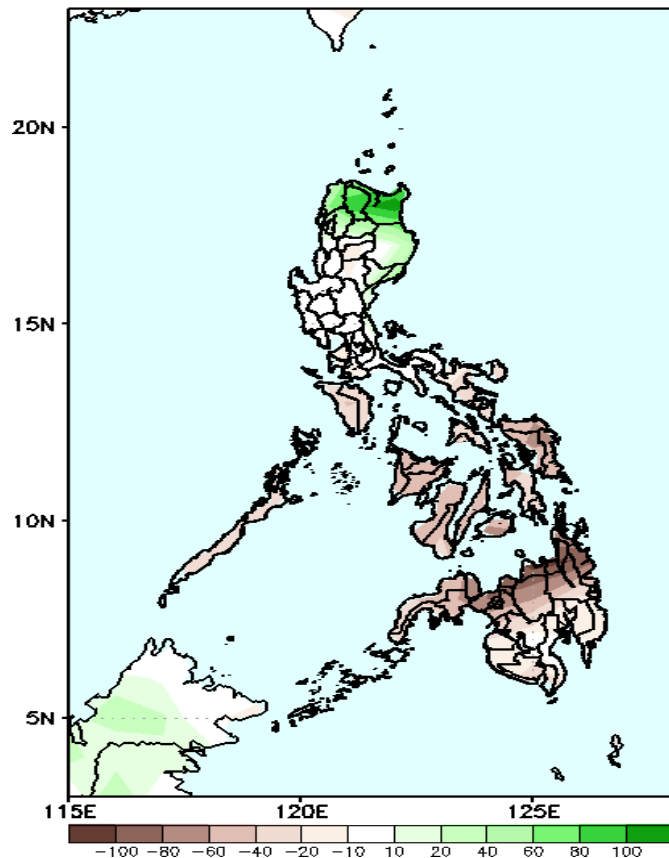
Northeast Monsoon affecting Northern Luzon; Easterlies affecting the rest of the country.

Precipitation Anomaly and Exceedance Probability > 25/50 mm



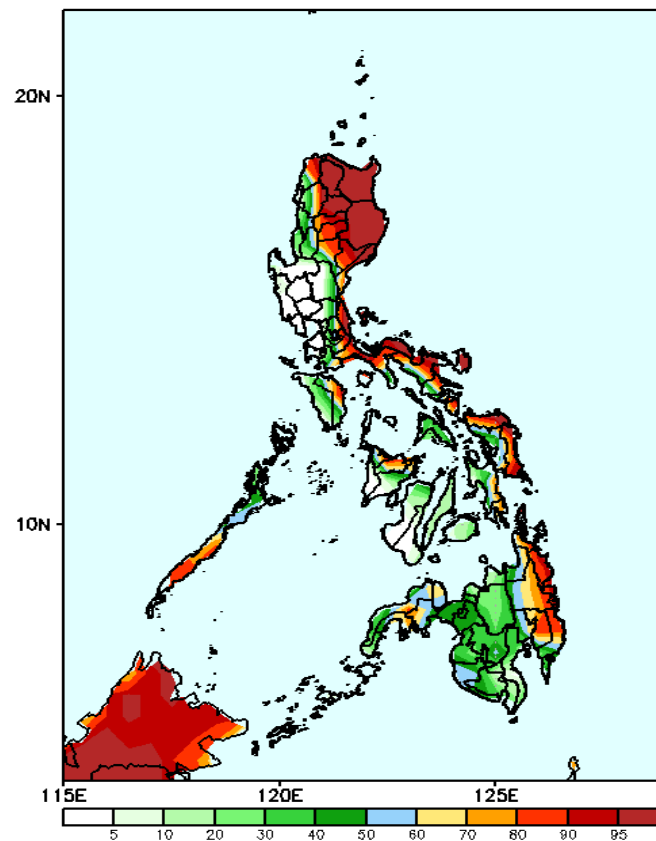
Week 1: Dec 20-26, 2023

GEFS Week-1 Precip Anomaly
Valid: 20231220 - 20231226



Rainfall deficit of 40-80mm in most parts of the country except in Ilocos Norte, Apayao, Kalinga, and most of Cagayan Valley where 40-60mm increase of rainfall is expected.

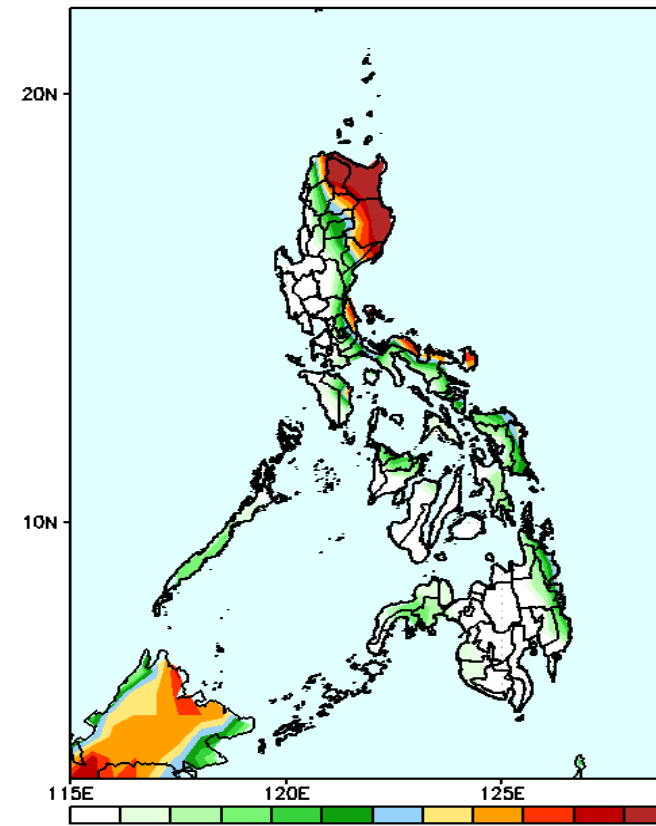
GEFS Week-1 Exceedance Prob. > 25mm
Valid: 20231220 - 20231226



Probability to Exceed 25mm

- High to very high over CAR, the eastern sections of Luzon, Eastern Visayas, and Mindanao, and Southern Palawan;
- Moderate to high over NCR, Rizal, Laguna, rest of MIMAROPA, Capiz, and Western Mindanao;
- Low to moderate over the rest of the country.

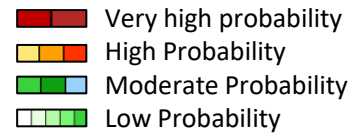
GEFS Week-1 Exceedance Prob. > 50mm
Valid: 20231220 - 20231226



Probability to Exceed 50mm

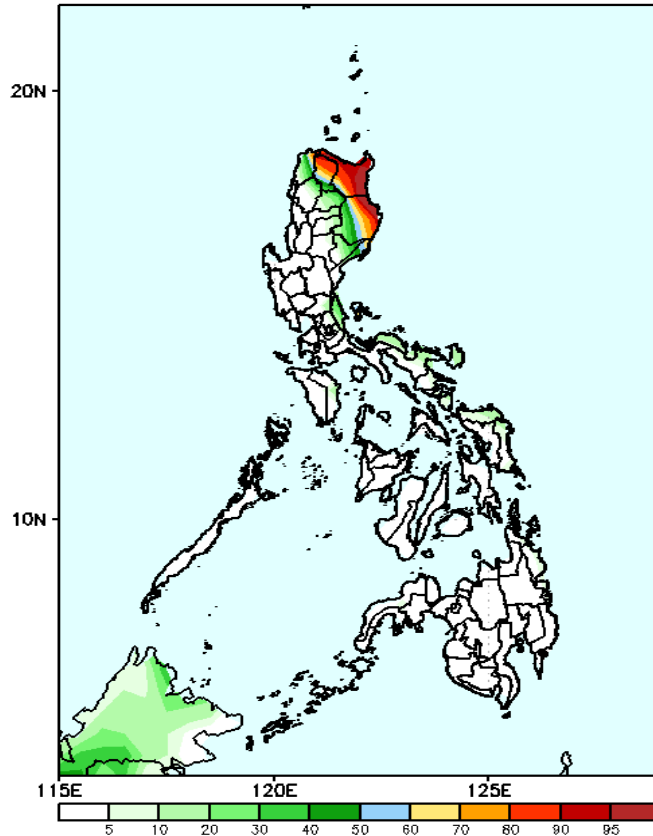
- High to very high over Apayao, Cagayan, Isabela, and the eastern sections of Bicol Region and Quezon
- Moderate to high over Aurora, the rest of CAR, and Samar Provinces;
- Low over the rest of the country.

Exceedance Probability > 100/150/200 mm



Week 1: Dec 18-24, 2023

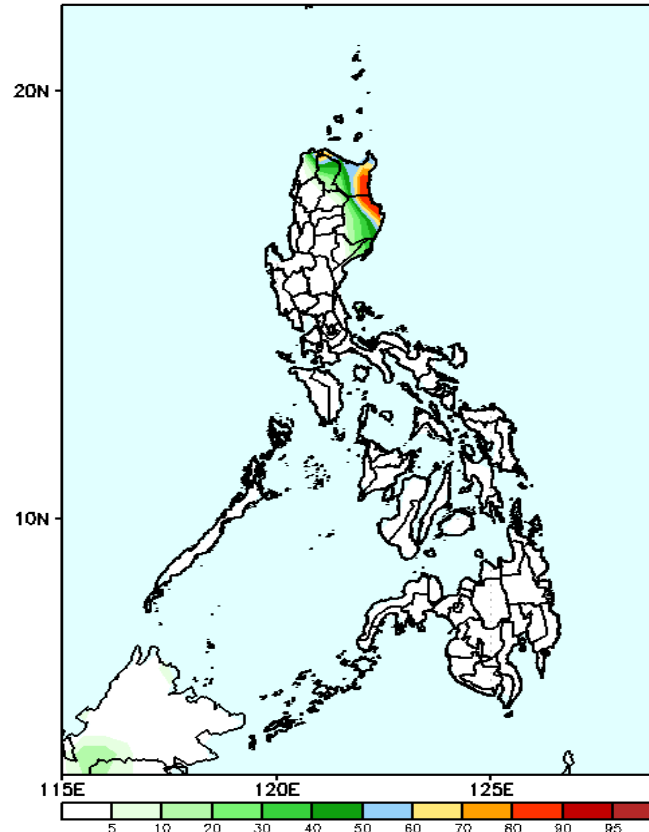
GEFS Week-1 Exceedance Prob. > 100mm
Valid: 20231220 - 20231226



Probability to Exceed 100mm

- High to very high over Apayao, and the eastern sections of Cagayan and Isabela;
- Moderate to high over Aurora;
- Low elsewhere.

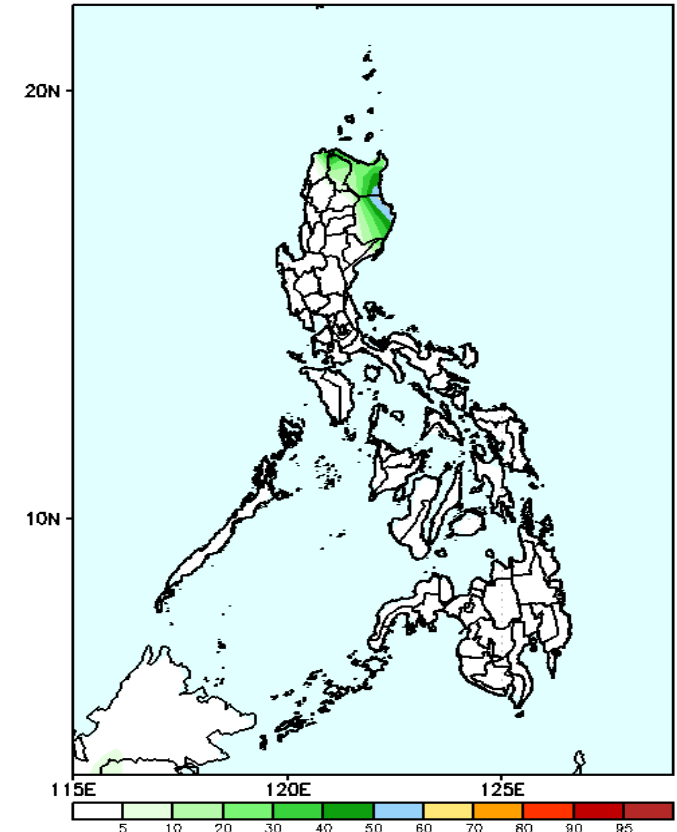
GEFS Week-1 Exceedance Prob. > 150mm
Valid: 20231220 - 20231226



Probability to Exceed 150mm

- Moderate to high over Apayao and the eastern sections of Cagayan and Isabela;
- Low elsewhere.

GEFS Week-1 Exceedance Prob. > 200mm
Valid: 20231220 - 20231226



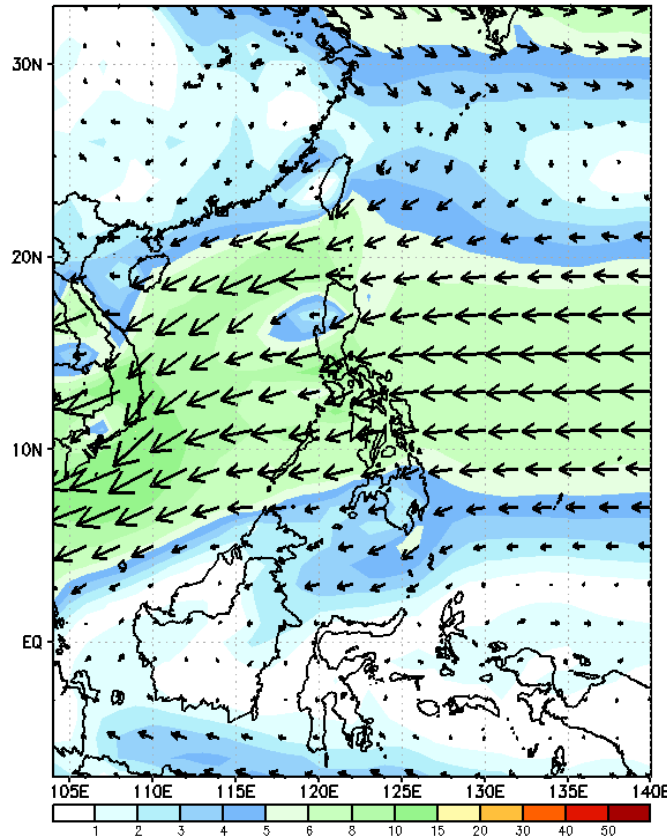
Probability to Exceed 200mm

- Moderate over the eastern sections of Cagayan and Isabela;
- Low over the rest of the country.

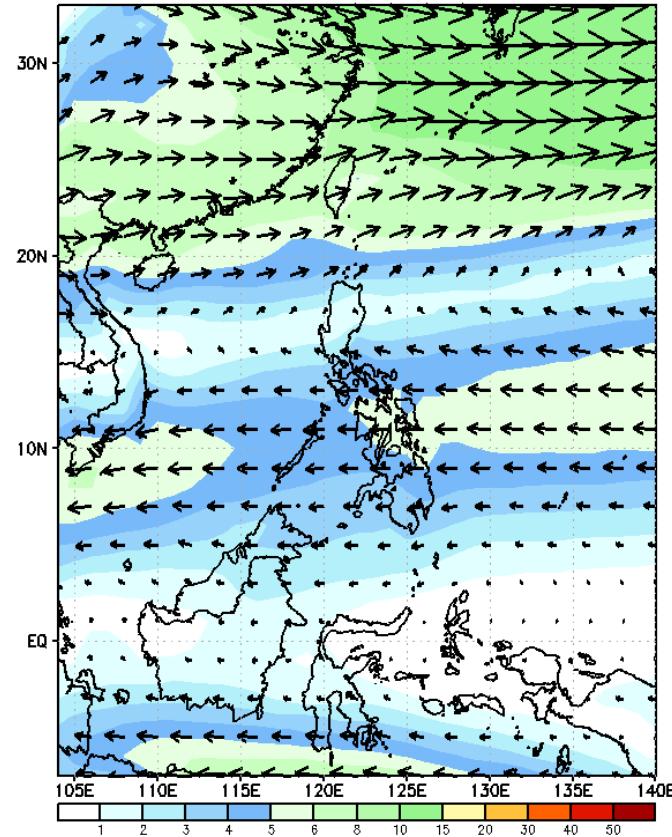
GEFS Week-2 Forecasts: Wind Forecast

Week 2: Dec 27, 2023 – Jan 02, 2024

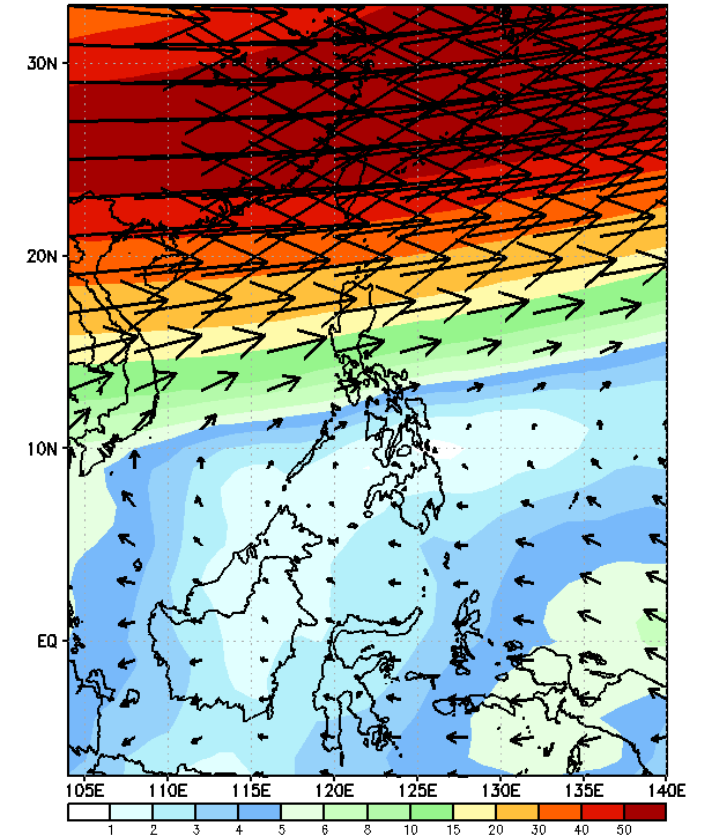
GEFS Week-2 850-hPa Wind Total
Valid: 20231227 – 20240102



GEFS Week-2 700-hPa Wind Total
Valid: 20231227 – 20240102

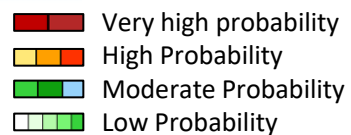


GEFS Week-2 200-hPa Wind Total
Valid: 20231227 – 20240102



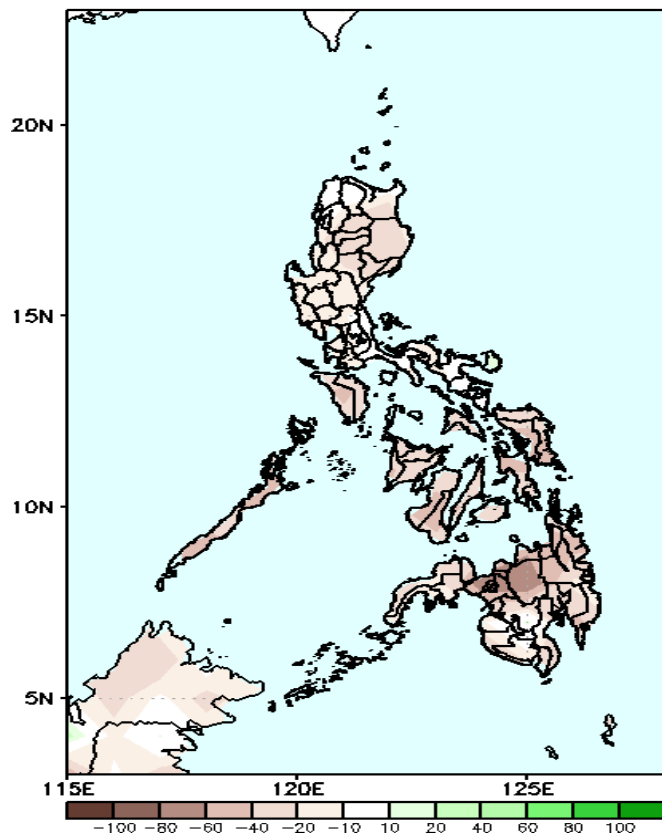
Northeast Monsoon affecting Extreme Northern Luzon; Easterlies affecting the rest of the country.

Precipitation Anomaly and Exceedance Probability > 25/50 mm



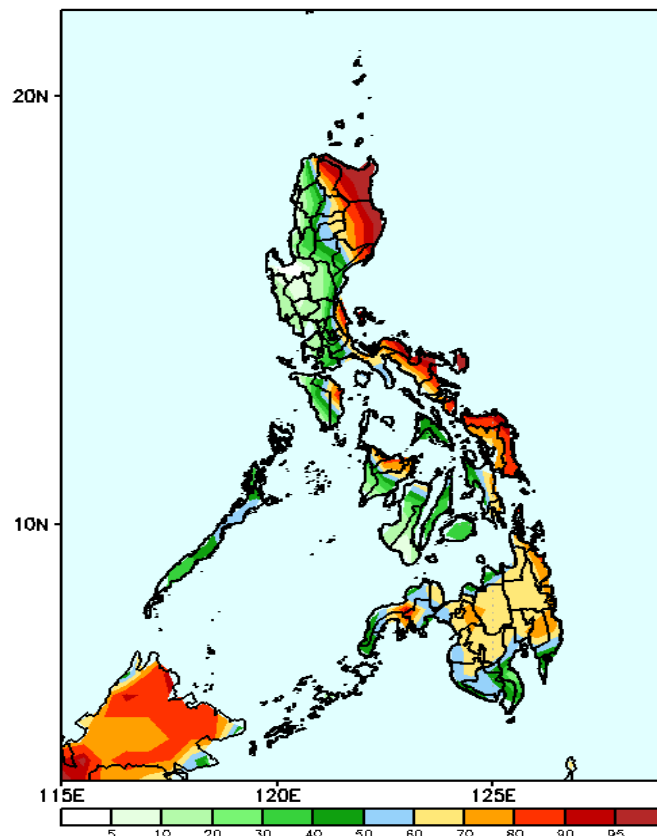
Week 2: Dec 27, 2023 – Jan 02, 2024

GEFS Week-2 Precip Anomaly
Valid: 20231227 – 20240102



Rainfall deficit of 20-60mm is expected in most parts of the country.

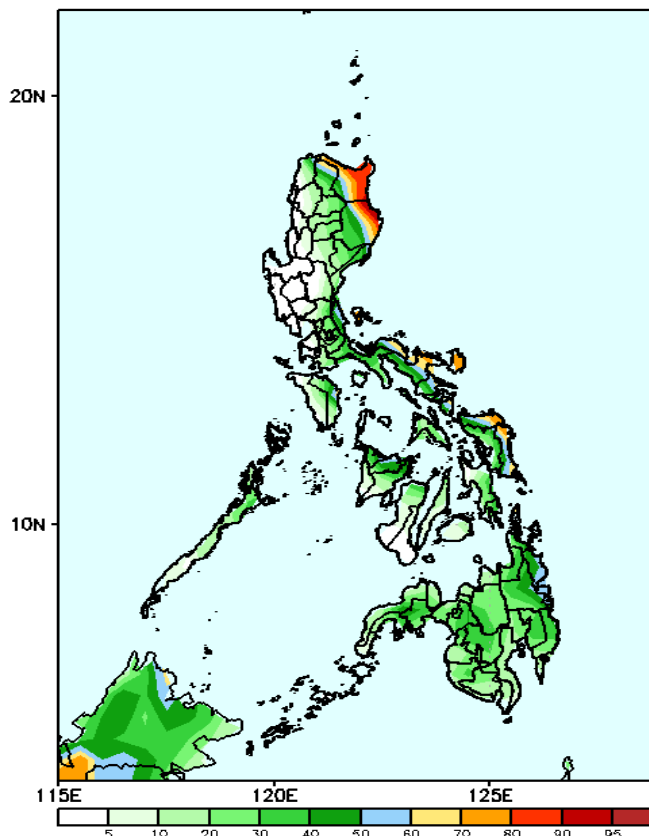
GEFS Week-2 Exceedance Prob. > 25mm
Valid: 20231227 – 20240102



Probability to Exceed 25mm

- High to very high over Apayao, and the eastern sections of Luzon and Visayas;
- Moderate to high over Mindanao, NCR, the rest of CAR, Rizal, Laguna, MIMAROPA, and the northern portion of Western Visayas;
- Low to moderate over the rest of the country.

GEFS Week-2 Exceedance Prob. > 50mm
Valid: 20231227 – 20240102



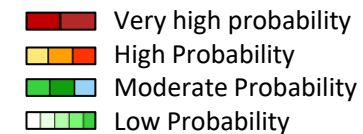
Probability to Exceed 50mm

- High to very high over the eastern sections of Cagayan and Isabela;
- Moderate to high over Apayao, the rest of Eastern Luzon, Samar Provinces, Aklan, Capiz, and Caraga;
- Low to moderate elsewhere.

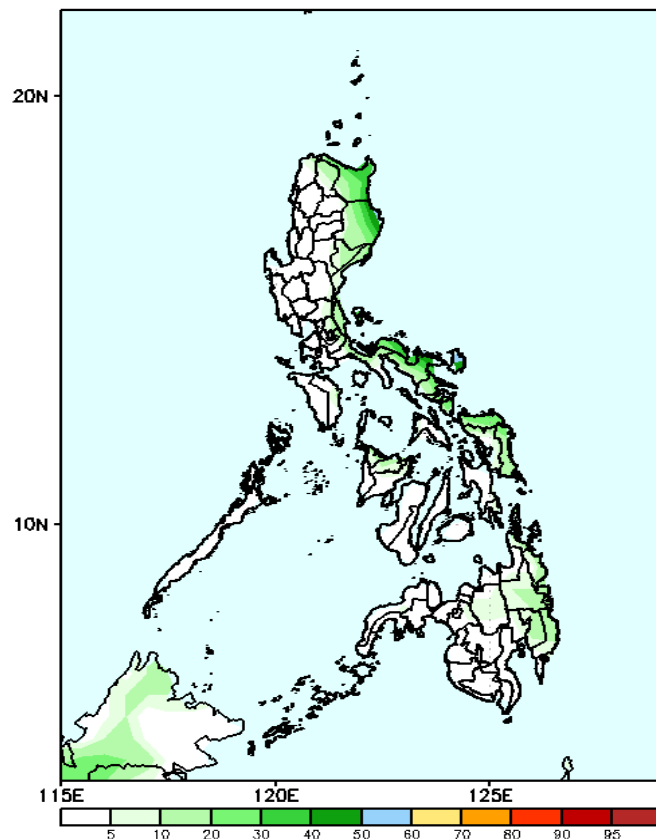


Exceedance Probability > 100/150/200 mm

Week 2: Dec 27, 2023 – Jan 02, 2024



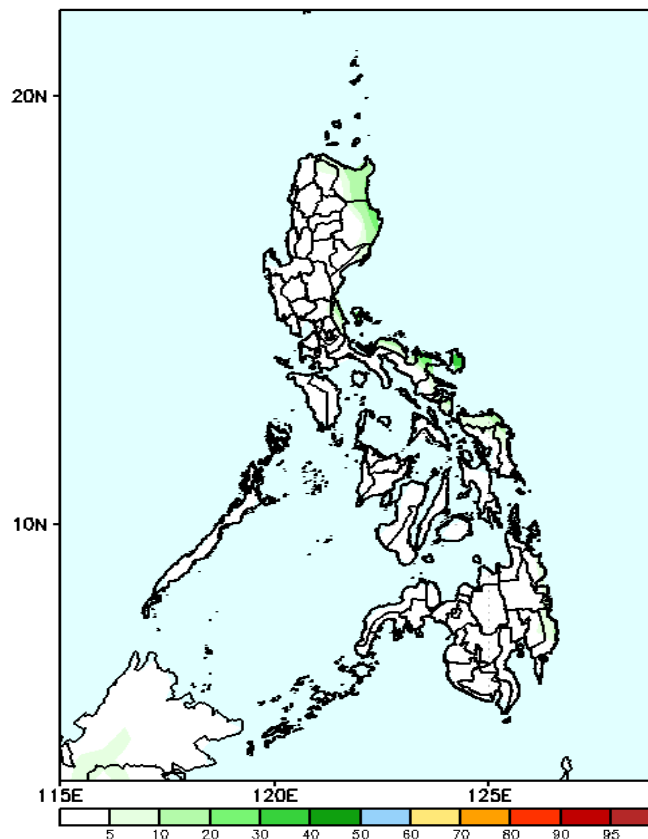
GEFS Week-2 Exceedance Prob. > 100mm
Valid: 20231227 – 20240102



Probability to Exceed 100mm

- Moderate over the eastern sections of Cagayan, Isabela, and Bicol region;
- Low over the rest of the country.

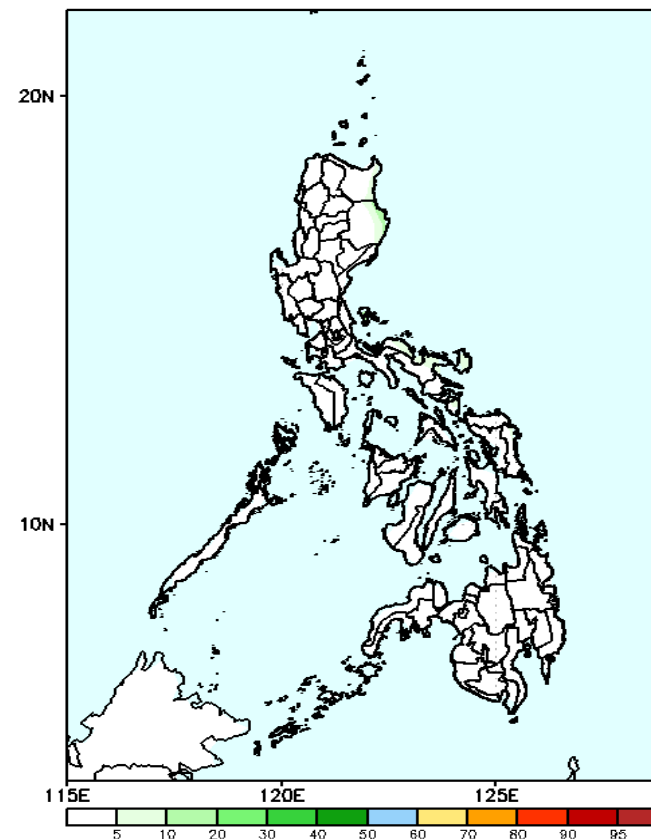
GEFS Week-2 Exceedance Prob. > 150mm
Valid: 20231227 – 20240102



Probability to Exceed 150mm

- Low in most parts of the country.

GEFS Week-2 Exceedance Prob. > 200mm
Valid: 20231227 – 20240102

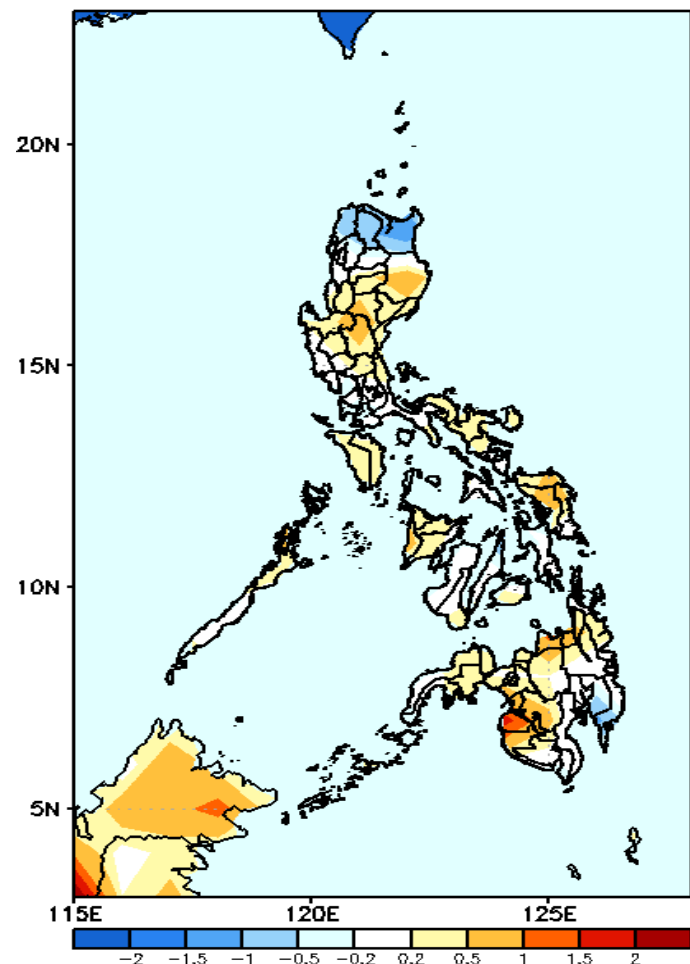


Probability to Exceed 200mm

- Low in most parts of the country.

GEFS Week-1 & 2 Forecasts: T2m Anomaly

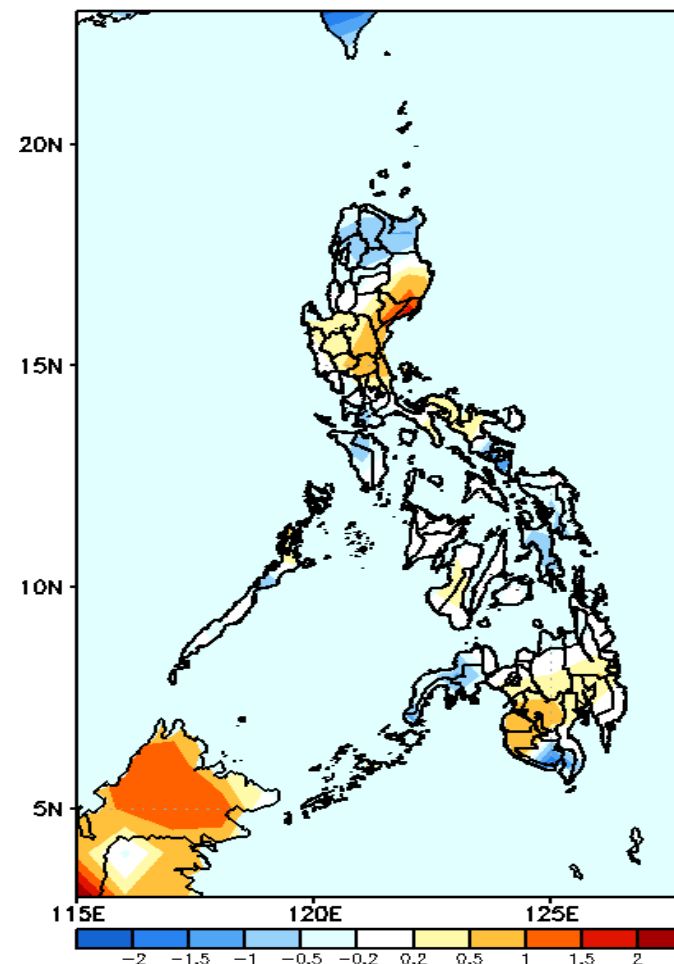
GEFS Week-1 T2m Anomaly
Valid: 20231220 – 20231226



2m Temperature Week 1: Dec 20-26, 2023

Near average to warmer than average surface air temperature will likely be experienced in most parts of the country except in Ilocos Norte, Apayao, Cagayan, and Davao region where slightly cooler than average surface air temperature is expected.

GEFS Week-2 T2m Anomaly
Valid: 20231227 – 20240102



2m Temperature Week 2: Dec 27, 2023 – Jan 02, 2024

Near average to warmer than average surface air temperature will likely be experienced in most parts of the country except in Ilocos Norte, Apayao, Kalinga, Abra, Albay, Sorsogon, MIMAROPA, Eastern Visayas, South Cotabato and Zamboanga Peninsula where slightly cooler to cooler than average surface air temperature is expected.