



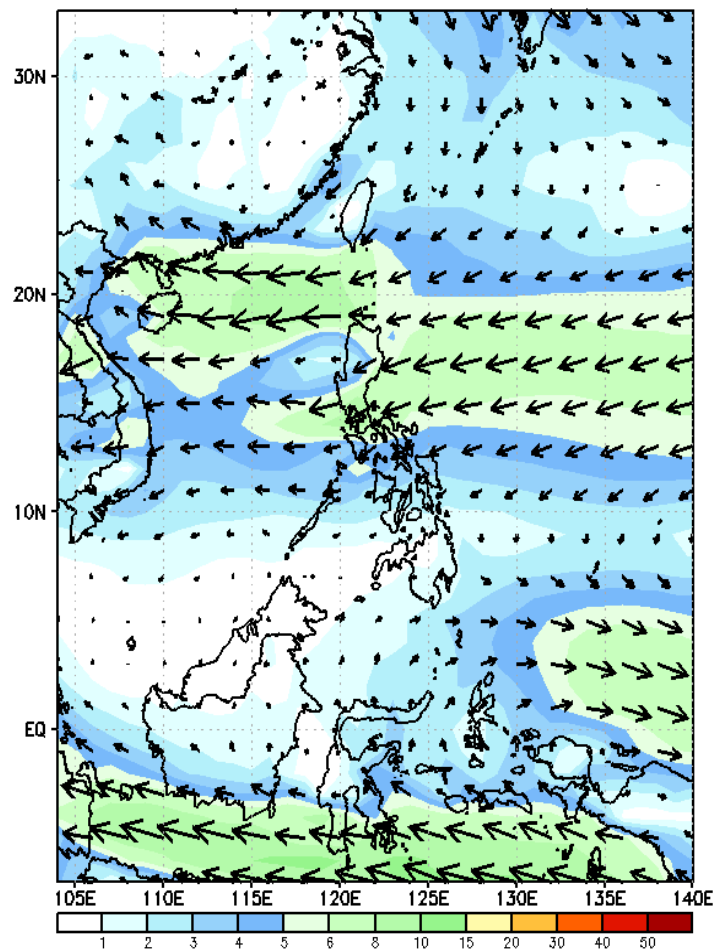
# Week 1 & Week 2 Forecast for the Philippines using GEFS Model



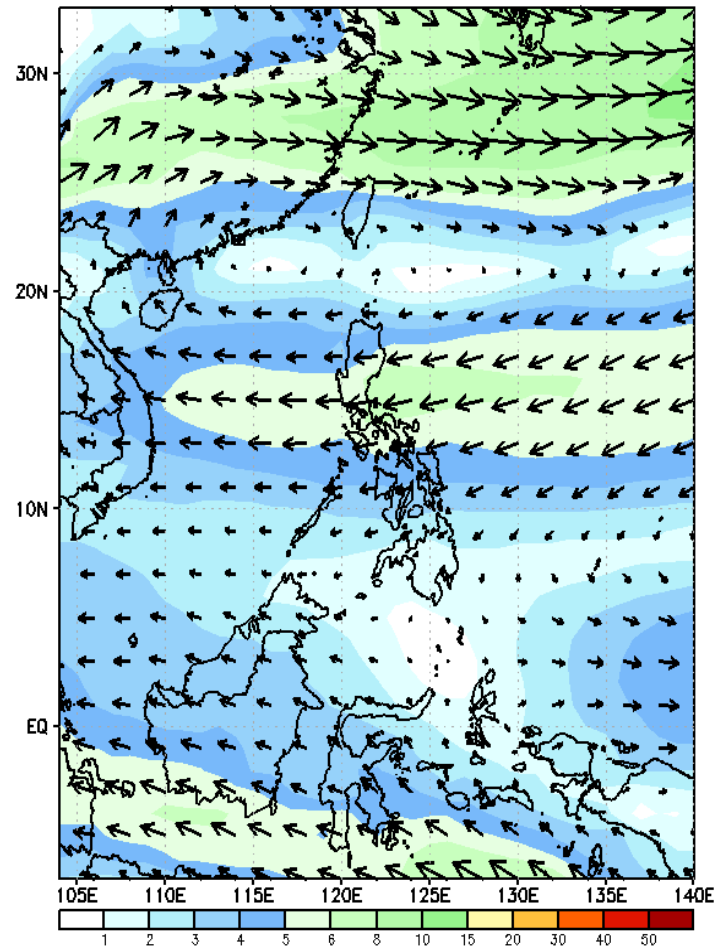
# GEFS Week-1 Forecasts: Wind Forecast

Week 1: Oct 20-26, 2023

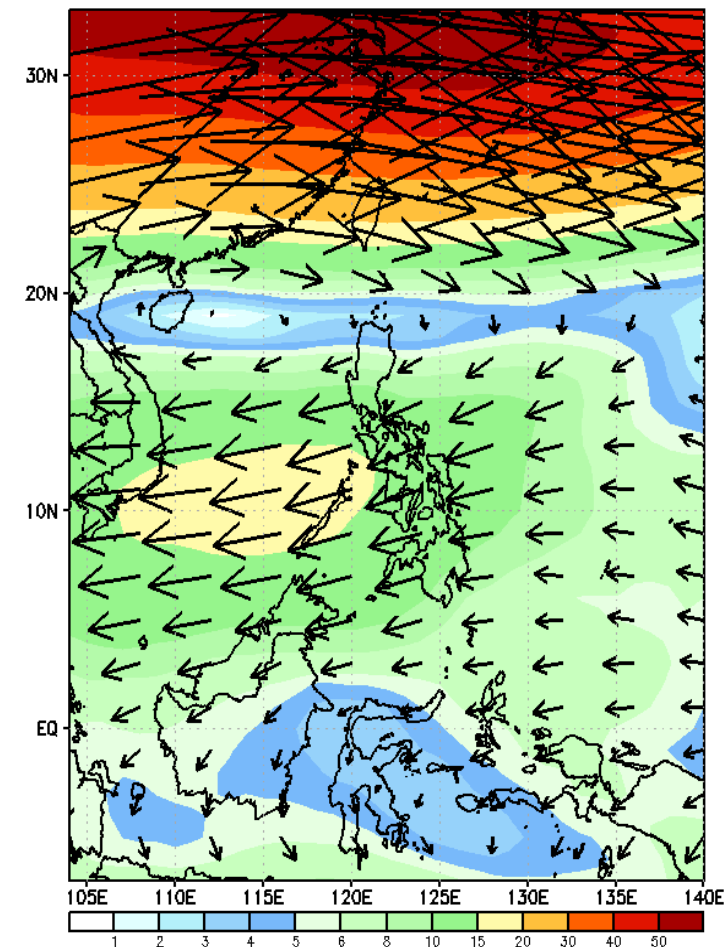
GEFS Week-1 850-hPa Wind Total  
Valid: 20231020 - 20231026



GEFS Week-1 700-hPa Wind Total  
Valid: 20231020 - 20231026



GEFS Week-1 200-hPa Wind Total  
Valid: 20231020 - 20231026



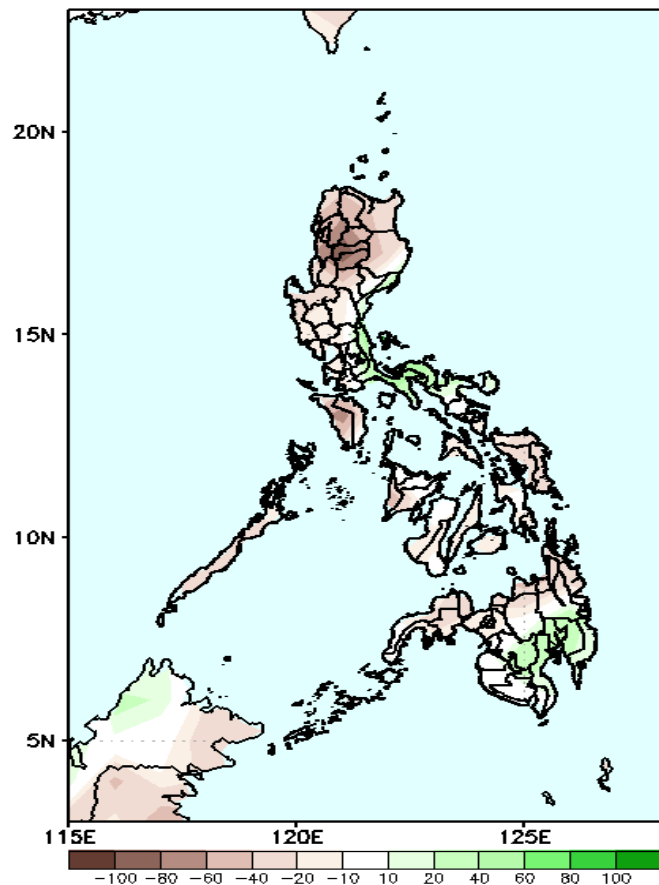
Easterlies affecting most parts of the country .

# Precipitation Anomaly and Exceedance Probability > 25/50 mm



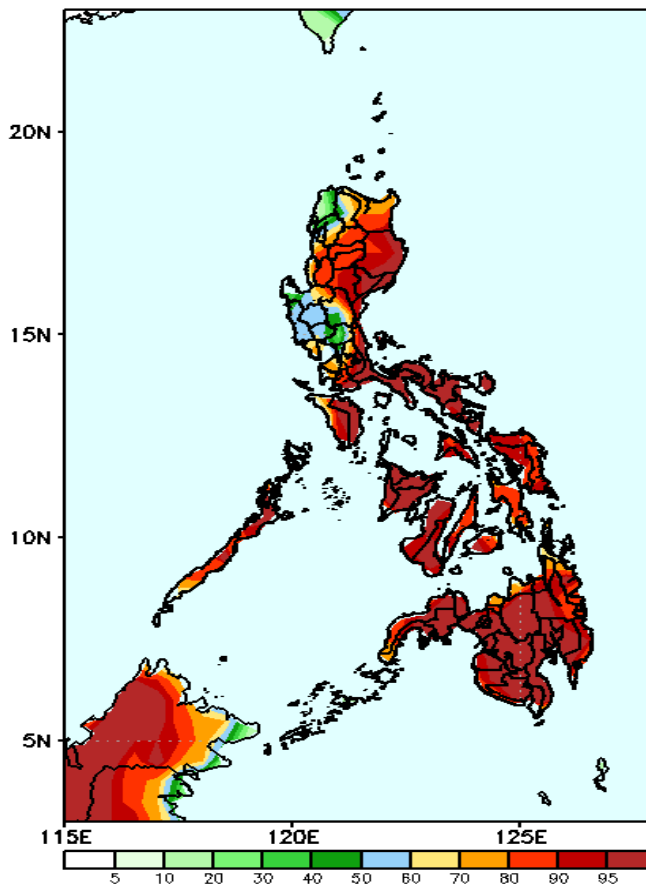
Week 1: Oct 20-26, 2023

GEFS Week-1 Precip Anomaly  
Valid: 20231020 - 20231026



Rainfall deficit of 40-80mm is expected in most parts of the country except in Camarines Norte, Quezon, Davao Region, and North Cotabato where there is 40-60mm increase of rainfall.

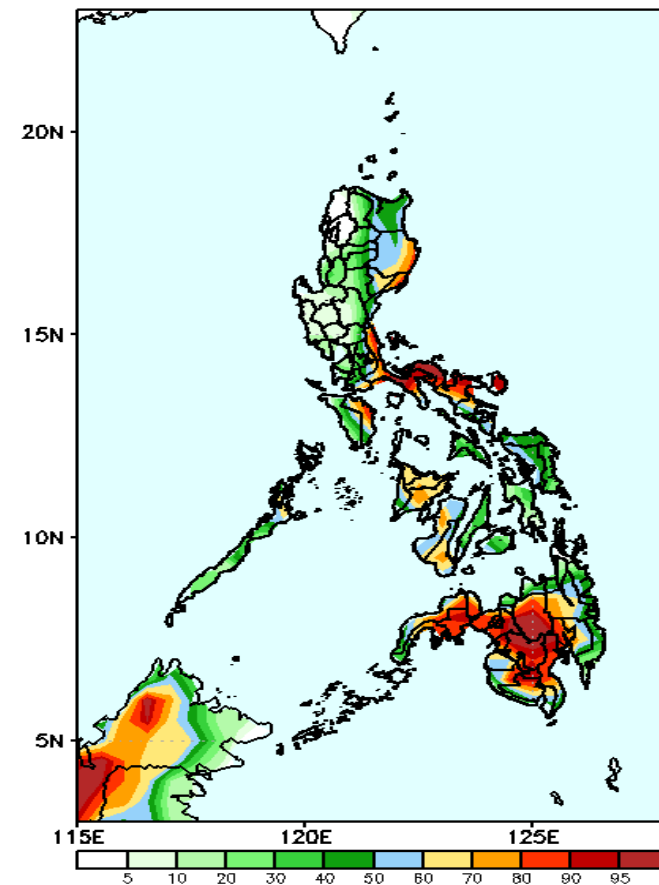
GEFS Week-1 Exceedance Prob. > 25mm  
Valid: 20231020 - 20231026



## Probability to Exceed 25mm

- High to very high in most parts of the country.
- Moderate to high over the western section of Central Luzon and Ilocos Region.

GEFS Week-1 Exceedance Prob. > 50mm  
Valid: 20231020 - 20231026



## Probability to Exceed 50mm

- Moderate to high over the eastern section of Luzon, Western Visayas, Samar Provinces, and most of Mindanao;
- Low to moderate over the rest of the country.

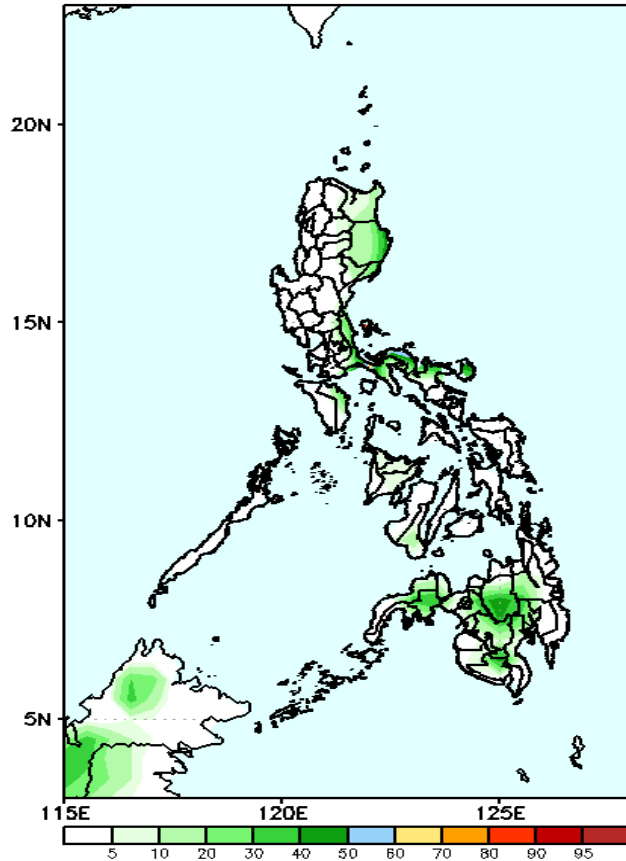


# Exceedance Probability > 100/150/200 mm

Week 1: Oct 20-26, 2023

Very high probability  
High Probability  
Moderate Probability  
Low Probability

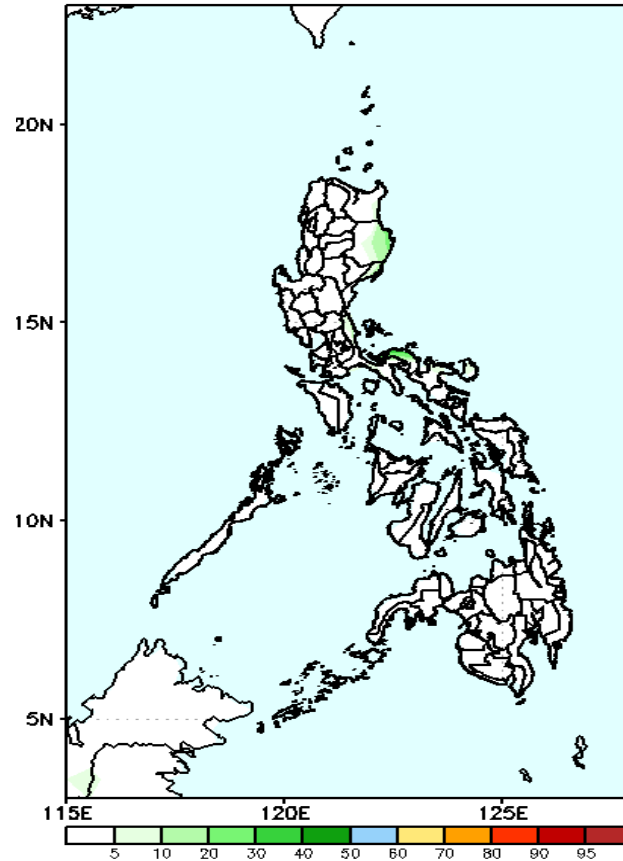
GEFS Week-1 Exceedance Prob. > 100mm  
Valid: 20231020 - 20231026



**Probability to Exceed 100mm**

- Low in most parts of the country.

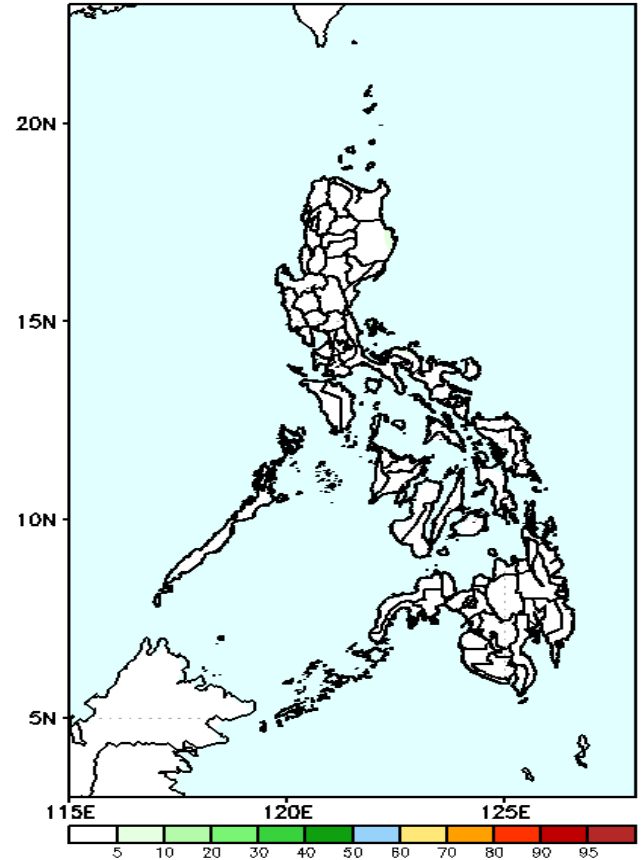
GEFS Week-1 Exceedance Prob. > 150mm  
Valid: 20231020 - 20231026



**Probability to Exceed 150mm**

- Low in most parts of the country.

GEFS Week-1 Exceedance Prob. > 200mm  
Valid: 20231020 - 20231026



**Probability to Exceed 200mm**

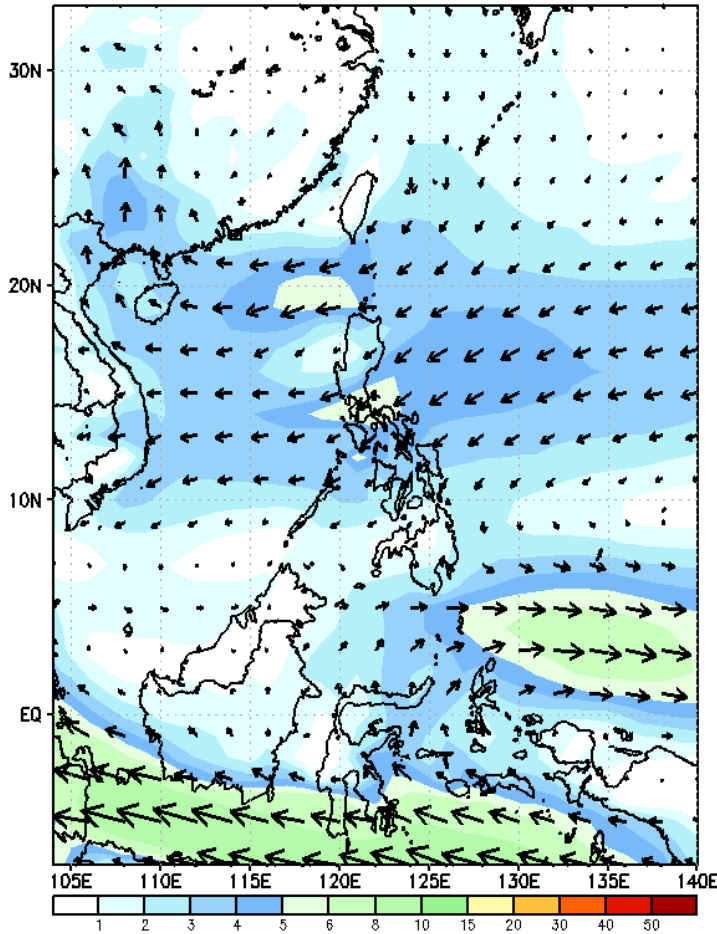
- Low in most parts of the country.



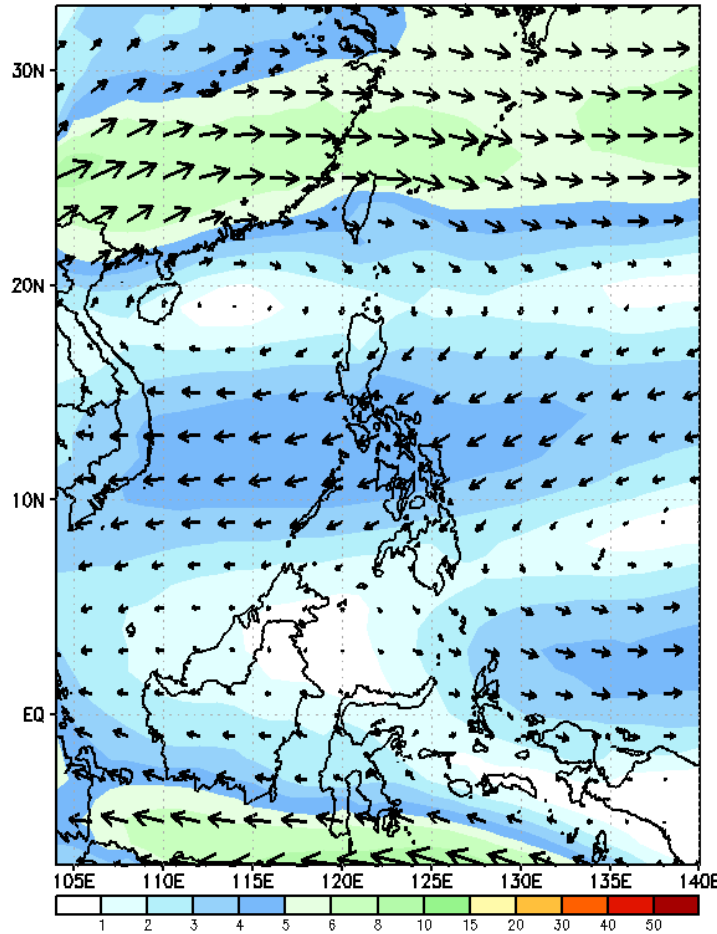
# GEFS Week-2 Forecasts: Wind Forecast

Week 2: Oct 27- Nov 02, 2023

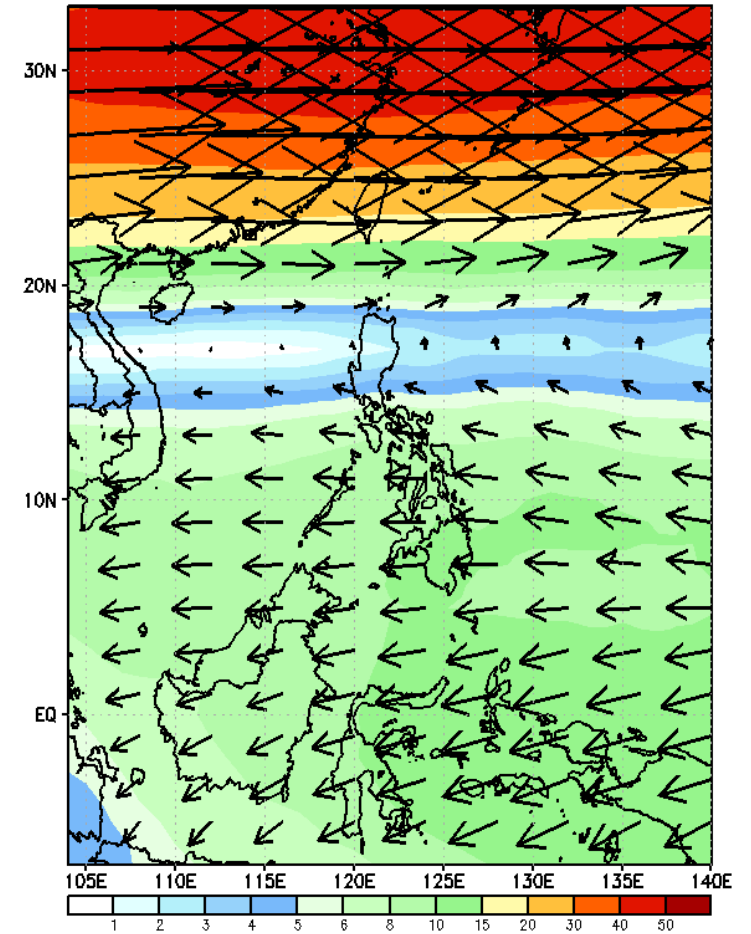
GEFS Week-2 850-hPa Wind Total  
Valid: 20231027 - 20231102



GEFS Week-2 700-hPa Wind Total  
Valid: 20231027 - 20231102

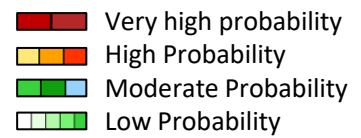


GEFS Week-2 200-hPa Wind Total  
Valid: 20231027 - 20231102



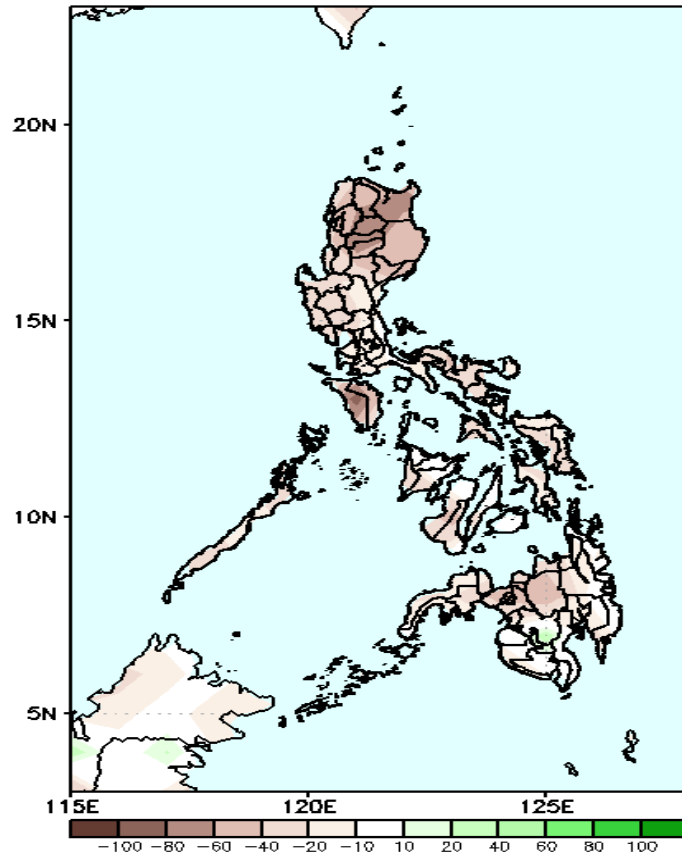
Easterlies is forecasted to persist and affect most parts of the country.

# Precipitation Anomaly and Exceedance Probability > 25/50 mm



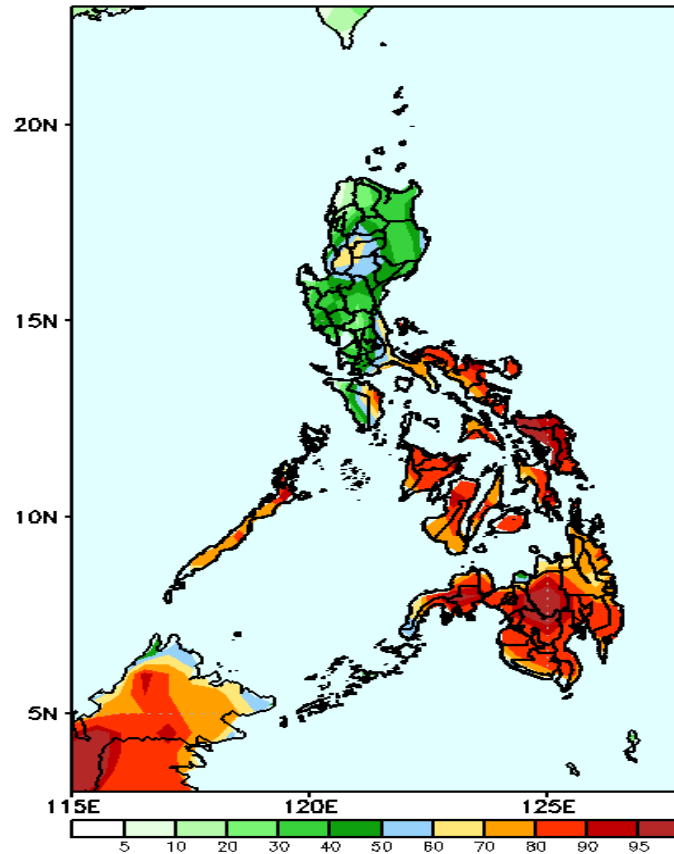
Week 2: Oct 27- Nov 02, 2023

GEFS Week-2 Precip Anomaly  
Valid: 20231027 - 20231102



Rainfall deficit of 20-80mm will be likely in most parts of the country.

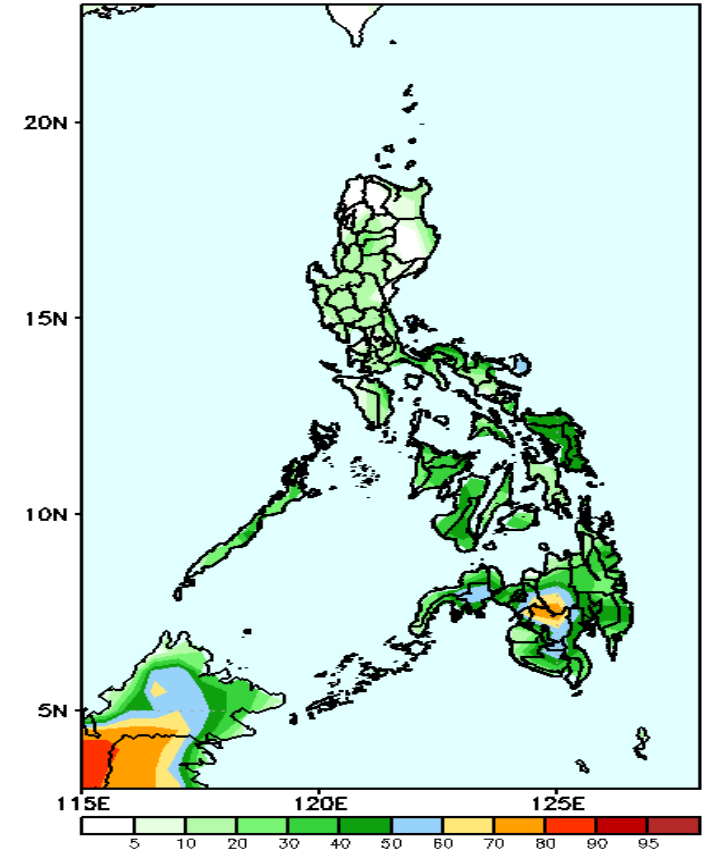
GEFS Week-2 Exceedance Prob. > 25mm  
Valid: 20231027 - 20231102



## Probability to Exceed 25mm

- High to very high over Palawan, Bicol Region, Visayas, and most of Mindanao;
- Moderate to high over Cagayan Valley, CAR, NCR, and the rest of Southern Luzon;
- Low to moderate over the Ilocos Region and Central Luzon.

GEFS Week-2 Exceedance Prob. > 50mm  
Valid: 20231027 - 20231102

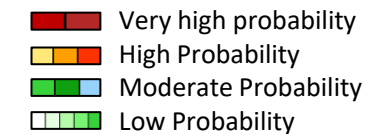


## Probability to Exceed 50mm

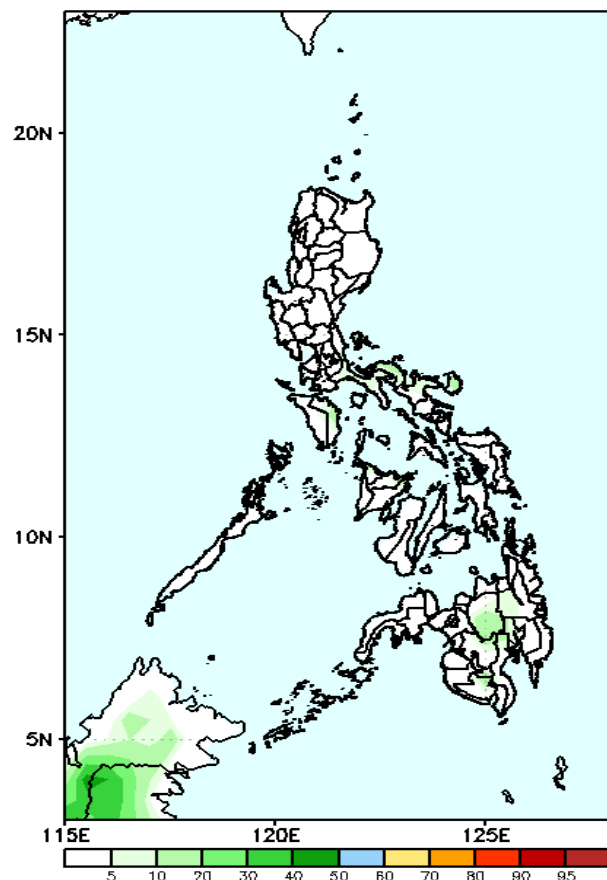
- Moderate to high in Bukidnon, Lanao provinces, Cotabato Provinces, and Zamboanga del Sur;
- Low to moderate over the rest of the country.

# Exceedance Probability > 100/150/200 mm

Week 2: Oct 27- Nov 02, 2023



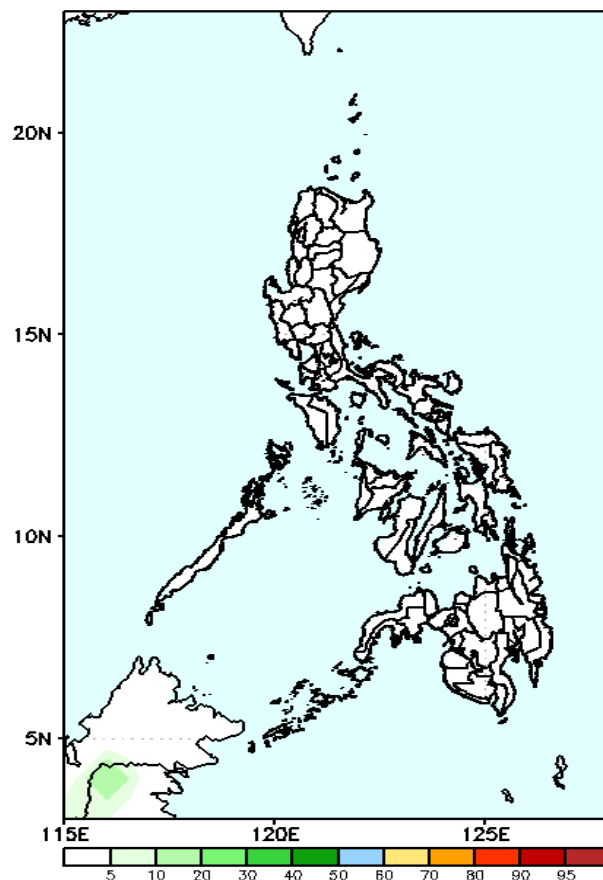
GEFS Week-2 Exceedance Prob. > 100mm  
Valid: 20231027 - 20231102



Probability to Exceed 100mm

- Low in most parts of the country.

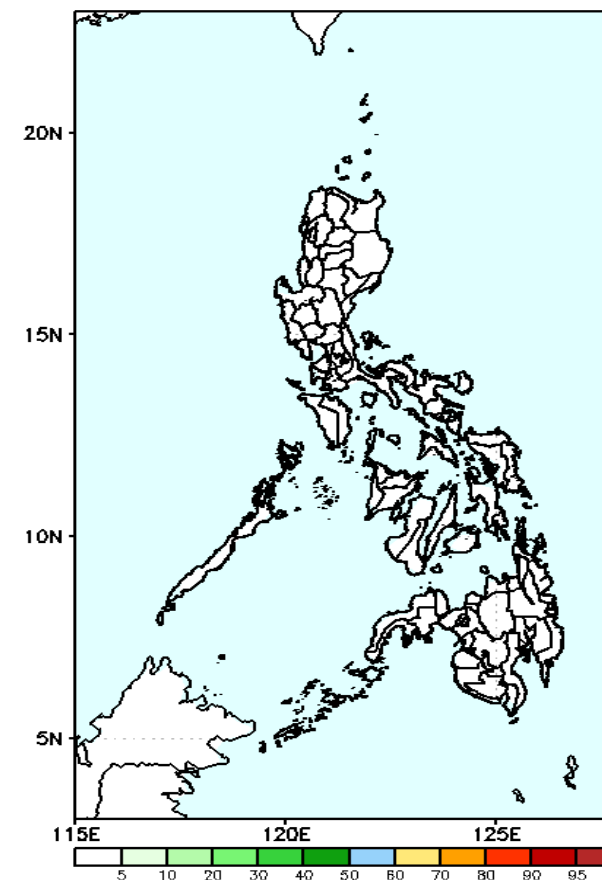
GEFS Week-2 Exceedance Prob. > 150mm  
Valid: 20231027 - 20231102



Probability to Exceed 150mm

- Low in most parts of the country.

GEFS Week-2 Exceedance Prob. > 200mm  
Valid: 20231027 - 20231102

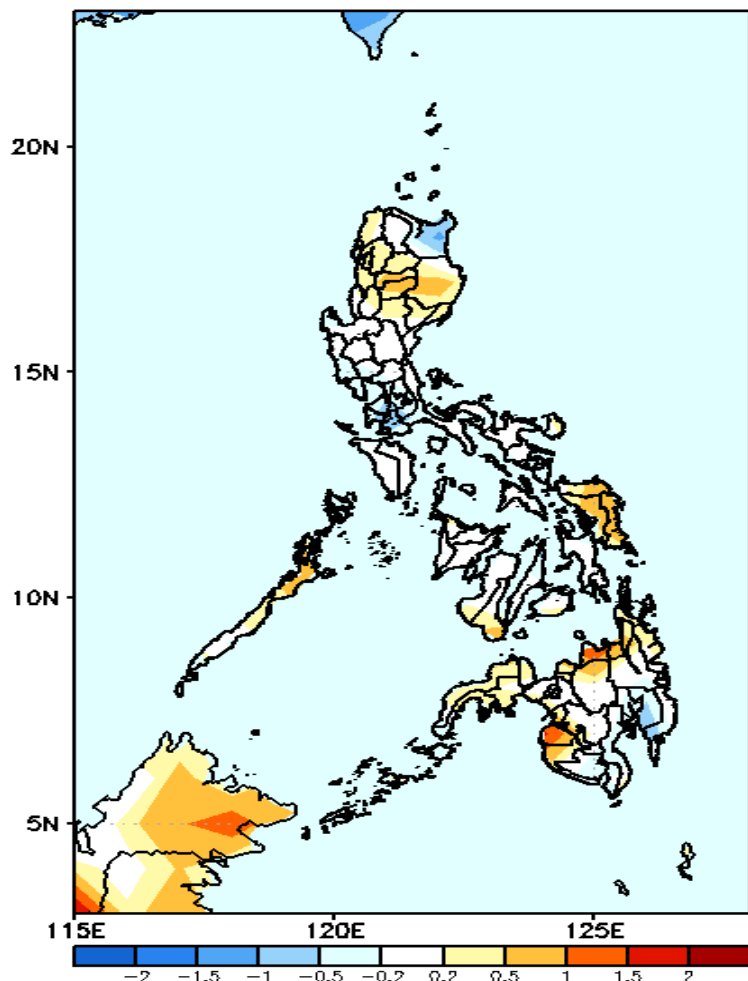


Probability to Exceed 200mm

- Low in most parts of the country.

# GEFS Week-1 & 2 Forecasts: T2m Anomaly

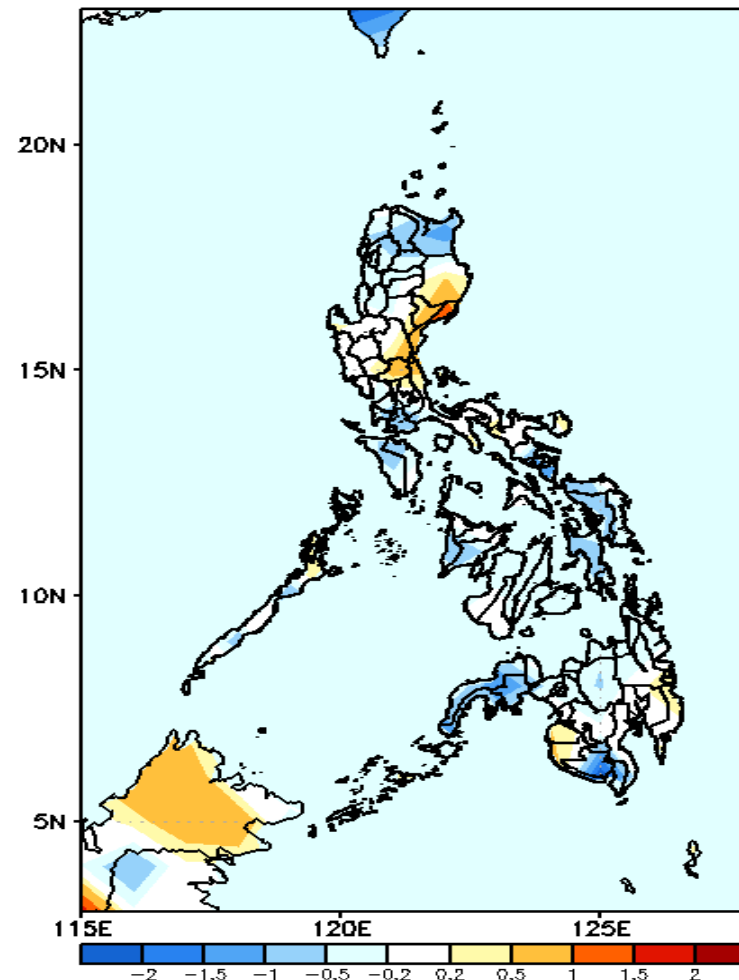
GEFS Week-1 T2m Anomaly  
Valid: 20231020 - 20231026



## 2m Temperature Week 1: Oct 20-26, 2023

Average to warmer than average surface air temperature will likely experience in most parts of the country except in Cagayan and Davao Region where slightly cooler temperature is expected.

GEFS Week-2 T2m Anomaly  
Valid: 20231027 - 20231102



## 2m Temperature Week 2: Oct 27- Nov 02, 2023

Average to cooler than average surface air temperature will likely experience in most parts of the country except in some areas in eastern Luzon where slightly warmer to warmer temperature is expected.