



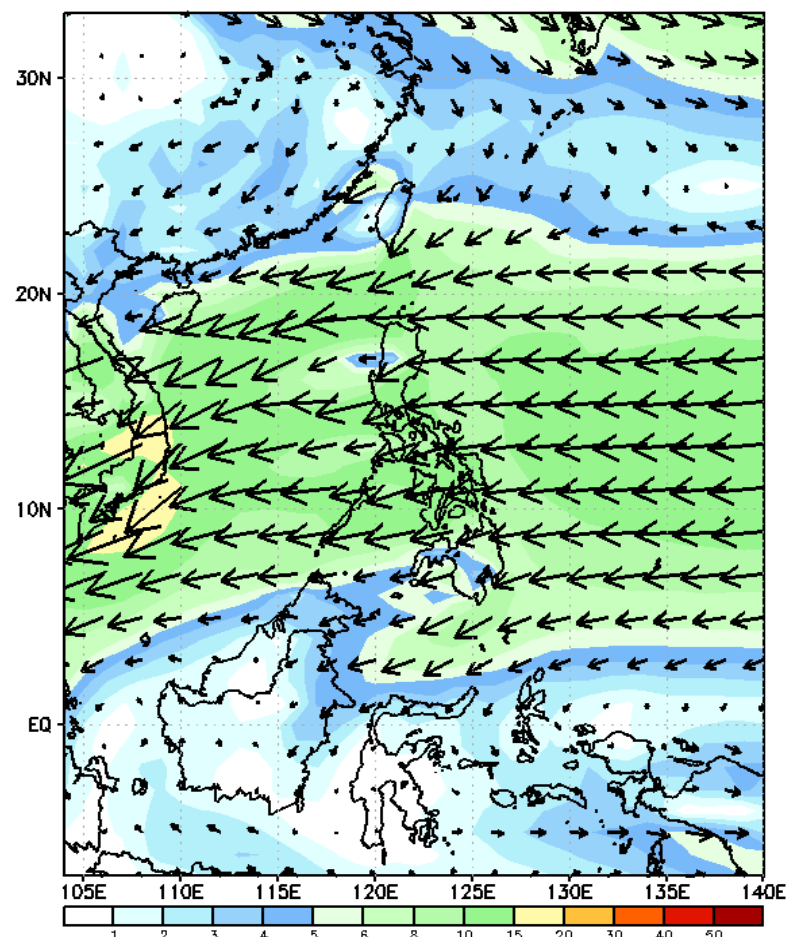
Week 1 & Week 2 Forecast for the Philippines using GEFS Model



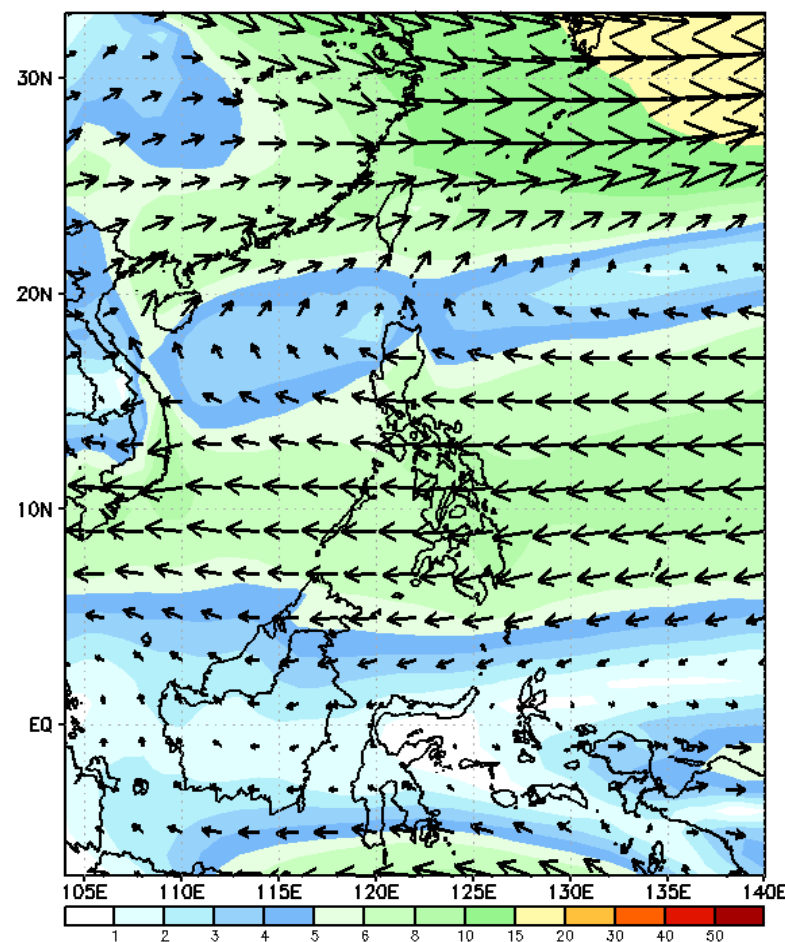
GEFS Week-1 Forecasts: Wind Forecast

Week 1: Dec 22-28, 2023

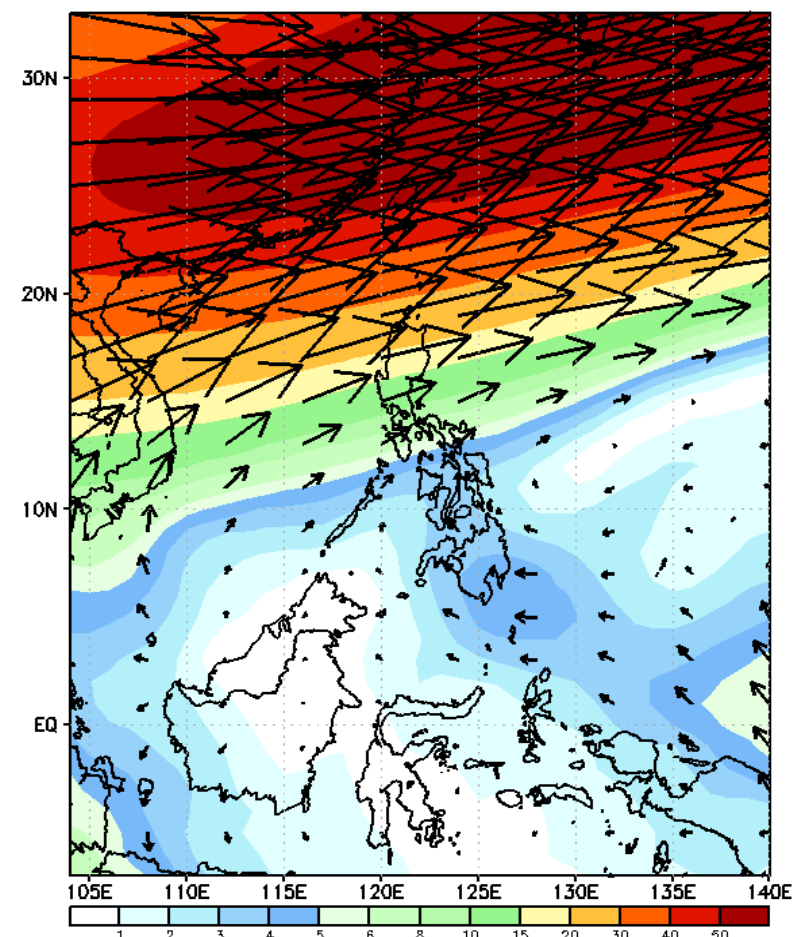
GEFS Week-1 850-hPa Wind Total
Valid: 20231222 - 20231228



GEFS Week-1 700-hPa Wind Total
Valid: 20231222 - 20231228



GEFS Week-1 200-hPa Wind Total
Valid: 20231222 - 20231228



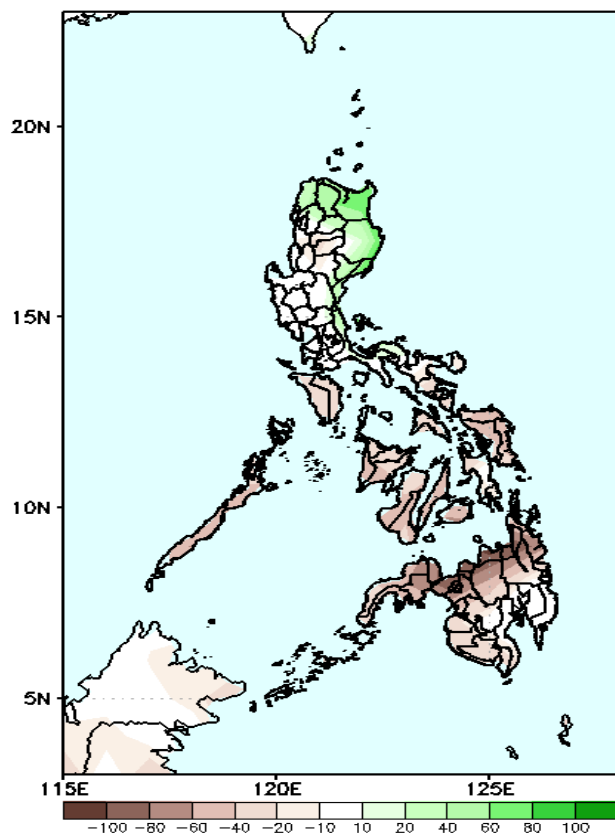
Northeast Monsoon affecting Northern Luzon; Easterlies affecting the rest of the country.

Precipitation Anomaly and Exceedance Probability > 25/50 mm



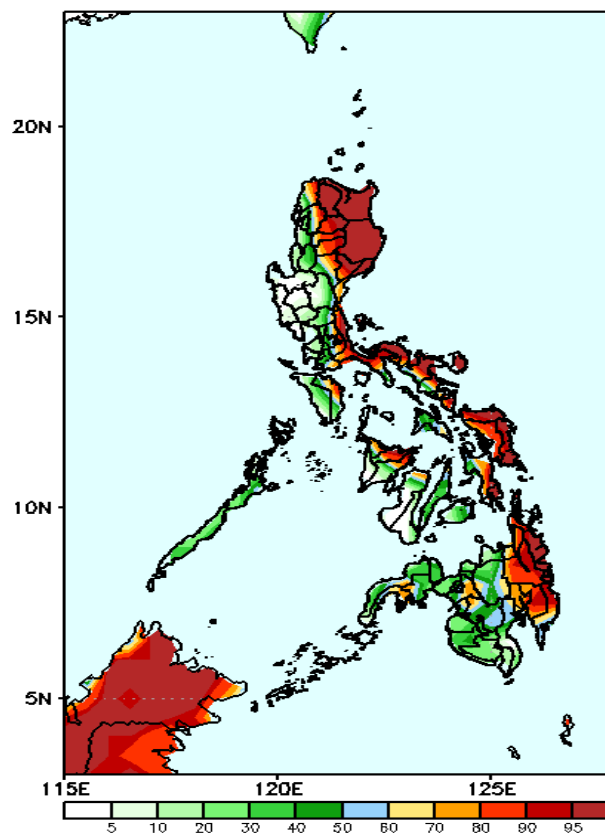
Week 1: Dec 22-28, 2023

GEFS Week-1 Precip Anomaly
Valid: 20231222 - 20231228



Rainfall deficit of 40-100mm in most parts of the country except in Ilocos Norte, Apayao, Kalinga, and most of Cagayan Valley where 40-60mm increase of rainfall is expected.

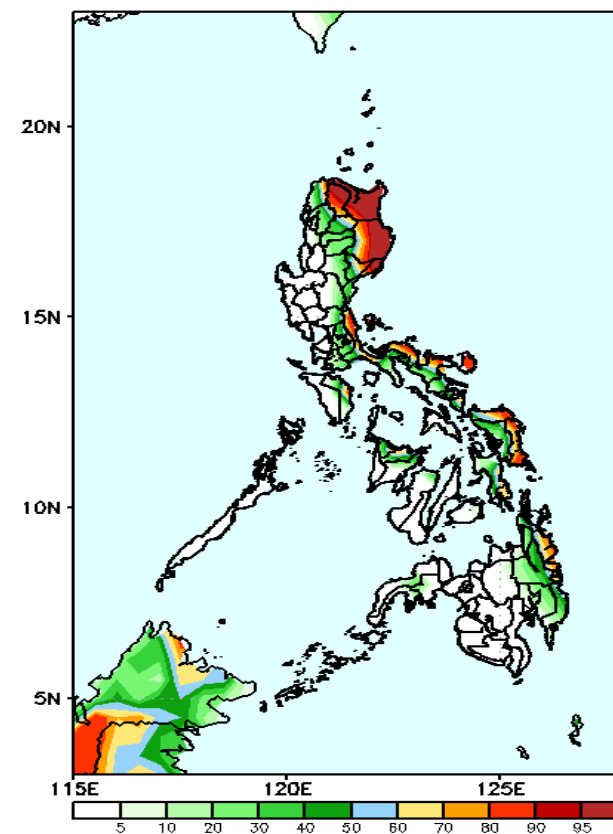
GEFS Week-1 Exceedance Prob. > 25mm
Valid: 20231222 - 20231228



Probability to Exceed 25mm

- High to very high over CAR and the eastern section of the country;
- Moderate to high over NCR, Rizal, Laguna, Oriental Mindoro, the northern portion of Western Visayas, and Western Mindanao;
- Low to moderate over the rest of the country.

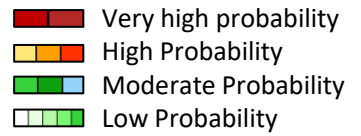
GEFS Week-1 Exceedance Prob. > 50mm
Valid: 20231222 - 20231228



Probability to Exceed 50mm

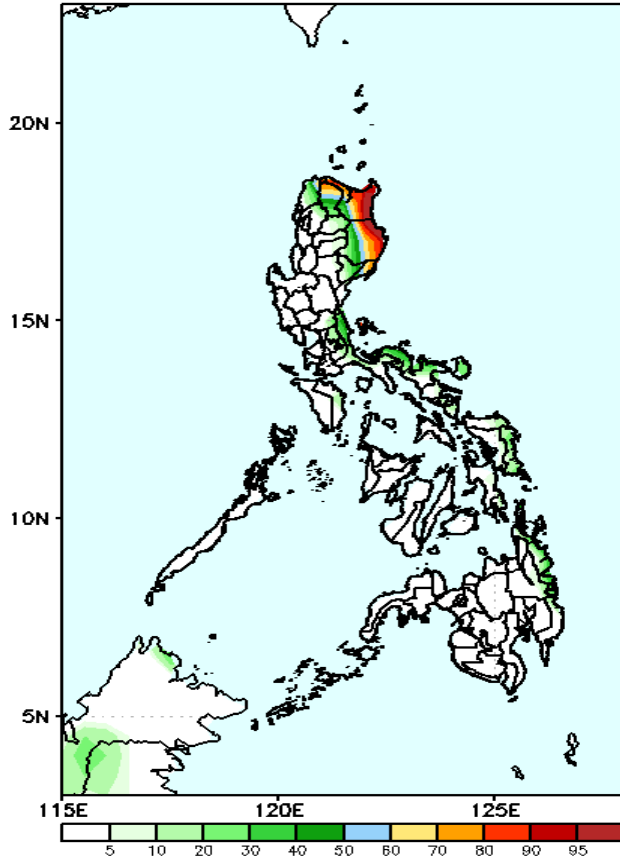
- High to very high over Apayao, Cagayan, Isabela, and the eastern sections of Bicol Region;
- Moderate to high over Kalinga, Aurora, Quezon, Capiz, Samar provinces, and Surigao provinces;
- Low to moderate over the rest of the country.

Exceedance Probability > 100/150/200 mm



Week 1: Dec 22-28, 2023

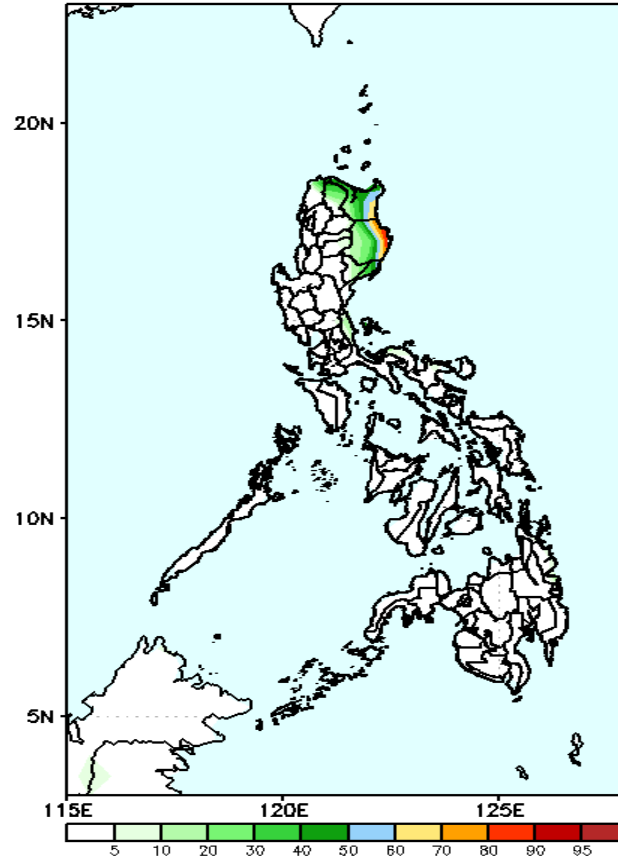
GEFS Week-1 Exceedance Prob. > 100mm
Valid: 20231222 - 20231228



Probability to Exceed 100mm

- High to very high over Cagayan and the eastern section of Isabela;
- Moderate to high over Apayao and northern Aurora;
- Low elsewhere.

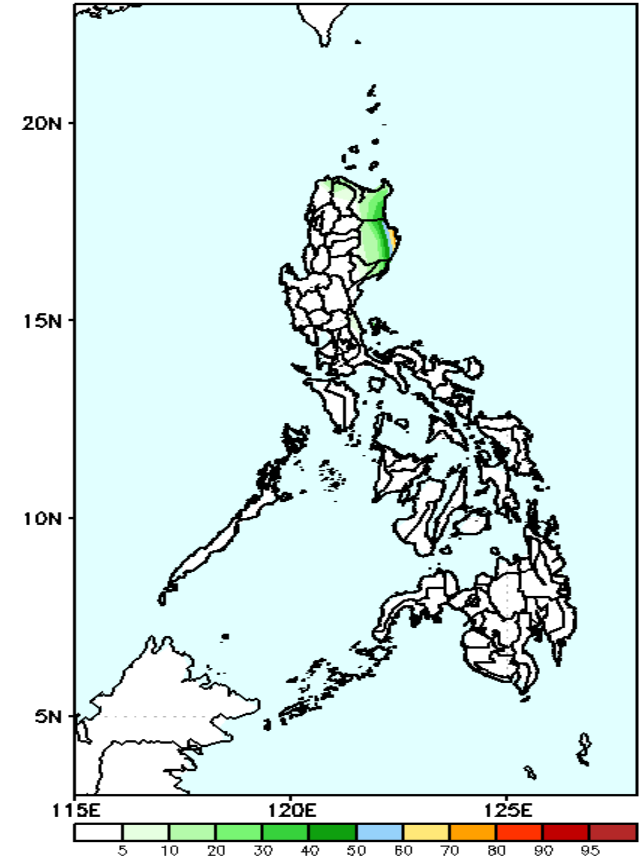
GEFS Week-1 Exceedance Prob. > 150mm
Valid: 20231222 - 20231228



Probability to Exceed 150mm

- Moderate to high over the eastern sections of Cagayan and Isabela;
- Low elsewhere.

GEFS Week-1 Exceedance Prob. > 200mm
Valid: 20231222 - 20231228



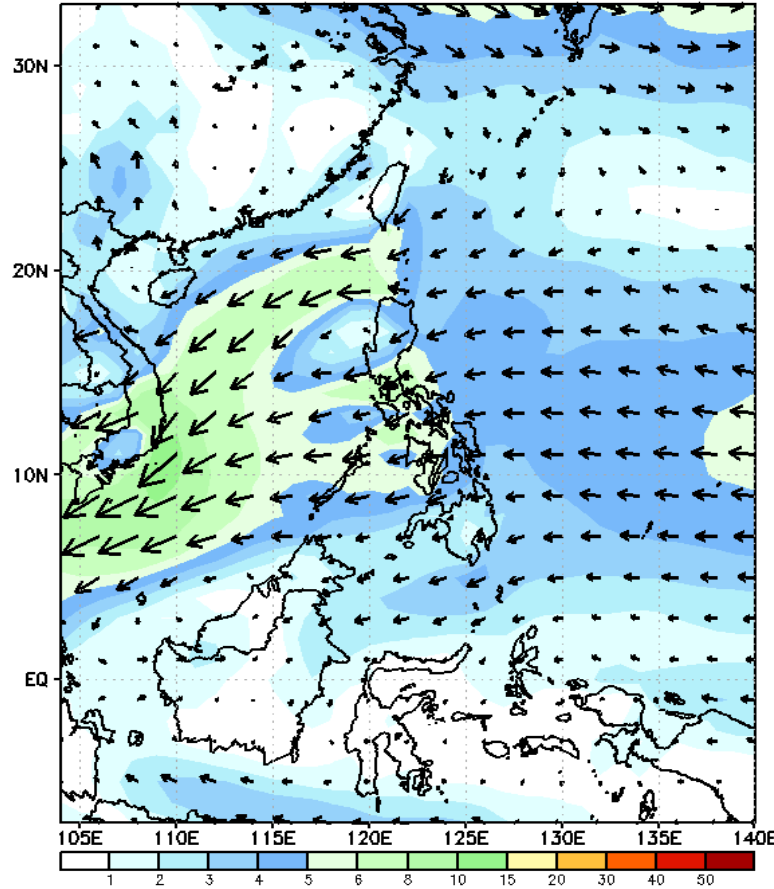
Probability to Exceed 200mm

- Moderate to high over the eastern section of Isabela;
- Low over the rest of the country.

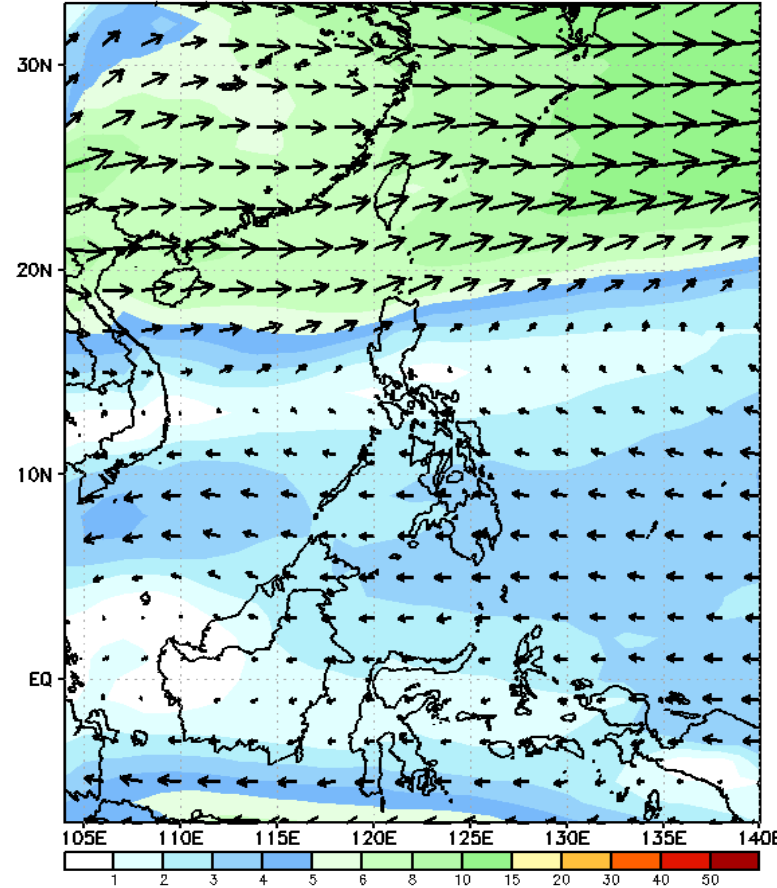
GEFS Week-2 Forecasts: Wind Forecast

Week 2: Dec 27, 2023 – Jan 02, 2024

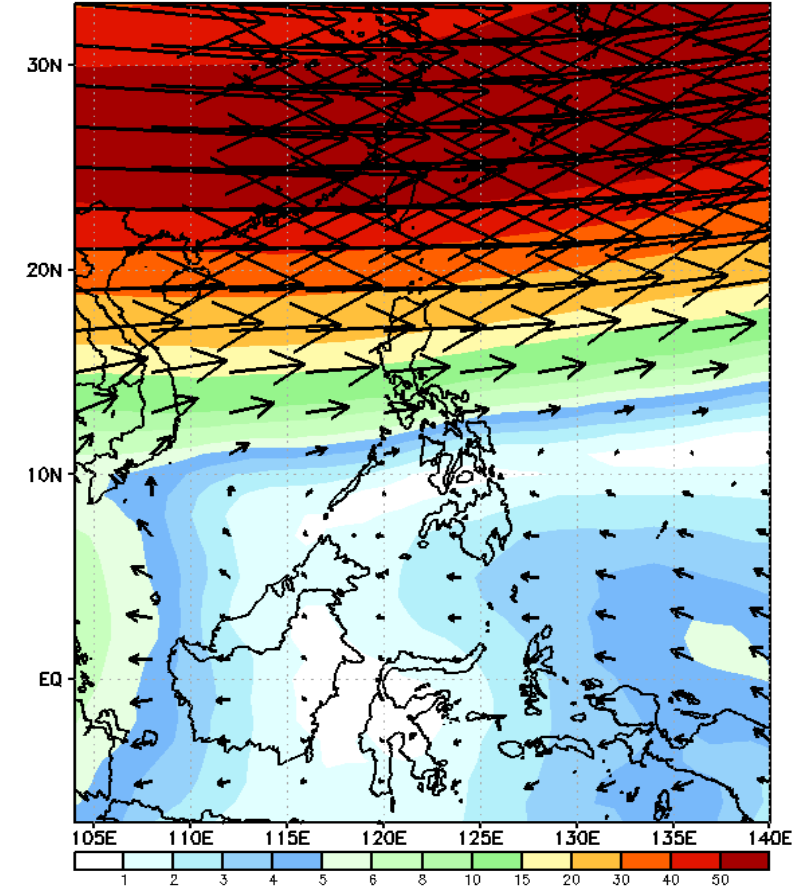
GEFS Week-2 850-hPa Wind Total
Valid: 20231229 – 20240104



GEFS Week-2 700-hPa Wind Total
Valid: 20231229 – 20240104

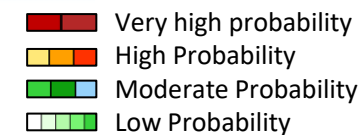


GEFS Week-2 200-hPa Wind Total
Valid: 20231229 – 20240104



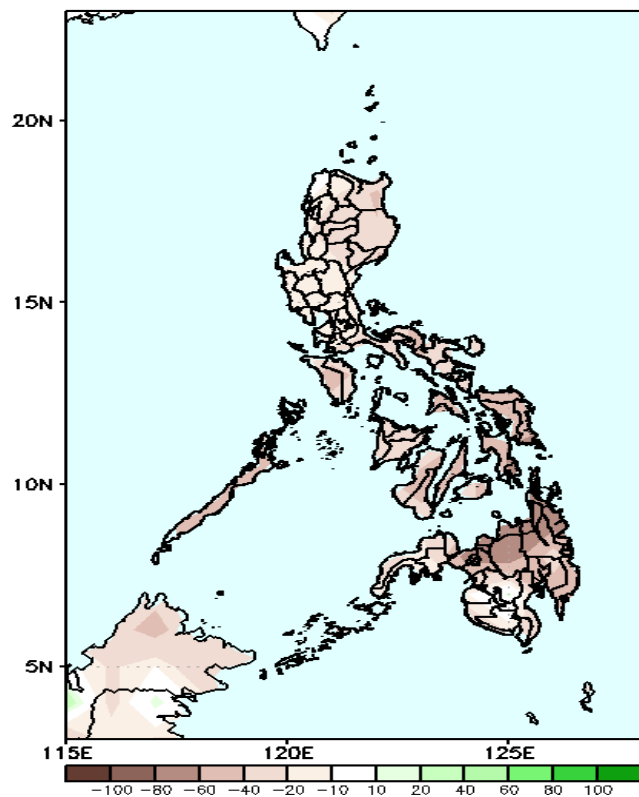
Northeast Monsoon affecting Extreme Northern Luzon; Easterlies affecting the rest of the country.

Precipitation Anomaly and Exceedance Probability > 25/50 mm



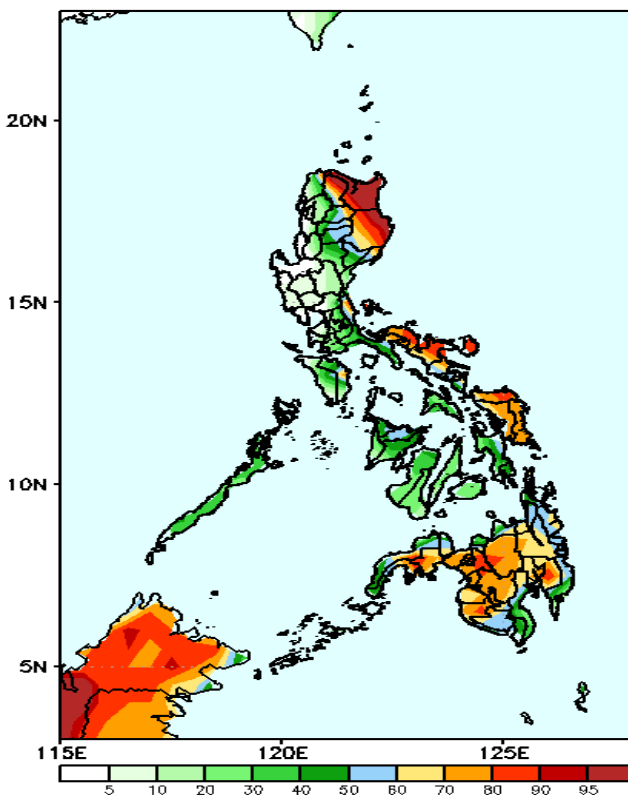
Week 2: Dec 27, 2023 – Jan 02, 2024

GEFS Week-2 Precip. Anomaly
Valid: 20231229 – 20240104



Rainfall deficit of 40-100mm is expected in most parts of the country.

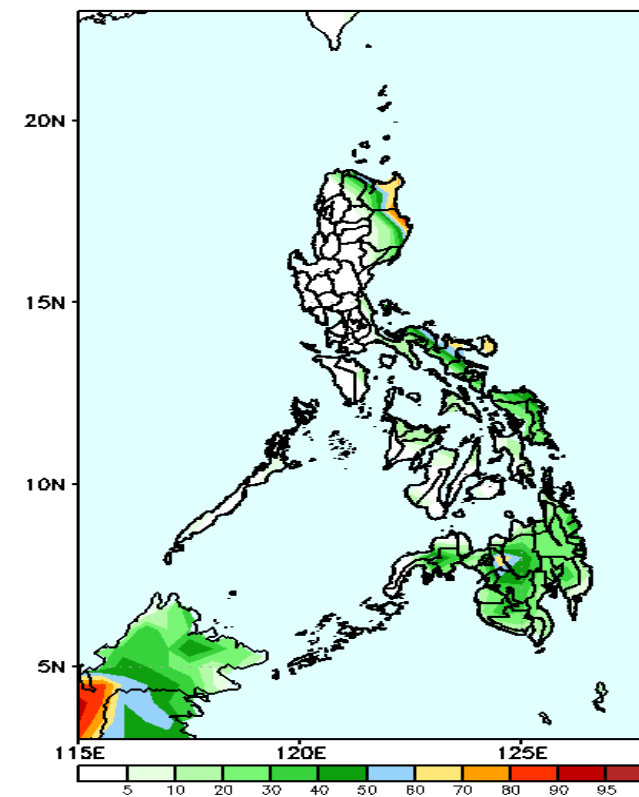
GEFS Week-2 Exceedance Prob. > 25mm
Valid: 20231229 – 20240104



Probability to Exceed 25mm

- High to very high over Apayao, Cagayan, and Isabela;
- Moderate to high over the rest of CAR, Quezon, Bicol Region, Samar provinces, and Mindanao;
- Low to moderate over the rest of the country.

GEFS Week-2 Exceedance Prob. > 50mm
Valid: 20231229 – 20240104



Probability to Exceed 50mm

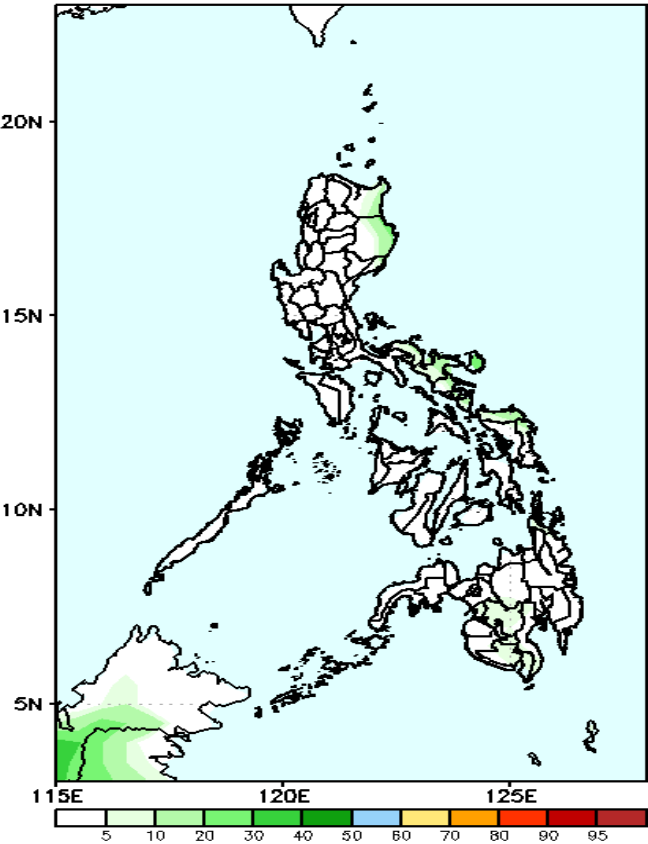
- Moderate to high over Lanao del Sur and the eastern sections of Cagayan and Isabela, and Bicol region;
- Low elsewhere.

Exceedance Probability > 100/150/200 mm

Week 2: Dec 27, 2023 – Jan 02, 2024

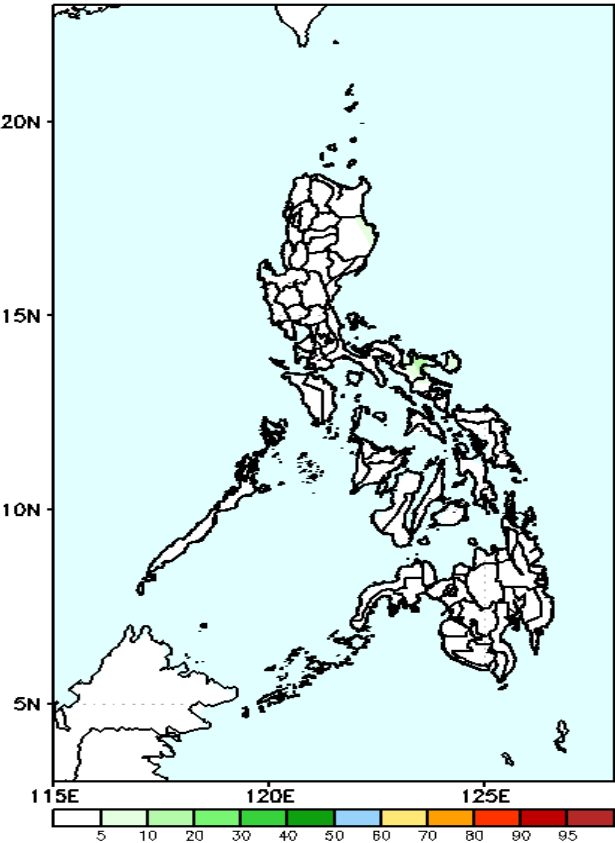
- Very high probability
- High Probability
- Moderate Probability
- Low Probability

GEFS Week-2 Exceedance Prob. > 100mm
Valid: 20231229 – 20240104



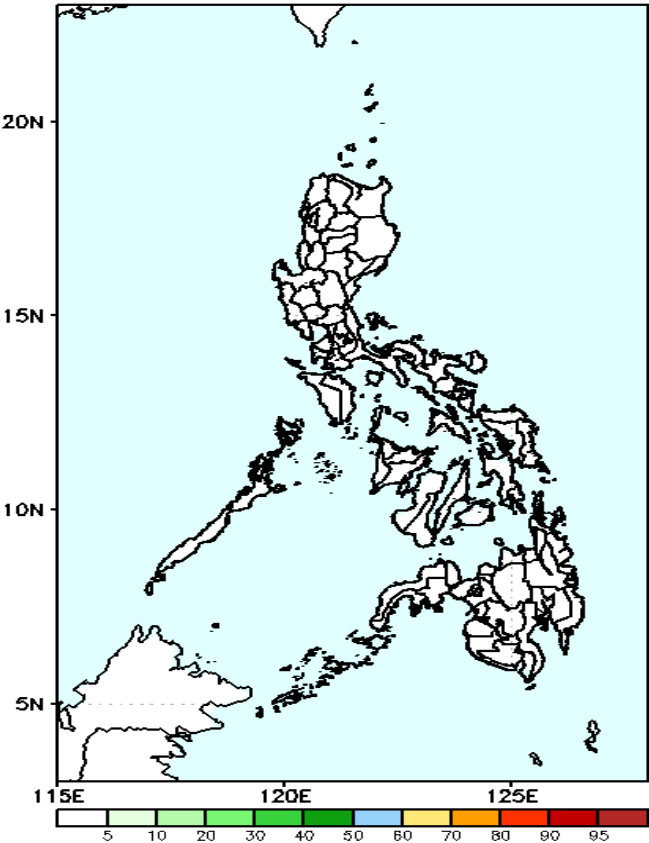
Probability to Exceed 100mm
• Low in most parts of the country.

GEFS Week-2 Exceedance Prob. > 150mm
Valid: 20231229 – 20240104



Probability to Exceed 150mm
• Low in most parts of the country.

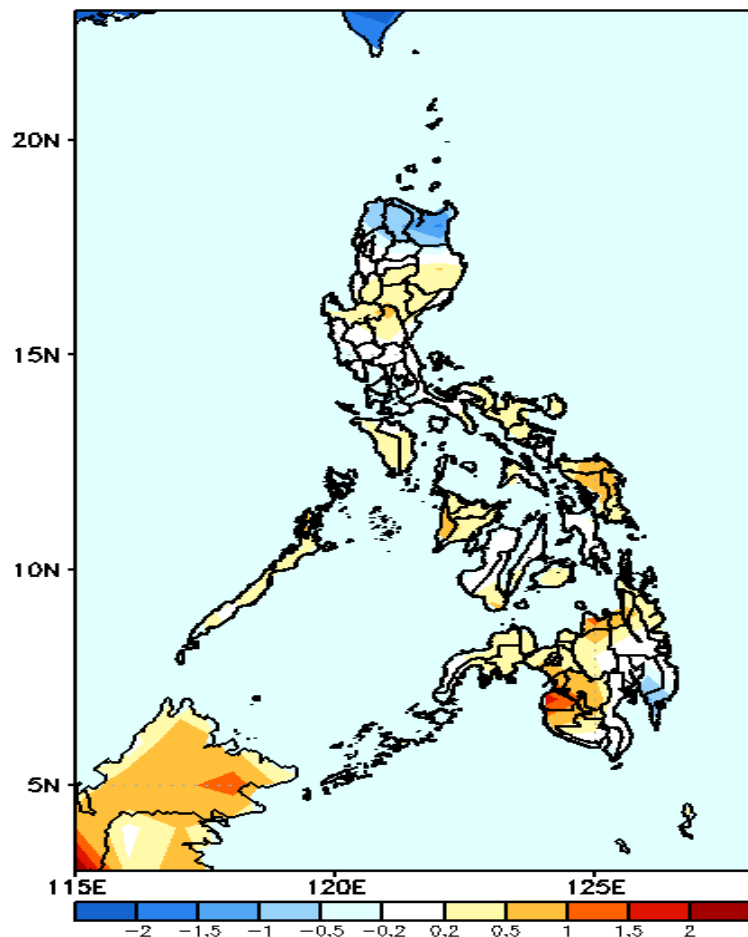
GEFS Week-2 Exceedance Prob. > 200mm
Valid: 20231229 – 20240104



Probability to Exceed 200mm
• Low in most parts of the country.

GEFS Week-1 & 2 Forecasts: T2m Anomaly

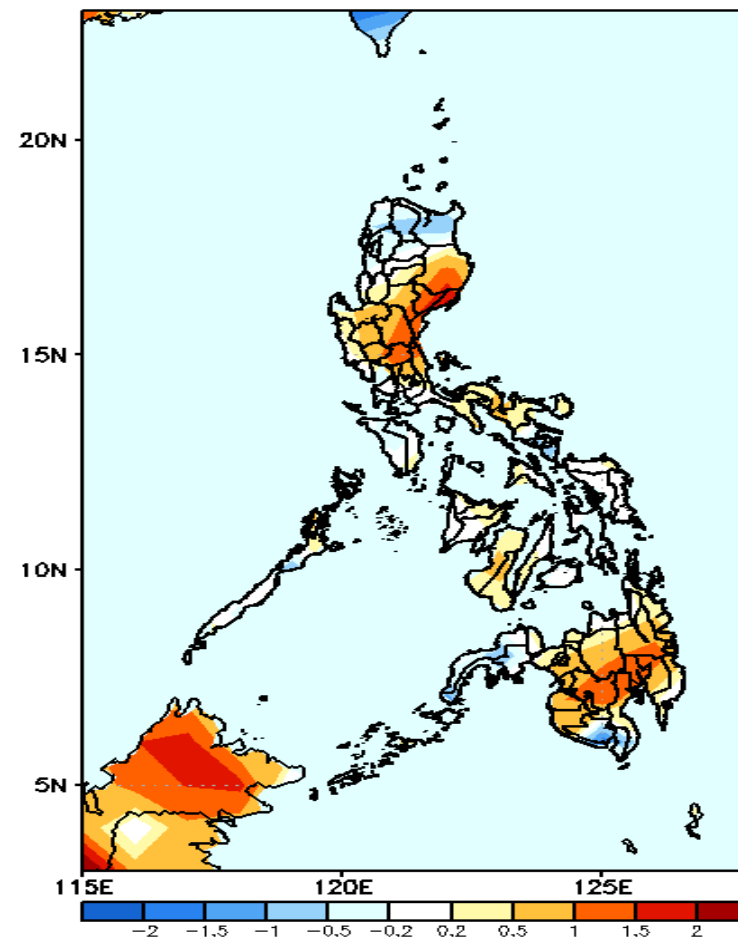
GEFS Week-1 T2m Anomaly
Valid: 20231222 – 20231228



2m Temperature Week 1: Dec 22-28, 2023

Near average to warmer than average surface air temperature will likely be experienced in most parts of the country except in Ilocos Norte, Apayao, Cagayan, and Davao Region where slightly cooler than average surface air temperature is expected.

GEFS Week-2 T2m Anomaly
Valid: 20231229 – 20240104



2m Temperature Week 2: Dec 29, 2023 – Jan 04, 2024

Near average to warmer than average surface air temperature will likely be experienced in most parts of the country except in Apayao, Cagayan, South Cotabato and Zamboanga Peninsula where slightly cooler than average surface air temperature is expected.