



# Week 1 & Week 2 Forecast for the Philippines using GEFS Model

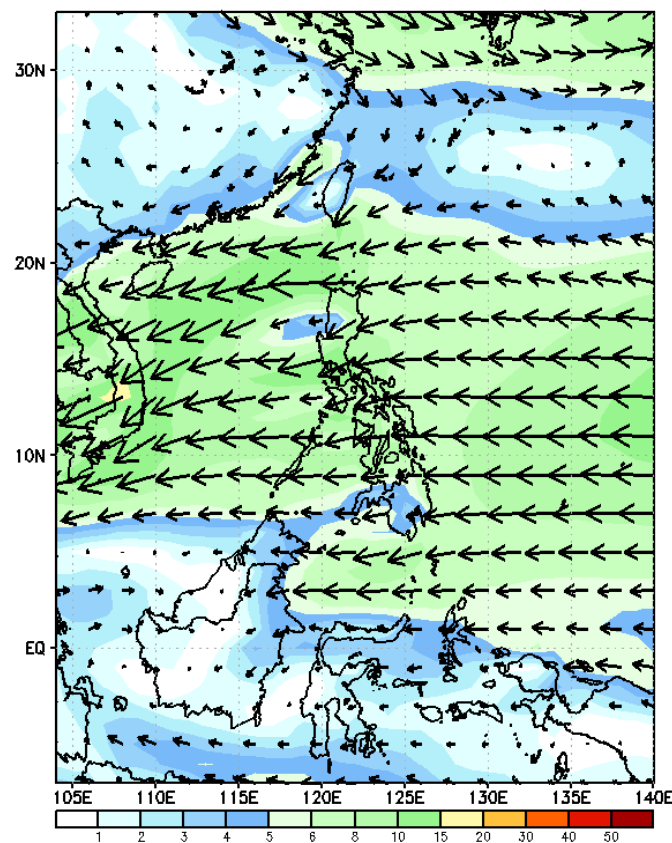


# GEFS Week-1 Forecasts: Wind Forecast

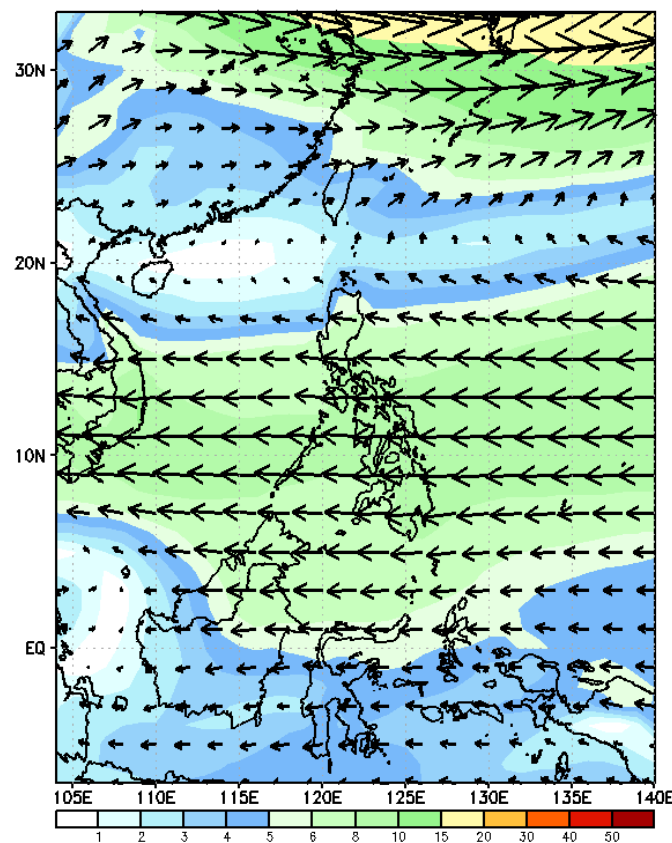
Week 1: Nov 22 - 28, 2023

Nov 22 - 28, 2023

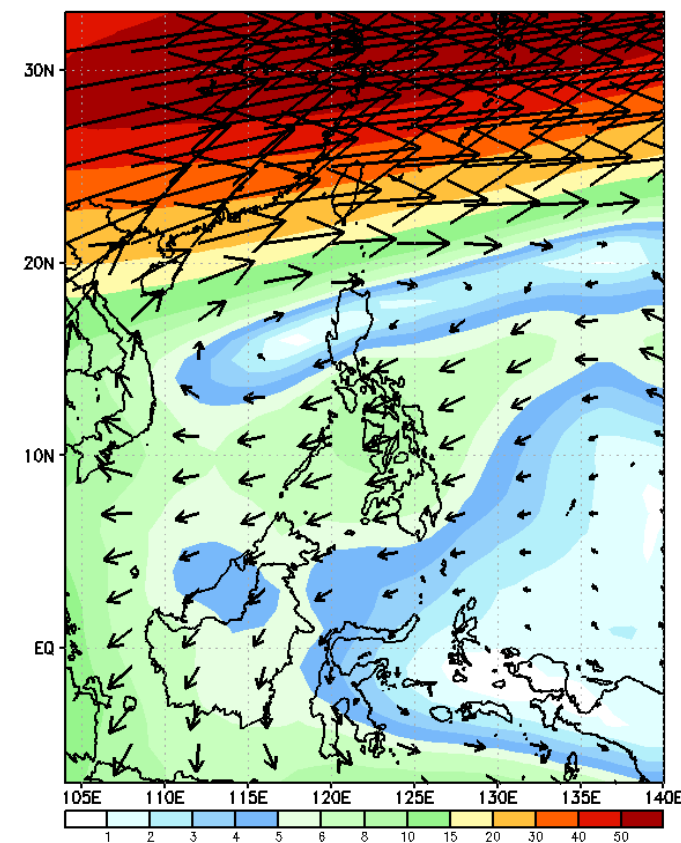
GEFS Week-1 850-hPa Wind Total  
Valid: 20231122 - 20231128



GEFS Week-1 700-hPa Wind Total  
Valid: 20231122 - 20231128

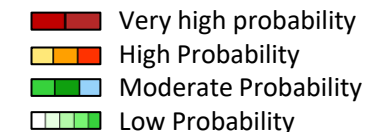


GEFS Week-1 200-hPa Wind Total  
Valid: 20231122 - 20231128



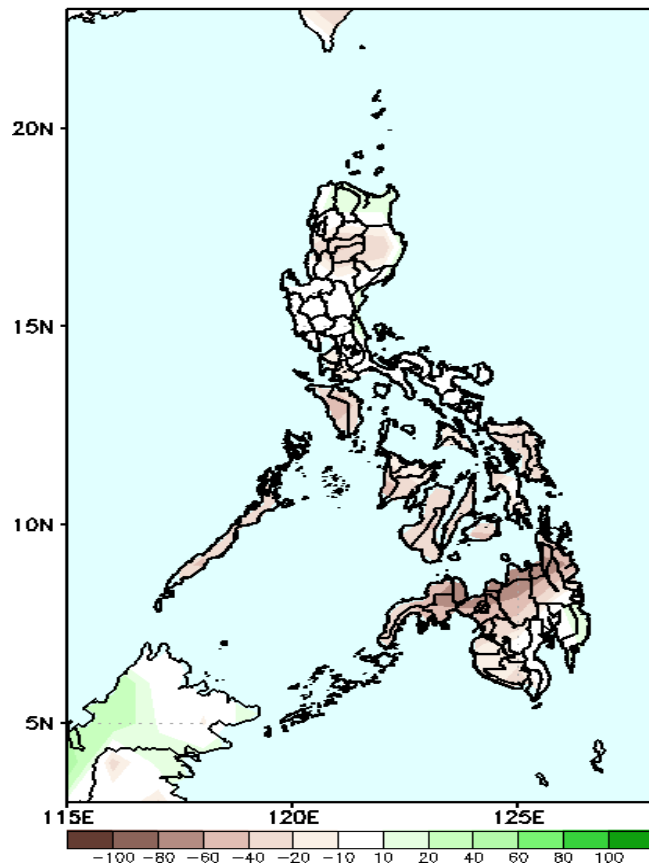
Northeast Monsoon affecting Extreme Northern Luzon. Easterlies affecting the rest of the country.

# Precipitation Anomaly and Exceedance Probability > 25/50 mm



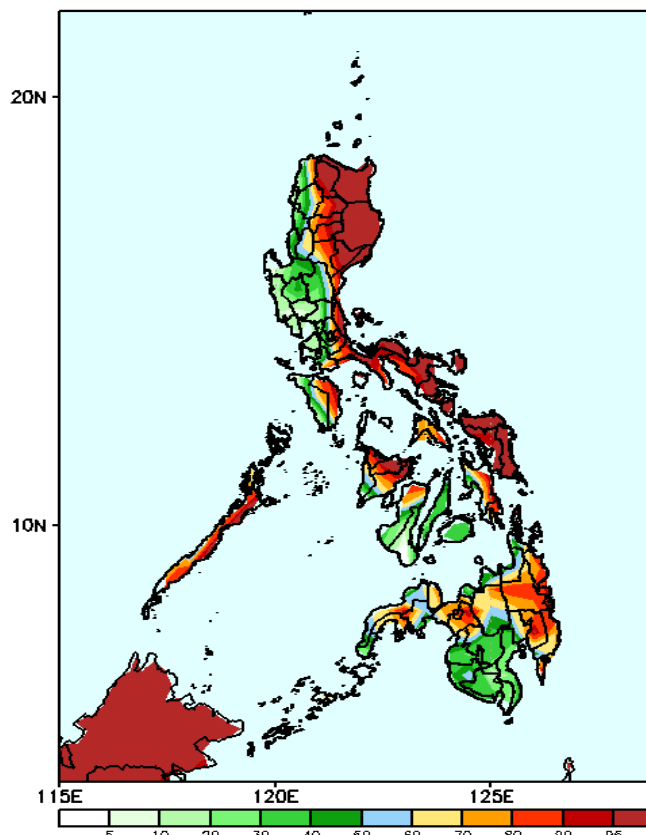
Week 1: Nov 22 - 28, 2023

GEFS Week-1 Precip Anomaly  
Valid: 20231122 - 20231128



Rainfall deficit of 10-60mm is expected in most parts of the country except in Ilocos Norte, Apayao and Cagayan where 10-20mm increase of rainfall is more likely.

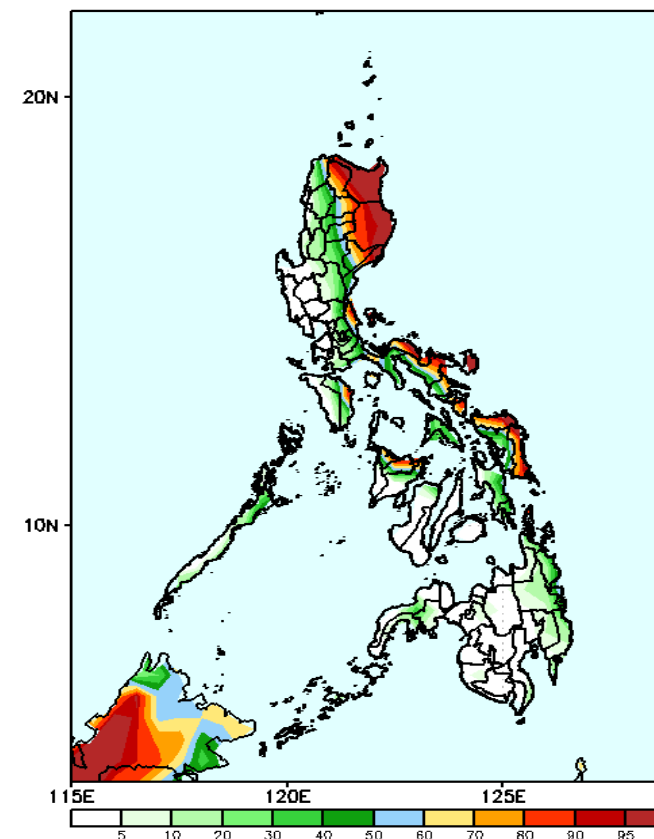
GEFS Week-1 Exceedance Prob. > 25mm  
Valid: 20231122 - 20231128



## Probability to Exceed 25mm

- High to very high over most parts of CAR, Eastern Luzon, Bicol Region, Eastern Visayas, Oriental Mindoro and Palawan;
- Moderate to high over Western Visayas and most parts of Mindanao;
- Low to moderate over the rest of the country.

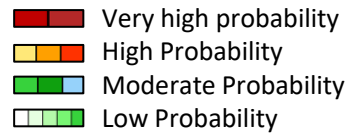
GEFS Week-1 Exceedance Prob. > 50mm  
Valid: 20231122 - 20231128



## Probability to Exceed 50mm

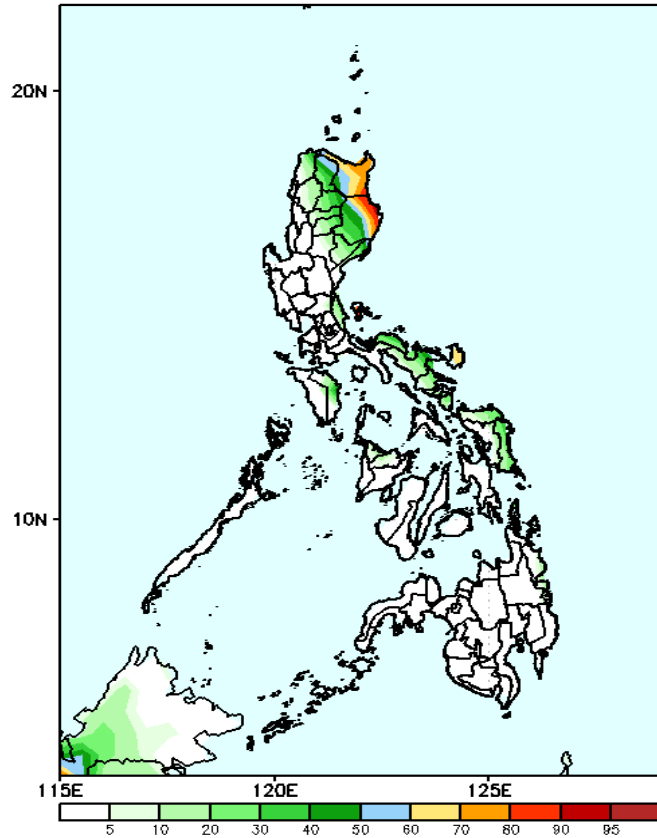
- High to very high over Apayao, Cagayan and Isabela;
- Moderate to high over CAR, Aurora, Quezon, Bicol Region, Samar provinces, Oriental Mindoro, Aklan and Capiz;
- Low elsewhere.

# Exceedance Probability > 100/150/200 mm



Week 1: Nov 22 - 28, 2023

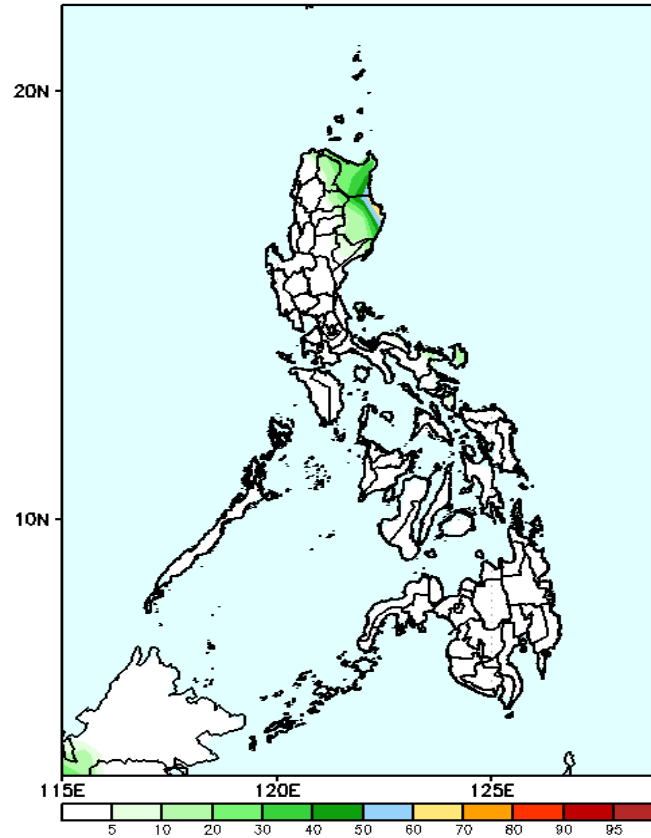
GEFS Week-1 Exceedance Prob. > 100mm  
Valid: 20231122 - 20231128



## Probability to Exceed 100mm

- Moderate to high over Cagayan, Isabela, Cantanduanes;
- Low elsewhere.

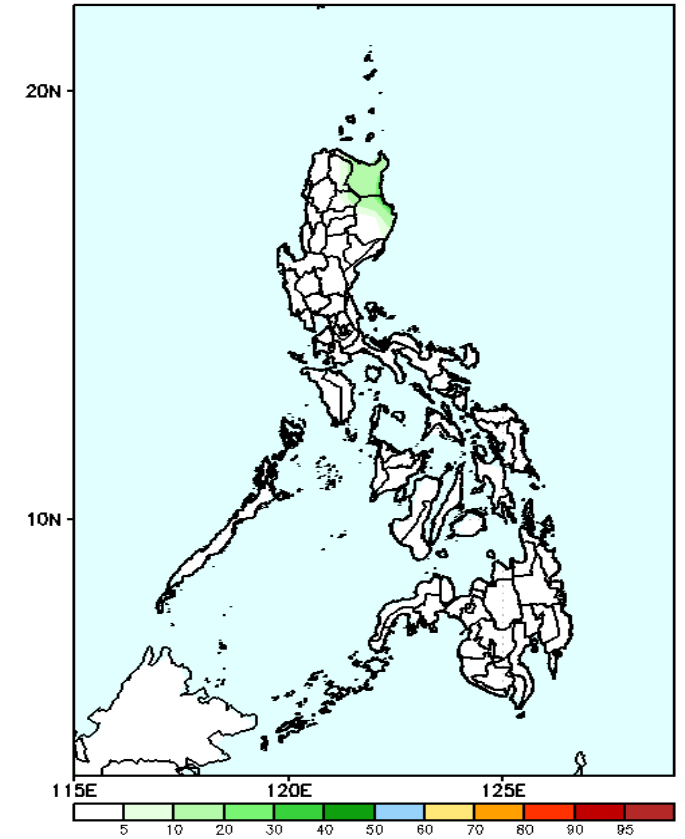
GEFS Week-1 Exceedance Prob. > 150mm  
Valid: 20231122 - 20231128



## Probability to Exceed 150mm

- Moderate to high over the eastern section of Cagayan and Isabela;
- Low elsewhere.

GEFS Week-1 Exceedance Prob. > 200mm  
Valid: 20231122 - 20231128



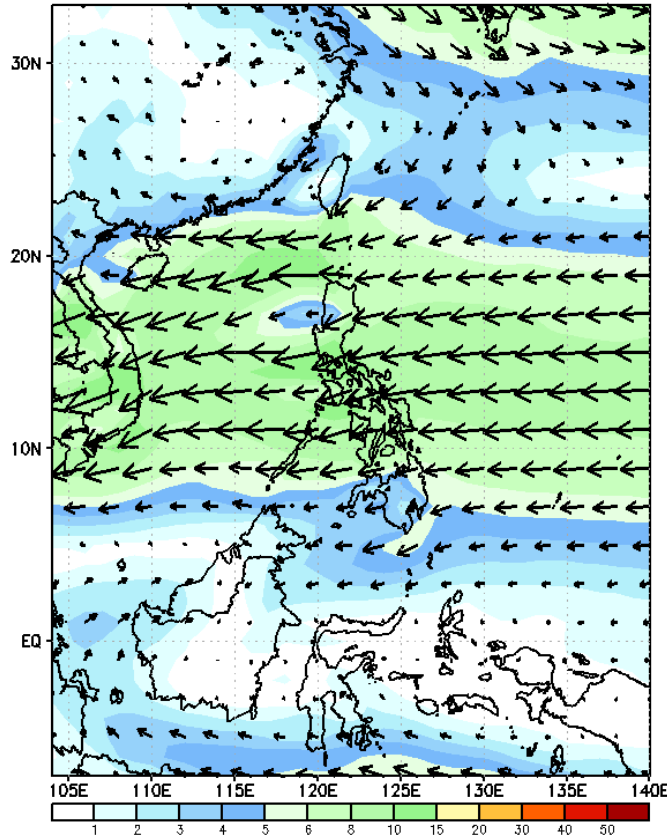
## Probability to Exceed 200mm

- Low in most parts of the country.

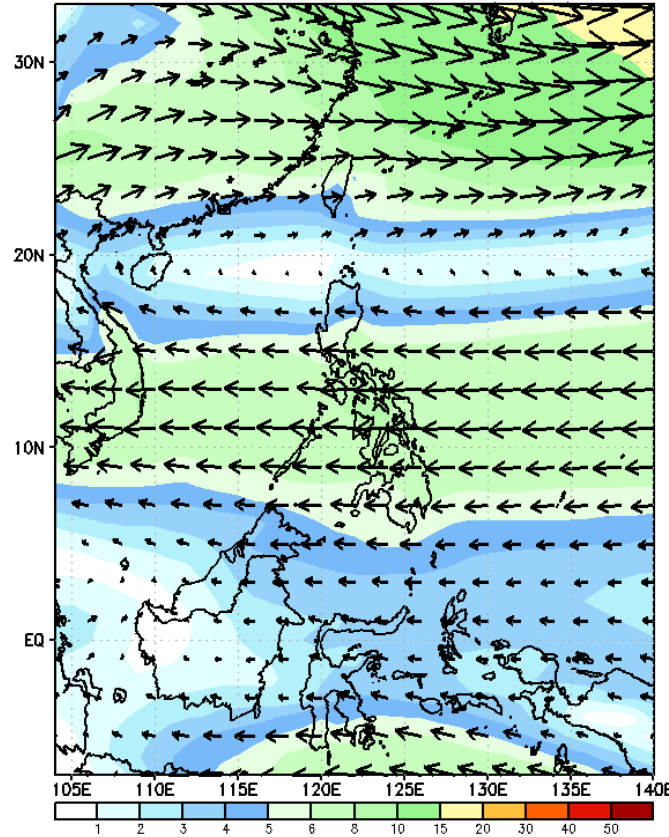
# GEFS Week-2 Forecasts: Wind Forecast

Week 2: Nov 29- Dec 05, 2023

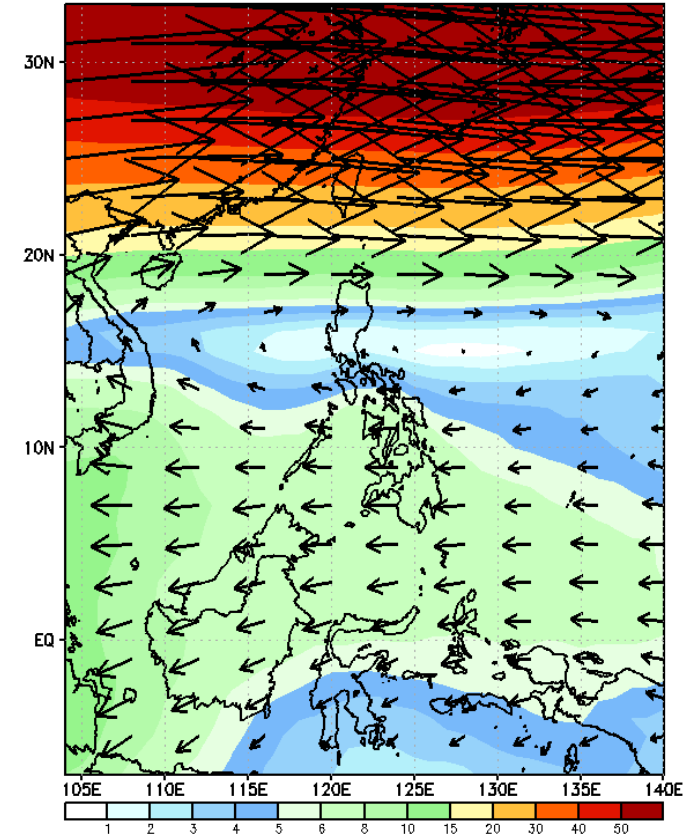
GEFS Week-2 850-hPa Wind Total  
Valid: 20231129 - 20231205



GEFS Week-2 700-hPa Wind Total  
Valid: 20231129 - 20231205



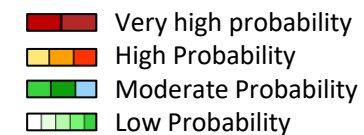
GEFS Week-2 200-hPa Wind Total  
Valid: 20231129 - 20231205



Northeast Monsoon affecting Extreme Northern Luzon. Easterlies affecting the rest of the country.

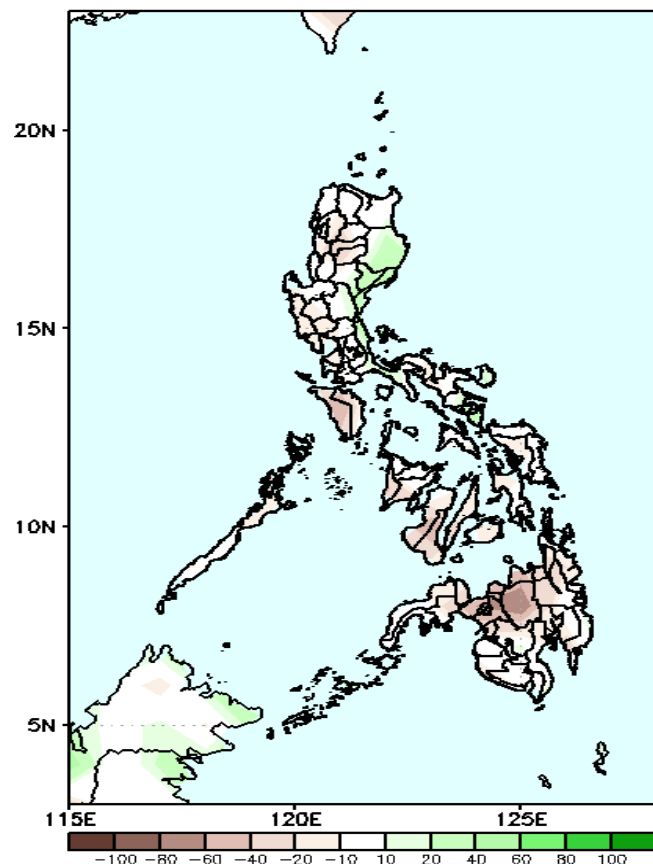


# Precipitation Anomaly and Exceedance Probability > 25/50 mm



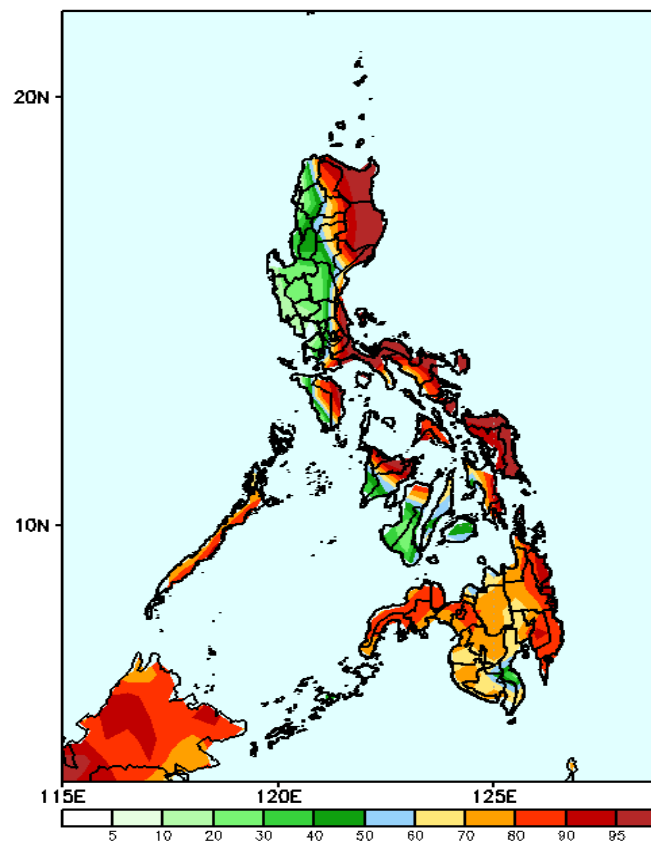
Week 2: Nov 29- Dec 05, 2023

GEFS Week-2 Precip Anomaly  
Valid: 20231129 - 20231205



Rainfall deficit of 10-60mm is expected in most parts of the country except in Isabela, Quirino and Aurora where 20-40mm increase of rainfall is more likely.

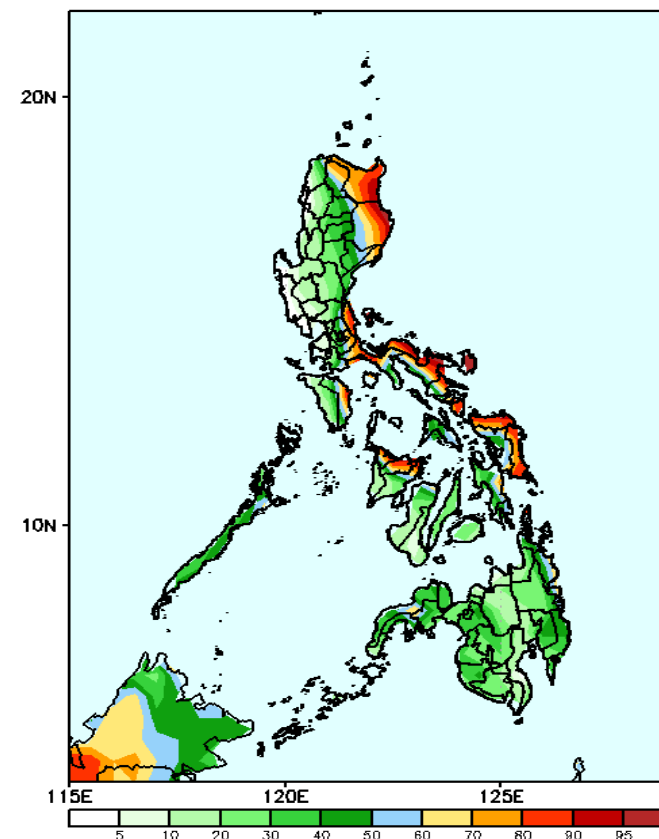
GEFS Week-2 Exceedance Prob. > 25mm  
Valid: 20231129 - 20231205



## Probability to Exceed 25mm

- High to very high over most parts of CAR, Eastern Luzon, Bicol Region, Eastern Visayas and most of Mindanao
- Moderate to high over the rest of the country.

GEFS Week-2 Exceedance Prob. > 50mm  
Valid: 20231129 - 20231205

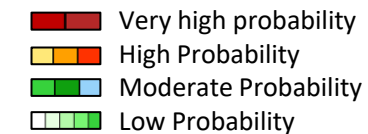


## Probability to Exceed 50mm

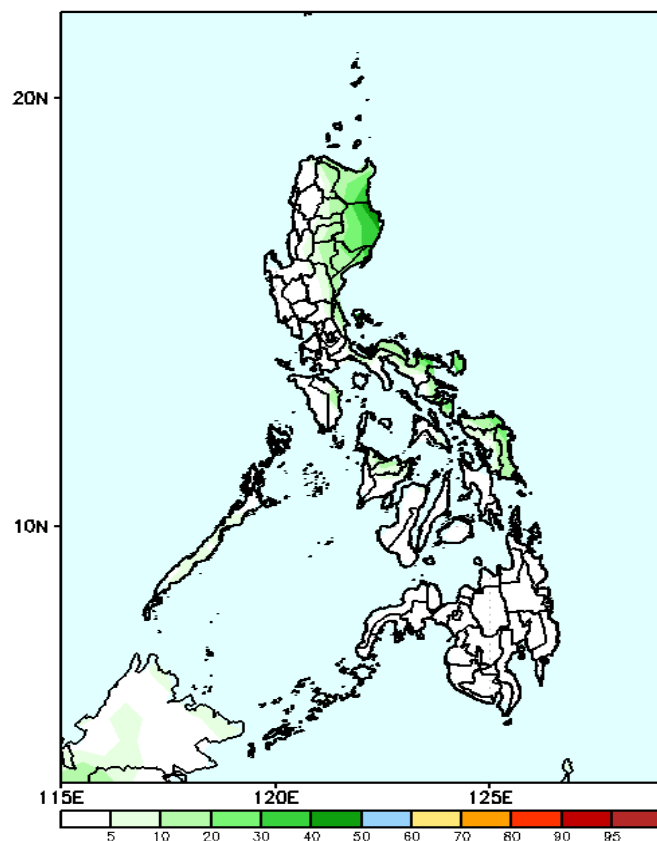
- Moderate to high over Eastern Luzon, Bicol Region, Oriental Mindoro, Palawan, Eastern Visayas, Aklan, Capiz, and most of Mindanao;
- Low to moderate elsewhere.

# Exceedance Probability > 100/150/200 mm

Week 2: Nov 29- Dec 05, 2023



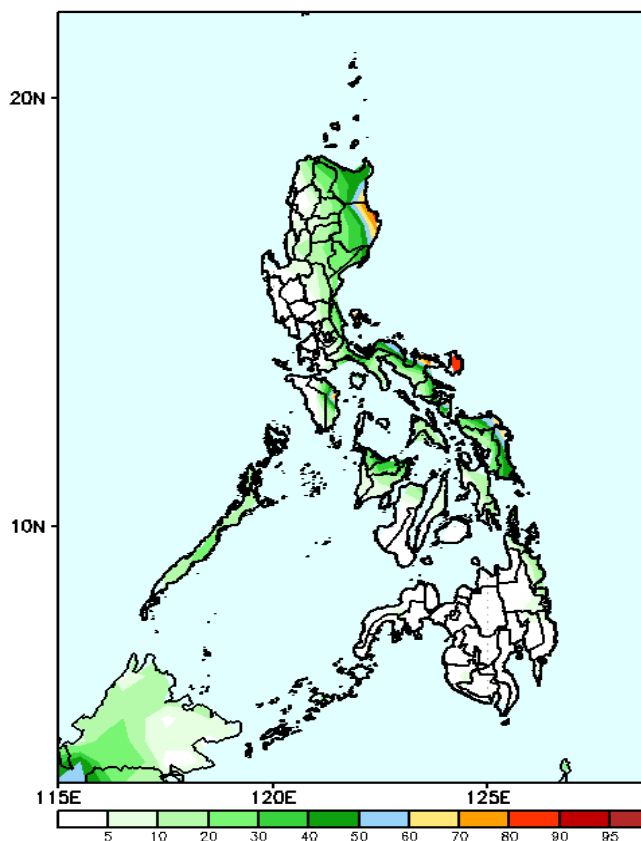
GEFS Week-2 Exceedance Prob. > 150mm  
Valid: 20231129 - 20231205



## Probability to Exceed 100mm

- Moderate to high over eastern section of Cagayan, Isabela, Catanduanes and Northern and Eastern Samar;
- Low over the rest of the country.

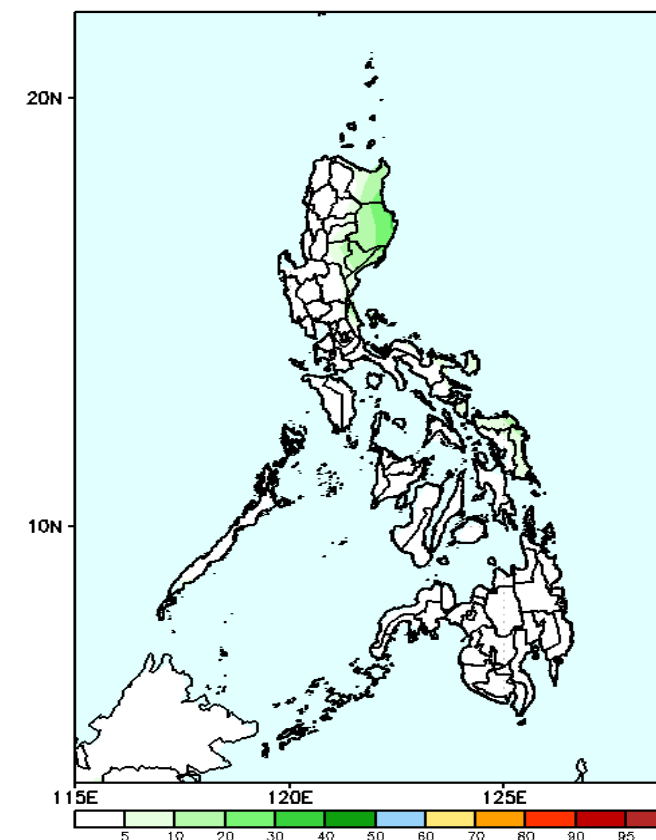
GEFS Week-2 Exceedance Prob. > 100mm  
Valid: 20231129 - 20231205



## Probability to Exceed 150mm

- Low in most parts of the country.

GEFS Week-2 Exceedance Prob. > 200mm  
Valid: 20231129 - 20231205

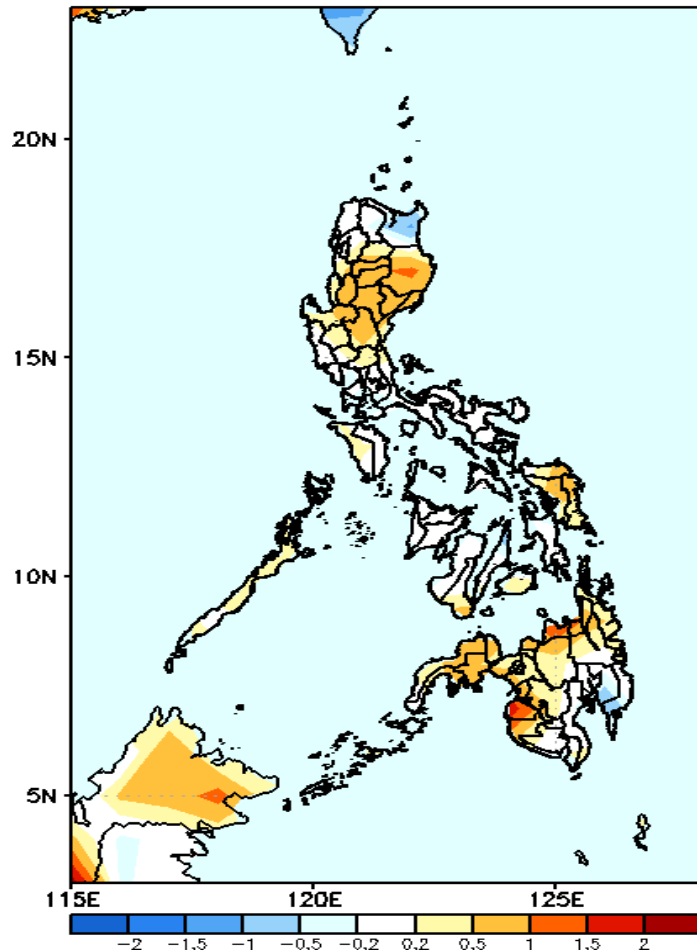


## Probability to Exceed 200mm

- Low in most parts of the country.

# GEFS Week-1 & 2 Forecasts: T2m Anomaly

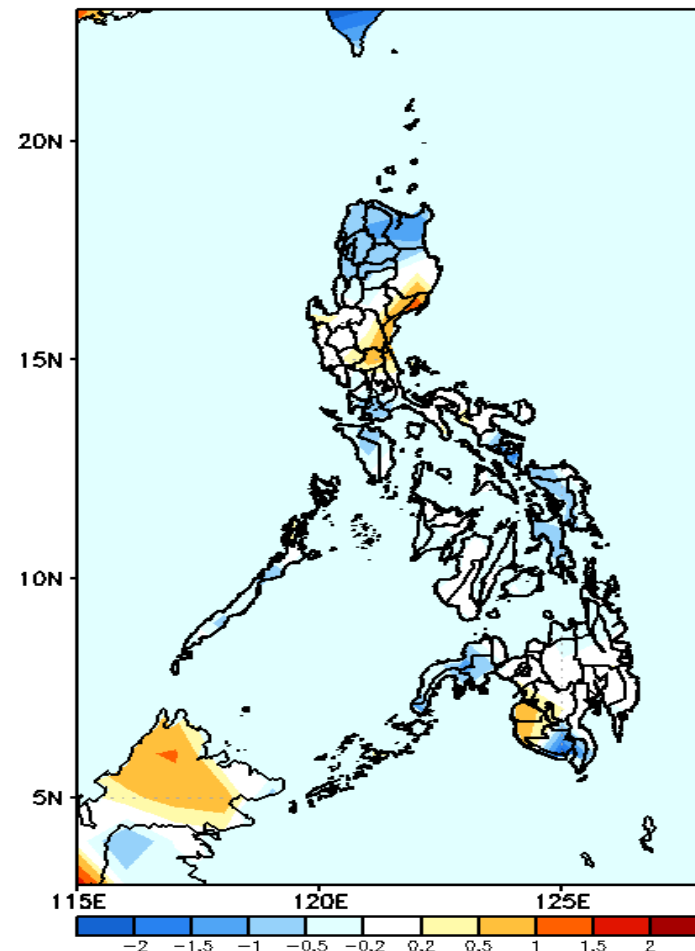
GEFS Week-1 T2m Anomaly  
Valid: 20231122 – 20231128



## 2m Temperature Week 1: Nov 22-28, 2023

Average to warmer than average surface air temperature will likely be experienced in most parts of the country except Cagayan, Davao de Oro and Davao Oriental were slightly cooler than average temperature is expected.

GEFS Week-2 T2m Anomaly  
Valid: 20231129 – 20231205



## 2m Temperature Week 2: Nov 29- Dec 05, 2023

Average to cooler than average surface air temperature will likely be experienced in most parts of the country except in the eastern section of Central Luzon, Quirino, Maguindanao and Sultan Kudarat where slightly warmer to warmer than average temperature is expected.