



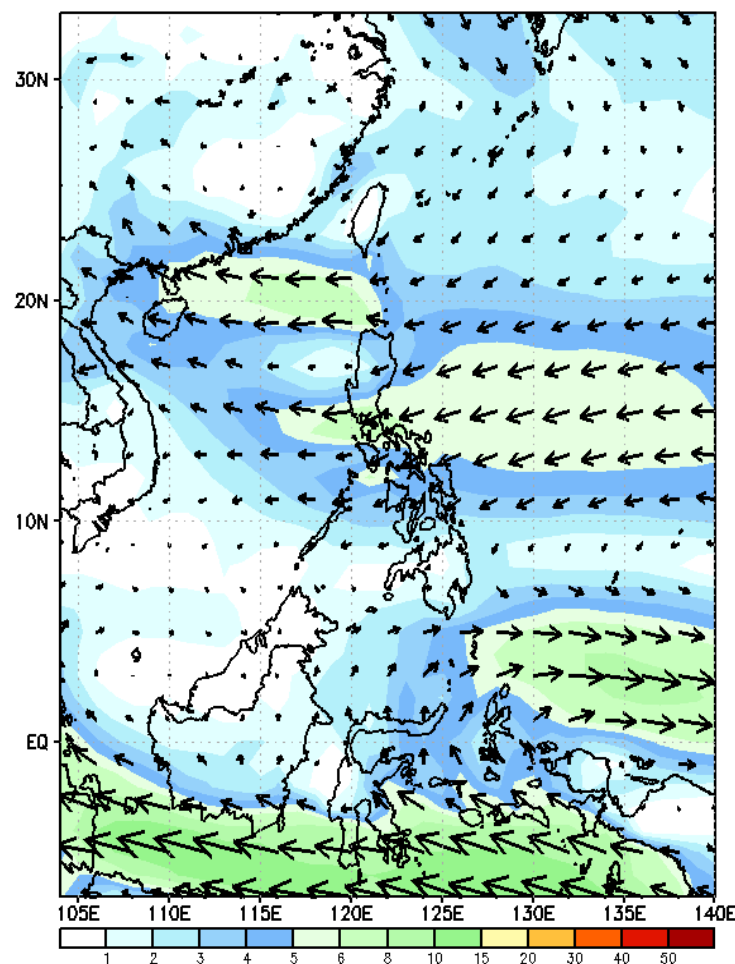
Week 1 & Week 2 Forecast for the Philippines using GEFS Model



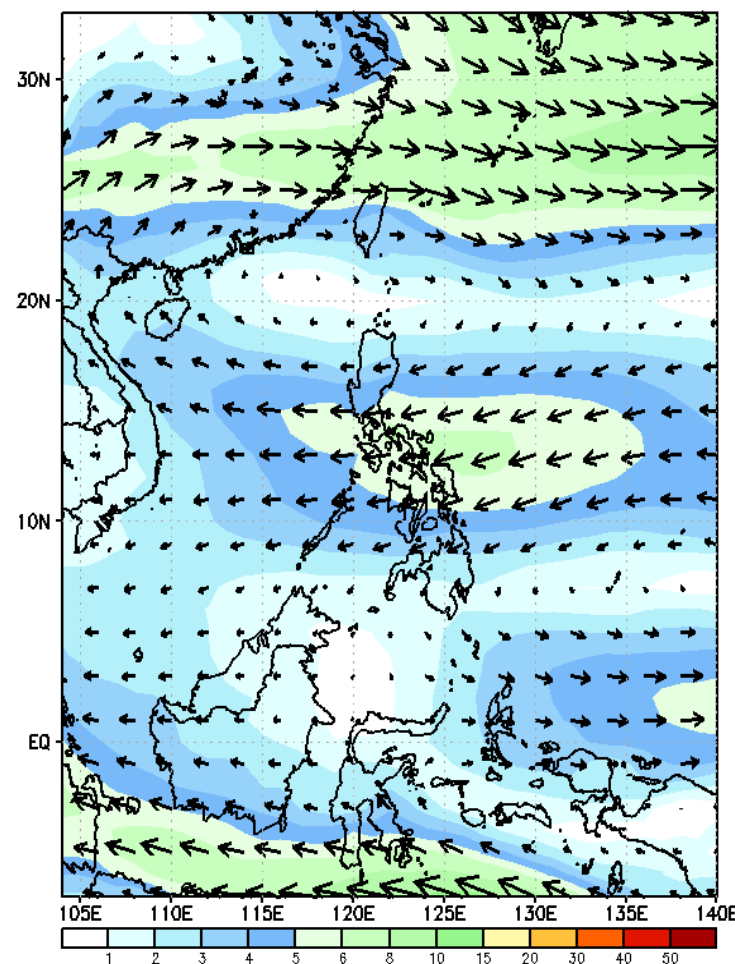
GEFS Week-1 Forecasts: Wind Forecast

Week 1: Oct 23-29, 2023

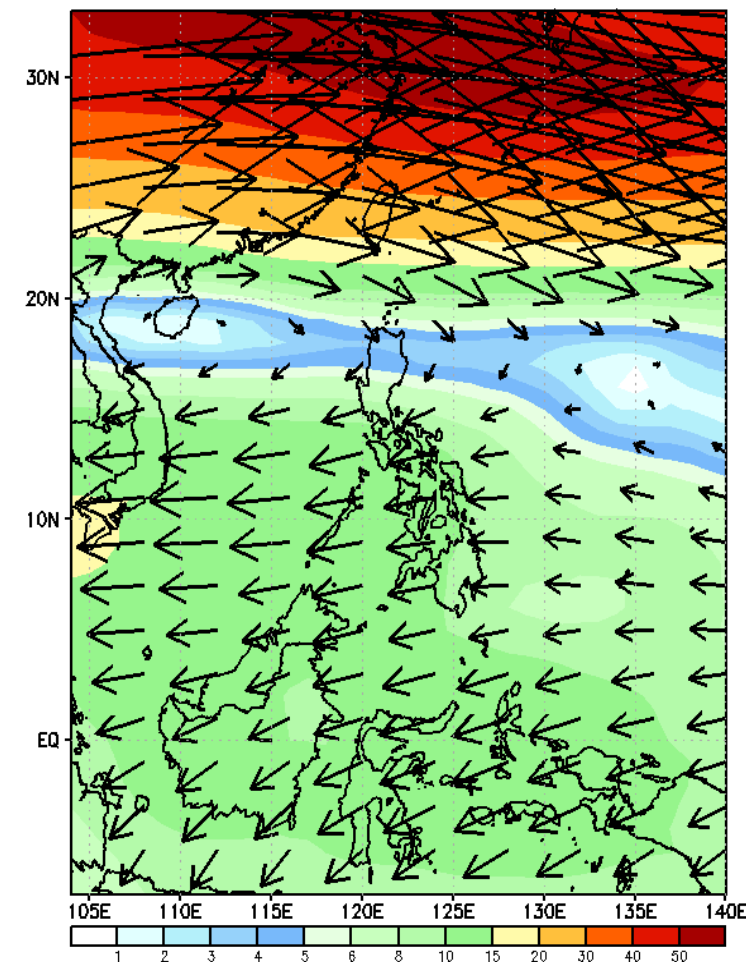
GEFS Week-1 850-hPa Wind Total
Valid: 20231023 - 20231029



GEFS Week-1 700-hPa Wind Total
Valid: 20231023 - 20231029

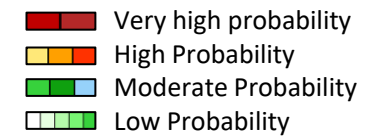


GEFS Week-1 200-hPa Wind Total
Valid: 20231023 - 20231029



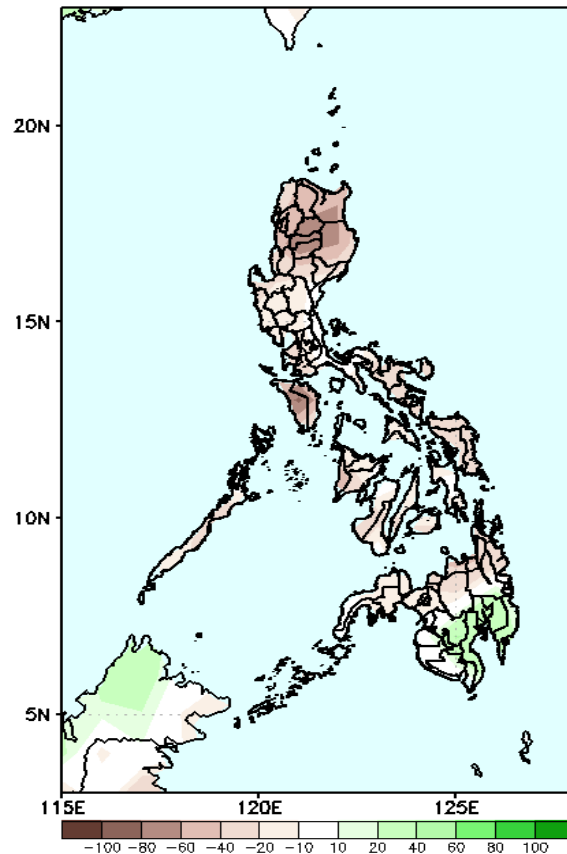
Northeast Monsoon affecting Extreme Northern Luzon. Easterlies affecting most parts of the country.

Precipitation Anomaly and Exceedance Probability > 25/50 mm



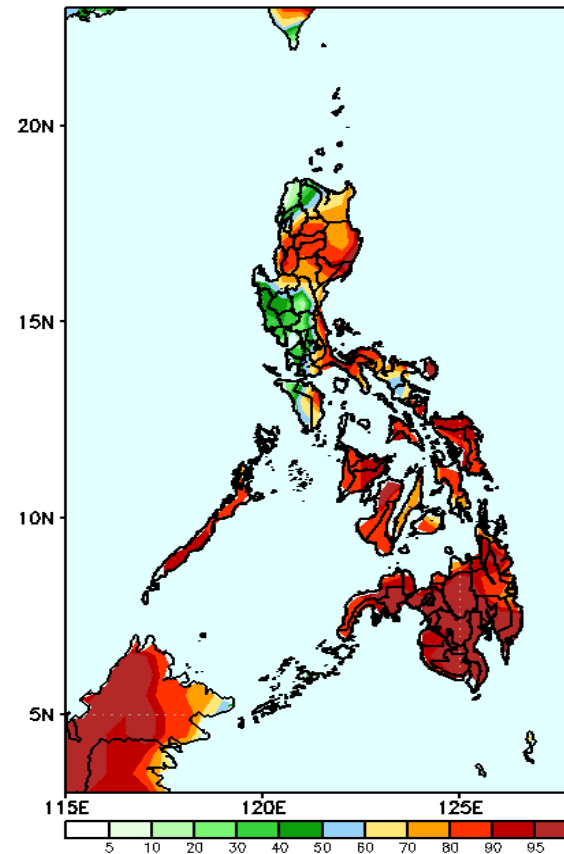
Week 1: Oct 23-29, 2023

GEFS Week-1 Precip Anomaly
Valid: 20231023 - 20231029



Rainfall deficit of 40-90mm is expected in most parts of the country except in Davao Region and North Cotabato where there is 40-60mm increase of rainfall.

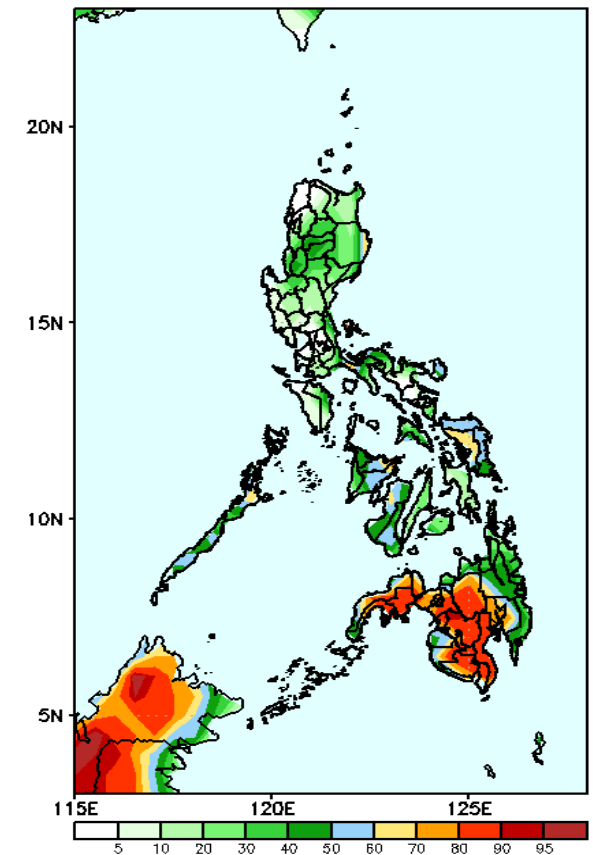
GEFS Week-1 Exceedance Prob. > 25mm
Valid: 20231023 - 20231029



Probability to Exceed 25mm

- High to very high in most parts of the country.
- Moderate to high over Ilocos Norte, Apayao, Abra, Central Luzon, NCR, Cavite and Mindoro provinces.

GEFS Week-1 Exceedance Prob. > 50mm
Valid: 20231023 - 20231029



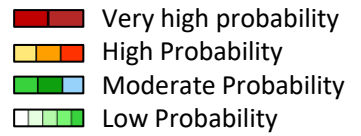
Probability to Exceed 50mm

- Moderate to high over the eastern portion of Isabela, Palawan, Cantaduanes and most parts of Visayas and Mindanao;
- Low to moderate over the rest of Luzon.

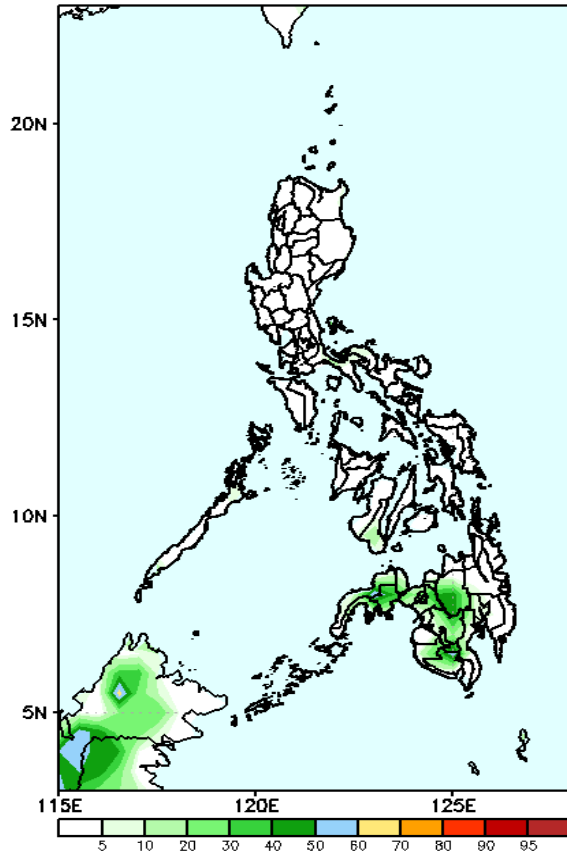


Exceedance Probability > 100/150/200 mm

Week 1: Oct 23-29, 2023



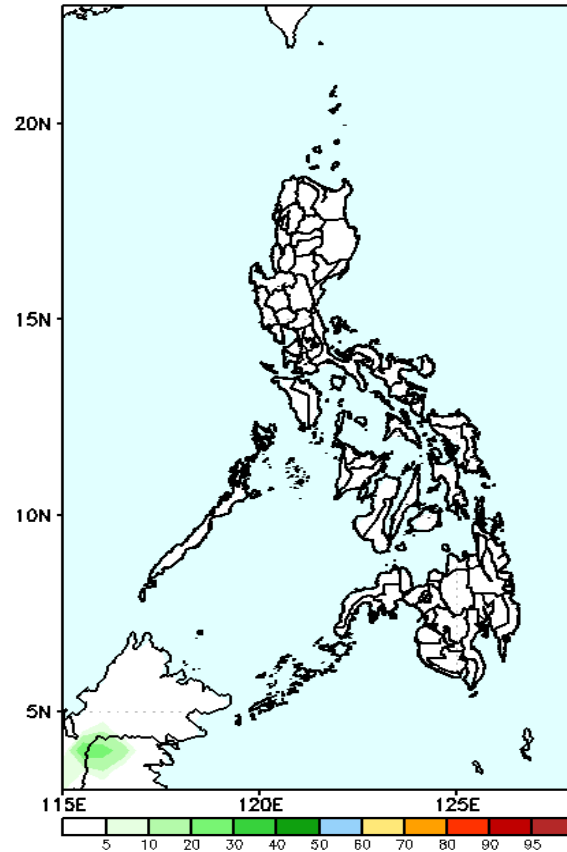
GEFS Week-1 Exceedance Prob. > 100mm
Valid: 20231023 - 20231029



Probability to Exceed 100mm

- Low in most parts of the country.

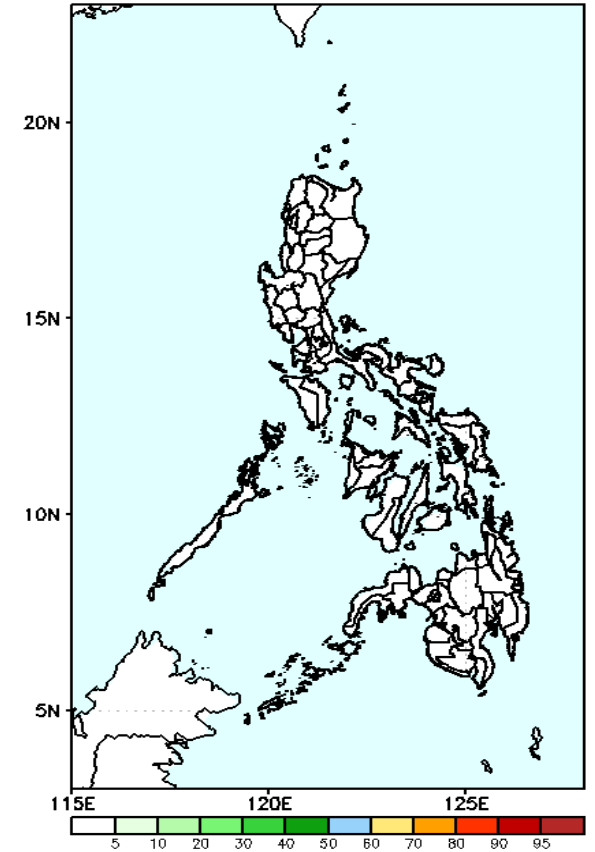
GEFS Week-1 Exceedance Prob. > 150mm
Valid: 20231023 - 20231029



Probability to Exceed 150mm

- Low in most parts of the country.

GEFS Week-1 Exceedance Prob. > 200mm
Valid: 20231023 - 20231029



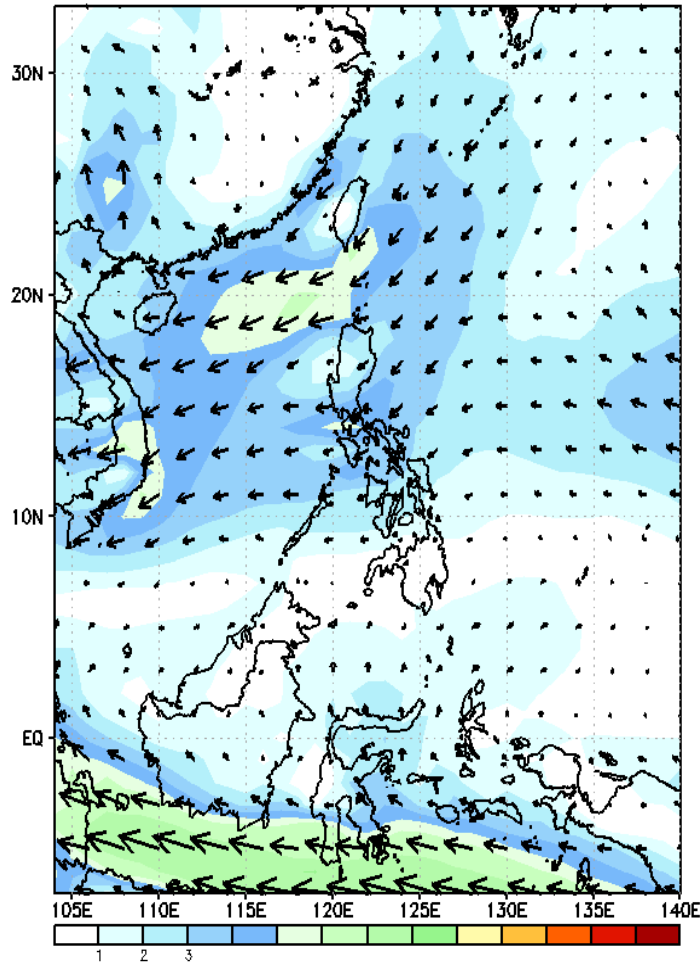
Probability to Exceed 200mm

- Low in most parts of the country.

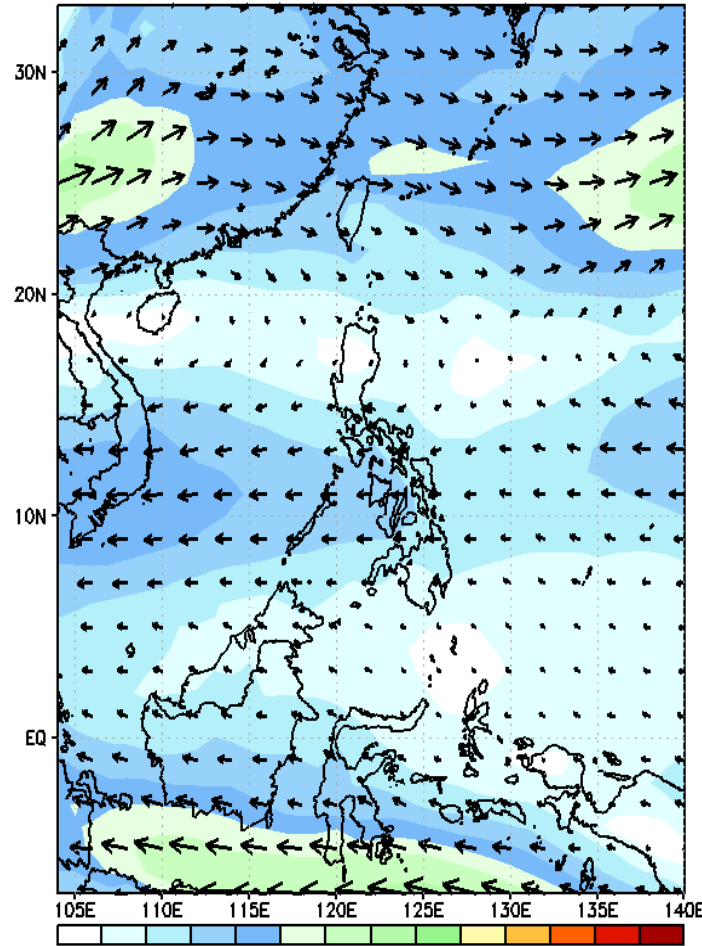
GEFS Week-2 Forecasts: Wind Forecast

Week 2: Oct 30- Nov 05, 2023

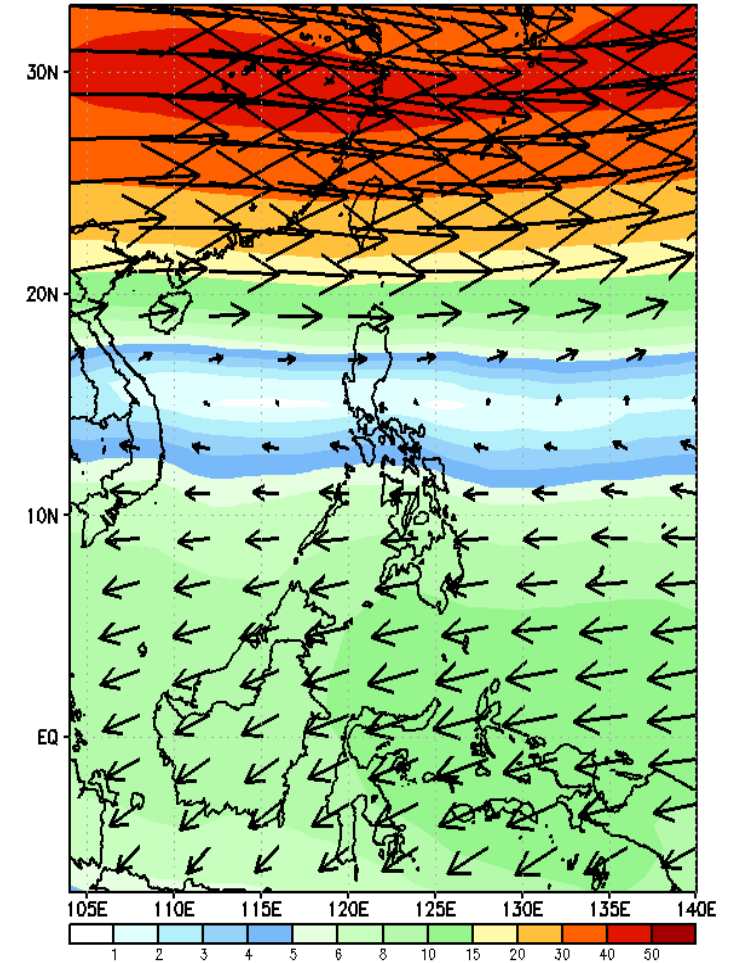
GEFS Week-2 850-hPa Wind Total
Valid: 20231030 - 20231105



GEFS Week-2 700-hPa Wind Total
Valid: 20231030 - 20231105

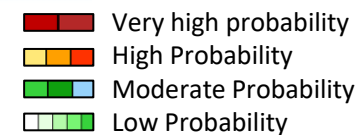


GEFS Week-2 200-hPa Wind Total
Valid: 20231030 - 20231105



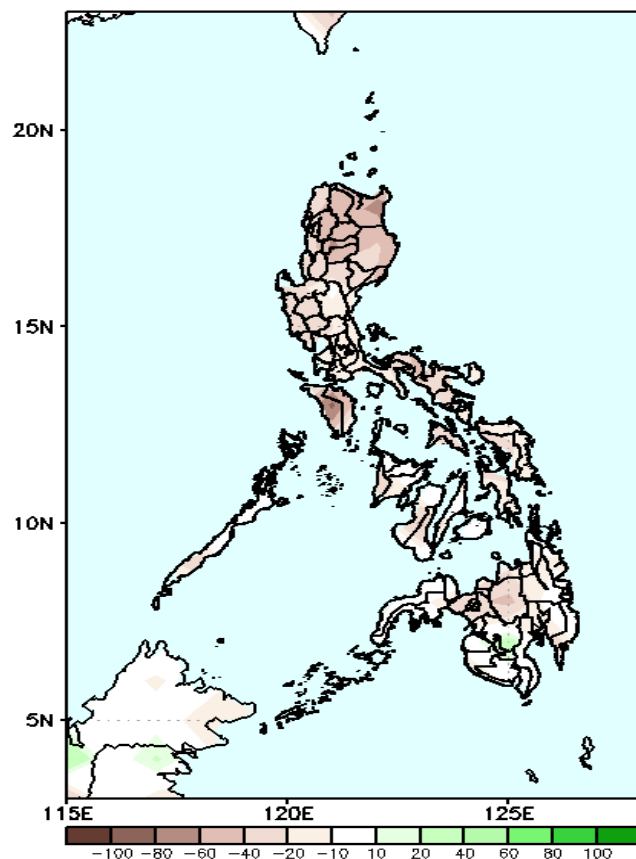
Northeast Monsoon affecting Northern and central Luzon. Easterlies affecting the rest of the country.

Precipitation Anomaly and Exceedance Probability > 25/50 mm



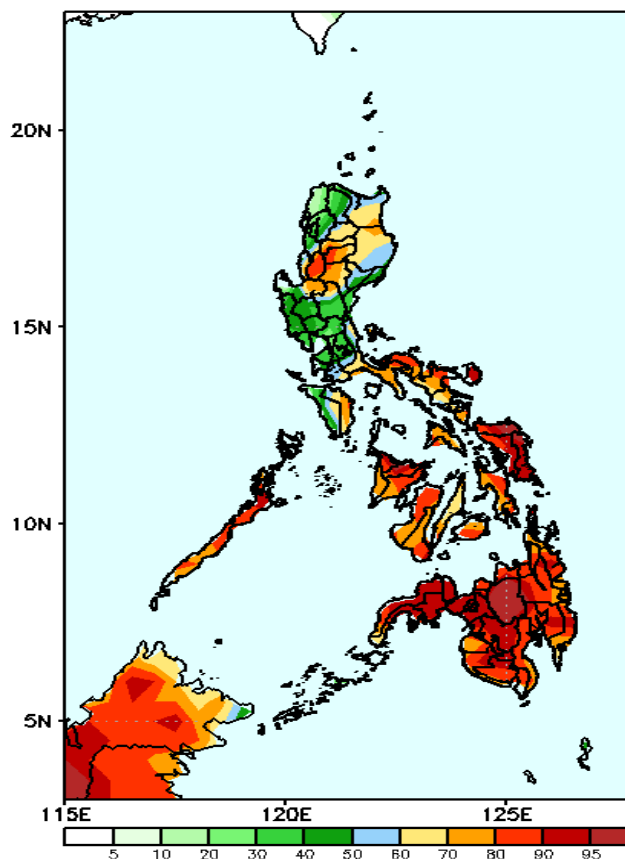
Week 2: Oct 30- Nov 05, 2023

GEFS Week-2 Precip Anomaly
Valid: 20231030 - 20231105



Rainfall deficit of 20-80mm will be likely in most parts of the country.

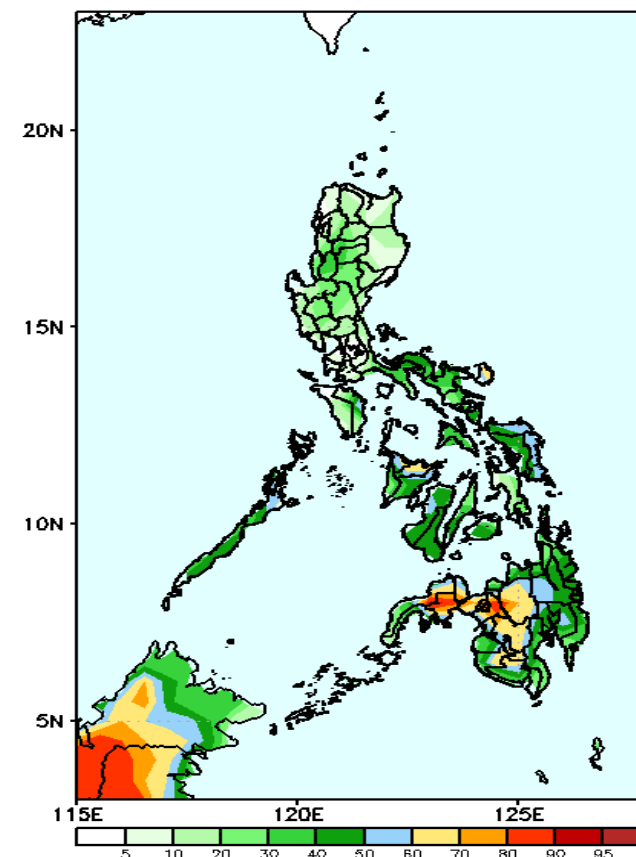
GEFS Week-2 Exceedance Prob. > 25mm
Valid: 20231030 - 20231105



Probability to Exceed 25mm

- High to very high over Palawan, Bicol Region, Visayas, and most of Mindanao;
- Moderate to high over the rest of Luzon.

GEFS Week-2 Exceedance Prob. > 50mm
Valid: 20231030 - 20231105

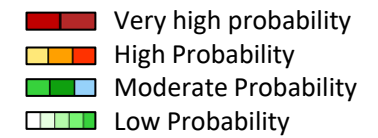


Probability to Exceed 50mm

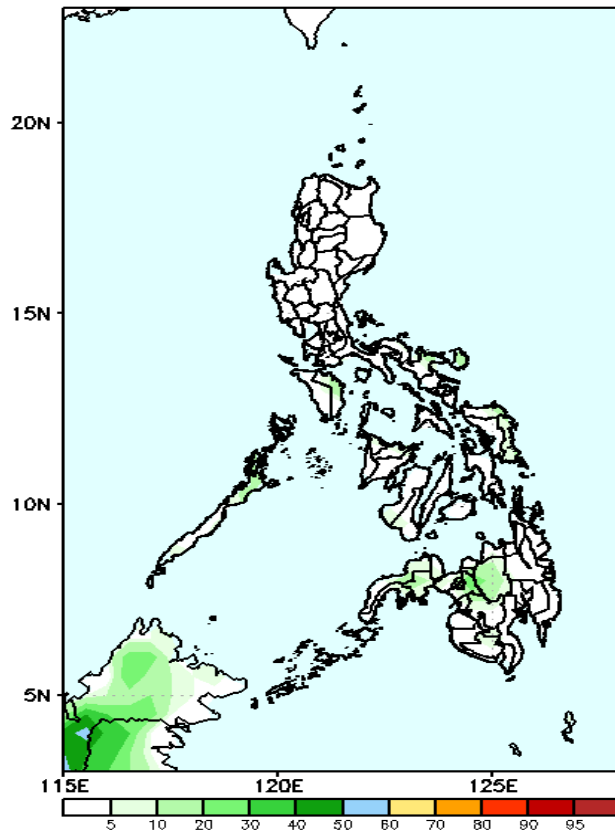
- Moderate to high in Bicol Region and most parts of Visayas and Mindanao;
- Low to moderate over the rest of Luzon.

Exceedance Probability > 100/150/200 mm

Week 2: Oct 30- Nov 05, 2023



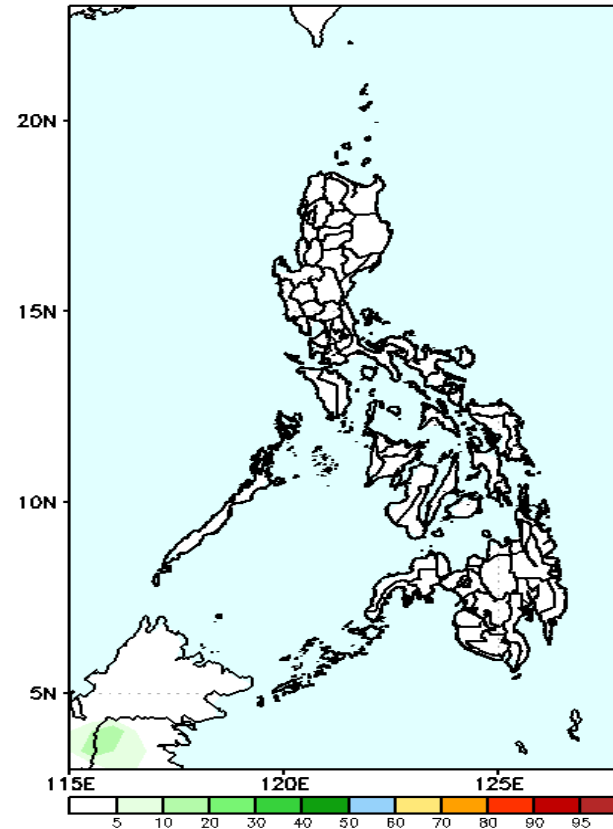
GEFS Week-2 Exceedance Prob. > 100mm
Valid: 20231030 - 20231105



Probability to Exceed 100mm

- Low in most parts of the country.

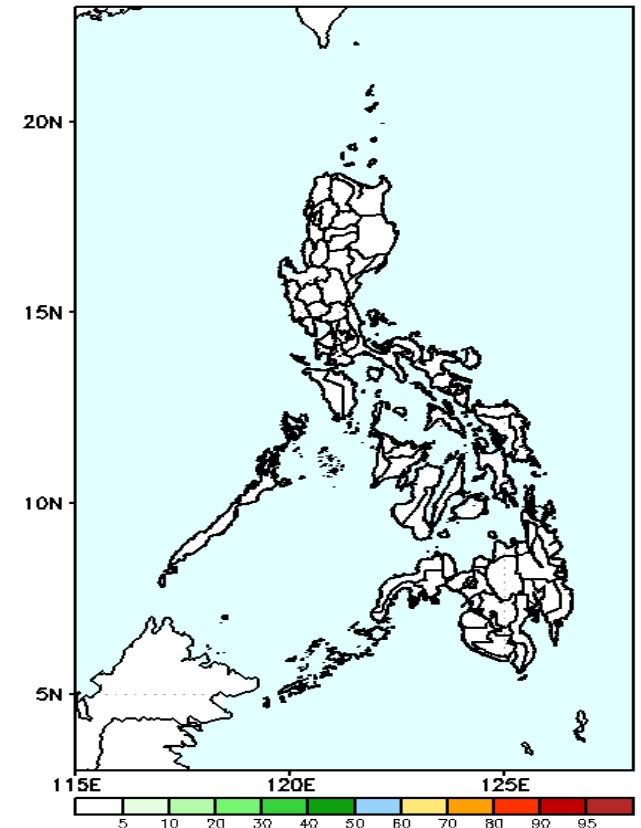
GEFS Week-2 Exceedance Prob. > 150mm
Valid: 20231030 - 20231105



Probability to Exceed 150mm

- Low in most parts of the country.

GEFS Week-2 Exceedance Prob. > 200mm
Valid: 20231030 - 20231105

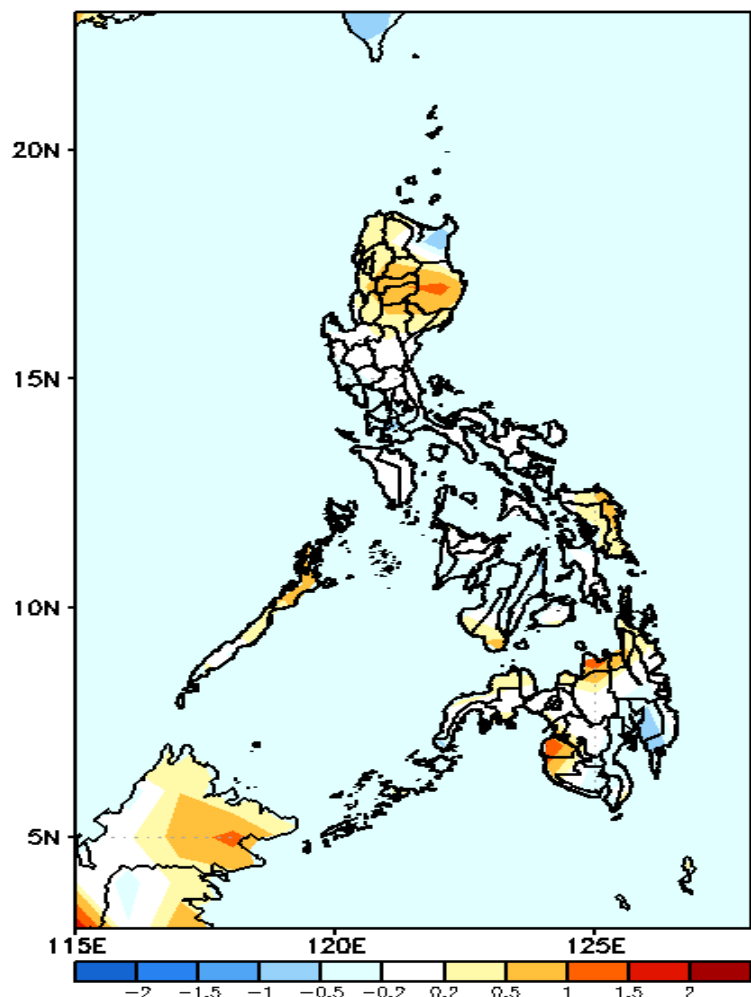


Probability to Exceed 200mm

- Low in most parts of the country.

GEFS Week-1 & 2 Forecasts: T2m Anomaly

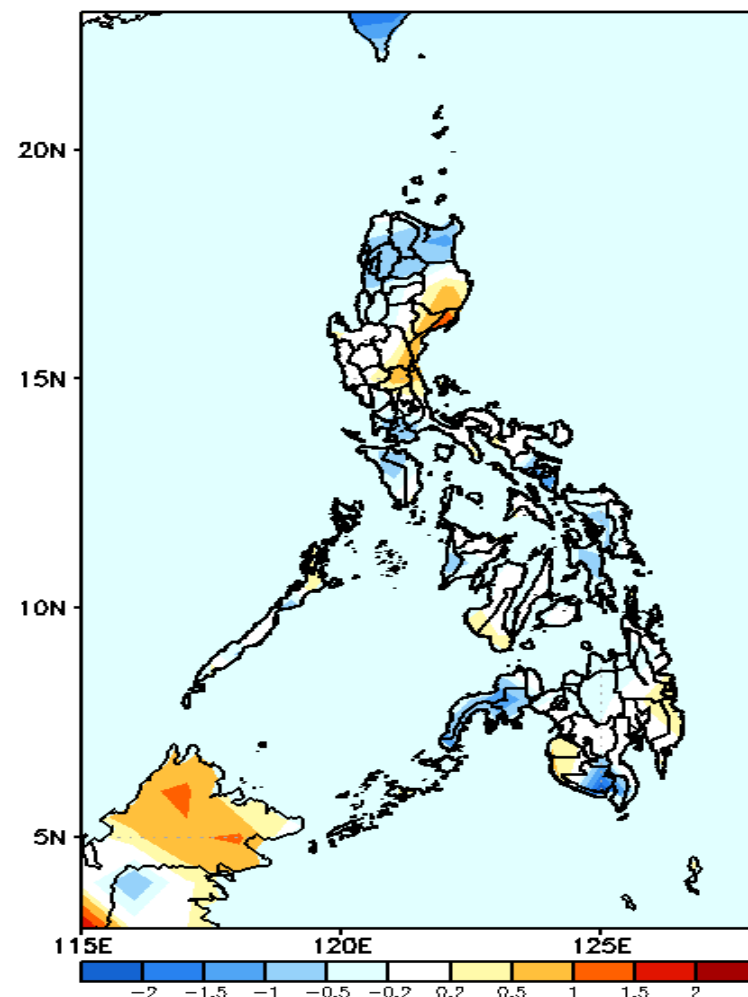
GEFS Week-1 T2m Anomaly
Valid: 20231023 - 20231029



2m Temperature Week 1: Oct 23-29, 2023

Average to warmer than average surface air temperature will likely be experienced in most parts of the country except in some parts of Cagayan and Davao Region where slightly cooler temperature is expected.

GEFS Week-2 T2m Anomaly
Valid: 20231030 - 20231105



2m Temperature Week 2: Oct 30- Nov 05, 2023

Average to cooler than average surface air temperature will likely be experienced in most parts of the country except in some areas in eastern Luzon where slightly warmer to warmer temperature is expected.