



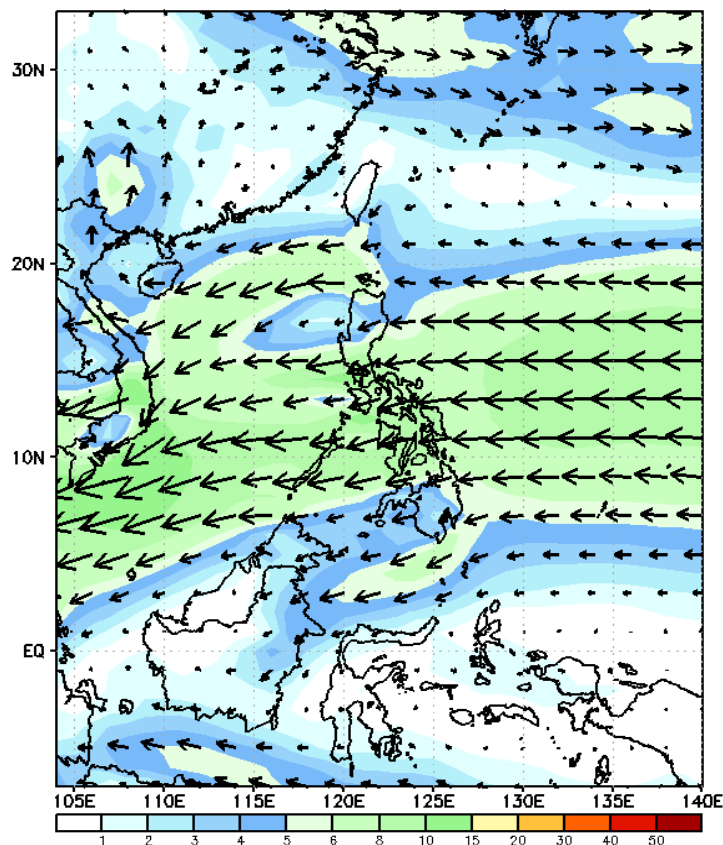
# Week 1 & Week 2 Forecast for the Philippines using GEFS Model



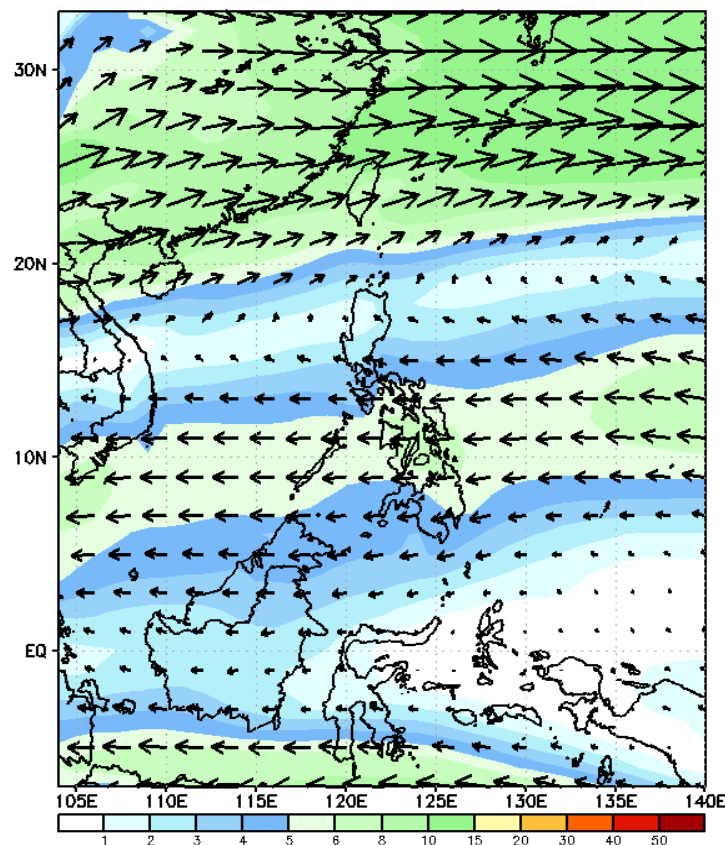
# GEFS Week-1 Forecasts: Wind Forecast

Week 1: Dec 27, 2023- Jan 02, 2024

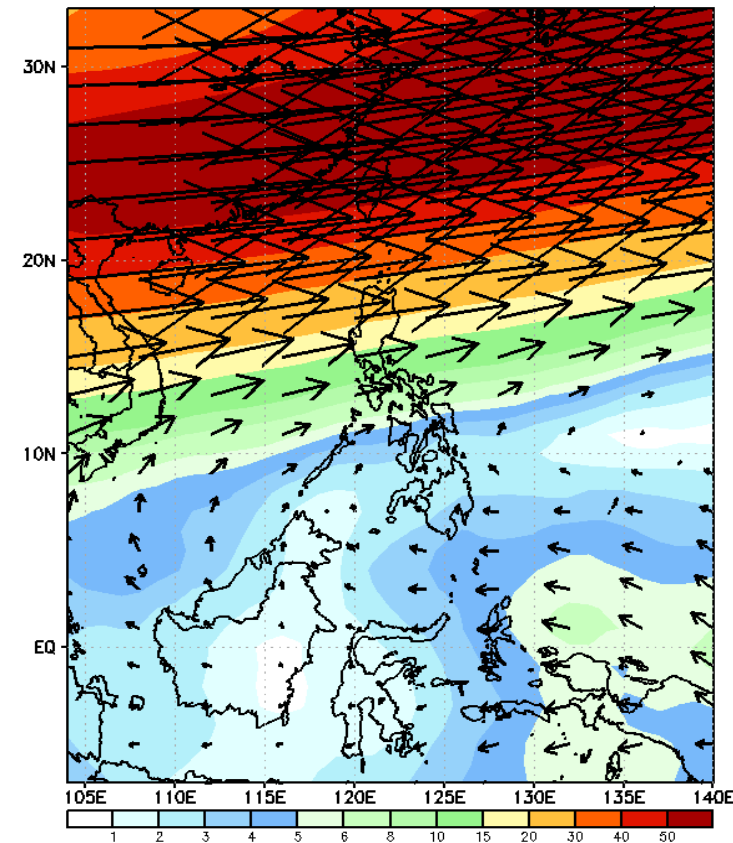
GEFS Week-1 850-hPa Wind Total  
Valid: 20231227 - 20240102



GEFS Week-1 700-hPa Wind Total  
Valid: 20231227 - 20240102

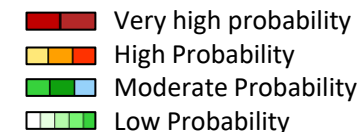


GEFS Week-1 200-hPa Wind Total  
Valid: 20231227 - 20240102



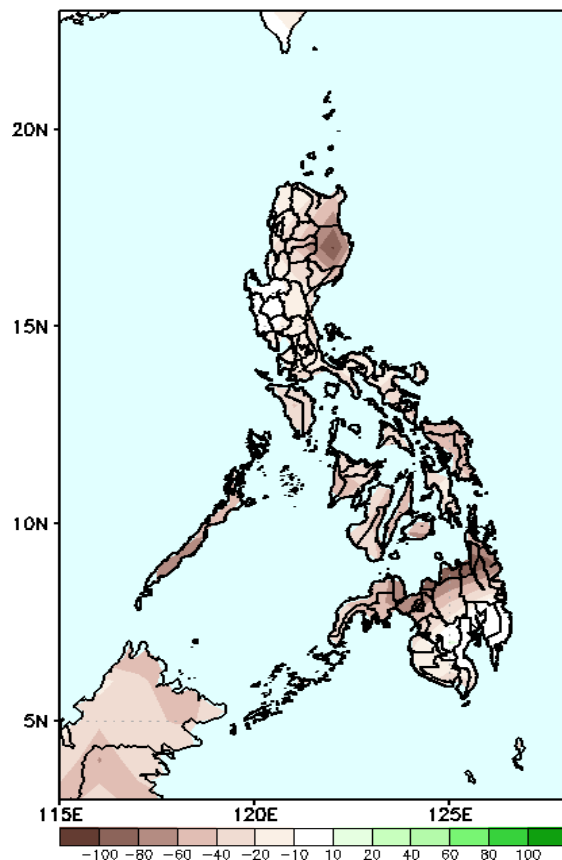
Easterlies affecting most parts of the country.

# Precipitation Anomaly and Exceedance Probability > 25/50 mm



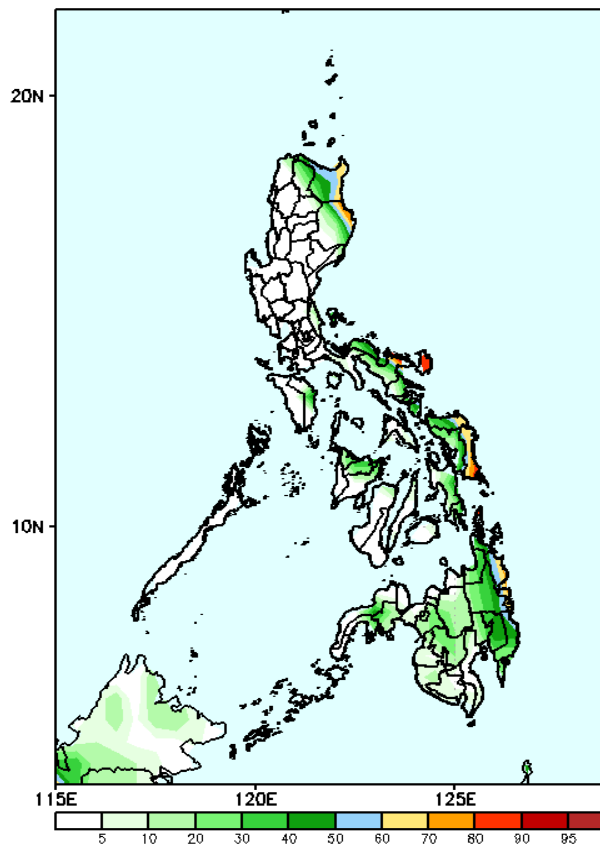
Week 1: Dec 27, 2023- Jan 02, 2024

GEFS Week-1 Precip. Anomaly  
Valid: 20231227 - 20240102



Rainfall deficit of 40-80mm in most parts of the country; while a deficit of 100mm is forecasted in Misamis Oriental, Agusan del Norte and Surigao del Norte.

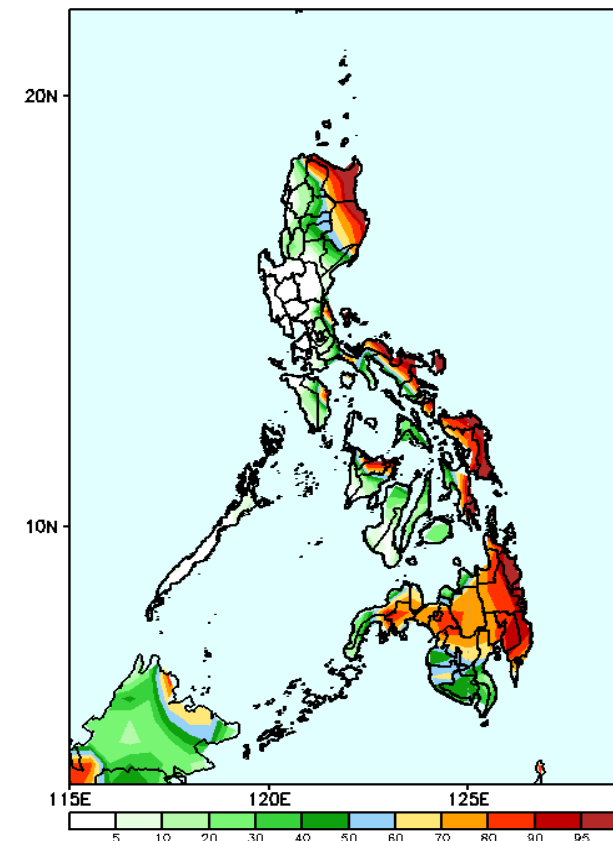
GEFS Week-1 Exceedance Prob. > 50mm  
Valid: 20231227 - 20240102



## Probability to Exceed 50mm

- High to very high over Cagayan, Isabela, and the eastern sections of Bicol Region, Visayas, and Mindanao;
- Moderate to high over the rest of Bicol Region, the eastern section of Quezon, Marinduque, Romblon, Aklan, Capiz, Oriental Mindoro, and the rest of Mindanao;
- Low to moderate over the rest of the country.

GEFS Week-1 Exceedance Prob. > 25mm  
Valid: 20231227 - 20240102

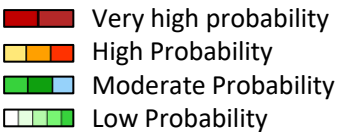


## Probability to Exceed 25mm

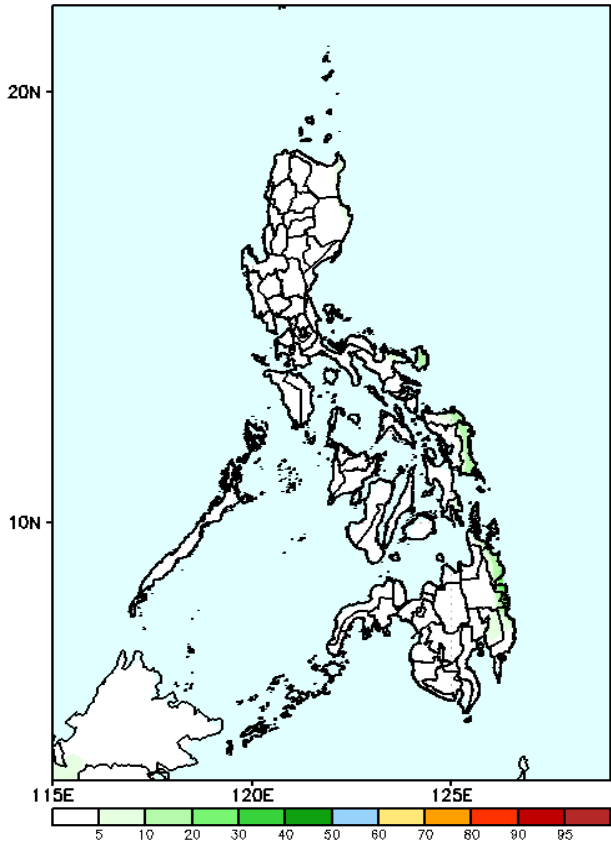
- Moderate to high over the eastern sections of Cagayan, Isabela, Bicol Region, Samar Provinces, and Caraga;
- Low over the rest of the country.

# Exceedance Probability > 100/150/200 mm

Week 1: Dec 27, 2023- Jan 02, 2024

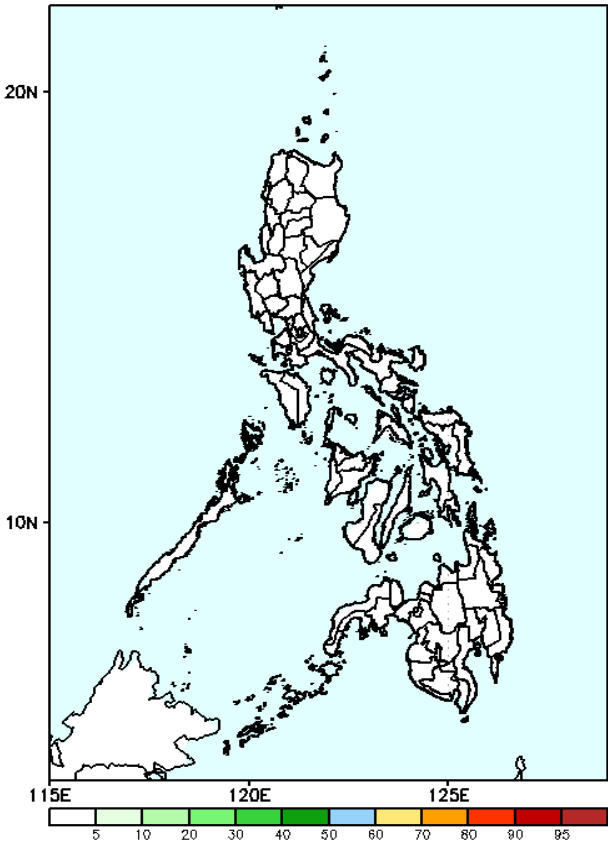


GEFS Week-1 Exceedance Prob. > 100mm  
Valid: 20231227 - 20240102



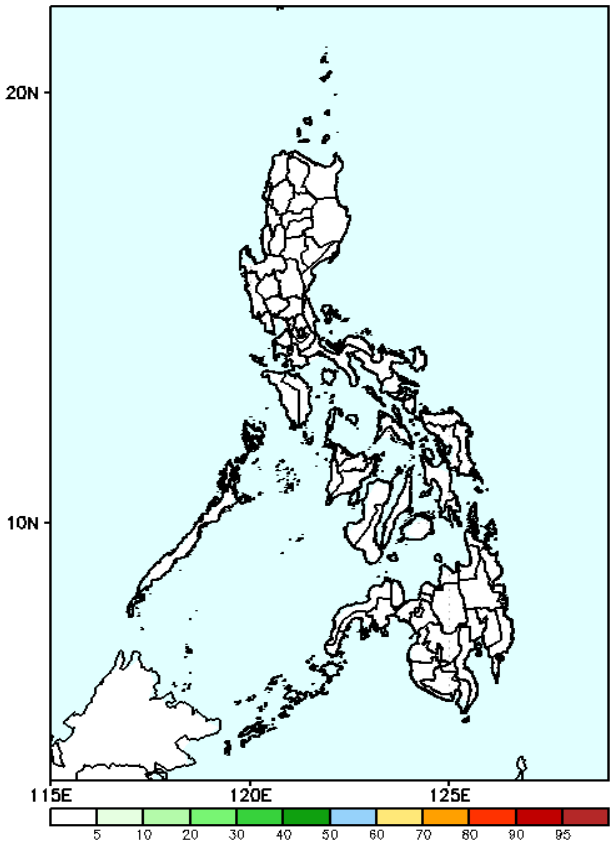
**Probability to Exceed 100mm**  
• Low across the country.

GEFS Week-1 Exceedance Prob. > 150mm  
Valid: 20231227 - 20240102



**Probability to Exceed 150mm**  
• Low across the country.

GEFS Week-1 Exceedance Prob. > 200mm  
Valid: 20231227 - 20240102

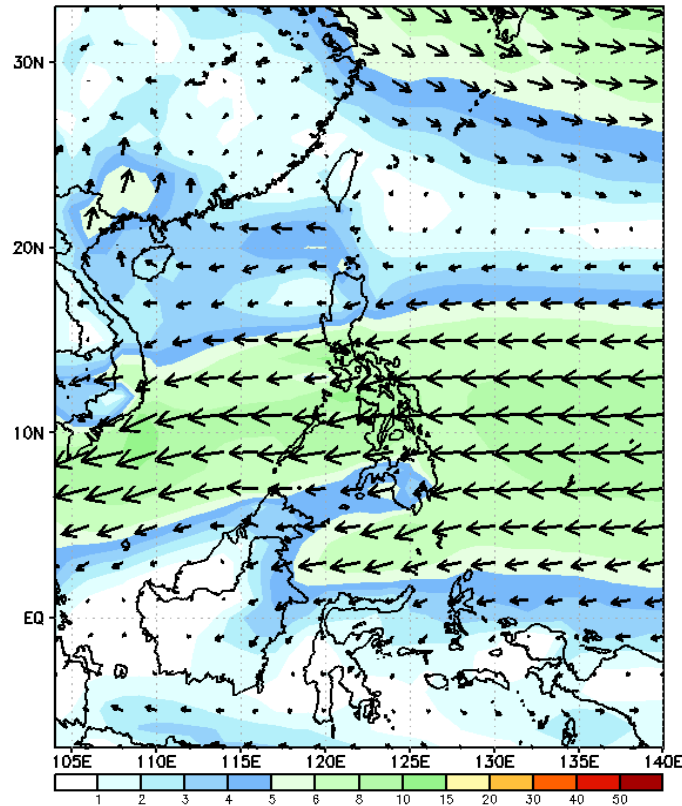


**Probability to Exceed 200mm**  
• Low across the country.

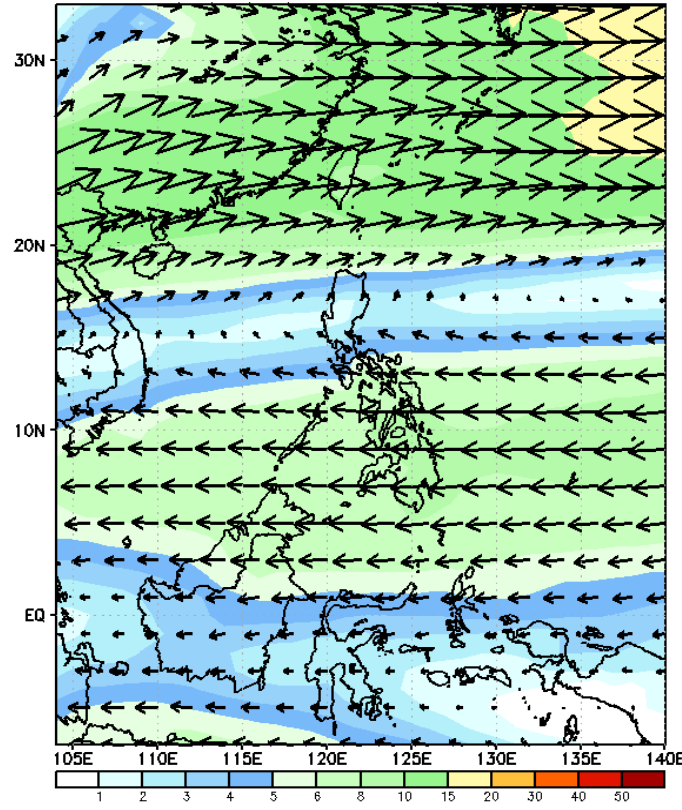
# GEFS Week-2 Forecasts: Wind Forecast

Week 2: Jan 03-09, 2024

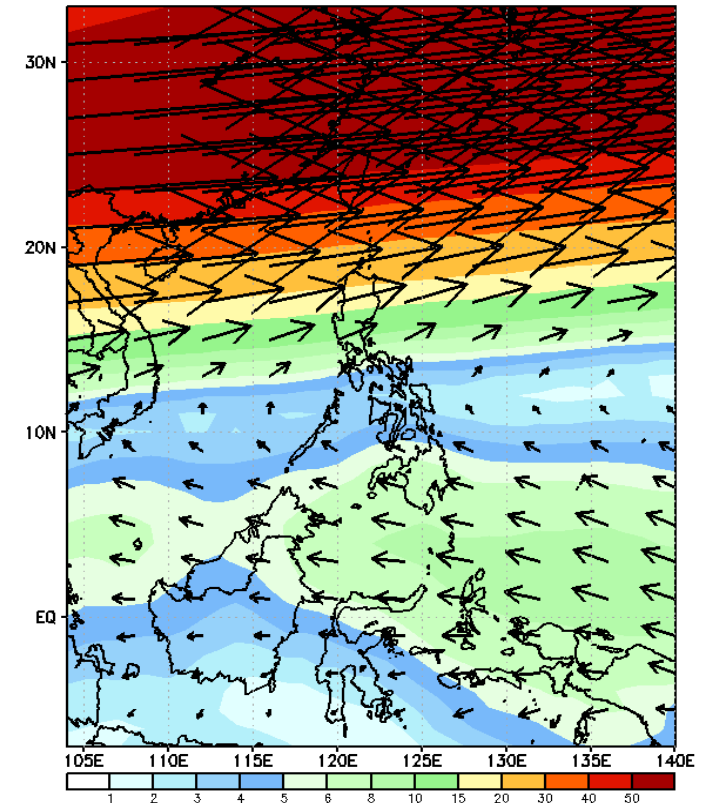
GEFS Week-2 850-hPa Wind Total  
Valid: 20240103 - 20240109



GEFS Week-2 700-hPa Wind Total  
Valid: 20240103 - 20240109



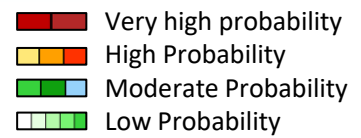
GEFS Week-2 200-hPa Wind Total  
Valid: 20240103 - 20240109



Northeast Monsoon affecting Northern Luzon; Easterlies affecting the rest of the country.

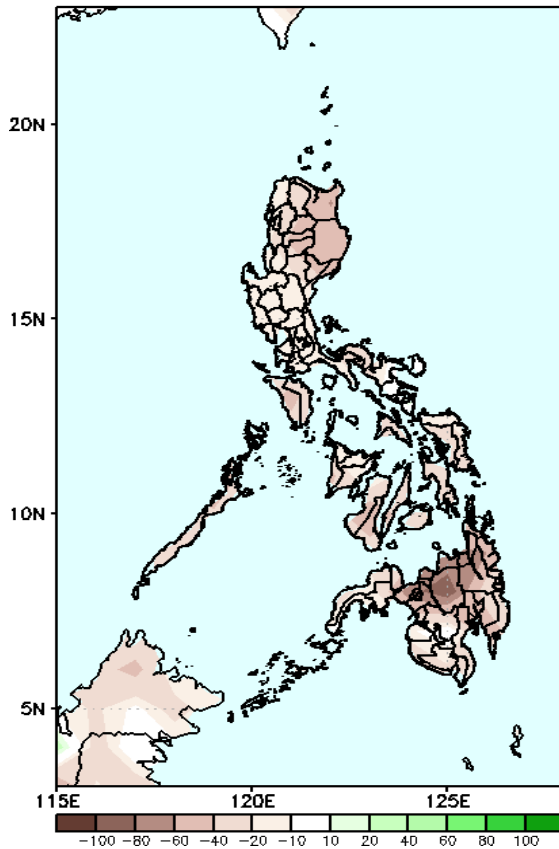


# Precipitation Anomaly and Exceedance Probability > 25/50 mm



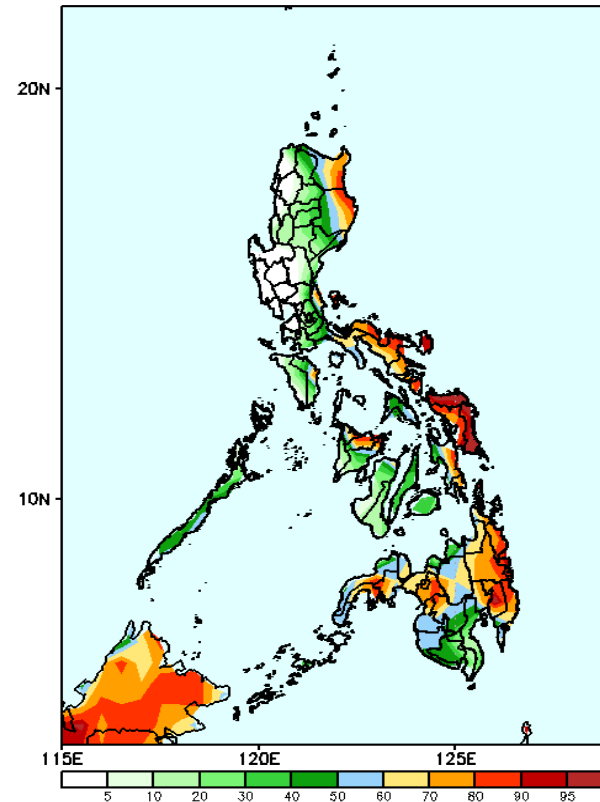
Week 2: Jan 03-09, 2024

GEFS Week-2 Precip Anomaly  
Valid: 20240103 - 20240109



Rainfall deficit of 40-60mm in most parts of the country; while a deficit of 60-80mm is forecasted in most parts of Northern Mindanao.

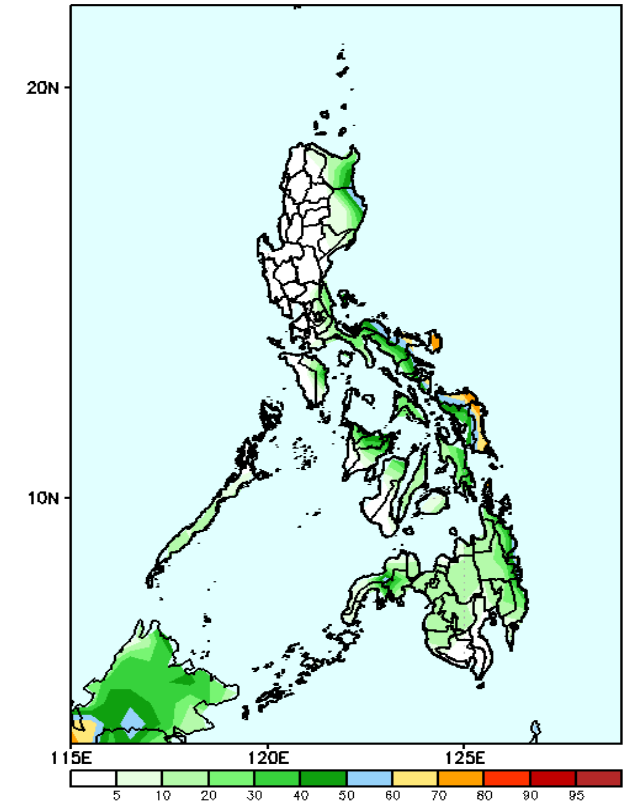
GEFS Week-2 Exceedance Prob. > 25mm  
Valid: 20240103 - 20240109



## Probability to Exceed 25mm

- High to very high over the eastern sections of Cagayan and Isabela, Bicol Region, Samar Provinces;
- Moderate to high over, Quezon, Marinduque, Romblon, Aklan, Capiz, Oriental Mindoro, Leyte provinces, and the rest of Mindanao;
- Low over the rest of the country.

GEFS Week-2 Exceedance Prob. > 50mm  
Valid: 20240103 - 20240109



## Probability to Exceed 50mm

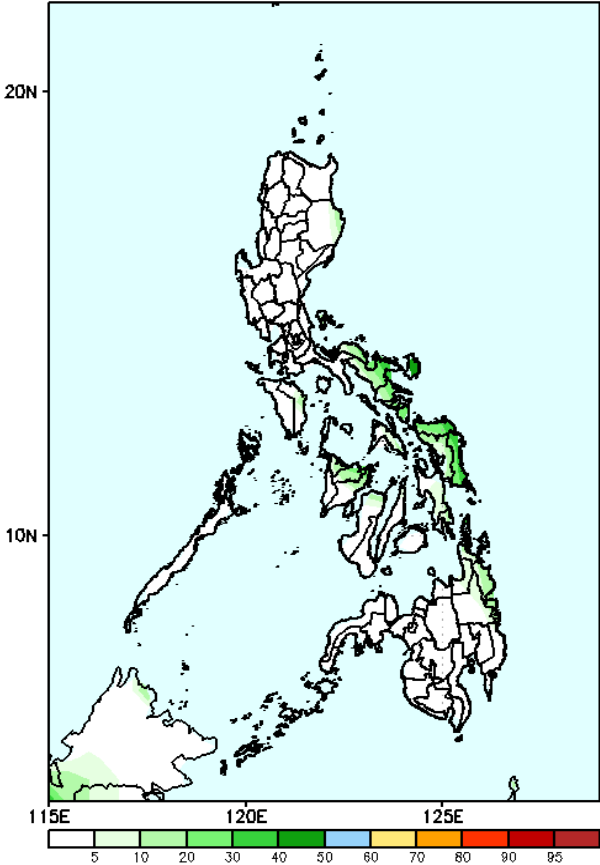
- Moderate to high over the eastern sections of the Bicol region and Samar Provinces;
- Low to moderate over eastern sections of Cagayan and Isabela, Capiz, Caraga, and Zamboanga Provinces;
- Low elsewhere.

# Exceedance Probability > 100/150/200 mm

Week 2: Jan 03-09, 2024

- Very high probability
- High Probability
- Moderate Probability
- Low Probability

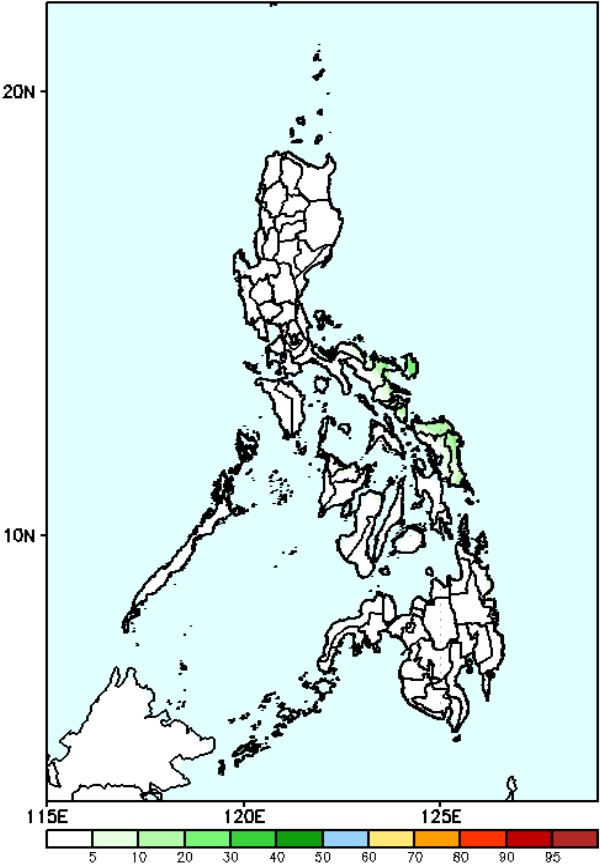
GEFS Week-2 Exceedance Prob. > 100mm  
Valid: 20240103 – 20240109



Probability to Exceed 100mm

- Low across the country.

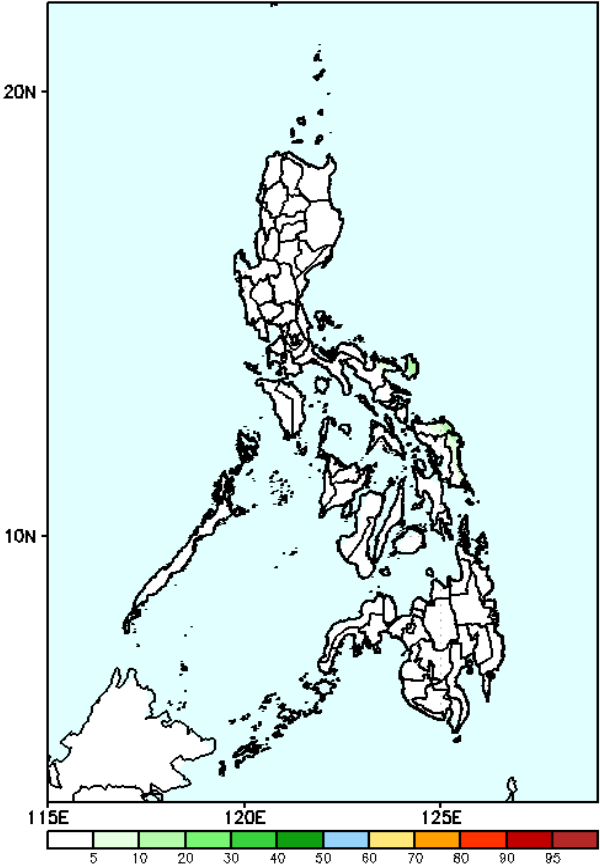
GEFS Week-2 Exceedance Prob. > 150mm  
Valid: 20240103 – 20240109



Probability to Exceed 150mm

- Low across the country.

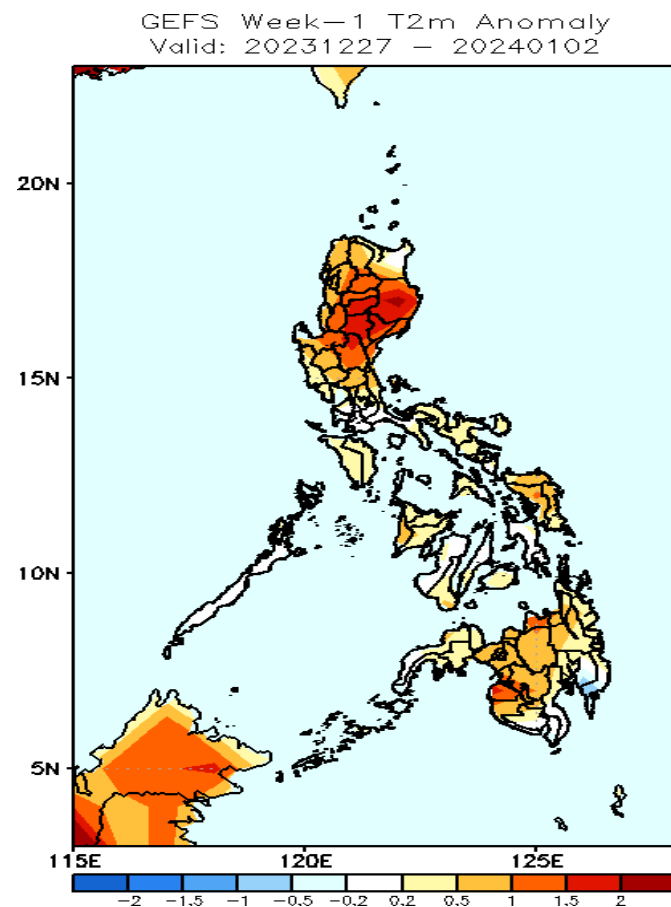
GEFS Week-2 Exceedance Prob. > 200mm  
Valid: 20240103 – 20240109



Probability to Exceed 200mm

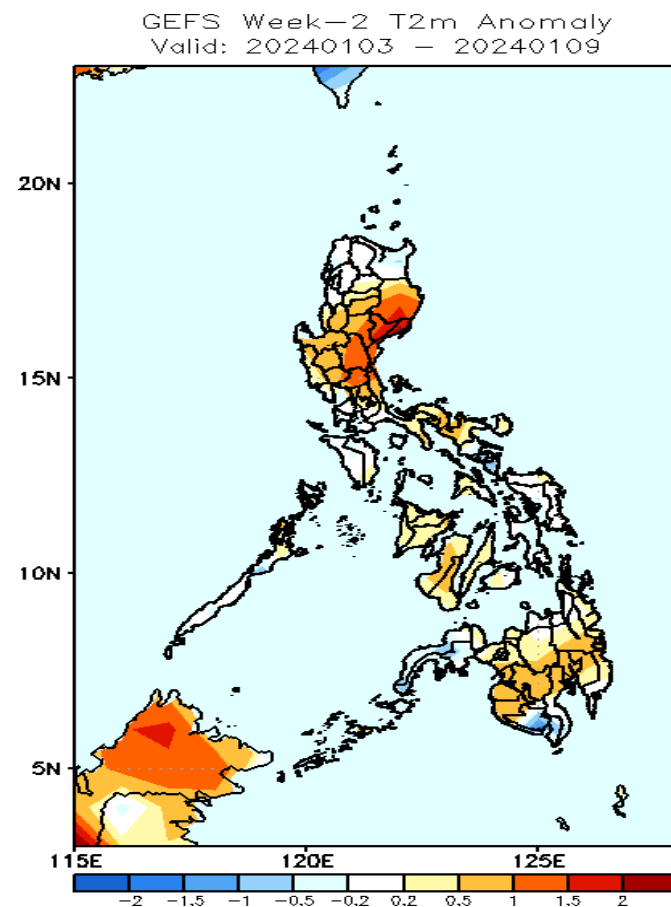
- Low across the country.

# GEFS Week-1 & 2 Forecasts: T2m Anomaly



## 2m Temperature Week 1: Dec 27, 2023- Jan 02, 2024

Slightly warmer to warmer than average surface air temperature will likely be experienced in most parts of the country.



## 2m Temperature Week 2: Jan 03-09, 2024

Average to warmer than average surface air temperature will likely be experienced in most parts of the country.