



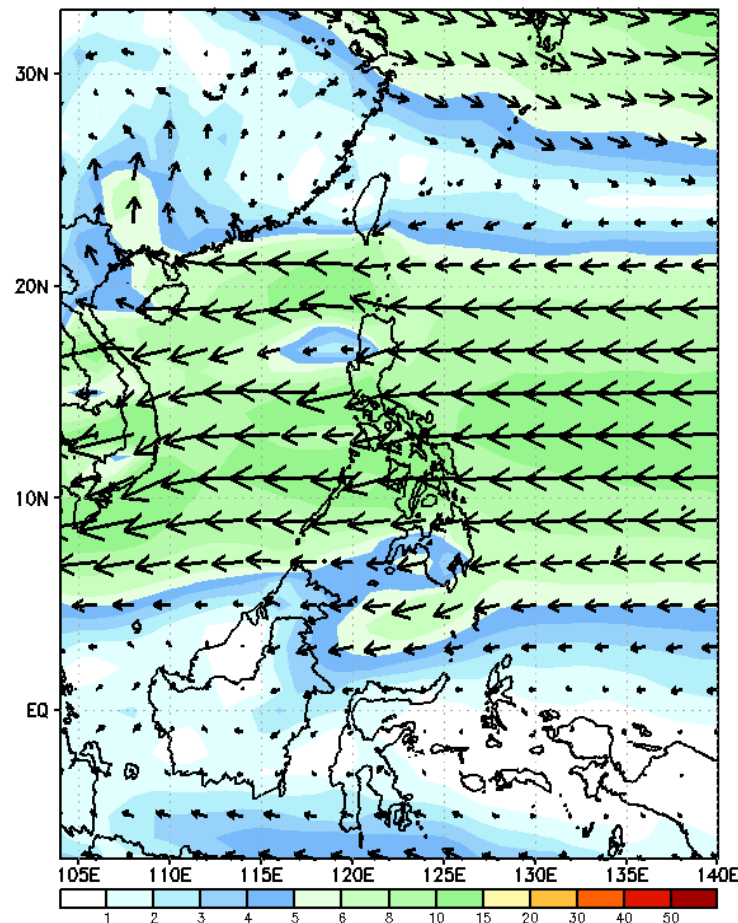
Week 1 & Week 2 Forecast for the Philippines using GEFS Model



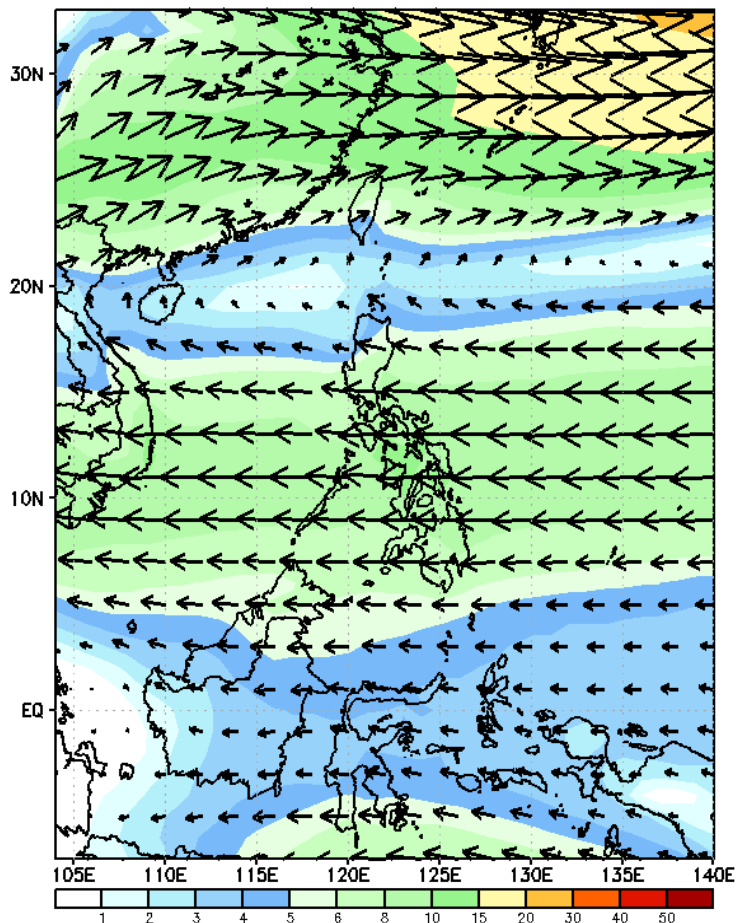
GEFS Week-1 Forecasts: Wind Forecast

Week 1: Nov 28- Dec 04, 2023

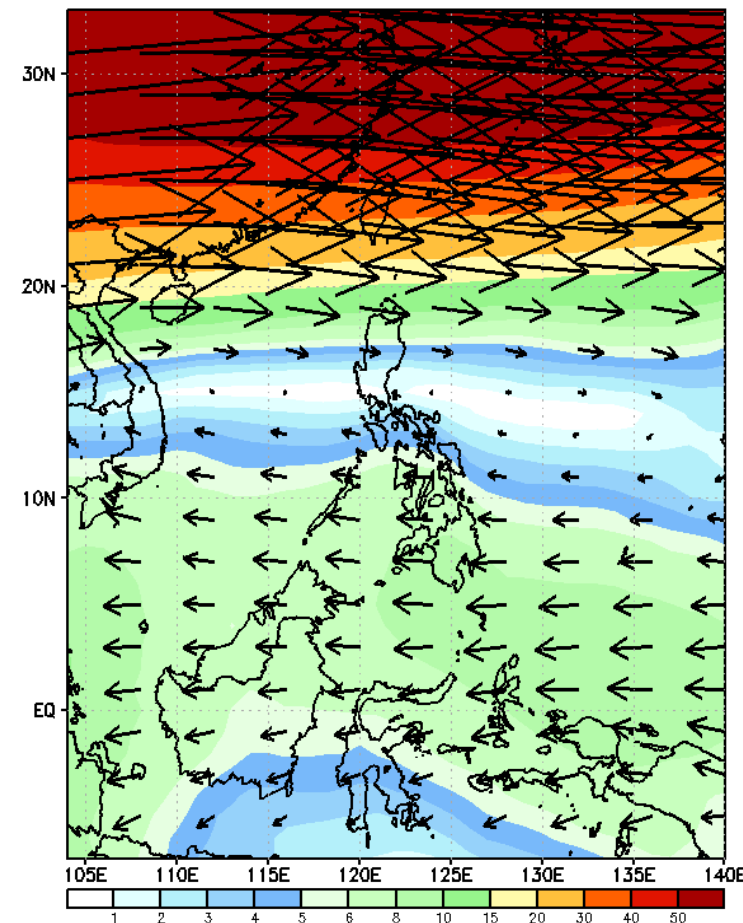
GEFS Week-1 850-hPa Wind Total
Valid: 20231128 - 20231204



GEFS Week-1 700-hPa Wind Total
Valid: 20231128 - 20231204

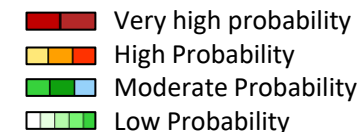


GEFS Week-1 200-hPa Wind Total
Valid: 20231128 - 20231204



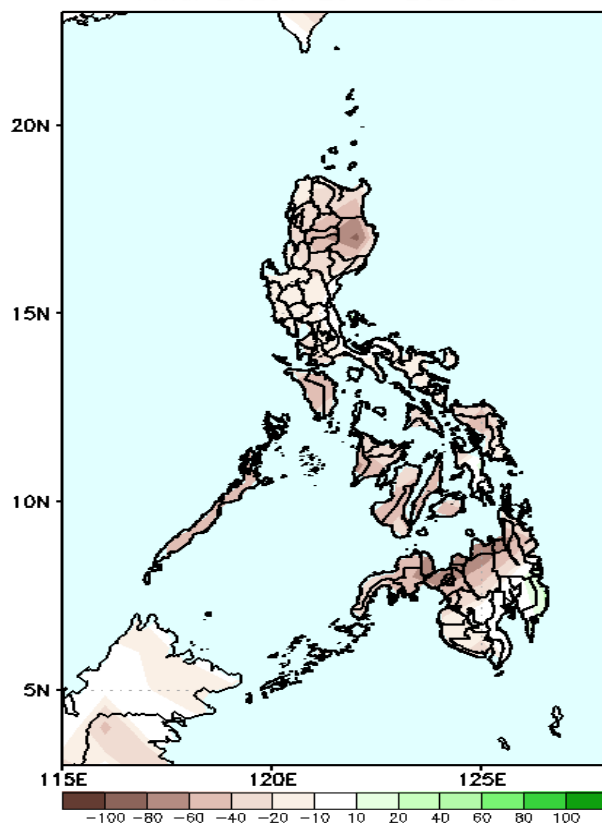
Easterlies affecting most parts of the country.

Precipitation Anomaly and Exceedance Probability > 25/50 mm



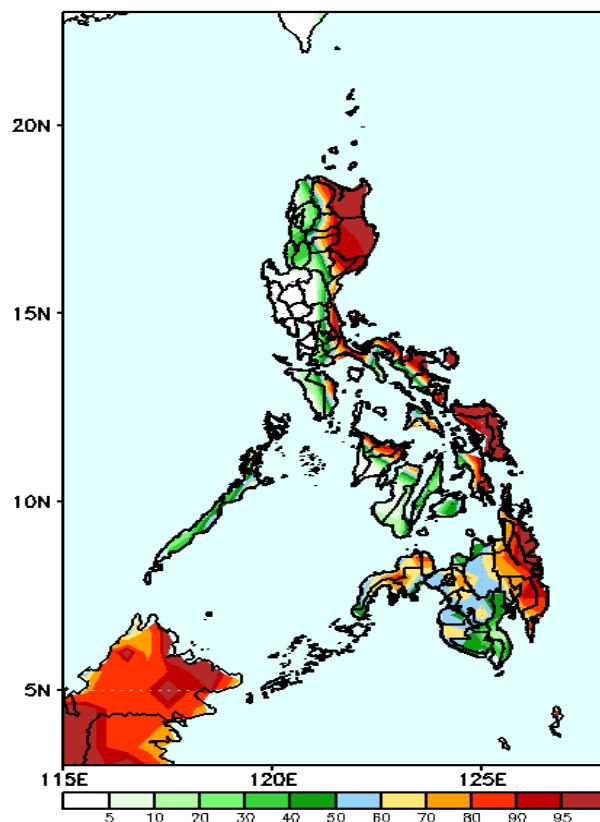
Week 1: Nov 28- Dec 04, 2023

GEFS Week-1 Precip Anomaly
Valid: 20231128 - 20231204



Rainfall deficit of 10-40mm is expected in most parts of Luzon and southern Mindanao while 40-100mm will be likely Mindoro, Palawan, Visayas, and the rest of Mindanao.

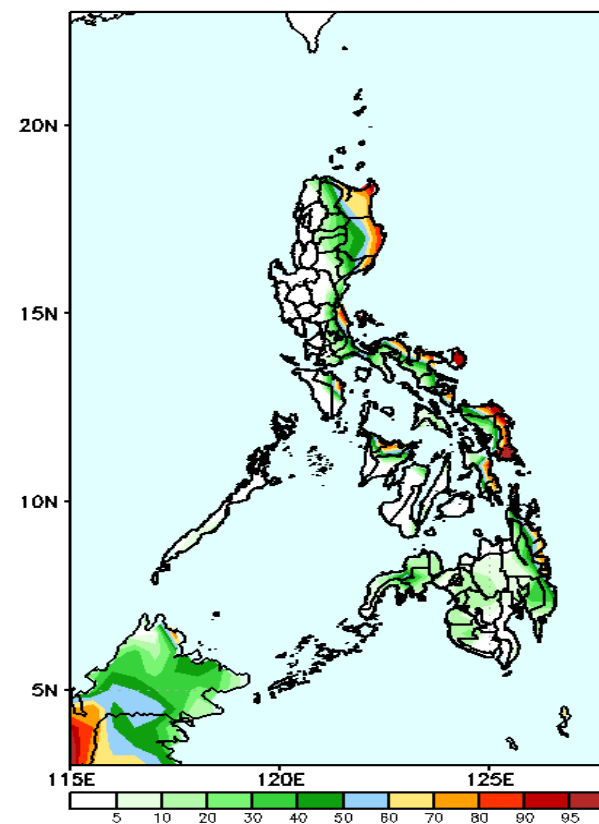
GEFS Week-1 Exceedance Prob. > 25mm
Valid: 20231128 - 20231204



Probability to Exceed 25mm

- High to very high over eastern sections of the country;
- Moderate to high over Quezon and the southern part of Bicol region, Palawan, northern part of Western Visayas, Leyte provinces and the rest of Mindanao;
- Low to moderate over the rest of Luzon and Visayas.

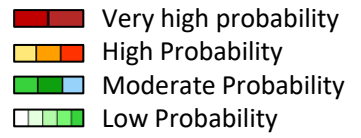
GEFS Week-1 Exceedance Prob. > 50mm
Valid: 20231128 - 20231204



Probability to Exceed 50mm

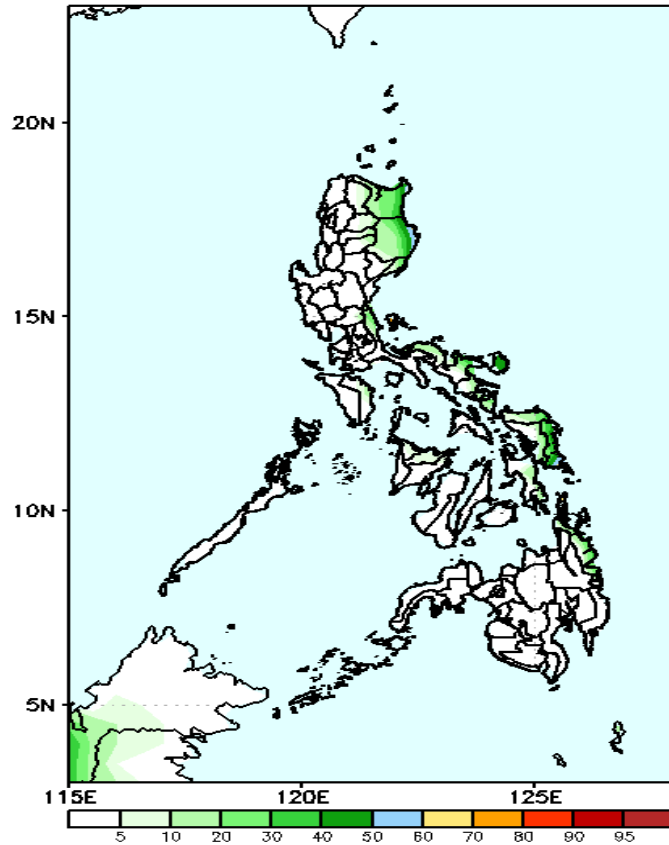
- Moderate to high over Cagayan, eastern part of Isabela, Northern Quezon, Eastern Visayas, Aklan, Capiz, and Surigao provinces;
- Low to moderate elsewhere.

Exceedance Probability > 100/150/200 mm



Week 1: Nov 28- Dec 04, 2023

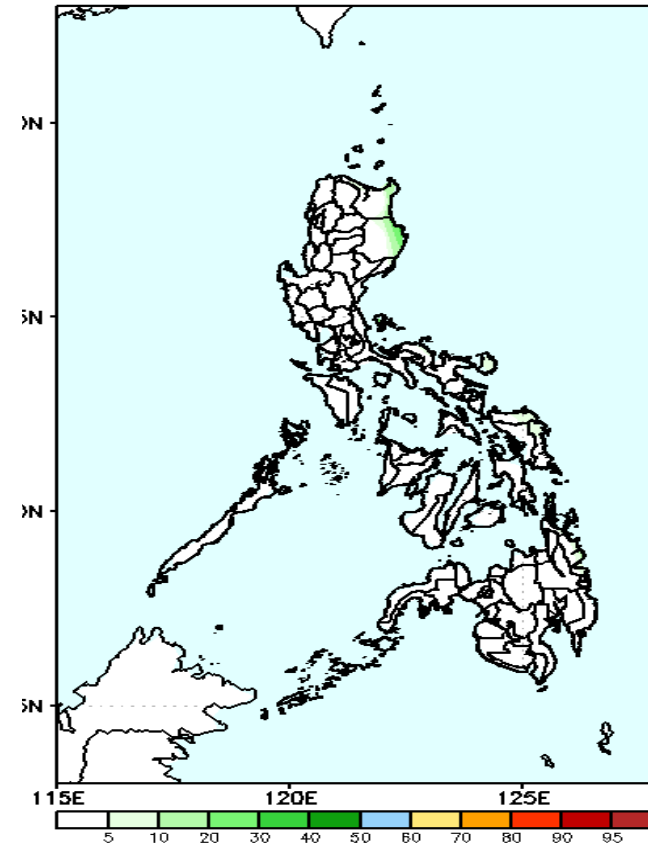
GEFS Week-1 Exceedance Prob. > 100mm
Valid: 20231128 - 20231204



Probability to Exceed 100mm

- Low over most parts of the country.

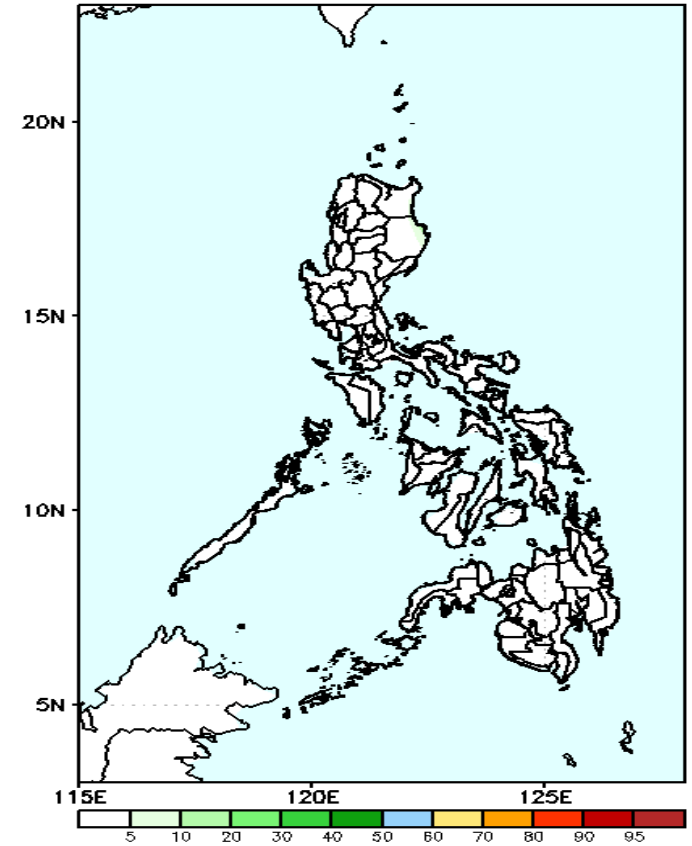
GEFS Week-1 Exceedance Prob. > 150
Valid: 20231128 - 20231204



Probability to Exceed 150mm

- Low over most parts of the country.

GEFS Week-1 Exceedance Prob. > 200mm
Valid: 20231128 - 20231204



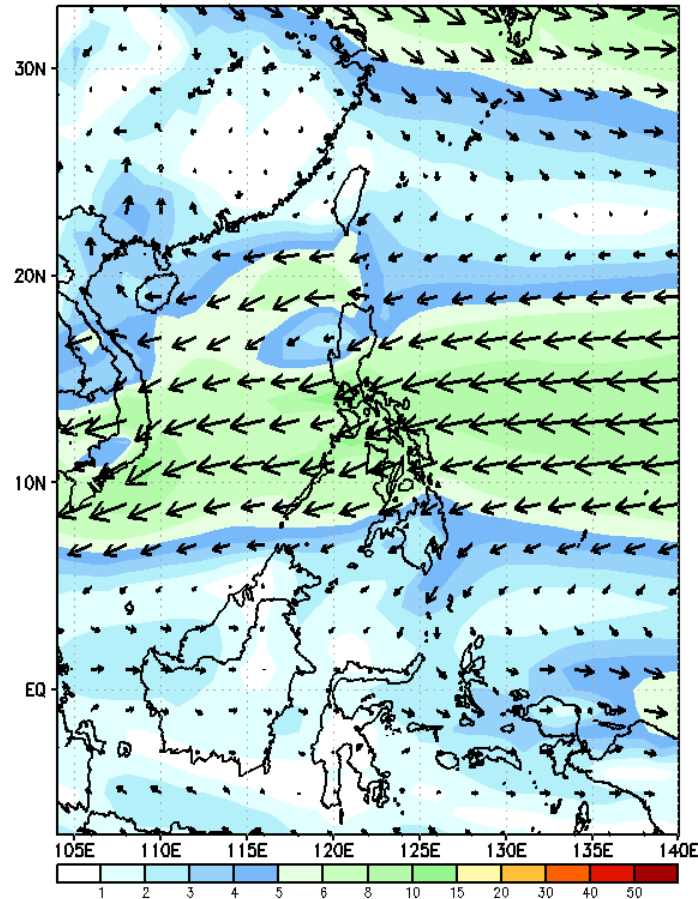
Probability to Exceed 200mm

- Low in most parts of the country.

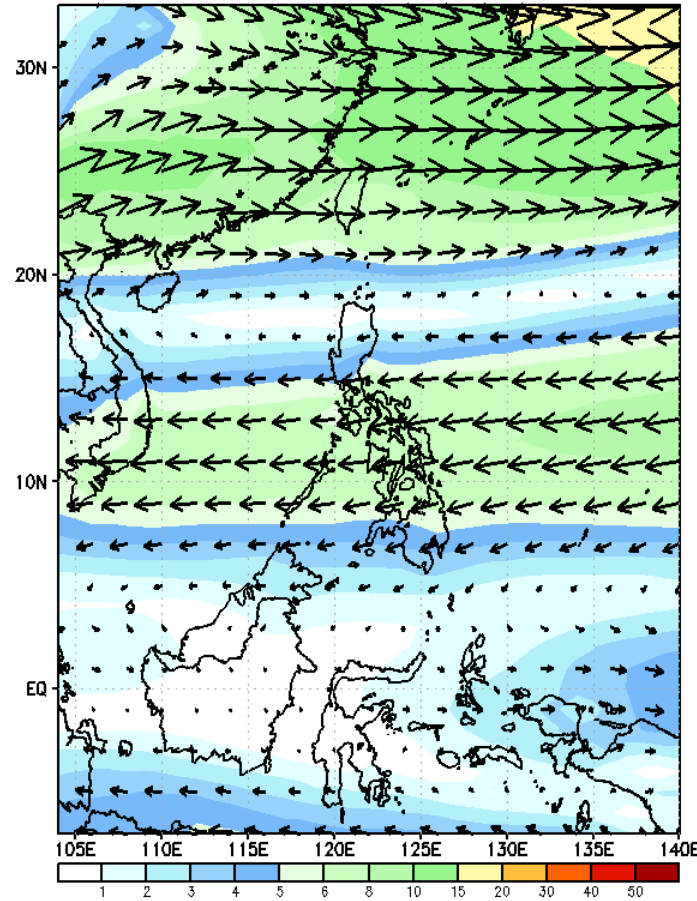
GEFS Week-2 Forecasts: Wind Forecast

Week 2: Dec 05-11, 2023

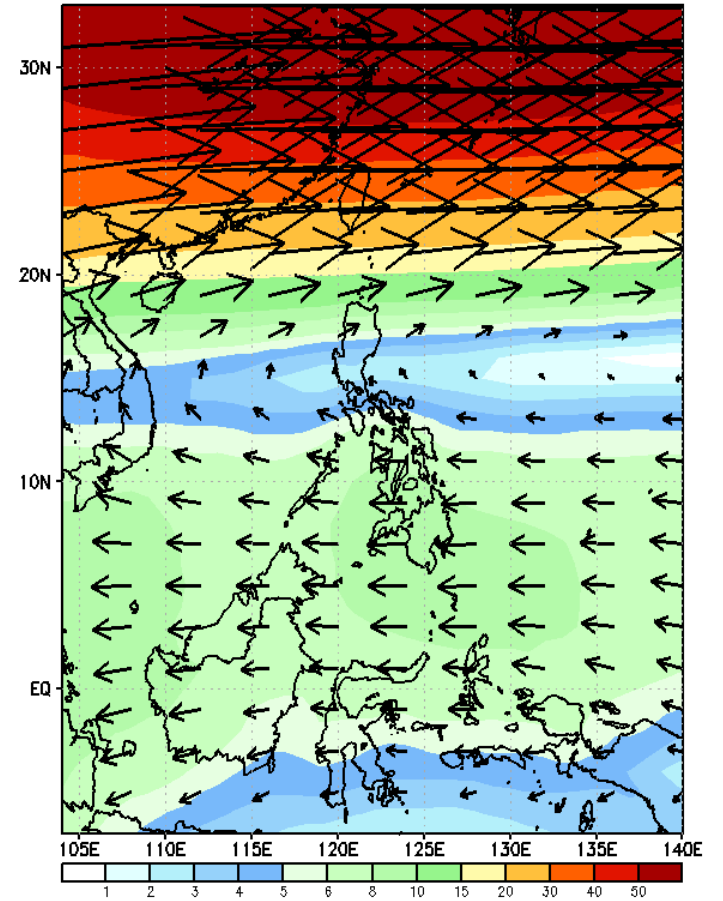
GEFS Week-2 850-hPa Wind Total
Valid: 20231205 - 20231211



GEFS Week-2 700-hPa Wind Total
Valid: 20231205 - 20231211

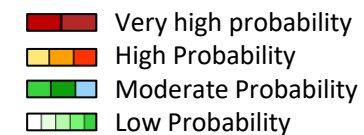


GEFS Week-2 200-hPa Wind Total
Valid: 20231205 - 20231211

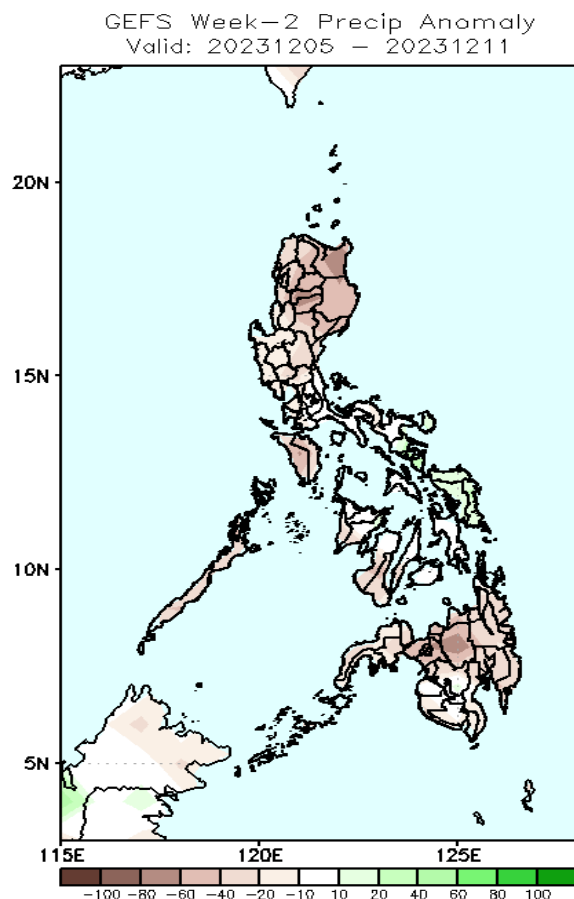


Northeast Monsoon affecting Northern Luzon. Easterlies affecting the rest of the country.

Precipitation Anomaly and Exceedance Probability > 25/50 mm

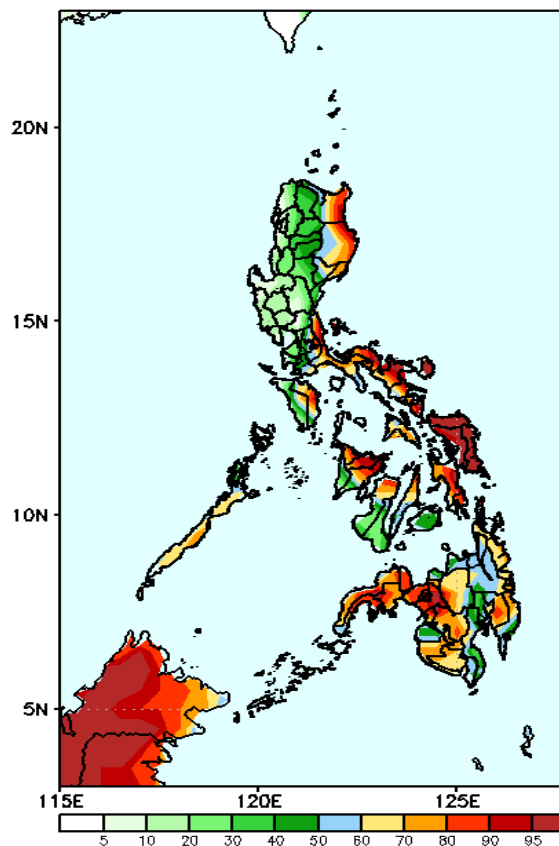


Week 2: Dec 05-11, 2023



Rainfall deficit of 20-80mm is expected in most parts of the country.

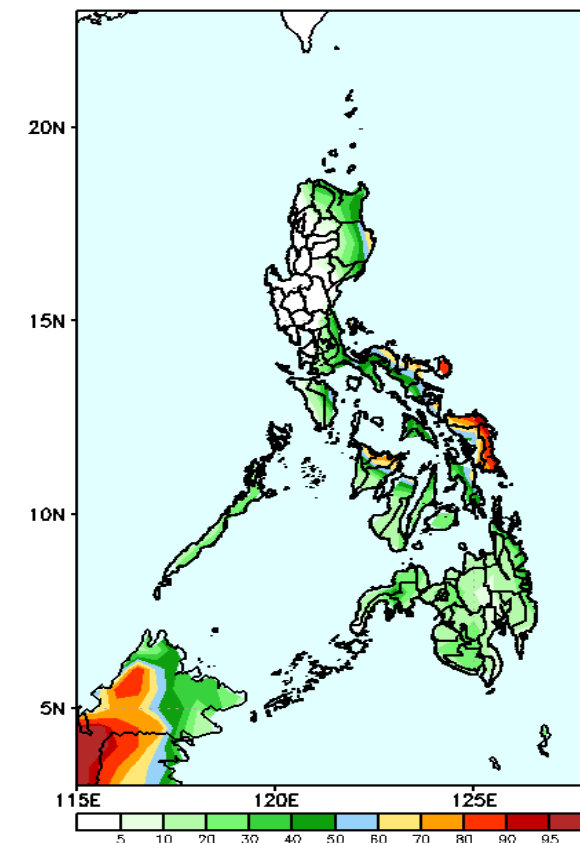
GEFS Week-2 Exceedance Prob. > 25mm
Valid: 20231205 - 20231211



Probability to Exceed 25mm

- High to very high over Bicol region, Eastern Visayas and northern portion of Western Visayas;
- Moderate to high over most parts of Cagayan Valley, Quezon, Palawan and the rest of Visayas and Mindanao;
- Low to moderate over the rest of Luzon.

GEFS Week-2 Exceedance Prob. > 50mm
Valid: 20231205 - 20231211



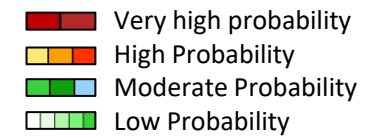
Probability to Exceed 50mm

- Moderate to high over the eastern part of Isabela, Quezon, Bicol Region, Eastern Visayas, northern part of Western Visayas;
- Low to moderate elsewhere.

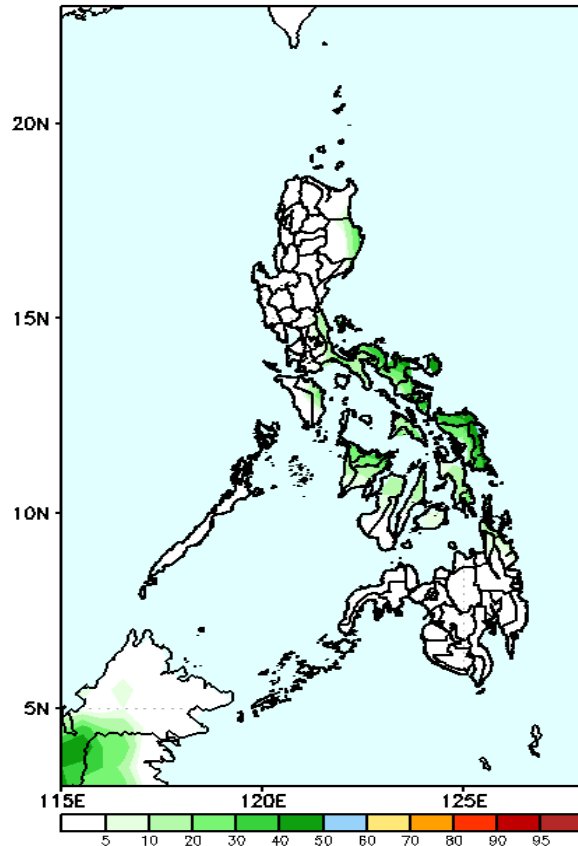


Exceedance Probability > 100/150/200 mm

Week 2: Dec 05-11, 2023



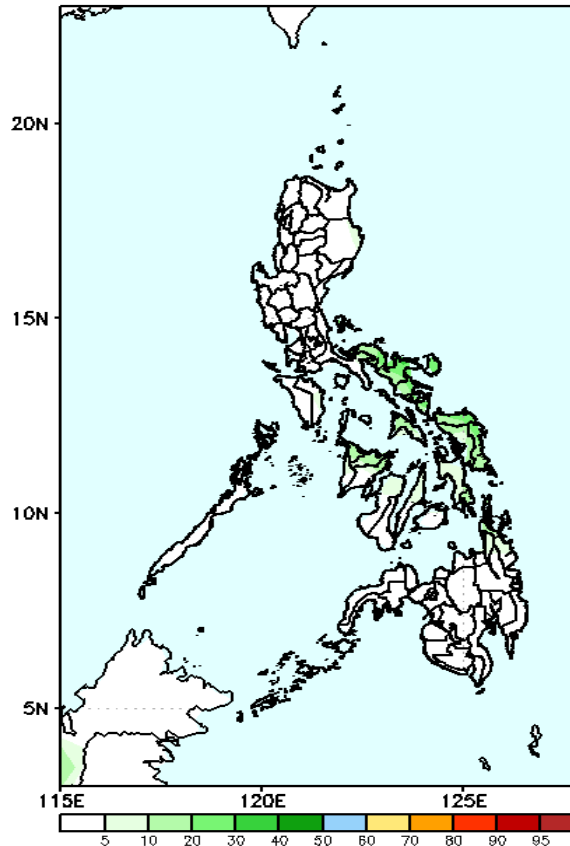
GEFS Week-2 Exceedance Prob. > 100mm
Valid: 20231205 - 20231211



Probability to Exceed 100mm

- Low to moderate over Bicol Region and Eastern Visayas;
- Low elsewhere.

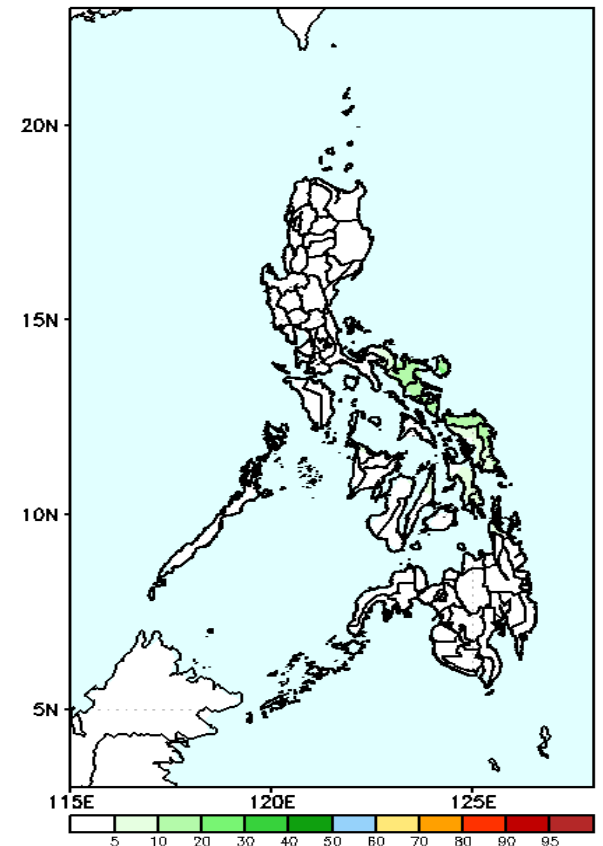
GEFS Week-2 Exceedance Prob. > 150mm
Valid: 20231205 - 20231211



Probability to Exceed 150mm

- Low in most parts of the country.

GEFS Week-2 Exceedance Prob. > 200mm
Valid: 20231205 - 20231211

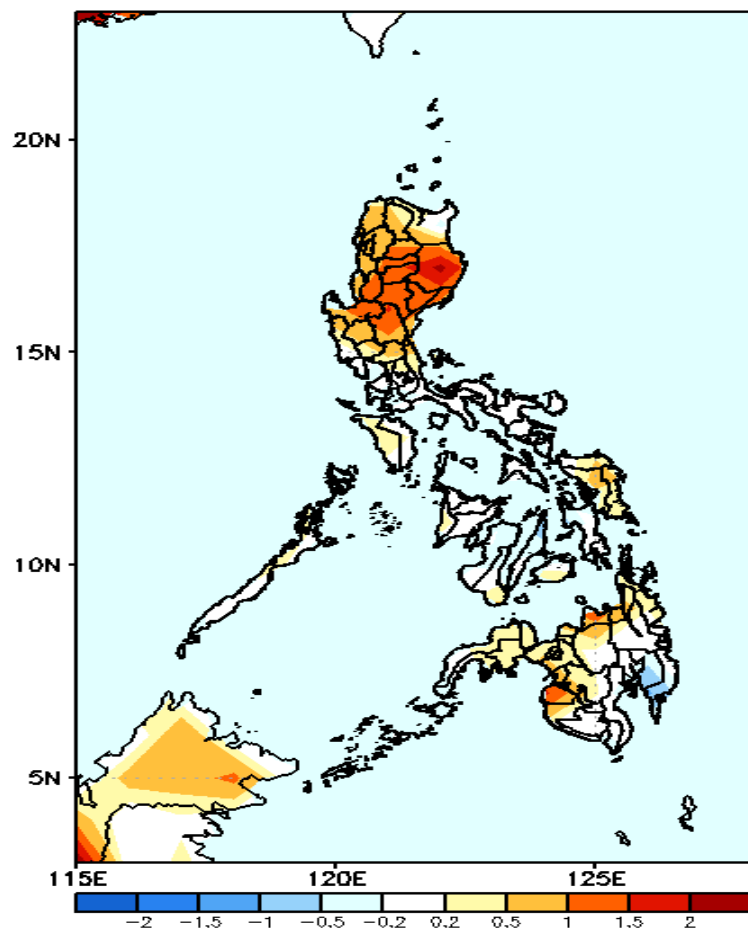


Probability to Exceed 200mm

- Low in most parts of the country.

GEFS Week-1 & 2 Forecasts: T2m Anomaly

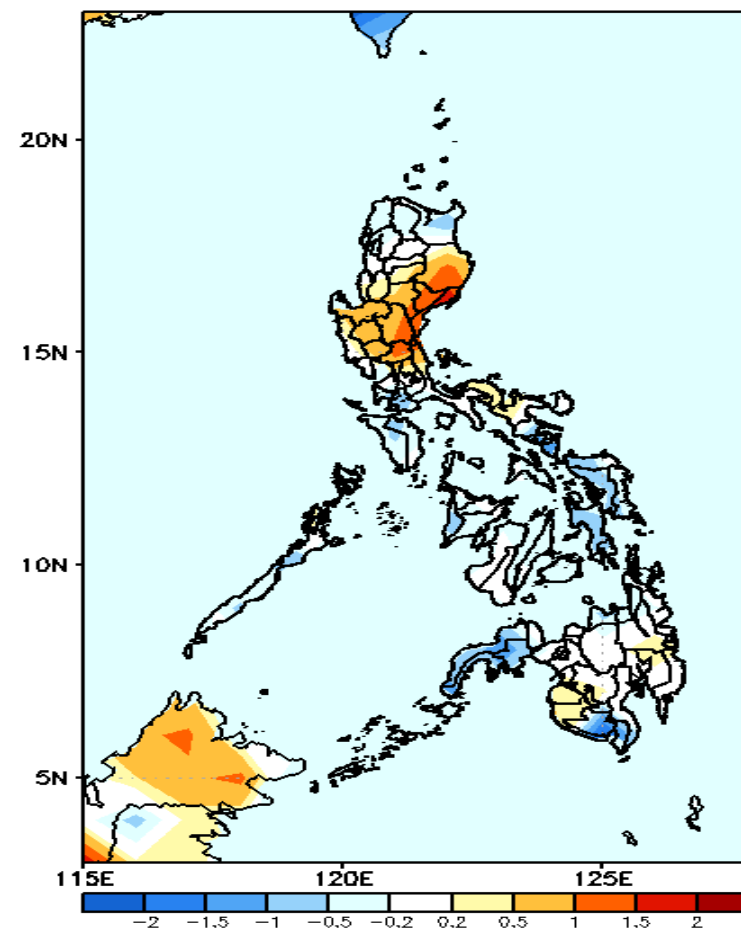
GEFS Week-1 T2m Anomaly
Valid: 20231128 - 20231204



2m Temperature Week 1: Nov 28- Dec 04, 2023

Average to warmer than average surface air temperature will likely be experienced in most parts of the country except in Davao de Oro and Davao Oriental where slightly cooler than average temperature is expected.

GEFS Week-2 T2m Anomaly
Valid: 20231205 - 20231211



2m Temperature Week 2: Dec 05-11, 2023

Average to warmer than average surface air temperature will likely be experienced in most parts of Luzon while average to cooler than average surface air temperature will likely be experienced in Visayas and Mindanao.