



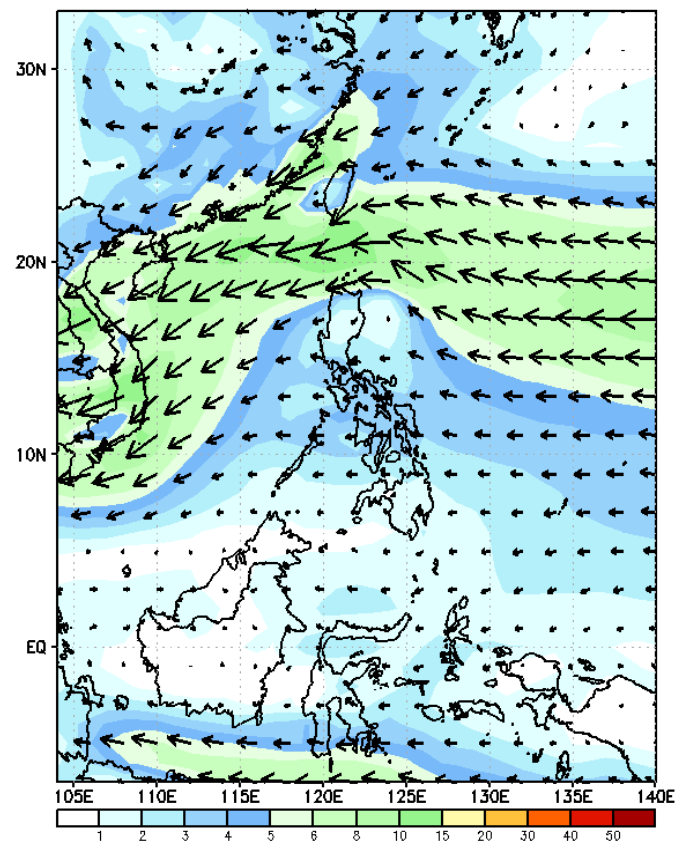
# Week 1 & Week 2 Forecast for the Philippines using GEFS Model



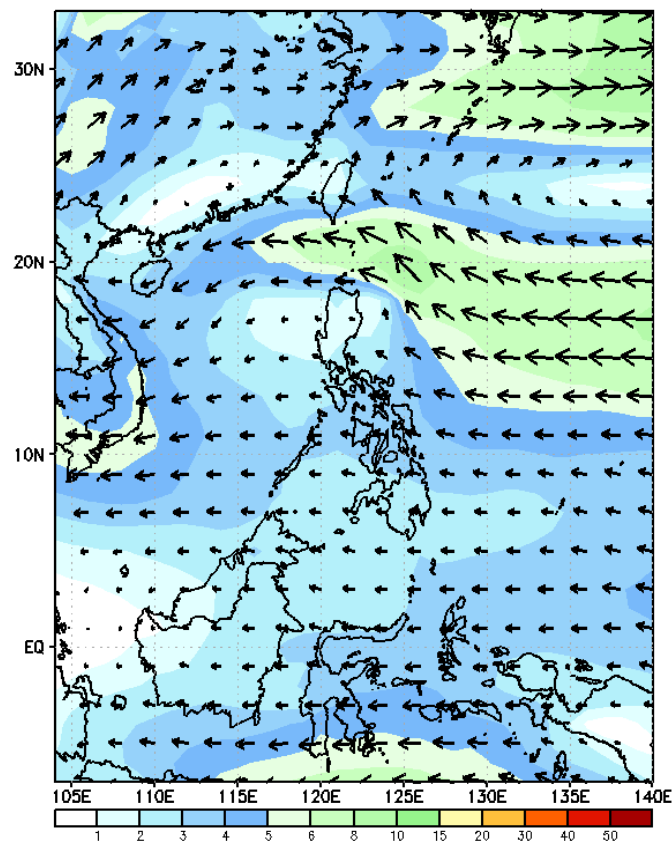
# GEFS Week-1 Wind Forecasts:

Week 1: Nov 04-10, 2024

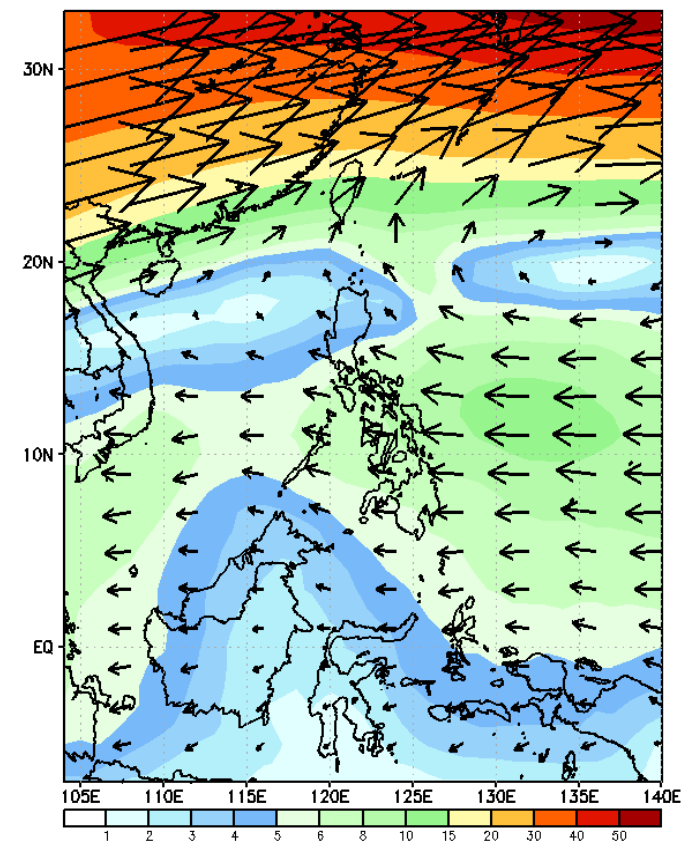
GEFS Week-1 850-hPa Wind Total  
Valid: 20241106 - 20241112



GEFS Week-1 700-hPa Wind Total  
Valid: 20241106 - 20241112



GEFS Week-1 200-hPa Wind Total  
Valid: 20241106 - 20241112



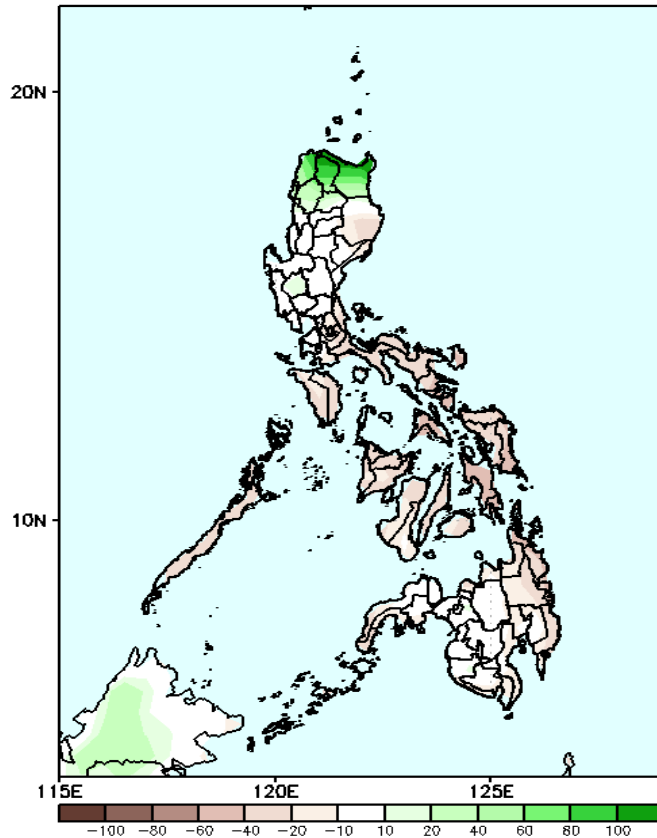
Northeasterly windflow affecting Northern Luzon; Easterlies affecting the rest of the country

# Precipitation Anomaly and Exceedance Probability > 25/50 mm



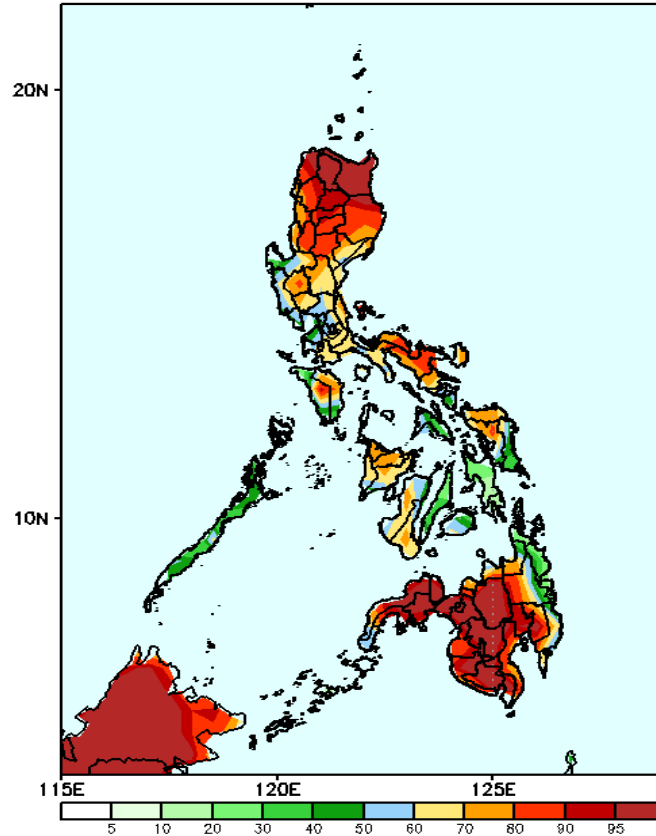
Week 1: Nov 04-10, 2024

GEFS Week-1 Precip Anomaly  
Valid: 20241106 – 20241112



Rainfall deficit of up to 80mm is expected in most parts of the country except Batanes, Ilocos Norte, Apayao and Cagayan where increase of rainfall of up to 80mm will be likely.

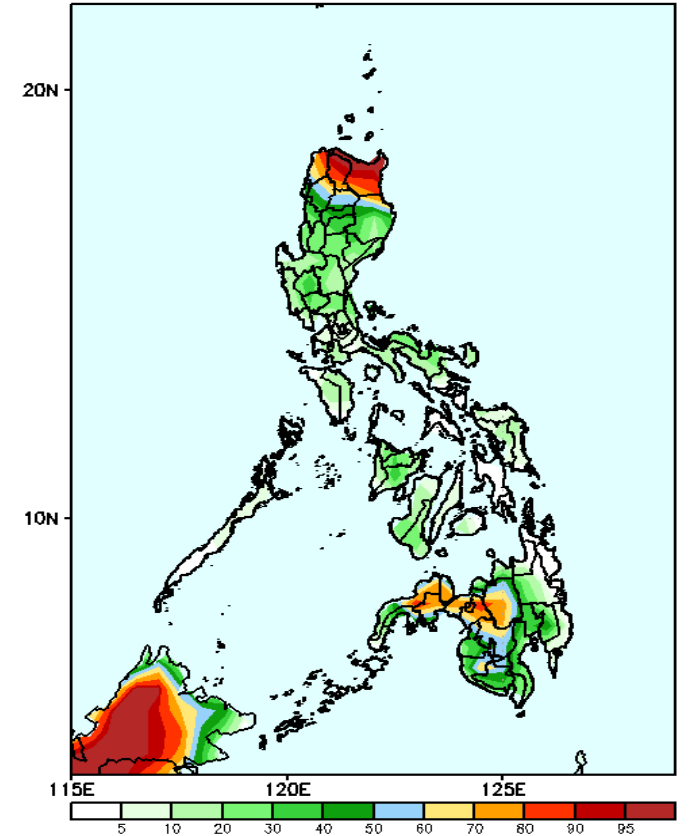
GEFS Week-1 Exceedance Prob. > 25mm  
Valid: 20241106 – 20241112



## Probability to Exceed 25mm

- High to very high over most of Northern Luzon and Mindanao;
- Moderate to high over the rest of the country.

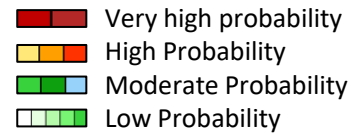
GEFS Week-1 Exceedance Prob. > 50mm  
Valid: 20241106 – 20241112



## Probability to Exceed 50mm

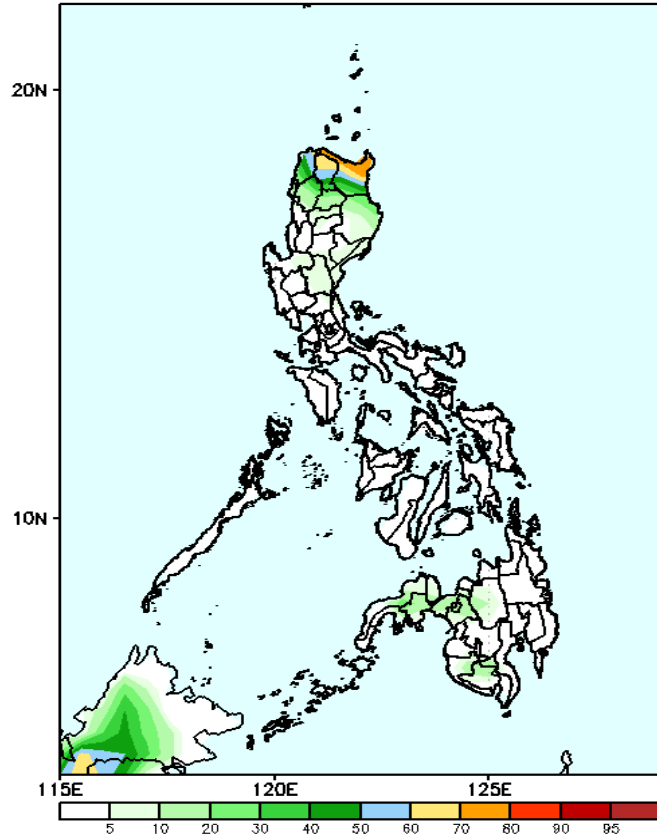
- High to very high over Batanes, Apayao and Cagayan;
- Moderate to high over Ilocos Norte, Abra, Kalinga, northern part of Isabela, Central Mindanao and Zamboanga Peninsula;
- Low to moderate over the rest of the country.

# Exceedance Probability > 100/150/200 mm



Week 1: Nov 04-10, 2024

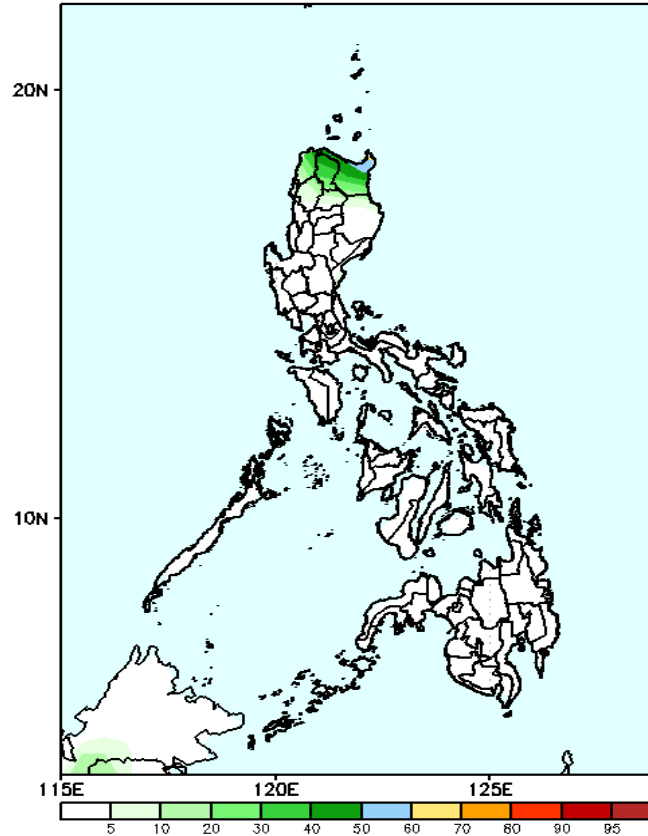
GEFS Week-1 Exceedance Prob. > 100mm  
Valid: 20241106 – 20241112



## Probability to Exceed 100mm

- Moderate to high over Batanes, Cagayan, Apayao and northern part of Ilocos Norte;
- Low over the rest of the country;

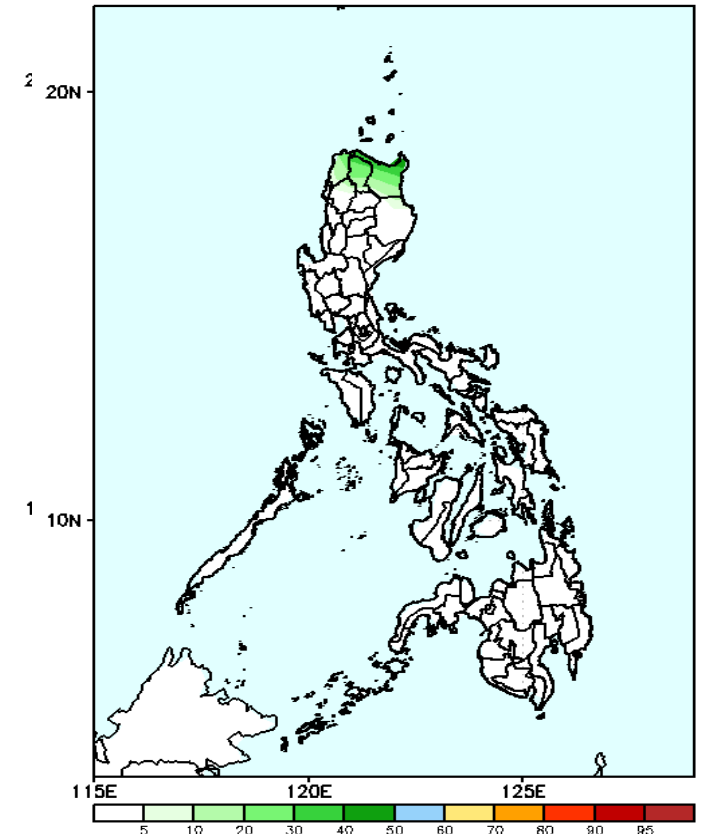
GEFS Week-1 Exceedance Prob. > 150mm  
Valid: 20241106 – 20241112



## Probability to Exceed 150mm

- Moderate to high over Batanes, and the northern part of Cagayan;
- Low over the rest of the country;

GEFS Week-1 Exceedance Prob. > 200mm  
Valid: 20241106 – 20241112



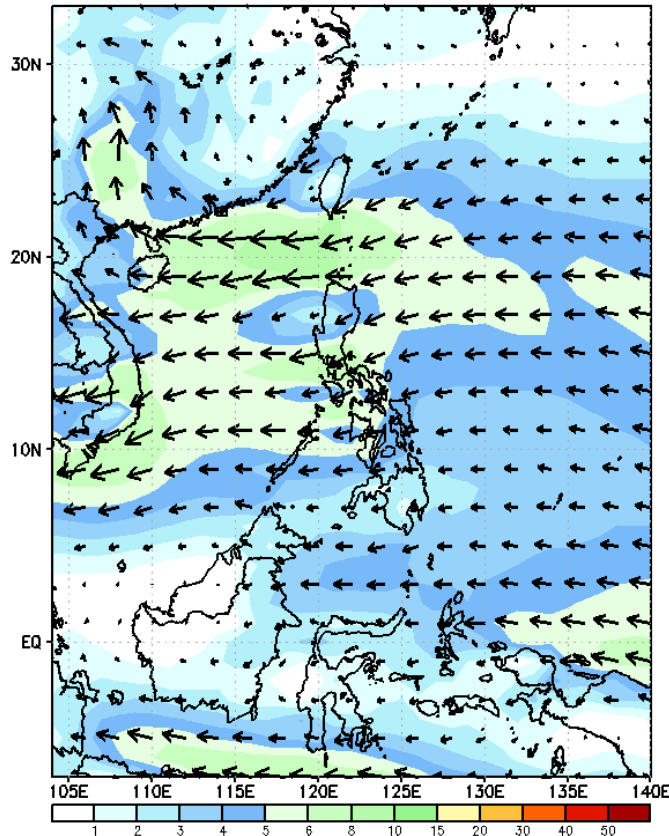
## Probability to Exceed 200mm

- Moderate over Batanes, and the northern part of Cagayan and Apayao;
- Low to moderate over Ilocos Norte and the rest of Apayao and Cagayan;
- Low over the rest of the country;

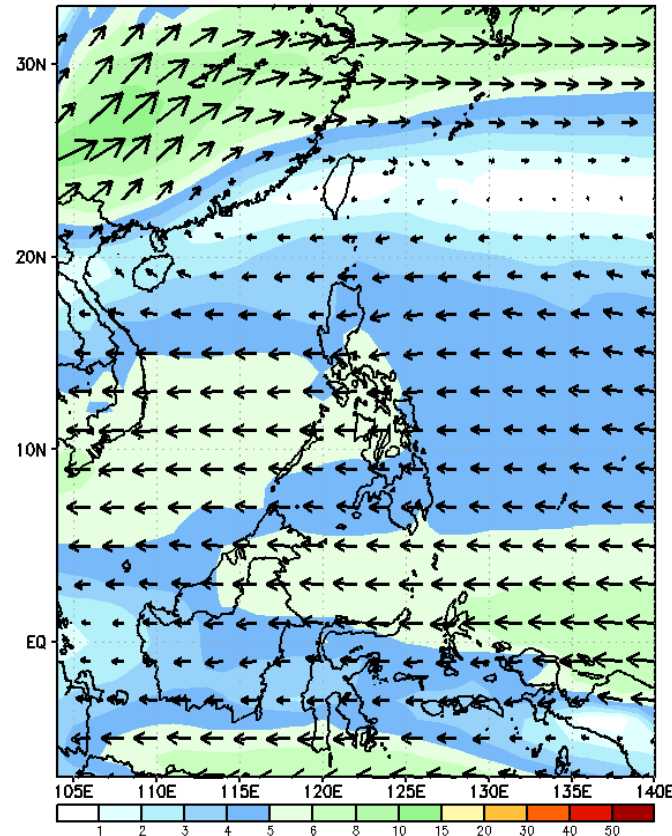
# GEFS Week-2 Wind Forecasts:

Week 2: Nov 11-17, 2024

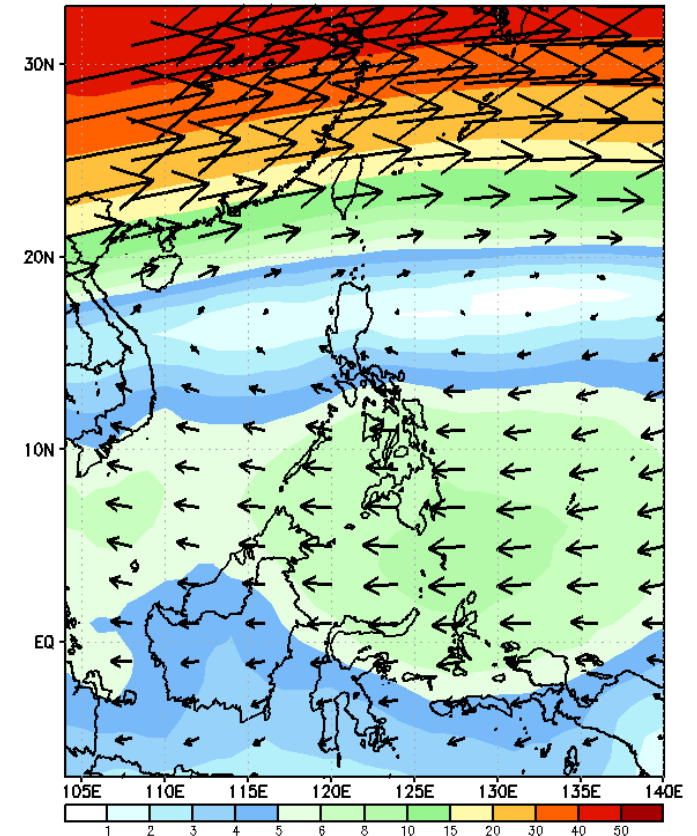
GEFS Week-2 850-hPa Wind Total  
Valid: 20241113 - 20241119



GEFS Week-2 700-hPa Wind Total  
Valid: 20241113 - 20241119



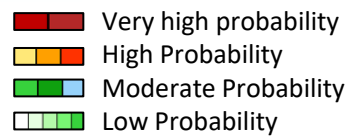
GEFS Week-2 200-hPa Wind Total  
Valid: 20241113 - 20241119



Northeasterly windflow is forecasted to affect Northern Luzon; Easterlies will likely affect the rest of the country.

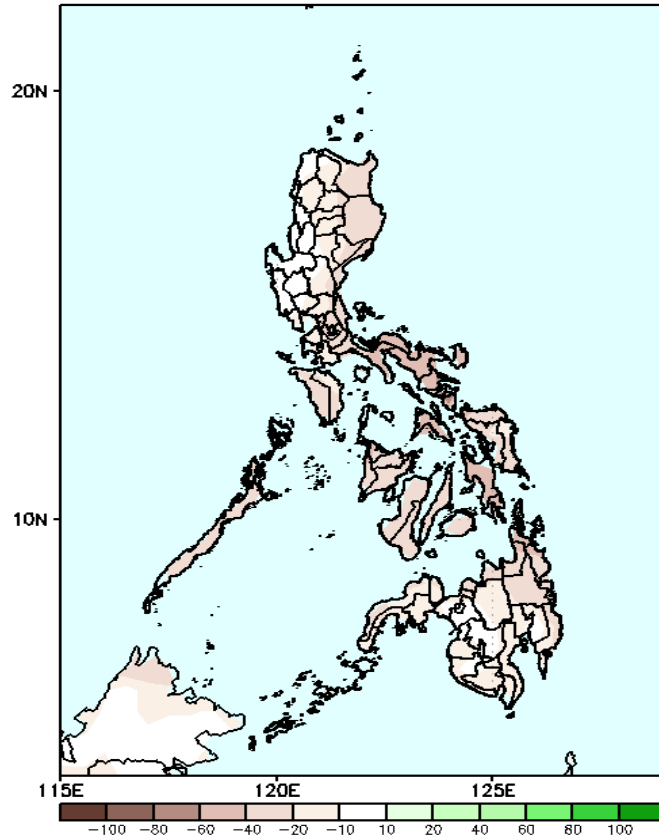


# Precipitation Anomaly and Exceedance Probability > 25/50 mm



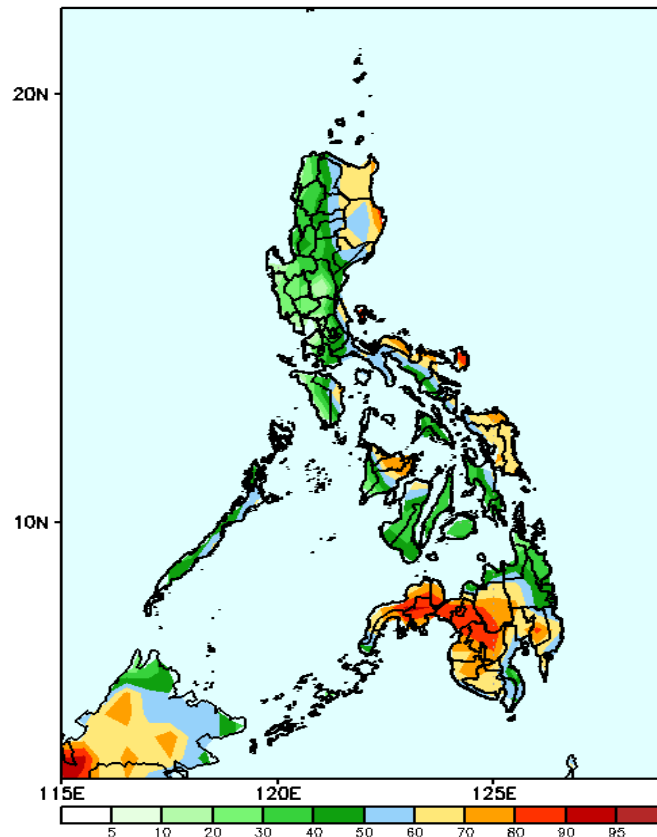
Week 2: Nov 11-17, 2024

GEFS Week-2 Precip. Anomaly  
Valid: 20241113 - 20241119



Rainfall deficit of up to 60mm is most likely over most parts of the country.

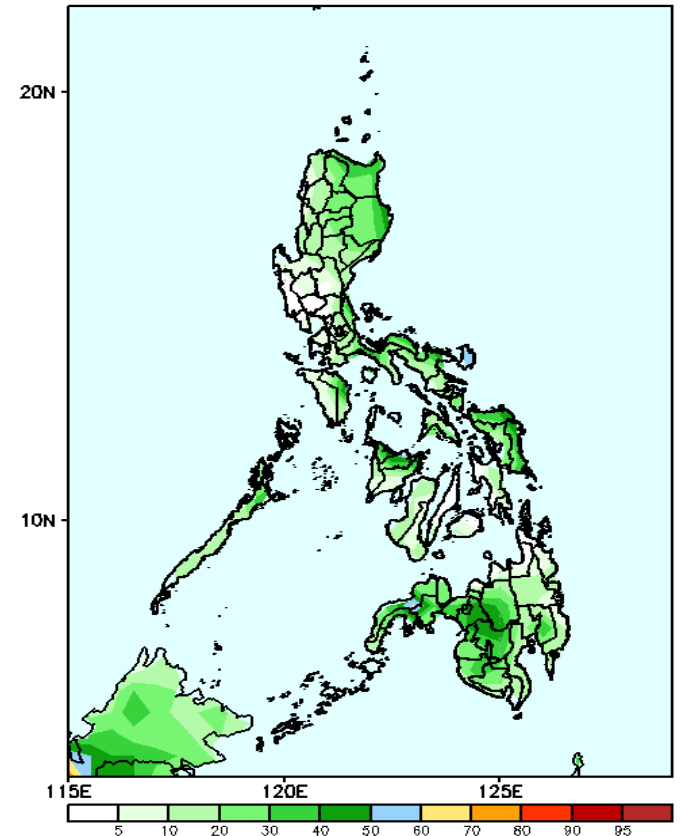
GEFS Week-2 Exceedance Prob. > 25mm  
Valid: 20241113 - 20241119



## Probability to Exceed 25mm

- High to very high over North Cotabato, Lanao provinces and Zamboanga Sibugay;
- Moderate to high over the rest of the country.

GEFS Week-2 Exceedance Prob. > 50mm  
Valid: 20241113 - 20241119



## Probability to Exceed 50mm

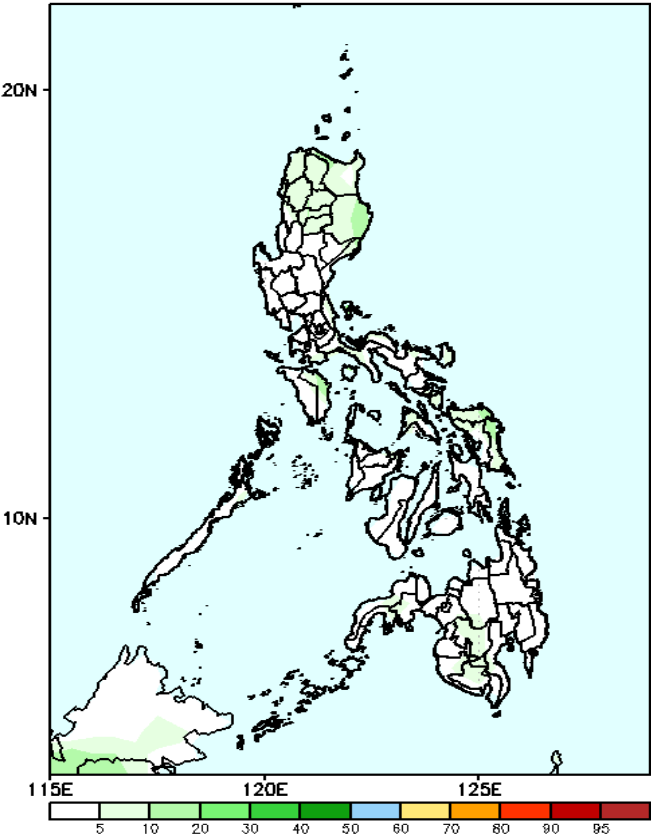
- Moderate over the northern part of Camarines Norte, Catanduanes and some areas in Zamboanga Peninsula.
- Low to moderate over the rest of the country.

# Exceedance Probability > 100/150/200 mm

Week 2: Nov 11-17, 2024

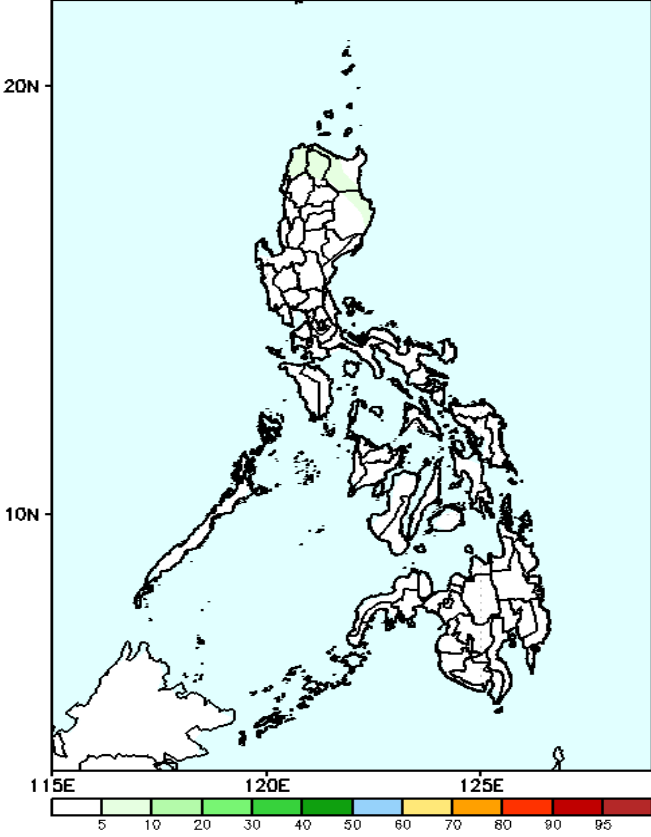
- Very high probability
- High Probability
- Moderate Probability
- Low Probability

GEFS Week-2 Exceedance Prob. > 100mm  
Valid: 20241113 - 20241119



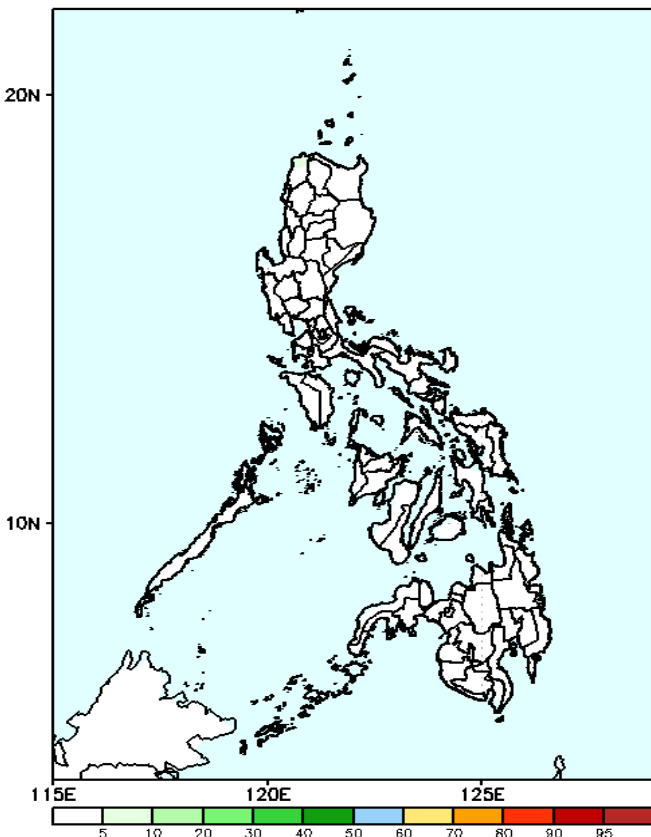
**Probability to Exceed 100mm**  
• Low across the country.

GEFS Week-2 Exceedance Prob. > 150mm  
Valid: 20241113 - 20241119



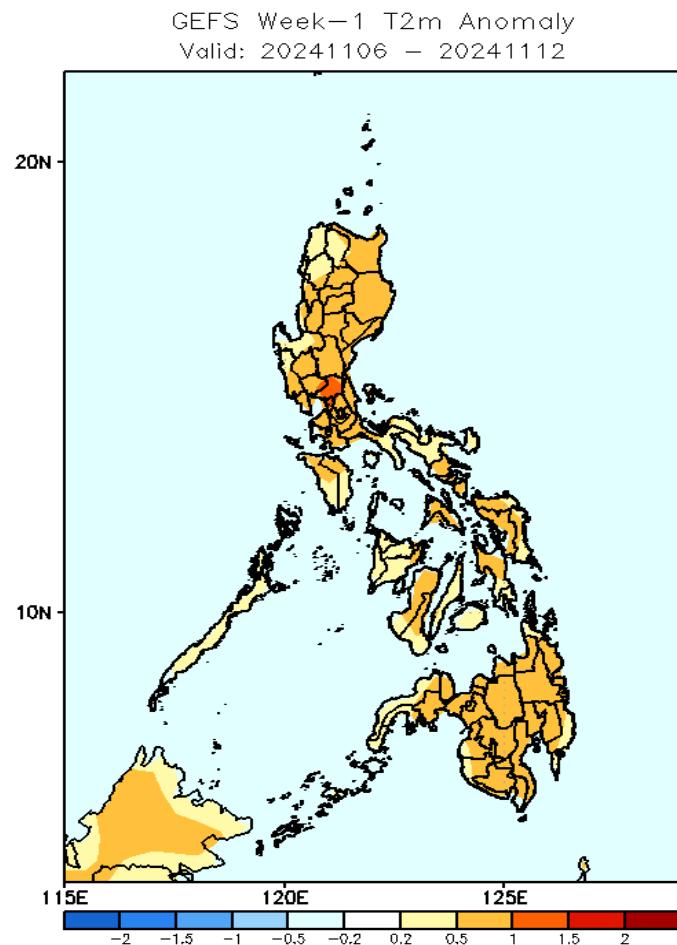
**Probability to Exceed 150mm**  
• Low across the country.

GEFS Week-2 Exceedance Prob. > 200mm  
Valid: 20241113 - 20241119



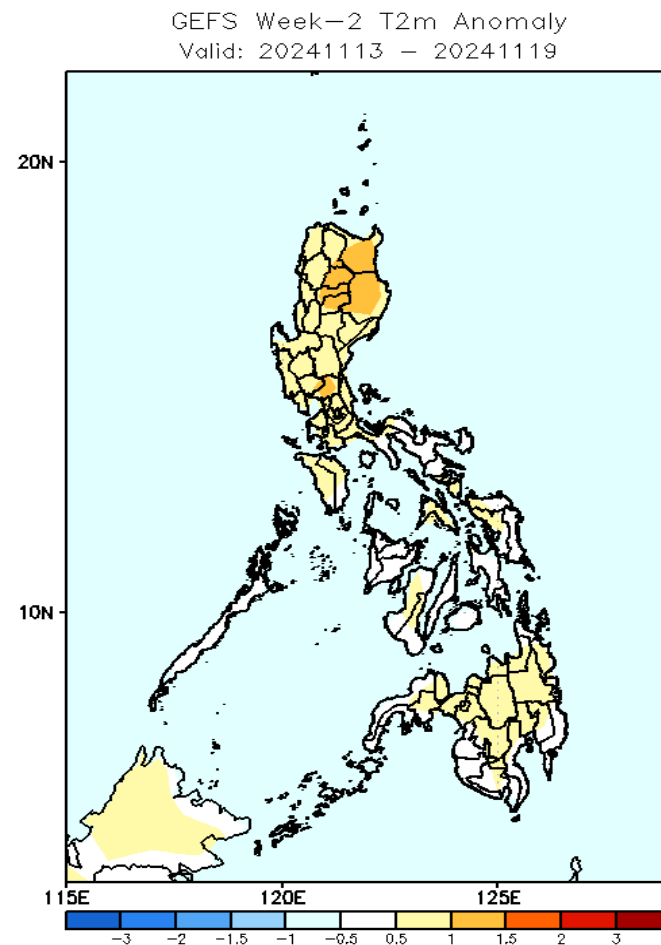
**Probability to Exceed 200mm**  
• Low across the country.

# GEFS Week-1 & 2 Forecasts: T2m Anomaly



## 2m Temperature Week 1: Nov 06-12, 2024

Slightly warmer to warmer than average surface air temperature will likely be experienced in most parts of the country.



## 2m Temperature Week 2: Nov 13-19, 2024

Near to slightly warmer than average surface air temperature will likely be experienced in most parts of the country.