



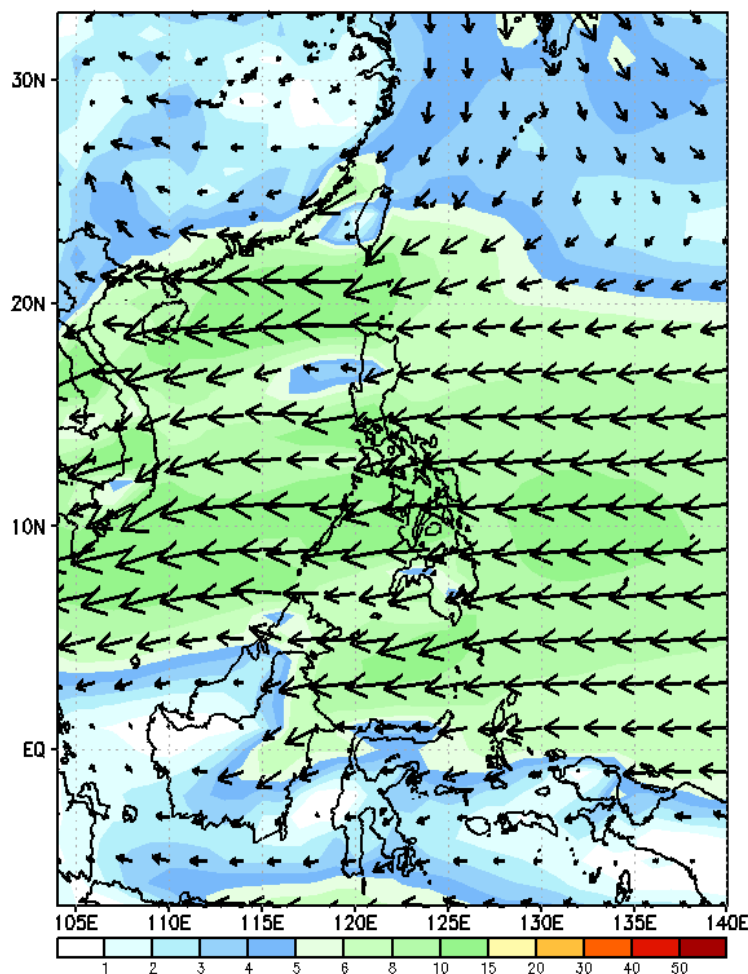
Week 1 & Week 2 Forecast for the Philippines using GEFS Model



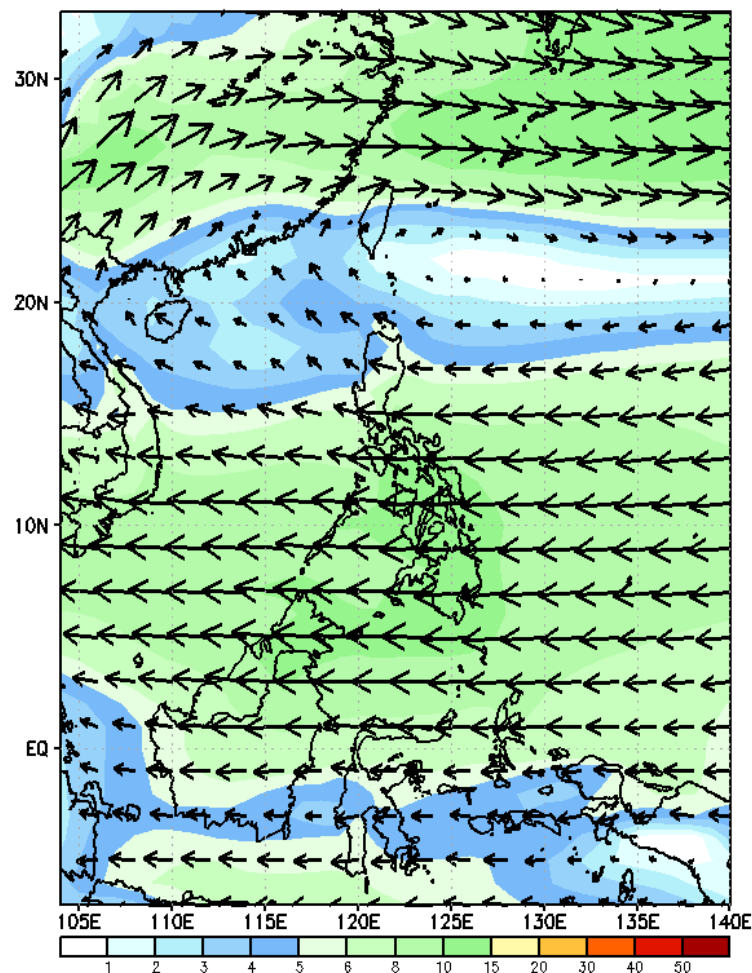
GEFS Week-1 Wind Forecasts:

Week 1: Nov 18-24, 2024

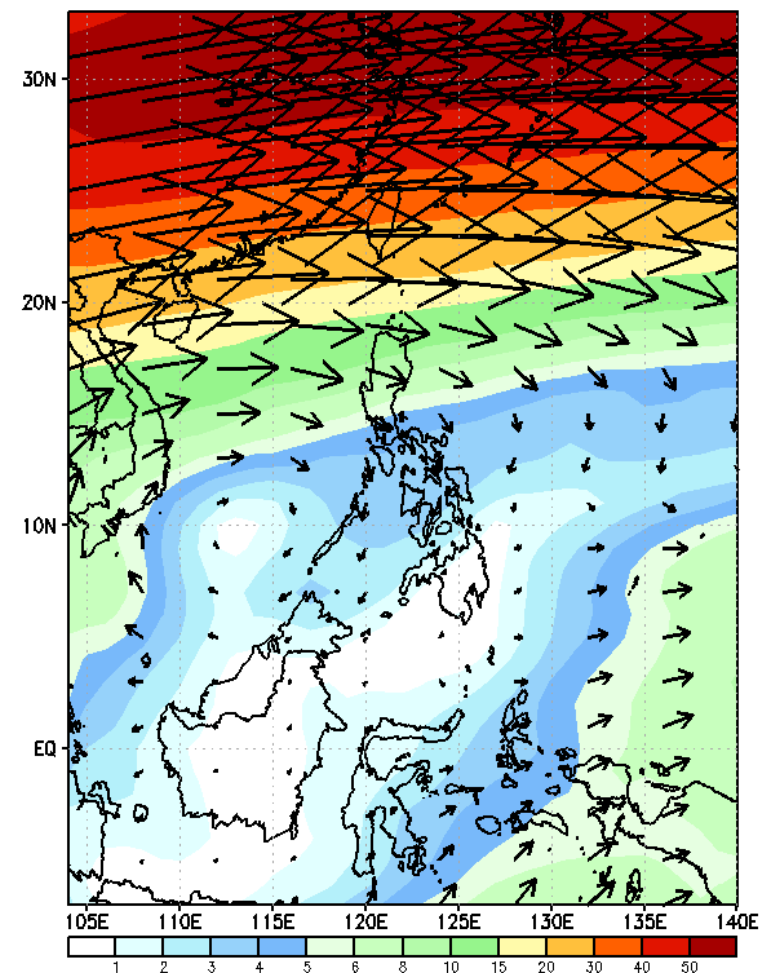
GEFS Week-1 850-hPa Wind Total
Valid: 20241118 - 20241124



GEFS Week-1 700-hPa Wind Total
Valid: 20241118 - 20241124

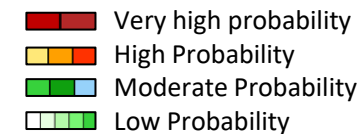


GEFS Week-1 200-hPa Wind Total
Valid: 20241118 - 20241124



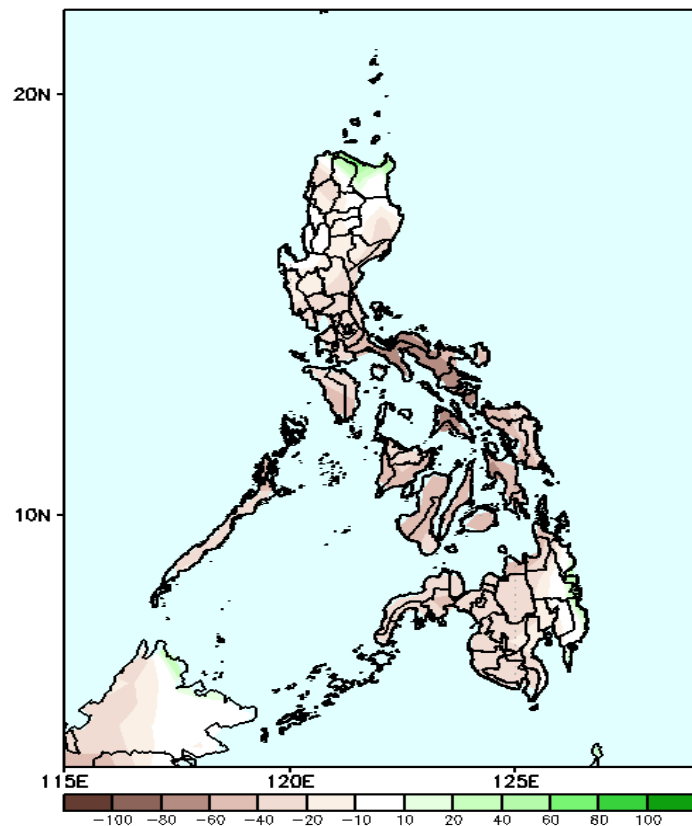
Northeast windflow affecting Extreme Northern Luzon, Easterlies will likely affect the rest of the country during the forecast period

Precipitation Anomaly and Exceedance Probability > 25/50 mm



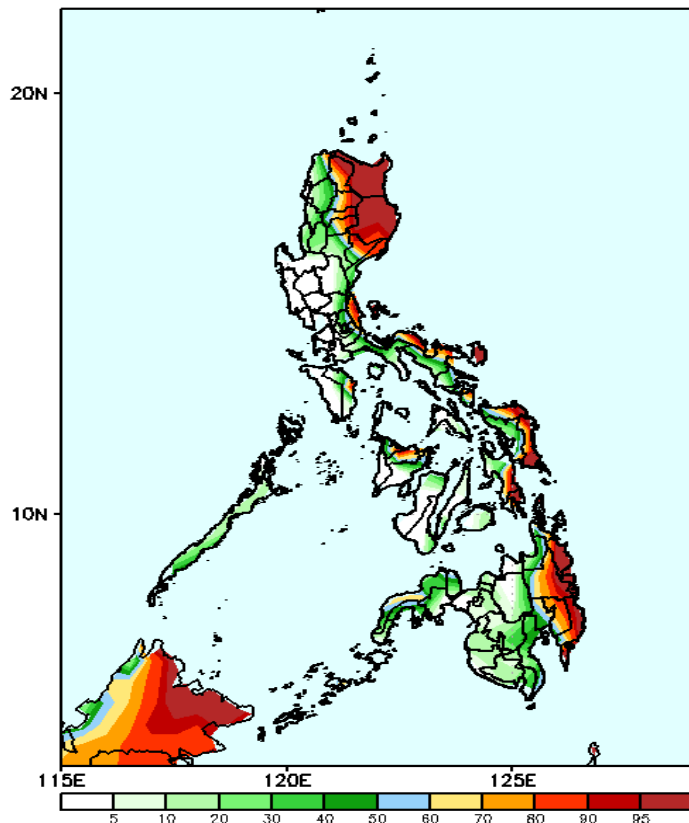
Week 1 Nov 18-24, 2024

GEFS Week-1 Precip Anomaly
Valid: 20241118 - 20241124



Rainfall deficit of 20-80mm is most likely in most parts of the country except in some areas in Apayao and Cagayan where there is 10-25mm increase of rainfall.

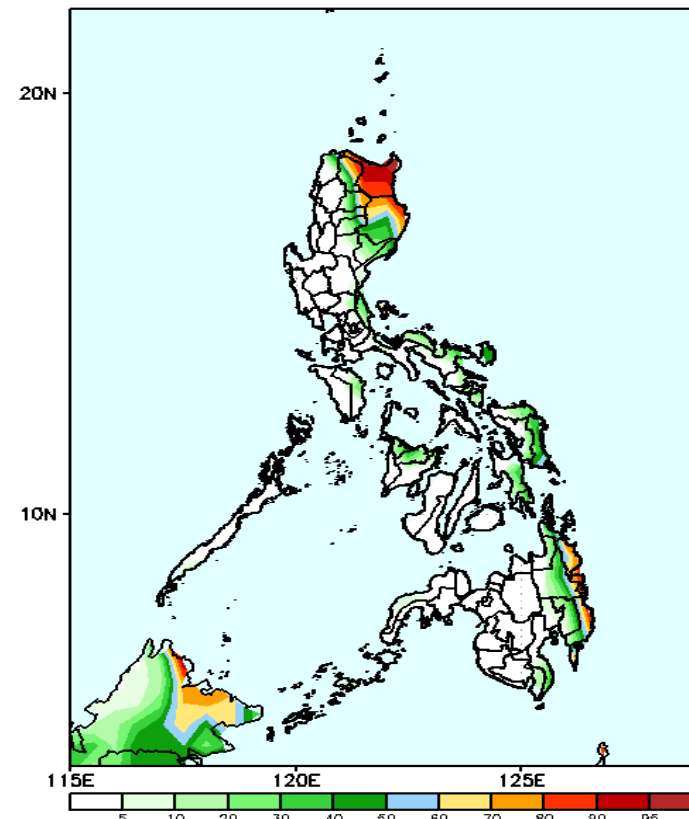
GEFS Week-1 Exceedance Prob. > 25mm
Valid: 20241118 - 20241124



Probability to Exceed 25mm

- High to a very high over most parts of Cagayan, Isabela, Apayao, Kalinga, Mt. Province, Ifugao, Aurora, eastern parts of Bicol Region, Capiz, Eastern Samar, Southern Leyte, and eastern Mindanao.
- Moderate to high over the rest of northern Luzon, Bicol Region, Zamboanga Peninsula and southern Mindanao
- Low over the rest of the country

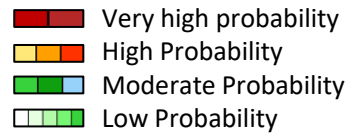
GEFS Week-1 Exceedance Prob. > 50mm
Valid: 20241118 - 20241124



Probability to Exceed 50mm

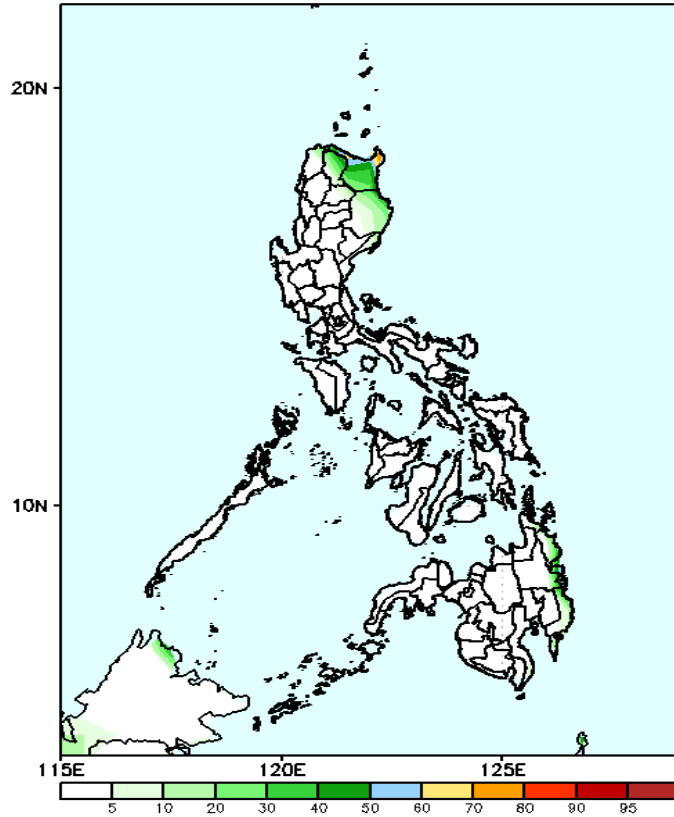
- High to a very high over Cagayan;
- Moderate to high over the northern part of Isabela, the eastern parts of Apayao, Kalinga and Mountain Province, Surigao del Sur, eastern part of Agusan del Norte and Davao Oriental;
- Low to moderate over the rest of Isabela, Catanduanes, and Eastern Samar;

Exceedance Probability > 100/150/200 mm



Week 1: Nov 18-24, 2024

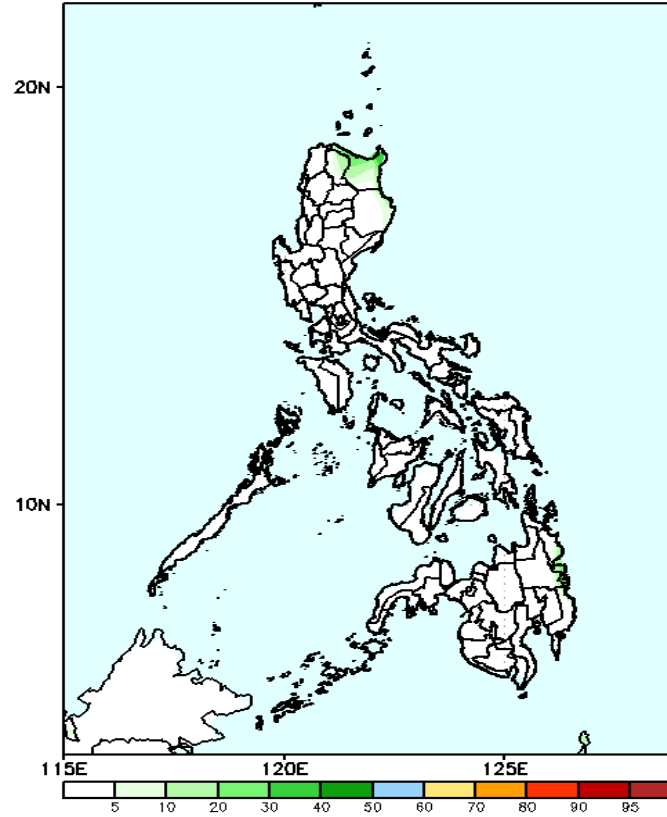
GEFS Week-1 Exceedance Prob. > 100mm
Valid: 20241118 - 20241124



Probability to Exceed 100mm

- Moderate to High over the northern portion of Cagayan;
- Low over the rest of the country;

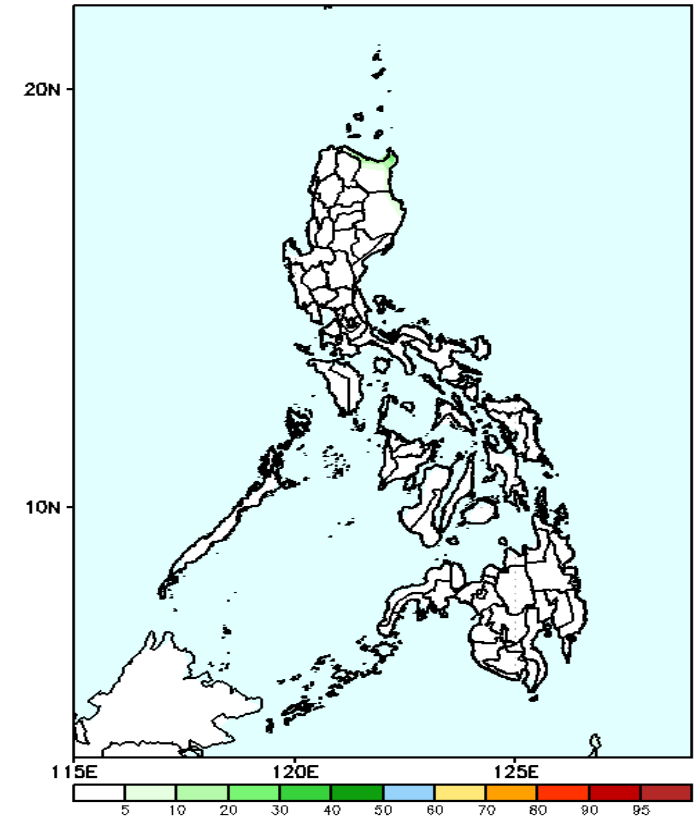
GEFS Week-1 Exceedance Prob. > 150mm
Valid: 20241118 - 20241124



Probability to Exceed 150mm

- Low across the country.

GEFS Week-1 Exceedance Prob. > 200mm
Valid: 20241118 - 20241124



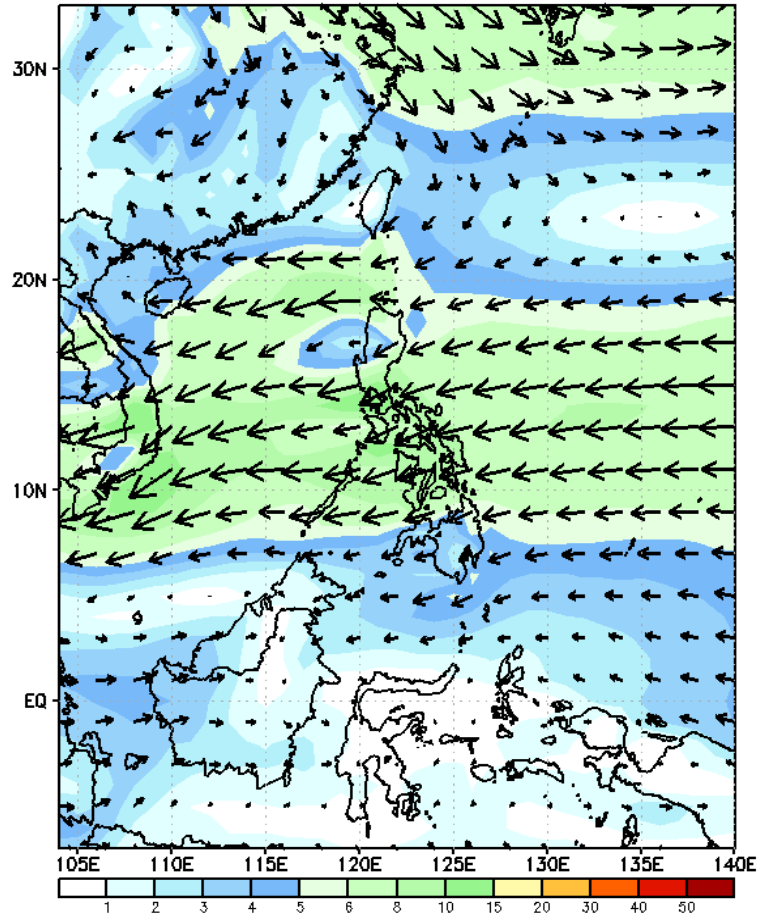
Probability to Exceed 200mm

- Low across the country.

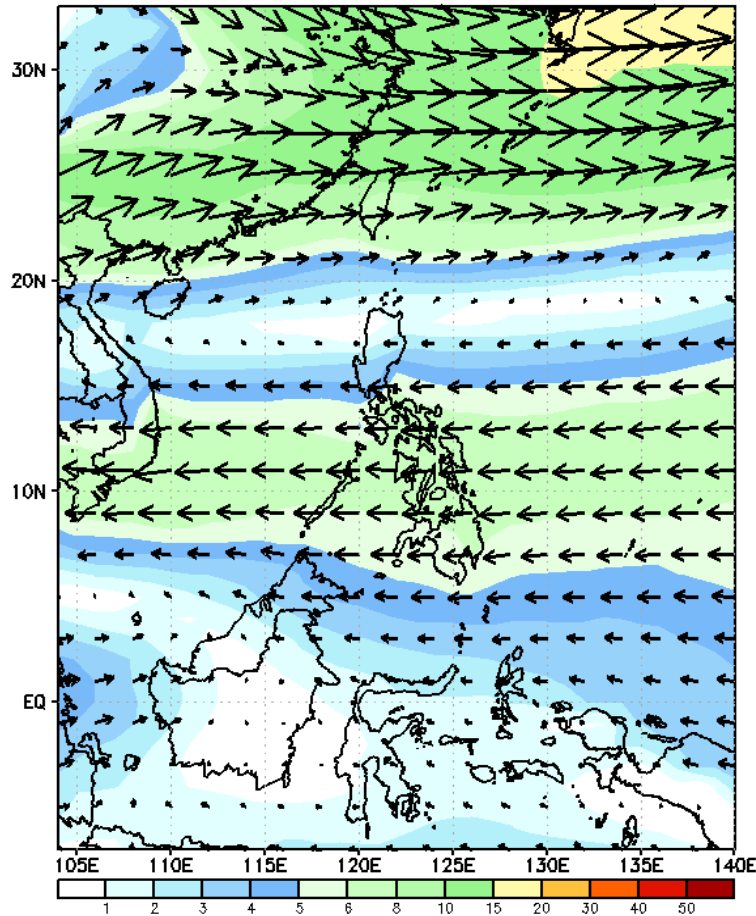
GEFS Week-2 Wind Forecasts:

Week 2: Nov 25- Dec 01, 2024

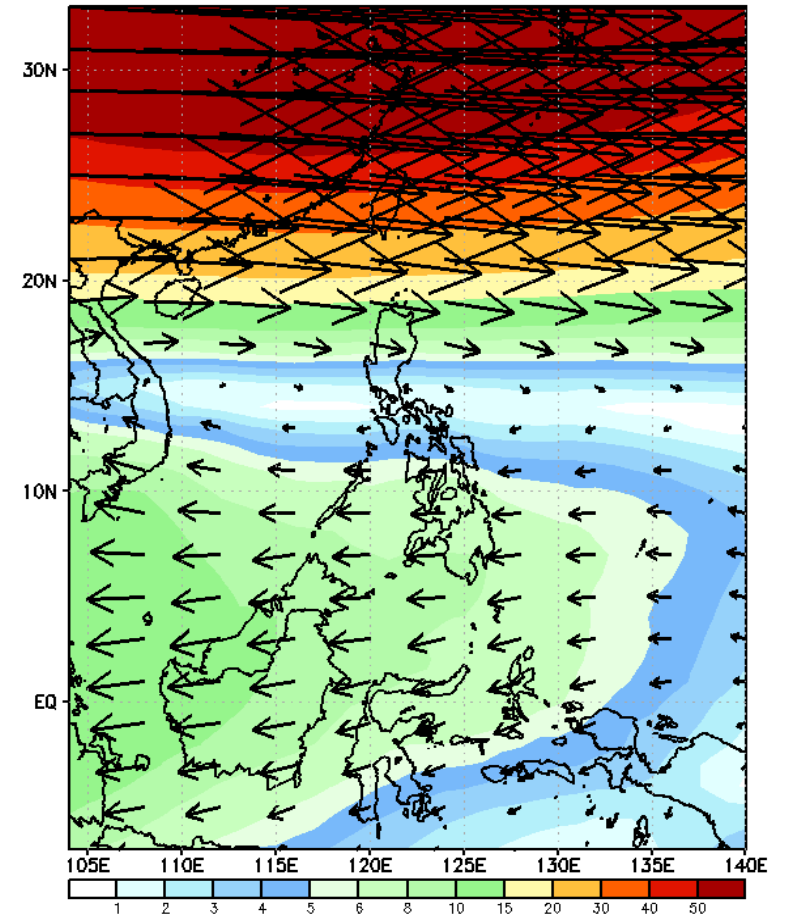
GEFS Week-2 850-hPa Wind Total
Valid: 20241125 - 20241201



GEFS Week-2 700-hPa Wind Total
Valid: 20241125 - 20241201

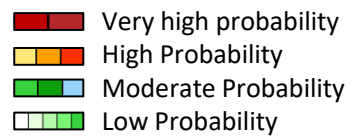


GEFS Week-2 200-hPa Wind Total
Valid: 20241125 - 20241201



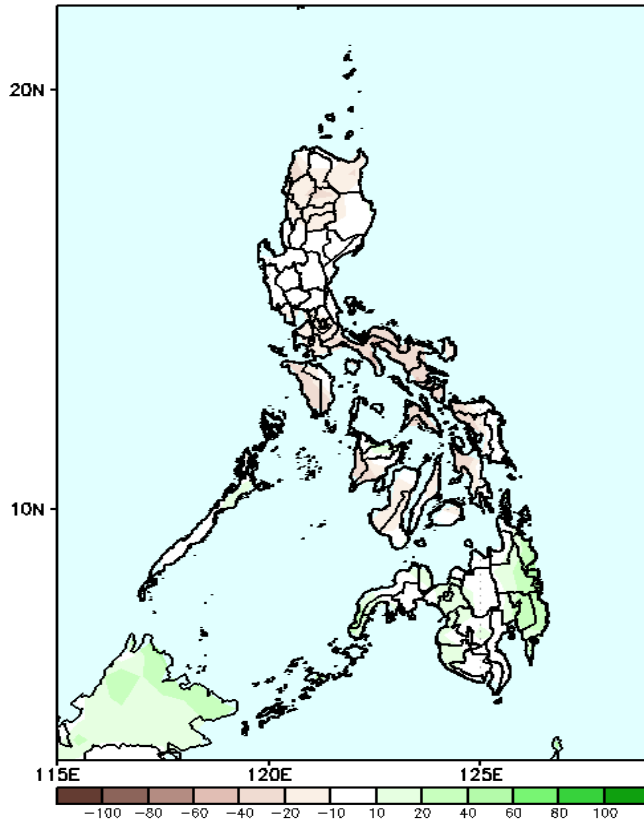
Northeast windflow affecting Northern Luzon, Easterlies will likely affect the rest of the country during the forecast period

Precipitation Anomaly and Exceedance Probability > 25/50 mm



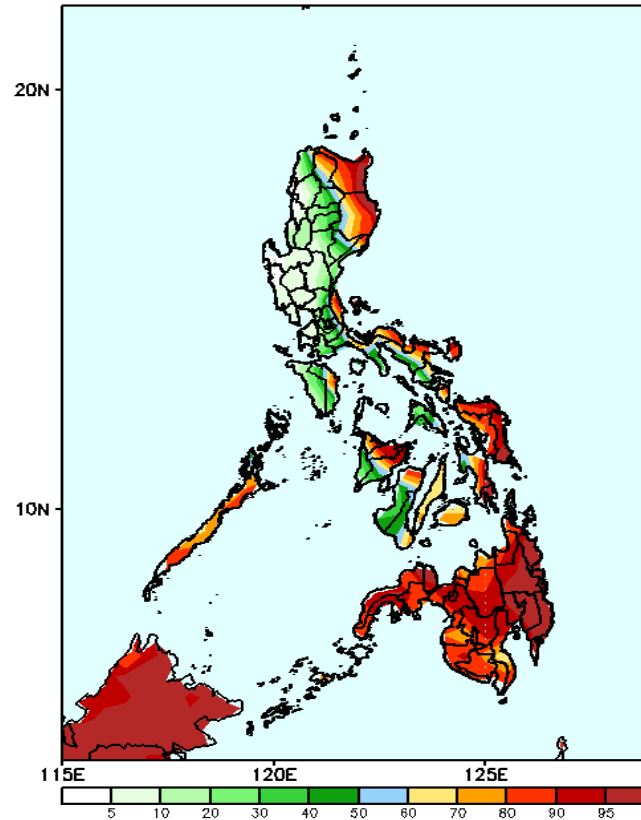
Week 2: Nov 25- Dec 01, 2024

GEFS Week-2 Precip Anomaly
Valid: 20241125 - 20241201



Rainfall deficit of 20-60mm is most likely in most parts of the country except in some areas in eastern Mindanao where there is 20-60mm increase of rainfall.

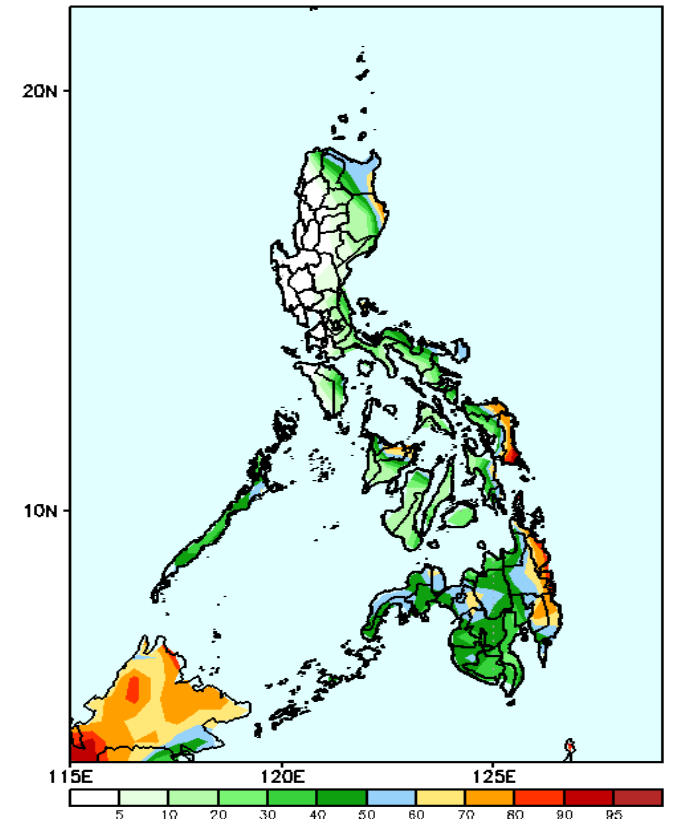
GEFS Week-2 Exceedance Prob. > 25mm
Valid: 20241125 - 20241201



Probability to Exceed 25mm

- High to a very high over most parts of Apayao, Cagayan, Isabela, Aurora, Palawan, eastern parts of Bicol Region, Panay and Negros Island, Eastern Visayas, and Mindanao.
- Moderate to high over the rest of Northern and Southern Luzon, Bicol Region, and the rest of Visayas.
- Low over the rest of Luzon.

GEFS Week-2 Exceedance Prob. > 50mm
Valid: 20241125 - 20241201

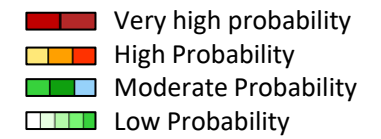


Probability to Exceed 50mm

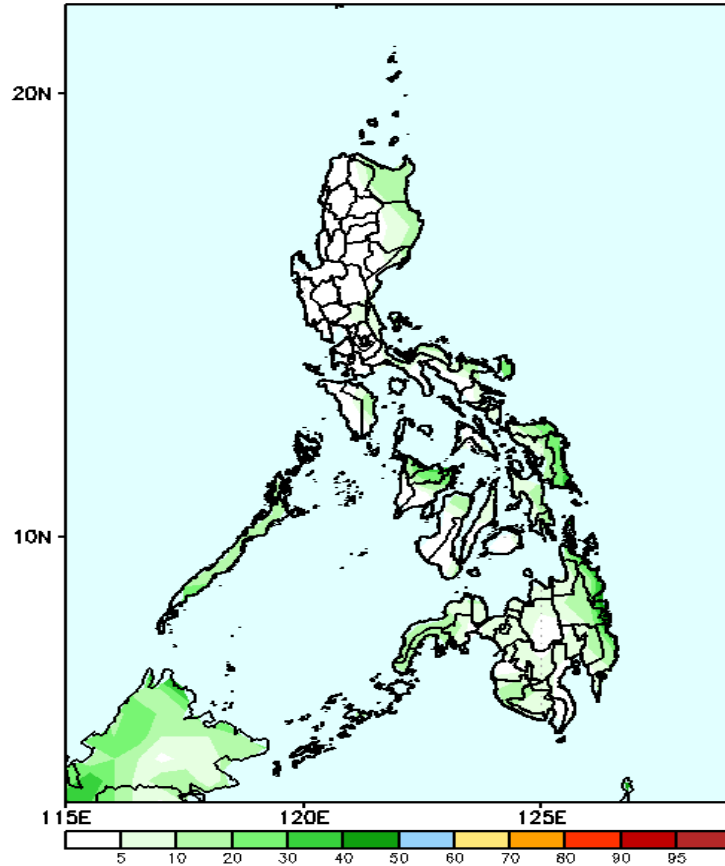
- Moderate to high over Cagayan, the eastern portions of Isabela, Aklan, Capiz, northernmost part of Negros Occidental, most parts of Eastern Visayas and most of Mindanao;
- Low to moderate over the rest of the country.

Exceedance Probability > 100/150/200 mm

Week 2: Nov 25- Dec 01, 2024



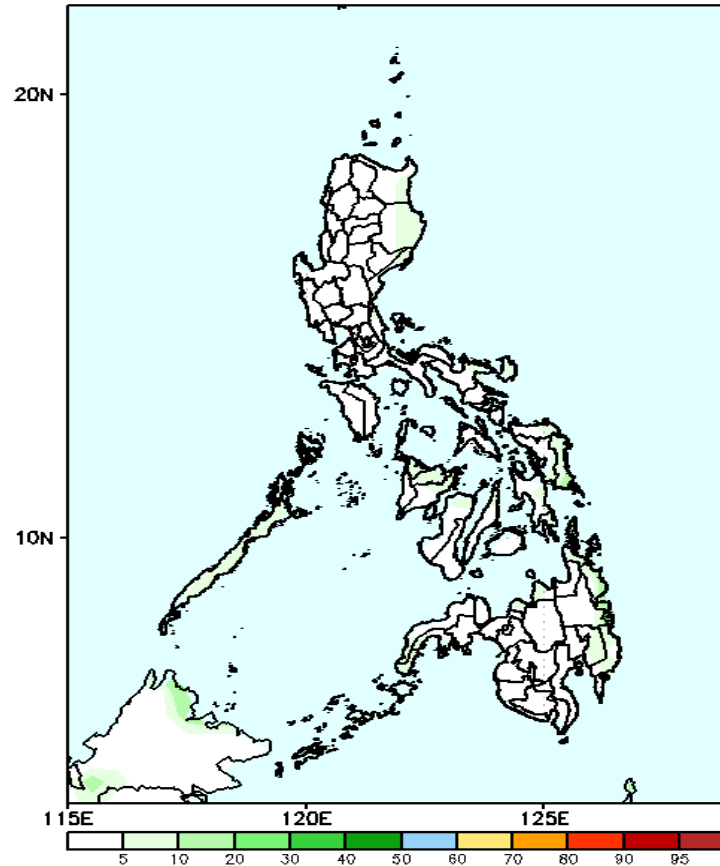
GEFS Week-2 Exceedance Prob. > 100mm
Valid: 20241125 - 20241201



Probability to Exceed 100mm

- Low across the country.

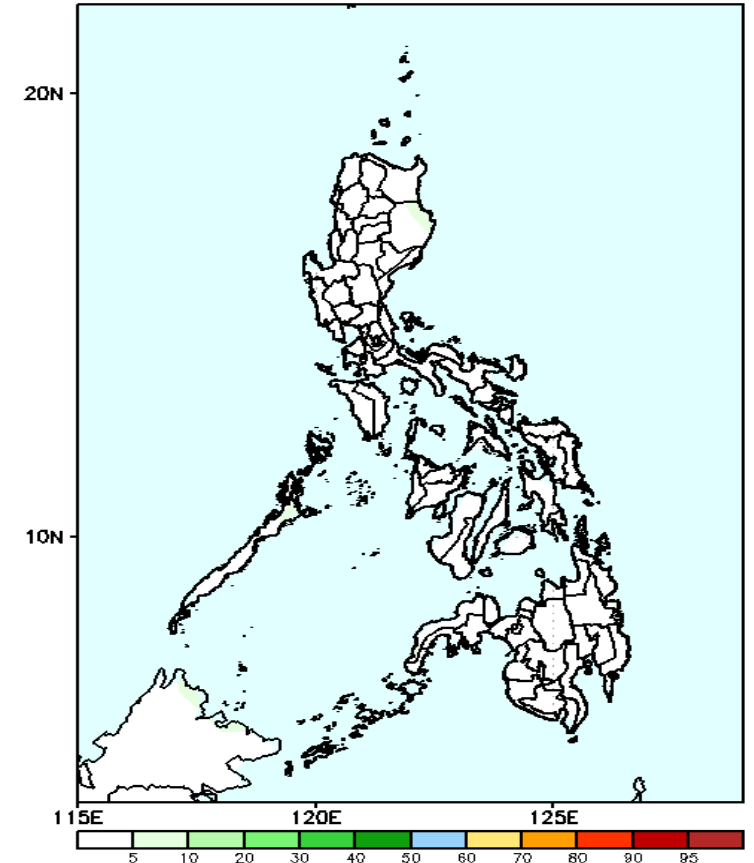
GEFS Week-2 Exceedance Prob. > 150mm
Valid: 20241125 - 20241201



Probability to Exceed 150mm

- Low across the country.

GEFS Week-2 Exceedance Prob. > 200mm
Valid: 20241125 - 20241201

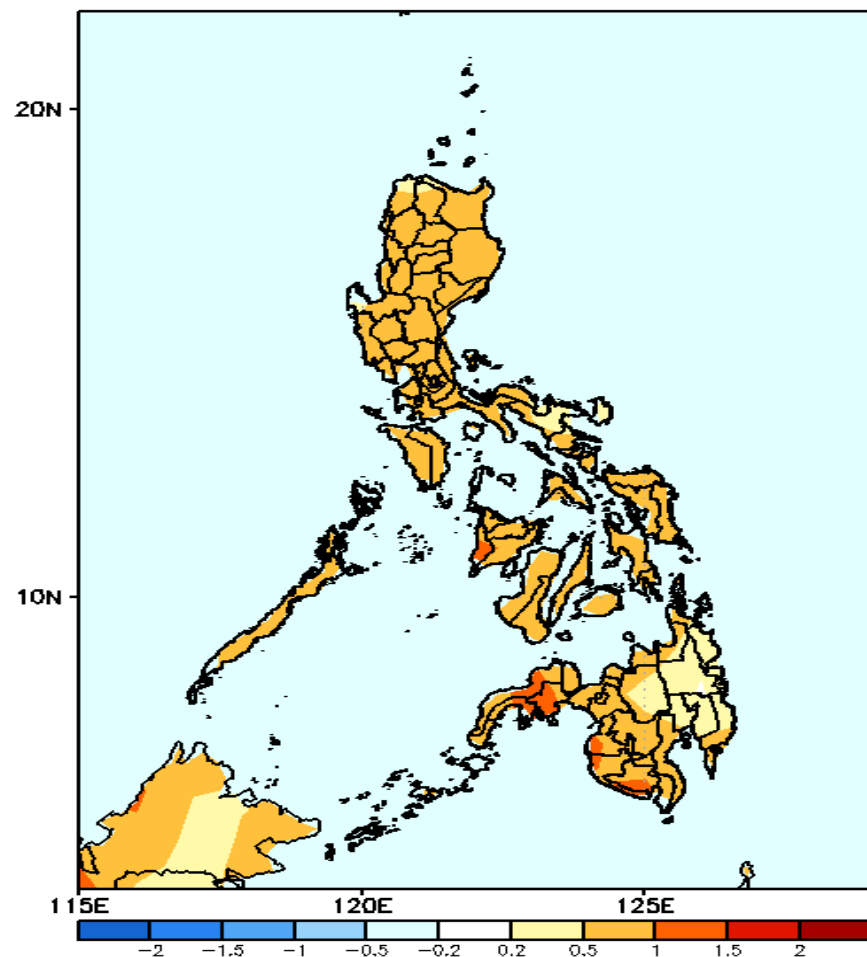


Probability to Exceed 200mm

- Low across the country.

GEFS Week-1 & 2 Forecasts: T2m Anomaly

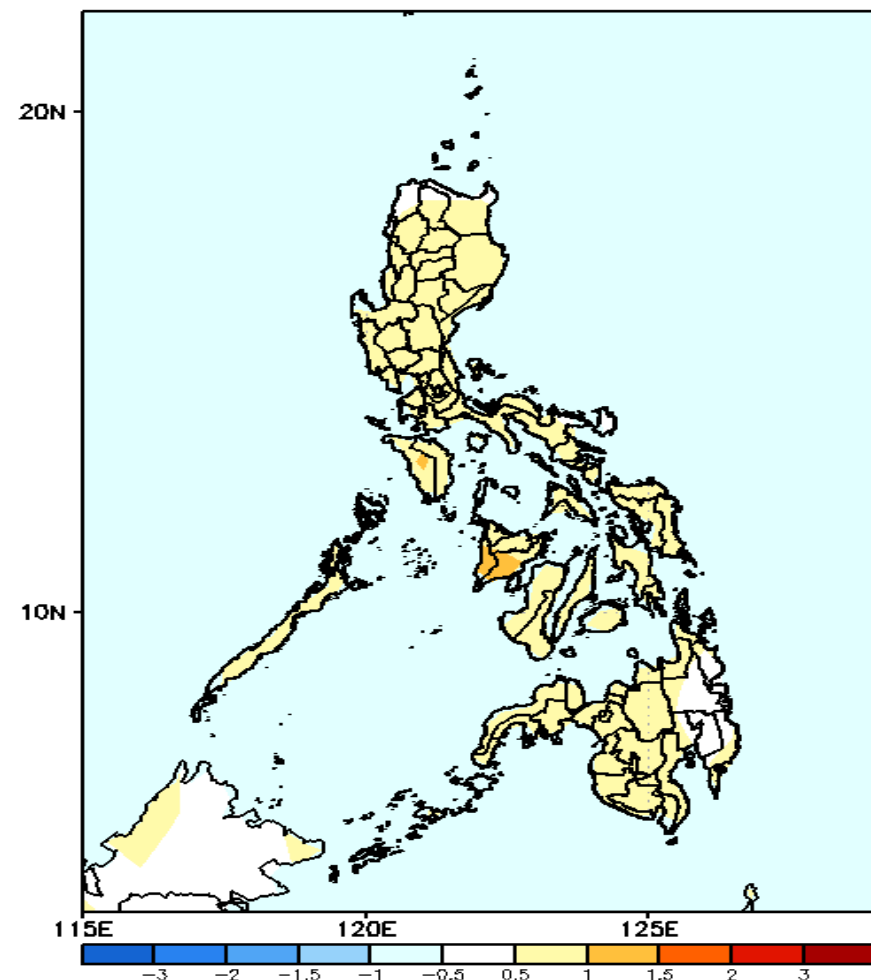
GEFS Week-1 T2m Anomaly
Valid: 20241118 – 20241124



2m Temperature Week 1: Nov 18-24, 2024

Slightly warmer to warmer than average surface air temperature will likely be experienced in most parts of the country.

GEFS Week-2 T2m Anomaly
Valid: 20241125 – 20241201



2m Temperature Week 2: Nov 25- Dec 01, 2024

Near to slightly warmer than average surface air temperature will likely be experienced in most parts of the country.