



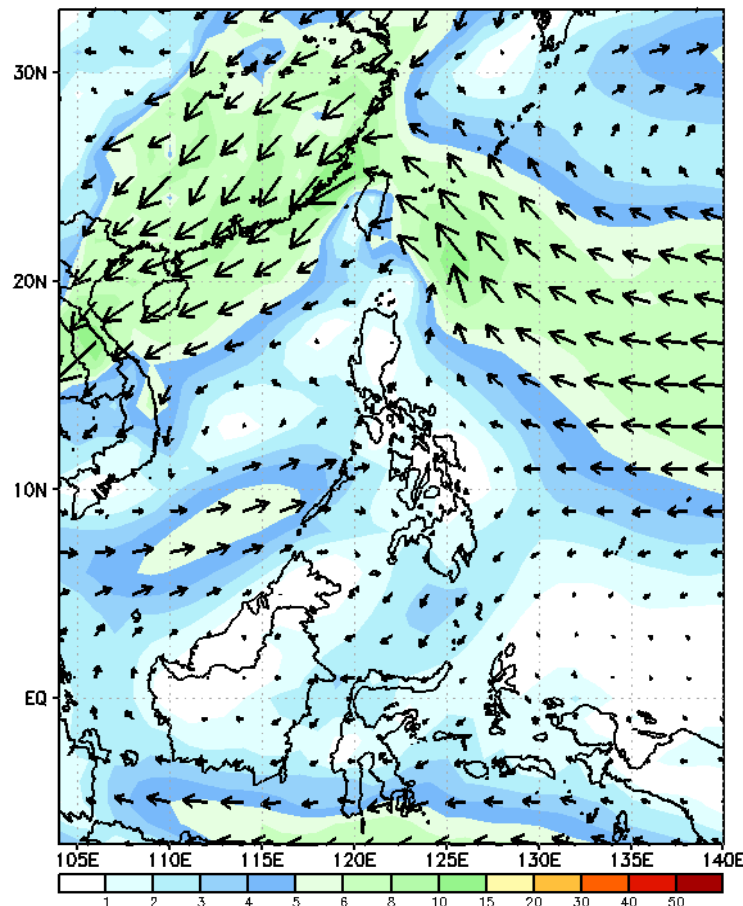
Week 1 & Week 2 Forecast for the Philippines using GEFS Model



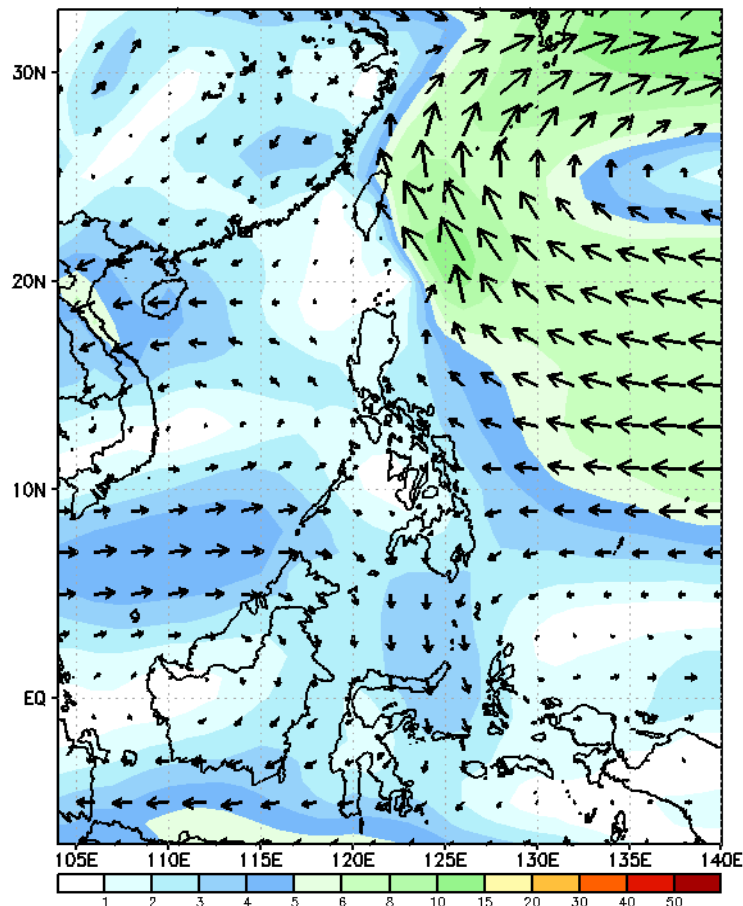
GEFS Week-1 Wind Forecasts:

Week 1: Oct 30- Nov 03, 2024

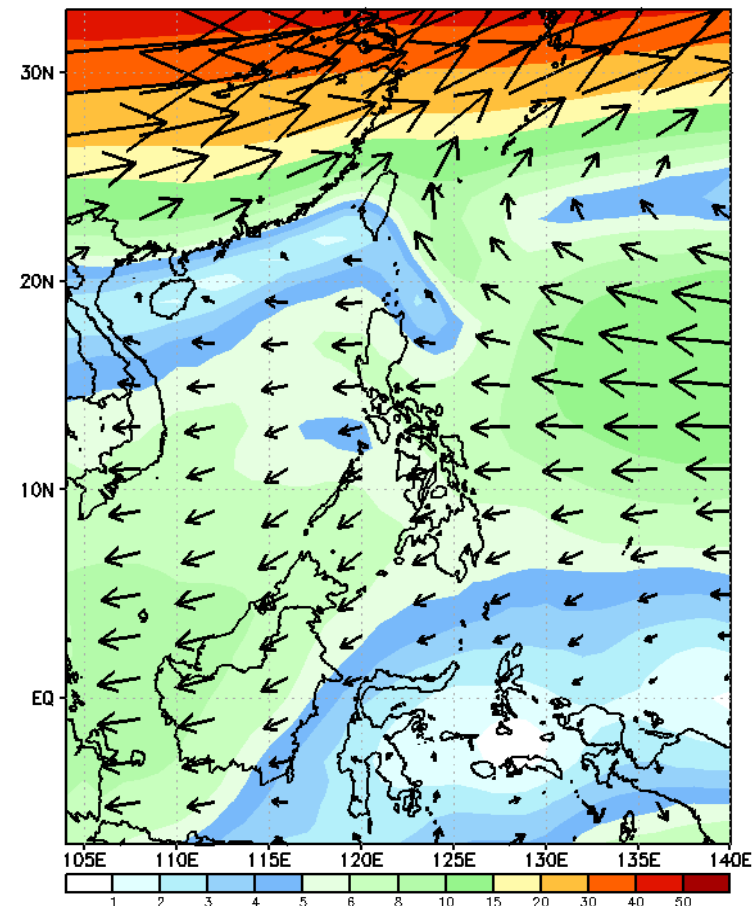
GEFS Week-1 850-hPa Wind Total
Valid: 20241030 - 20241105



GEFS Week-1 700-hPa Wind Total
Valid: 20241030 - 20241105

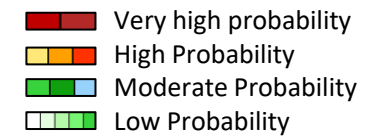


GEFS Week-1 200-hPa Wind Total
Valid: 20241030 - 20241105



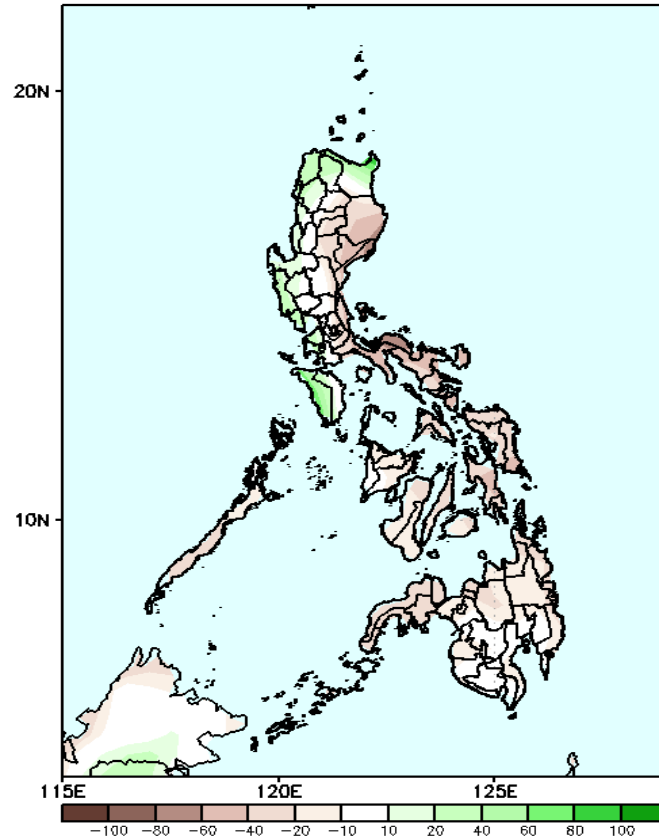
Westerly windflow affecting western sections of Visayas and Mindanao; Northeasterly windflow affecting Extreme Northern Luzon. While Easterlies affecting the rest of the country

Precipitation Anomaly and Exceedance Probability > 25/50 mm



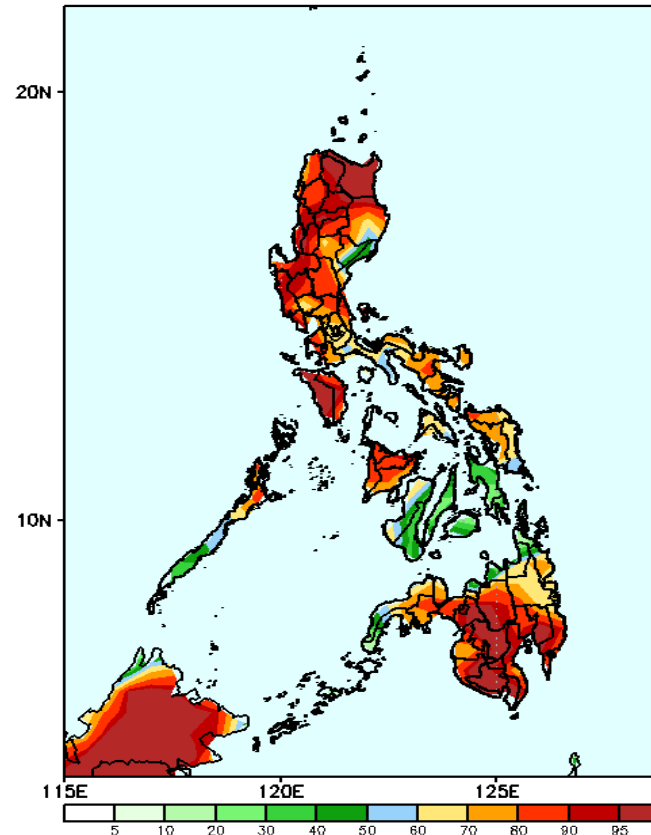
Week 1: Oct 28- Nov 03, 2024

GEFS Week-1 Precip. Anomaly
Valid: 20241030 - 20241105



Increase of rainfall of more than 100mm is expected in extreme parts of Northern Luzon; 20-60mm in Ilocos Region, Apayao, Cagayan, Zambales, Bataan and Occidental Mindoro, while 20-80mm rainfall deficit is more likely for the rest of the country.

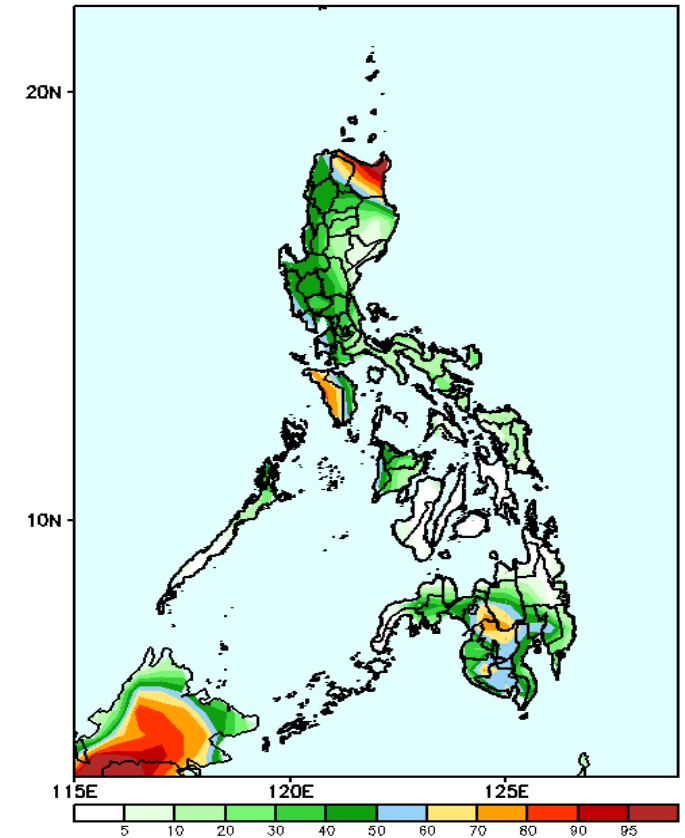
GEFS Week-1 Exceedance Prob. > 25mm
Valid: 20241030 - 20241105



Probability to Exceed 25mm

- High to very high over most parts of Northern and Central Luzon, Mindoro provinces, northern part of Palawan, Panay and most parts of Mindanao
- Moderate to high over the rest of the country.

GEFS Week-1 Exceedance Prob. > 50mm
Valid: 20241030 - 20241105

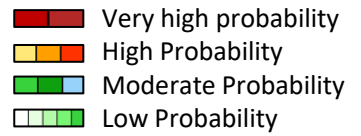


Probability to Exceed 50mm

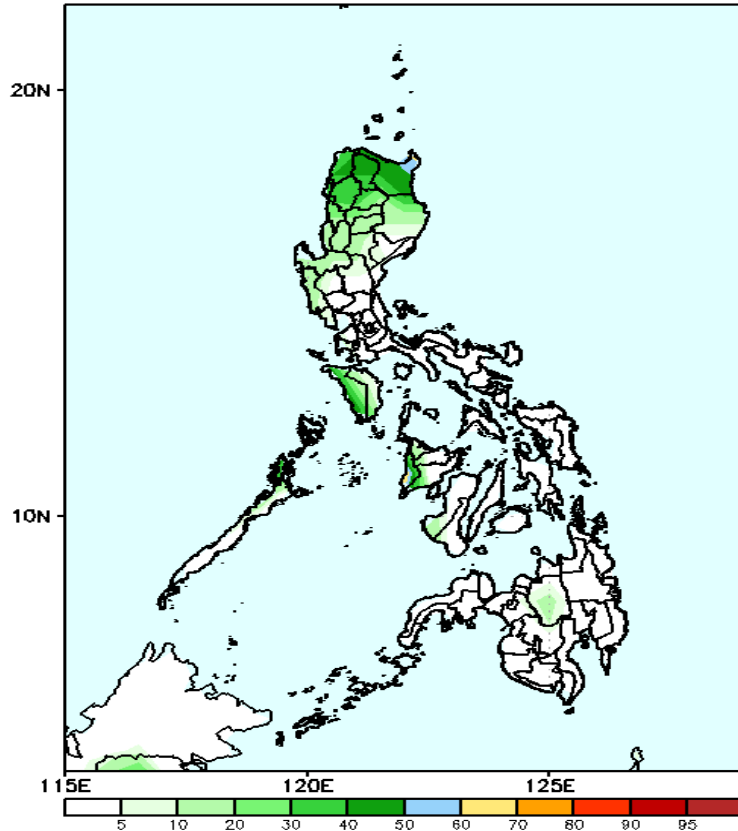
- High to very high over Extreme Northern Luzon and the northern part of Cagayan;
- Moderate to high over the rest of Cagayan, Apayao, northern part of Isabela, Zambales, Bataan, Cavite, Batangas, Mindoro Provinces, Antique, Lanao del Sur and most parts of SOCCSKSARGEN;
- Low to moderate over the rest of the country.

Exceedance Probability > 100/150/200 mm

Week 1: Oct 28- Nov 03, 2024



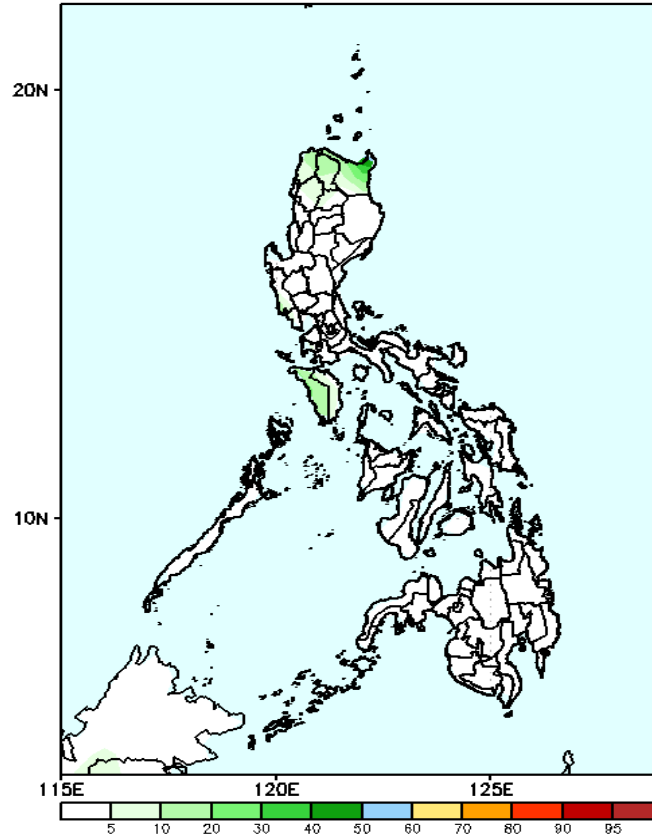
GEFS Week-1 Exceedance Prob. > 100mm
Valid: 20241028 - 20241103



Probability to Exceed 100mm

- High to very high over Extreme Northern Luzon
- Moderate to high over the northern part of Cagayan;
- Low over the rest of the country;

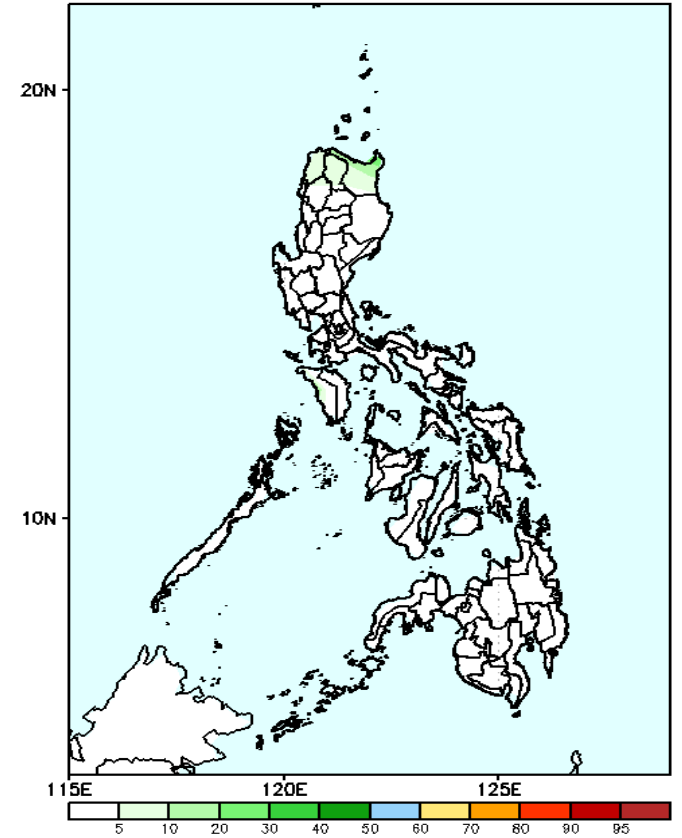
GEFS Week-1 Exceedance Prob. > 150mm
Valid: 20241030 - 20241105



Probability to Exceed 150mm

- Moderate to high over Extreme Northern Luzon;
- Moderate over the northernmost part of Cagayan;
- Low over the rest of the country.

GEFS Week-1 Exceedance Prob. > 200mm
Valid: 20241030 - 20241105



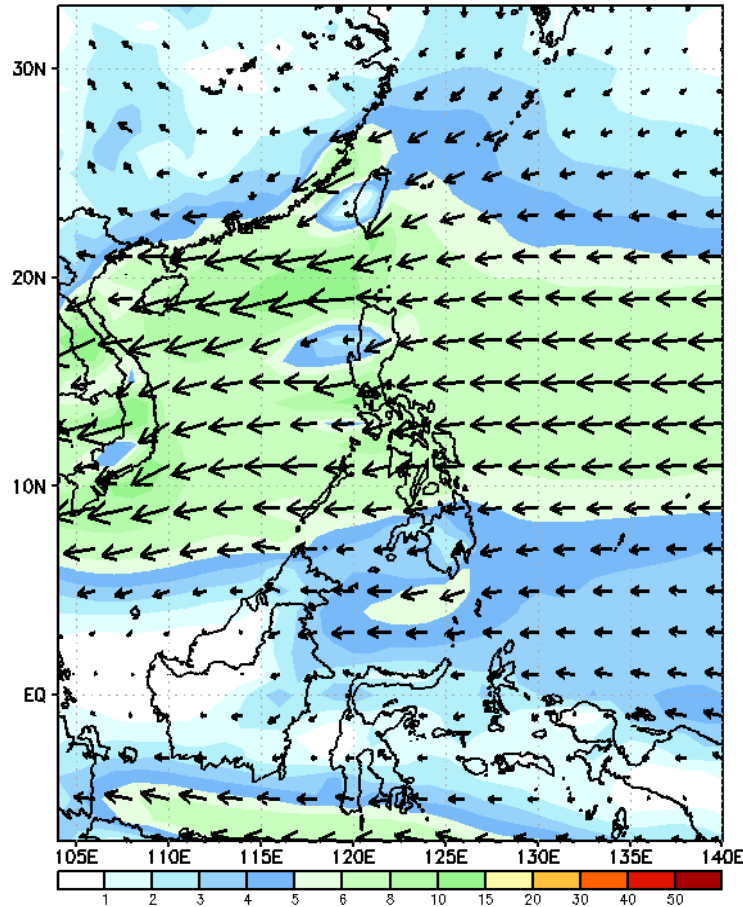
Probability to Exceed 200mm

- Low across the country.

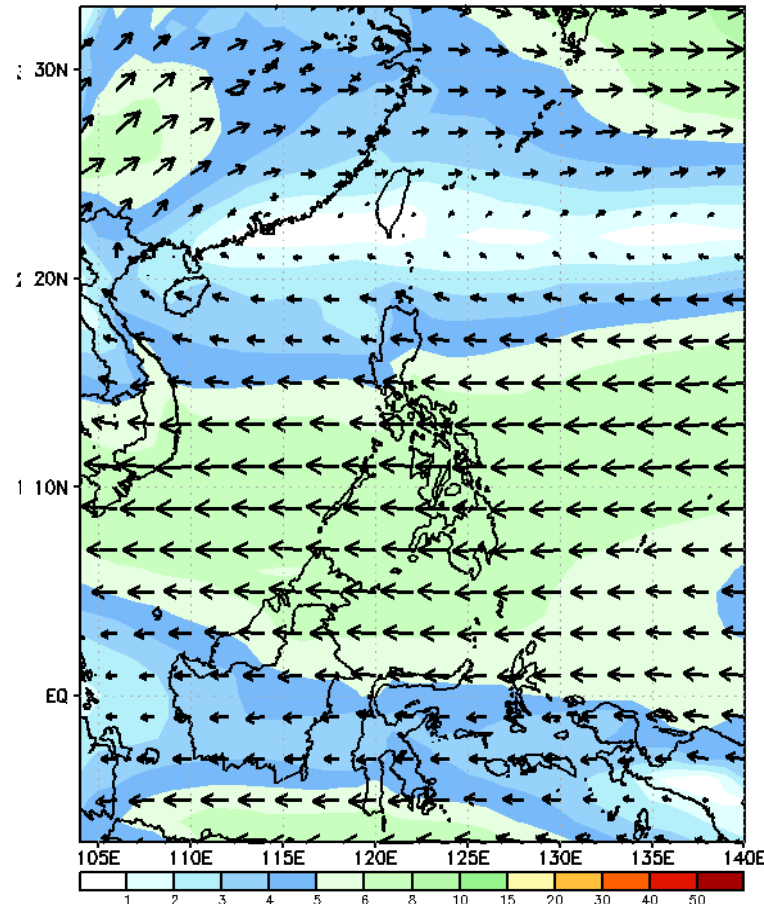
GEFS Week-2 Wind Forecasts:

Week 2: Nov 04-10, 2024

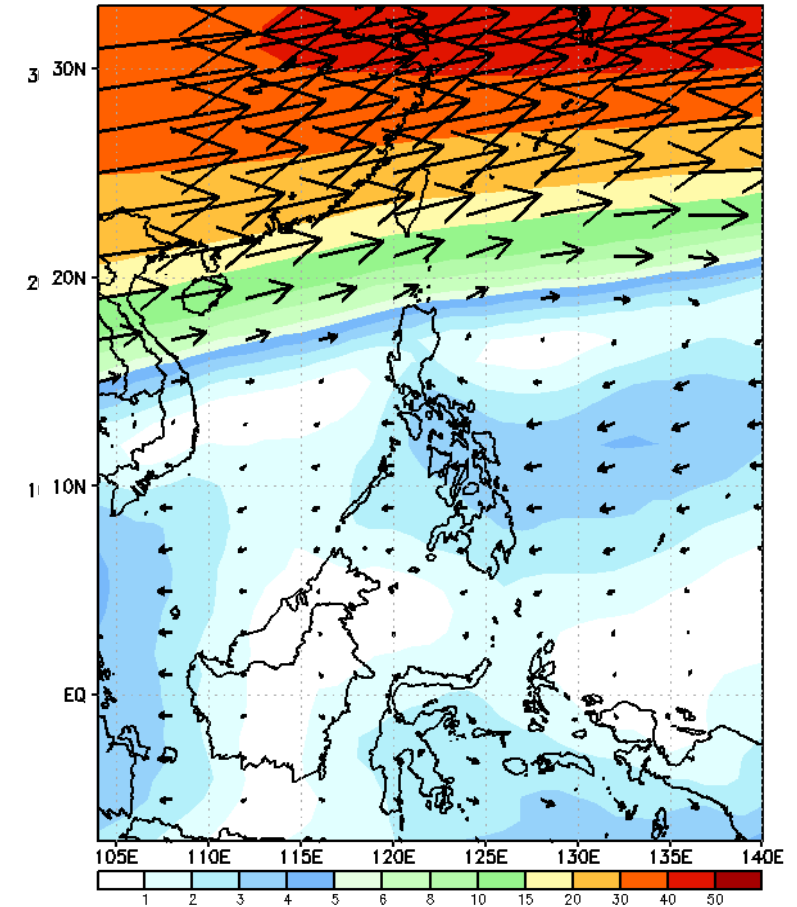
GEFS Week-2 850-hPa Wind Total
Valid: 20241106 - 20241112



GEFS Week-2 700-hPa Wind Total
Valid: 20241106 - 20241112

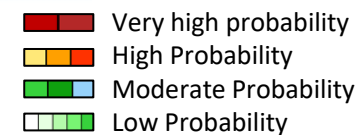


GEFS Week-2 200-hPa Wind Total
Valid: 20241106 - 20241112



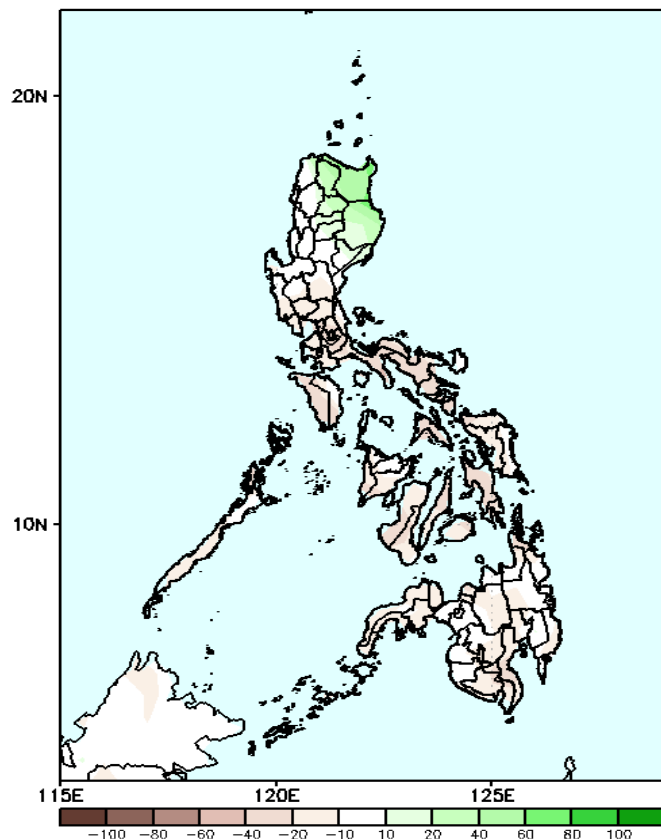
Northeasterly windflow is forecasted to affect Extreme Northern. Easterlies will likely affect the rest of the country.

Precipitation Anomaly and Exceedance Probability > 25/50 mm



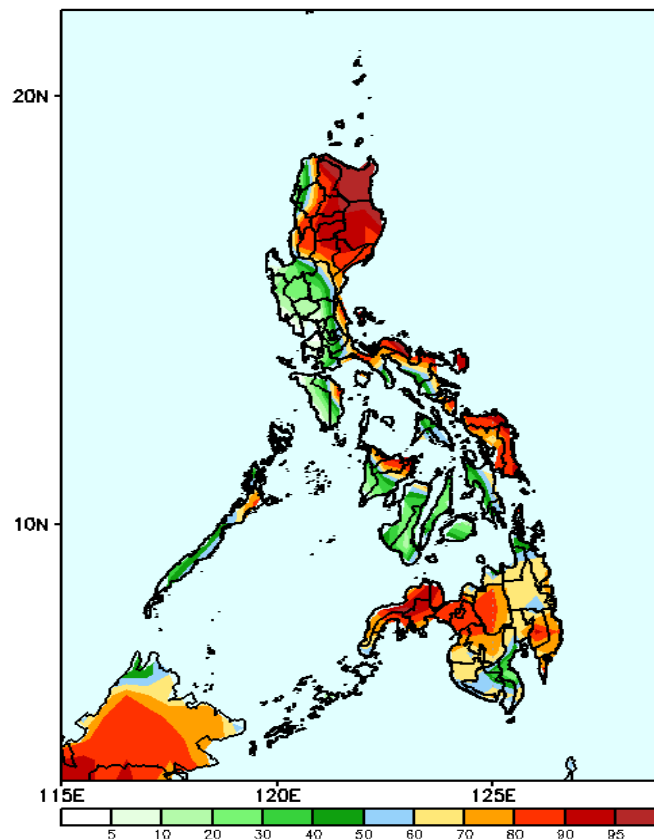
Week 2: Nov 04-10, 2024

GEFS Week-2 Precip Anomaly
Valid: 20241106 - 20241112



Increase of rainfall of 10-60mm is likely in Apayao, Kalinga, Cagayan and Isabela while 10-40mm rainfall deficit is expected in Bicol Region.

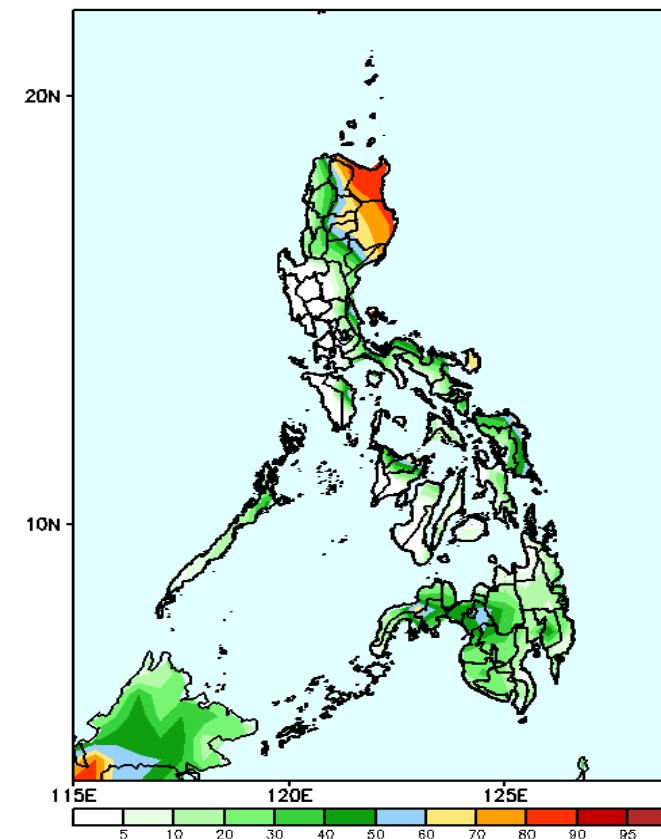
GEFS Week-2 Exceedance Prob. > 25mm
Valid: 20241106 - 20241112



Probability to Exceed 25mm

- High to very high over most parts of eastern Luzon, most CAR, Samar provinces, eastern Panay, northern Palawan, and Mindanao
- Low to moderate over the rest of the country.

GEFS Week-2 Exceedance Prob. > 50mm
Valid: 20241106 - 20241112

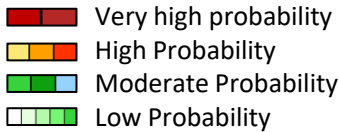


Probability to Exceed 50mm

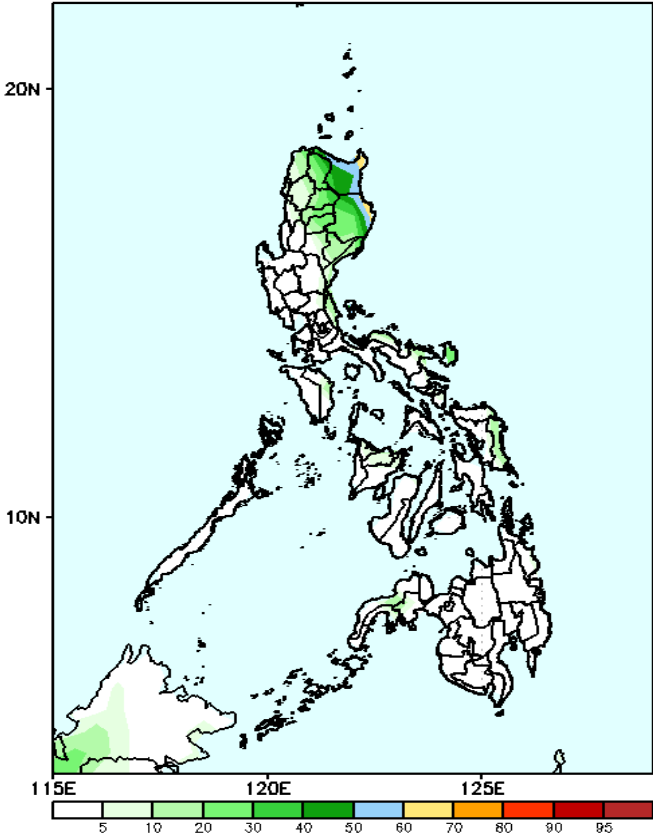
- Moderate to high over most of Cagayan Valley, eastern portion of CAR, the northern part of Aurora, Quezon, and Camarines provinces, Catanduanes, Capiz, Northern and Easter Samar and some part of Lanao provinces, and Zamboanga Peninsula;
- Low to moderate over the rest of the country.

Exceedance Probability > 100/150/200 mm

Week 2: Nov 04-10, 2024

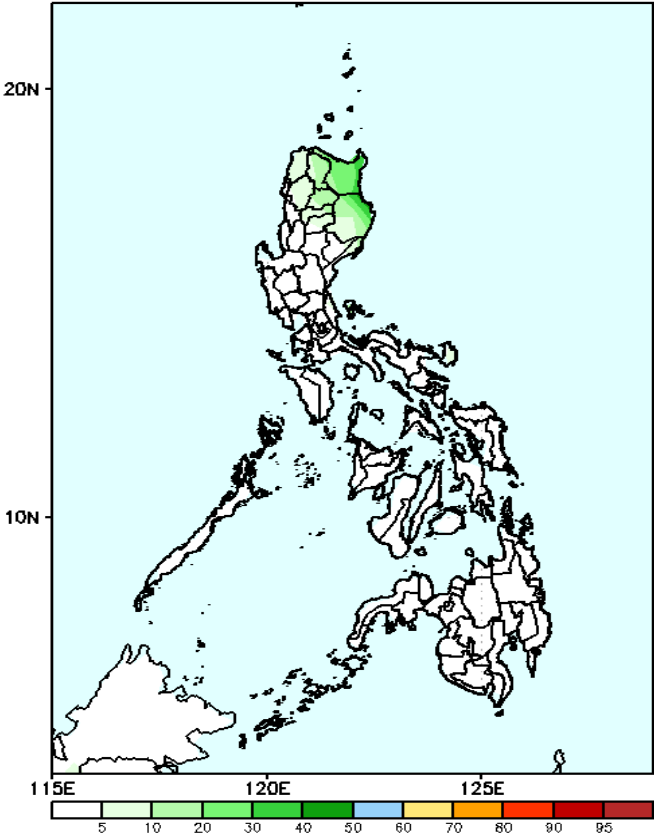


GEFS Week-2 Exceedance Prob. > 100mm
Valid: 20241106 – 20241112



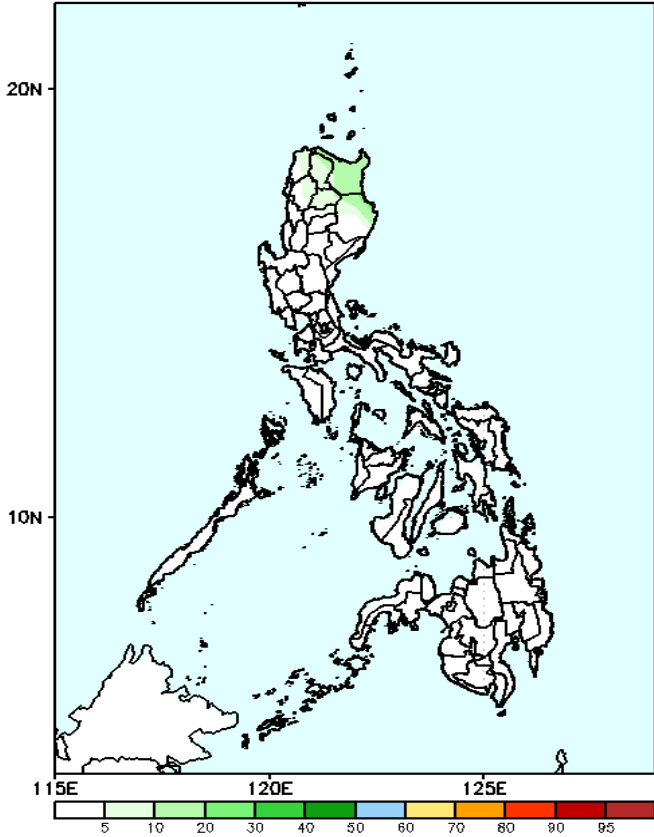
- Probability to Exceed 100mm**
- Moderate to high over Cagayan and the eastern part of Isabela,
 - Low over the rest of the country;

GEFS Week-2 Exceedance Prob. > 150mm
Valid: 20241106 – 20241112



- Probability to Exceed 150mm**
- Low across the country.

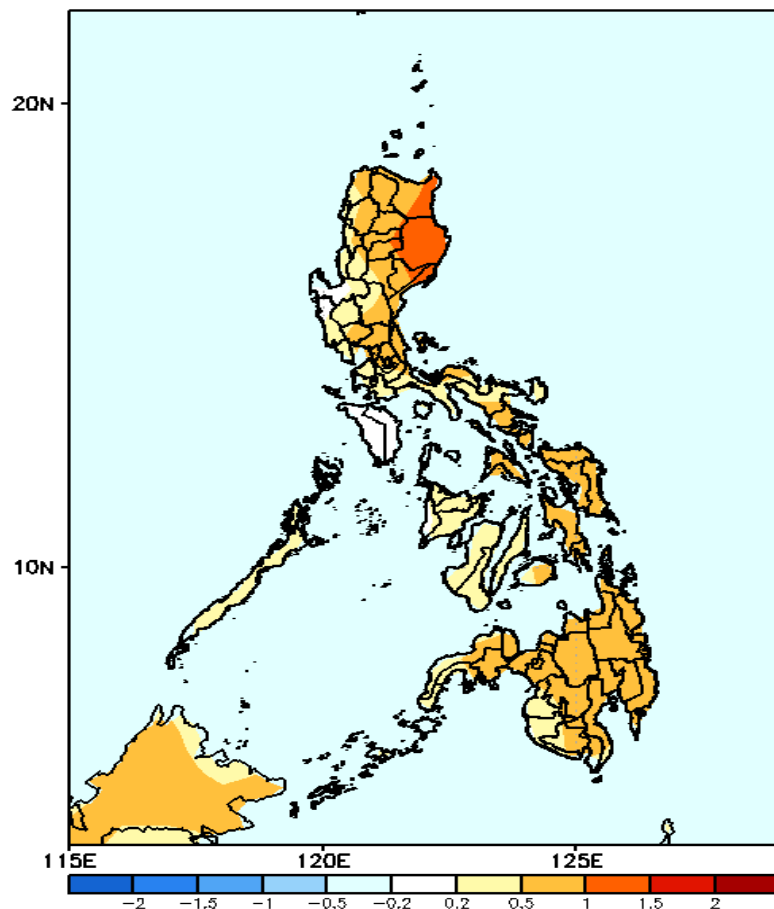
GEFS Week-2 Exceedance Prob. > 200mm
Valid: 20241106 – 20241112



- Probability to Exceed 200mm**
- Low across the country.

GEFS Week-1 & 2 Forecasts: T2m Anomaly

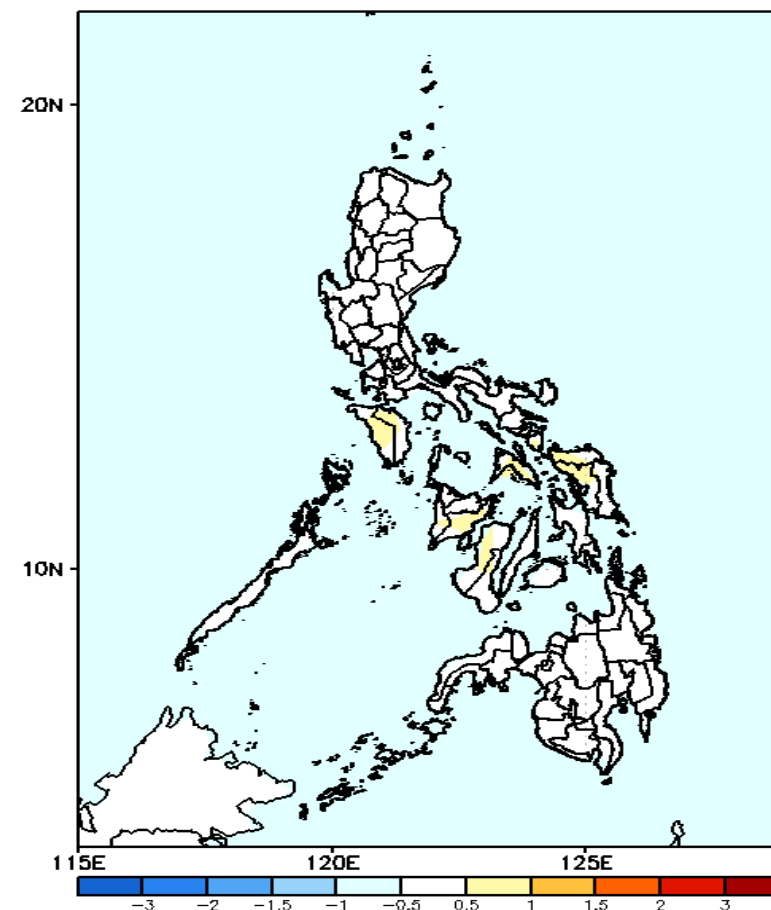
GEFS Week-1 T2m Anomaly
Valid: 20241030 — 20241105



2m Temperature Week 1: Oct 28- Nov 03, 2024

Slightly warmer to warmer than average surface air temperature will likely be experienced in most parts of the country.

GEFS Week-2 T2m Anomaly
Valid: 20241106 — 20241112



2m Temperature Week 2: Nov 04-10, 2024

Near to slightly warmer than average surface air temperature will likely be experienced in most parts of the country.