



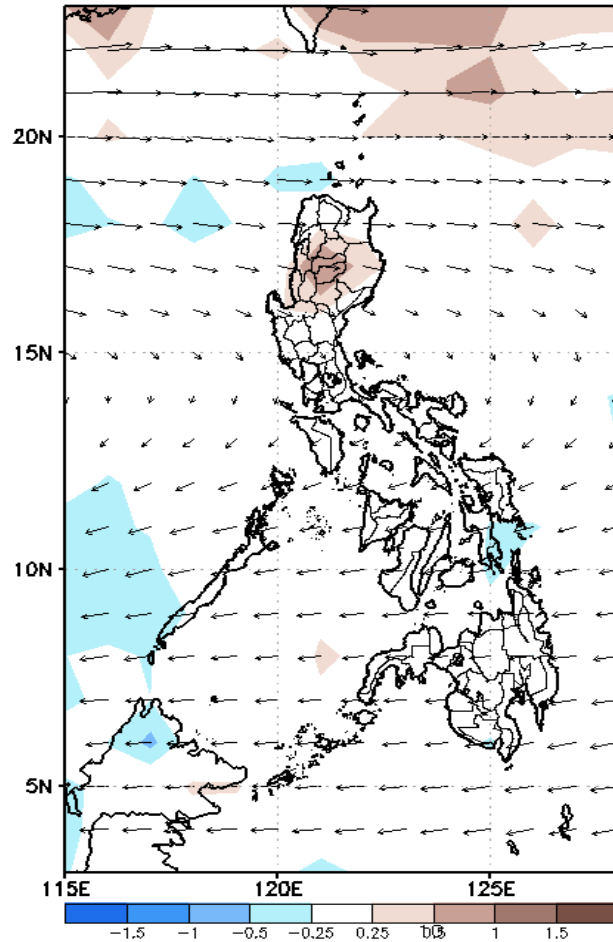
Week 1 & Week 2 Forecast for the Philippines using GEFS Model



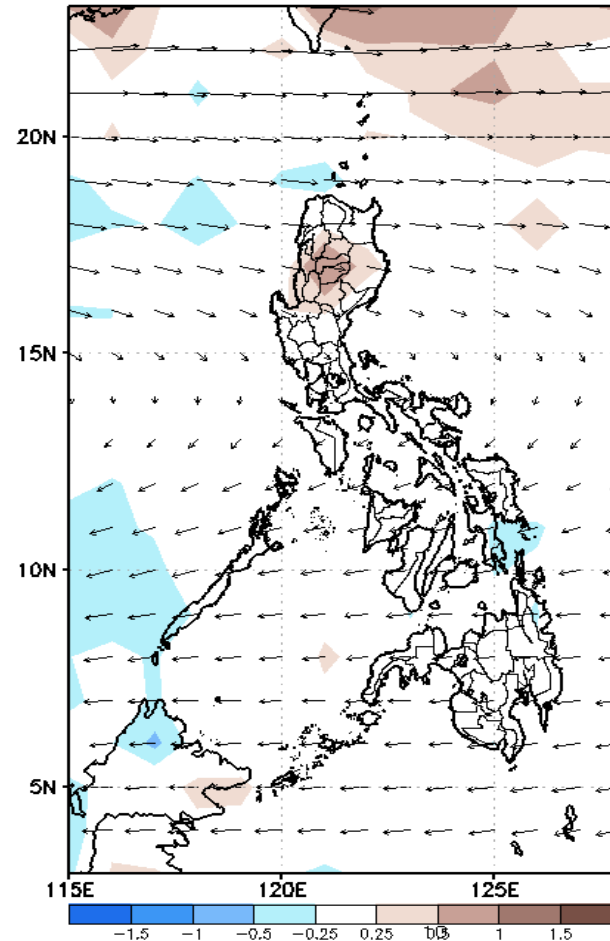
GEFS Week-1 Forecasts: Wind Forecast

Week 1: March 01-07, 2024

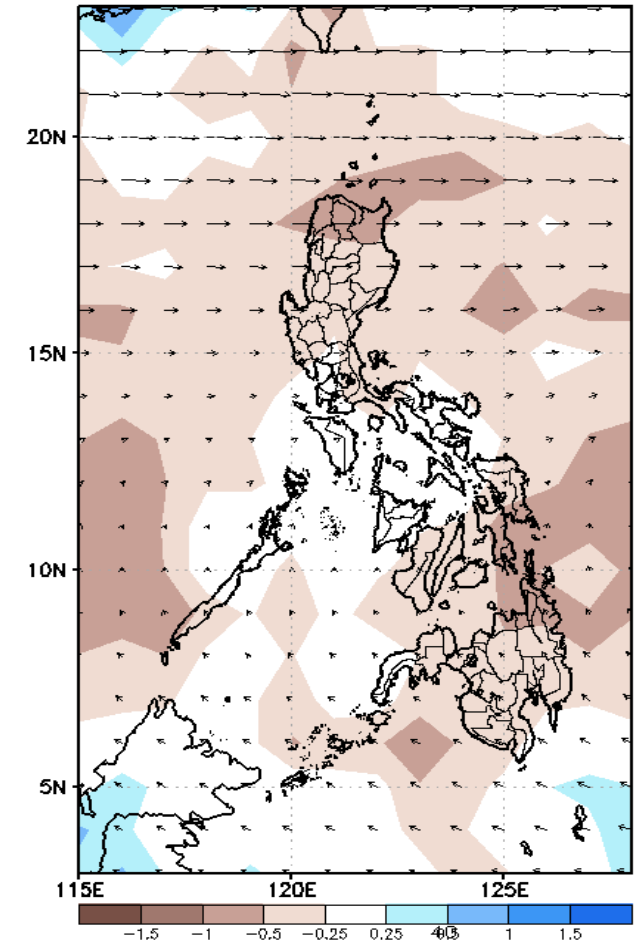
GEFS Week-1 850-hPa Divergence and Wind Anom.
Valid: 20240301 - 20240307



GEFS Week-1 700-hPa Divergence and Wind Anom.
Valid: 20240301 - 20240307



GEFS Week-1 200-hPa Divergence and Wind Anom.
Valid: 20240301 - 20240307



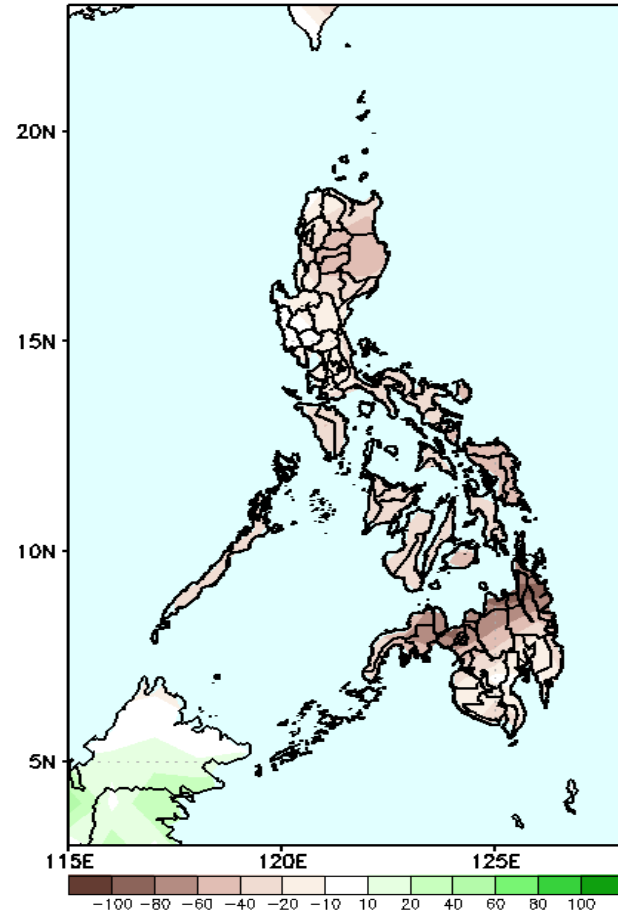
Easterlies will likely affect most parts of the country.

Precipitation Anomaly and Exceedance Probability > 25/50 mm



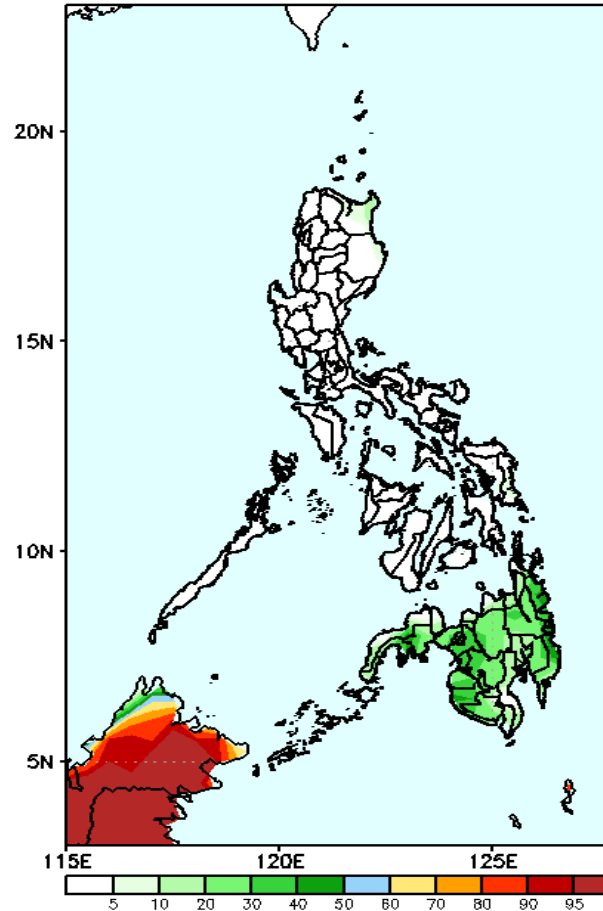
Week 1: March 01-07, 2024

GEFS Week-1 Precip Anomaly
Valid: 20240301 - 20240307



Rainfall deficit of up to 100mm in northern Mindanao and 20-80mm for the rest of the country.

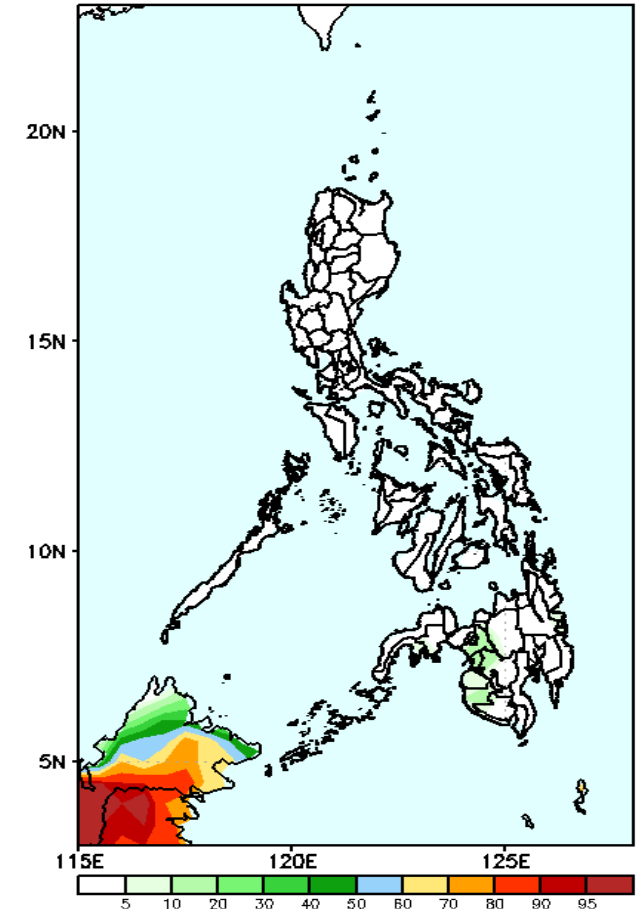
GEFS Week-1 Exceedance Prob. > 25mm
Valid: 20240301 - 20240307



Probability to Exceed 25mm

- Low to moderate over Mindanao;
- Low over the rest of the country.

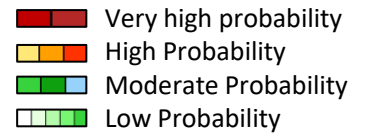
GEFS Week-1 Exceedance Prob. > 50mm
Valid: 20240301 - 20240307



Probability to Exceed 50mm

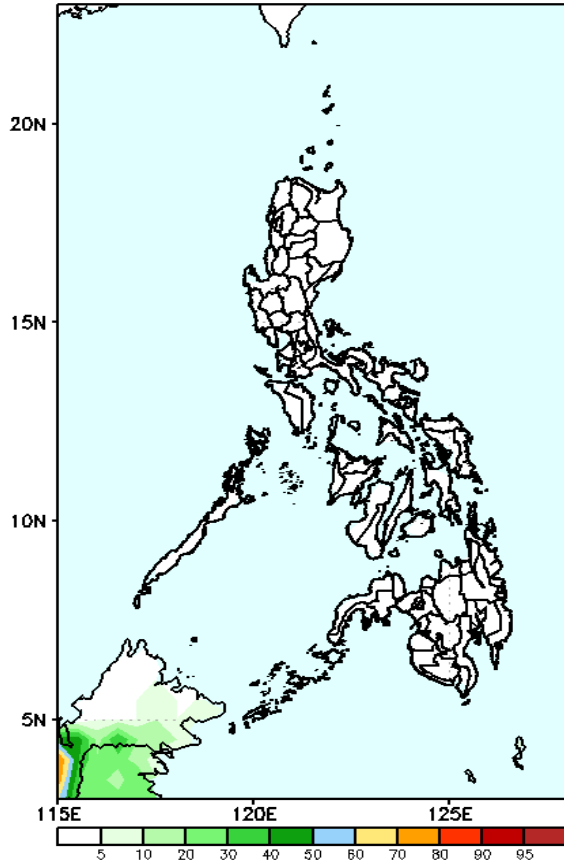
- Low across the country.

Exceedance Probability > 100/150/200 mm



Week 1: March 01-07, 2024

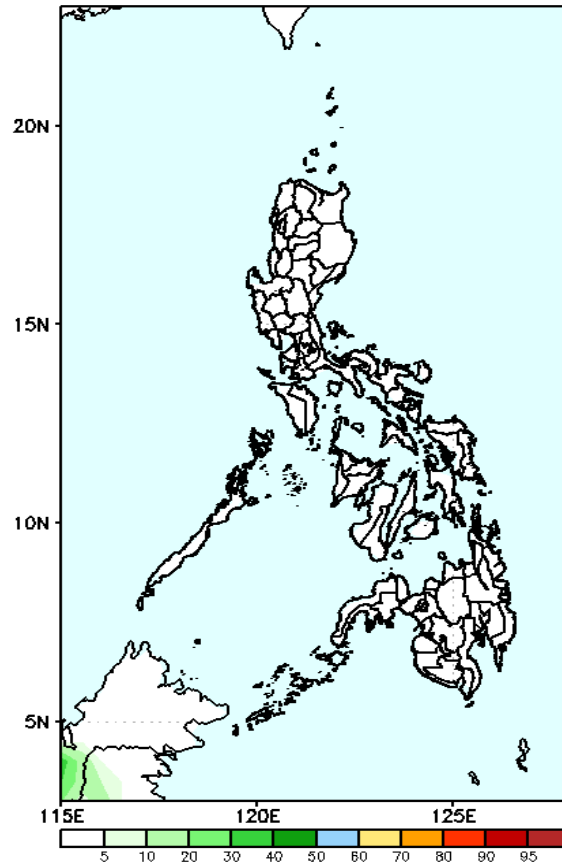
GEFS Week-1 Exceedance Prob. > 100mm
Valid: 20240301 – 20240307



Probability to Exceed 100mm

- Low across the country.

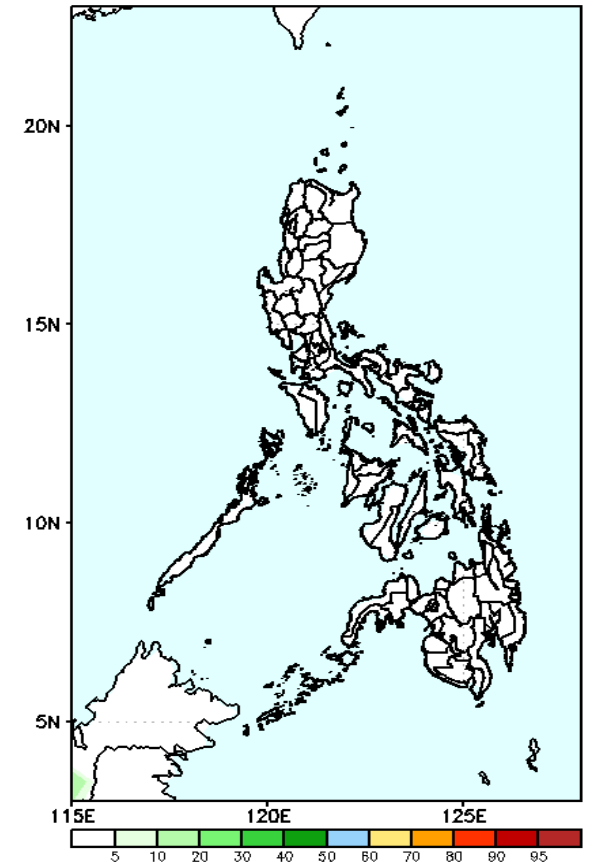
GEFS Week-1 Exceedance Prob. > 150mm
Valid: 20240301 – 20240307



Probability to Exceed 150mm

- Low across the country.

GEFS Week-1 Exceedance Prob. > 200mm
Valid: 20240301 – 20240307



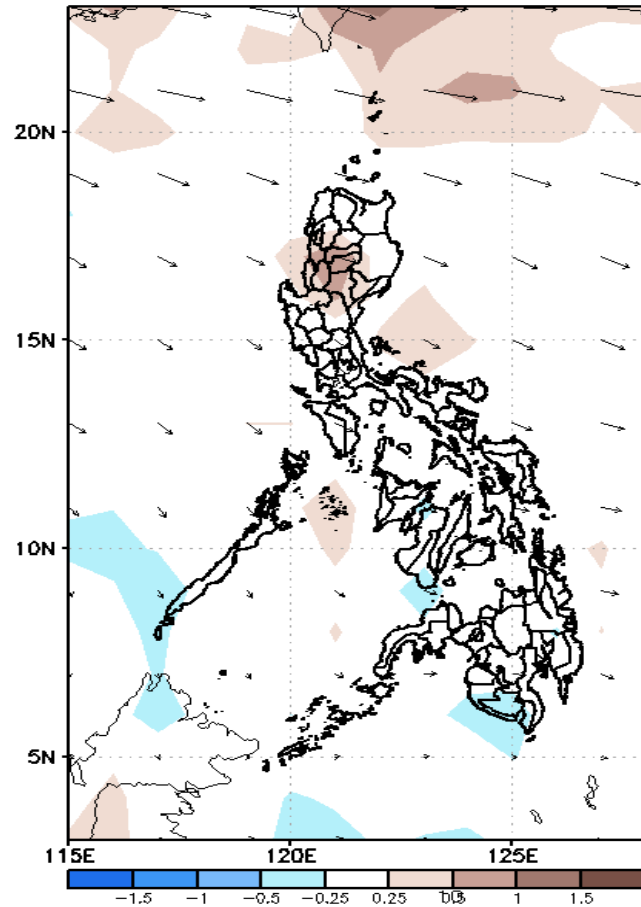
Probability to Exceed 200mm

- Low across the country.

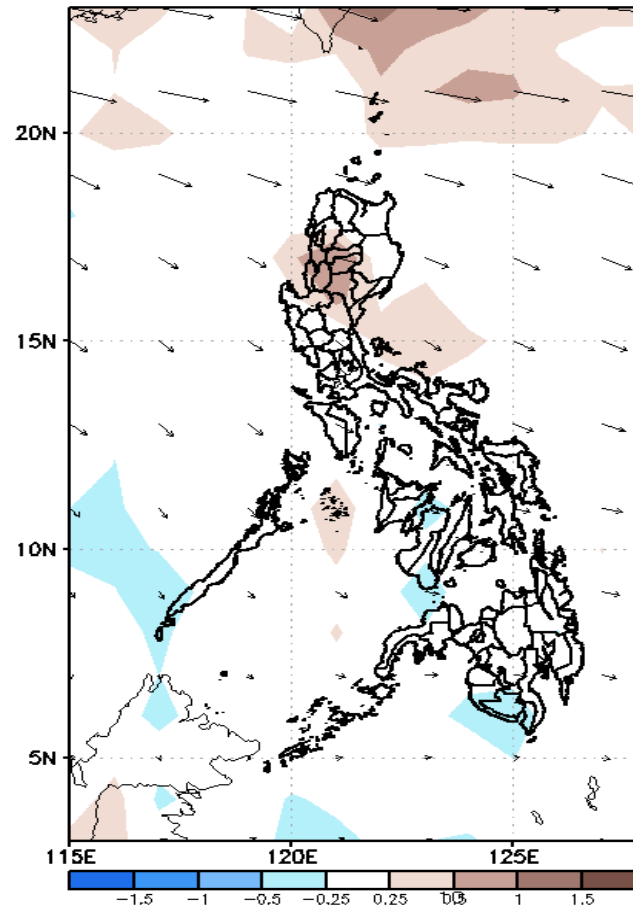
GEFS Week-2 Forecasts: Wind Forecast

Week 2: Mar 08-14, 2024

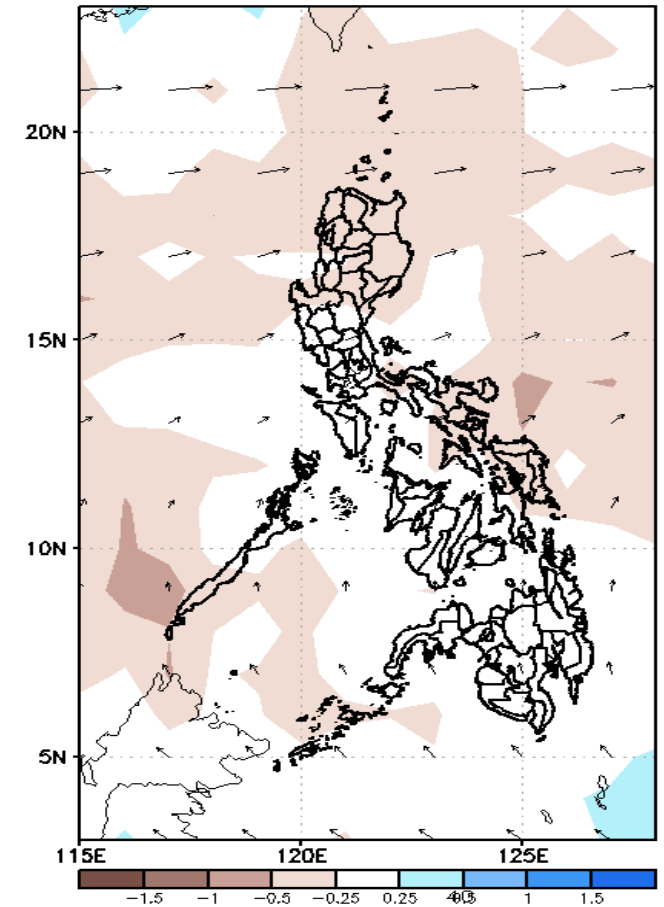
GEFS Week-2 850-hPa Divergence and Wind Anom
Valid: 20240308 - 20240314



GEFS Week-2 700-hPa Divergence and Wind Anom
Valid: 20240308 - 20240314

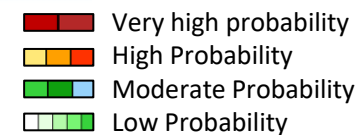


GEFS week-2 200-hPa Divergence and Wind Anom
Valid: 20240308 - 20240314



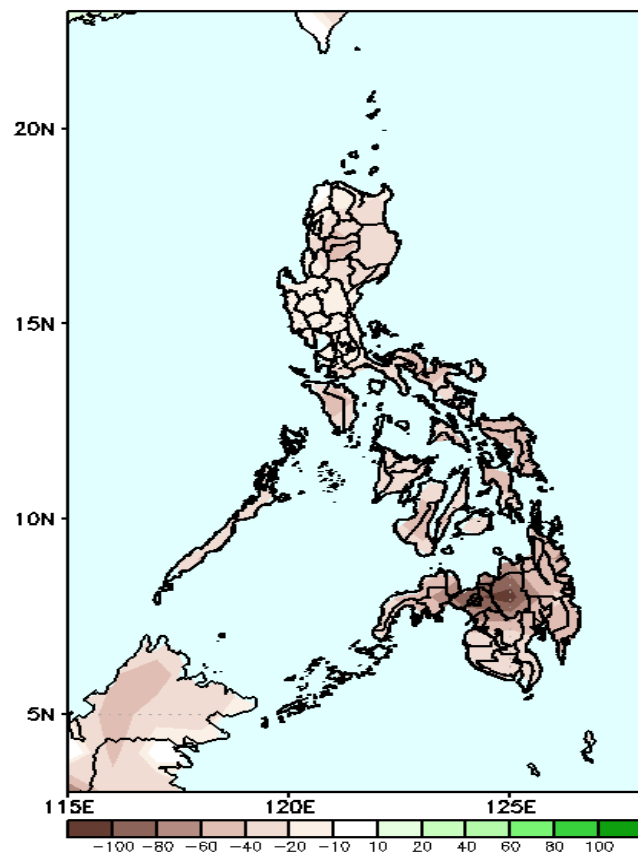
Northeast Monsoon will likely affect Northern Luzon; Easterlies for the rest of the country.

Precipitation Anomaly and Exceedance Probability > 25/50 mm



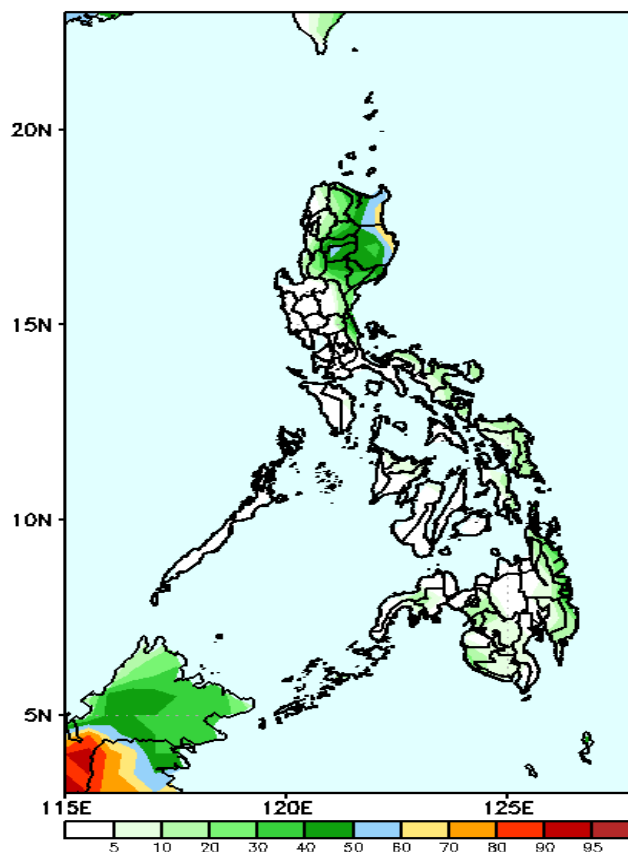
Week 2: Mar 08-14, 2024

GEFS Week-2 Precip Anomaly
Valid: 20240308 - 20240314



Rainfall deficit of up to 100mm in northern Mindanao and 20-80mm for the rest of the country.

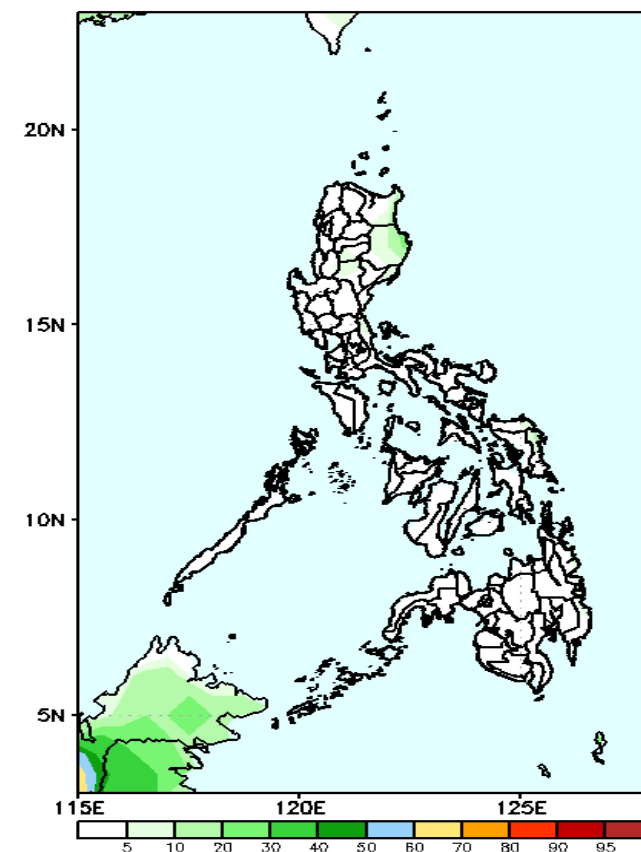
GEFS Week-2 Exceedance Prob. > 25mm
Valid: 20240308 - 20240314



Probability to Exceed 25mm

- Moderate to high over the eastern portions of Cagayan and Isabela;
- Low to moderate over the rest of Northern Luzon;
- Low over the rest of the country.

GEFS Week-2 Exceedance Prob. > 50mm
Valid: 20240308 - 20240314



Probability to Exceed 50mm

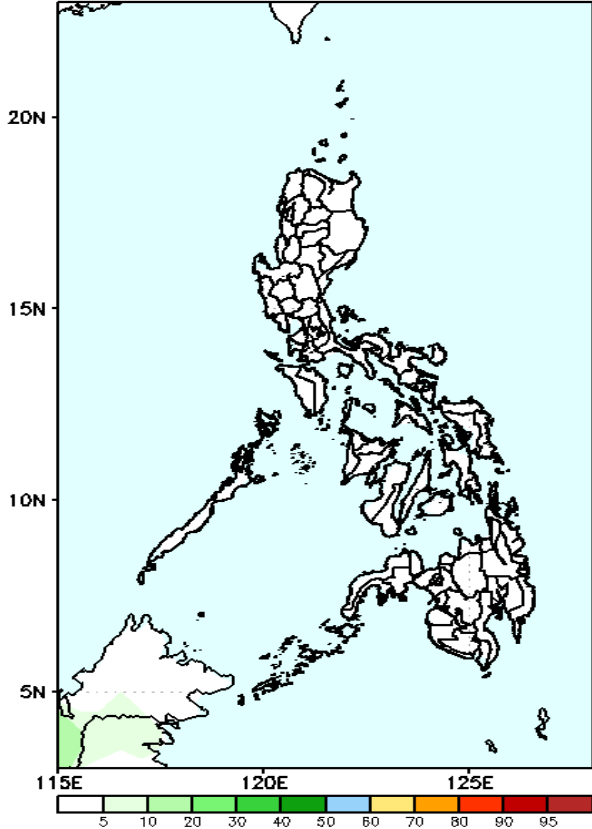
- Low across the country.

Exceedance Probability > 100/150/200 mm

Week 2: Mar 08-14, 2024

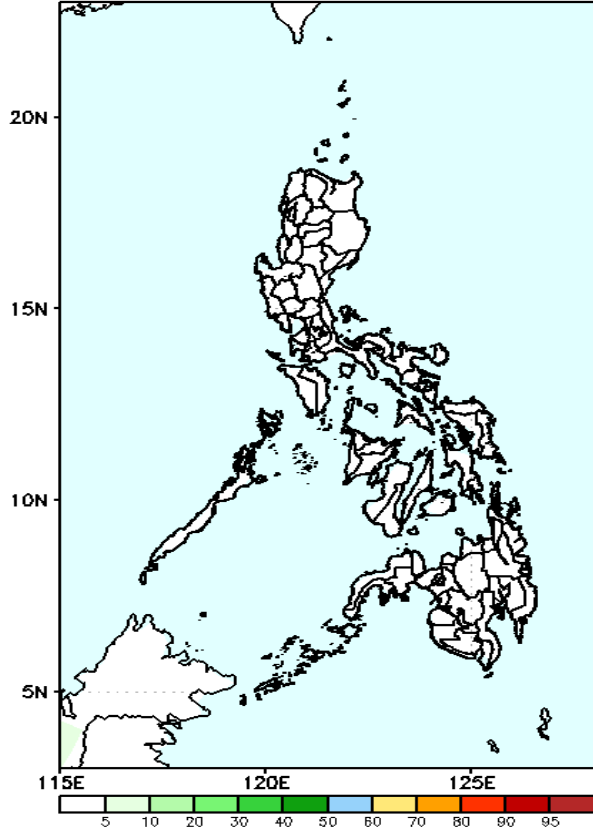
- Very high probability
- High Probability
- Moderate Probability
- Low Probability

GEFS Week-2 Exceedance Prob. > 100mm
Valid: 20240308 – 20240314



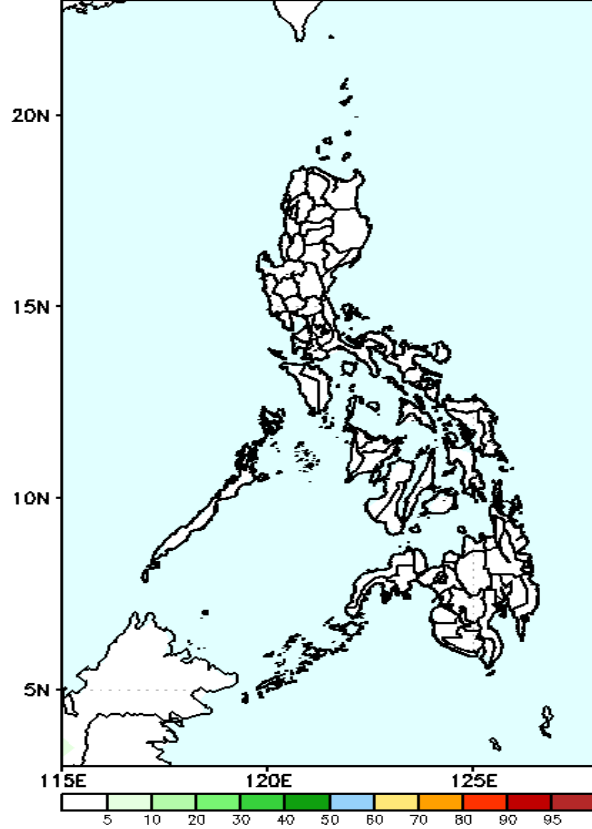
Probability to Exceed 100mm
• Low across the country.

GEFS Week-2 Exceedance Prob. > 150mm
Valid: 20240308 – 20240314



Probability to Exceed 150mm
• Low across the country.

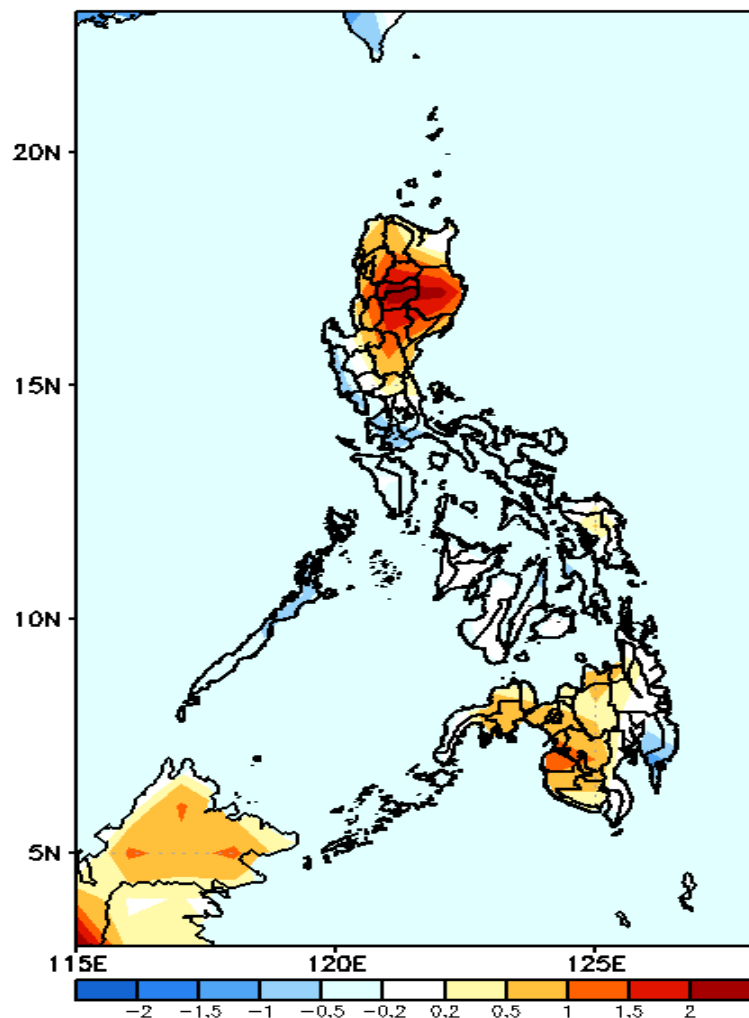
GEFS Week-2 Exceedance Prob. > 200mm
Valid: 20240308 – 20240314



Probability to Exceed 200mm
• Low across the country.

GEFS Week-1 & 2 Forecasts: T2m Anomaly

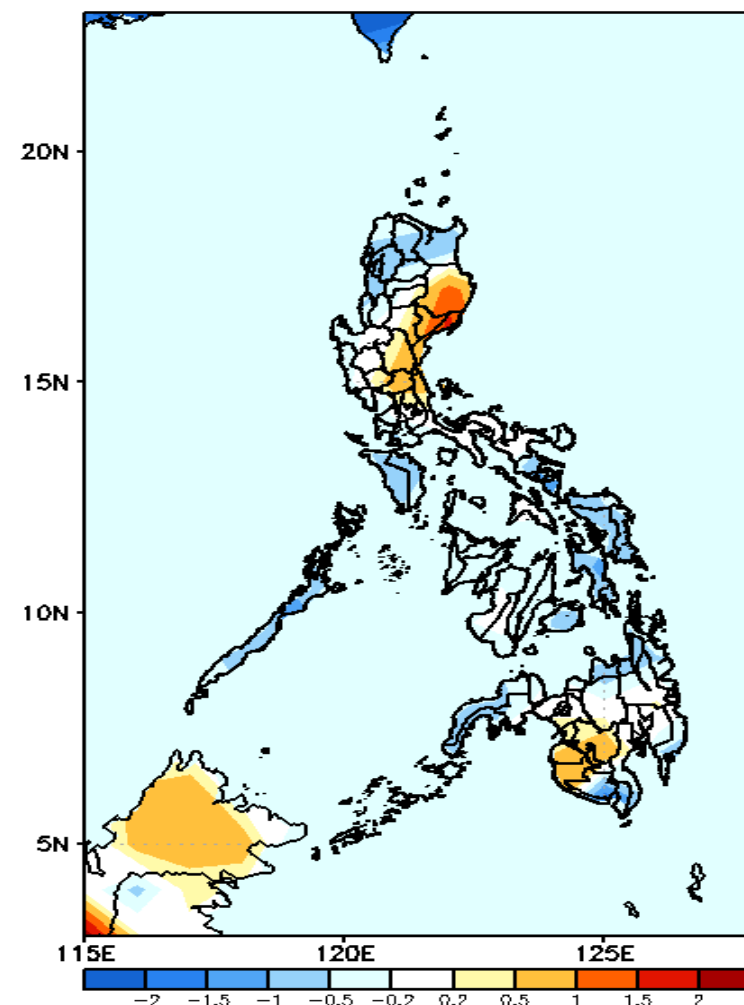
GEFS Week-1 T2m Anomaly
Valid: 20240301 — 20240307



2m Temperature Week 1: March 01-07, 2024

Slightly to warmer than average surface air temperature will likely be experienced in most parts of northern & central Luzon and Mindanao while average to slightly cooler for the rest of the country.

GEFS Week-2 T2m Anomaly
Valid: 20240308 — 20240314



2m Temperature Week 2: Mar 08-14, 2024

Average to cooler than average surface air temperature will likely be experienced in most parts of the country except in Isabela, western sections of Luzon, Maguindanao, Sultan Kudarat and North Cotabato where slightly average to warmer than average temperature is expected.