



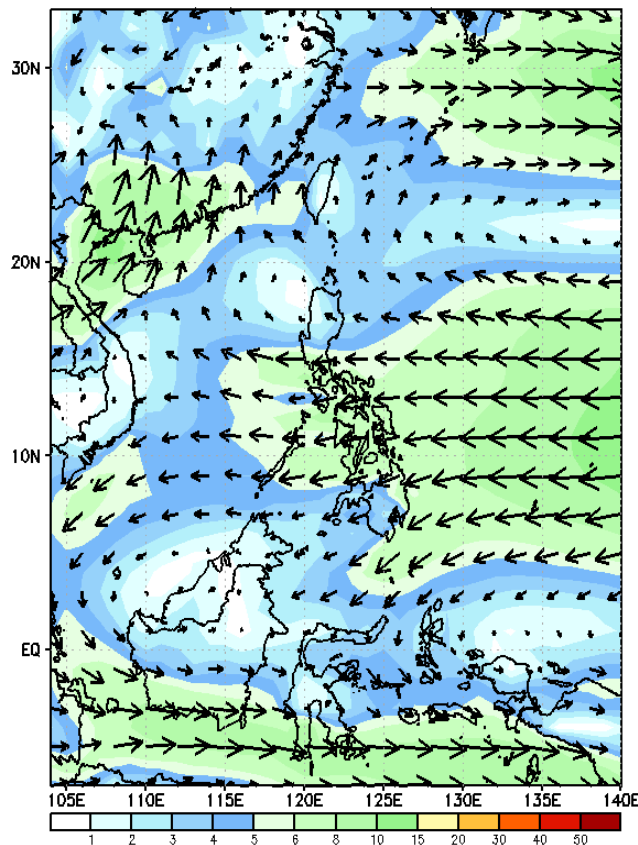
# Week 1 & Week 2 Forecast for the Philippines using GEFS Model



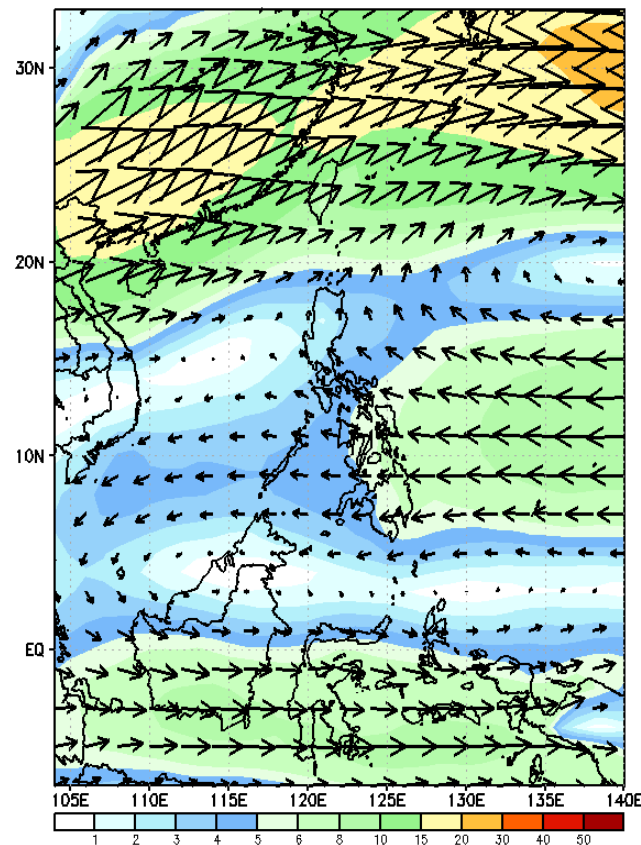
# GEFS Week-1 Forecasts: Wind Forecast

Week 1: February 02 - February 08, 2024

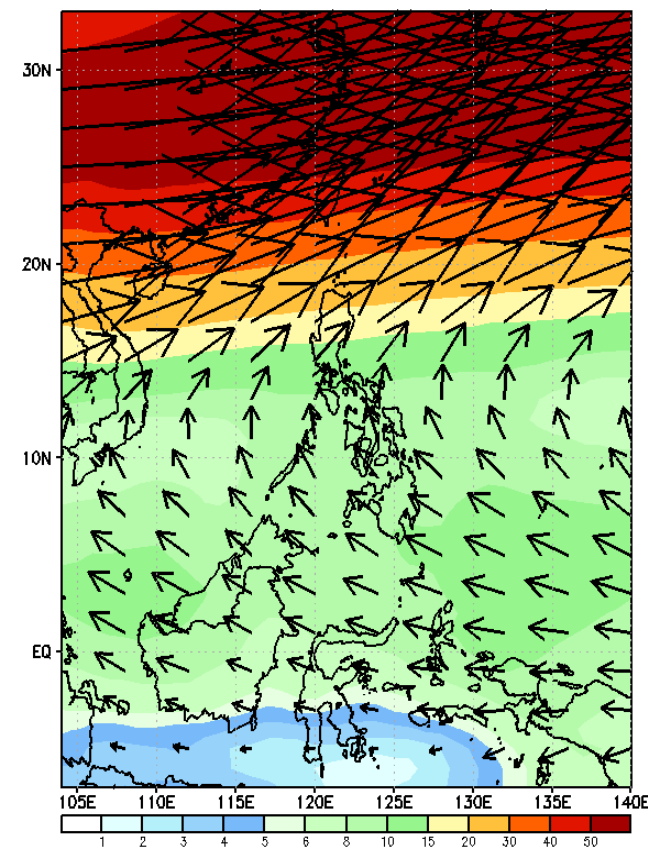
GEFS Week-1 850-hPa Wind Total  
Valid: 20240202 - 20240208



GEFS Week-1 700-hPa Wind Total  
Valid: 20240202 - 20240208



GEFS Week-1 200-hPa Wind Total  
Valid: 20240202 - 20240208



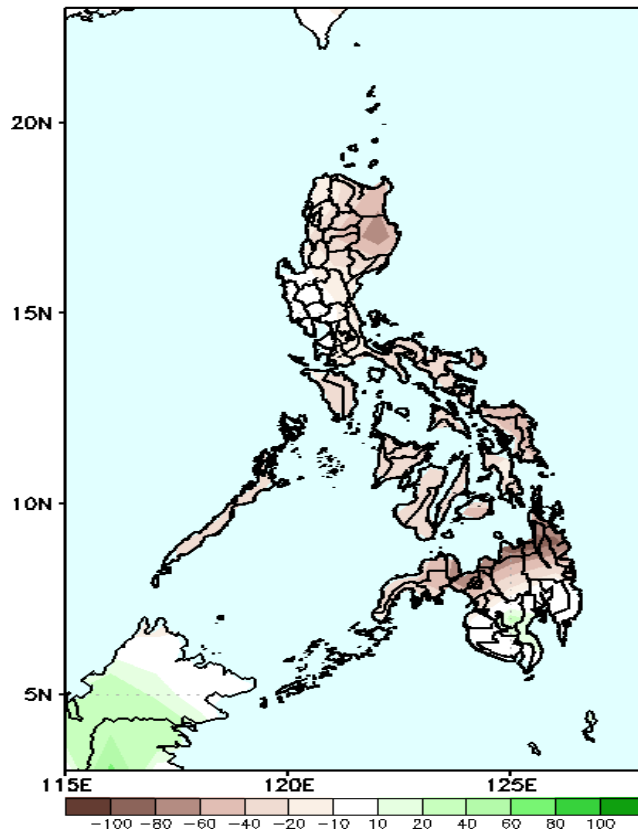
Northeast Monsoon affecting Extreme Northern Luzon; Easterlies affecting the rest of the country.

# Precipitation Anomaly and Exceedance Probability > 25/50 mm



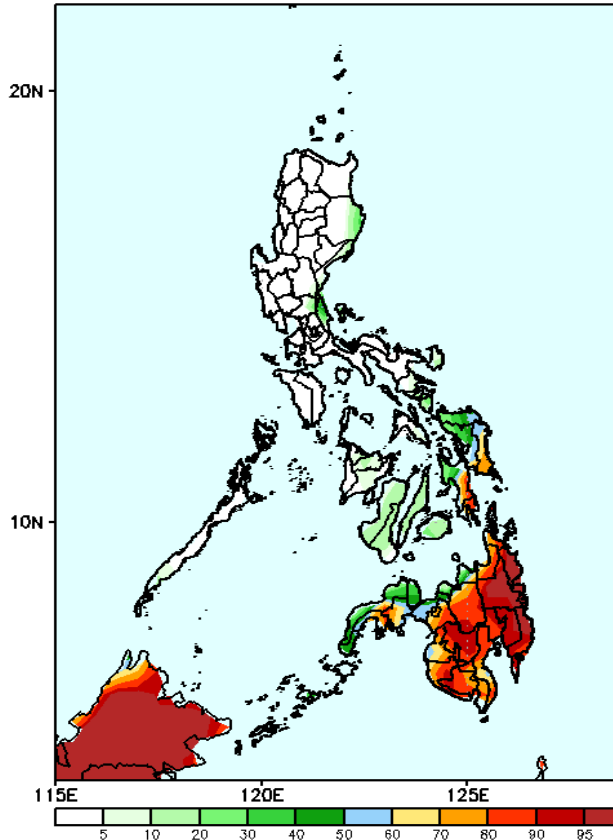
Week 1: February 02 - February 08, 2024

GEFS Week-1 Precip Anomaly  
Valid: 20240202 - 20240208



Rainfall deficit of 20-60mm in most parts of the country while 60-80mm in Misamis Oriental, Agusan del Norte and Surigao del Norte.

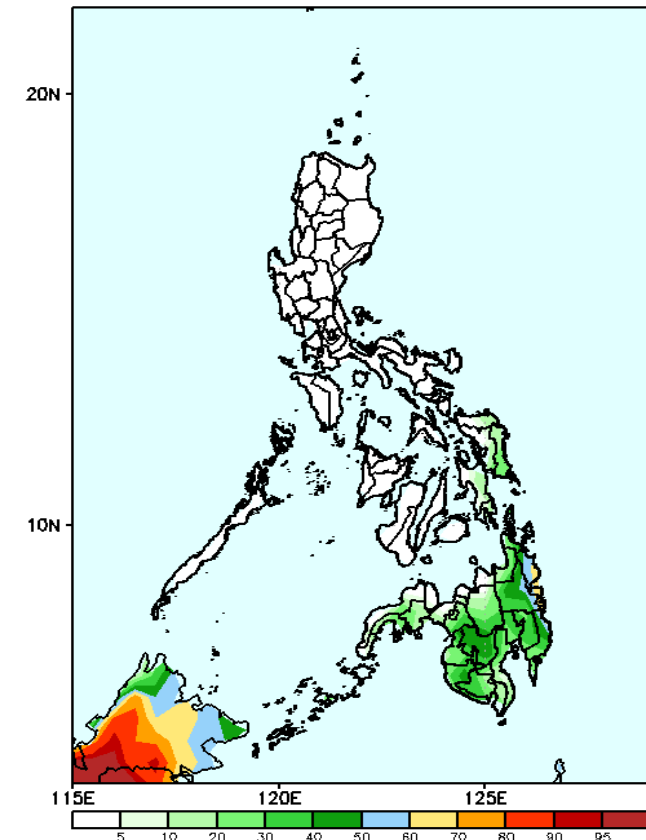
GEFS Week-1 Exceedance Prob. > 25mm  
Valid: 20240202 - 20240208



## Probability to Exceed 25mm

- High to very high over most parts of Mindanao;
- Moderate to high over Eastern Samar and Southern Leyte;
- Low to moderate over the rest of Eastern Visayas;
- Low over the rest of the country.

GEFS Week-1 Exceedance Prob. > 50mm  
Valid: 20240202 - 20240208

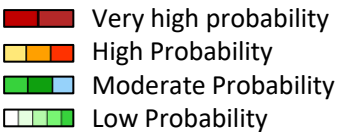


## Probability to Exceed 50 mm

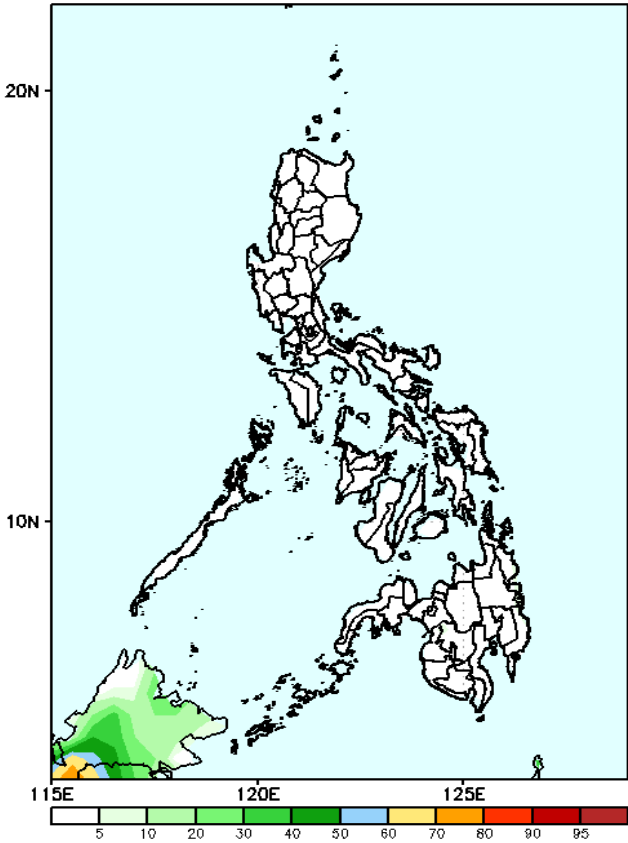
- Moderate to high in the eastern portion of Mindanao, and North Cotabato;
- Low over the rest of the country.

# Exceedance Probability > 100/150/200 mm

Week 1: February 02 - February 08, 2024

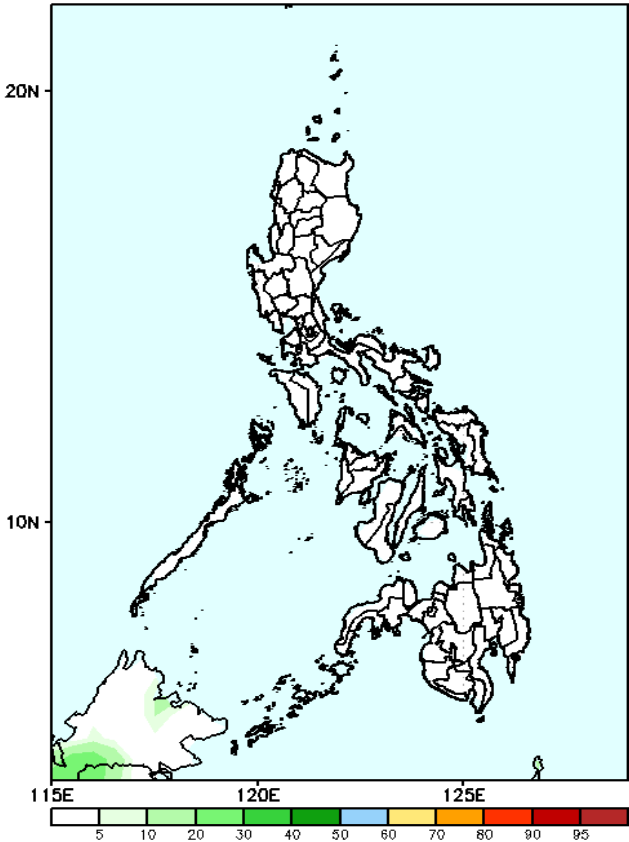


GEFS Week-1 Exceedance Prob. > 100mm  
Valid: 20240202 - 20240208



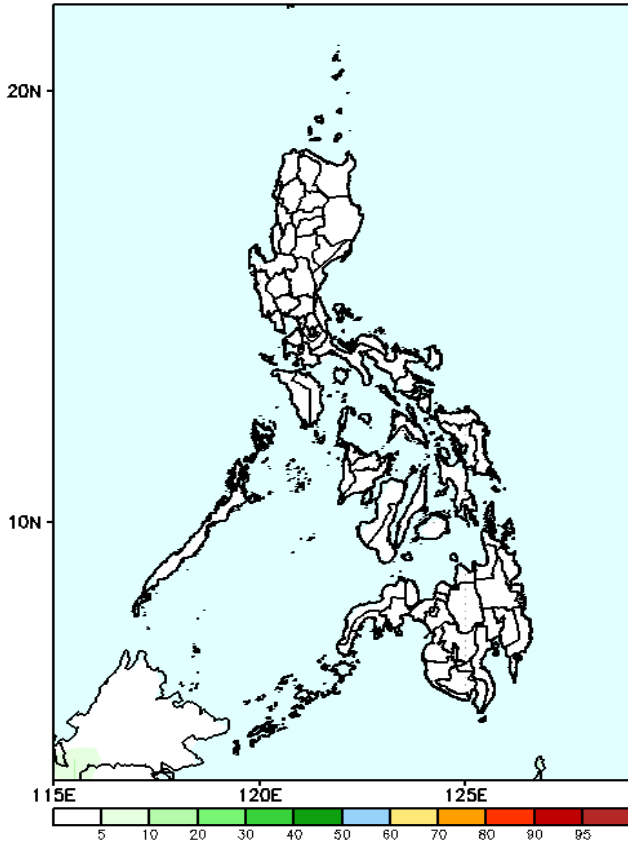
Probability to Exceed 100mm  
• Low across the country.

GEFS Week-1 Exceedance Prob. > 150mm  
Valid: 20240202 - 20240208



Probability to Exceed 150mm  
• Low across the country.

GEFS Week-1 Exceedance Prob. > 200mm  
Valid: 20240202 - 20240208

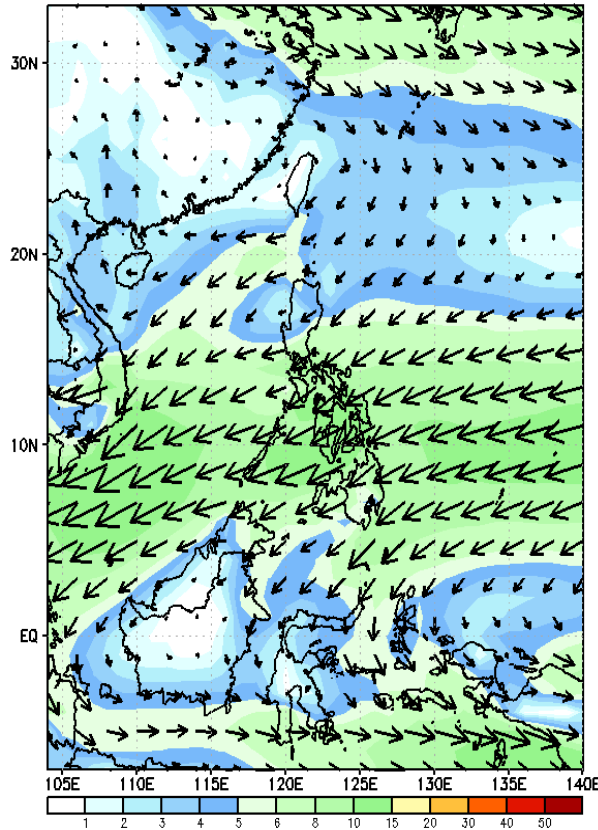


Probability to Exceed 200mm  
• Low across the country.

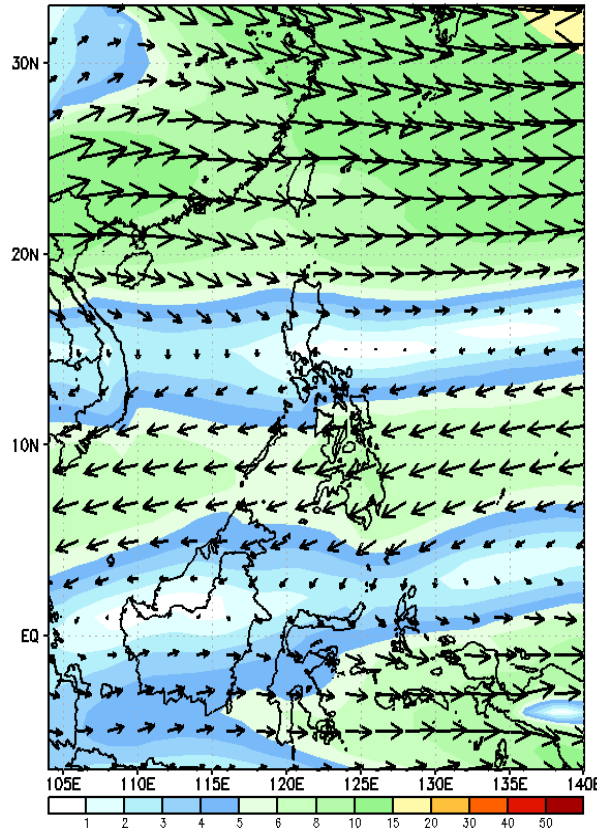
# GEFS Week-2 Forecasts: Wind Forecast

Week 2: February 09 - 15, 2024

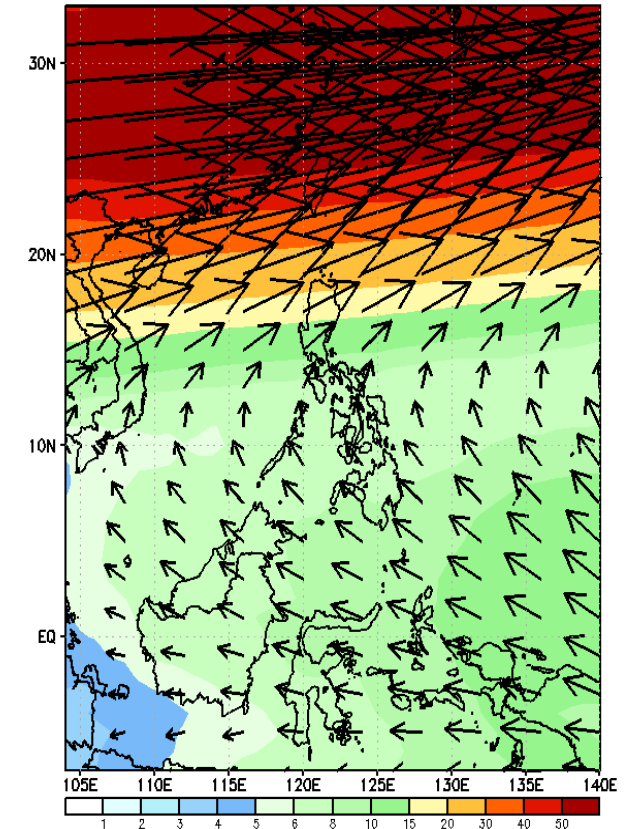
GEFS Week-2 850-hPa Wind Total  
Valid: 20240209 - 20240215



GEFS Week-2 700-hPa Wind Total  
Valid: 20240209 - 20240215



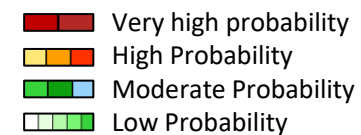
GEFS Week-2 200-hPa Wind Total  
Valid: 20240209 - 20240215



Northeast Monsoon affecting Luzon and Visayas; Easterlies affecting Mindanao.

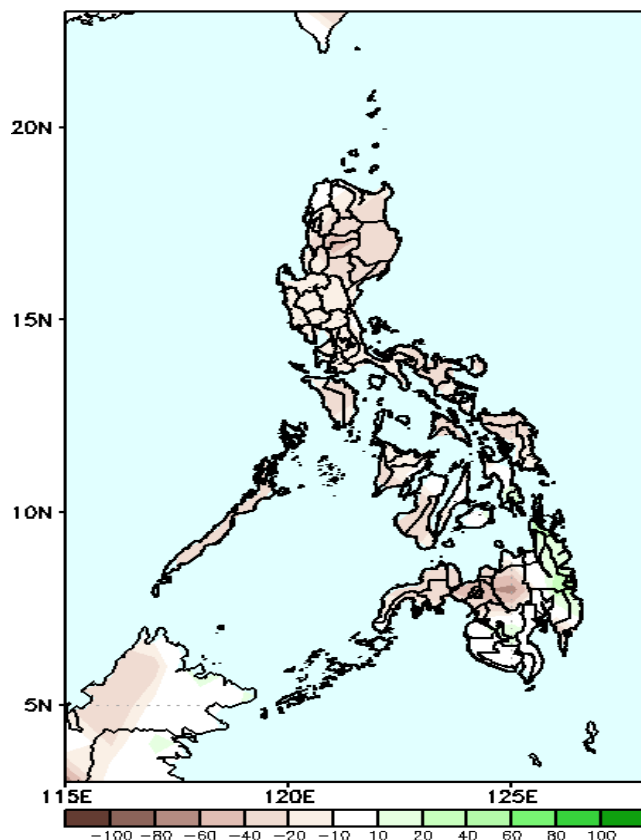


# Precipitation Anomaly and Exceedance Probability > 25/50 mm



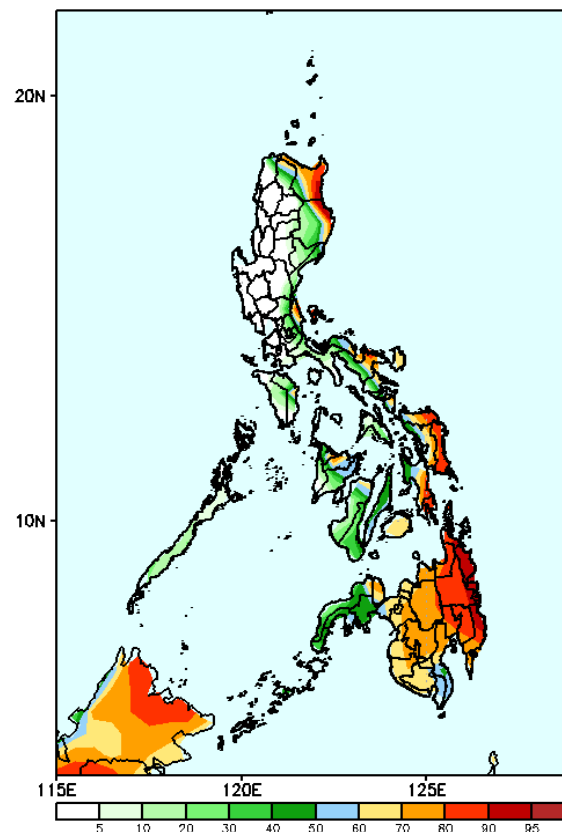
Week 2: February 09 - 15, 2024

GEFS Week-2 Precip Anomaly  
Valid: 20240209 - 20240215



Rainfall deficit of 20-60mm in most parts of the country except in most parts of Mindanao except in Eastern Mindanao where an increase of 20-60mm of rainfall is likely.

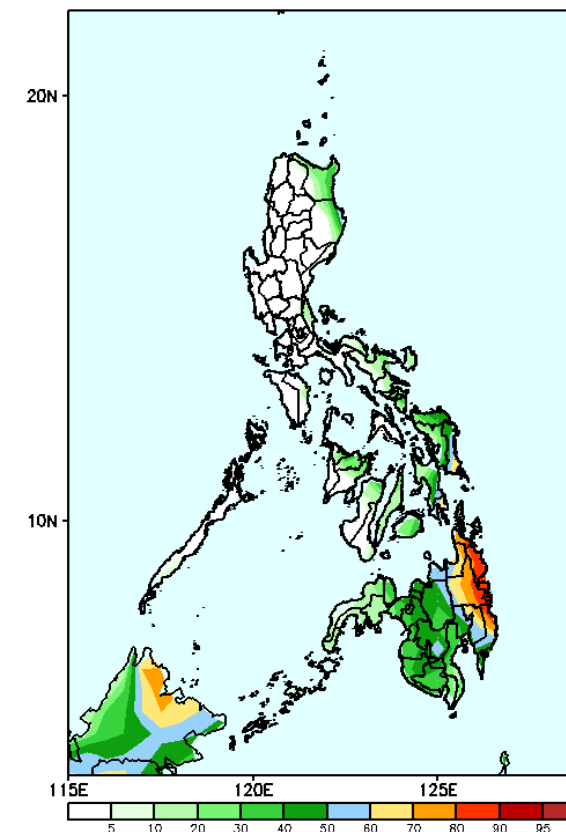
GEFS Week-2 Exceedance Prob. > 25mm  
Valid: 20240209 - 20240215



## Probability to Exceed 25mm

- High to very high over the eastern portions of Cagayan and Isabela, Eastern Samar and Eastern Mindanao;
- Moderate to high over Apayao, the rest of Cagayan and Isabela, northern Quezon, Bicol Region, Mindoro Oriental, the rest of Visayas and Zamboanga Peninsula;
- Low over the rest of Luzon.

GEFS Week-2 Exceedance Prob. > 50mm  
Valid: 20240209 - 20240215



## Probability to Exceed 50mm

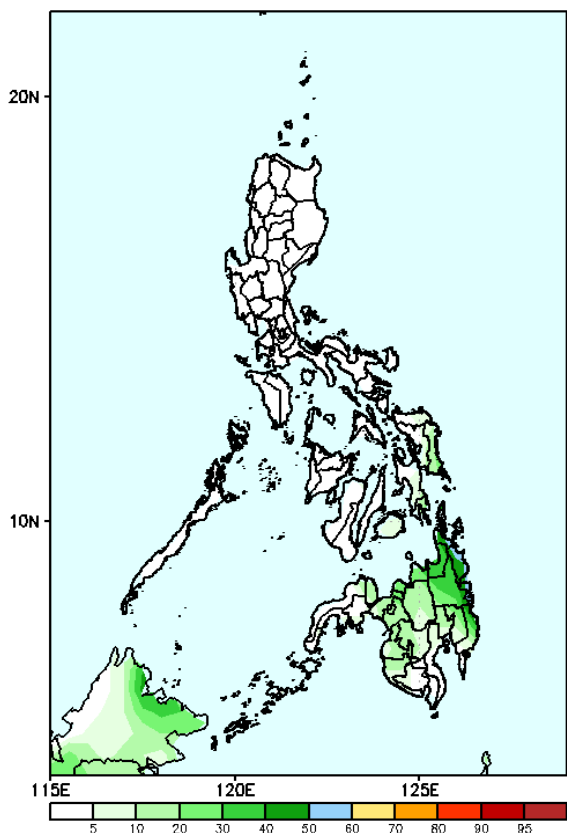
- High to very high over Caraga;
- Moderate to high over Eastern Samar, Southern Leyte, and the rest of Mindanao except Zamboanga Peninsula;
- Low elsewhere.

# Exceedance Probability > 100/150/200 mm

Week 2: February 09 - 15, 2024

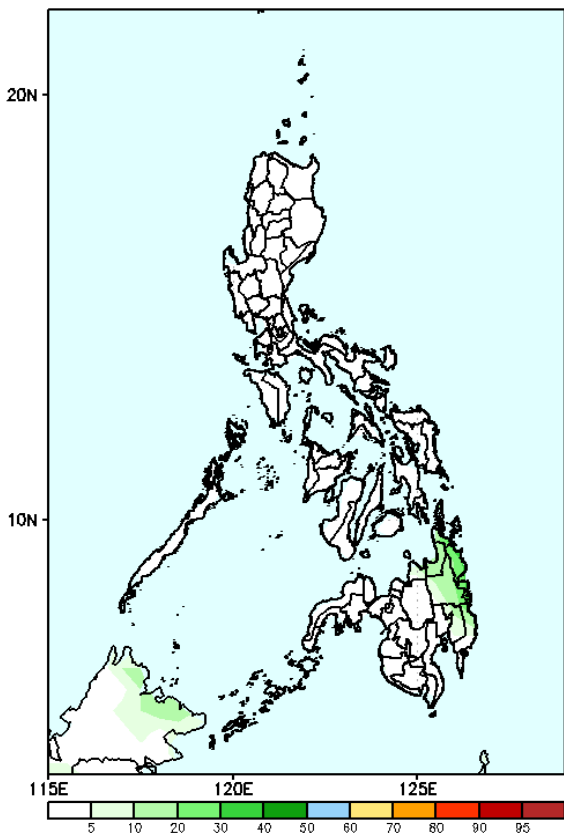
- Very high probability
- High Probability
- Moderate Probability
- Low Probability

GEFS Week-2 Exceedance Prob. > 100mm  
Valid: 20240209 - 20240215



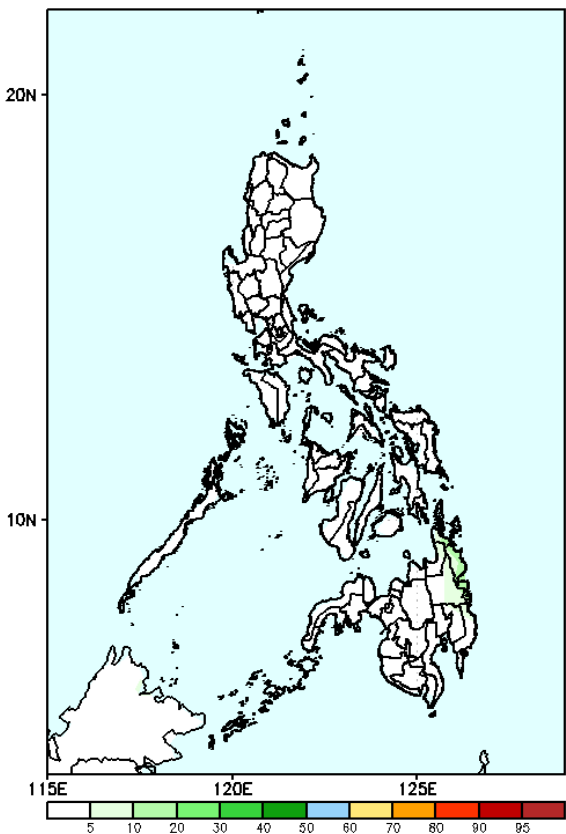
**Probability to Exceed 100mm**  
• Low across the country.

GEFS Week-2 Exceedance Prob. > 150mm  
Valid: 20240209 - 20240215



**Probability to Exceed 150mm**  
• Low across the country.

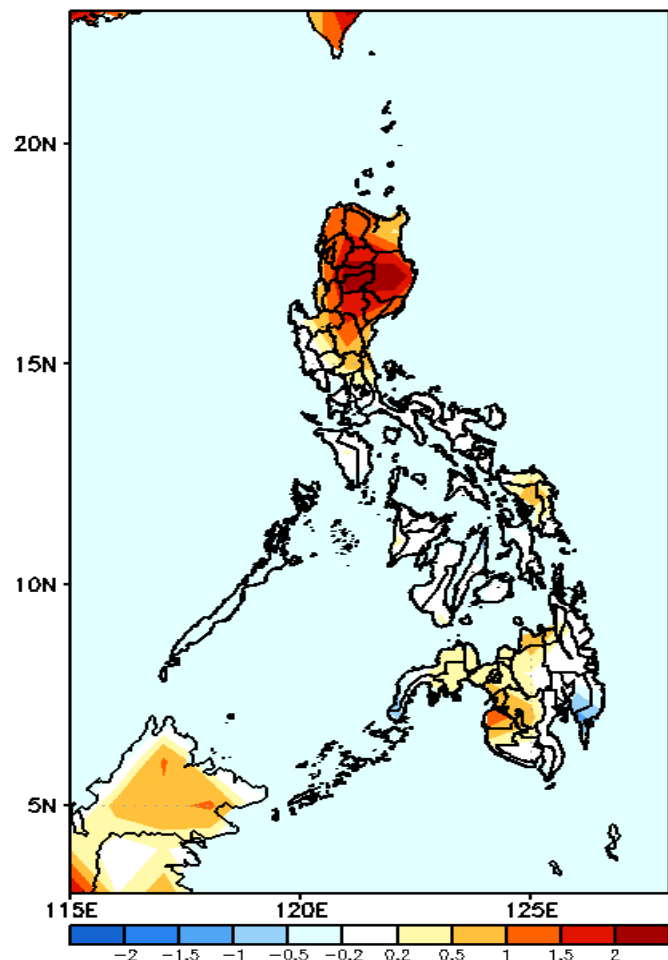
GEFS Week-2 Exceedance Prob. > 200mm  
Valid: 20240209 - 20240215



**Probability to Exceed 200mm**  
• Low across the country.

# GEFS Week-1 & 2 Forecasts: T2m Anomaly

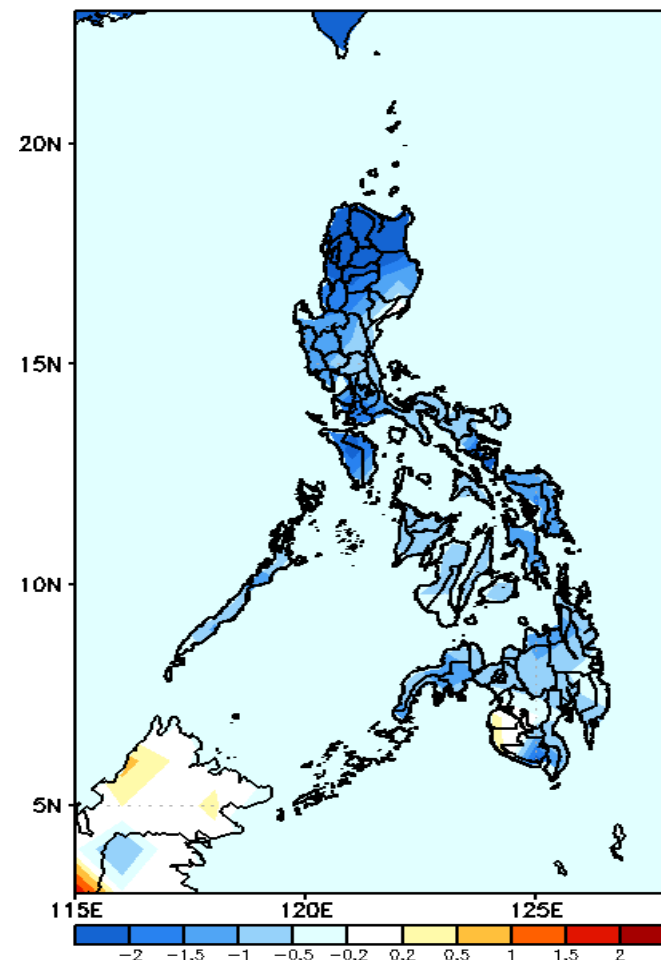
GEFS Week-1 T2m Anomaly  
Valid: 20240202 - 20240208



## 2m Temperature Week 1: February 02 - 08, 2024

Near to warmer than average surface air temperature will likely be experienced in most parts country except in Davao Oriental and Davao de Oro where slightly cooler than average temperature is expected.

GEFS Week-2 T2m Anomaly  
Valid: 20240209 - 20240215



## 2m Temperature Week 2: February 09 - 15, 2024

Near to cooler than average surface air temperature will likely be experienced in most parts of the country except in Maguindanao and Sultan Kudarat where slightly warmer than average temperature is expected.

