



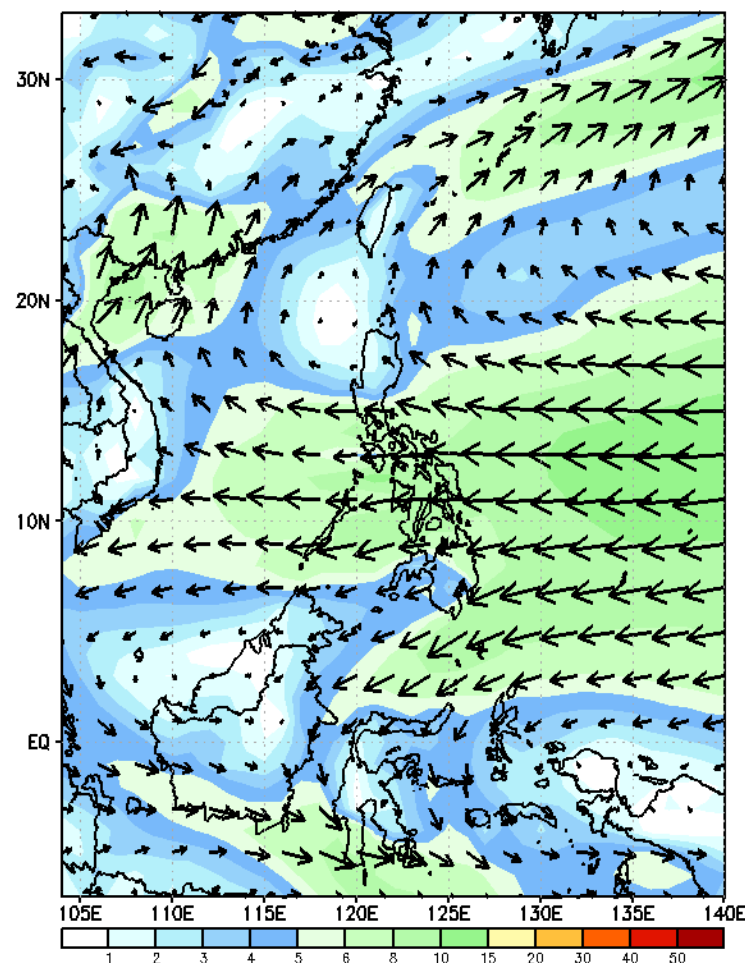
# Week 1 & Week 2 Forecast for the Philippines using GEFS Model



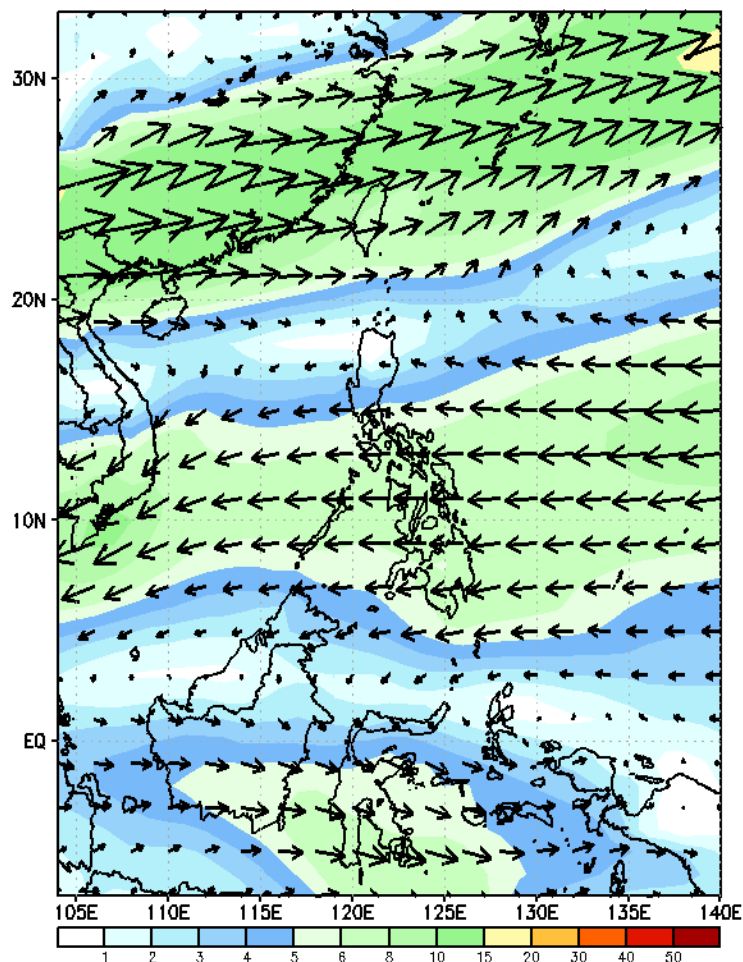
# GEFS Week-1 Forecasts: Wind Forecast

Week 1: April 03-09, 2024

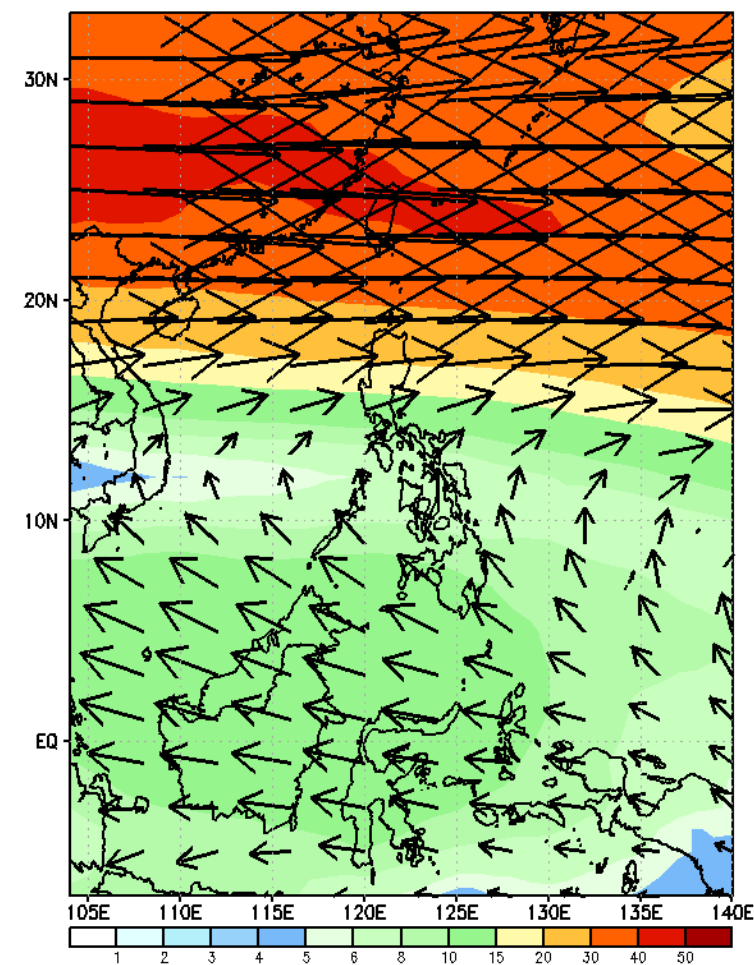
GEFS Week-1 850-hPa Wind Total  
Valid: 20240403 - 20240409



GEFS Week-1 700-hPa Wind Total  
Valid: 20240403 - 20240409

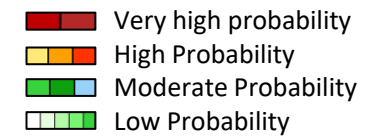


GEFS Week-1 200-hPa Wind Total  
Valid: 20240403 - 20240409



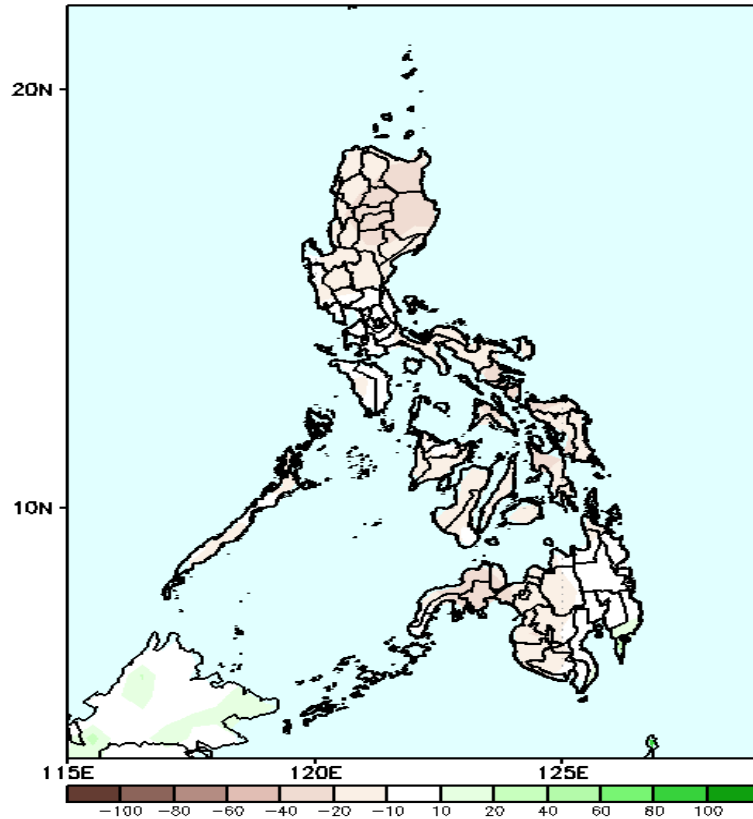
Easterlies continue to affect most parts of the country. Expect dry and warm days during the forecast period.

# Precipitation Anomaly and Exceedance Probability > 25/50 mm



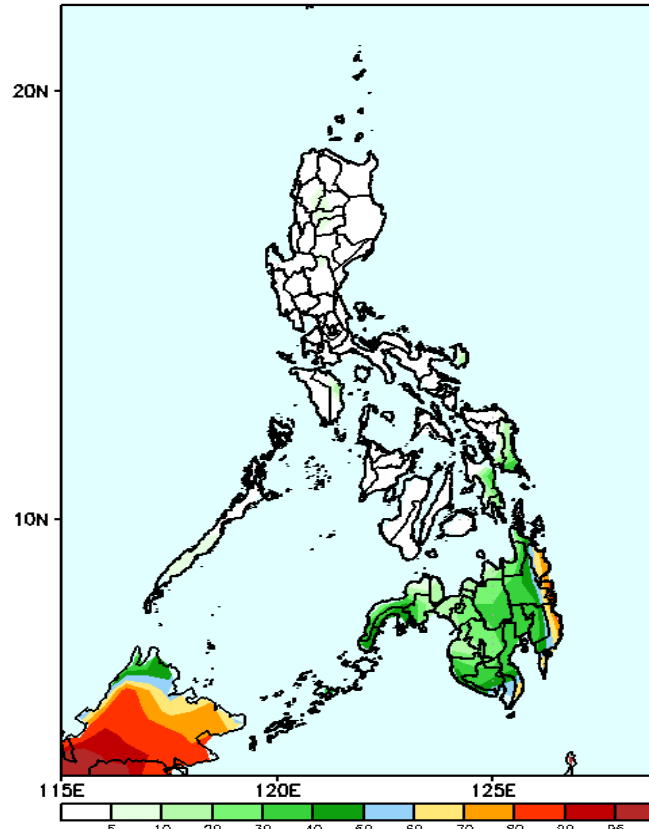
Week 1: April 03-09, 2024

GEFS Week-1 Precip Anomaly  
Valid: 20240403 - 20240409



Rainfall deficit of 10-30mm in most parts of the country is expected.

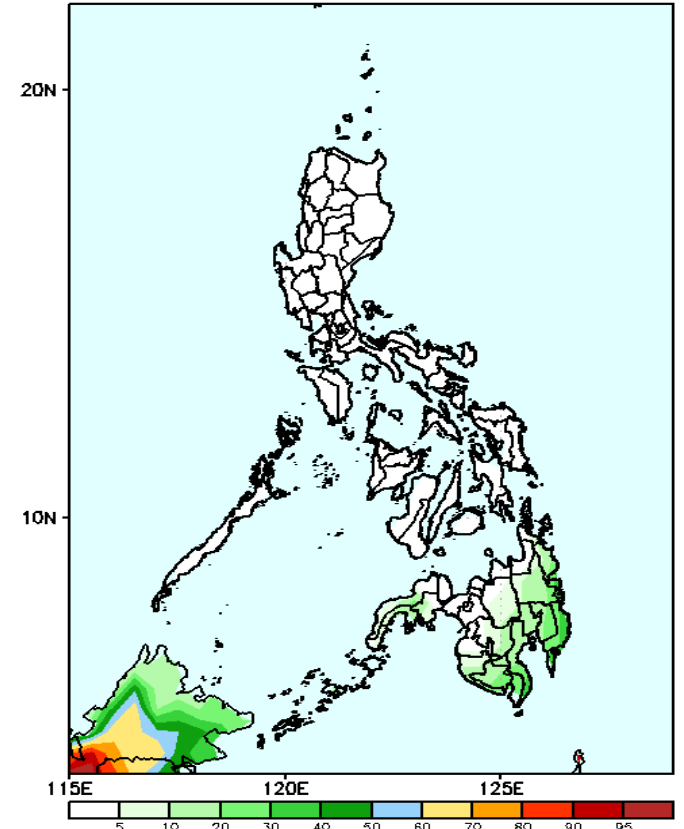
GEFS Week-1 Exceedance Prob. > 25mm  
Valid: 20240403 - 20240409



## Probability to Exceed 25mm

- Moderate to high over Surigao provinces and Davao Oriental;
- Low to moderate over the rest of Mindanao;
- Low over the rest of the country.

GEFS Week-1 Exceedance Prob. > 50mm  
Valid: 20240403 - 20240409



## Probability to Exceed 50mm

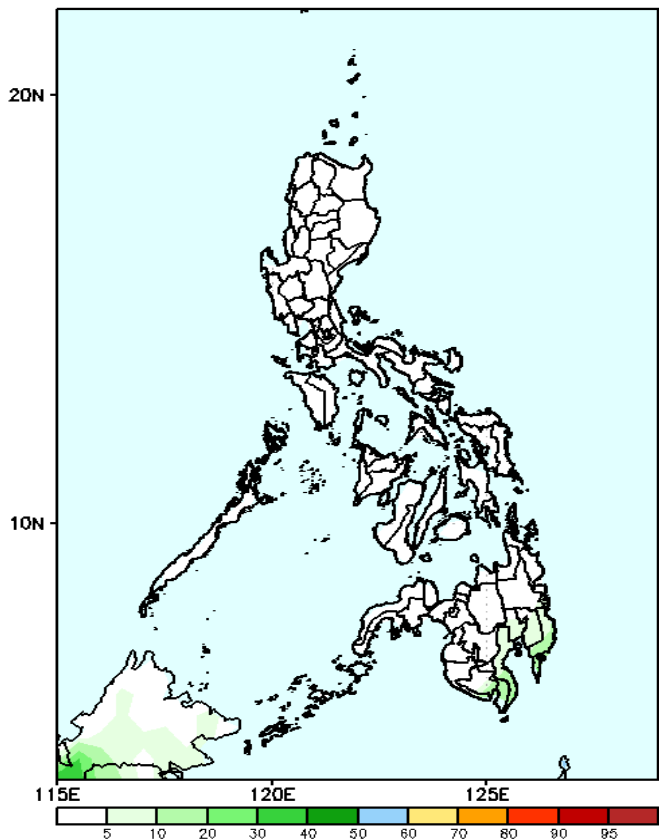
- Low across the country.

# Exceedance Probability > 100/150/200 mm

Week 1: April 03-09, 2024

- Very high probability
- High Probability
- Moderate Probability
- Low Probability

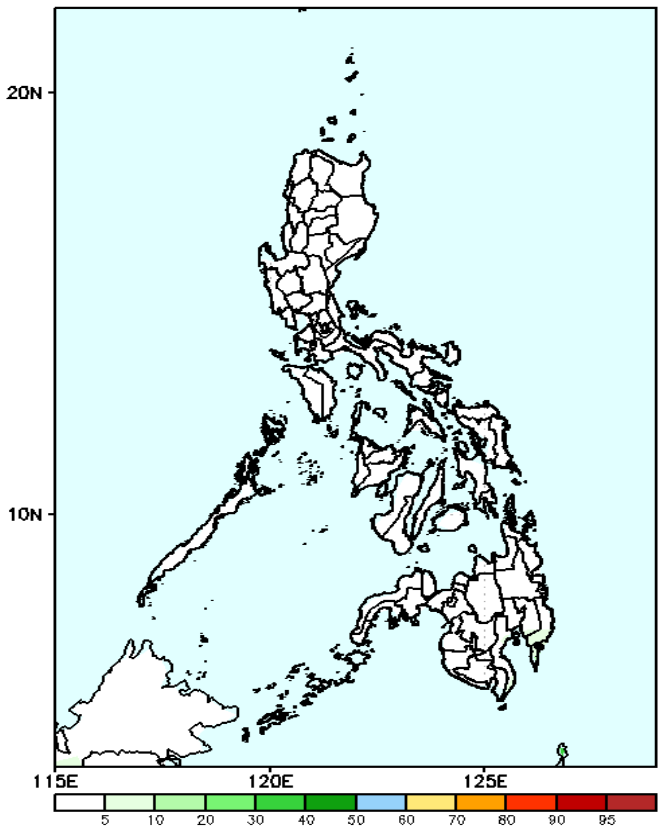
GEFS Week-1 Exceedance Prob. > 100mm  
Valid: 20240403 - 20240409



Probability to Exceed 100mm

- Low across the country.

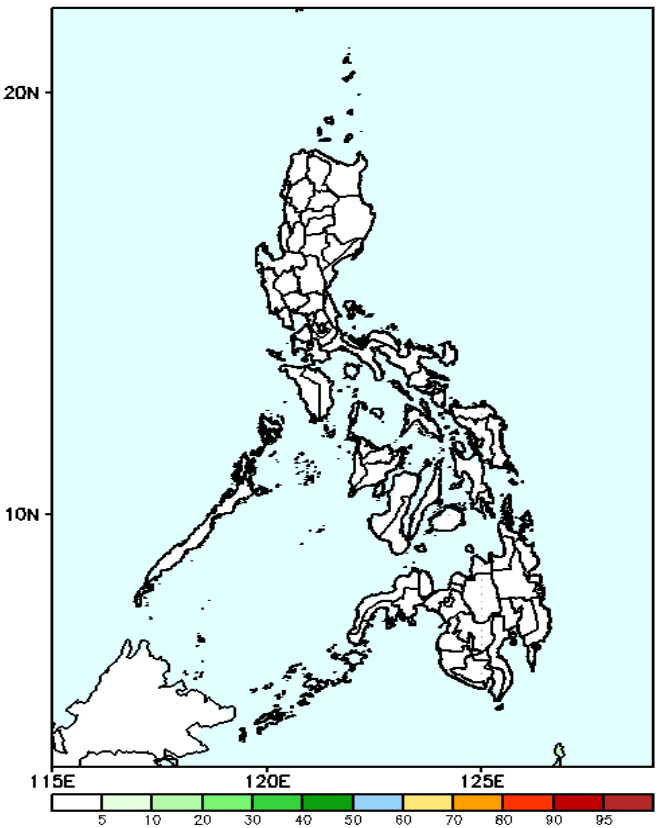
GEFS Week-1 Exceedance Prob. > 150mm  
Valid: 20240403 - 20240409



Probability to Exceed 150mm

- Low across the country.

GEFS Week-1 Exceedance Prob. > 200mm  
Valid: 20240403 - 20240409



Probability to Exceed 200mm

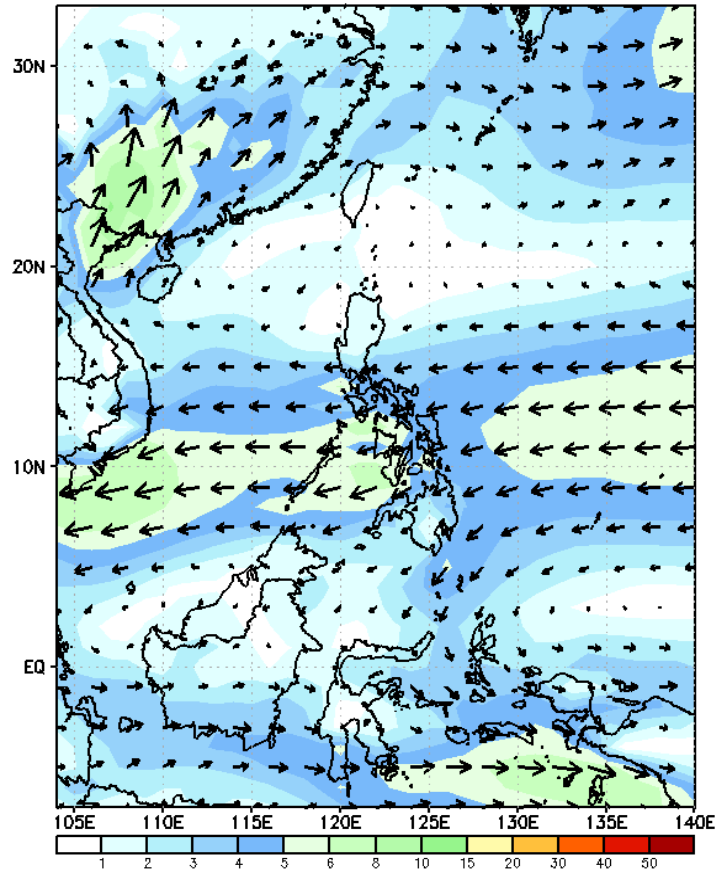
- Low across the country.



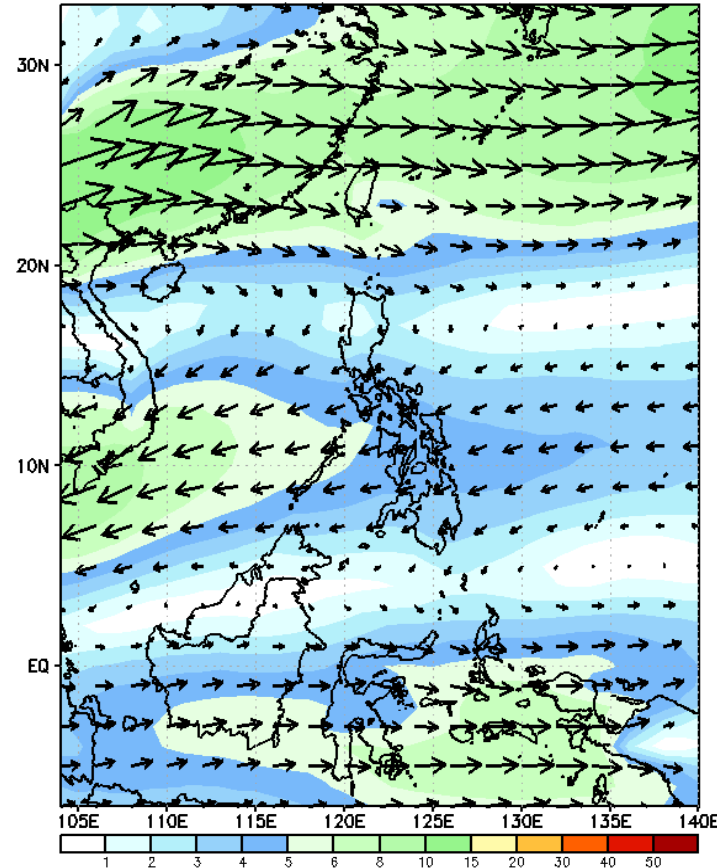
# GEFS Week-2 Forecasts: Wind Forecast

Week 2: Apr 10-16, 2024

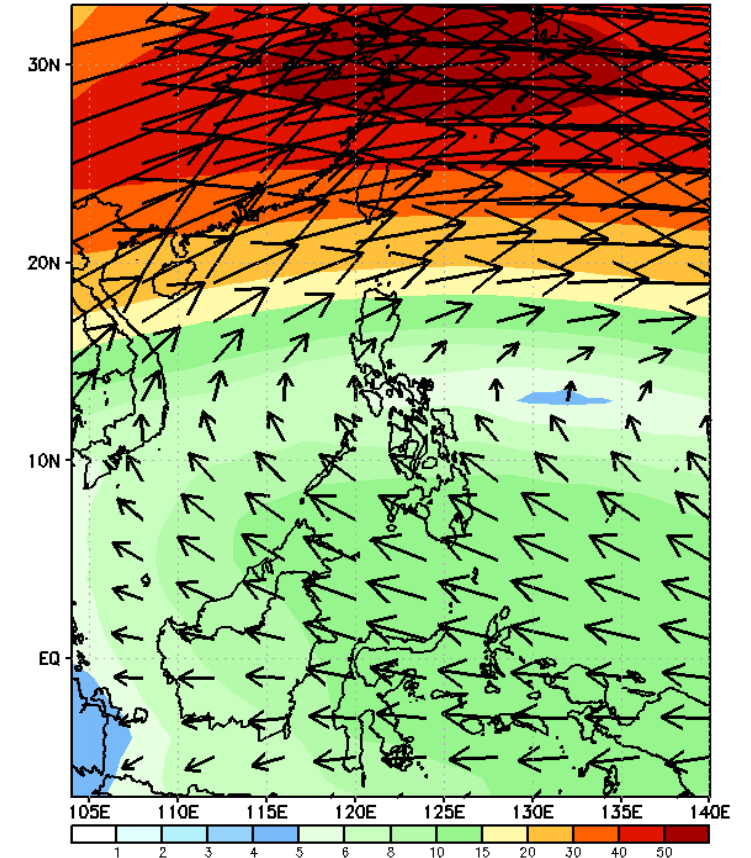
GEFS Week-2 850-hPa Wind Total  
Valid: 20240410 - 20240416



GEFS Week-2 700-hPa Wind Total  
Valid: 20240410 - 20240416

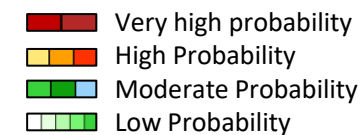


GEFS Week-2 200-hPa Wind Total  
Valid: 20240410 - 20240416



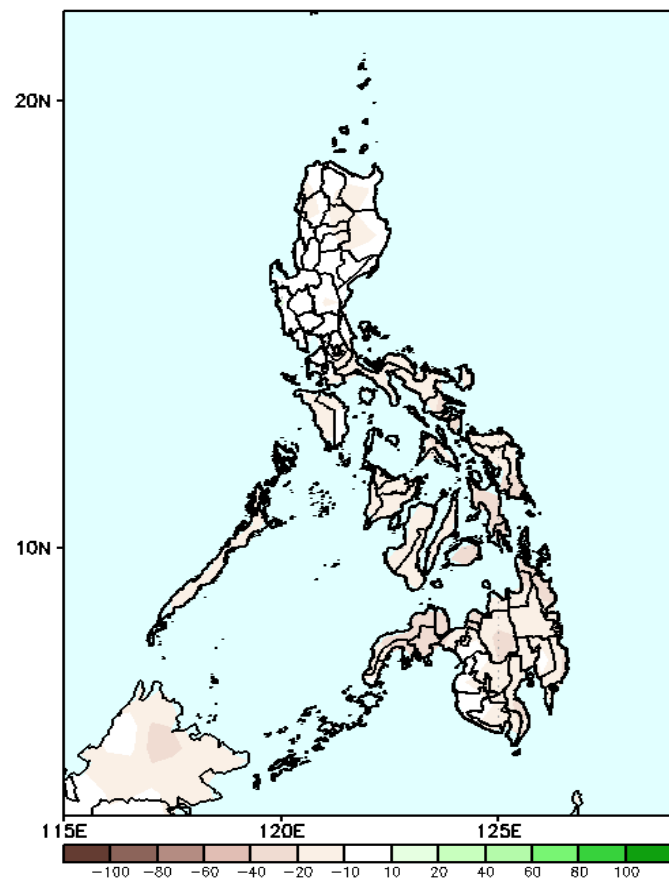
Easterlies will likely prevail in most parts of the country. Expect dry and warm days during the forecast period.

# Precipitation Anomaly and Exceedance Probability > 25/50 mm



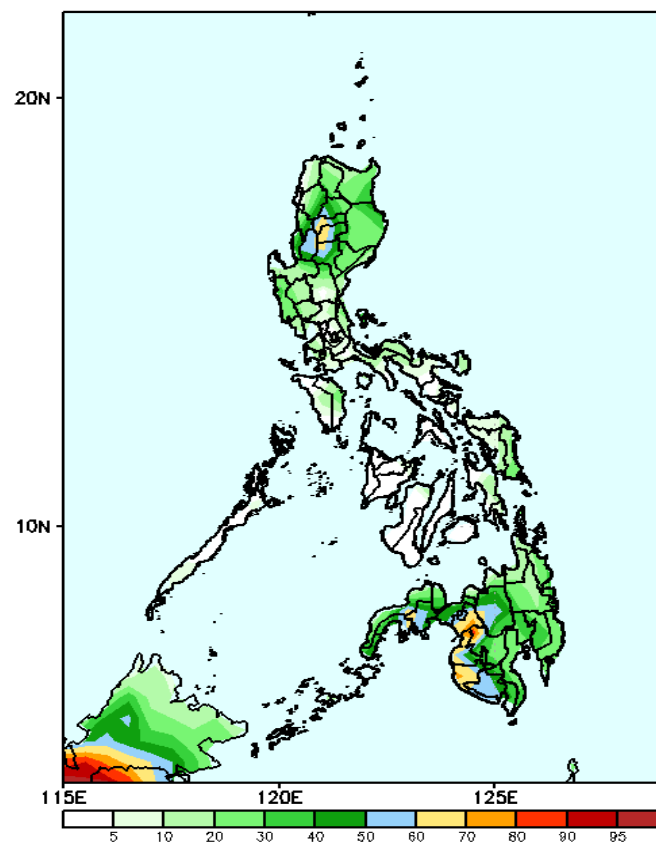
Week 2: Apr 10-16, 2024

GEFS Week-2 Precip Anomaly  
Valid: 20240410 - 20240416



Rainfall deficit of 10-30mm in most parts of the country is expected.

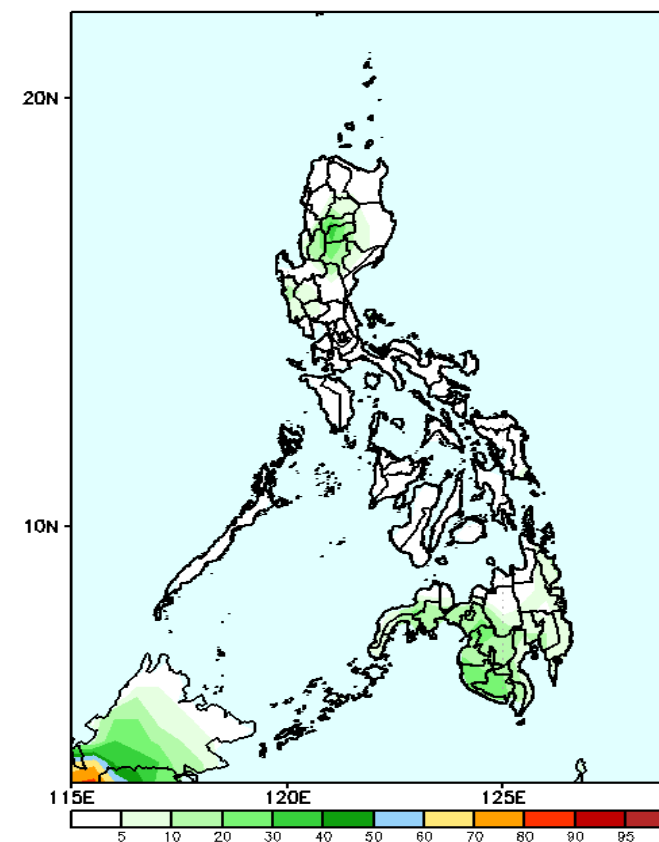
GEFS Week-2 Exceedance Prob. > 25mm  
Valid: 20240410 - 20240416



## Probability to Exceed 25mm

- Moderate to high over portions of CAR, Nueva Vizcaya, Western Mindanao and some portions of Zamboanga Peninsula;
- Low to moderate over the rest of Mindanao;
- Low over the rest of the country.

GEFS Week-2 Exceedance Prob. > 50mm  
Valid: 20240410 - 20240416



## Probability to Exceed 50mm

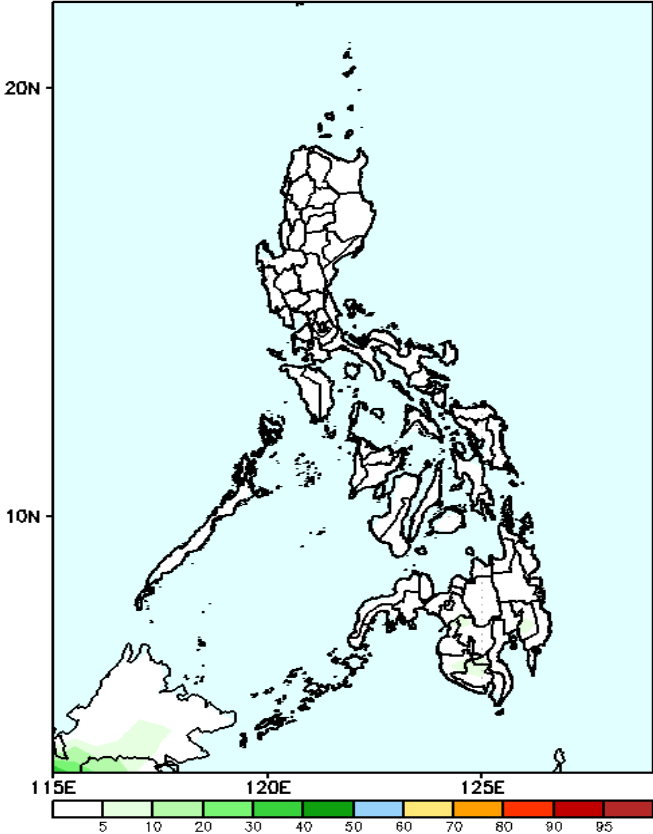
- Low across the country.

# Exceedance Probability > 100/150/200 mm

Week 2: Apr 10-16, 2024

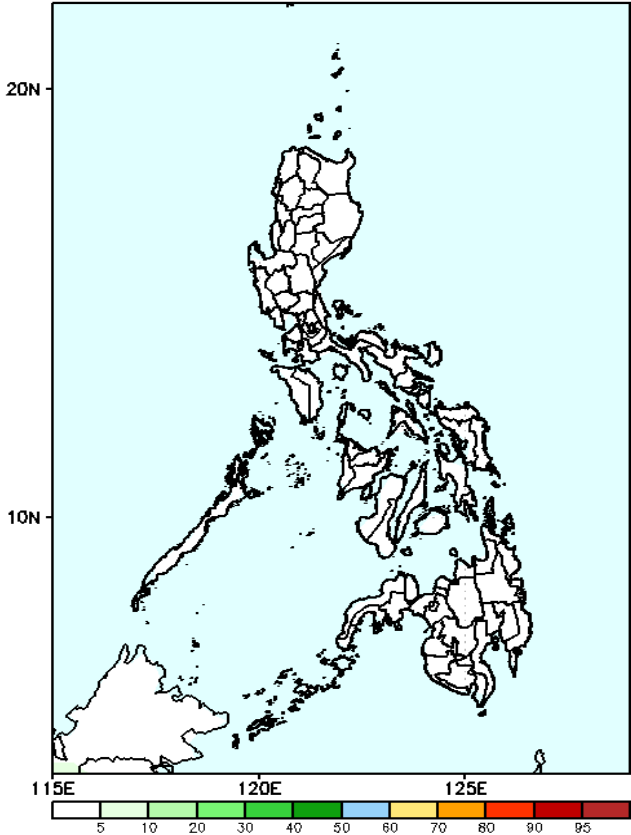
- Very high probability
- High Probability
- Moderate Probability
- Low Probability

GEFS Week-2 Exceedance Prob. > 100mm  
Valid: 20240410 – 20240416



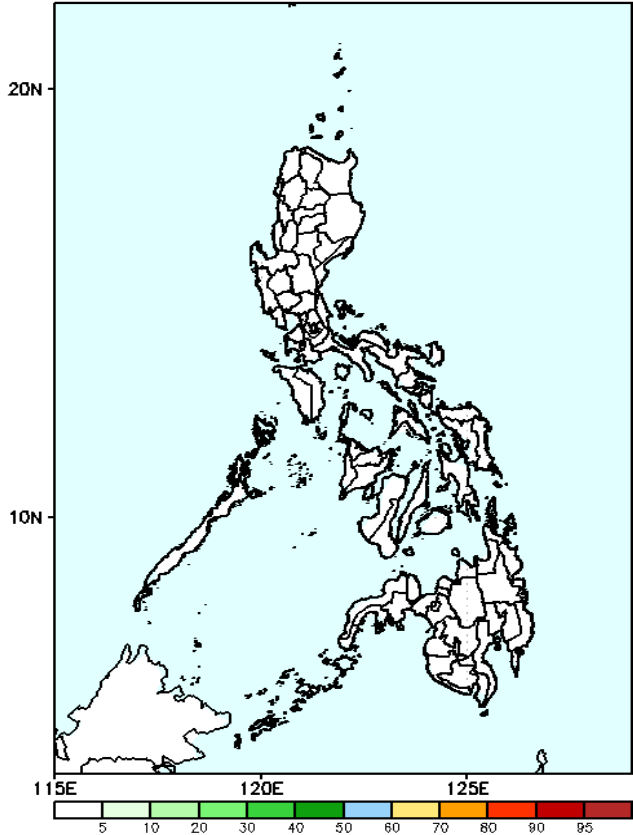
**Probability to Exceed 100mm**  
• Low across the country.

GEFS Week-2 Exceedance Prob. > 150mm  
Valid: 20240410 – 20240416



**Probability to Exceed 150mm**  
• Low across the country.

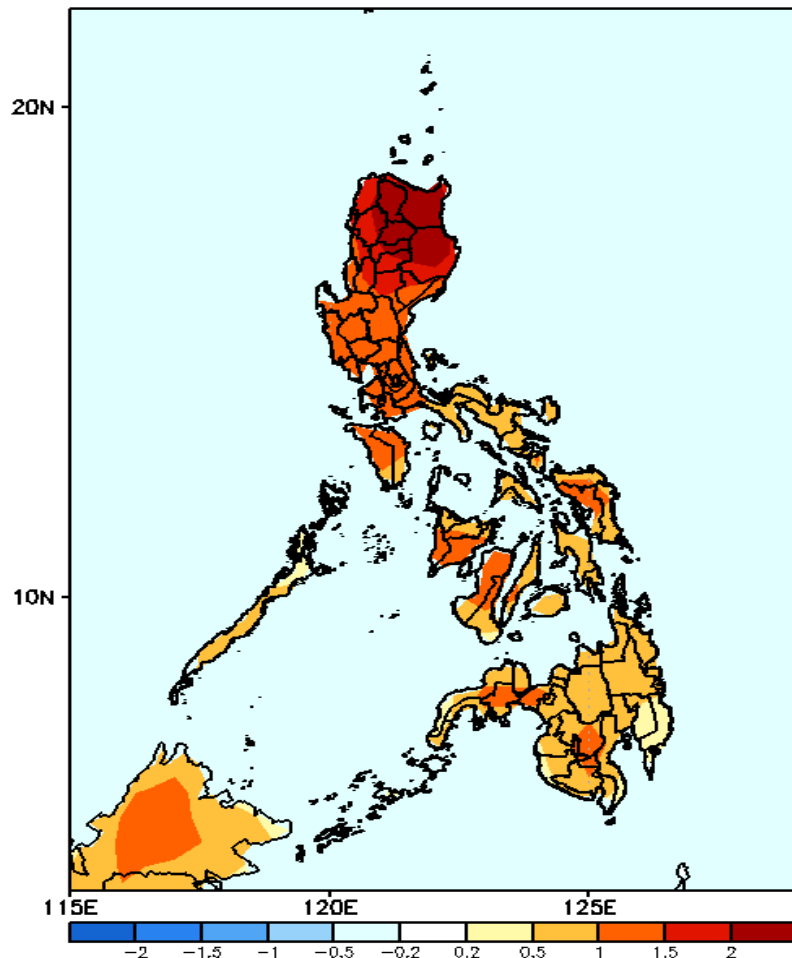
GEFS Week-2 Exceedance Prob. > 200mm  
Valid: 20240410 – 20240416



**Probability to Exceed 200mm**  
• Low across the country.

# GEFS Week-1 & 2 Forecasts: T2m Anomaly

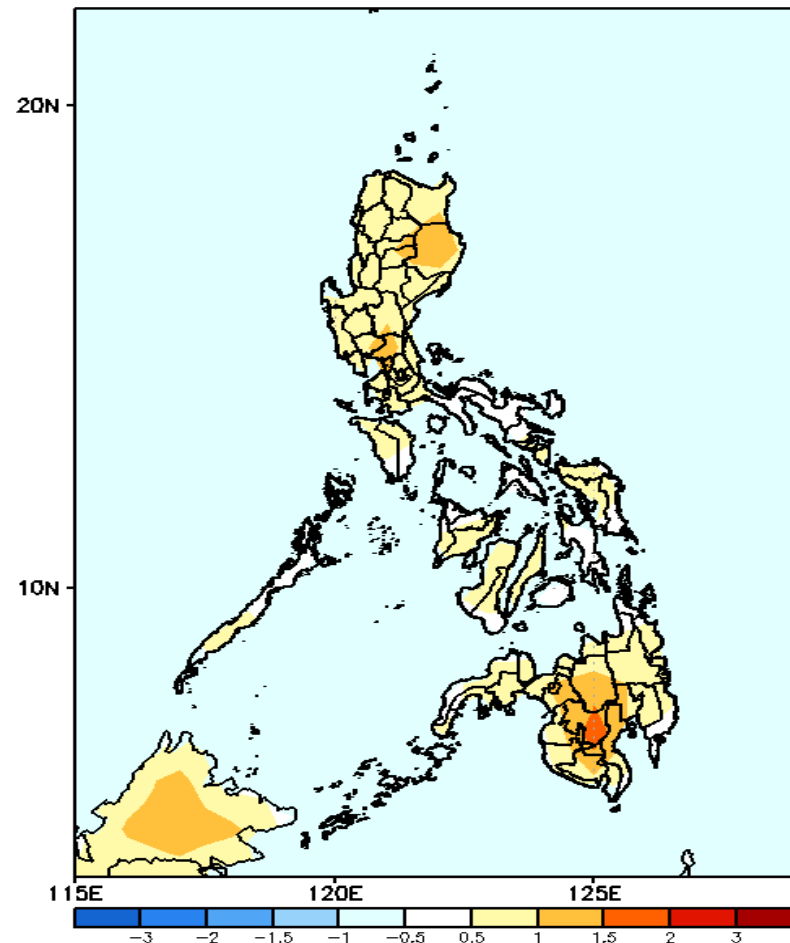
GEFS Week-1 T2m Anomaly  
Valid: 20240403 – 20240409



## 2m Temperature Week 1: April 03-09, 2024

Warmer than average surface air temperature will likely be experienced in most parts of Luzon; slightly warmer to warmer in Visayas and Mindanao.

GEFS Week-2 T2m Anomaly  
Valid: 20240410 – 20240416



## 2m Temperature Week 2: Apr 10-16, 2024

Slightly warmer to warmer than average surface air temperature will likely be experienced in most parts of the country.