



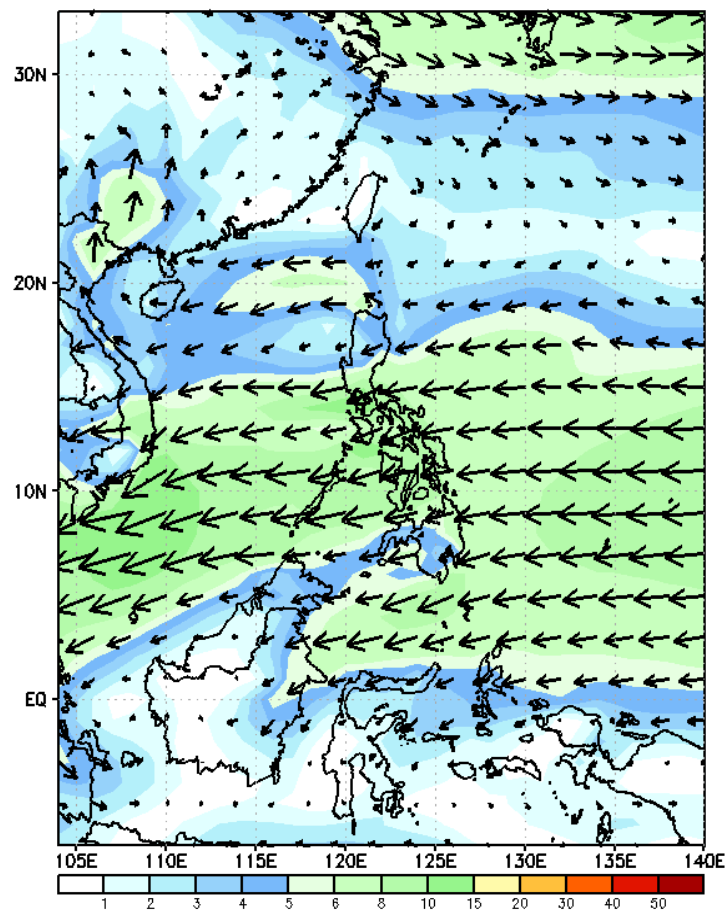
Week 1 & Week 2 Forecast for the Philippines using GEFS Model



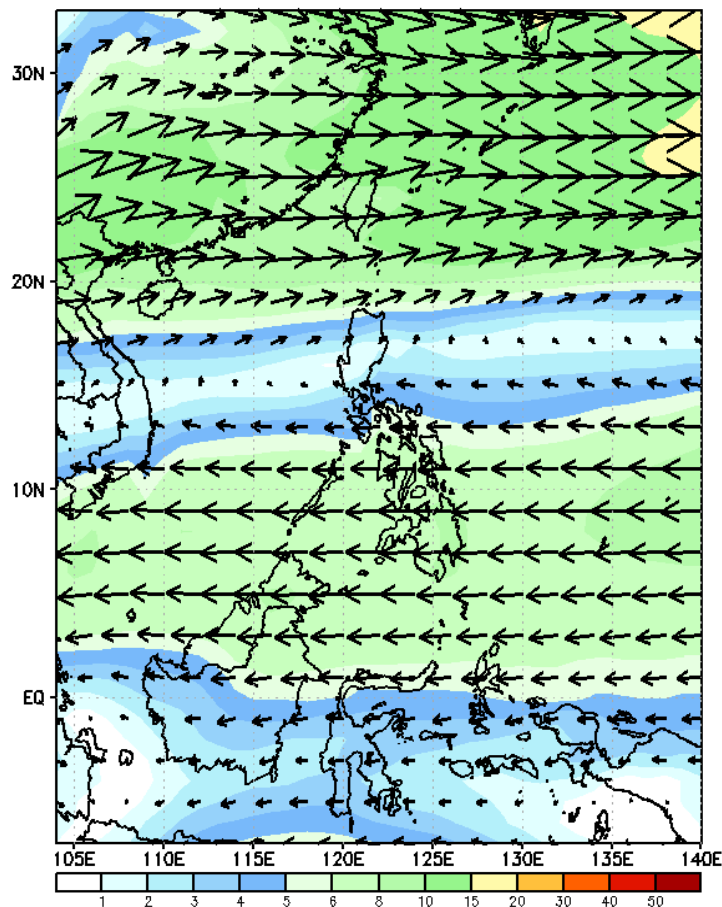
GEFS Week-1 Forecasts: Wind Forecast

Week 1: January 03 - 09, 2024

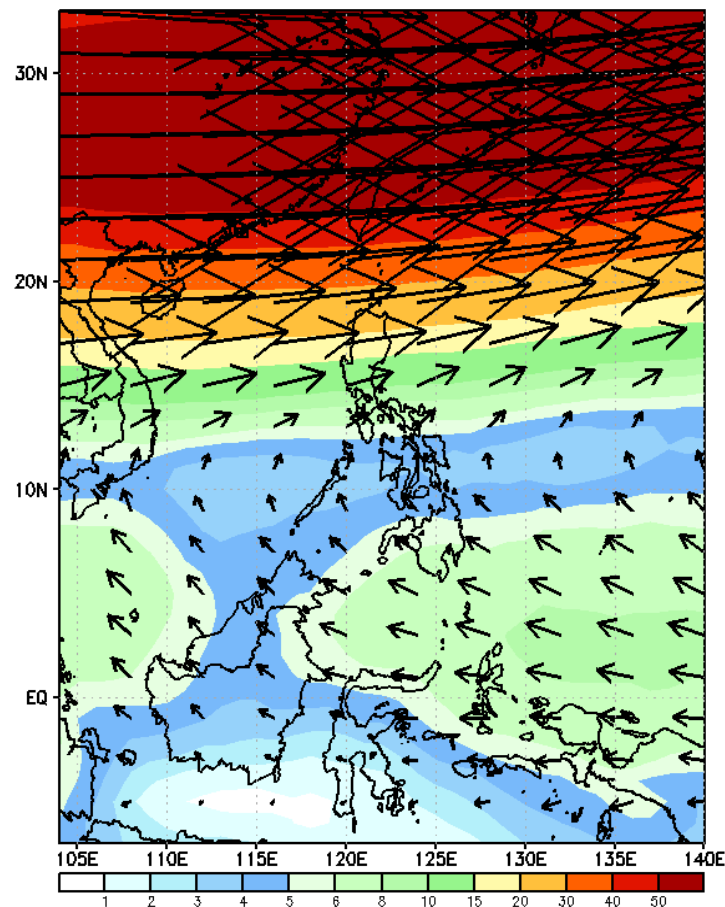
GEFS Week-1 850-hPa Wind Total
Valid: 20240103 - 20240109



GEFS Week-1 700-hPa Wind Total
Valid: 20240103 - 20240109

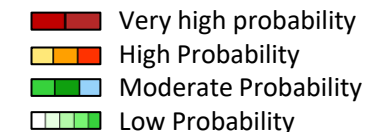


GEFS Week-1 200-hPa Wind Total
Valid: 20240103 - 20240109



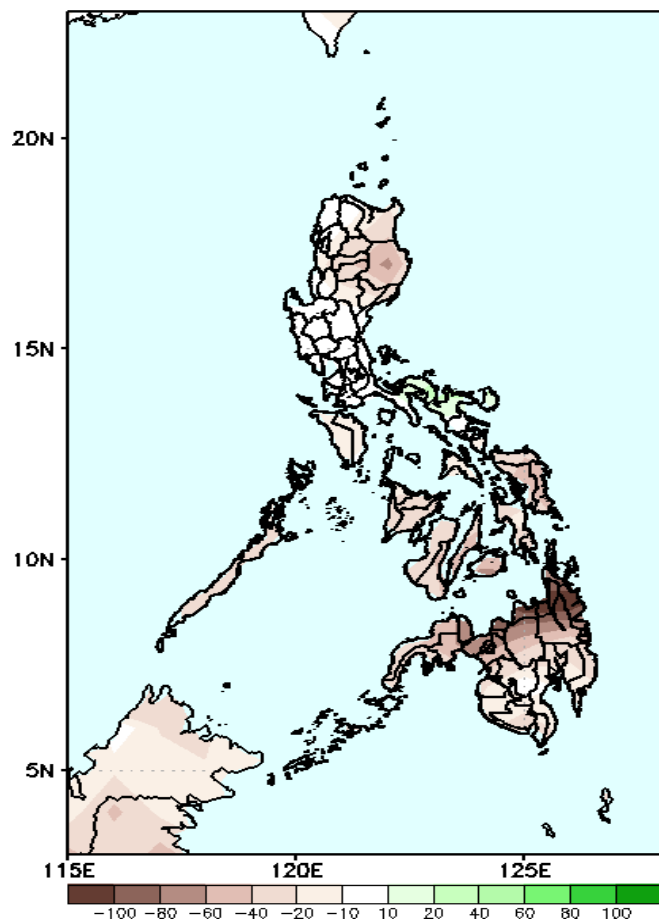
Northeast Monsoon affecting Extreme Northern Luzon; Easterlies affecting the rest of the country

Precipitation Anomaly and Exceedance Probability > 25/50 mm



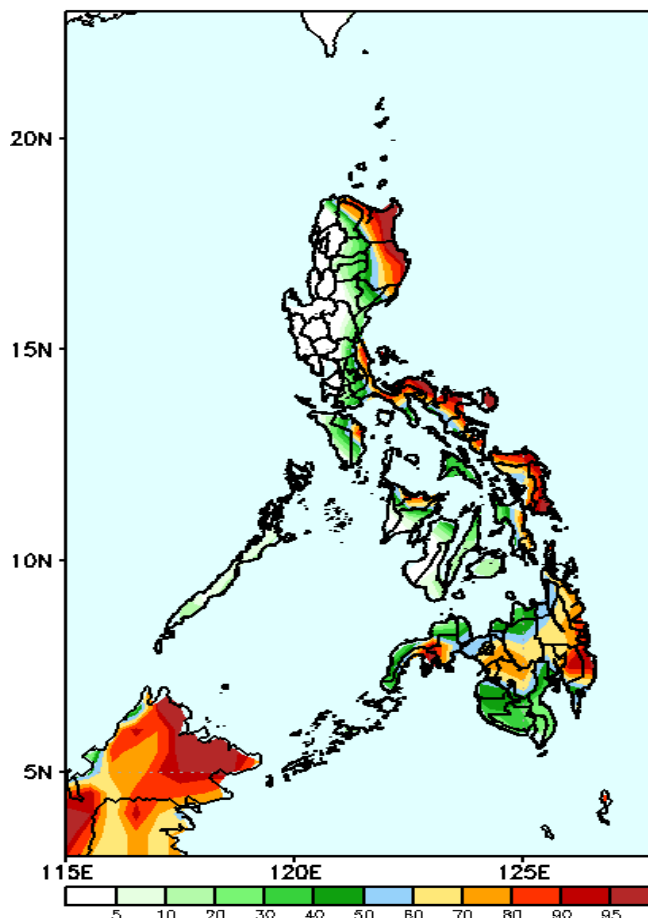
Week 1: January 03 - 09, 2024

GEFS Week-1 Precip Anomaly
Valid: 20240103 - 20240109



Rainfall deficit of 40-60mm in most parts of the country. Moreover, a deficit of 80-100mm is forecasted in Northern Mindanao.

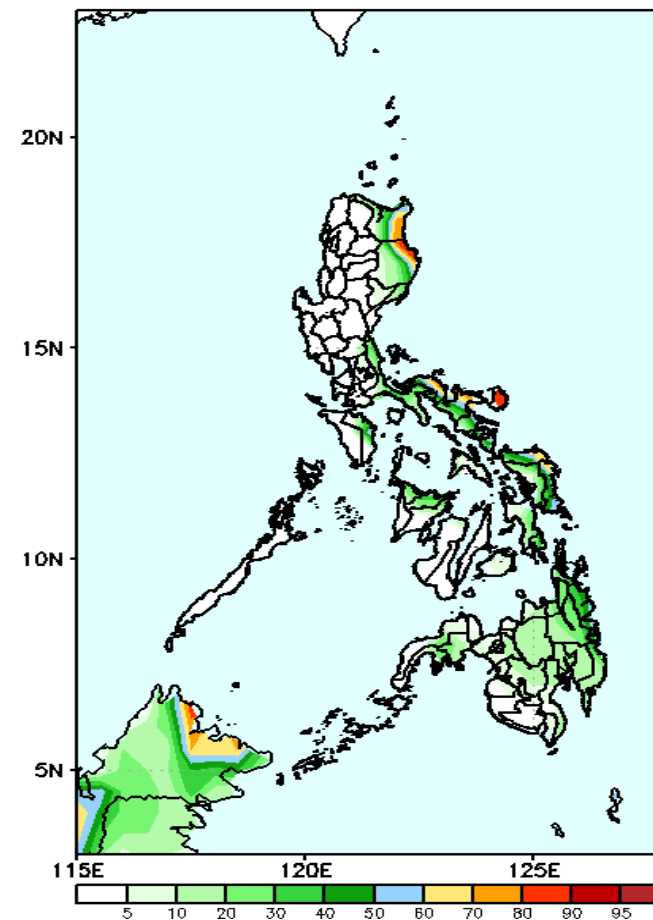
GEFS Week-1 Exceedance Prob. > 25mm
Valid: 20240103 - 20240109



Probability to Exceed 25mm

- High to very high over the eastern sections of Cagayan, Isabela and Bicol Region, Northern and Eastern Samar;
- Moderate to high over the rest of Isabela, Cagayan, Bicol Region, Samar, Leyte provinces, and most parts of Mindanao;
- Low to moderate over the rest of the country.

GEFS Week-1 Exceedance Prob. > 50mm
Valid: 20240103 - 20240109

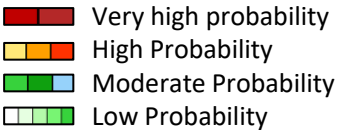


Probability to Exceed 50mm

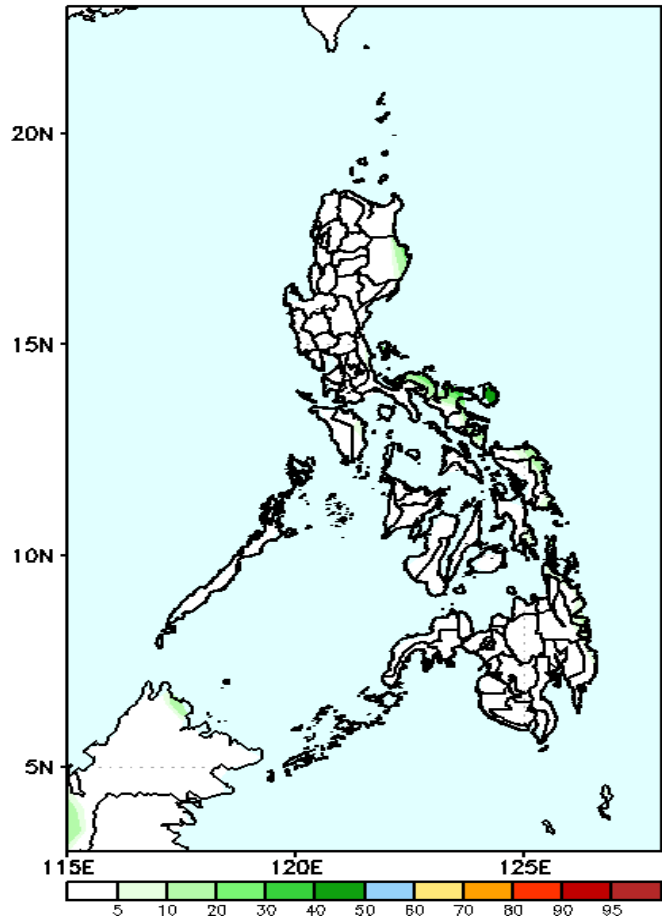
- Moderate to high over the eastern sections of Cagayan, Isabela, Bicol Region, and Northern and Eastern Samar;
- Low to moderate over the remaining parts of Bicol Region, Samar, and most of Eastern Mindanao;
- Low elsewhere.

Exceedance Probability > 100/150/200 mm

Week 1: January 03 - 09, 2024

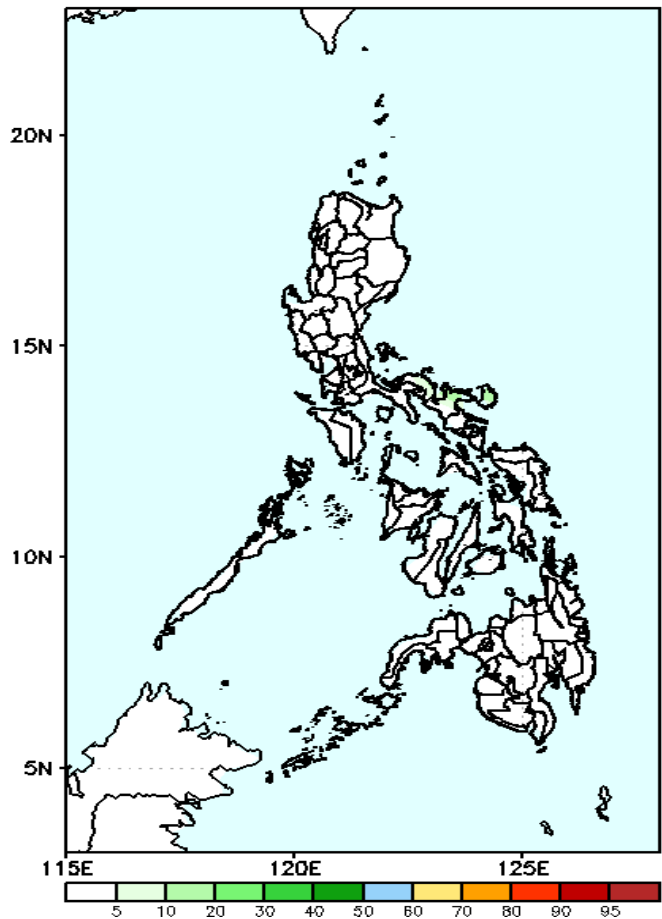


GEFS Week-1 Exceedance Prob. > 100mm
Valid: 20240103 - 20240109



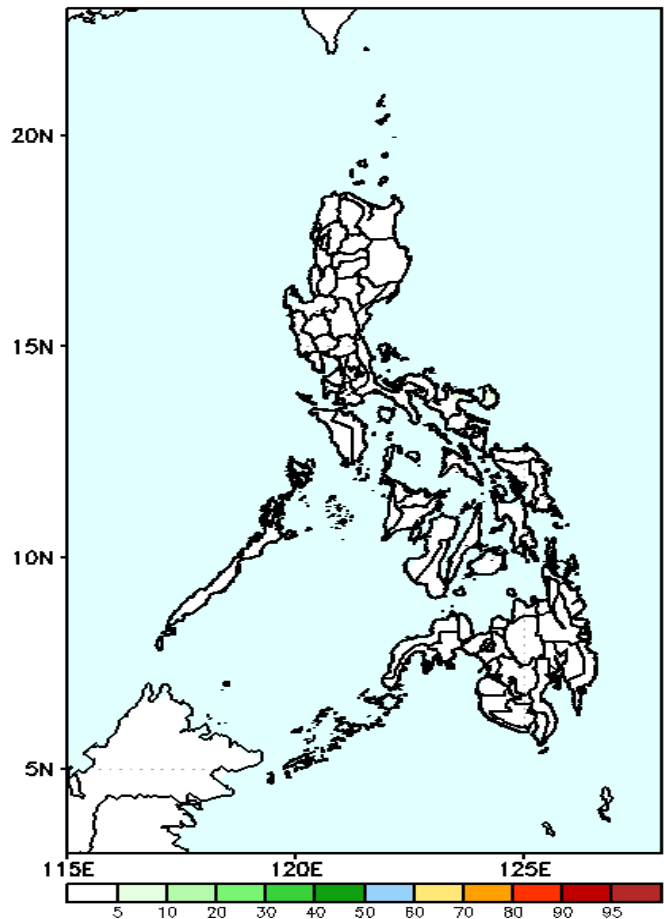
Probability to Exceed 100mm
• Low across the country.

GEFS Week-1 Exceedance Prob. > 150mm
Valid: 20240103 - 20240109



Probability to Exceed 150mm
• Low across the country.

GEFS Week-1 Exceedance Prob. > 200mm
Valid: 20240103 - 20240109

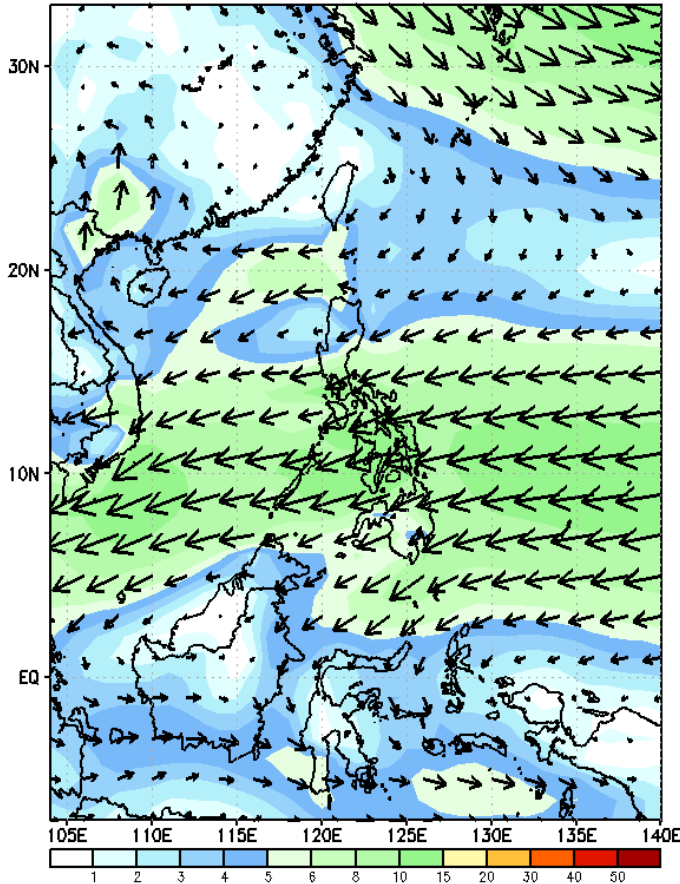


Probability to Exceed 200mm
• Low across the country.

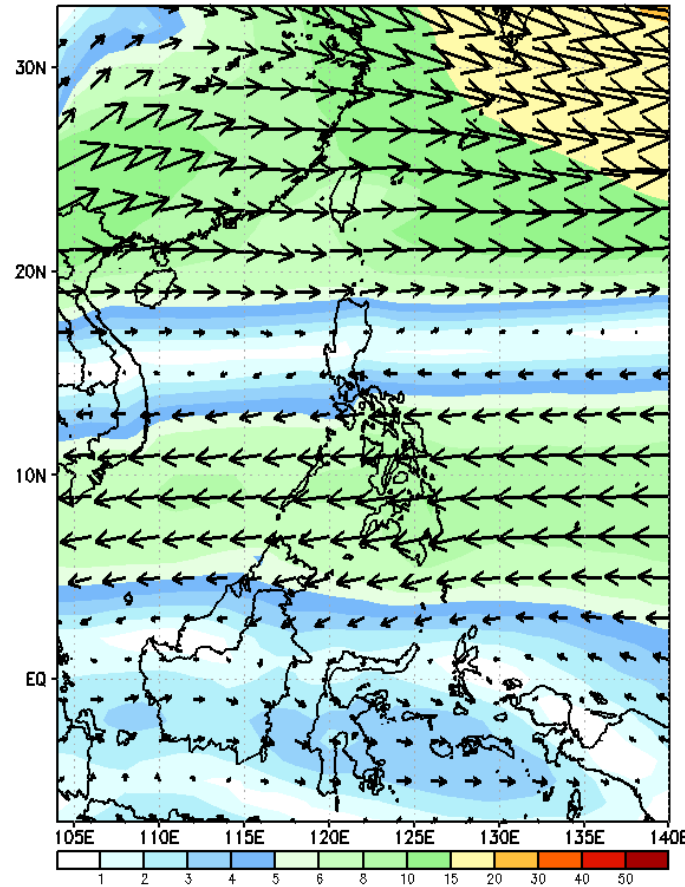
GEFS Week-2 Forecasts: Wind Forecast

Week 2: January 10-16, 2024

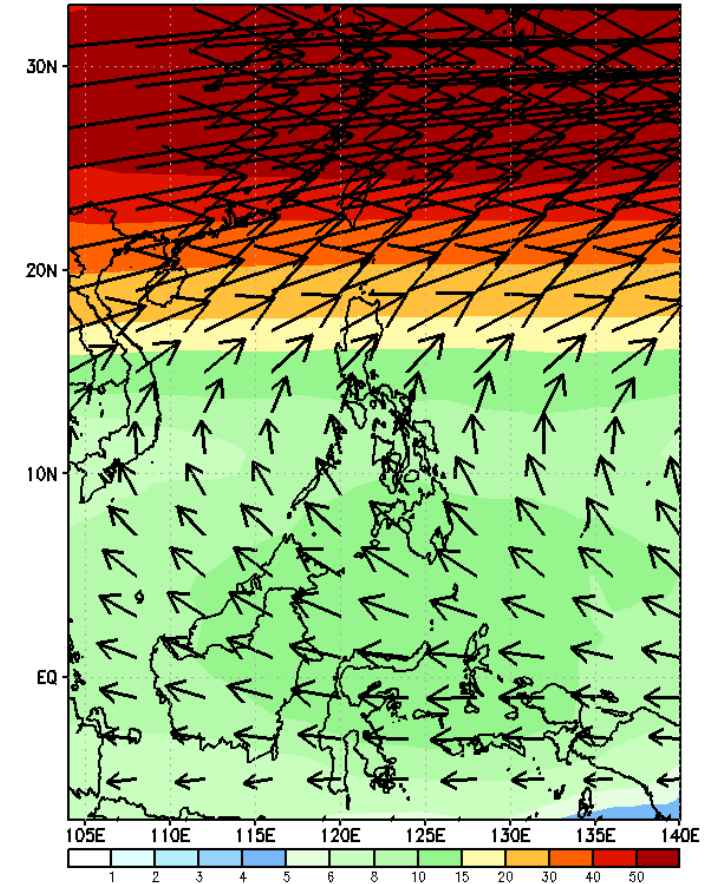
GEFS Week-2 850-hPa Wind Total
Valid: 20240110 - 20240116



GEFS Week-2 700-hPa Wind Total
Valid: 20240110 - 20240116

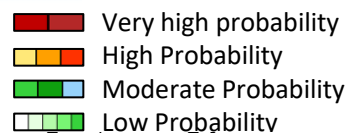


GEFS Week-2 200-hPa Wind Total
Valid: 20240110 - 20240116



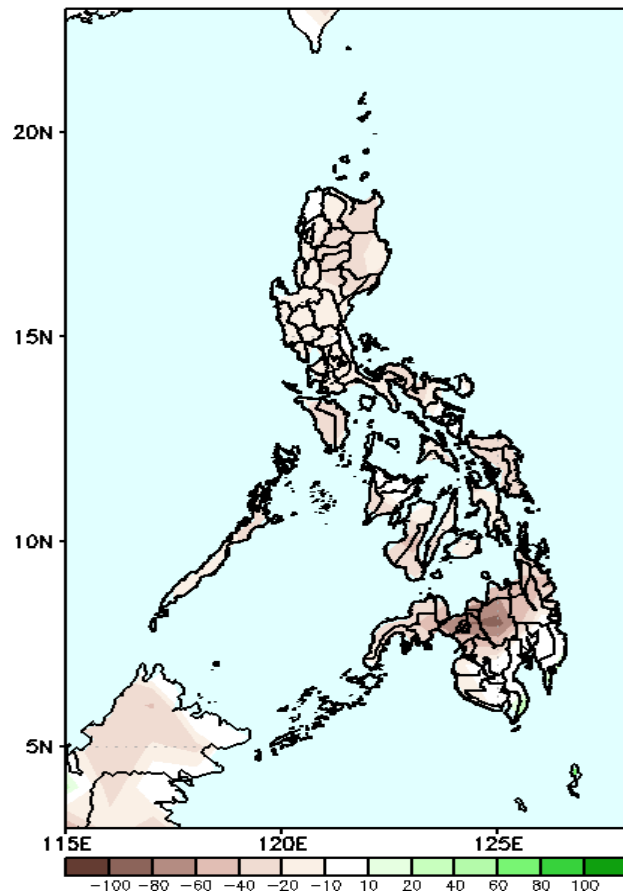
Northeast Monsoon affecting Northern Luzon; Easterlies affecting the rest of the country.

Precipitation Anomaly and Exceedance Probability > 25/50 mm



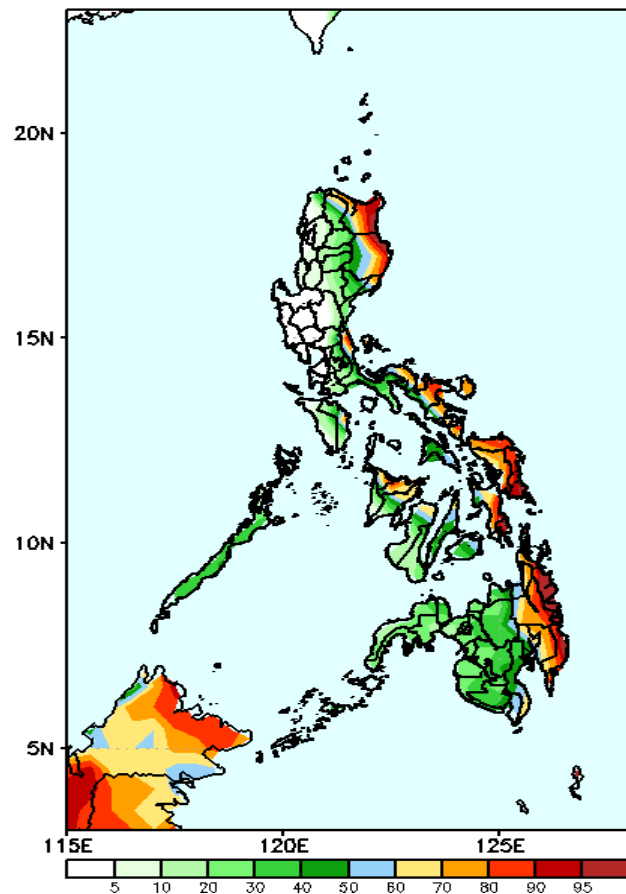
Week 2: January 10-16, 2024

GEFS Week-2 Precip Anomaly
Valid: 20240110 - 20240116



Rainfall deficit of 60-80mm in most parts of the country.

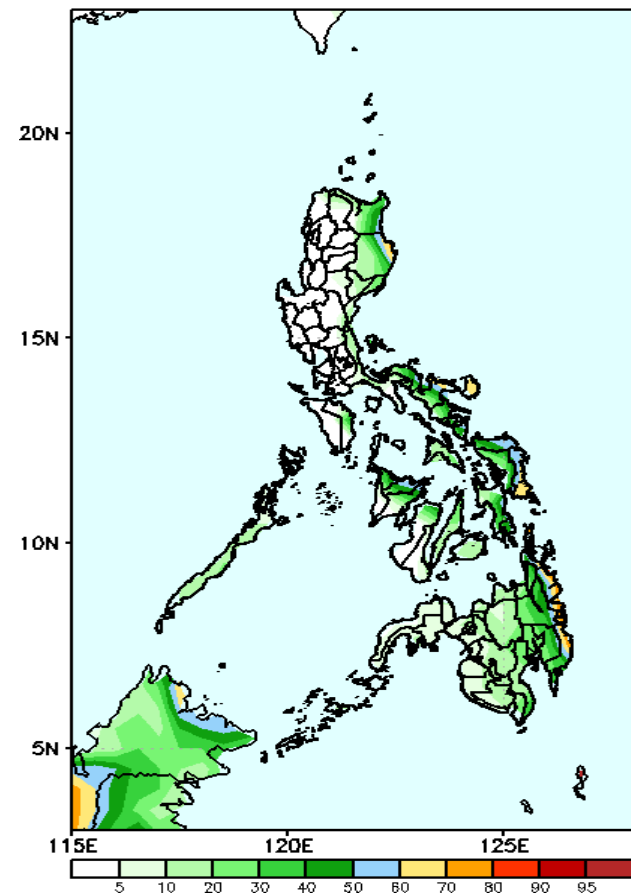
GEFS Week-2 Exceedance Prob. > 25mm
Valid: 20240110 - 20240116



Probability to Exceed 25mm

- High to very high over the eastern sections of Cagayan, Isabela and Bicol Region and most parts of Eastern Visayas and Mindanao;
- Moderate to high over the rest of Isabela, Cagayan, Bicol Region, Visayas and Mindanao;
- Low to moderate over the rest of the country.

GEFS Week-2 Exceedance Prob. > 50mm
Valid: 20240110 - 20240116



Probability to Exceed 50mm

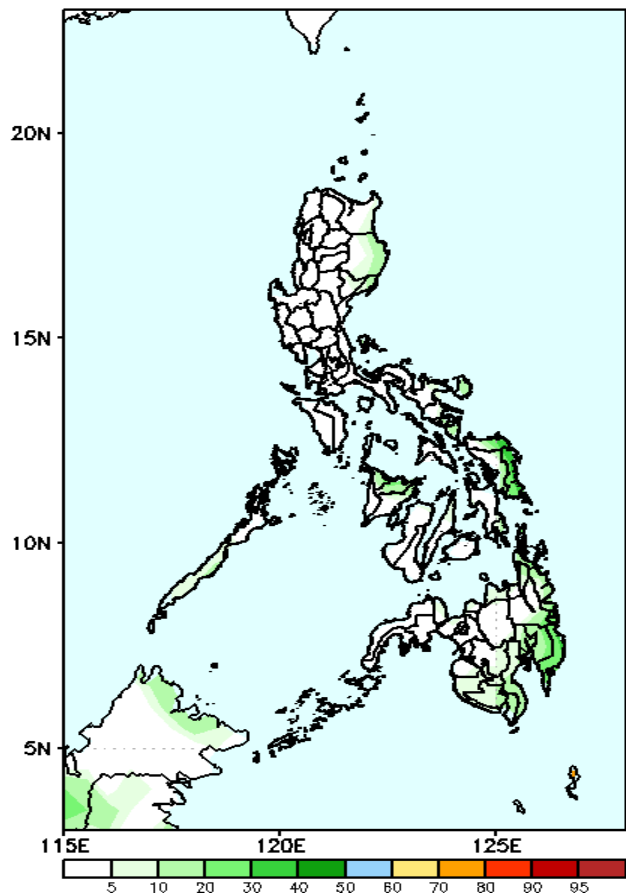
- Moderate to high over the eastern sections of Cagayan, Isabela and Bicol Region and most parts of Eastern Visayas, Surigao provinces and Davao Oriental;
- Low to moderate over the rest of Bicol Region and Eastern Mindanao, Aklan and Capiz;
- Low elsewhere.

Exceedance Probability > 100/150/200 mm

Week 2: January 10-16, 2024

- Very high probability
- High Probability
- Moderate Probability
- Low Probability

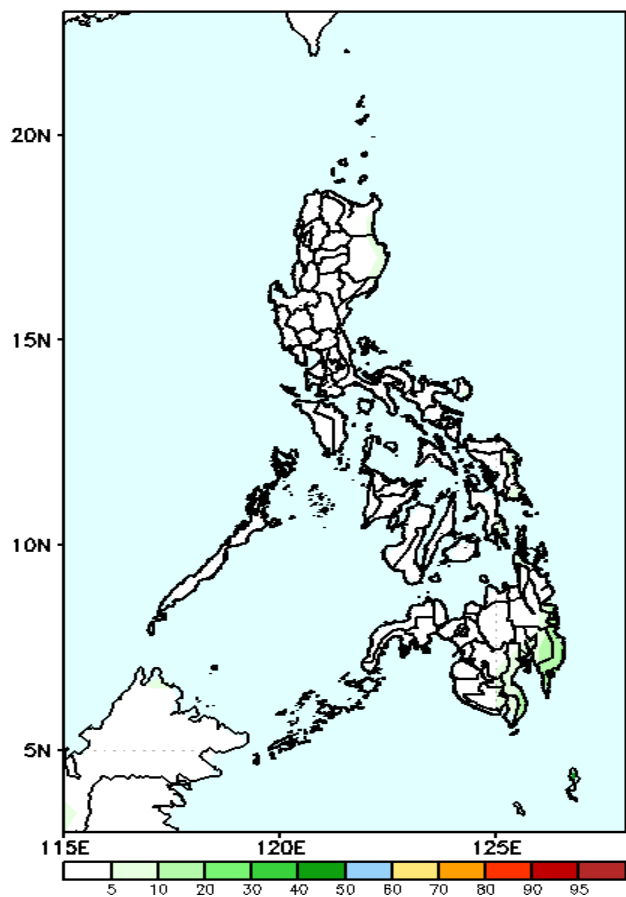
GEFS Week-2 Exceedance Prob. > 100mm
Valid: 20240110 - 20240116



Probability to Exceed 100mm

- Low across the country.

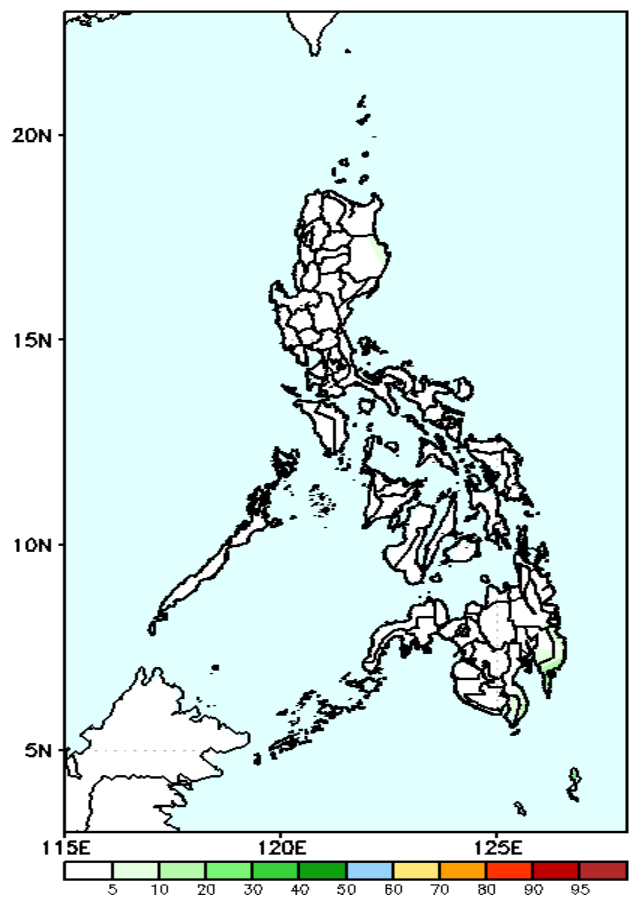
GEFS Week-2 Exceedance Prob. > 150mm
Valid: 20240110 - 20240116



Probability to Exceed 150mm

- Low across the country.

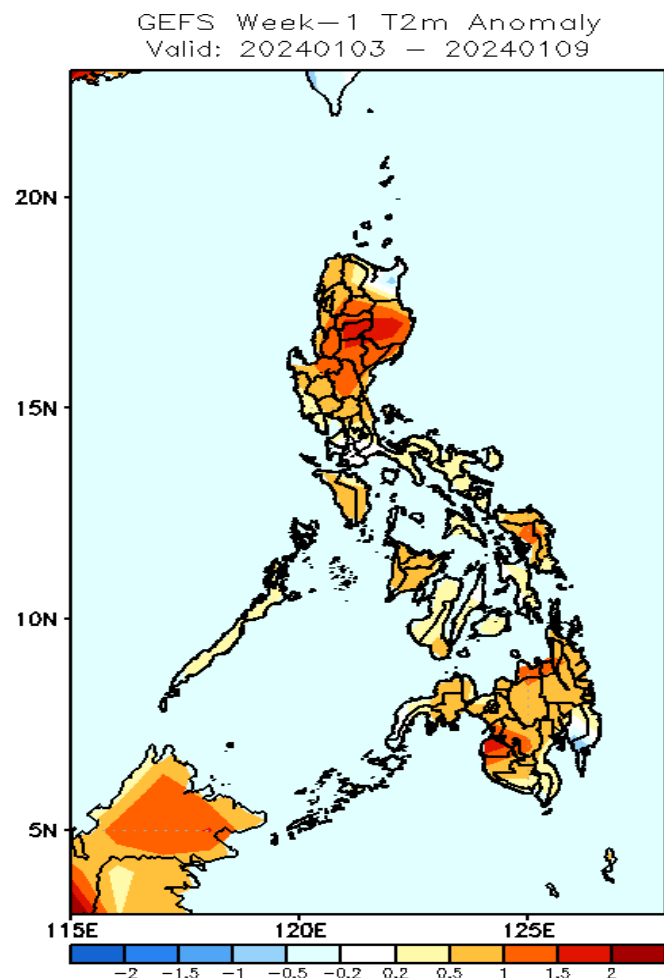
GEFS Week-2 Exceedance Prob. > 200mm
Valid: 20240110 - 20240116



Probability to Exceed 200mm

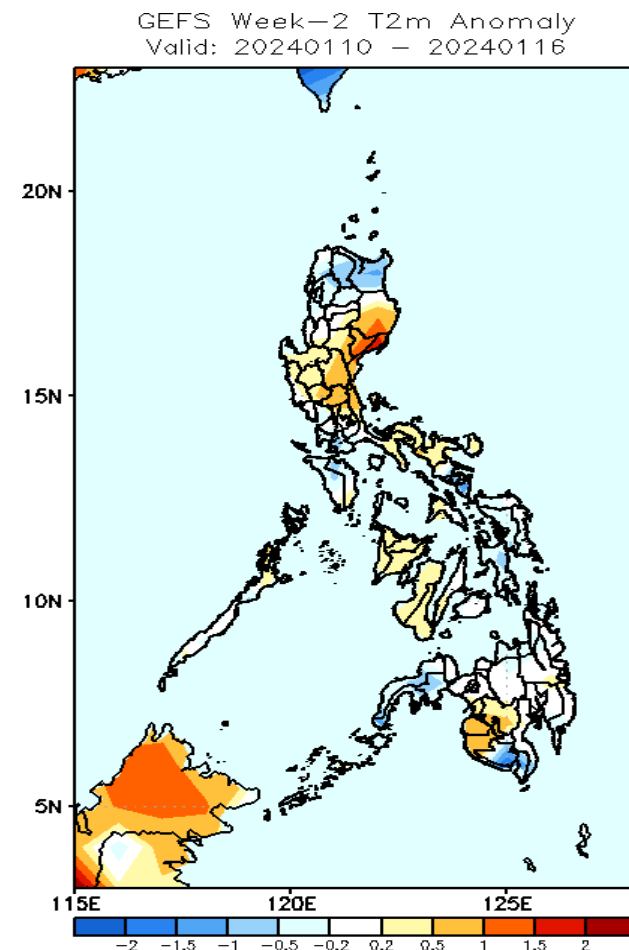
- Low across the country.

GEFS Week-1 & 2 Forecasts: T2m Anomaly



2m Temperature Week 1: January 03-09, 2024

Slightly warmer to warmer than average surface air temperature will likely be experienced in most parts of the country.



2m Temperature Week 2: Jan 10-16, 2024

Near average to warmer than average surface air temperature will likely be experienced in most parts of the country except in Apayao, Abra, Cagayan, Leyte provinces, South Cotabato, Sarangani, and Zamboanga Peninsula where slightly cooler to cooler than average surface air temperature is expected.