



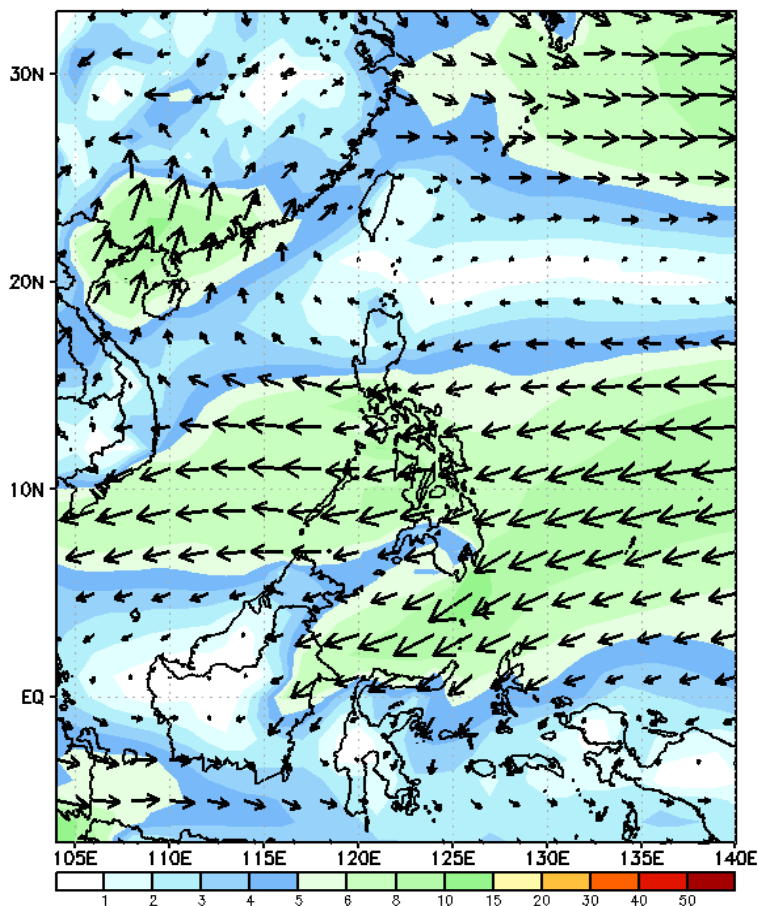
# Week 1 & Week 2 Forecast for the Philippines using GEFS Model



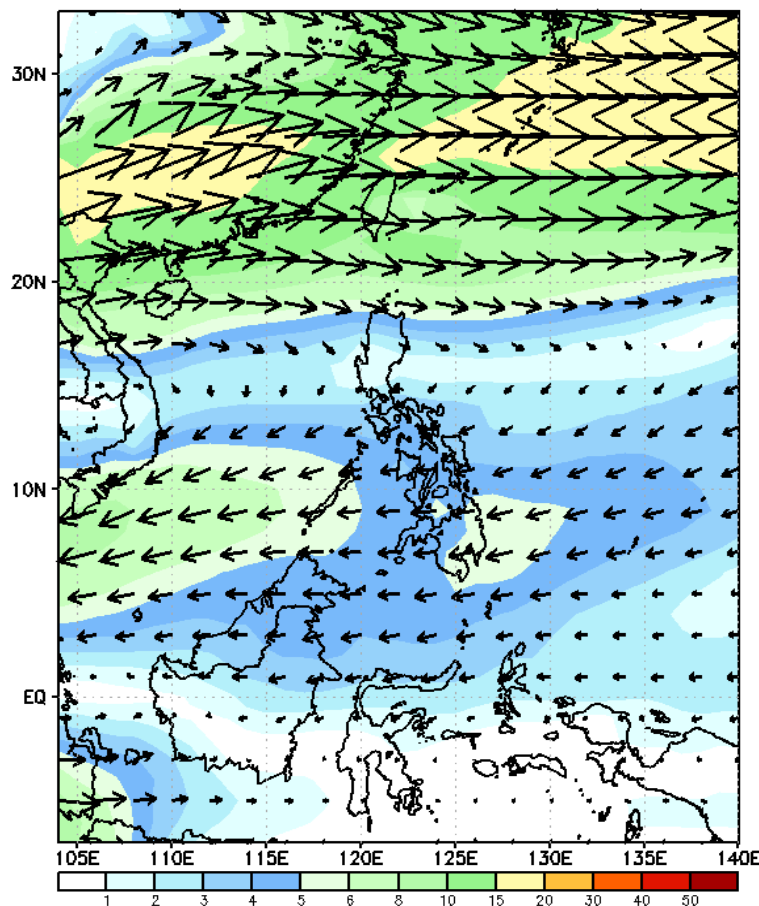
# GEFS Week-1 Forecasts: Wind Forecast

Week 1: March 04-10, 2024

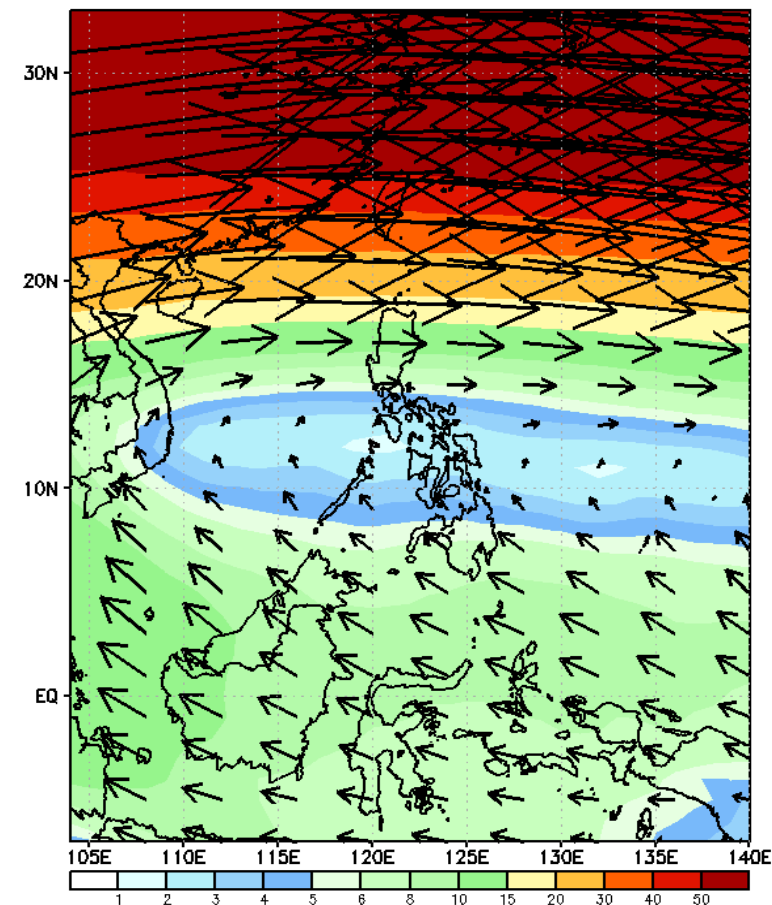
GEFS Week-1 850-hPa Wind Total  
Valid: 20240304 - 20240310



GEFS Week-1 700-hPa Wind Total  
Valid: 20240304 - 20240310

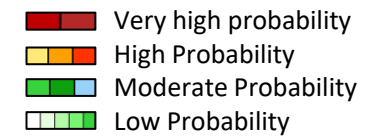


GEFS Week-1 200-hPa Wind Total  
Valid: 20240304 - 20240310



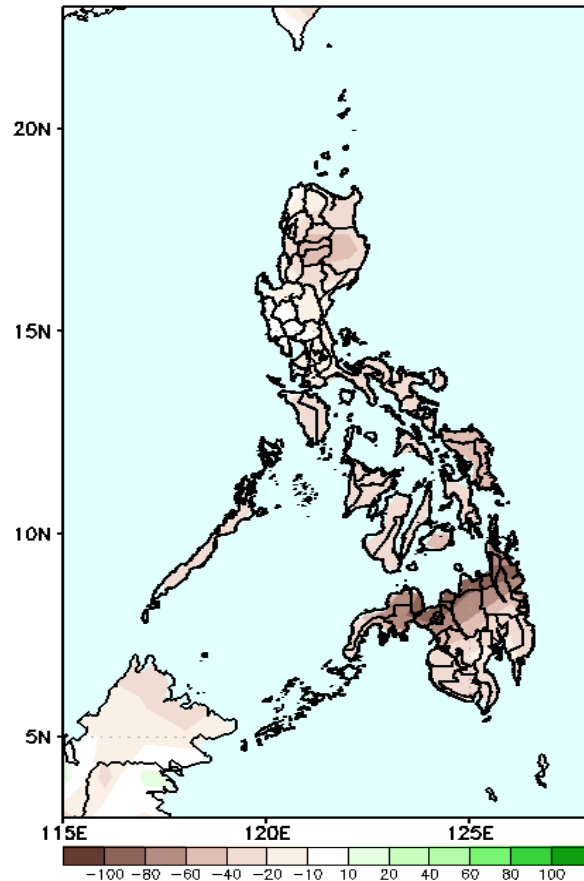
Northeast Monsoon will likely affect Northern Luzon; Easterlies for the rest of the country.

# Precipitation Anomaly and Exceedance Probability > 25/50 mm



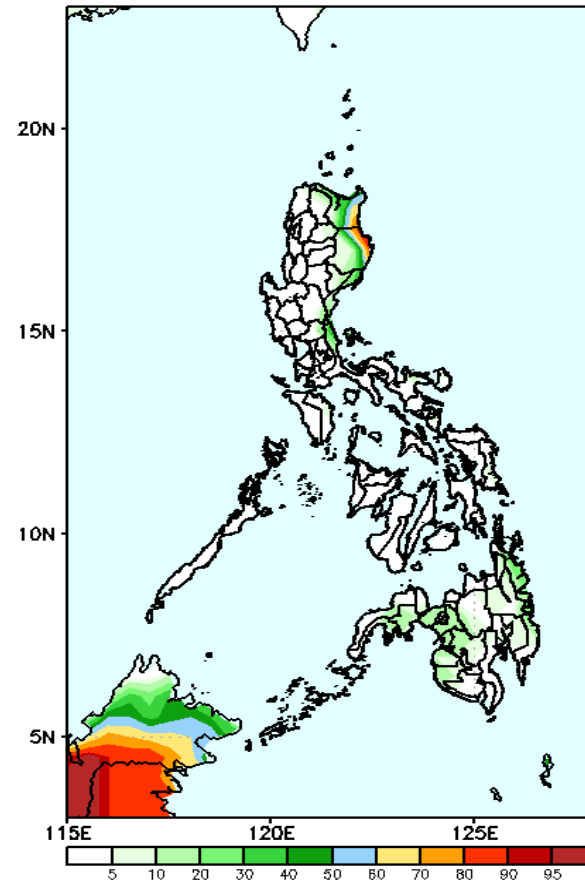
Week 1: March 04-10, 2024

GEFS Week-1 Precip Anomaly  
Valid: 20240304 - 20240310



Rainfall deficit of up to 100mm in northern Mindanao and 20-80mm for the rest of the country.

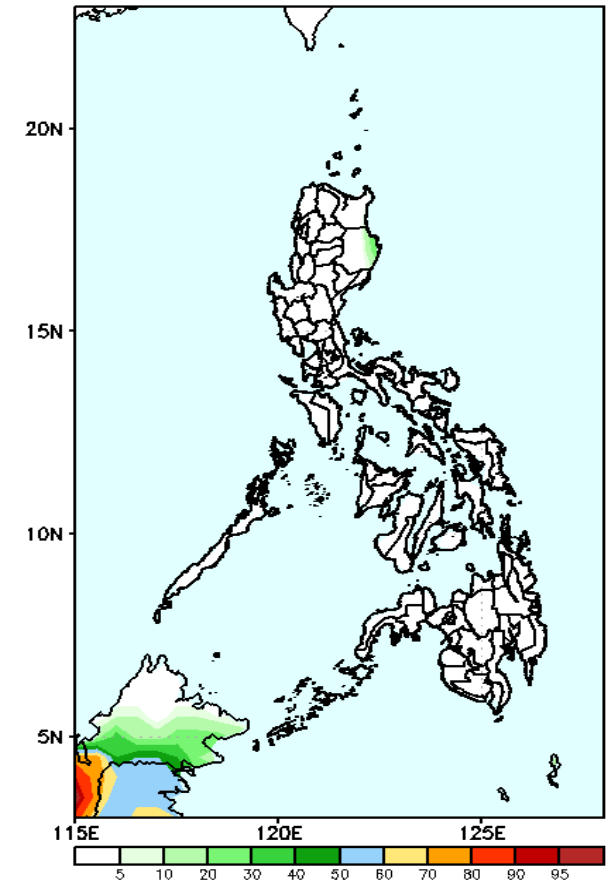
GEFS Week-1 Exceedance Prob. > 25mm  
Valid: 20240304 - 20240310



## Probability to Exceed 25mm

- Moderate to high over the eastern portions of Cagayan and Isabela;
- Low over the rest of the country.

GEFS Week-1 Exceedance Prob. > 50mm  
Valid: 20240304 - 20240310

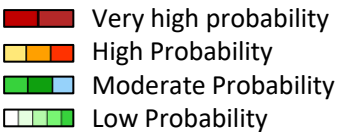


## Probability to Exceed 50mm

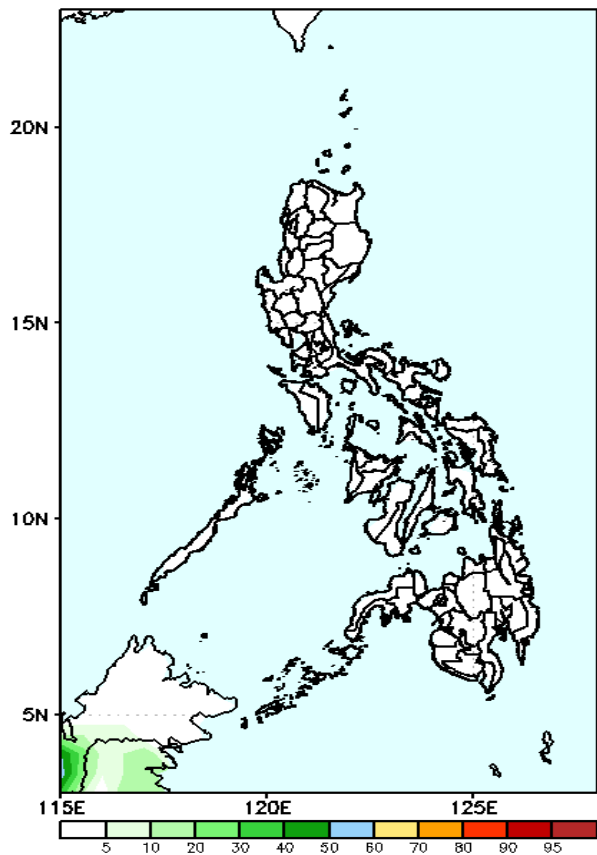
- Low across the country.

# Exceedance Probability > 100/150/200 mm

Week 1: March 04-10, 2024

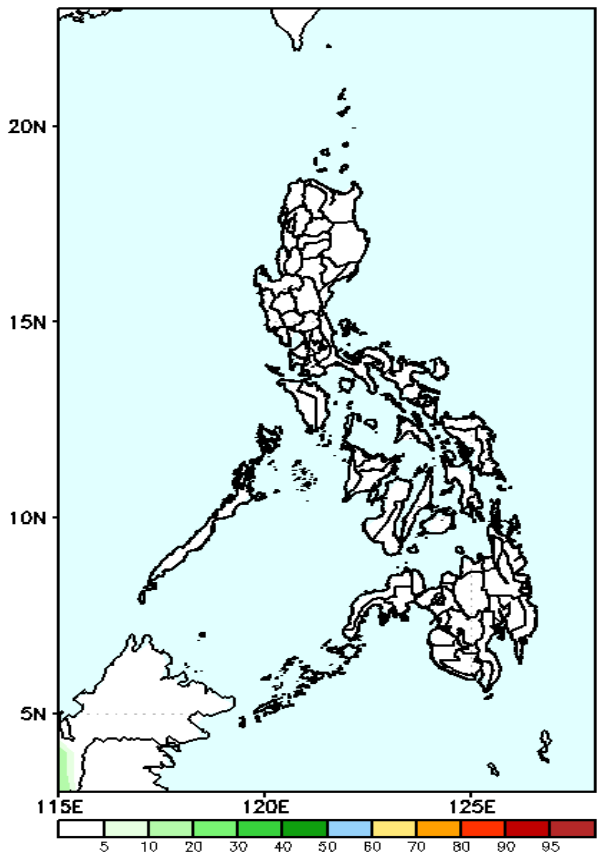


GEFS Week-1 Exceedance Prob. > 100mm  
Valid: 20240304 – 20240310



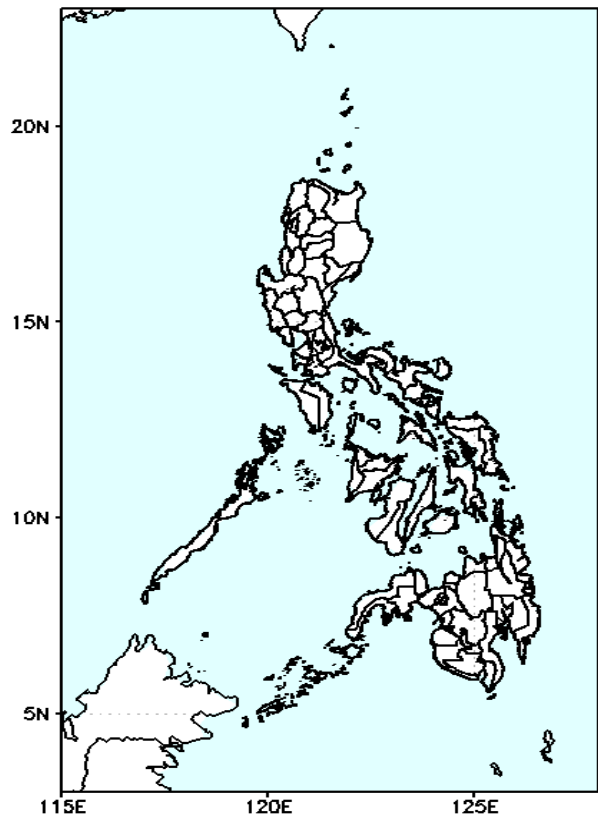
**Probability to Exceed 100mm**  
• Low across the country.

GEFS Week-1 Exceedance Prob. > 150mm  
Valid: 20240304 – 20240310



**Probability to Exceed 150mm**  
• Low across the country.

GEFS Week-1 Exceedance Prob. > 200mm  
Valid: 20240304 – 20240310



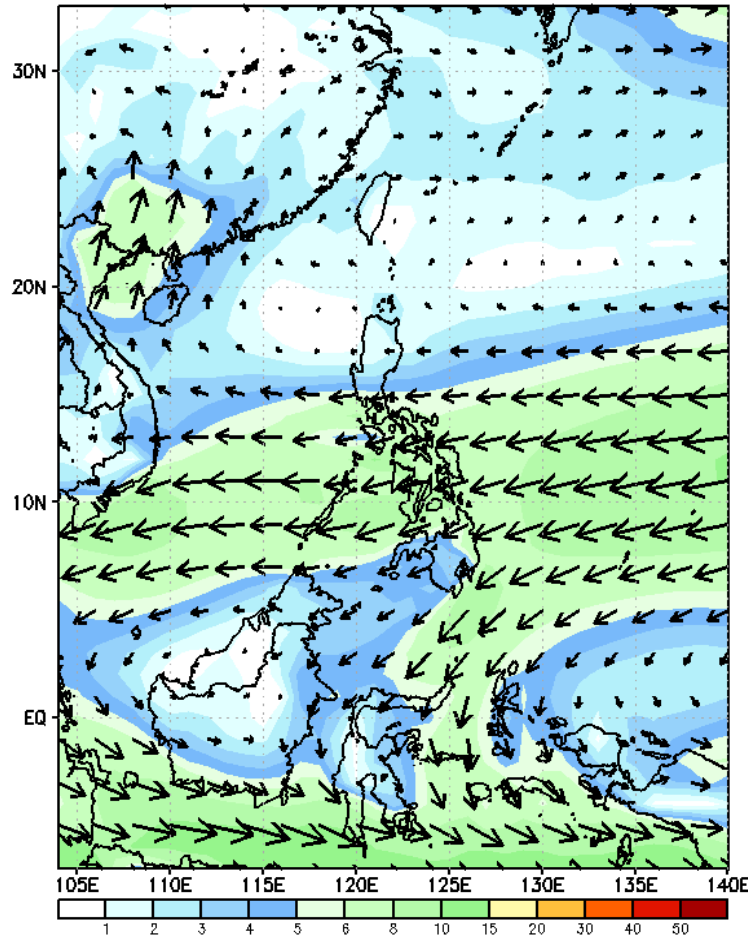
**Probability to Exceed 200mm**  
• Low across the country.



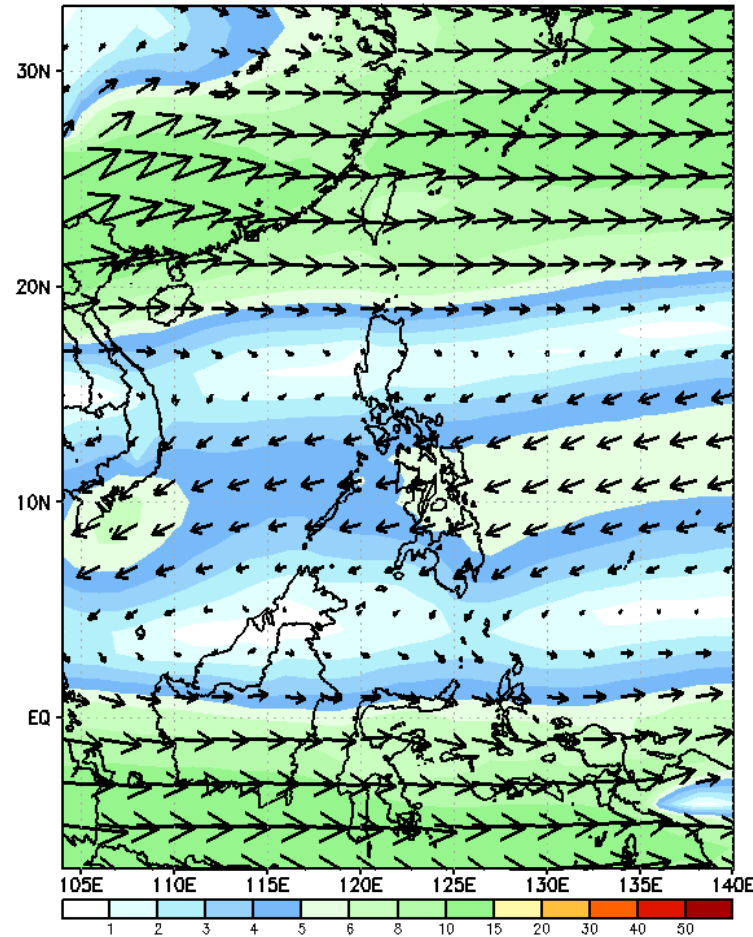
# GEFS Week-2 Forecasts: Wind Forecast

Week 2: Mar 11-17, 2024

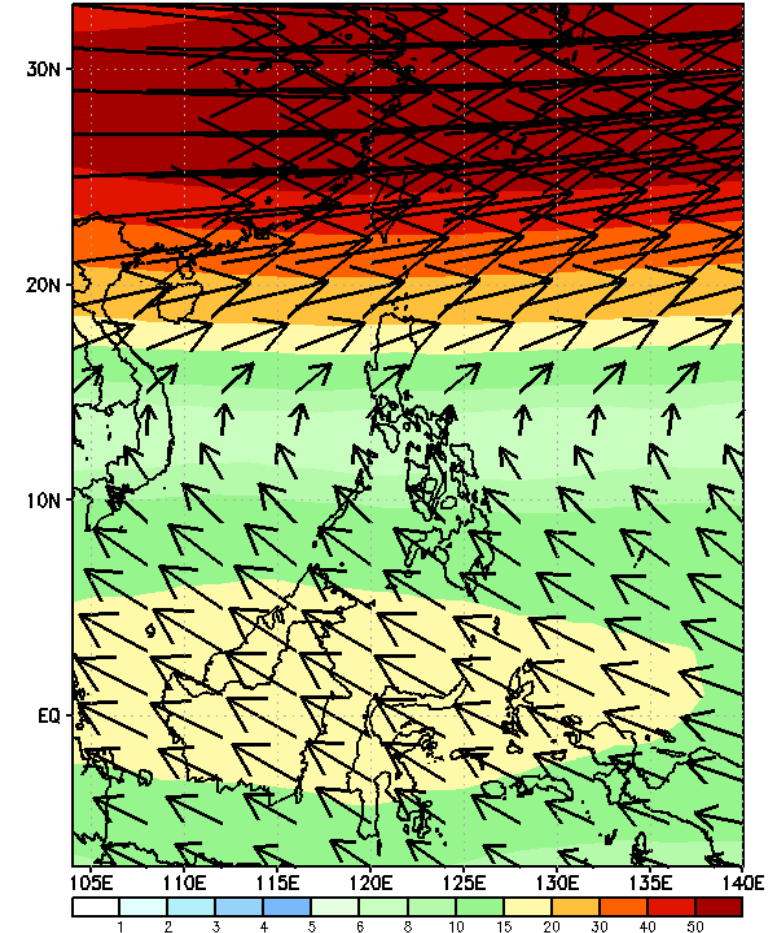
GEFS Week-2 850-hPa Wind Total  
Valid: 20240311 - 20240317



GEFS Week-2 700-hPa Wind Total  
Valid: 20240311 - 20240317

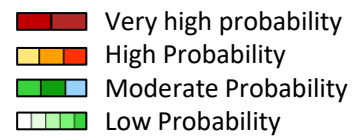


GEFS Week-2 200-hPa Wind Total  
Valid: 20240311 - 20240317



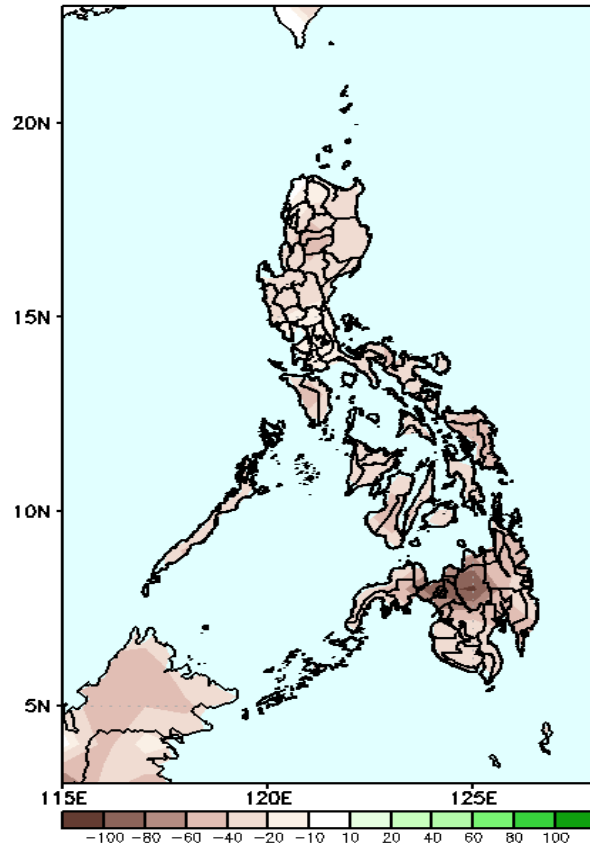
Easterlies will likely affect most parts of the country.

# Precipitation Anomaly and Exceedance Probability > 25/50 mm



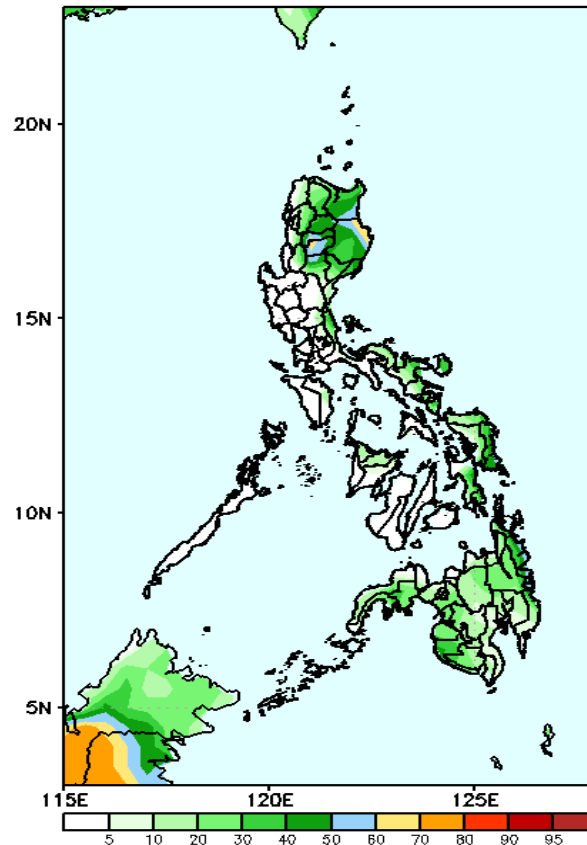
Week 2: Mar 11-17, 2024

GEFS Week-2 Precip Anomaly  
Valid: 20240311 - 20240317



Rainfall deficit of 40-100mm in most parts of the country.

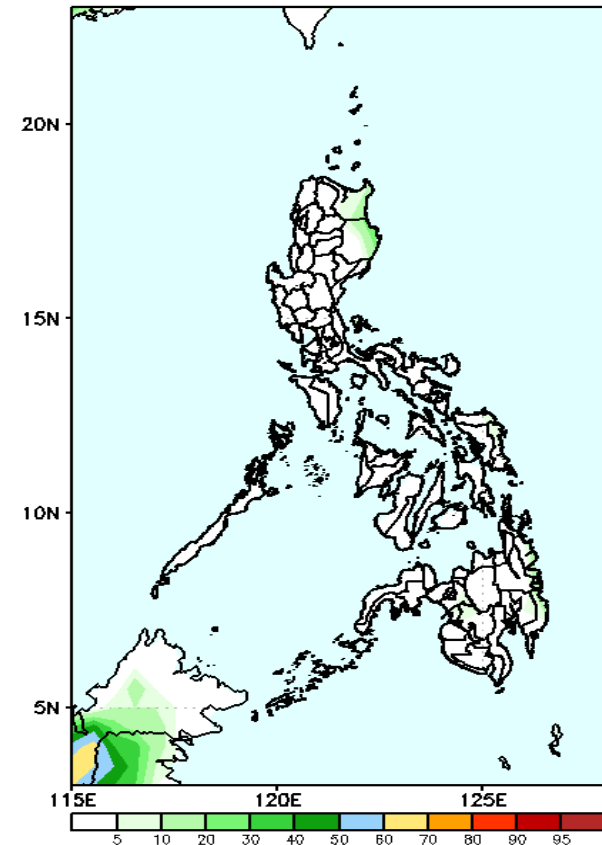
GEFS Week-2 Exceedance Prob. > 25mm  
Valid: 20240311 - 20240317



## Probability to Exceed 25mm

- Low to moderate over the eastern sections of the country;
- Low over the rest of the country.

GEFS Week-2 Exceedance Prob. > 50mm  
Valid: 20240311 - 20240317



## Probability to Exceed 50mm

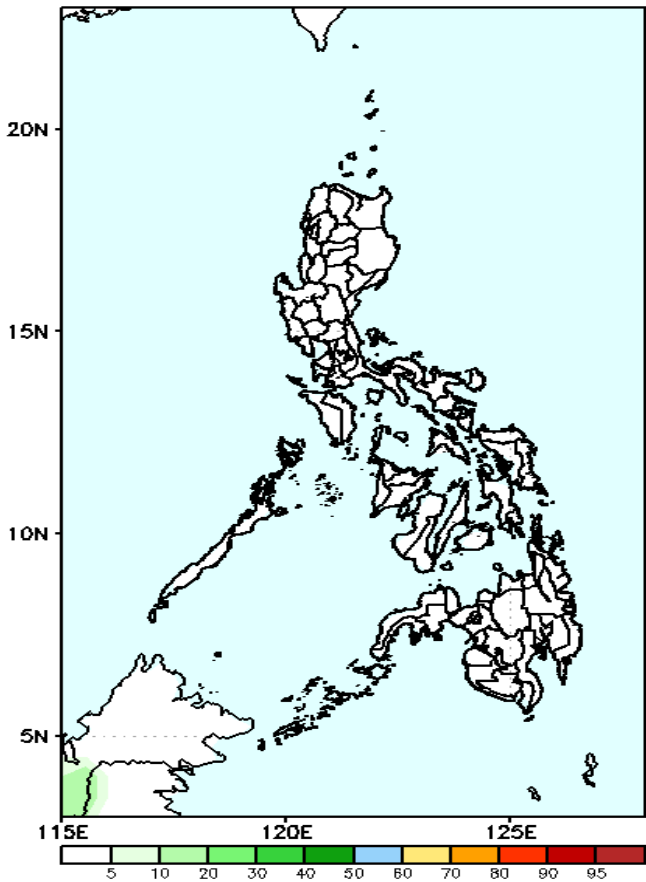
- Low across the country.

# Exceedance Probability > 100/150/200 mm

Week 2: Mar 11-17, 2024

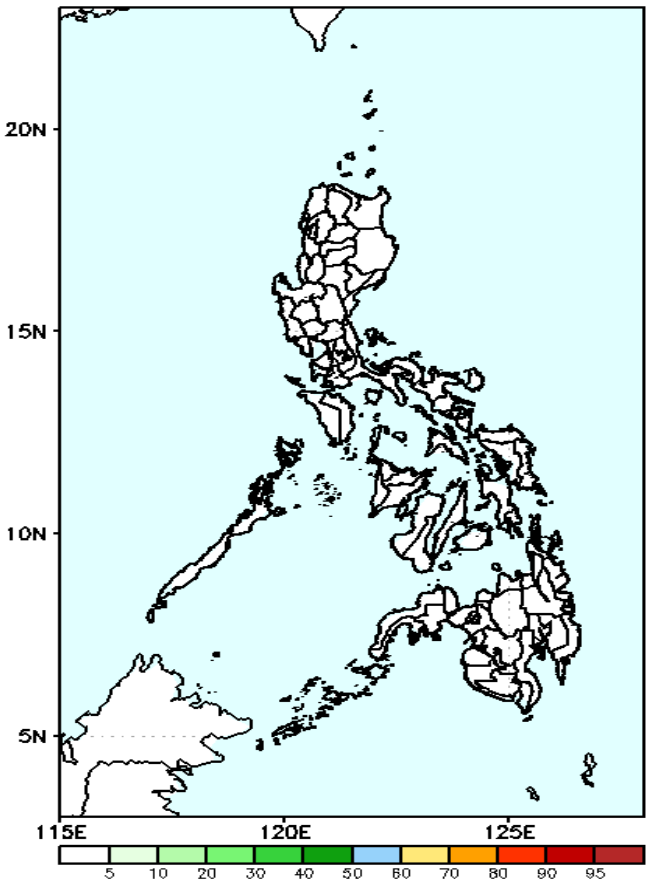
- Very high probability
- High Probability
- Moderate Probability
- Low Probability

GEFS Week-2 Exceedance Prob. > 100mm  
Valid: 20240311 – 20240317



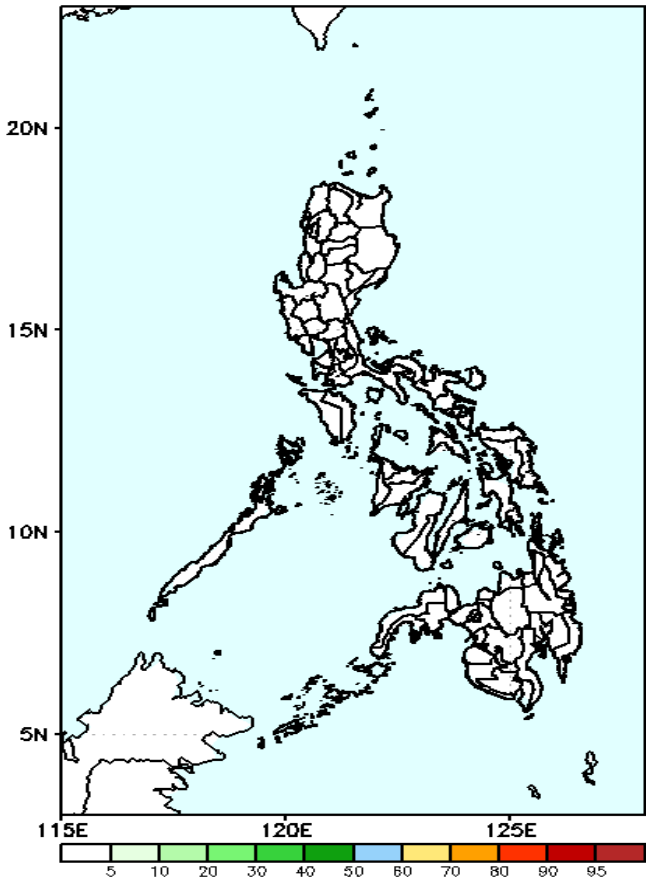
Probability to Exceed 100mm  
• Low across the country.

GEFS Week-2 Exceedance Prob. > 150mm  
Valid: 20240311 – 20240317



Probability to Exceed 150mm  
• Low across the country.

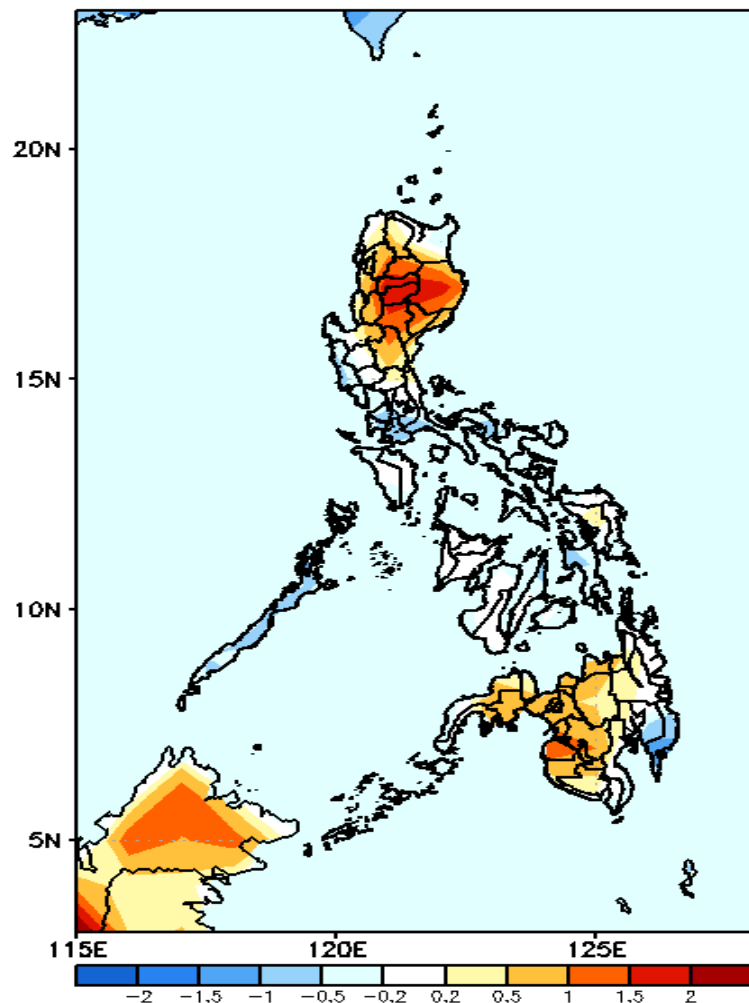
GEFS Week-2 Exceedance Prob. > 200mm  
Valid: 20240311 – 20240317



Probability to Exceed 200mm  
• Low across the country.

# GEFS Week-1 & 2 Forecasts: T2m Anomaly

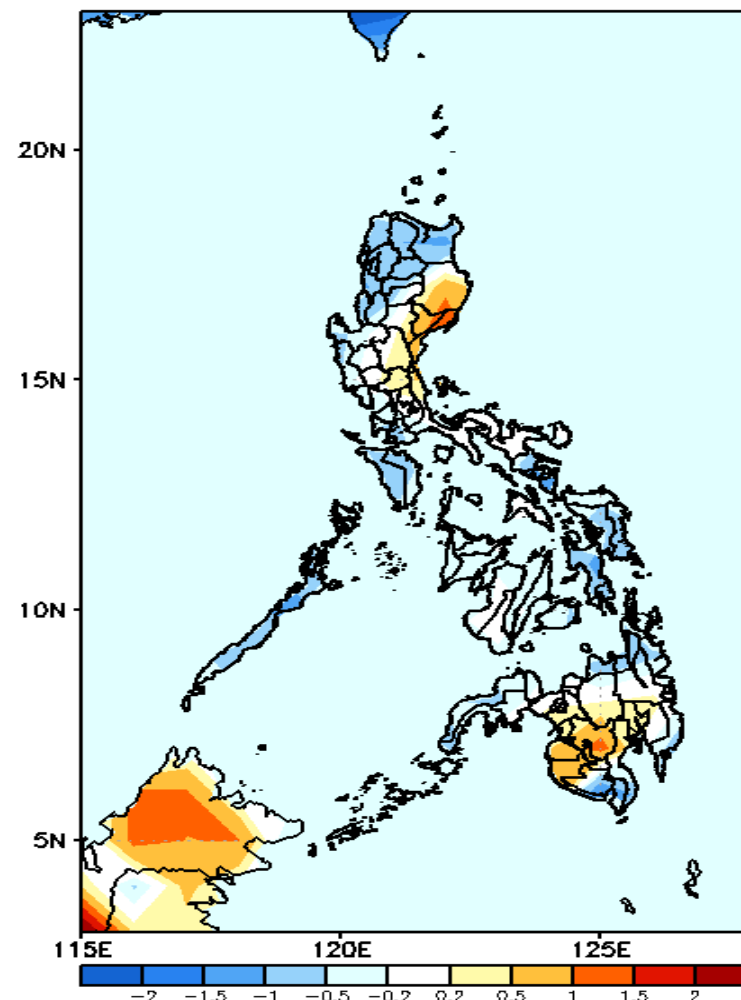
GEFS Week-1 T2m Anomaly  
Valid: 20240304 – 20240310



## 2m Temperature Week 1: March 04-10, 2024

Slightly to warmer than average surface air temperature will likely be experienced in most parts of northern & central Luzon and Mindanao while average to slightly cooler in Davao Region and for the rest of the country.

GEFS Week-2 T2m Anomaly  
Valid: 20240311 – 20240317



## 2m Temperature Week 2: Mar 11-17, 2024

Average to cooler than average surface air temperature will likely be experienced in most parts of the country except in some areas in eastern section of Luzon, Maguindanao, Sultan Kudarat and North Cotabato where slightly average to warmer than average temperature is expected.