



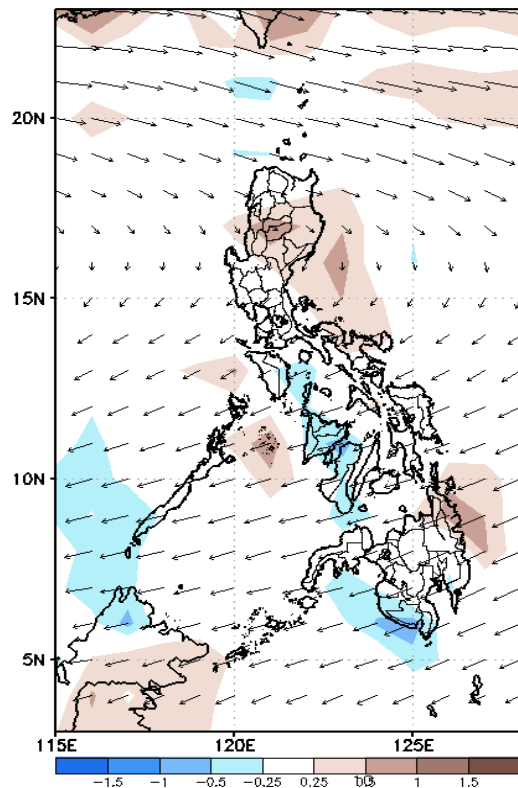
Week 1 & Week 2 Forecast for the Philippines using GEFS Model



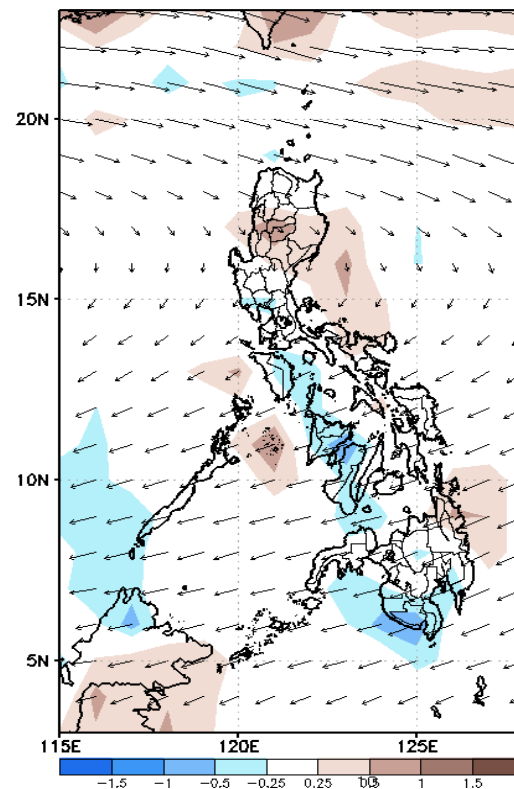
GEFS Week-1 Forecasts: Wind Forecast

Week 1: March 06-12, 2024

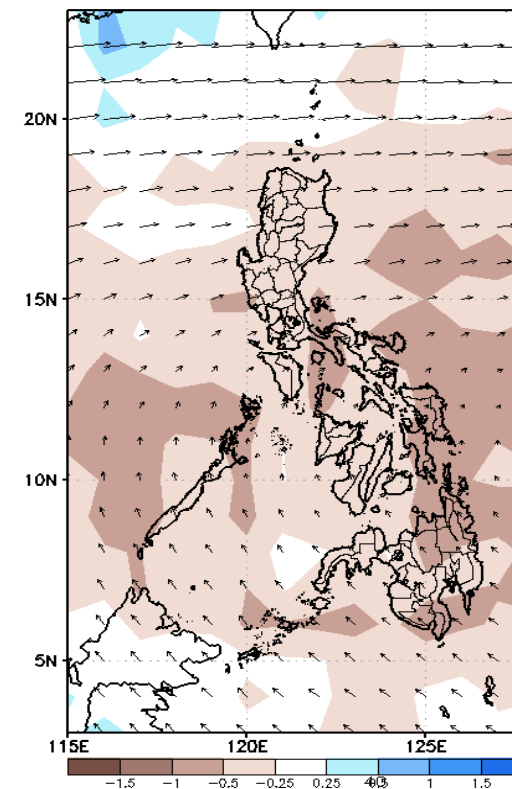
GEFS Week-1 850-hPa Divergence and Wind Anomaly
Valid: 20240306 - 20240312



GEFS Week-1 700-hPa Divergence and Wind Anomaly
Valid: 20240306 - 20240312



GEFS Week-1 200-hPa Divergence and Wind Anomaly
Valid: 20240306 - 20240312



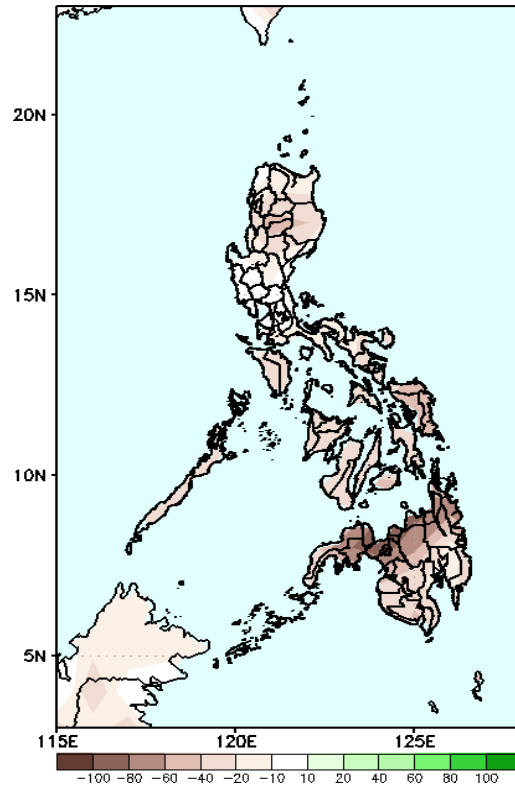
Northeast Monsoon will likely affect Northern Luzon; Easterlies for the rest of the country.

Precipitation Anomaly and Exceedance Probability > 25/50 mm



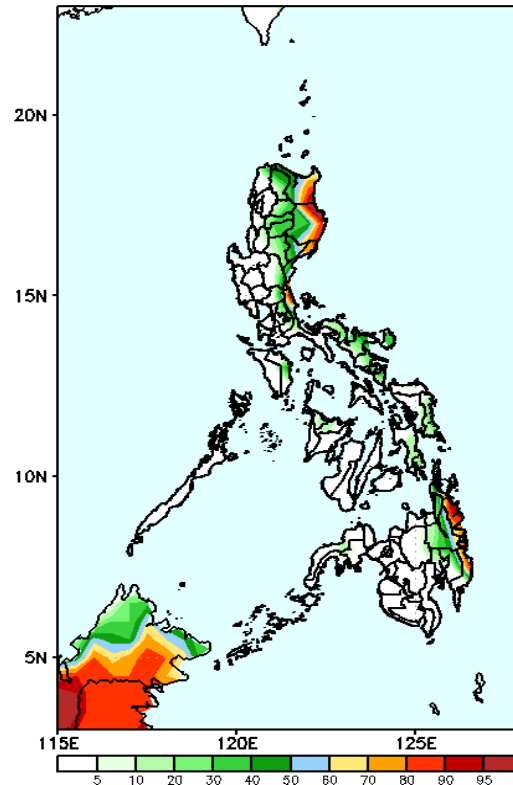
Week 1: March 06-12, 2024

GEFS Week-1 Precip. Anomaly
Valid: 20240306 - 20240312



Rainfall deficit of 20-80mm over most parts of the country.

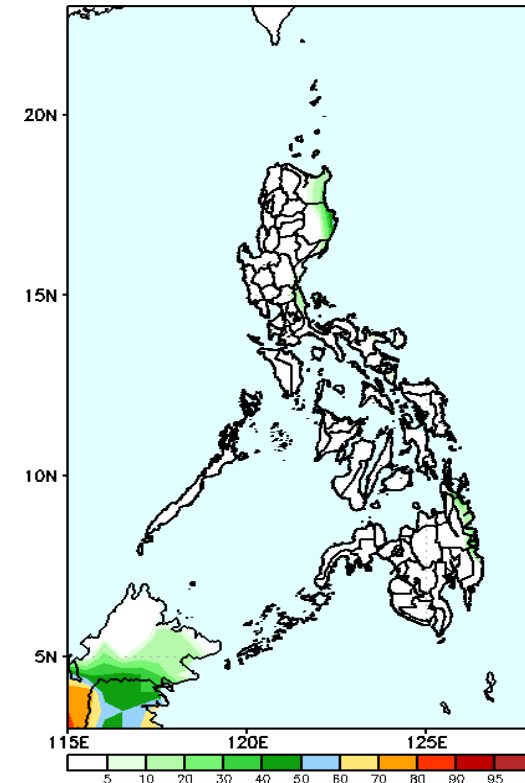
GEFS Week-1 Exceedance Prob. > 25mm
Valid: 20240306 - 20240312



Probability to Exceed 25mm

- Moderate to high over the eastern portions of Cagayan, Isabela, northern portion of Quezon, Surigao provinces and northern portion of Davao de Oro;
- Low over the rest of the country.

GEFS Week-1 Exceedance Prob. > 50mm
Valid: 20240306 - 20240312



Probability to Exceed 50mm

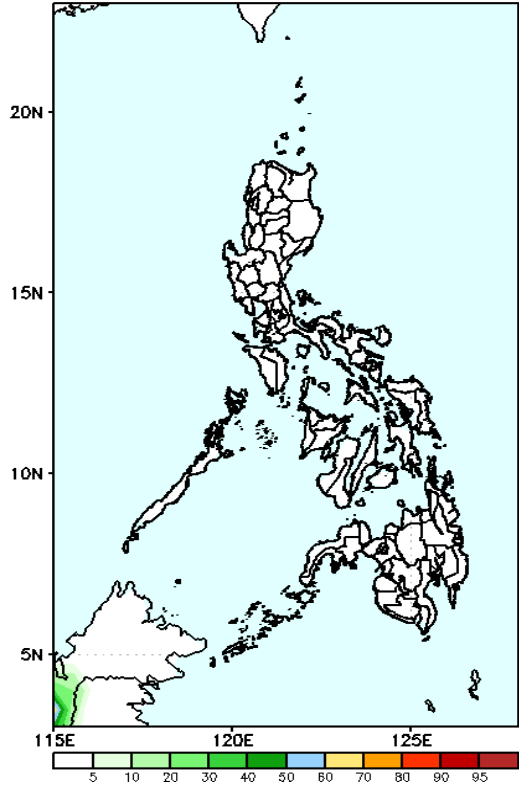
- Low across the country.

Exceedance Probability > 100/150/200 mm

Week 1: March 06-12, 2024

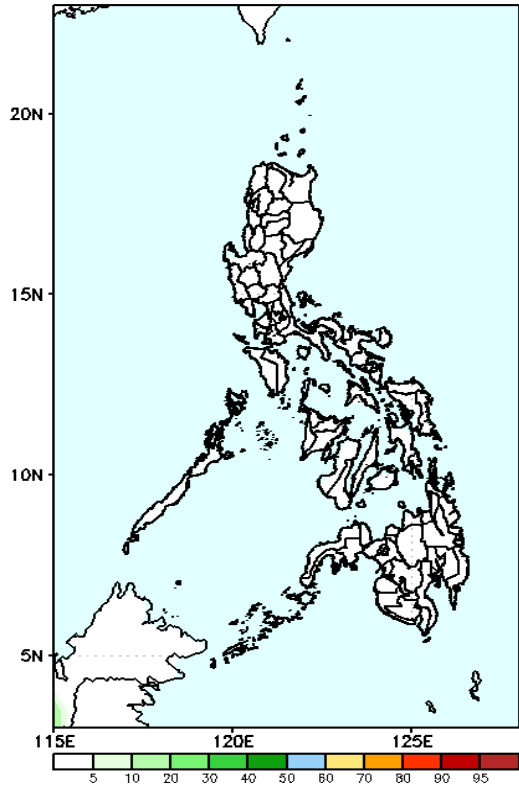
- Very high probability
- High Probability
- Moderate Probability
- Low Probability

GEFS Week-1 Exceedance Prob. > 100mm
Valid: 20240306 – 20240312



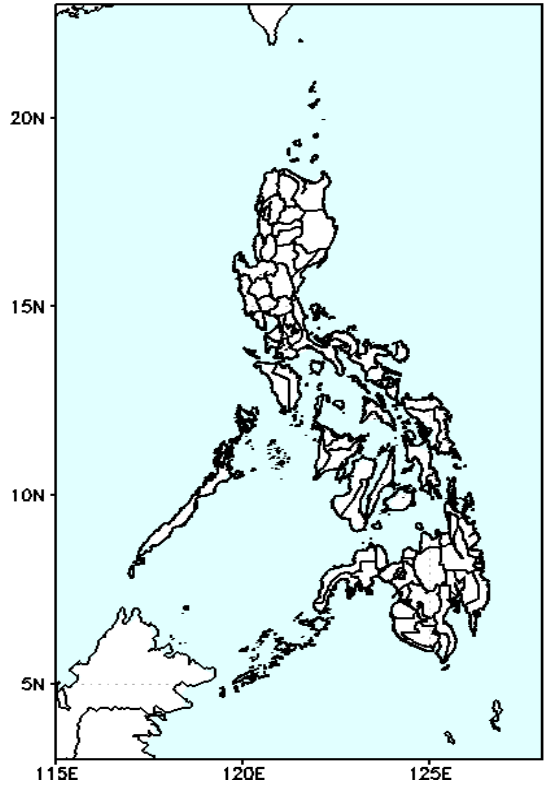
Probability to Exceed 100mm
• Low across the country.

GEFS Week-1 Exceedance Prob. > 150mm
Valid: 20240306 – 20240312



Probability to Exceed 150mm
• Low across the country.

GEFS Week-1 Exceedance Prob. > 200mm
Valid: 20240306 – 20240312

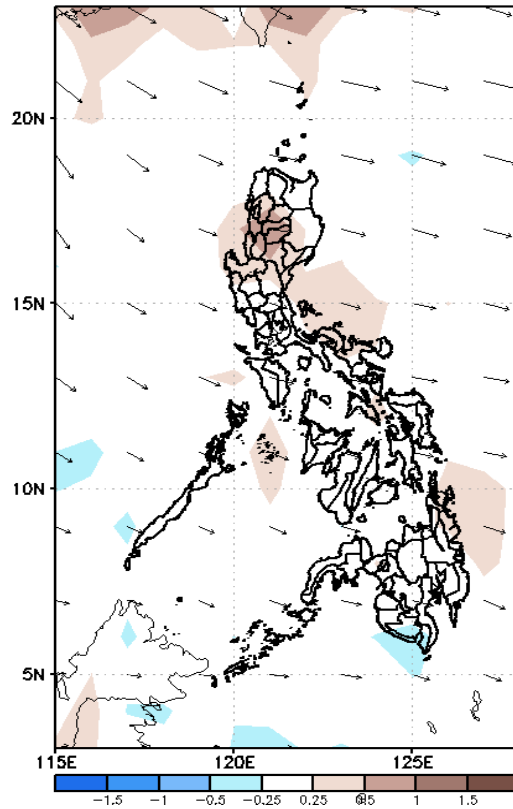


Probability to Exceed 200mm
• Low across the country.

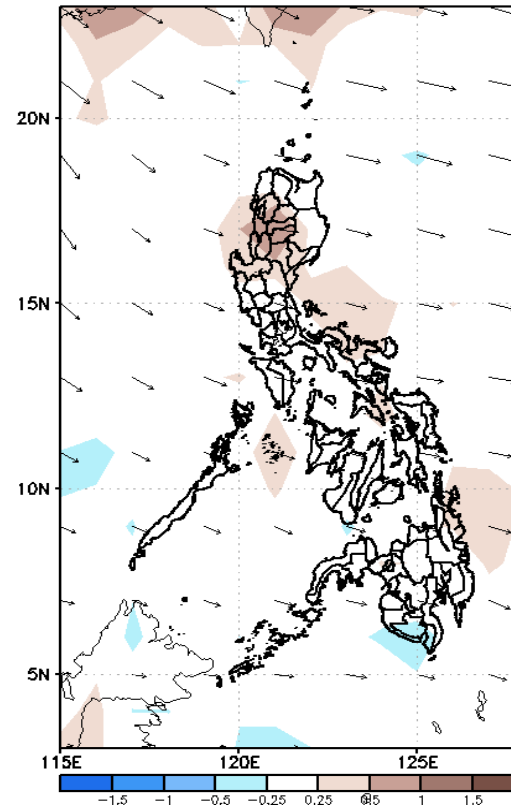
GEFS Week-2 Forecasts: Wind Forecast

Week 2: Mar 13-19, 2024

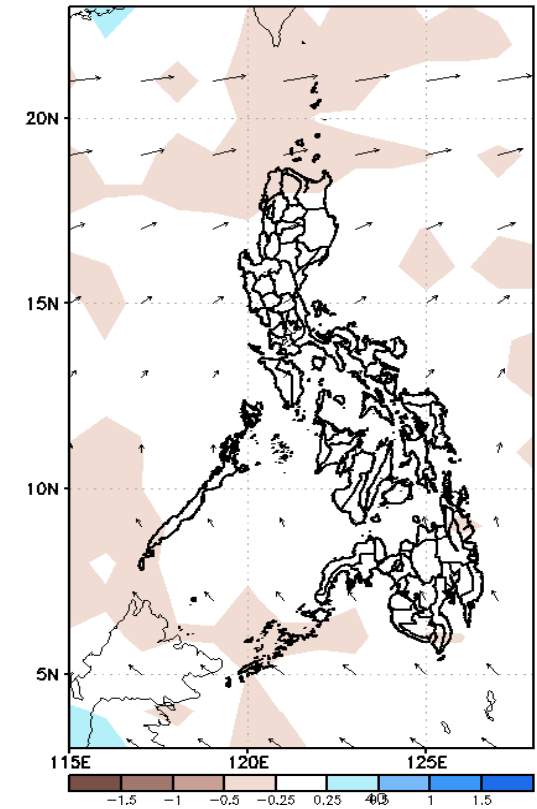
GEFS Week-2 850-hPa Divergence and Wind Anomaly
Valid: 20240313 - 20240319



GEFS Week-2 700-hPa Divergence and Wind Anomaly
Valid: 20240313 - 20240319

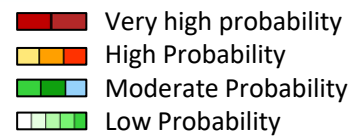


GEFS week-2 200-hPa Divergence and Wind Anomaly
Valid: 20240313 - 20240319



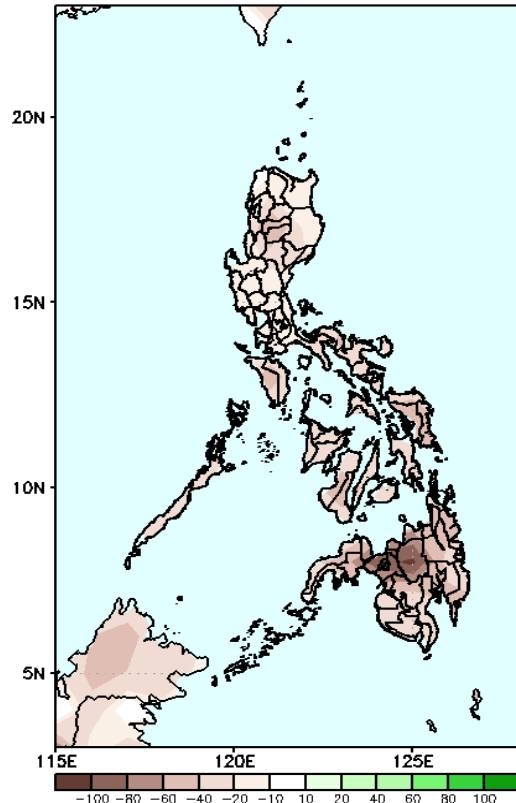
Easterlies will likely affect most parts of the country.

Precipitation Anomaly and Exceedance Probability > 25/50 mm



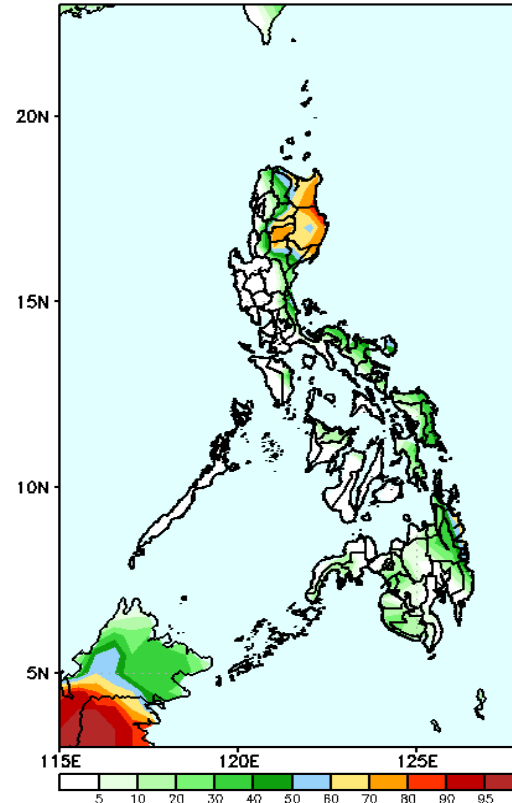
Week 2: Mar 13-19, 2024

GEFS Week-2 Precip Anomaly
Valid: 20240313 - 20240319



Rainfall deficit of 20-80mm over most parts of the country.

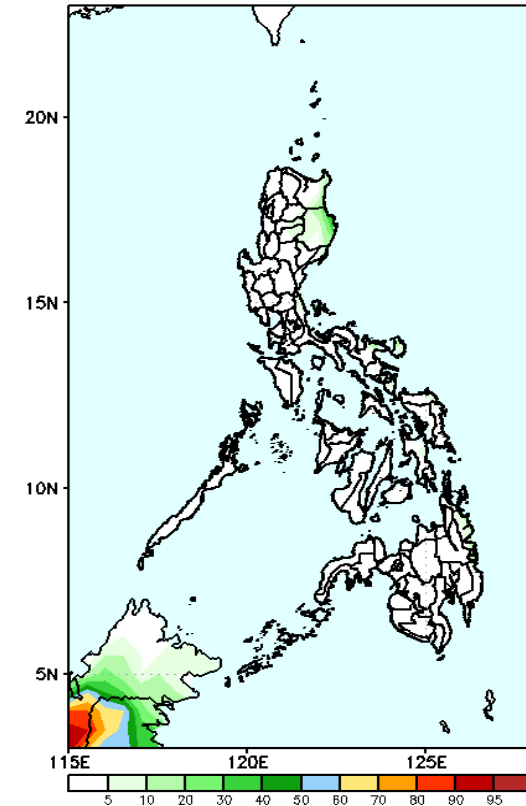
GEFS Week-2 Exceedance Prob. > 25mm
Valid: 20240313 - 20240319



Probability to Exceed 25mm

- Moderate to high over Eastern Luzon, Mountain Province and Ifugao,
- Low to moderate over the eastern sections of Visayas and Mindanao;
- Low over the rest of the country.

GEFS Week-2 Exceedance Prob. > 50mm
Valid: 20240313 - 20240319



Probability to Exceed 50mm

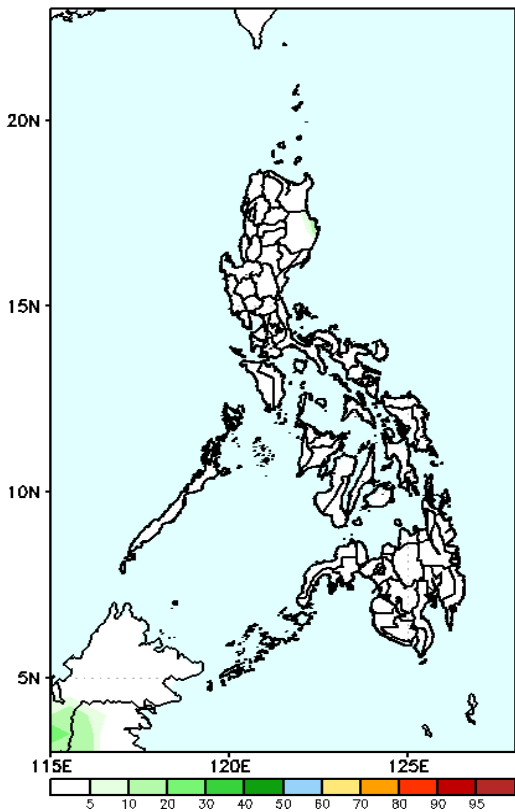
- Low across the country.

Exceedance Probability > 100/150/200 mm

Week 2: Mar 13-19, 2024

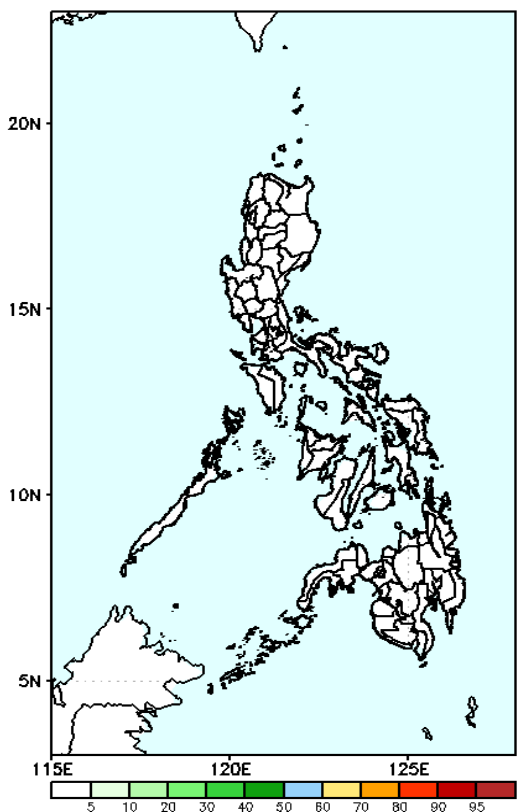
- Very high probability
- High Probability
- Moderate Probability
- Low Probability

GEFS Week-2 Exceedance Prob. > 100mm
Valid: 20240313 - 20240319



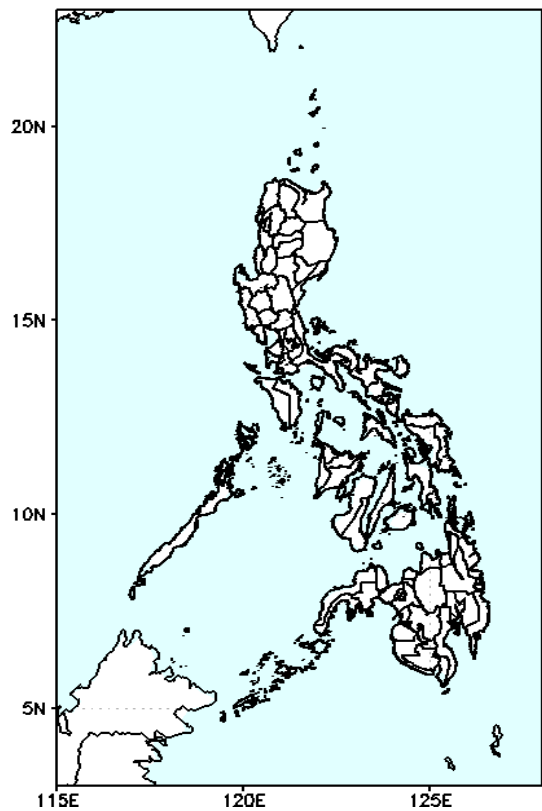
Probability to Exceed 100mm
• Low across the country.

GEFS Week-2 Exceedance Prob. > 150mm
Valid: 20240313 - 20240319



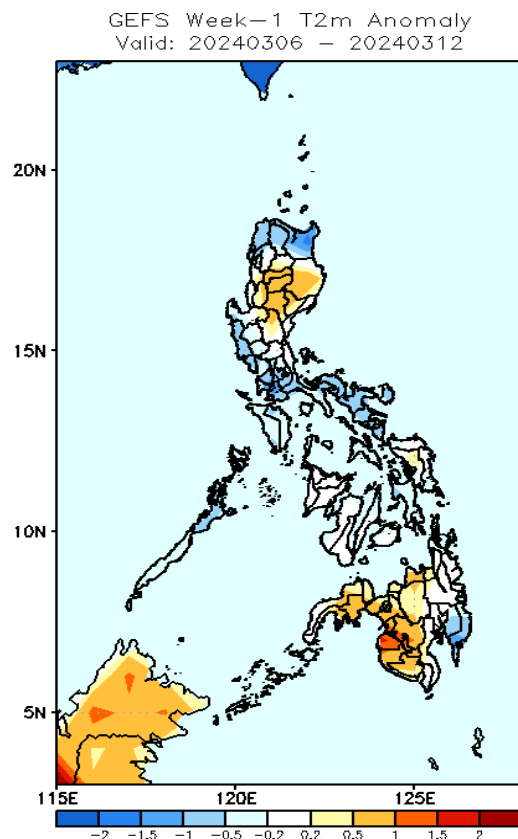
Probability to Exceed 150mm
• Low across the country.

GEFS Week-2 Exceedance Prob. > 200mm
Valid: 20240313 - 20240319



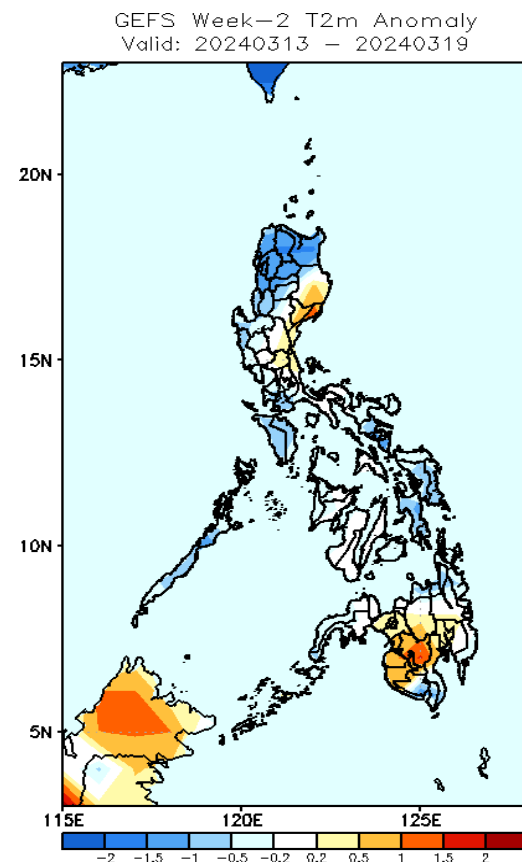
Probability to Exceed 200mm
• Low across the country.

GEFS Week-1 & 2 Forecasts: T2m Anomaly



2m Temperature Week 1: Mar 01-12, 2024

Slightly warmer to warmer than average surface air temperature will likely be experienced in the southern parts of Northern Luzon, Nueva Ecija and most parts of Mindanao except Davao region while slightly cooler to cooler average surface temperature for the rest of the country.



2m Temperature Week 2: Mar 13-19, 2024

Average to cooler than average surface air temperature will likely be experienced in most parts of the country except in Isabela, Quirino, Aurora and Western and Central Mindanao where slightly average to warmer than average surface air temperature is expected.