



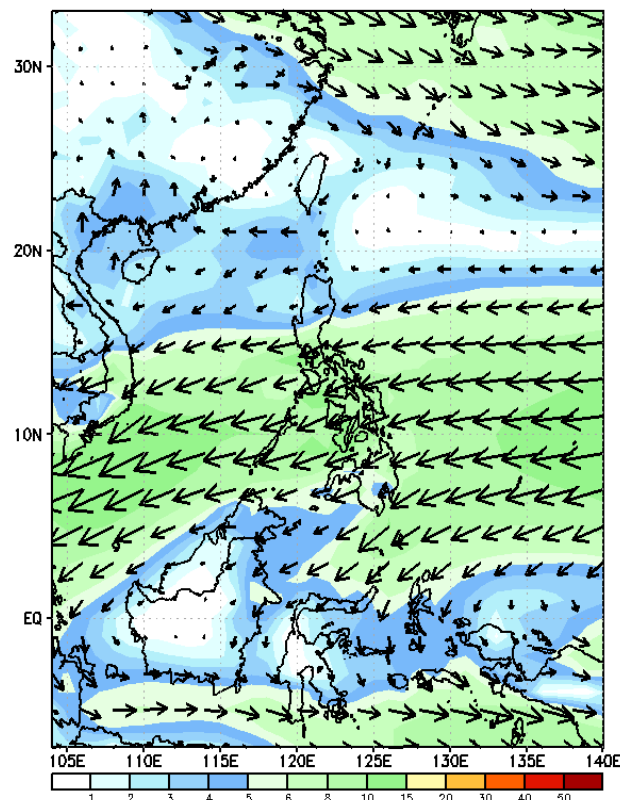
Week 1 & Week 2 Forecast for the Philippines using GEFS Model



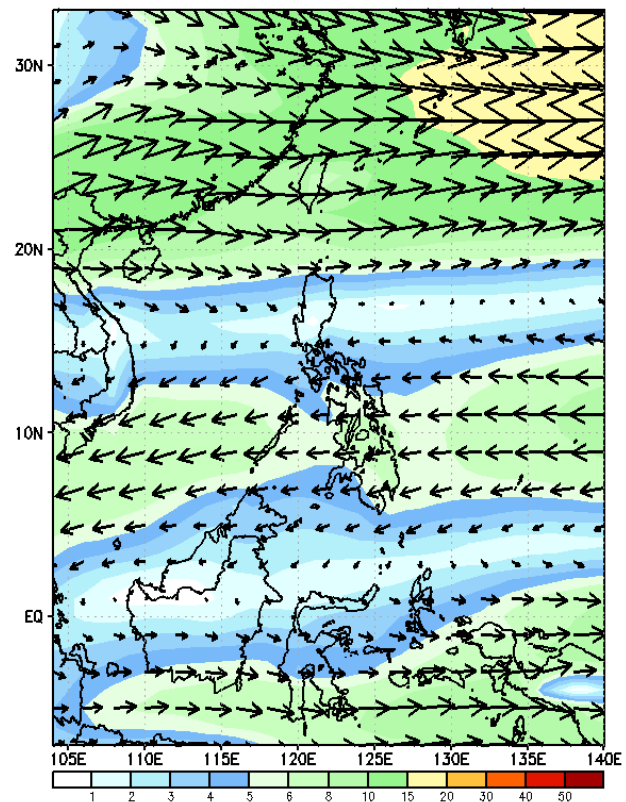
GEFS Week-1 Forecasts: Wind Forecast

Week 1: February 05-11, 2024

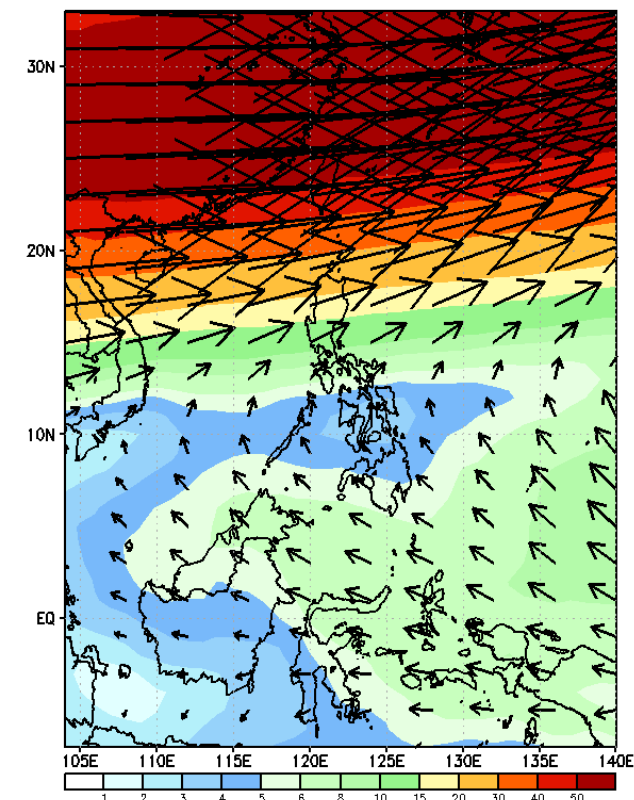
GEFS Week-1 850-hPa Wind Total
Valid: 20240207 - 20240213



GEFS Week-1 700-hPa Wind Total
Valid: 20240207 - 20240213



GEFS Week-1 200-hPa Wind Total
Valid: 20240207 - 20240213



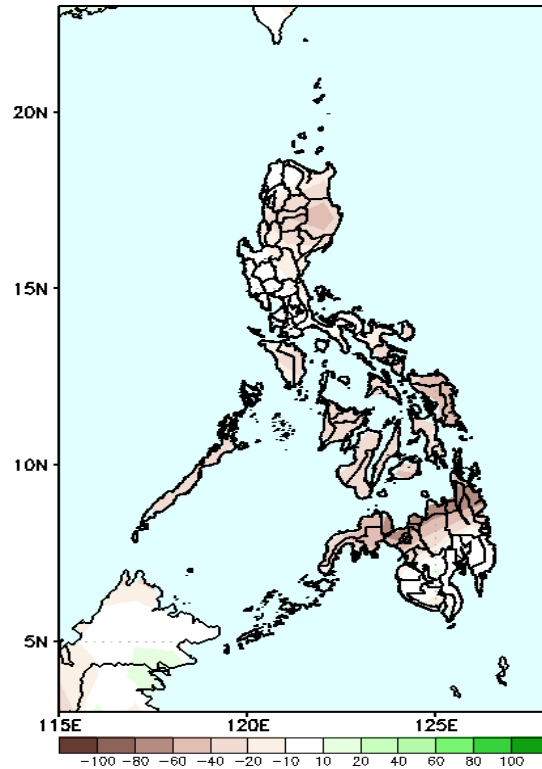
Northeast Monsoon will likely affect Northern Luzon; Easterlies affecting the rest of the country.

Precipitation Anomaly and Exceedance Probability > 25/50 mm



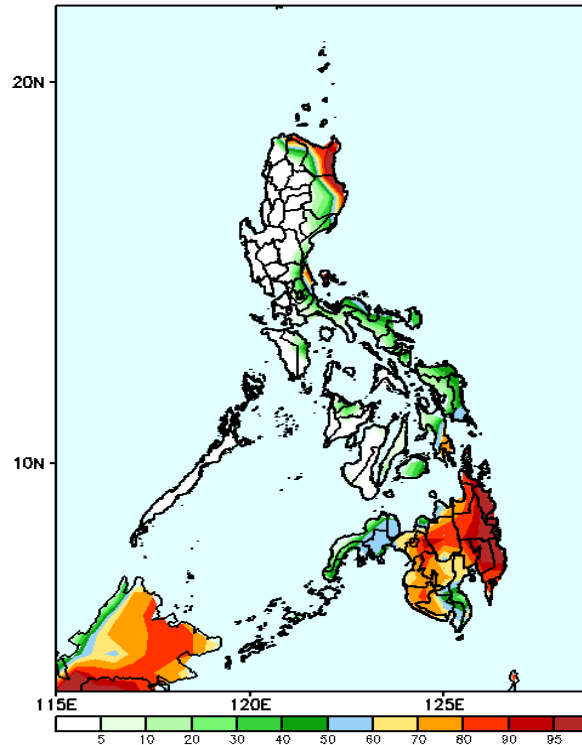
Week 1: February 05-11, 2024

GEFS Week-1 Precip Anomaly
Valid: 20240207 - 20240213



Rainfall deficit of 40-80mm in most parts of the country is likely.

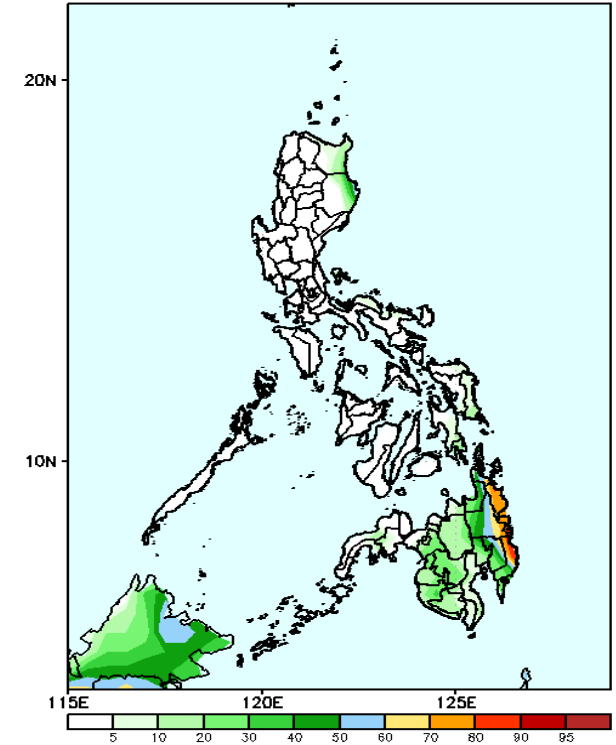
GEFS Week-1 Exceedance Prob. > 25mm
Valid: 20240207 - 20240213



Probability to Exceed 25mm

- High to very high over the eastern portions of Cagayan and Isabela, and Eastern Mindanao;
- Moderate to high over northern portions of Apayao and Quezon, Southern Leyte, and the rest of Mindanao;
- Low to moderate over the rest of Eastern Luzon, Bicol Region and Eastern Visayas;
- Low over the rest of the country.

GEFS Week-1 Exceedance Prob. > 50mm
Valid: 20240207 - 20240213

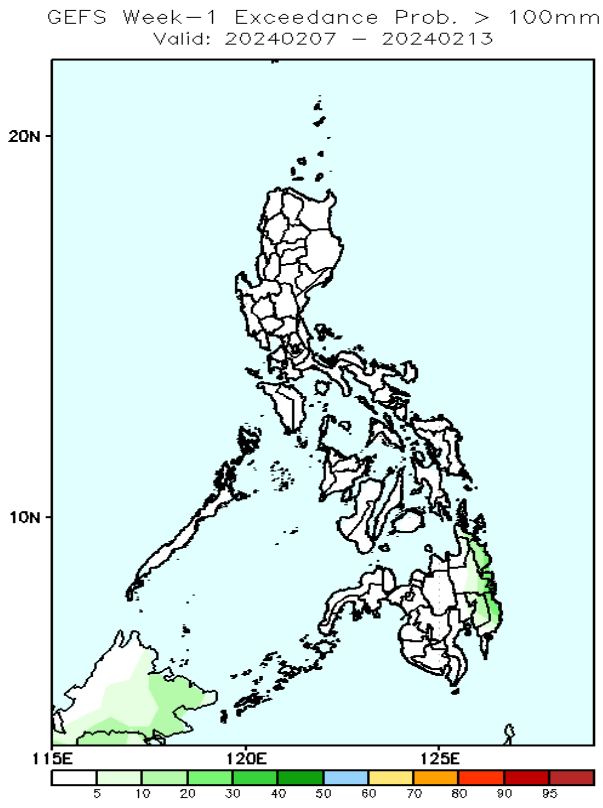
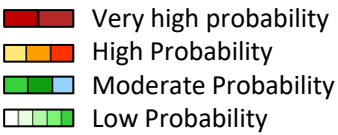


Probability to Exceed 50 mm

- Moderate to high over Surigao provinces, Agusan del Sur, Davao de Oro and Davao Oriental;
- Low over the rest of the country.

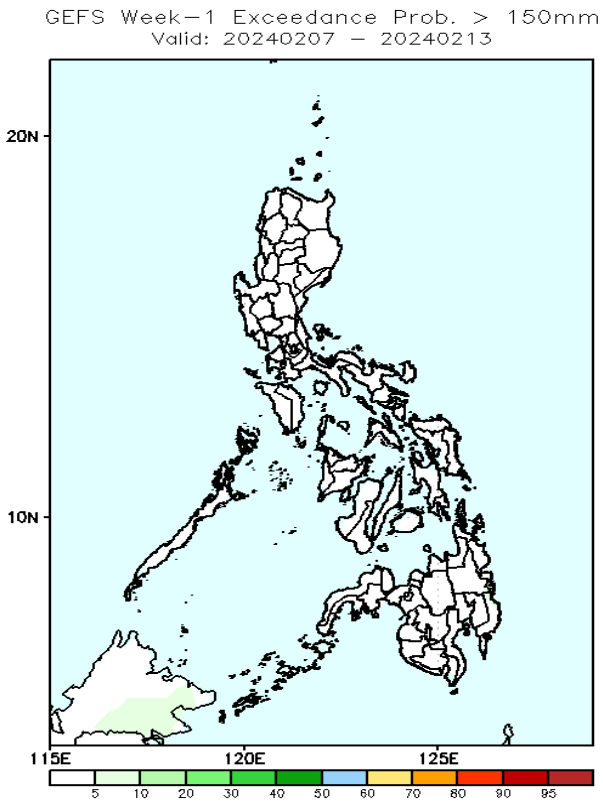
Exceedance Probability > 100/150/200 mm

Week 1: February 05-11, 2024



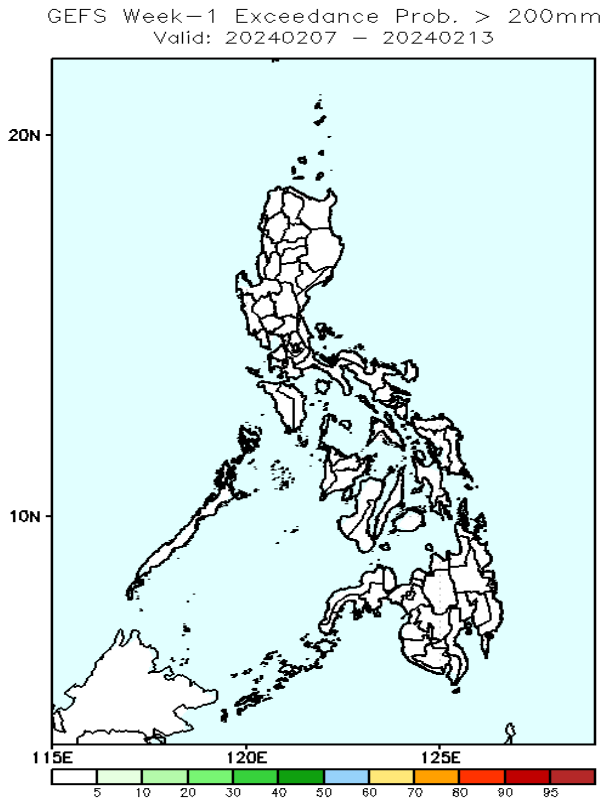
Probability to Exceed 100mm

- Low across the country.



Probability to Exceed 150mm

- Low across the country.



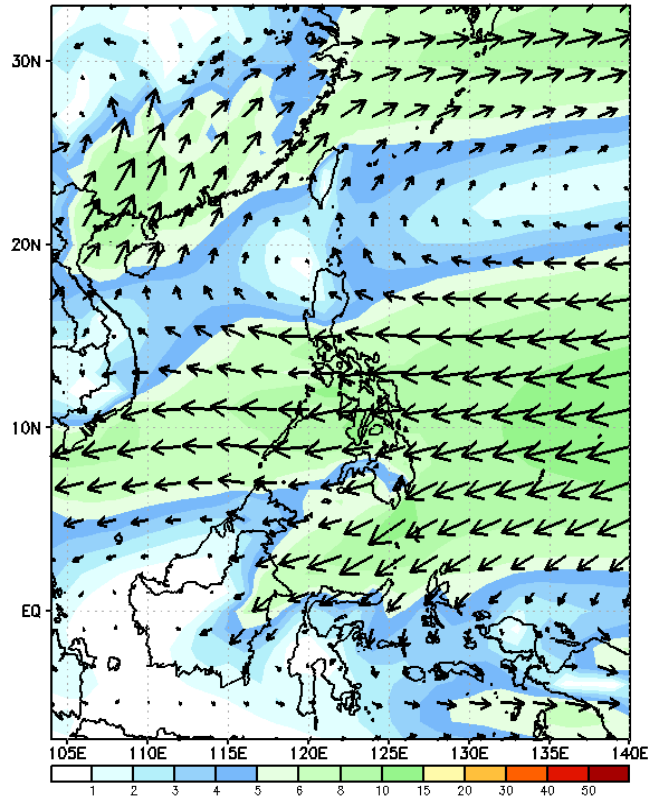
Probability to Exceed 200mm

- Low across the country.

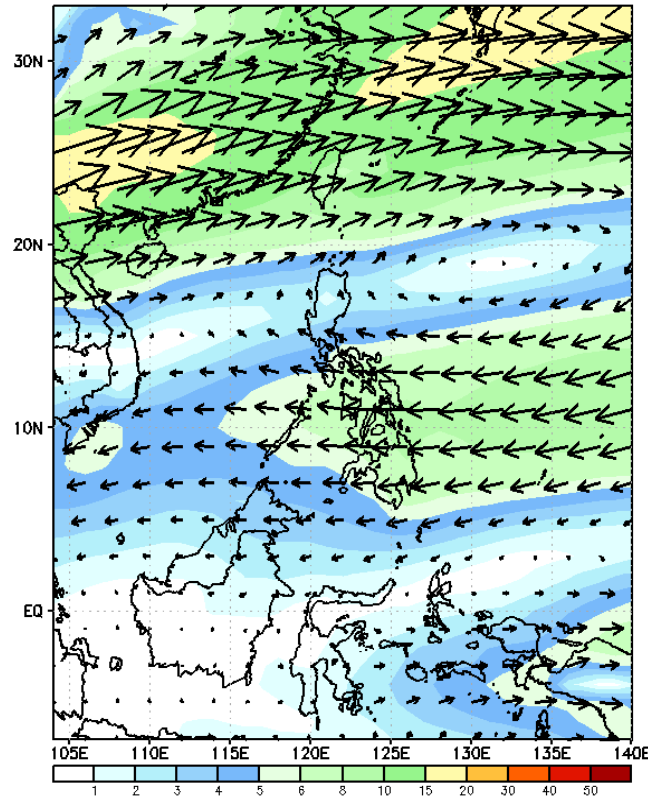
GEFS Week-2 Forecasts: Wind Forecast

Week 2: February 14-20, 2024

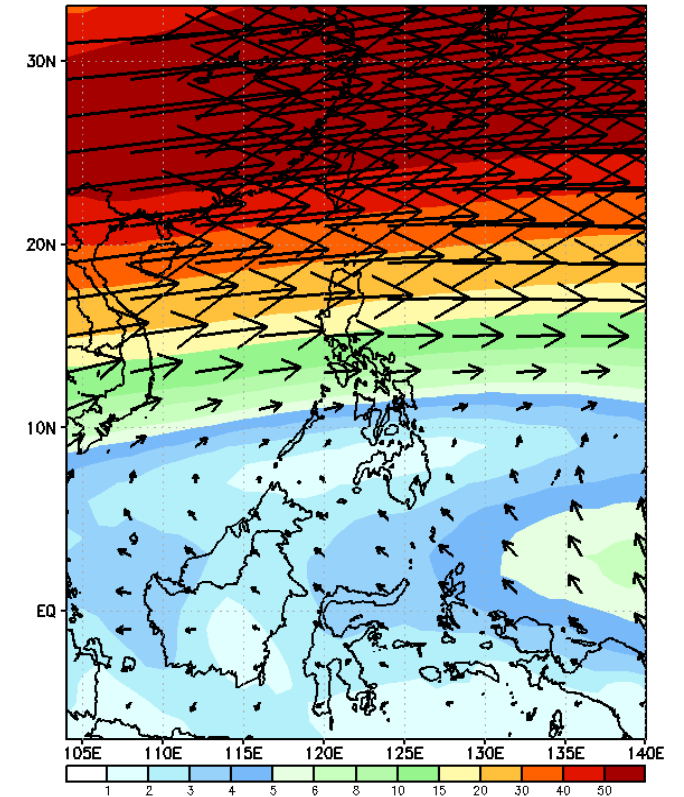
GEFS Week-2 850-hPa Wind Total
Valid: 20240214 - 20240220



GEFS Week-2 700-hPa Wind Total
Valid: 20240214 - 20240220

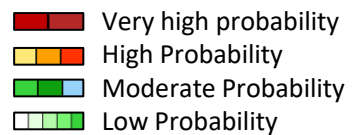


GEFS Week-2 200-hPa Wind Total
Valid: 20240214 - 20240220



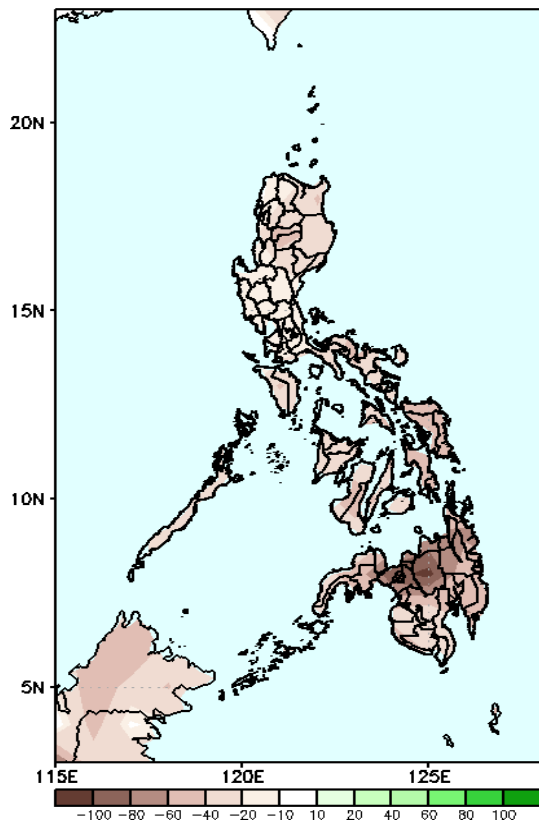
Easterlies will likely affect most parts of the country.

Precipitation Anomaly and Exceedance Probability > 25/50 mm



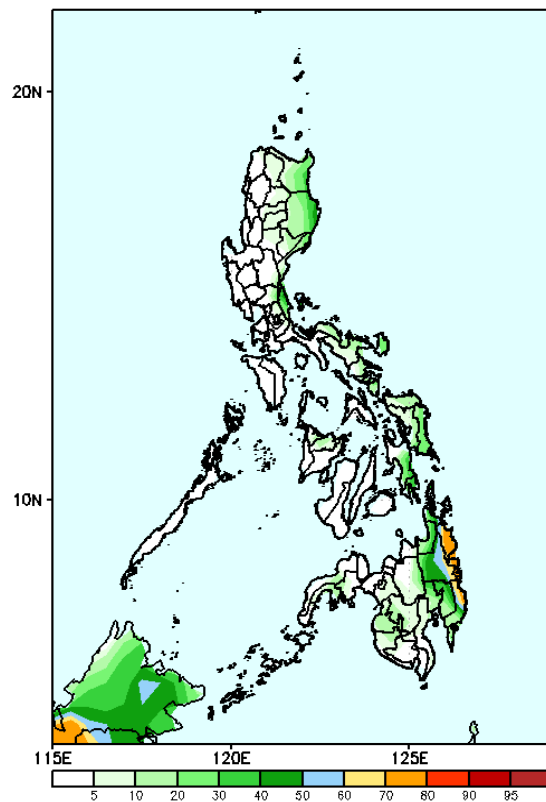
Week 2: February 12-18, 2024

GEFS Week-2 Precip Anomaly
Valid: 20240214 - 20240220



Rainfall deficit of 40-80mm in most parts of the country is likely.

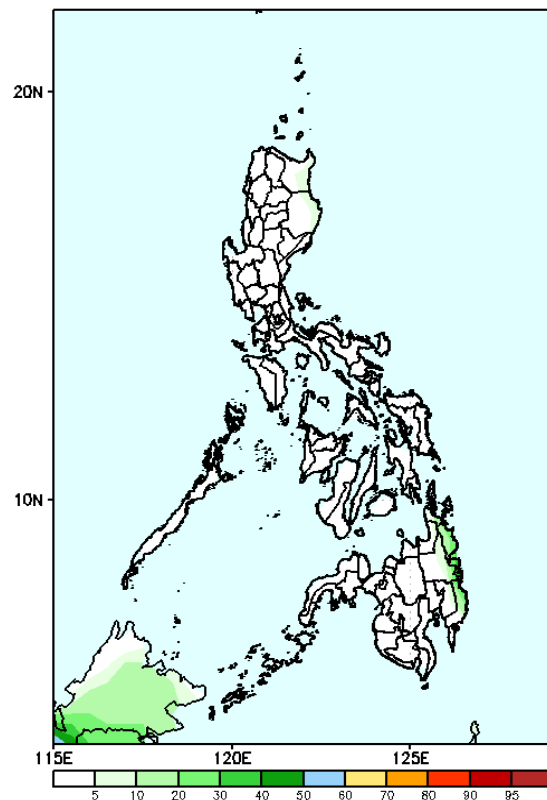
GEFS Week-2 Exceedance Prob. > 25mm
Valid: 20240214 - 20240220



Probability to Exceed 25mm

- Moderate to high over Surigao provinces, Agusan del Sur, and Davao Oriental;
- Low over the rest of the country.

GEFS Week-2 Exceedance Prob. > 50mm
Valid: 20240214 - 20240220



Probability to Exceed 50mm

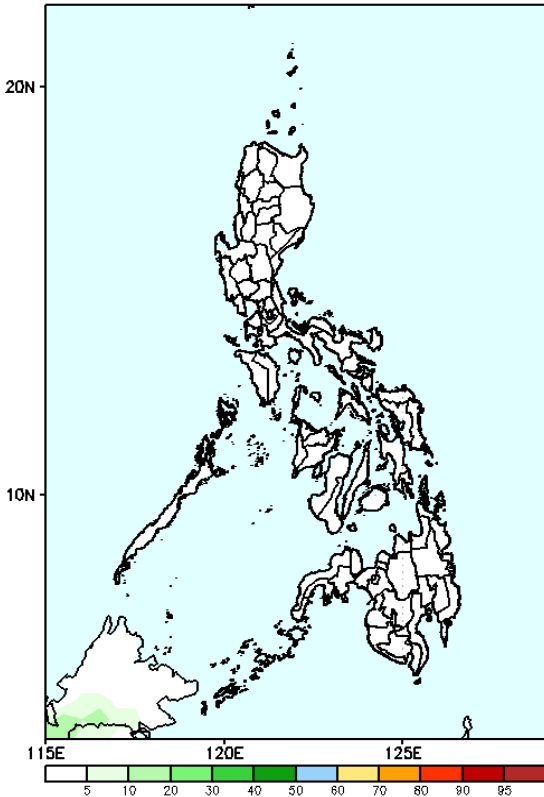
- Low across the country.

Exceedance Probability > 100/150/200 mm

Week 2: February 12-18, 2024

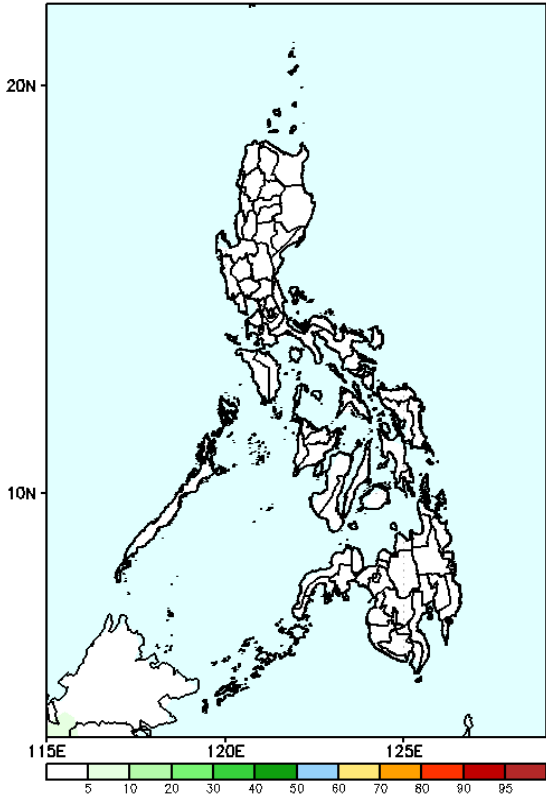
- Very high probability
- High Probability
- Moderate Probability
- Low Probability

GEFS Week-2 Exceedance Prob. > 100mm
Valid: 20240214 - 20240220



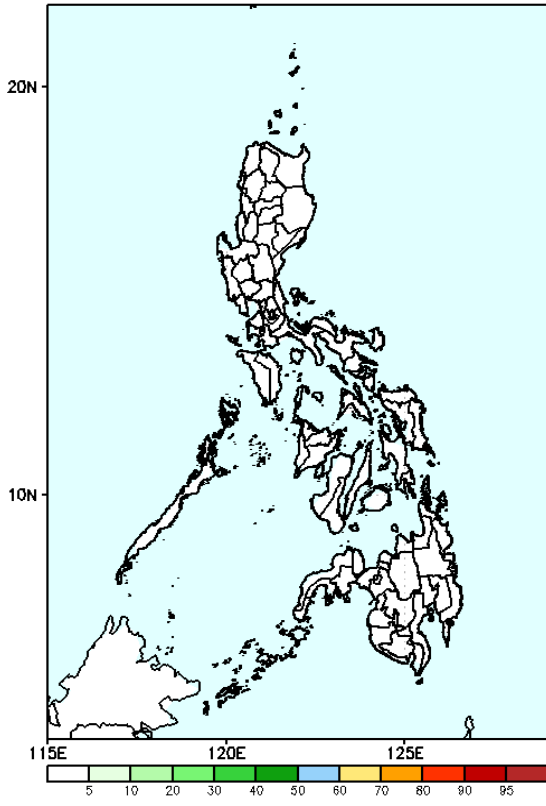
Probability to Exceed 100mm
• Low across the country.

GEFS Week-2 Exceedance Prob. > 150mm
Valid: 20240214 - 20240220



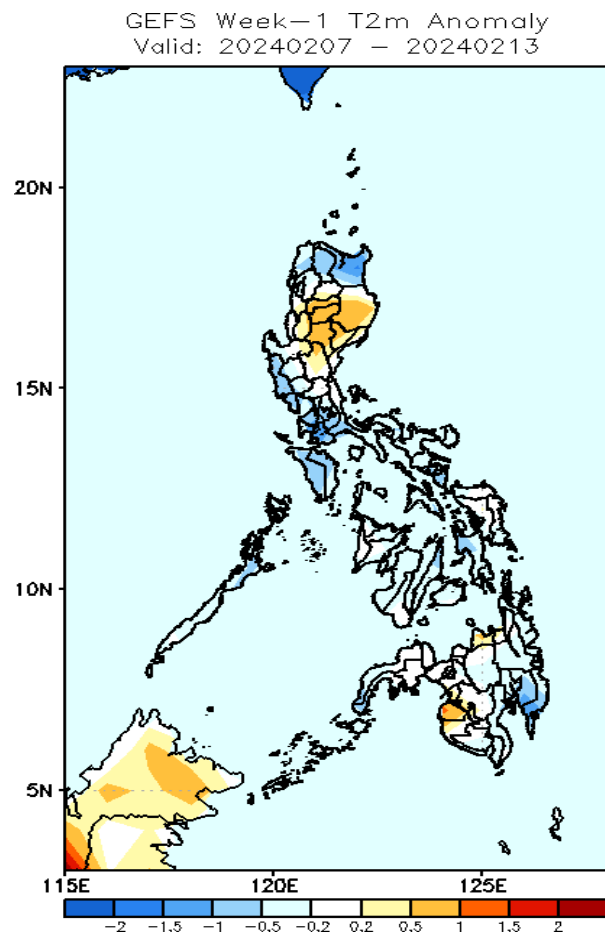
Probability to Exceed 150mm
• Low across the country.

GEFS Week-2 Exceedance Prob. > 200mm
Valid: 20240214 - 20240220



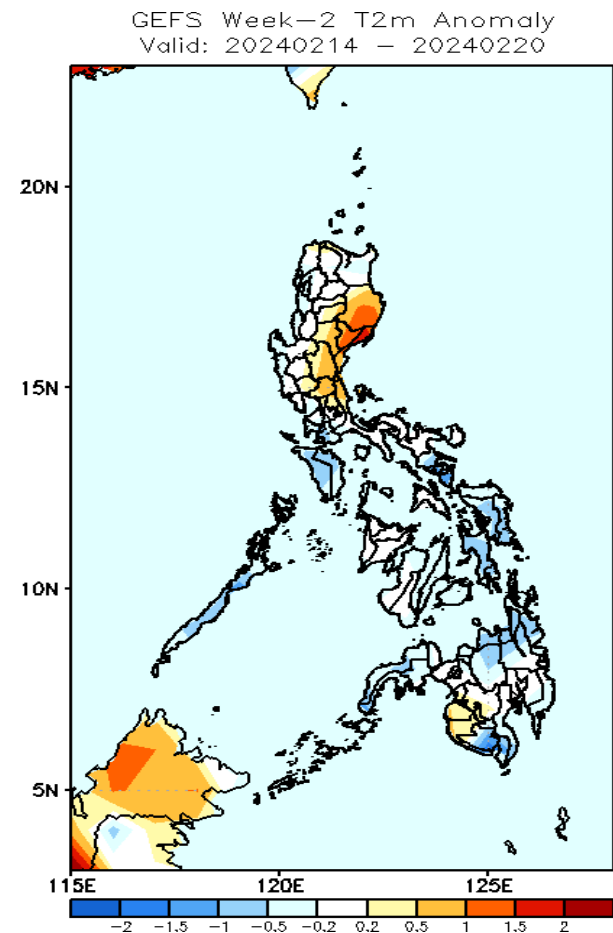
Probability to Exceed 200mm
• Low across the country.

GEFS Week-1 & 2 Forecasts: T2m Anomaly



2m Temperature Week 1: February 07-13, 2024

Near to cooler than average surface air temperature will likely be experienced in most parts of the country except the southern portion of Northern Luzon, Nueva Ecija, Misamis Oriental, Maguindanao and Sultan Kudarat where slightly warmer temperature is expected.



2m Temperature Week 2: February 14-20, 2024

Near to cooler than average surface air temperature will likely be experienced in most parts of the country except in Isabela, Aurora, Quirino, Nueva Vizcaya, Ifugao, Nueva Ecija, Bulacan, Maguindanao and Sultan Kudarat where slightly warmer to warmer than average temperature is