



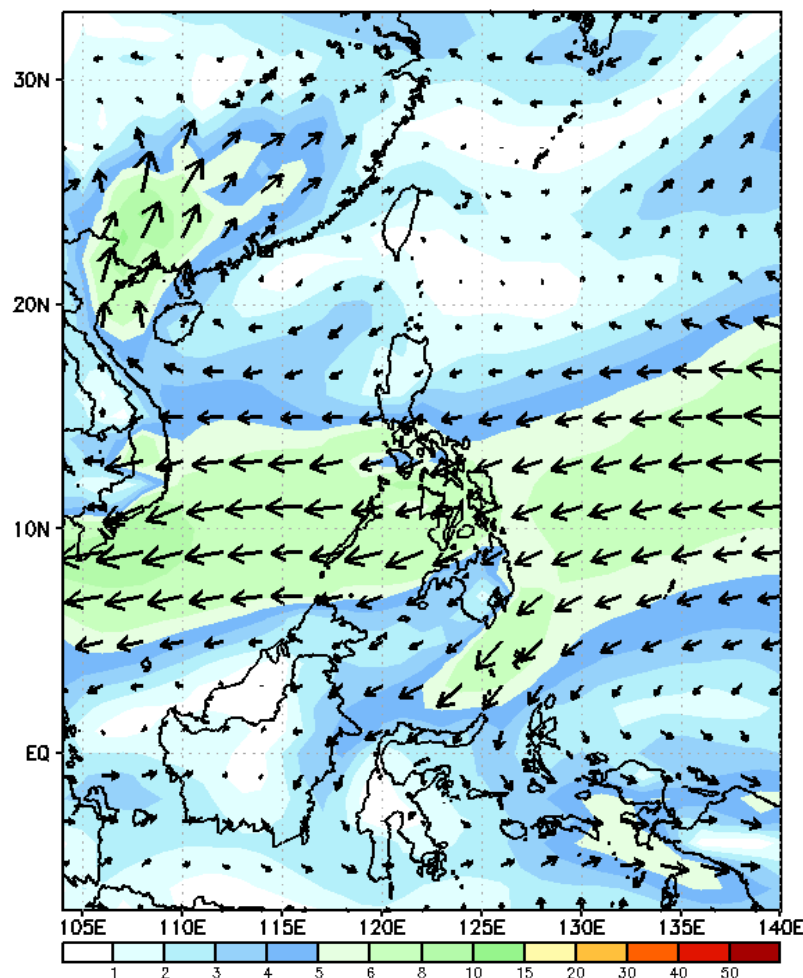
# Week 1 & Week 2 Forecast for the Philippines using GEFS Model



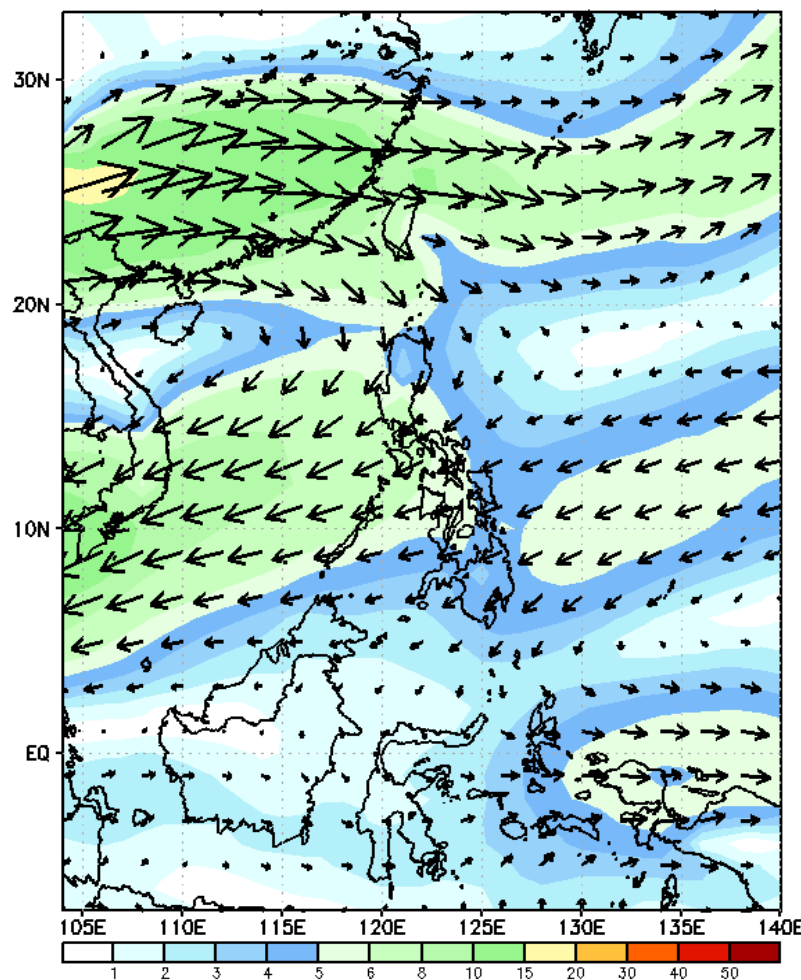
# GEFS Week-1 Wind Forecasts:

Week 1: Apr 8-14, 2024

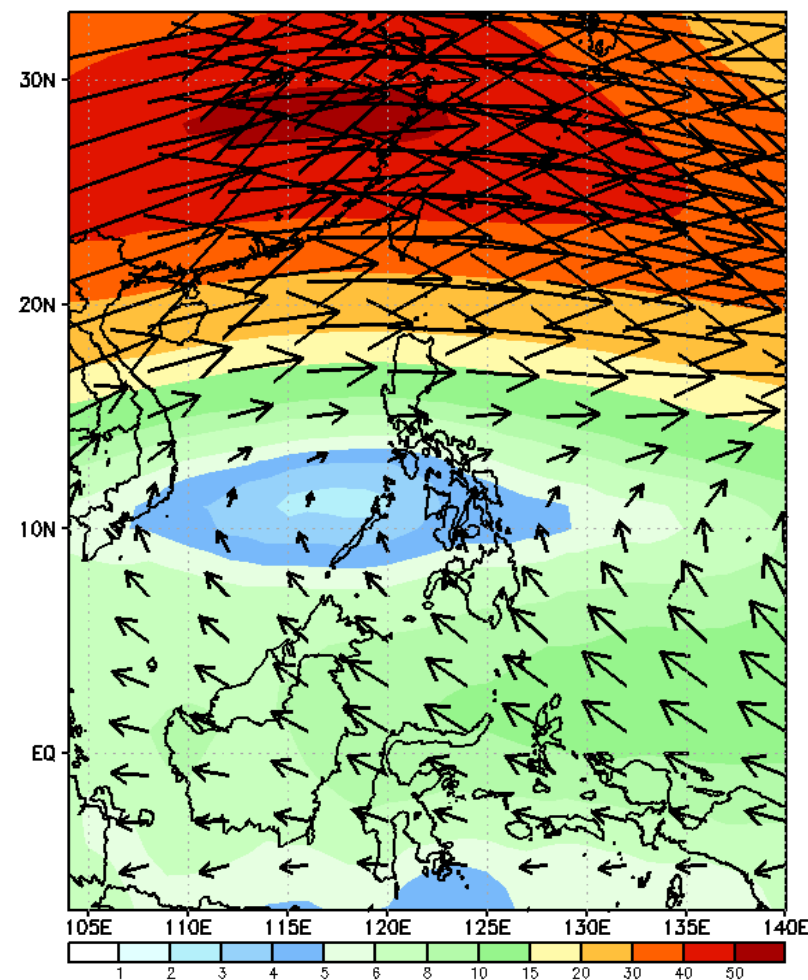
GEFS Week-1 850-hPa Wind Total  
Valid: 20240408 - 20240414



GEFS Week-1 700-hPa Wind Total  
Valid: 20240408 - 20240414

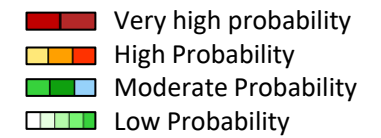


GEFS Week-1 200-hPa Wind Total  
Valid: 20240408 - 20240414



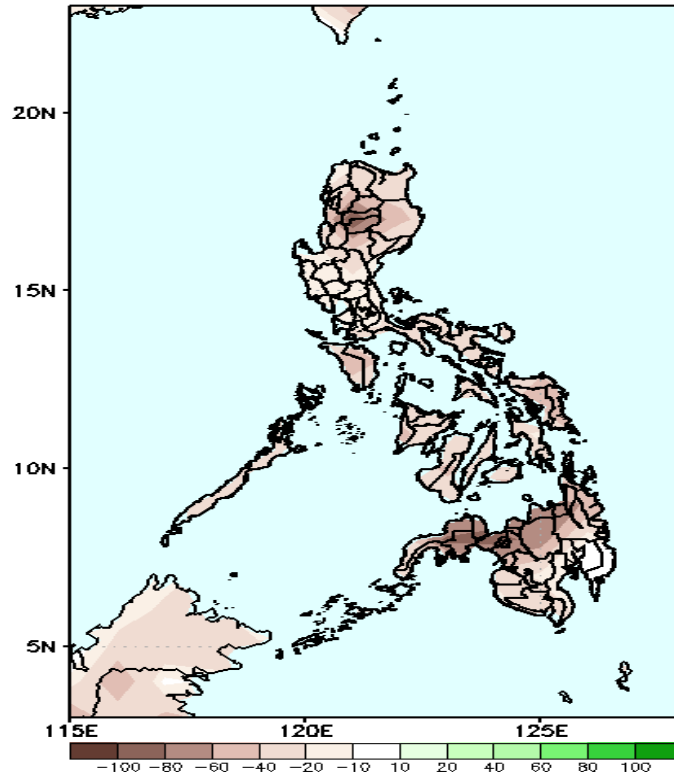
Easterlies continuously affect most parts of the country. Expect dry and warm days during the forecast period.

# Precipitation Anomaly and Exceedance Probability > 25/50 mm



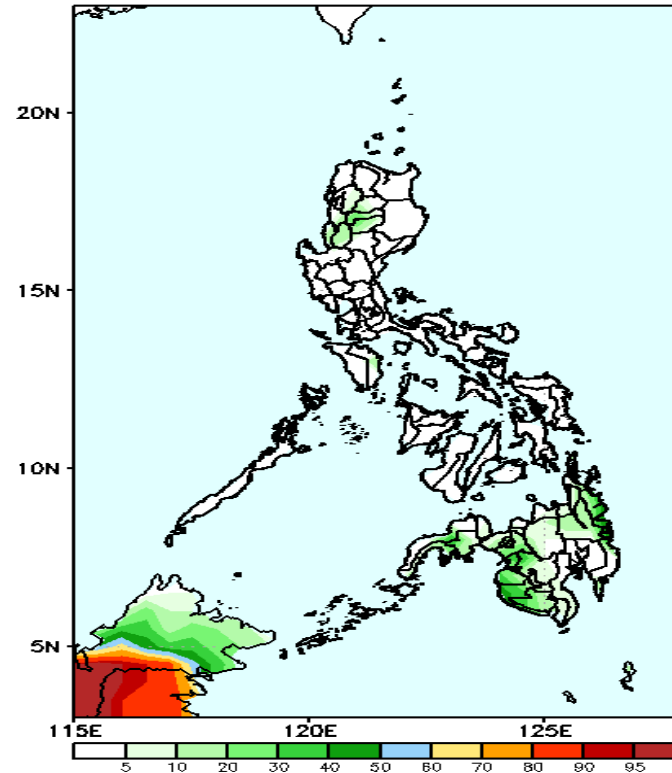
Week 1: Apr 8-14, 2024

GEFS Week-1 Precip Anomaly  
Valid: 20240408 - 20240414



Rainfall deficit of 20-80mm in most parts of Luzon, Visayas, and southern Mindanao. Moreover, 40-100mm in CAR and the rest of Mindanao.

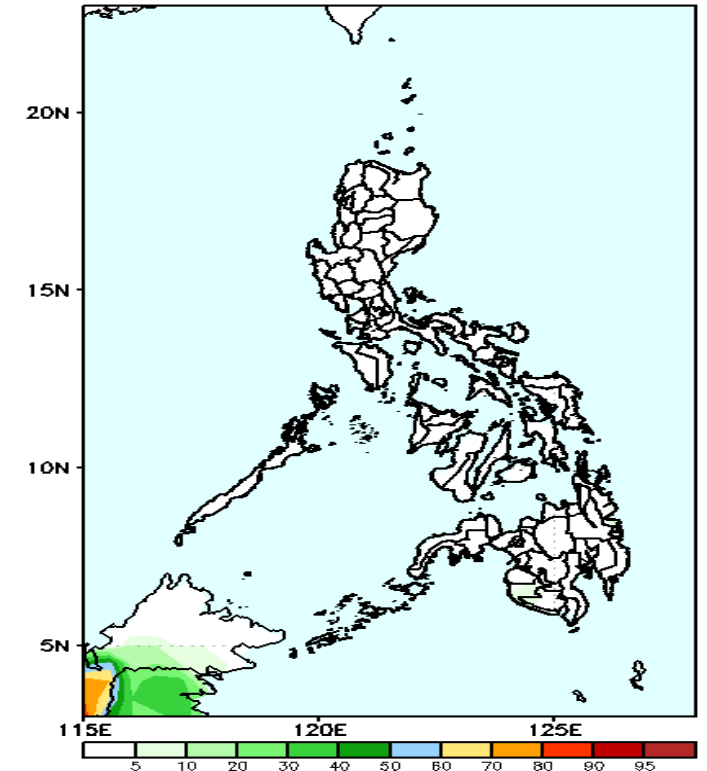
GEFS Week-1 Exceedance Prob. > 25mm  
Valid: 20240408 - 20240414



## Probability to Exceed 25mm

- Low across the country.

GEFS Week-1 Exceedance Prob. > 50mm  
Valid: 20240408 - 20240414



## Probability to Exceed 50mm

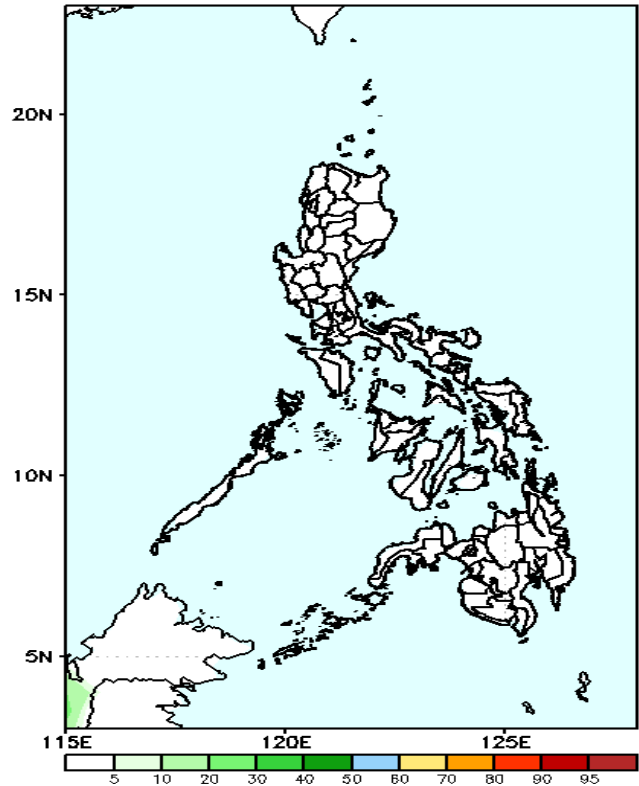
- Low across the country.

# Exceedance Probability > 100/150/200 mm

Week 1: Apr 8-14, 2024

- Very high probability
- High Probability
- Moderate Probability
- Low Probability

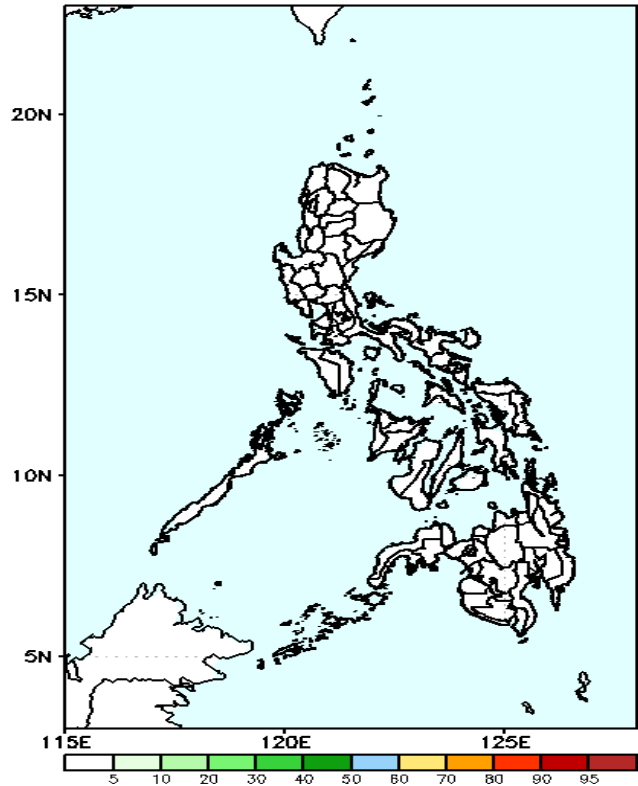
GEFS Week-1 Exceedance Prob. > 100mm  
Valid: 20240408 – 20240414



Probability to Exceed 100mm

- Low across the country.

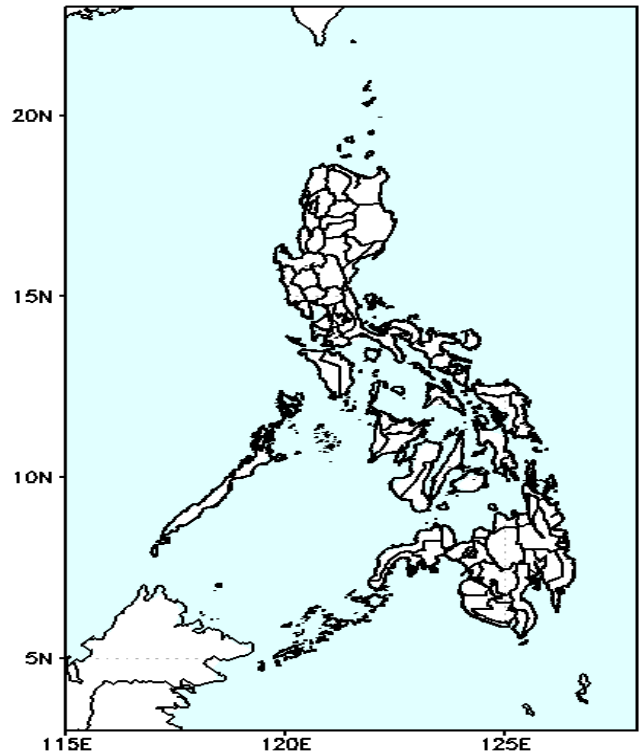
GEFS Week-1 Exceedance Prob. > 150mm  
Valid: 20240408 – 20240414



Probability to Exceed 150mm

- Low across the country.

GEFS Week-1 Exceedance Prob. > 200mm  
Valid: 20240408 – 20240414



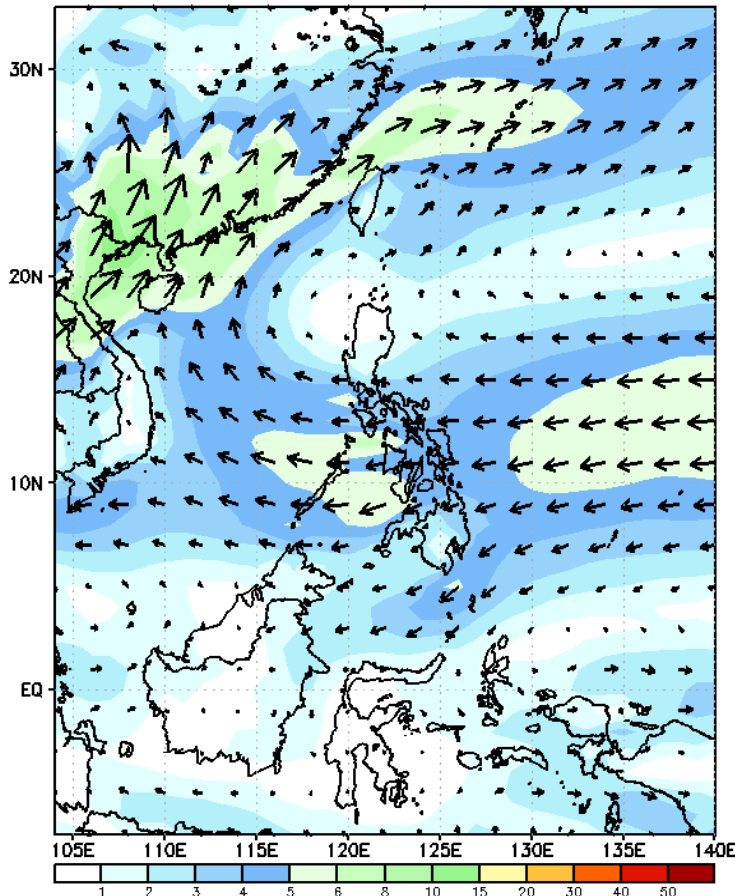
Probability to Exceed 200mm

- Low across the country.

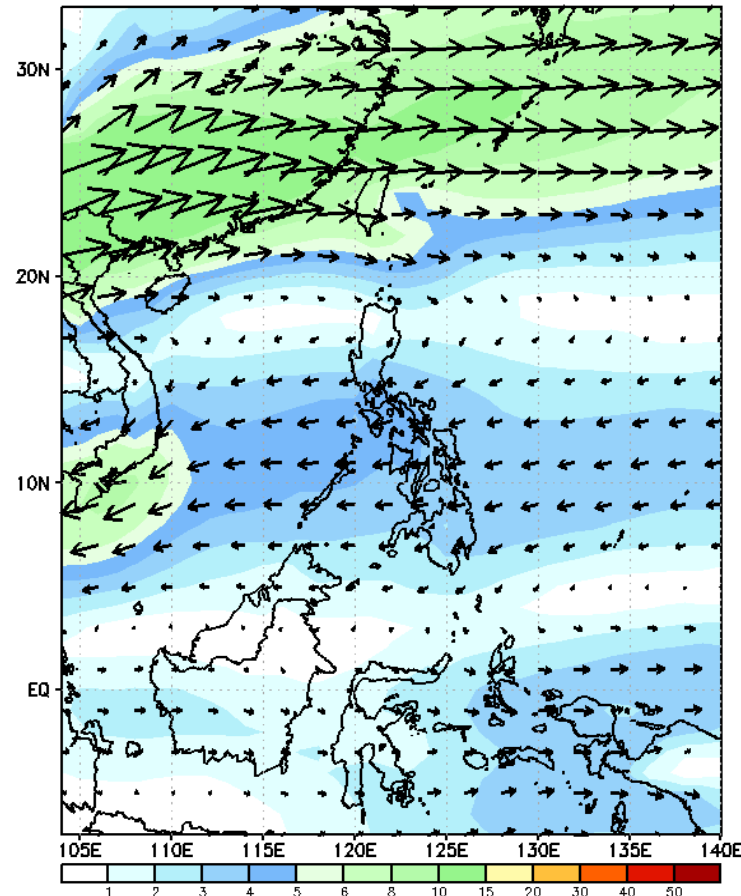
# GEFS Week-2 Wind Forecasts:

Week 2: Apr 15-21, 2024

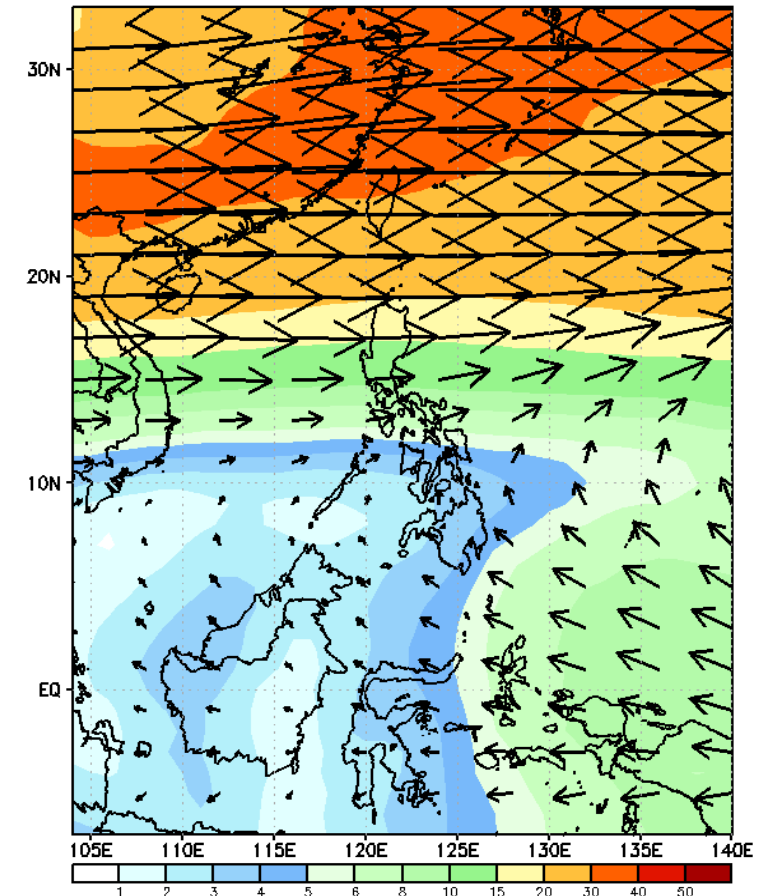
GEFS Week-2 850-hPa Wind Total  
Valid: 20240415 - 20240421



GEFS Week-2 700-hPa Wind Total  
Valid: 20240415 - 20240421

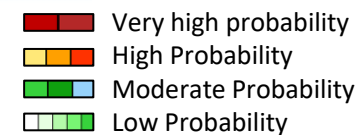


GEFS Week-2 200-hPa Wind Total  
Valid: 20240415 - 20240421



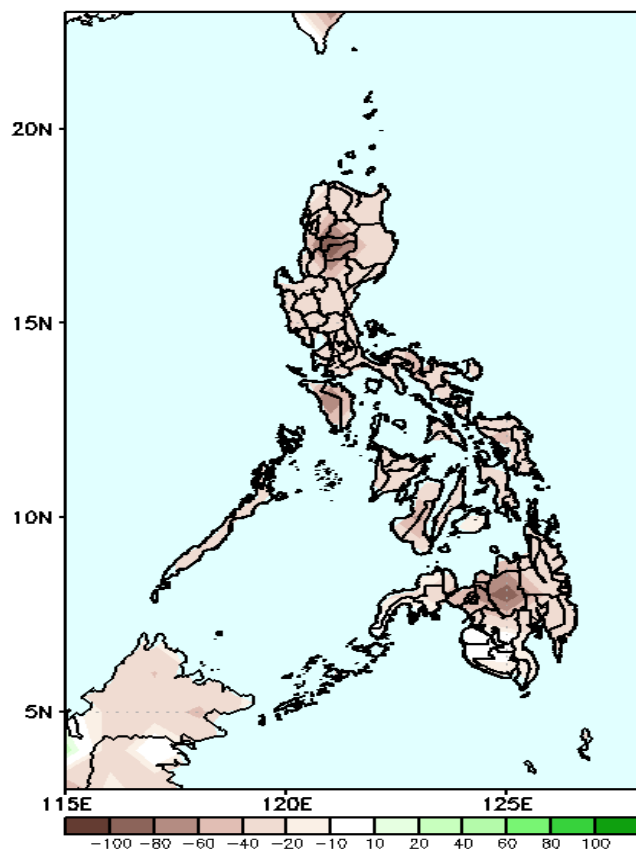
Easterlies will likely prevail in most parts of the country. Expect dry and warm days during the forecast period.

# Precipitation Anomaly and Exceedance Probability > 25/50 mm



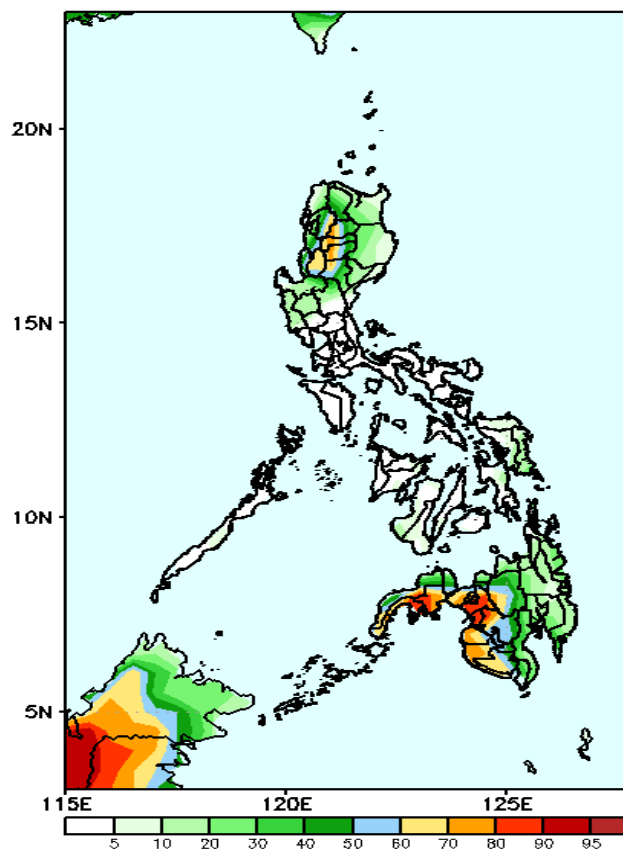
Week 2: Apr 15-21, 2024

GEFS Week-2 Precip Anomaly  
Valid: 20240415 - 20240421



Rainfall deficit of 20-80mm in most parts of the country.

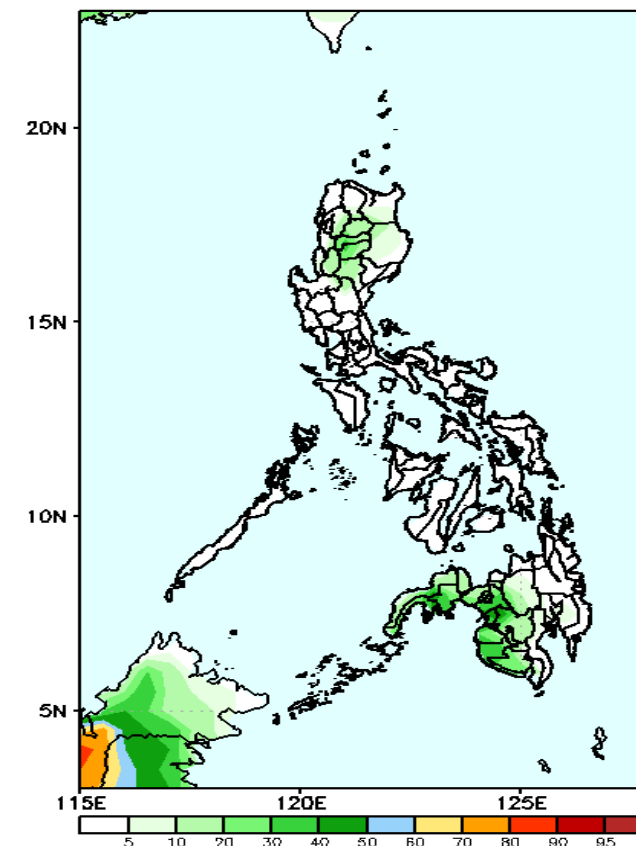
GEFS Week-2 Exceedance Prob. > 25mm  
Valid: 20240415 - 20240421



## Probability to Exceed 25mm

- Moderate to high over CAR, Western Mindanao and Zamboanga Peninsula;
- Low to moderate over the rest of Northern Luzon and Mindanao;
- Low over the rest of the country.

GEFS Week-2 Exceedance Prob. > 50mm  
Valid: 20240415 - 20240421



## Probability to Exceed 50mm

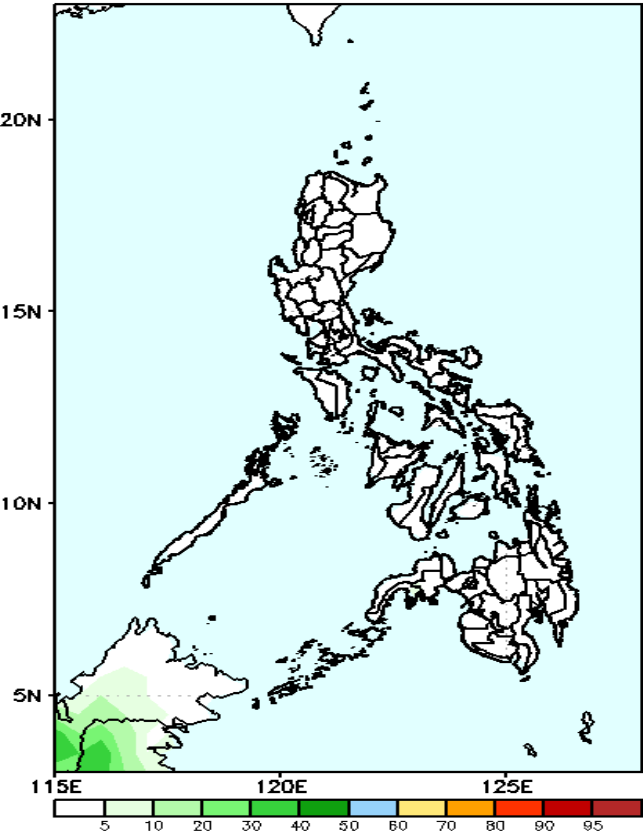
- Low across the country.

# Exceedance Probability > 100/150/200 mm

Week 2: Apr 15-21, 2024

- Very high probability
- High Probability
- Moderate Probability
- Low Probability

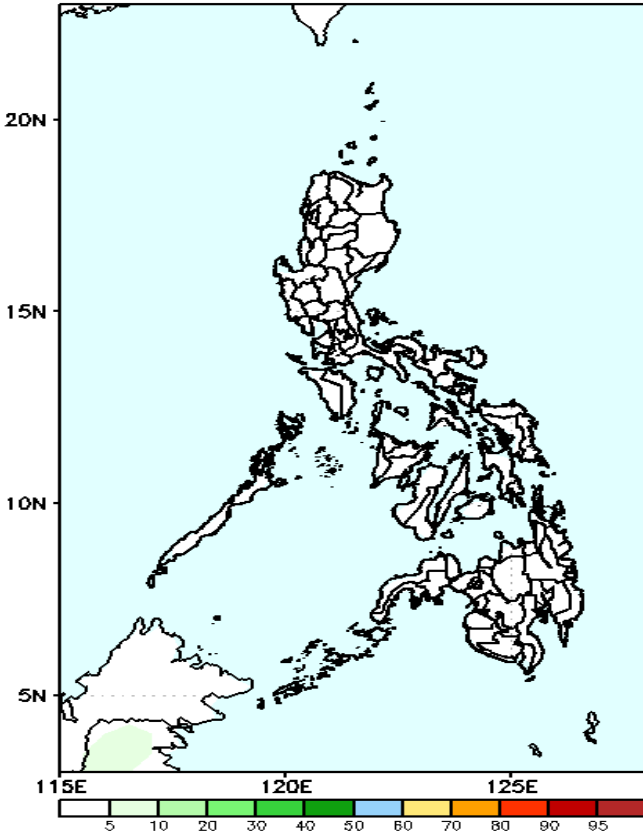
GEFS Week-2 Exceedance Prob. > 100mm  
Valid: 20240415 - 20240421



Probability to Exceed 100mm

- Low across the country.

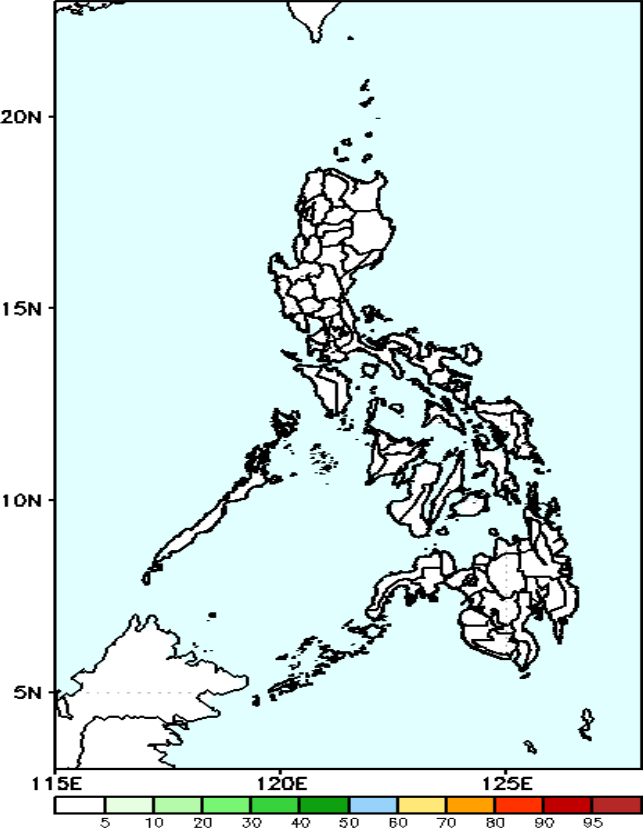
GEFS Week-2 Exceedance Prob. > 150mm  
Valid: 20240415 - 20240421



Probability to Exceed 150mm

- Low across the country.

GEFS Week-2 Exceedance Prob. > 200mm  
Valid: 20240415 - 20240421

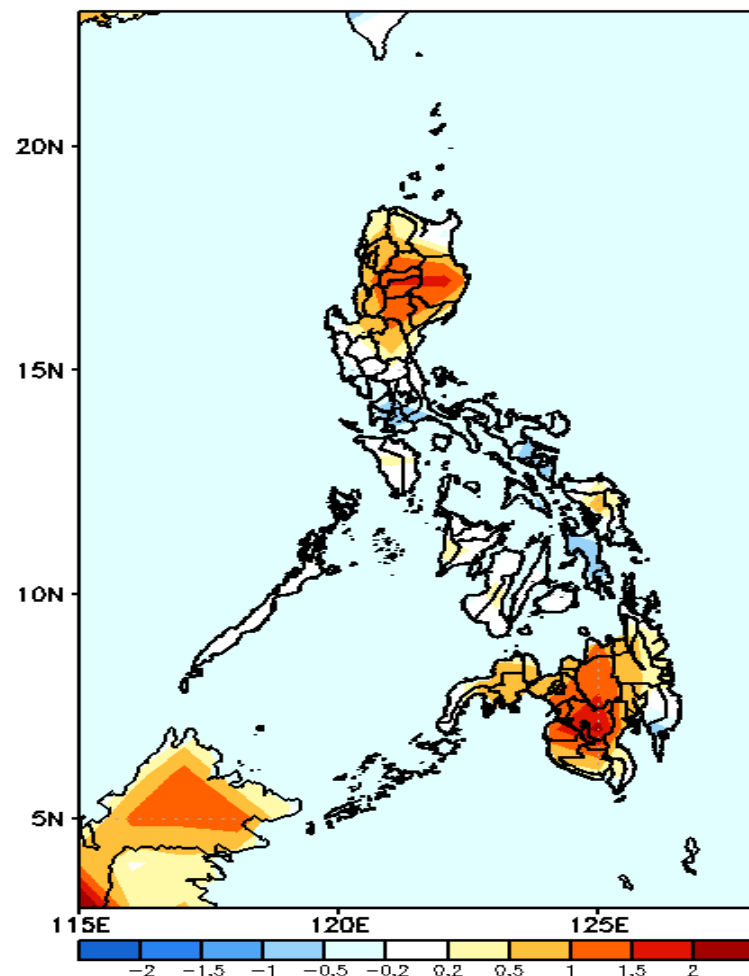


Probability to Exceed 200mm

- Low across the country.

# GEFS Week-1 & 2 Forecasts: T2m Anomaly

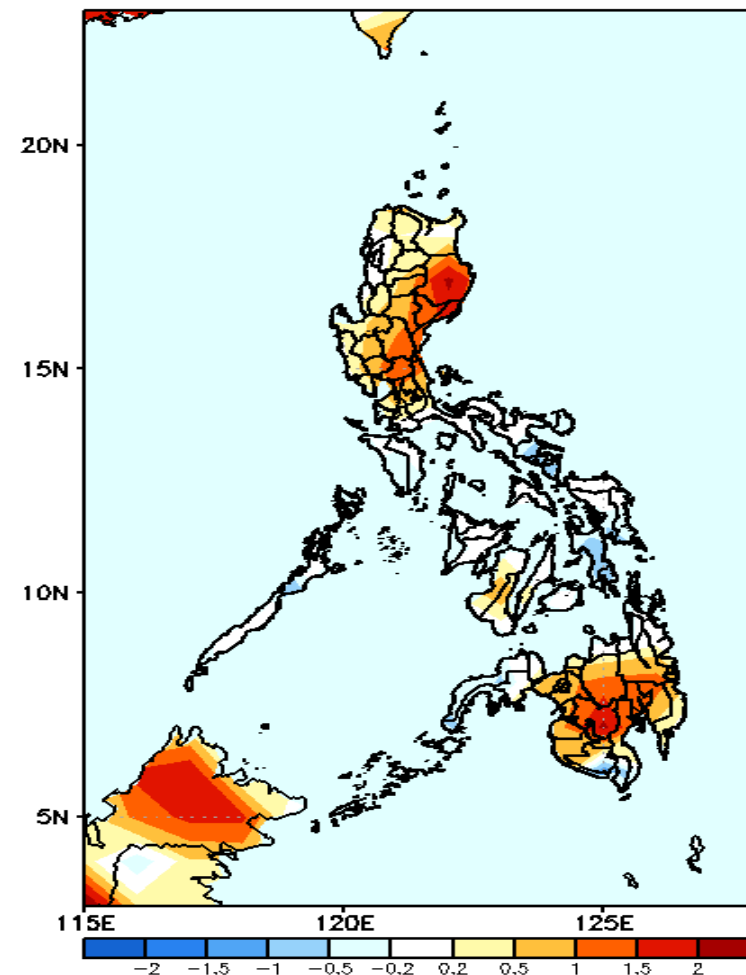
GEFS Week-1 T2m Anomaly  
Valid: 20240408 — 20240414



## 2m Temperature Week 1: April 08-14, 2024

Slightly warmer to warmer than average surface air temperature will likely be experienced in most parts of northern Luzon and Mindanao; Average to slightly cooler for the rest of Luzon, Visayas and eastern Mindanao.

GEFS Week-2 T2m Anomaly  
Valid: 20240415 — 20240421



## 2m Temperature Week 2: Apr 15-21, 2024

Slightly warmer to warmer than average surface air temperature will likely be experienced in most parts of eastern and central Luzon and Mindanao while near to slightly cooler for the rest of Luzon, Visayas, Zamboanga Peninsula and Caraga Region.