



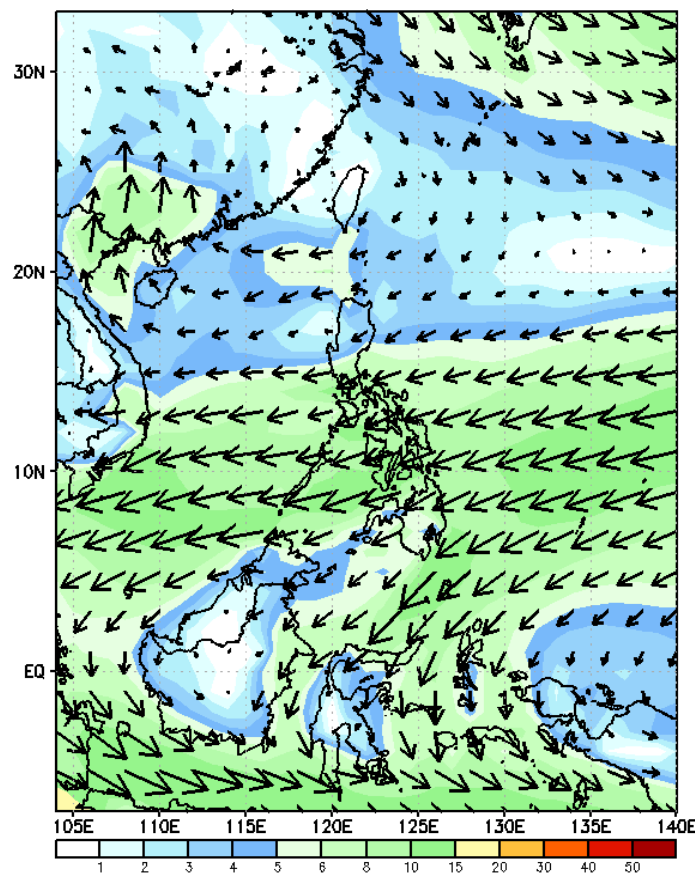
Week 1 & Week 2 Forecast for the Philippines using GEFS Model



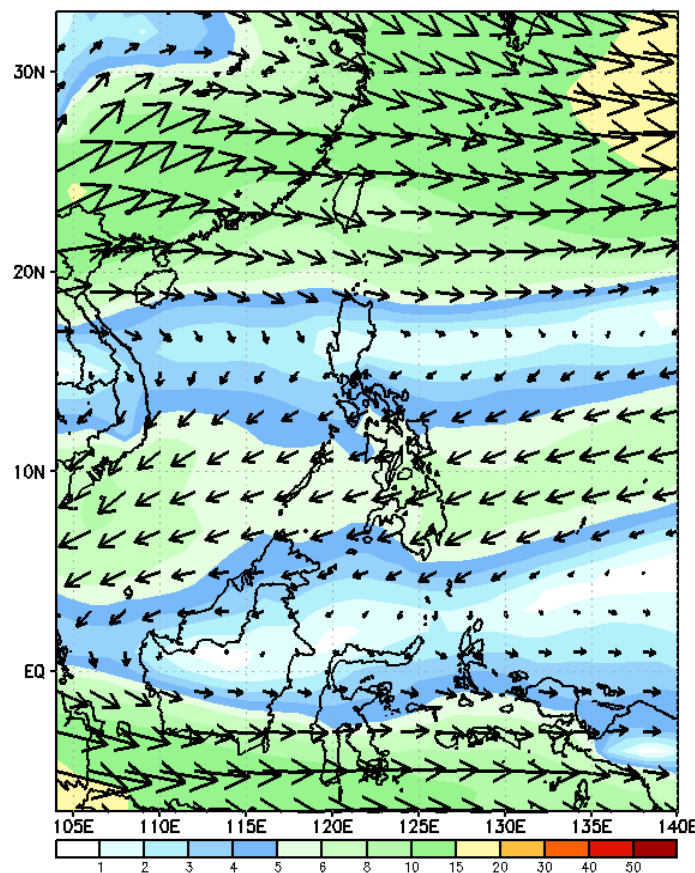
GEFS Week-1 Forecasts: Wind Forecast

Week 1: Mar 08-14, 2024

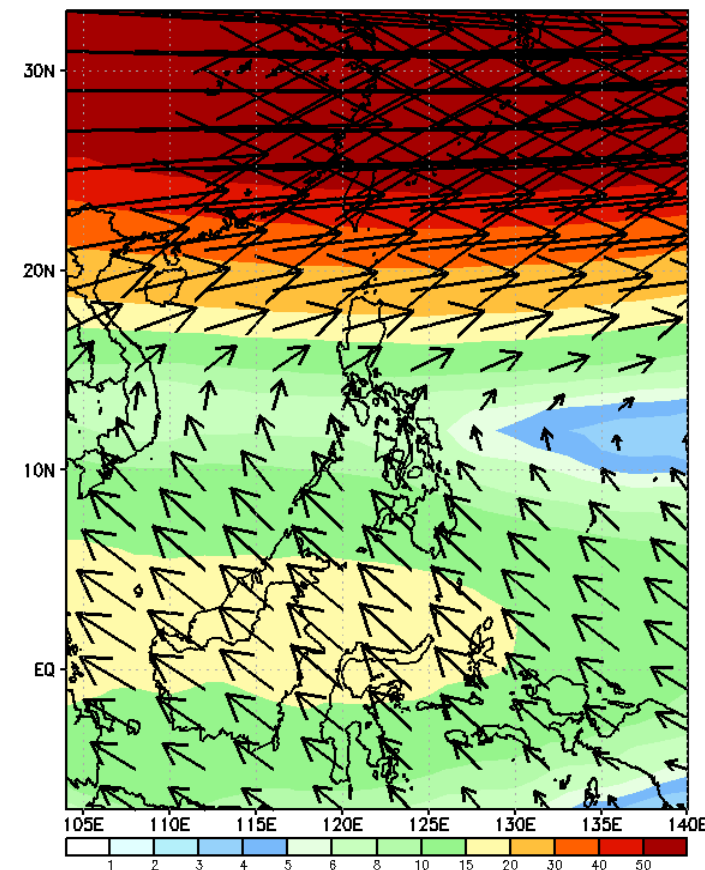
GEFS Week-1 850-hPa Wind Total
Valid: 20240308 - 20240314



GEFS Week-1 700-hPa Wind Total
Valid: 20240308 - 20240314

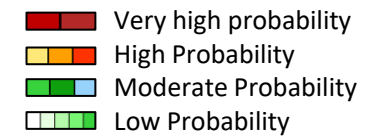


GEFS Week-1 200-hPa Wind Total
Valid: 20240308 - 20240314



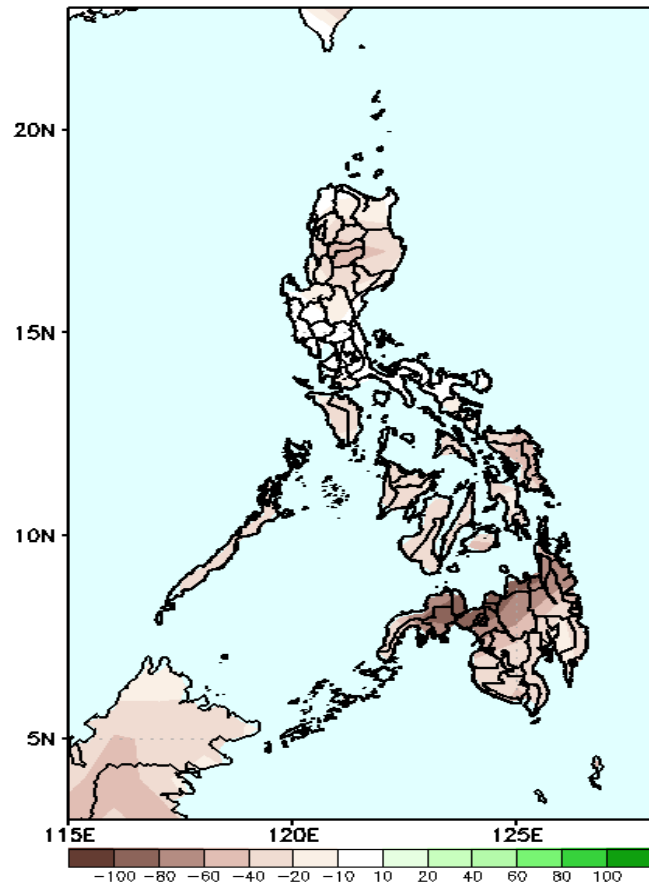
Surges of Northeast Monsoon will likely affect Northern Luzon and Easterlies over the rest of the country.

Precipitation Anomaly and Exceedance Probability > 25/50 mm



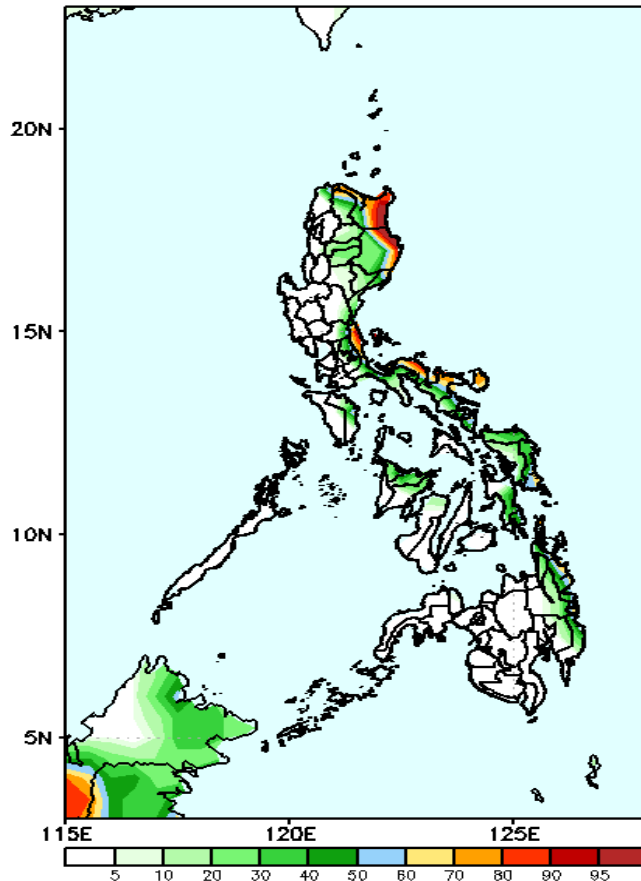
Week 1: Mar 08-14, 2024

GEFS Week-1 Precip Anomaly
Valid: 20240308 - 20240314



Rainfall deficit of 40-100mm over most parts of the country.

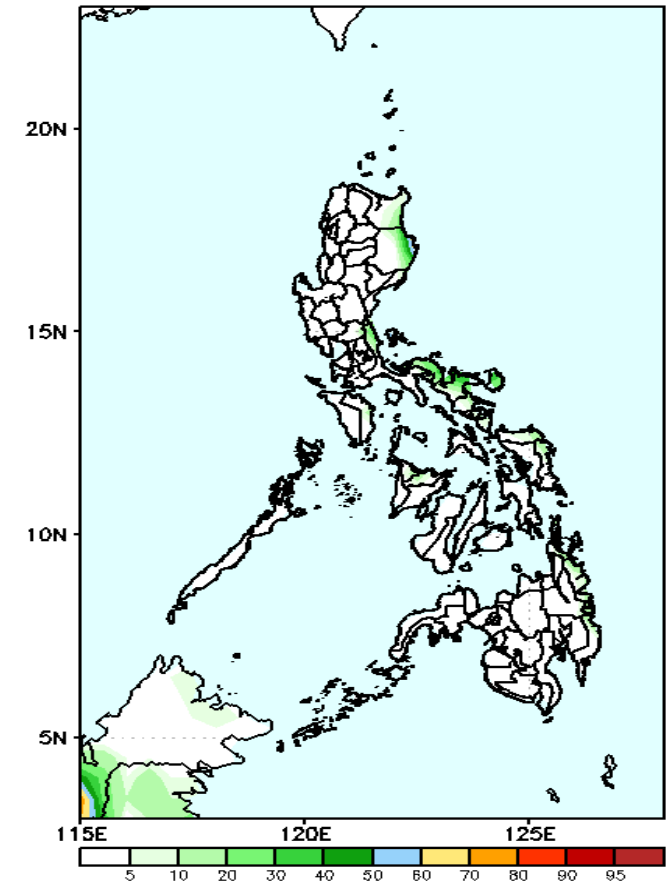
GEFS Week-1 Exceedance Prob. > 25mm
Valid: 20240308 - 20240314



Probability to Exceed 25mm

- Moderate to high over the northeast part of Cagayan Valley and Quezon, Bicol Region, Eastern Samar, and Surigao provinces;
- Low to moderate over the rest of the eastern sections of the country;
- Low over the rest of the country.

GEFS Week-1 Exceedance Prob. > 50mm
Valid: 20240308 - 20240314



Probability to Exceed 50mm

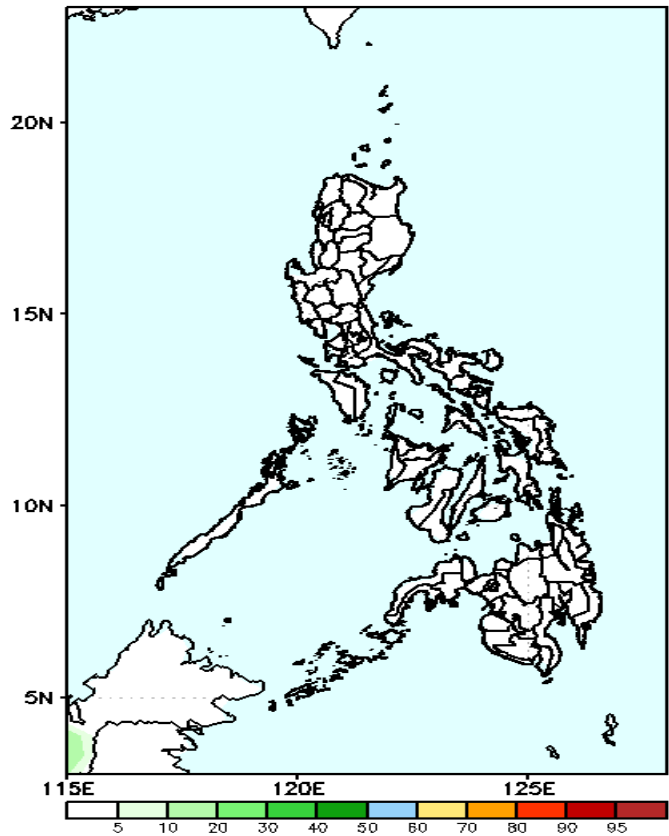
- Low across the country.

Exceedance Probability > 100/150/200 mm

Week 1: Mar 08-14, 2024

- Very high probability
- High Probability
- Moderate Probability
- Low Probability

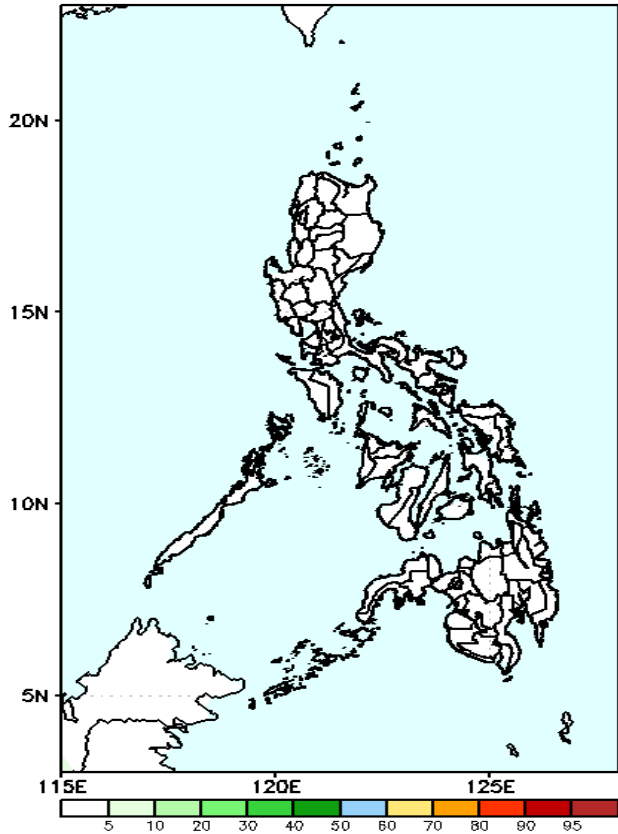
GEFS Week-1 Exceedance Prob. > 100mm
Valid: 20240308 – 20240314



Probability to Exceed 100mm

- Low across the country.

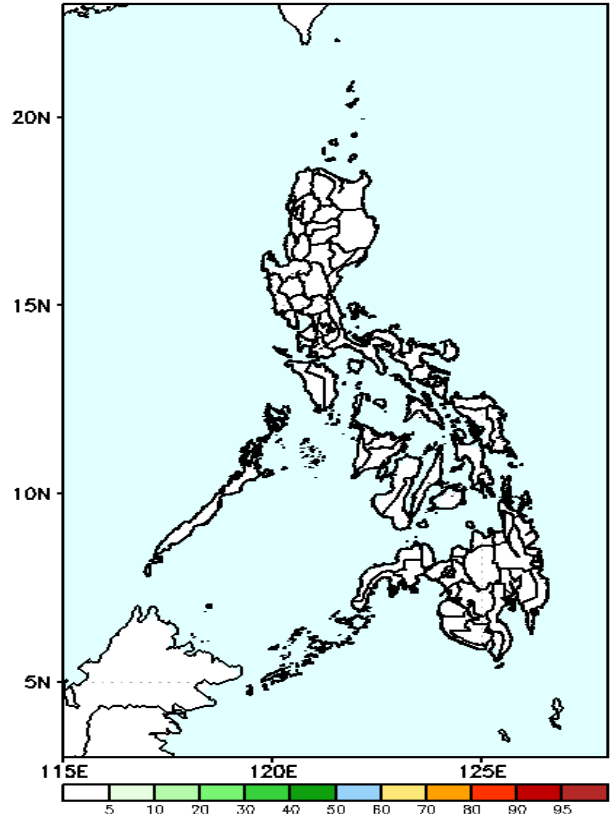
GEFS Week-1 Exceedance Prob. > 150mm
Valid: 20240308 – 20240314



Probability to Exceed 150mm

- Low across the country.

GEFS Week-1 Exceedance Prob. > 200mm
Valid: 20240308 – 20240314



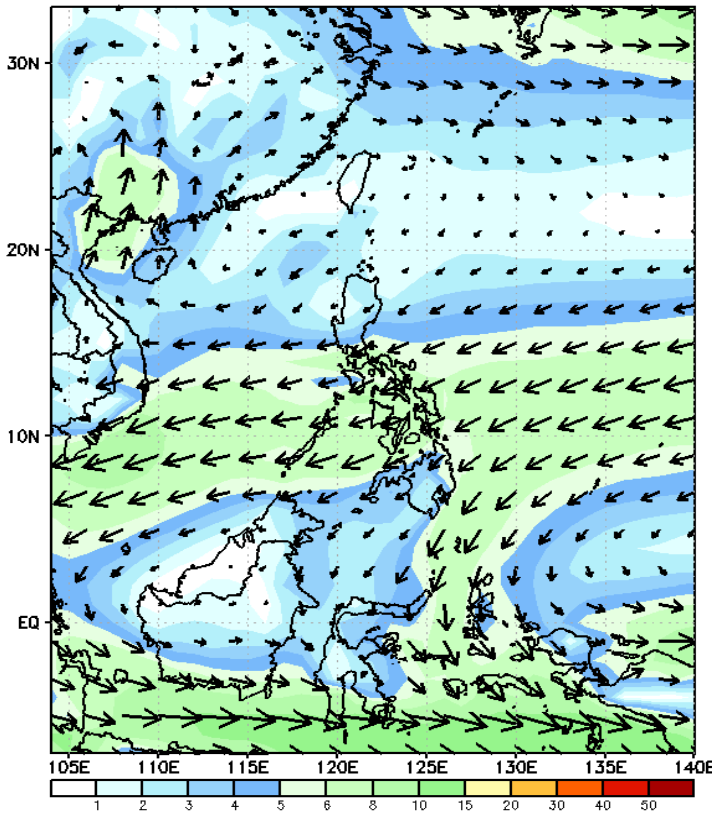
Probability to Exceed 200mm

- Low across the country.

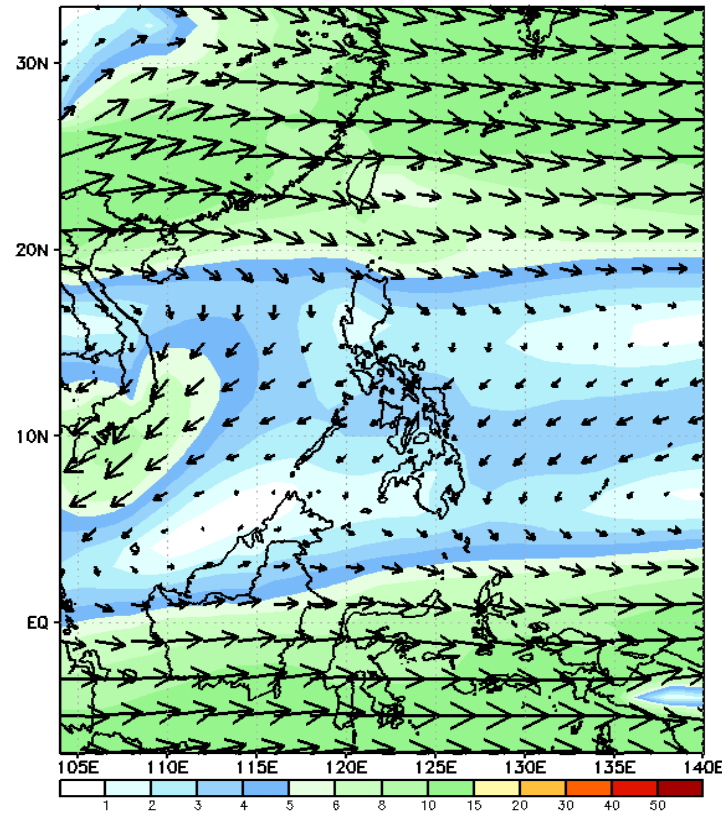
GEFS Week-2 Forecasts: Wind Forecast

Week 2: Mar 15-21, 2024

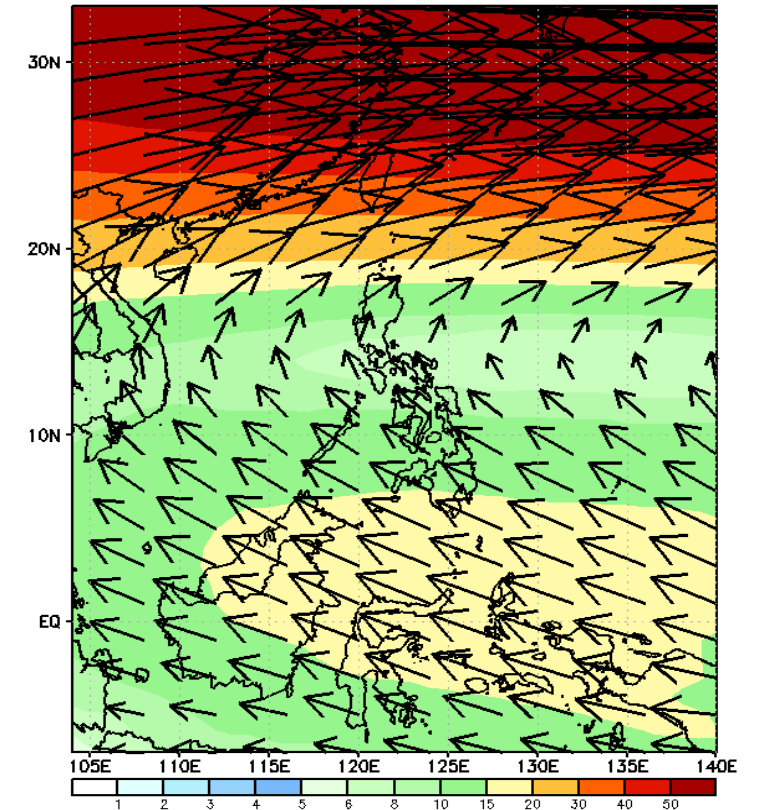
GEFS Week-2 850-hPa Wind Total
Valid: 20240315 - 20240321



GEFS Week-2 700-hPa Wind Total
Valid: 20240315 - 20240321



GEFS Week-2 200-hPa Wind Total
Valid: 20240315 - 20240321



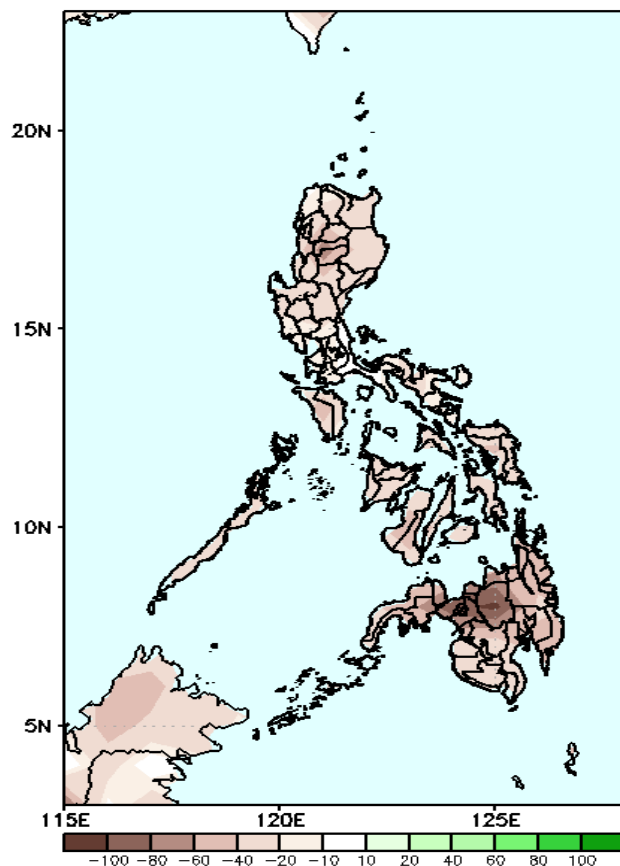
Surges of Northeast Monsoon will likely affect Extreme Northern Luzon and Easterlies over the rest of the country.

Precipitation Anomaly and Exceedance Probability > 25/50 mm



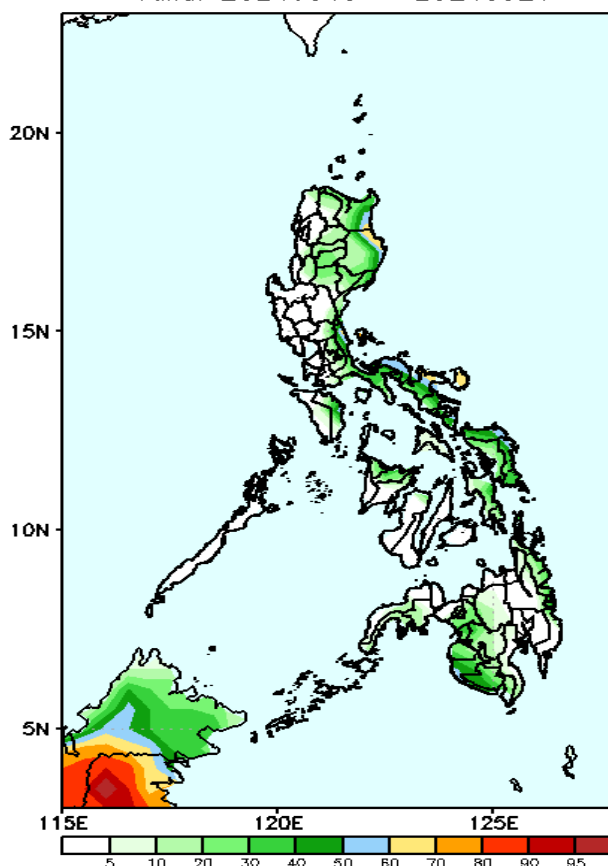
Week 2: Mar 15-21, 2024

GEFS Week-2 Precip Anomaly
Valid: 20240315 - 20240321



Rainfall deficit of 40-100mm over most parts of the country.

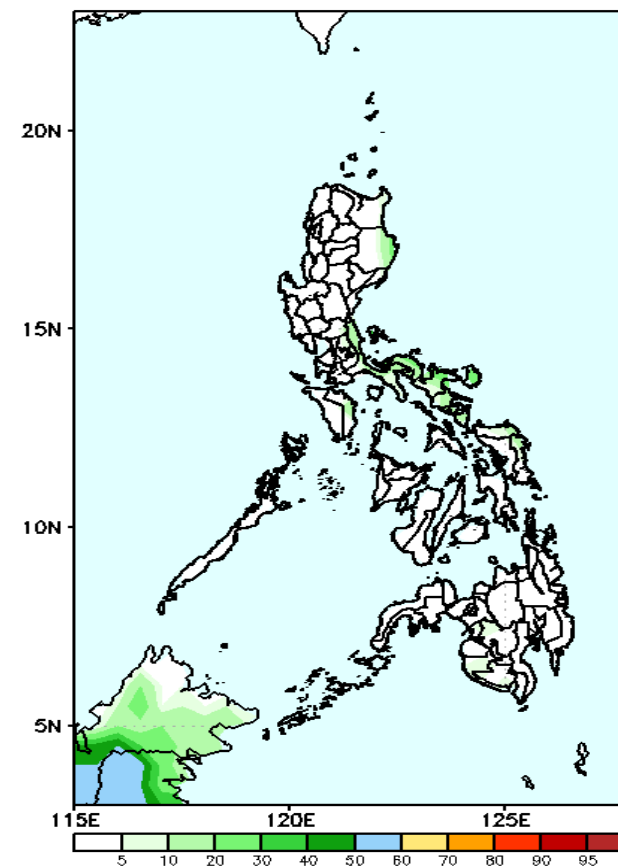
GEFS Week-2 Exceedance Prob. > 25mm
Valid: 20240315 - 20240321



Probability to Exceed 25mm

- Moderate to high over the eastern portions of Cagayan Isabela, Quezon, and Bicol region;
- Low to moderate over the rest of eastern Luzon and Visayas;
- Low over the rest of the country.

GEFS Week-2 Exceedance Prob. > 50mm
Valid: 20240315 - 20240321



Probability to Exceed 50mm

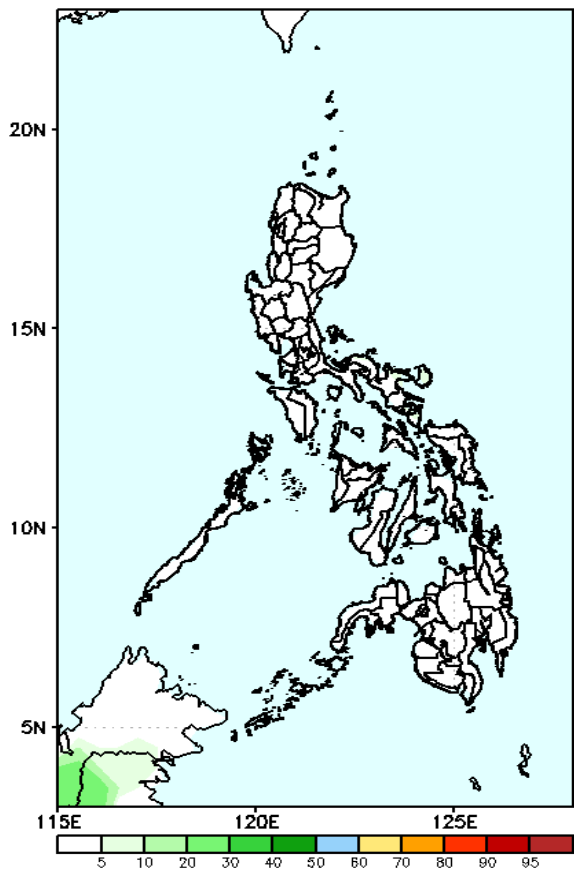
- Low across the country.

Exceedance Probability > 100/150/200 mm

Week 2: Mar 15-21, 2024

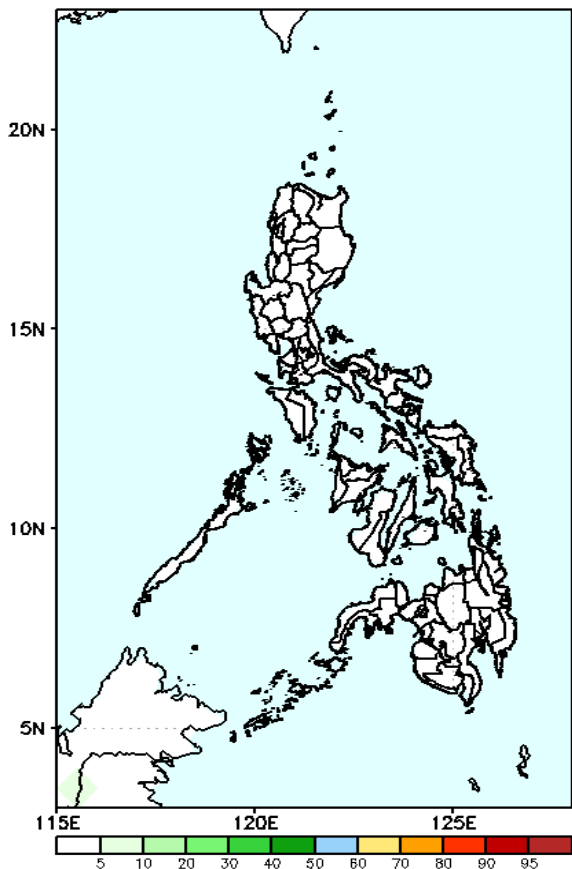
- Very high probability
- High Probability
- Moderate Probability
- Low Probability

GEFS Week-2 Exceedance Prob. > 100mm
Valid: 20240315 – 20240321



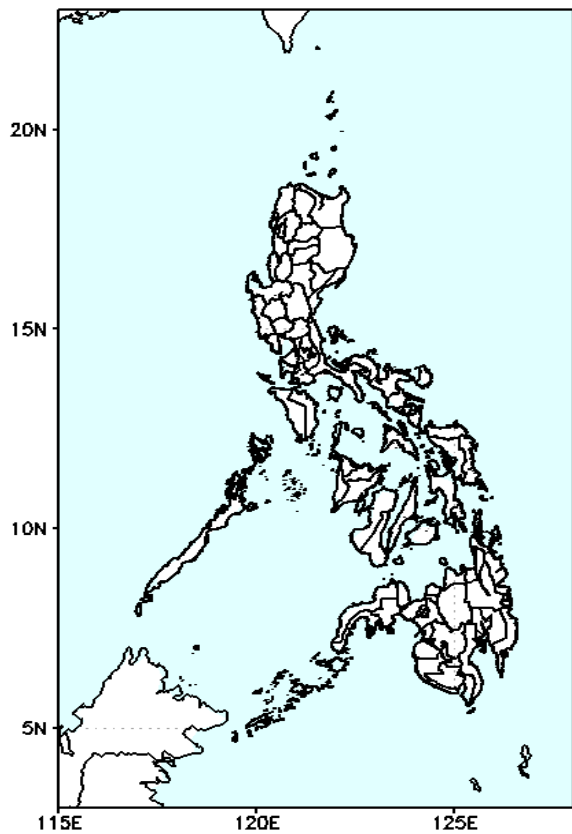
Probability to Exceed 100mm
• Low across the country.

GEFS Week-2 Exceedance Prob. > 150mm
Valid: 20240315 – 20240321



Probability to Exceed 150mm
• Low across the country.

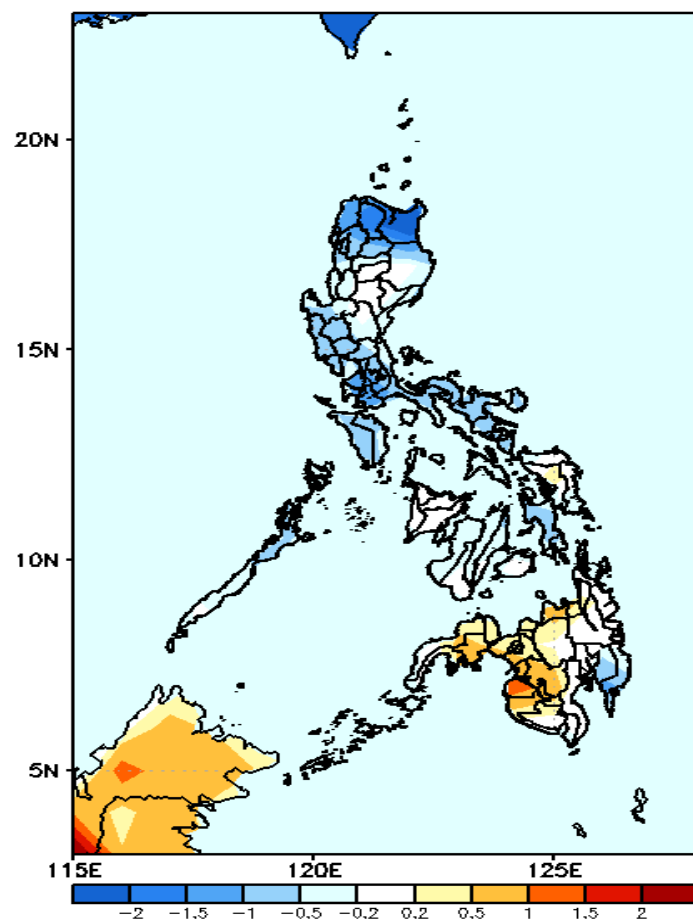
GEFS Week-2 Exceedance Prob. > 200mm
Valid: 20240315 – 20240321



Probability to Exceed 200mm
• Low across the country.

GEFS Week-1 & 2 Forecasts: T2m Anomaly

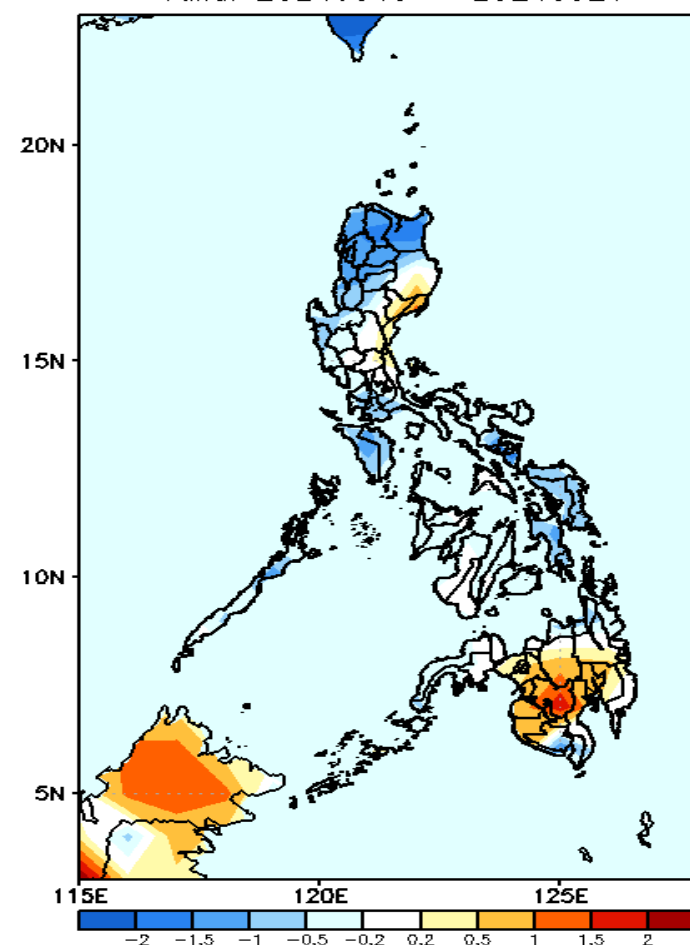
GEFS Week-1 T2m Anomaly
Valid: 20240308 – 20240314



2m Temperature Week 1: Mar 08-14, 2024

Average to cooler than average surface air temperature will likely be experienced in most parts of Luzon, Visayas and Davao Region while average to warmer than average surface air temperature is expected in most parts of Mindanao.

GEFS Week-2 T2m Anomaly
Valid: 20240315 – 20240321



2m Temperature Week 2: Mar 15-21, 2024

Average to cooler than average surface air temperature will likely be experienced in most parts of Luzon and Visayas while average to warmer than average surface air temperature is expected in Baler and most parts of Mindanao.