



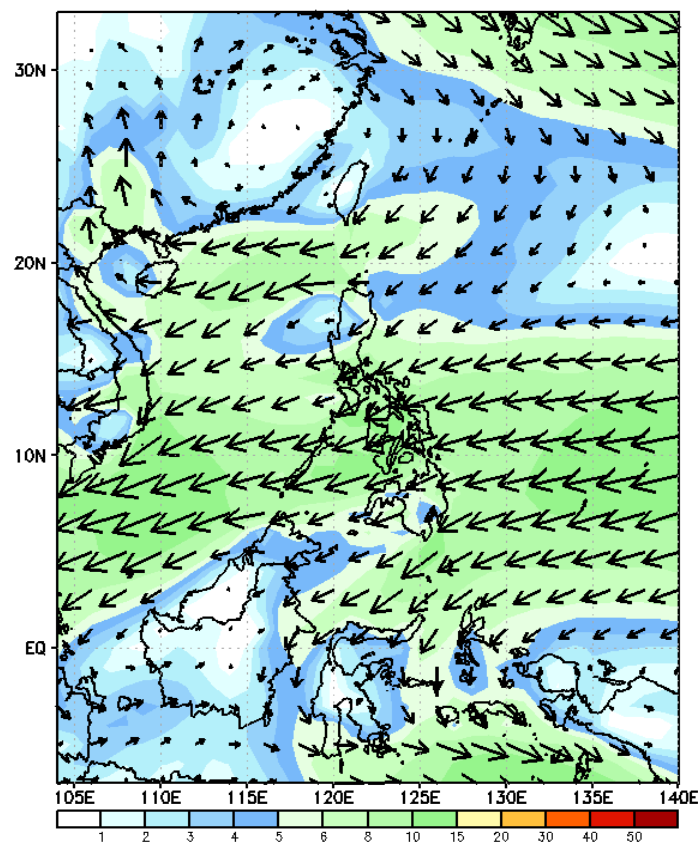
Week 1 & Week 2 Forecast for the Philippines using GEFS Model



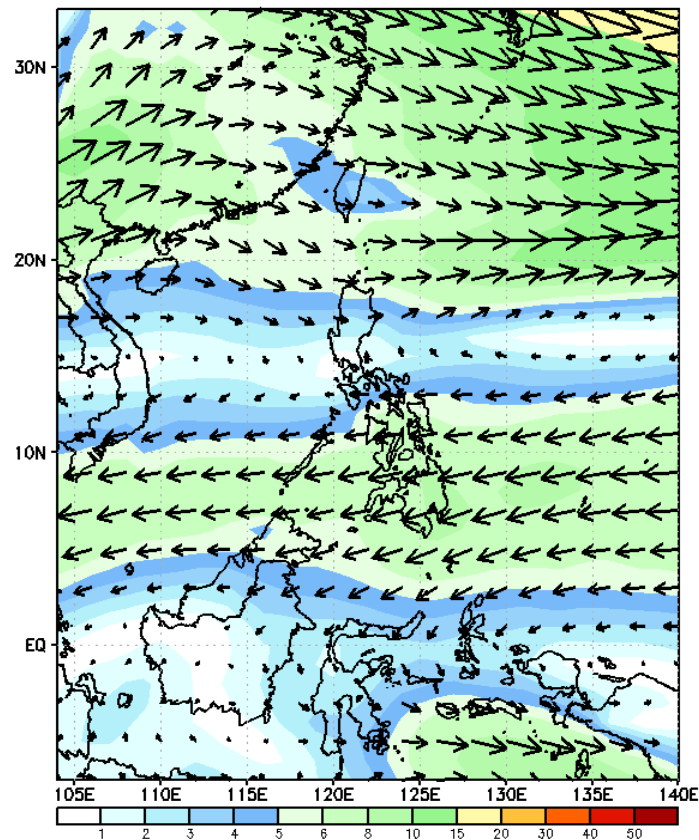
GEFS Week-1 Forecasts: Wind Forecast

Week 1: January 08-14, 2024

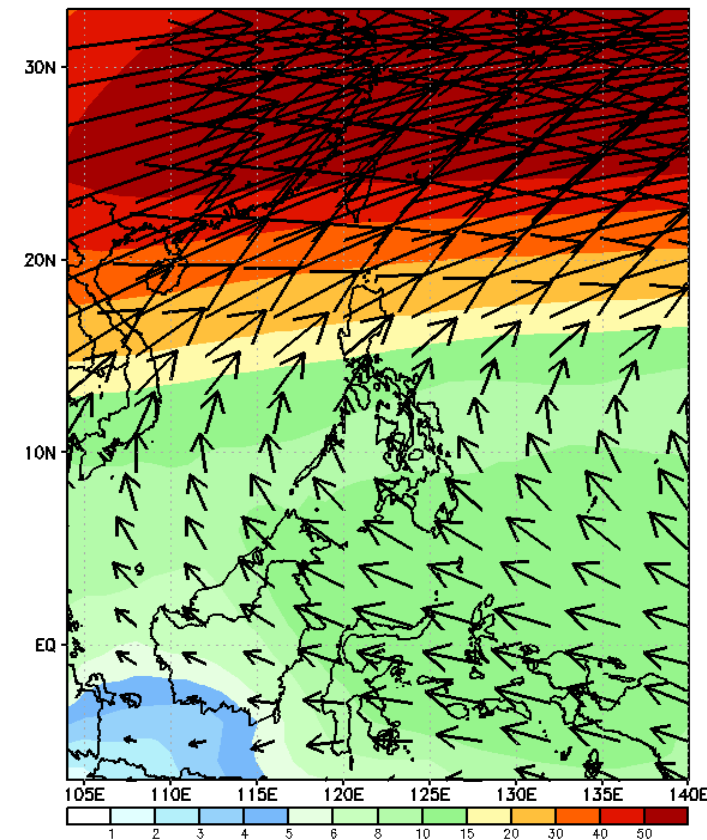
GEFS Week-1 850-hPa Wind Total
Valid: 20240110 - 20240116



GEFS Week-1 700-hPa Wind Total
Valid: 20240110 - 20240116

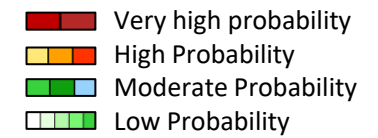


GEFS Week-1 200-hPa Wind Total
Valid: 20240110 - 20240116



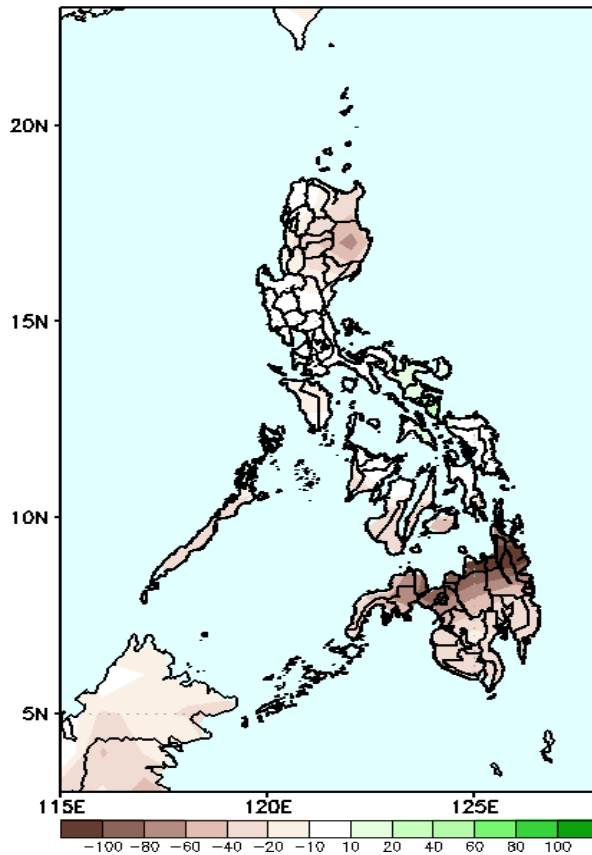
Northeast Monsoon affecting Northern and Central Luzon; Easterlies affecting the rest of the country

Precipitation Anomaly and Exceedance Probability > 25/50 mm



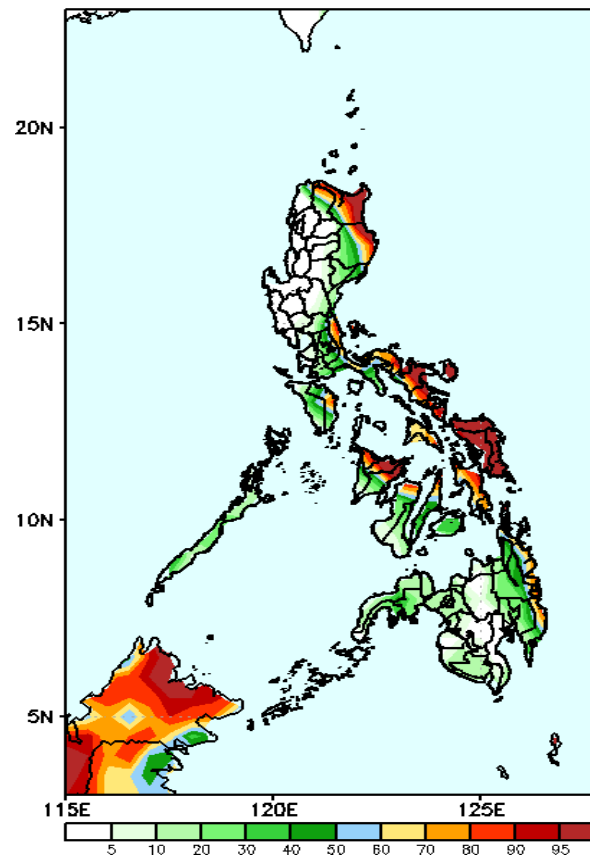
Week 1: January 08-14, 2024

GEFS Week-1 Precip Anomaly
Valid: 20240110 - 20240116



Rainfall deficit of 40-60mm in most parts of the country. Moreover, a deficit of 80-100mm is forecasted in Northern Mindanao.

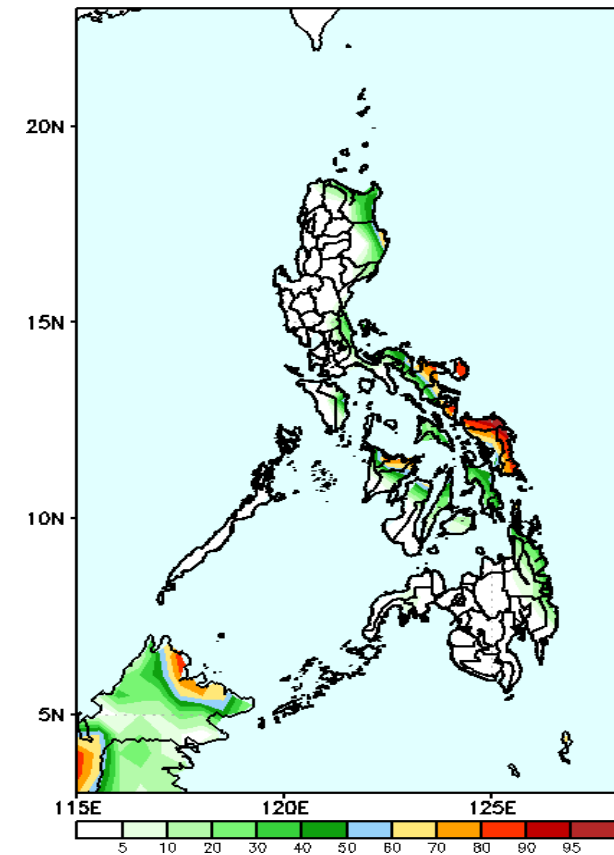
GEFS Week-1 Exceedance Prob. > 25mm
Valid: 20240110 - 20240116



Probability to Exceed 25mm

- High to very high over the eastern portion of Isabela, most of Cagayan, Bicol Region, Eastern Visayas and northern portion of Western Visayas;
- Moderate to high over Apayao, Quezon, Cebu, Surigao provinces and Davao Oriental;
- Low to moderate over the rest of the country.

GEFS Week-1 Exceedance Prob. > 50mm
Valid: 20240110 - 20240116

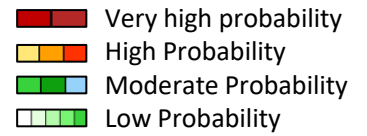


Probability to Exceed 50mm

- Moderate to high over the eastern portion of Isabela, most of Bicol Region, Eastern Visayas, Aklan, and Capiz;
- Low to moderate over Cagayan and Surigao provinces;
- Low over the rest of the country.

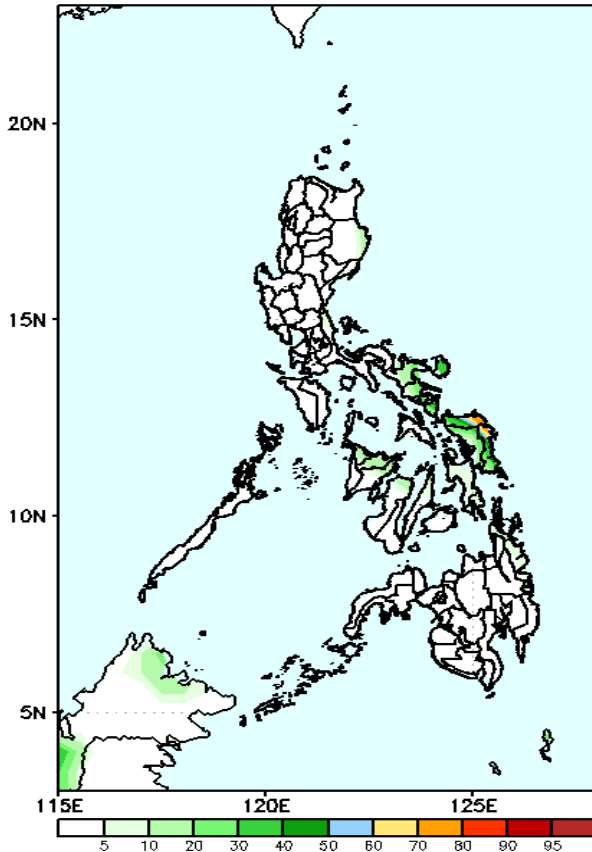


Exceedance Probability > 100/150/200 mm



Week 1: January 08-14, 2024

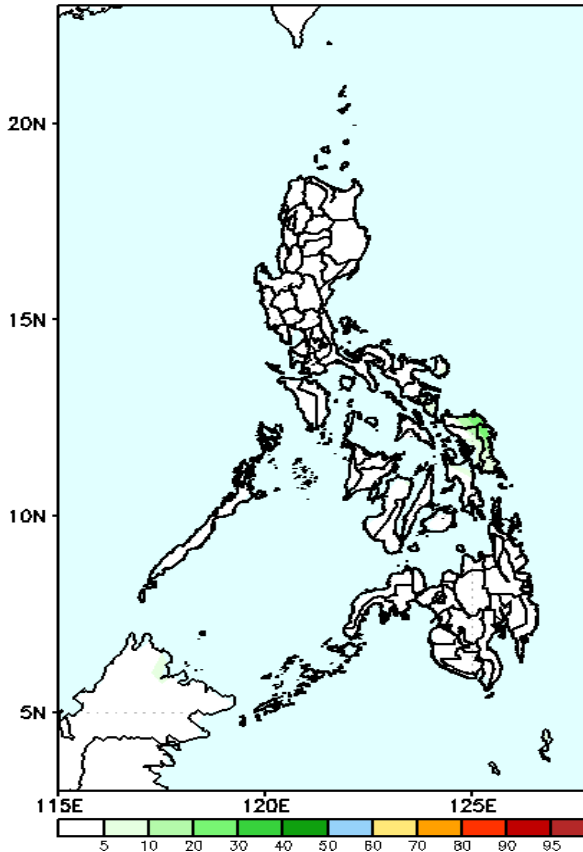
GEFS Week-1 Exceedance Prob. > 100mm
Valid: 20240110 - 20240116



Probability to Exceed 100mm

- Moderate to high over Northern and Eastern Samar;
- Low across the country.

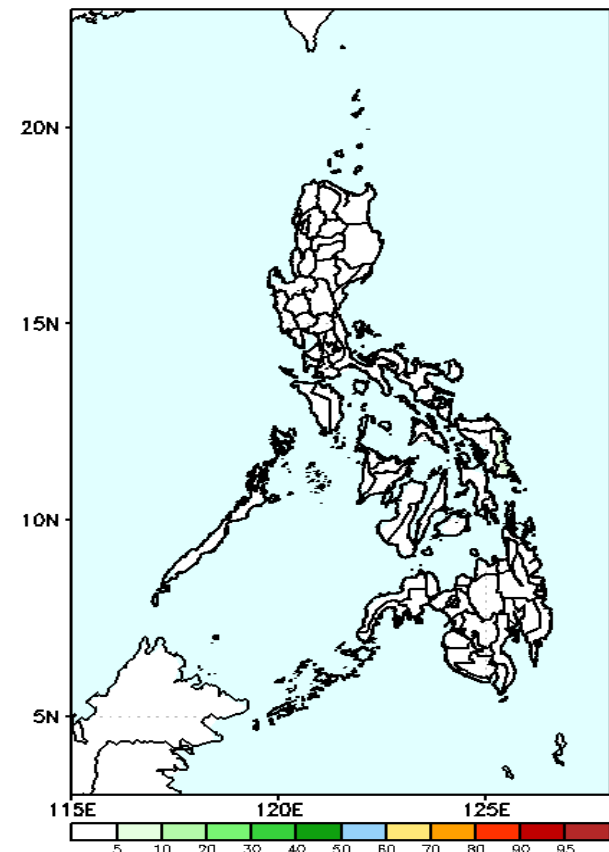
GEFS Week-1 Exceedance Prob. > 150mm
Valid: 20240110 - 20240116



Probability to Exceed 150mm

- Low across the country.

GEFS Week-1 Exceedance Prob. > 200mm
Valid: 20240110 - 20240116



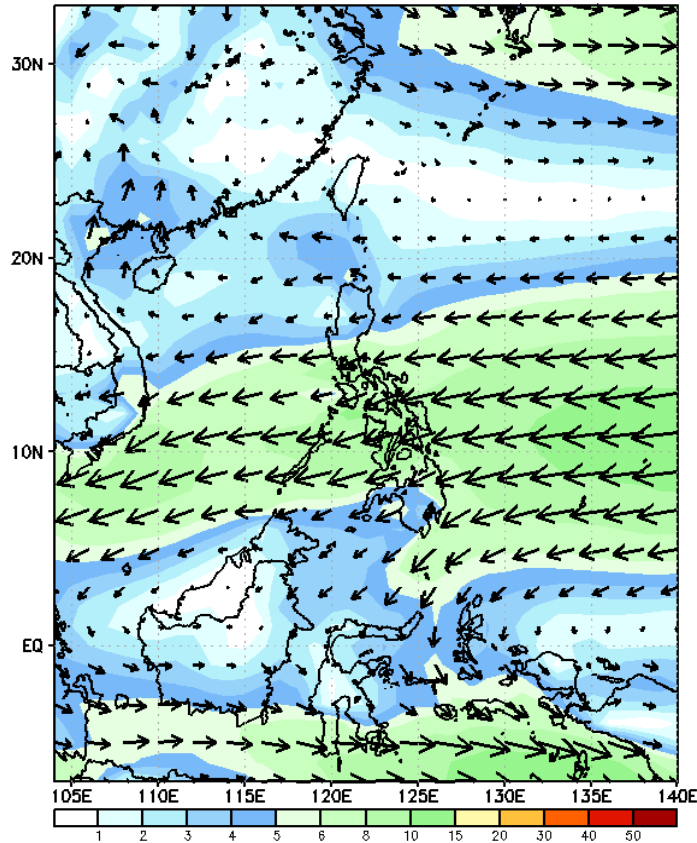
Probability to Exceed 200mm

- Low across the country.

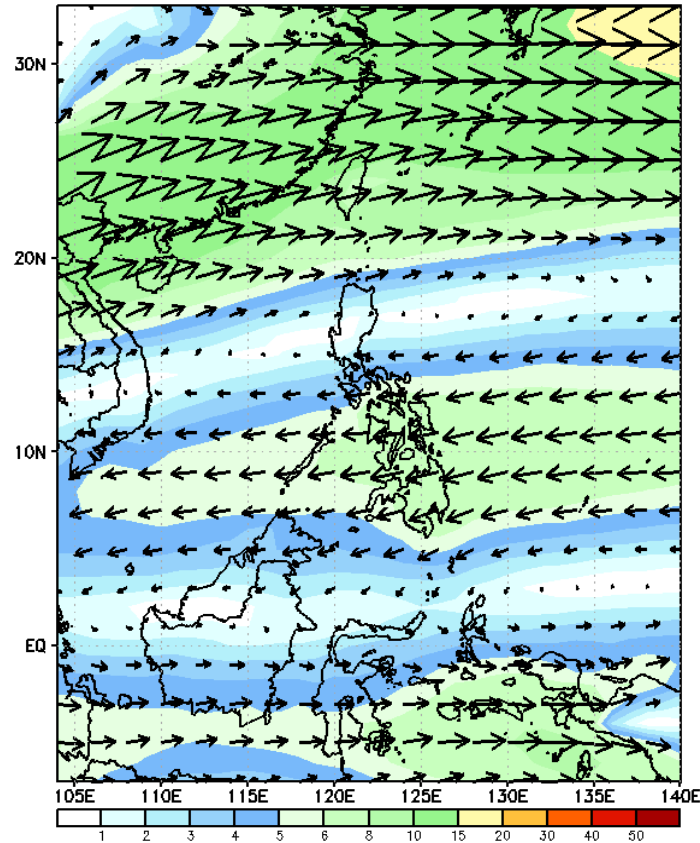
GEFS Week-2 Forecasts: Wind Forecast

Week 2: January 12-18, 2024

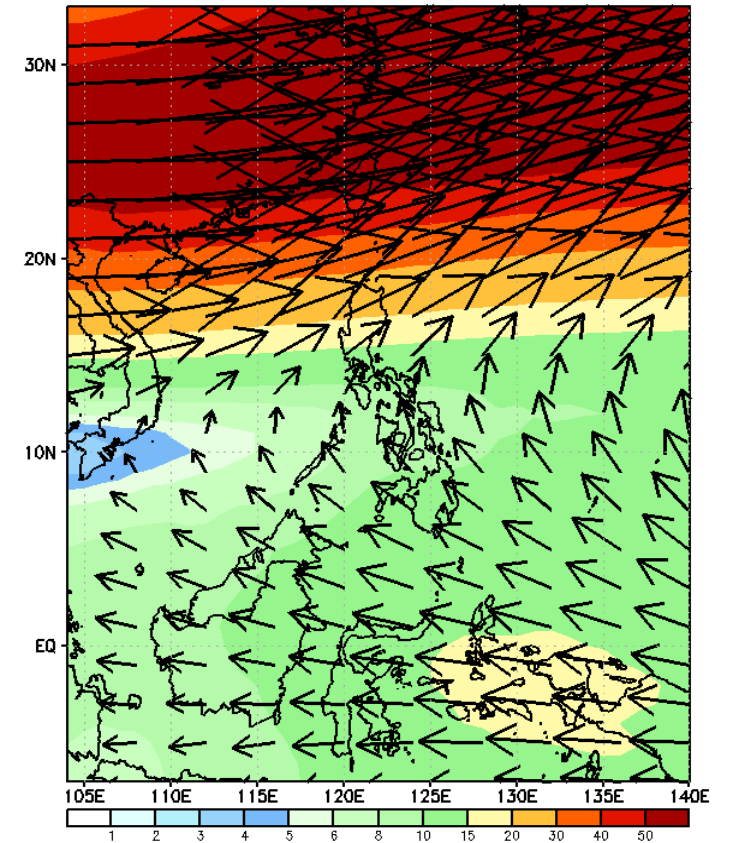
GEFS Week-2 850-hPa Wind Total
Valid: 20240117 - 20240123



GEFS Week-2 700-hPa Wind Total
Valid: 20240117 - 20240123

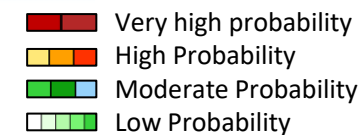


GEFS Week-2 200-hPa Wind Total
Valid: 20240117 - 20240123

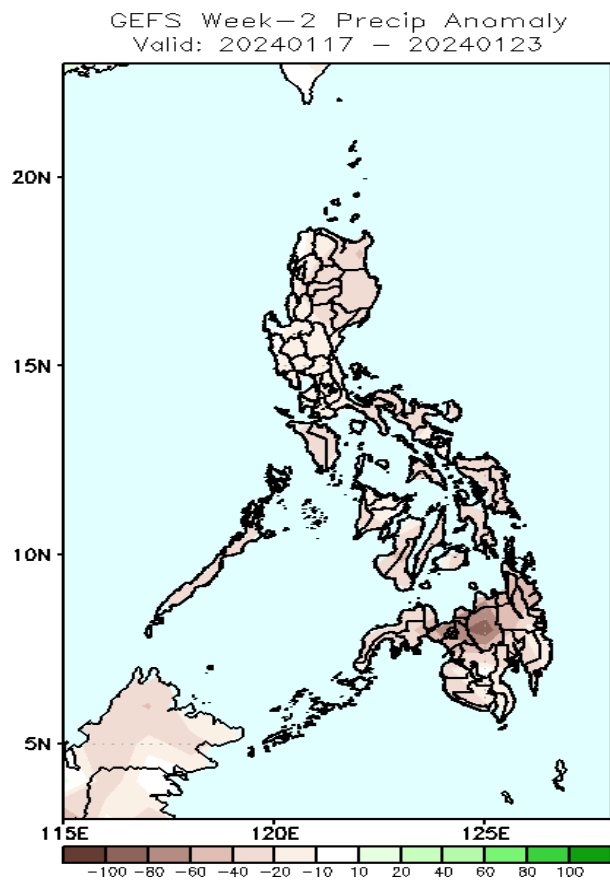


Easterlies affecting most parts of the country.

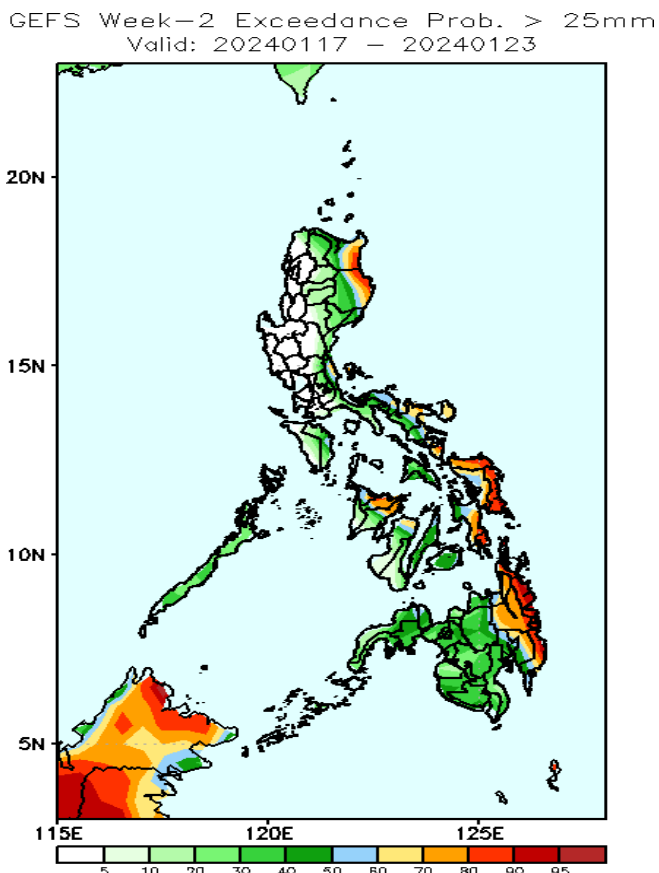
Precipitation Anomaly and Exceedance Probability > 25/50 mm



Week 2: January 15-21, 2024

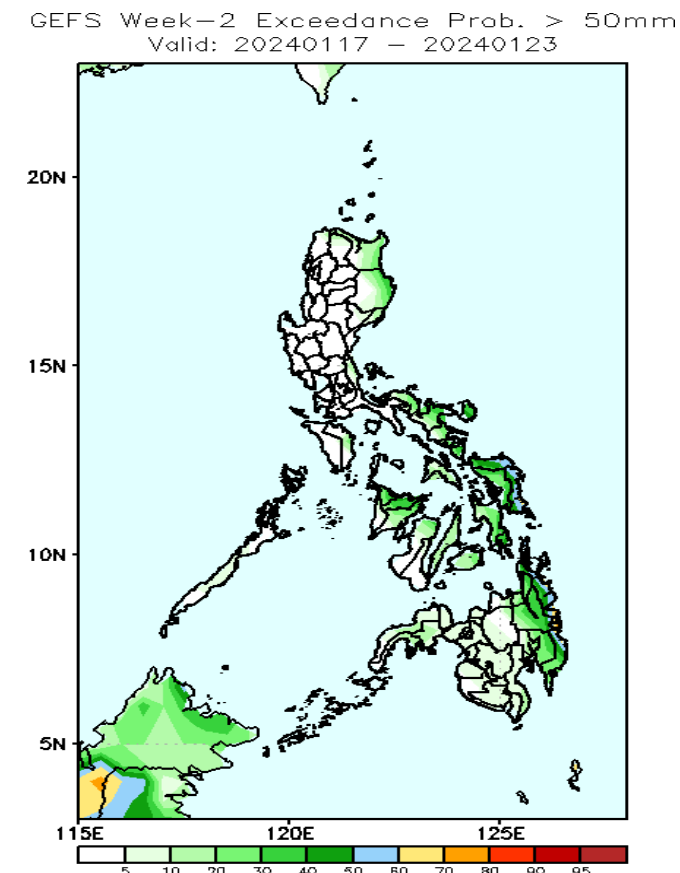


Rainfall deficit of 20-60mm in most parts of the country.



Probability to Exceed 25mm

- Moderate to high over Cagayan and Isabela, Bicol Region, Eastern Visayas, northern portion of Western Visayas and most of Eastern Mindanao;
- Low to moderate over the rest of the country.



Probability to Exceed 50mm

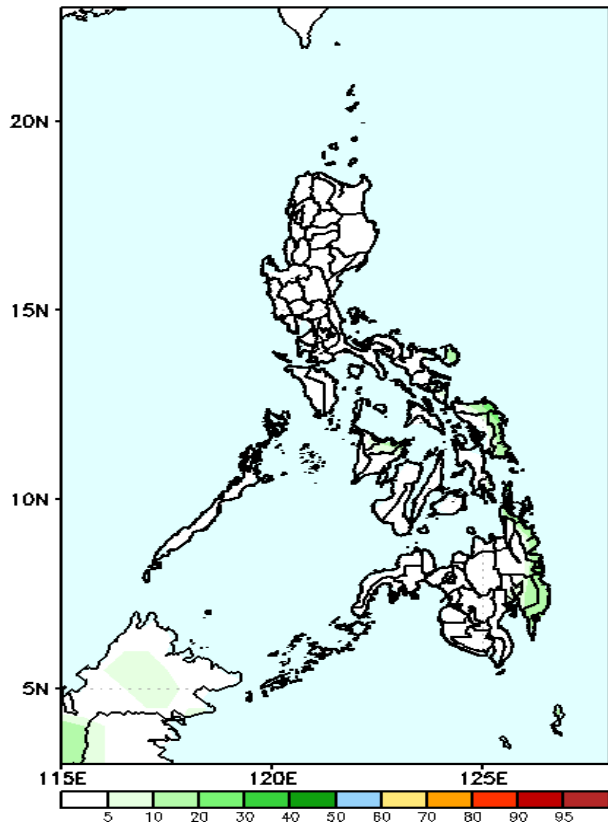
- Moderate to high over Surigao provinces;
- Low to moderate over Northern and Eastern Samar;
- Low over the rest of the country.

Exceedance Probability > 100/150/200 mm

Week 2: January 15-21, 2024

- Very high probability
- High Probability
- Moderate Probability
- Low Probability

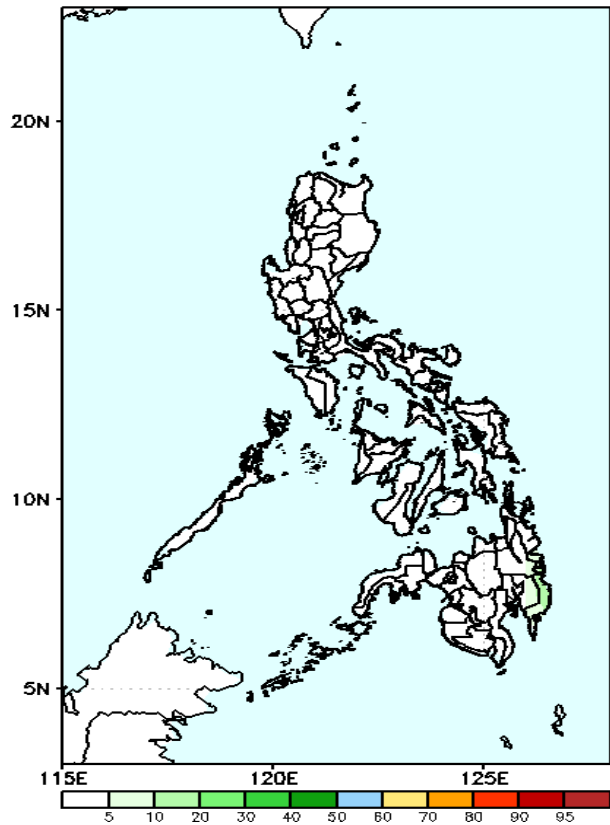
GEFS Week-2 Exceedance Prob. > 100mm
Valid: 20240117 - 20240123



Probability to Exceed 100mm

- Low across the country.

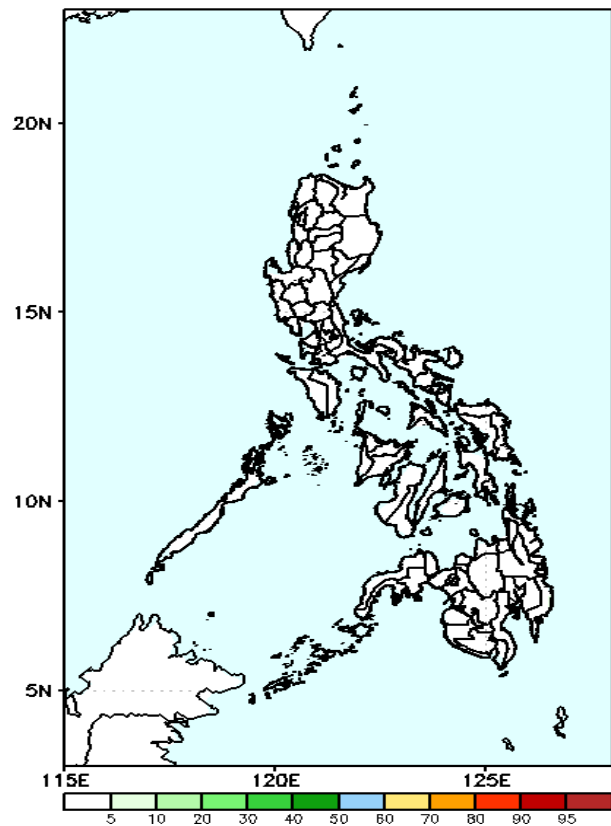
GEFS Week-2 Exceedance Prob. > 150mm
Valid: 20240117 - 20240123



Probability to Exceed 150mm

- Low across the country.

GEFS Week-2 Exceedance Prob. > 200mm
Valid: 20240117 - 20240123

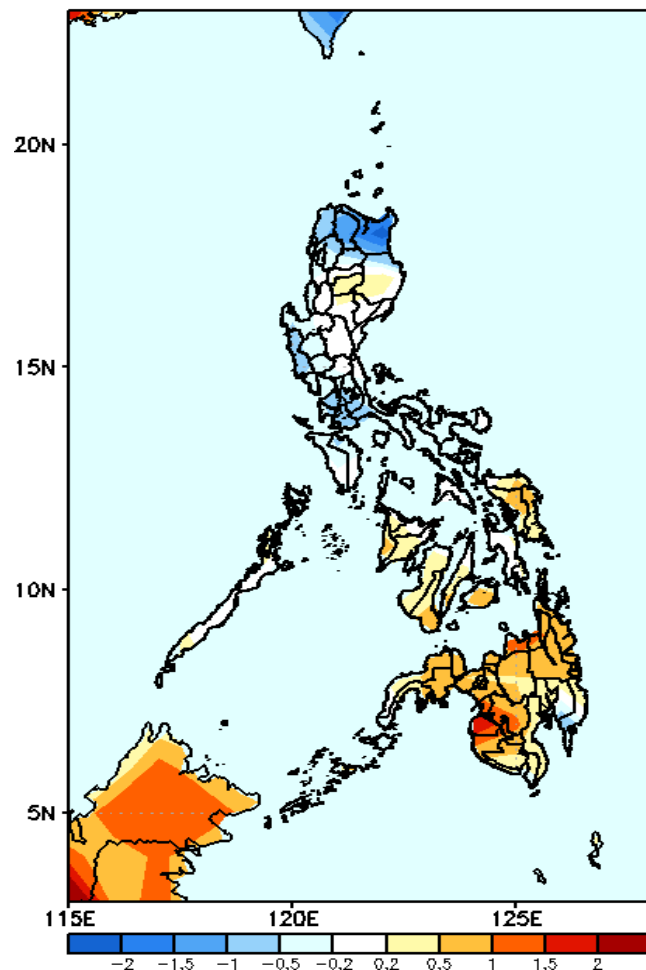


Probability to Exceed 200mm

- Low across the country.

GEFS Week-1 & 2 Forecasts: T2m Anomaly

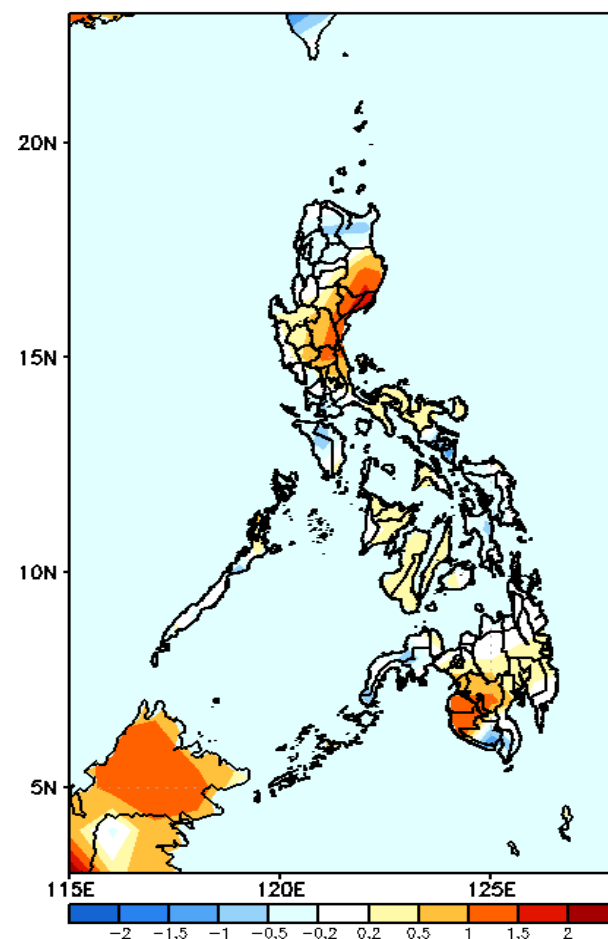
GEFS Week-1 T2m Anomaly
Valid: 20240110 - 20240116



2m Temperature Week 1: January 08-14, 2024

Near to cooler than average surface air temperature average will likely be experienced in most parts of Luzon while slightly warmer to warmer than average surface air temperature will likely be experienced in most parts of Visayas and Mindanao.

GEFS Week-2 T2m Anomaly
Valid: 20240117 - 20240123



2m Temperature Week 1: January 15-21, 2024

Average to warmer than average surface air temperature will likely be experienced in most parts of the country except Cagayan, Apayao, Sorsogon, MIMAROPA, Eastern Samar and South Cotabato where slightly cooler than average temperature is expected.