



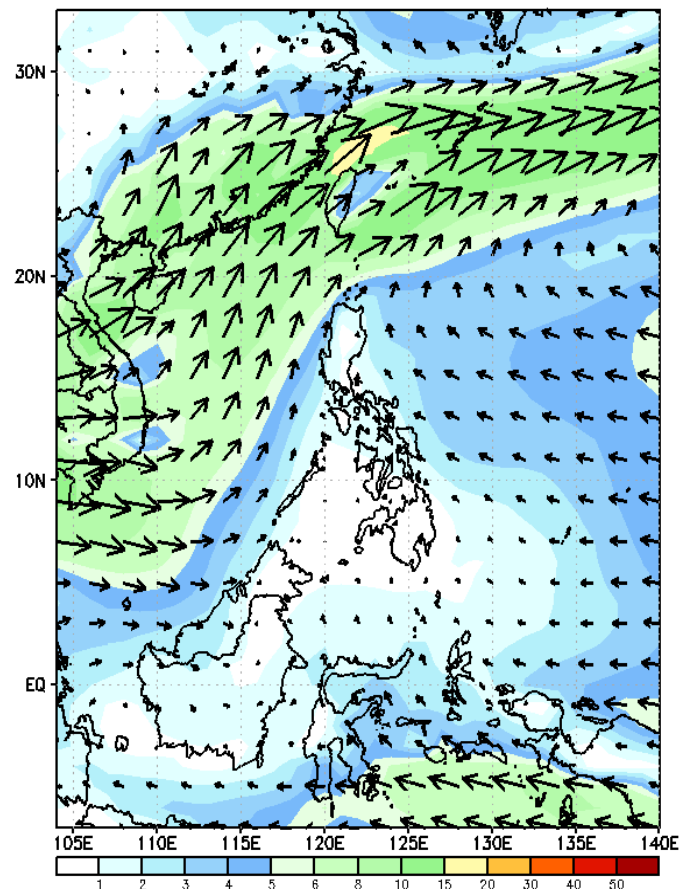
Week 1 & Week 2 Forecast for the Philippines using GEFS Model



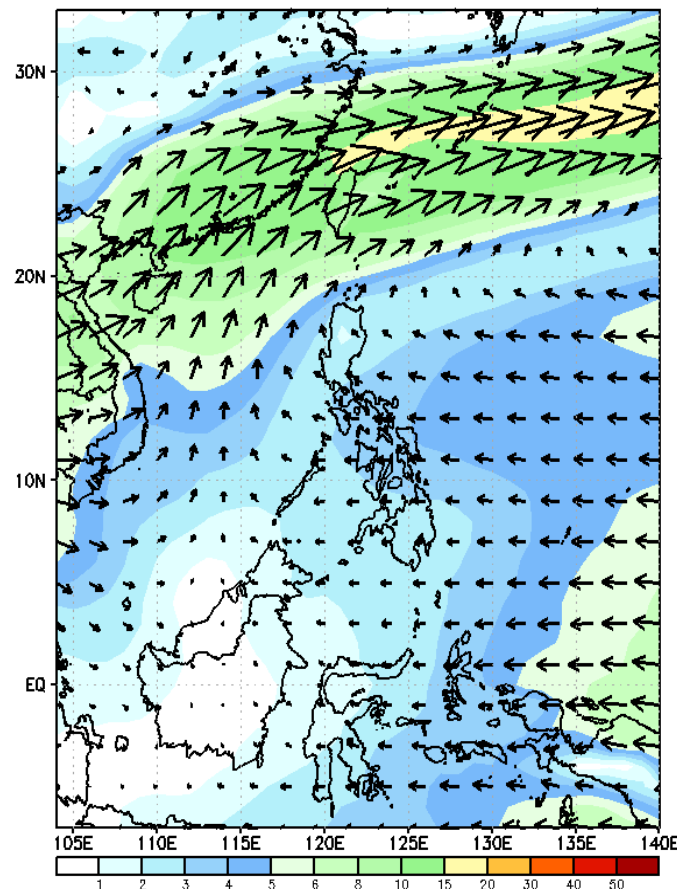
GEFS Week-1 Wind Forecasts:

Week 1: Jun 10-16, 2024

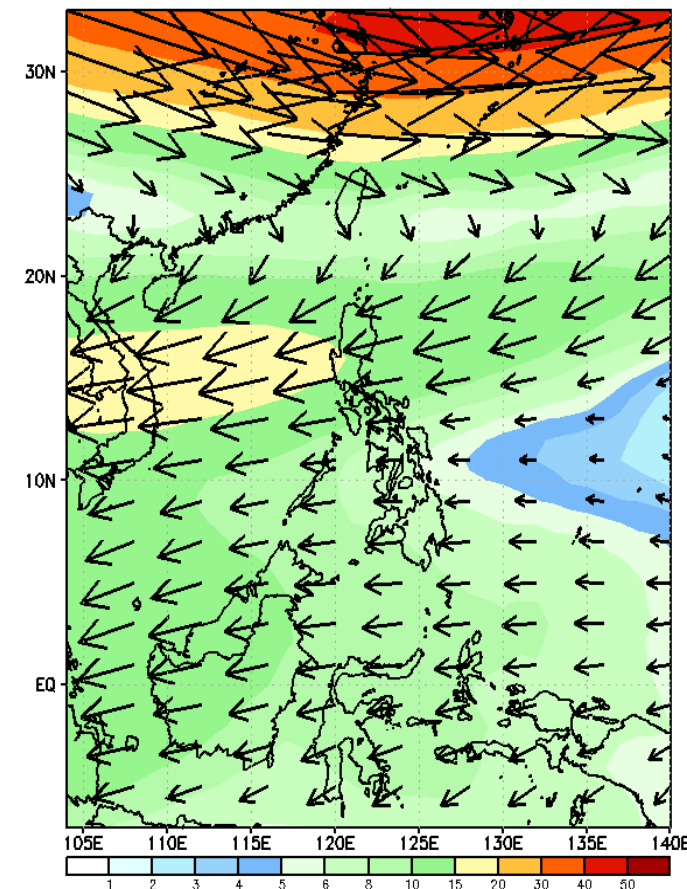
GEFS Week-1 850-hPa Wind Total
Valid: 20240610 - 20240616



GEFS Week-1 700-hPa Wind Total
Valid: 20240610 - 20240616



GEFS Week-1 200-hPa Wind Total
Valid: 20240610 - 20240616



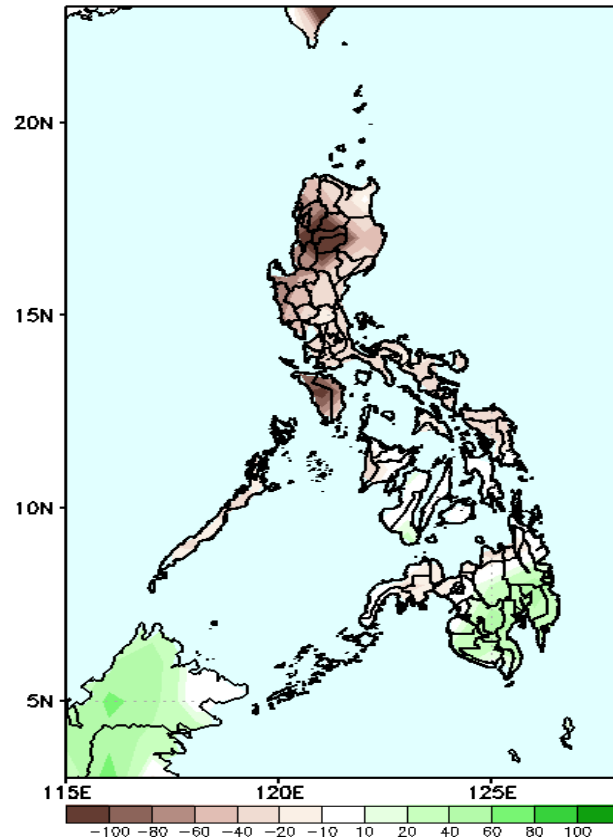
Southwest Monsoon affecting some parts of Western Luzon. Easterlies affecting the rest of the country.

Precipitation Anomaly and Exceedance Probability > 25/50 mm

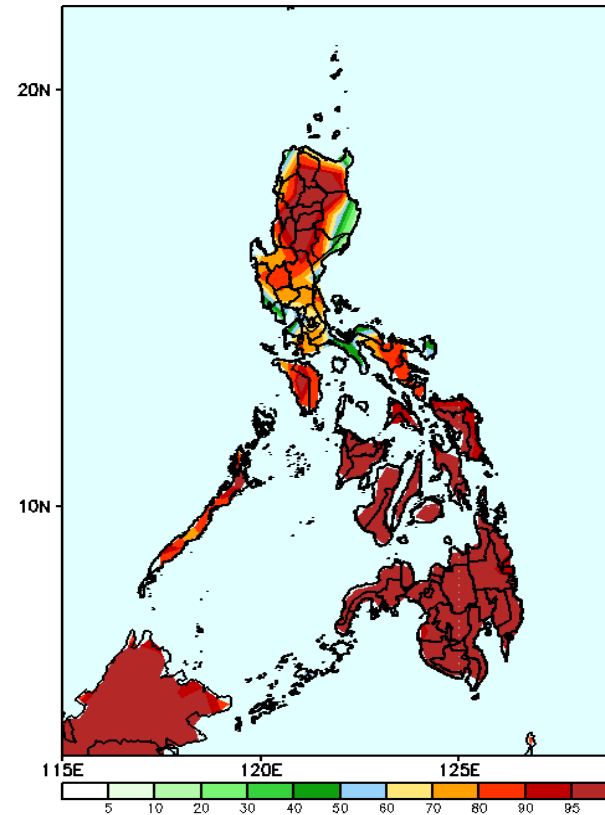


Week 1: Jun 10-16, 2024

GEFS Week-1 Precip Anomaly
Valid: 20240610 - 20240616



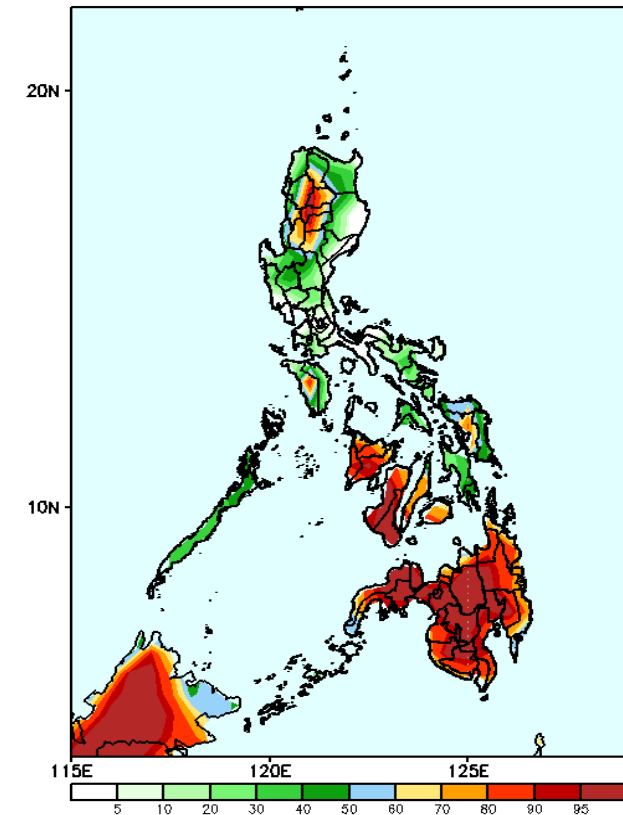
GEFS Week-1 Exceedance Prob. > 25mm
Valid: 20240610 - 20240616



Probability to Exceed 25mm

- High to very high over CAR, Visayas and Mindanao;
- Moderate to high over the rest of the country.

GEFS Week-1 Exceedance Prob. > 50mm
Valid: 20240610 - 20240616

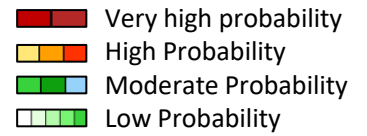


Probability to Exceed 50mm

- High to very high over most of Mindanao and Western Visayas;
- Moderate to high over CAR, Nueva Vizcaya, La Union, Occidental Mindoro, rest of Visayas, and the westernmost of Mindanao;
- Low to moderate over the rest of Luzon.

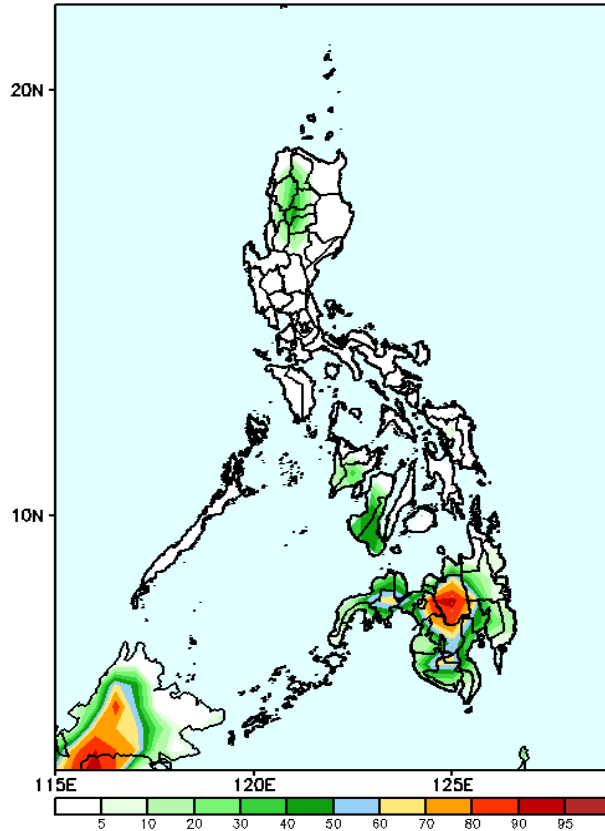
Rainfall deficit of more than 100mm in CAR, Ilocos Sur and Mindoro; 20-90mm for the rest of Luzon, Visayas and Northern Mindanao while 20-60mm increase of rainfall for the rest of Mindanao. .

Exceedance Probability > 100/150/200 mm



Week 1: Jun 10-16, 2024

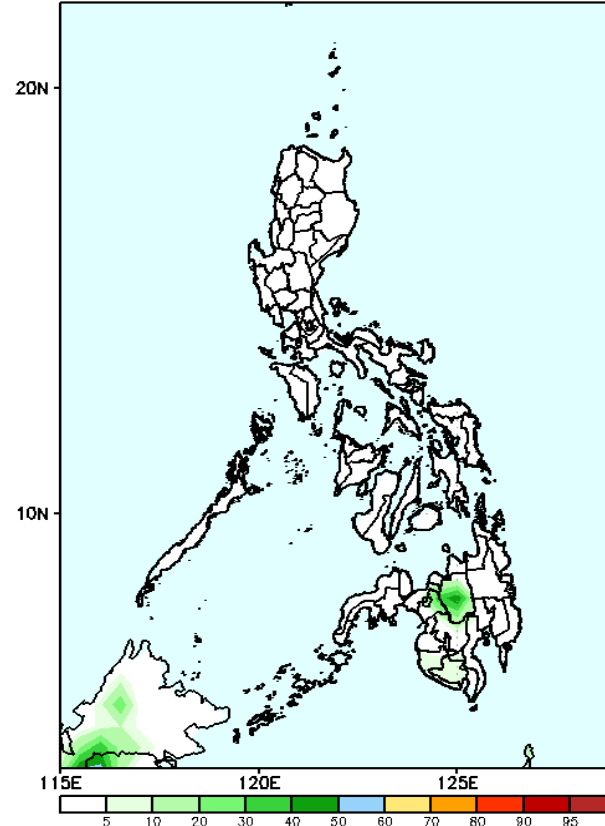
GEFS Week-1 Exceedance Prob. > 100mm
Valid: 20240610 - 20240616



Probability to Exceed 100mm

- Moderate to high over Bukidnon, Lanao Provinces, North Cotabato and Zamboanga del Sur;
- Low to moderate over the rest of Mindanao;
- Low over the rest of the country.

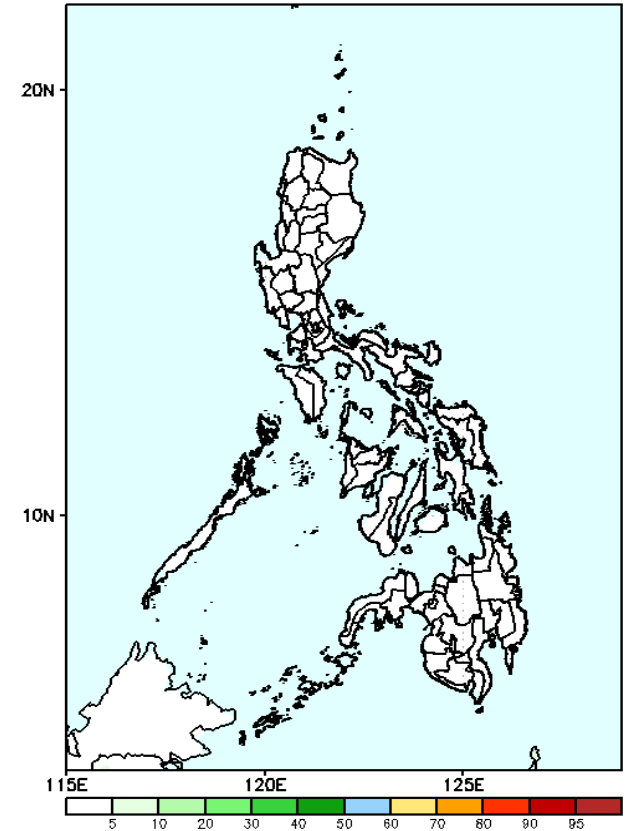
GEFS Week-1 Exceedance Prob. > 150mm
Valid: 20240610 - 20240616



Probability to Exceed 150mm

- Low across the country.

GEFS Week-1 Exceedance Prob. > 200mm
Valid: 20240610 - 20240616



Probability to Exceed 200mm

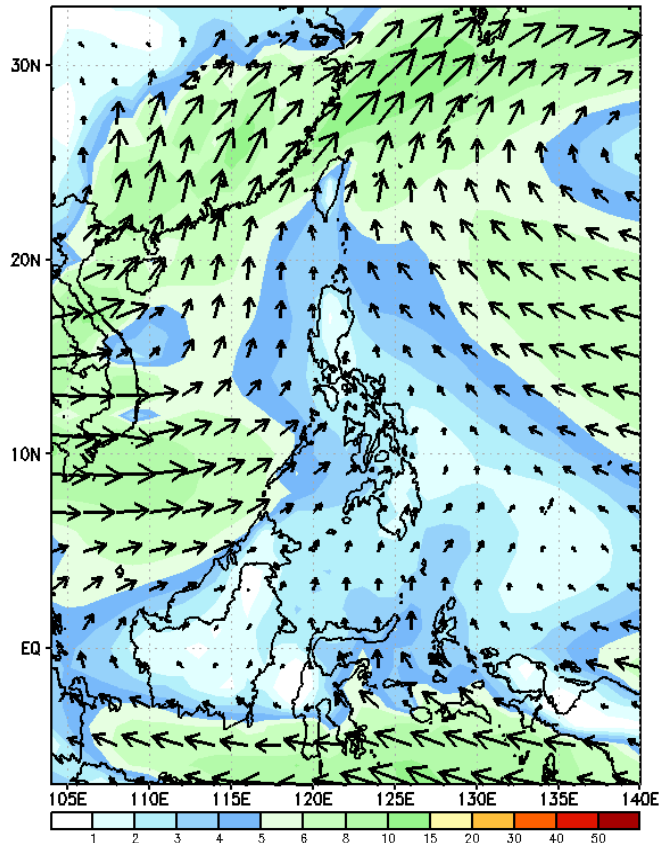
- Low across the country.



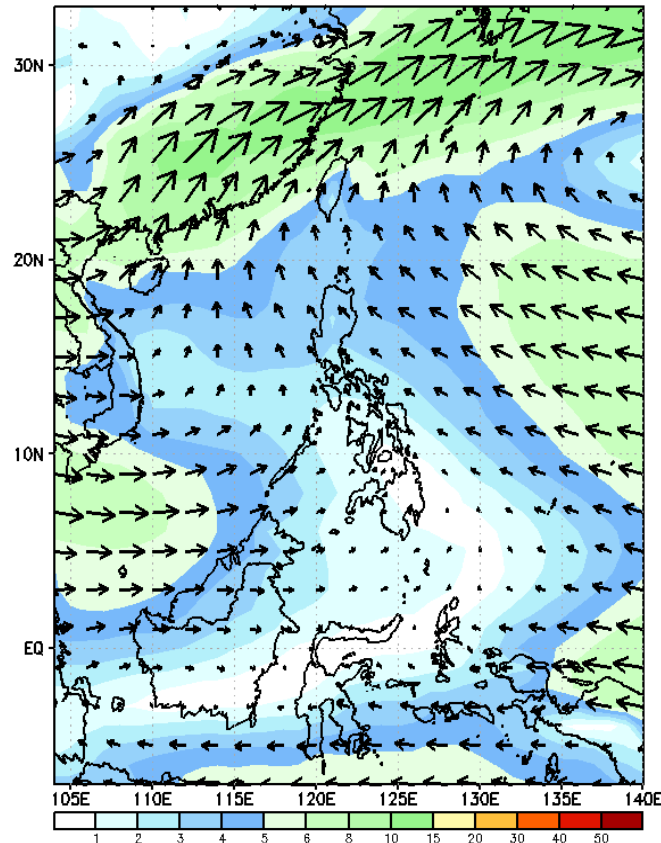
GEFS Week-2 Wind Forecasts:

Week 2: Jun 17-23, 2024

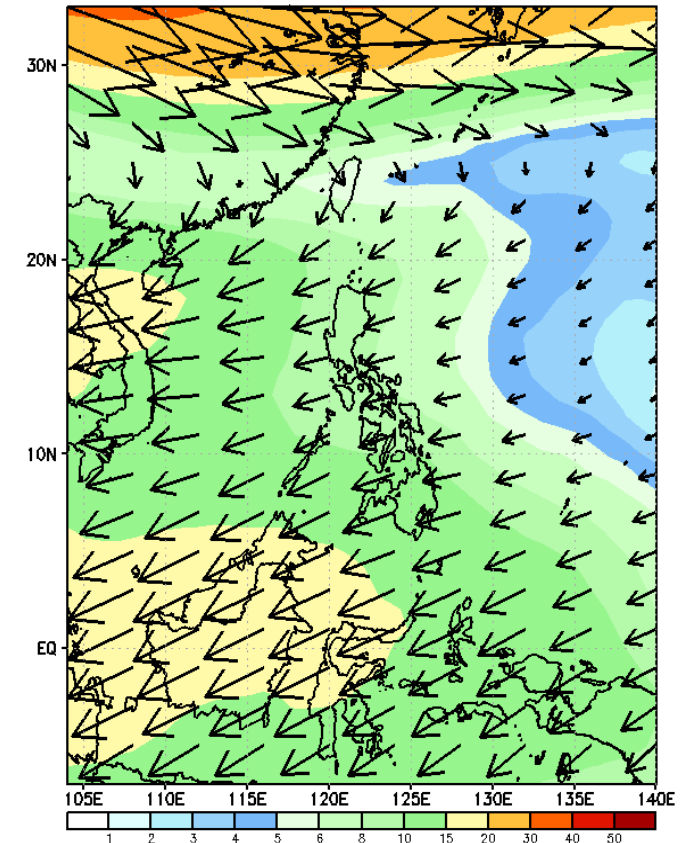
GEFS Week-2 850-hPa Wind Total
Valid: 20240617 - 20240623



GEFS Week-2 700-hPa Wind Total
Valid: 20240617 - 20240623

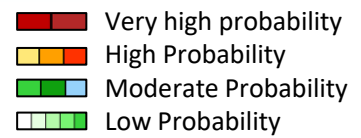


GEFS Week-2 200-hPa Wind Total
Valid: 20240617 - 20240623



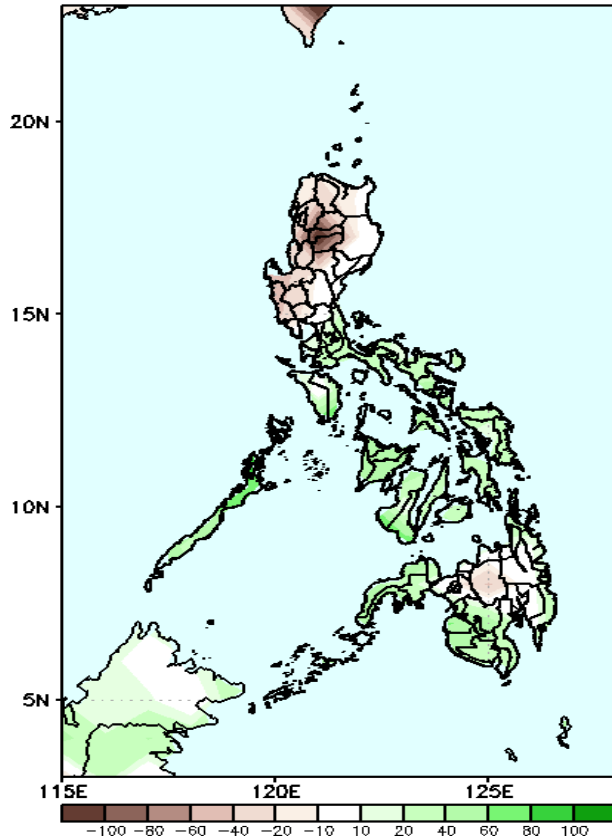
Southwest Monsoon affecting western sections of Luzon and Visayas. Easterlies affecting the rest of the country .

Precipitation Anomaly and Exceedance Probability > 25/50 mm



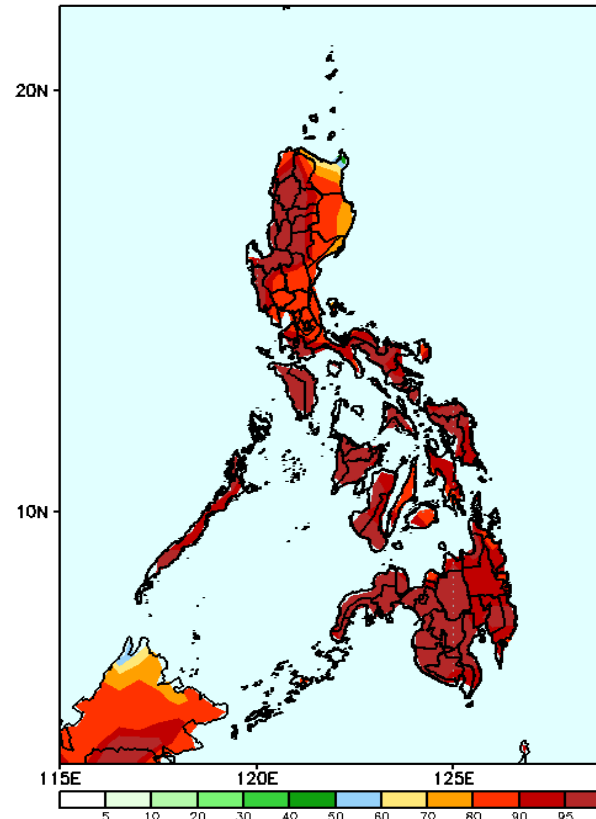
Week 2: Jun 17-23, 2024

GEFS Week-2 Precip Anomaly
Valid: 20240617 - 20240623



Rainfall deficit of 20-80mm is expected in northern and southern Luzon and Bukidnon while 20-80mm Increase of rainfall for the rest of the country.

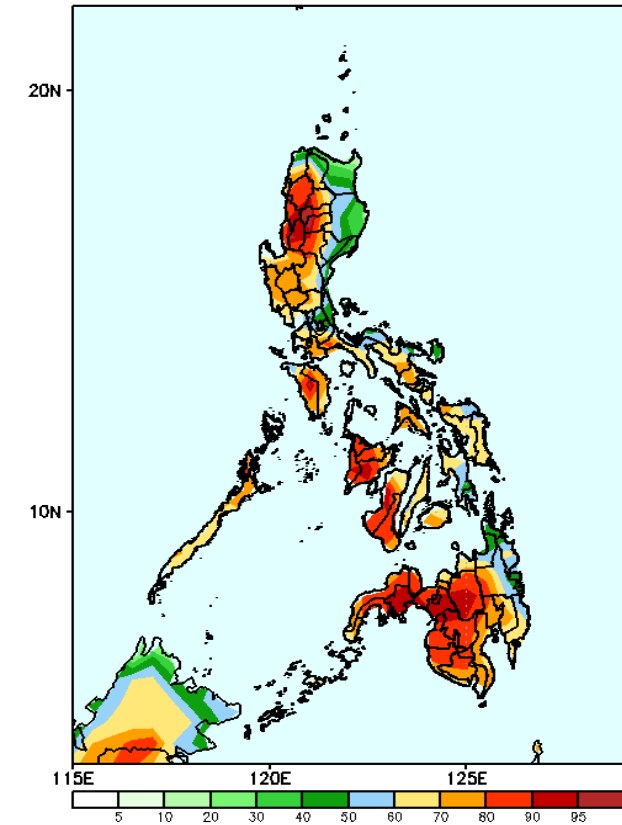
GEFS Week-2 Exceedance Prob. > 25mm
Valid: 20240617 - 20240623



Probability to Exceed 25mm

- High to very high over Visayas, Mindanao, NCR, Southern & Central Luzon, and the western section of Northern Luzon;
- Moderate to high over the rest of Northern Luzon.

GEFS Week-2 Exceedance Prob. > 50mm
Valid: 20240617 - 20240623



Probability to Exceed 50mm

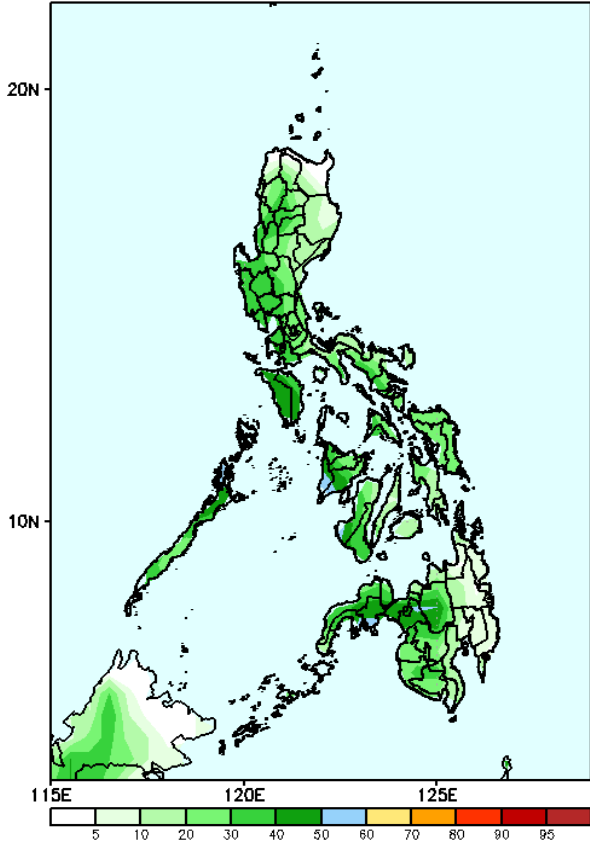
- High to very high over most of Western Visayas and Western and Central Mindanao;
- Moderate to high over the rest of the country.

Exceedance Probability > 100/150/200 mm

Week 2: Jun 17-23, 2024

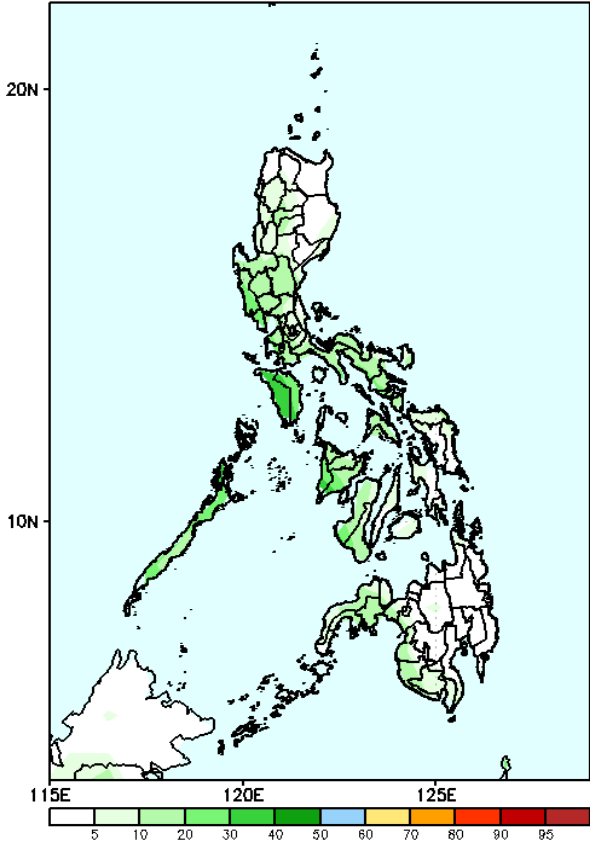
- Very high probability
- High Probability
- Moderate Probability
- Low Probability

GEFS Week-2 Exceedance Prob. > 100mm
Valid: 20240617 – 20240623



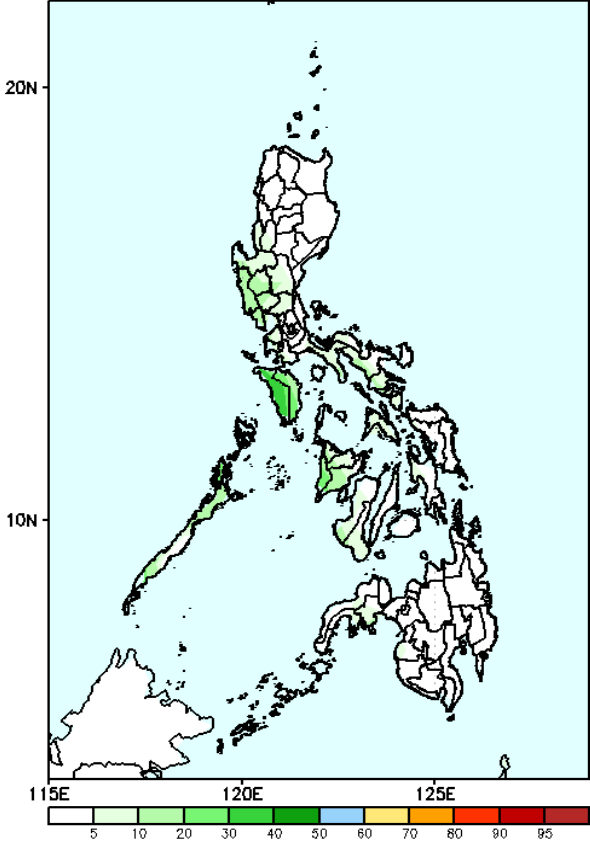
Probability to Exceed 100mm
• Low to moderate across the country.

GEFS Week-2 Exceedance Prob. > 150mm
Valid: 20240617 – 20240623



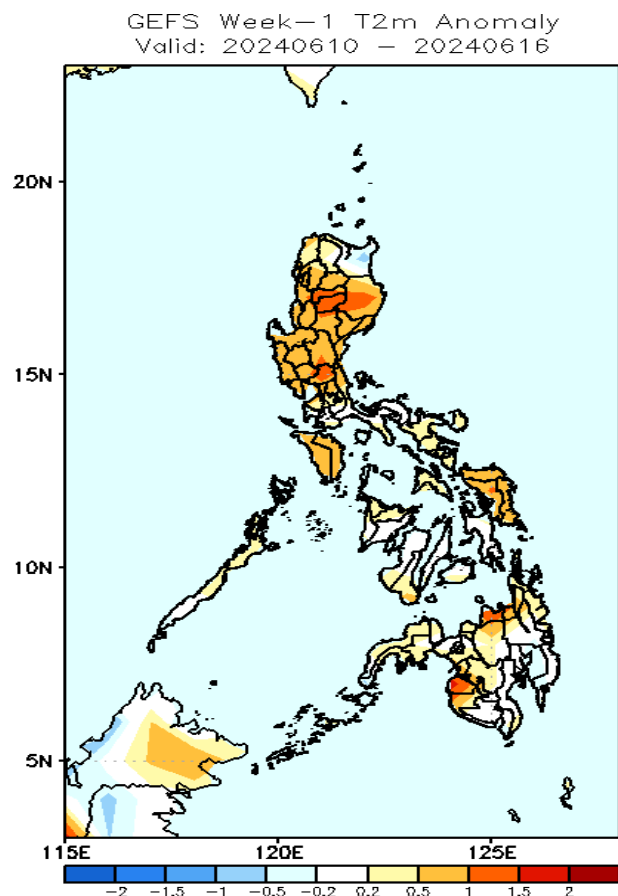
Probability to Exceed 150mm
• Low across the country.

GEFS Week-2 Exceedance Prob. > 200mm
Valid: 20240617 – 20240623



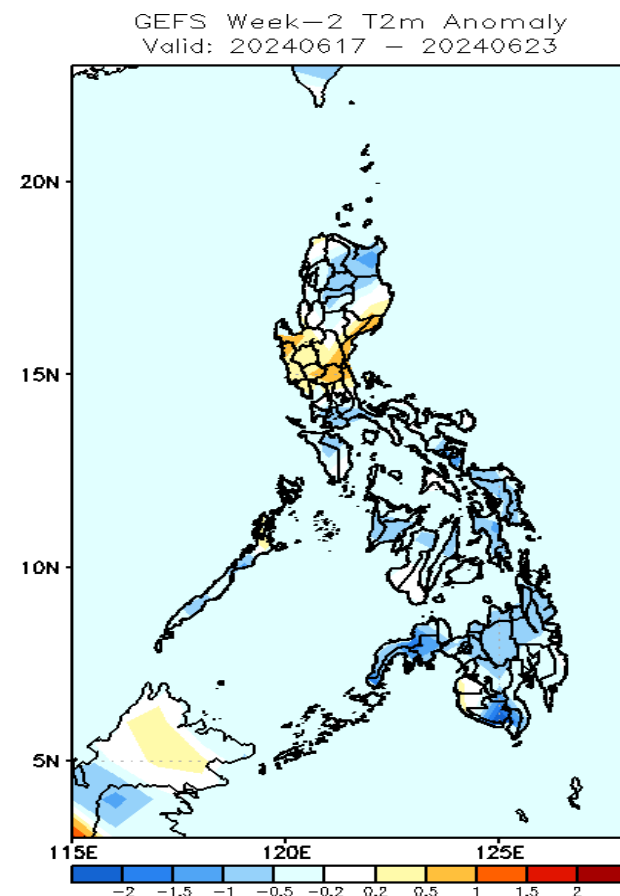
Probability to Exceed 200mm
• Low across the country.

GEFS Week-1 & 2 Forecasts: T2m Anomaly



2m Temperature Week 1: Jun 10-16, 2024

Near to warmer than average surface air temperature will likely be experienced in most parts of the country.



2m Temperature Week 2: Jun 17-23, 2024

Near to cooler surface air temperature will likely be experienced in most parts of the country except in central Luzon and some areas in eastern Luzon where slightly warmer to warmer than average temperature is expected.