



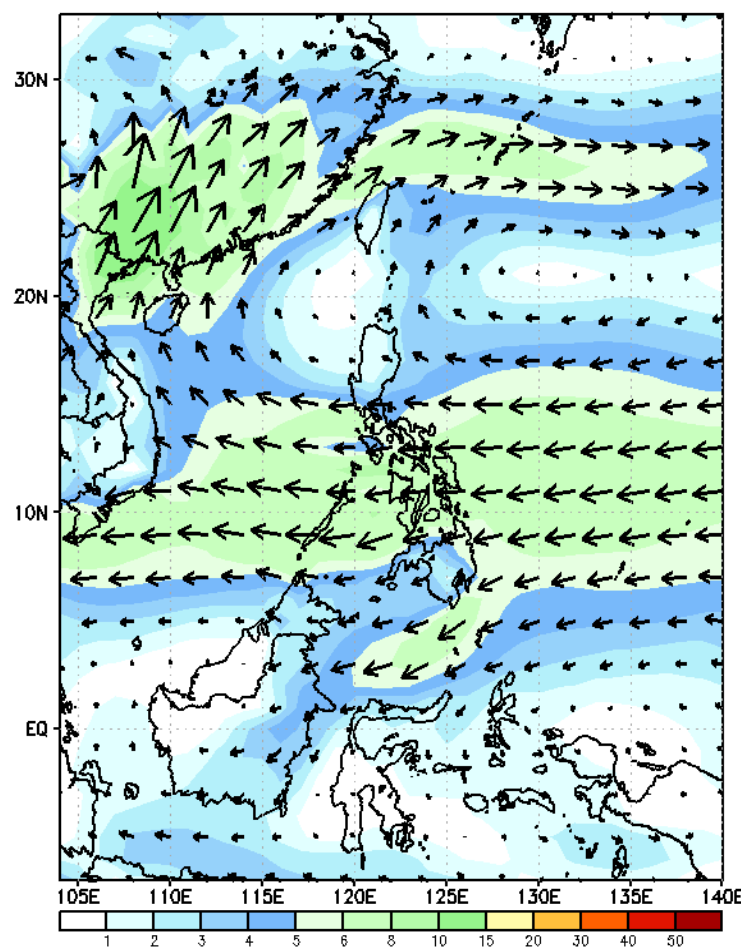
Week 1 & Week 2 Forecast for the Philippines using GEFS Model



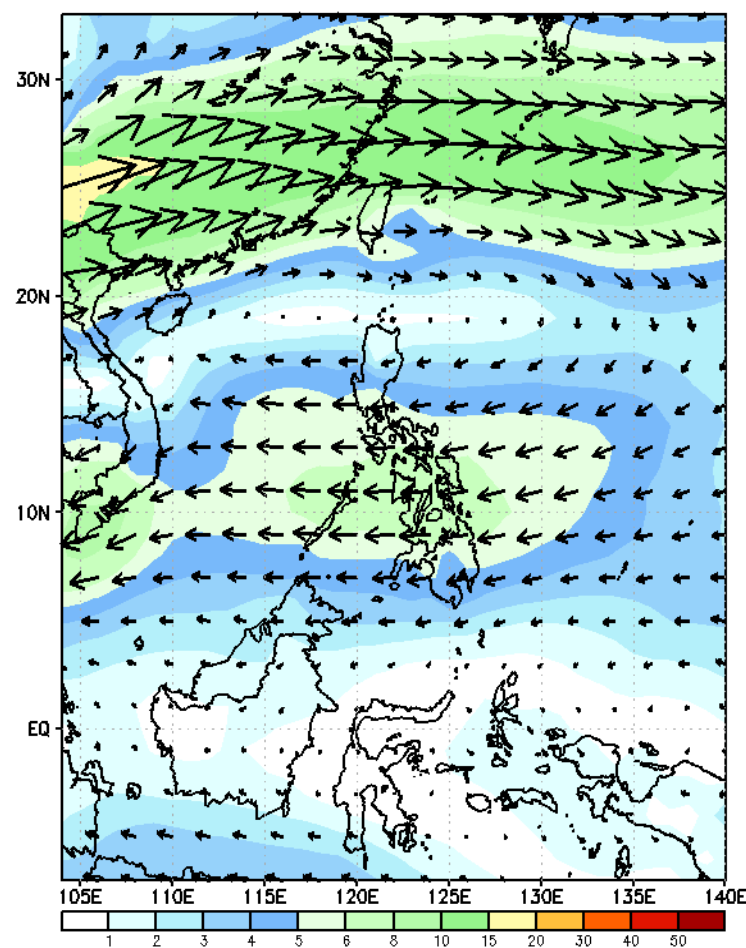
GEFS Week-1 Wind Forecasts:

Week 1: April 12-18, 2024

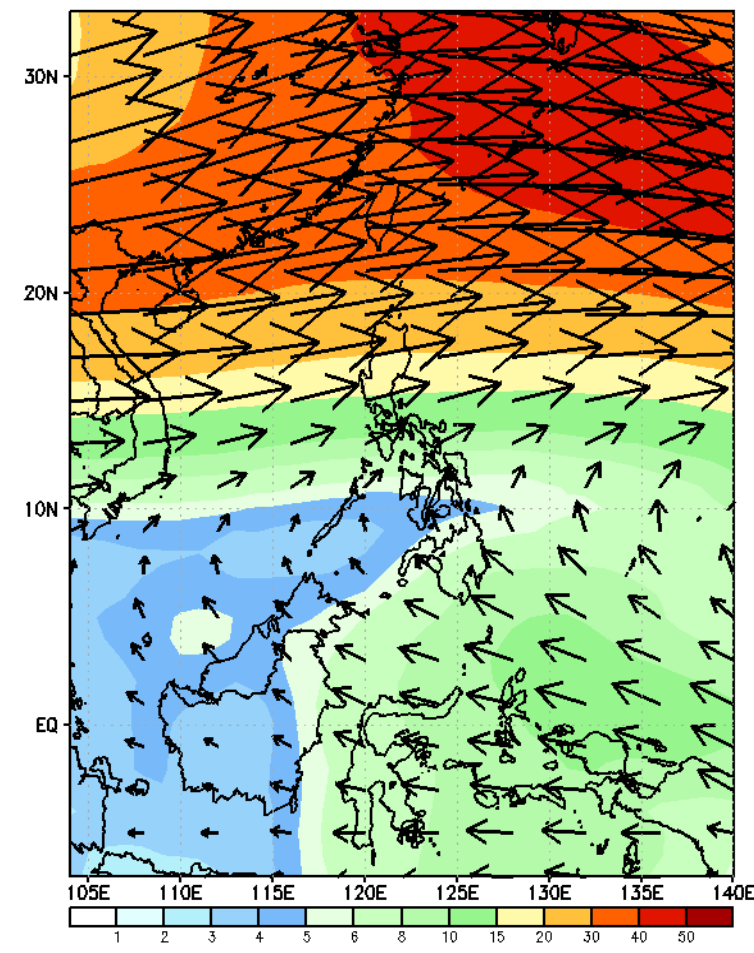
GEFS Week-1 850-hPa Wind Total
Valid: 20240412 - 20240418



GEFS Week-1 700-hPa Wind Total
Valid: 20240412 - 20240418



GEFS Week-1 200-hPa Wind Total
Valid: 20240412 - 20240418



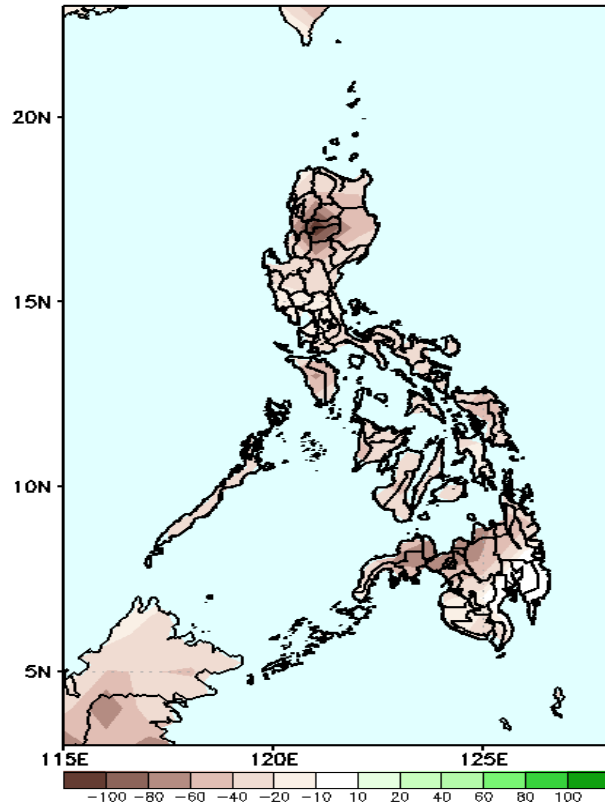
Easterlies continuously affect most parts of the country. Expect dry and warm days during the forecast period.

Precipitation Anomaly and Exceedance Probability > 25/50 mm



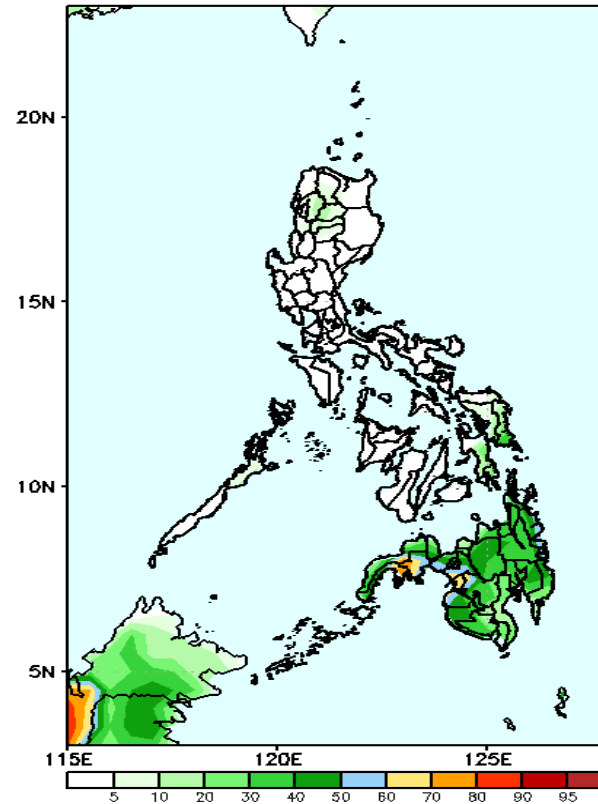
Week 1: April 12-18, 2024

GEFS Week-1 Precip Anomaly
Valid: 20240412 - 20240418



Rainfall deficit of 20-80mm in most parts of the country.

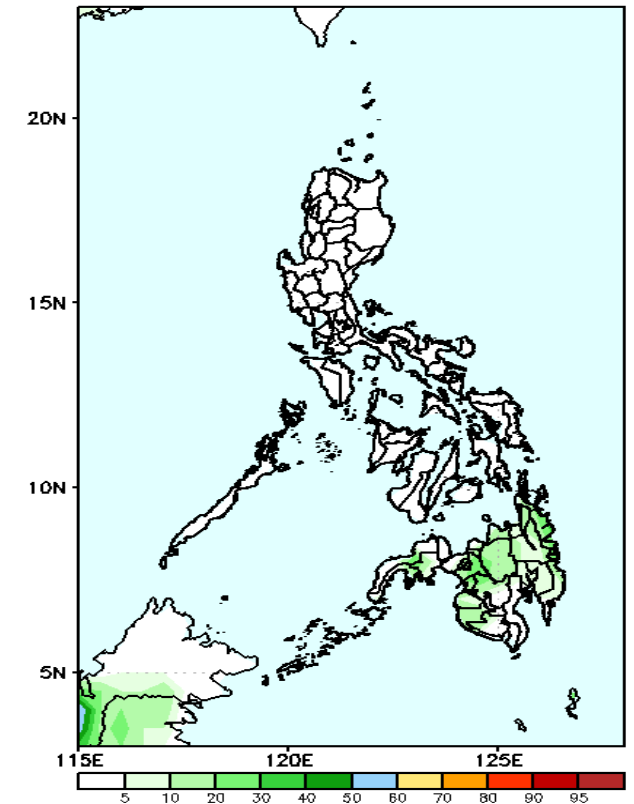
GEFS Week-1 Exceedance Prob. > 25mm
Valid: 20240412 - 20240418



Probability to Exceed 25mm

- Moderate to High over the western portion of Mindanao;
- Low to moderate over the rest of the country

GEFS Week-1 Exceedance Prob. > 50mm
Valid: 20240412 - 20240418

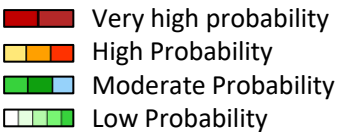


Probability to Exceed 50mm

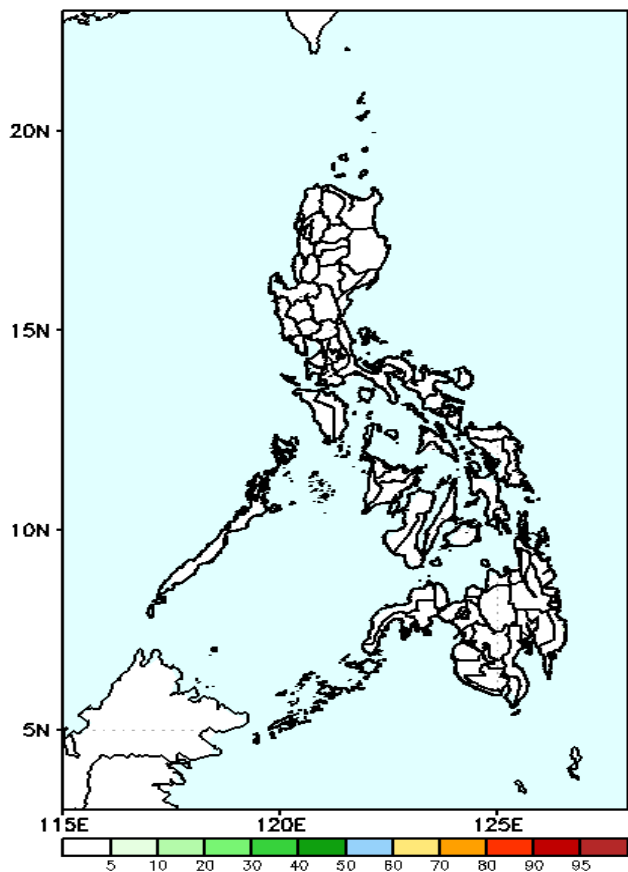
- Low across the country.

Exceedance Probability > 100/150/200 mm

Week 1: April 12-18, 2024

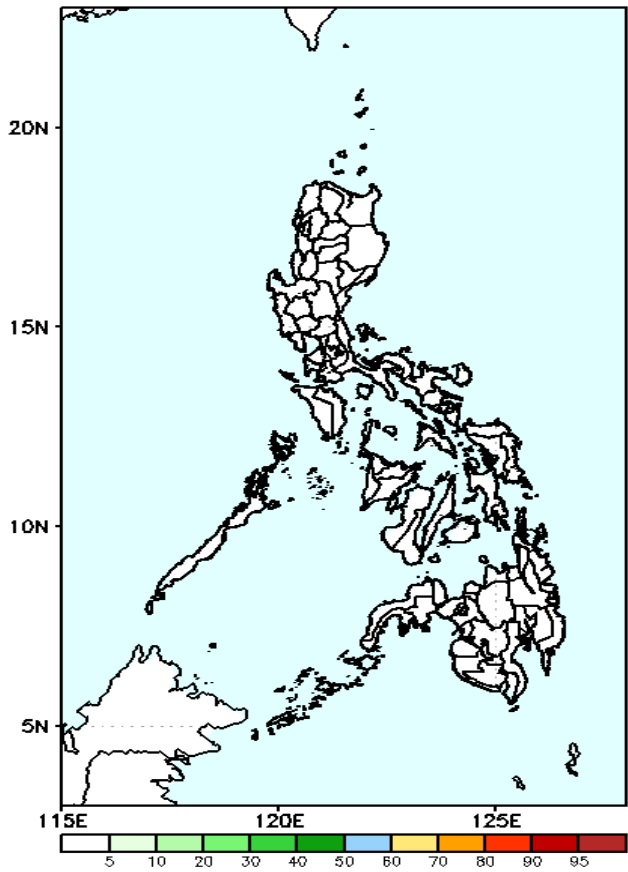


GEFS Week-1 Exceedance Prob. > 100mm
Valid: 20240412 – 20240418



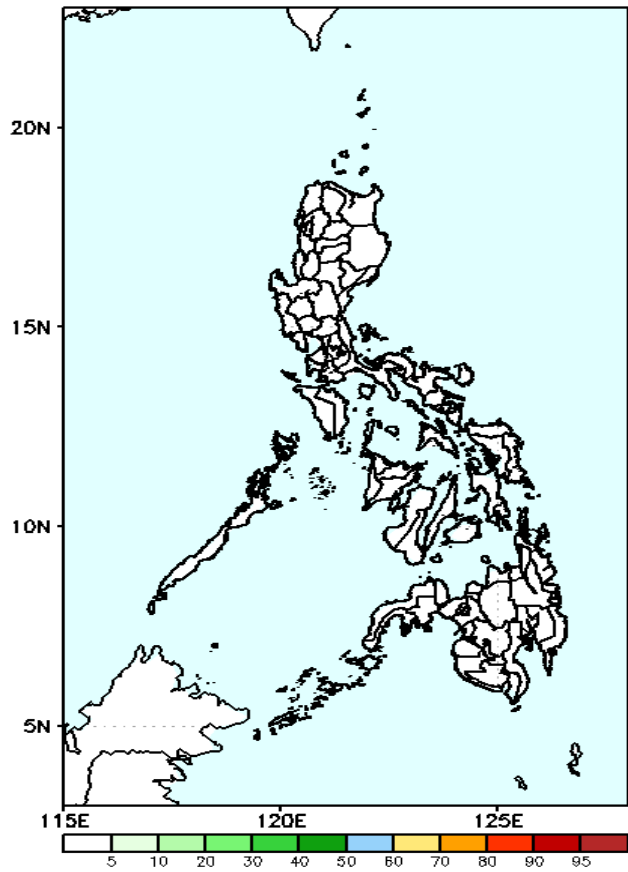
Probability to Exceed 100mm
• Low across the country.

GEFS Week-1 Exceedance Prob. > 150mm
Valid: 20240412 – 20240418



Probability to Exceed 150mm
• Low across the country.

GEFS Week-1 Exceedance Prob. > 200mm
Valid: 20240412 – 20240418

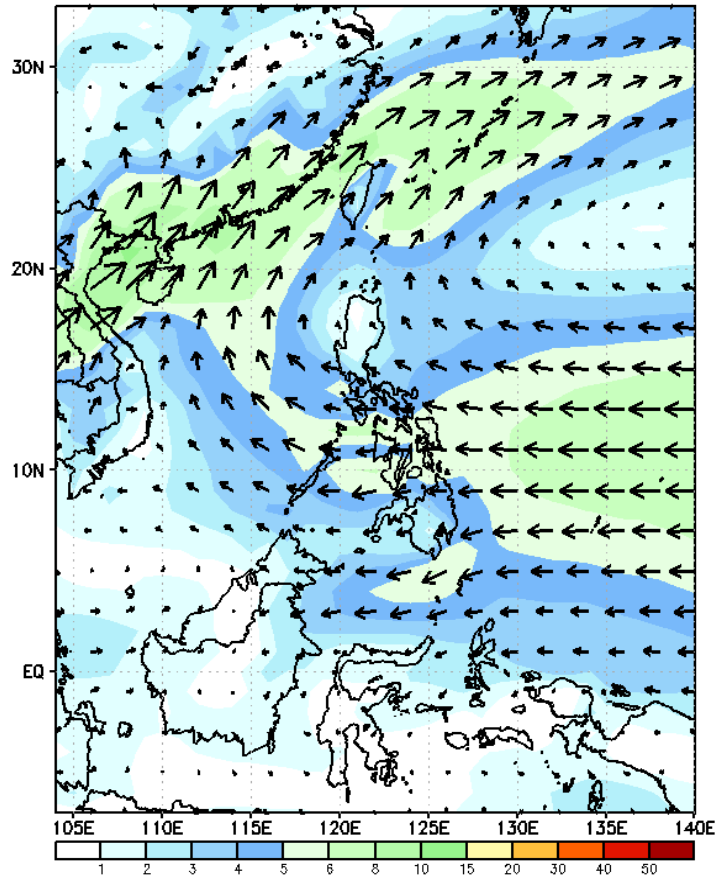


Probability to Exceed 200mm
• Low across the country.

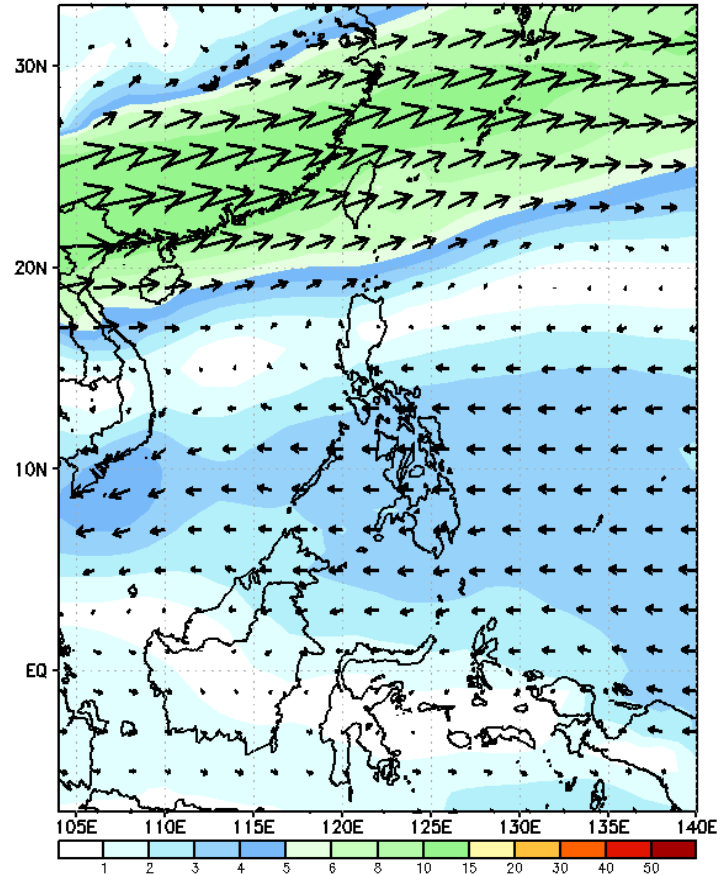
GEFS Week-2 Wind Forecasts:

Week 2: Apr 19-25, 2024

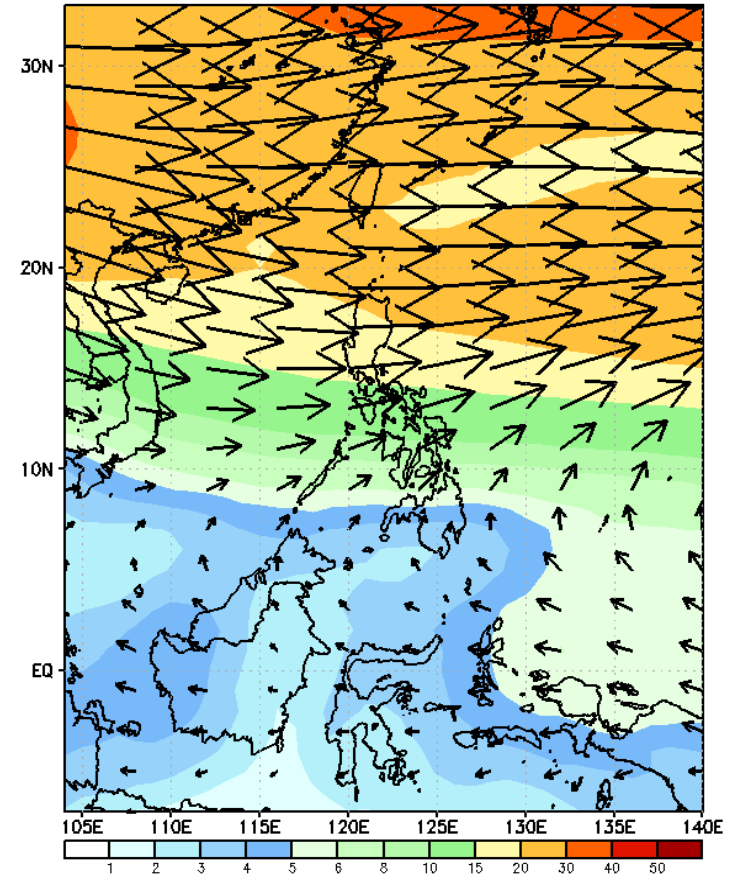
GEFS Week-2 850-hPa Wind Total
Valid: 20240419 - 20240425



GEFS Week-2 700-hPa Wind Total
Valid: 20240419 - 20240425

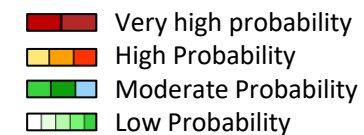


GEFS Week-2 200-hPa Wind Total
Valid: 20240419 - 20240425



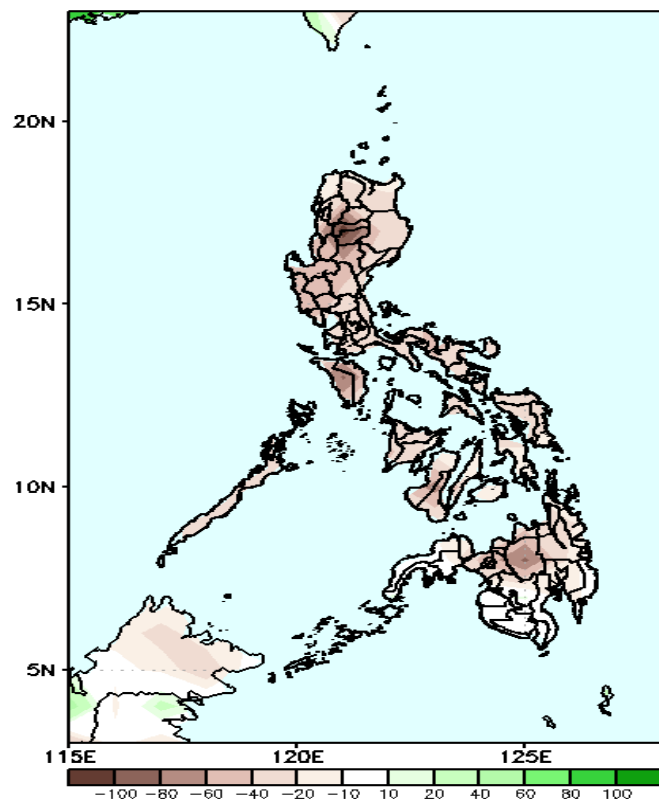
Easterlies will likely prevail in most parts of the country. Expect dry and warm days during the forecast period.

Precipitation Anomaly and Exceedance Probability > 25/50 mm



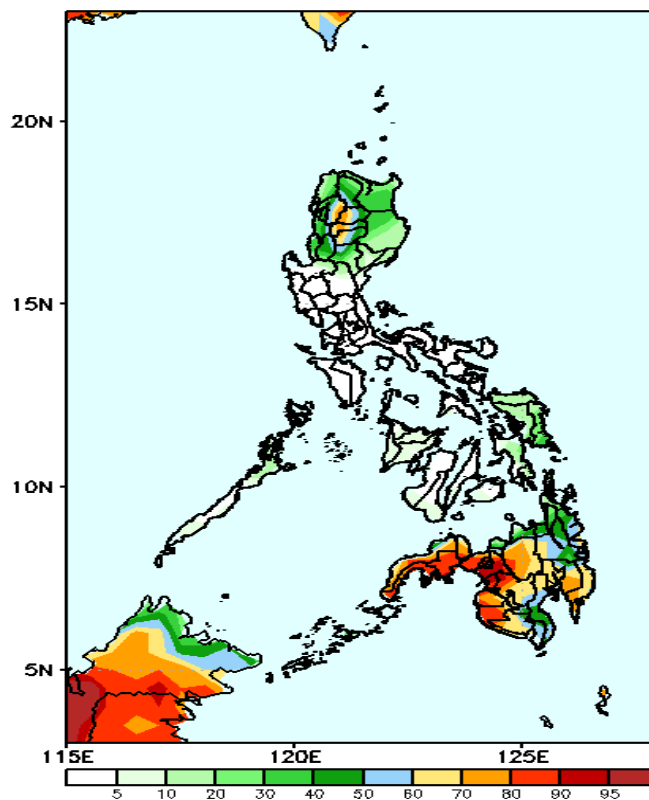
Week 2: Apr 19-25, 2024

GEFS Week-2 Precip. Anomaly
Valid: 20240419 - 20240425



Rainfall deficit of 20-80mm in most parts of the country.

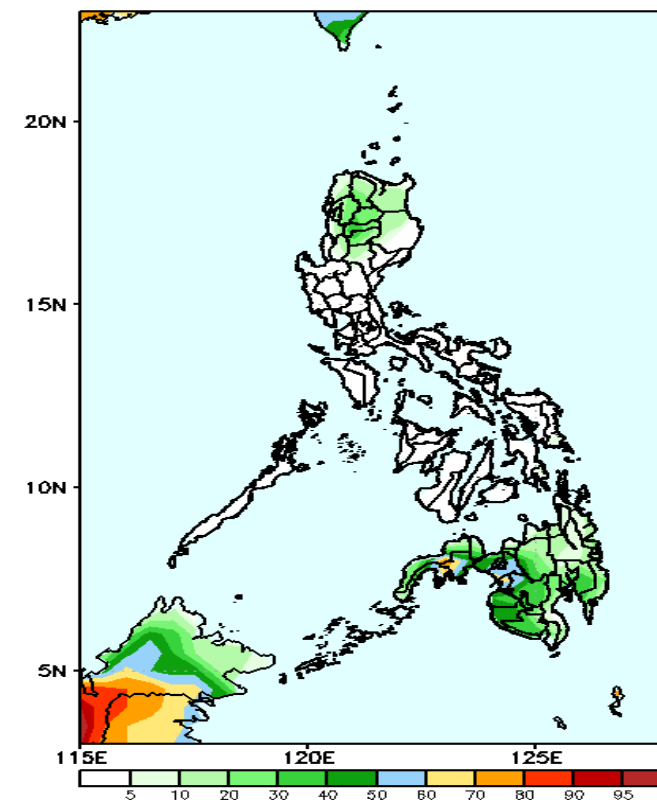
GEFS Week-2 Exceedance Prob. > 25mm
Valid: 20240419 - 20240425



Probability to Exceed 25mm

- Moderate to high over CAR and most of Mindanao;
- Low to moderate over the rest of Northern Luzon;
- Low over the rest of the country.

GEFS Week-2 Exceedance Prob. > 50mm
Valid: 20240419 - 20240425



Probability to Exceed 50mm

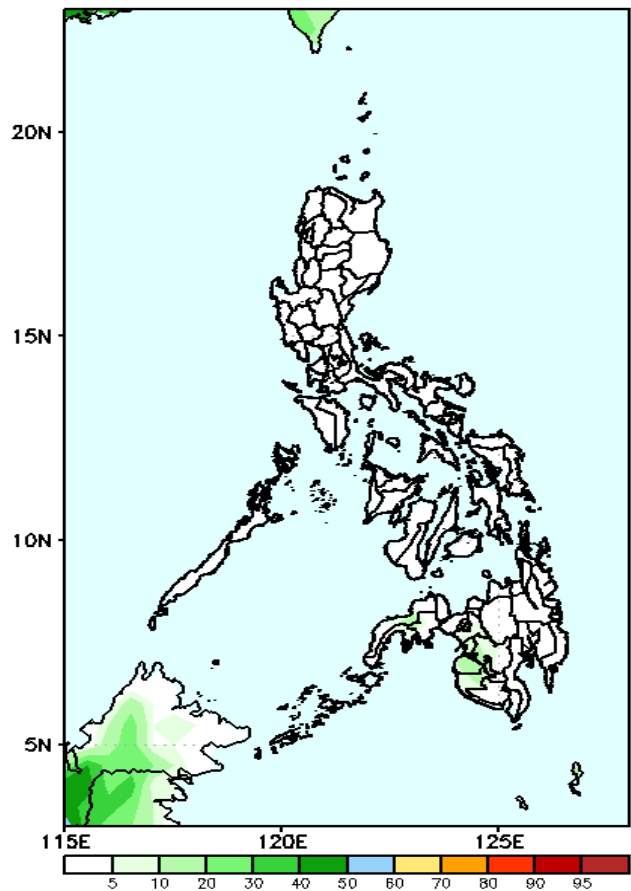
- Moderate to High over the western portion of Mindanao;
- Low to moderate over the rest of the country.

Exceedance Probability > 100/150/200 mm

Week 2: Apr 19-25, 2024

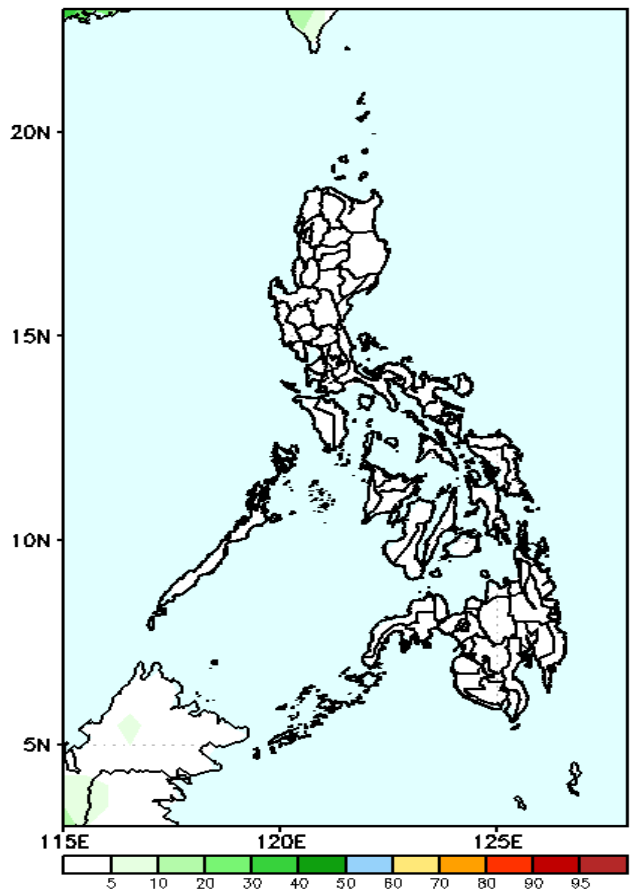
- Very high probability
- High Probability
- Moderate Probability
- Low Probability

GEFS Week-2 Exceedance Prob. > 100mm
Valid: 20240419 - 20240425



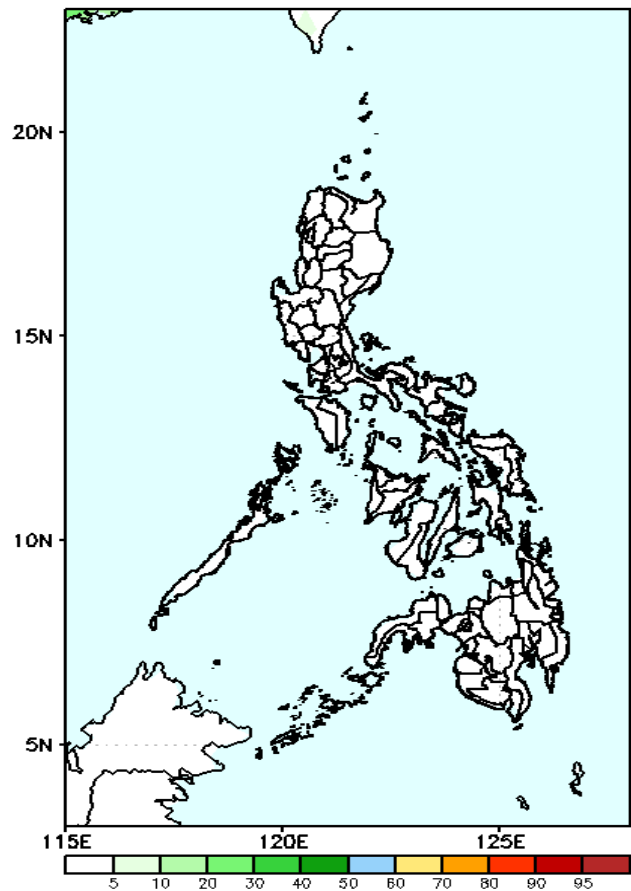
Probability to Exceed 100mm
• Low across the country.

GEFS Week-2 Exceedance Prob. > 150mm
Valid: 20240419 - 20240425



Probability to Exceed 150mm
• Low across the country.

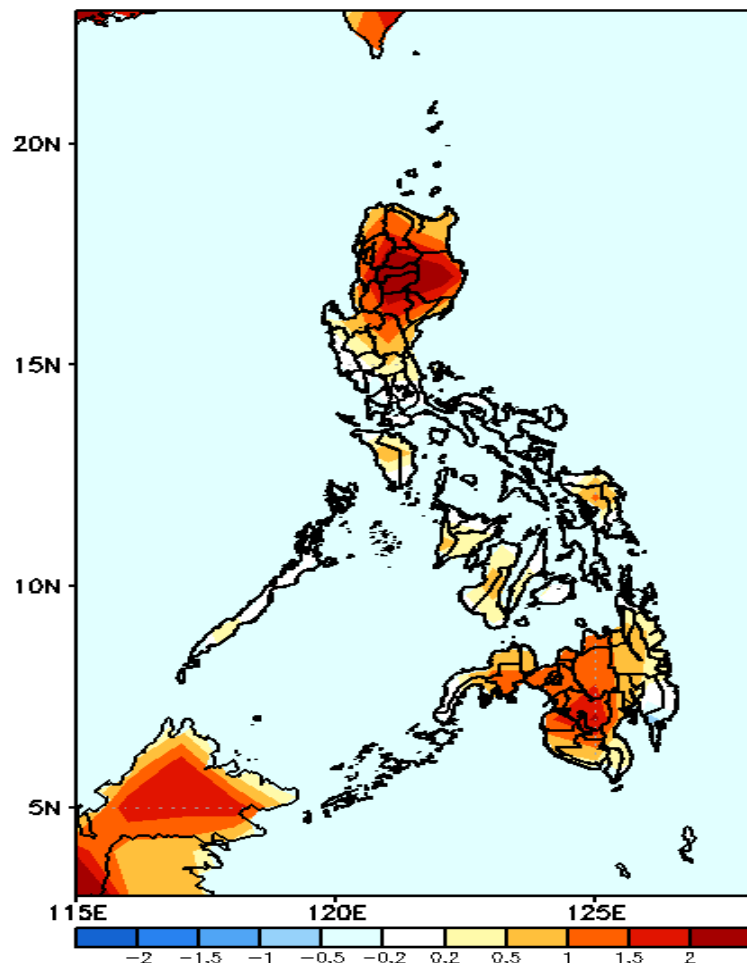
GEFS Week-2 Exceedance Prob. > 200mm
Valid: 20240419 - 20240425



Probability to Exceed 200mm
• Low across the country.

GEFS Week-1 & 2 Forecasts: T2m Anomaly

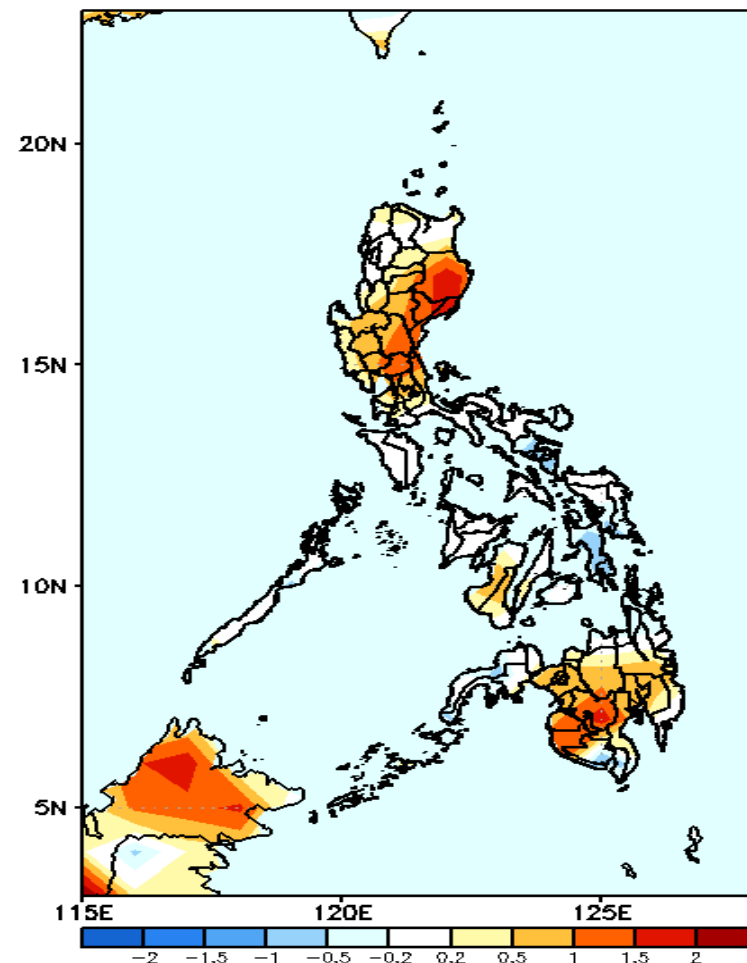
GEFS Week-1 T2m Anomaly
Valid: 20240412 – 20240418



2m Temperature Week 1: April 12-18, 2024

Warmer than average surface air temperature will likely be experienced in most parts of northern & central Luzon and western Mindanao; Average to slightly warmer for the rest of the country.

GEFS Week-2 T2m Anomaly
Valid: 20240419 – 20240425



2m Temperature Week 2: Apr 19-25, 2024

Slightly warmer to warmer than average surface air temperature will likely be experienced in most parts of eastern and central Luzon and western Mindanao while near to slightly cooler for the rest of the country.