



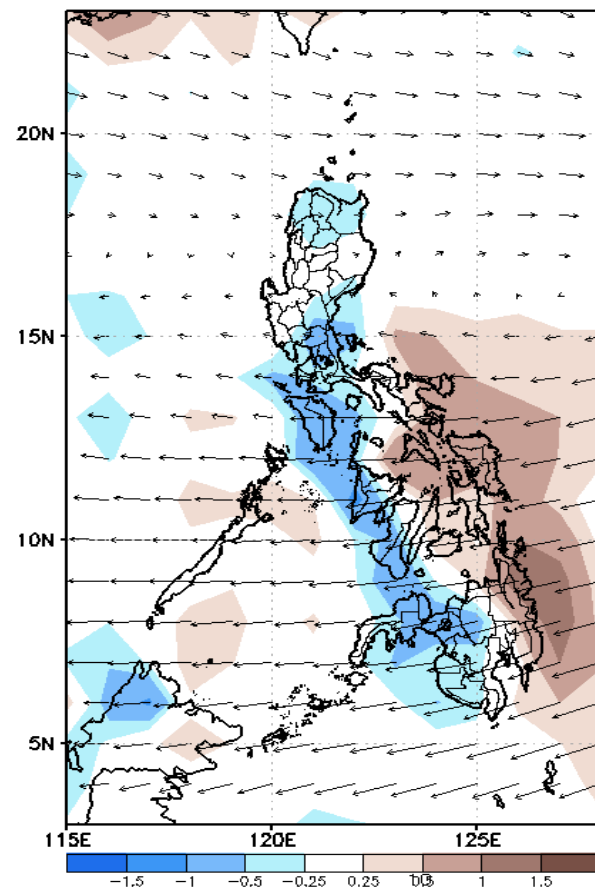
Week 1 & Week 2 Forecast for the Philippines using GEFS Model



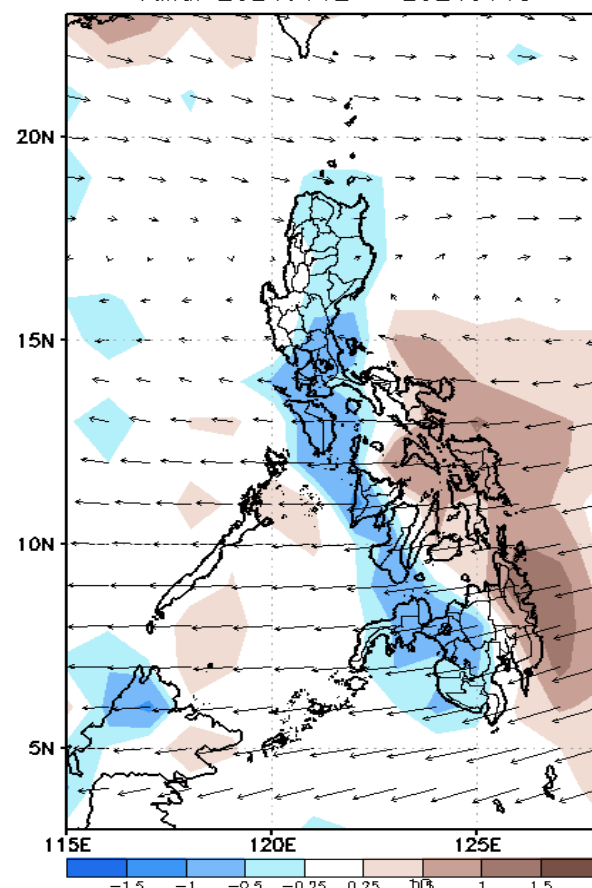
GEFS Week-1 Forecasts: Wind Forecast

Week 1: January 12-18, 2024

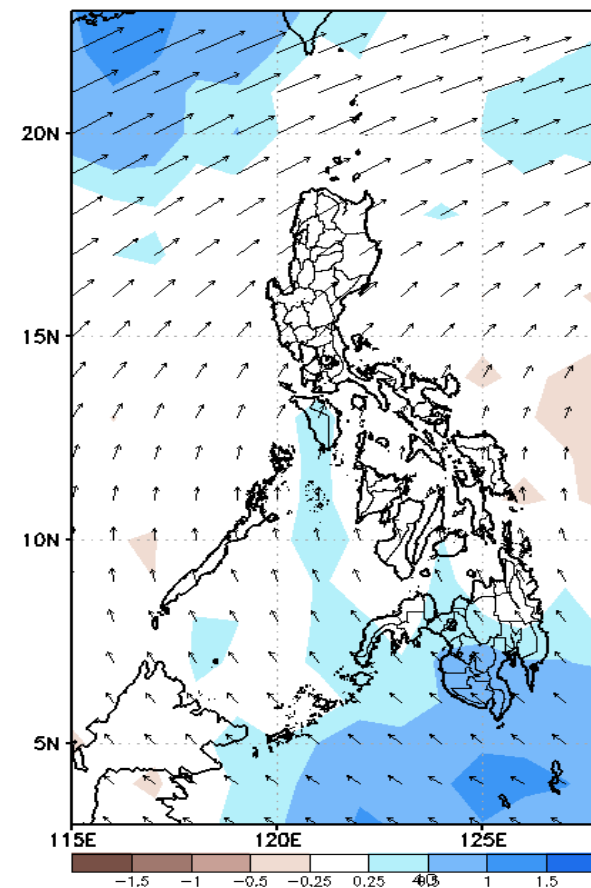
GEFS Week-1 850-hPa Divergence and Wind Anom
Valid: 20240112 - 20240118



GEFS Week-1 700-hPa Divergence and Wind Anom
Valid: 20240112 - 20240118

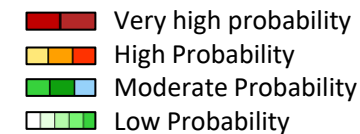


GEFS Week-1 200-hPa Divergence and Wind Anom
Valid: 20240112 - 20240118



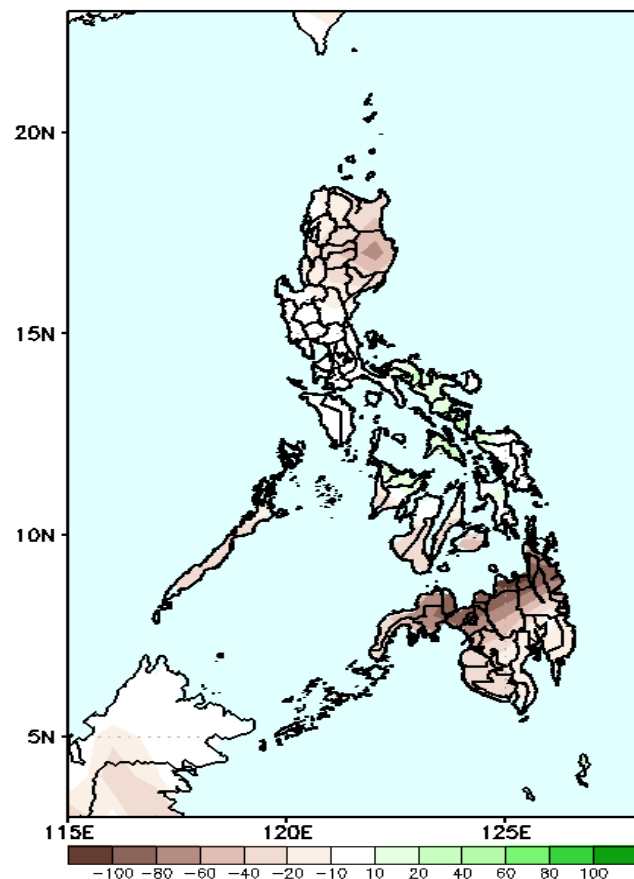
Northeast Monsoon affecting eastern sections of the country.

Precipitation Anomaly and Exceedance Probability > 25/50 mm



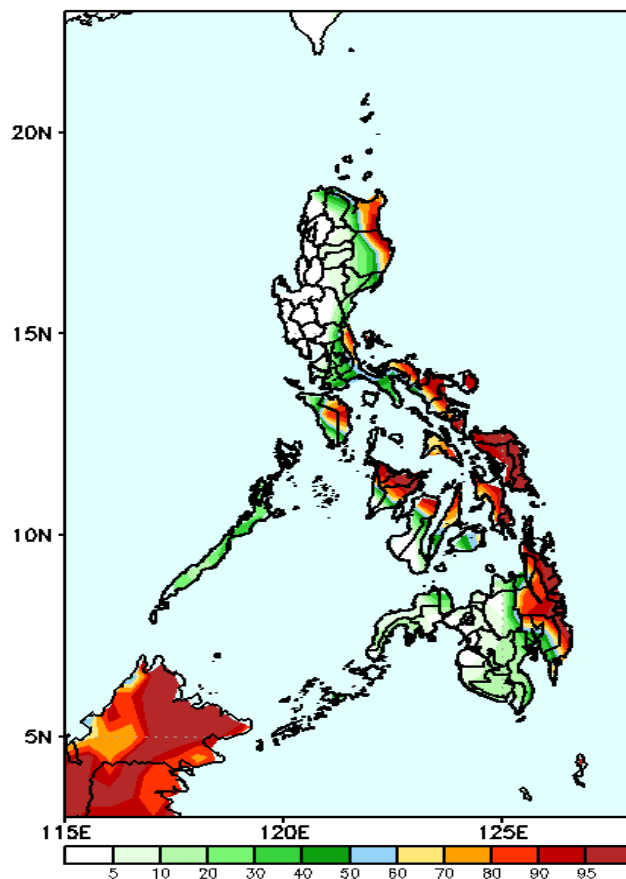
Week 1: January 12-18, 2024

GEFS Week-1 Precip Anomaly
Valid: 20240112 - 20240118



Rainfall deficit of 40-60mm in most parts of the country. Moreover, a deficit of 80-100mm is forecasted in Northern Mindanao.

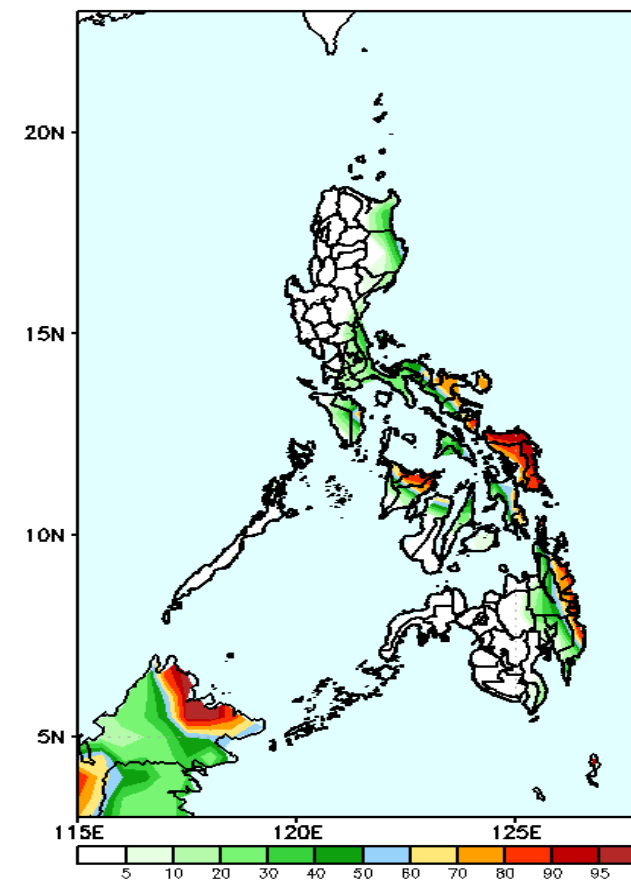
GEFS Week-1 Exceedance Prob. > 25mm
Valid: 20240112 - 20240118



Probability to Exceed 25mm

- High to very high over the eastern portion of Isabela, and Cagayan, most of Bicol Region, Eastern Visayas, northern portion of Western Visayas, and Eastern Mindanao;
- Moderate to high over Apayao, Quezon, most of Central Visayas, and Mindoro Provinces;
- Low over the rest of the country.

GEFS Week-1 Exceedance Prob. > 50mm
Valid: 20240112 - 20240118

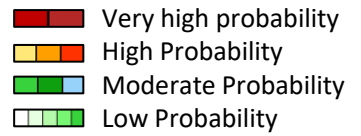


Probability to Exceed 50mm

- Moderate to high over Aklan, Capiz, and the eastern portion of Bicol Region, Eastern Visayas, and Mindanao;
- Low to moderate over the rest of Bicol Region, and Eastern Visayas;
- Low over the rest of the country.

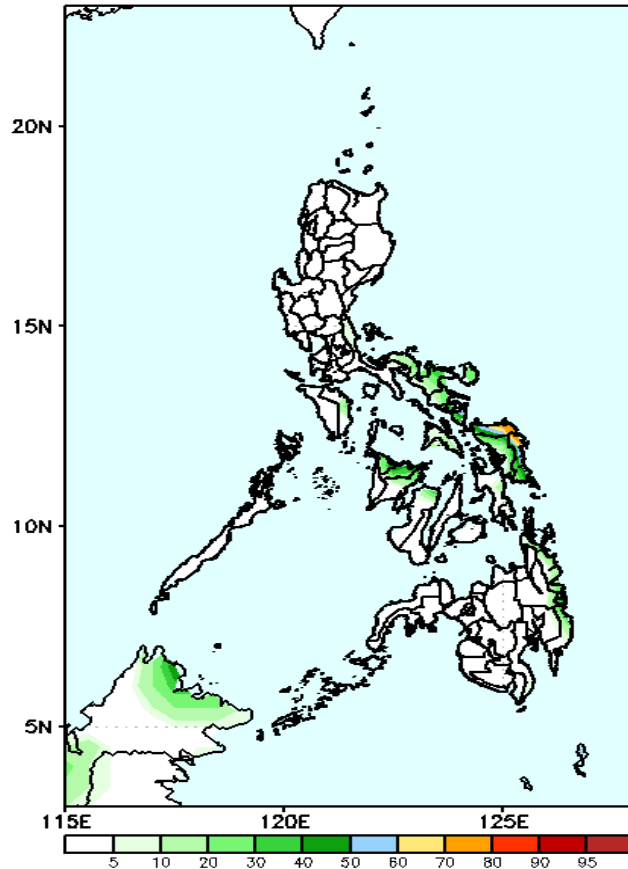


Exceedance Probability > 100/150/200 mm



Week 1: January 12-18, 2024

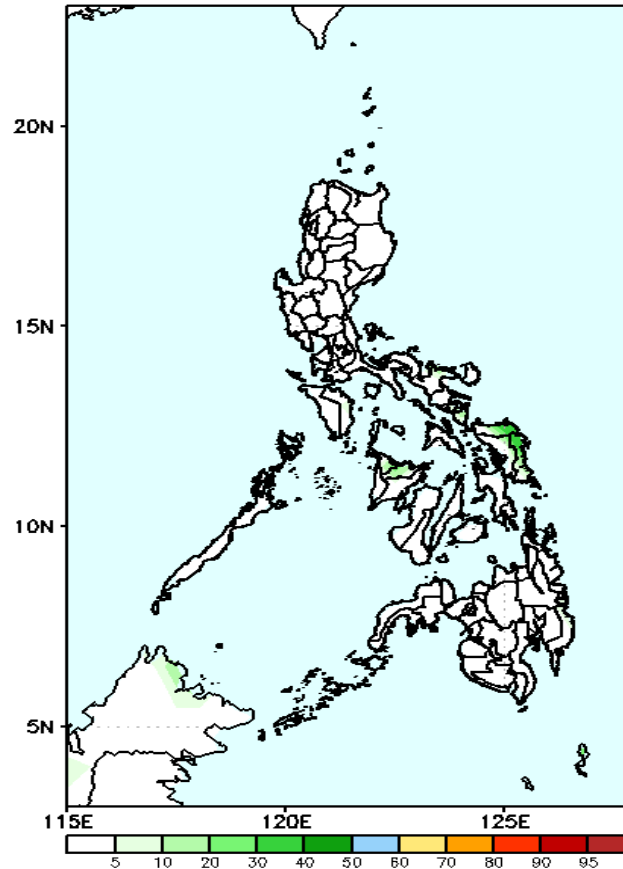
GEFS Week-1 Exceedance Prob. > 100mm
Valid: 20240112 - 20240118



Probability to Exceed 100mm

- Moderate to high over Northern and Eastern Samar;
- Low over the rest of the country.

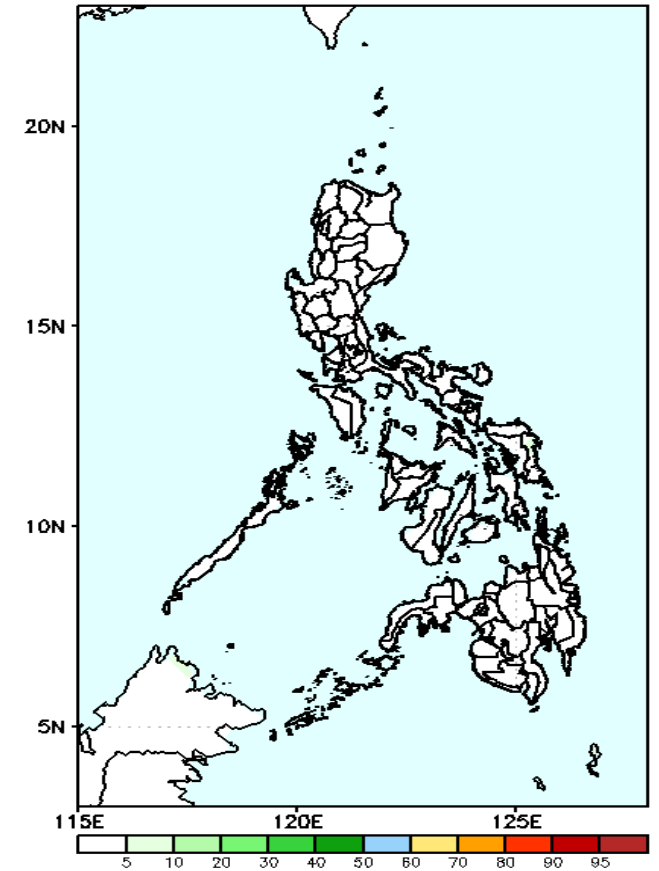
GEFS Week-1 Exceedance Prob. > 150mm
Valid: 20240112 - 20240118



Probability to Exceed 150mm

- Low across the country.

GEFS Week-1 Exceedance Prob. > 200mm
Valid: 20240112 - 20240118



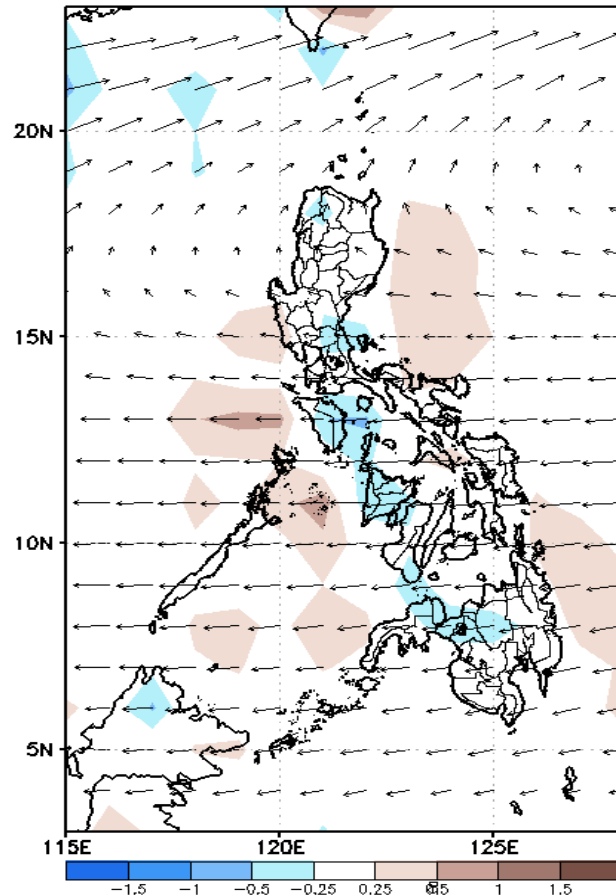
Probability to Exceed 200mm

- Low across the country.

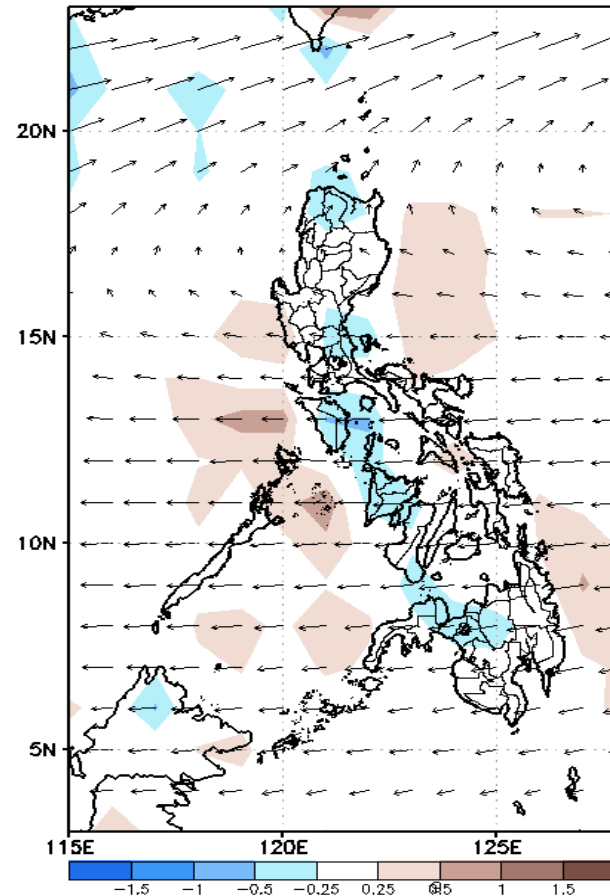
GEFS Week-2 Forecasts: Wind Forecast

Week 2: January 19-25, 2024

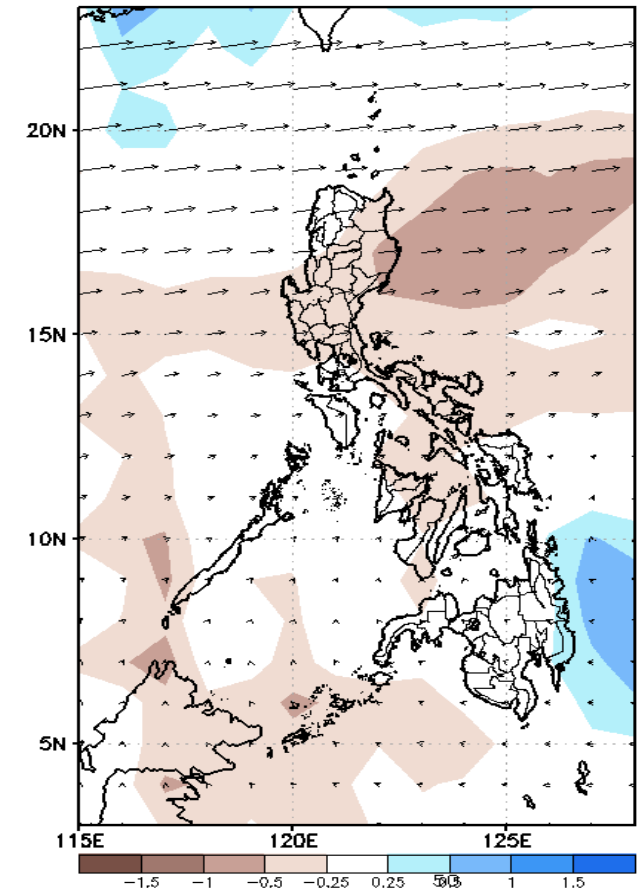
GEFS Week-1 850-hPa Divergence and Wind Anom
Valid: 20231227 - 20240102



GEFS Week-1 700-hPa Divergence and Wind Anom
Valid: 20231227 - 20240102

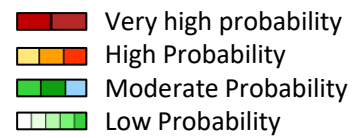


GEFS Week-1 200-hPa Divergence and Wind Anom
Valid: 20231227 - 20240102



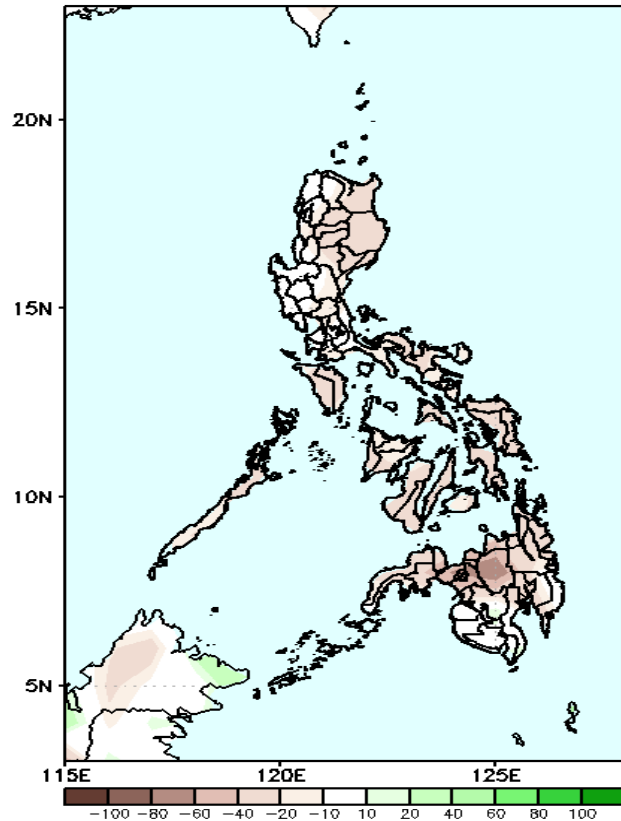
Northeast Monsoon affecting Northern Luzon; Easterlies affecting most parts of the country.

Precipitation Anomaly and Exceedance Probability > 25/50 mm



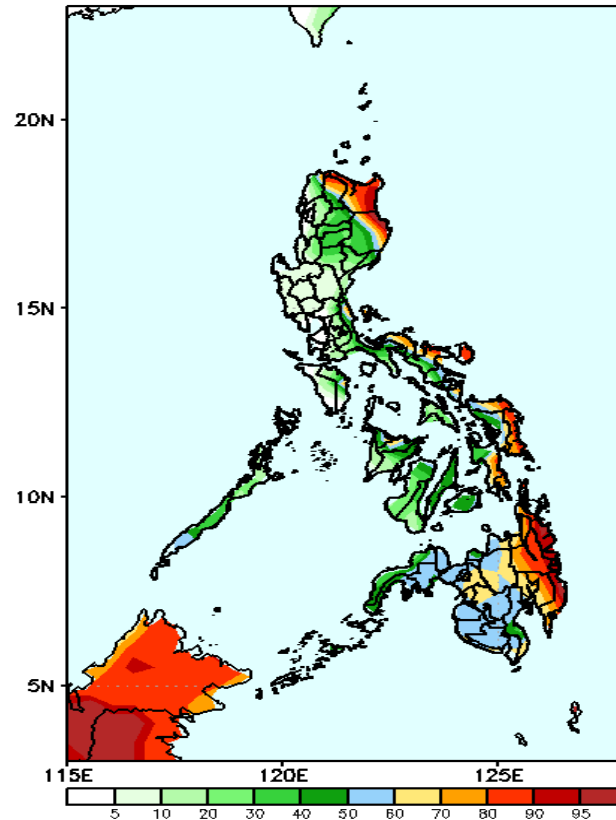
Week 2: January 19-25, 2024

GEFS Week-2 Precip Anomaly
Valid: 20240119 - 20240125



Rainfall deficit of 20-60mm in most parts of the country.

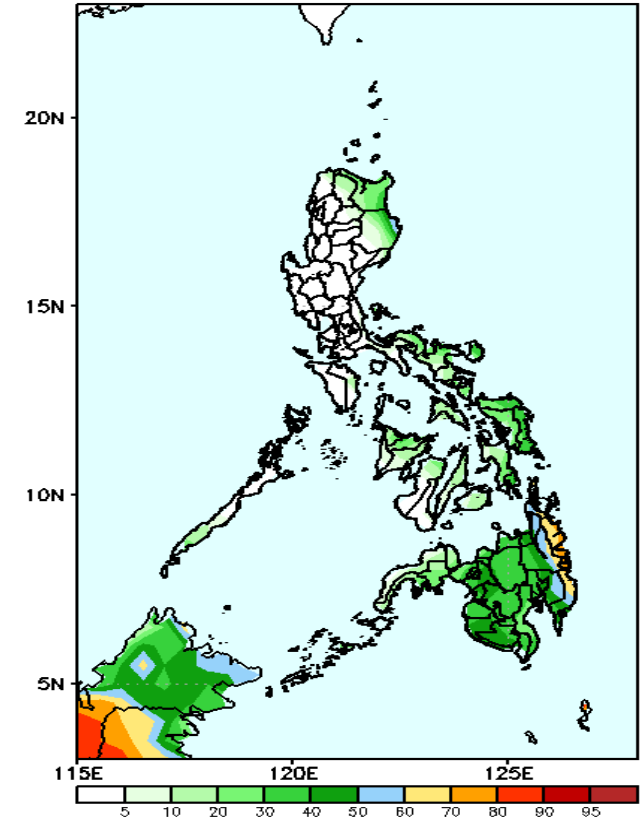
GEFS Week-2 Exceedance Prob. > 25mm
Valid: 20240119 - 20240125



Probability to Exceed 25mm

- Moderate to high over portions of Apayao, Cagayan and Isabela, Bicol Region, Eastern Visayas, Aklan, Capiz, Southern Palawan, and most of Mindanao;
- Low to moderate over the rest of the country.

GEFS Week-2 Exceedance Prob. > 50mm
Valid: 20240119 - 20240125



Probability to Exceed 50mm

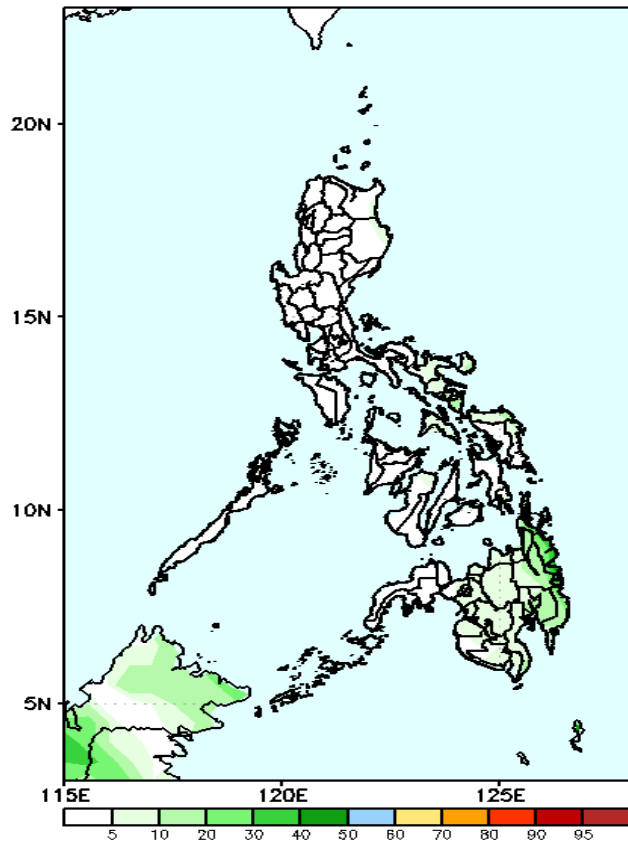
- Moderate to high over the Eastern section of Mindanao;
- Low over the rest of the country.

Exceedance Probability > 100/150/200 mm

Week 2: January 19-25, 2024

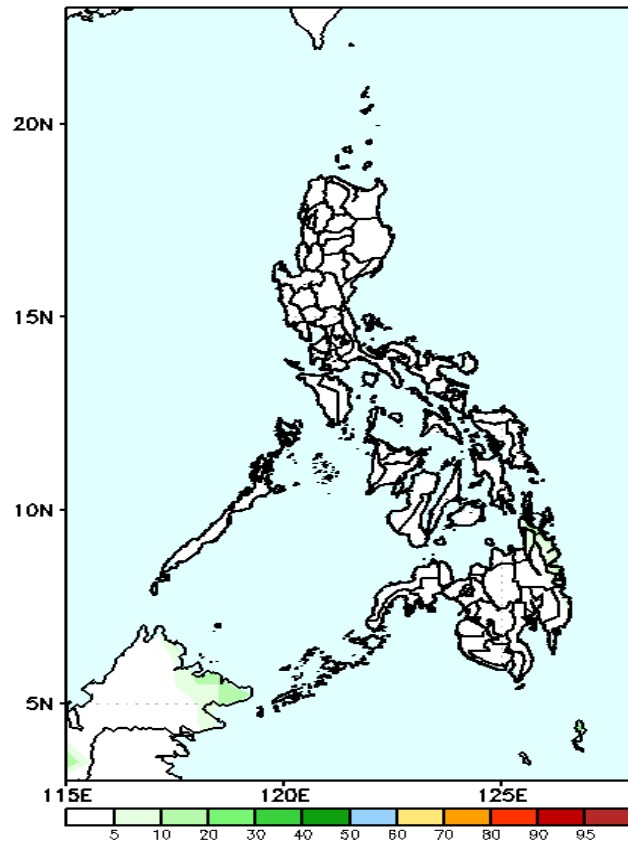
- Very high probability
- High Probability
- Moderate Probability
- Low Probability

GEFS Week-2 Exceedance Prob. > 100mm
Valid: 20240119 - 20240125



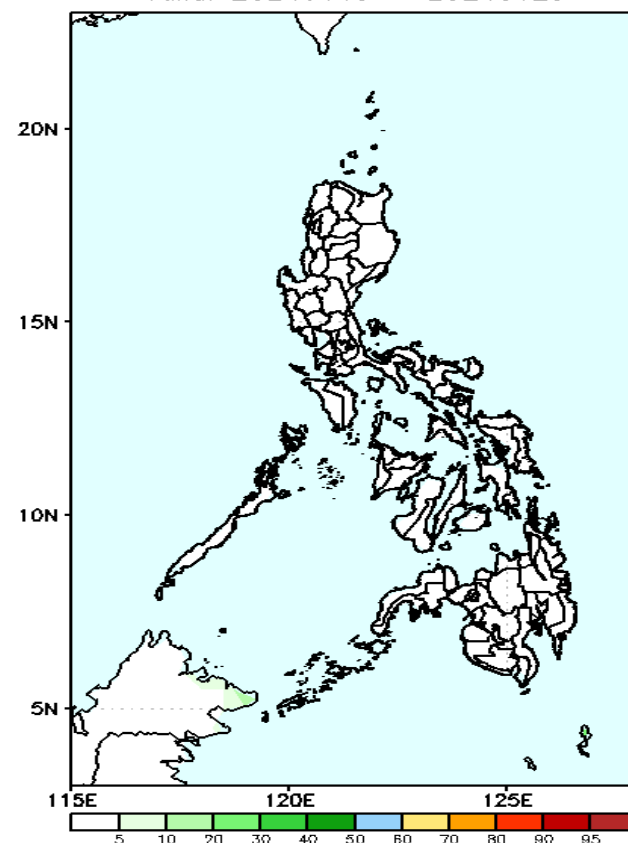
Probability to Exceed 100mm
• Low across the country.

GEFS Week-2 Exceedance Prob. > 150mm
Valid: 20240119 - 20240125



Probability to Exceed 150mm
• Low across the country.

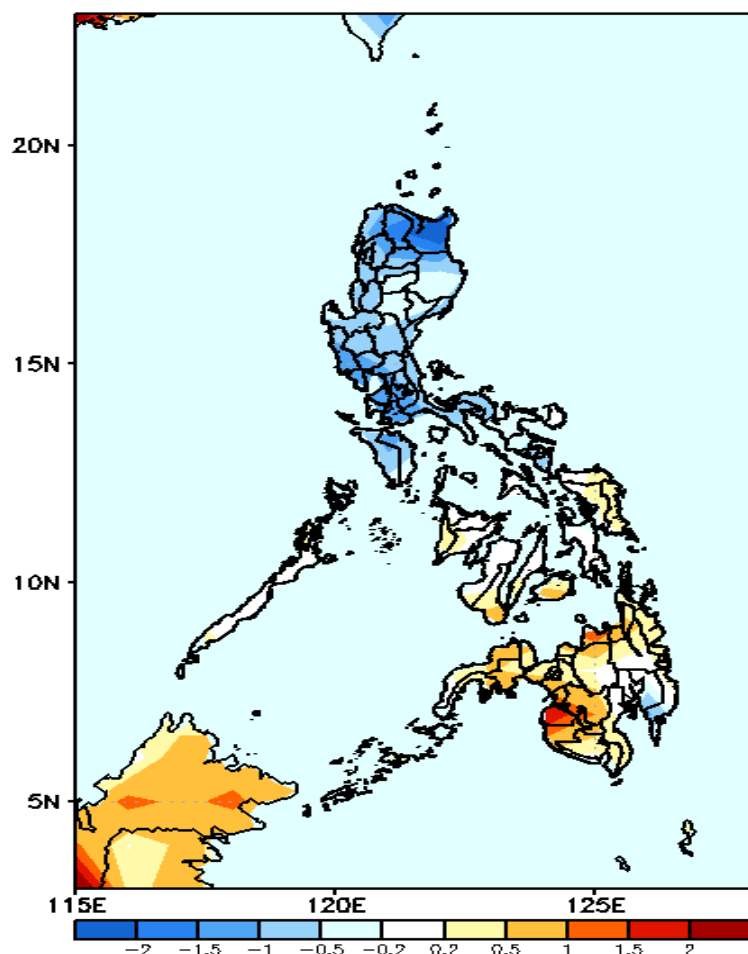
GEFS Week-2 Exceedance Prob. > 200mm
Valid: 20240119 - 20240125



Probability to Exceed 200mm
• Low across the country.

GEFS Week-1 & 2 Forecasts: T2m Anomaly

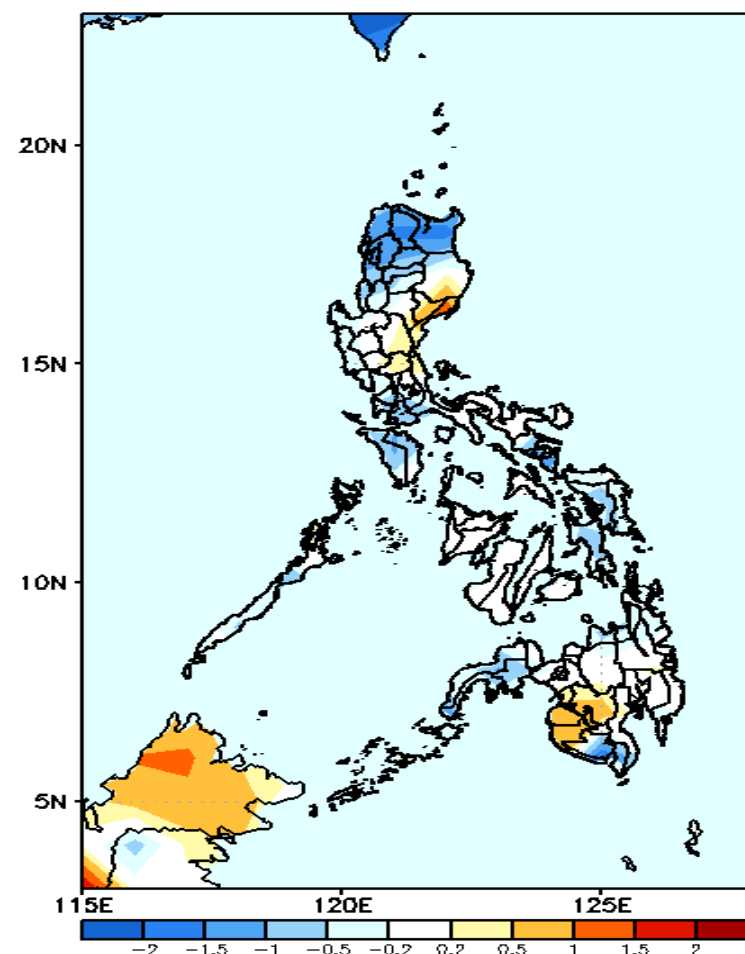
GEFS Week-1 T2m Anomaly
Valid: 20240112 – 20240118



2m Temperature Week 1: January 12-18, 2024

Near to cooler than average surface air temperature average will likely be experienced in most parts of Luzon while average to warmer than average surface air temperature will likely be experienced in most parts of Visayas and Mindanao.

GEFS Week-2 T2m Anomaly
Valid: 20240119 – 20240125



2m Temperature Week 1: January 19-25, 2024

Near to cooler than average surface air temperature average will likely be experienced in most parts of the country except in some areas in eastern Luzon and western Mindanao where slightly warmer to warmer than average temperature is expected.