



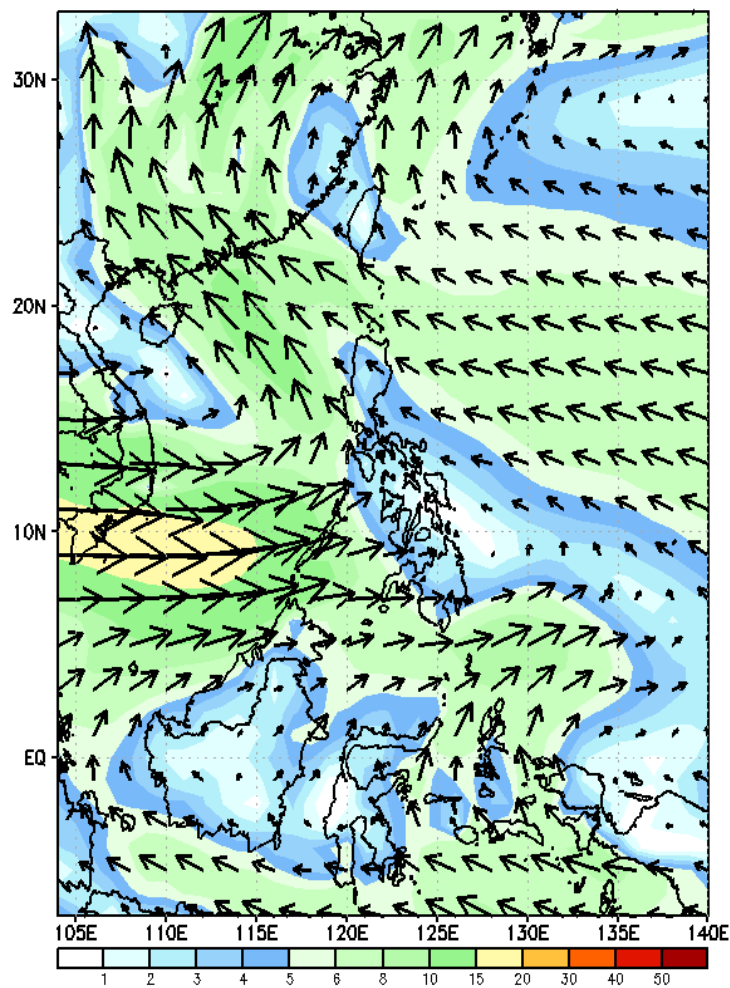
Week 1 & Week 2 Forecast for the Philippines using GEFS Model



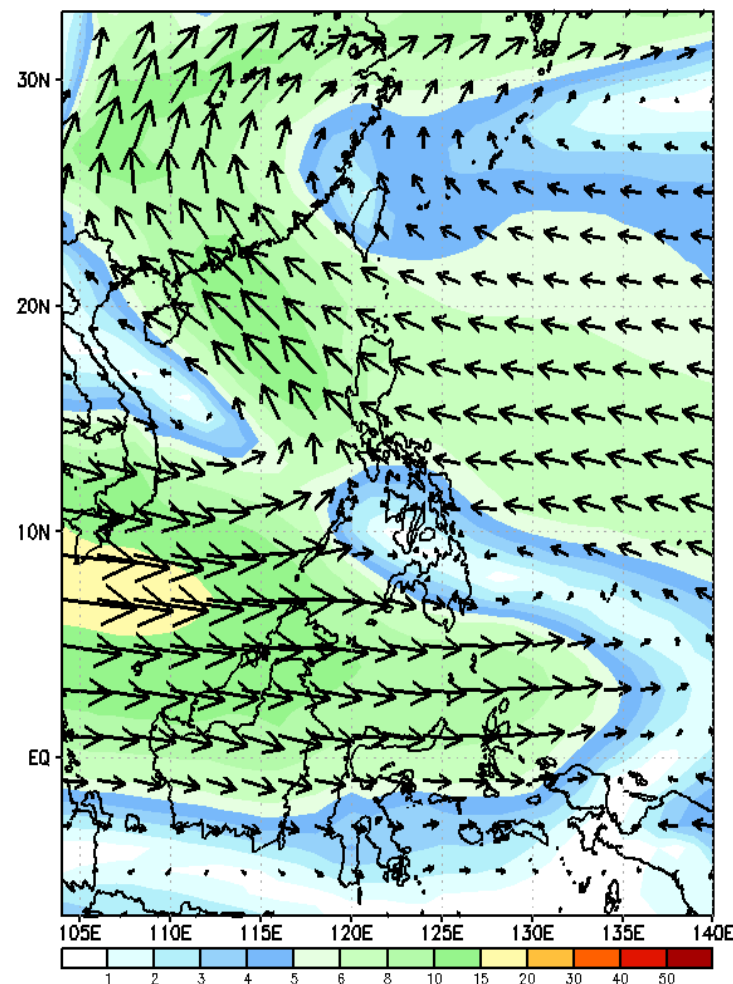
GEFS Week-1 Wind Forecasts:

Week 1: Jul 12-18, 2024

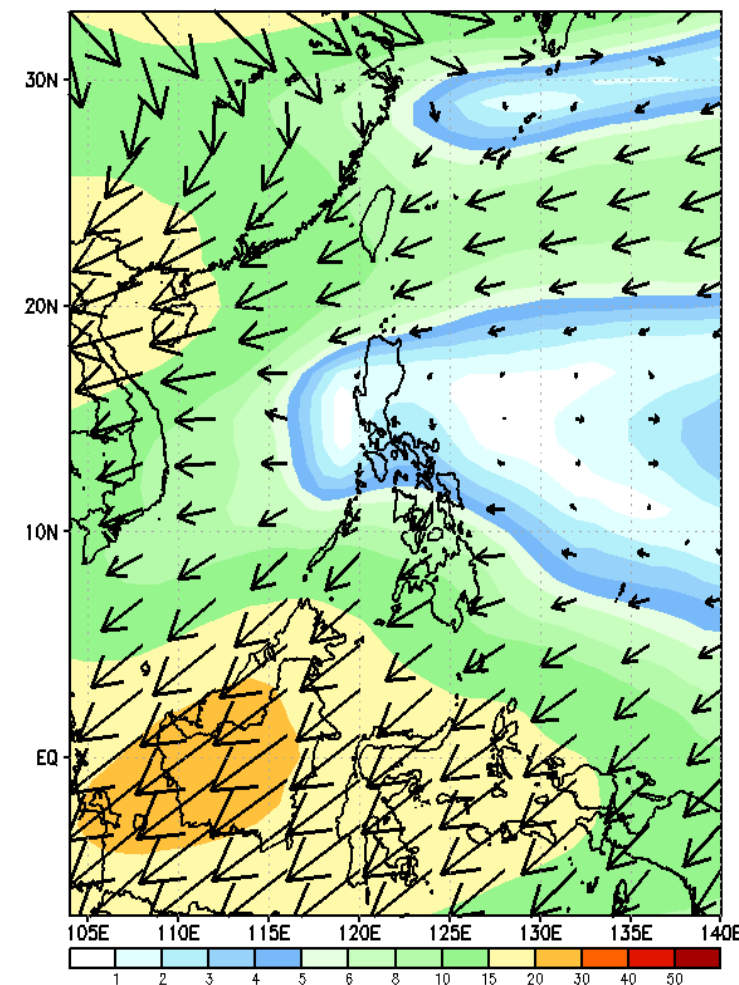
GEFS Week-1 850-hPa Wind Total
Valid: 20240712 - 20240718



GEFS Week-1 700-hPa Wind Total
Valid: 20240712 - 20240718

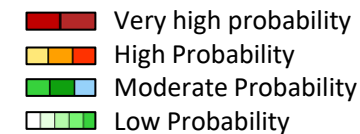


GEFS Week-1 200-hPa Wind Total
Valid: 20240712 - 20240718



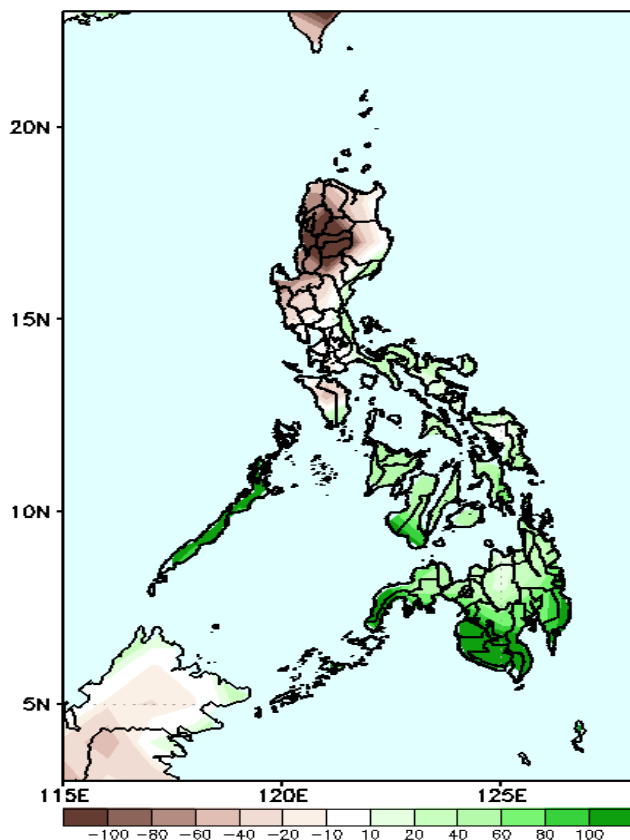
Southwest Monsoon affecting the western sections of the country; Easterlies affecting the rest of the country during the forecast period

Precipitation Anomaly and Exceedance Probability > 25/50 mm



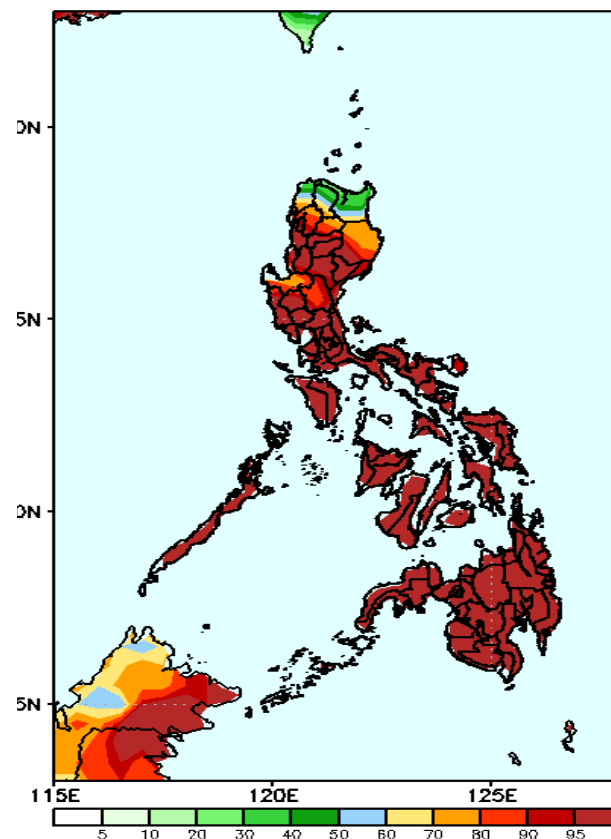
Week 1: Jul 12-18, 2024

GEFS Week-1 Precip Anomaly
Valid: 20240712 - 20240718



Rainfall deficit of more than 100mm in most parts of CAR and Ilocos Region; 20-60mm over the rest of Northern and Central Luzon, while 40-100mm increase of rainfall will be likely for the rest of the country.

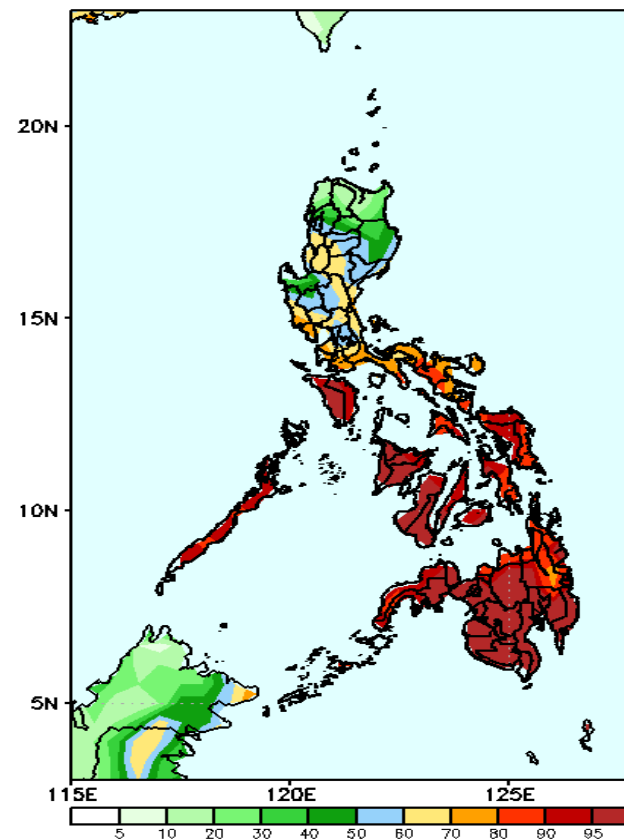
GEFS Week-1 Exceedance Prob. > 25mm
Valid: 20240712 - 20240718



Probability to Exceed 25mm

- High to very high over most parts of the country;
- Moderate to high over the northern portion of Ilocos Norte, Apayao, and Cagayan.

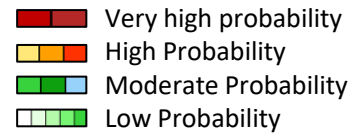
GEFS Week-1 Exceedance Prob. > 50mm
Valid: 20240712 - 20240718



Probability to Exceed 50mm

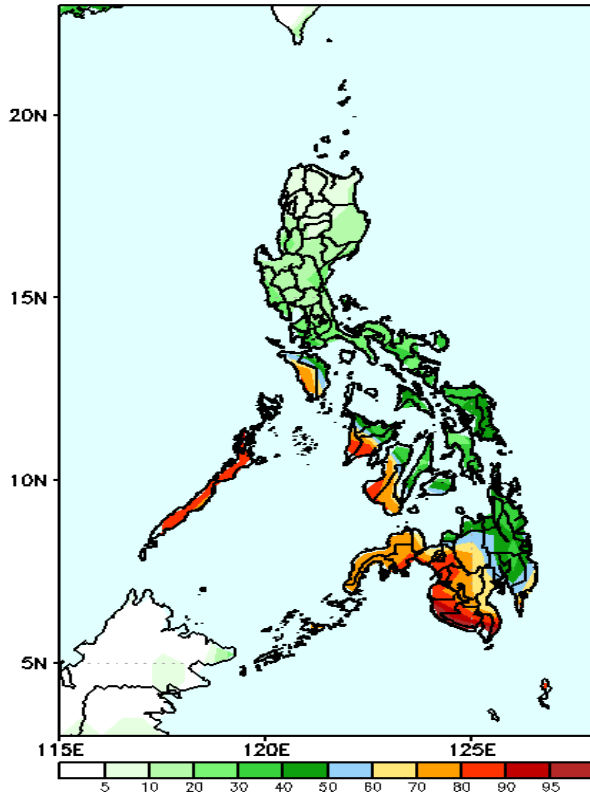
- High to very high over MIMAROPA, Visayas and Mindanao;
- Moderate to high over CAR, La Union, Nueva Vizcaya, Central Luzon, NCR and the rest of Southern Luzon;
- Low to moderate over the rest of Luzon.

Exceedance Probability > 100/150/200 mm



Week 1: Jul 12-18, 2024

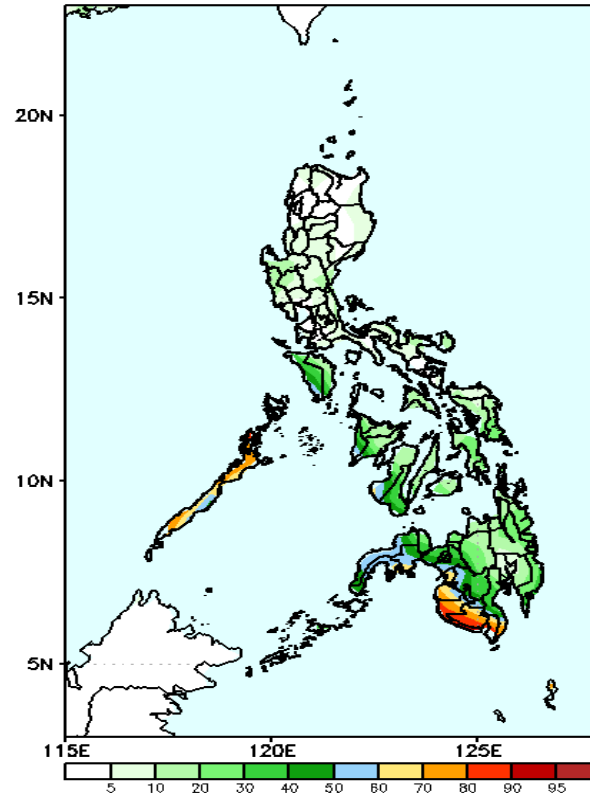
GEFS Week-1 Exceedance Prob. > 100mm
Valid: 20240712 - 20240718



Probability to Exceed 100mm

- Moderate to high over MIMAROPA, Western Visayas, Negros Region, most of Western and Central Mindanao and Davao Region;
- Low to moderate over the rest of the country.

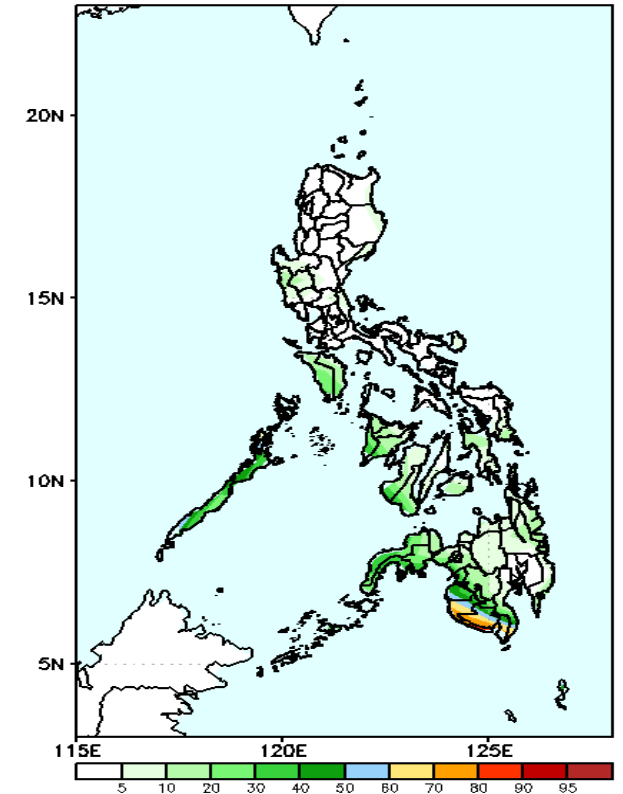
GEFS Week-1 Exceedance Prob. > 150mm
Valid: 20240712 - 20240718



Probability to Exceed 150mm

- Moderate to high over Palawan, Maguindanao, Sultan Kudarat, South Cotabato and Sarangani;
- Low to moderate over the rest of the country

GEFS Week-1 Exceedance Prob. > 200mm
Valid: 20240712 - 20240718



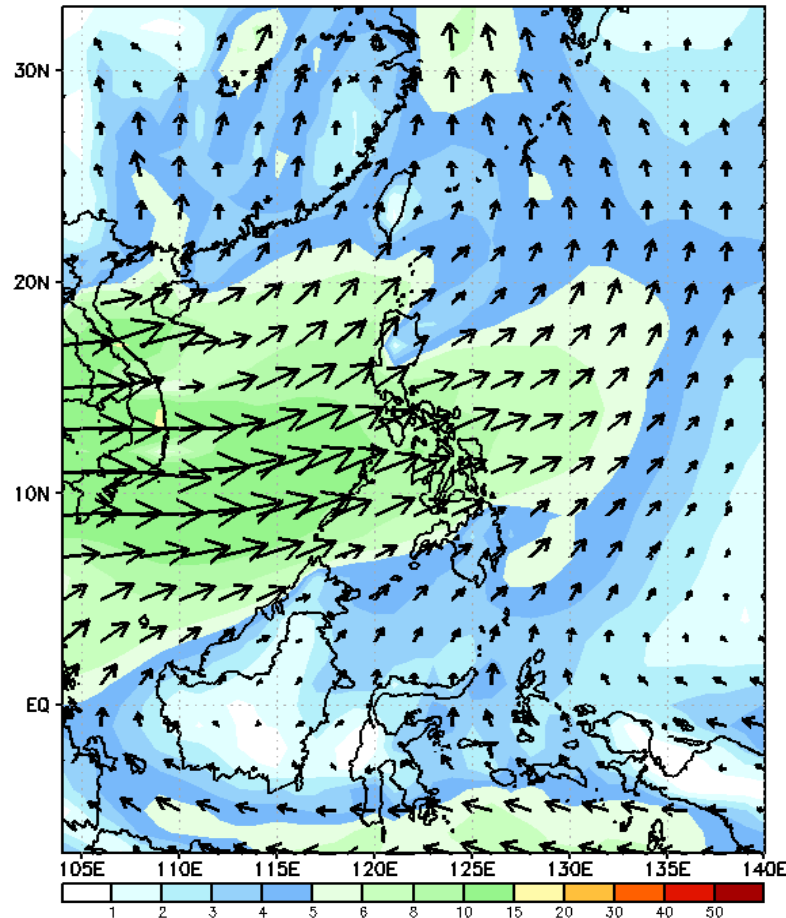
Probability to Exceed 200mm

- Moderate to high over Sultan Kudarat, South Cotabato;
- Low over the rest of the country.

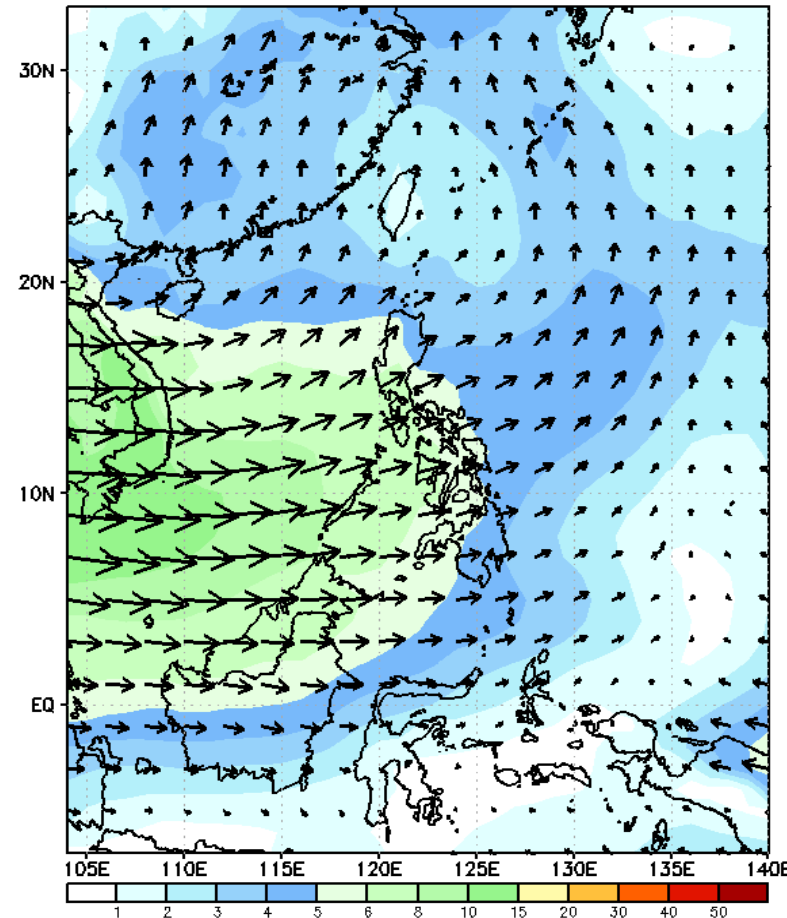
GEFS Week-2 Wind Forecasts:

Week 2: Jul 19-25, 2024

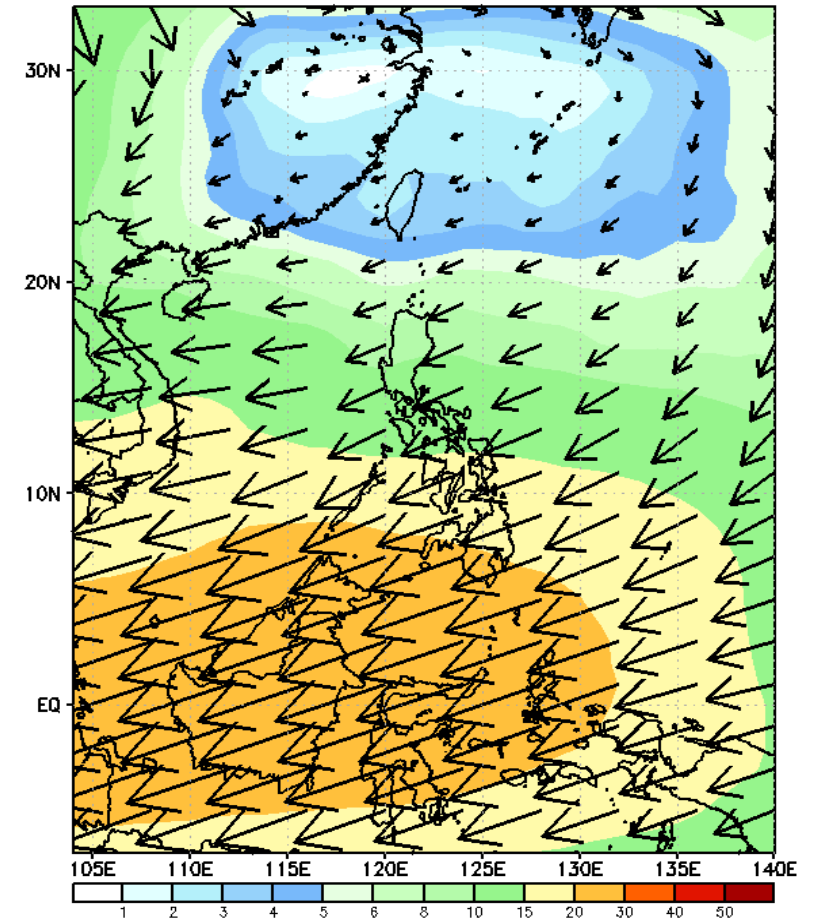
GEFS Week-2 850-hPa Wind Total
Valid: 20240719 - 20240725



GEFS Week-2 700-hPa Wind Total
Valid: 20240719 - 20240725



GEFS Week-2 200-hPa Wind Total
Valid: 20240719 - 20240725



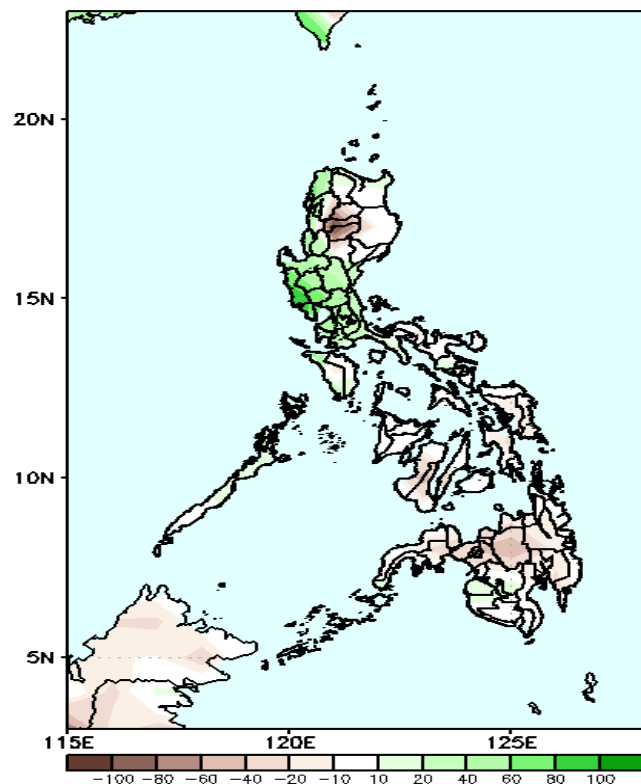
Southwest Monsoon affecting most parts of the country during the forecast period

Precipitation Anomaly and Exceedance Probability > 25/50 mm



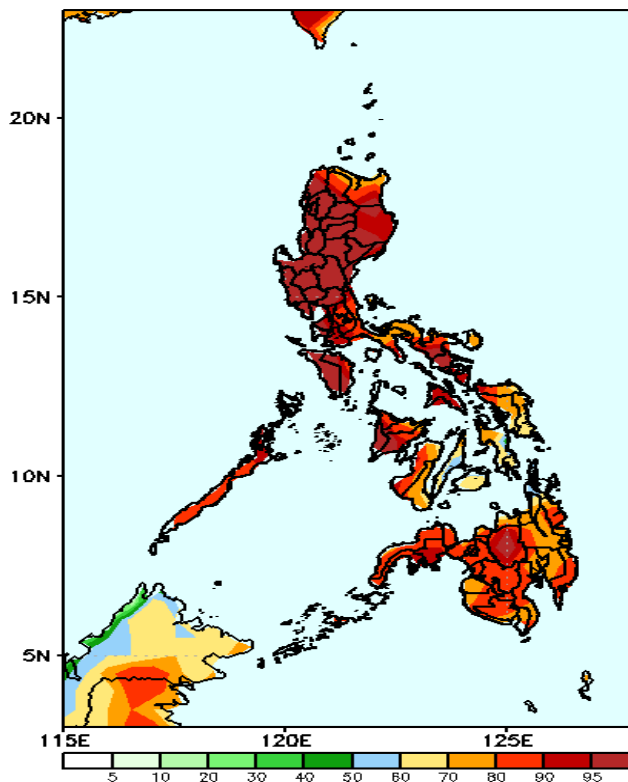
Week 2: Jul 19-25, 2024

GEFS Week-2 Precip. Anomaly
Valid: 20240719 - 20240725



Rainfall deficit of 20-50mm in most parts of the country except in Ilocos Region, Central & Southern Luzon where 20-60mm increase of rainfall is expected.

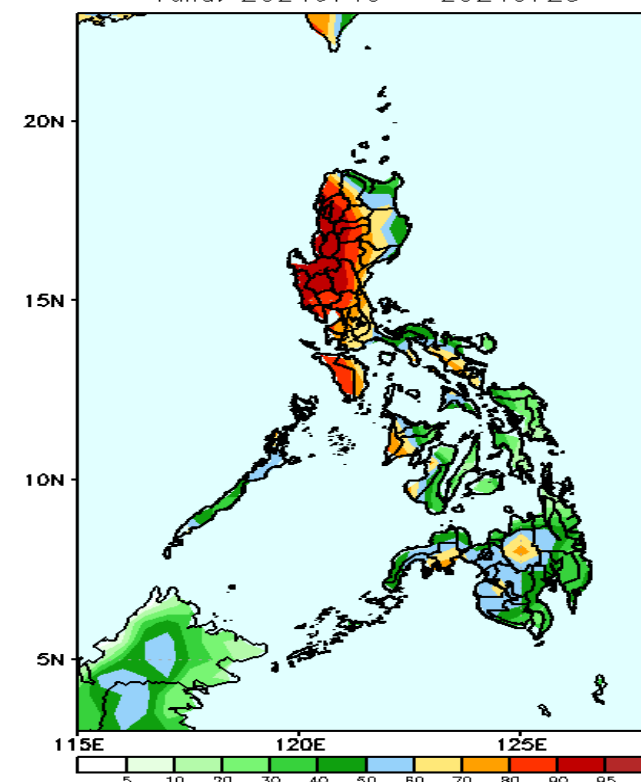
GEFS Week-2 Exceedance Prob. > 25mm
Valid: 20240719 - 20240725



Probability to Exceed 25mm

- High to very high across the country

GEFS Week-2 Exceedance Prob. > 50mm
Valid: 20240719 - 20240725



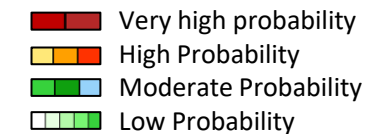
Probability to Exceed 50mm

- High to very high over Ilocos Region, CAR, Nueva Vizcaya, and most of Central Luzon;
- Moderate to high over the rest of Luzon, Western Visayas, Negros Region and most of Mindanao;
- Low to moderate over the rest of Visayas.

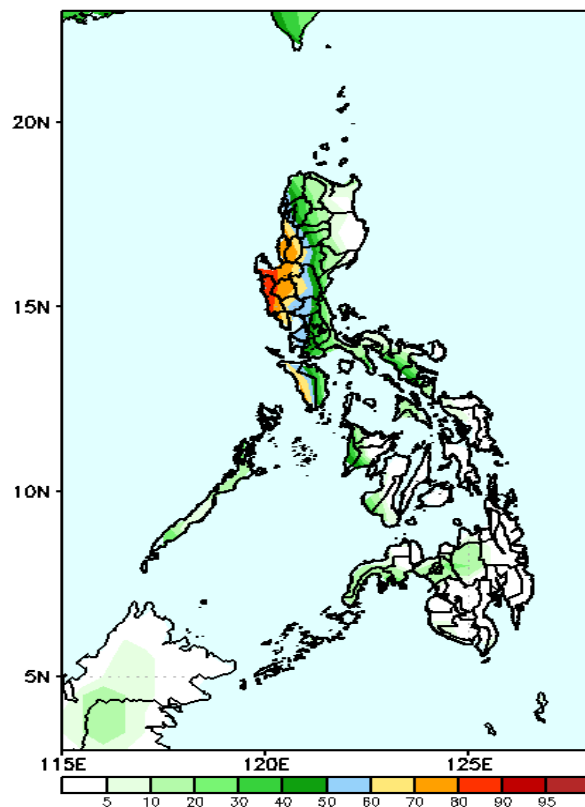


Exceedance Probability > 100/150/200 mm

Week 2: Jul 19-25, 2024



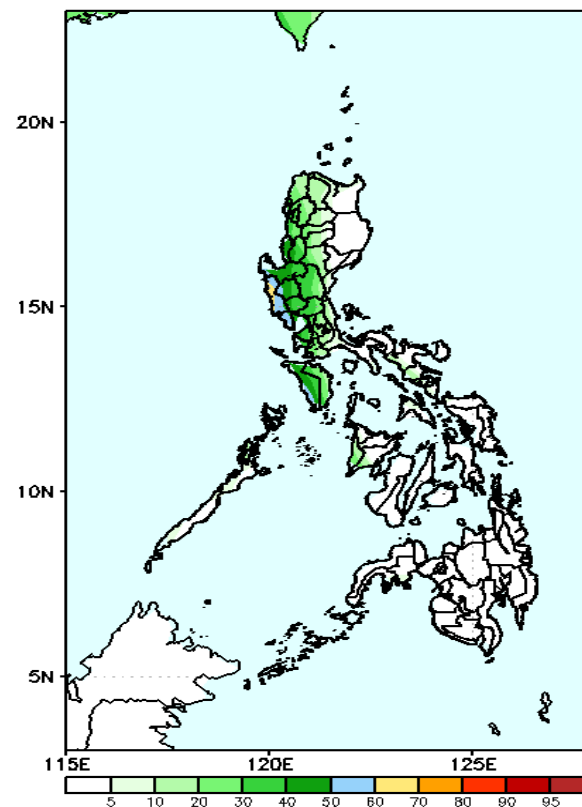
GEFS Week-2 Exceedance Prob. > 100mm
Valid: 20240719 - 20240725



Probability to Exceed 100mm

- Moderate to high over most of Western and Central Luzon;
- Low to moderate over the rest of the country

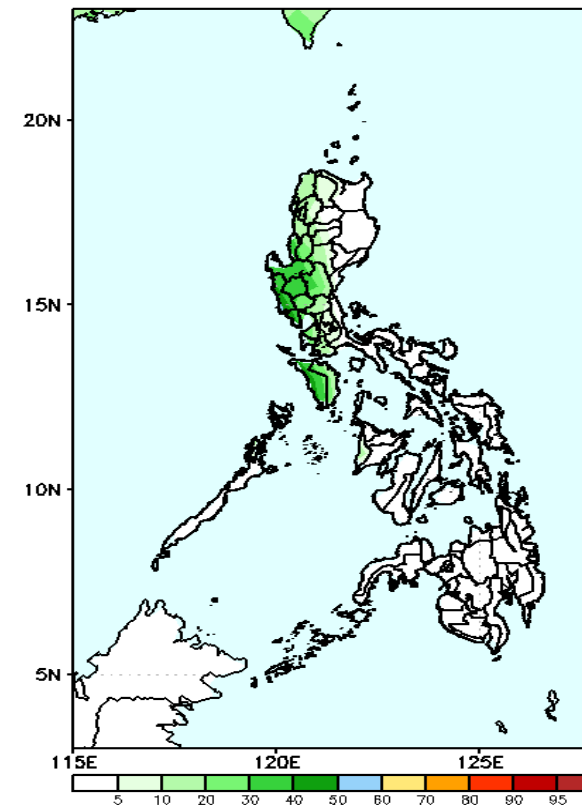
GEFS Week-2 Exceedance Prob. > 150mm
Valid: 20240719 - 20240725



Probability to Exceed 150mm

- Moderate to high over Zambales,
- Low to moderate over the rest of Western Luzon;
- Low over the rest of the country.

GEFS Week-2 Exceedance Prob. > 200mm
Valid: 20240719 - 20240725

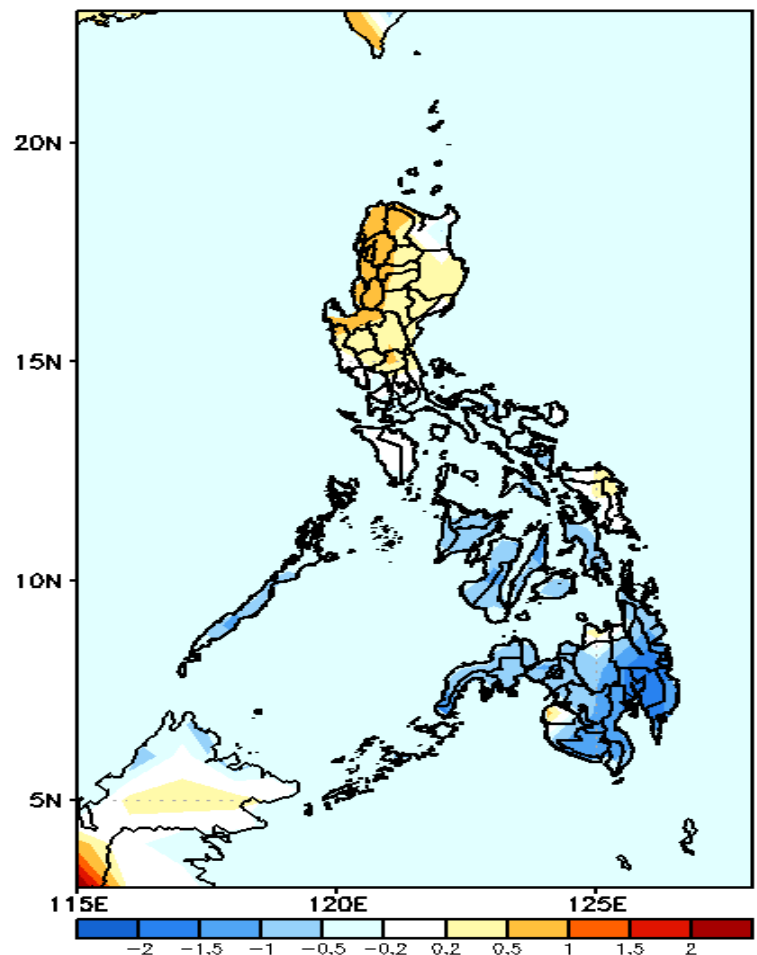


Probability to Exceed 200mm

- Low to moderate over most of Western Luzon;
- Low over the rest of the country.

GEFS Week-1 & 2 Forecasts: T2m Anomaly

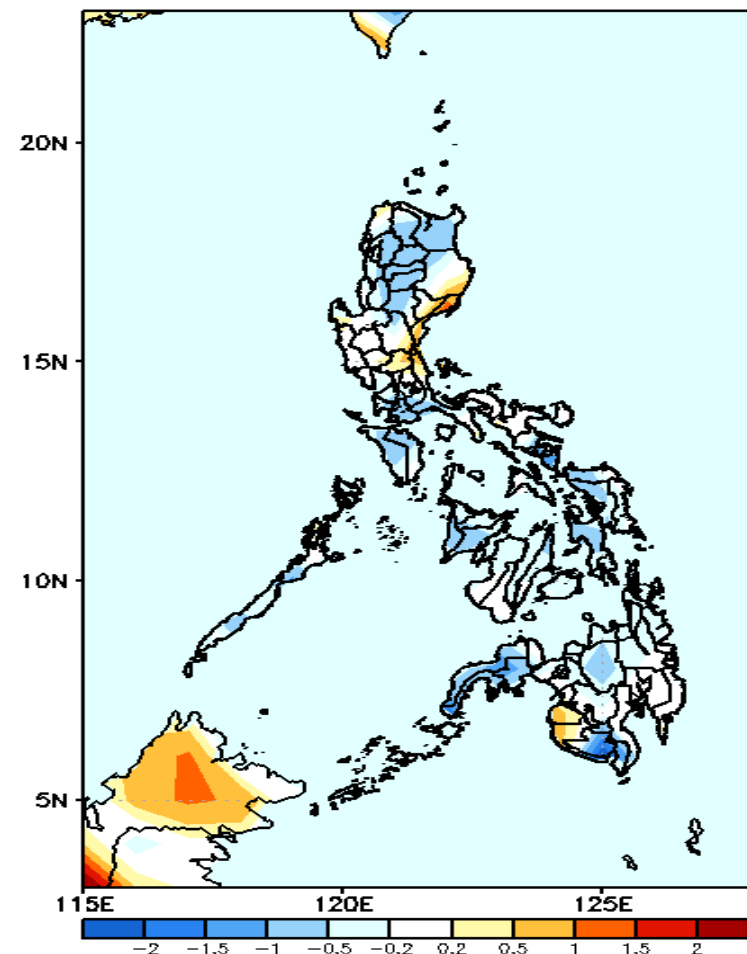
GEFS Week-1 T2m Anomaly
Valid: 20240712 - 20240718



2m Temperature Week 1: Jul 12-18, 2024

Near to slightly warmer than average surface air temperature will likely be experienced in most parts of Luzon and Samar provinces while the rest of the country will likely have slightly cooler to cooler than average surface air temperature.

GEFS Week-2 T2m Anomaly
Valid: 20240719 - 20240725



2m Temperature Week 2: Jul 19-25, 2024

Near to cooler surface air temperature will likely be experienced in most parts of the country except in Aurora and the eastern part of Maguindanao and Sultan Kudarat where near to slightly warmer than average temperature is expected.