

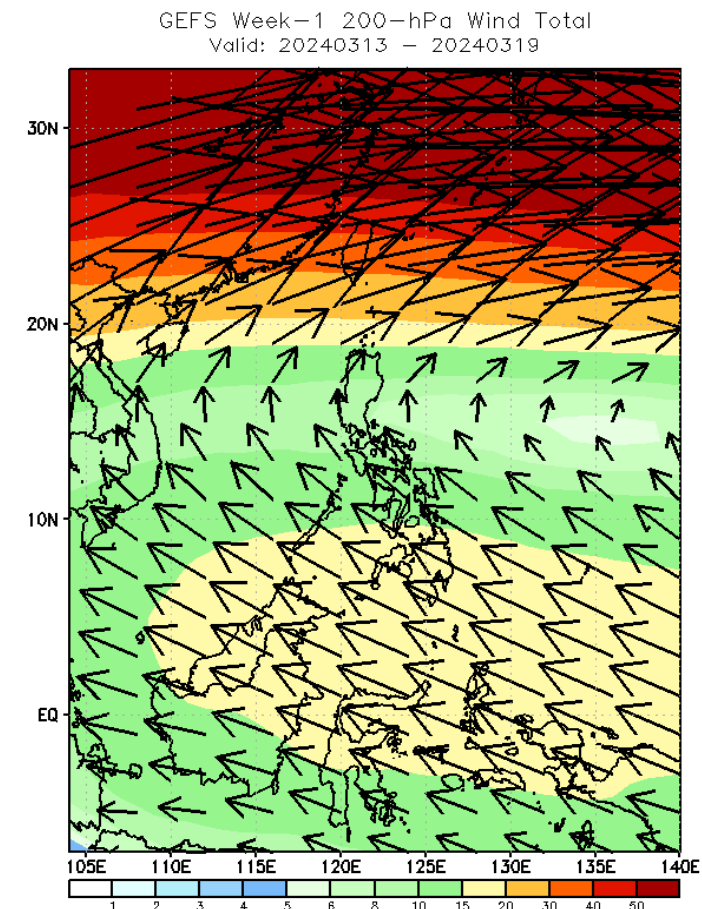
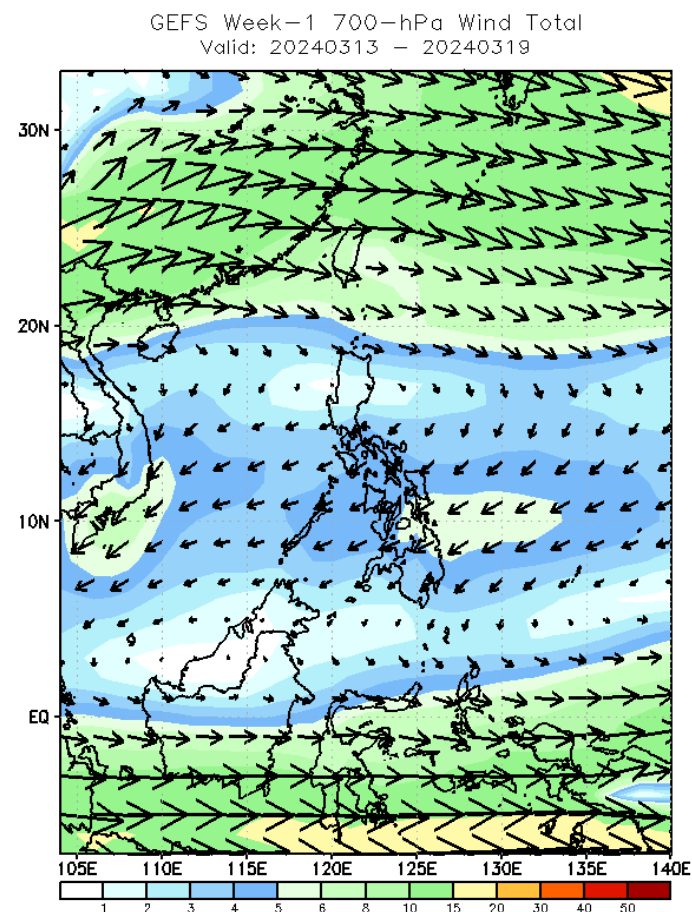
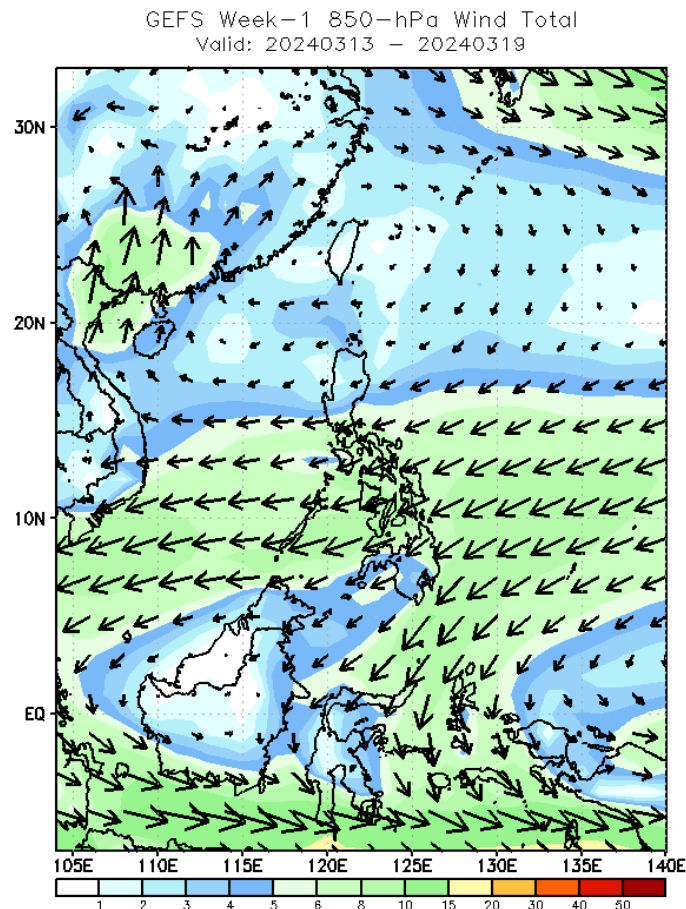


Week 1 & Week 2 Forecast for the Philippines using GEFS Model



GEFS Week-1 Forecasts: Wind Forecast

Week 1: Mar 13-19, 2024



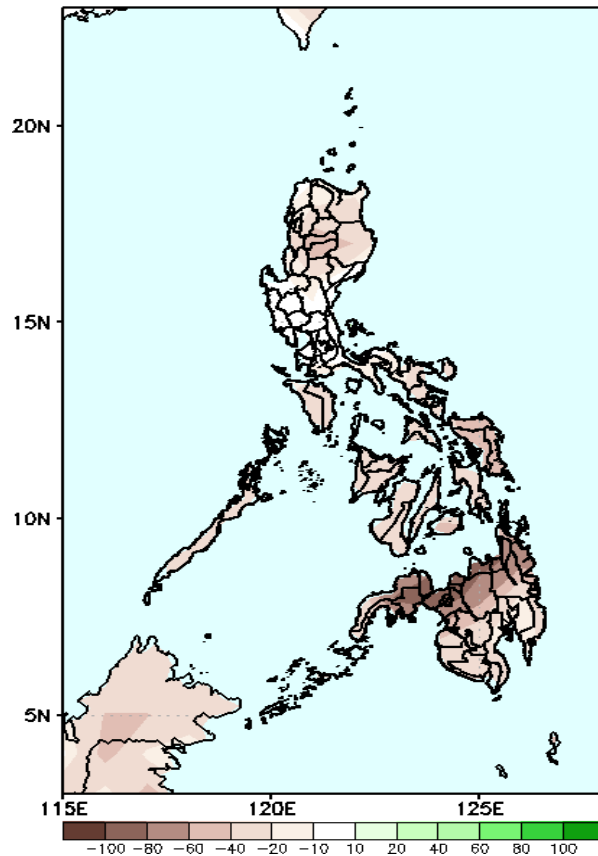
Surges of Northeast Monsoon will still affect Northern Luzon while Easterlies will likely affect the rest of the country.

Precipitation Anomaly and Exceedance Probability > 25/50 mm



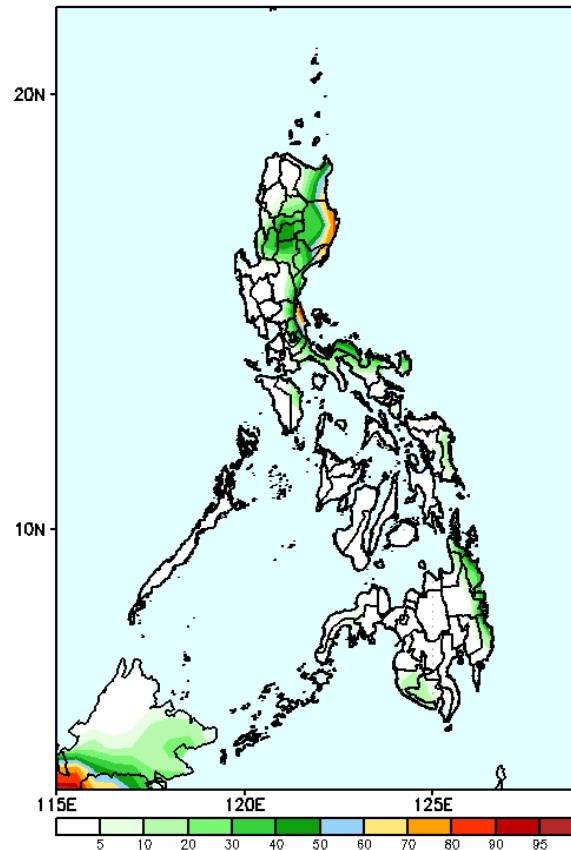
Week 1: Mar 13-19, 2024

GEFS Week-1 Precip. Anomaly
Valid: 20240313 - 20240319



Rainfall deficit of 20-60mm in Luzon and Visayas; 40-100mm in Mindanao.

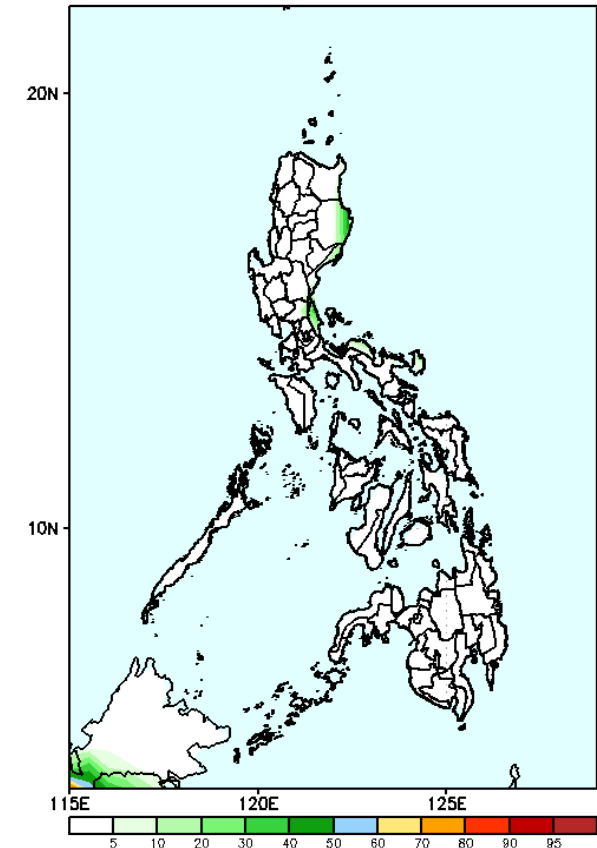
GEFS Week-1 Exceedance Prob. > 25mm
Valid: 20240313 - 20240319



Probability to Exceed 25mm

- Moderate to high over the eastern portions of Cagayan, and Isabela, and northern portion of Aurora and Quezon;
- Low to moderate over the rest of Eastern Luzon;
- Low over the rest of the country.

GEFS Week-1 Exceedance Prob. > 50mm
Valid: 20240313 - 20240319



Probability to Exceed 50mm

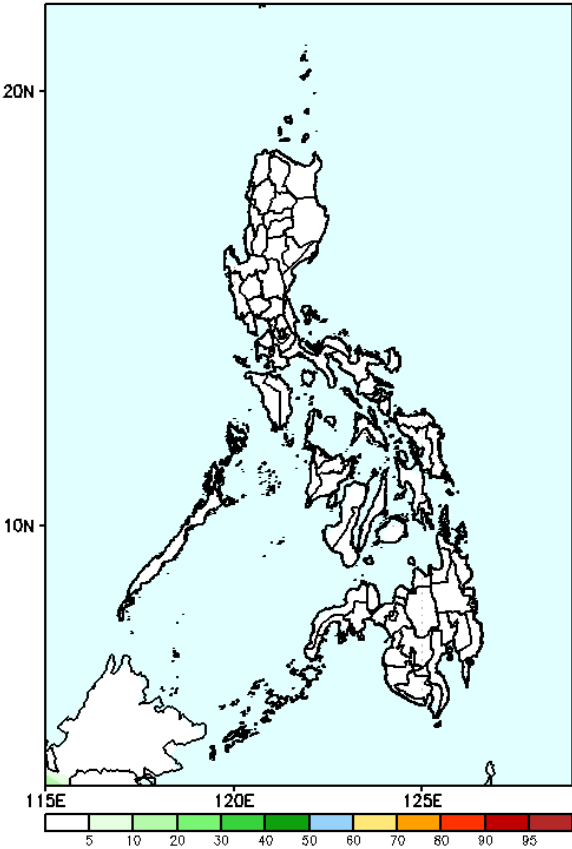
- Low across the country.

Exceedance Probability > 100/150/200 mm

Week 1: Mar 13-19, 2024

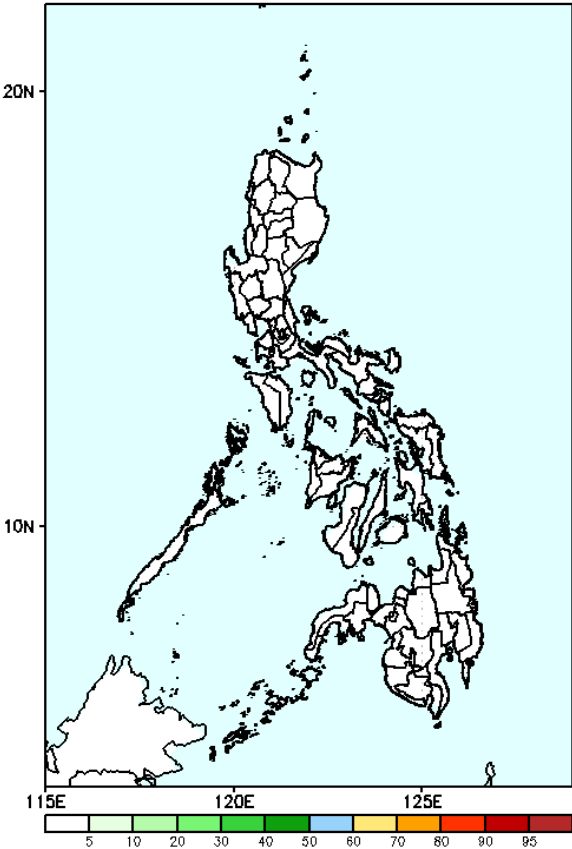
- Very high probability
- High Probability
- Moderate Probability
- Low Probability

GEFS Week-1 Exceedance Prob. > 100mm
Valid: 20240313 – 20240319



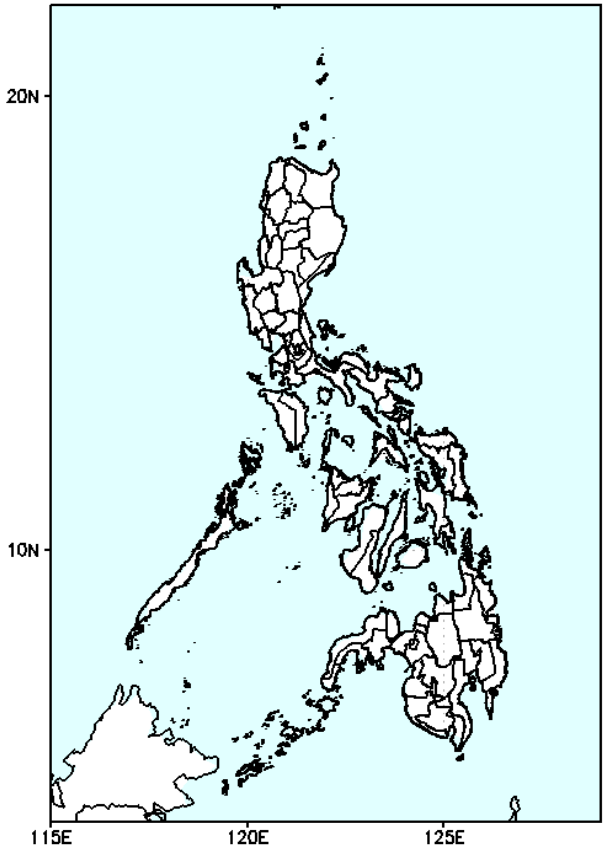
Probability to Exceed 100mm
• Low across the country.

GEFS Week-1 Exceedance Prob. > 150mm
Valid: 20240313 – 20240319



Probability to Exceed 150mm
• Low across the country.

GEFS Week-1 Exceedance Prob. > 200mm
Valid: 20240313 – 20240319

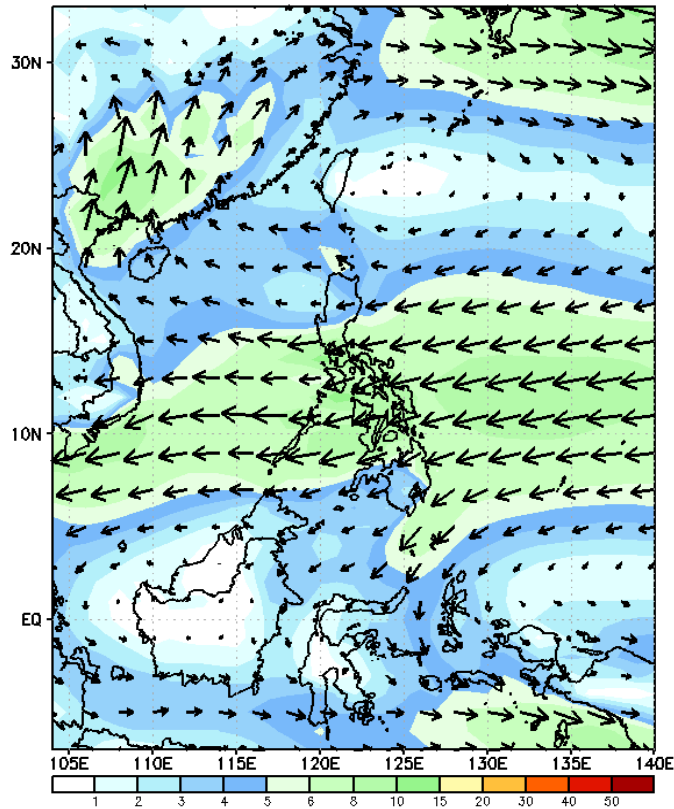


Probability to Exceed 200mm
• Low across the country.

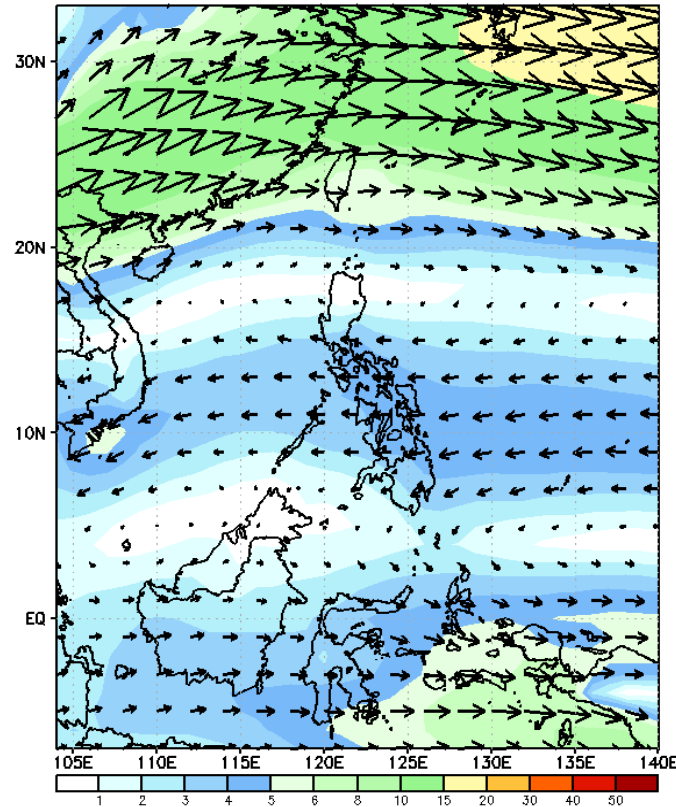
GEFS Week-2 Forecasts: Wind Forecast

Week 2: Mar 20-26, 2024

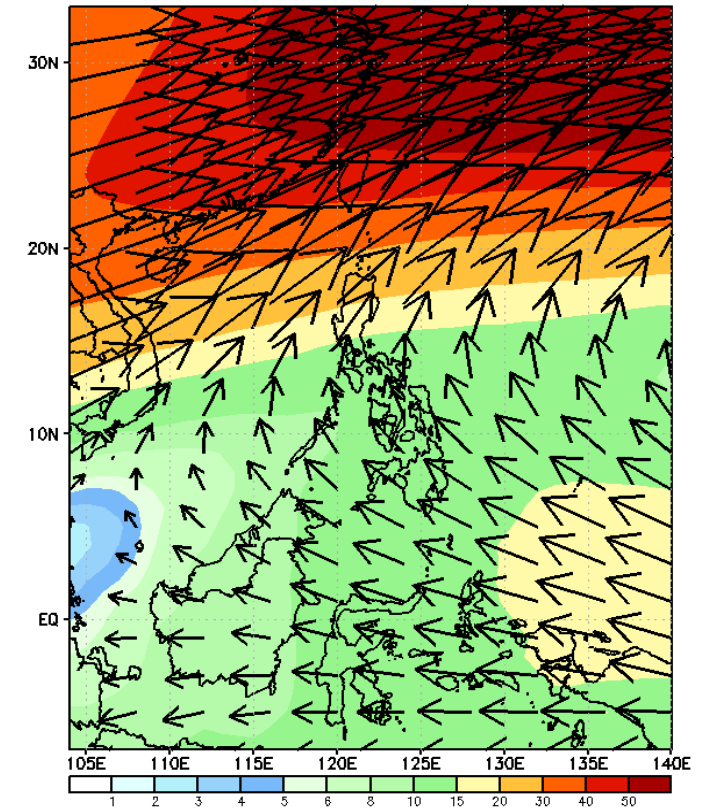
GEFS Week-2 850-hPa Wind Total
Valid: 20240320 - 20240326



GEFS Week-2 700-hPa Wind Total
Valid: 20240320 - 20240326

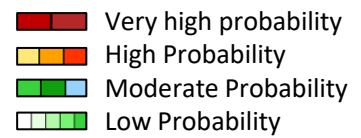


GEFS Week-2 200-hPa Wind Total
Valid: 20240320 - 20240326



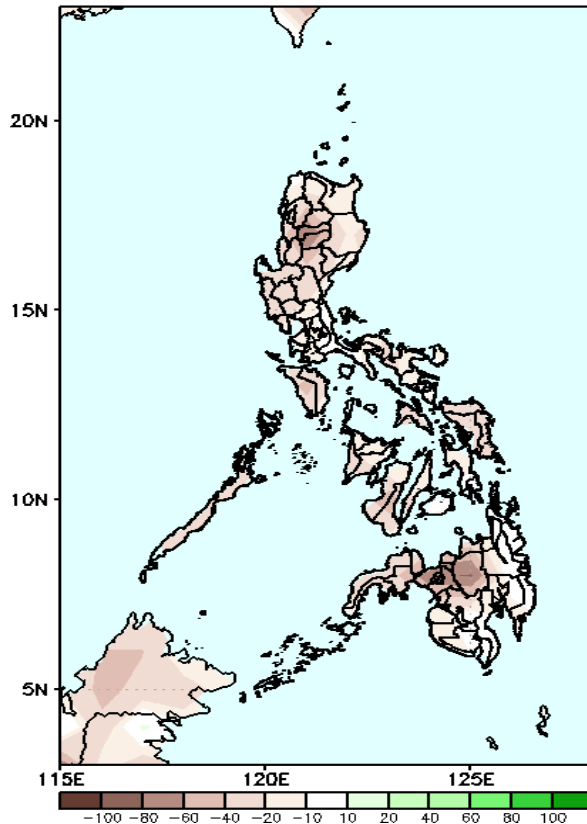
Surges of Northeast Monsoon will likely affect Extreme Northern Luzon while Easterlies will likely affect most parts of the country.

Precipitation Anomaly and Exceedance Probability > 25/50 mm



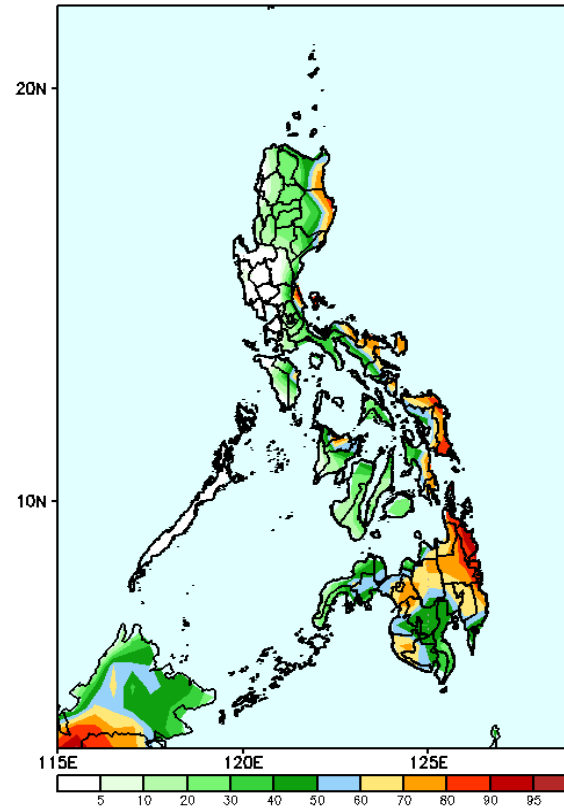
Week 2: Mar 20-26, 2024

GEFS Week-2 Precip Anomaly
Valid: 20240320 - 20240326



Rainfall deficit of 40-80mm over most parts of the country.

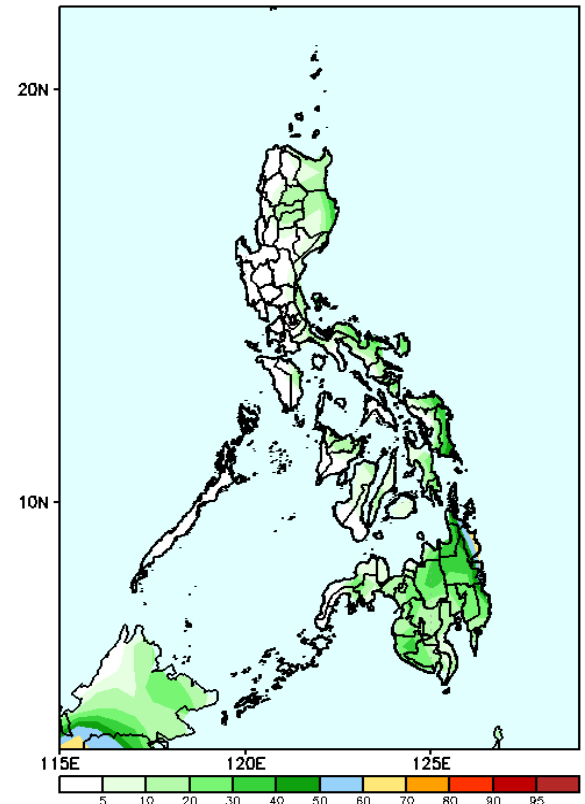
GEFS Week-2 Exceedance Prob. > 25mm
Valid: 20240320 - 20240326



Probability to Exceed 25mm

- Moderate to high over Surigao provinces;
- Low to moderate over Eastern Samar and the rest of Mindanao;
- Low over the rest of the country.

GEFS Week-2 Exceedance Prob. > 50mm
Valid: 20240320 - 20240326



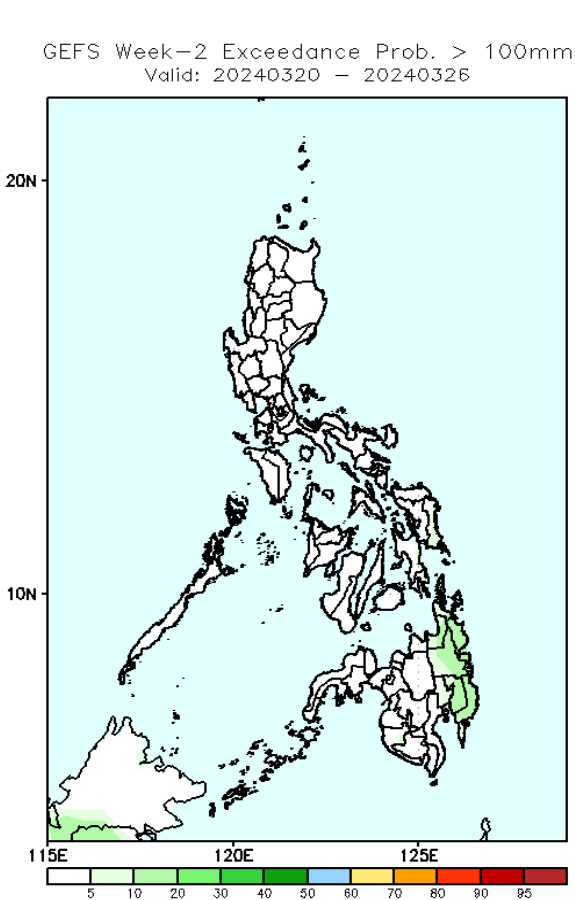
Probability to Exceed 50mm

- Low across the country.

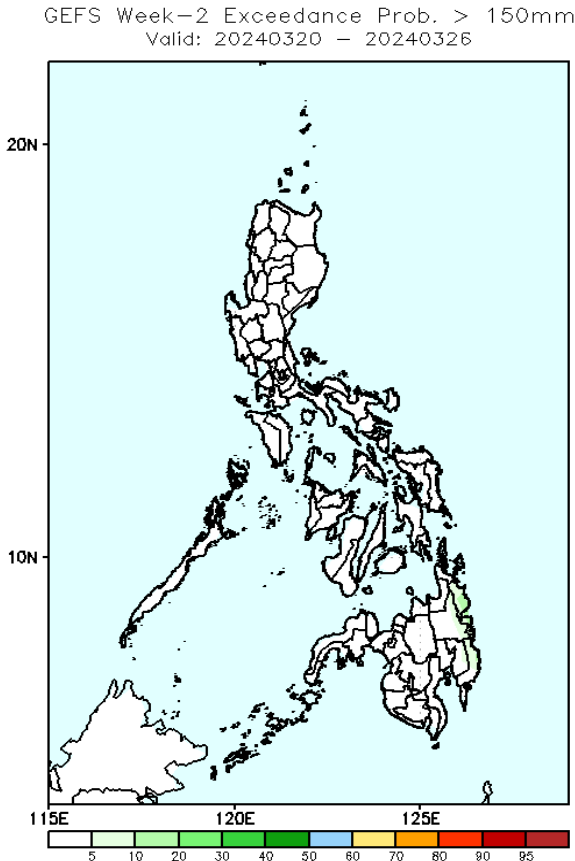
Exceedance Probability > 100/150/200 mm

Week 2: Mar 20-26, 2024

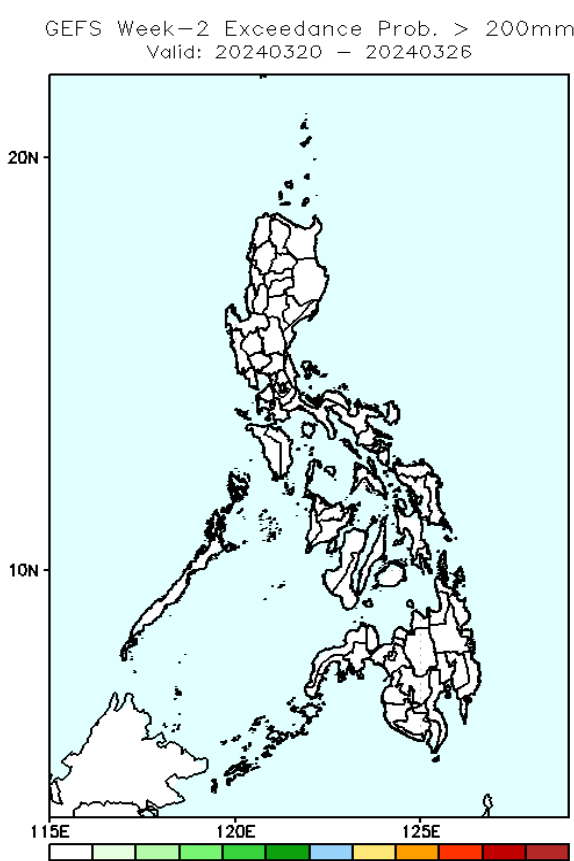
- Very high probability
- High Probability
- Moderate Probability
- Low Probability



Probability to Exceed 100mm
• Low across the country.



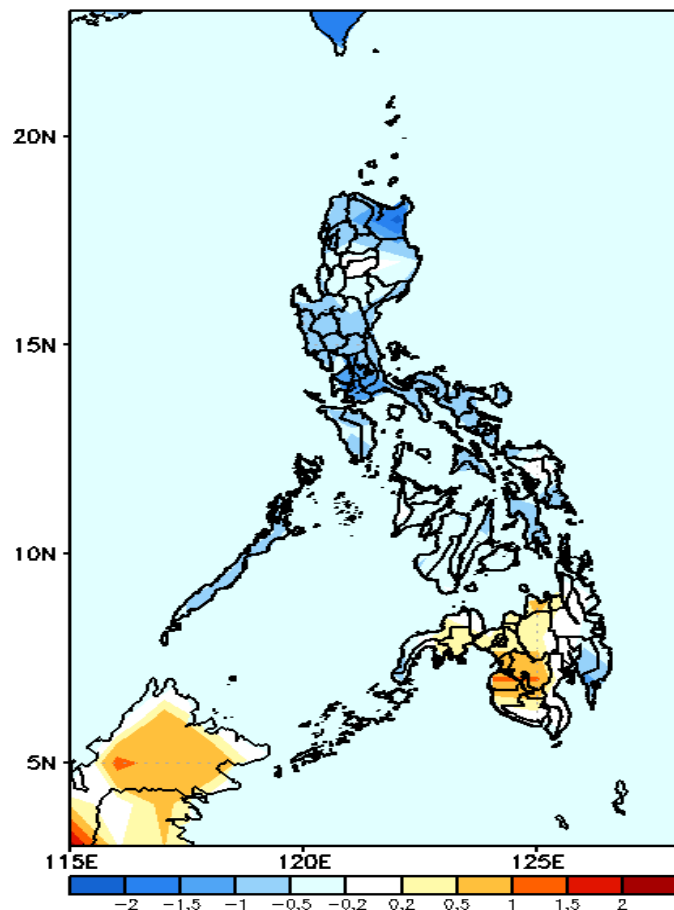
Probability to Exceed 150mm
• Low across the country.



Probability to Exceed 200mm
• Low across the country.

GEFS Week-1 & 2 Forecasts: T2m Anomaly

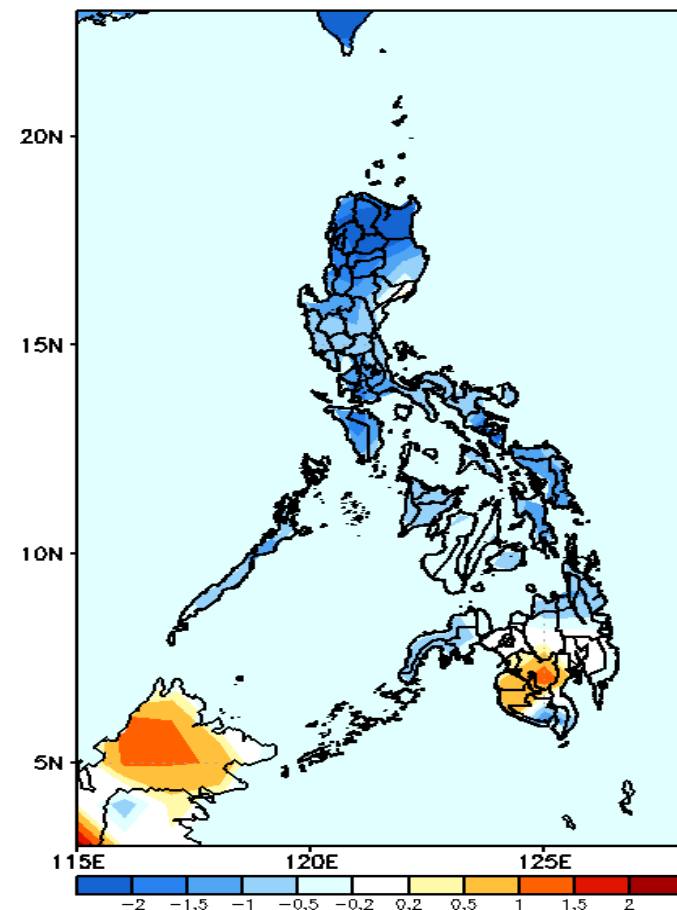
GEFS Week-1 T2m Anomaly
Valid: 20240313 - 20240319



2m Temperature Week 1: Mar 13-19, 2024

Average to cooler than average surface air temperature will likely be experienced in most parts of Luzon, Visayas and Davao Region while slightly warmer to warmer than average surface air temperature is expected over the rest of Mindanao.

GEFS Week-2 T2m Anomaly
Valid: 20240320 - 20240326



2m Temperature Week 2: Mar 20-26, 2024

Average to cooler than average surface air temperature will likely be experienced in most parts of the country except North Cotabato, Maguindanao and Sultan Kudarat where slightly warmer to warmer than average surface air temperature is expected.