



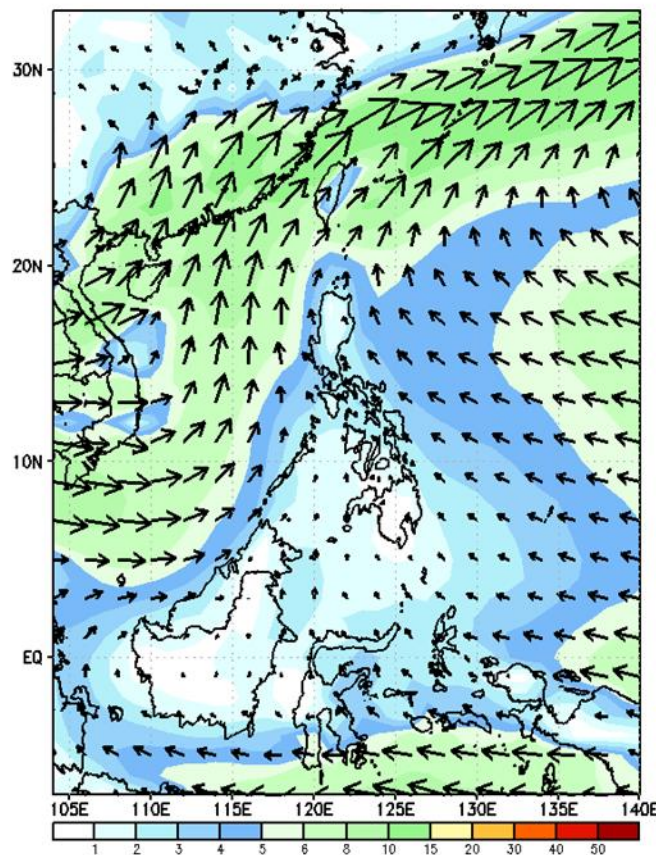
Week 1 & Week 2 Forecast for the Philippines using GEFS Model



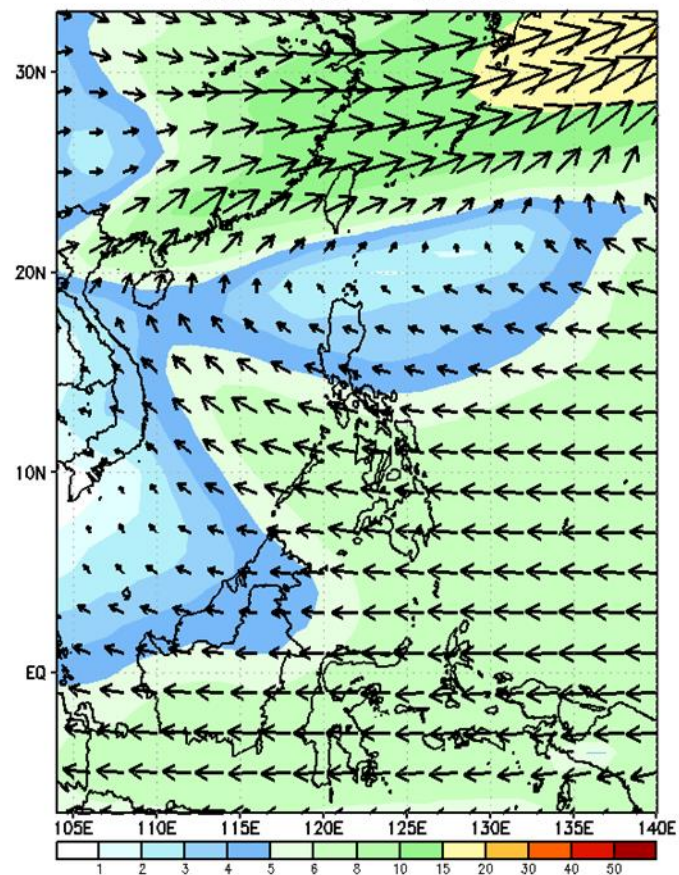
GEFS Week-1 Wind Forecasts:

Week 1: Jun 14-20, 2024

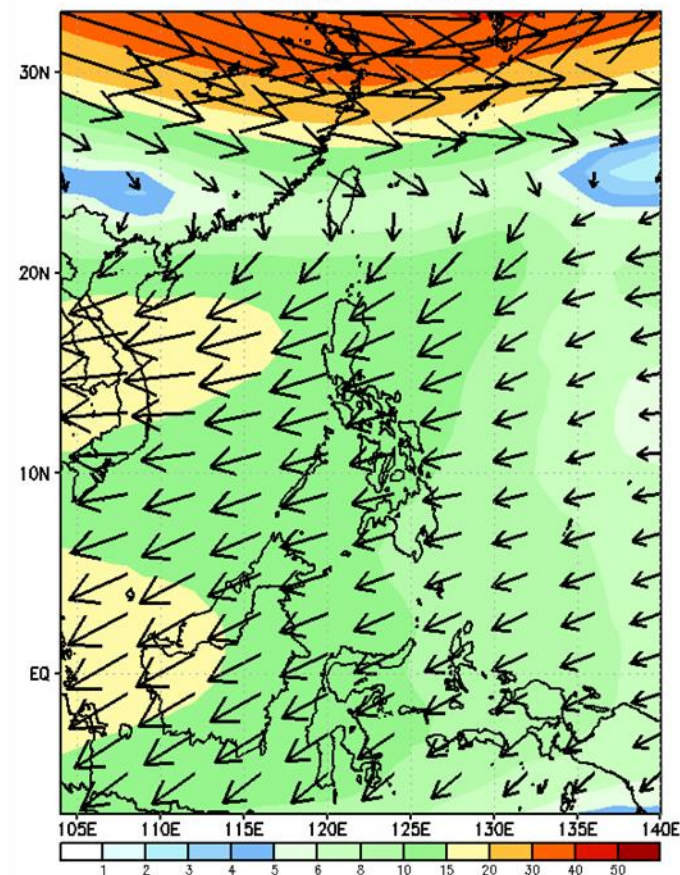
GEFS Week-1 850-hPa Wind Total
Valid: 20240614 - 20240620



GEFS Week-1 500-hPa Wind Total
Valid: 20240614 - 20240620

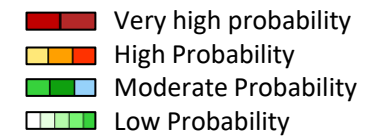


GEFS Week-1 200-hPa Wind Total
Valid: 20240614 - 20240620



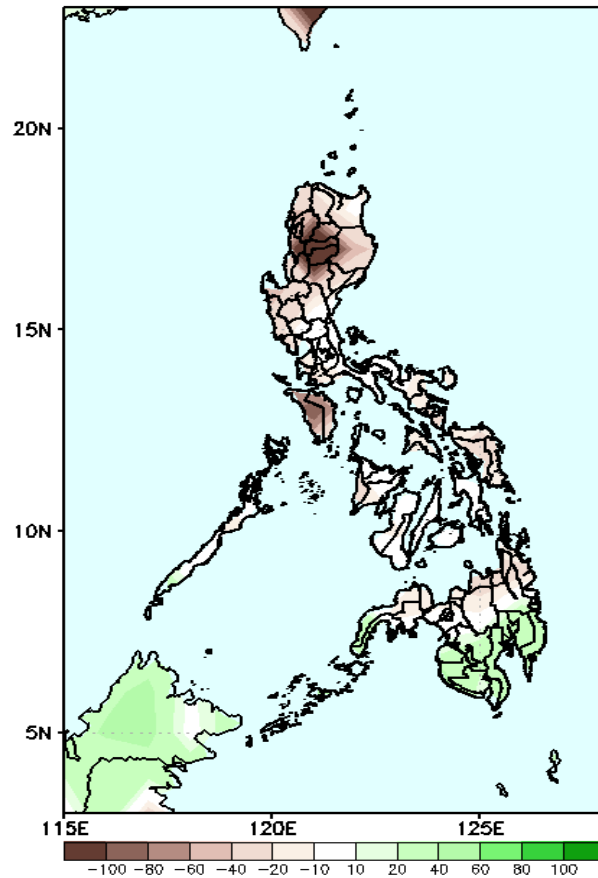
Southwest Monsoon affecting Western Luzon. Easterlies affecting the rest of the country.

Precipitation Anomaly and Exceedance Probability > 25/50 mm



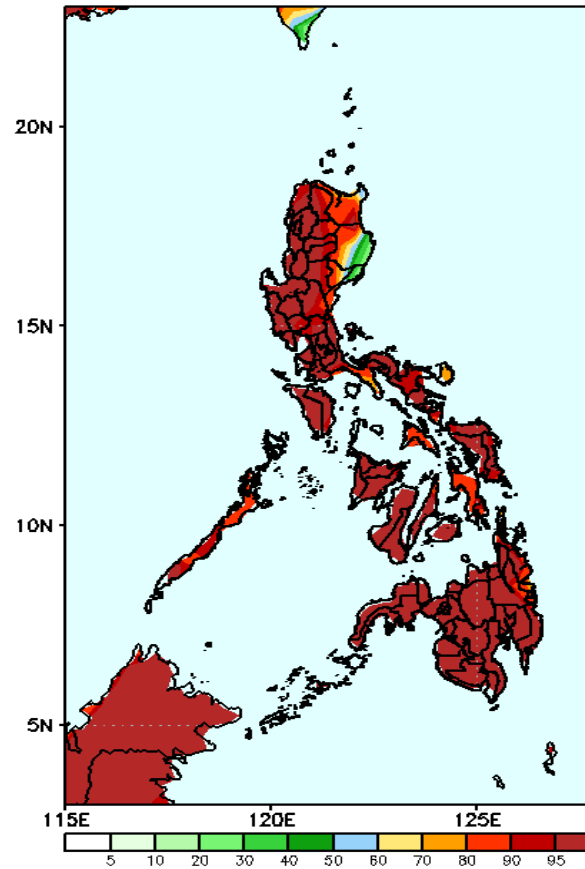
Week 1: Jun 14-20, 2024

GEFS Week-1 Precip Anomaly
Valid: 20240614 - 20240620



Rainfall deficit of more than 100mm in CAR, Ilocos Sur and Mindoro; 20-90mm for the rest of Luzon, Visayas and Northern Mindanao while 20-60mm increase of rainfall for the rest of Mindanao. .

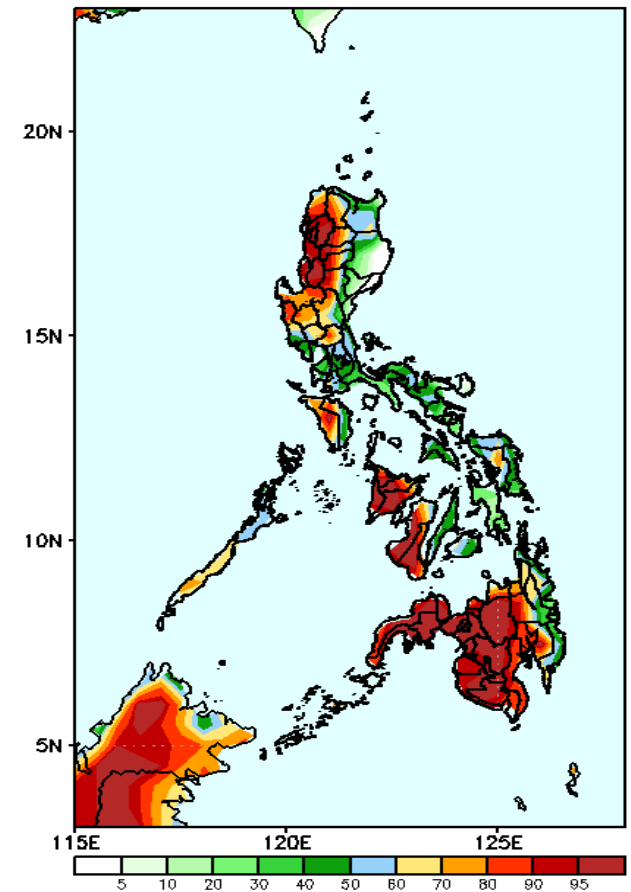
GEFS Week-1 Exceedance Prob. > 25mm
Valid: 20240614 - 20240620



Probability to Exceed 25mm

- High to very high over most of the country;
- Moderate to high over the eastern section of Cagayan Valley.

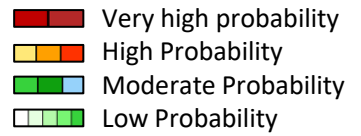
GEFS Week-1 Exceedance Prob. > 50mm
Valid: 20240614 - 20240620



Probability to Exceed 50mm

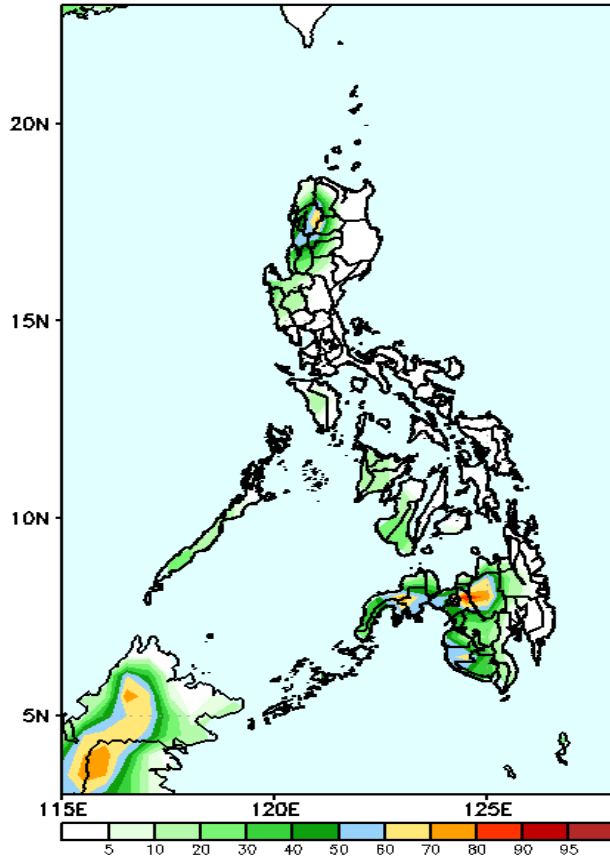
- High to very high over Ilocos Region, Western Visayas and most of Mindanao;
- Moderate to high over CAR, NCR, the rest of Southern Luzon, Visayas, and eastern section of Eastern Mindanao;
- Low to moderate over the rest of Northern and Central Luzon.

Exceedance Probability > 100/150/200 mm



Week 1: Jun 14-20, 2024

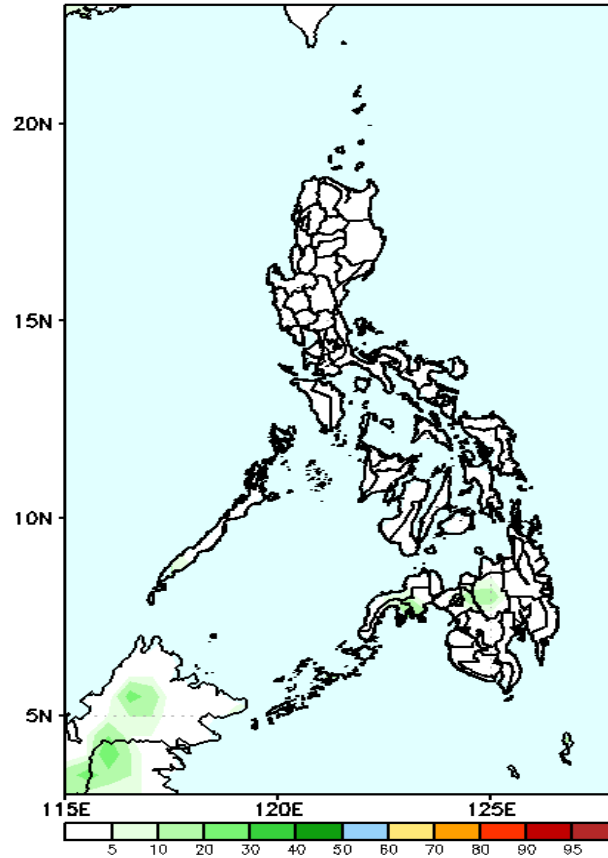
GEFS Week-1 Exceedance Prob. > 100mm
Valid: 20240614 - 20240620



Probability to Exceed 100mm

- Moderate to high over Bukidnon and Lanao Provinces ;
- Low to moderate over portions of CAR and Ilocos Sur and the rest of western Mindanao;
- Low over the rest of the country.

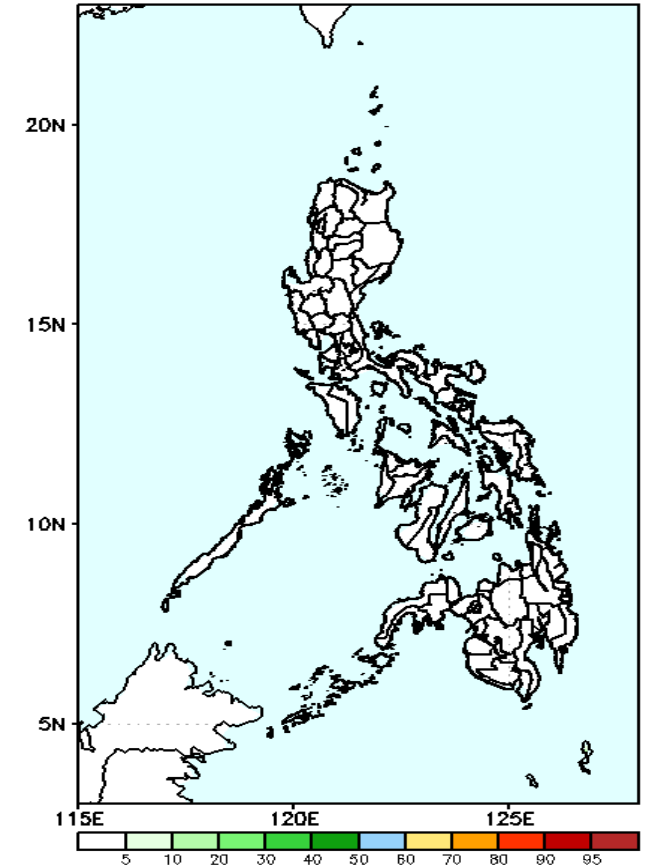
GEFS Week-1 Exceedance Prob. > 150mm
Valid: 20240614 - 20240620



Probability to Exceed 150mm

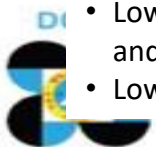
- Low across the country.

GEFS Week-1 Exceedance Prob. > 200mm
Valid: 20240614 - 20240620



Probability to Exceed 200mm

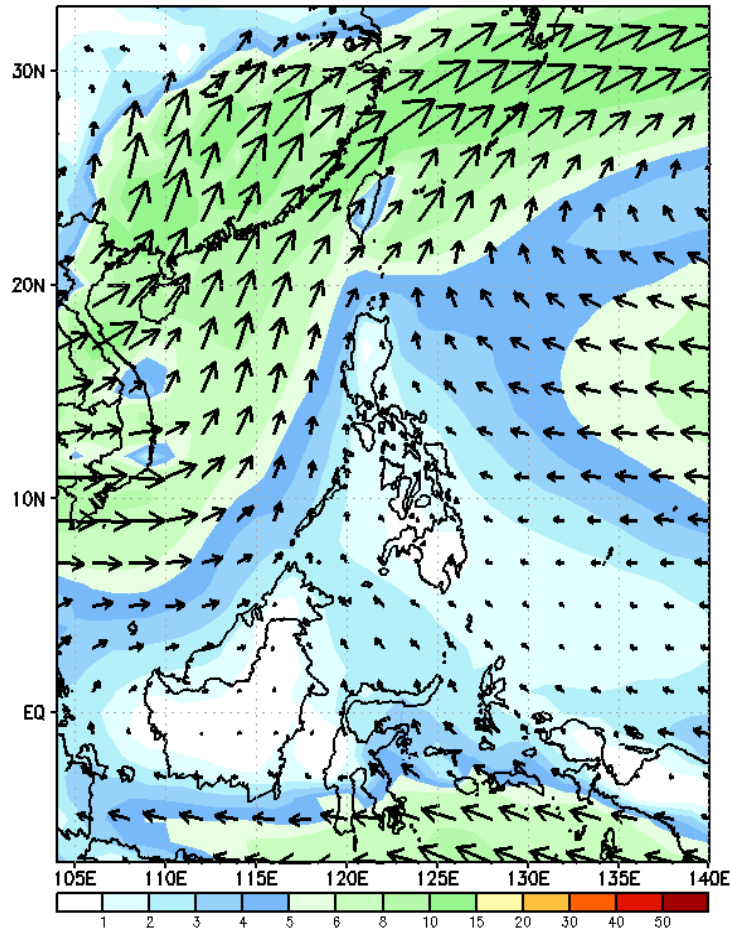
- Low across the country.



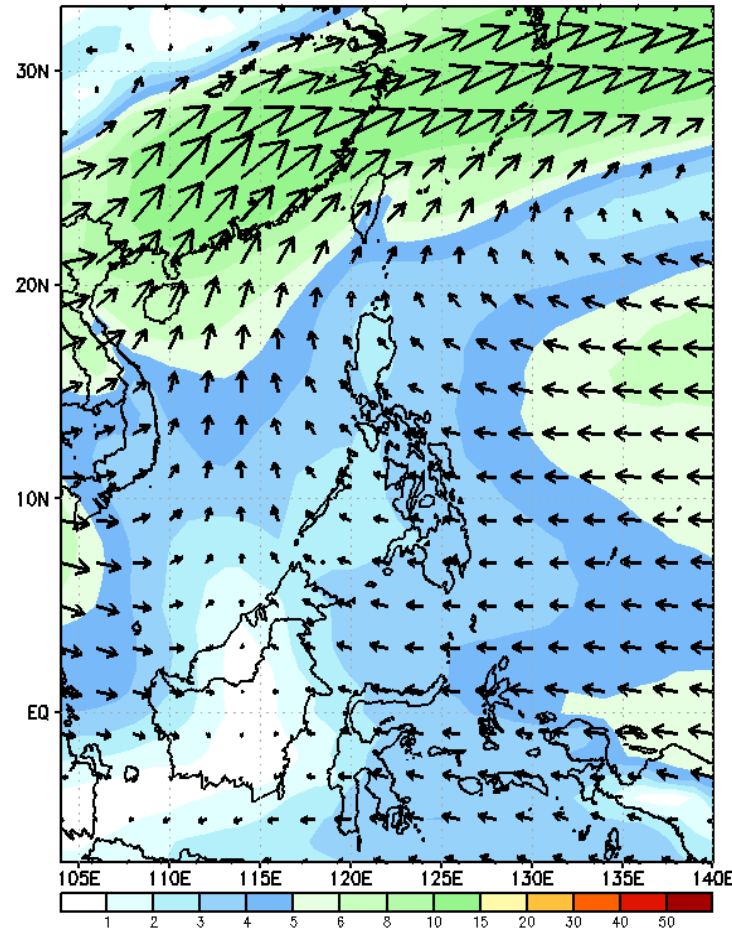
GEFS Week-2 Wind Forecasts:

Week 2: Jun 21-27, 2024

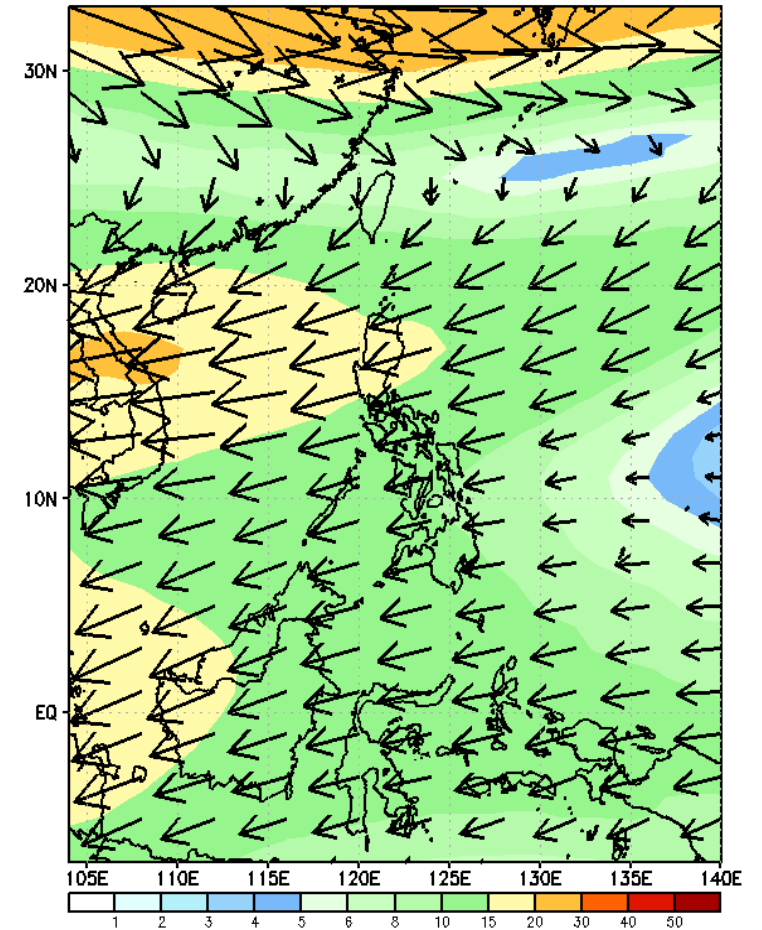
GEFS Week-2 850-hPa Wind Total
Valid: 20240621 - 20240627



GEFS Week-2 700-hPa Wind Total
Valid: 20240621 - 20240627

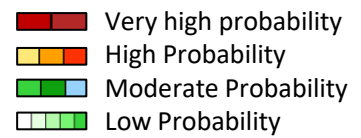


GEFS Week-2 200-hPa Wind Total
Valid: 20240621 - 20240627



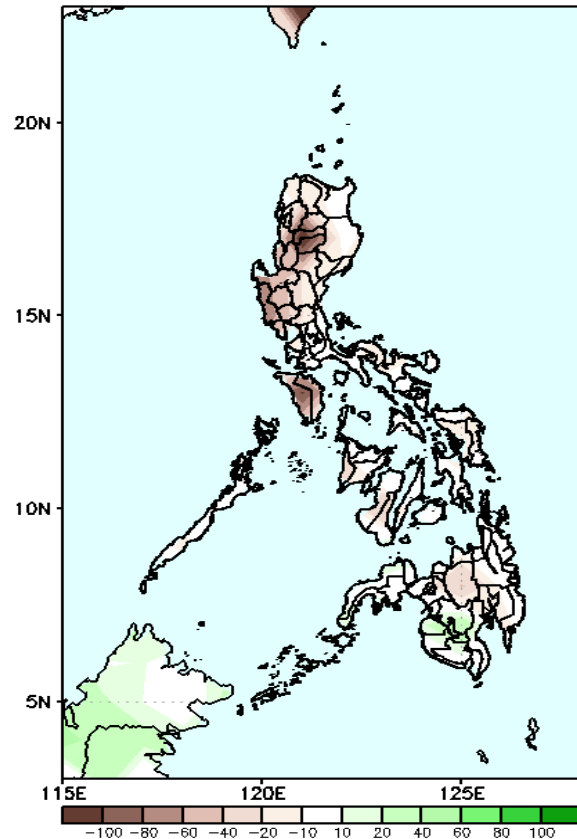
Southwest Monsoon affecting Western Luzon. Easterlies affecting the rest of the country .

Precipitation Anomaly and Exceedance Probability > 25/50 mm



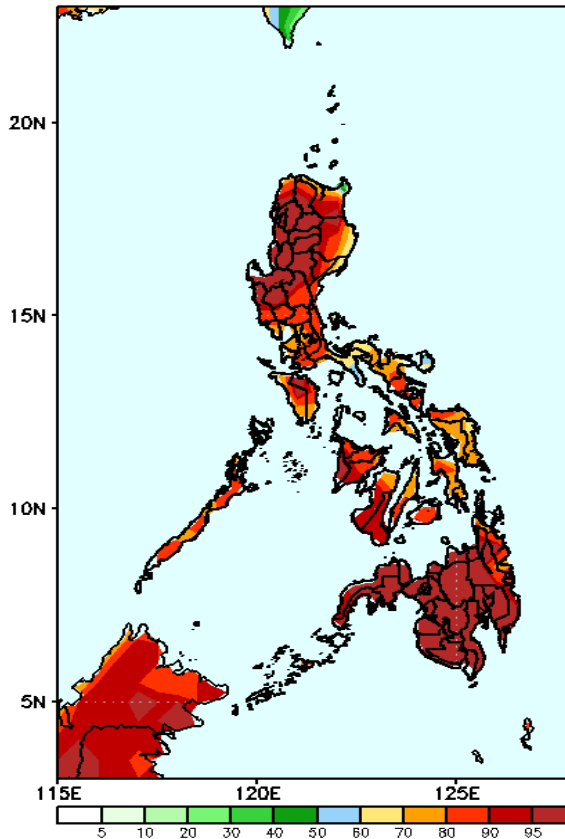
Week 2: Jun 21-27, 2024

GEFS Week-2 Precip Anomaly
Valid: 20240621 - 20240627



Rainfall deficit of 20-80mm is expected in most parts of the country except in southwestern Mindanao where there is 20-40mm Increase of rainfall.

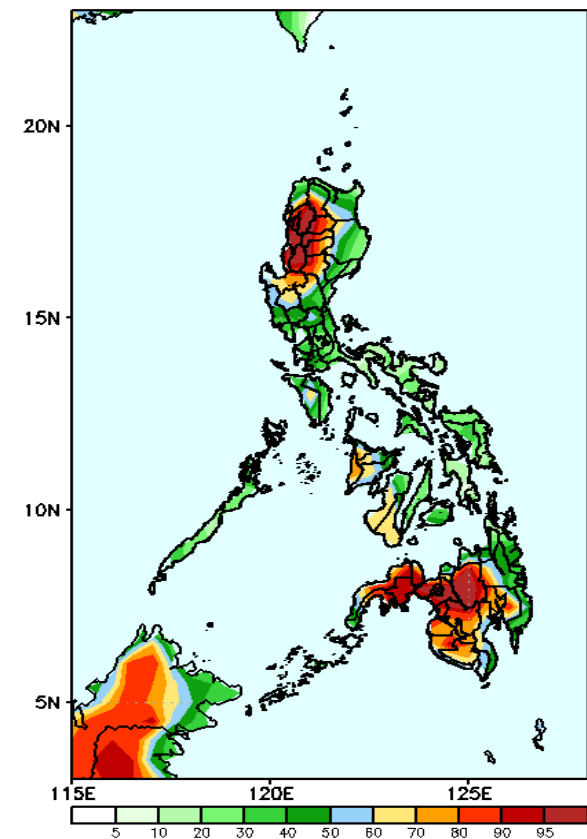
GEFS Week-2 Exceedance Prob. > 25mm
Valid: 20240621 - 20240627



Probability to Exceed 25mm

- High to very high over most parts of the country;
- Moderate to high over Catanduanes and the northern portion of Cagayan.

GEFS Week-2 Exceedance Prob. > 50mm
Valid: 20240621 - 20240627

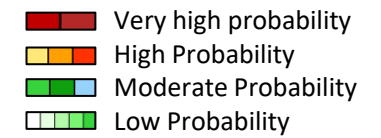


Probability to Exceed 50mm

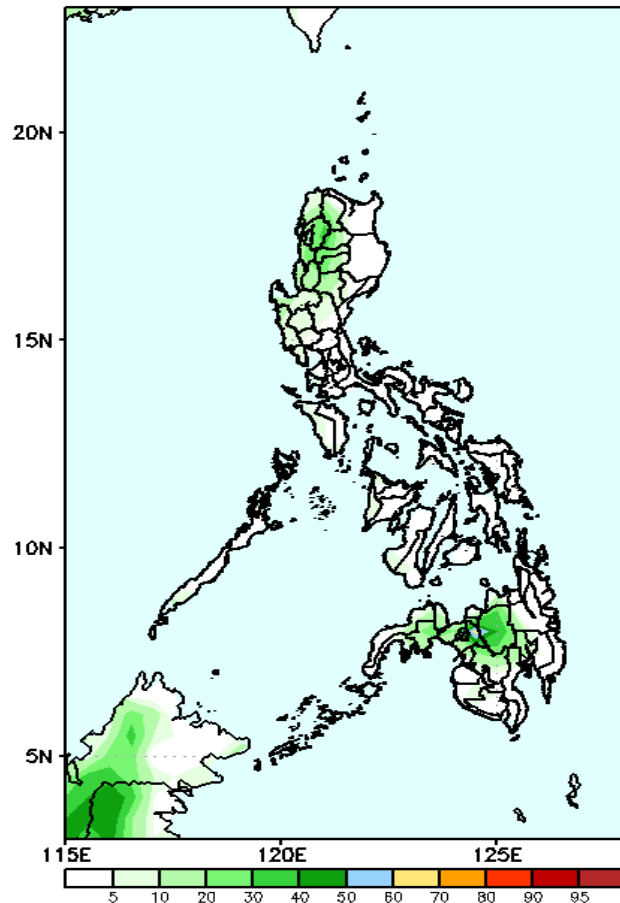
- High to very high over most of CAR, La Union, Ilocos Sur, Bukidnon, Lanao provinces and Zamboanga del Sur;
- Moderate to high over the rest of Western Luzon, Western Visayas, and the rest of Mindanao;
- Low to moderate over the rest of the country.

Exceedance Probability > 100/150/200 mm

Week 2: Jun 21-27, 2024



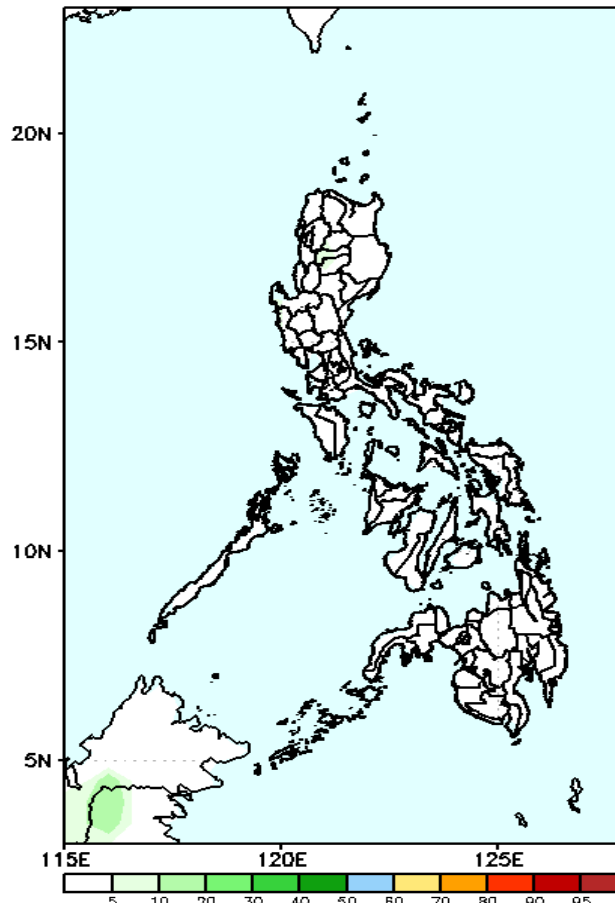
GEFS Week-2 Exceedance Prob. > 100mm
Valid: 20240621 - 20240627



Probability to Exceed 100mm

- Low across the country.

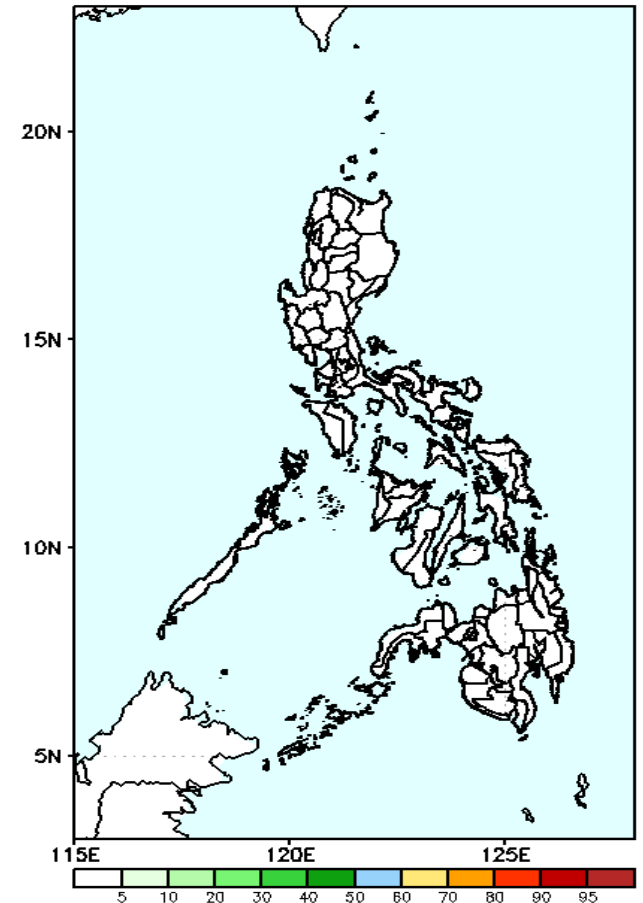
GEFS Week-2 Exceedance Prob. > 150mm
Valid: 20240621 - 20240627



Probability to Exceed 150mm

- Low across the country.

GEFS Week-2 Exceedance Prob. > 200mm
Valid: 20240621 - 20240627

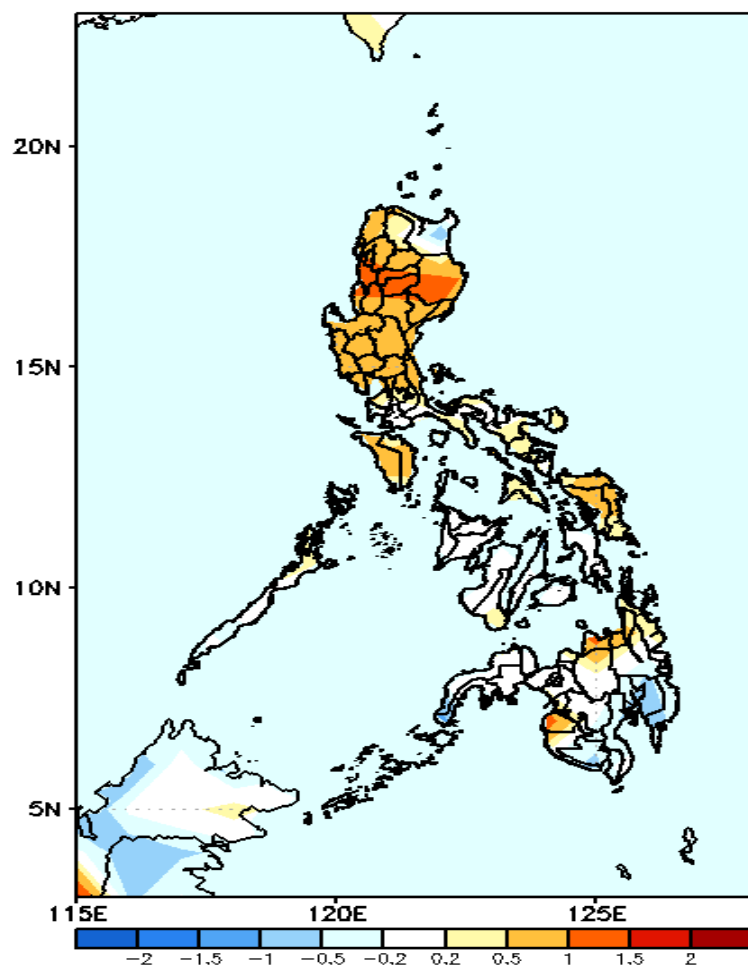


Probability to Exceed 200mm

- Low across the country.

GEFS Week-1 & 2 Forecasts: T2m Anomaly

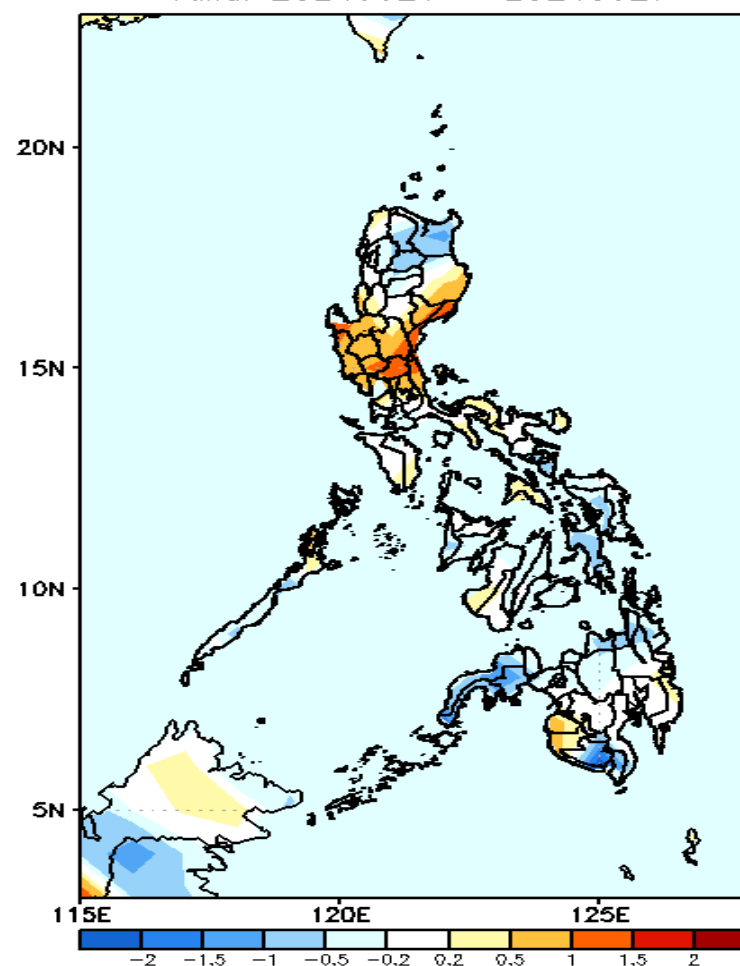
GEFS Week-1 T2m Anomaly
Valid: 20240614 – 20240620



2m Temperature Week 1: Jun 14-20, 2024

Near to warmer than average surface air temperature will likely be experienced in most parts of the country except in Davao Region where slightly cooler than average temperature is expected.

GEFS Week-2 T2m Anomaly
Valid: 20240621 – 20240627



2m Temperature Week 2: Jun 21-27, 2024

Near to cooler surface air temperature will likely be experienced in most parts of the country except in central Luzon and some areas in eastern Luzon where slightly warmer to warmer than average temperature is expected.