



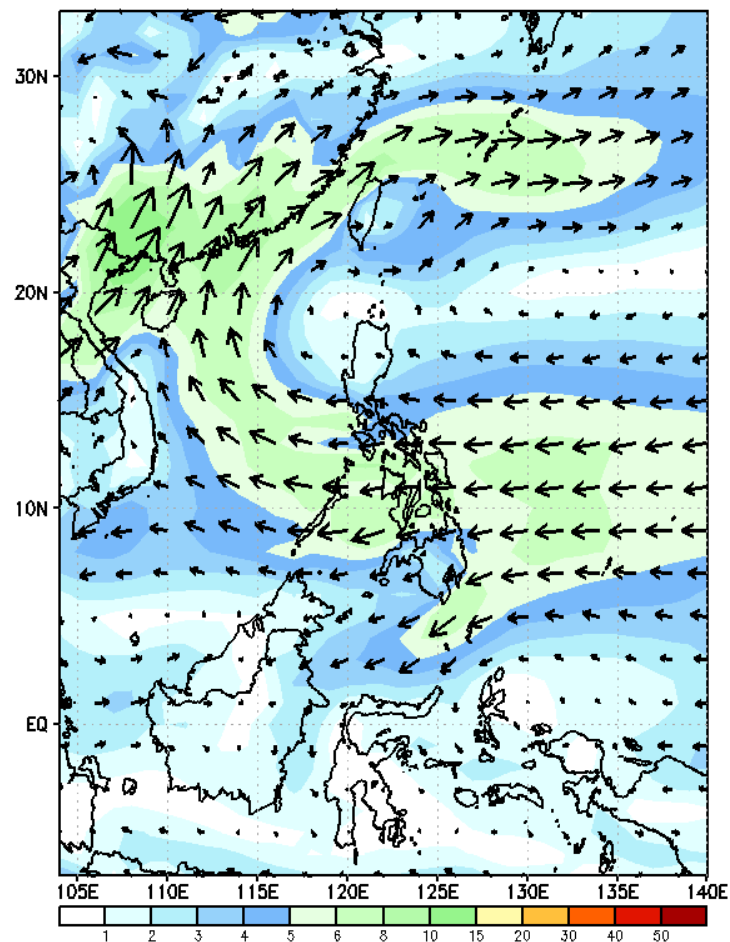
Week 1 & Week 2 Forecast for the Philippines using GEFS Model



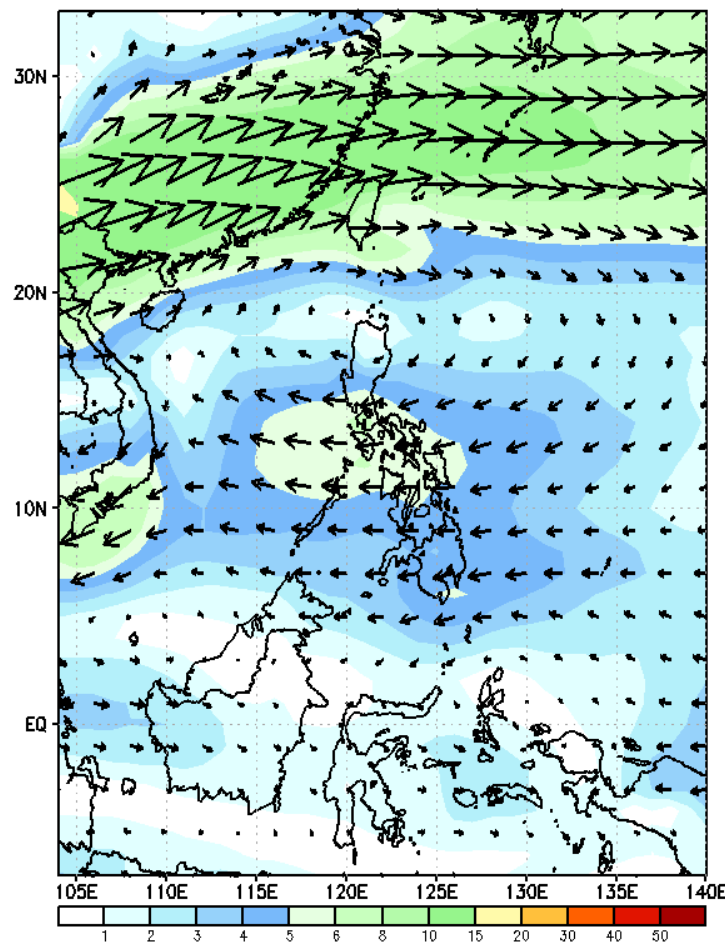
GEFS Week-1 Wind Forecasts:

Week 1: April 15-19, 2024

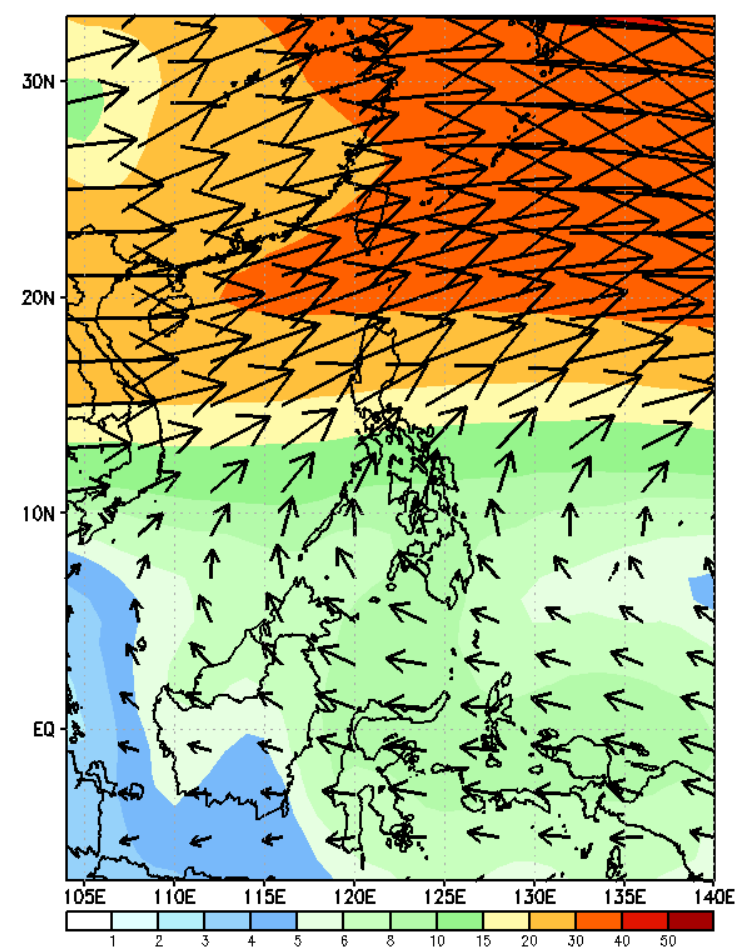
GEFS Week-1 850-hPa Wind Total
Valid: 20240415 - 20240421



GEFS Week-1 700-hPa Wind Total
Valid: 20240415 - 20240421

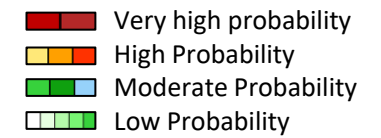


GEFS Week-1 200-hPa Wind Total
Valid: 20240415 - 20240421

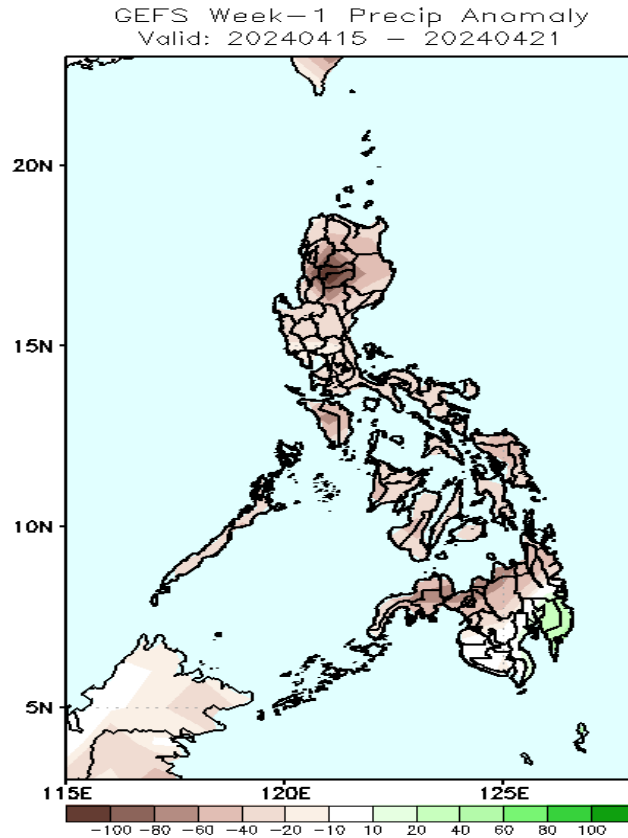


Easterlies continuously affect most parts of the country. Expect dry and warm days during the forecast period.

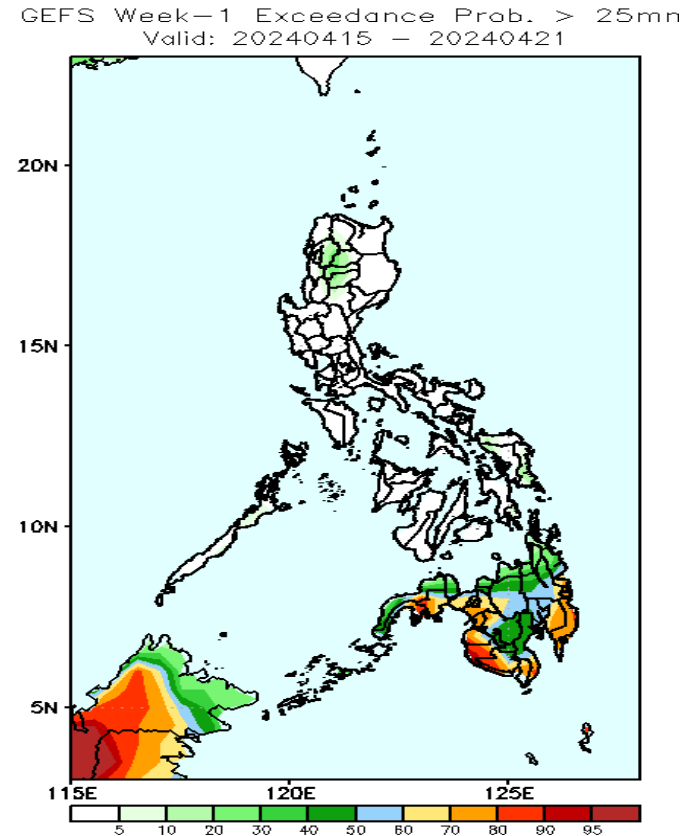
Precipitation Anomaly and Exceedance Probability > 25/50 mm



Week 1: April 15-19, 2024

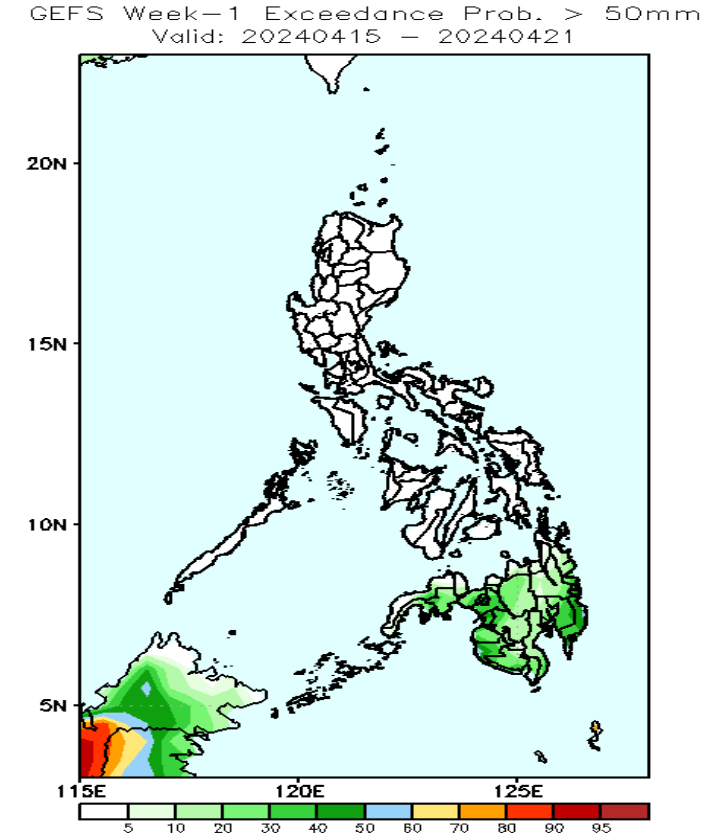


Rainfall deficit of 20-80mm in most parts of the country.



Probability to Exceed 25mm

- Moderate to High over the western portion of Mindanao and Davao Region;
- Low to moderate over the rest of Mindanao
- Low over the rest of the country.



Probability to Exceed 50mm

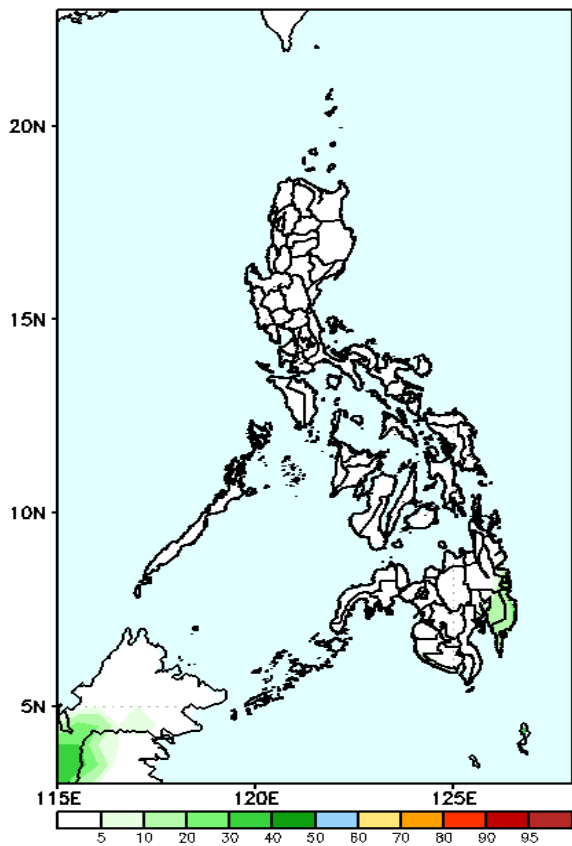
- Low to moderate over Mindanao.
- Low over the rest of the country.

Exceedance Probability > 100/150/200 mm

Week 1: April 15-19, 2024

- Very high probability
- High Probability
- Moderate Probability
- Low Probability

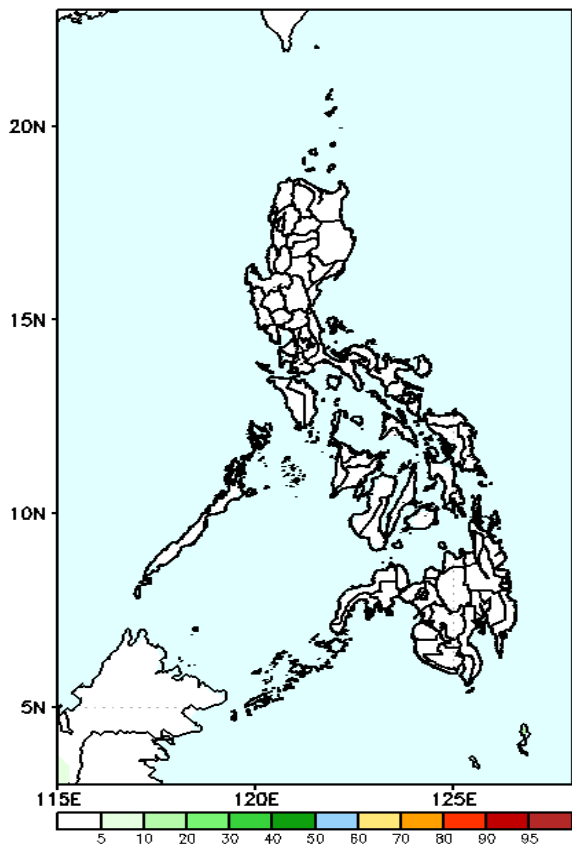
GEFS Week-1 Exceedance Prob. > 100mm
Valid: 20240415 - 20240421



Probability to Exceed 100mm

- Low across the country.

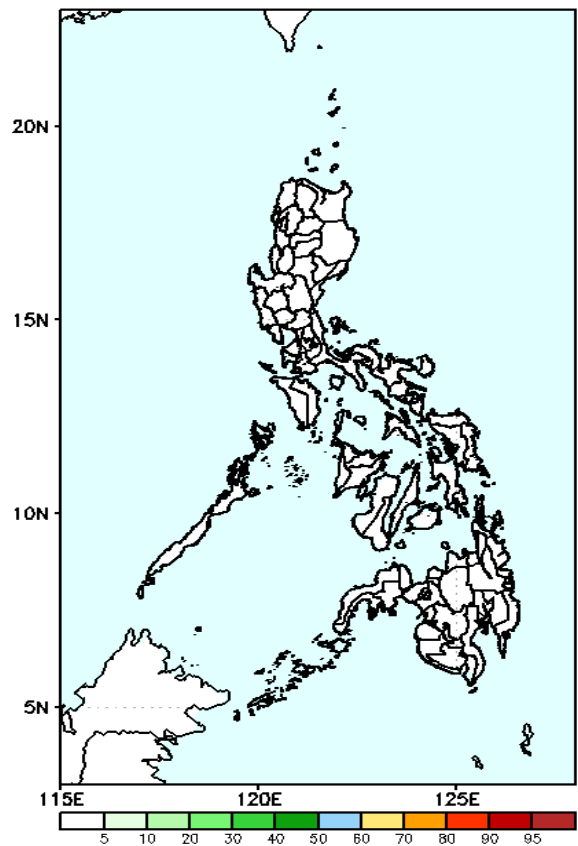
GEFS Week-1 Exceedance Prob. > 150mm
Valid: 20240415 - 20240421



Probability to Exceed 150mm

- Low across the country.

GEFS Week-1 Exceedance Prob. > 200mm
Valid: 20240415 - 20240421



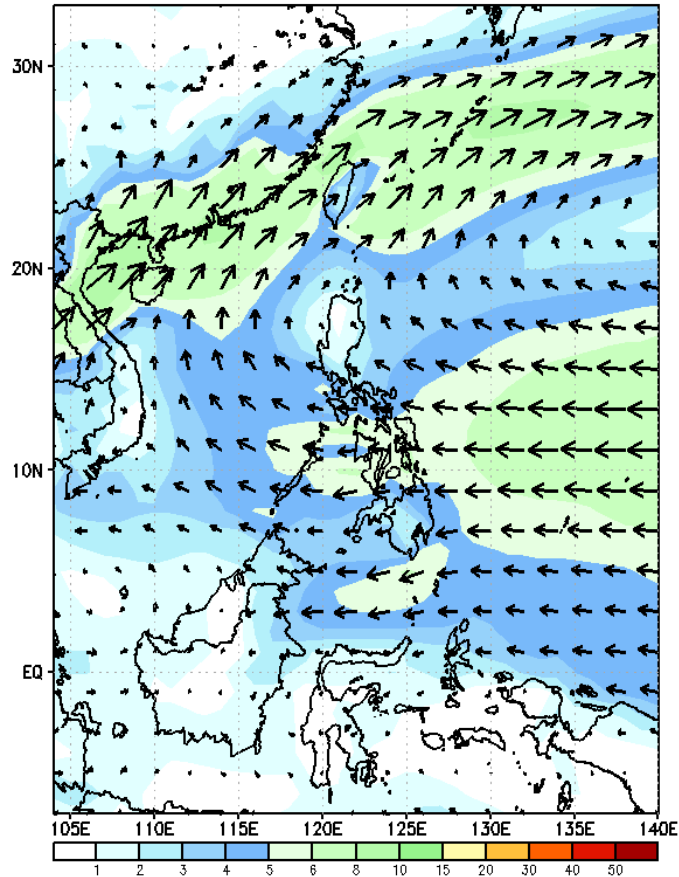
Probability to Exceed 200mm

- Low across the country.

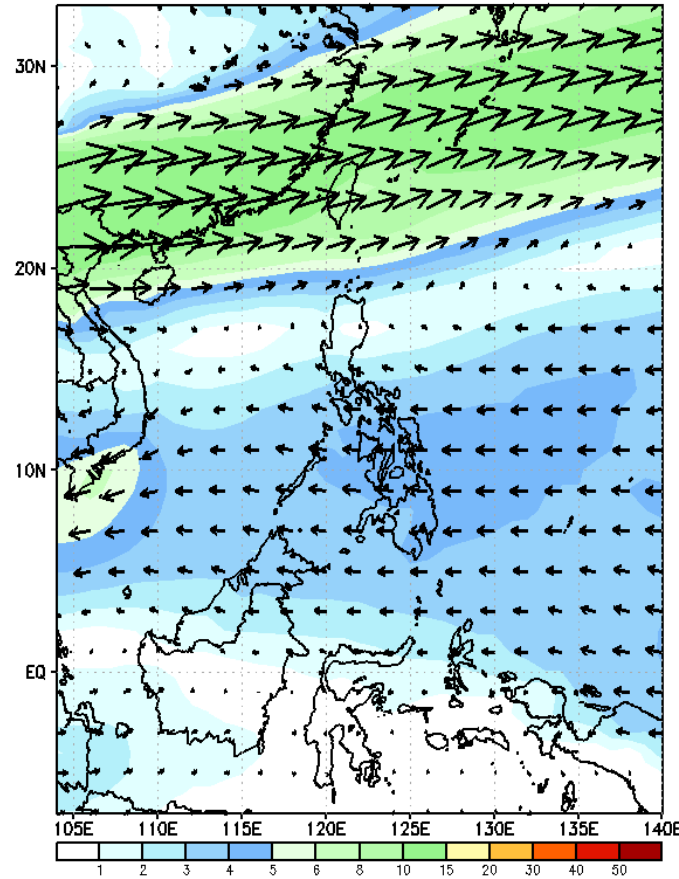
GEFS Week-2 Wind Forecasts:

Week 2: Apr 22-28, 2024

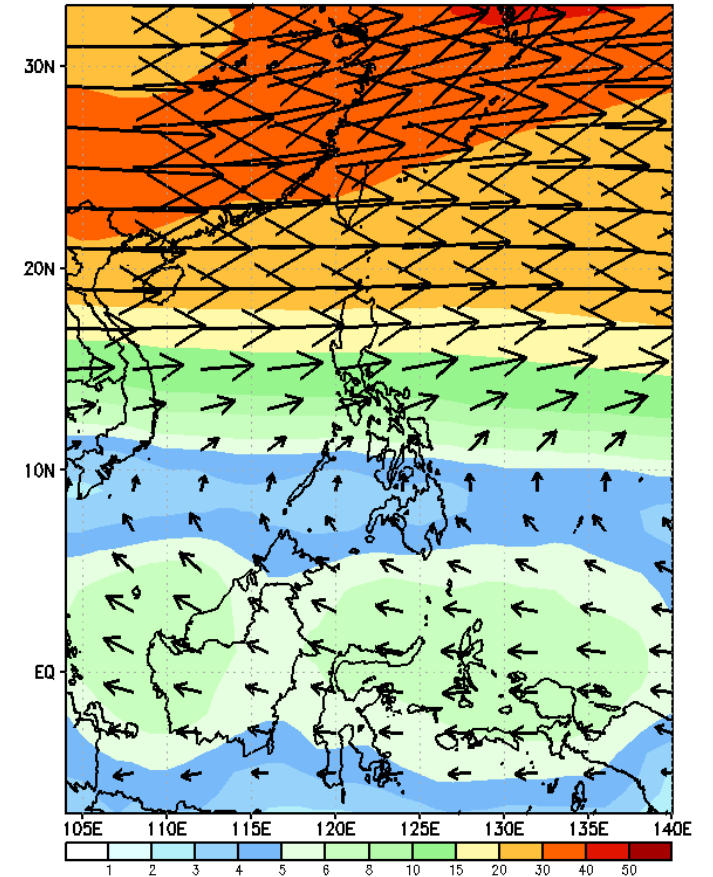
GEFS Week-2 850-hPa Wind Total
Valid: 20240422 - 20240428



GEFS Week-2 700-hPa Wind Total
Valid: 20240422 - 20240428

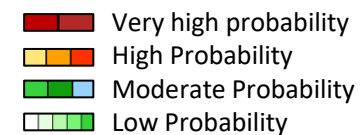


GEFS Week-2 200-hPa Wind Total
Valid: 20240422 - 20240428

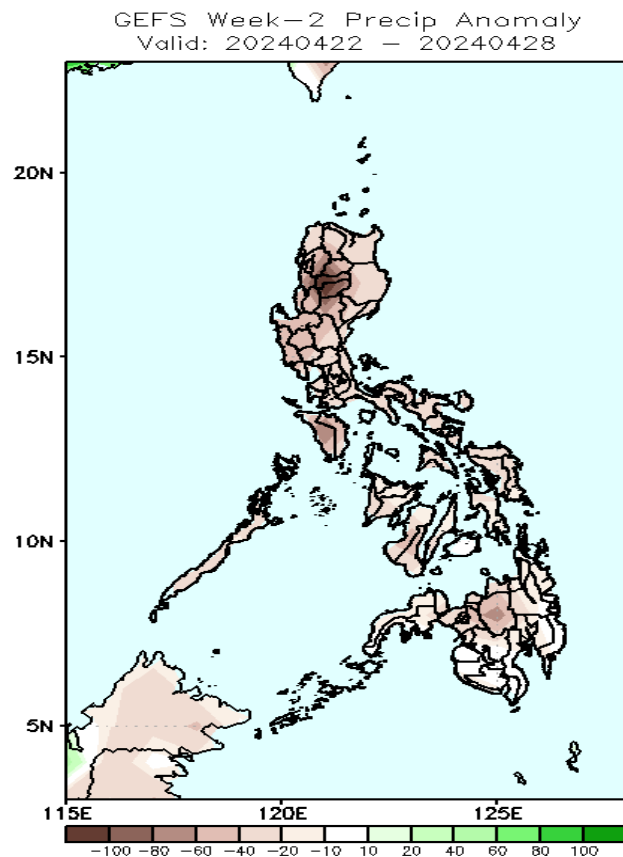


Easterlies will likely prevail in most parts of the country. Expect dry and warm days during the forecast period.

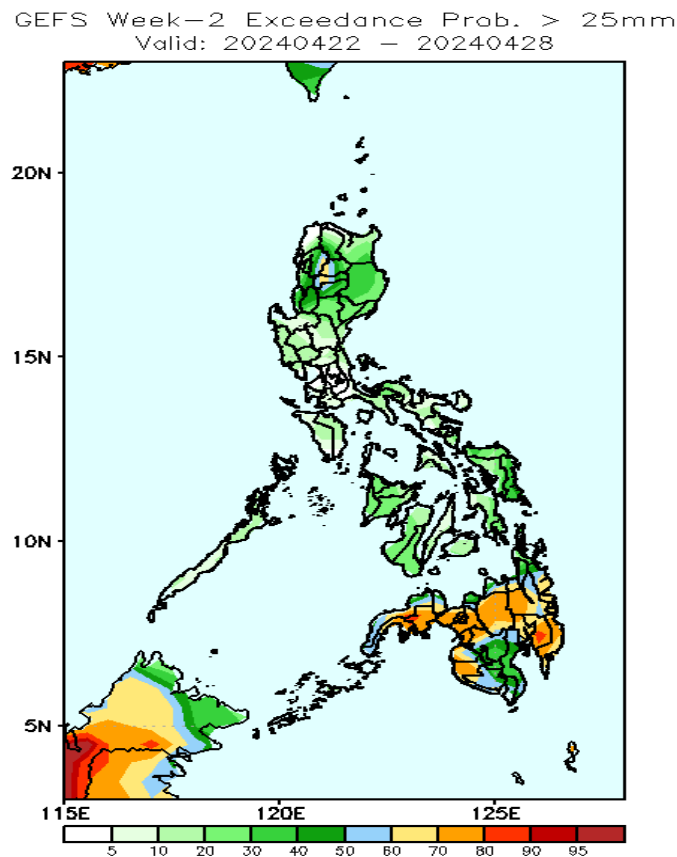
Precipitation Anomaly and Exceedance Probability > 25/50 mm



Week 2: Apr 22-28, 2024

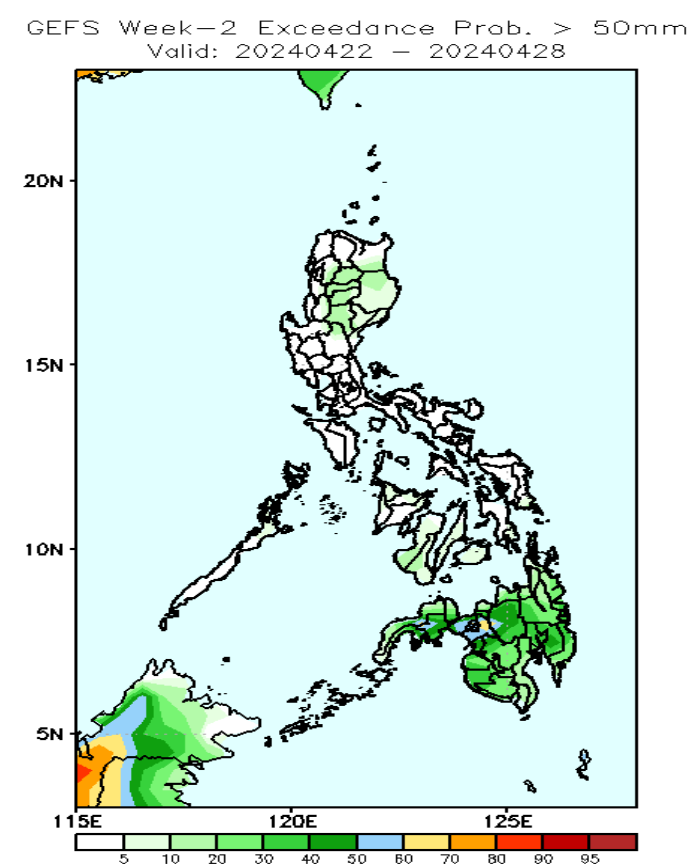


Rainfall deficit of 20-80mm in most parts of the country.



Probability to Exceed 25mm

- Moderate to high over CAR and most of Mindanao;
- Low to moderate over the rest of Northern Luzon;
- Low over the rest of the country.



Probability to Exceed 50mm

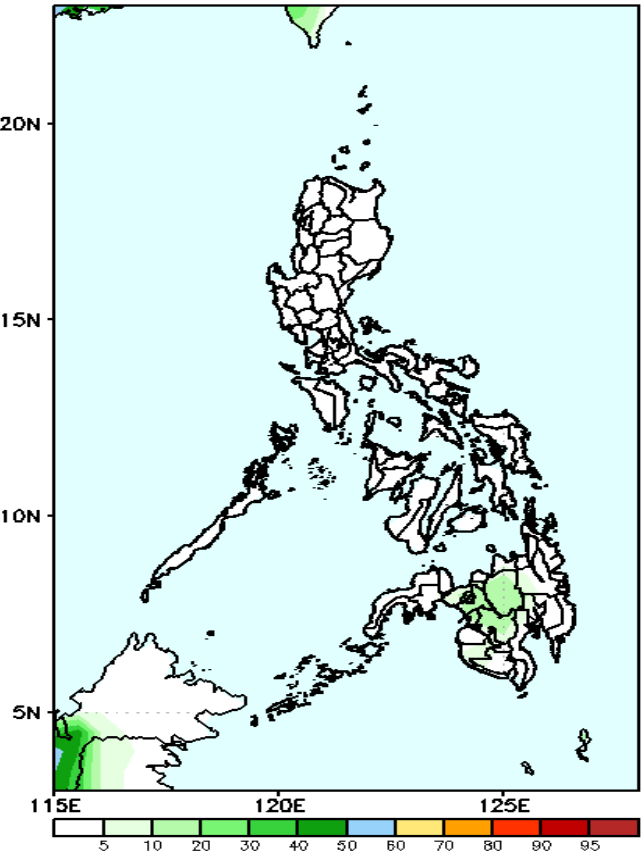
- Low to moderate over Mindanao
- Low over the rest of the country.

Exceedance Probability > 100/150/200 mm

Week 2: Apr 22-28, 2024

- Very high probability
- High Probability
- Moderate Probability
- Low Probability

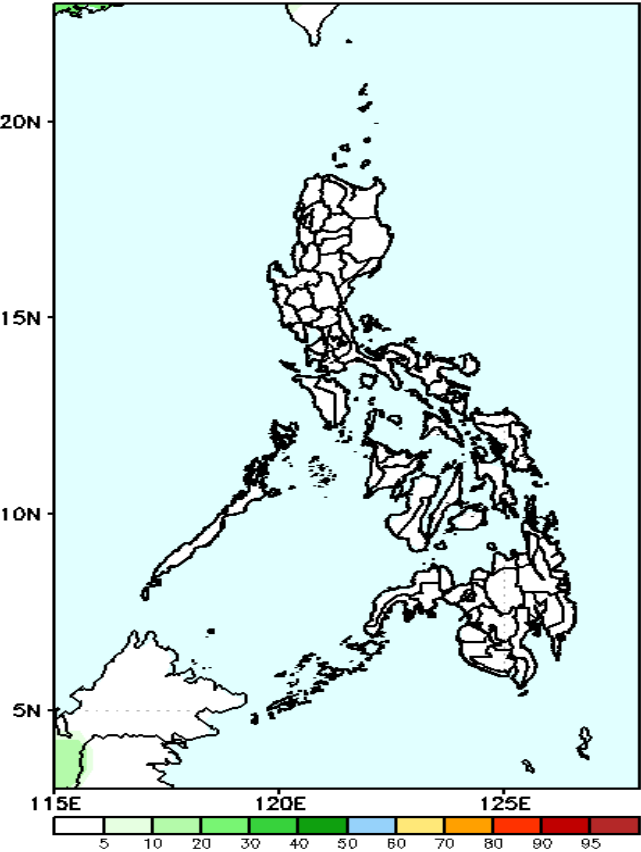
GEFS Week-2 Exceedance Prob. > 100mm
Valid: 20240422 – 20240428



Probability to Exceed 100mm

- Low across the country.

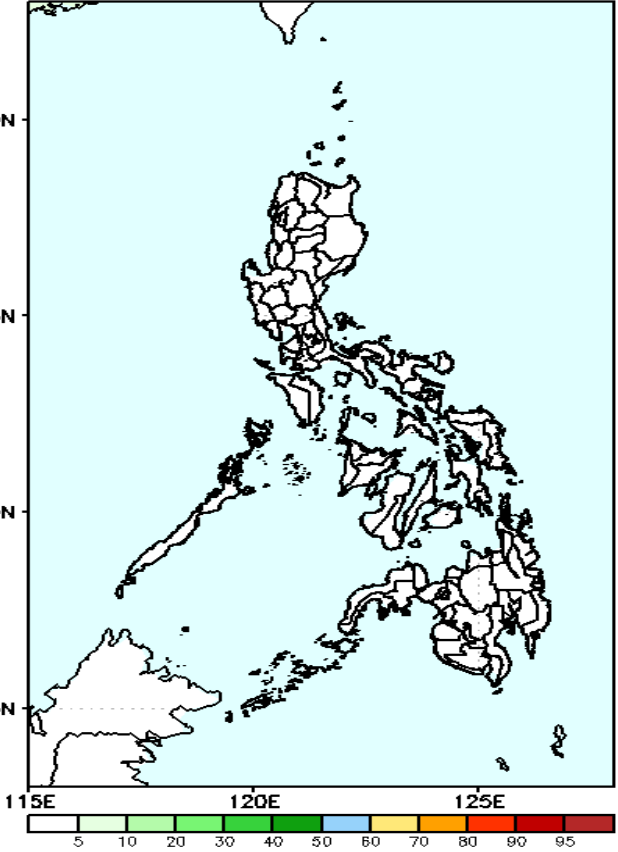
GEFS Week-2 Exceedance Prob. > 150mm
Valid: 20240422 – 20240428



Probability to Exceed 150mm

- Low across the country.

GEFS Week-2 Exceedance Prob. > 200mm
Valid: 20240422 – 20240428

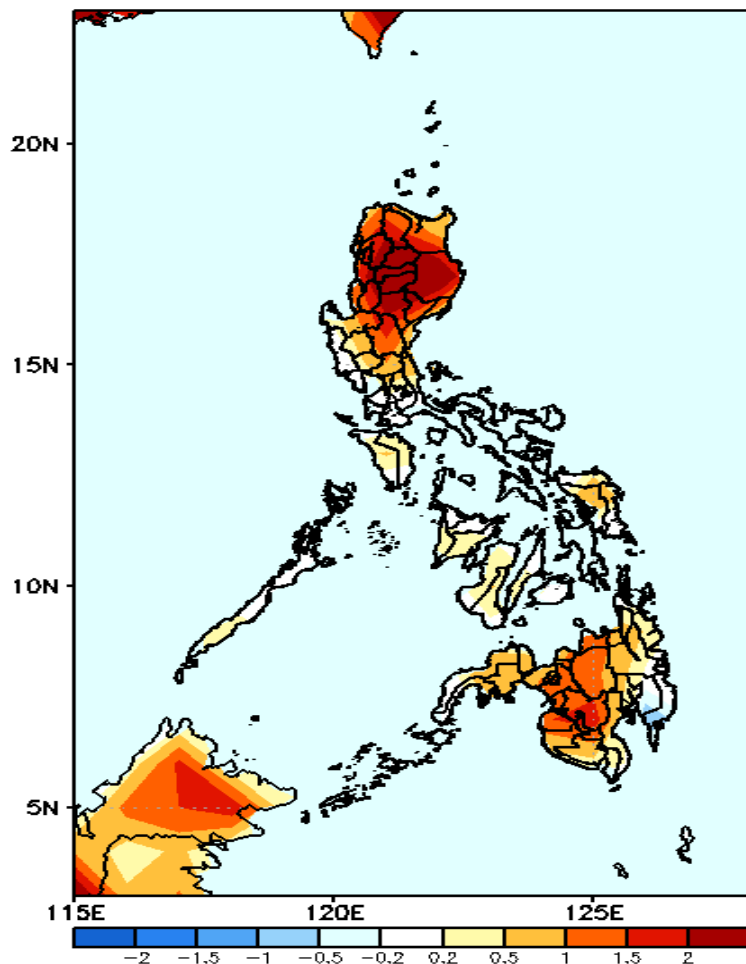


Probability to Exceed 200mm

- Low across the country.

GEFS Week-1 & 2 Forecasts: T2m Anomaly

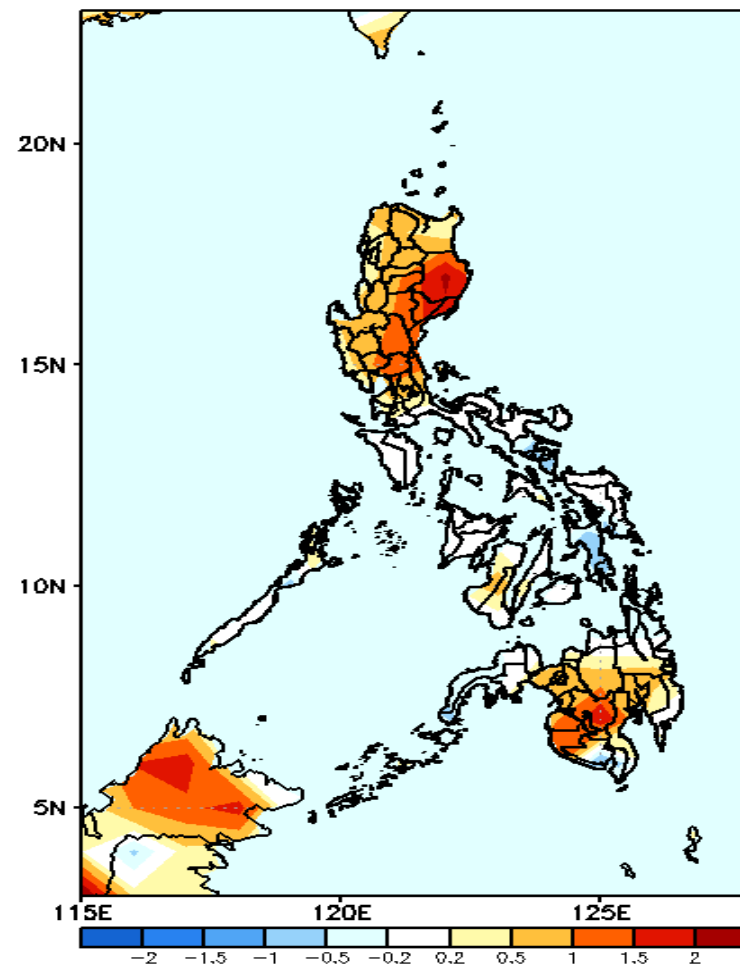
GEFS Week-1 T2m Anomaly
Valid: 20240415 - 20240421



2m Temperature Week 1: April 15-19, 2024

Warmer than average surface air temperature will likely be experienced in most parts of northern & central Luzon and western and northern Mindanao; Average to slightly warmer for the rest of the country.

GEFS Week-2 T2m Anomaly
Valid: 20240422 - 20240428



2m Temperature Week 2: Apr 22-28, 2024

Slightly warmer to warmer than average surface air temperature will likely be experienced in most parts of Luzon and western Mindanao while near to slightly cooler for the rest of the country.