



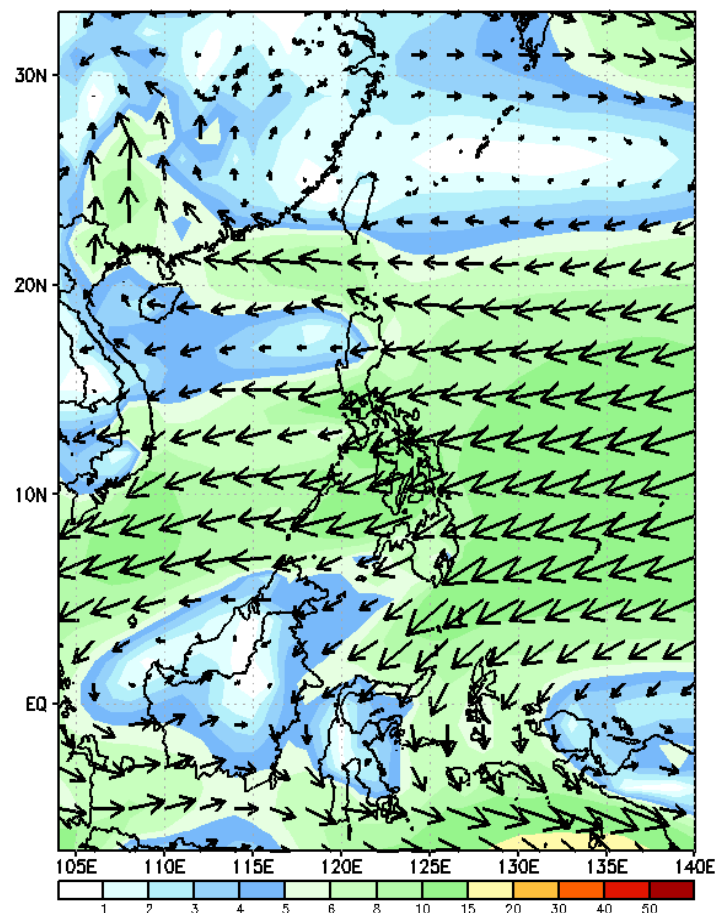
# Week 1 & Week 2 Forecast for the Philippines using GEFS Model



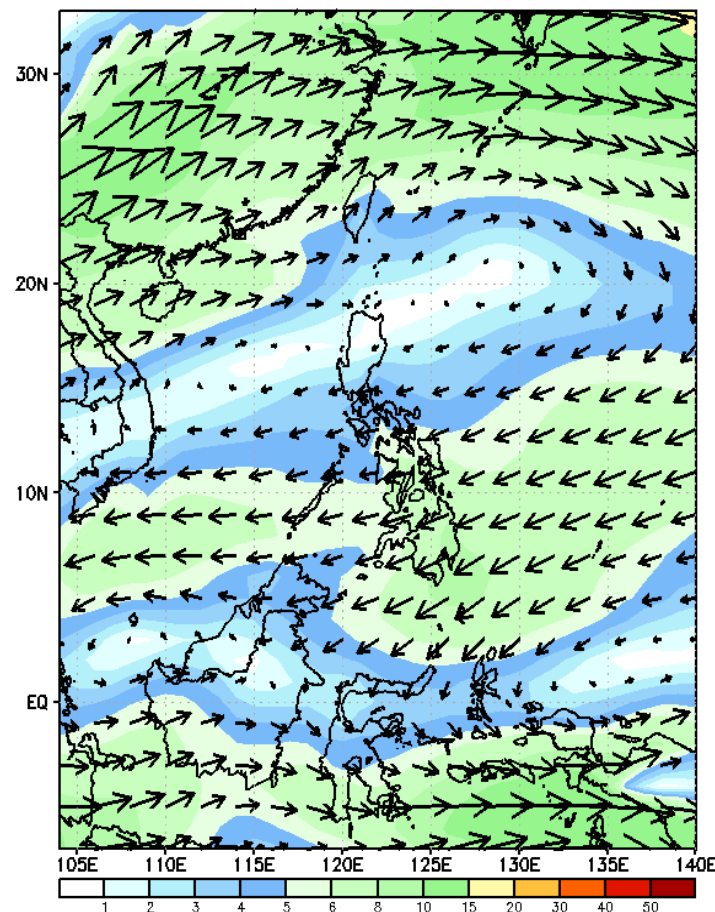
# GEFS Week-1 Forecasts: Wind Forecast

Week 1: January 16-21, 2024

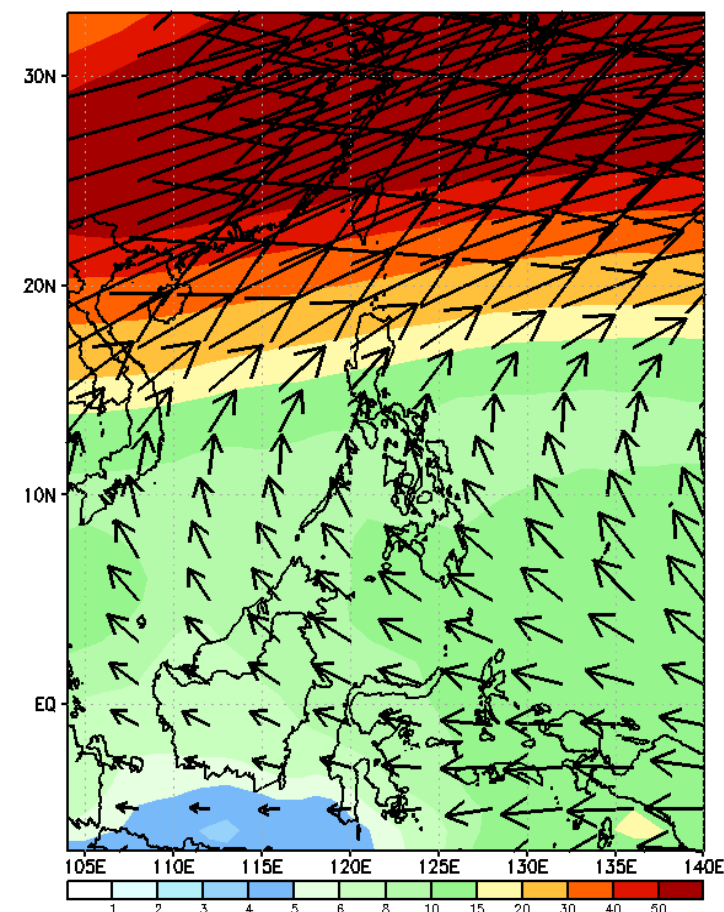
GEFS Week-1 850-hPa Wind Total  
Valid: 20240115 - 20240121



GEFS Week-1 700-hPa Wind Total  
Valid: 20240115 - 20240121



GEFS Week-1 200-hPa Wind Total  
Valid: 20240115 - 20240121



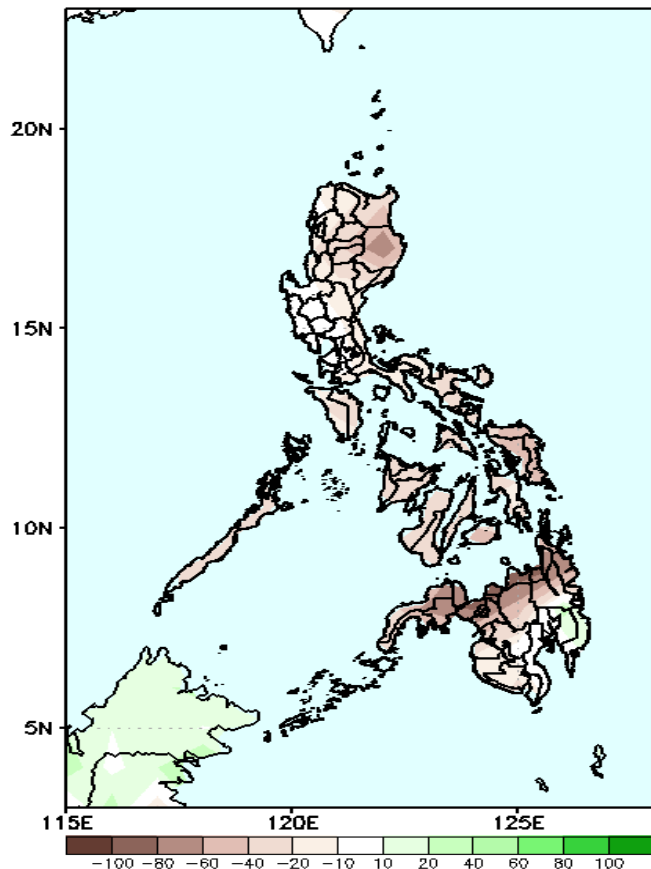
Northeast Monsoon affecting eastern sections of the country.

# Precipitation Anomaly and Exceedance Probability > 25/50 mm



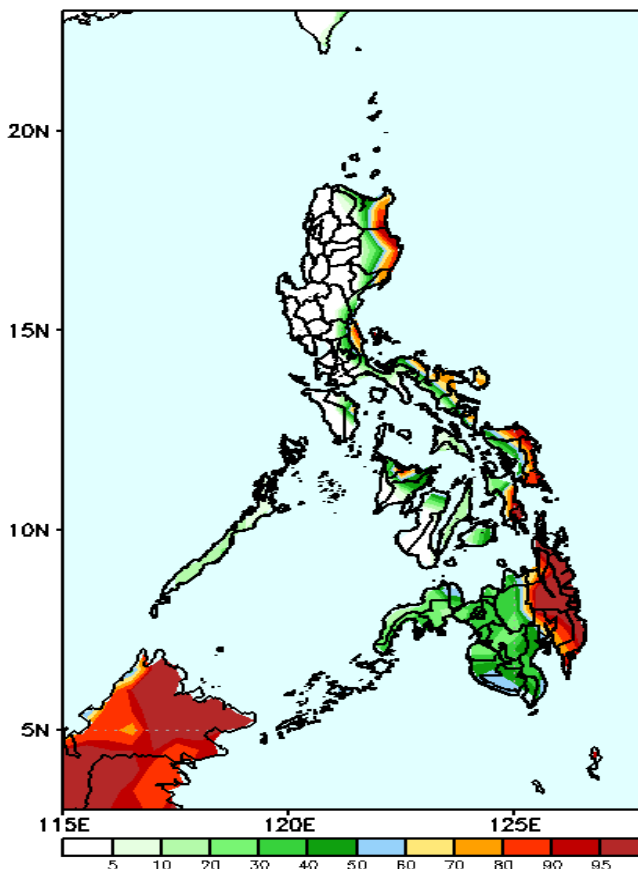
Week 1: January 16-21, 2024

GEFS Week-1 Precip Anomaly  
Valid: 20240115 - 20240121



Rainfall deficit of 40-60mm in most parts of the country. Moreover, a deficit of 80-100mm is forecasted in Northern Mindanao.

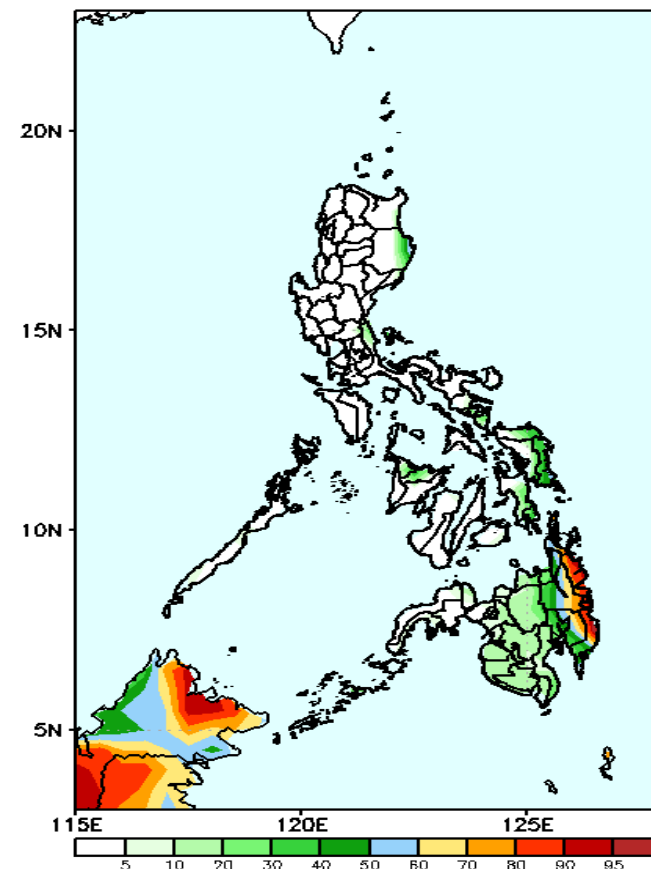
GEFS Week-1 Exceedance Prob. > 25mm  
Valid: 20240115 - 20240121



## Probability to Exceed 25mm

- High to very high over the eastern portion of Isabela, and Cagayan, Eastern Samar, and Eastern Mindanao;
- Moderate to high over Bicol region, the rest of Cagayan and Isabela, Aurora, Quezon, Aklan, Capiz, the rest of Eastern Visayas and Mindanao;
- Low to moderate over the rest of the country.

GEFS Week-1 Exceedance Prob. > 50mm  
Valid: 20240115 - 20240121

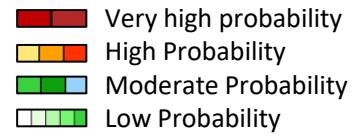


## Probability to Exceed 50mm

- Moderate to high over Eastern Mindanao;
- Low to moderate over the rest of Bicol Region, and Eastern Visayas;
- Low over the rest of the country.

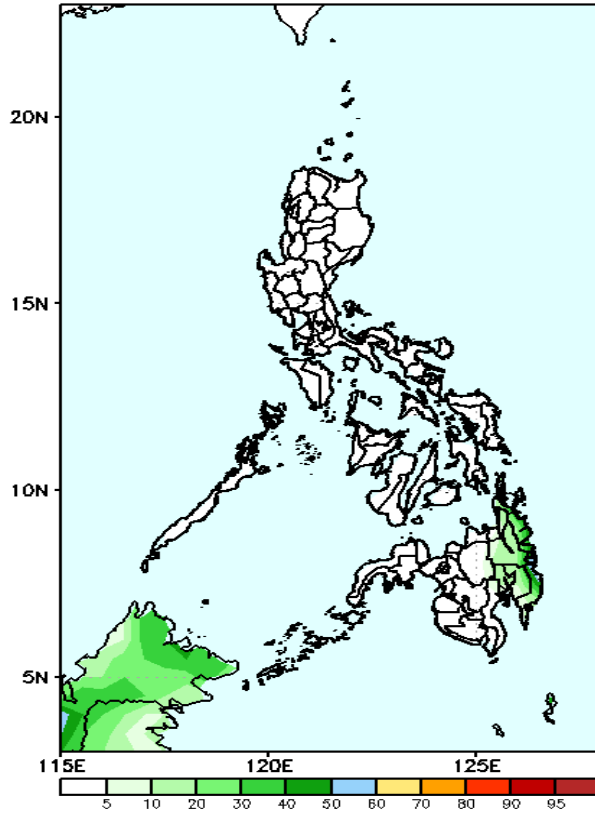


# Exceedance Probability > 100/150/200 mm



Week 1: January 16-21, 2024

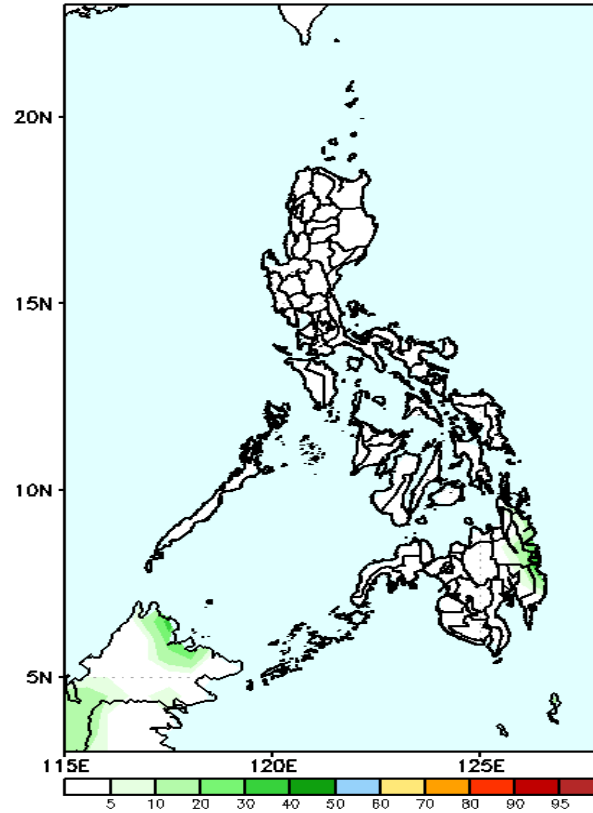
GEFS Week-1 Exceedance Prob. > 100mm  
Valid: 20240115 - 20240121



Probability to Exceed 100mm

- Low across the country.

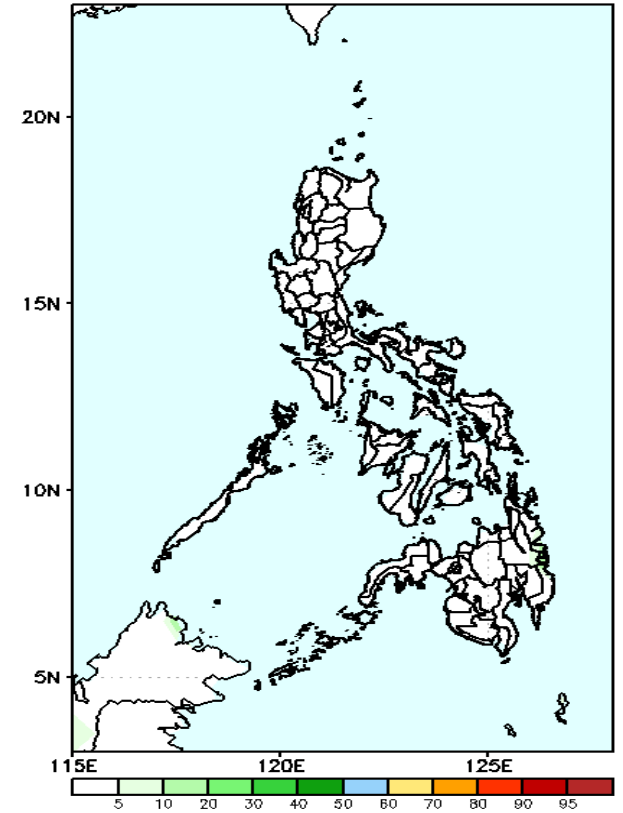
GEFS Week-1 Exceedance Prob. > 150mm  
Valid: 20240115 - 20240121



Probability to Exceed 150mm

- Low across the country.

GEFS Week-1 Exceedance Prob. > 200mm  
Valid: 20240115 - 20240121



Probability to Exceed 200mm

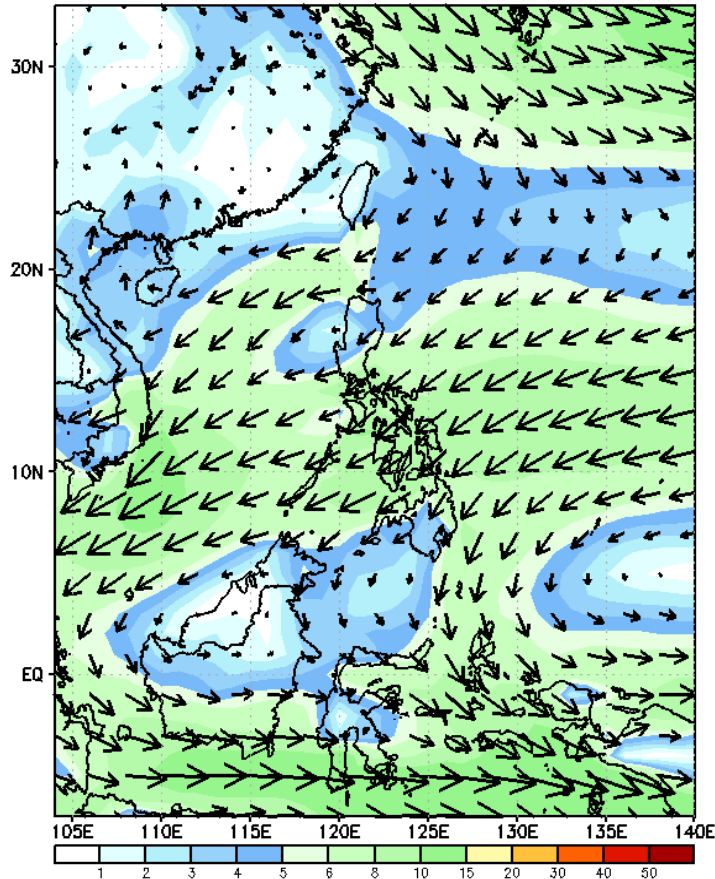
- Low across the country.



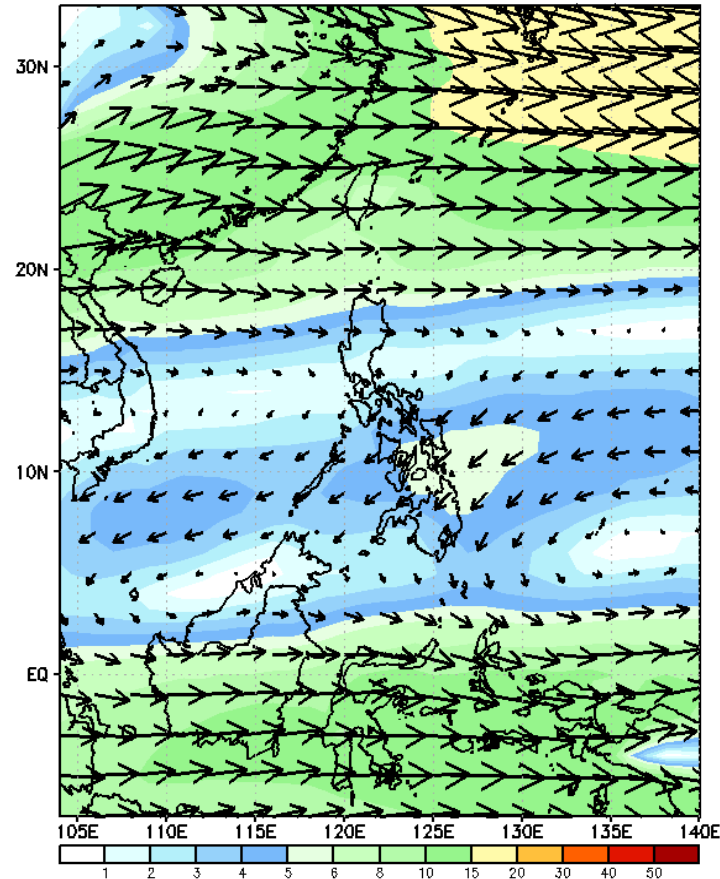
# GEFS Week-2 Forecasts: Wind Forecast

Week 2: January 22-28, 2024

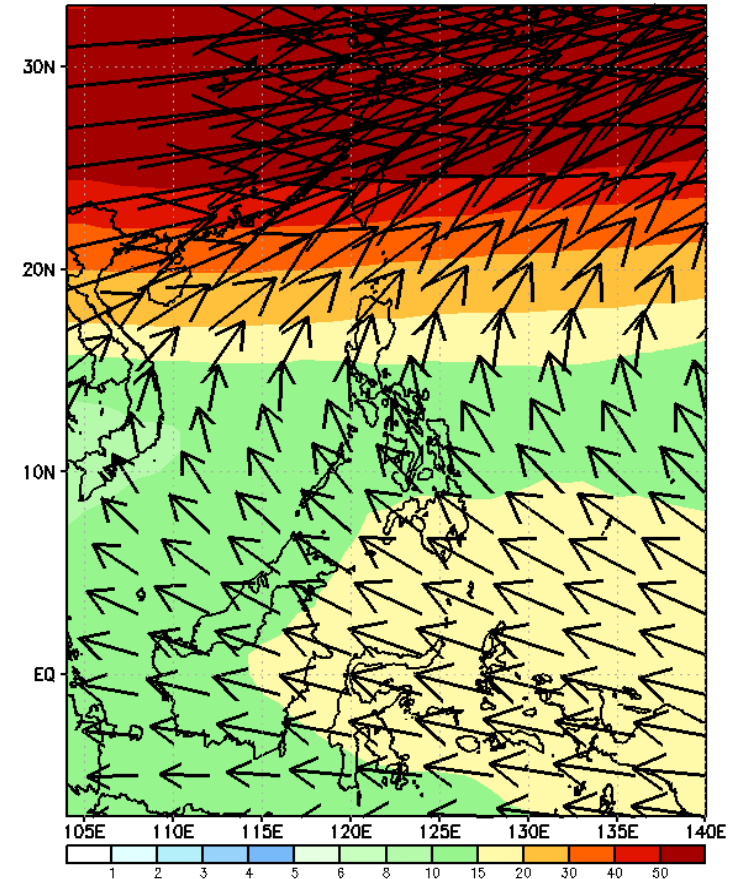
GEFS Week-2 850-hPa Wind Total  
Valid: 20240122 - 20240128



GEFS Week-2 700-hPa Wind Total  
Valid: 20240122 - 20240128



GEFS Week-2 200-hPa Wind Total  
Valid: 20240122 - 20240128



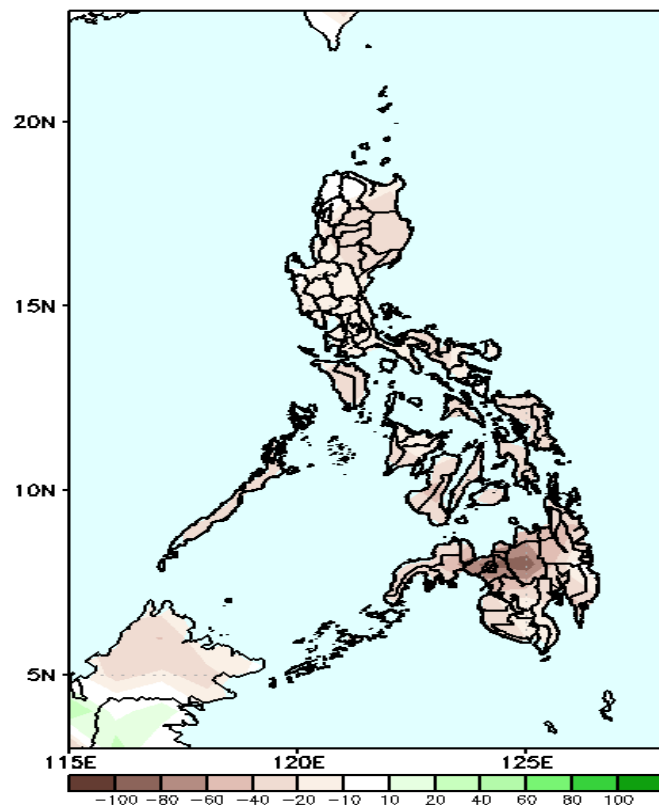
Northeast Monsoon affecting eastern sections of Luzon and Visayas; Easterlies affecting Mindanao.

# Precipitation Anomaly and Exceedance Probability > 25/50 mm



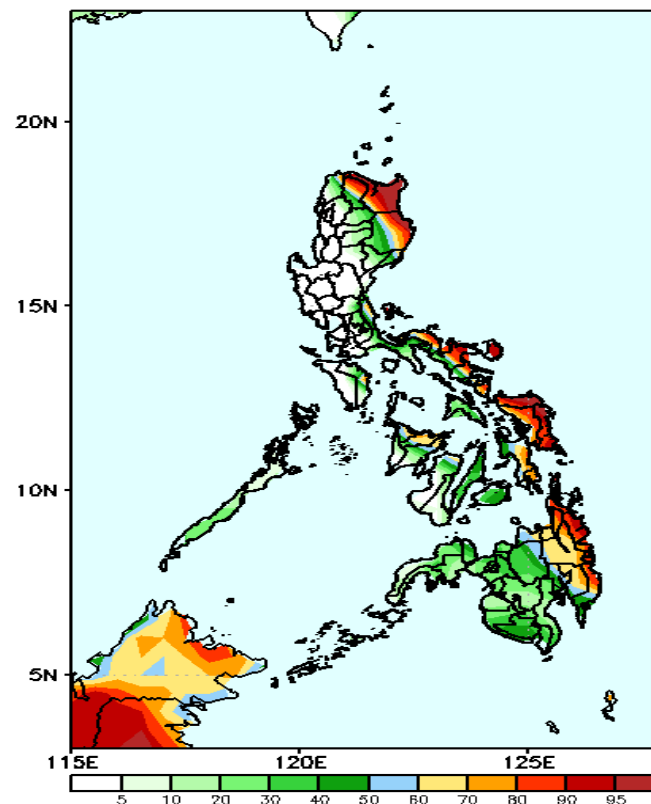
Week 2: January 22-28, 2024

GEFS Week-2 Precip. Anomaly  
Valid: 20240122 - 20240128



Rainfall deficit of 40-80mm in most parts of the country.

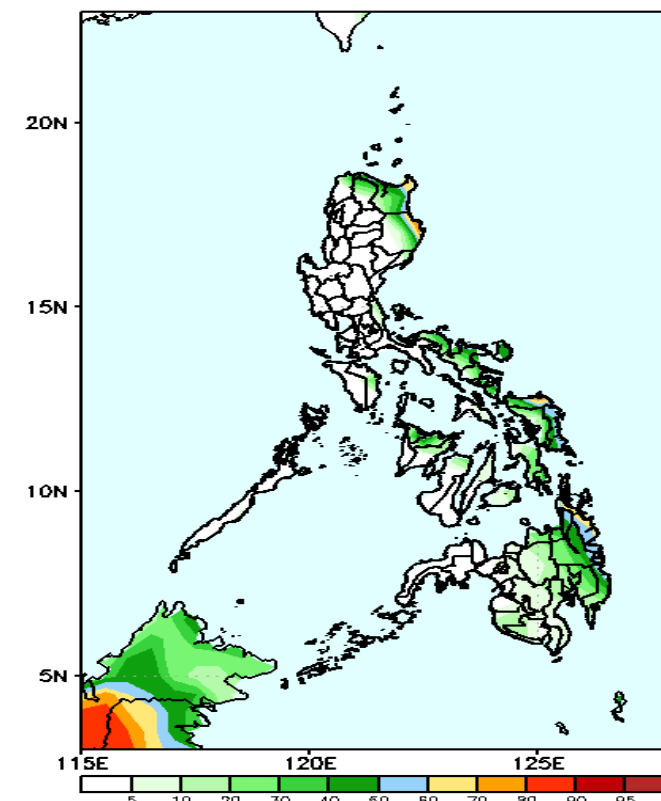
GEFS Week-2 Exceedance Prob. > 25mm  
Valid: 20240122 - 20240128



## Probability to Exceed 25mm

- High to very high over Cagayan, eastern portion of Isabela and Bicol Region, Samar provinces and Surigao provinces;
- Moderate to high over Apayao, the rest of Isabela and Bicol Region, Leyte provinces, northern portion of Western Visayas and the rest of Mindanao.
- Low to moderate over the rest of the country.

GEFS Week-2 Exceedance Prob. > 50mm  
Valid: 20240122 - 20240128



## Probability to Exceed 50mm

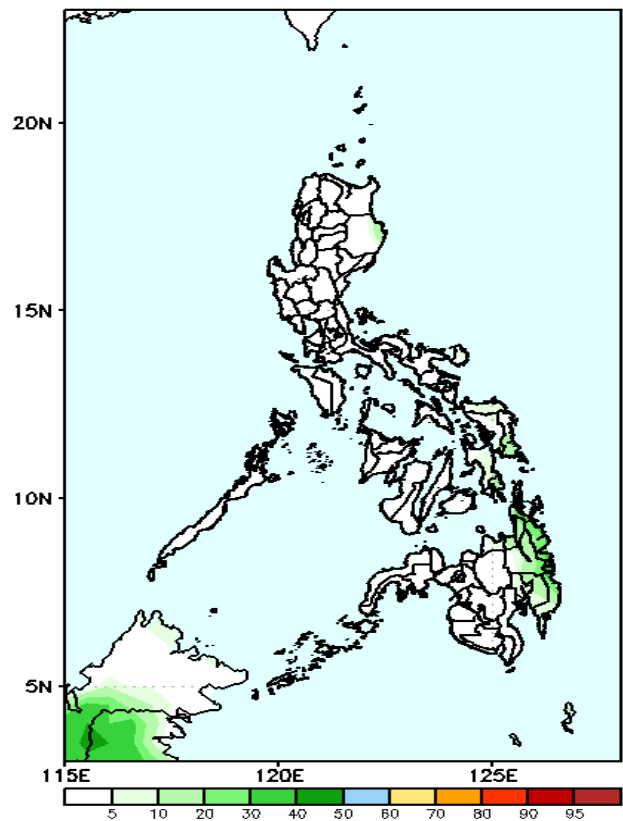
- Moderate to high over the eastern section of Cagayan and Isabela, Northern Samar and Surigao provinces;
- Low to moderate over Bicol Region, the rest of Eastern Visayas and Mindanao.
- Low over the rest of the country.

# Exceedance Probability > 100/150/200 mm

Week 2: January 22-28, 2024

- Very high probability
- High Probability
- Moderate Probability
- Low Probability

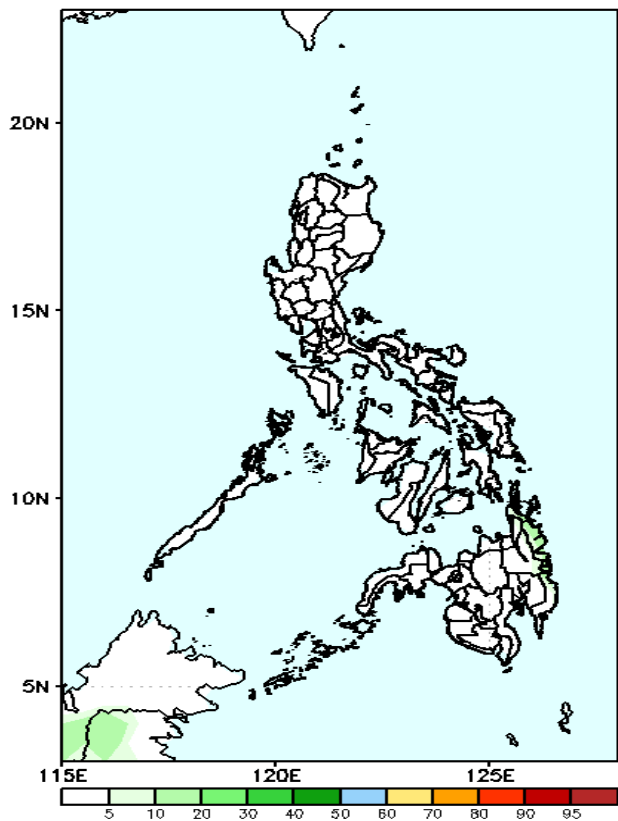
GEFS Week-2 Exceedance Prob. > 100mm  
Valid: 20240122 – 20240128



**Probability to Exceed 100mm**

- Low across the country.

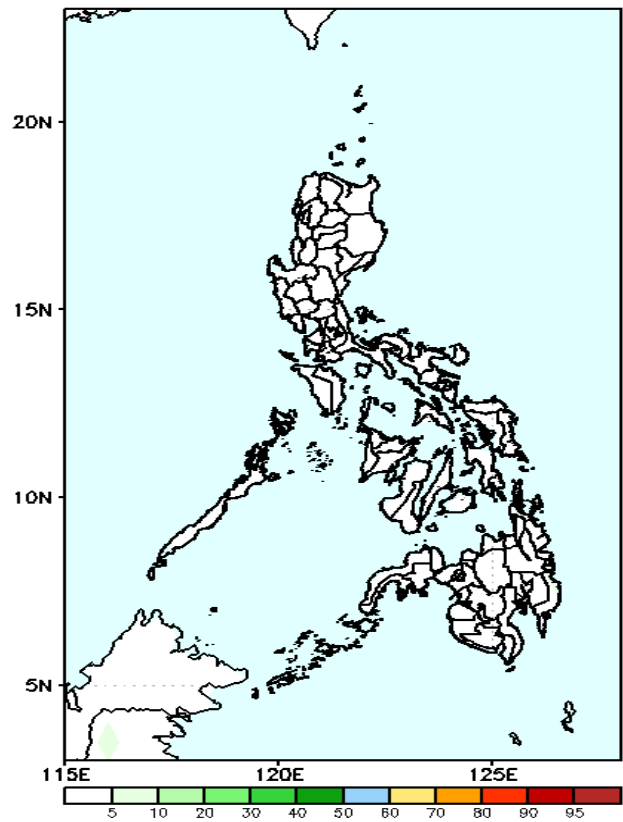
GEFS Week-2 Exceedance Prob. > 150mm  
Valid: 20240122 – 20240128



**Probability to Exceed 150mm**

- Low across the country.

GEFS Week-2 Exceedance Prob. > 200mm  
Valid: 20240122 – 20240128

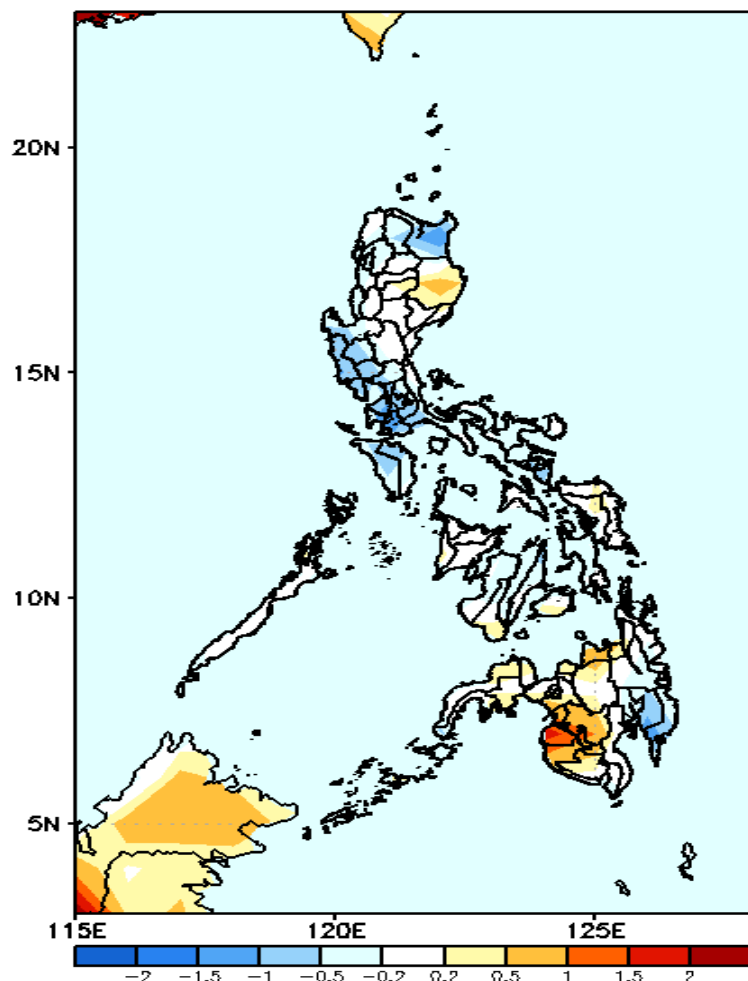


**Probability to Exceed 200mm**

- Low across the country.

# GEFS Week-1 & 2 Forecasts: T2m Anomaly

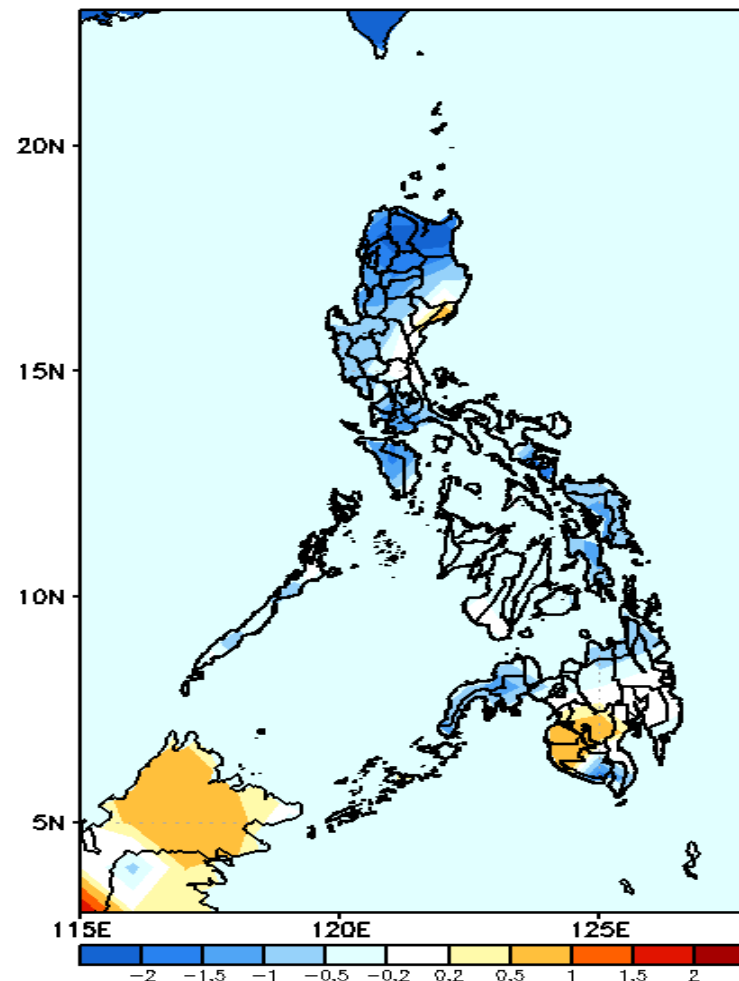
GEFS Week-1 T2m Anomaly  
Valid: 20240115 - 20240121



## 2m Temperature Week 1: January 16-21, 2024

Near to slightly cooler than average surface air temperature average will likely be experienced in most parts country except in Isabela, Misamis Oriental, Maguindanao, Sultan Kudarat, and South Cotabato where slightly warmer to warmer than average temperature is

GEFS Week-2 T2m Anomaly  
Valid: 20240122 - 20240128



## 2m Temperature Week 1: January 22-28, 2024

Near to cooler than average surface air temperature average will likely be experienced in most parts of the country except in Maguindanao, Sultan Kudarat, and South Cotabato where slightly warmer than average temperature is expected.