



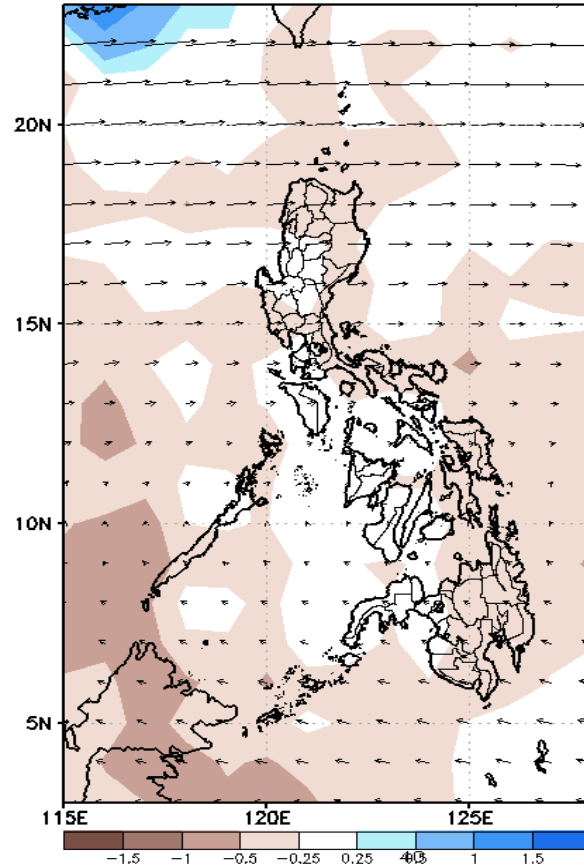
Week 1 & Week 2 Forecast for the Philippines using GEFS Model



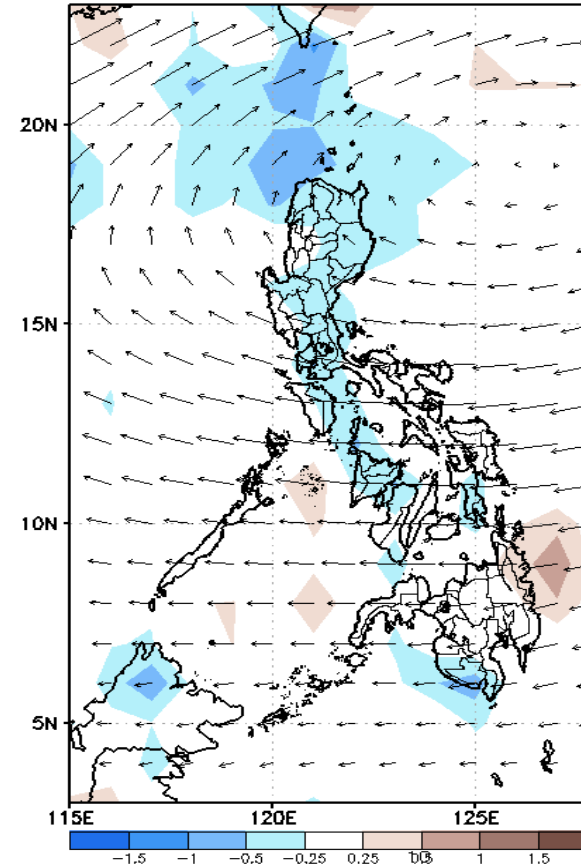
GEFS Week-1 Forecasts: Wind Forecast

Week 1: February 16-22, 2024

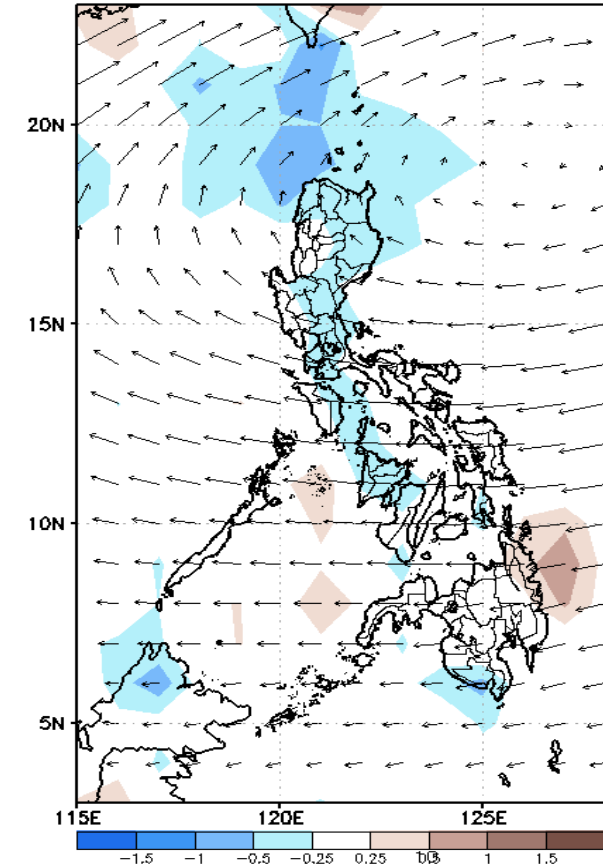
GEFS Week-1 200-hPa Divergence and Wind Anom
Valid: 20240216 - 20240222



GEFS Week-1 700-hPa Divergence and Wind Anom
Valid: 20240216 - 20240222



GEFS Week-1 850-hPa Divergence and Wind Anom
Valid: 20240216 - 20240222



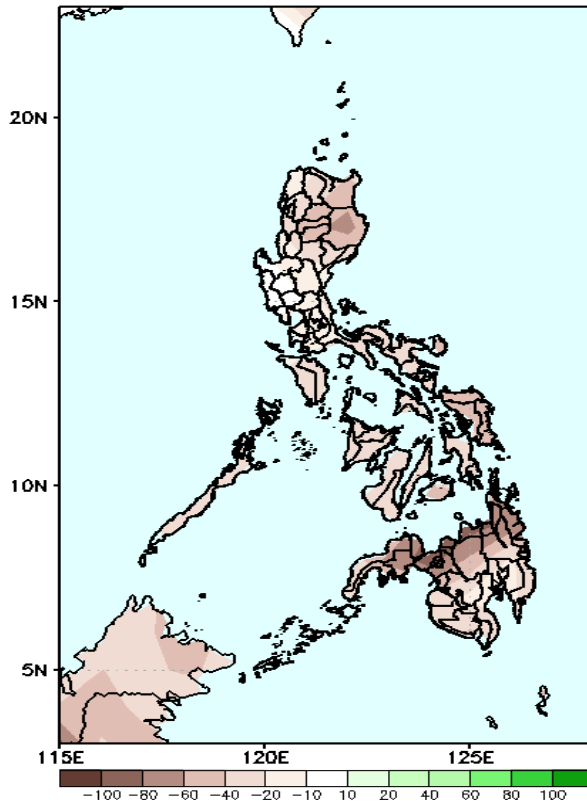
Easterlies affecting most parts of the country.

Precipitation Anomaly and Exceedance Probability > 25/50 mm

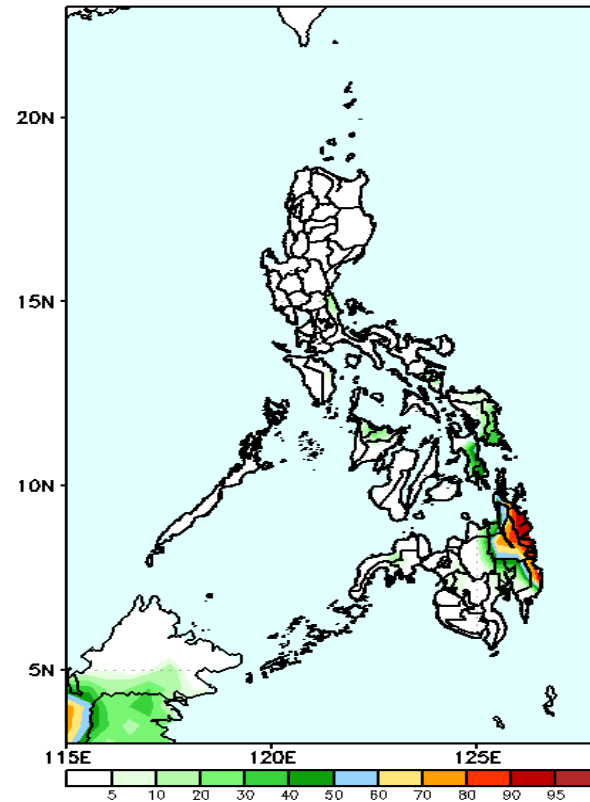


Week 1: February 16-22, 2024

GEFS Week-1 Precip Anomaly
Valid: 20240216 - 20240222



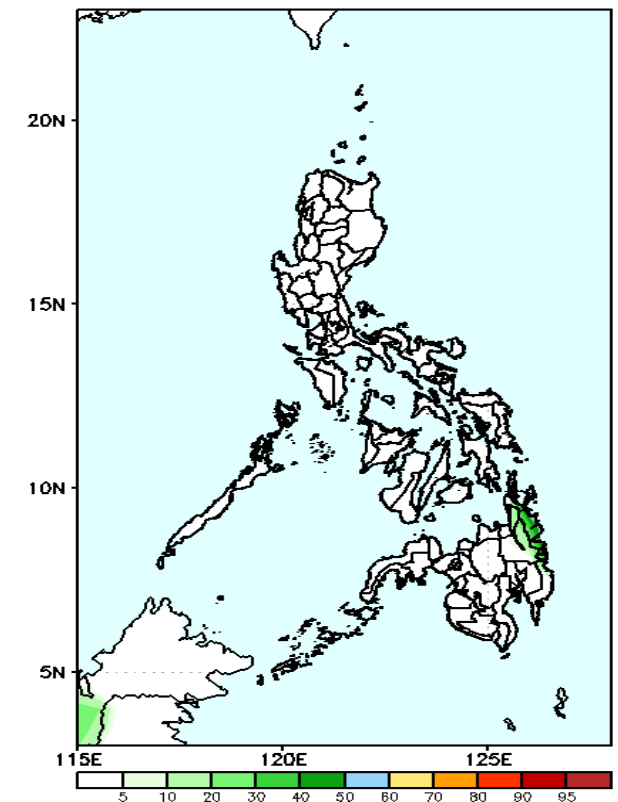
GEFS Week-1 Exceedance Prob. > 25mm
Valid: 20240216 - 20240222



Probability to Exceed 25mm

- Moderate to high over Southern Leyte, Caraga region, and the northern portion of Davao de Oro;
- Low to moderate over Eastern Samar and Northern portion of Davao Del Norte;
- Low over the rest of the country.

GEFS Week-1 Exceedance Prob. > 50mm
Valid: 20240216 - 20240222



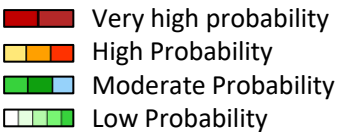
Probability to Exceed 50 mm

- Low across the country.

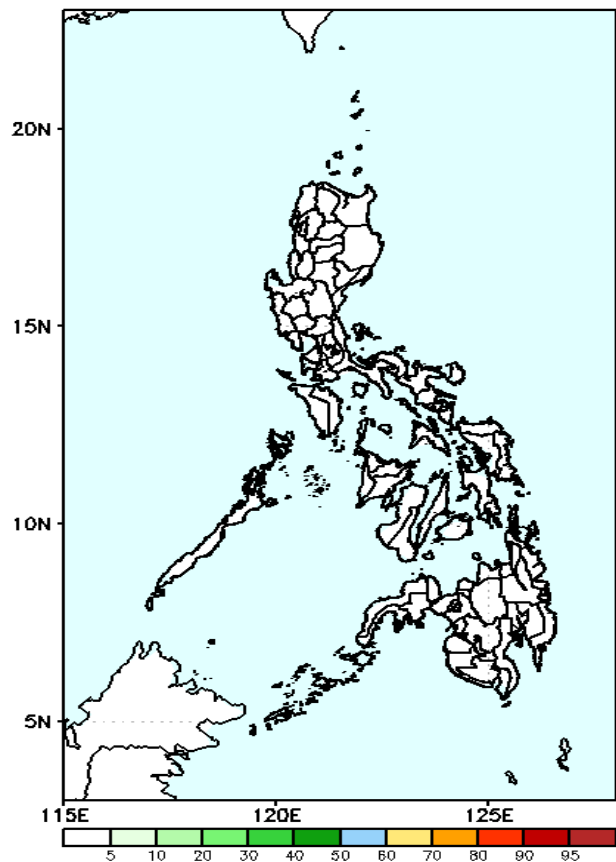
Rainfall deficit of 40-100mm in most parts of the country is likely.

Exceedance Probability > 100/150/200 mm

Week 1: February 16-22, 2024

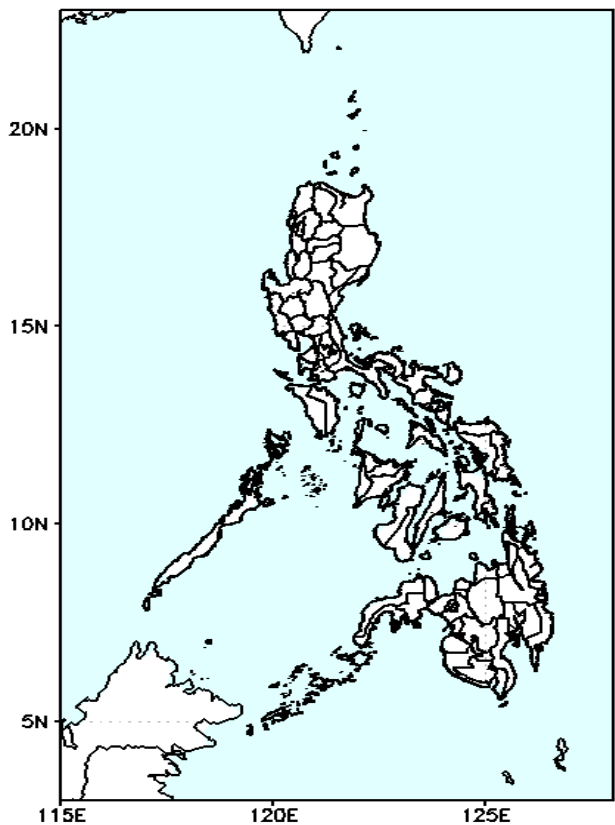


GEFS Week-1 Exceedance Prob. > 100mm
Valid: 20240216 – 20240222



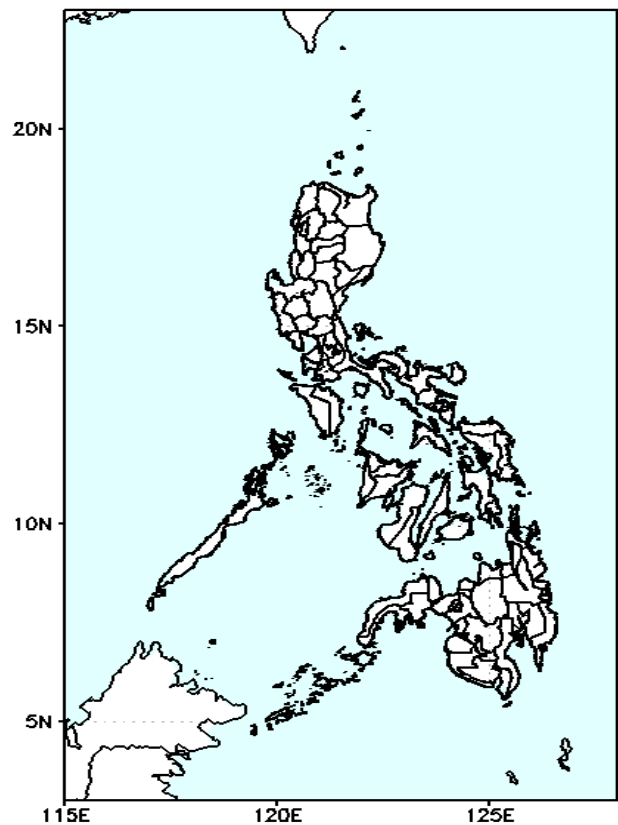
Probability to Exceed 100mm
• Low across the country.

GEFS Week-1 Exceedance Prob. > 150mm
Valid: 20240216 – 20240222



Probability to Exceed 150mm
• Low across the country.

GEFS Week-1 Exceedance Prob. > 200mm
Valid: 20240216 – 20240222

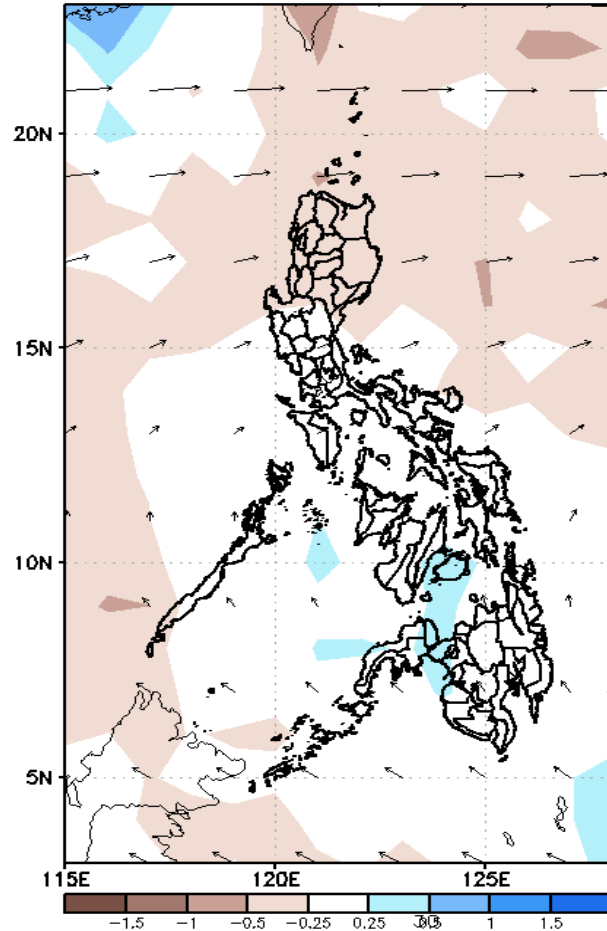


Probability to Exceed 200mm
• Low across the country.

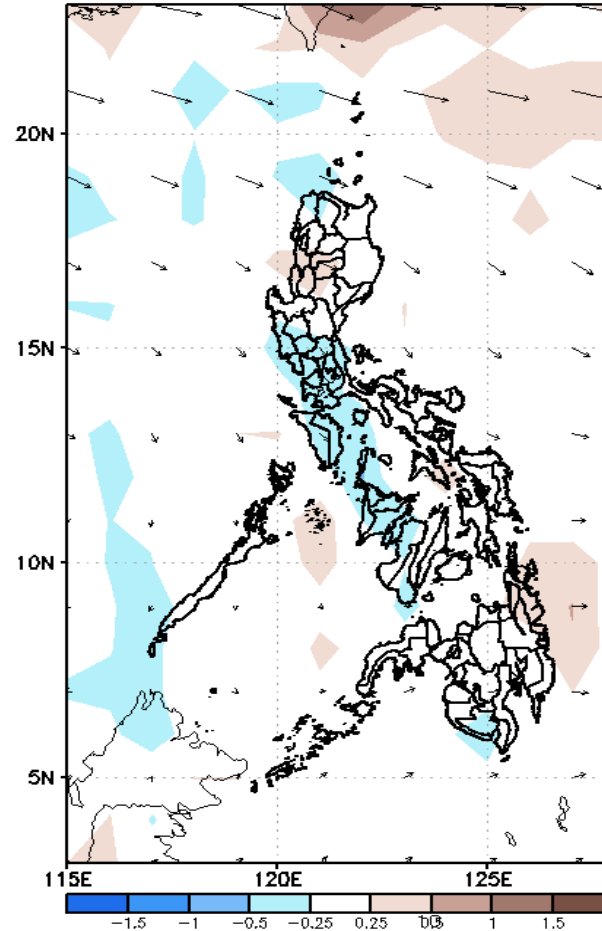
GEFS Week-2 Forecasts: Wind Forecast

Week 2: February 23-29, 2024

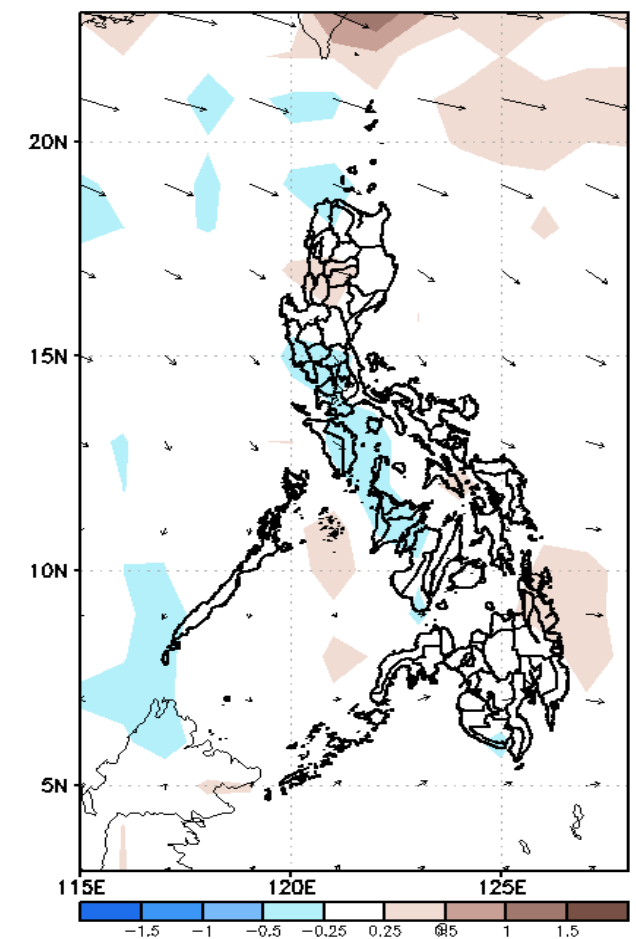
GEFS week-2 200-hPa Divergence and Wind Anom
Valid: 20240223 - 20240229



GEFS Week-2 700-hPa Divergence and Wind Anom
Valid: 20240223 - 20240229

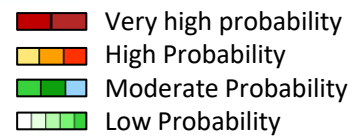


GEFS Week-2 850-hPa Divergence and Wind Anom
Valid: 20240223 - 20240229



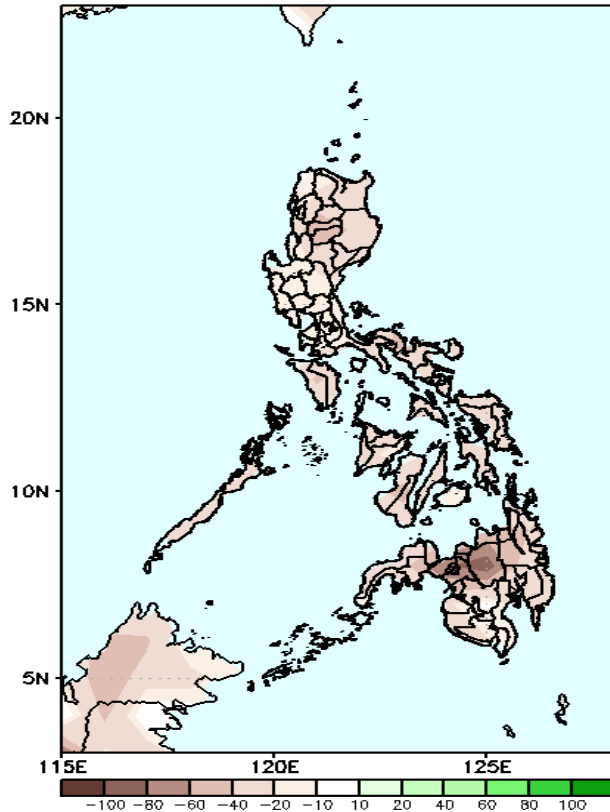
Northeast Monsoon will likely affect Northern Luzon; Easterlies affecting the rest of the country.

Precipitation Anomaly and Exceedance Probability > 25/50 mm



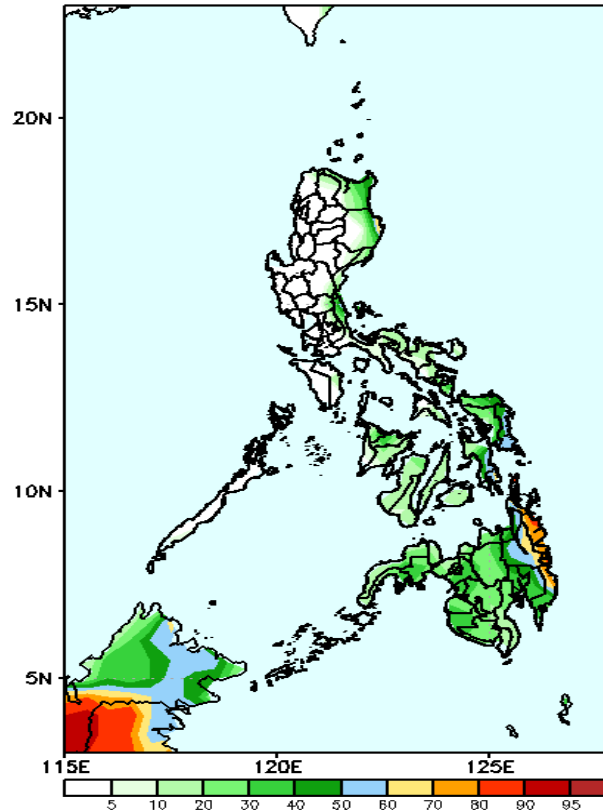
Week 2: February 23-29, 2024

GEFS Week-2 Precip Anomaly
Valid: 20240223 - 20240229



Rainfall deficit of 20-80mm in most parts of the country is likely.

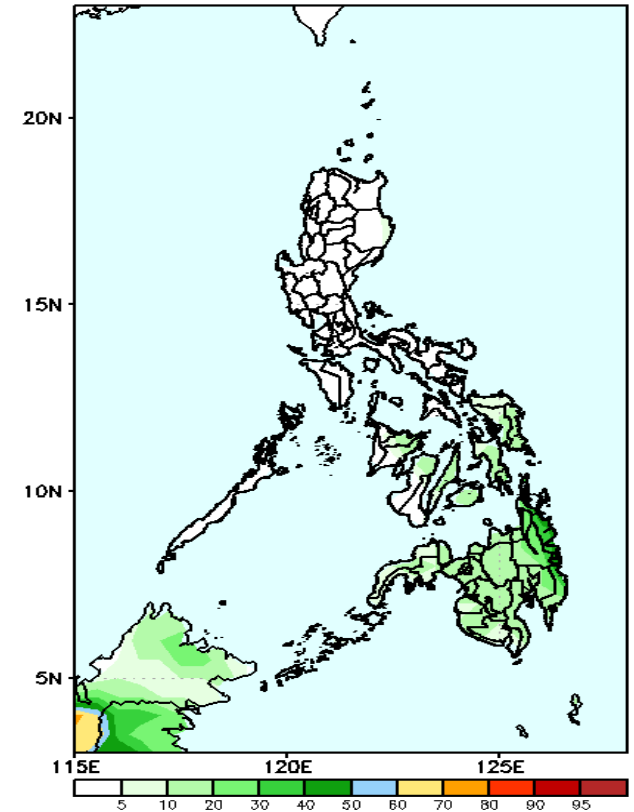
GEFS Week-2 Exceedance Prob. > 25mm
Valid: 20240223 - 20240229



Probability to Exceed 25mm

- Moderate to high over the easternmost portion of Cagayan and Isabela, Southern Leyte, Caraga region, and the northern portion of Davao de Oro;
- Low to moderate over Eastern and Northern Samar and the rest of Mindanao;
- Low over the rest of the country.

GEFS Week-2 Exceedance Prob. > 50mm
Valid: 20240223 - 20240229



Probability to Exceed 50mm

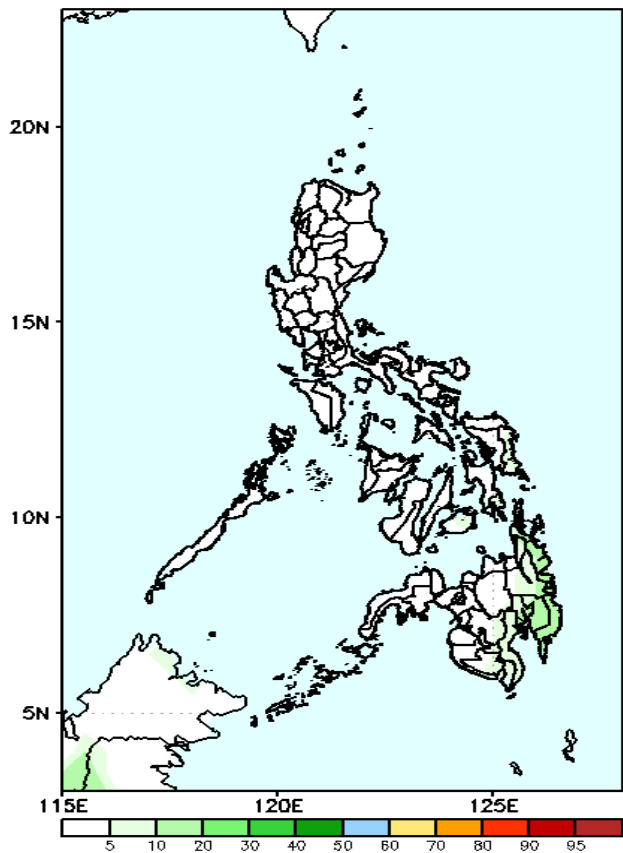
- Low to moderate over Caraga;
- Low over the rest of the country.

Exceedance Probability > 100/150/200 mm

Week 2: February 23-29, 2024

- Very high probability
- High Probability
- Moderate Probability
- Low Probability

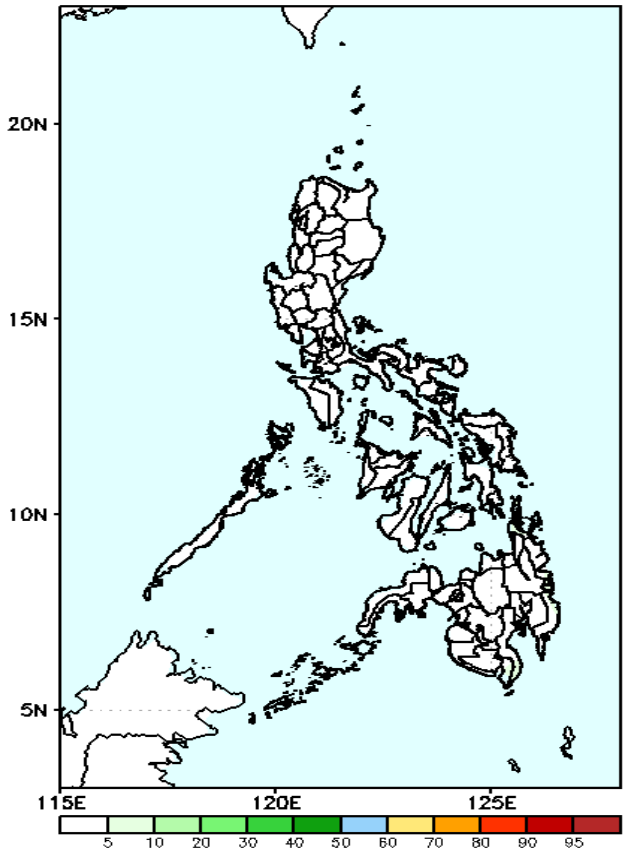
GEFS Week-2 Exceedance Prob. > 100mm
Valid: 20240223 - 20240229



Probability to Exceed 100mm

- Low across the country.

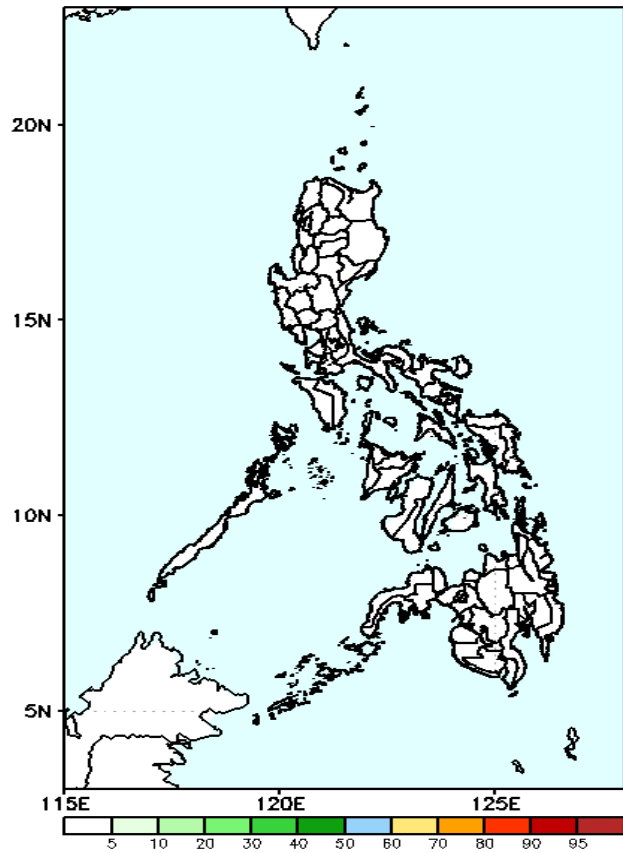
GEFS Week-2 Exceedance Prob. > 150mm
Valid: 20240223 - 20240229



Probability to Exceed 150mm

- Low across the country.

GEFS Week-2 Exceedance Prob. > 200mm
Valid: 20240223 - 20240229

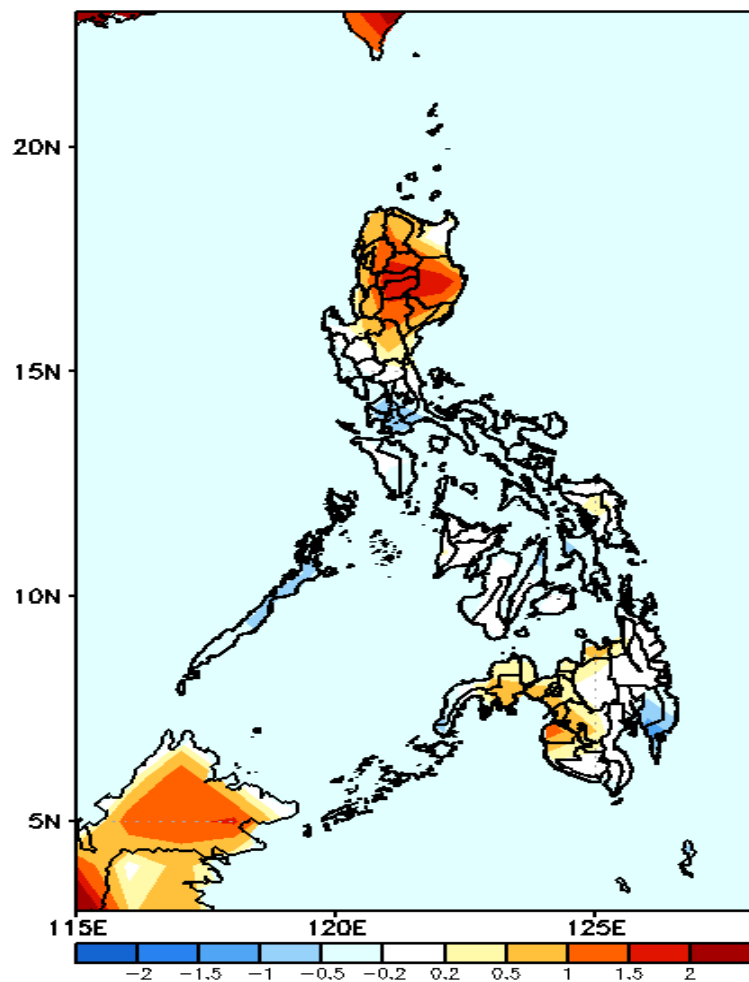


Probability to Exceed 200mm

- Low across the country.

GEFS Week-1 & 2 Forecasts: T2m Anomaly

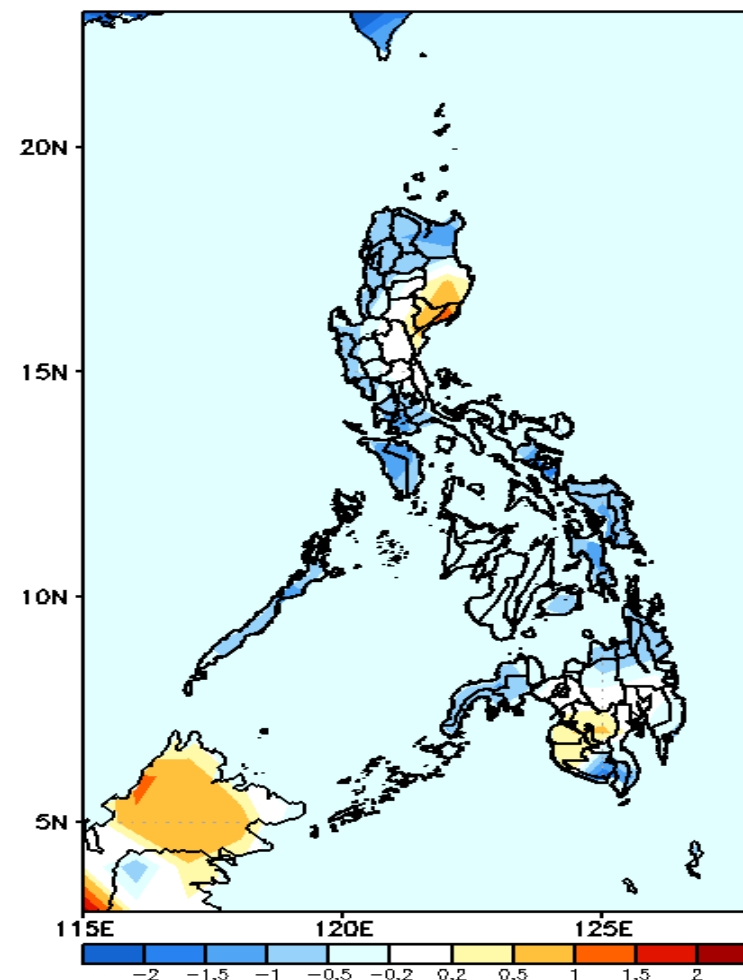
GEFS Week-1 T2m Anomaly
Valid: 20240216 - 20240222



2m Temperature Week 1: February 16-22, 2024

Slightly warmer to warmer than average surface air temperature will likely be experienced in most parts of northern Luzon, Misamis Oriental and western Mindanao while near to slightly cooler temperature is expected for the rest of the country.

GEFS Week-2 T2m Anomaly
Valid: 20240223 - 20240229



2m Temperature Week 2: February 23-29, 2024

Near to cooler than average surface air temperature will likely be experienced in most parts of the country except in southern Isabela, Aurora, and Quirino where slightly warmer to warmer than average temperature is expected.