



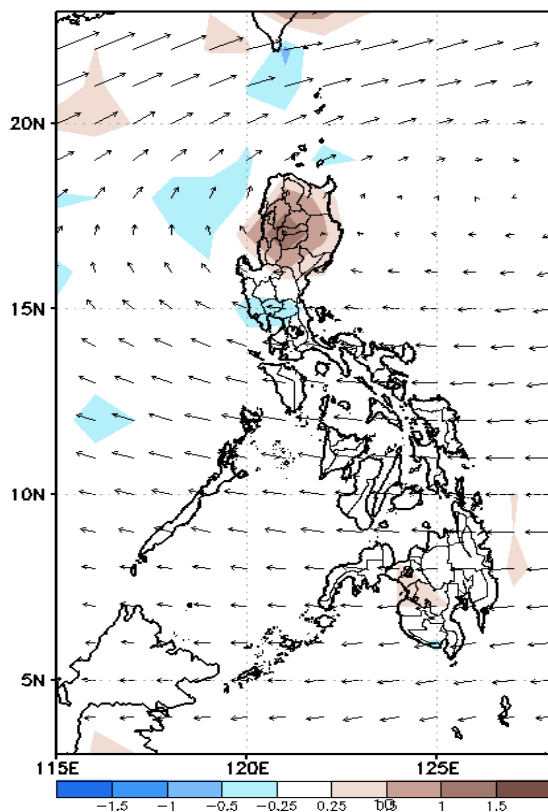
Week 1 & Week 2 Forecast for the Philippines using GEFS Model



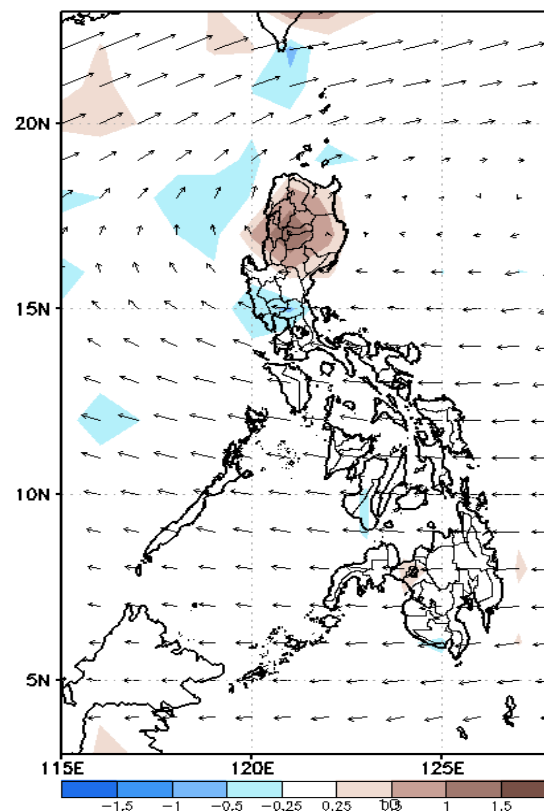
GEFS Week-1 Wind Forecasts:

Week 1: April 17-23, 2024

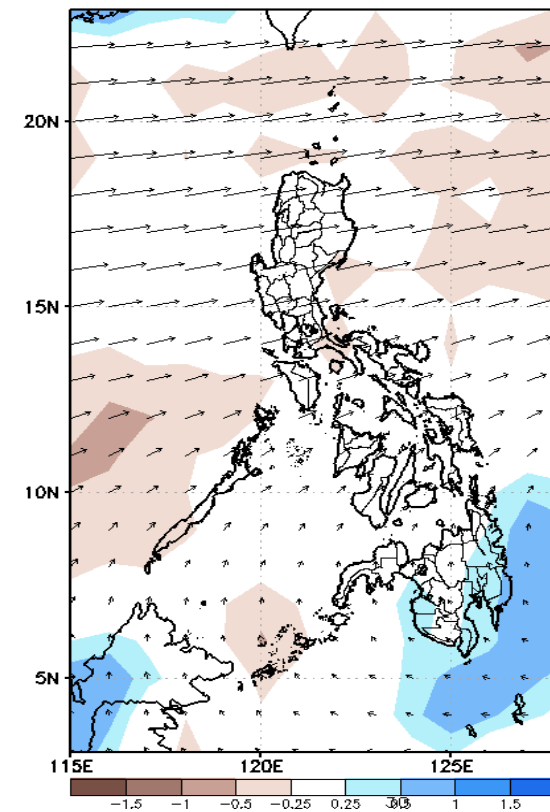
GEFS Week-1 850-hPa Divergence and Wind Anomaly
Valid: 20240417 - 20240423



GEFS Week-1 700-hPa Divergence and Wind Anomaly
Valid: 20240417 - 20240423



GEFS Week-1 200-hPa Divergence and Wind Anomaly
Valid: 20240417 - 20240423



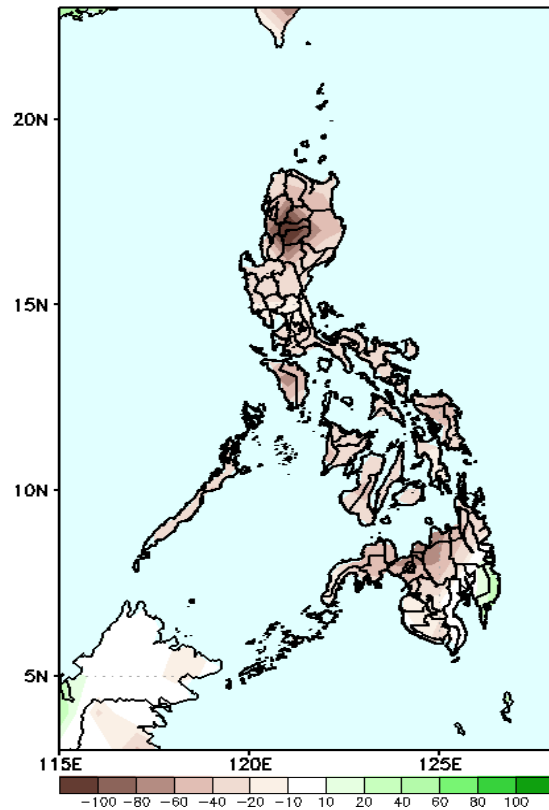
Easterlies continuously affect most parts of the country. Expect dry and warm days during the forecast period.

Precipitation Anomaly and Exceedance Probability > 25/50 mm



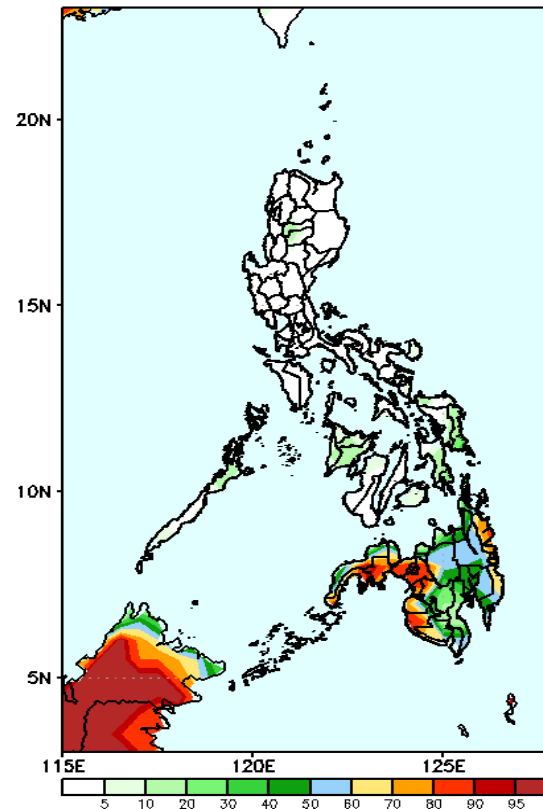
Week 1: April 17-23, 2024

GEFS Week-1 Precip Anomaly
Valid: 20240417 - 20240423



Rainfall deficit of 20-80mm in most parts of the country.

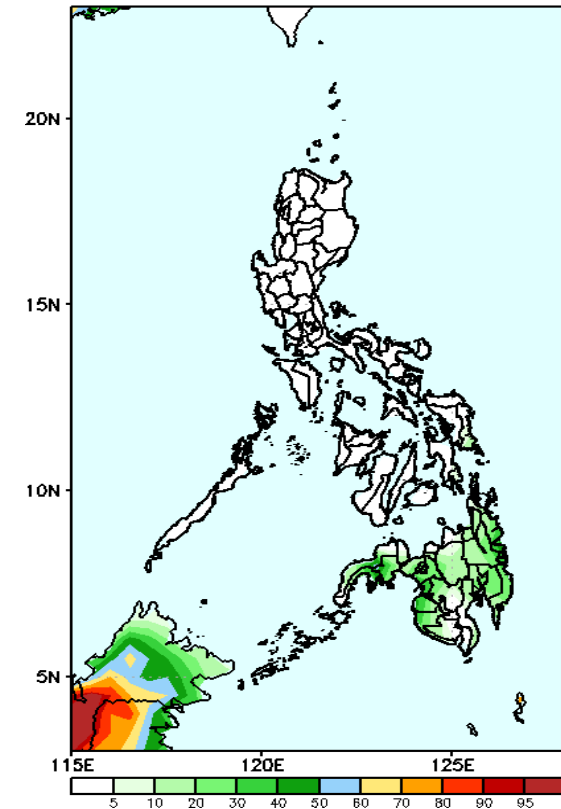
GEFS Week-1 Exceedance Prob. > 25mm
Valid: 20240417 - 20240423



Probability to Exceed 25mm

- Moderate to High over the western portion of Mindanao, Surigao del Sur and Davao Oriental;
- Low to moderate over the rest of Mindanao
- Low over the rest of the country.

GEFS Week-1 Exceedance Prob. > 50mm
Valid: 20240417 - 20240423



Probability to Exceed 50mm

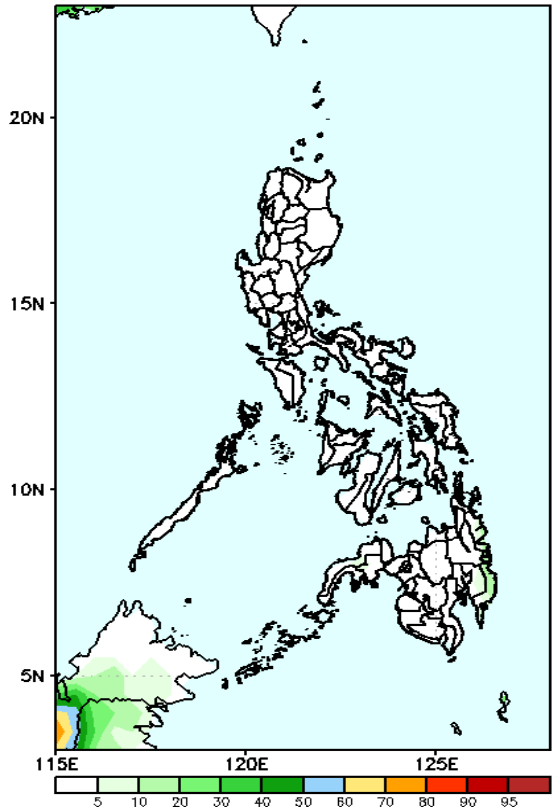
- Low to moderate over Mindanao.
- Low over the rest of the country.

Exceedance Probability > 100/150/200 mm

Week 1: April 17-23, 2024

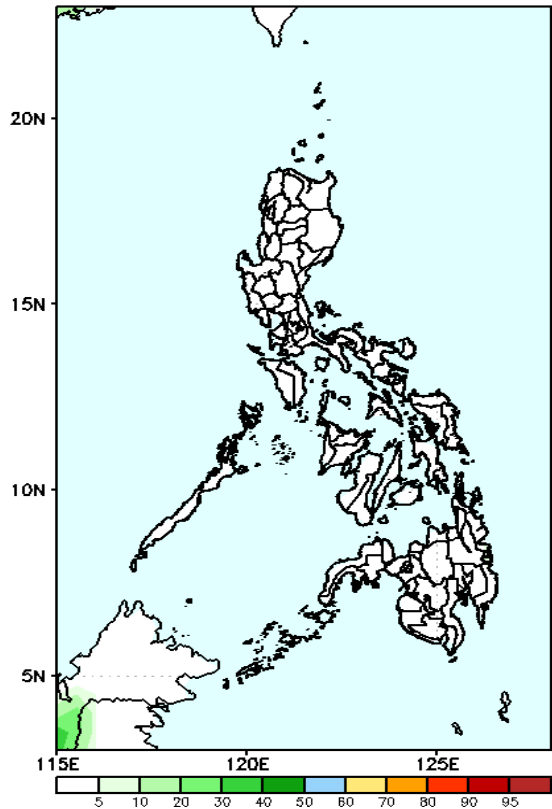
- Very high probability
- High Probability
- Moderate Probability
- Low Probability

GEFS Week-1 Exceedance Prob. > 100mm
Valid: 20240417 – 20240423



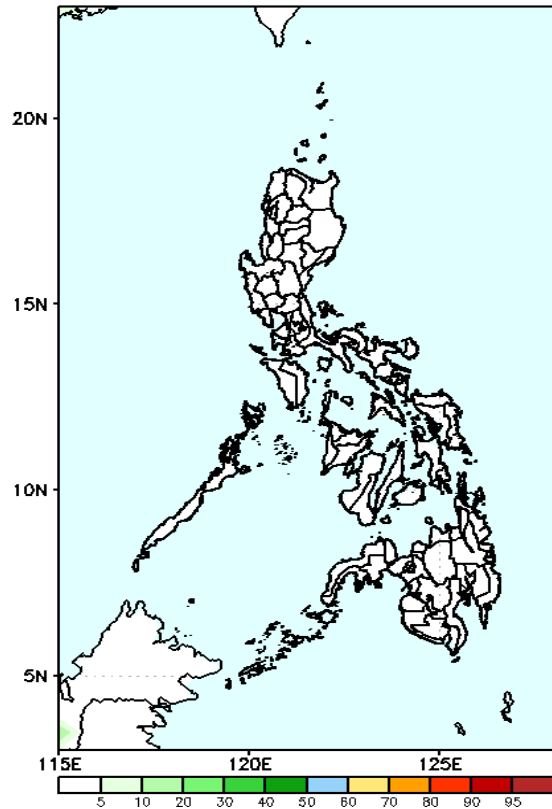
Probability to Exceed 100mm
• Low across the country.

GEFS Week-1 Exceedance Prob. > 150mm
Valid: 20240417 – 20240423



Probability to Exceed 150mm
• Low across the country.

GEFS Week-1 Exceedance Prob. > 200mm
Valid: 20240417 – 20240423

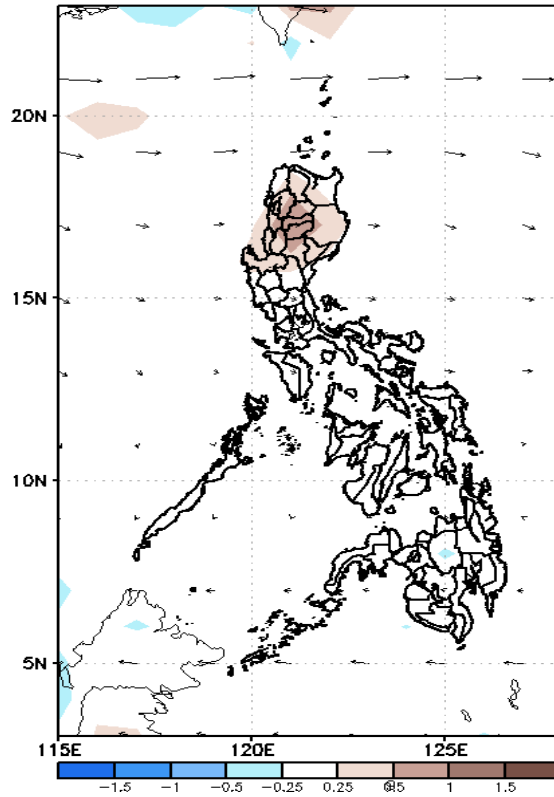


Probability to Exceed 200mm
• Low across the country.

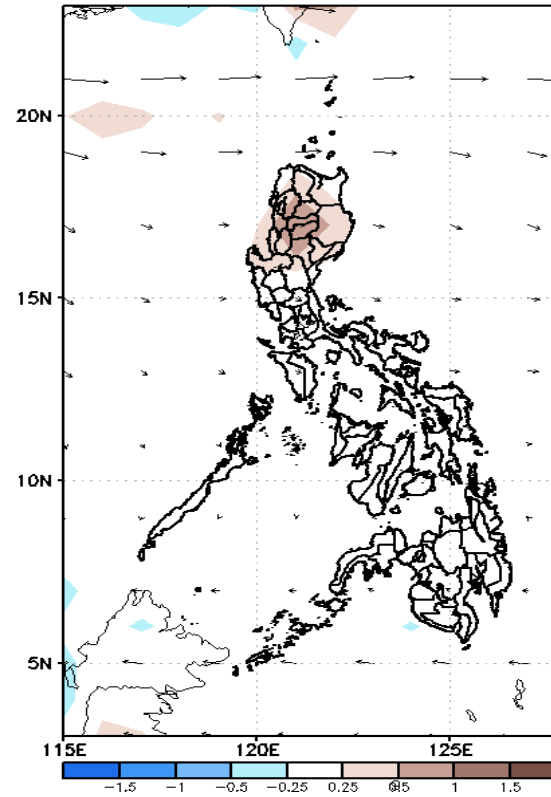
GEFS Week-2 Wind Forecasts:

Week 2: Apr 24-30, 2024

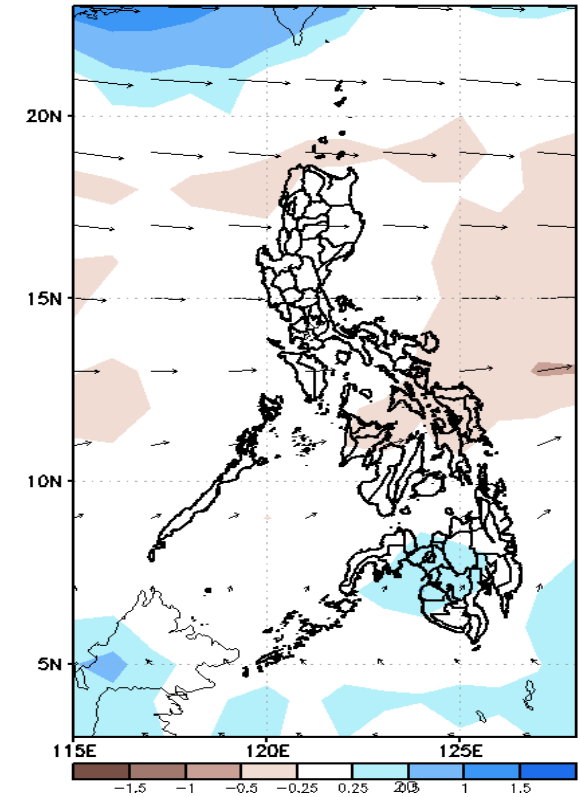
GEFS Week-2 850-hPa Divergence and Wind Anomaly
Valid: 20240424 - 20240430



GEFS Week-2 700-hPa Divergence and Wind Anomaly
Valid: 20240424 - 20240430

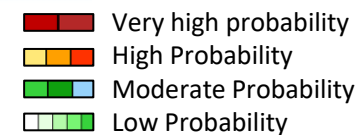


GEFS week-2 200-hPa Divergence and Wind Anomaly
Valid: 20240424 - 20240430

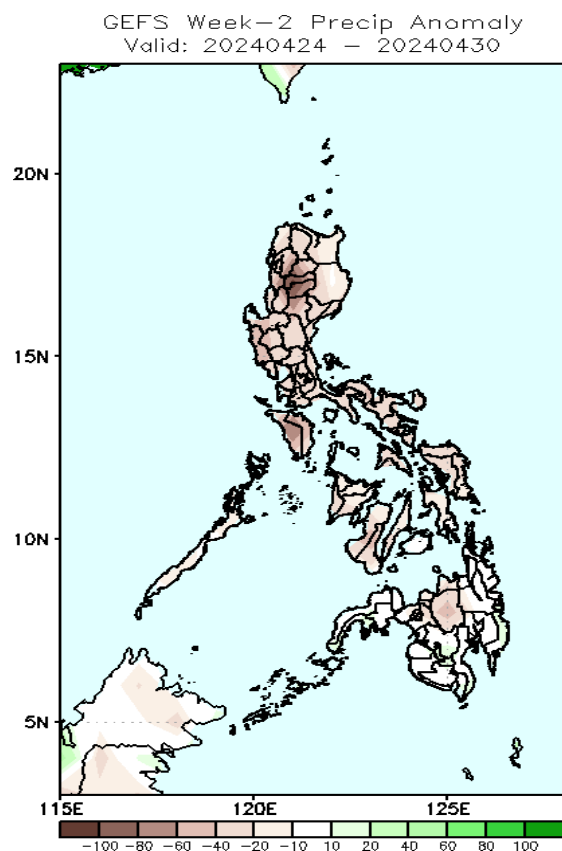


Easterlies will likely prevail in most parts of the country. Expect dry and warm days during the forecast period.

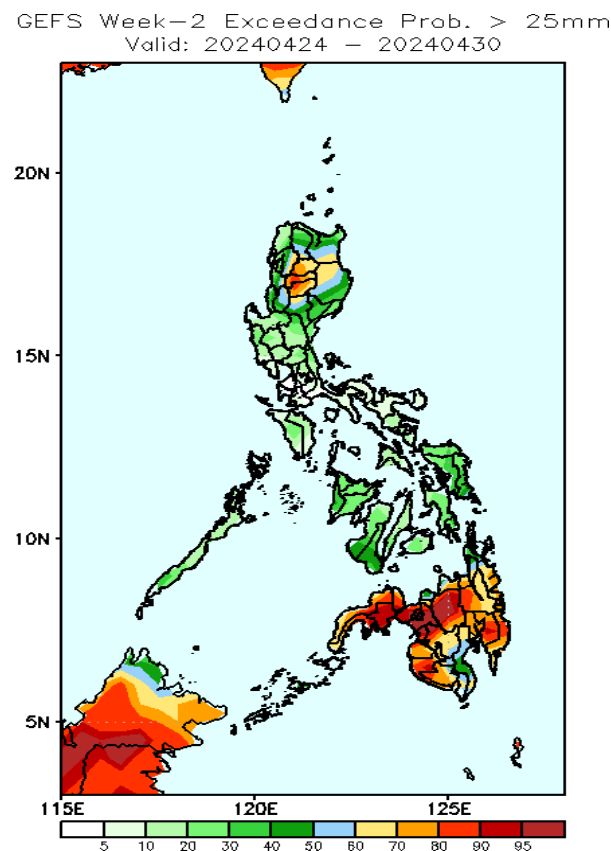
Precipitation Anomaly and Exceedance Probability > 25/50 mm



Week 2: Apr 24-30, 2024

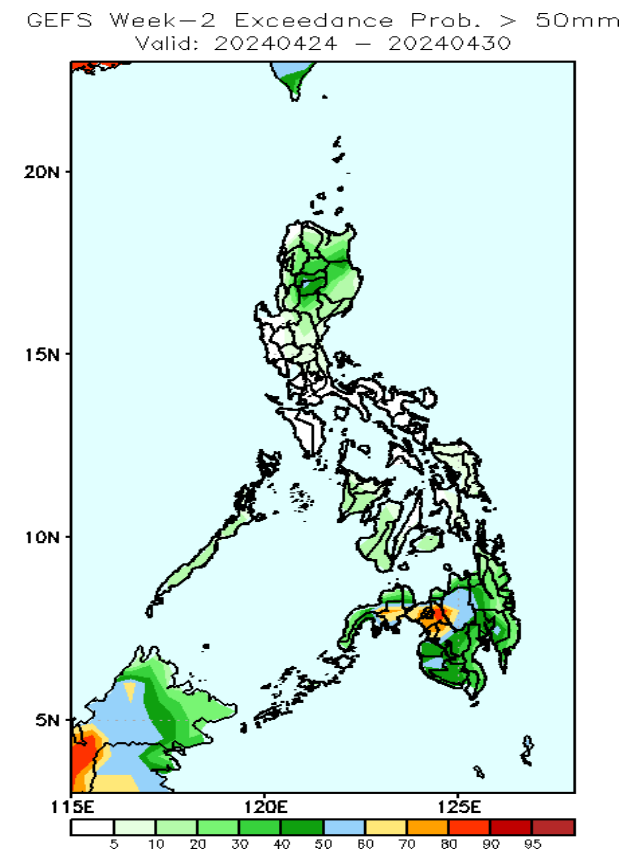


Rainfall deficit of 20-80mm in most parts of the country.



Probability to Exceed 25mm

- Moderate to high over most of CAR, Cagayan Valley and Mindanao;
- Low to moderate over the rest of the country.



Probability to Exceed 50mm

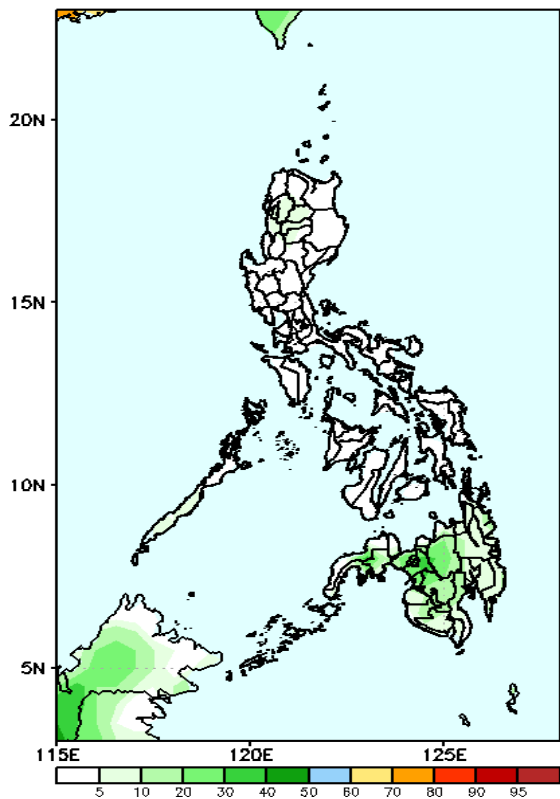
- Moderate to high over most of Bukidnon, Lanao provinces, and Zamboanga del Sur;
- Low to moderate over Northern Luzon and Mindanao
- Low over the rest of the country.

Exceedance Probability > 100/150/200 mm

Week 2: Apr 24-30, 2024

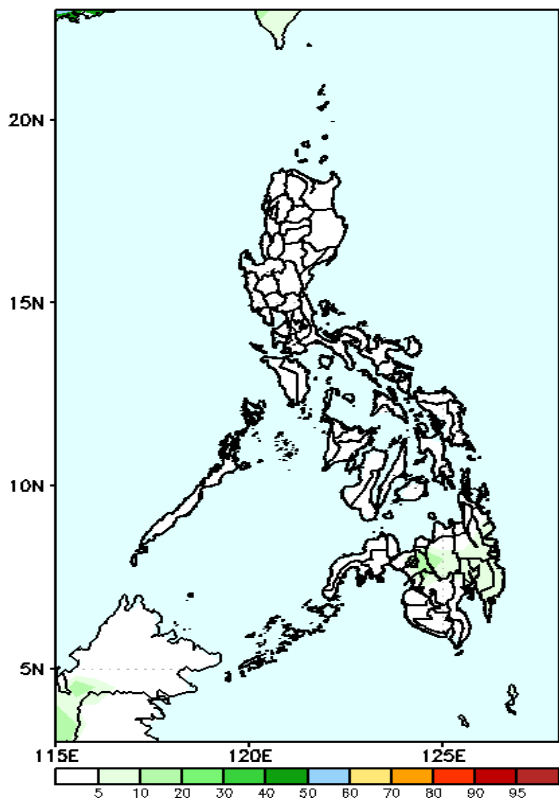
- Very high probability
- High Probability
- Moderate Probability
- Low Probability

GEFS Week-2 Exceedance Prob. > 100mm
Valid: 20240424 - 20240430



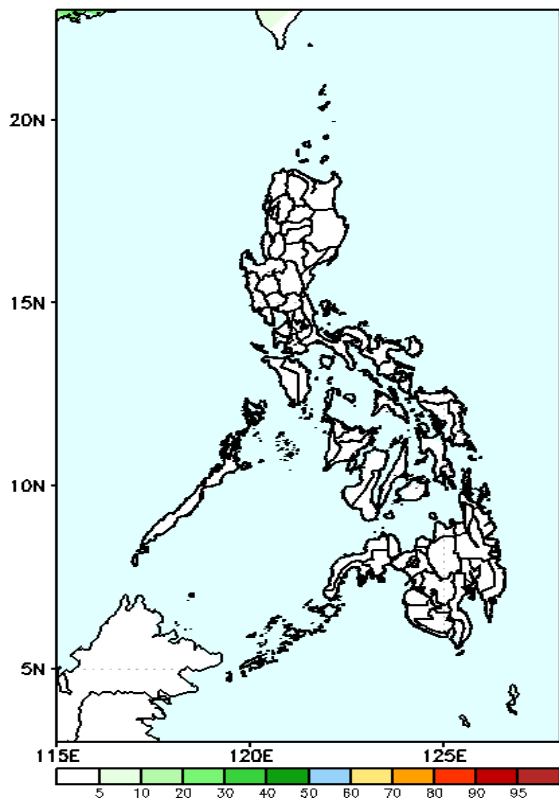
Probability to Exceed 100mm
• Low across the country.

GEFS Week-2 Exceedance Prob. > 150mm
Valid: 20240424 - 20240430



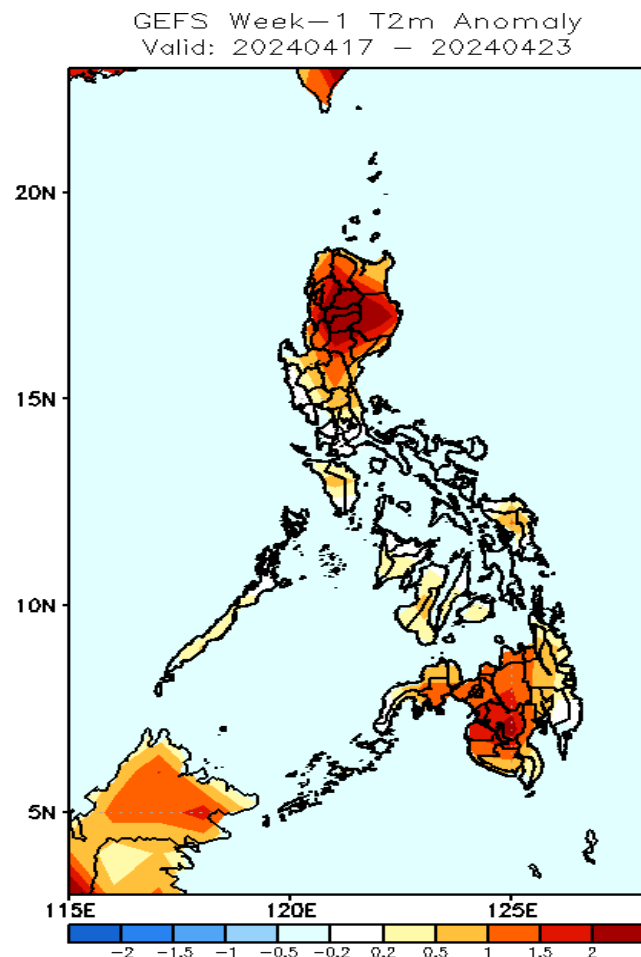
Probability to Exceed 150mm
• Low across the country.

GEFS Week-2 Exceedance Prob. > 200mm
Valid: 20240424 - 20240430



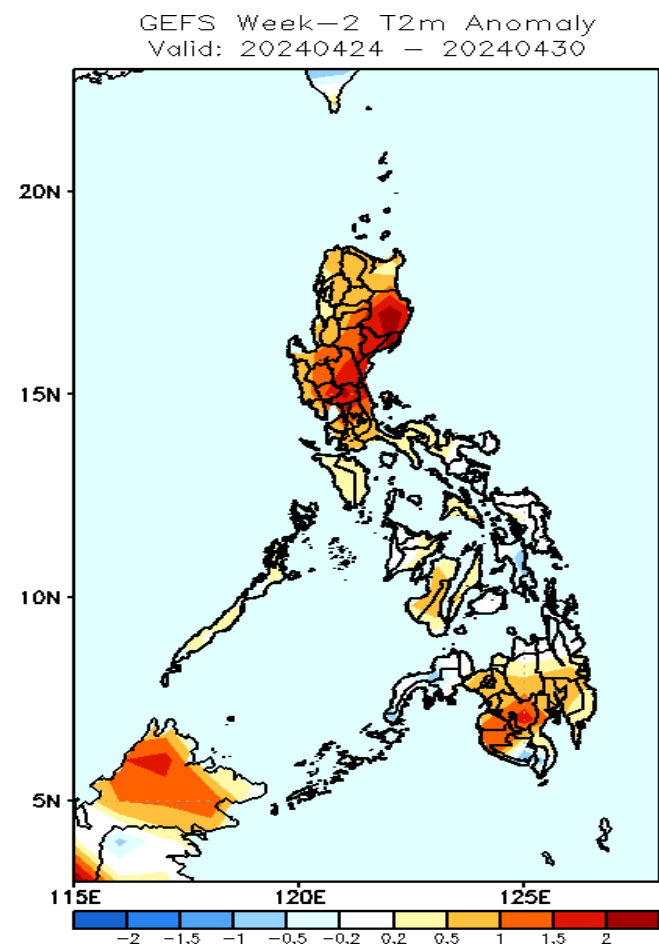
Probability to Exceed 200mm
• Low across the country.

GEFS Week-1 & 2 Forecasts: T2m Anomaly



2m Temperature Week 1: April 17-23, 2024

Near to warmer than average surface air temperature will likely be experienced in most parts of the country.



2m Temperature Week 2: Apr 24-30, 2024

Near to warmer than average surface air temperature will likely be experienced in most parts of the country.