



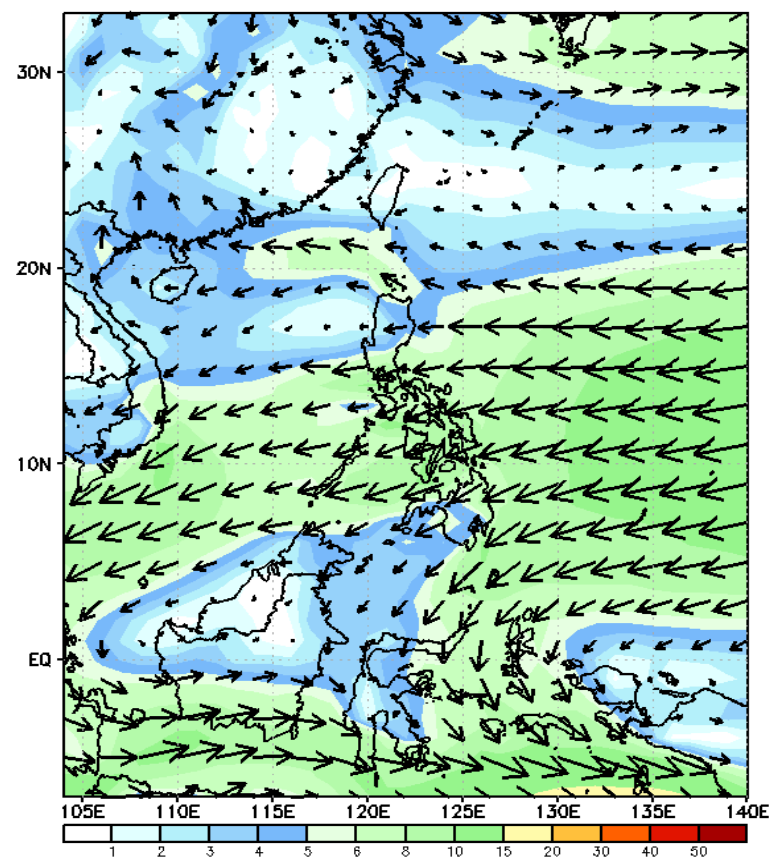
# Week 1 & Week 2 Forecast for the Philippines using GEFS Model



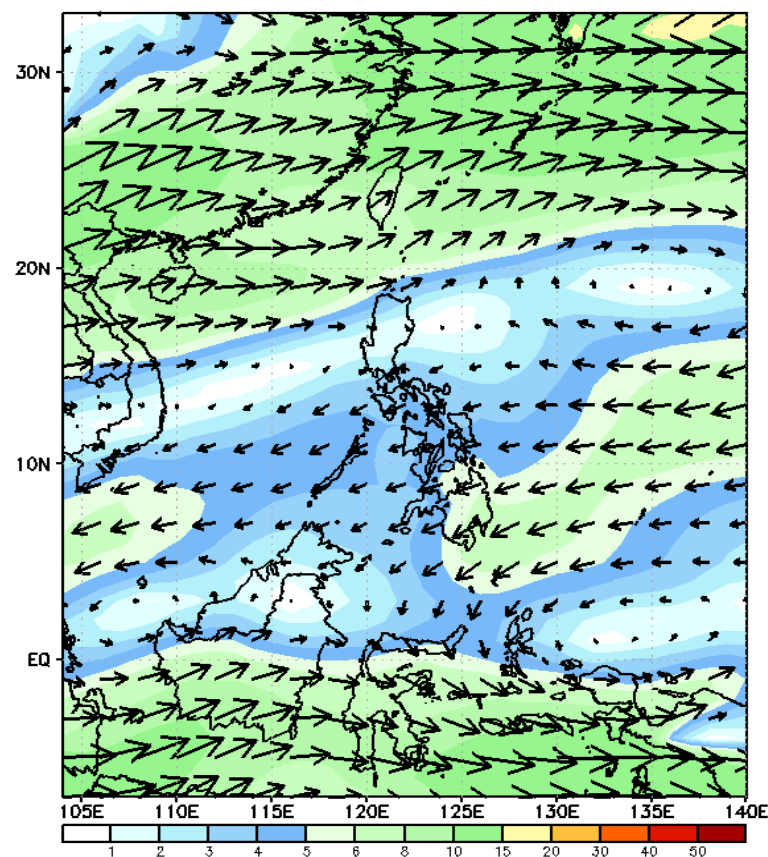
# GEFS Week-1 Forecasts: Wind Forecast

Week 1: January 17 -23, 2024

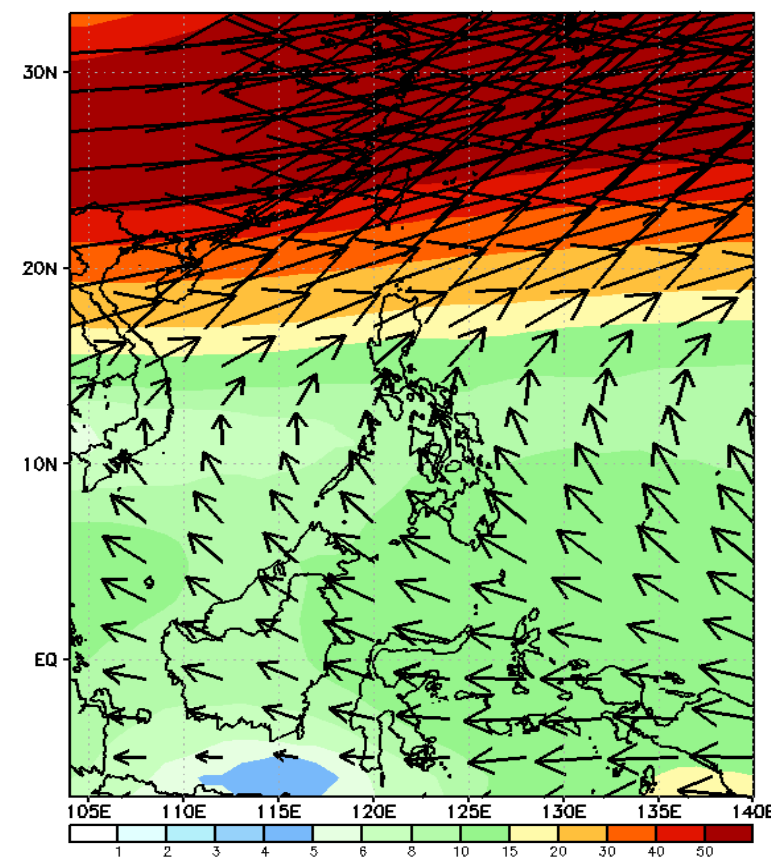
GEFS Week-1 850-hPa Wind Total  
Valid: 20240117 - 20240123



GEFS Week-1 700-hPa Wind Total  
Valid: 20240117 - 20240123

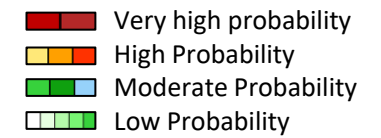


GEFS Week-1 200-hPa Wind Total  
Valid: 20240117 - 20240123



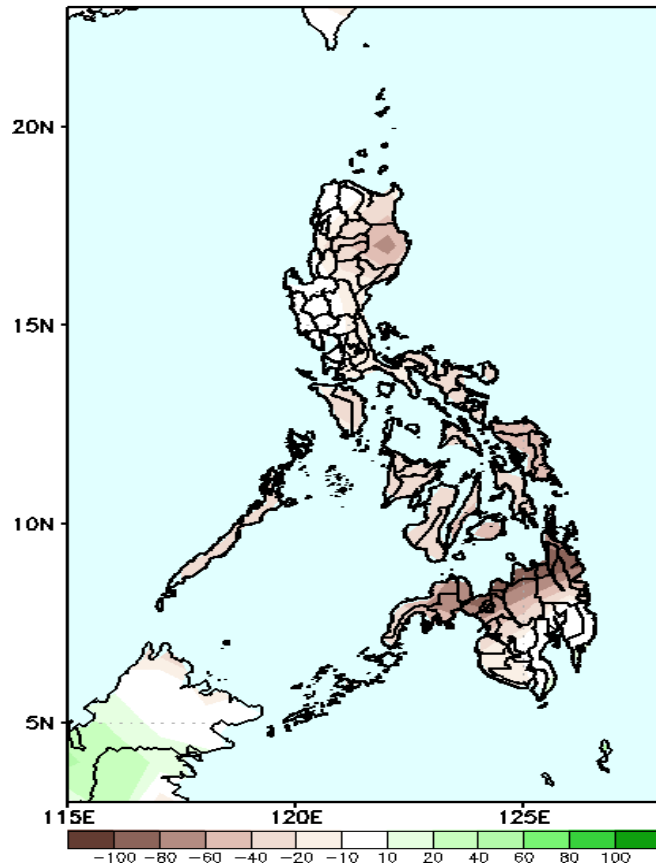
Northeast Monsoon will likely affect Extreme Northern Luzon, while easterlies affect the rest of the country.

# Precipitation Anomaly and Exceedance Probability > 25/50 mm



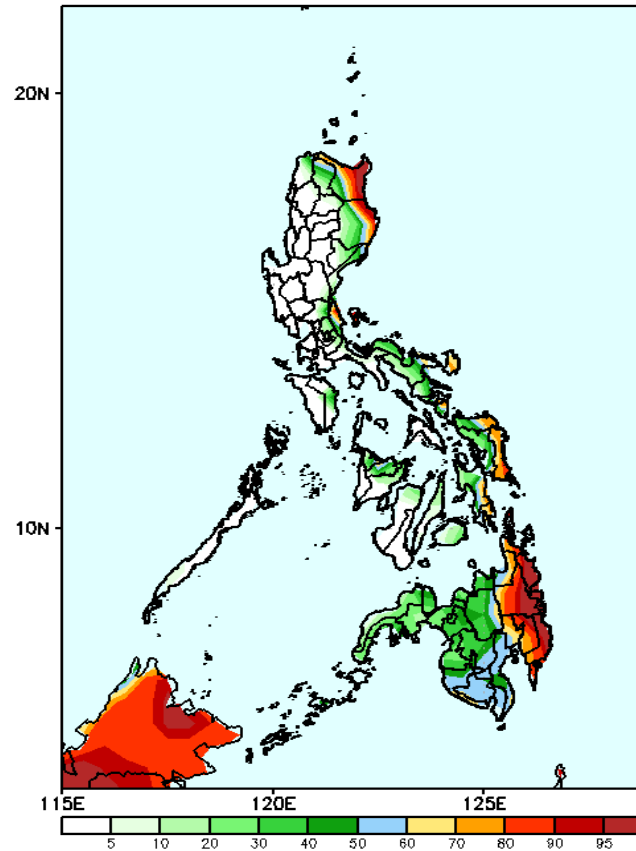
Week 1: January 17 -23, 2024

GEFS Week-1 Precip Anomaly  
Valid: 20240117 - 20240123



Rainfall deficit of 40-60mm in most parts of the country. Moreover, a deficit of 80-100mm is forecasted in Northern Mindanao.

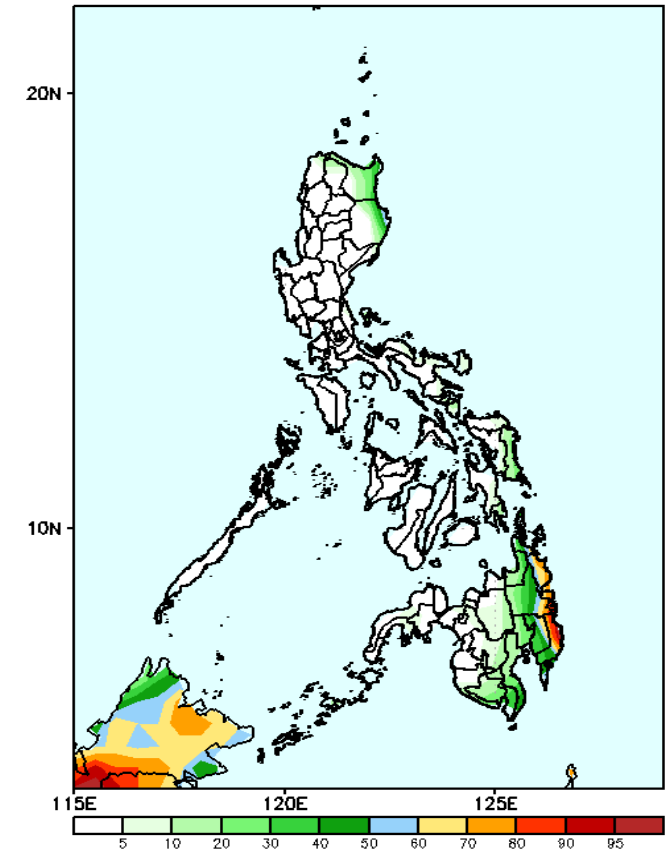
GEFS Week-1 Exceedance Prob. > 25mm  
Valid: 20240117 - 20240123



## Probability to Exceed 25mm

- High to very high over the eastern portions of Isabela, Cagayan, and eastern Mindanao;
- Moderate to high over the Bicol region, the rest of Cagayan and Isabela, Aurora, Quezon, Aklan, Capiz, Eastern Visayas, and the rest of Mindanao;
- Low to moderate over the rest of the country.

GEFS Week-1 Exceedance Prob. > 50mm  
Valid: 20240117 - 20240123



## Probability to Exceed 50mm

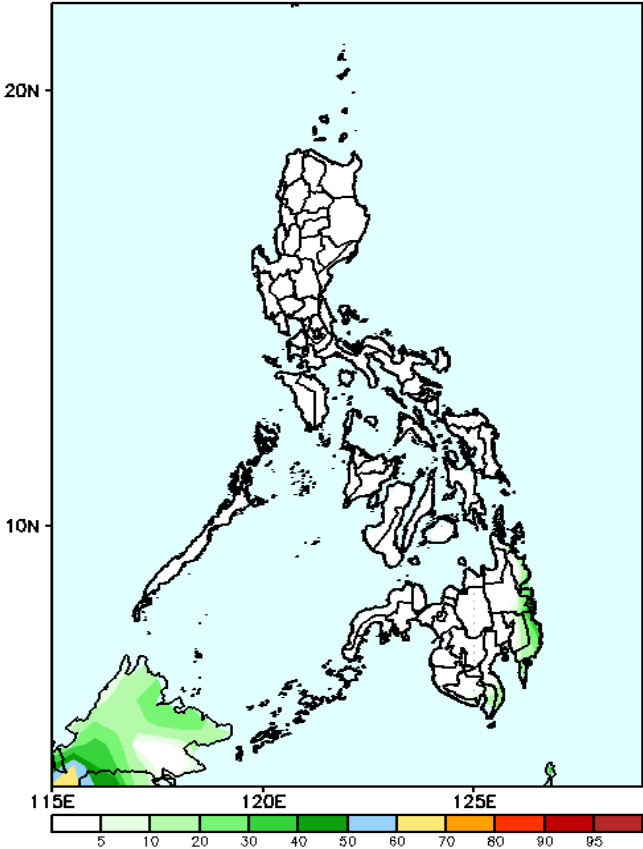
- Moderate to high over Eastern Mindanao;
- Low to moderate over the eastern portions of Cagayan and Isabela, and the rest of Mindanao;
- Low over the rest of the country.

# Exceedance Probability > 100/150/200 mm

Week 1: January 17 -23, 2024

- Very high probability
- High Probability
- Moderate Probability
- Low Probability

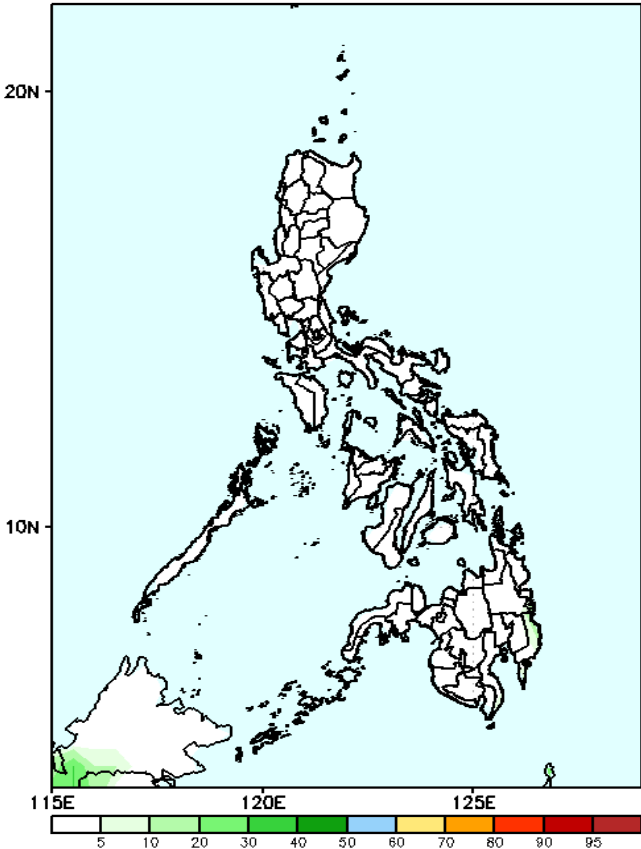
GEFS Week-1 Exceedance Prob. > 100mm  
Valid: 20240117 – 20240123



Probability to Exceed 100mm

- Low across the country.

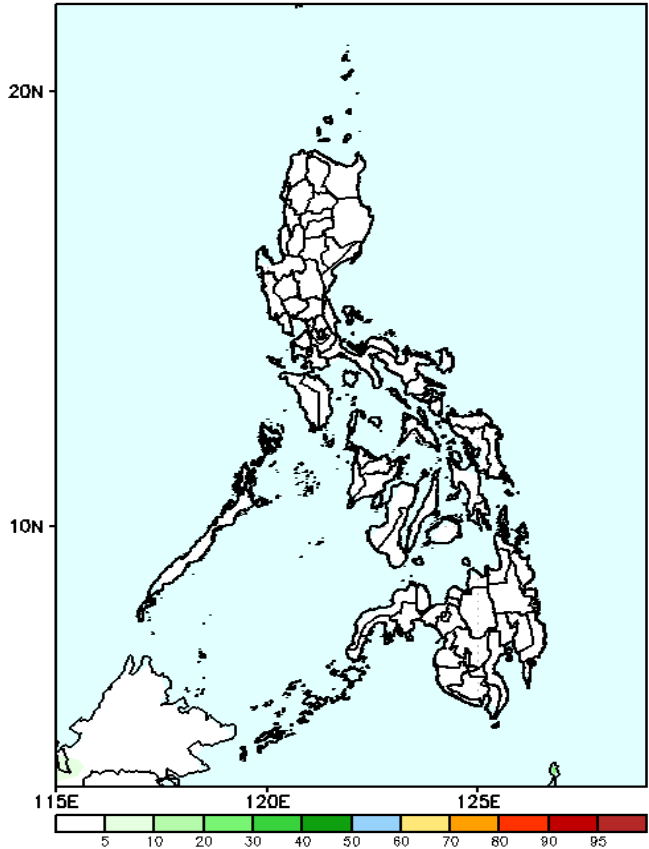
GEFS Week-1 Exceedance Prob. > 150mm  
Valid: 20240117 – 20240123



Probability to Exceed 150mm

- Low across the country.

GEFS Week-1 Exceedance Prob. > 200mm  
Valid: 20240117 – 20240123



Probability to Exceed 200mm

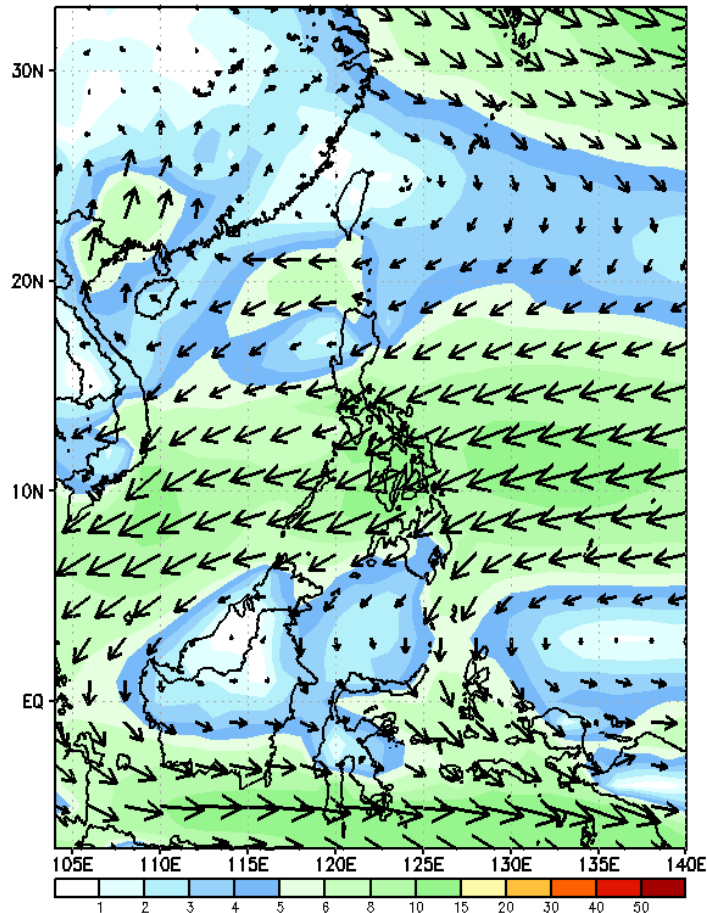
- Low across the country.



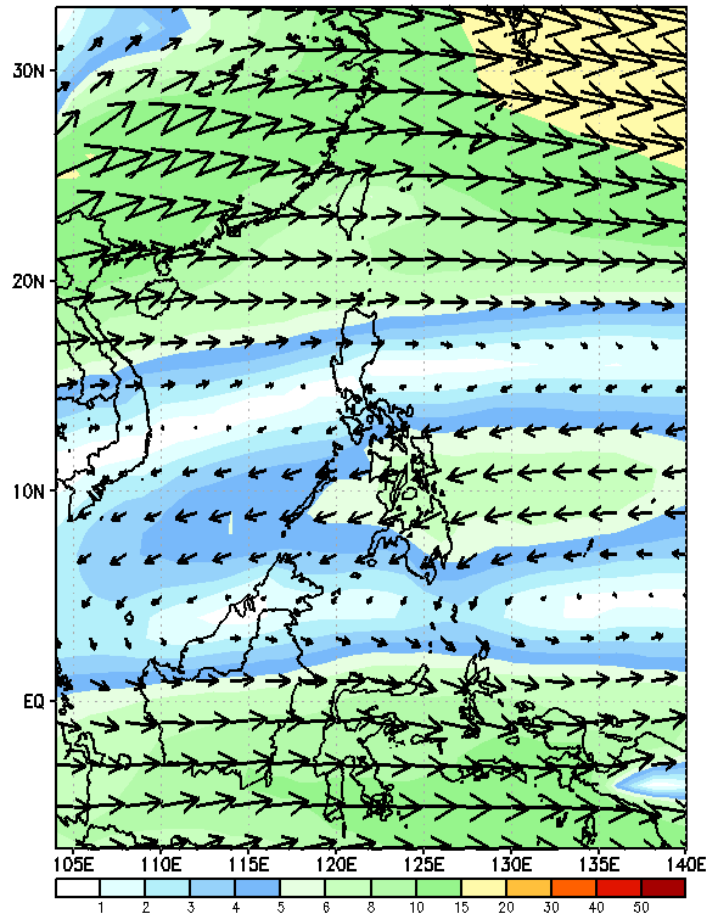
# GEFS Week-2 Forecasts: Wind Forecast

Week 2: January 24-30, 2024

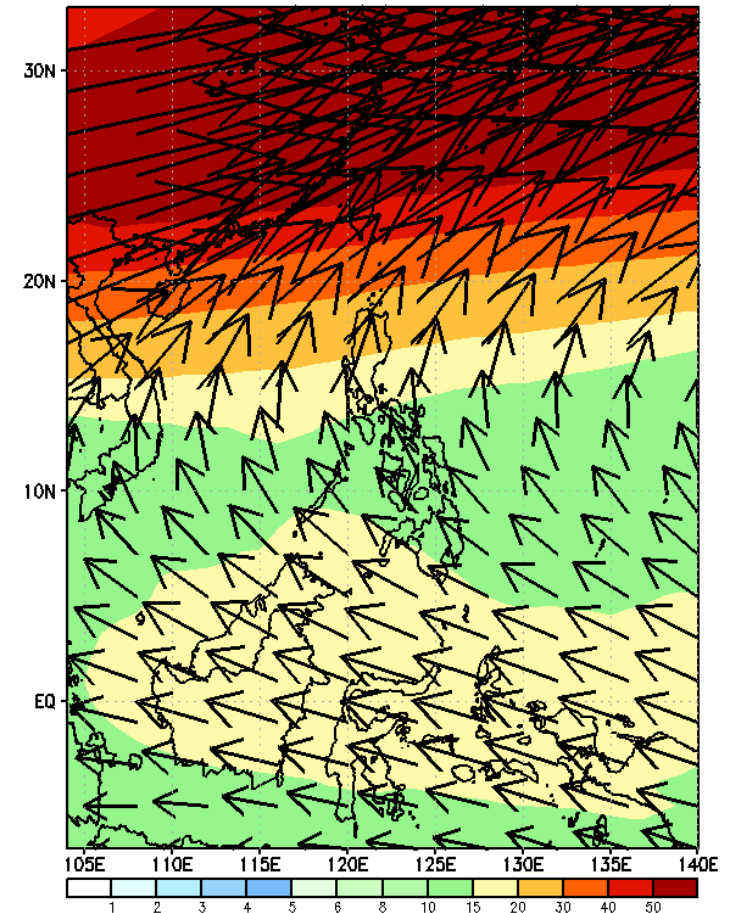
GEFS Week-2 850-hPa Wind Total  
Valid: 20240124 - 20240130



GEFS Week-2 700-hPa Wind Total  
Valid: 20240124 - 20240130

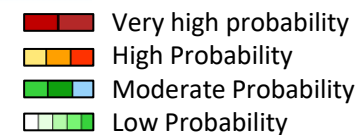


GEFS Week-2 200-hPa Wind Total  
Valid: 20240124 - 20240130



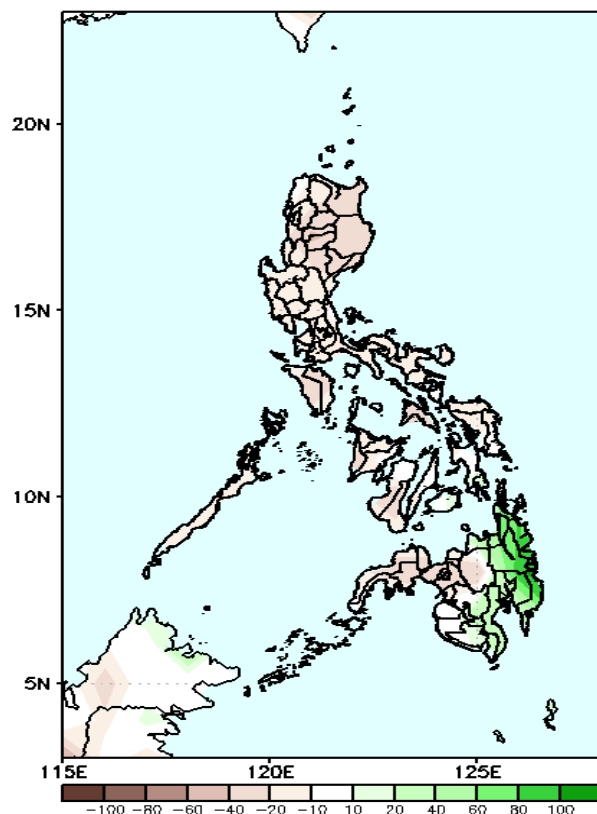
Northeast Monsoon affecting eastern sections of Luzon and Visayas; Easterlies affecting Mindanao.

# Precipitation Anomaly and Exceedance Probability > 25/50 mm



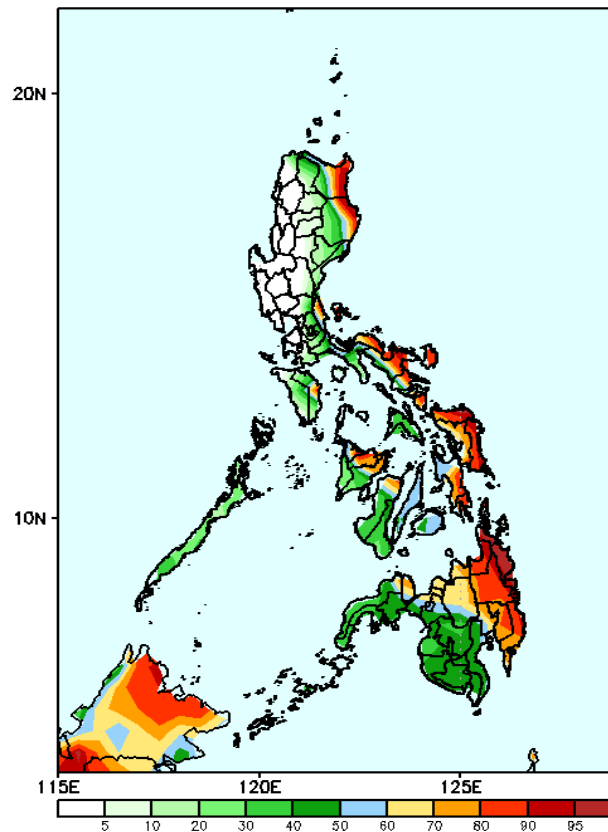
## Week 2: January 24-30, 2024

GEFS Week-2 Precip Anomaly  
Valid: 20240124 - 20240130



Rainfall deficit of 20-40mm in most parts of the country except in Caraga and Davao Region where an increase of 60-80mm of rainfall is most likely.

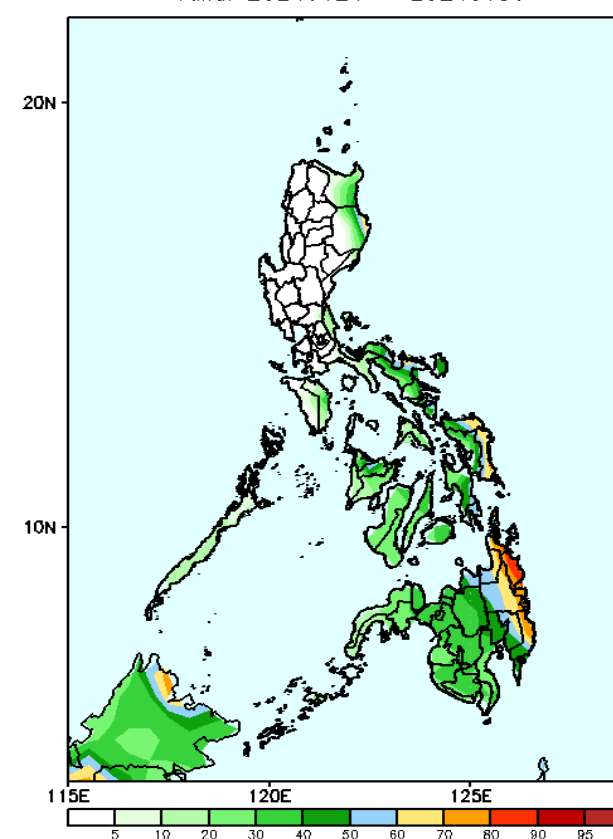
GEFS Week-2 Exceedance Prob. > 25mm  
Valid: 20240124 - 20240130



### Probability to Exceed 25mm

- High to very high over the eastern portions of Cagayan, Isabela, and Bicol Region, Samar provinces, and eastern Mindanao;
- Moderate to high over the rest of Cagayan, Isabela, and Bicol Region, Quezon, Oriental Mindoro, and the rest of Visayas and Mindanao;
- Low to moderate over the rest of the country.

GEFS Week-2 Exceedance Prob. > 50mm  
Valid: 20240124 - 20240130



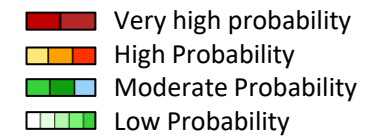
### Probability to Exceed 50mm

- Moderate to high over eastern Isabela, Bicol Region, Samar provinces, and eastern Mindanao;
- Low to moderate over the rest of Visayas and Mindanao;
- Low over the rest of Luzon.

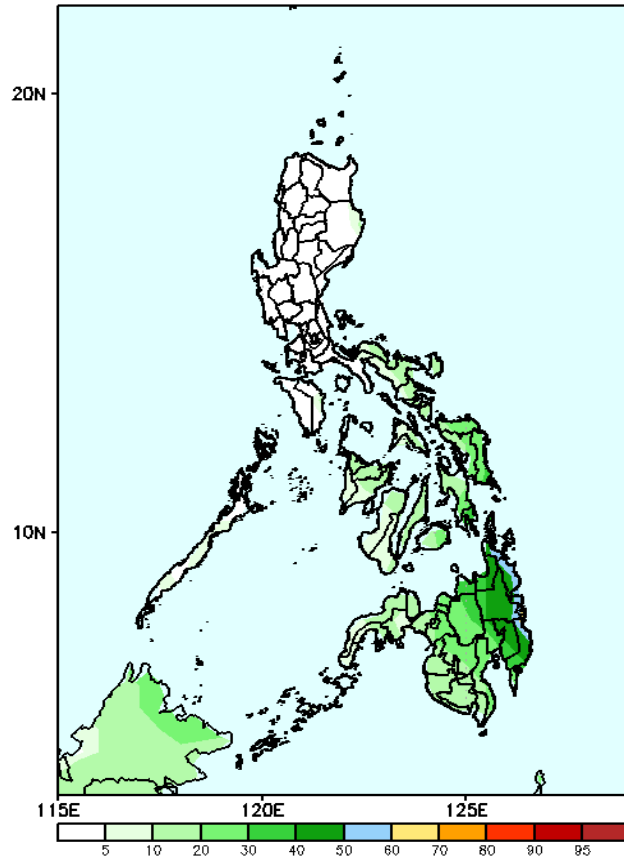


# Exceedance Probability > 100/150/200 mm

Week 2: January 24-30, 2024



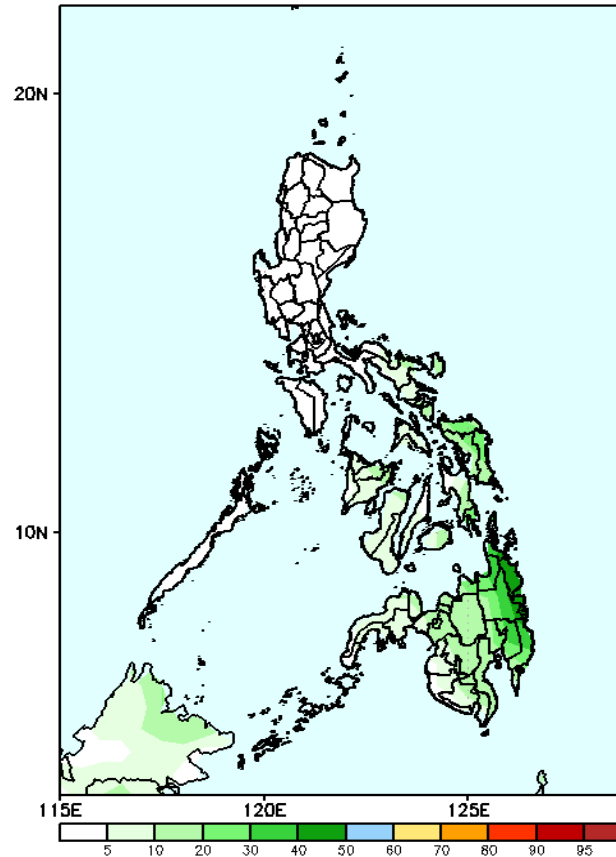
GEFS Week-2 Exceedance Prob. > 100mm  
Valid: 20240124 - 20240130



## Probability to Exceed 100mm

- Low to moderate over eastern Mindanao
- Low over the rest of the country.

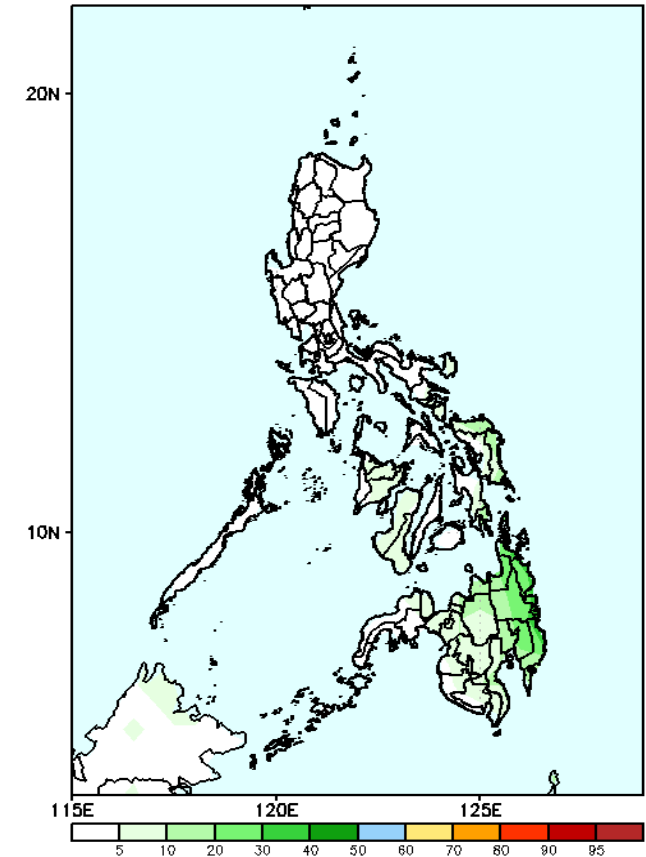
GEFS Week-2 Exceedance Prob. > 150mm  
Valid: 20240124 - 20240130



## Probability to Exceed 150mm

- Low across the country.

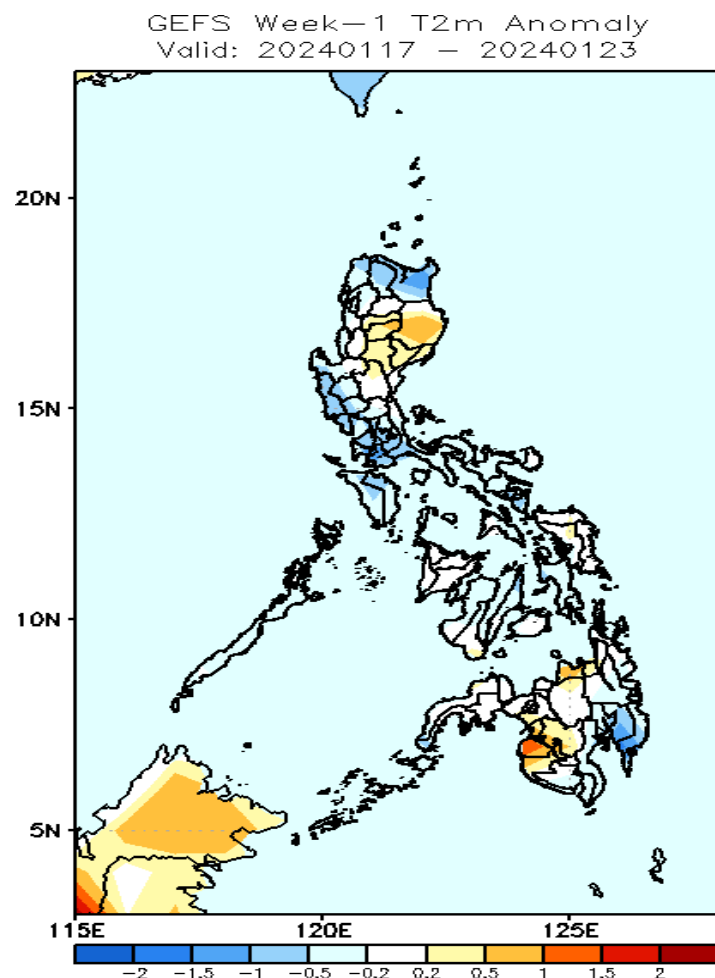
GEFS Week-2 Exceedance Prob. > 200mm  
Valid: 20240124 - 20240130



## Probability to Exceed 200mm

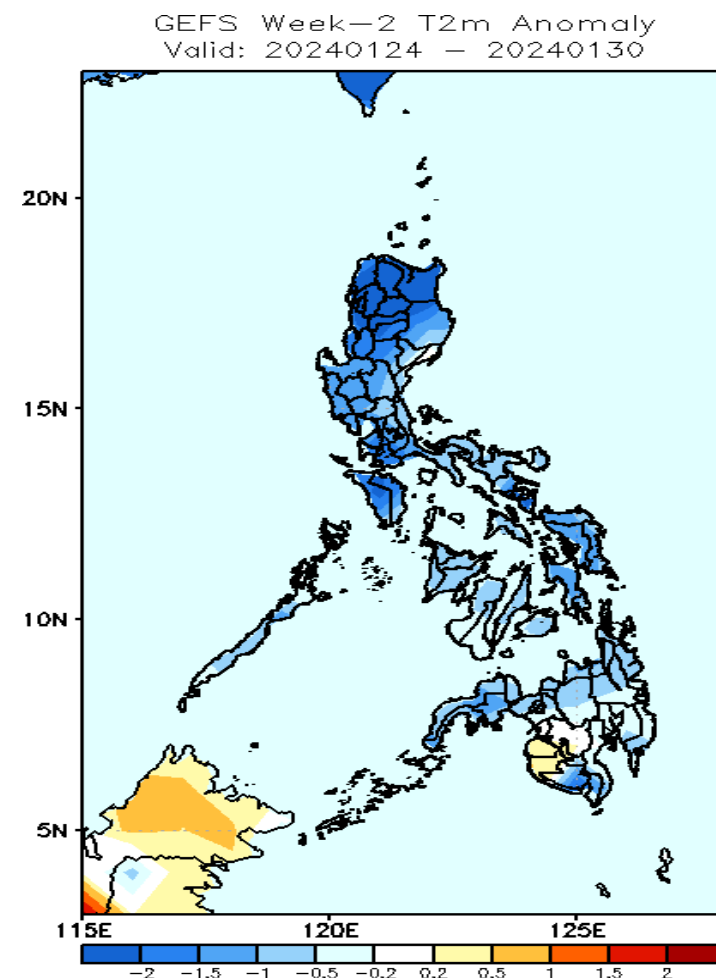
- Low across the country.

# GEFS Week-1 & 2 Forecasts: T2m Anomaly



## 2m Temperature Week 1: January 17-23, 2024

Near to slightly cooler than average surface air temperature average will likely be experienced in most parts country except in Isabela, Ifugao, Nueva Vizcaya, Misamis Oriental, Maguindanao, Sultan Kudarat, and South Cotabato where slightly warmer to warmer than average temperature is expected.



## 2m Temperature Week 2: January 24-30, 2024

Slightly cooler to cooler than average surface air temperature average will likely be experienced in most parts of the country except in Maguindanao and Sultan Kudarat where slightly warmer than average temperature is expected.