



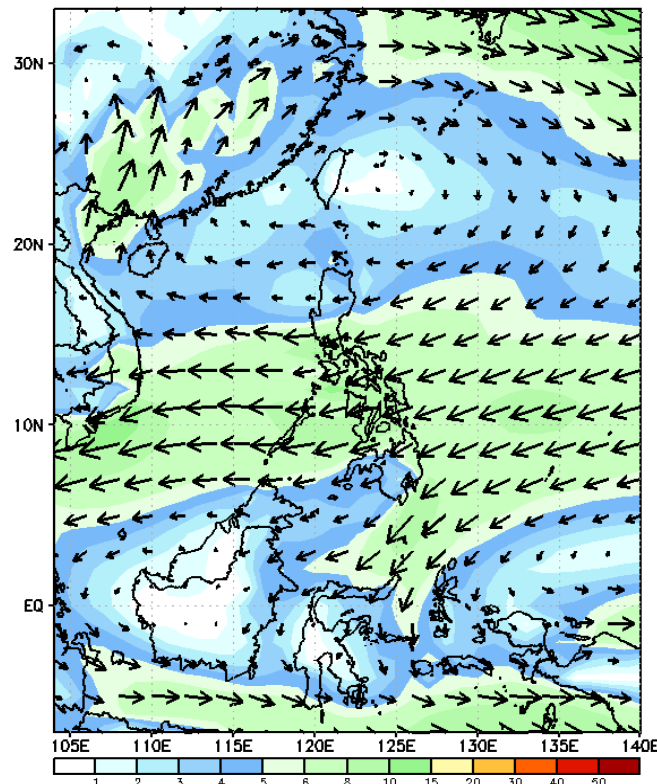
Week 1 & Week 2 Forecast for the Philippines using GEFS Model



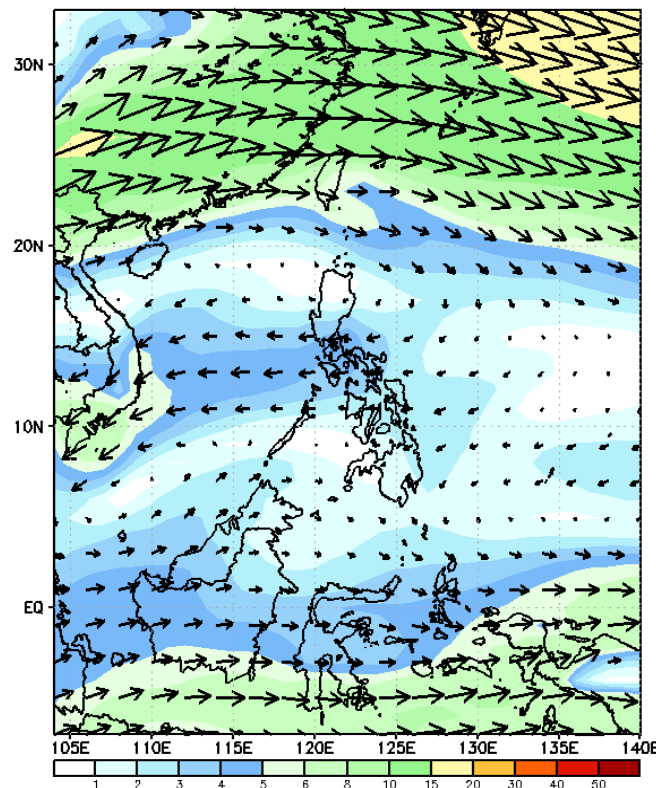
GEFS Week-1 Forecasts: Wind Forecast

Week 1: Mar 18-24, 2024

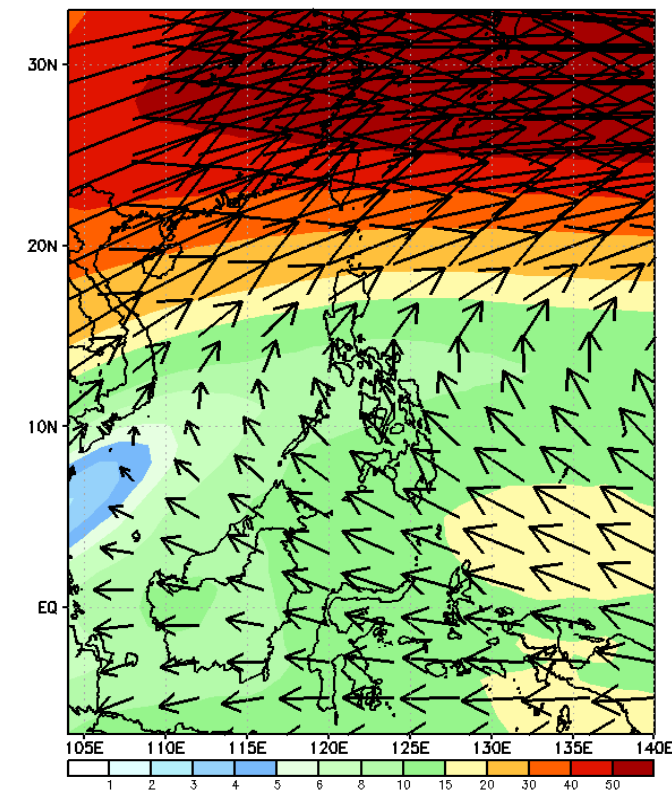
GEFS Week-1 850-hPa Wind Total
Valid: 20240318 - 20240324



GEFS Week-1 700-hPa Wind Total
Valid: 20240318 - 20240324

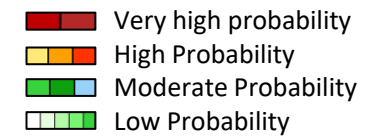


GEFS Week-1 200-hPa Wind Total
Valid: 20240318 - 20240324



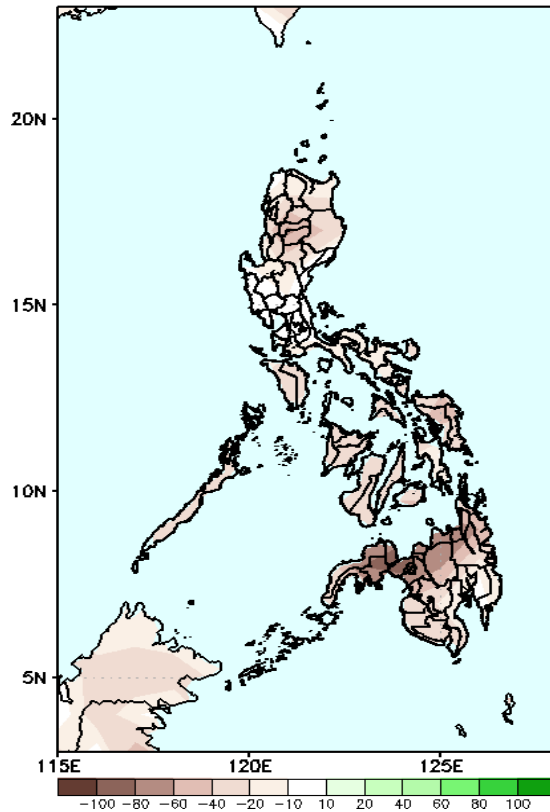
Surges of Northeast Monsoon will still affect Northern Luzon while Easterlies will likely affect the rest of the country.

Precipitation Anomaly and Exceedance Probability > 25/50 mm



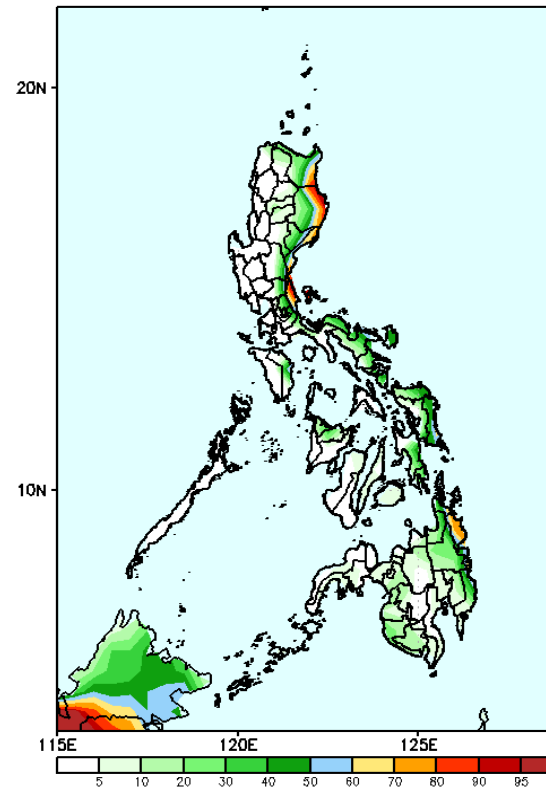
Week 1: Mar 18-24, 2024

GEFS Week-1 Precip Anomaly
Valid: 20240318 - 20240324



Rainfall deficit of 20-80mm over most parts of the country.

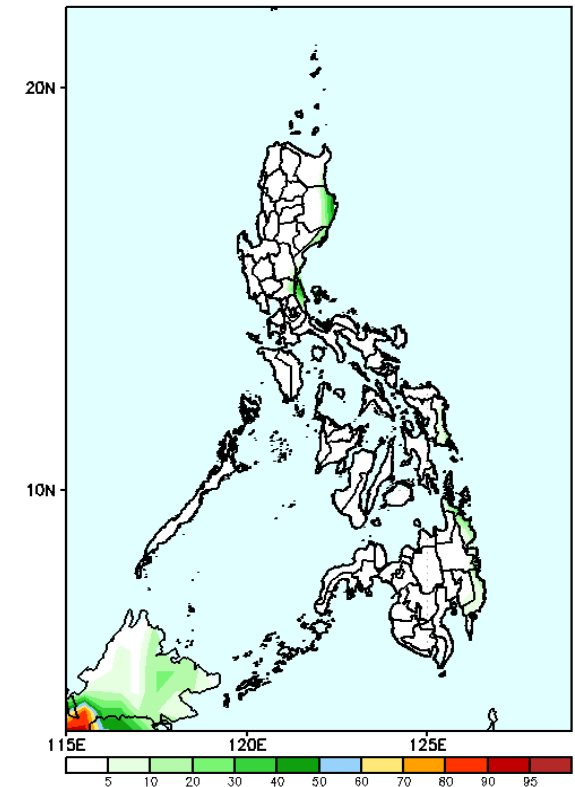
GEFS Week-1 Exceedance Prob. > 25mm
Valid: 20240318 - 20240324



Probability to Exceed 25mm

- Moderate to high over the eastern portions of Cagayan Valley and Bicol Region, Aurora, northern Quezon, Eastern Samar, and Surigao provinces;
- Low to moderate over the rest of the eastern sections of the country;
- Low over the rest of the country.

GEFS Week-1 Exceedance Prob. > 50mm
Valid: 20240318 - 20240324



Probability to Exceed 50mm

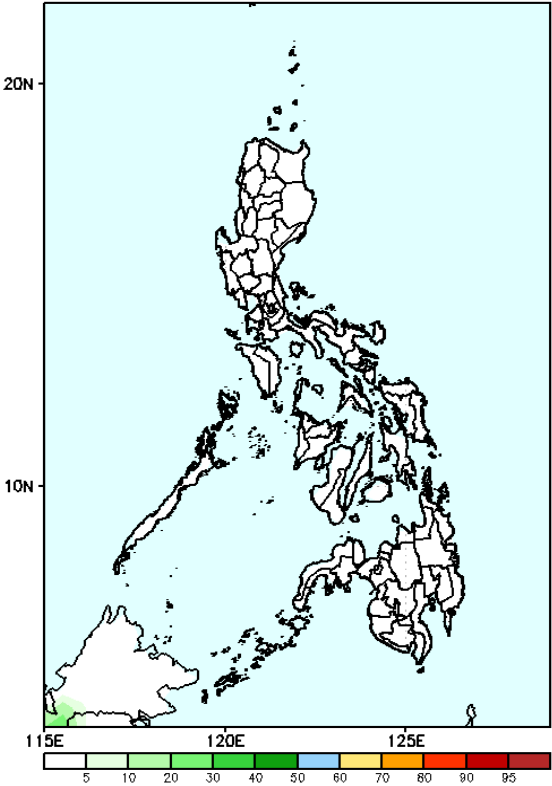
- Low across the country.

Exceedance Probability > 100/150/200 mm

Week 1: Mar 18-24, 2024

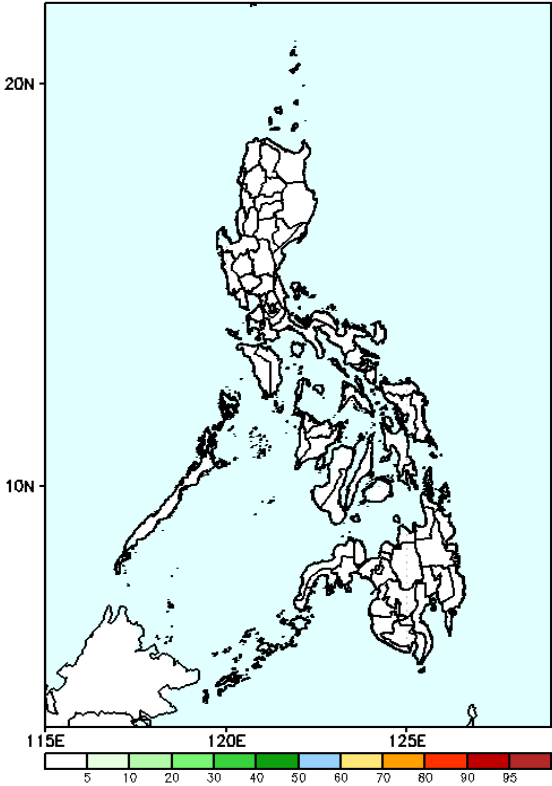
- Very high probability
- High Probability
- Moderate Probability
- Low Probability

GEFS Week-1 Exceedance Prob. > 100mm
Valid: 20240318 – 20240324



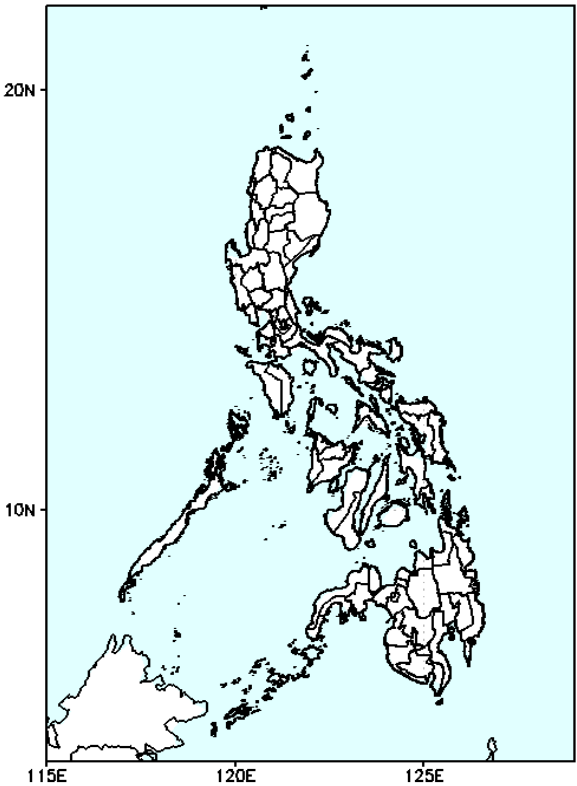
Probability to Exceed 100mm
• Low across the country.

GEFS Week-1 Exceedance Prob. > 150mm
Valid: 20240318 – 20240324



Probability to Exceed 150mm
• Low across the country.

GEFS Week-1 Exceedance Prob. > 200mm
Valid: 20240318 – 20240324

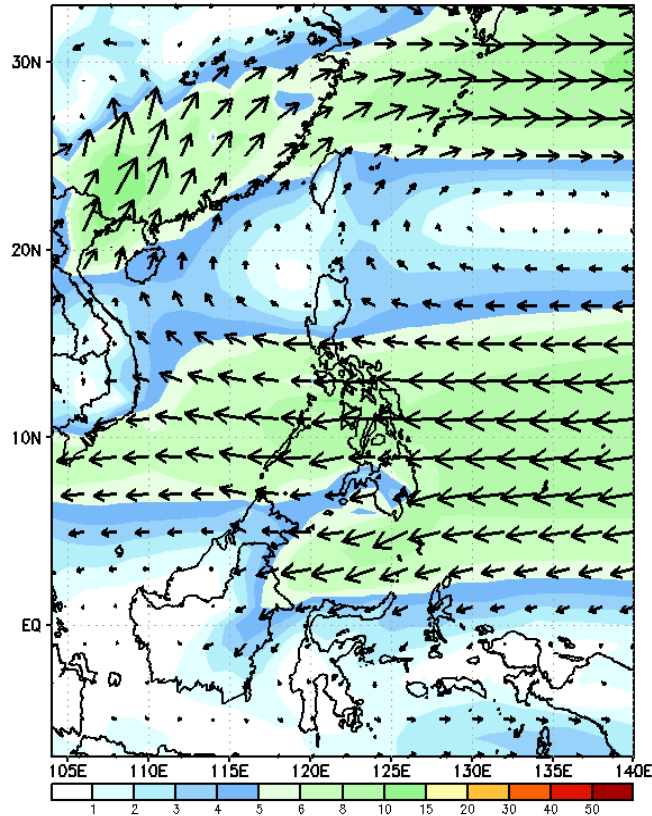


Probability to Exceed 200mm
• Low across the country.

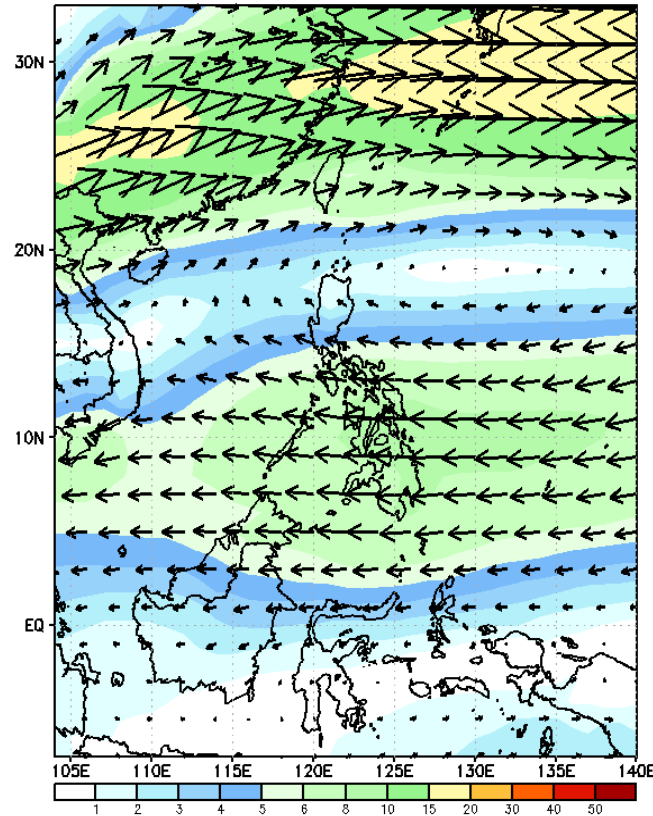
GEFS Week-2 Forecasts: Wind Forecast

Week 2: Mar 25-31, 2024

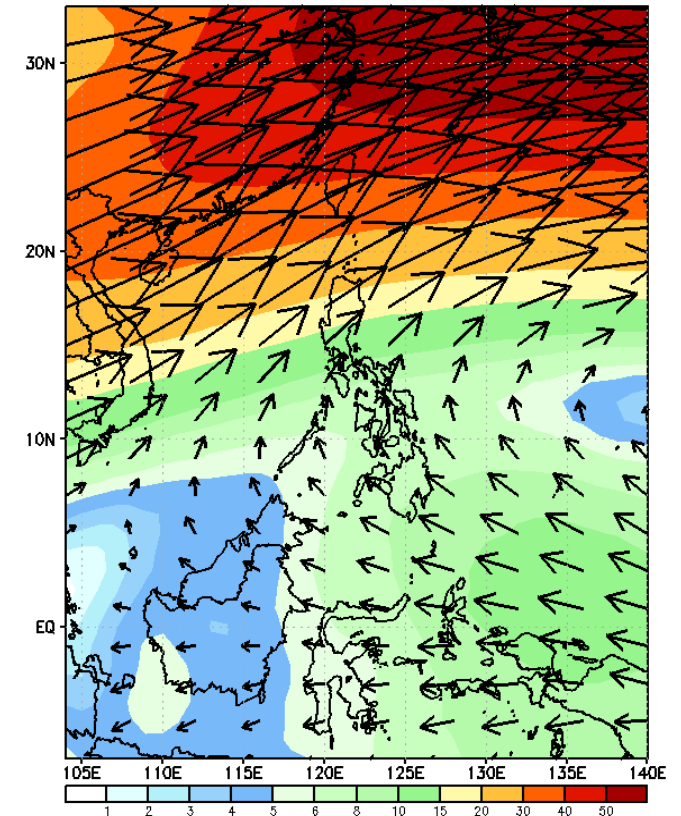
GEFS Week-2 850-hPa Wind Total
Valid: 20240325 - 20240331



GEFS Week-2 700-hPa Wind Total
Valid: 20240325 - 20240331

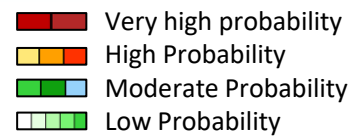


GEFS Week-2 200-hPa Wind Total
Valid: 20240325 - 20240331

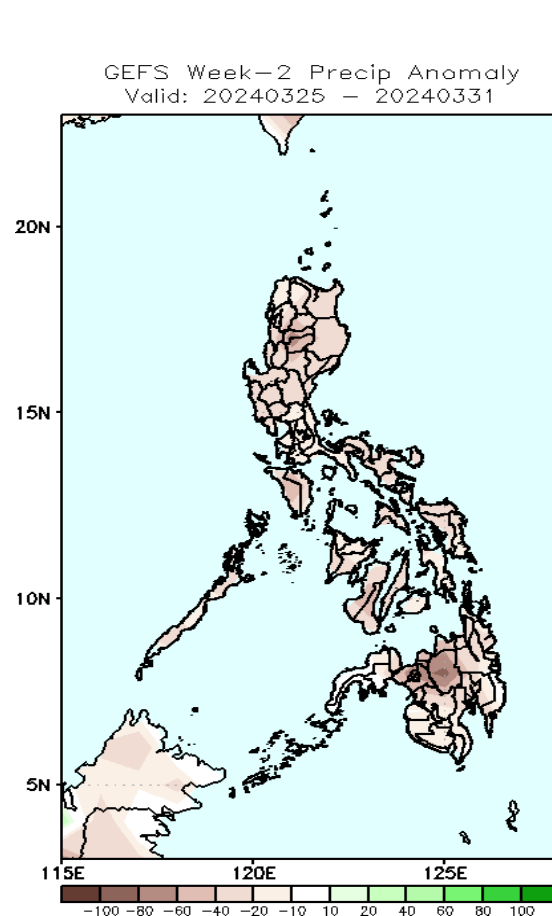


Easterlies will likely affect most parts of the country.

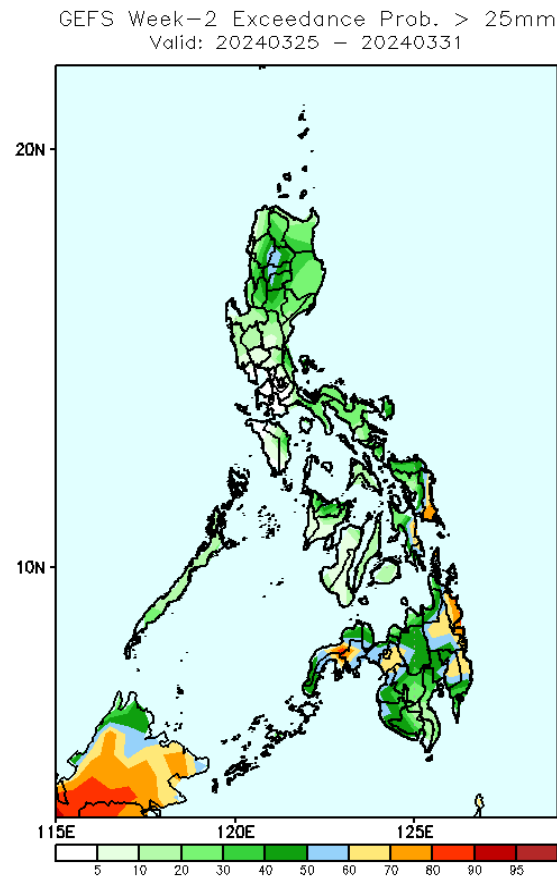
Precipitation Anomaly and Exceedance Probability > 25/50 mm



Week 2: Mar 25-31, 2024

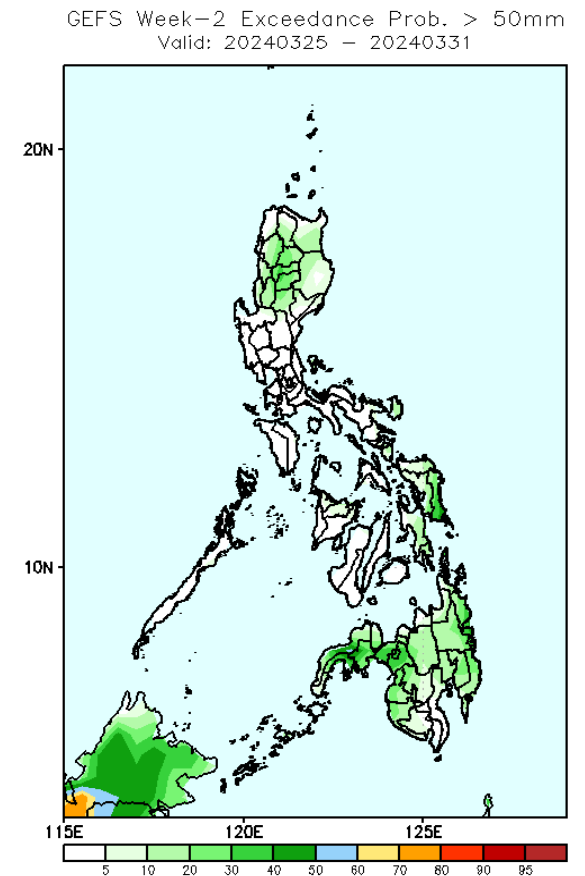


Rainfall deficit of 20-80mm over most parts of the country.



Probability to Exceed 25mm

- Moderate to high over Eastern Visayas and most parts of Mindanao;
- Low to moderate over Northern Luzon, Bicol region and the rest of Visayas;
- Low over the rest of Luzon.



Probability to Exceed 50mm

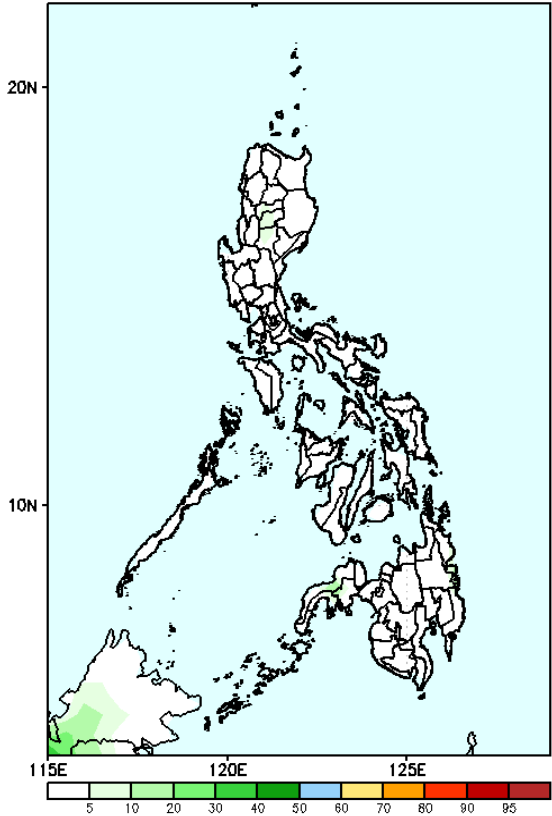
- Low across the country.

Exceedance Probability > 100/150/200 mm

Week 2: Mar 25-31, 2024

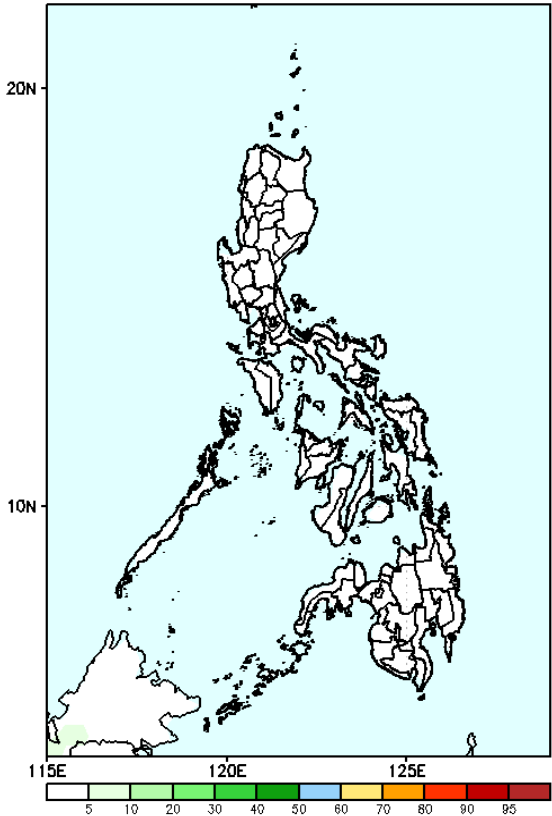
- Very high probability
- High Probability
- Moderate Probability
- Low Probability

GEFS Week-2 Exceedance Prob. > 100mm
Valid: 20240325 - 20240331



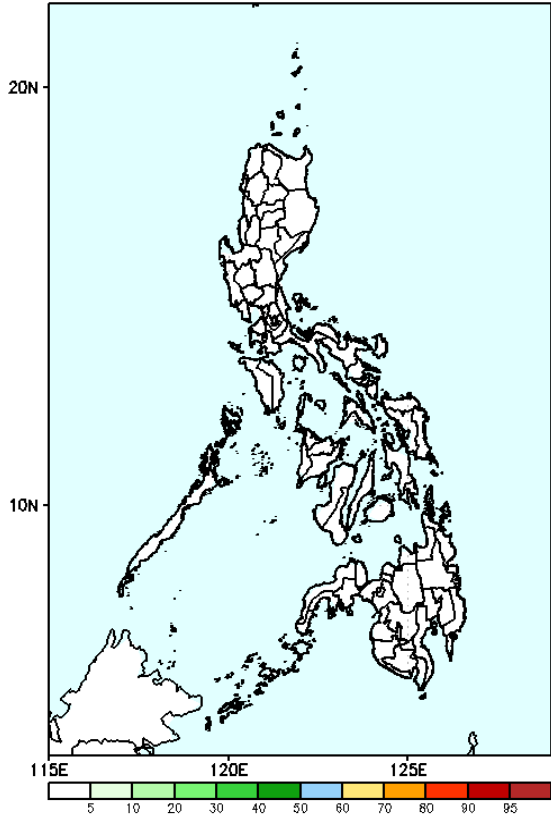
Probability to Exceed 100mm
• Low across the country.

GEFS Week-2 Exceedance Prob. > 150mm
Valid: 20240325 - 20240331



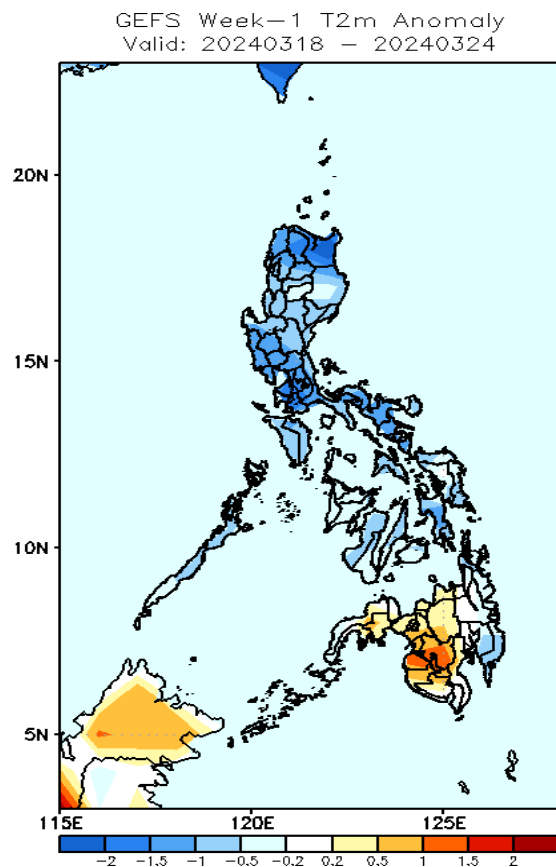
Probability to Exceed 150mm
• Low across the country.

GEFS Week-2 Exceedance Prob. > 200mm
Valid: 20240325 - 20240331



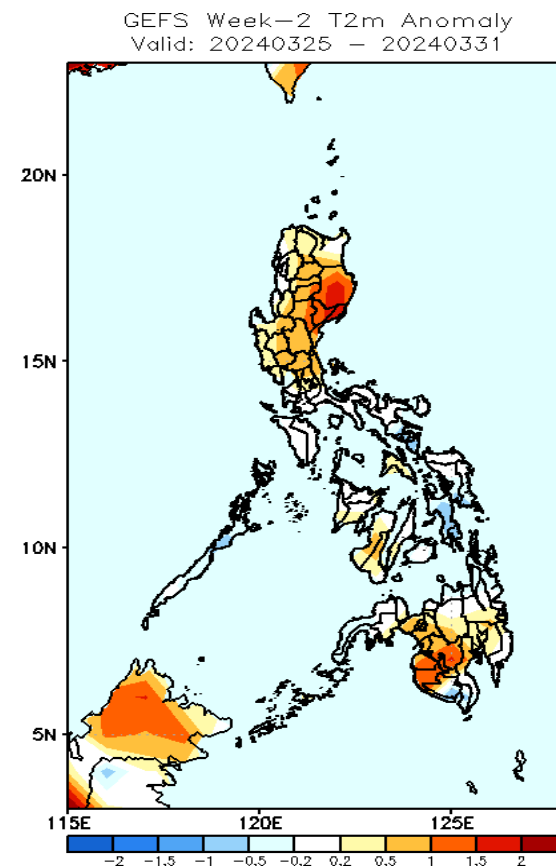
Probability to Exceed 200mm
• Low across the country.

GEFS Week-1 & 2 Forecasts: T2m Anomaly



2m Temperature Week 1: Mar 18-24, 2024

Average to cooler than average surface air temperature will likely be experienced in most parts of Luzon, Visayas and Eastern Mindanao while slightly warmer to warmer than average surface air temperature is expected over the rest of Mindanao.



2m Temperature Week 2: Mar 25-31, 2024

Near to warmer than average surface air temperature will likely be experienced in most parts of the country except Palawan, Eastern Visayas and some portions of South Cotabato and Zamboanga peninsula where slightly cooler than average surface air temperature is expected.