



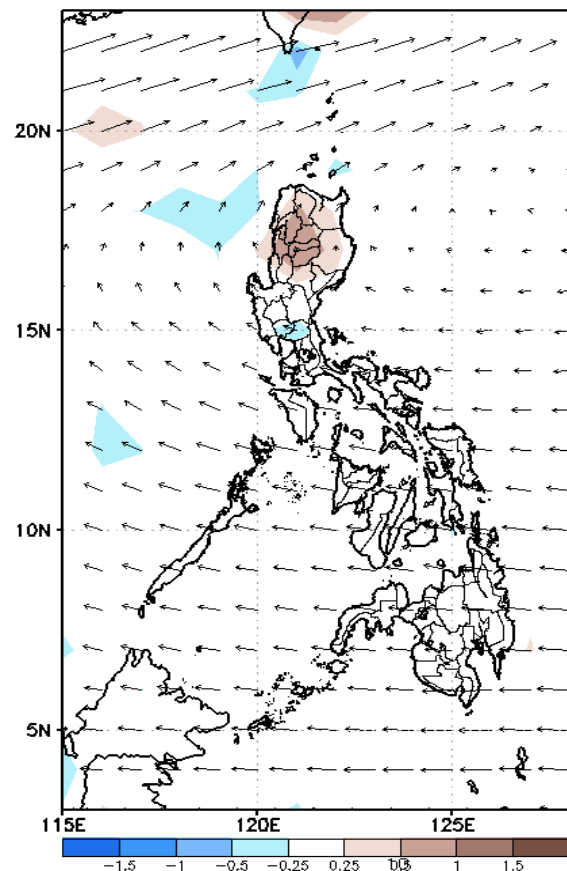
# Week 1 & Week 2 Forecast for the Philippines using GEFS Model



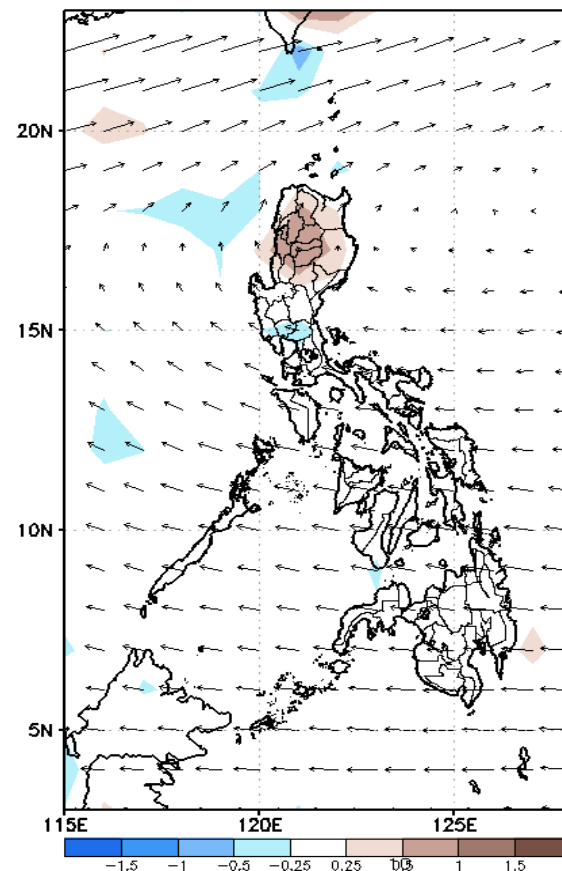
# GEFS Week-1 Wind Forecasts:

Week 1: April 19 - 25, 2024

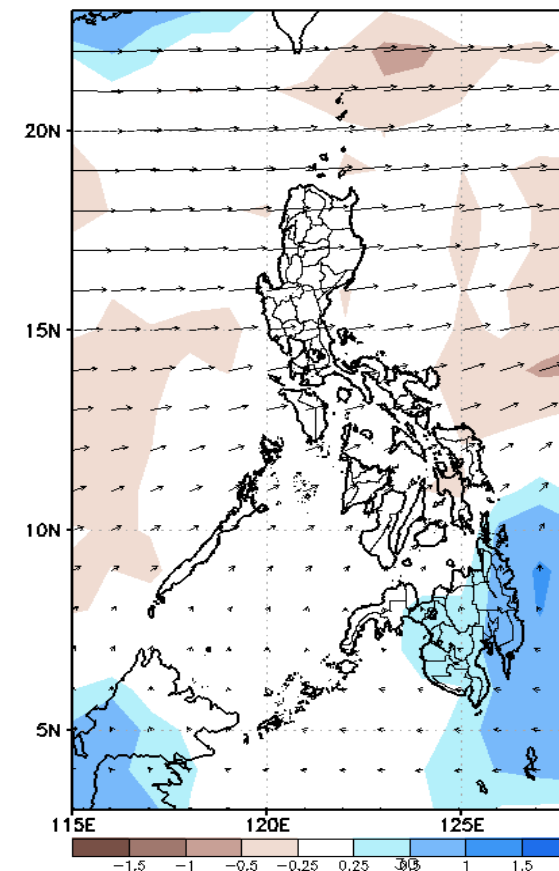
GEFS Week-1 850-hPa Divergence and Wind Anomaly  
Valid: 20240419 - 20240425



GEFS Week-1 700-hPa Divergence and Wind Anomaly  
Valid: 20240419 - 20240425

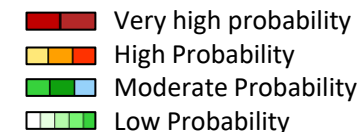


GEFS Week-1 200-hPa Divergence and Wind Anomaly  
Valid: 20240419 - 20240425



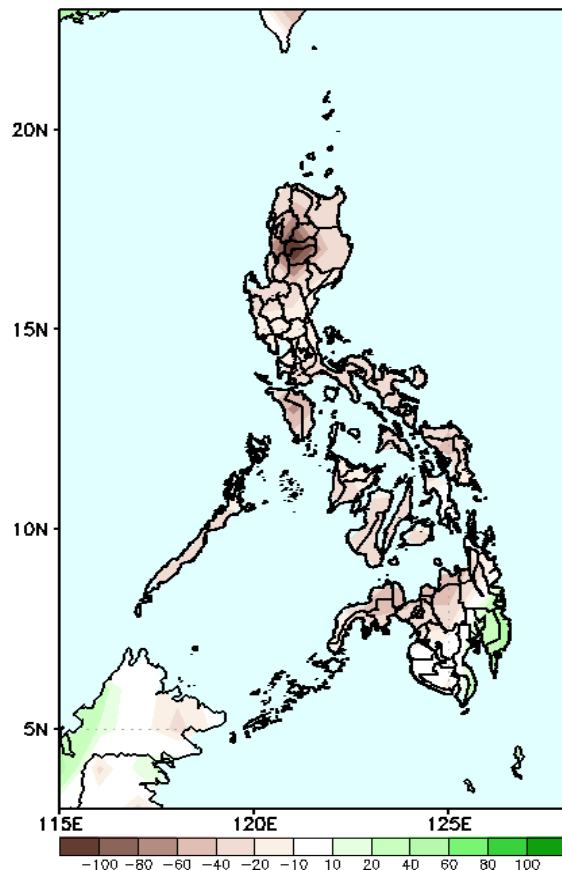
Easterlies continuously affect most parts of the country. Expect dry and warm days during the forecast period.

# Precipitation Anomaly and Exceedance Probability > 25/50 mm



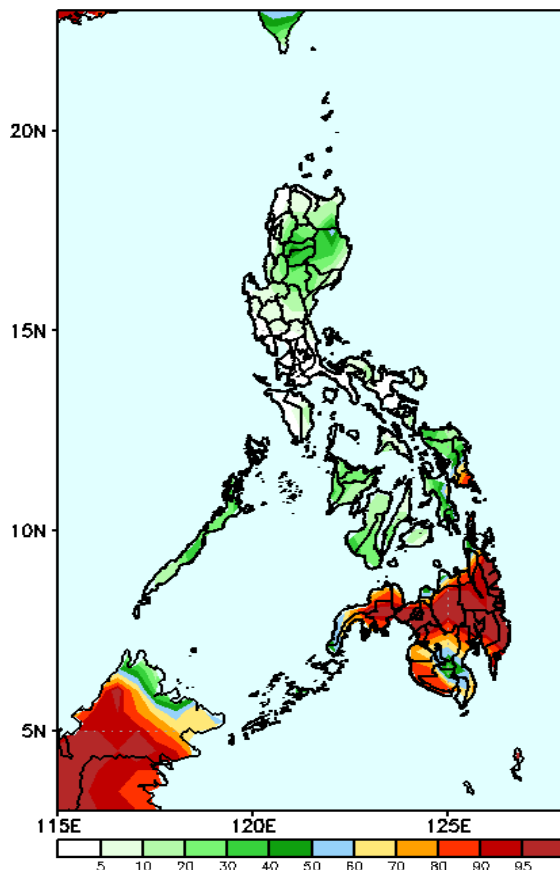
Week 1: April 19 - 25, 2024

GEFS Week-1 Precip Anomaly  
Valid: 20240419 - 20240425



Rainfall deficit of 40-80mm in CAR; 20-60mm in most parts of the country while an increase of 20-40mm of rainfall will be likely over most of Davao region.

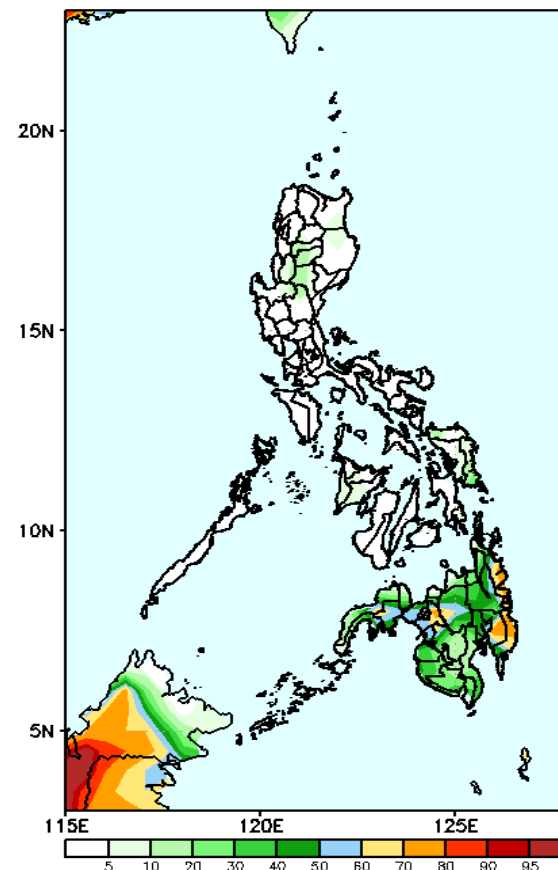
GEFS Week-1 Exceedance Prob. > 25mm  
Valid: 20240419 - 20240425



## Probability to Exceed 25mm

- High to very high over most of Mindanao;
- Moderate to high over Eastern Samar, the northernmost portions of Northern Mindanao and Caraga, and the Southwest portion of Mindanao;
- Low over Luzon and the rest of Visayas.

GEFS Week-1 Exceedance Prob. > 50mm  
Valid: 20240419 - 20240425



## Probability to Exceed 50mm

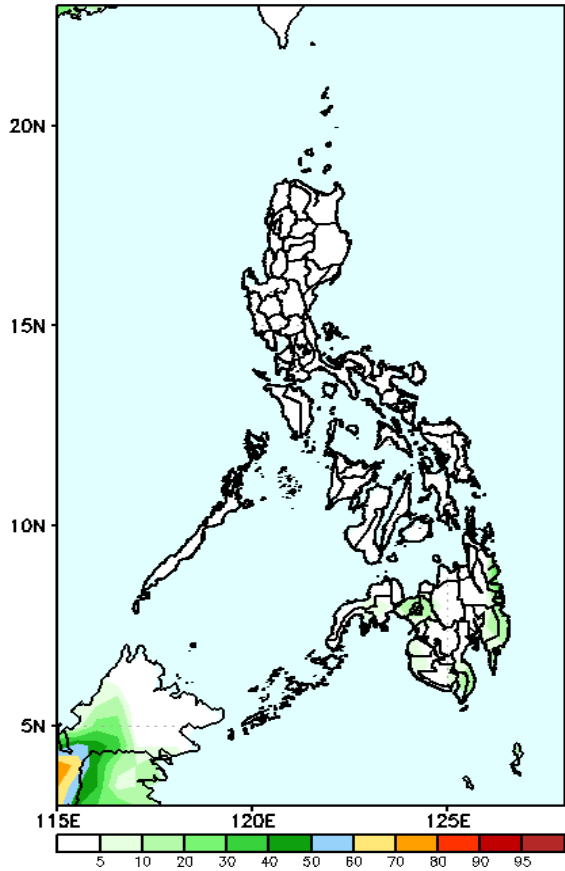
- Moderate to High over Eastern Mindanao, Bukidnon, Lanao provinces, and Zamboanga del Sur;
- Low over the rest of the country.

# Exceedance Probability > 100/150/200 mm

Week 1: April 19 - 25, 2024

- Very high probability
- High Probability
- Moderate Probability
- Low Probability

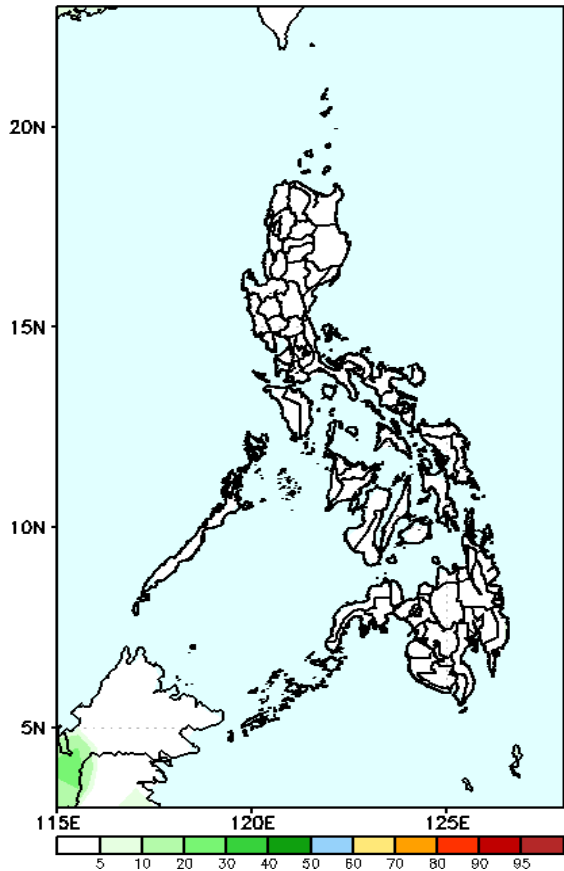
GEFS Week-1 Exceedance Prob. > 100mm  
Valid: 20240419 - 20240425



Probability to Exceed 100mm

- Low across the country.

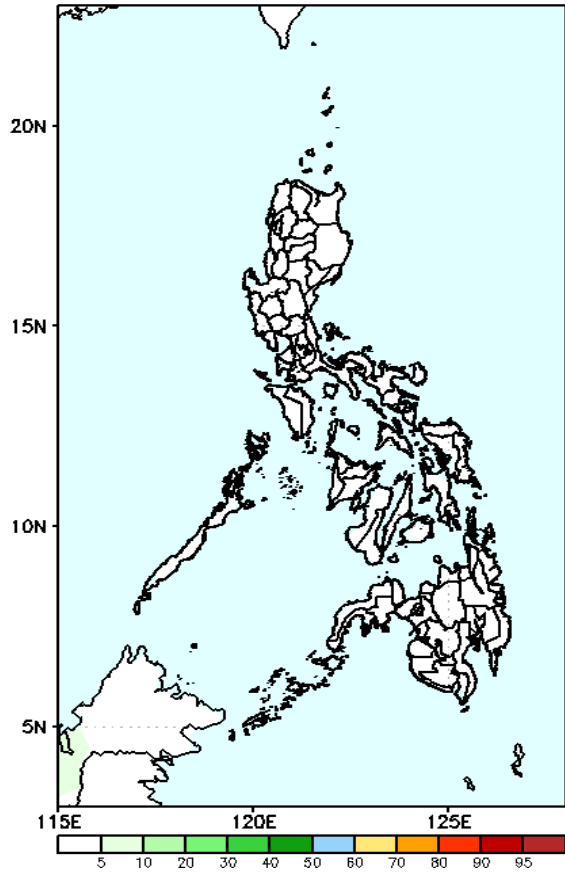
GEFS Week-1 Exceedance Prob. > 150mm  
Valid: 20240419 - 20240425



Probability to Exceed 150mm

- Low across the country.

GEFS Week-1 Exceedance Prob. > 200mm  
Valid: 20240419 - 20240425



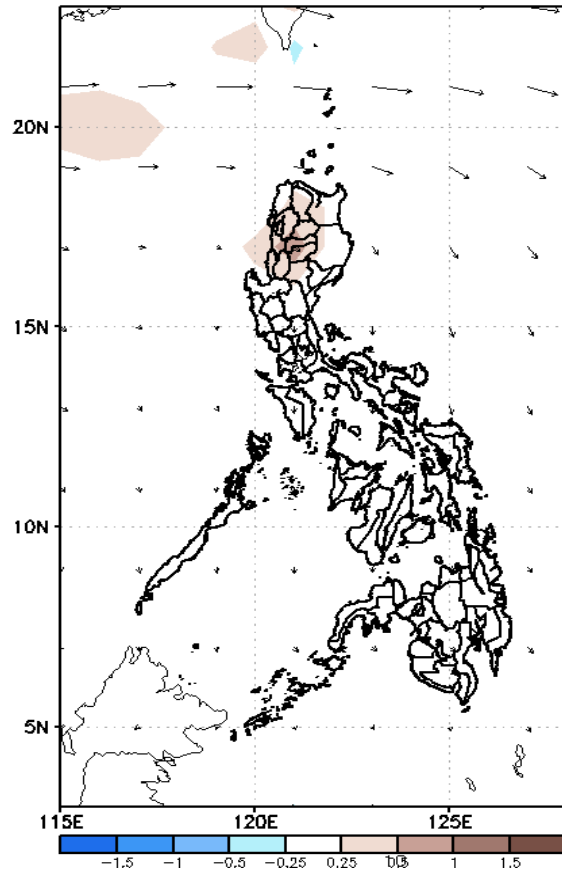
Probability to Exceed 200mm

- Low across the country.

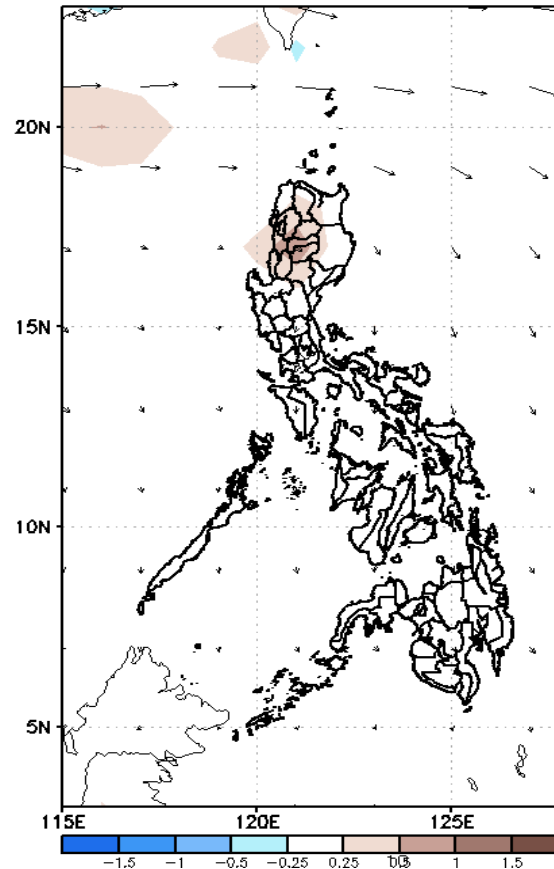
# GEFS Week-2 Wind Forecasts:

Week 2: Apr 26 – May 02, 2024

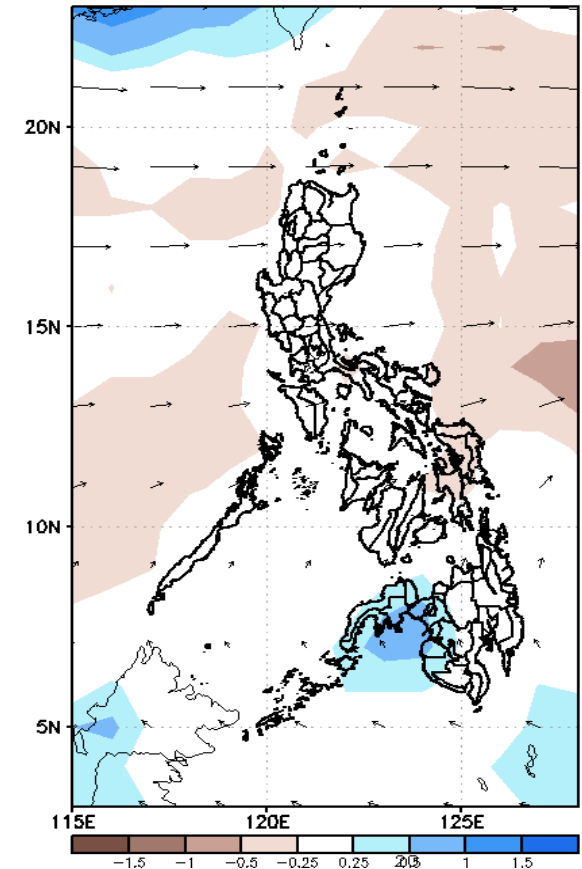
GEFS Week-2 850-hPa Divergence and Wind Anomaly  
Valid: 20240426 – 20240502



GEFS Week-2 700-hPa Divergence and Wind Anomaly  
Valid: 20240426 – 20240502

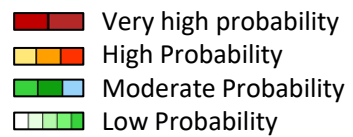


GEFS week-2 200-hPa Divergence and Wind Anomaly  
Valid: 20240426 – 20240502



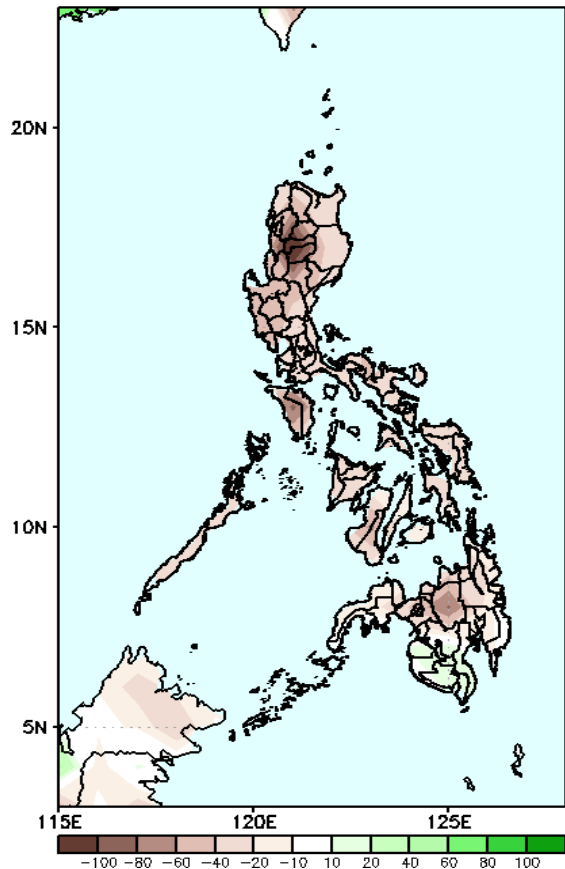
Easterlies will likely prevail in most parts of the country. Expect dry and warm days during the forecast period.

# Precipitation Anomaly and Exceedance Probability > 25/50 mm



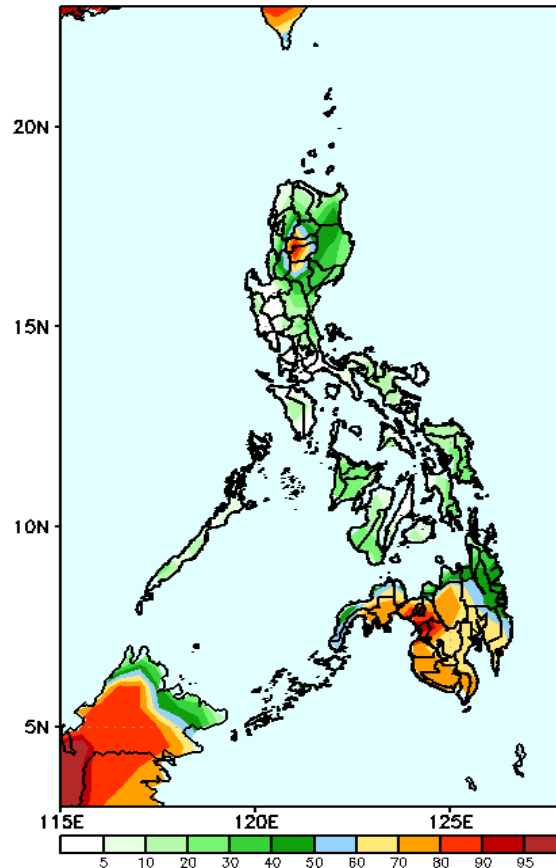
Week 2: Apr 26 – May 02, 2024

GEFS Week-2 Precip Anomaly  
Valid: 20240426 – 20240502



Rainfall deficit of 40-80mm in CAR and 20-60mm in most parts of the country.

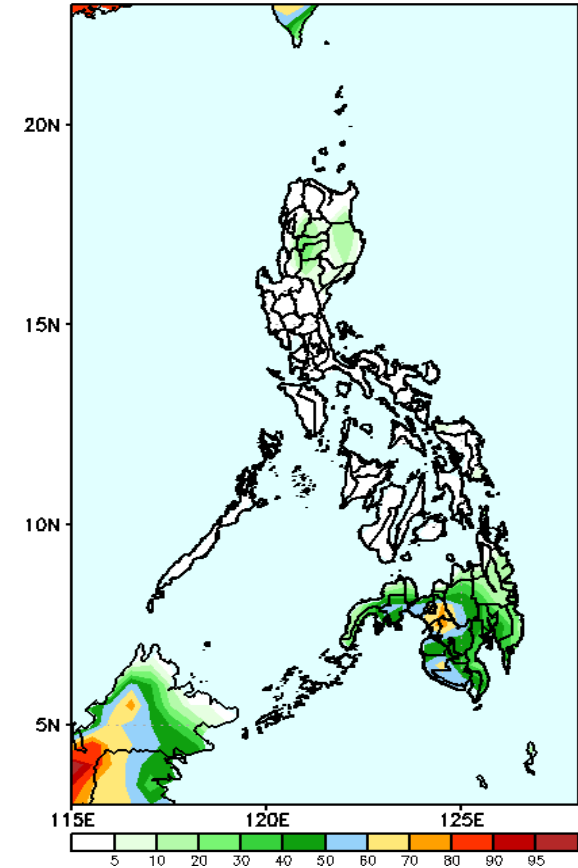
GEFS Week-2 Exceedance Prob. > 25mm  
Valid: 20240426 – 20240502



## Probability to Exceed 25mm

- Moderate to high over most of CAR and Mindanao;
- Low to moderate over the rest of the country.

GEFS Week-2 Exceedance Prob. > 50mm  
Valid: 20240426 – 20240502



## Probability to Exceed 50mm

- Moderate to high over the south and western portion of Mindanao;
- Low to moderate over the rest of Mindanao;
- Low over the Luzon and Visayas.

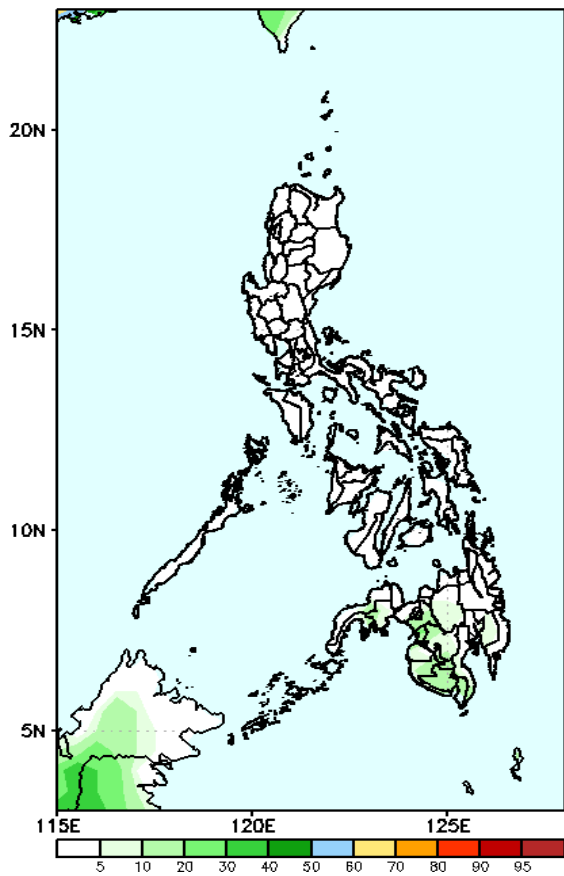


# Exceedance Probability > 100/150/200 mm

Week 2: Apr 26 – May 02, 2024

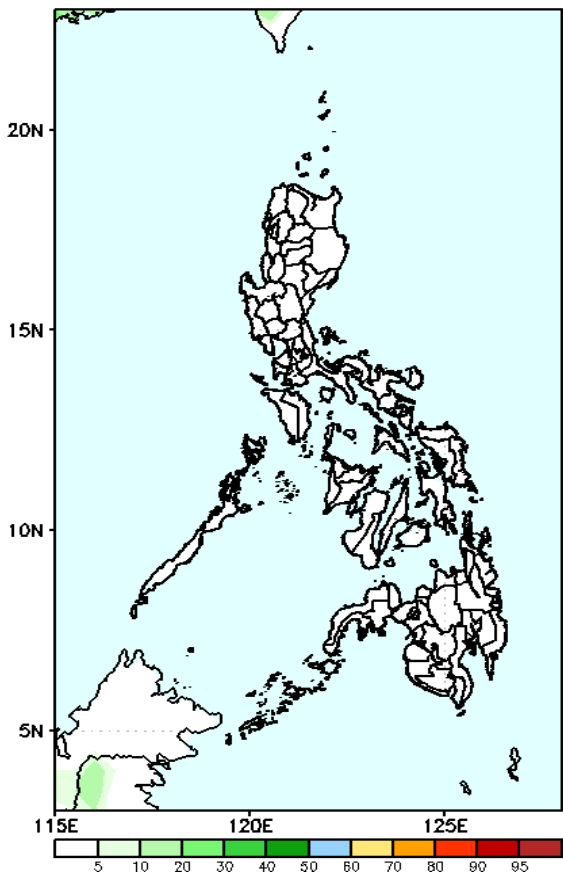
- Very high probability
- High Probability
- Moderate Probability
- Low Probability

GEFS Week-2 Exceedance Prob. > 100mm  
Valid: 20240426 – 20240502



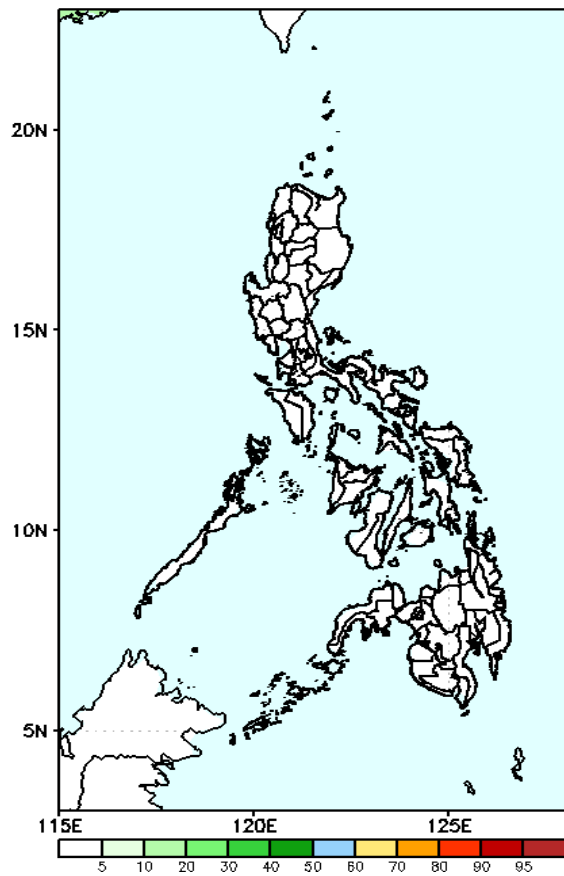
**Probability to Exceed 100mm**  
• Low across the country.

GEFS Week-2 Exceedance Prob. > 150mm  
Valid: 20240426 – 20240502



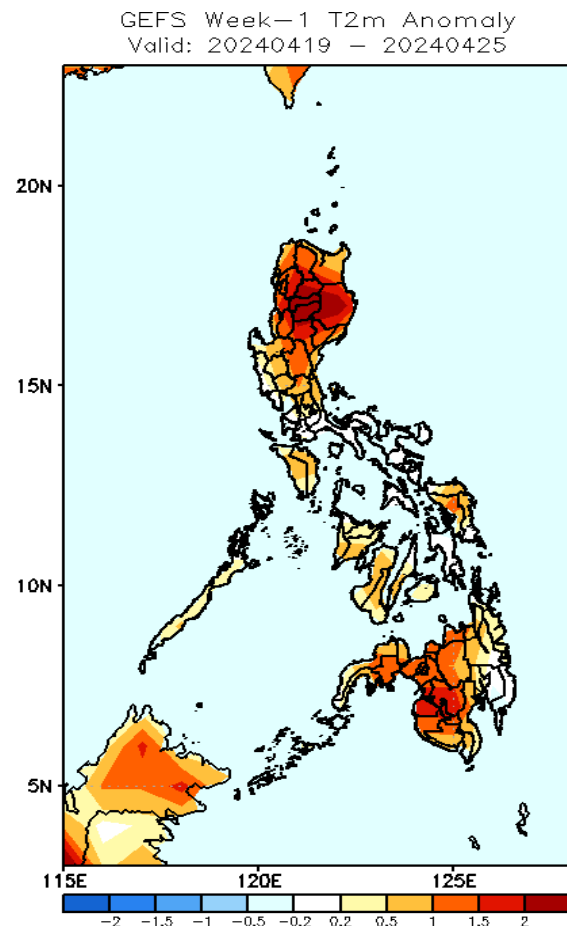
**Probability to Exceed 150mm**  
• Low across the country.

GEFS Week-2 Exceedance Prob. > 200mm  
Valid: 20240426 – 20240502



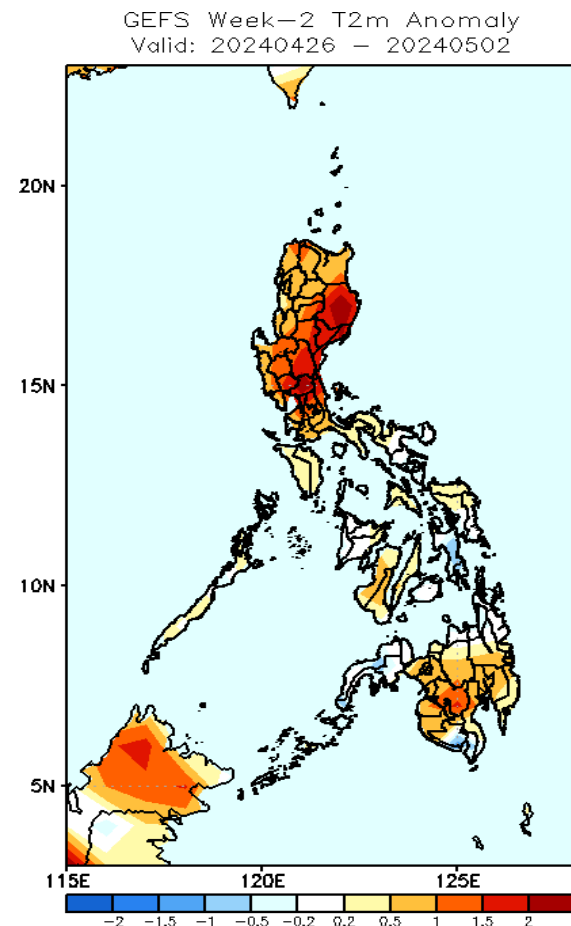
**Probability to Exceed 200mm**  
• Low across the country.

# GEFS Week-1 & 2 Forecasts: T2m Anomaly



## 2m Temperature Week 1: April 19-25, 2024

Slightly warmer to warmer than average surface air temperature will likely be experienced in most parts of the country.



## 2m Temperature Week 2: Apr 26 – May 02, 2024

Slightly warmer to warmer than average surface air temperature will likely be experienced in most parts of the country except Leyte provinces and Zamboanga Peninsula were near to slightly cooler than average surface air temperature is likely.