



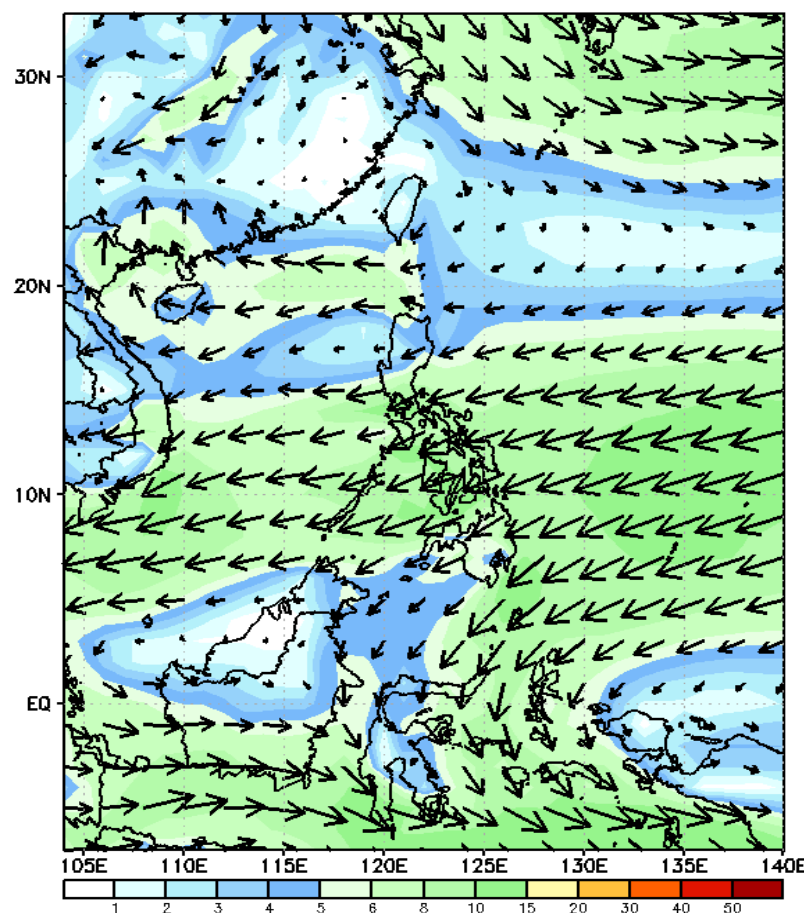
Week 1 & Week 2 Forecast for the Philippines using GEFS Model



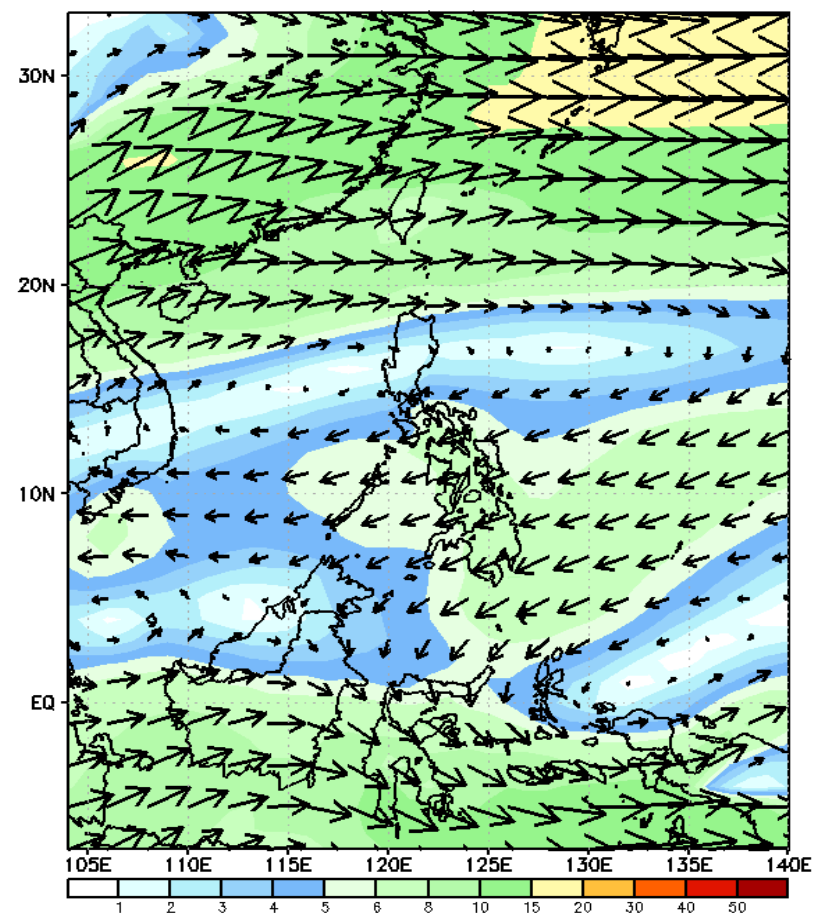
GEFS Week-1 Forecasts: Wind Forecast

Week 1: January 19-25, 2024

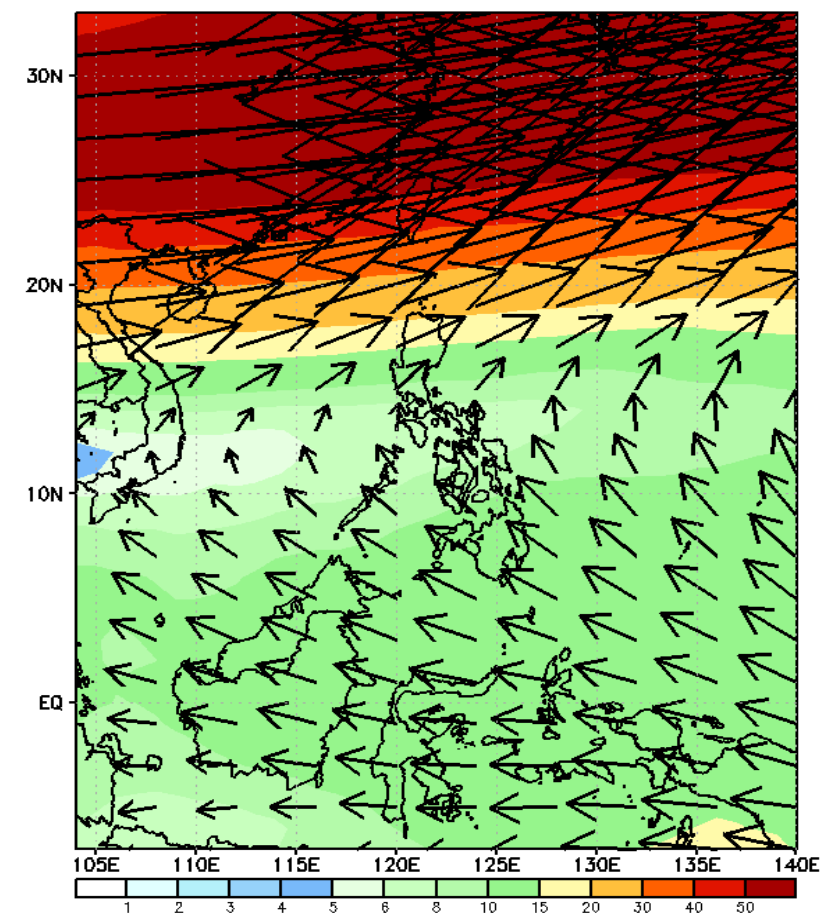
GEFS Week-1 850-hPa Wind Total
Valid: 20240119 - 20240125



GEFS Week-1 700-hPa Wind Total
Valid: 20240119 - 20240125



GEFS Week-1 200-hPa Wind Total
Valid: 20240119 - 20240125



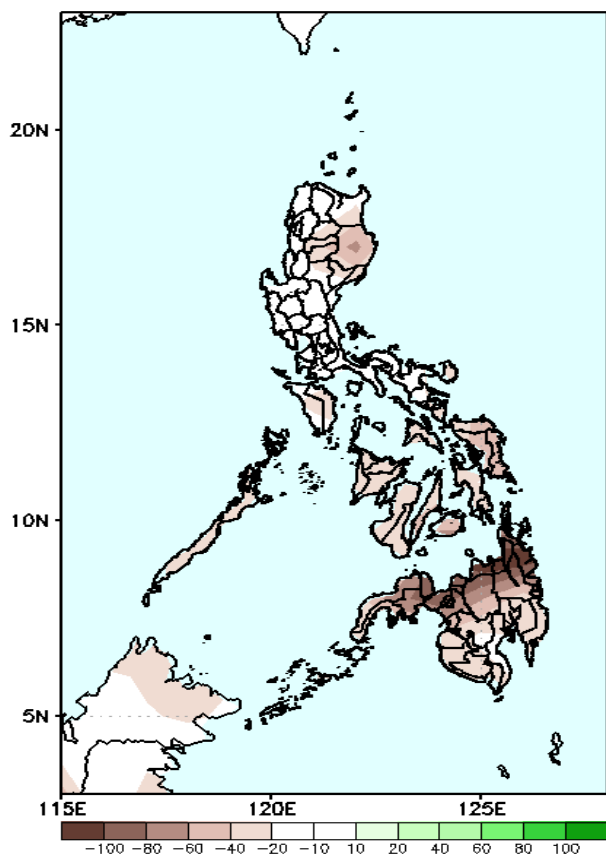
Northeast Monsoon will likely affect Northern Luzon, while easterlies affect the rest of the country.

Precipitation Anomaly and Exceedance Probability > 25/50 mm



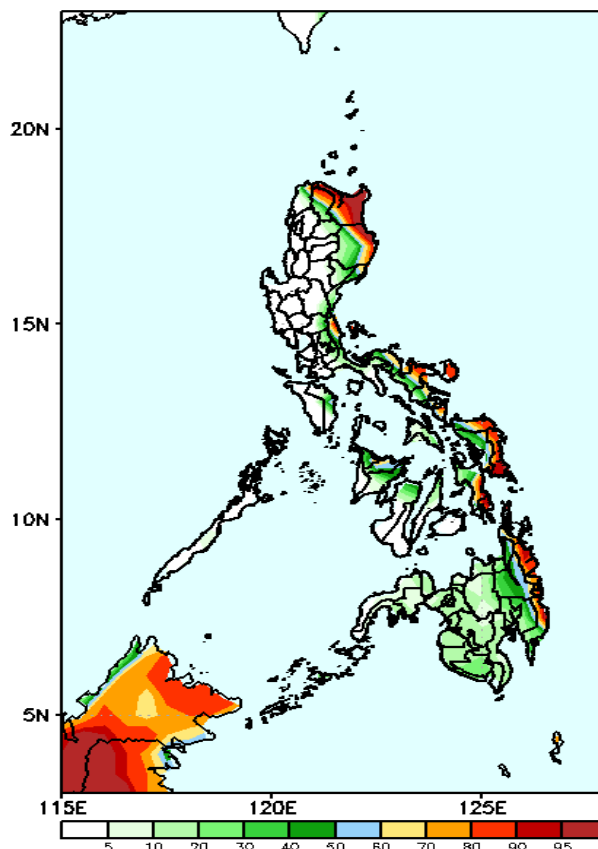
Week 1: January 19-25, 2024

GEFS Week-1 Precip Anomaly
Valid: 20240119 - 20240125



Rainfall deficit of 40-60mm in most parts of the country. Moreover, a deficit of more than 100mm is forecasted in Northern Mindanao.

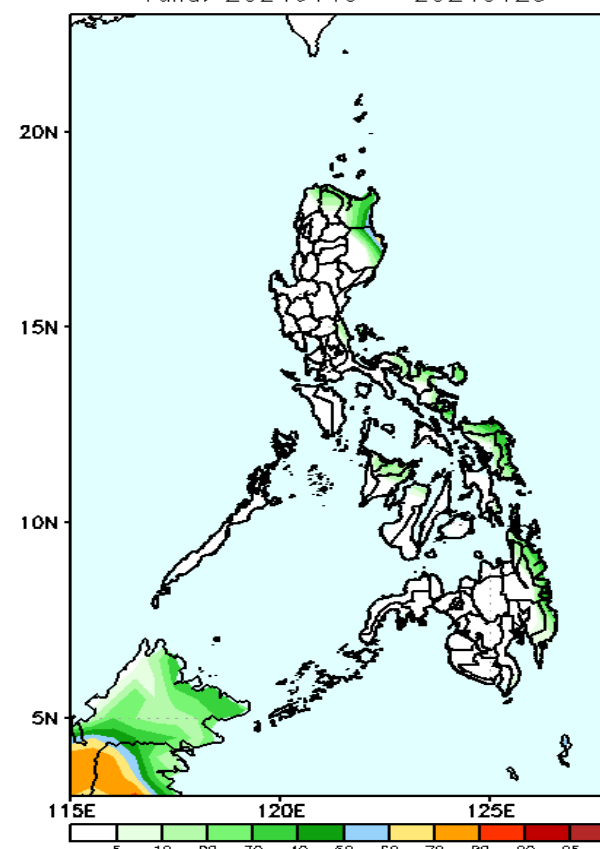
GEFS Week-1 Exceedance Prob. > 25mm
Valid: 20240119 - 20240125



Probability to Exceed 25mm

- High to very high over portions of Apayao, Cagayan and the eastern portions of Isabela, Bicol region, Eastern Visayas and eastern Caraga;
- Moderate to high over the rest of Bicol region, Isabela and Eastern Visayas, northern Quezon, Aklan, Capiz, and the rest of eastern Mindanao;
- Low to moderate over the rest of the country.

GEFS Week-1 Exceedance Prob. > 50mm
Valid: 20240119 - 20240125

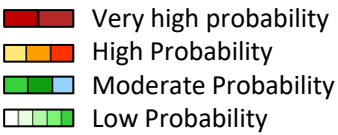


Probability to Exceed 50mm

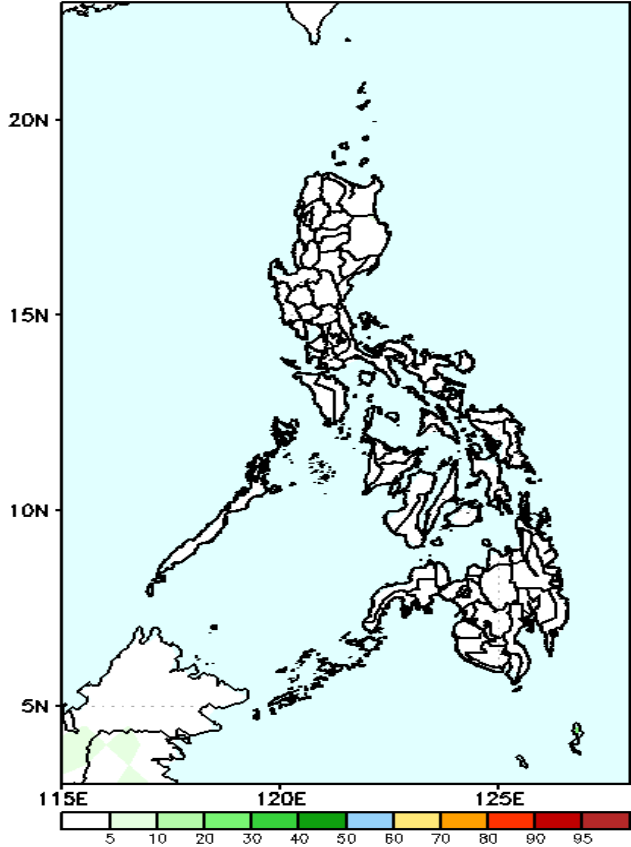
- Moderate to high over eastern portions of Cagayan and Isabela;
- Low to moderate over the eastern portions of Bicol Region, Visayas and Mindanao;
- Low over the rest of the country.

Exceedance Probability > 100/150/200 mm

Week 1: January 19-25, 2024



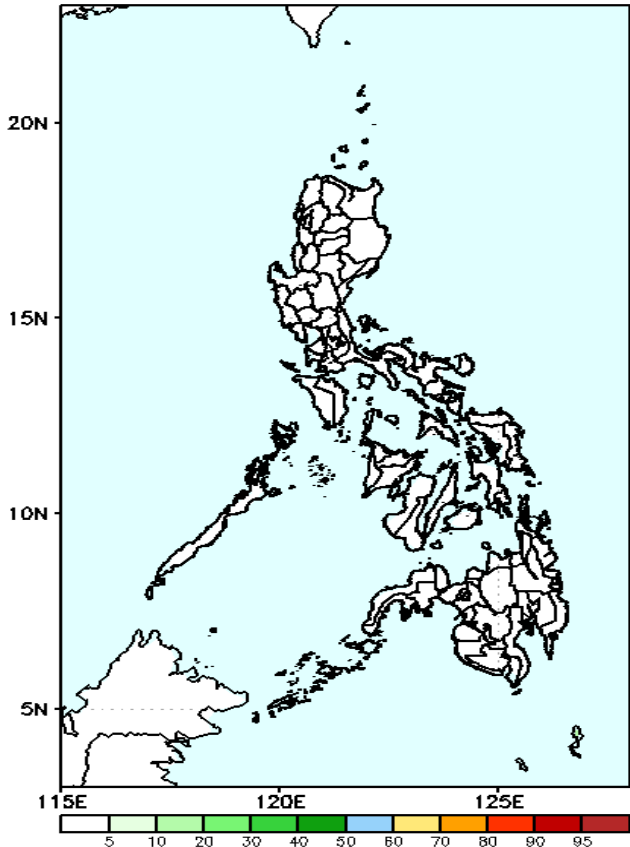
GEFS Week-1 Exceedance Prob. > 100mm
Valid: 20240119 - 20240125



Probability to Exceed 100mm

- Low across the country.

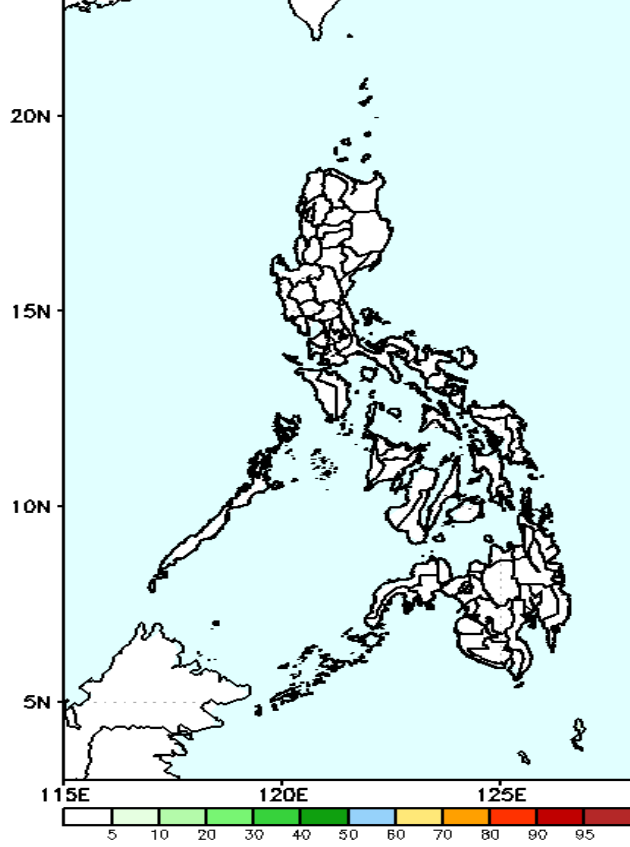
GEFS Week-1 Exceedance Prob. > 150mm
Valid: 20240119 - 20240125



Probability to Exceed 150mm

- Low across the country.

GEFS Week-1 Exceedance Prob. > 200mm
Valid: 20240119 - 20240125



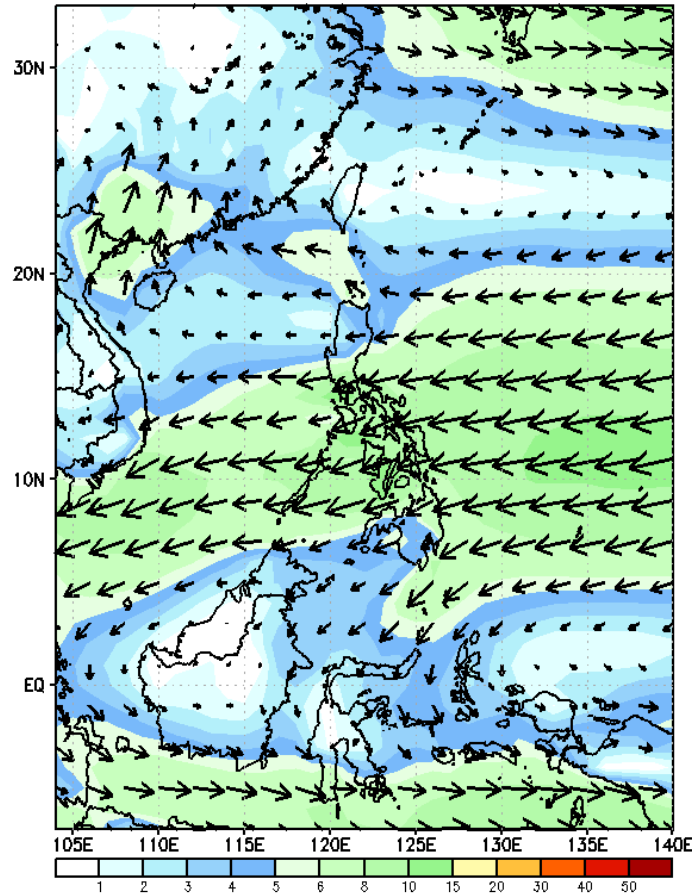
Probability to Exceed 200mm

- Low across the country.

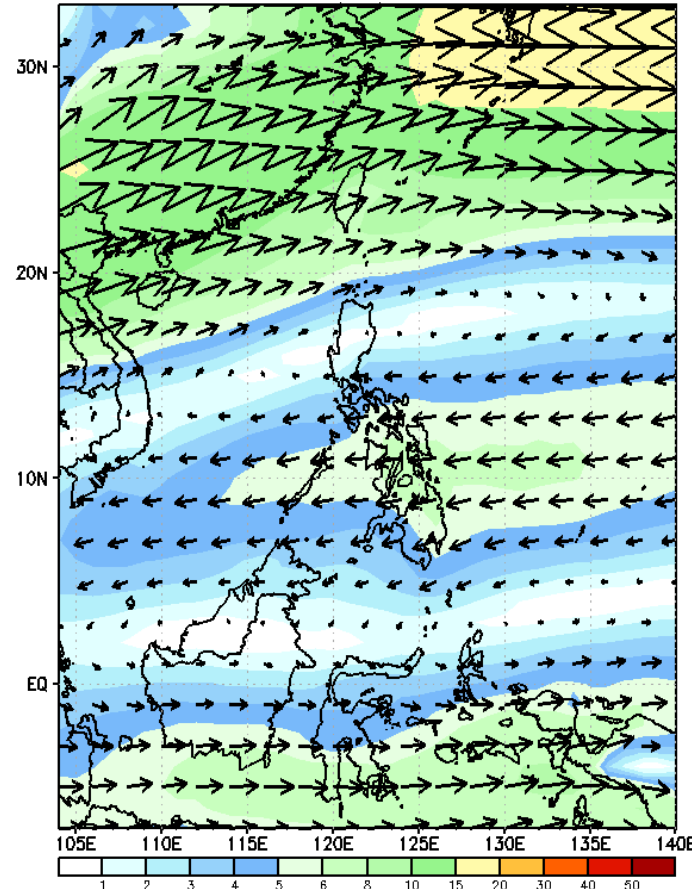
GEFS Week-2 Forecasts: Wind Forecast

Week 2: January 26- February 01, 2024

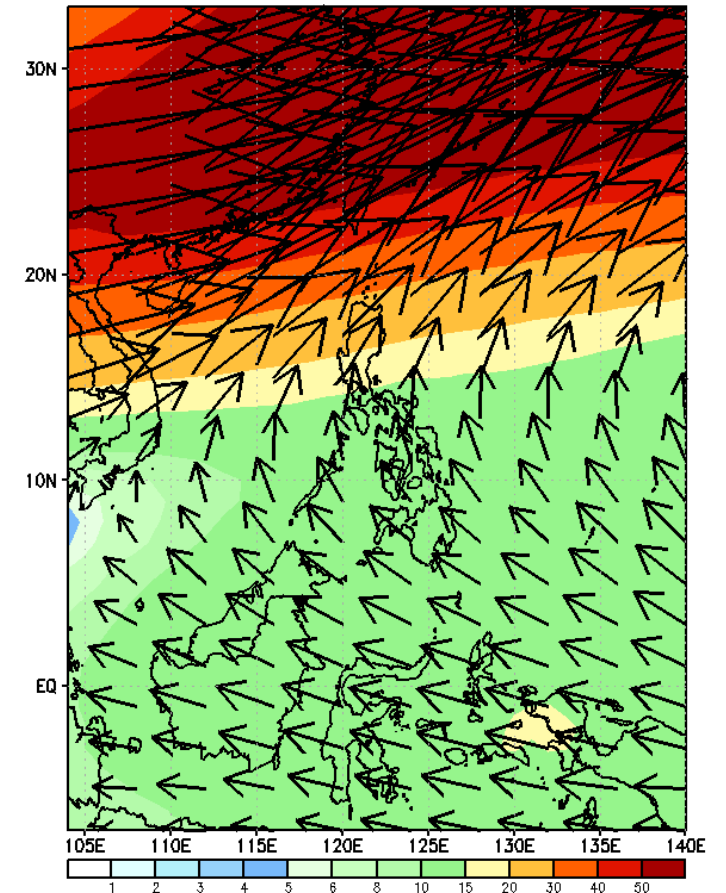
GEFS Week-2 850-hPa Wind Total
Valid: 20240126 - 20240201



GEFS Week-2 700-hPa Wind Total
Valid: 20240126 - 20240201

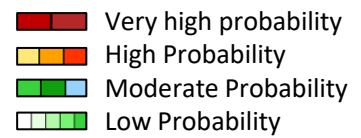


GEFS Week-2 200-hPa Wind Total
Valid: 20240126 - 20240201



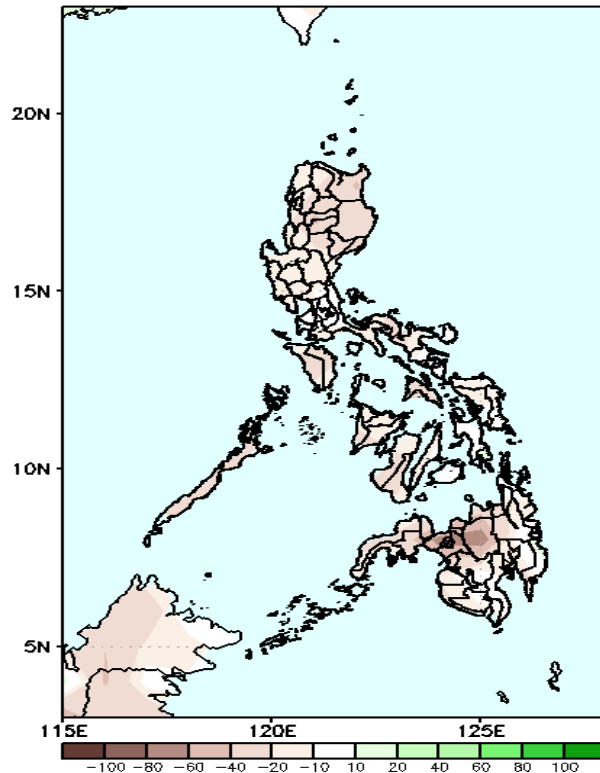
Northeast Monsoon affecting Extreme Northern Luzon; Easterlies affecting Visayas and Mindanao.

Precipitation Anomaly and Exceedance Probability > 25/50 mm



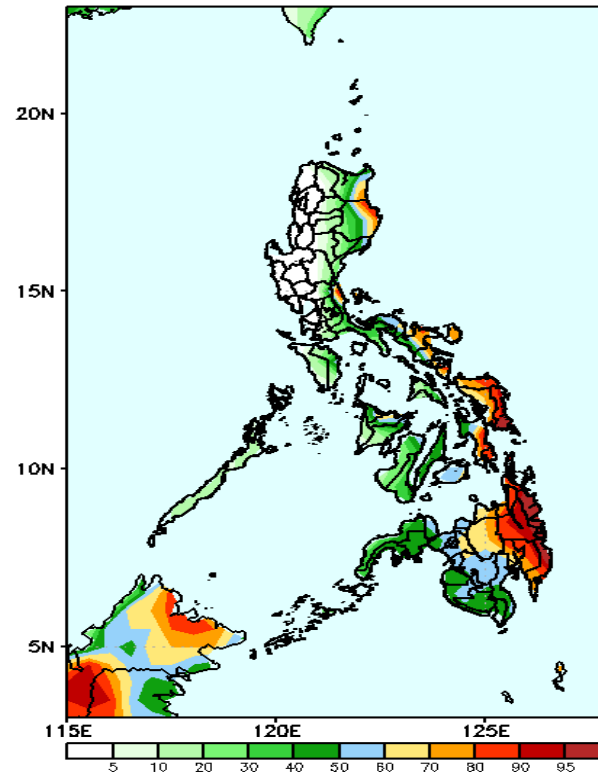
Week 2: January 26- February 01, 2024

GEFS Week-2 Precip Anomaly
Valid: 20240126 - 20240201



Rainfall deficit of 20-60mm in most parts of the country.

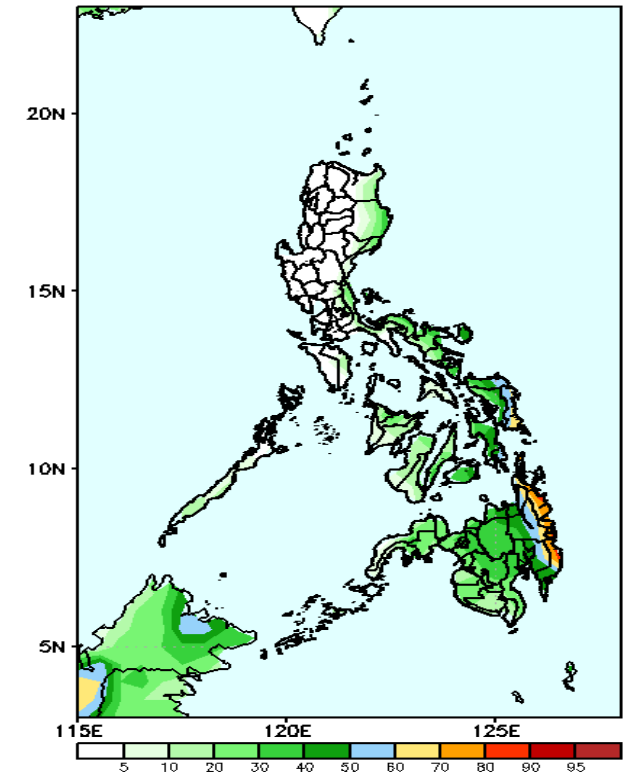
GEFS Week-2 Exceedance Prob. > 25mm
Valid: 20240126 - 20240201



Probability to Exceed 25mm

- High to very high over Samar provinces and Eastern Mindanao;
- Moderate to high over Bicol Region, the eastern portions of Cagayan, Isabela and Quezon, Capiz, Aklan, and the rest of Mindanao and Eastern Visayas;
- Low to moderate over the rest of the country.

GEFS Week-2 Exceedance Prob. > 50mm
Valid: 20240126 - 20240201

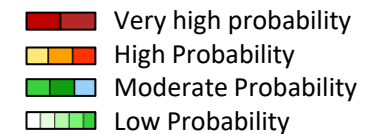


Probability to Exceed 50mm

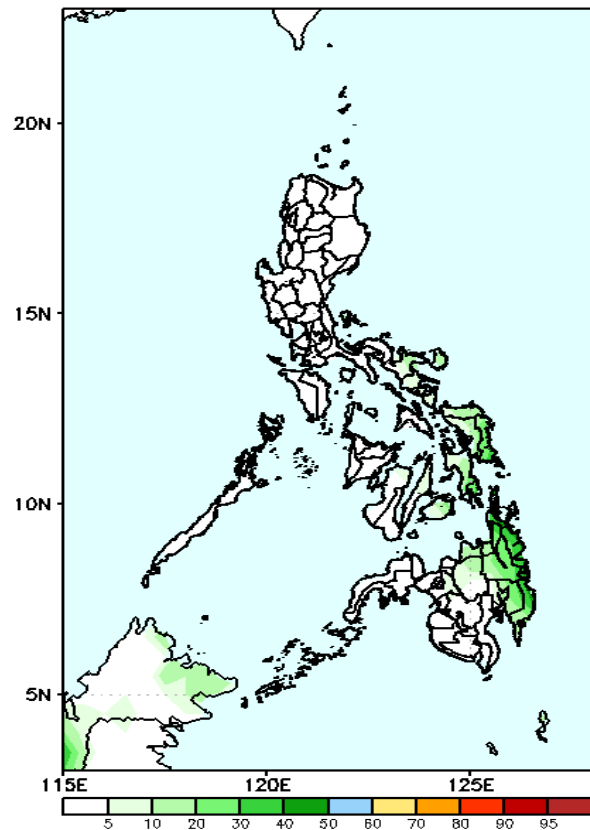
- Moderate to high over Caraga;
- Low to moderate over the eastern portion of Eastern Visayas and the rest of Mindanao;
- Low elsewhere..

Exceedance Probability > 100/150/200 mm

Week 2: January 26- February 01, 2024



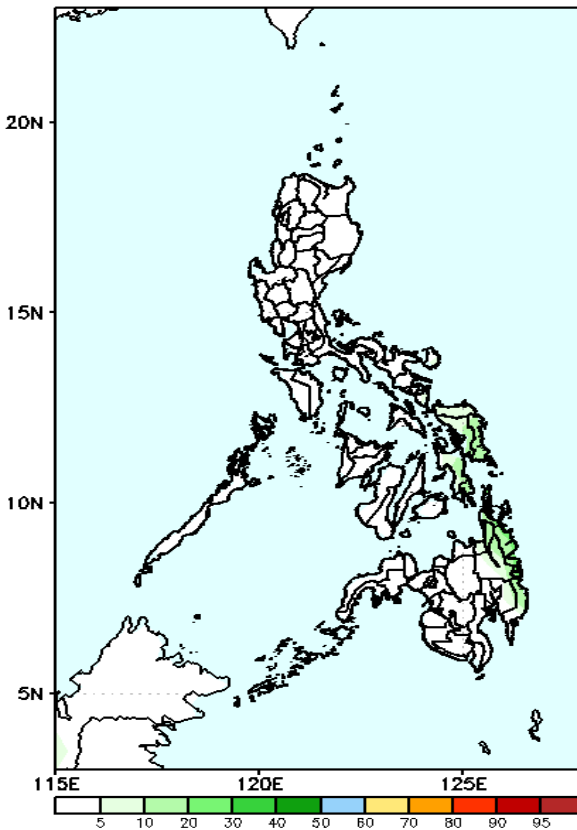
GEFS Week-2 Exceedance Prob. > 100mm
Valid: 20240126 – 20240201



Probability to Exceed 100mm

- Low to moderate over eastern Mindanao
- Low over the rest of the country.

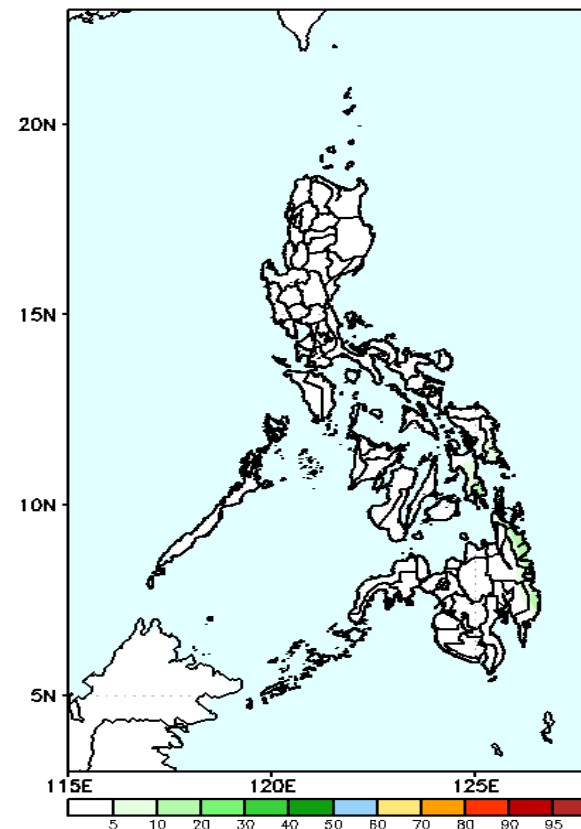
GEFS Week-2 Exceedance Prob. > 150mm
Valid: 20240126 – 20240201



Probability to Exceed 150mm

- Low across the country.

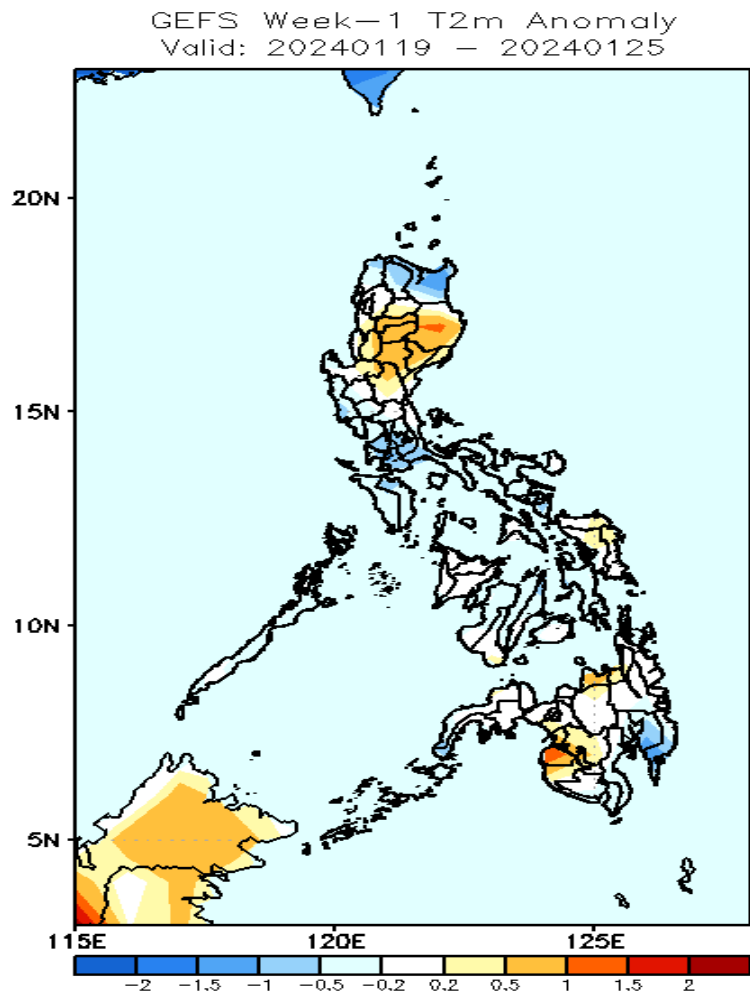
GEFS Week-2 Exceedance Prob. > 200mm
Valid: 20240126 – 20240201



Probability to Exceed 200mm

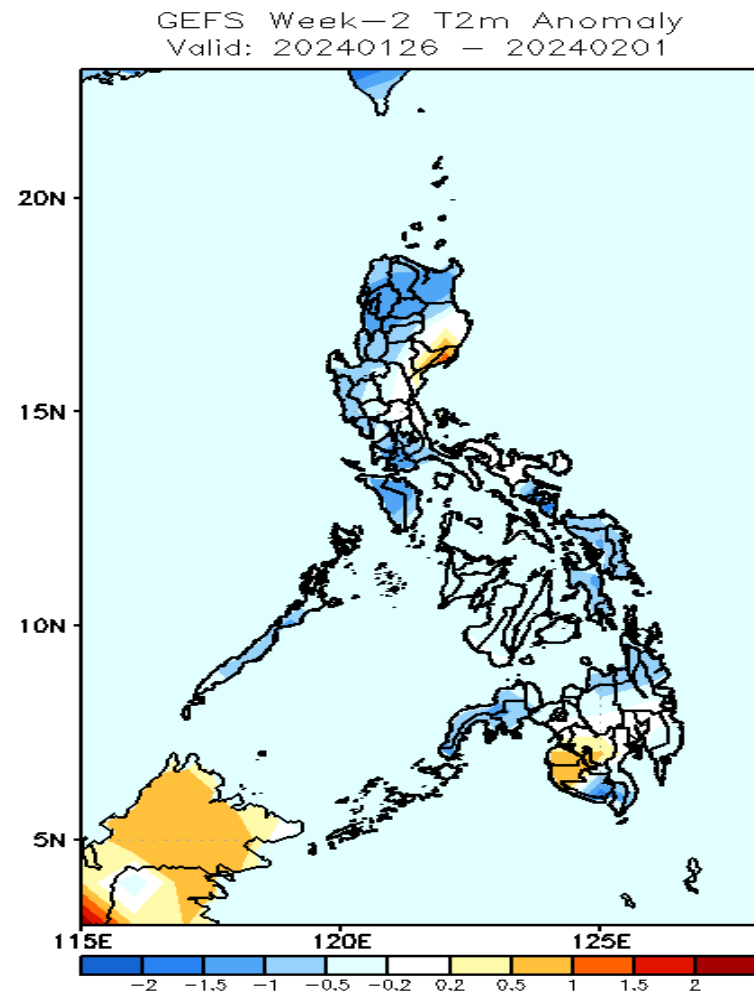
- Low across the country.

GEFS Week-1 & 2 Forecasts: T2m Anomaly



2m Temperature Week 1: January 19-25, 2024

Near to slightly cooler than average surface air temperature average will likely be experienced in most parts country except in Isabela, Mt. Province, Ifugao, Nueva Vizcaya, Misamis Oriental, and Maguindanao where slightly warmer to warmer than average temperature is expected.



2m Temperature Week 2: January 26- February 01, 2024

Slightly cooler to cooler than average surface air temperature will likely be experienced in most parts of the country except in Aurora, Maguindanao and Sultan Kudarat where slightly warmer than average temperature is expected.