



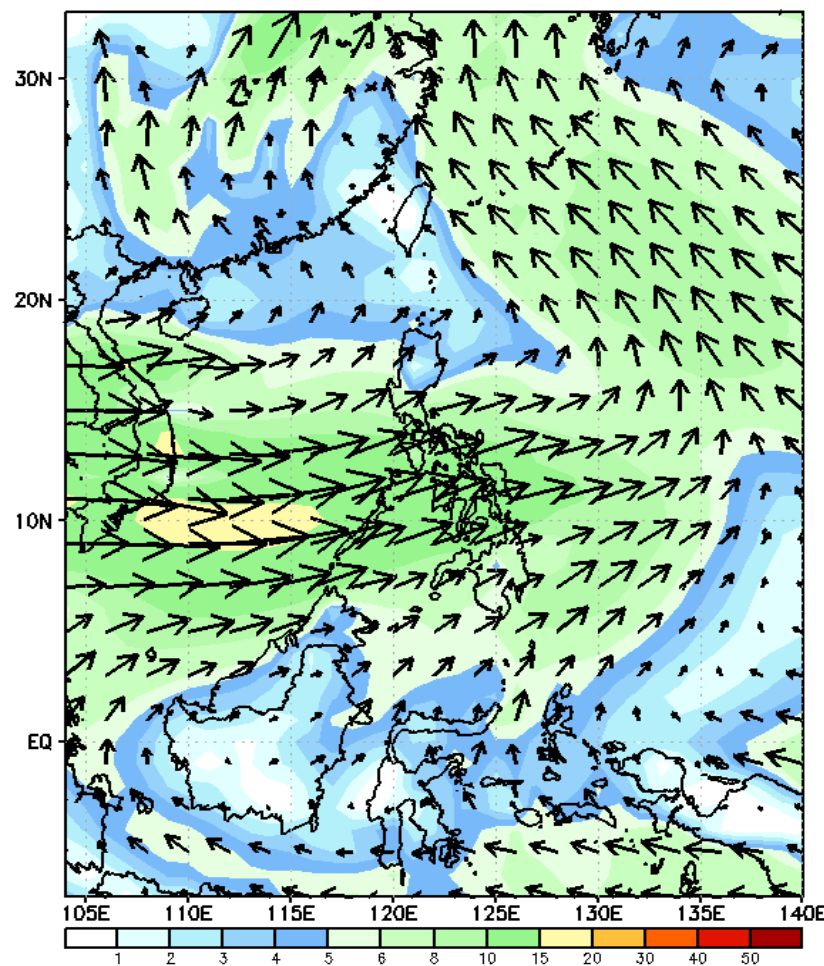
Week 1 & Week 2 Forecast for the Philippines using GEFS Model



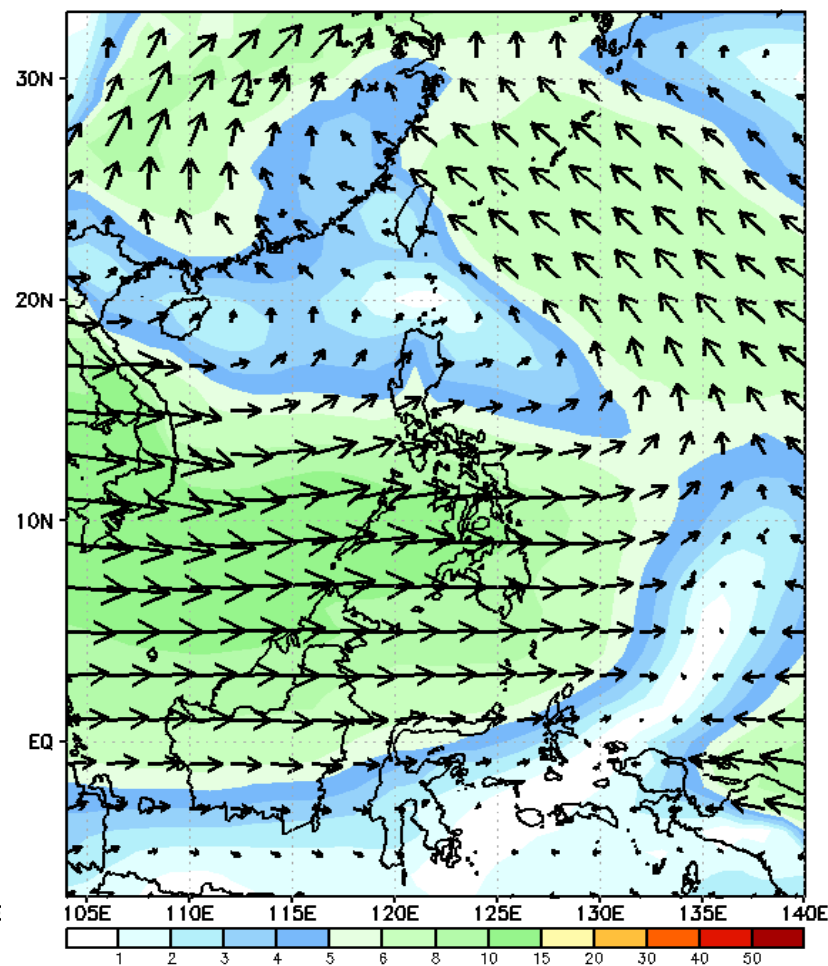
GEFS Week-1 Wind Forecasts:

Week 1: Jul 19-25, 2024

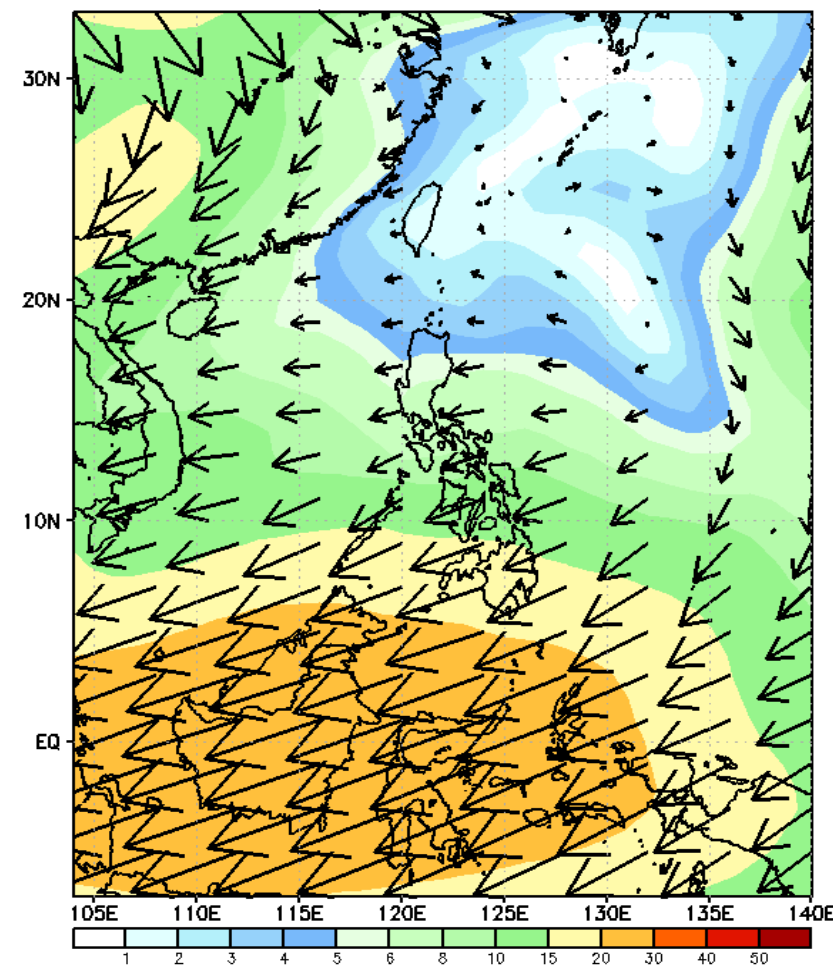
GEFS Week-1 850-hPa Wind Total
Valid: 20240719 - 20240725



GEFS Week-1 700-hPa Wind Total
Valid: 20240719 - 20240725

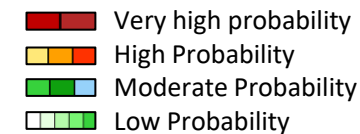


GEFS Week-1 200-hPa Wind Total
Valid: 20240719 - 20240725



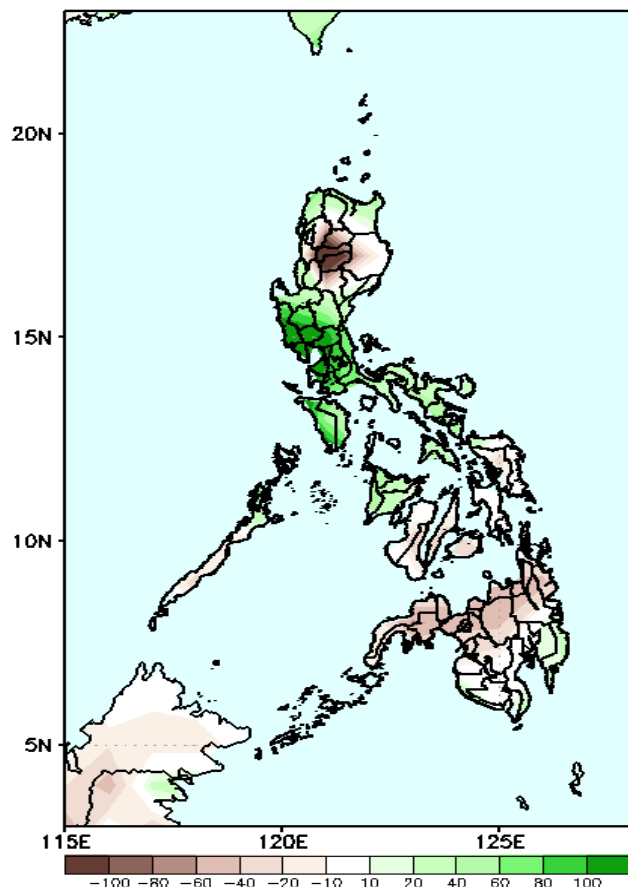
Southwest Monsoon affecting most parts of the country during the forecast period

Precipitation Anomaly and Exceedance Probability > 25/50 mm



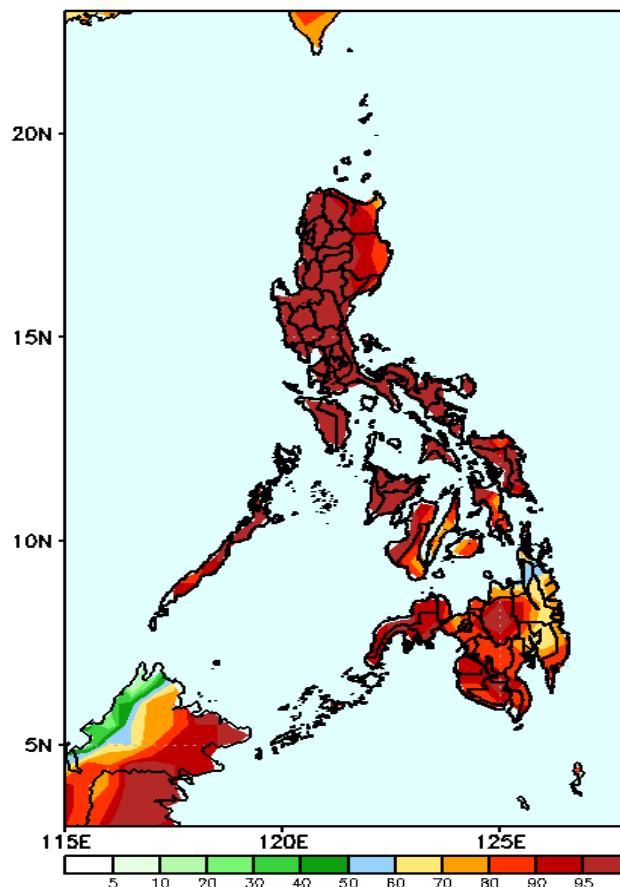
Week 1: Jul 19-25, 2024

GEFS Week-1 Precip Anomaly
Valid: 20240719 - 20240725



Rainfall deficit of more than 100mm in most parts of Mt. Province and Ifugao; 20-60mm over the rest of Northern Luzon and most parts of Visayas and Mindanao while 20-100mm increase of rainfall will be likely for the rest of Luzon and Panay Island.

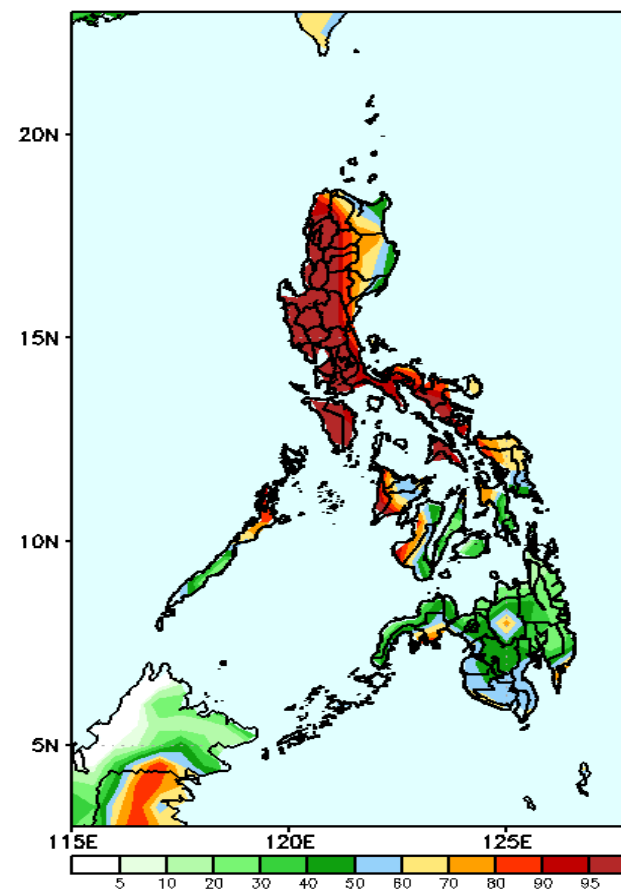
GEFS Week-1 Exceedance Prob. > 25mm
Valid: 20240719 - 20240725



Probability to Exceed 25mm

- High to very high across the country;

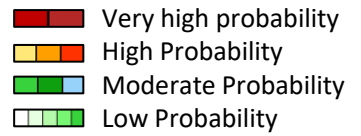
GEFS Week-1 Exceedance Prob. > 50mm
Valid: 20240719 - 20240725



Probability to Exceed 50mm

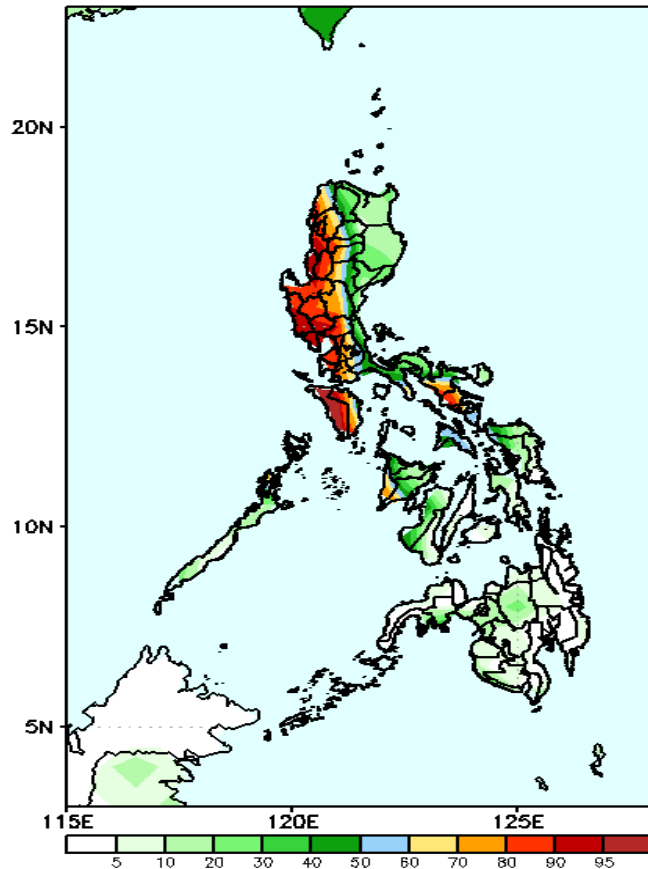
- High to very high over most parts of Luzon;
- Moderate to high over Cagayan, Isabela, Palawan, Panay, Negros Occidental, most of Eastern Visayas, and the southwestern area of Mindanao;
- Low to moderate over the rest of Visayas and Mindanao.

Exceedance Probability > 100/150/200 mm



Week 1: Jul 19-25, 2024

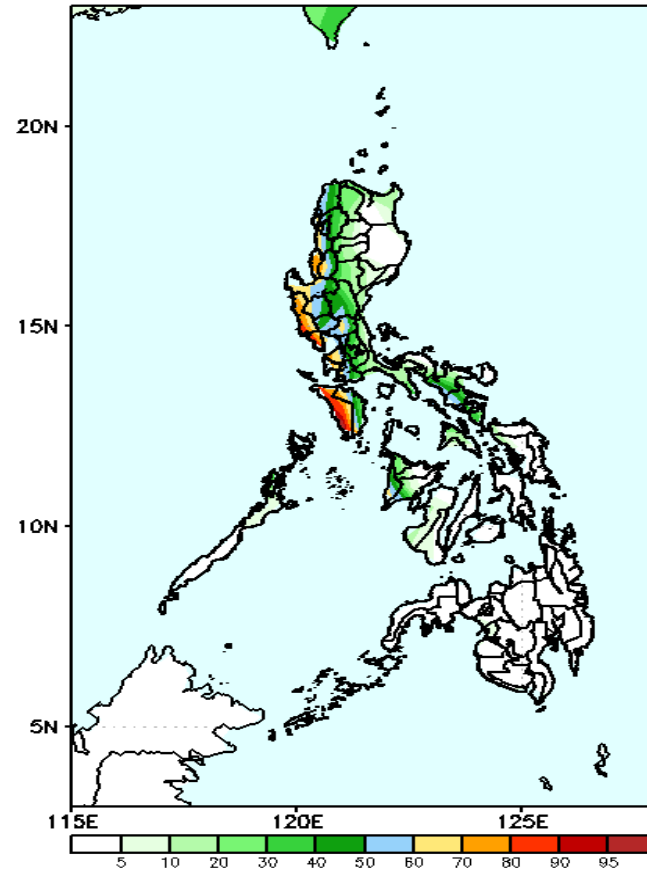
GEFS Week-1 Exceedance Prob. > 100mm
Valid: 20240719 - 20240725



Probability to Exceed 100mm

- High to very high over most parts of Western and Central Luzon (except Aurora and Palawan);
- Luzon Moderate to high over Quezon, Camarines Sur, Albay, Sorsogon, Antique and western portion of Iloilo;
- Low to moderate over the rest of the country.

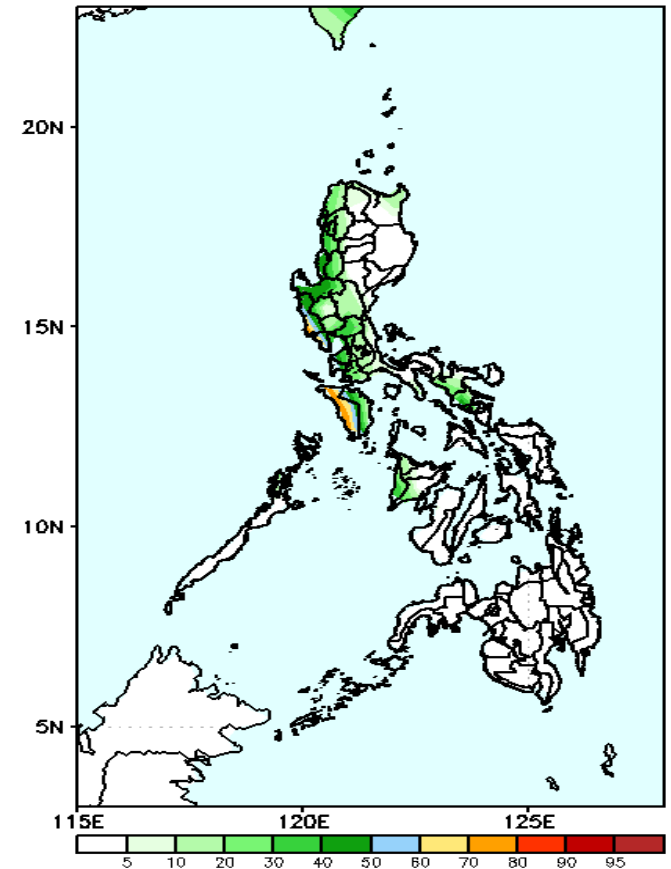
GEFS Week-1 Exceedance Prob. > 150mm
Valid: 20240719 - 20240725



Probability to Exceed 150mm

- High to very high over Occidental Mindoro;
- Moderate to high over most parts of Western and Central Luzon (except Aurora and Palawan) and Antique;
- Low to moderate over the rest of Luzon;
- Low over the rest of Visayas and Mindanao.

GEFS Week-1 Exceedance Prob. > 200mm
Valid: 20240719 - 20240725



Probability to Exceed 200mm

- Moderate to high over Pangasinan, La Union, Zambales, Bataan, Cavite, Batangas, and Occidental Mindoro;
- Low over the rest of the country.



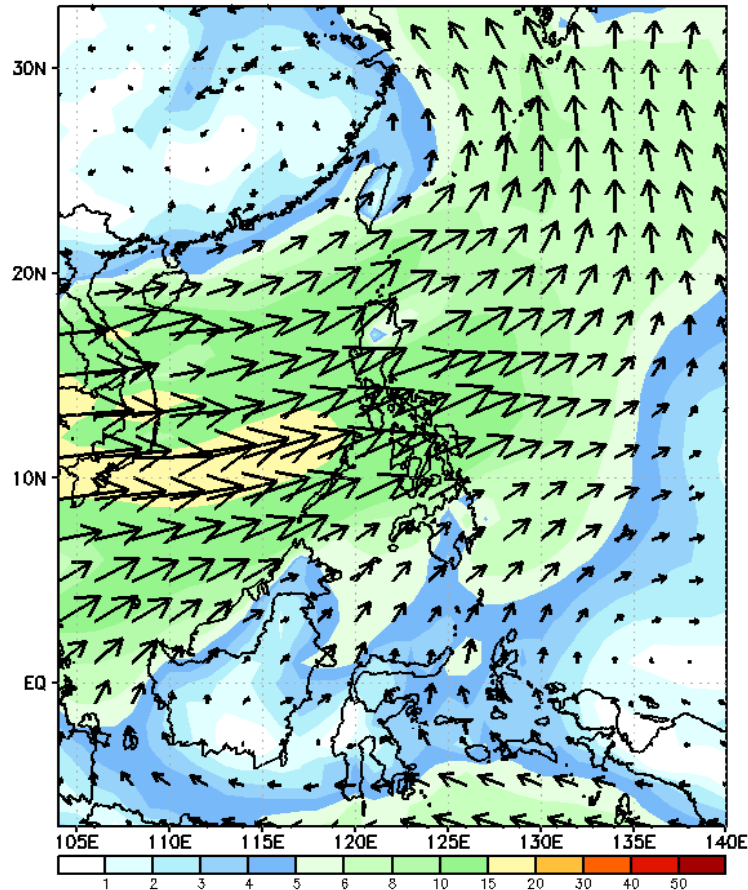
The Weather and Climate Authority



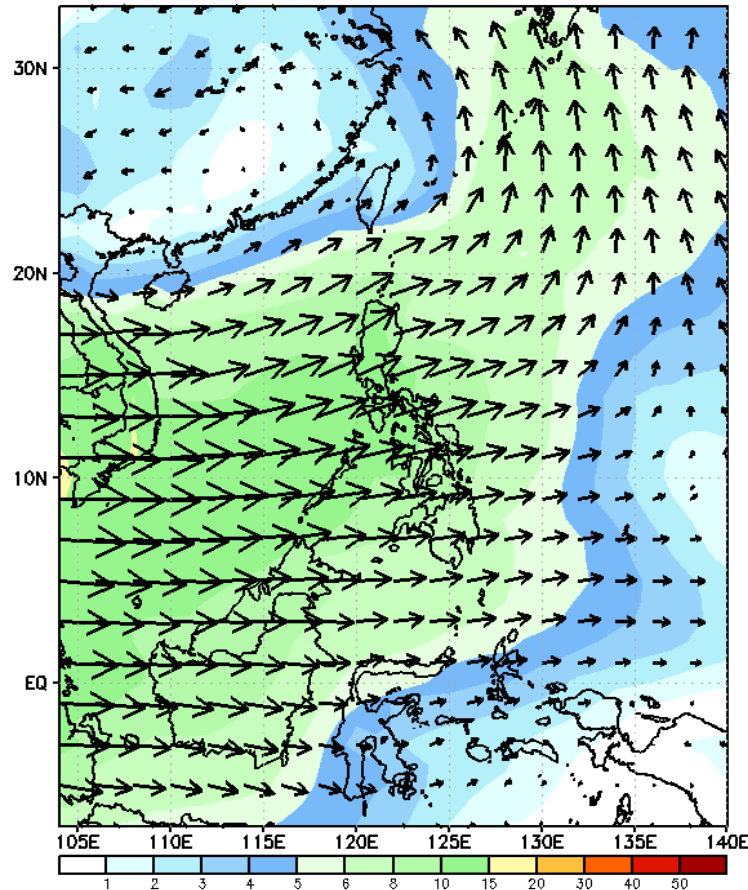
GEFS Week-2 Wind Forecasts:

Week 2: Jul 26- Aug 01, 2024

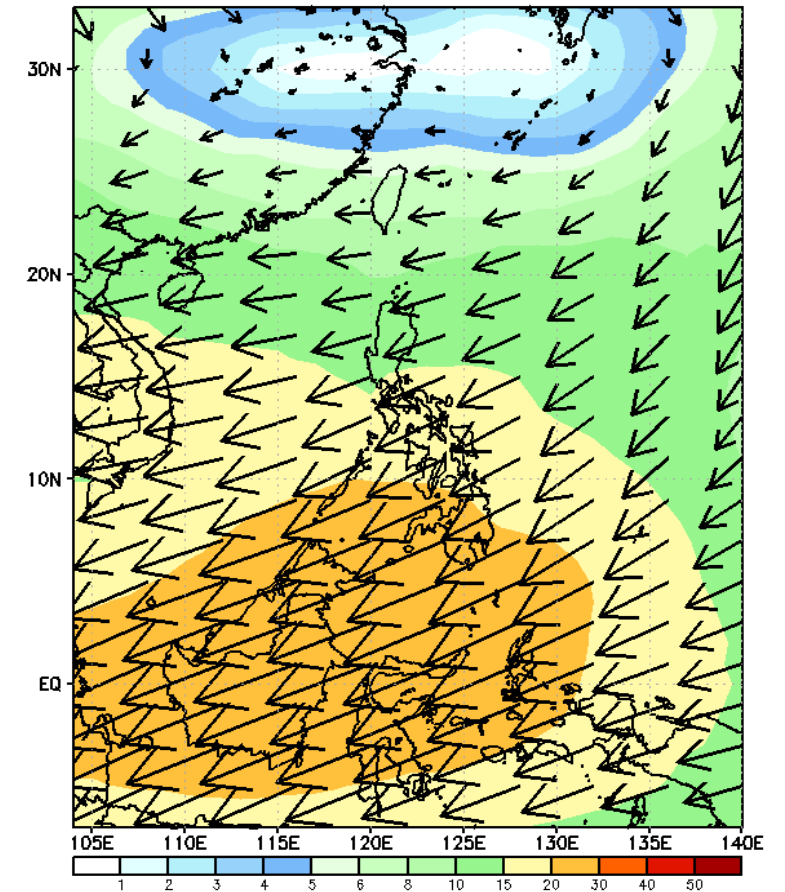
GEFS Week-2 850-hPa Wind Total
Valid: 20240726 - 20240801



GEFS Week-2 700-hPa Wind Total
Valid: 20240726 - 20240801

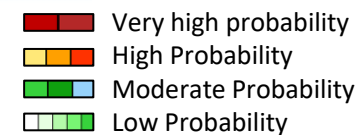


GEFS Week-2 200-hPa Wind Total
Valid: 20240726 - 20240801



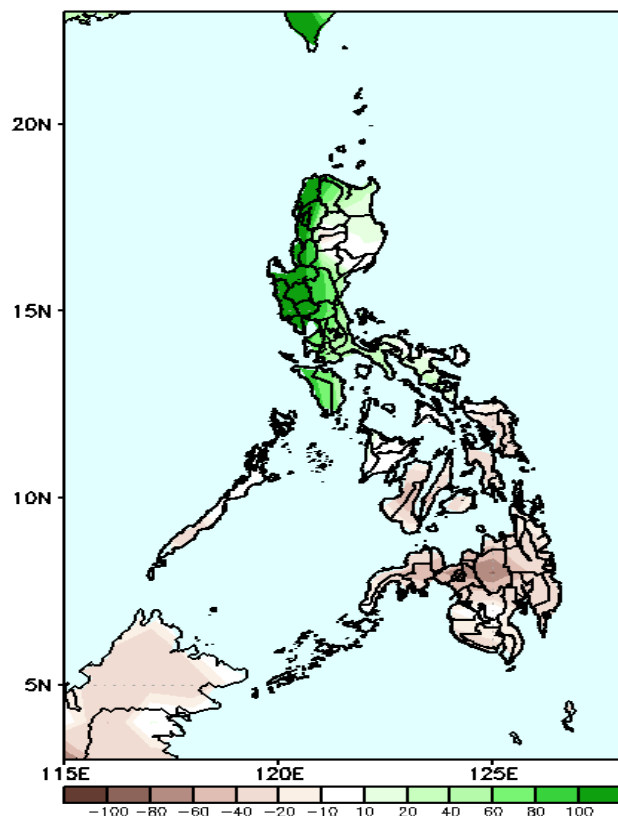
Southwest Monsoon affecting most parts of the country. Moreover, enhance SWM will likely affect most of Western Luzon during the forecast period

Precipitation Anomaly and Exceedance Probability > 25/50 mm



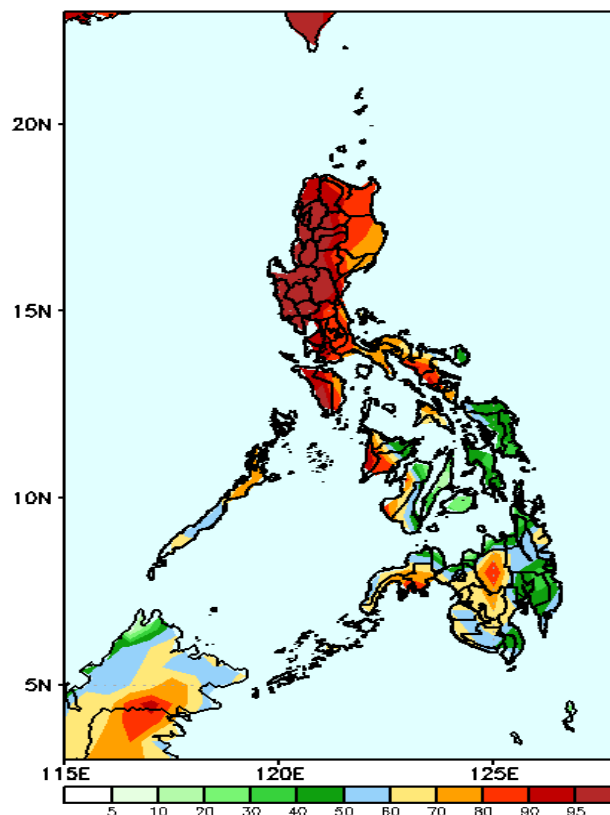
Week 2: Jul 26- Aug 01, 2024

GEFS Week-2 Precip Anomaly
Valid: 20240726 - 20240801



Increase of rainfall of 40-100mm in most parts of Western and Central Luzon while 20-60mm Rainfall deficit is expected for the rest of the country.

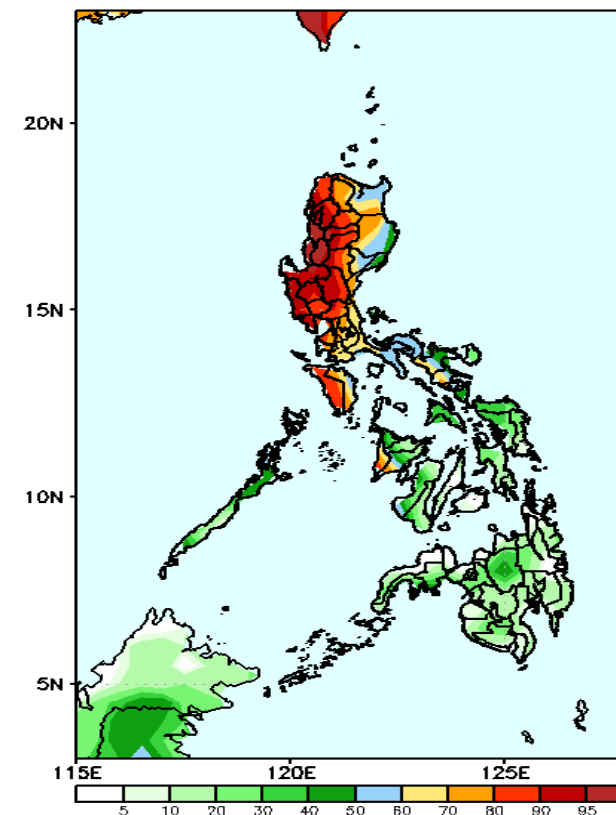
GEFS Week-2 Exceedance Prob. > 25mm
Valid: 20240726 - 20240801



Probability to Exceed 25mm

- High to very high over most parts of Luzon;
- Moderate to high over Bicol Region, Palawan, Western and Eastern Visayas, and most of Mindanao;
- Low to moderate of Central Visayas.

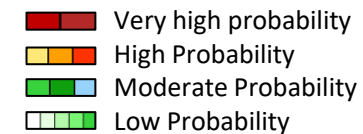
GEFS Week-2 Exceedance Prob. > 50mm
Valid: 20240726 - 20240801



Probability to Exceed 50mm

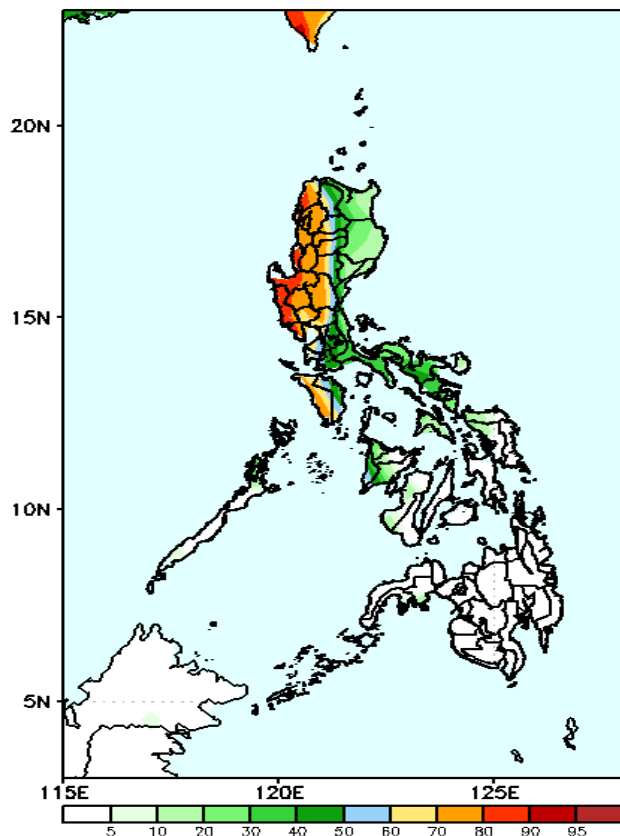
- High to very high over Ilocos Region, CAR, and Central Luzon;
- Moderate to high over Cagayan Valley, NCR, Southern Luzon (except Palawan), Antique and western portion of Iloilo;
- Low to moderate over the rest of Visayas and Mindanao.

Exceedance Probability > 100/150/200 mm



Week 2: Jul 26- Aug 01, 2024

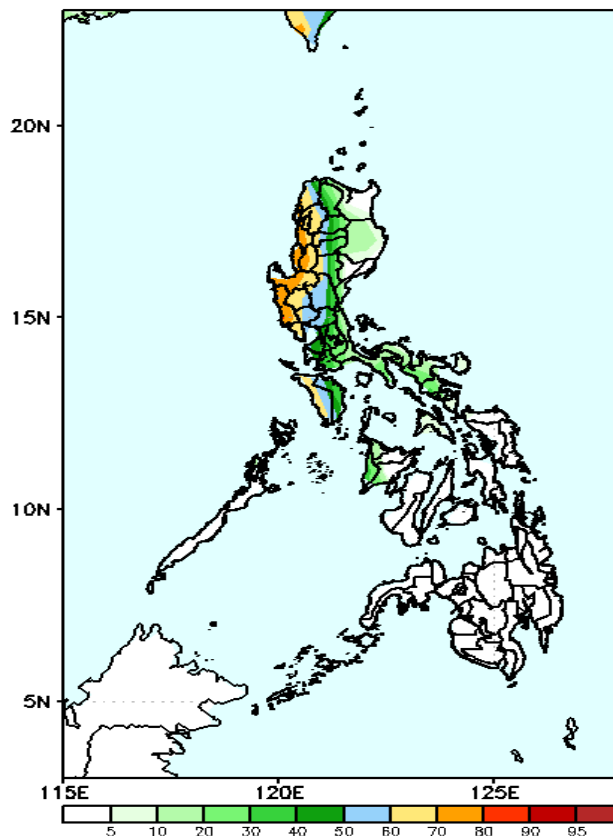
GEFS Week-2 Exceedance Prob. > 100mm
Valid: 20240726 - 20240801



Probability to Exceed 100mm

- Moderate to high over Ilocos Region, CAR, Central Luzon, NCR, Cavite, Batangas, Mindoro Provinces;
- Low to moderate over Antique and the rest of Luzon;
- Low over the rest of the country.

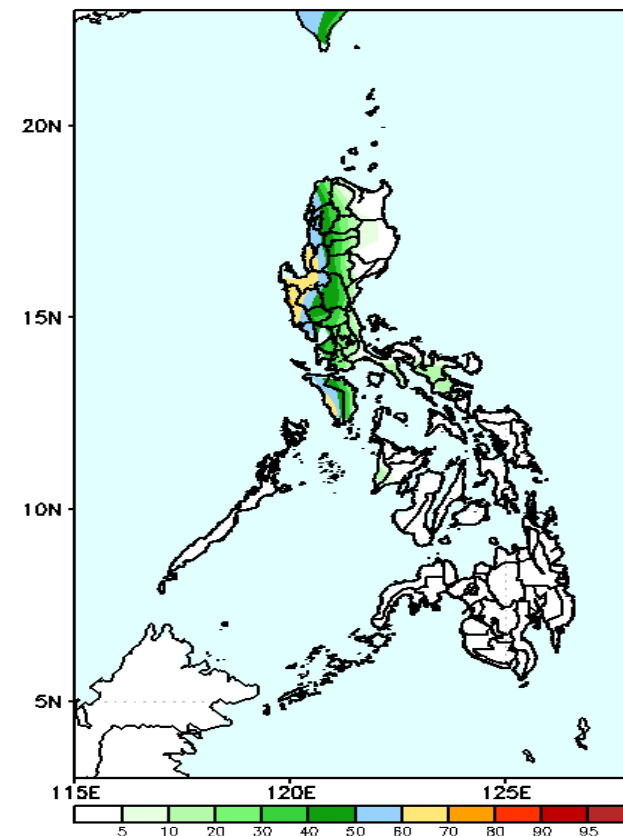
GEFS Week-2 Exceedance Prob. > 150mm
Valid: 20240726 - 20240801



Probability to Exceed 150mm

- Moderate to high over Ilocos Region, western parts of CAR and Central Luzon, NCR, Cavite, and Occidental Mindoro;
- Low to moderate over the rest of Luzon;
- Low over Visayas and Mindanao.

GEFS Week-2 Exceedance Prob. > 200mm
Valid: 20240726 - 20240801

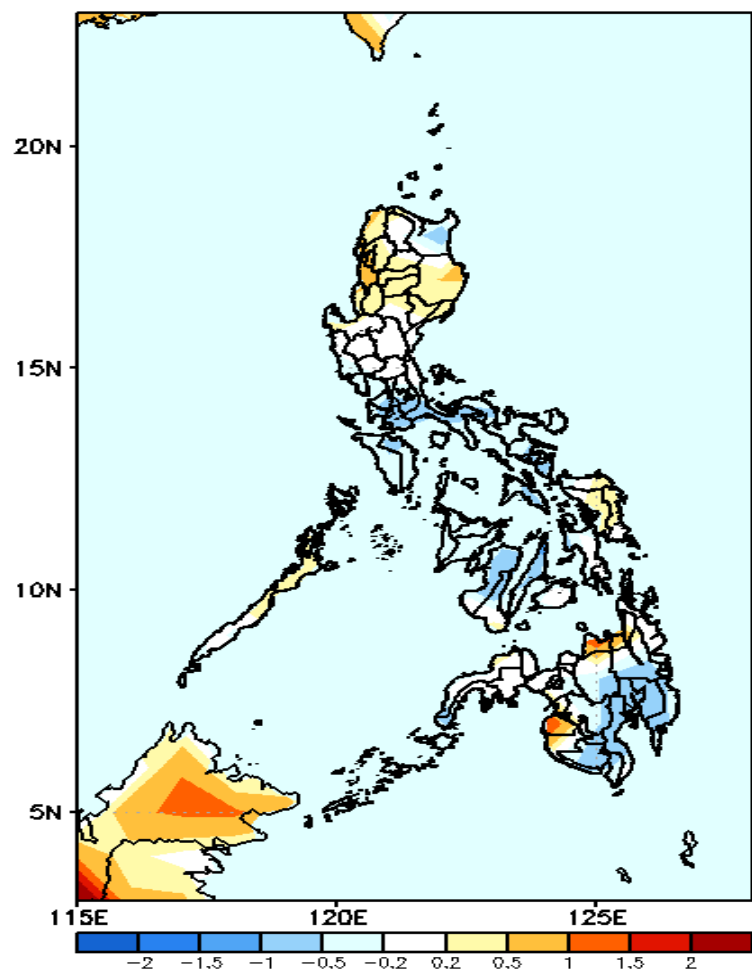


Probability to Exceed 200mm

- Moderate to high over most of Ilocos Region, Benguet, Zambales, Bataan, and Tarlac;
- Low to moderate over the rest of Luzon;
- Low over Visayas and Mindanao.

GEFS Week-1 & 2 Forecasts: T2m Anomaly

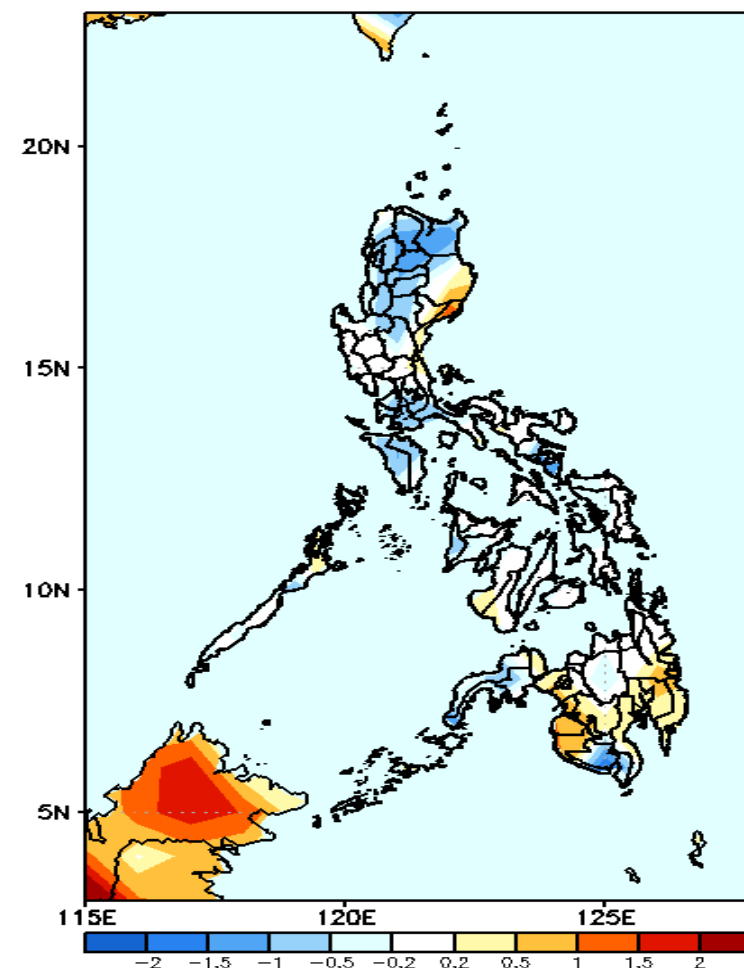
GEFS Week-1 T2m Anomaly
Valid: 20240719 - 20240725



2m Temperature Week 1: Jul 19-25, 2024

Near to slightly warmer than average surface air temperature will likely be experienced in most parts of Northern and Central Luzon, Samar provinces, Misamis Oriental, Maguindanao and Sultan Kudarat while the rest of the country will likely have near to slightly cooler than average surface air temperature.

GEFS Week-2 T2m Anomaly
Valid: 20240726 - 20240801



2m Temperature Week 2: Jul 26- Aug 01, 2024

Near to cooler surface air temperature will likely be experienced in most parts of the country except in Aurora, parts of Davao Region, Maguindanao and Sultan Kudarat where near to slightly warmer than average temperature is expected.