



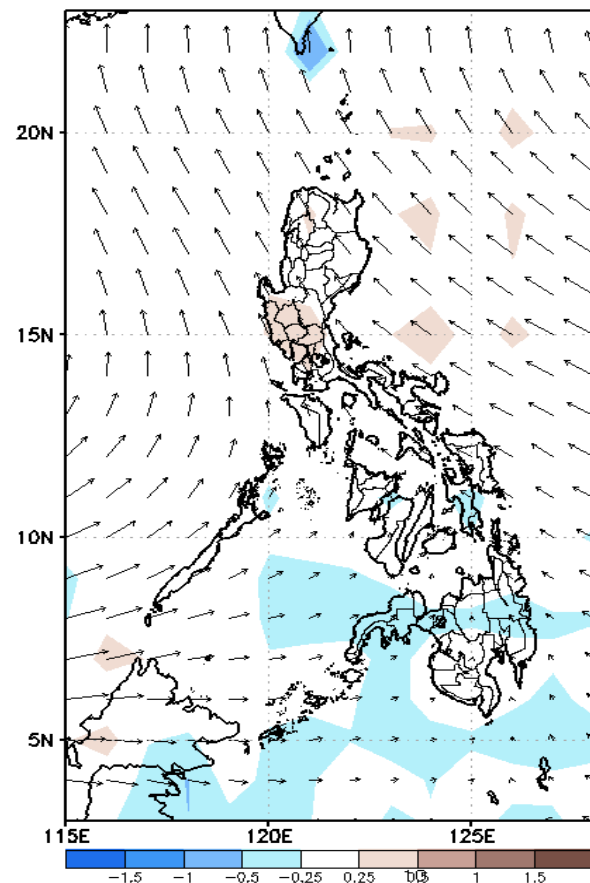
Week 1 & Week 2 Forecast for the Philippines using GEFS Model



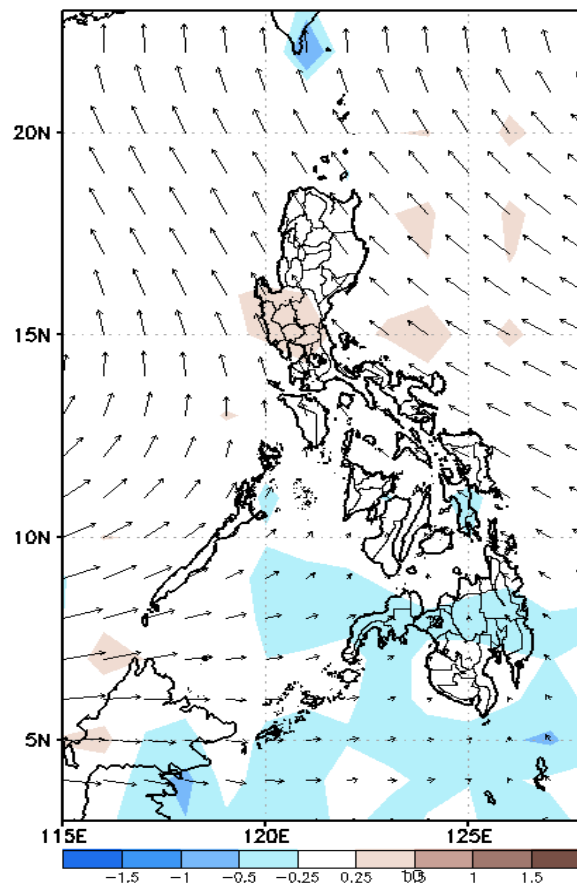
GEFS Week-1 Wind Forecasts:

Week 1: Jun 19-25, 2024

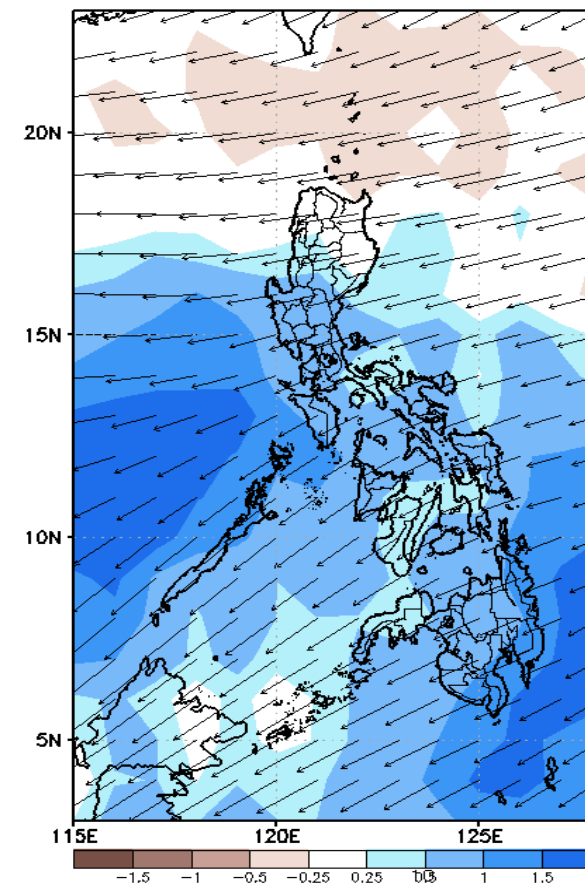
GEFS Week-1 850-hPa Divergence and Wind Anom
Valid: 20240619 - 20240625



GEFS Week-1 700-hPa Divergence and Wind Anom
Valid: 20240619 - 20240625



GEFS Week-1 200-hPa Divergence and Wind Anoma
Valid: 20240619 - 20240625



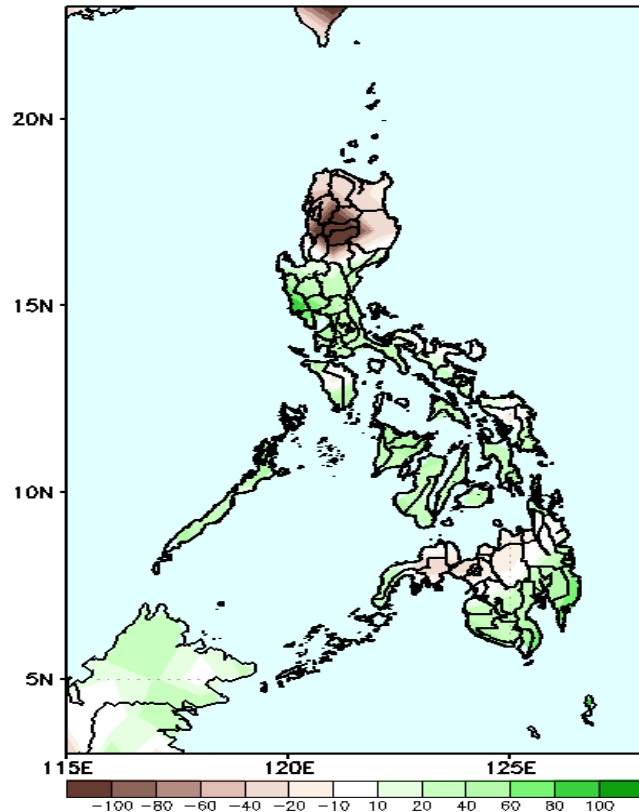
Southwest Monsoon affecting western sections of Luzon and Visayas. Easterlies affecting the rest of the country.

Precipitation Anomaly and Exceedance Probability > 25/50 mm



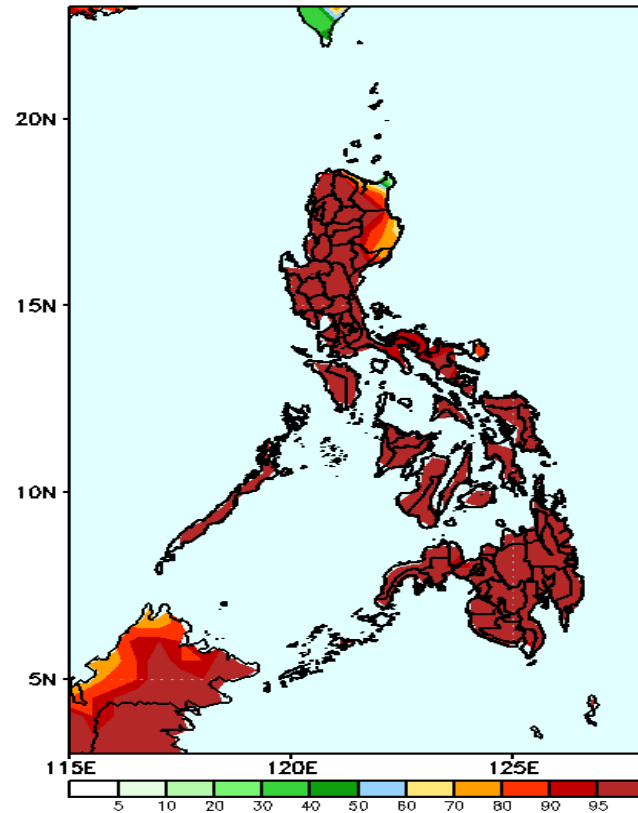
Week 1: Jun 19-25, 2024

GEFS Week-1 Precip Anomaly
Valid: 20240619 - 20240625



Rainfall deficit of more than 100mm in CAR, Ilocos Sur and La Union; 20-40mm for the rest of northern Luzon, and northern Mindanao while 40-80mm increase of rainfall for the rest of the country. .

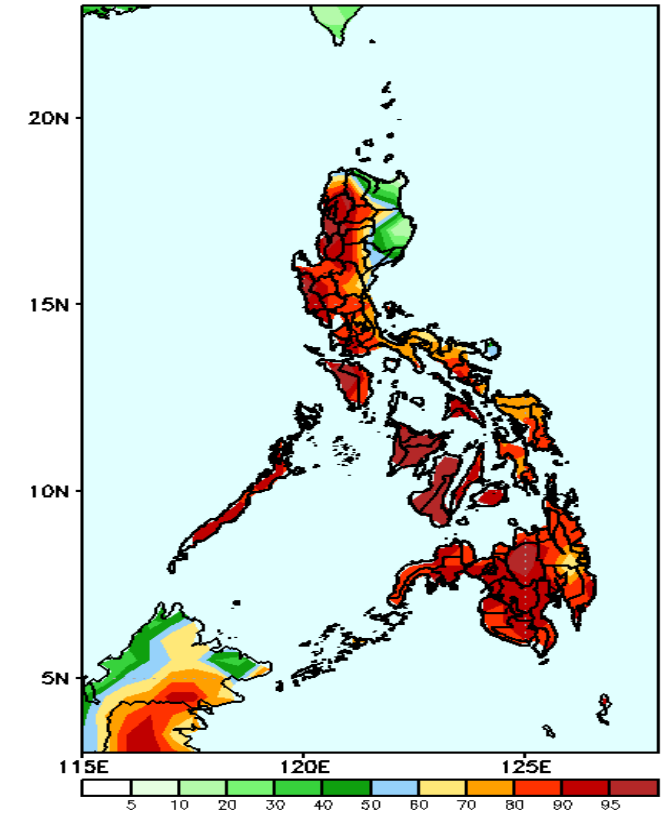
GEFS Week-1 Exceedance Prob. > 25mm
Valid: 20240619 - 20240625



Probability to Exceed 25mm

- High to very high over most of the country;
- Moderate to high over the eastern section of Cagayan Valley.

GEFS Week-1 Exceedance Prob. > 50mm
Valid: 20240619 - 20240625

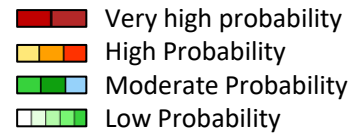


Probability to Exceed 50mm

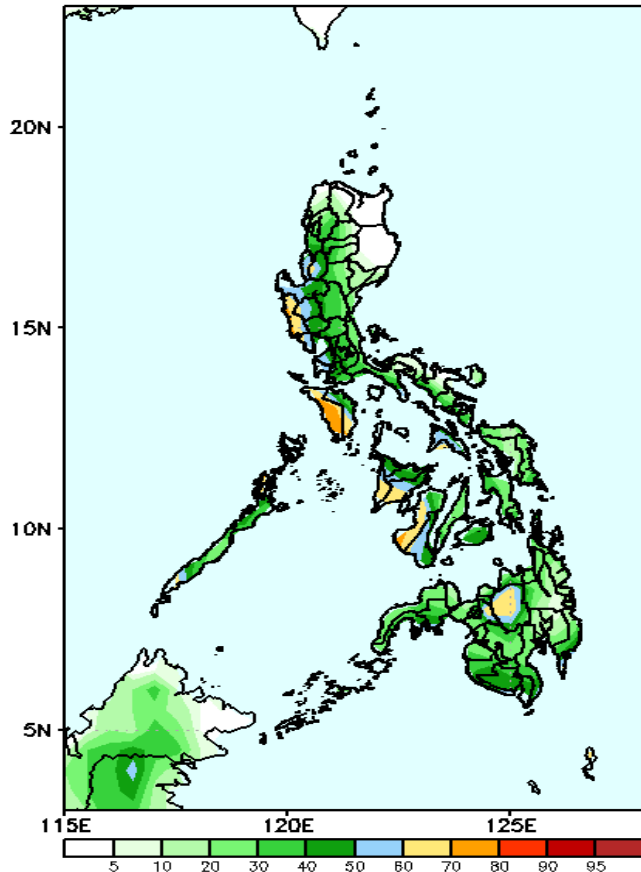
- High to very high over Mindanao, Visayas, and the western section of Luzon;
- Moderate to high over the rest of Central and Southern Luzon;
- Low to moderate over Cagayan Valley.

Exceedance Probability > 100/150/200 mm

Week 1: Jun 19-25, 2024



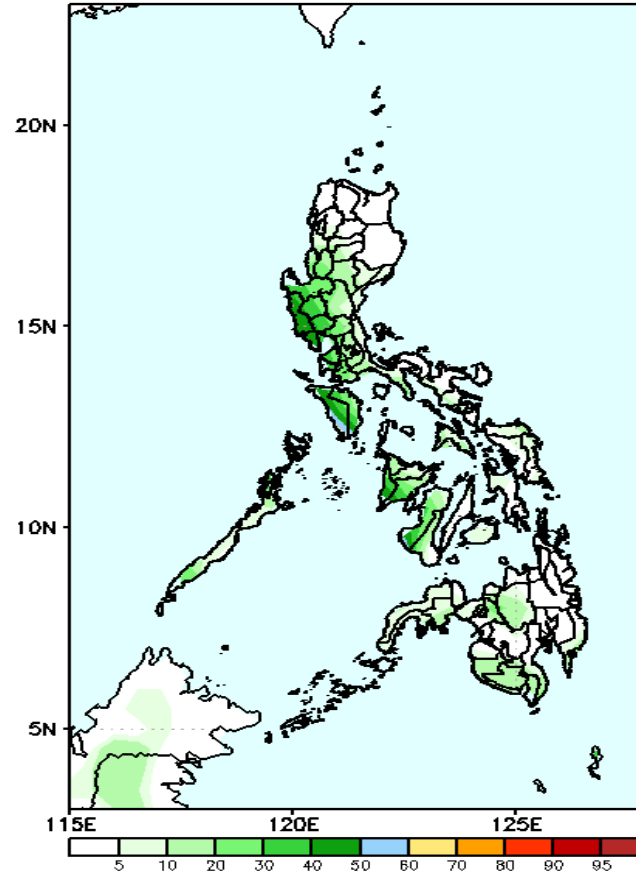
GEFS Week-1 Exceedance Prob. > 100mm
Valid: 20240619 - 20240625



Probability to Exceed 100mm

- Moderate to high over Bukidnon, Western Visayas, Occidental Mindoro, Western section of Central Luzon, La Union and Pangasinan;
- Low to moderate over the rest of the country.

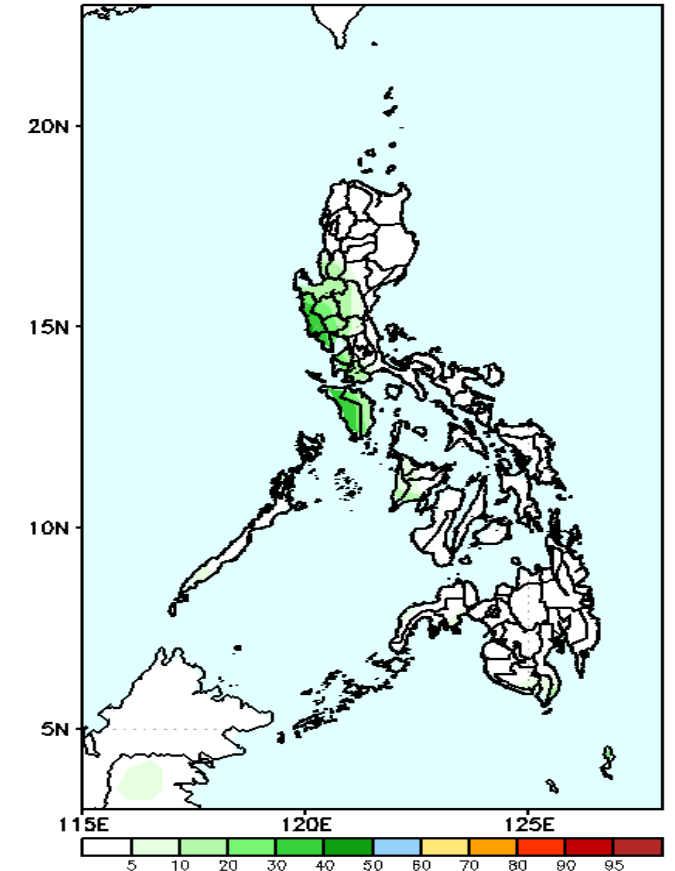
GEFS Week-1 Exceedance Prob. > 150mm
Valid: 20240619 - 20240625



Probability to Exceed 150mm

- Low to moderate over the western section of Central and Southern Luzon;
- Low over the rest of the country.

GEFS Week-1 Exceedance Prob. > 200mm
Valid: 20240619 - 20240625



Probability to Exceed 200mm

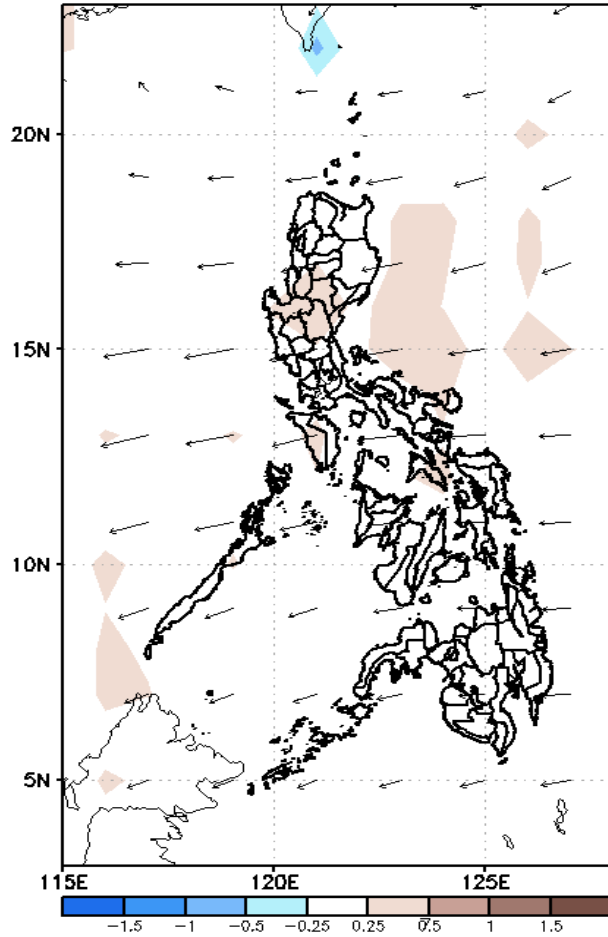
- Low across the country.



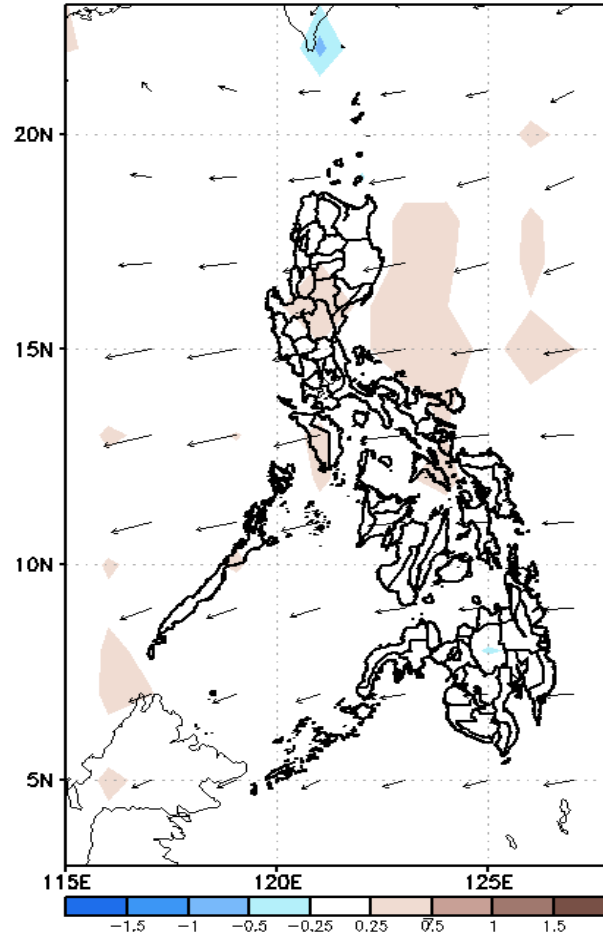
GEFS Week-2 Wind Forecasts:

Week 2: Jun 26- Jul 02, 2024

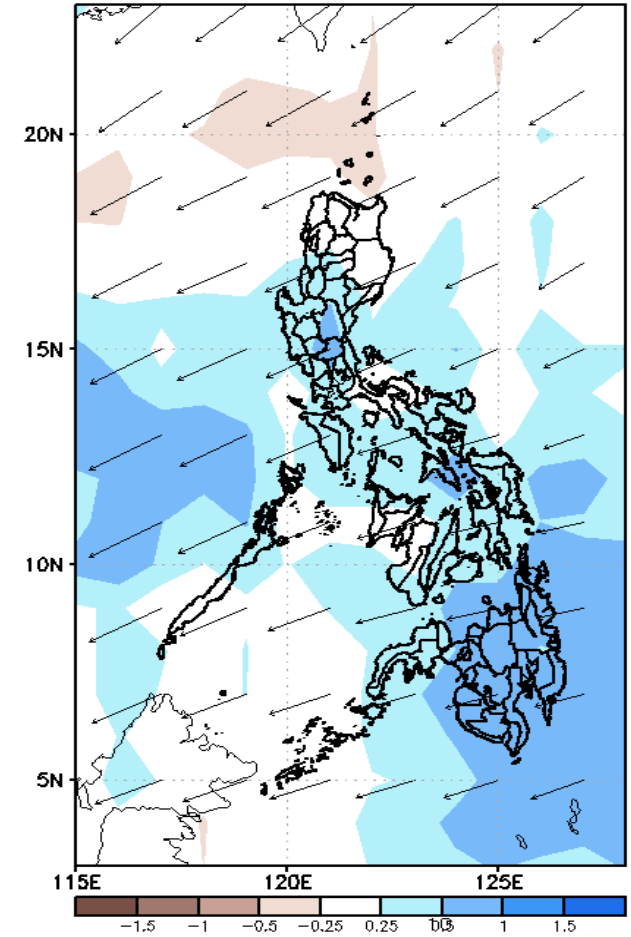
GEFS Week-2 850-hPa Divergence and Wind Anom
Valid: 20240626 - 20240702



GEFS Week-2 700-hPa Divergence and Wind Anom
Valid: 20240626 - 20240702

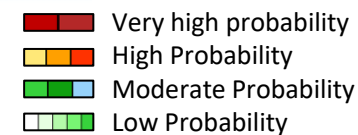


GEFS week-2 200-hPa Divergence and Wind Anom
Valid: 20240626 - 20240702



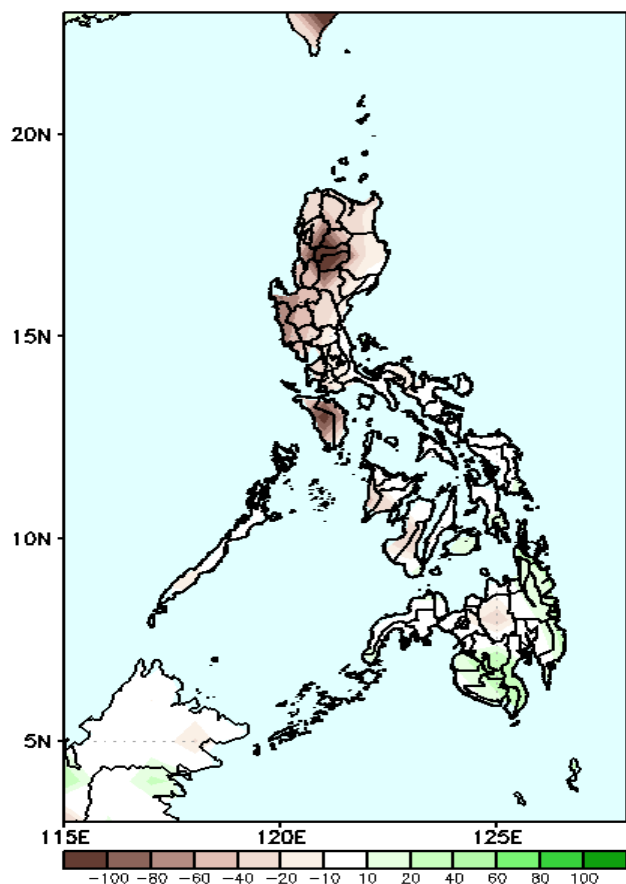
Easterlies affecting most parts of the country .

Precipitation Anomaly and Exceedance Probability > 25/50 mm



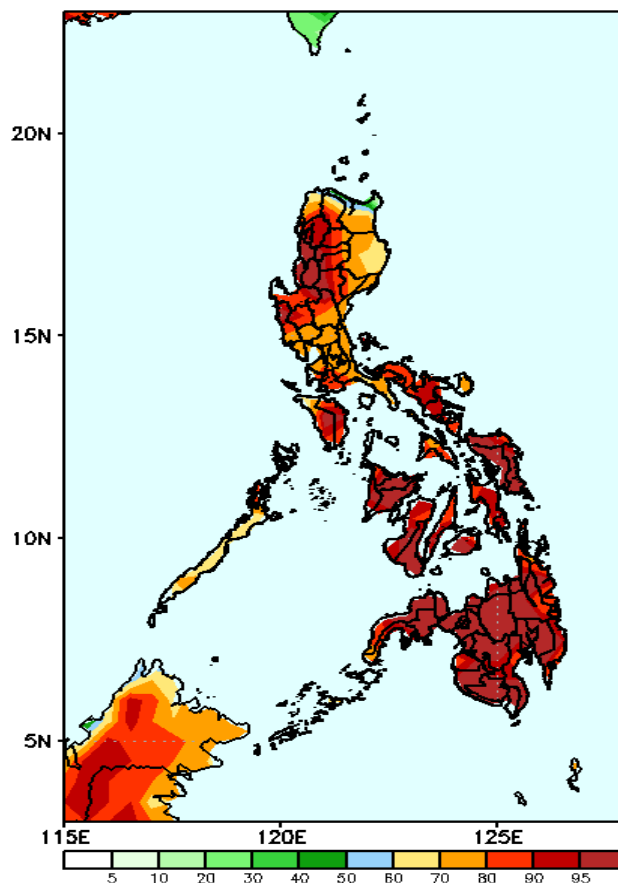
Week 2: Jun 26- Jul 02, 2024

GEFS Week-2 Precip Anomaly
Valid: 20240626 - 20240702



Rainfall deficit of more than 100mm in CAR; 20-90mm for the rest of the country except in southwestern Mindanao and Caraga region where 20-40mm increase of rainfall is expected.

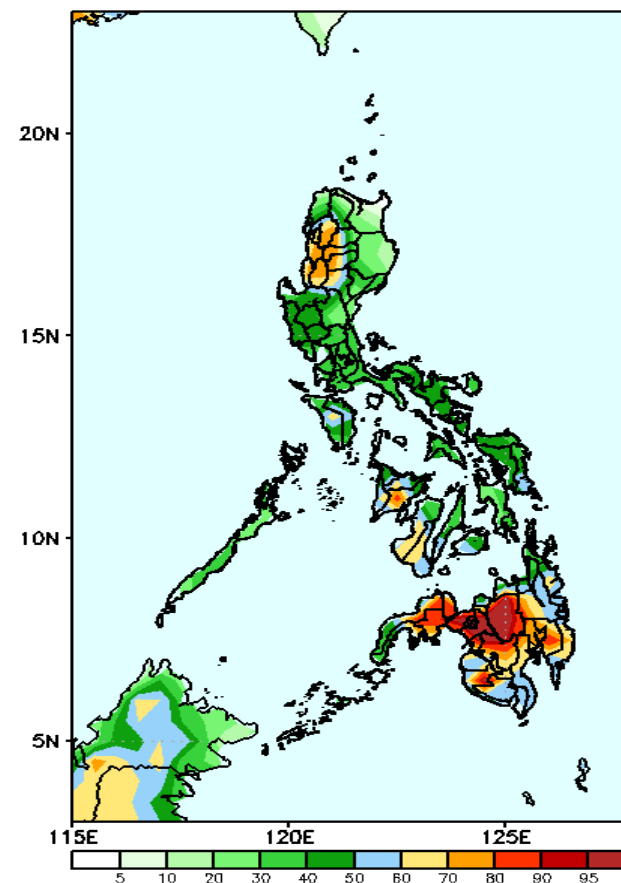
GEFS Week-2 Exceedance Prob. > 25mm
Valid: 20240626 - 20240702



Probability to Exceed 25mm

- High to very high over most parts of the country;
- Moderate to high over the northernmost of Cagayan.

GEFS Week-2 Exceedance Prob. > 50mm
Valid: 20240626 - 20240702



Probability to Exceed 50mm

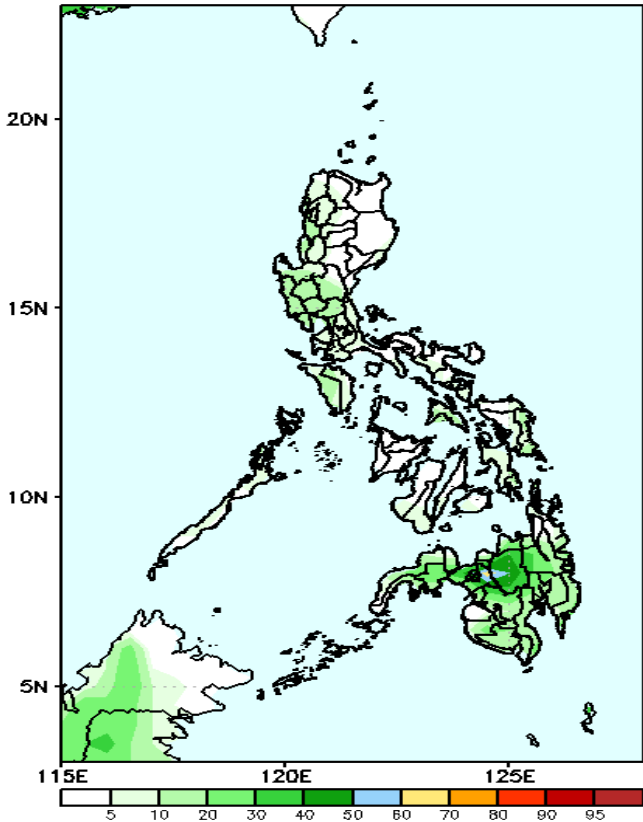
- High to very high over Bukidnon, Lanao provinces and Zamboanga del Sur;
- Moderate to high over Visayas, the rest of Mindanao, and most of Luzon;
- Low to moderate over Cagayan Valley.

Exceedance Probability > 100/150/200 mm

Week 2: Jun 26- Jul 02, 2024

- Very high probability
- High Probability
- Moderate Probability
- Low Probability

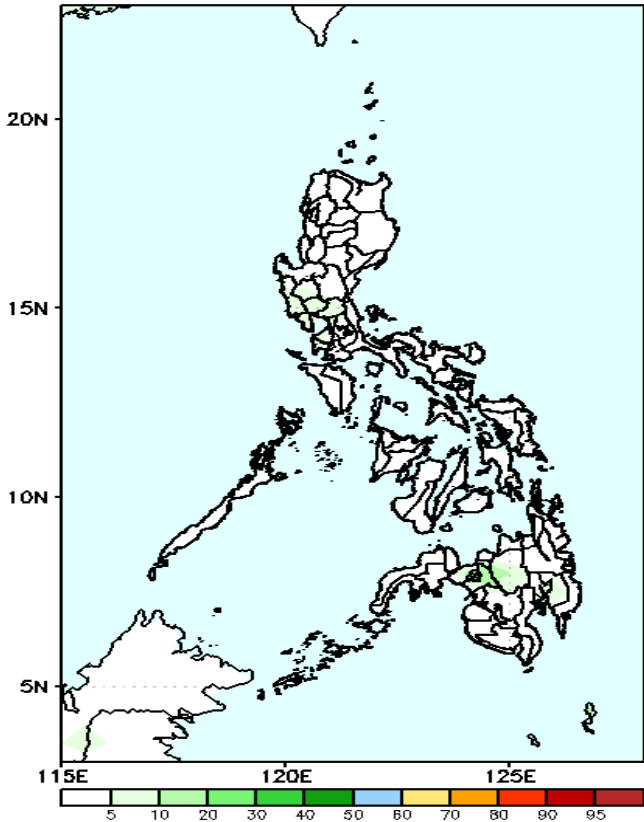
GEFS Week-2 Exceedance Prob. > 100mm
Valid: 20240626 – 20240702



Probability to Exceed 100mm

- Low to moderate over Bukidnon and Lanao Provinces;
- Low over the rest of the country.

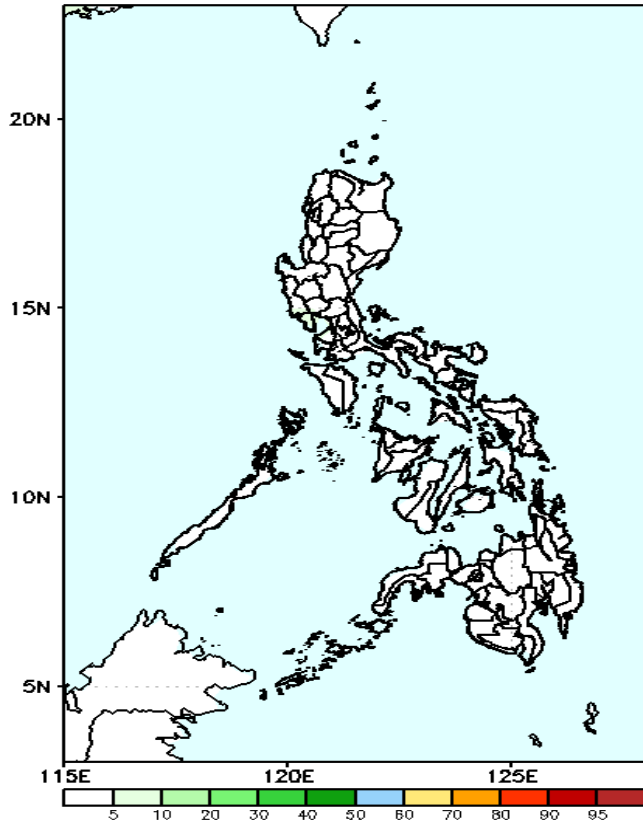
GEFS Week-2 Exceedance Prob. > 150mm
Valid: 20240626 – 20240702



Probability to Exceed 150mm

- Low across the country.

GEFS Week-2 Exceedance Prob. > 200mm
Valid: 20240626 – 20240702

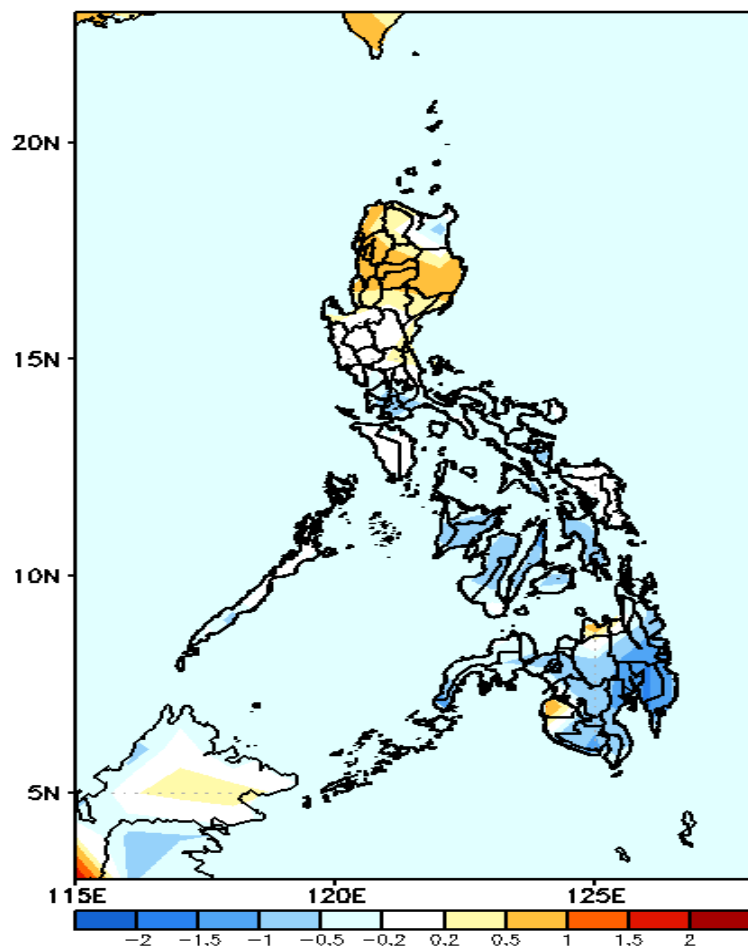


Probability to Exceed 200mm

- Low across the country.

GEFS Week-1 & 2 Forecasts: T2m Anomaly

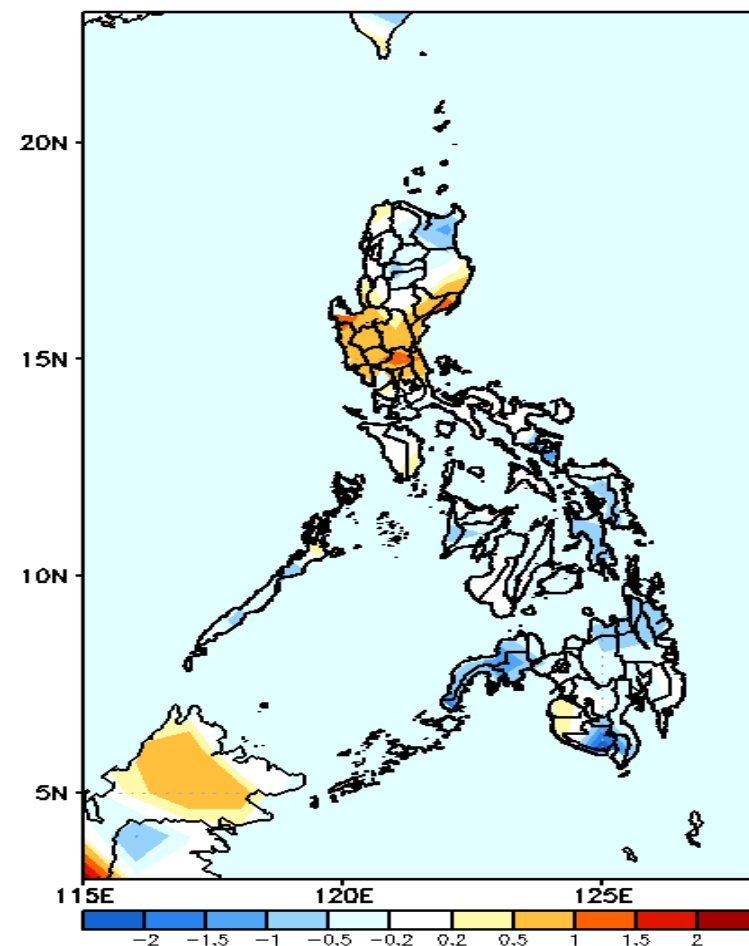
GEFS Week-1 T2m Anomaly
Valid: 20240619 – 20240625



2m Temperature Week 1: Jun 19-25, 2024

Near to slightly warmer than average surface air temperature will likely be experienced in most parts of Luzon, Maguindanao, and Misamis Oriental while slightly cooler to cooler than average temperature is expected for the rest of the country.

GEFS Week-2 T2m Anomaly
Valid: 20240626 – 20240702



2m Temperature Week 2: Jun 26- Jul 02, 2024

Near to cooler surface air temperature will likely be experienced in most parts of the country except in central Luzon and some areas in eastern Luzon where slightly warmer to warmer than average temperature is expected.