



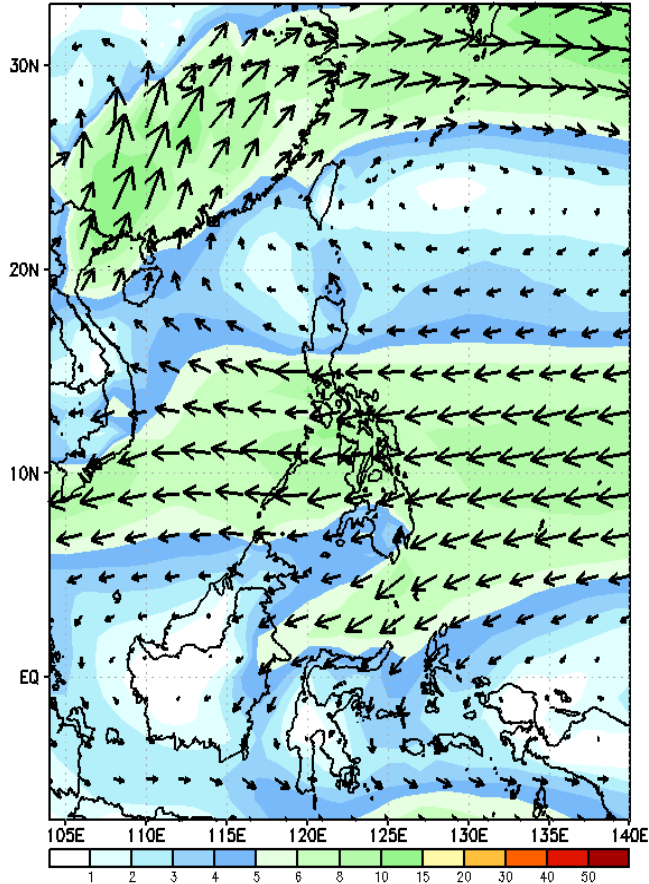
Week 1 & Week 2 Forecast for the Philippines using GEFS Model



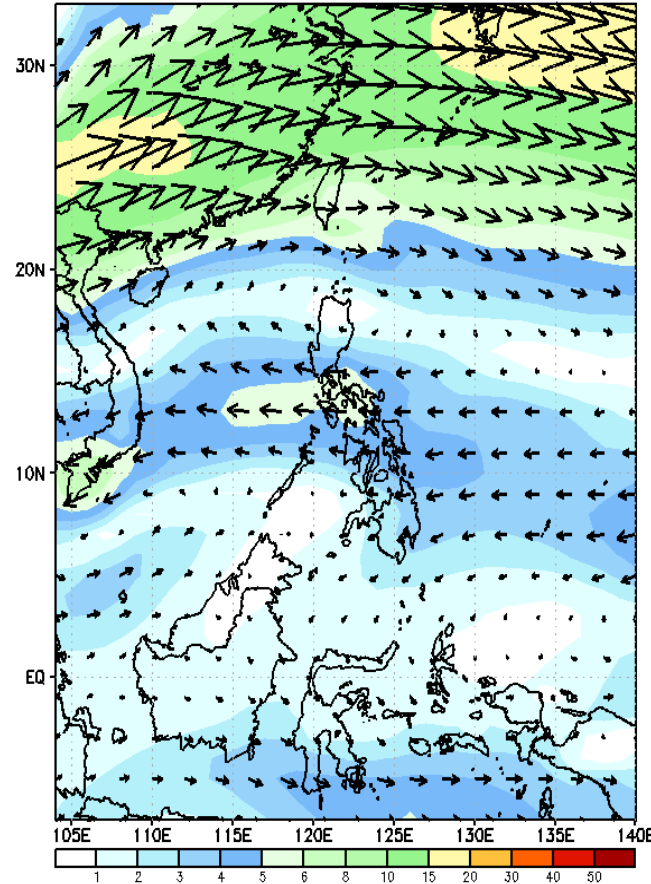
GEFS Week-1 Forecasts: Wind Forecast

Week 1: Mar 20-26, 2024

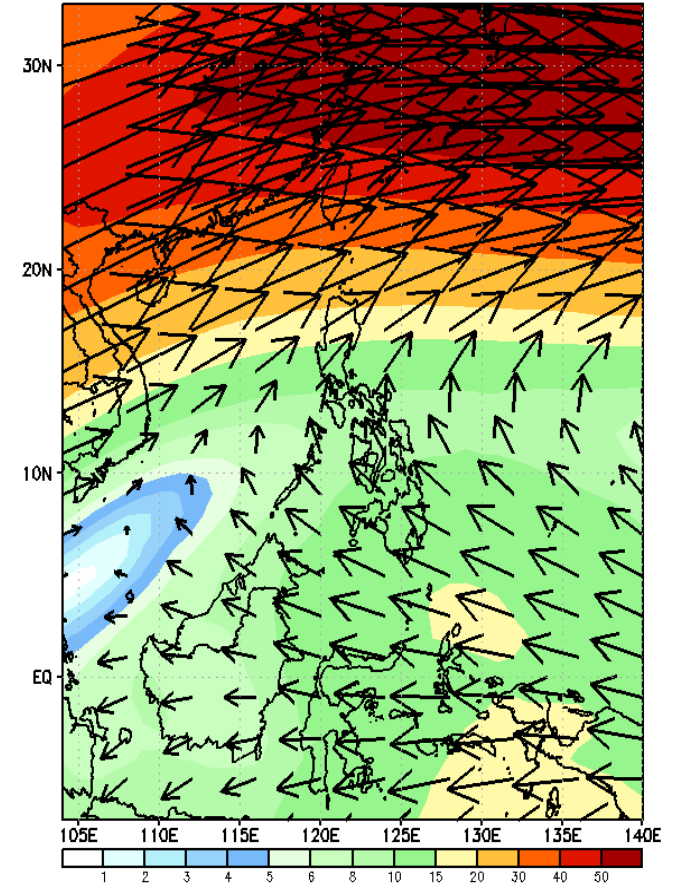
GEFS Week-1 850-hPa Wind Total
Valid: 20240320 - 20240326



GEFS Week-1 700-hPa Wind Total
Valid: 20240320 - 20240326



GEFS Week-1 200-hPa Wind Total
Valid: 20240320 - 20240326



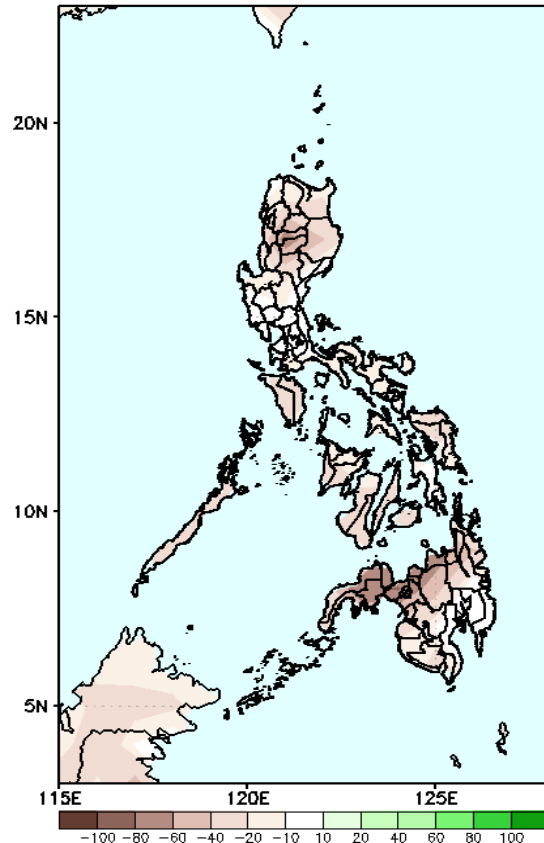
Easterlies will likely affect most parts of the country.

Precipitation Anomaly and Exceedance Probability > 25/50 mm



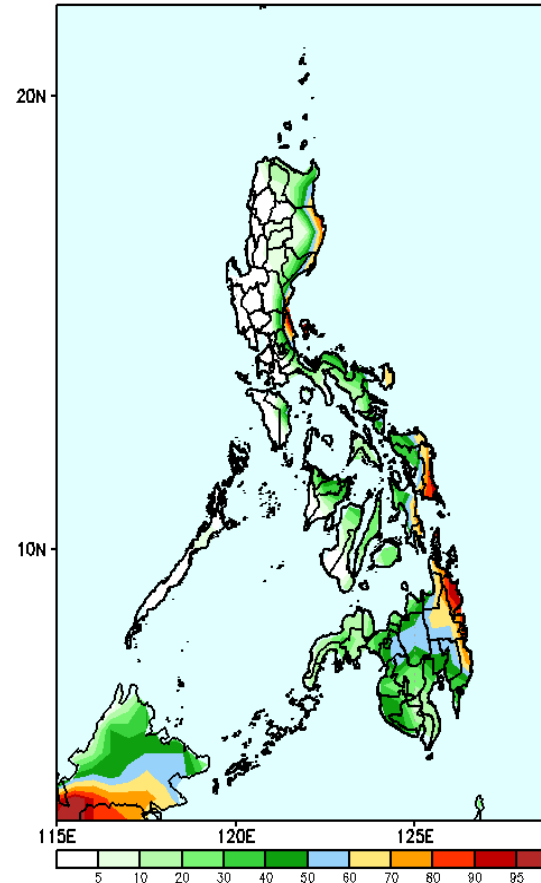
Week 1: Mar 20-26, 2024

GEFS Week-1 Precip Anomaly
Valid: 20240320 - 20240326



Rainfall deficit of 40-80mm over most parts of the country.

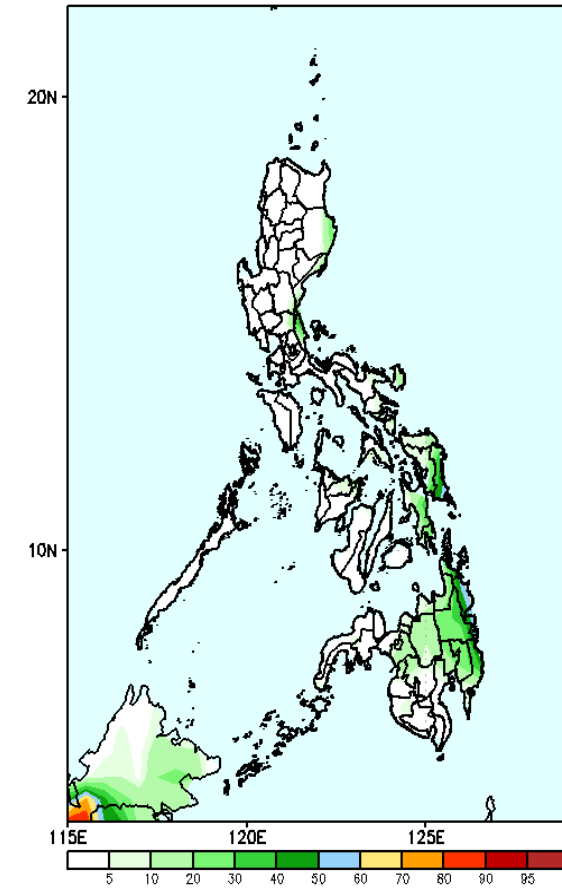
GEFS Week-1 Exceedance Prob. > 25mm
Valid: 20240320 - 20240326



Probability to Exceed 25mm

- Moderate to high over the eastern portions of Cagayan and Isabela, Aurora, northern Quezon, Catanduanes, Eastern Visayas and Eastern Mindanao;
- Low to moderate over the rest of the eastern sections of Luzon;
- Low over the rest of the country.

GEFS Week-1 Exceedance Prob. > 50mm
Valid: 20240320 - 20240326



Probability to Exceed 50mm

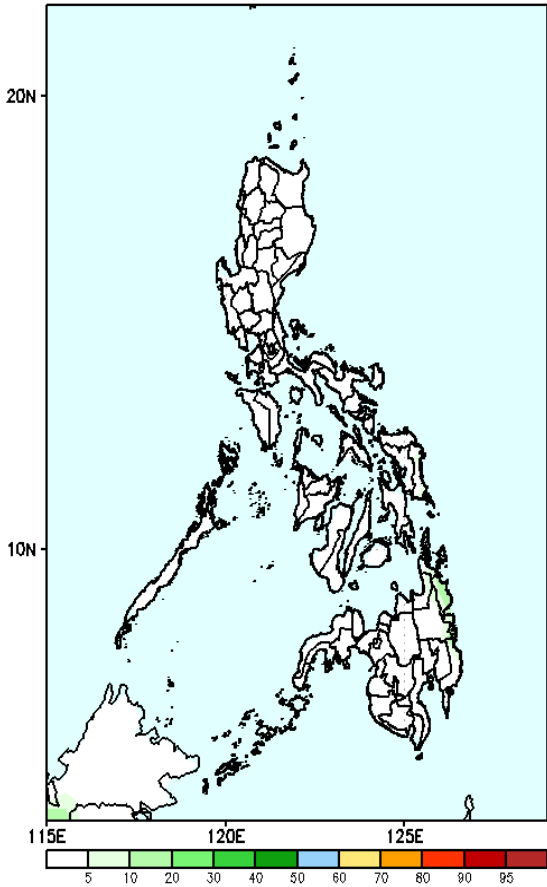
- Low to moderate over Eastern Samar and Surigao del Sur;
- Low over the rest of the country.

Exceedance Probability > 100/150/200 mm

Week 1: Mar 20-26, 2024

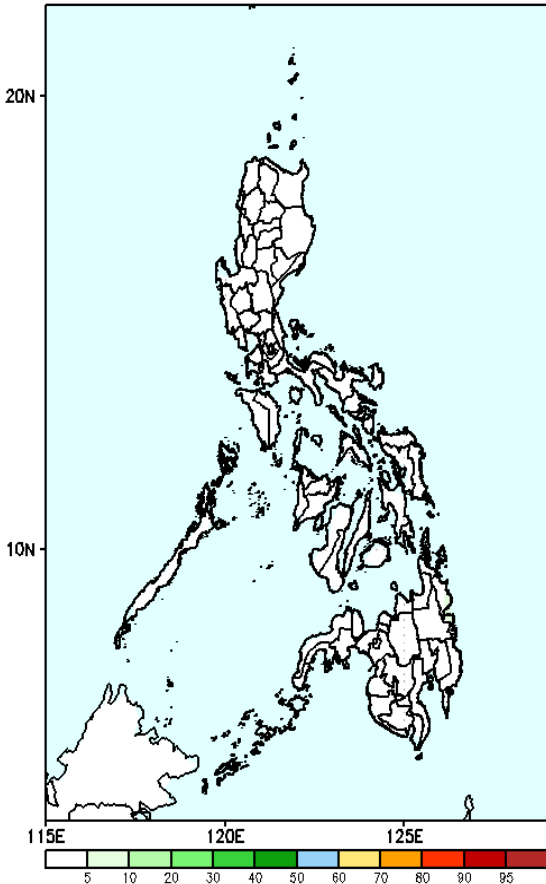
- Very high probability
- High Probability
- Moderate Probability
- Low Probability

GEFS Week-1 Exceedance Prob. > 100mm
Valid: 20240320 - 20240326



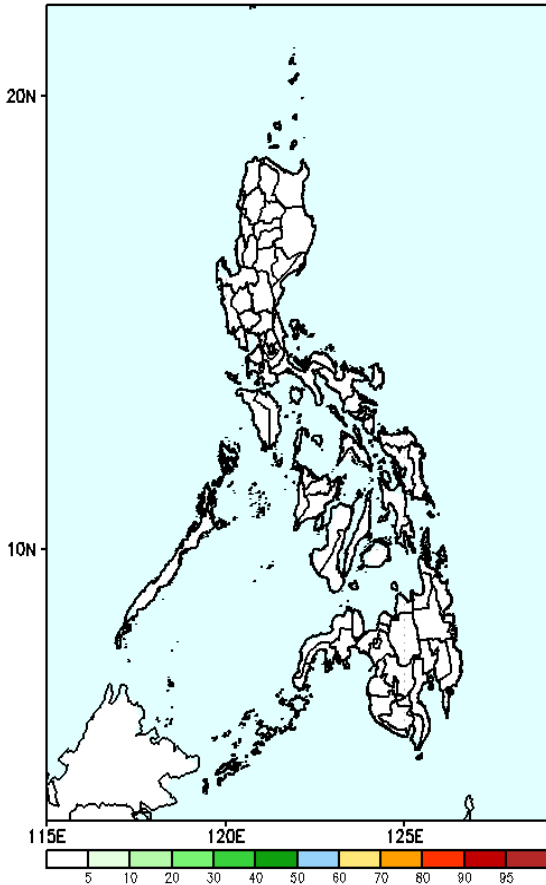
Probability to Exceed 100mm
• Low across the country.

GEFS Week-1 Exceedance Prob. > 150mm
Valid: 20240320 - 20240326



Probability to Exceed 150mm
• Low across the country.

GEFS Week-1 Exceedance Prob. > 200mm
Valid: 20240320 - 20240326

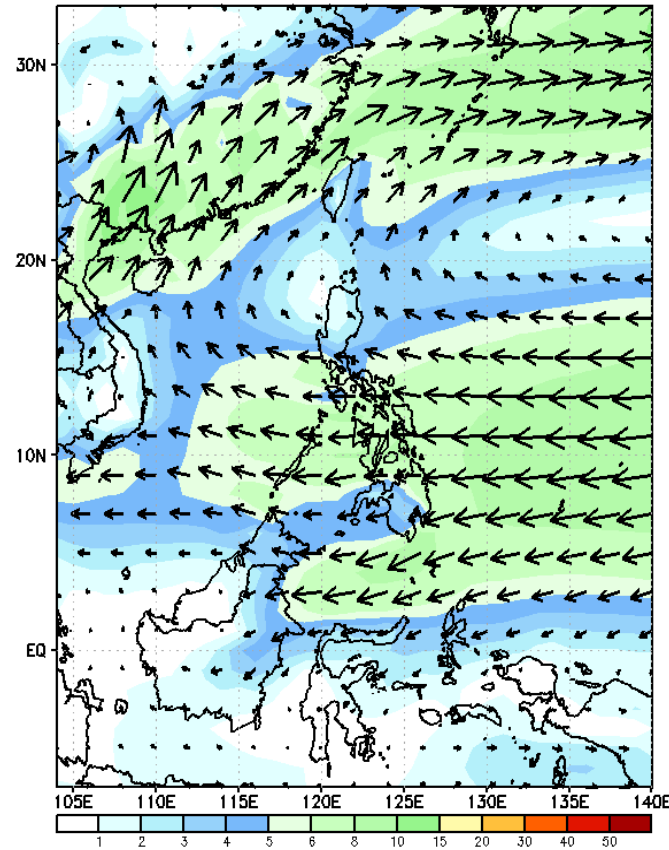


Probability to Exceed 200mm
• Low across the country.

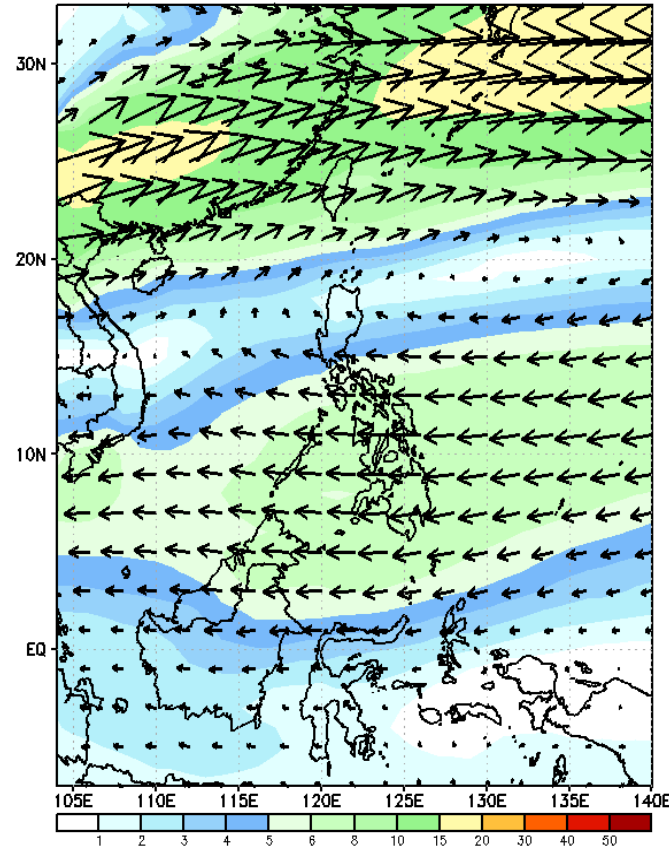
GEFS Week-2 Forecasts: Wind Forecast

Week 2: Mar 27 – April 2, 2024

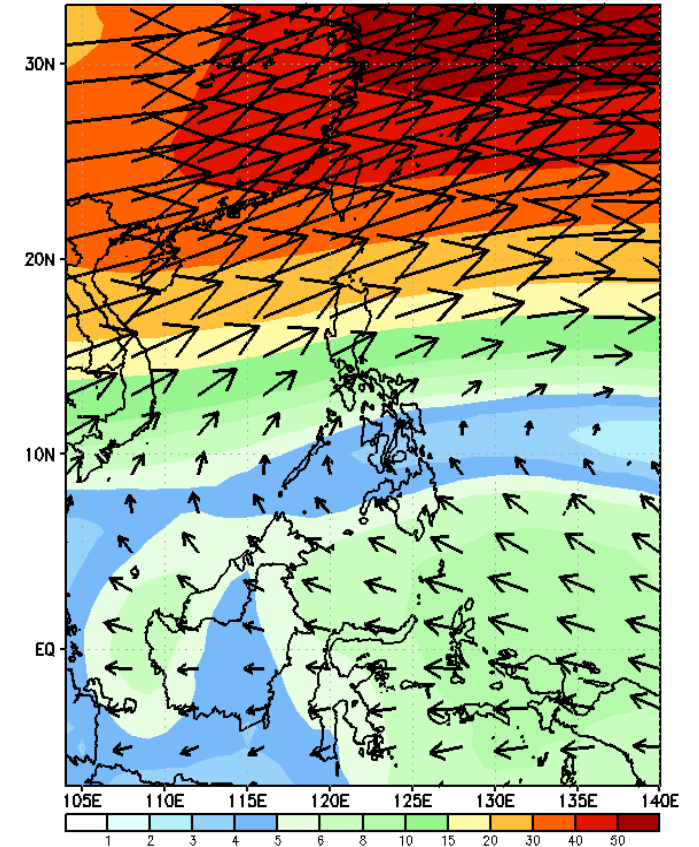
GEFS Week-2 850-hPa Wind Total
Valid: 20240327 – 20240402



GEFS Week-2 700-hPa Wind Total
Valid: 20240327 – 20240402

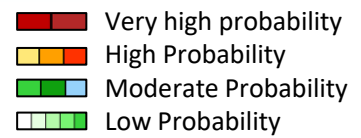


GEFS Week-2 200-hPa Wind Total
Valid: 20240327 – 20240402



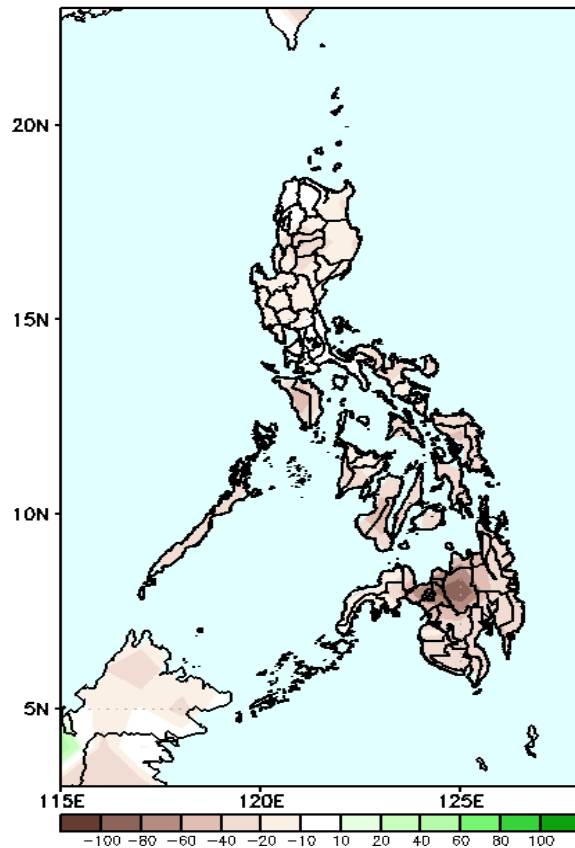
Easterlies will likely affect most parts of the country.

Precipitation Anomaly and Exceedance Probability > 25/50 mm



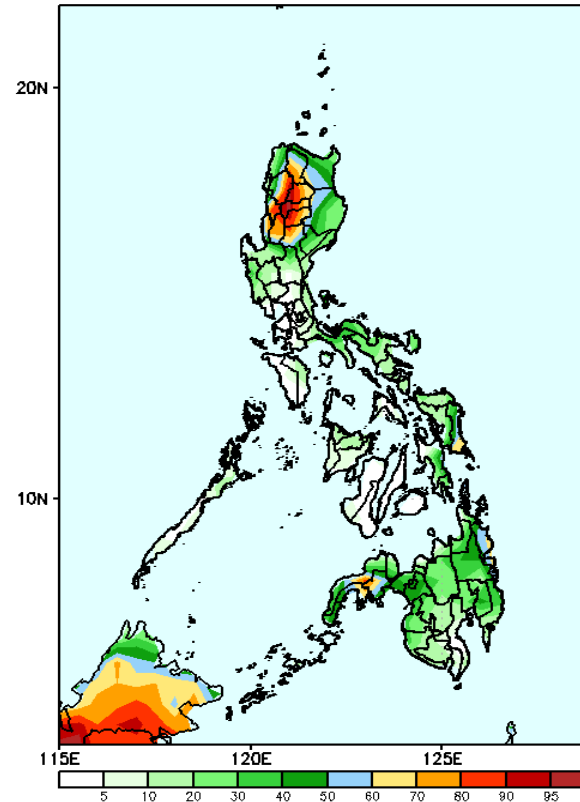
Week 2: Mar 27 – April 2, 2024

GEFS Week-2 Precip Anomaly
Valid: 20240327 – 20240402



Rainfall deficit of 40-80mm over most parts of the country.

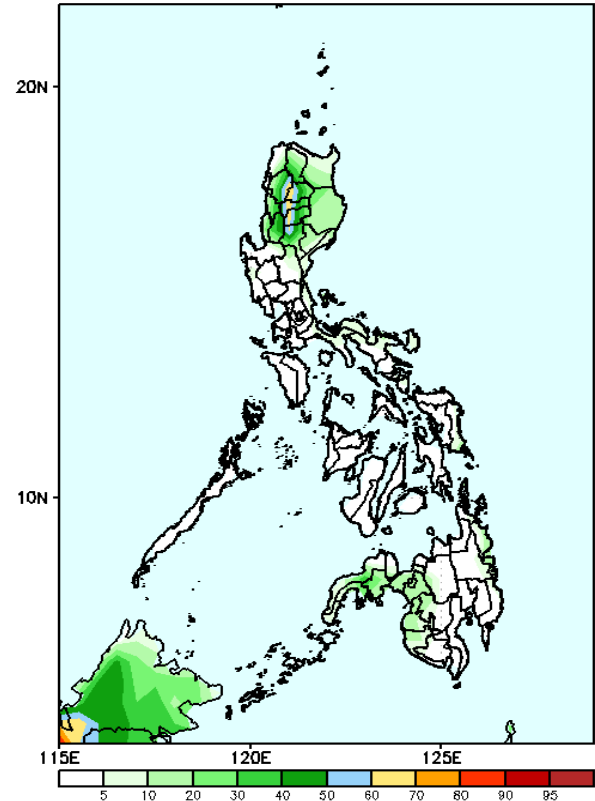
GEFS Week-2 Exceedance Prob. > 25mm
Valid: 20240327 – 20240402



Probability to Exceed 25mm

- Moderate to high over most parts of CAR, La Union, Nueva Vizcaya, Eastern Samar, Surigao del Sur and portions of Zamboanga Peninsula;
- Low to moderate over the rest of Luzon, Eastern Visayas and most parts of Mindanao;
- Low over the rest of the country.

GEFS Week-2 Exceedance Prob. > 50mm
Valid: 20240327 – 20240402



Probability to Exceed 50mm

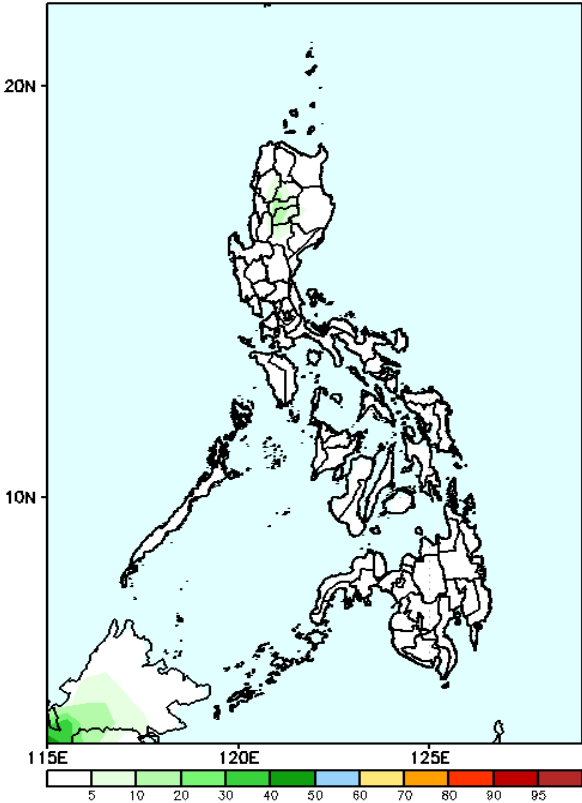
- Low across the country.

Exceedance Probability > 100/150/200 mm

Week 2: Mar 27 – April 2, 2024

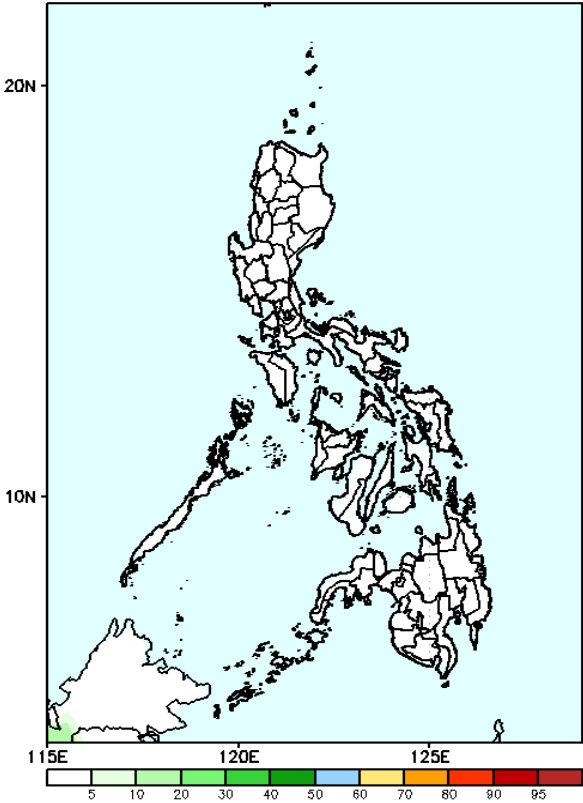
- Very high probability
- High Probability
- Moderate Probability
- Low Probability

GEFS Week-2 Exceedance Prob. > 100mm
Valid: 20240327 – 20240402



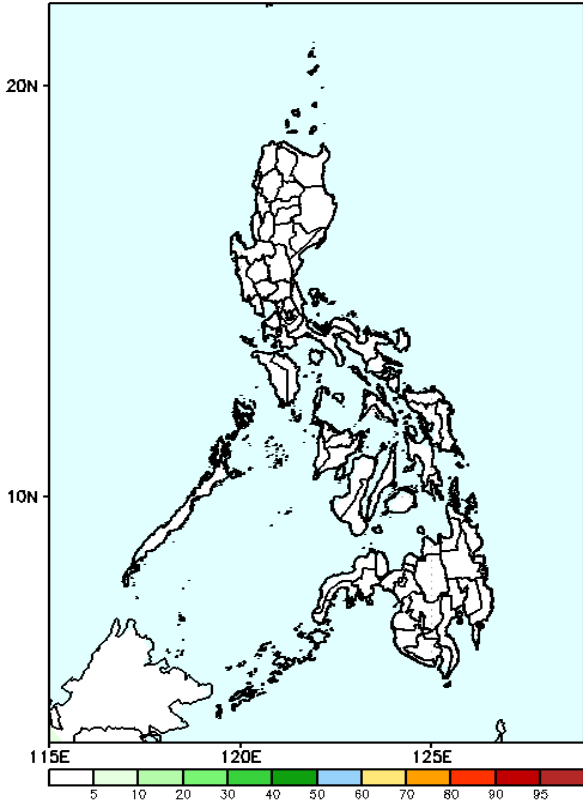
Probability to Exceed 100mm
• Low across the country.

GEFS Week-2 Exceedance Prob. > 150mm
Valid: 20240327 – 20240402



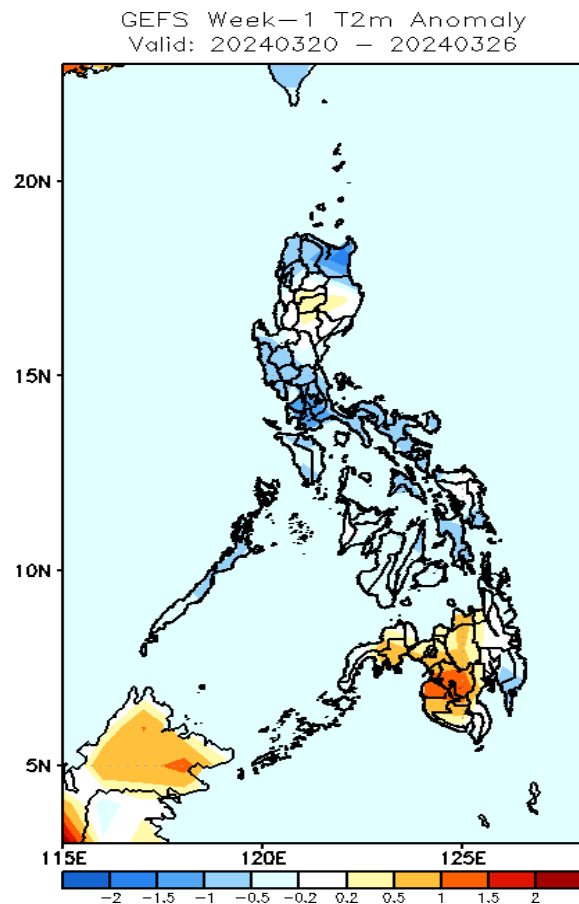
Probability to Exceed 150mm
• Low across the country.

GEFS Week-2 Exceedance Prob. > 200mm
Valid: 20240327 – 20240402



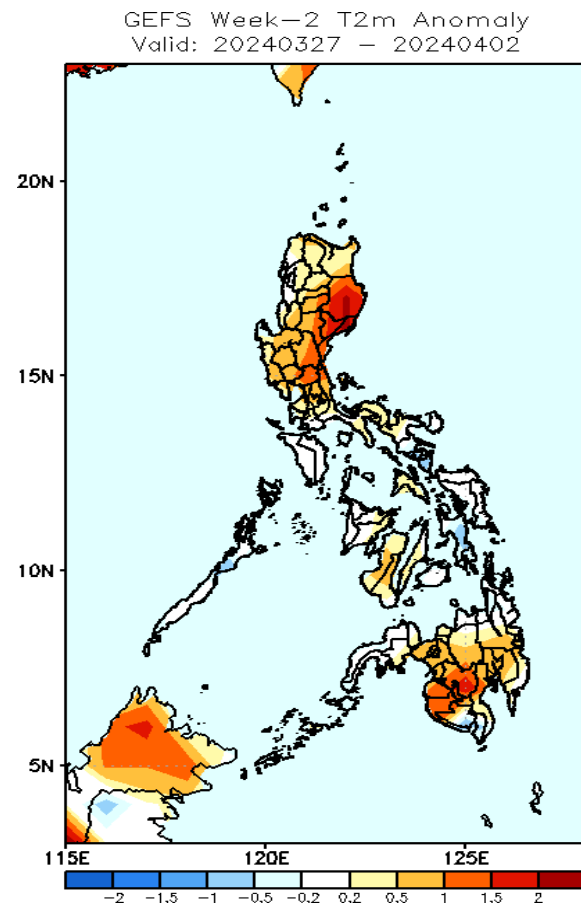
Probability to Exceed 200mm
• Low across the country.

GEFS Week-1 & 2 Forecasts: T2m Anomaly



2m Temperature Week 1: Mar 18-24, 2024

Average to cooler than average surface air temperature will likely be experienced in most parts of Luzon, Visayas and Eastern Mindanao while slightly warmer to warmer than average surface air temperature is expected over the rest of Mindanao.



2m Temperature Week 2: Mar 25-31, 2024

Near to warmer than average surface air temperature will likely be experienced in most parts of the country except Palawan, Albay, Sorsogon and Eastern Visayas where slightly cooler than average surface air temperature is expected.