



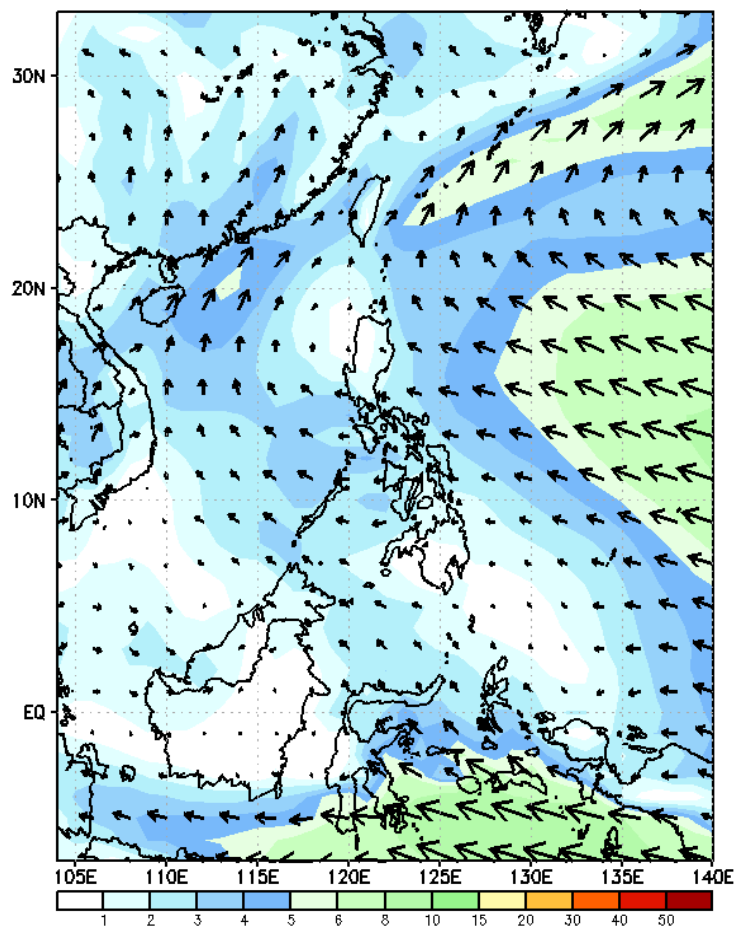
Week 1 & Week 2 Forecast for the Philippines using GEFS Model



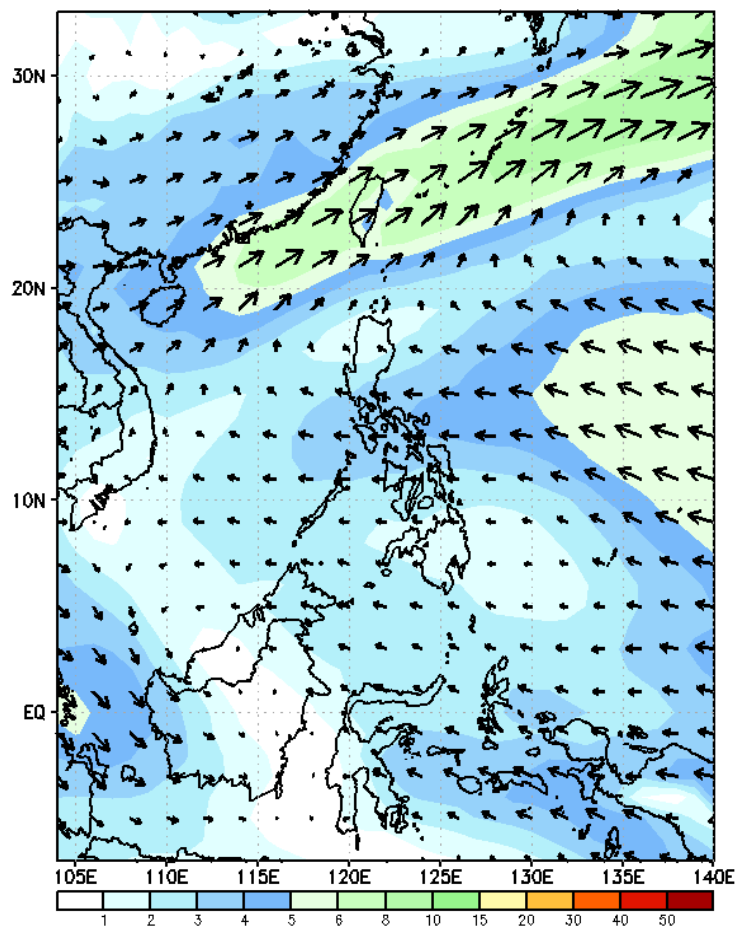
GEFS Week-1 Wind Forecasts:

Week 1: May 20-26, 2024

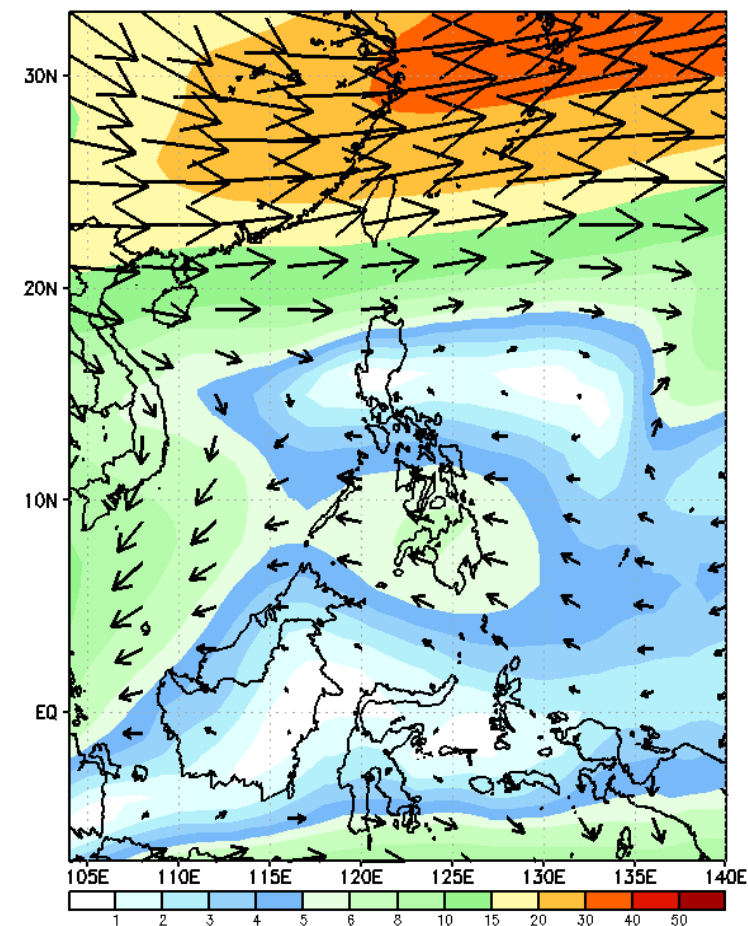
GEFS Week-1 850-hPa Wind Total
Valid: 20240520 - 20240526



GEFS Week-1 700-hPa Wind Total
Valid: 20240520 - 20240526

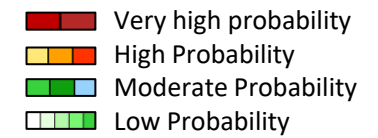


GEFS Week-1 200-hPa Wind Total
Valid: 20240520 - 20240526



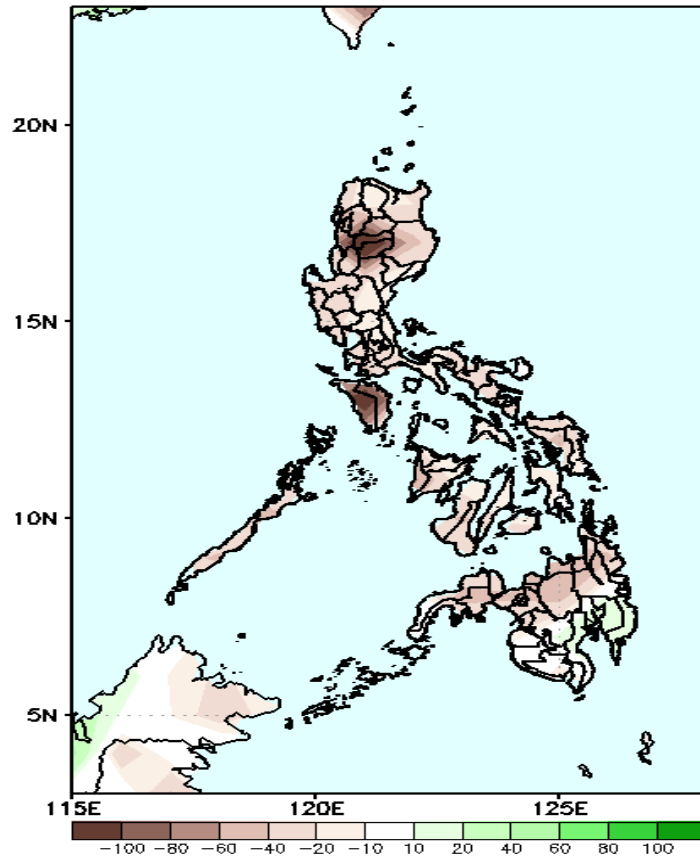
Easterlies continuously affect most parts of the country. Expect dry and warm days during the forecast period.

Precipitation Anomaly and Exceedance Probability > 25/50 mm



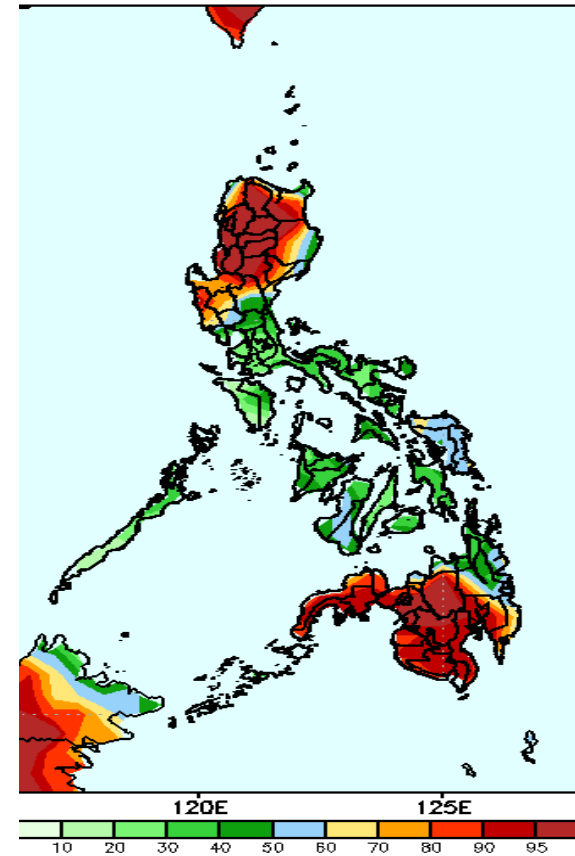
Week 1: May 20-26, 2024

GEFS Week-1 Precip Anomaly
Valid: 20240520 - 20240526



Rainfall deficit of up to 100mm is expected in most parts of CAR and Mindoro; 10-60mm for the rest of the country.

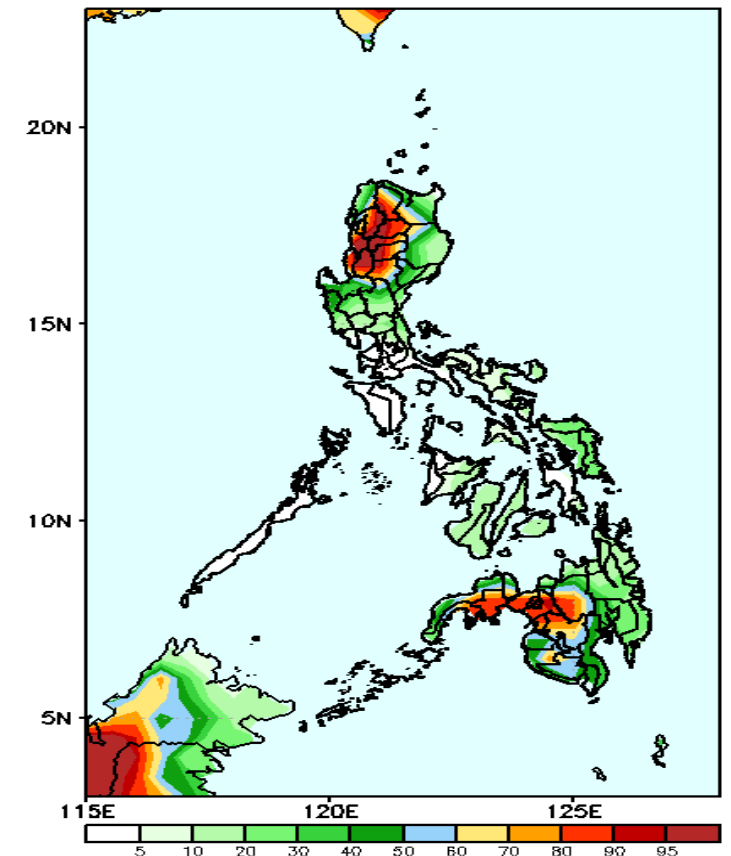
GEFS Week-1 Exceedance Prob. > 25mm
Valid: 20240520 - 20240526



Probability to Exceed 25mm

- High to very high over CAR, western Mindanao and Bukidnon;
- Moderate to high over the rest of northern and central Luzon, Samar provinces and the rest of Mindanao;
- Low to moderate over the rest of the country.

GEFS Week-1 Exceedance Prob. > 50mm
Valid: 20240520 - 20240526

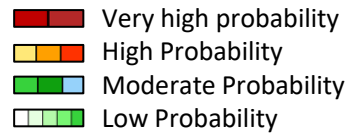


Probability to Exceed 50mm

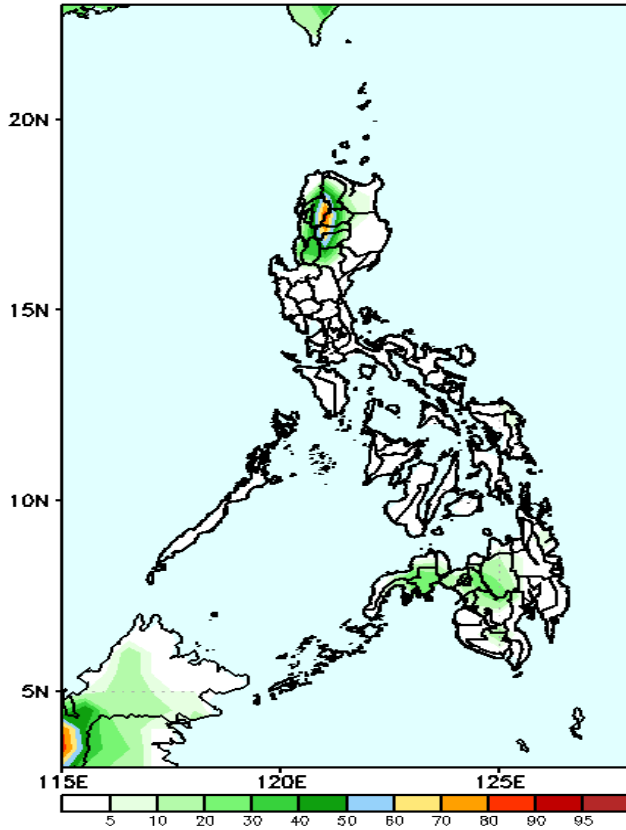
- Moderate to high over CAR, La Union, Nueva Vizcaya, western portions of Isabela and Cagayan and western Mindanao;
- Low to moderate over the rest of Luzon and Mindanao;
- Low over the Visayas.

Exceedance Probability > 100/150/200 mm

Week 1: May 20-26, 2024



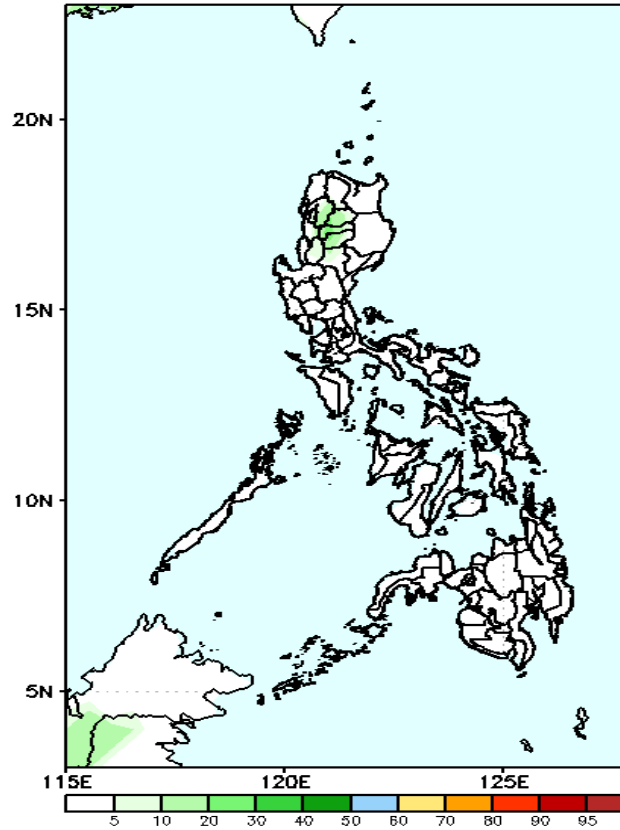
GEFS Week-1 Exceedance Prob. > 100mm
Valid: 20240520 - 20240526



Probability to Exceed 100mm

- Moderate to high over some areas in CAR;
- Low over the rest of the country.

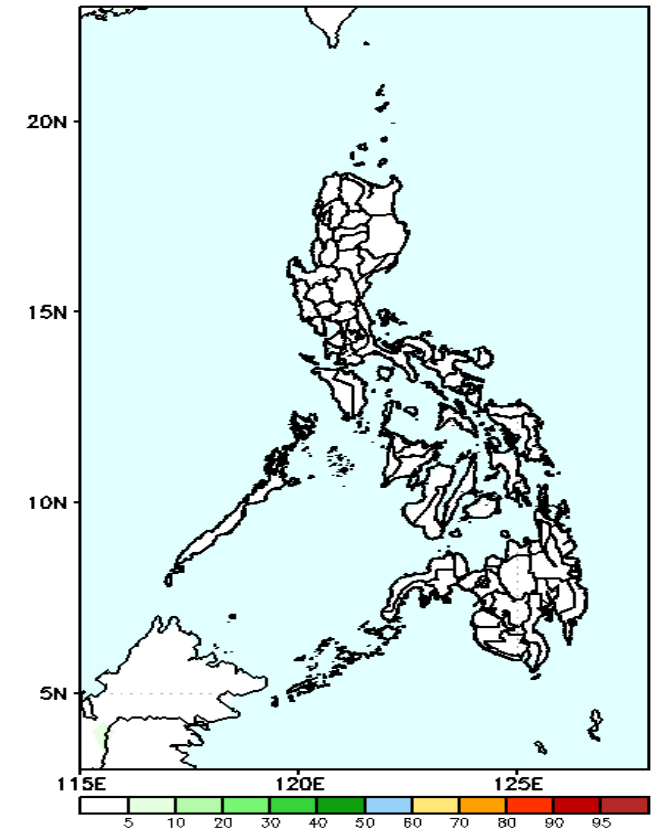
GEFS Week-1 Exceedance Prob. > 150mm
Valid: 20240520 - 20240526



Probability to Exceed 150mm

- Moderate to high over Ifugao and Nueva Vizcaya;
- Low over the rest of the country.

GEFS Week-1 Exceedance Prob. > 200mm
Valid: 20240520 - 20240526



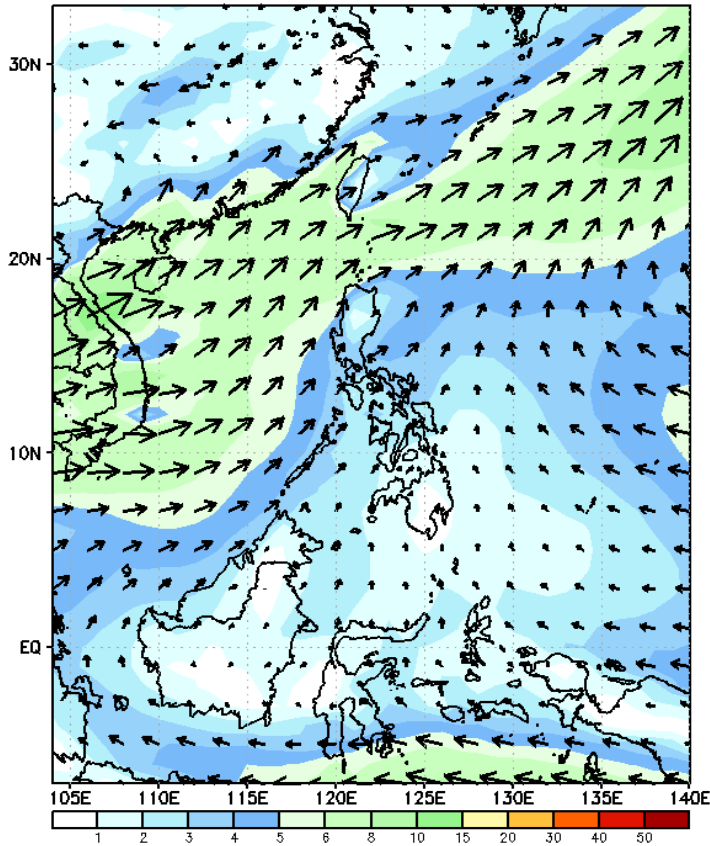
Probability to Exceed 200mm

- Low across the country.

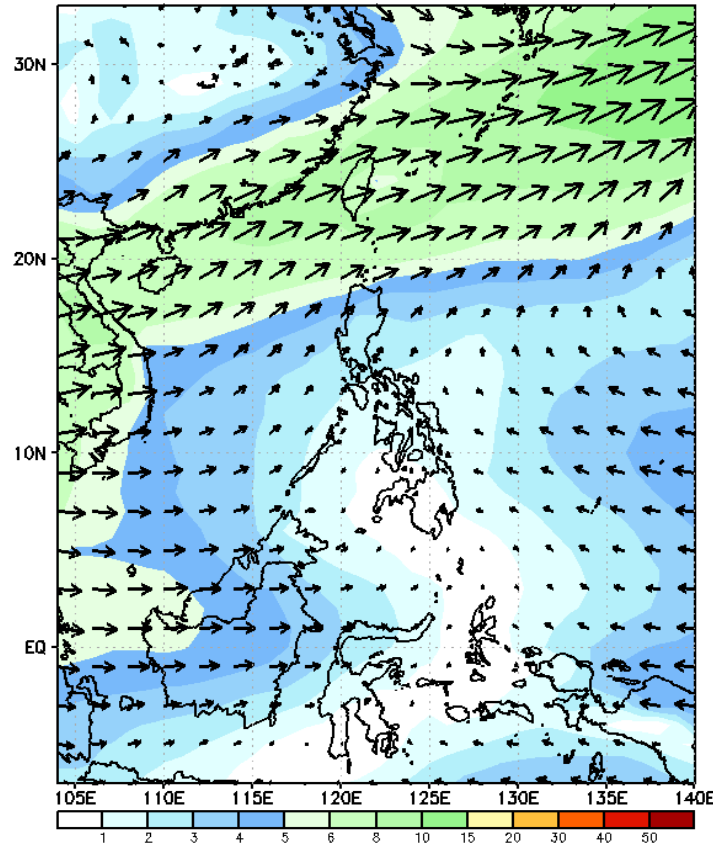
GEFS Week-2 Wind Forecasts:

Week 2: May 27- Jun 02, 2024

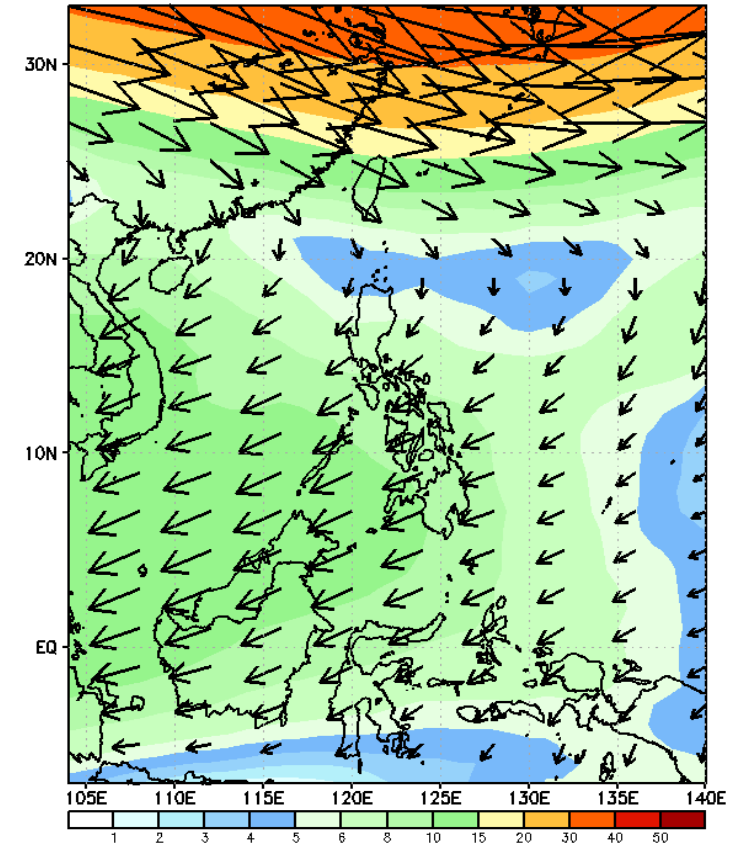
GEFS Week-2 850-hPa Wind Total
Valid: 20240527 - 20240602



GEFS Week-2 700-hPa Wind Total
Valid: 20240527 - 20240602



GEFS Week-2 200-hPa Wind Total
Valid: 20240527 - 20240602



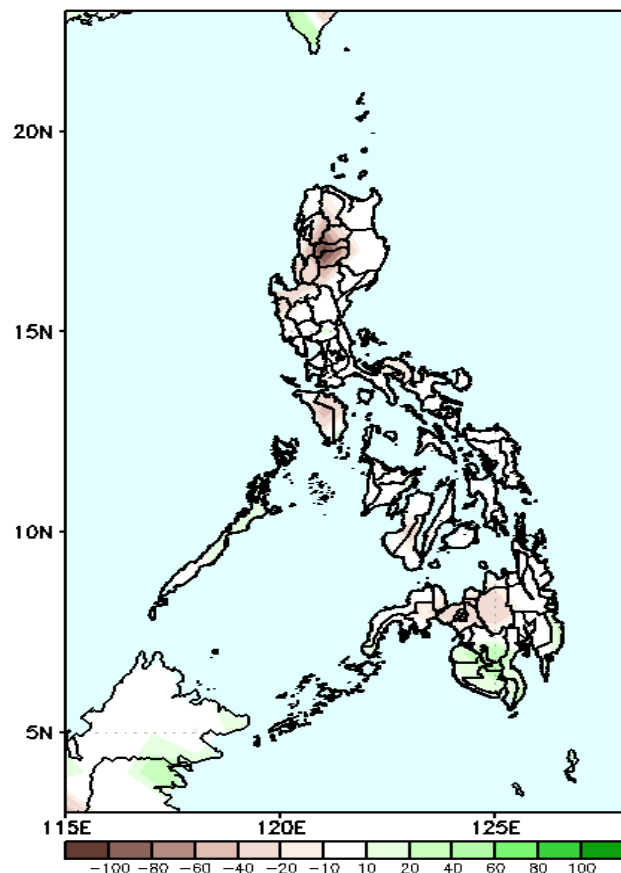
Southwest windflow will likely affect some areas in western Luzon. Easterlies will likely prevail in most parts of the country. Expect dry and warm days during the forecast period.

Precipitation Anomaly and Exceedance Probability > 25/50 mm



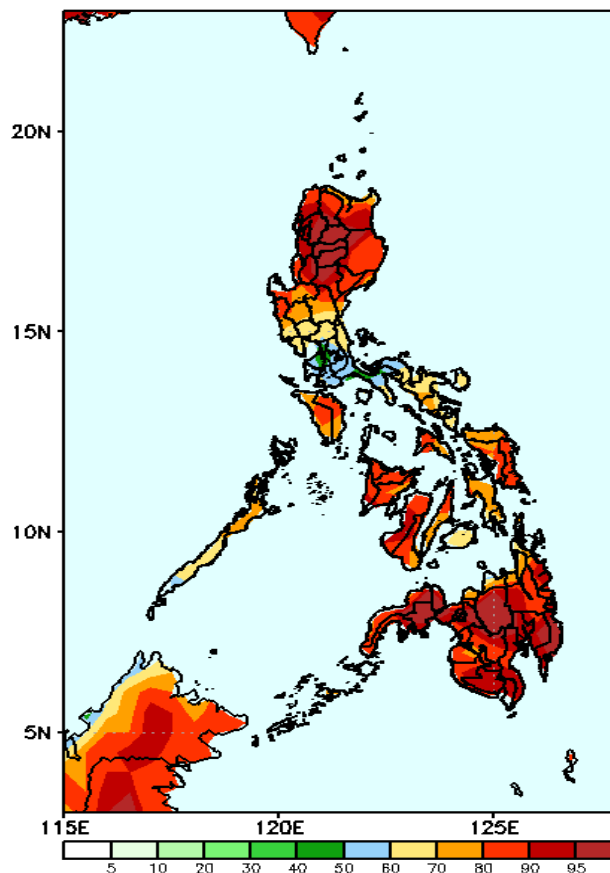
Week 2: May 27- Jun 02, 2024

GEFS Week-2 Precip. Anomaly
Valid: 20240527 - 20240602



Rainfall deficit of 20-40mm is expected in most parts of the country.

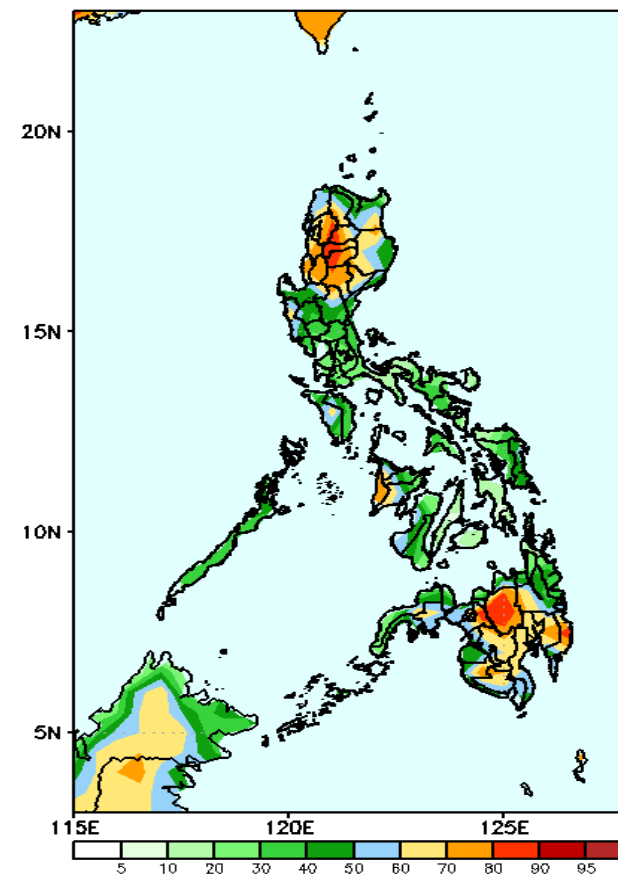
GEFS Week-2 Exceedance Prob. > 25mm
Valid: 20240527 - 20240602



Probability to Exceed 25mm

- High to very high over most parts of northern Luzon and Mindanao;
- Moderate to high over the rest of the country.

GEFS Week-2 Exceedance Prob. > 50mm
Valid: 20240527 - 20240602

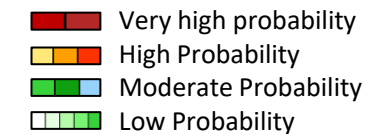


Probability to Exceed 50mm

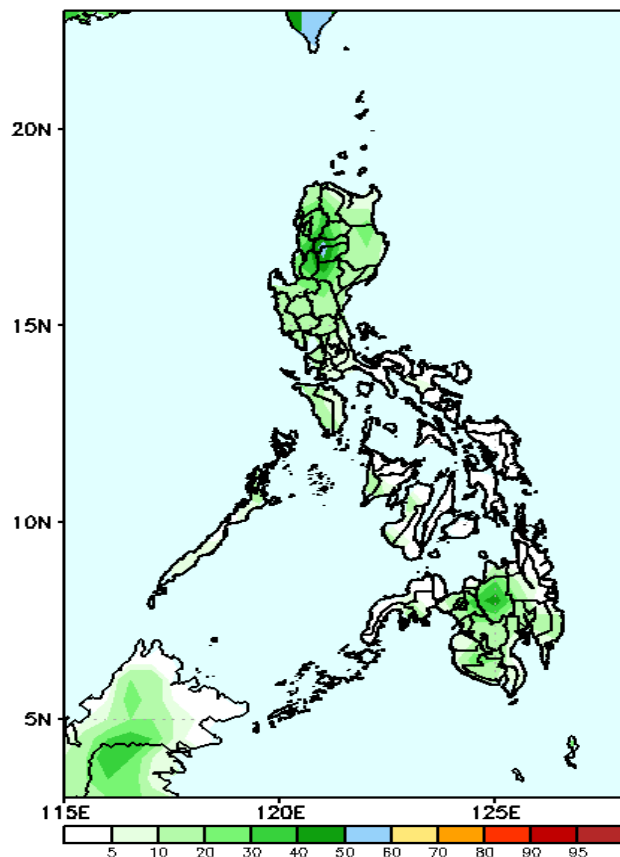
- Moderate to high over most of northern and central Luzon, Occidental Mindoro, Antique and most of Mindanao;
- Low to moderate over the rest of the country.

Exceedance Probability > 100/150/200 mm

Week 2: May 27- Jun 02, 2024



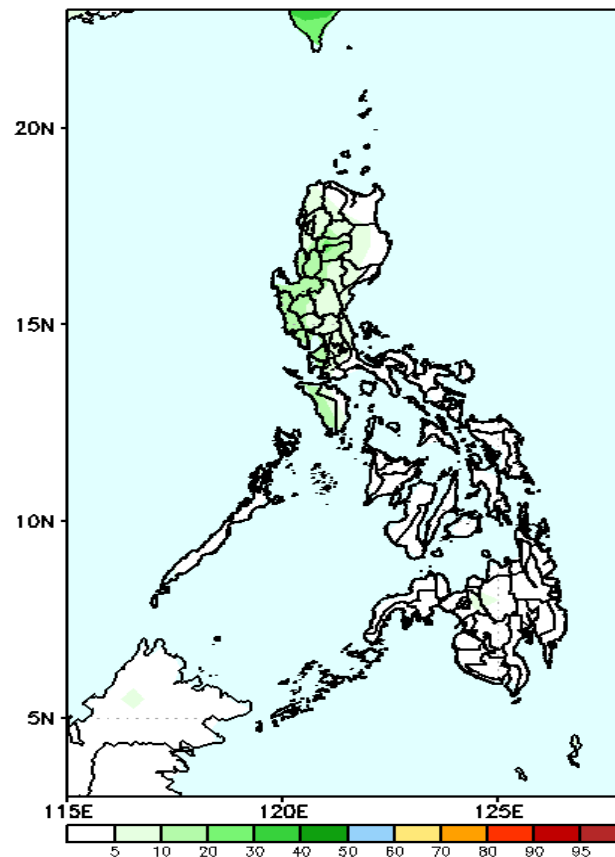
GEFS Week-2 Exceedance Prob. > 100mm
Valid: 20240527 - 20240602



Probability to Exceed 100mm

- Low to moderate over some areas in CAR and Bukidnon;
- Low over the rest of the country.

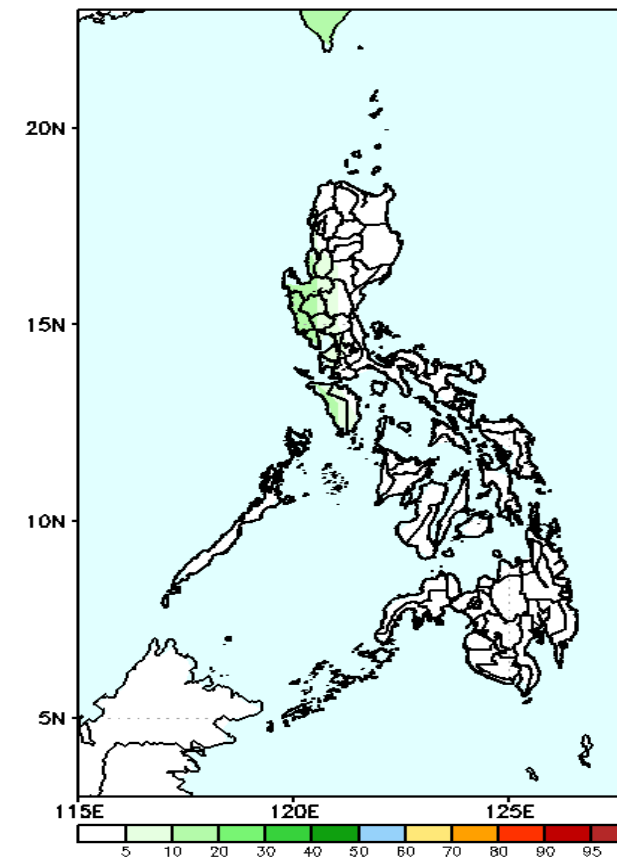
GEFS Week-2 Exceedance Prob. > 150mm
Valid: 20240527 - 20240602



Probability to Exceed 150mm

- Low across the country.

GEFS Week-2 Exceedance Prob. > 200mm
Valid: 20240527 - 20240602

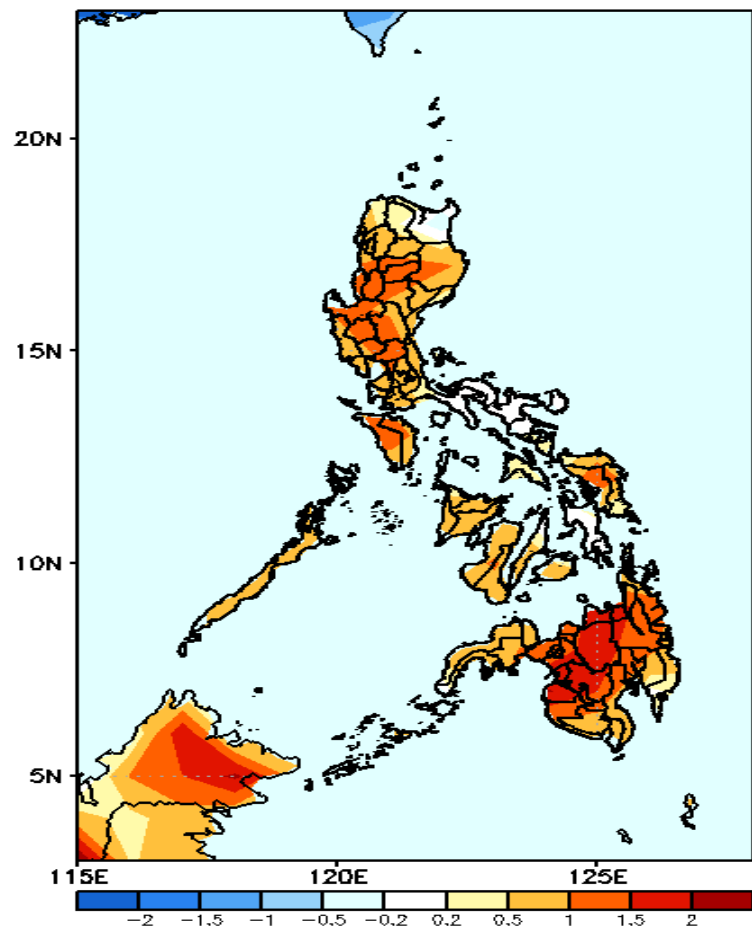


Probability to Exceed 200mm

- Low across the country.

GEFS Week-1 & 2 Forecasts: T2m Anomaly

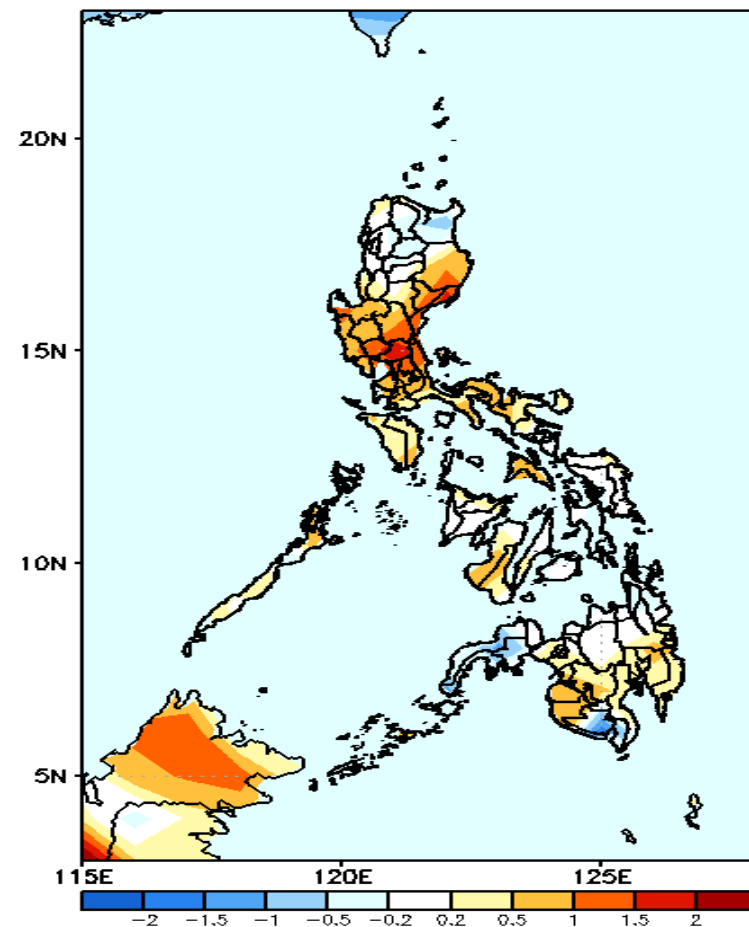
GEFS Week-1 T2m Anomaly
Valid: 20240520 — 20240526



2m Temperature Week 1: May 20-26, 2024

Slightly warmer to warmer than average surface air temperature will likely be experienced in most parts of the country.

GEFS Week-2 T2m Anomaly
Valid: 20240527 — 20240602



2m Temperature Week 2: May 27- Jun 02, 2024

Near to warmer than average surface air temperature will likely be experienced in most parts of the country.