



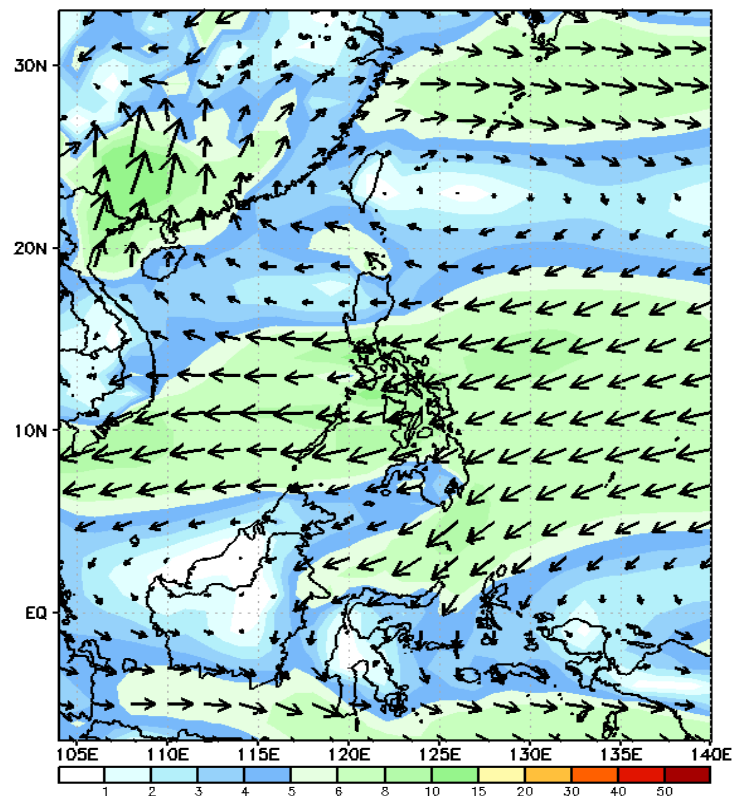
# Week 1 & Week 2 Forecast for the Philippines using GEFS Model



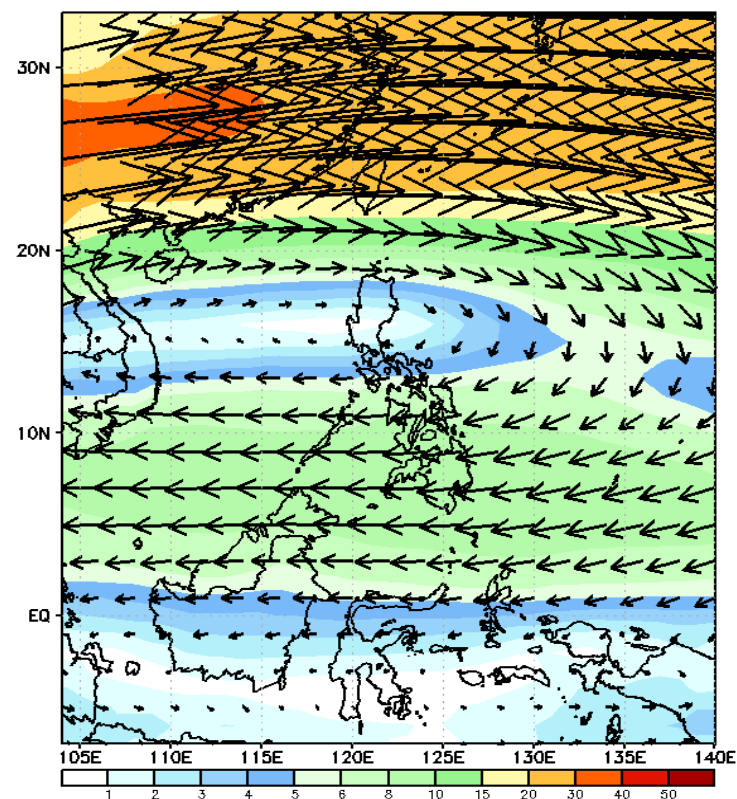
# GEFS Week-1 Forecasts: Wind Forecast

Week 1: February 19-25, 2024

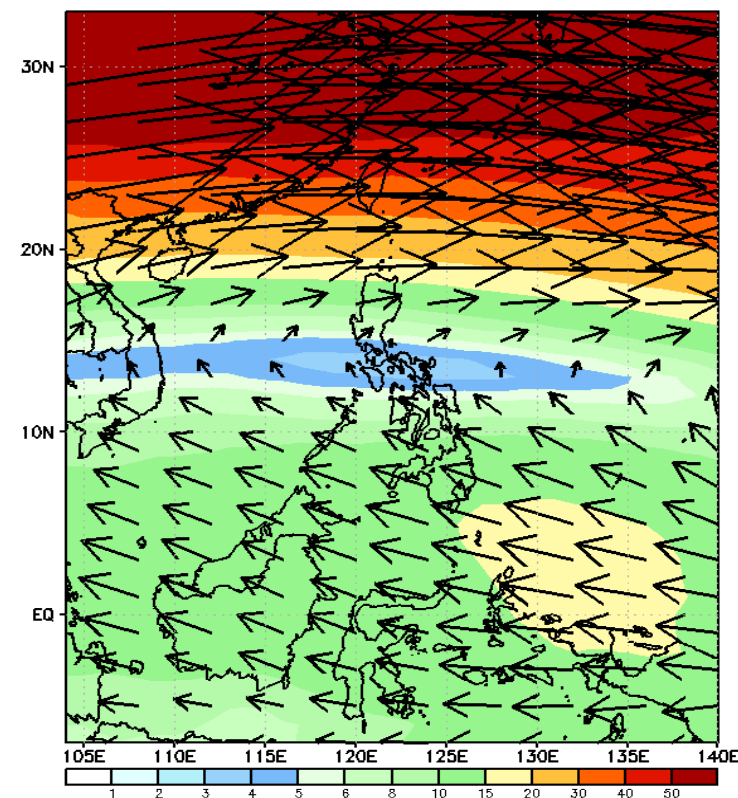
GEFS Week-1 850-hPa Wind Total  
Valid: 20240221 - 20240227



GEFS Week-1 500-hPa Wind Total  
Valid: 20240221 - 20240227



GEFS Week-1 200-hPa Wind Total  
Valid: 20240221 - 20240227



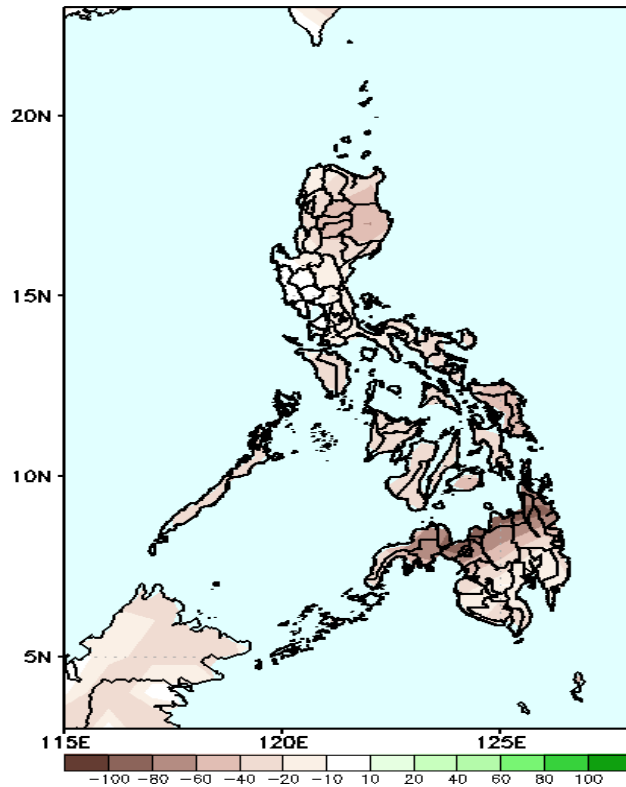
Easterlies affecting most parts of the country.

# Precipitation Anomaly and Exceedance Probability > 25/50 mm



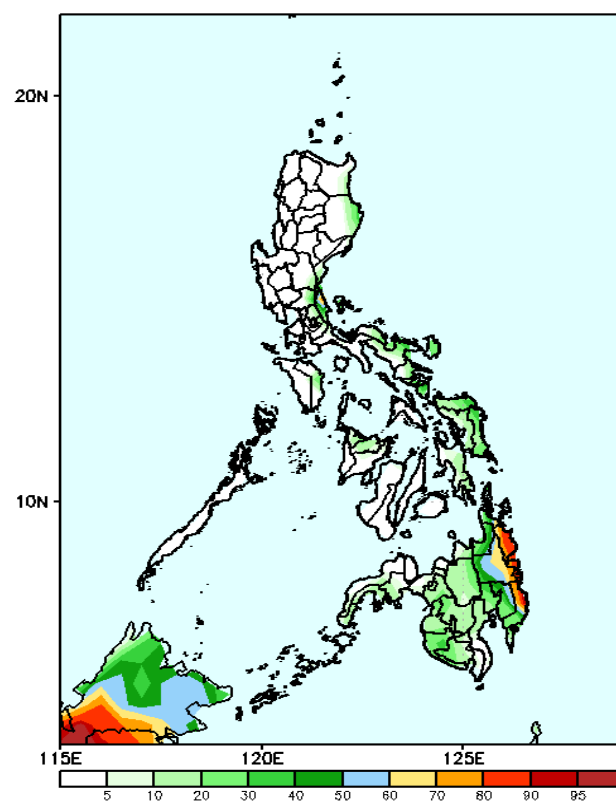
Week 1: February 19-25, 2024

GEFS Week-1 Precip Anomaly  
Valid: 20240221 - 20240227



Rainfall deficit of 40-100mm in most parts of the country is likely.

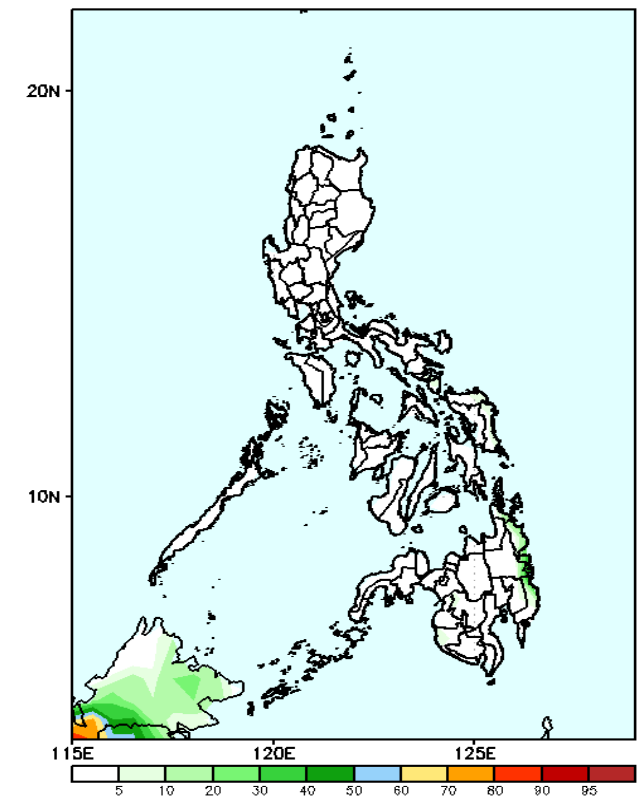
GEFS Week-1 Exceedance Prob. > 25mm  
Valid: 20240221 - 20240227



## Probability to Exceed 25mm

- Moderate to high over Caraga region, and the northern portion of Davao de Oro;
- Low to moderate over the northern portion of Davao de Oro;
- Low over the rest of the country.

GEFS Week-1 Exceedance Prob. > 50mm  
Valid: 20240221 - 20240227

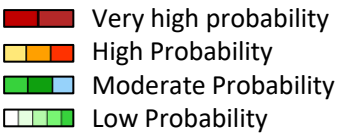


## Probability to Exceed 50 mm

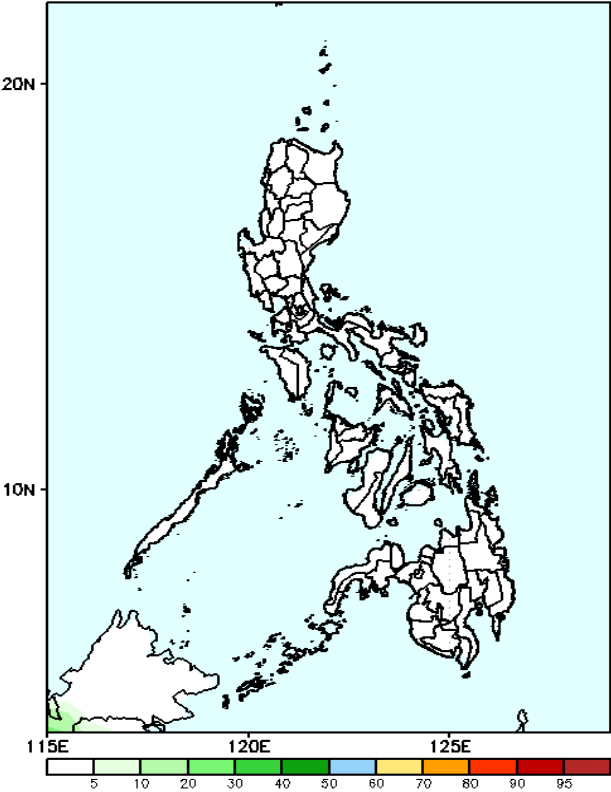
- Low across the country.

# Exceedance Probability > 100/150/200 mm

Week 1: February 19-25, 2024

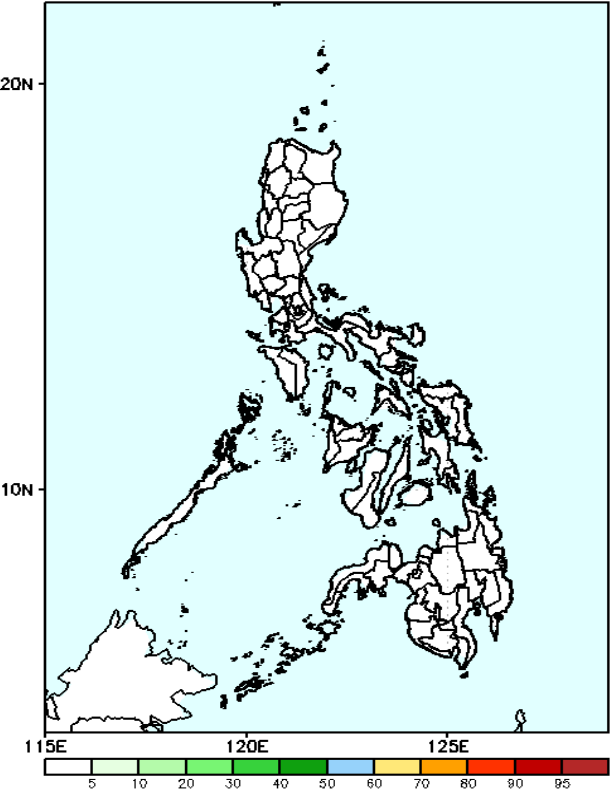


GEFS Week-1 Exceedance Prob. > 100mm  
Valid: 20240221 – 20240227



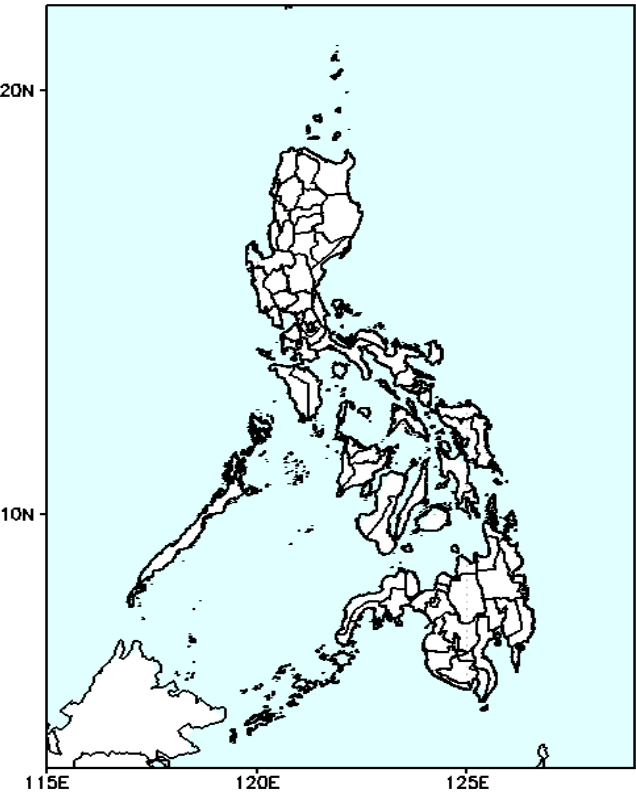
**Probability to Exceed 100mm**  
• Low across the country.

GEFS Week-1 Exceedance Prob. > 150mm  
Valid: 20240221 – 20240227



**Probability to Exceed 150mm**  
• Low across the country.

GEFS Week-1 Exceedance Prob. > 200mm  
Valid: 20240221 – 20240227



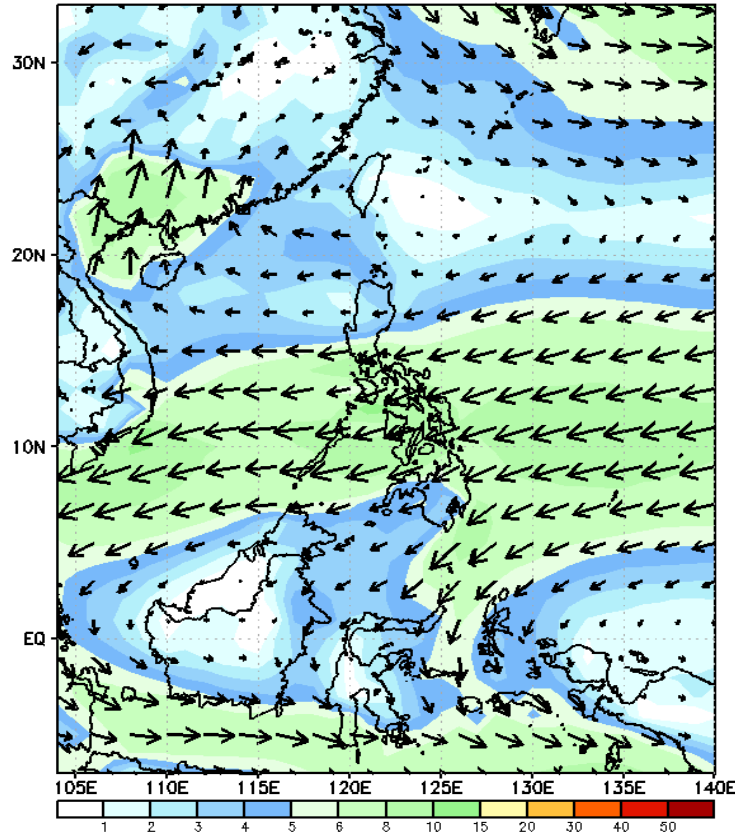
**Probability to Exceed 200mm**  
• Low across the country.



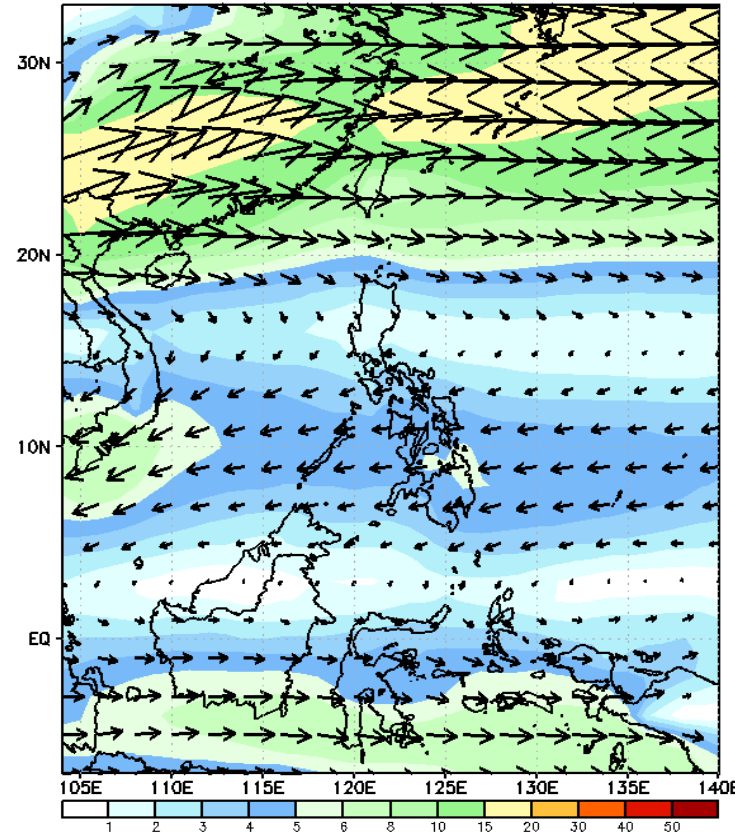
# GEFS Week-2 Forecasts: Wind Forecast

Week 2: Feb 26 – Mar 03 2024

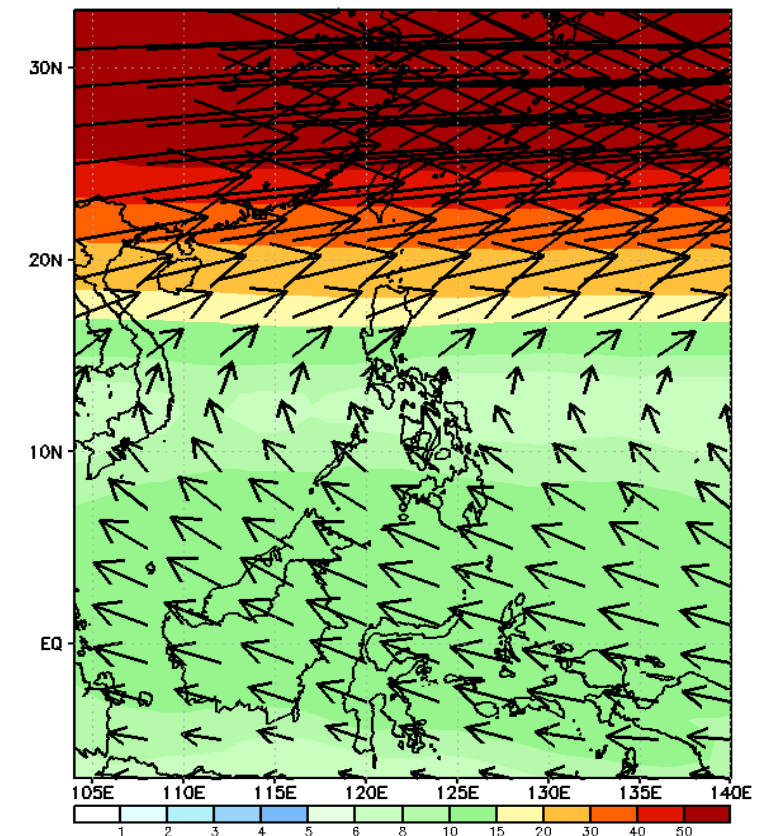
GEFS Week-2 850-hPa Wind Total  
Valid: 20240228 – 20240305



GEFS Week-2 700-hPa Wind Total  
Valid: 20240228 – 20240305

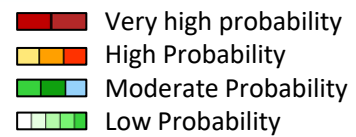


GEFS Week-2 200-hPa Wind Total  
Valid: 20240228 – 20240305



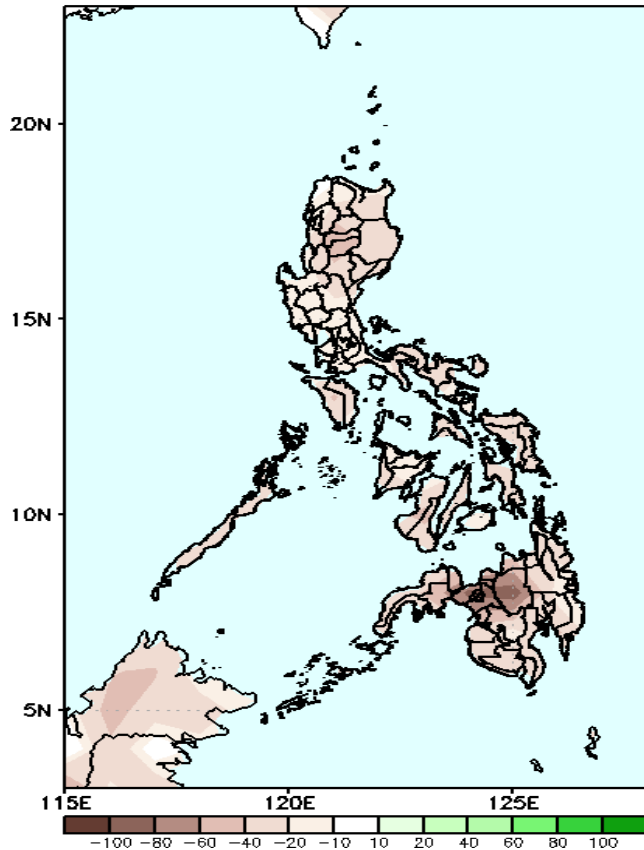
Northeast Monsoon will likely affect Northern Luzon while Easterlies for the rest of the country.

# Precipitation Anomaly and Exceedance Probability > 25/50 mm



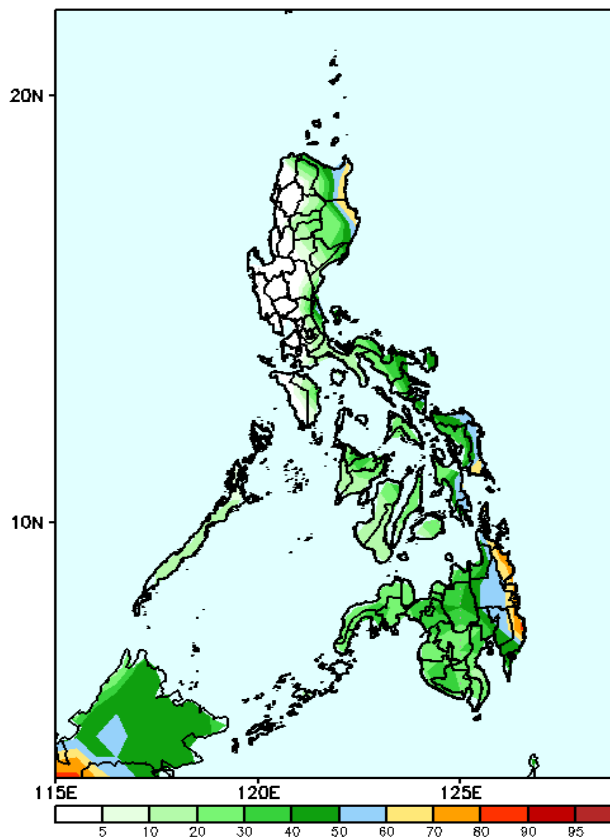
Week 2: Feb 26 – Mar 03 2024

GEFS Week-2 Precip Anomaly  
Valid: 20240228 – 20240305



Rainfall deficit of 40-100mm in most parts of the country is likely.

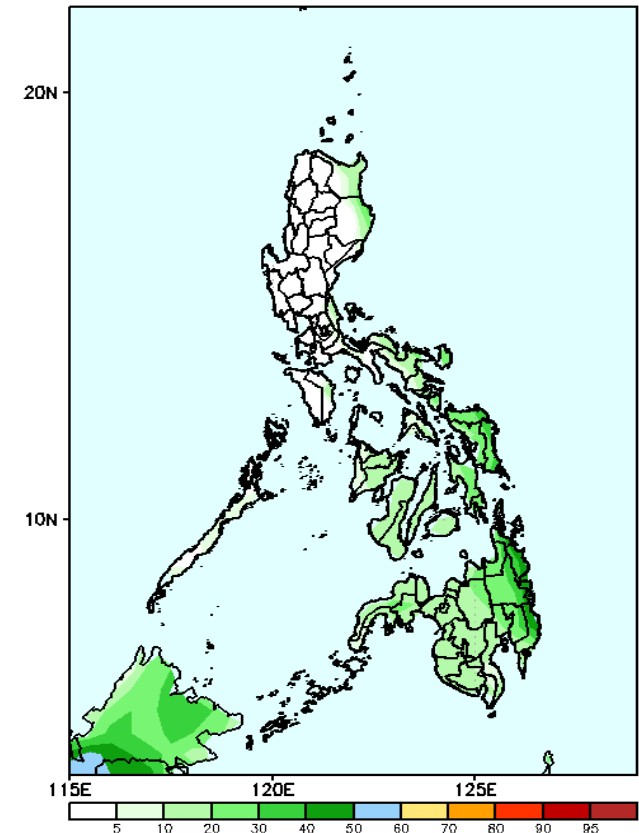
GEFS Week-2 Exceedance Prob. > 25mm  
Valid: 20240228 – 20240305



## Probability to Exceed 25mm

- Moderate to high over the eastern portion of Cagayan and Isabela, Eastern and Northern Samar and Eastern Mindanao;
- Low to moderate over Bicol Region, the rest of Eastern Visayas and the rest of Mindanao;
- Low over the rest of the country.

GEFS Week-2 Exceedance Prob. > 50mm  
Valid: 20240228 – 20240305



## Probability to Exceed 50mm

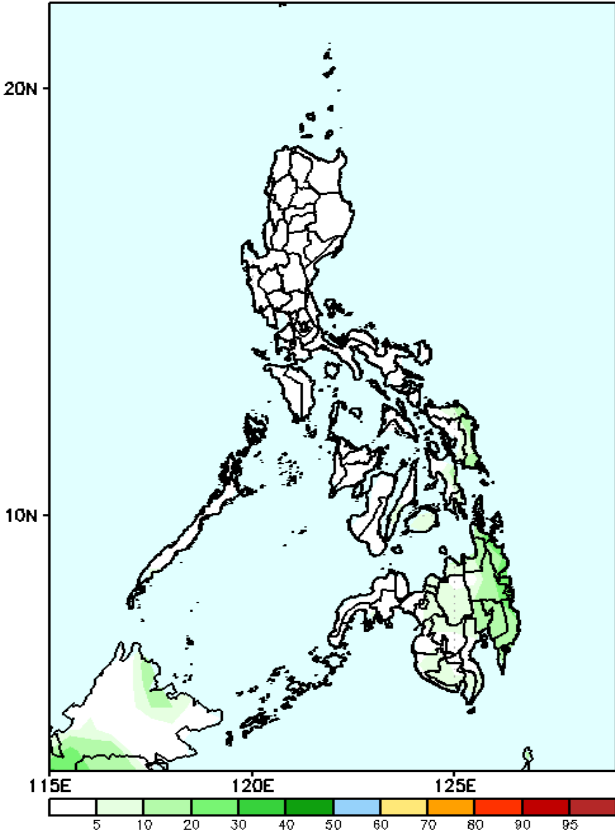
- Low to moderate over Mindanao
- Low across the country.

# Exceedance Probability > 100/150/200 mm

Week 2: Feb 26 – Mar 03 2024

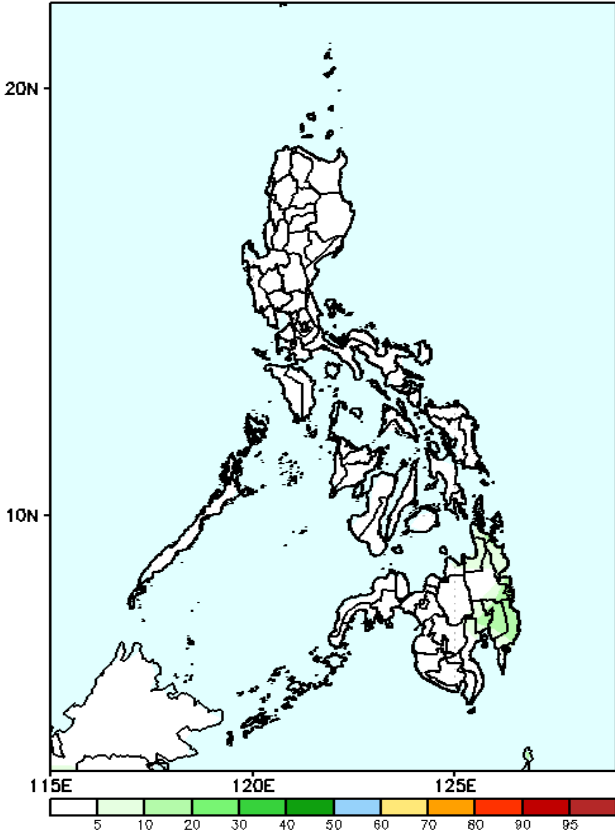
- Very high probability
- High Probability
- Moderate Probability
- Low Probability

GEFS Week-2 Exceedance Prob. > 100mm  
Valid: 20240228 – 20240305



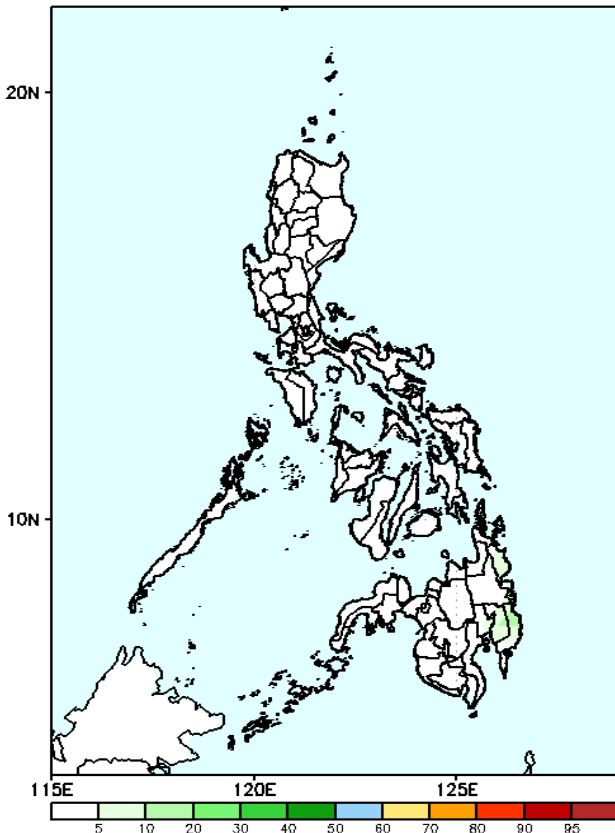
**Probability to Exceed 100mm**  
• Low across the country.

GEFS Week-2 Exceedance Prob. > 150mm  
Valid: 20240228 – 20240305



**Probability to Exceed 150mm**  
• Low across the country.

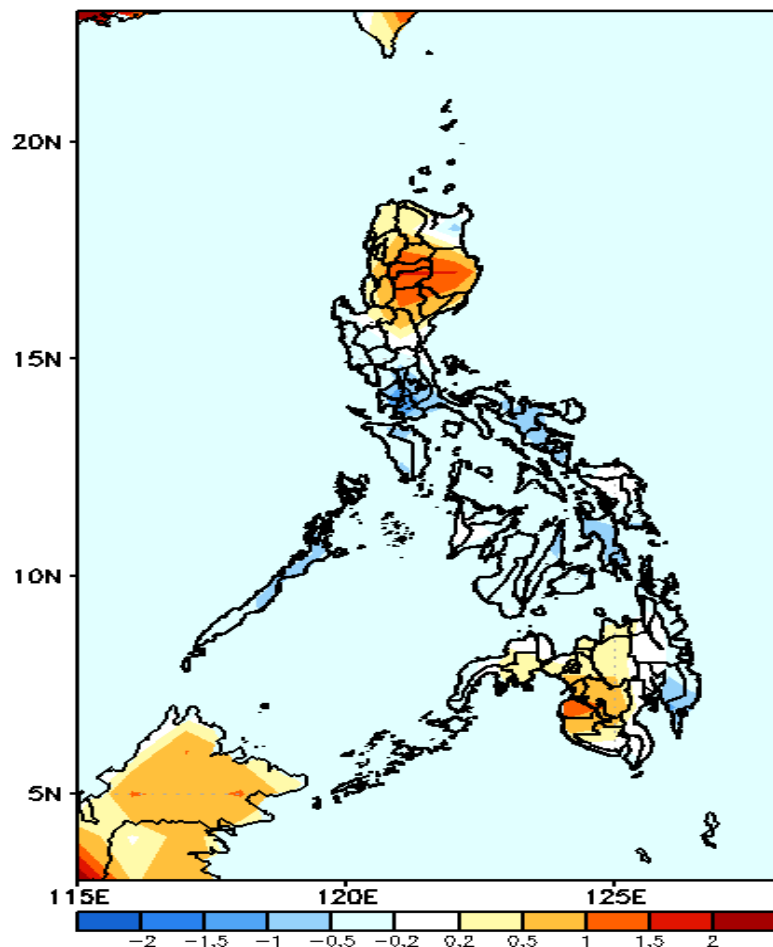
GEFS Week-2 Exceedance Prob. > 200mm  
Valid: 20240228 – 20240305



**Probability to Exceed 200mm**  
• Low across the country.

# GEFS Week-1 & 2 Forecasts: T2m Anomaly

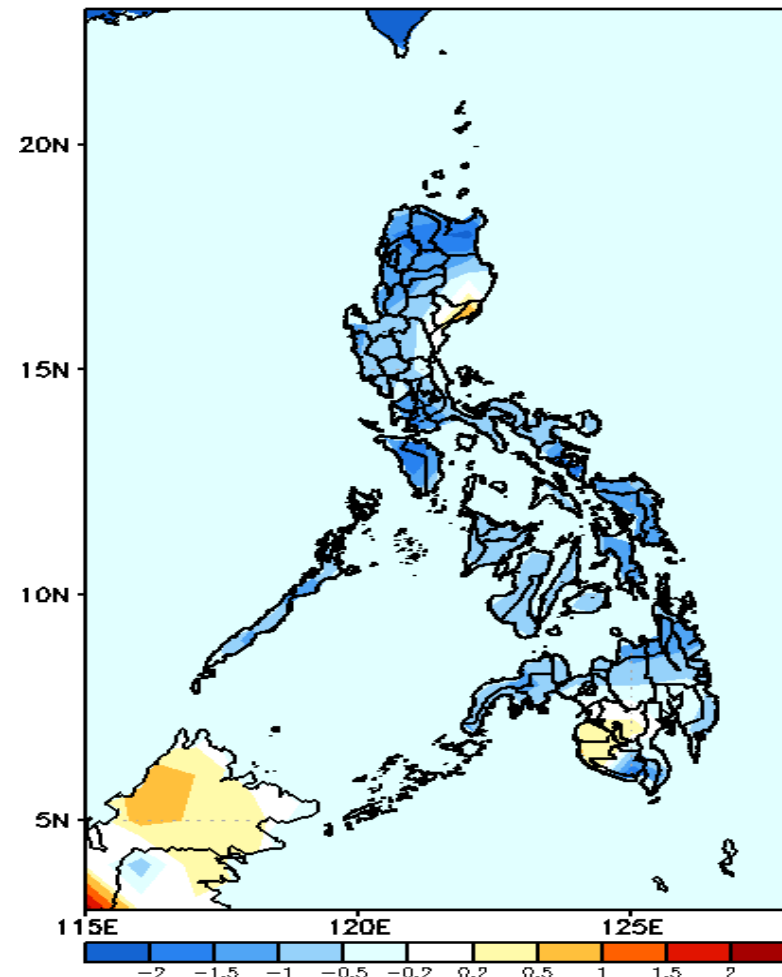
GEFS Week-1 T2m Anomaly  
Valid: 20240221 - 20240227



## 2m Temperature Week 1: February 19-25, 2024

Slightly warmer to warmer than average surface air temperature will likely be experienced in most parts of northern Luzon, Misamis Oriental, Bukidnon, and western Mindanao while near to slightly cooler temperature is expected for the rest of the country.

GEFS Week-2 T2m Anomaly  
Valid: 20240228 - 20240305



## 2m Temperature Week 2: Feb 26 – Mar 03 2024

Near to cooler than average surface air temperature will likely be experienced in most parts of the country except in Aurora, Maguindanao and Sultan Kudarat where slightly warmer than average temperature is expected.