



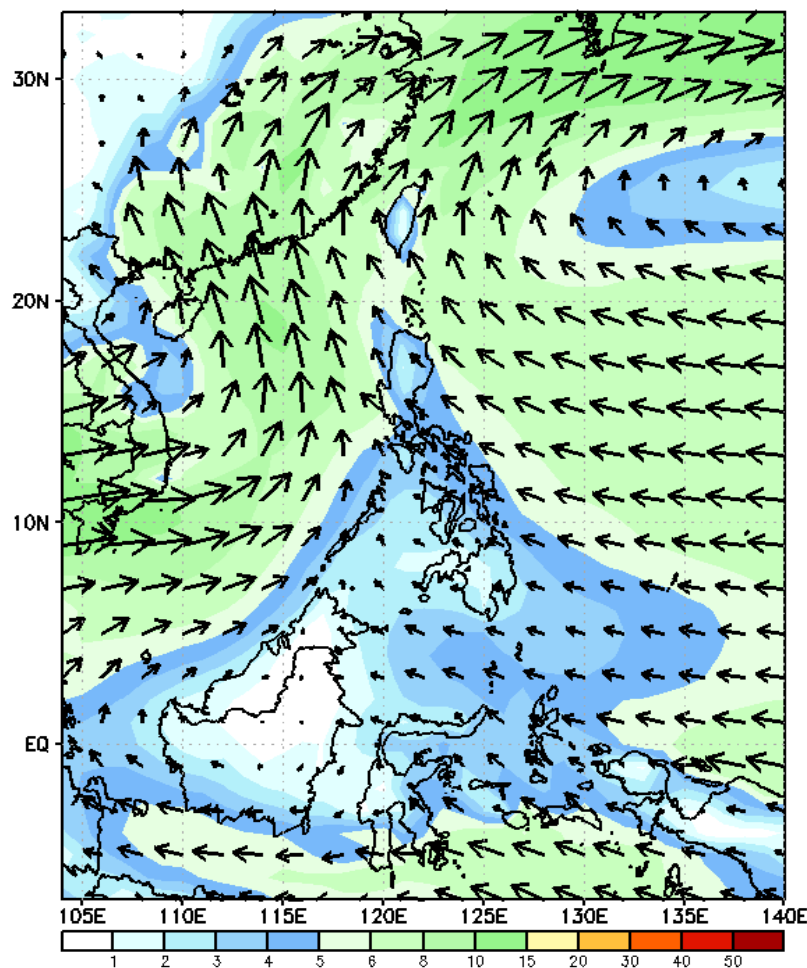
Week 1 & Week 2 Forecast for the Philippines using GEFS Model



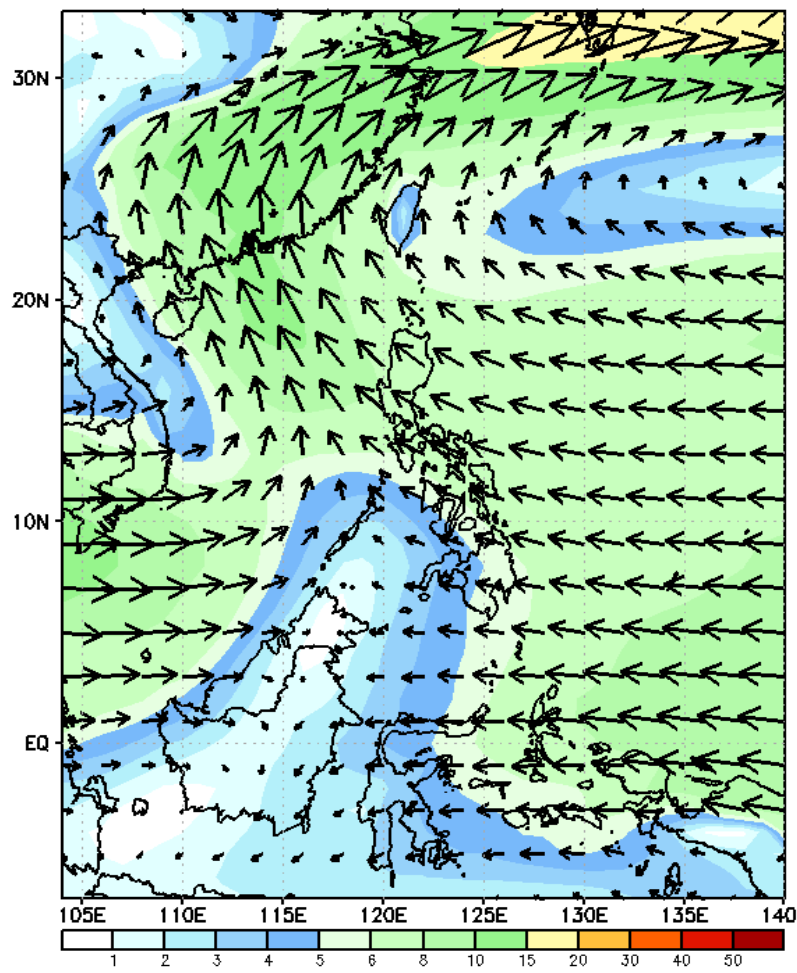
GEFS Week-1 Wind Forecasts:

Week 1: Jun 21-27, 2024

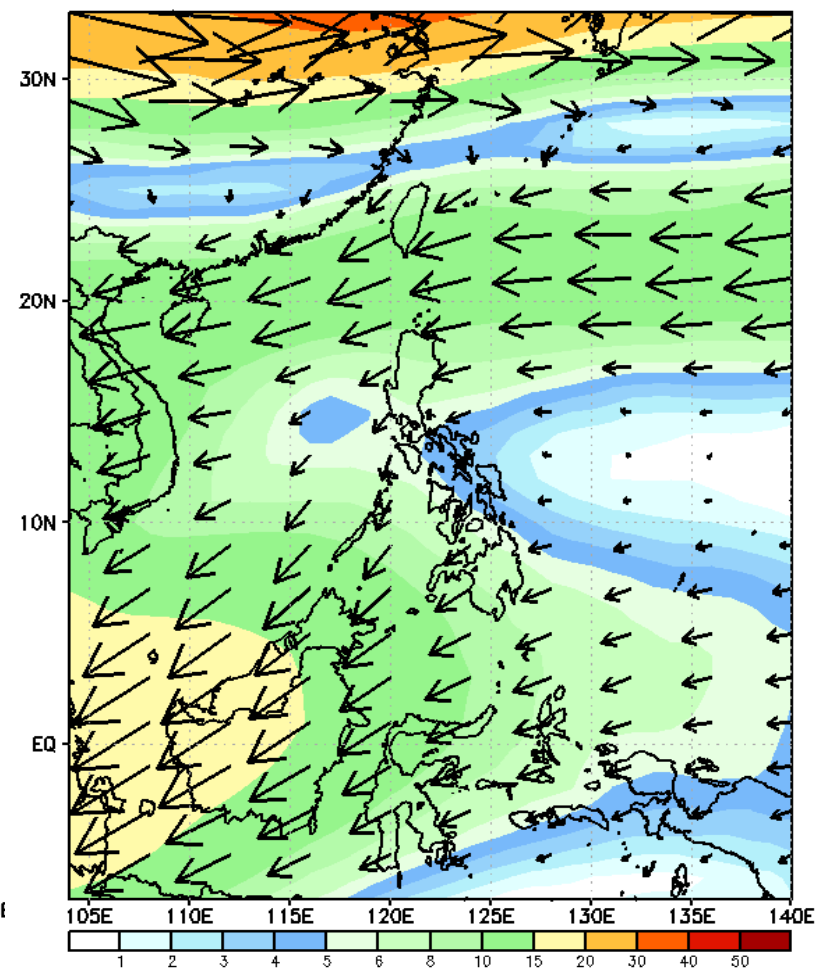
GEFS Week-1 850-hPa Wind Total
Valid: 20240621 - 20240627



GEFS Week-1 700-hPa Wind Total
Valid: 20240621 - 20240627

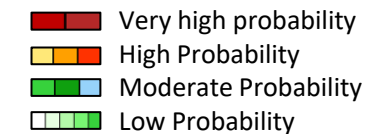


GEFS Week-1 200-hPa Wind Total
Valid: 20240621 - 20240627



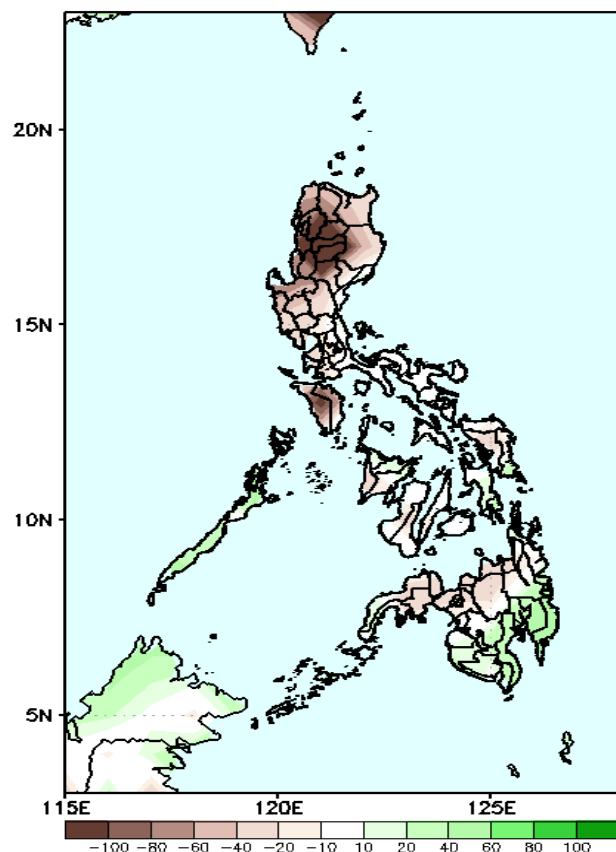
Southwest Monsoon affecting western sections of the country. Easterlies affecting the rest of the country.

Precipitation Anomaly and Exceedance Probability > 25/50 mm



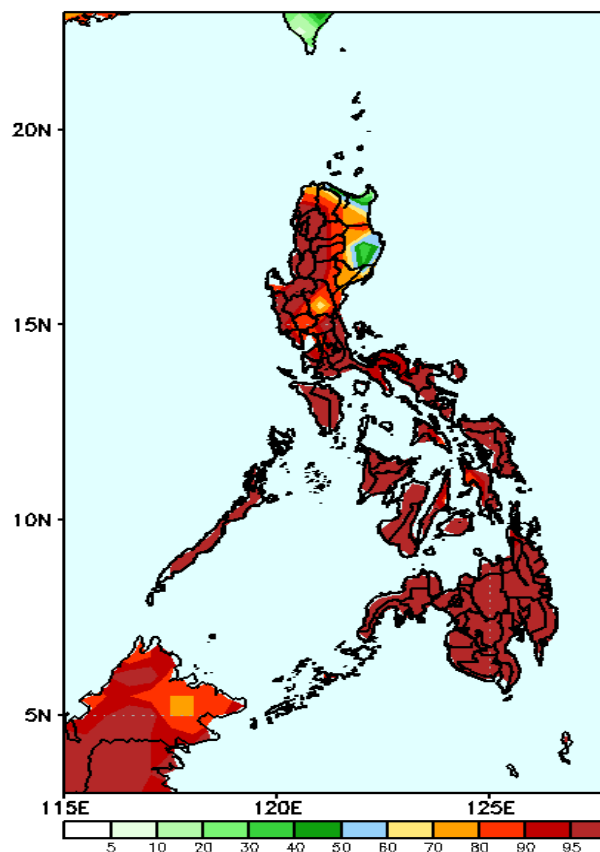
Week 1: Jun 21-27, 2024

GEFS Week-1 Precip Anomaly
Valid: 20240621 - 20240627



Rainfall deficit of more than 100mm in CAR, Ilocos Sur and La Union; 20-90mm for the rest of Luzon, Visayas, and northern Mindanao while 40-80mm increase of rainfall for the rest of Mindanao.

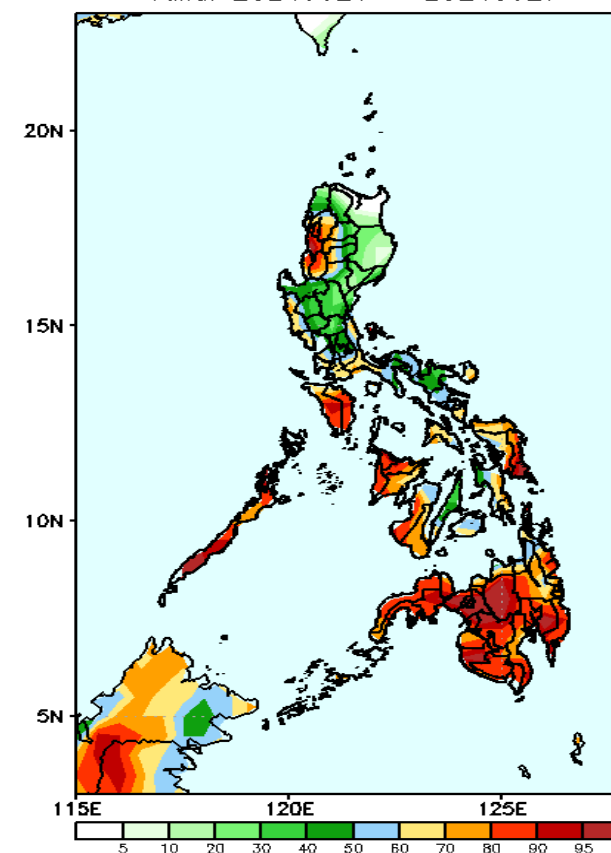
GEFS Week-1 Exceedance Prob. > 25mm
Valid: 20240621 - 20240627



Probability to Exceed 25mm

- High to very high over most of the country;
- Moderate to high over the eastern section of Cagayan Valley.

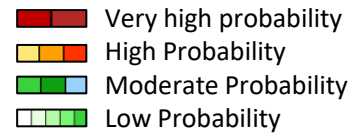
GEFS Week-1 Exceedance Prob. > 50mm
Valid: 20240621 - 20240627



Probability to Exceed 50mm

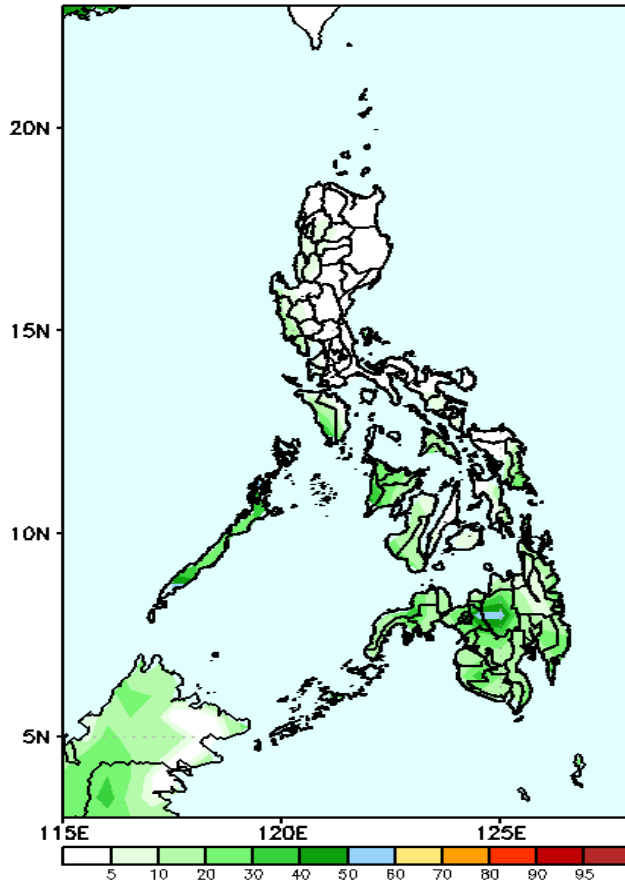
- High to very high over most of Mindanao and the western section of Southern Luzon;
- Moderate to high over Visayas, NCR, the rest of western Luzon, and the rest of Southern Luzon;
- Low to moderate over Cagayan Valley.

Exceedance Probability > 100/150/200 mm



Week 1: Jun 21-27, 2024

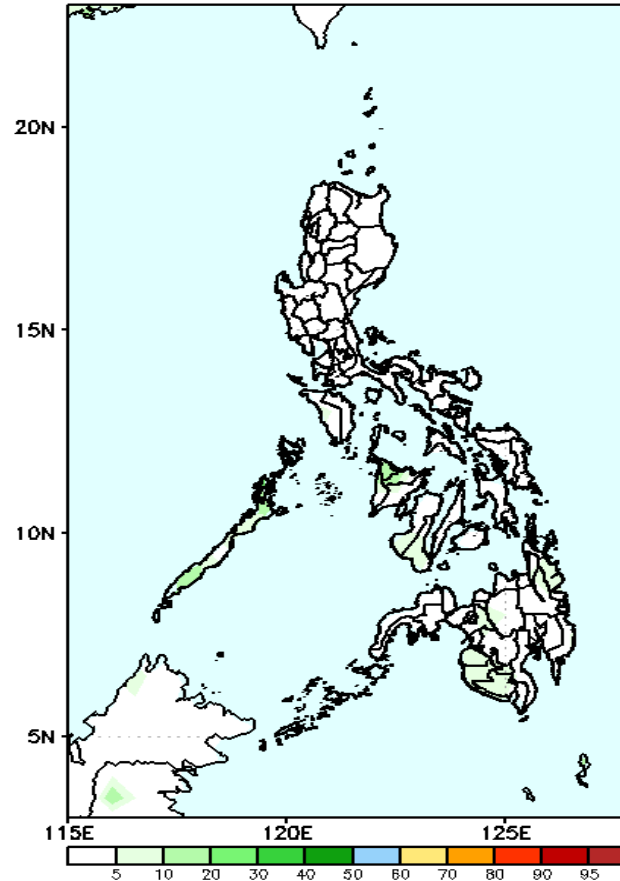
GEFS Week-1 Exceedance Prob. > 100mm
Valid: 20240621 - 20240627



Probability to Exceed 100mm

- Low to moderate to high over Palawan, Mindanao, and Western Visayas;
- Low over the rest of the country.

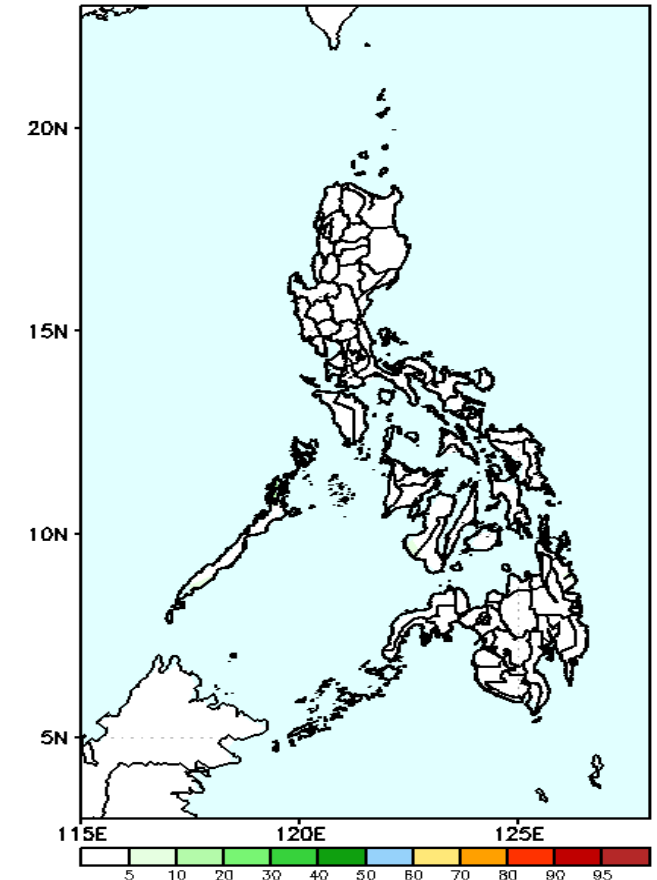
GEFS Week-1 Exceedance Prob. > 150mm
Valid: 20240621 - 20240627



Probability to Exceed 150mm

- Low across the country.

GEFS Week-1 Exceedance Prob. > 200mm
Valid: 20240621 - 20240627



Probability to Exceed 200mm

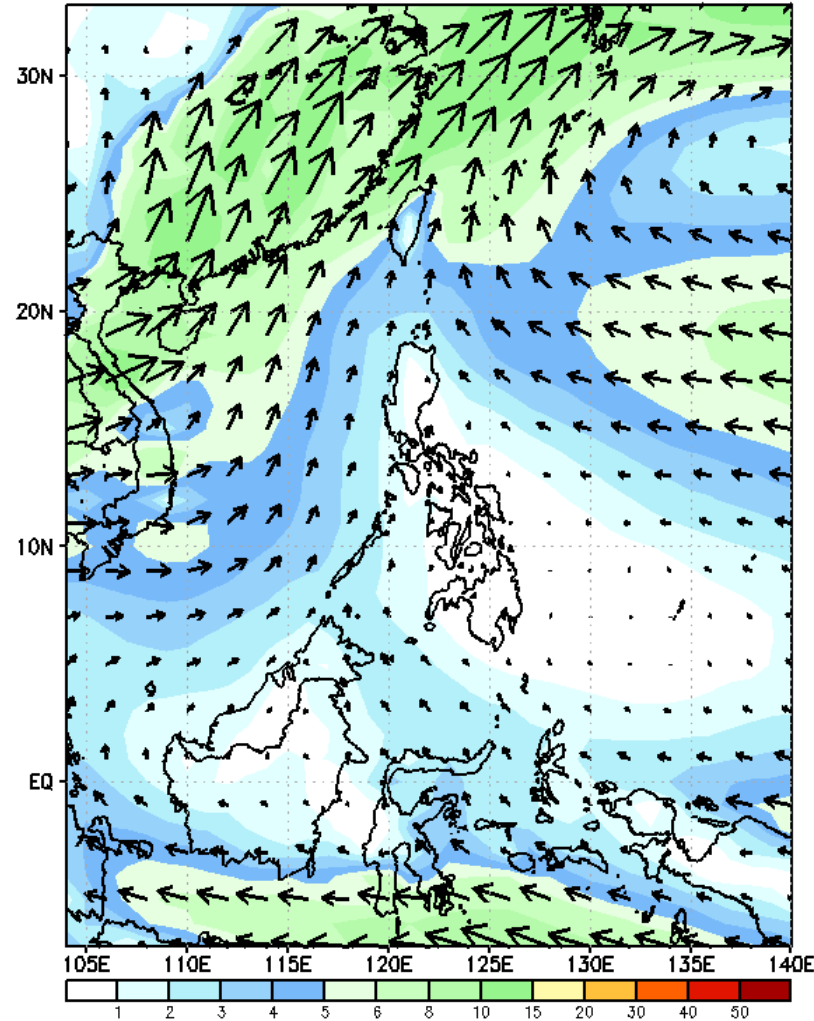
- Low across the country.



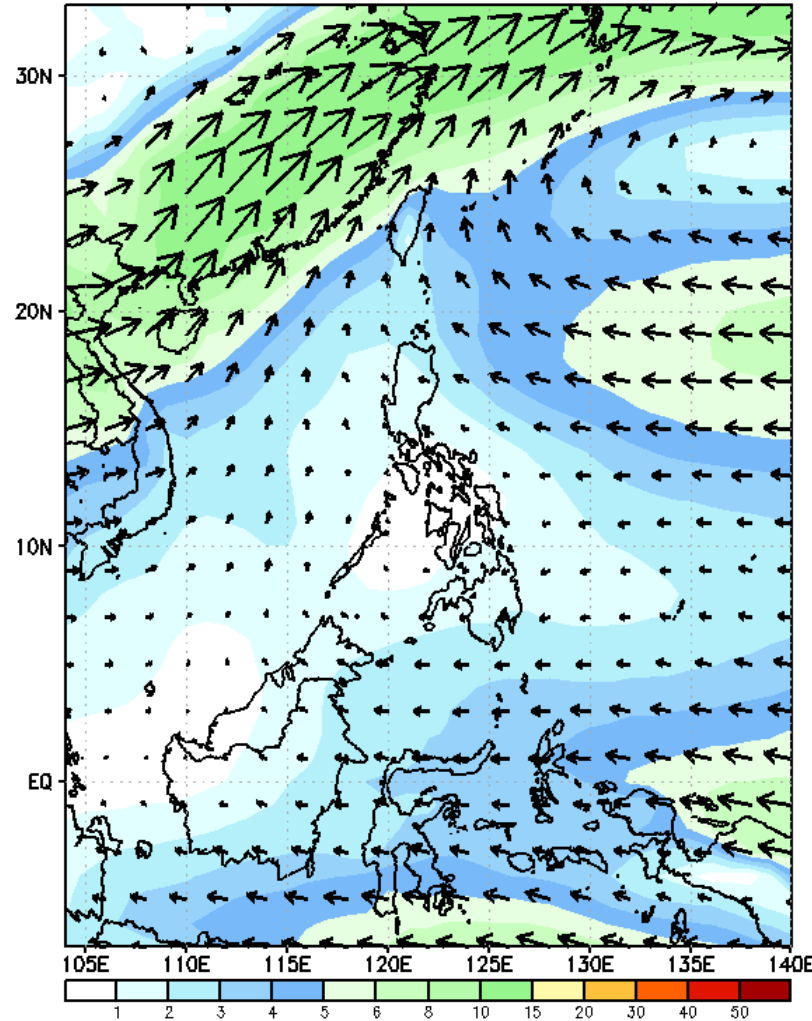
GEFS Week-2 Wind Forecasts:

Week 2: Jun 28- Jul 04, 2024

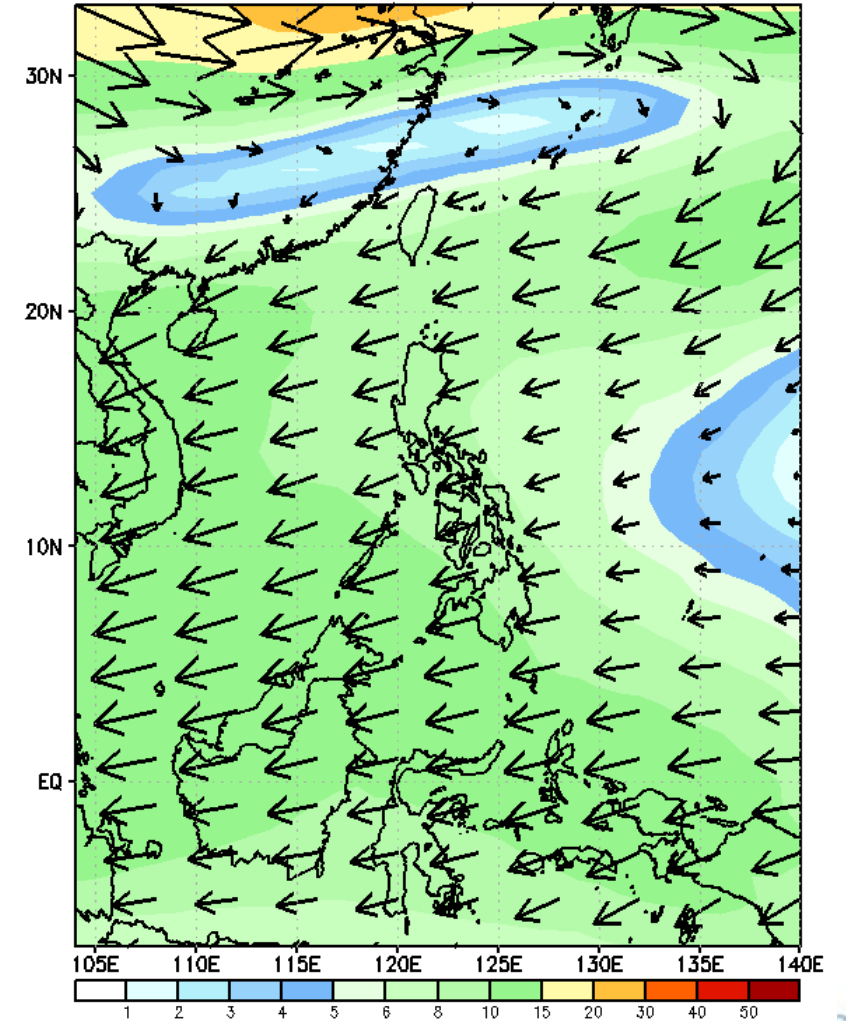
GEFS Week-2 850-hPa Wind Total
Valid: 20240628 - 20240704



GEFS Week-2 700-hPa Wind Total
Valid: 20240628 - 20240704



GEFS Week-2 200-hPa Wind Total
Valid: 20240628 - 20240704



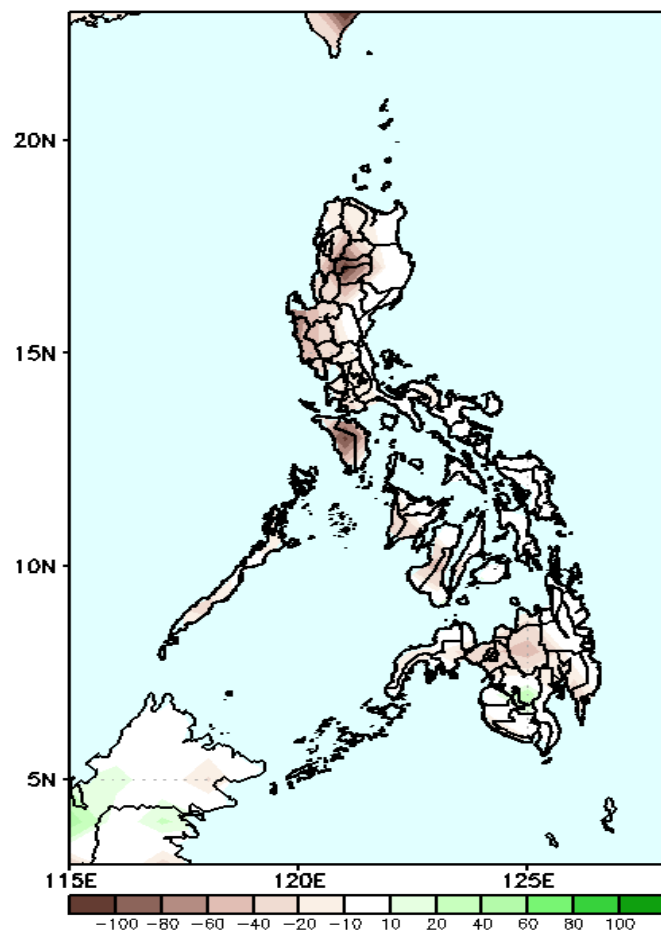
Easterlies affecting most parts of the country .

Precipitation Anomaly and Exceedance Probability > 25/50 mm



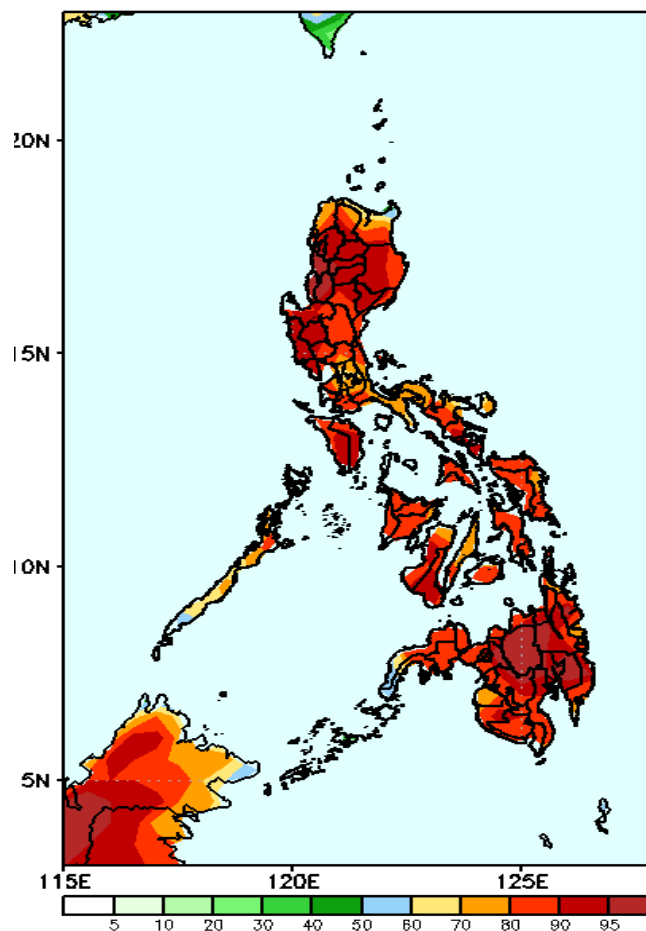
Week 2: Jun 28- Jul 04, 2024

GEFS Week-2 Precip Anomaly
Valid: 20240628 - 20240704



Rainfall deficit of 20-80mm in most parts of the country is expected.

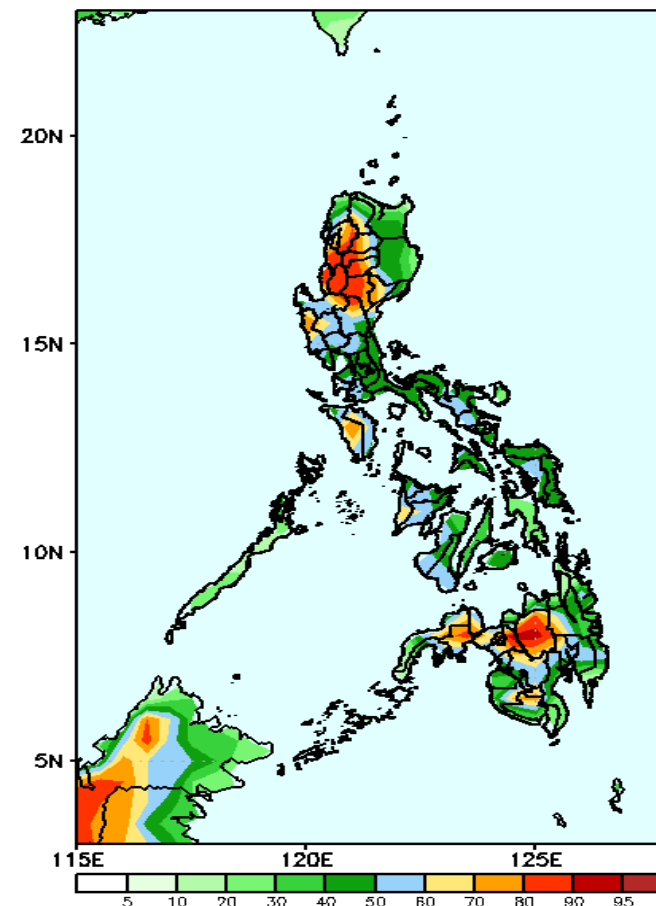
GEFS Week-2 Exceedance Prob. > 25mm
Valid: 20240628 - 20240704



Probability to Exceed 25mm

- High to very high over most parts of the country

GEFS Week-2 Exceedance Prob. > 50mm
Valid: 20240628 - 20240704

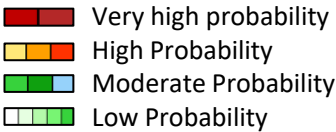


Probability to Exceed 50mm

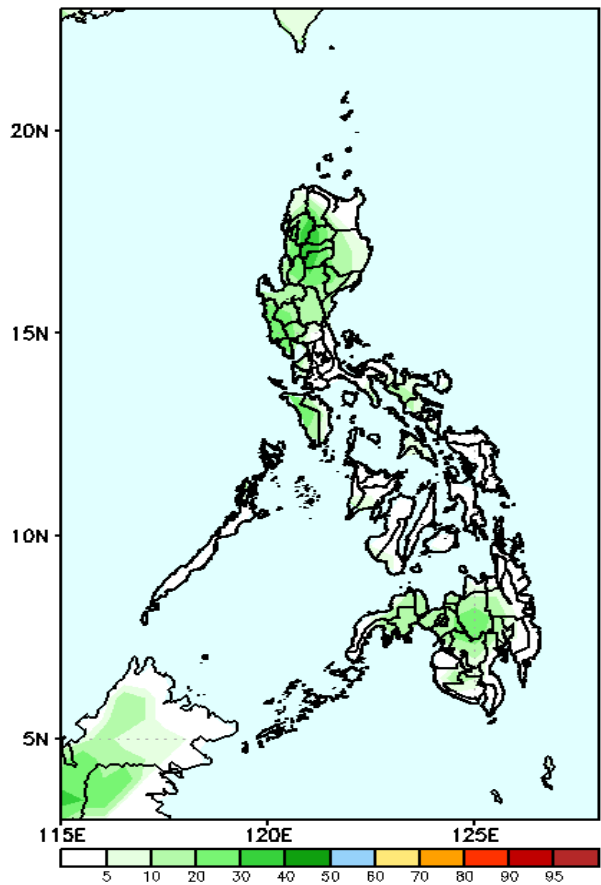
- High to very high over CAR, La Union, Ilocos Sur, Bukidnon, Lanao provinces, and Zamboanga del Sur;
- Moderate to high over the rest of the country.

Exceedance Probability > 100/150/200 mm

Week 2: Jun 28- Jul 04, 2024

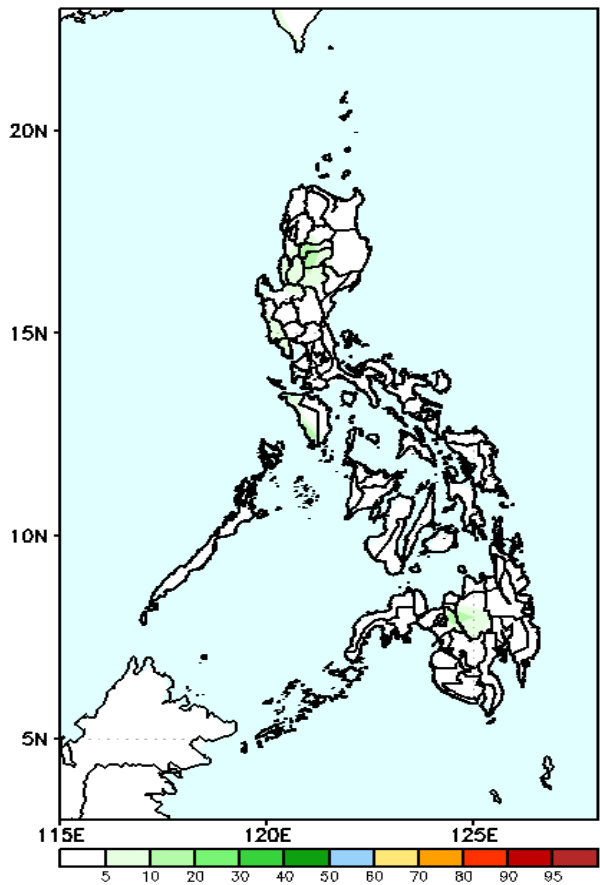


GEFS Week-2 Exceedance Prob. > 100mm
Valid: 20240628 – 20240704



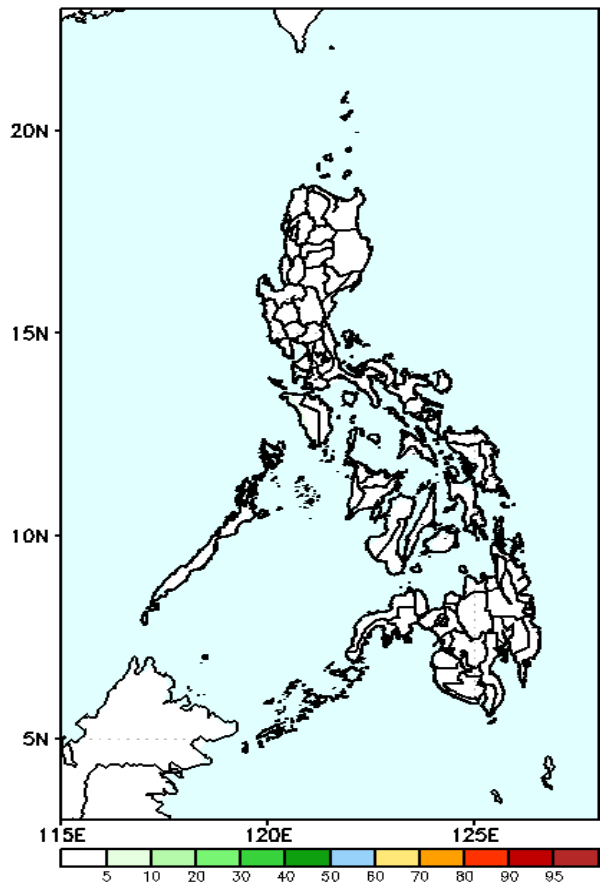
Probability to Exceed 100mm
• Low across the country.

GEFS Week-2 Exceedance Prob. > 150mm
Valid: 20240628 – 20240704



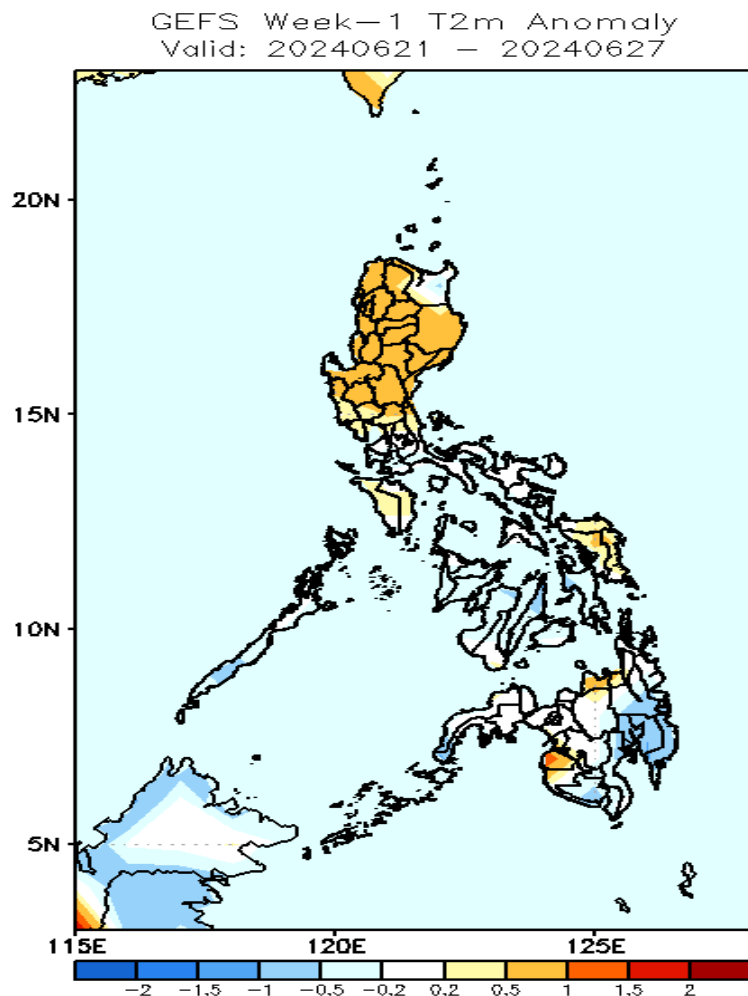
Probability to Exceed 150mm
• Low across the country.

GEFS Week-2 Exceedance Prob. > 200mm
Valid: 20240628 – 20240704



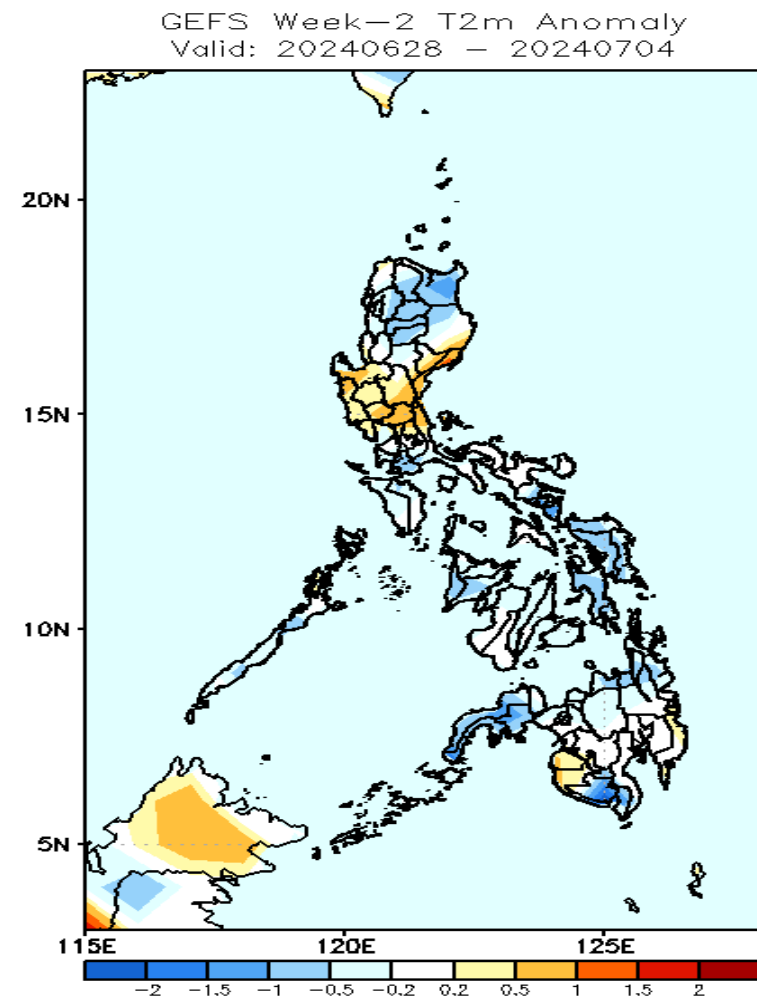
Probability to Exceed 200mm
• Low across the country.

GEFS Week-1 & 2 Forecasts: T2m Anomaly



2m Temperature Week 1: Jun 21-27, 2024

Near to slightly warmer than average surface air temperature will likely be experienced in most parts of the country except in southeastern part of Mindanao where slightly cooler temperature is expected.



2m Temperature Week 2: Jun 28-Jul 04, 2024

Near to cooler surface air temperature will likely be experienced in most parts of the country except in central Luzon and some areas in eastern Luzon where slightly warmer than average temperature is expected.