



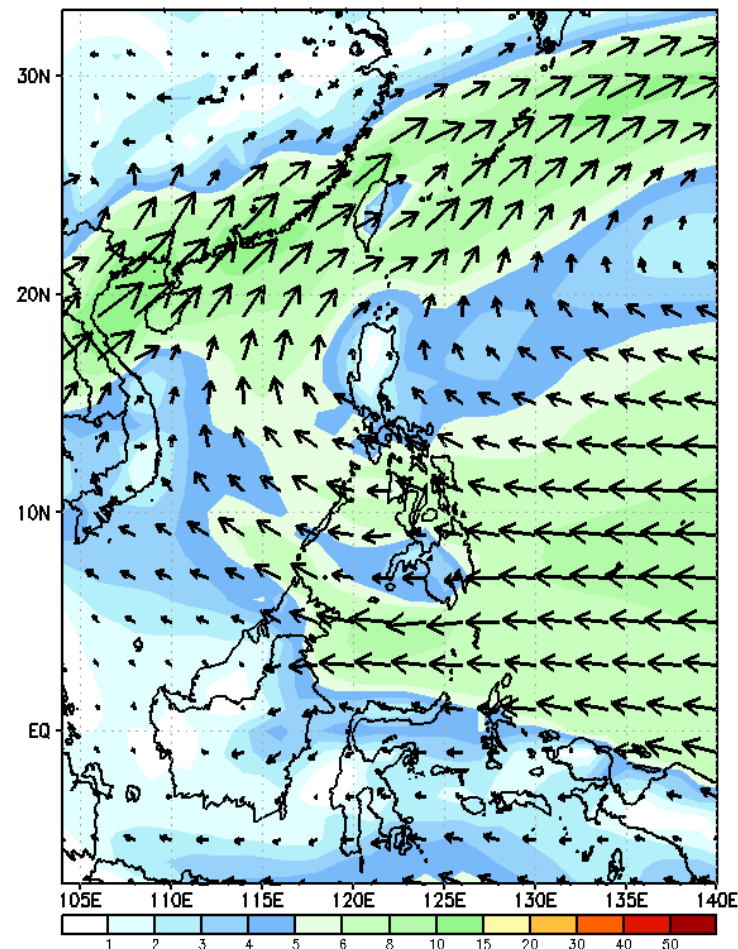
Week 1 & Week 2 Forecast for the Philippines using GEFS Model



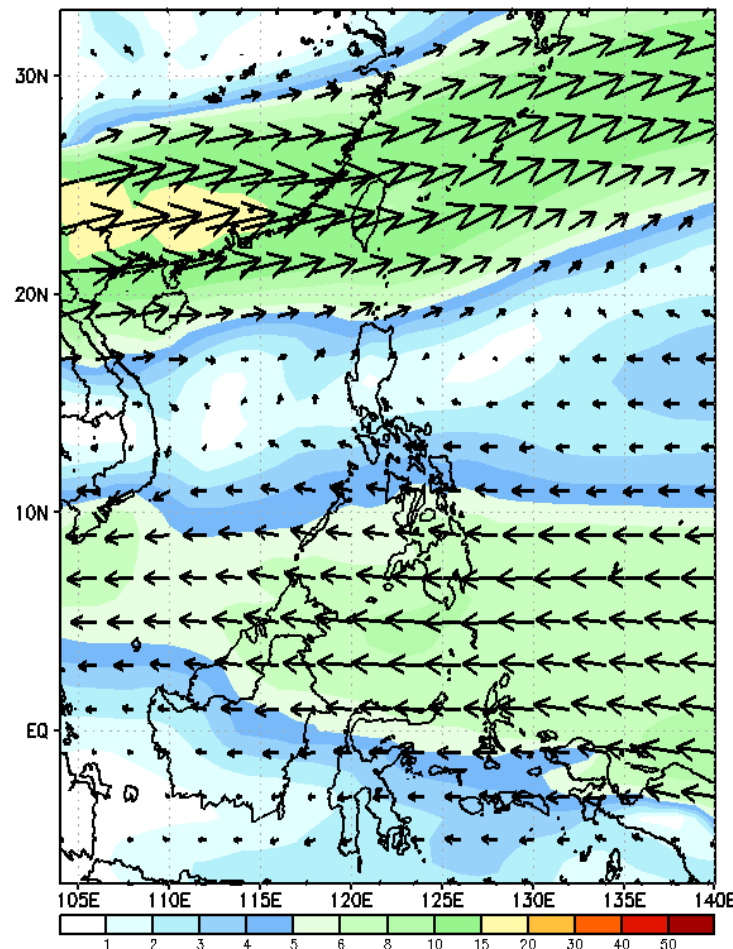
GEFS Week-1 Wind Forecasts:

Week 1: April 22 - 28, 2024

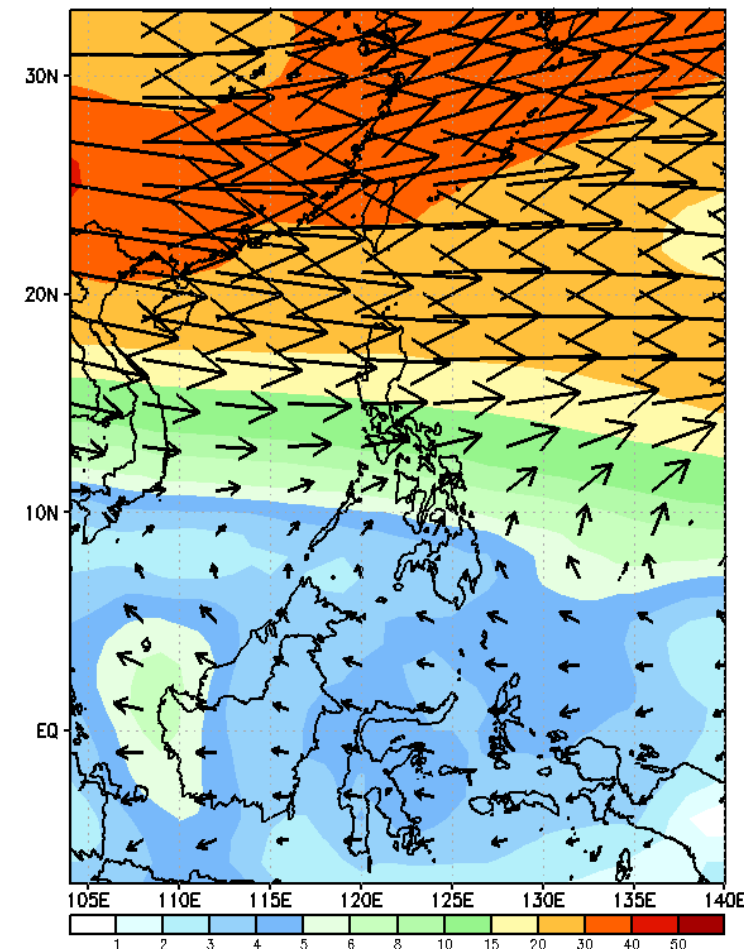
GEFS Week-1 850-hPa Wind Total
Valid: 20240422 - 20240428



GEFS Week-1 700-hPa Wind Total
Valid: 20240422 - 20240428

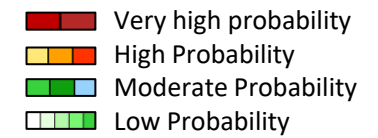


GEFS Week-1 200-hPa Wind Total
Valid: 20240422 - 20240428



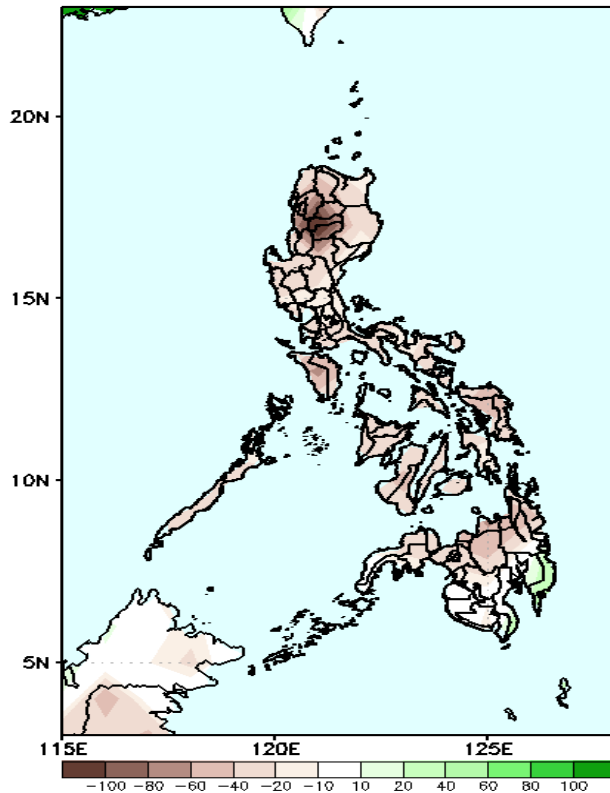
Easterlies continuously affect most parts of the country. Expect dry and warm days during the forecast period.

Precipitation Anomaly and Exceedance Probability > 25/50 mm



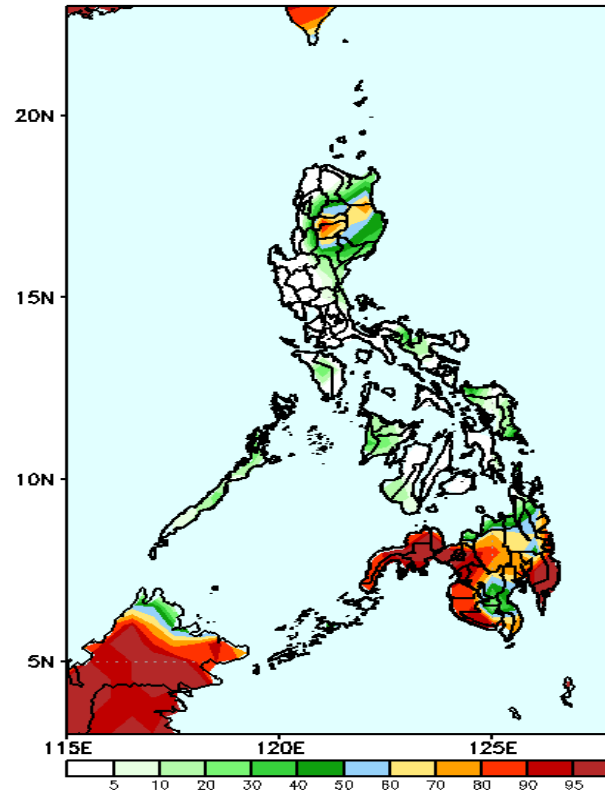
Week 1: April 22 - 28, 2024

GEFS Week-1 Precip Anomaly
Valid: 20240422 - 20240428



Rainfall deficit of 40-80mm in CAR; 20-60mm in most parts of the country while an increase of 20-40mm of rainfall will be likely over most of Davao Region.

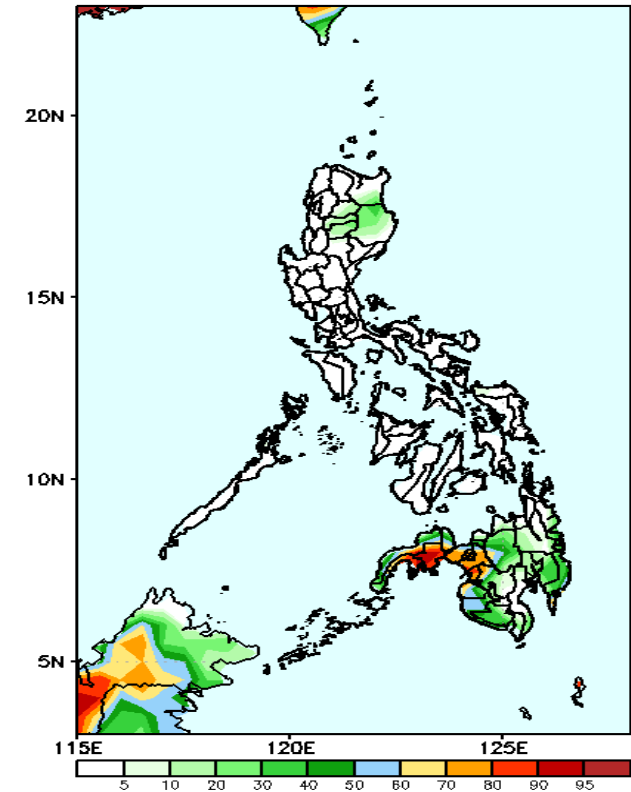
GEFS Week-1 Exceedance Prob. > 25mm
Valid: 20240422 - 20240428



Probability to Exceed 25mm

- High to very high over Western Mindanao, Davao de Oro and Davao Oriental;
- Moderate to high over Mountain Province, Ifugao, Nueva Vizcaya, Isabela, southern Cagayan and the rest of Mindanao;
- Low to moderate over the rest of Luzon and Visayas.

GEFS Week-1 Exceedance Prob. > 50mm
Valid: 20240422 - 20240428



Probability to Exceed 50mm

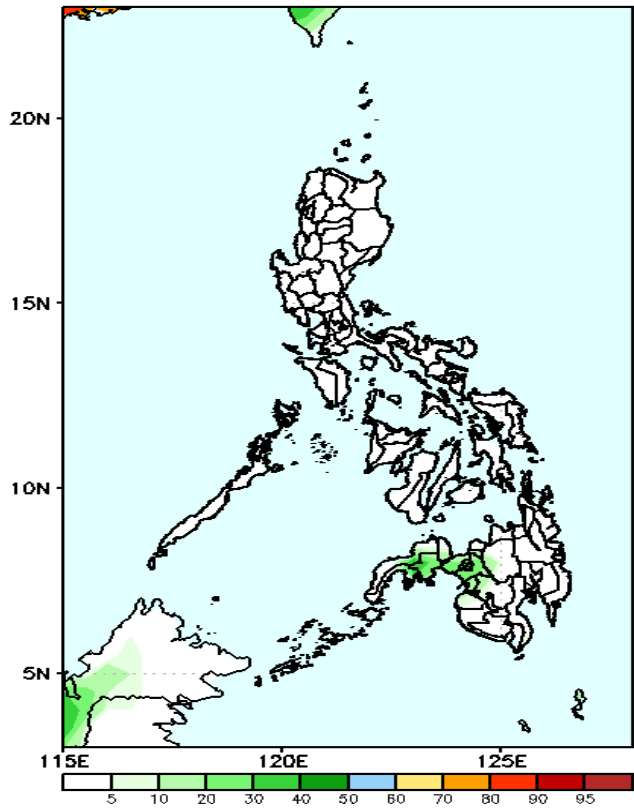
- Moderate to high over Lanao provinces, and most of Zamboanga Peninsula;
- Low to moderate over the rest of Mindanao;
- Low over the rest of the country.

Exceedance Probability > 100/150/200 mm

Week 1: April 22 - 28, 2024

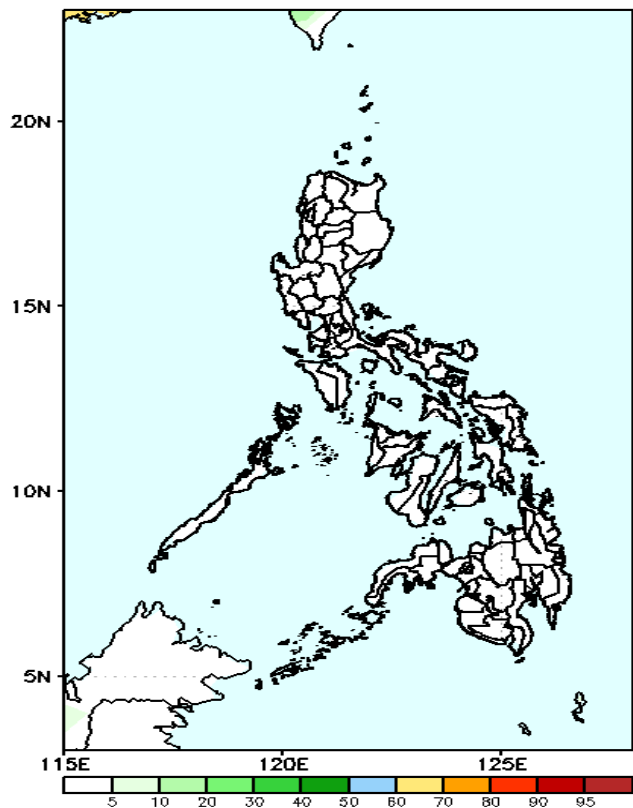
- Very high probability
- High Probability
- Moderate Probability
- Low Probability

GEFS Week-1 Exceedance Prob. > 100mm
Valid: 20240422 - 20240428



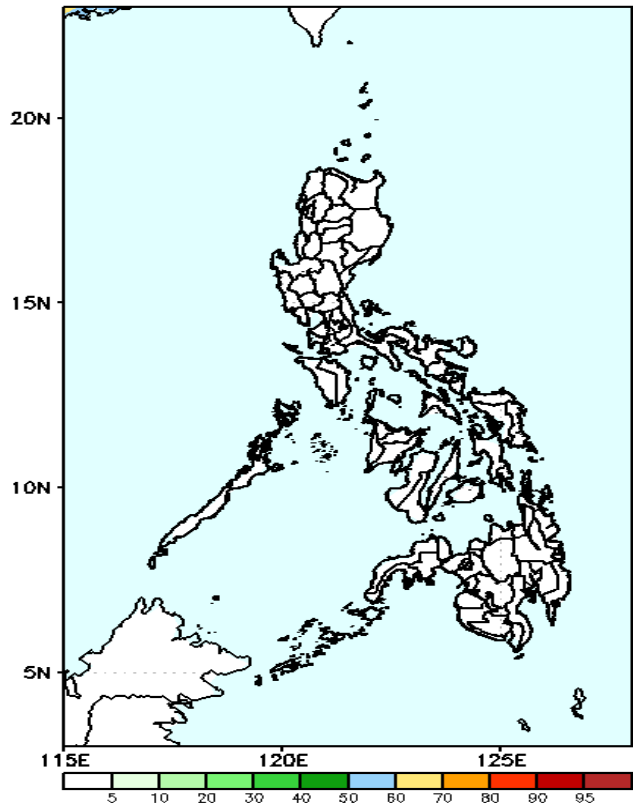
Probability to Exceed 100mm
• Low across the country.

GEFS Week-1 Exceedance Prob. > 150mm
Valid: 20240422 - 20240428



Probability to Exceed 150mm
• Low across the country.

GEFS Week-1 Exceedance Prob. > 200mm
Valid: 20240422 - 20240428

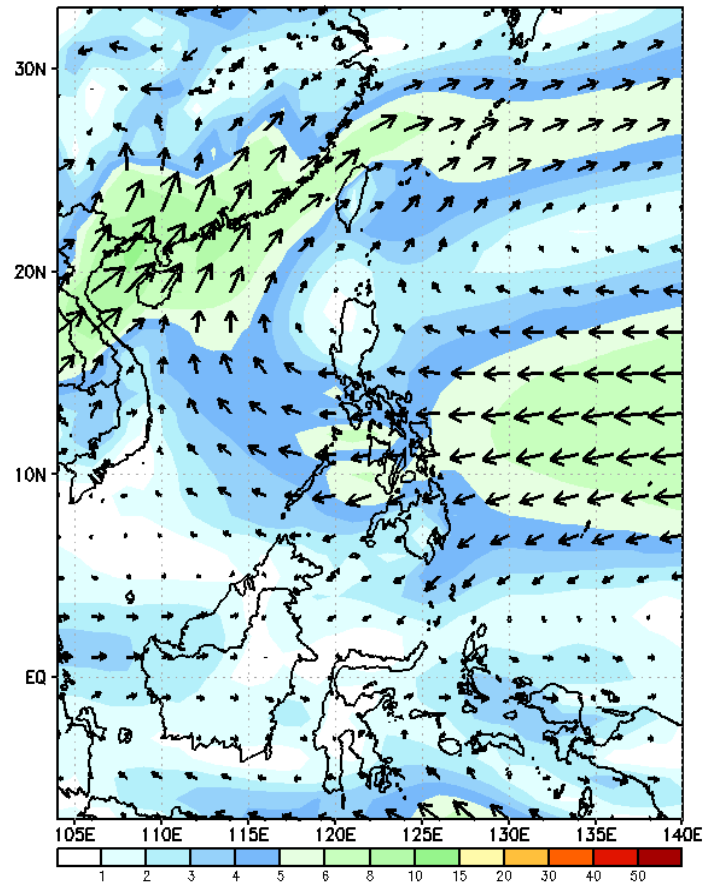


Probability to Exceed 200mm
• Low across the country.

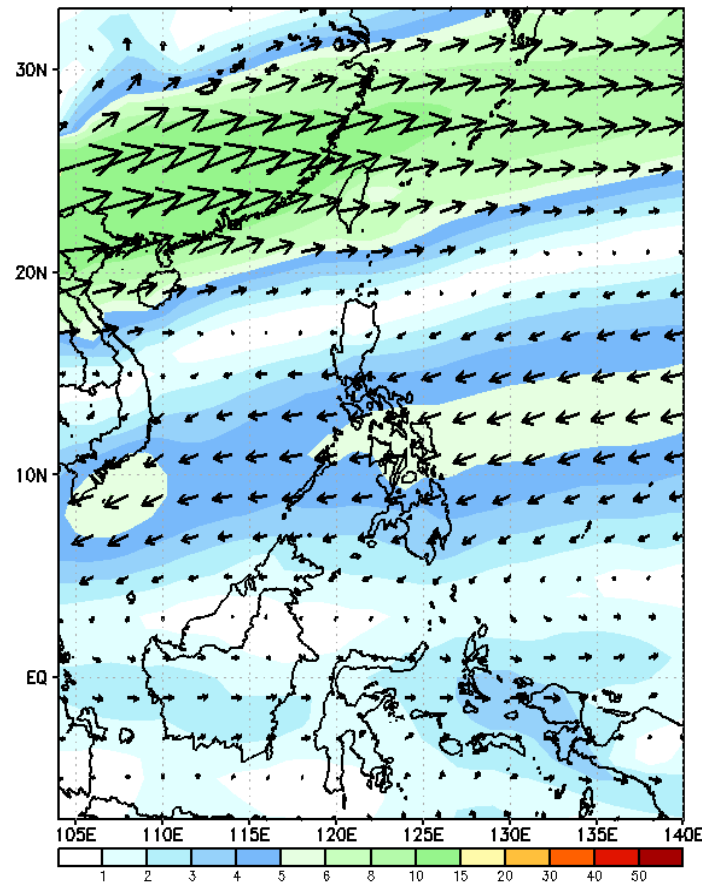
GEFS Week-2 Wind Forecasts:

Week 2: Apr 29 – May 05, 2024

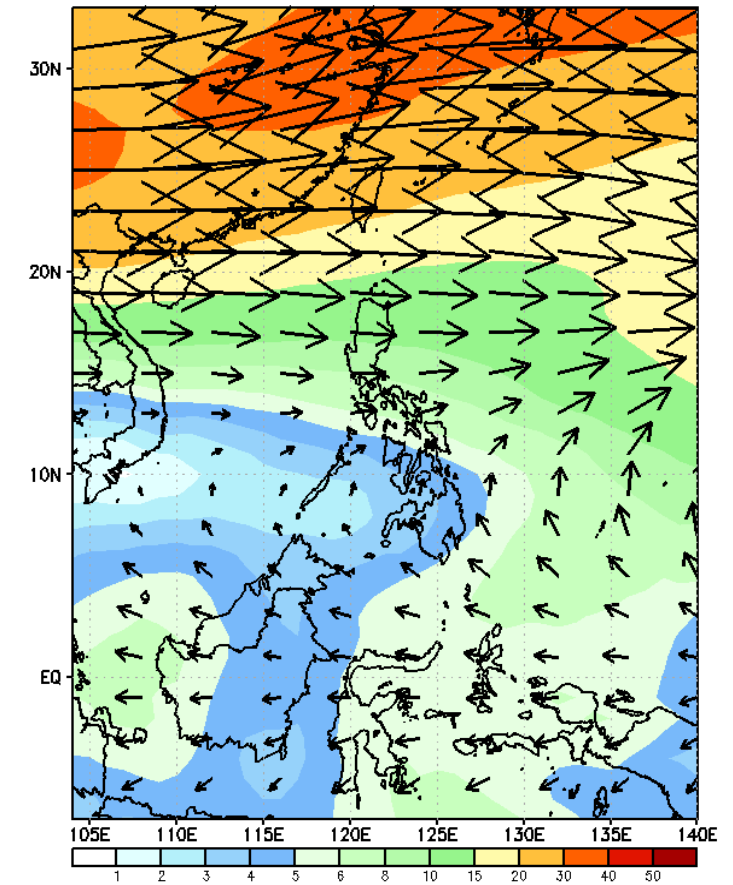
GEFS Week-2 850-hPa Wind Total
Valid: 20240429 – 20240505



GEFS Week-2 700-hPa Wind Total
Valid: 20240429 – 20240505



GEFS Week-2 200-hPa Wind Total
Valid: 20240429 – 20240505



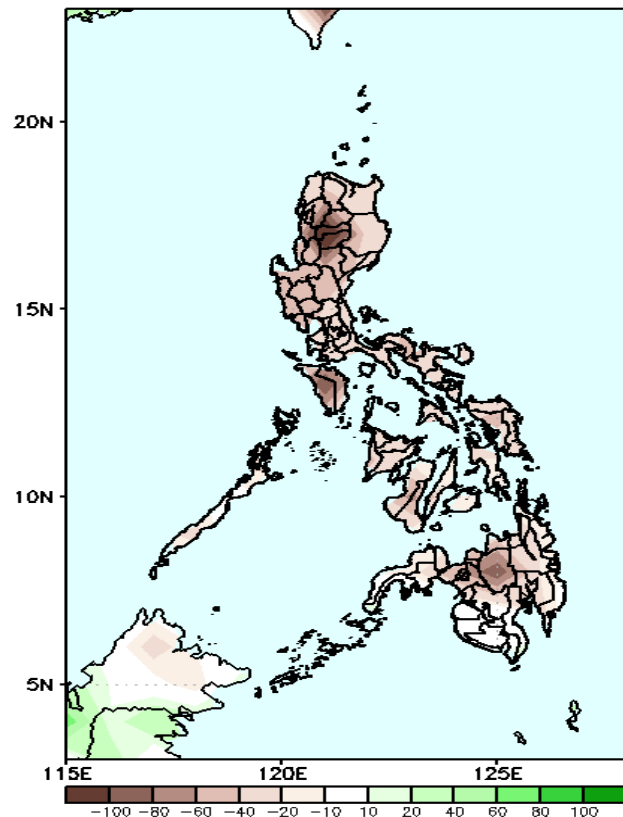
Easterlies will likely prevail in most parts of the country. Expect dry and warm days during the forecast period.

Precipitation Anomaly and Exceedance Probability > 25/50 mm



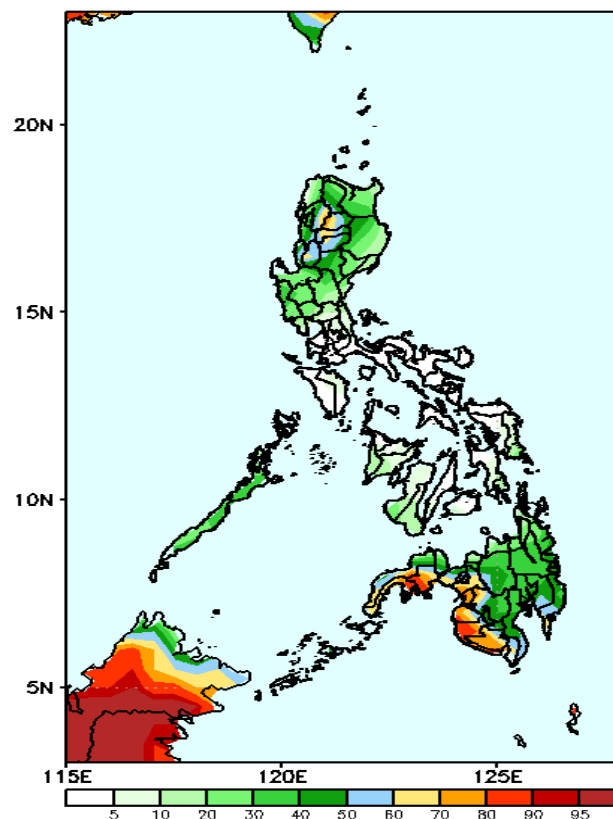
Week 2: Apr 29 – May 05, 2024

GEFS Week-2 Precip Anomaly
Valid: 20240429 – 20240505



Rainfall deficit of 40-80mm in CAR and 20-60mm in most parts of the country.

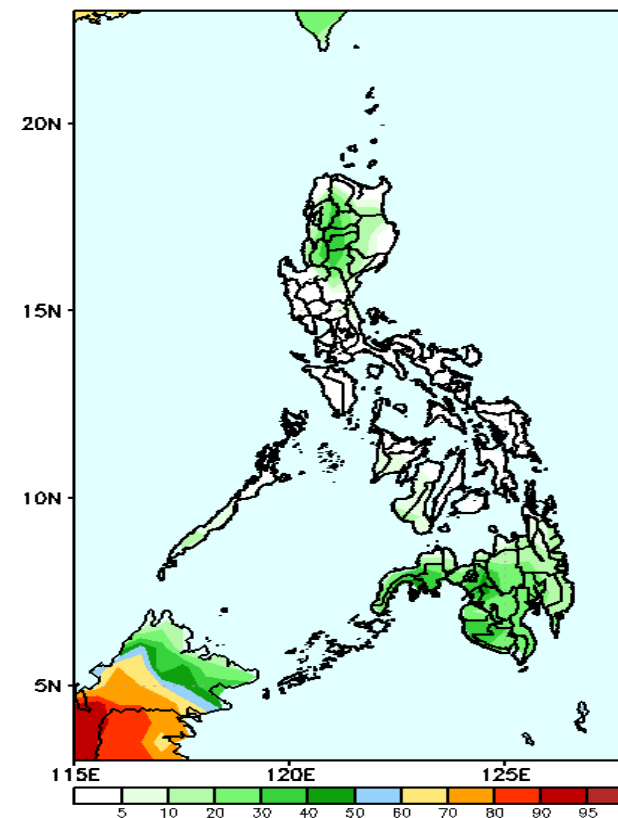
GEFS Week-2 Exceedance Prob. > 25mm
Valid: 20240429 – 20240505



Probability to Exceed 25mm

- Moderate to high over most of CAR and Mindanao;
- Low to moderate over the rest of the country.

GEFS Week-2 Exceedance Prob. > 50mm
Valid: 20240429 – 20240505



Probability to Exceed 50mm

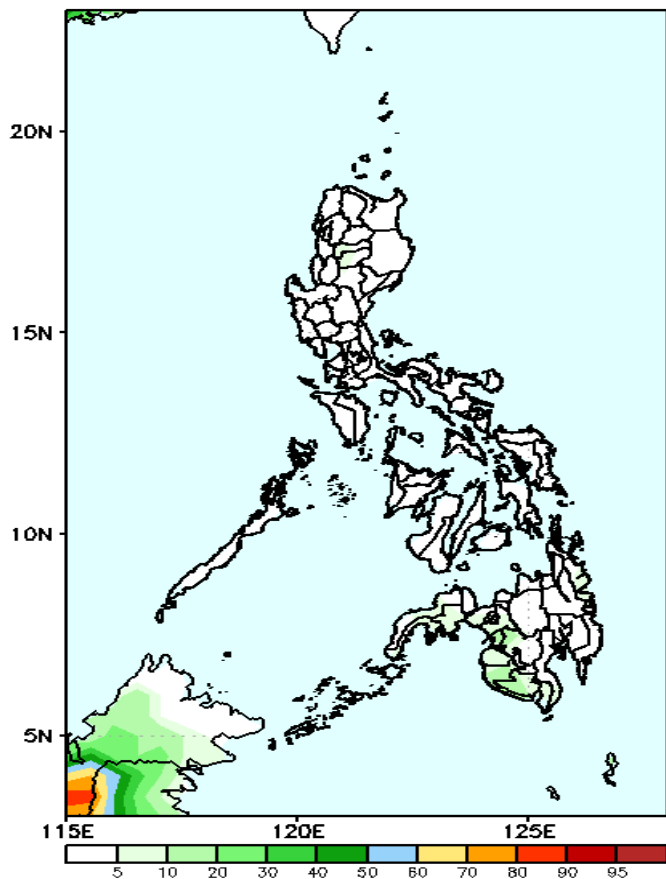
- Low to moderate over Northern Luzon and Mindanao;
- Low over the rest of the country.

Exceedance Probability > 100/150/200 mm

Week 2: Apr 29 – May 05, 2024

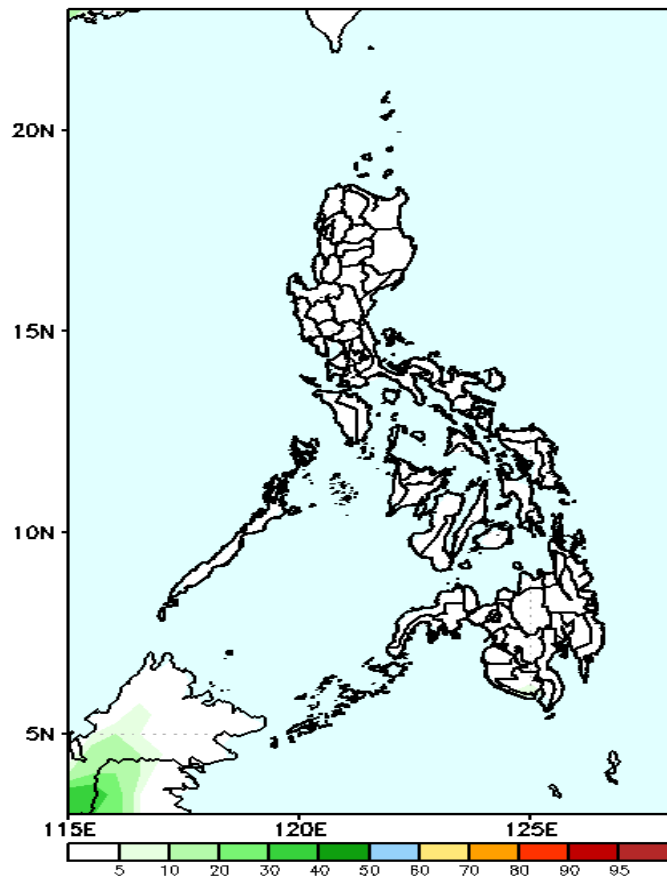
- Very high probability
- High Probability
- Moderate Probability
- Low Probability

GEFS Week-2 Exceedance Prob. > 100mm
Valid: 20240429 – 20240505



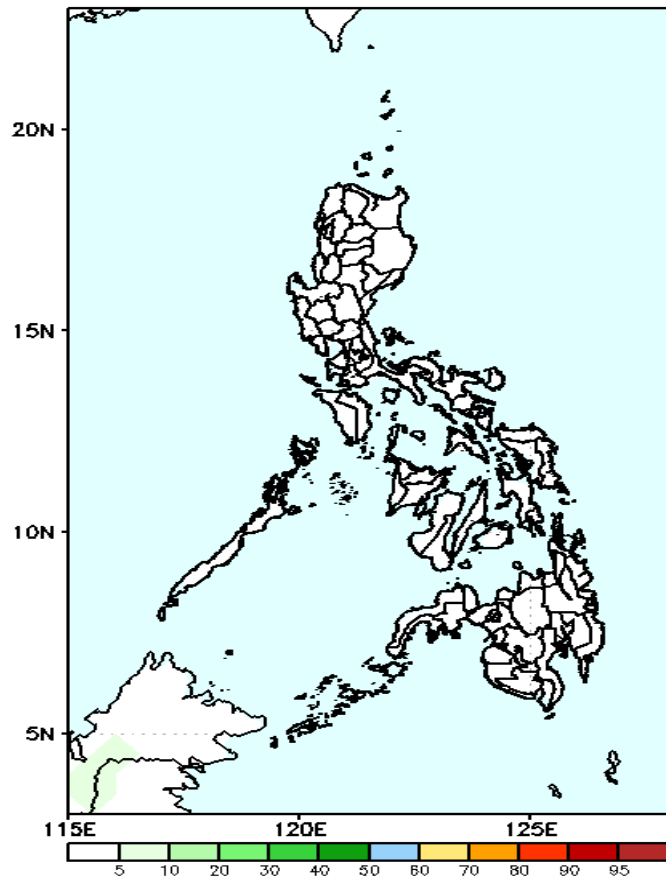
Probability to Exceed 100mm
• Low across the country.

GEFS Week-2 Exceedance Prob. > 150mm
Valid: 20240429 – 20240505



Probability to Exceed 150mm
• Low across the country.

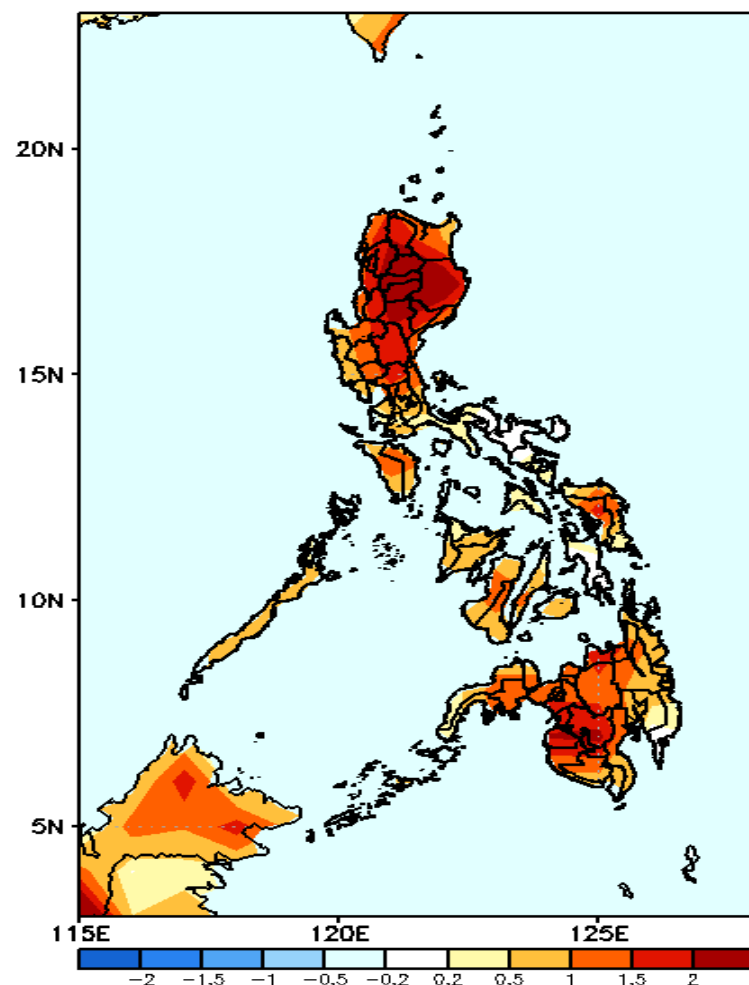
GEFS Week-2 Exceedance Prob. > 200mm
Valid: 20240429 – 20240505



Probability to Exceed 200mm
• Low across the country.

GEFS Week-1 & 2 Forecasts: T2m Anomaly

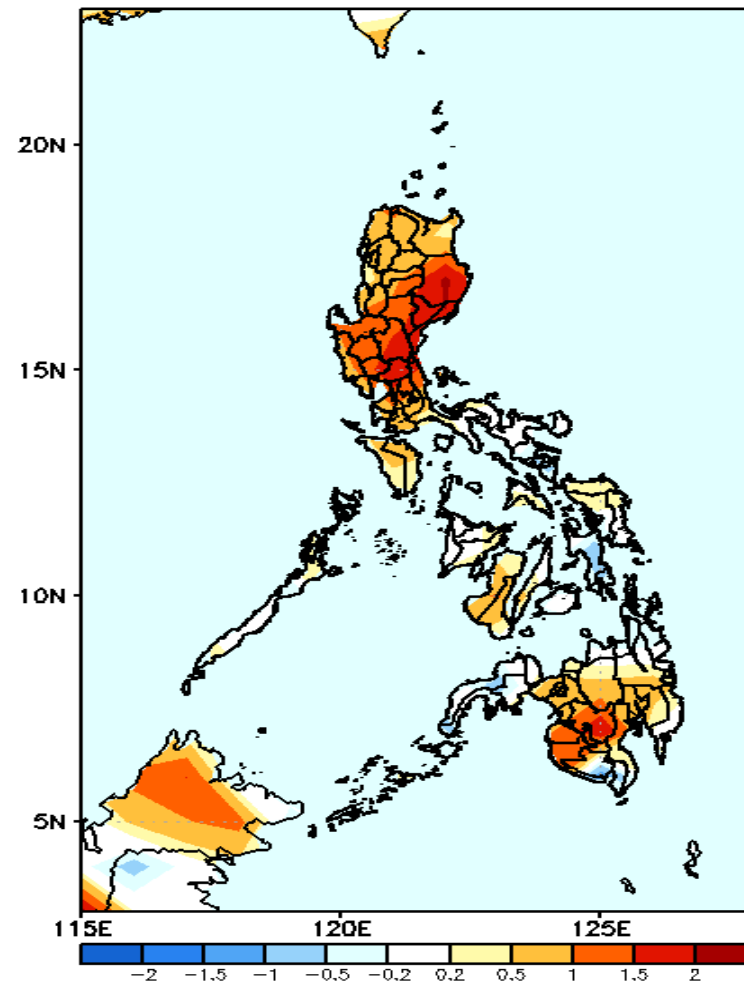
GEFS Week-1 T2m Anomaly
Valid: 20240422 - 20240428



2m Temperature Week 1: April 22 - 28, 2024

Slightly warmer to warmer than average surface air temperature will likely be experienced in most parts of the country.

GEFS Week-2 T2m Anomaly
Valid: 20240429 - 20240505



2m Temperature Week 2: Apr 29 – May 05, 2024

Slightly warmer to warmer than average surface air temperature will likely be experienced in most parts of the country except Leyte provinces and Zamboanga Peninsula were near to slightly cooler than average surface air temperature is likely.