



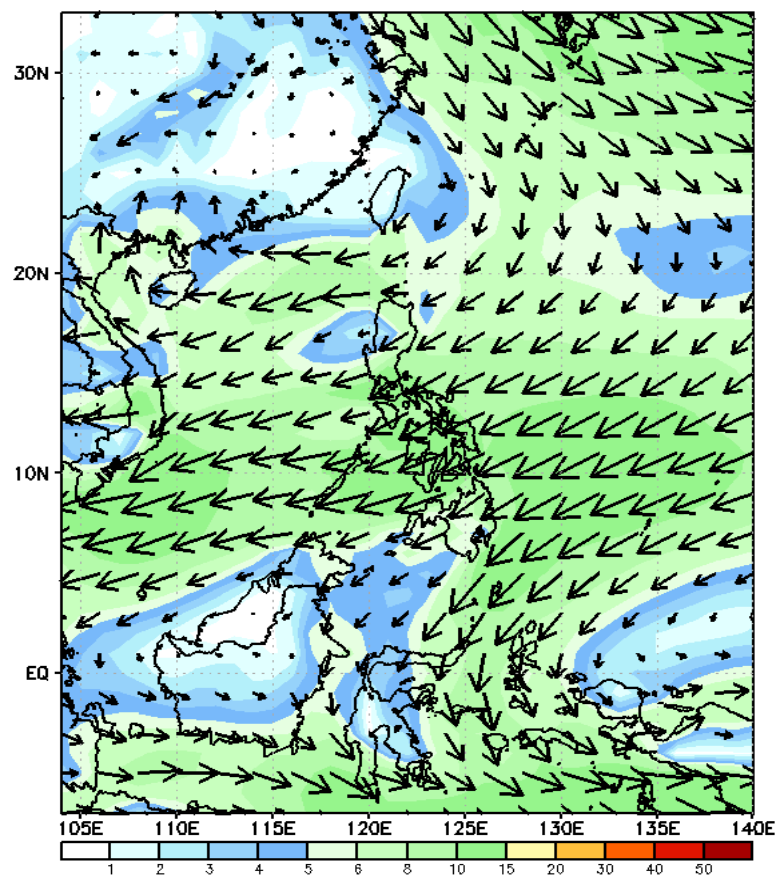
Week 1 & Week 2 Forecast for the Philippines using GEFS Model



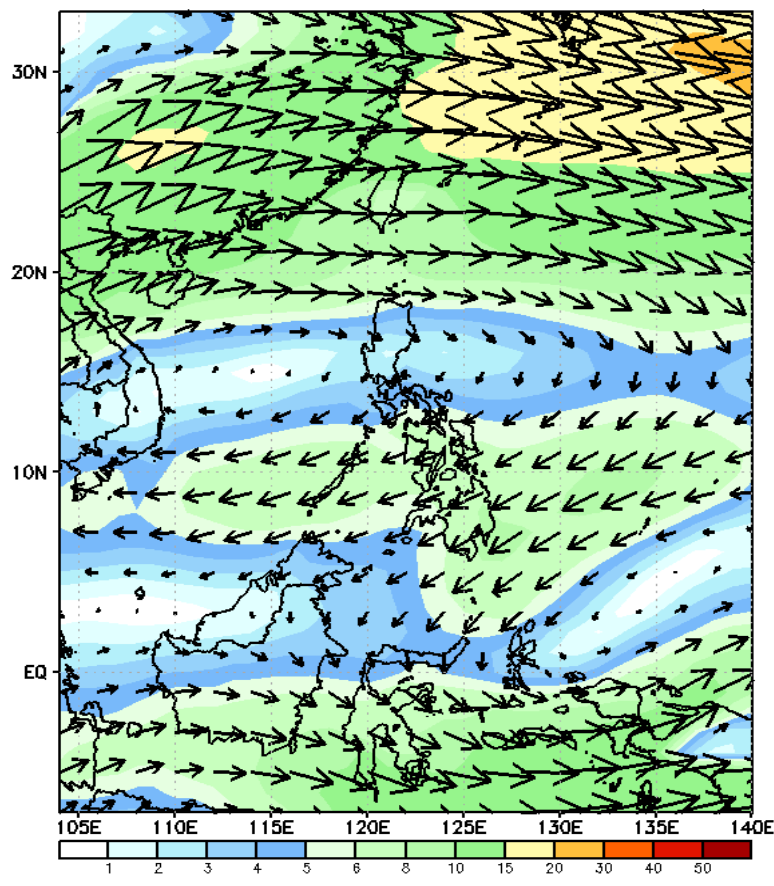
GEFS Week-1 Forecasts: Wind Forecast

Week 1: January 22-28, 2024

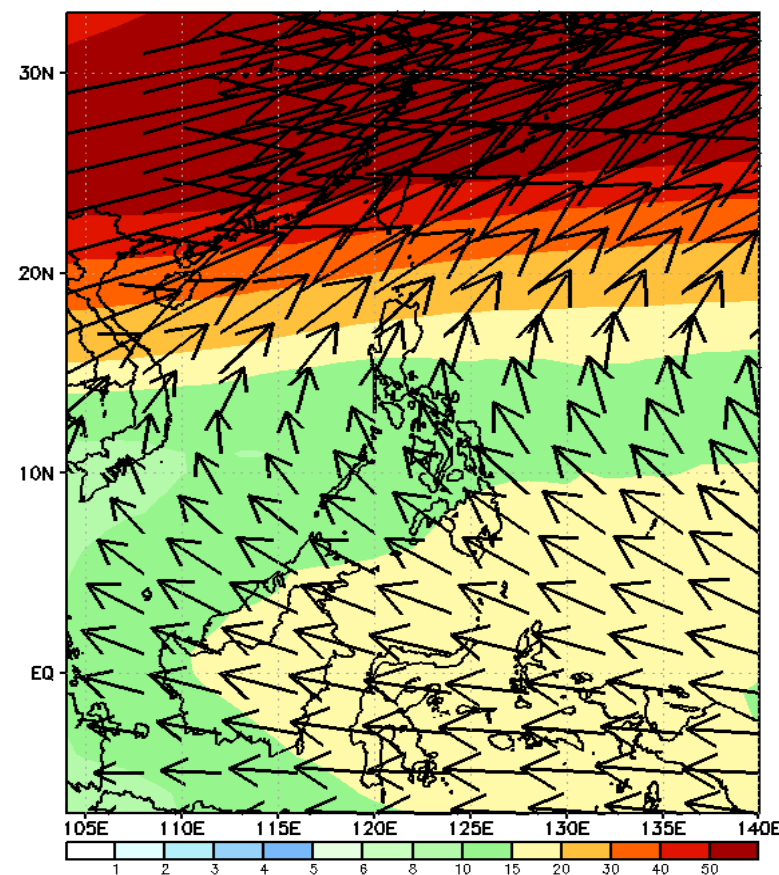
GEFS Week-1 850-hPa Wind Total
Valid: 20240122 - 20240128



GEFS Week-1 700-hPa Wind Total
Valid: 20240122 - 20240128

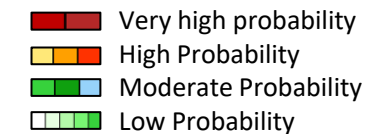


GEFS Week-1 200-hPa Wind Total
Valid: 20240122 - 20240128



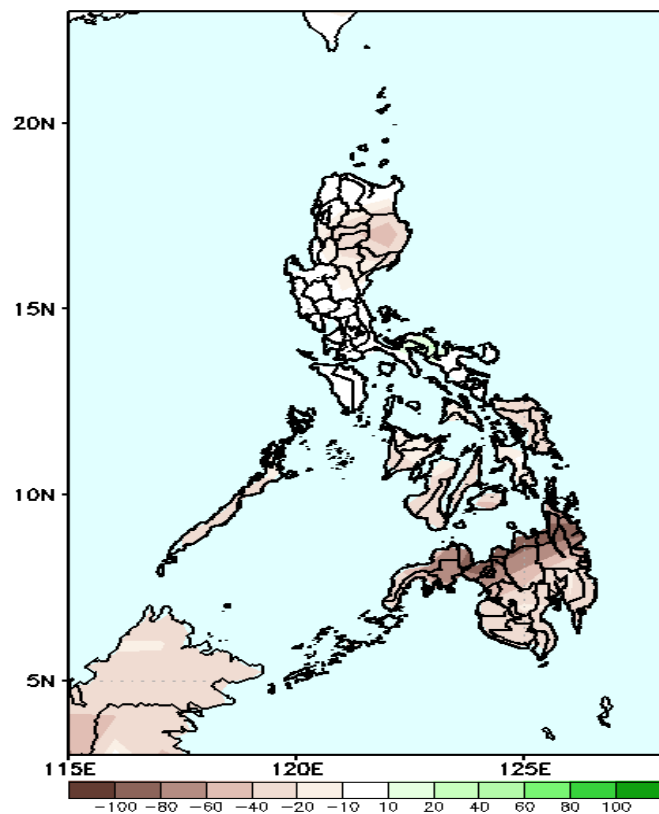
Northeast Monsoon will likely affect eastern sections of Luzon and Visayas, Easterlies affecting Mindanao.

Precipitation Anomaly and Exceedance Probability > 25/50 mm



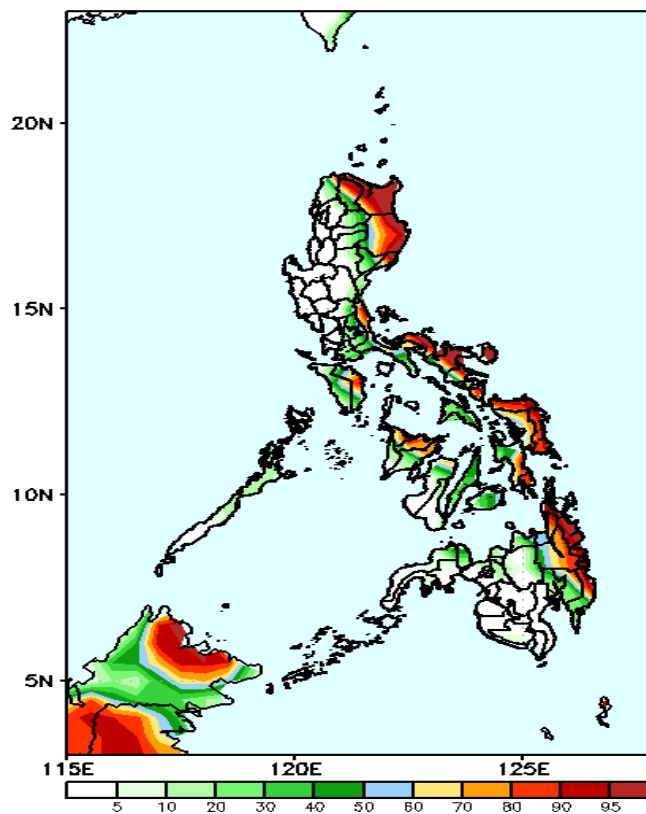
Week 1: January 22-28, 2024

GEFS Week-1 Precip. Anomaly
Valid: 20240122 - 20240128



Rainfall deficit of 40-60mm in most parts of the country. Moreover, a deficit of more than 100mm is forecasted in Northern Mindanao.

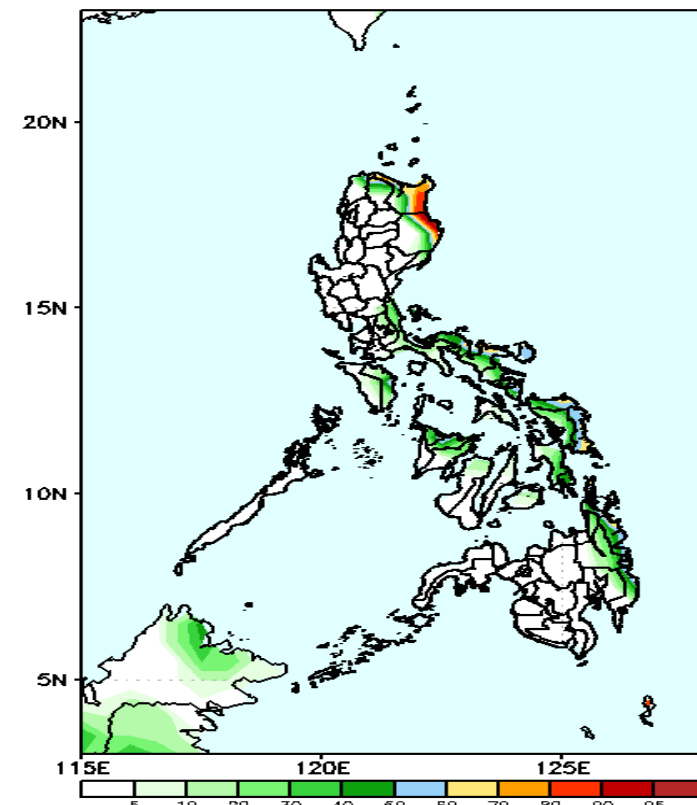
GEFS Week-1 Exceedance Prob. > 25mm
Valid: 20240122 - 20240128



Probability to Exceed 25mm

- High to very high over portions of Apayao, Cagayan, the eastern portions of Isabela and Bicol region, Eastern and Northern Samar and Surigao provinces;
- Moderate to high over the rest of Apayao, Isabela, Bicol region and Eastern Visayas, Quezon, Mindoro Oriental, northern portion of Western Visayas and the rest of eastern Mindanao;
- Low to moderate over the rest of the country.

GEFS Week-1 Exceedance Prob. > 50mm
Valid: 20240122 - 20240128

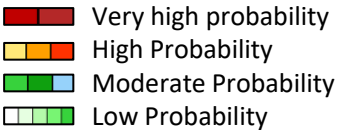


Probability to Exceed 50mm

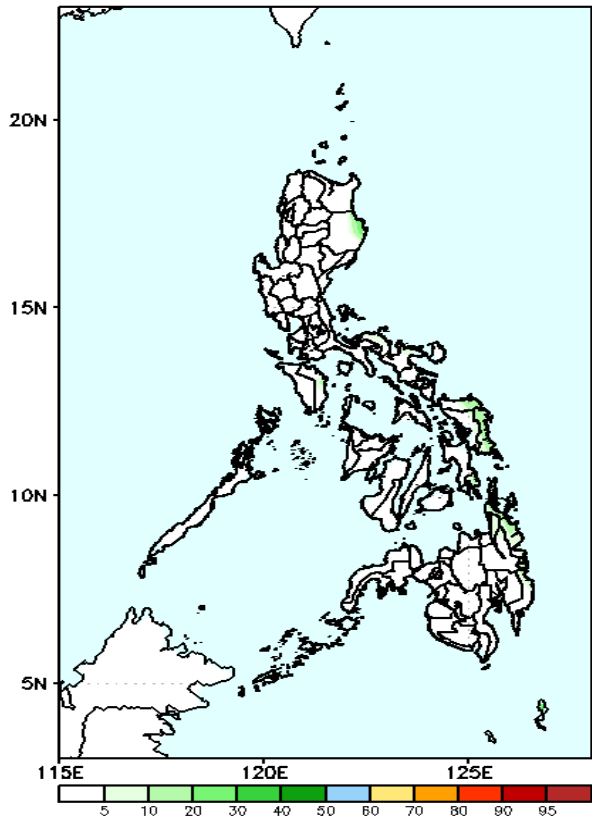
- Moderate to high over eastern portions of Cagayan, Isabela and Bicol Region, Northern and Eastern Samar and Surigao provinces;
- Low to moderate over the rest Bicol Region, Aklan, Capiz, and the rest of Eastern Visayas;
- Low over the rest of the country.

Exceedance Probability > 100/150/200 mm

Week 1: January 22-28, 2024



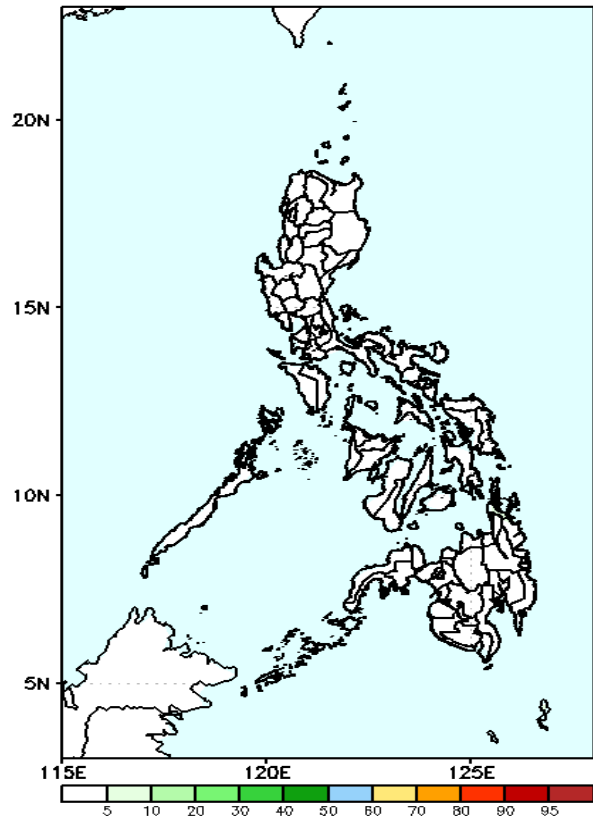
GEFS Week-1 Exceedance Prob. > 100mm
Valid: 20240122 - 20240128



Probability to Exceed 100mm

- Low across the country.

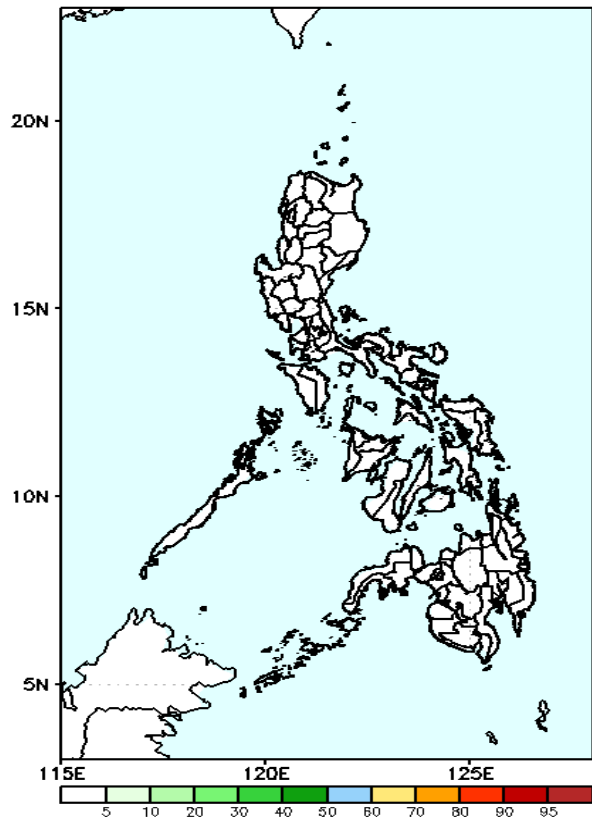
GEFS Week-1 Exceedance Prob. > 150mm
Valid: 20240122 - 20240128



Probability to Exceed 150mm

- Low across the country.

GEFS Week-1 Exceedance Prob. > 200mm
Valid: 20240122 - 20240128



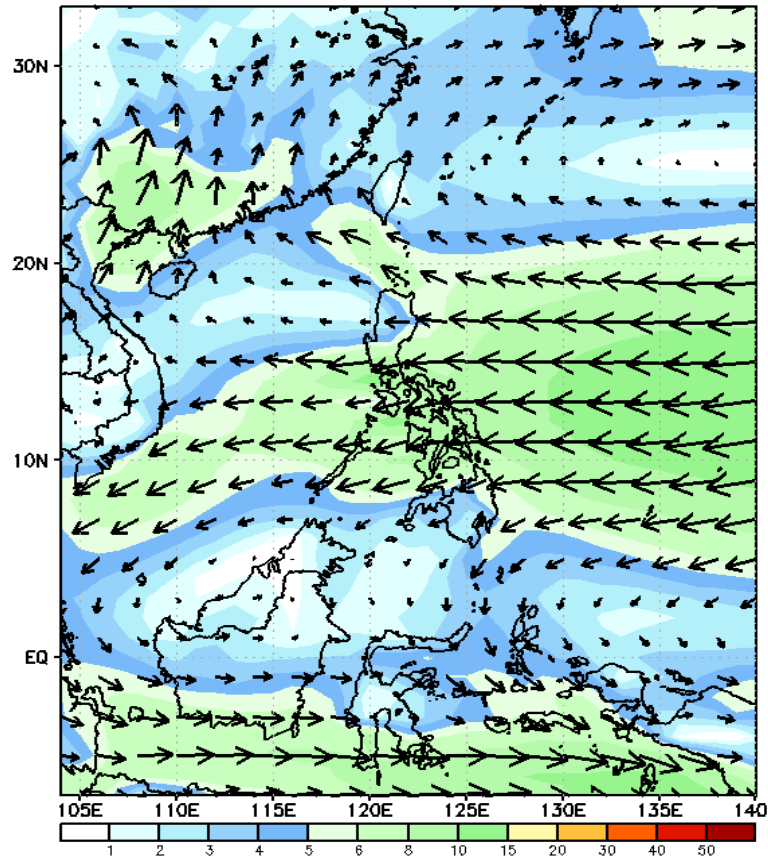
Probability to Exceed 200mm

- Low across the country.

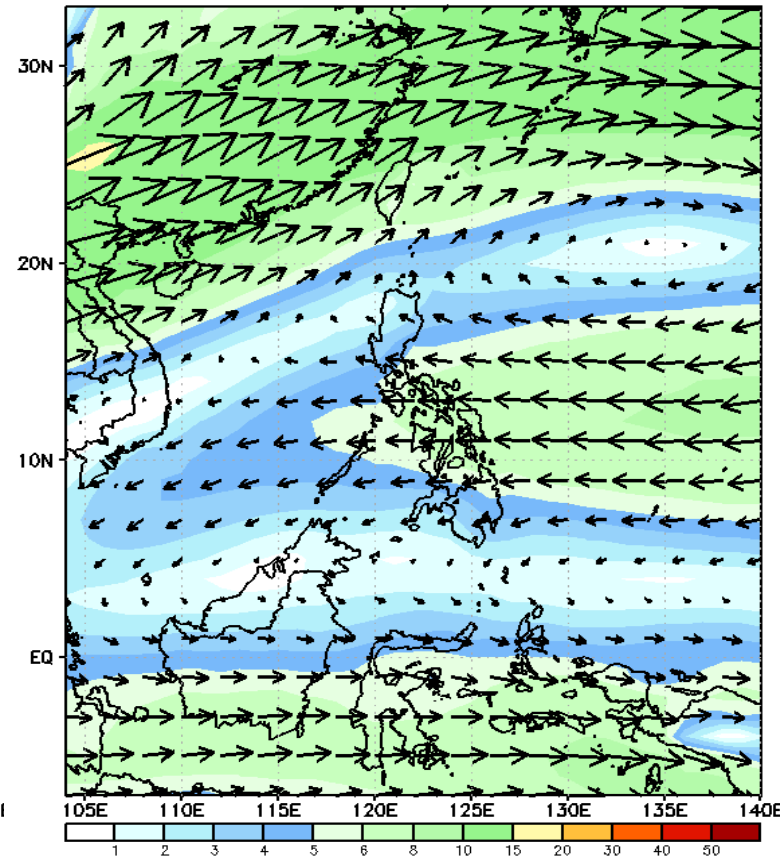
GEFS Week-2 Forecasts: Wind Forecast

Week 2: January 29- February 04, 2024

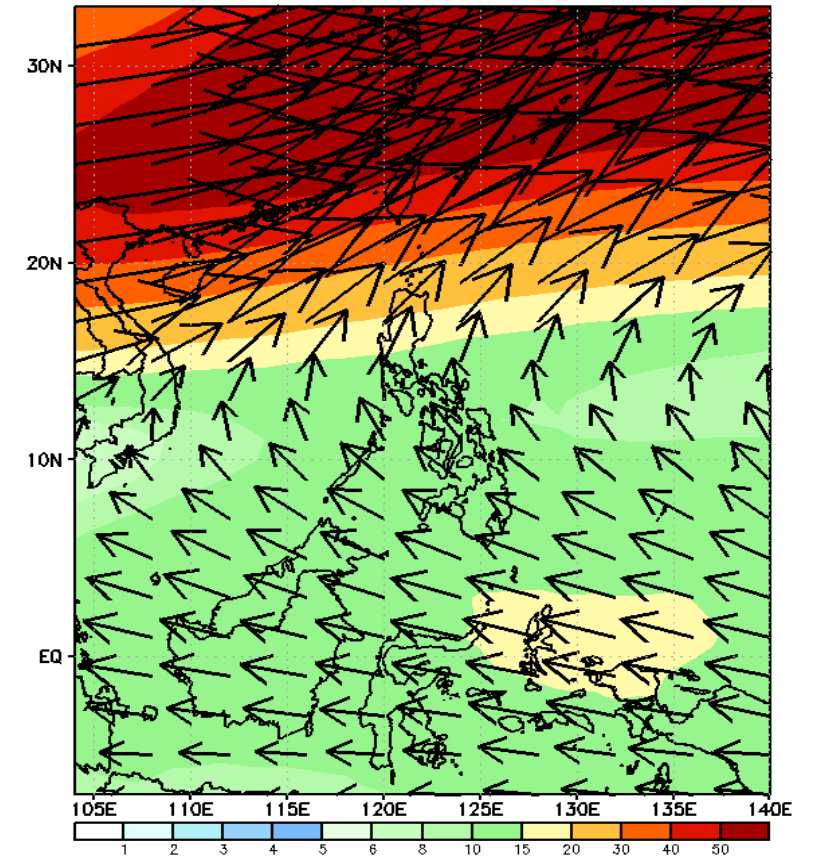
GEFS Week-2 850-hPa Wind Total
Valid: 20240129 - 20240204



GEFS Week-2 700-hPa Wind Total
Valid: 20240129 - 20240204



GEFS Week-2 200-hPa Wind Total
Valid: 20240129 - 20240204



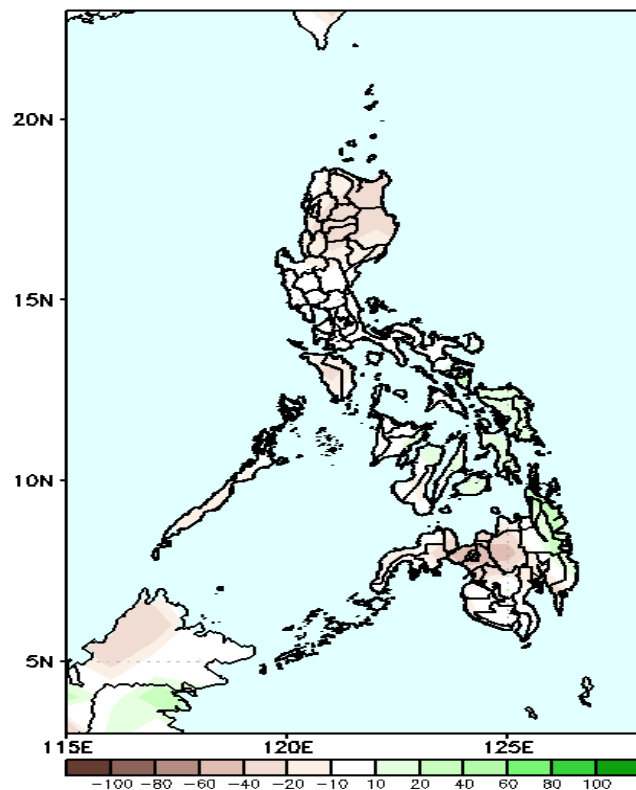
Northeast Monsoon affecting Extreme Northern Luzon; Easterlies affecting the rest of the country.

Precipitation Anomaly and Exceedance Probability > 25/50 mm



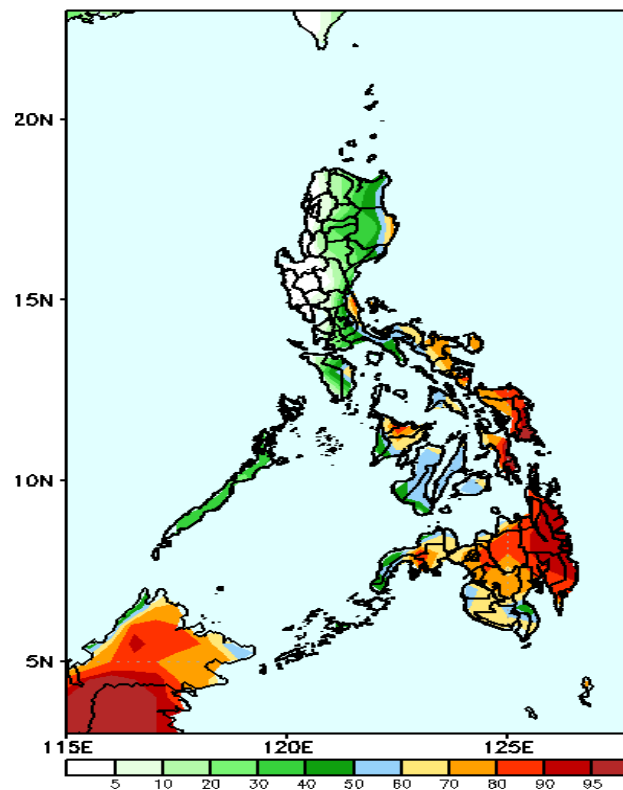
Week 2: January 29- February 04, 2024

GEFS Week-2 Precip Anomaly
Valid: 20240129 - 20240204



Rainfall deficit of 20-60mm in most parts of the country.

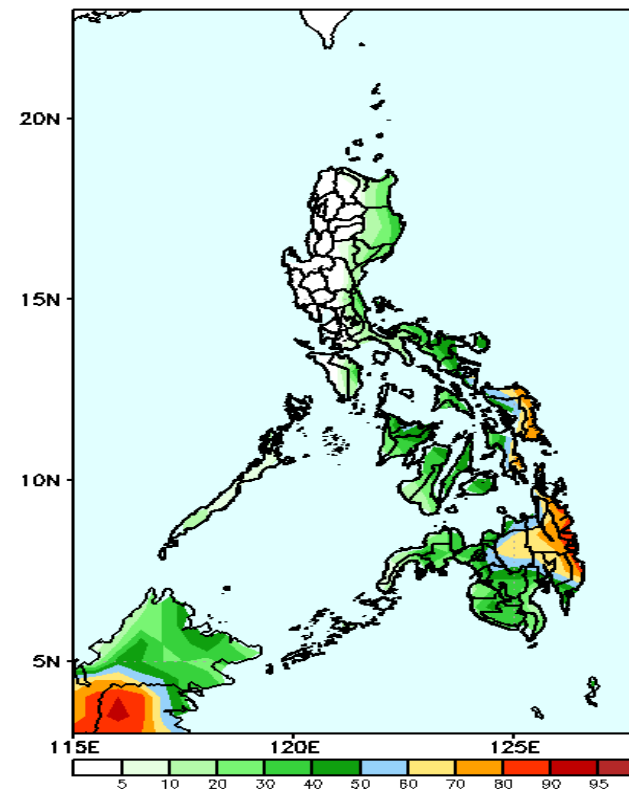
GEFS Week-2 Exceedance Prob. > 25mm
Valid: 20240129 - 20240204



Probability to Exceed 25mm

- High to very high over Eastern Visayas and Eastern Mindanao;
- Moderate to high over the eastern portion of Isabela and Cagayan, Quezon, Bicol Region, Mindoro Oriental and the rest of Visayas and Mindanao;
- Low to moderate over the rest of Luzon.

GEFS Week-2 Exceedance Prob. > 50mm
Valid: 20240129 - 20240204

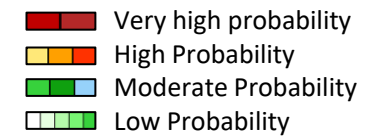


Probability to Exceed 50mm

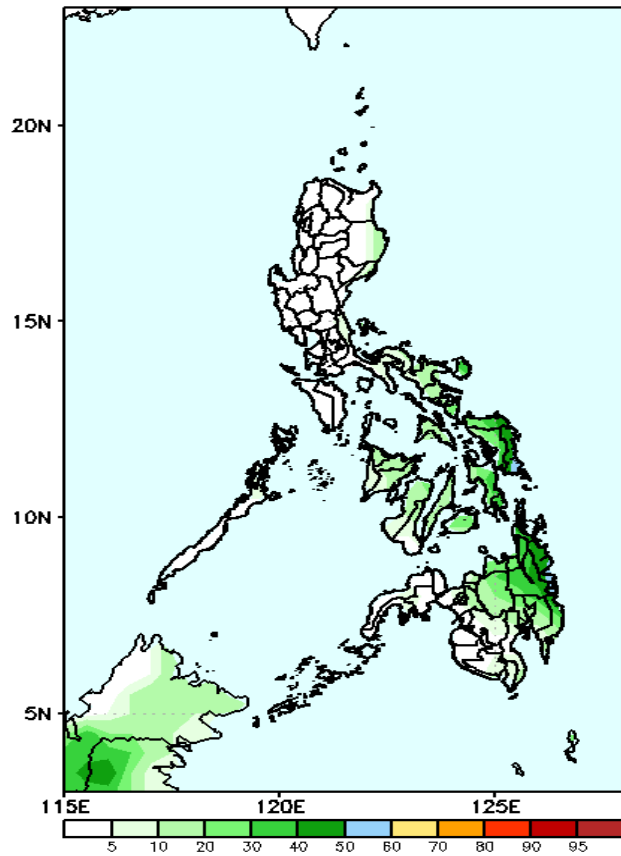
- Moderate to high over Eastern Visayas and Eastern Mindanao;
- Low to moderate over Bicol Region and the rest of Visayas and Mindanao;
- Low elsewhere.

Exceedance Probability > 100/150/200 mm

Week 2: January 29- February 04, 2024



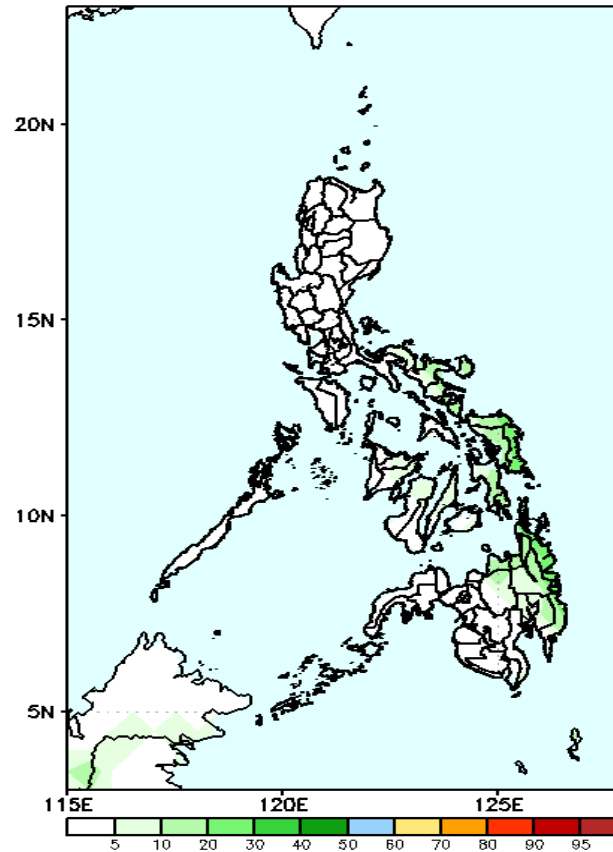
GEFS Week-2 Exceedance Prob. > 100mm
Valid: 20240129 - 20240204



Probability to Exceed 100mm

- Low to moderate over eastern Visayas and Eastern Mindanao
- Low over the rest of the country.

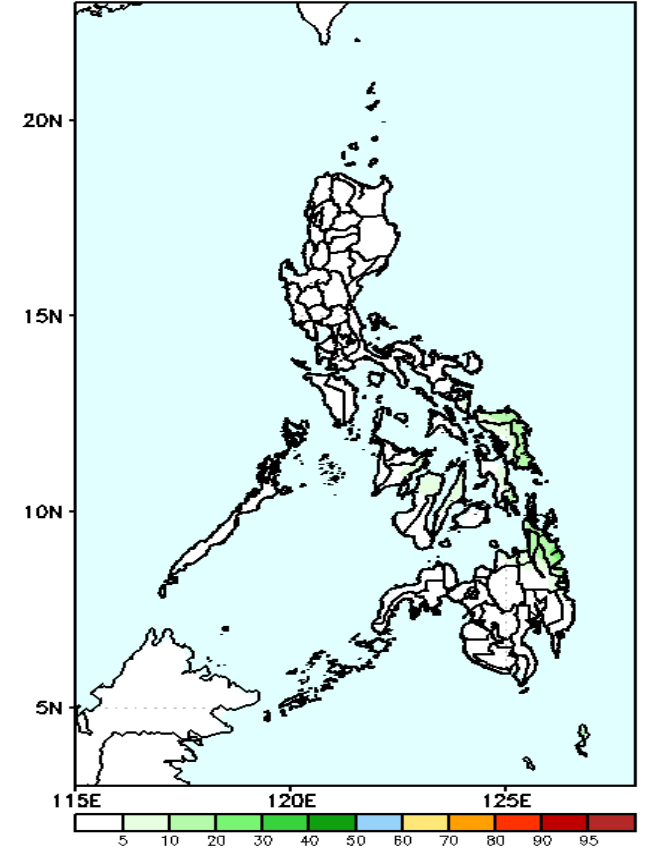
GEFS Week-2 Exceedance Prob. > 150mm
Valid: 20240129 - 20240204



Probability to Exceed 150mm

- Low across the country.

GEFS Week-2 Exceedance Prob. > 200mm
Valid: 20240129 - 20240204

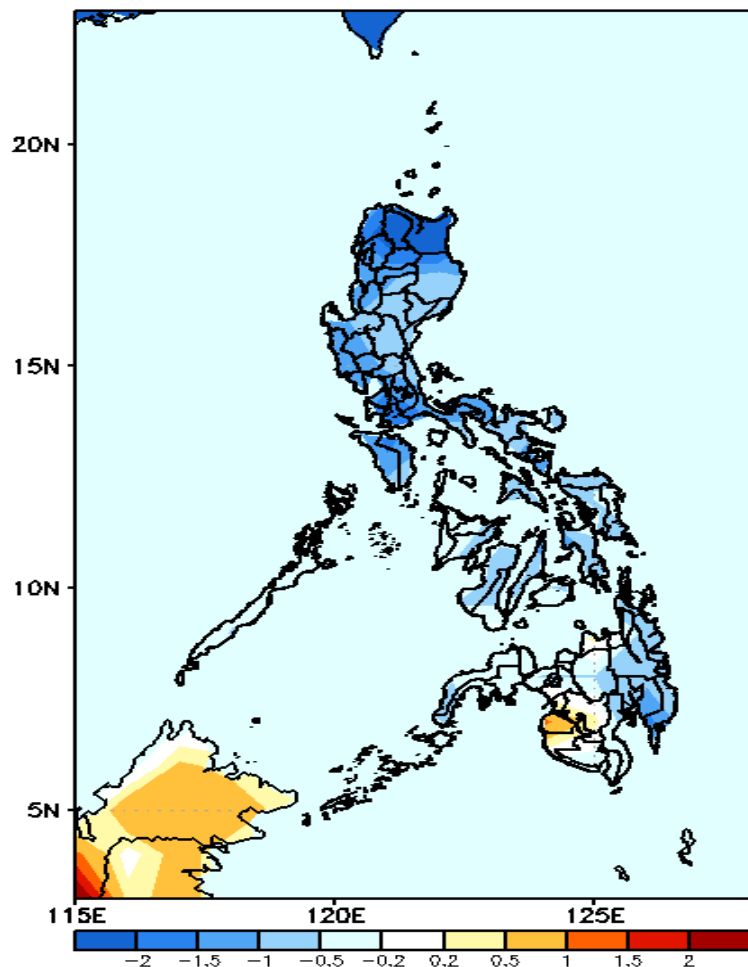


Probability to Exceed 200mm

- Low across the country.

GEFS Week-1 & 2 Forecasts: T2m Anomaly

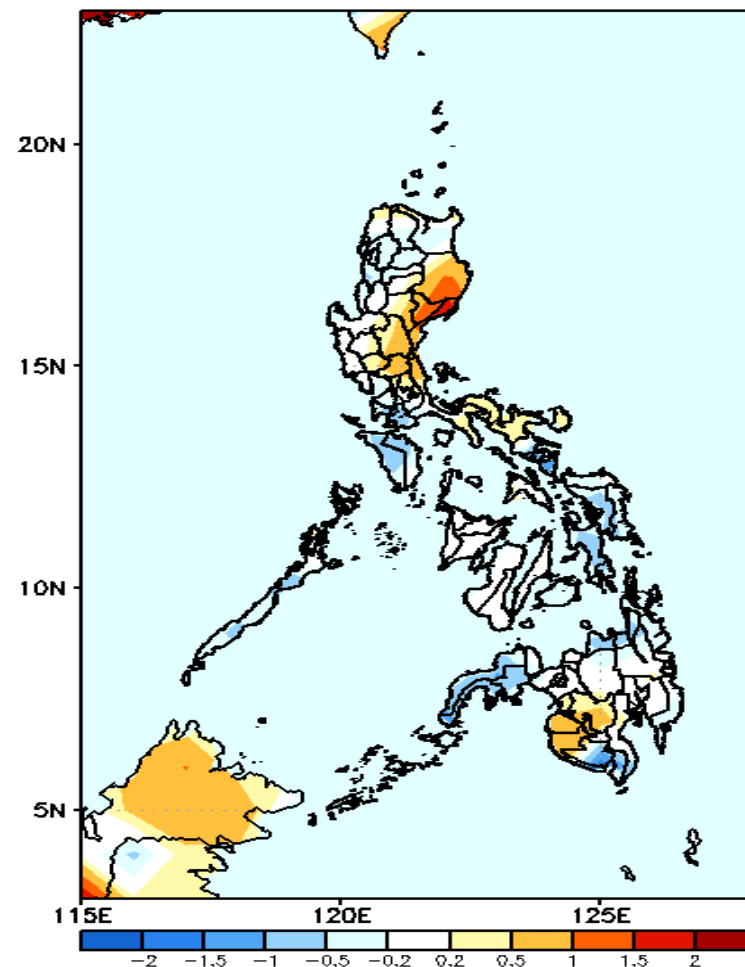
GEFS Week-1 T2m Anomaly
Valid: 20240122 — 20240128



2m Temperature Week 1: January 22-28, 2024

Near to cooler than average surface air temperature average will likely be experienced in most parts country except in Maguindanao where slightly warmer than average temperature is expected.

GEFS Week-2 T2m Anomaly
Valid: 20240129 — 20240204



2m Temperature Week 2: January 29- February 04, 2024

Near to slightly cooler than average surface air temperature will likely be experienced in most parts of the country except in most areas in eastern Luzon, North Cotabato, Maguindanao, and Sultan Kudarat where slightly warmer than average temperature is expected.