



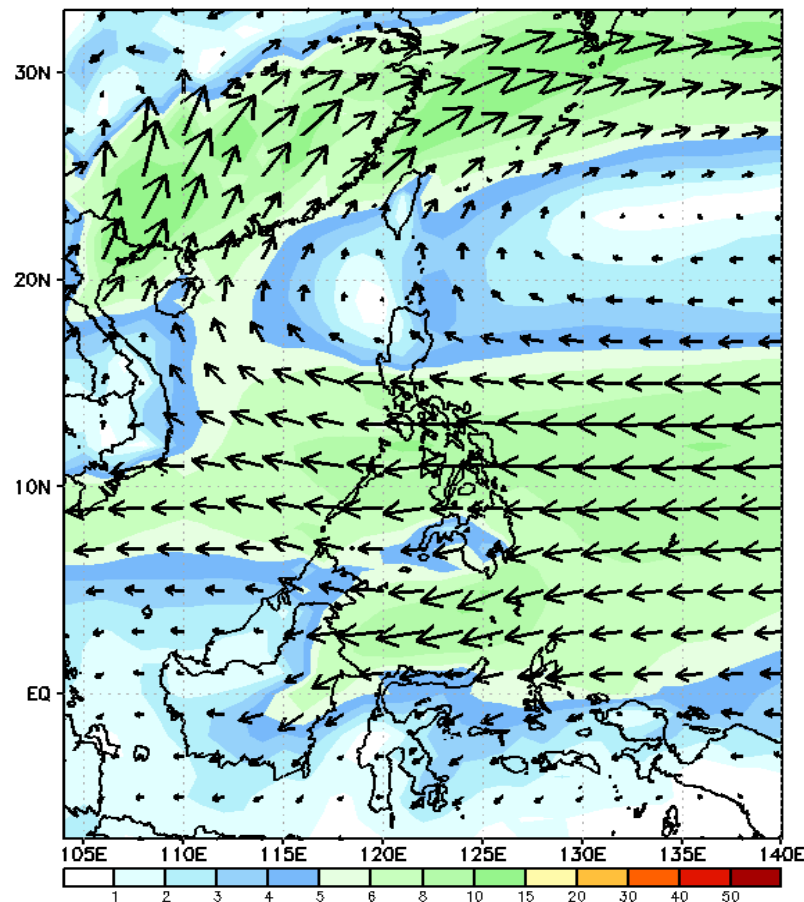
# Week 1 & Week 2 Forecast for the Philippines using GEFS Model



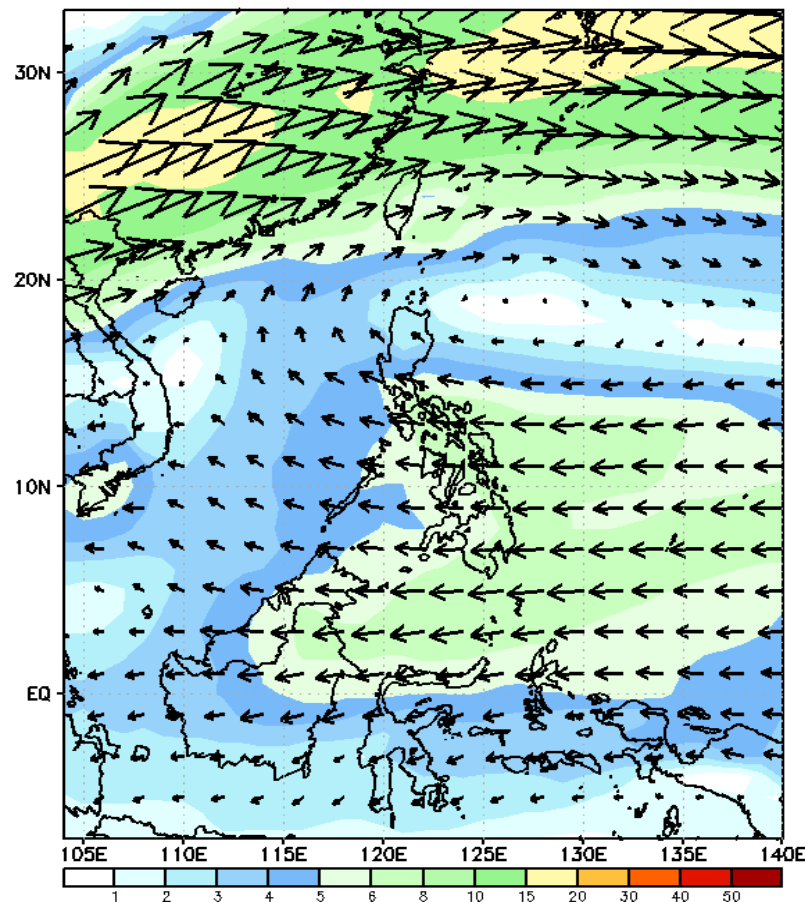
# GEFS Week-1 Forecasts: Wind Forecast

Week 1: Mar 22-28, 2024

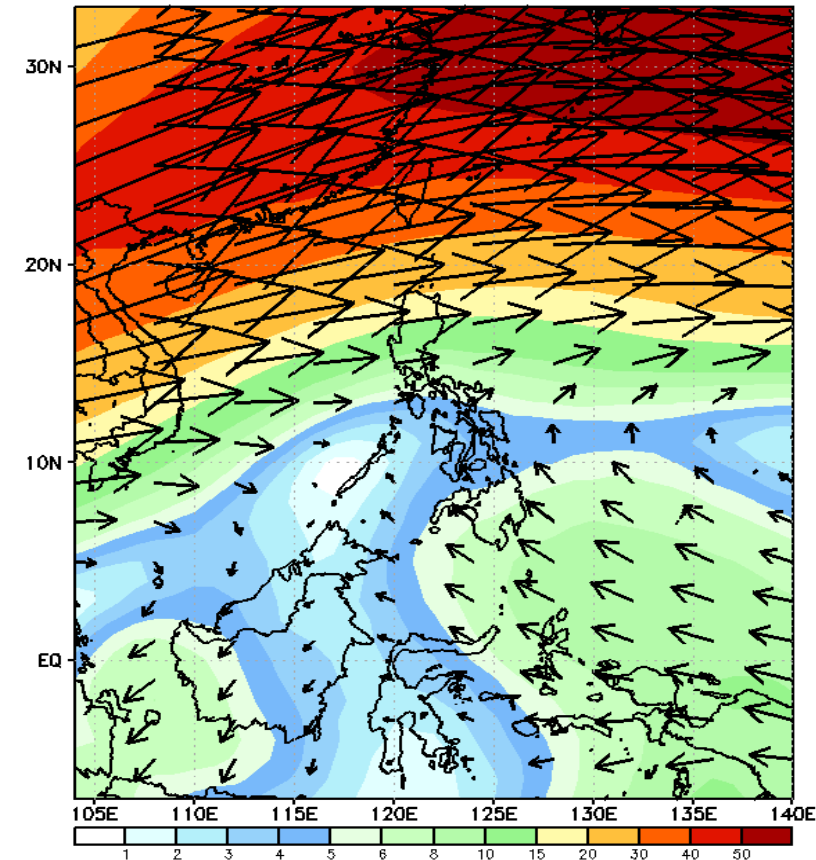
GEFS Week-1 850-hPa Wind Total  
Valid: 20240322 - 20240328



GEFS Week-1 700-hPa Wind Total  
Valid: 20240322 - 20240328

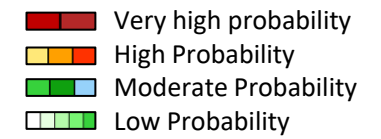


GEFS Week-1 200-hPa Wind Total  
Valid: 20240322 - 20240328



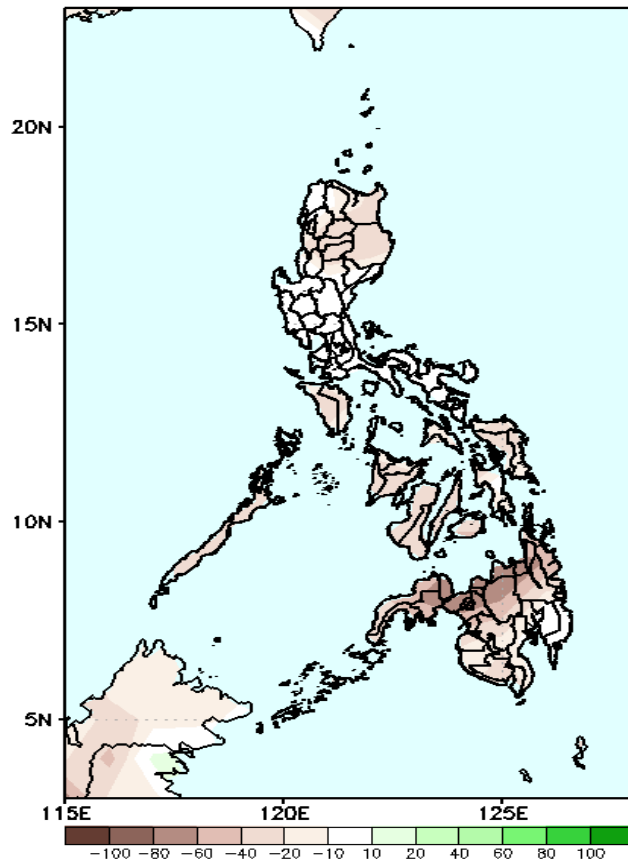
Easterlies will likely affect most parts of the country. Expect dry and warm days during the forecast period.

# Precipitation Anomaly and Exceedance Probability > 25/50 mm



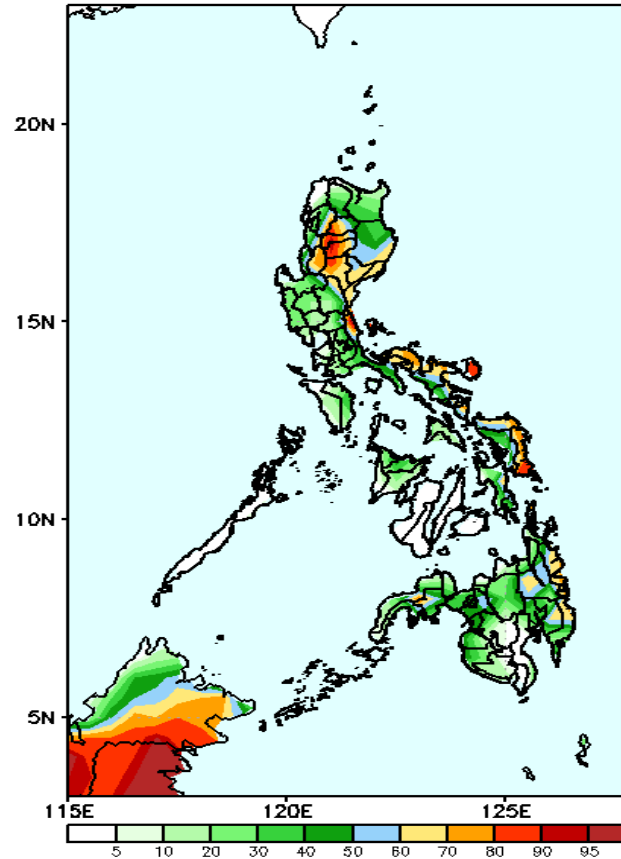
Week 1: Mar 22-28, 2024

GEFS Week-1 Precip Anomaly  
Valid: 20240322 - 20240328



Rainfall deficit of 40-80mm over most parts of the country.

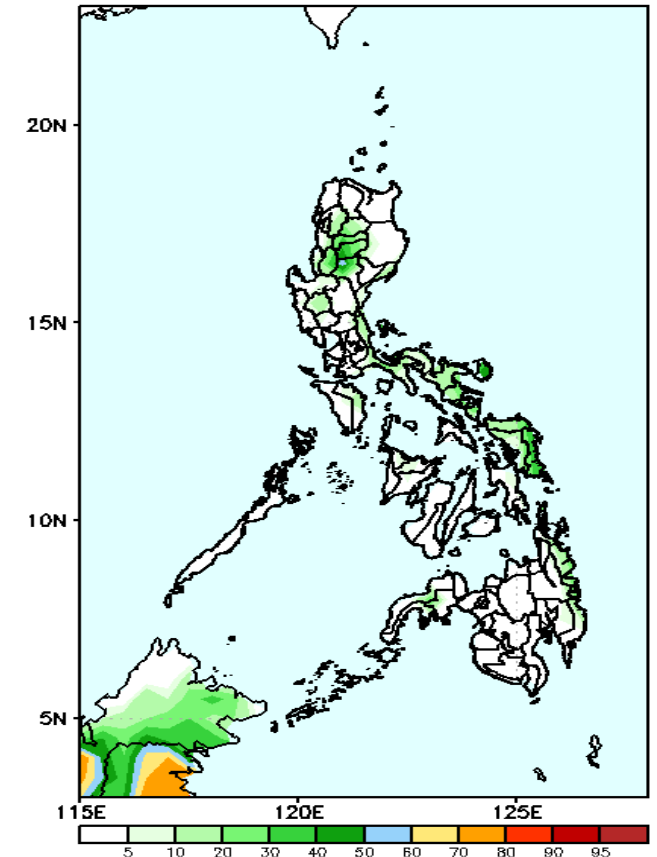
GEFS Week-1 Exceedance Prob. > 25mm  
Valid: 20240322 - 20240328



Probability to Exceed 25mm

- Low to moderate over some areas in CAR, Nueva Vizcaya, Catanduanes and Eastern Samar;
- Low over the rest of the country.

GEFS Week-1 Exceedance Prob. > 50mm  
Valid: 20240322 - 20240328



Probability to Exceed 50mm

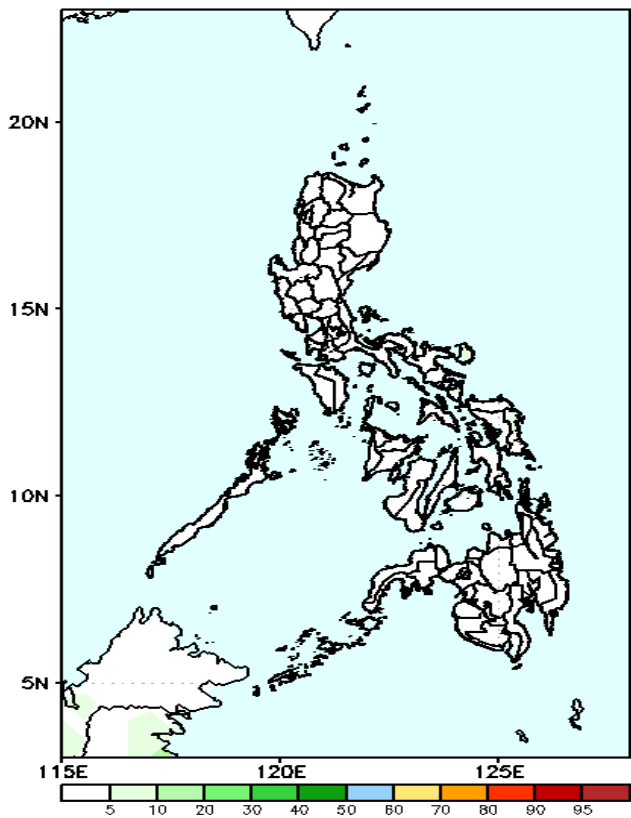
- Low across the country.

# Exceedance Probability > 100/150/200 mm

Week 1: Mar 22-28, 2024

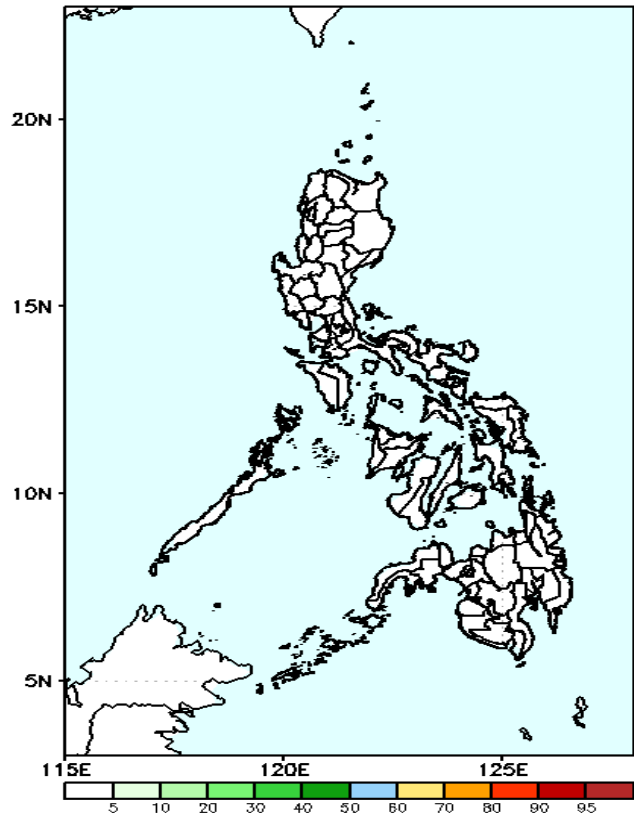
- Very high probability
- High Probability
- Moderate Probability
- Low Probability

GEFS Week-1 Exceedance Prob. > 100mm  
Valid: 20240322 - 20240328



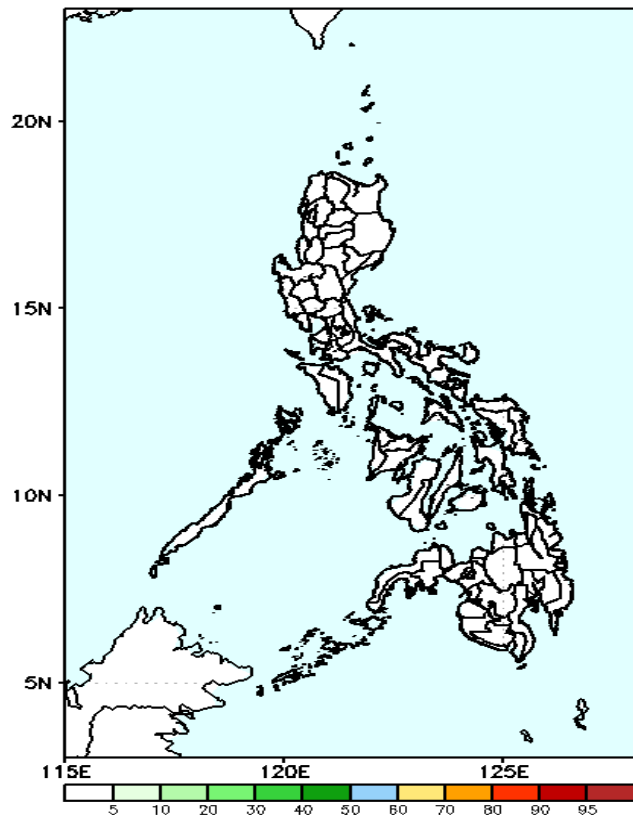
Probability to Exceed 100mm  
• Low across the country.

GEFS Week-1 Exceedance Prob. > 150mm  
Valid: 20240322 - 20240328



Probability to Exceed 150mm  
• Low across the country.

GEFS Week-1 Exceedance Prob. > 200mm  
Valid: 20240322 - 20240328



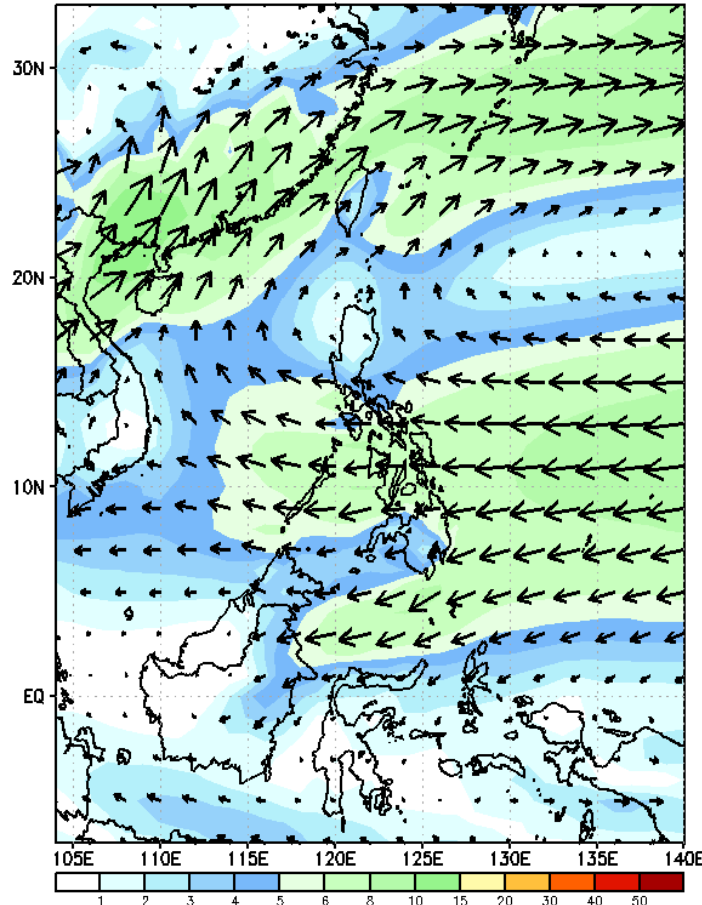
Probability to Exceed 200mm  
• Low across the country.



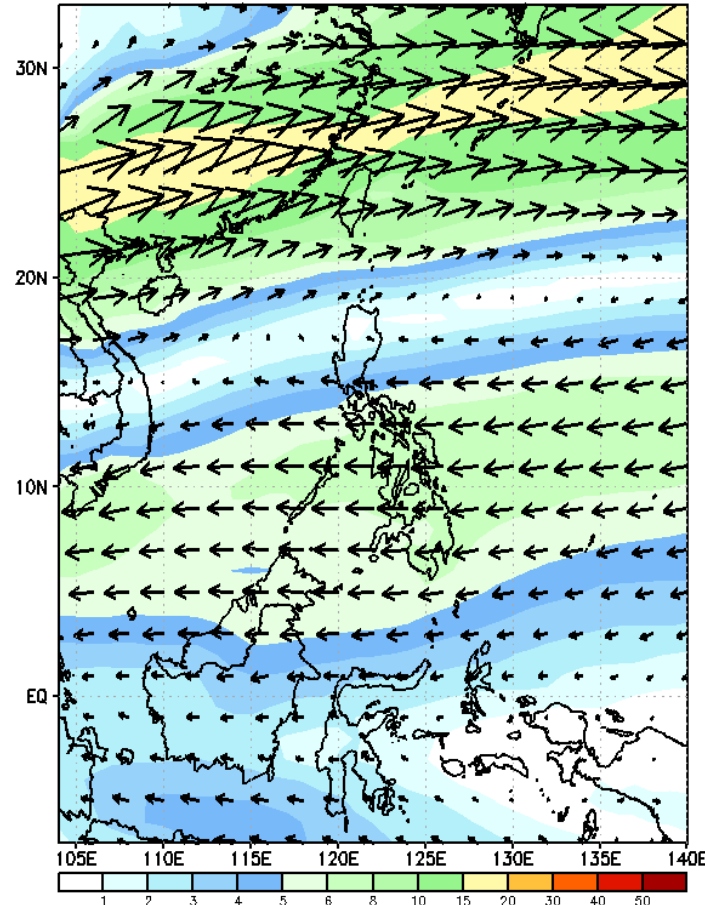
# GEFS Week-2 Forecasts: Wind Forecast

Week 2: Mar 29- Apr 04, 2024

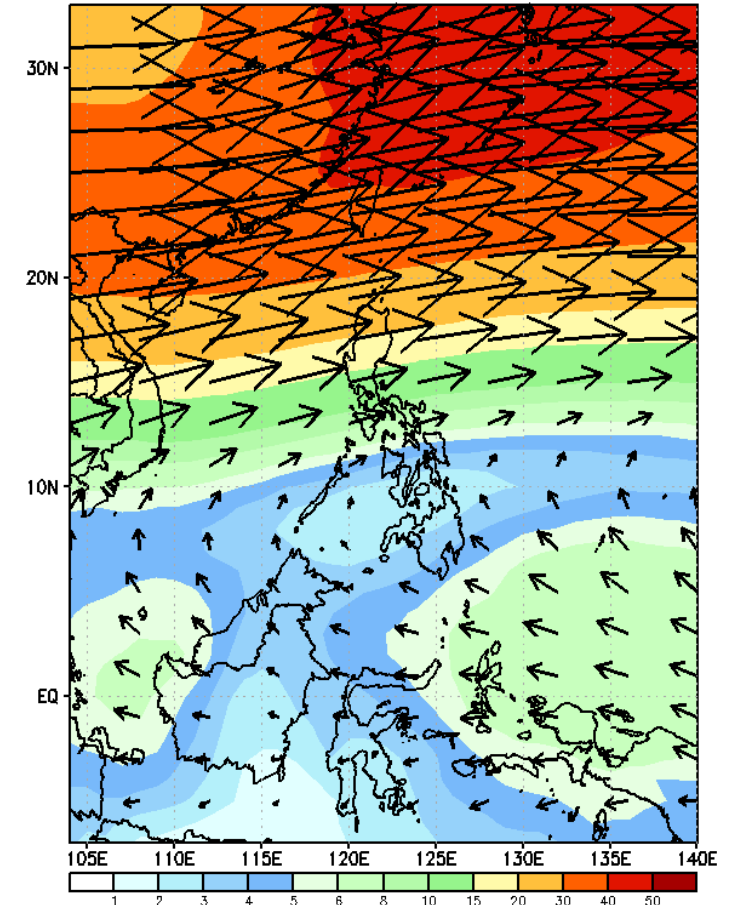
GEFS Week-2 850-hPa Wind Total  
Valid: 20240329 - 20240404



GEFS Week-2 700-hPa Wind Total  
Valid: 20240329 - 20240404

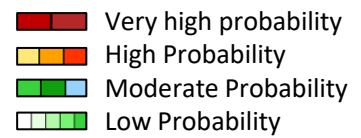


GEFS Week-2 200-hPa Wind Total  
Valid: 20240329 - 20240404



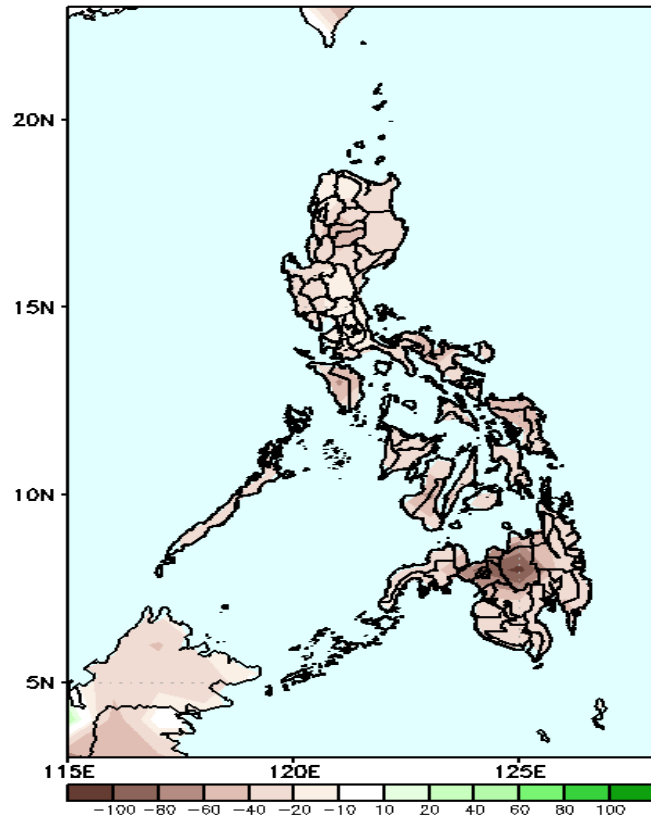
Easterlies will likely affect most parts of the country. Expect dry and warm days during the forecast period.

# Precipitation Anomaly and Exceedance Probability > 25/50 mm



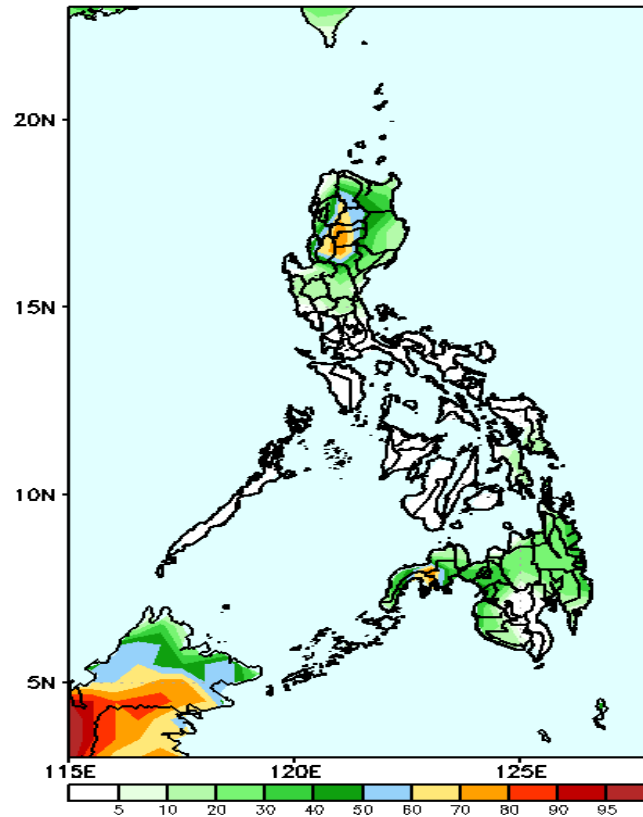
Week 2: Mar 29- Apr 04, 2024

GEFS Week-2 Precip Anomaly  
Valid: 20240329 - 20240404



Rainfall deficit of 40-100mm over most parts of the country.

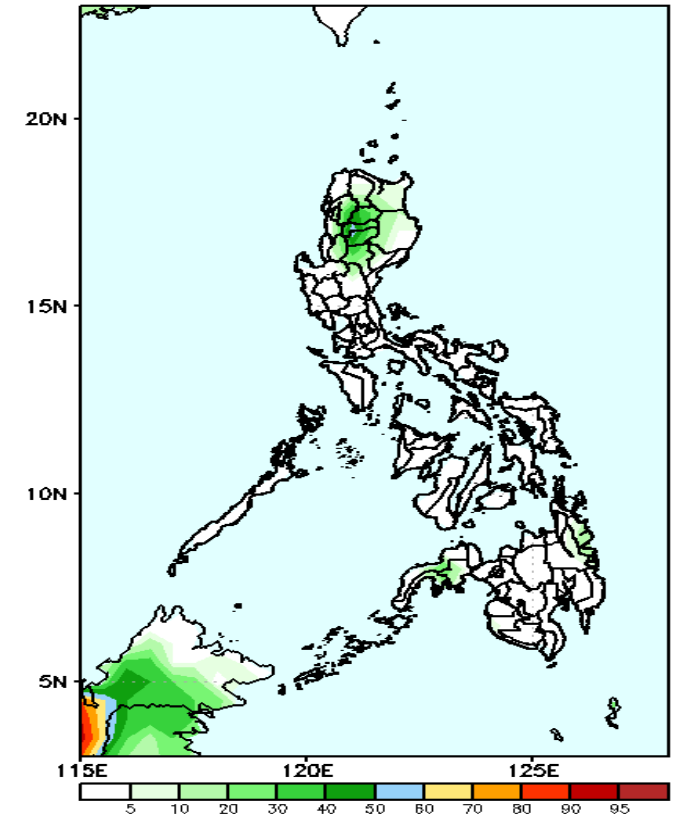
GEFS Week-2 Exceedance Prob. > 25mm  
Valid: 20240329 - 20240404



## Probability to Exceed 25mm

- Moderate to high over most parts of CAR, La Union, Nueva Vizcaya, and portions of Zamboanga Peninsula;
- Low to moderate over the rest of Northern and Central Luzon and the rest of Mindanao;
- Low over the rest of the country.

GEFS Week-2 Exceedance Prob. > 50mm  
Valid: 20240329 - 20240404



## Probability to Exceed 50mm

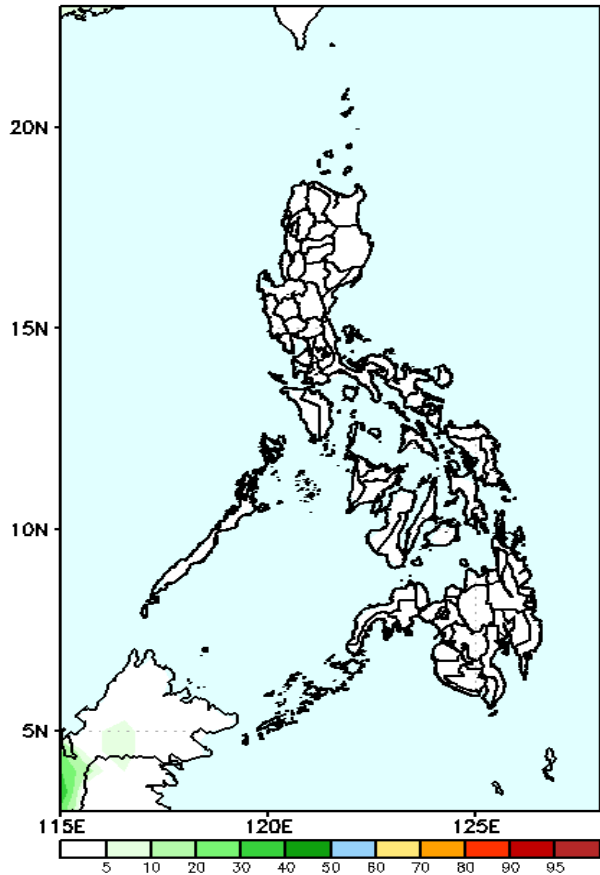
- Low to moderate over some areas in CAR and Nueva Vizcaya;
- Low across the country.

# Exceedance Probability > 100/150/200 mm

Week 2: Mar Mar 29- Apr 04, 2024

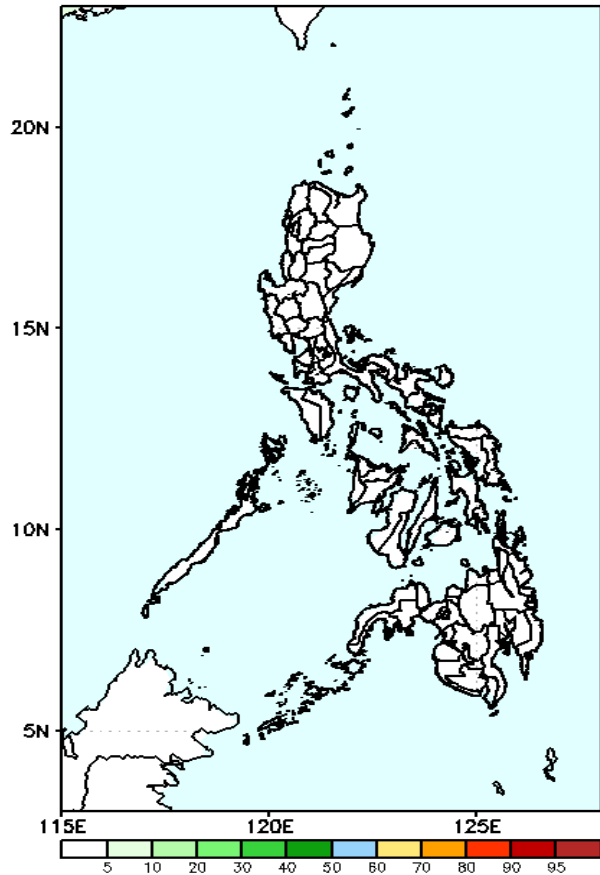
- Very high probability
- High Probability
- Moderate Probability
- Low Probability

GEFS Week-2 Exceedance Prob. > 100mm  
Valid: 20240329 - 20240404



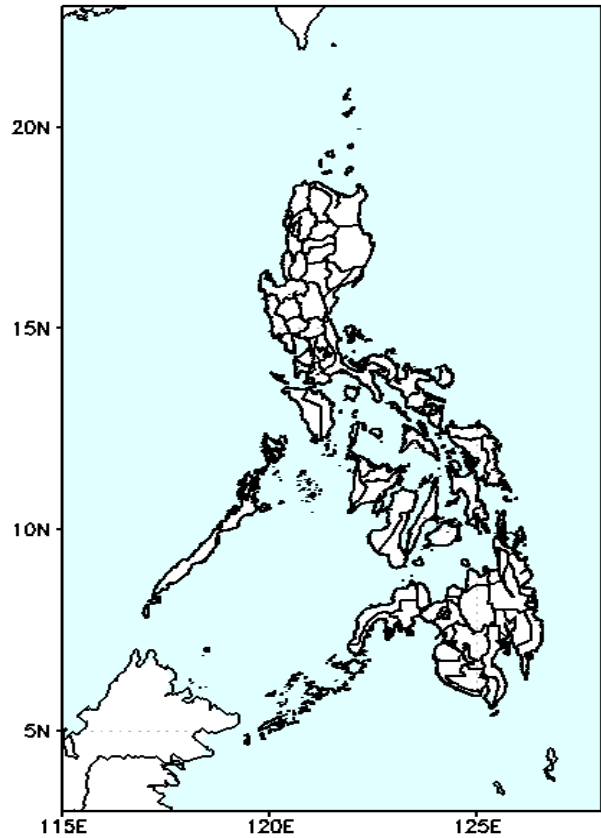
**Probability to Exceed 100mm**  
• Low across the country.

GEFS Week-2 Exceedance Prob. > 150mm  
Valid: 20240329 - 20240404



**Probability to Exceed 150mm**  
• Low across the country.

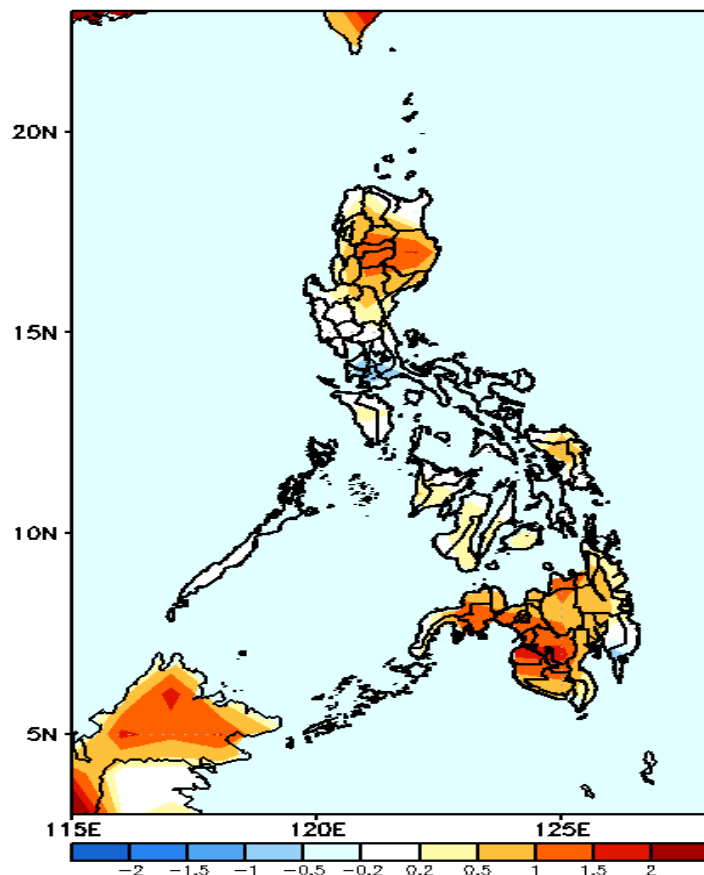
GEFS Week-2 Exceedance Prob. > 200mm  
Valid: 20240329 - 20240404



**Probability to Exceed 200mm**  
• Low across the country.

# GEFS Week-1 & 2 Forecasts: T2m Anomaly

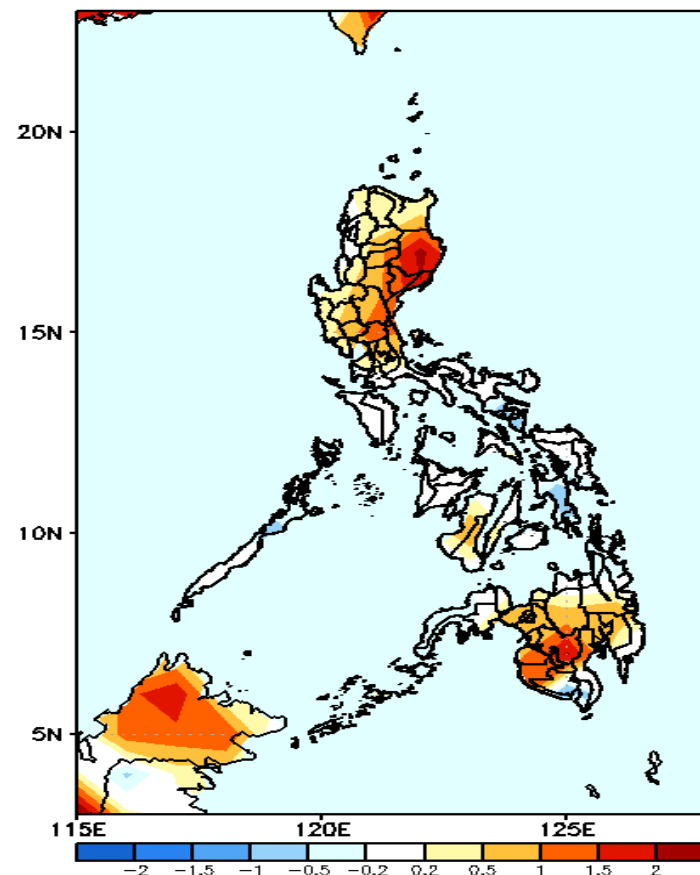
GEFS Week-1 T2m Anomaly  
Valid: 20240322 – 20240328



## 2m Temperature Week 1: Mar 22-28, 2024

Near to warmer than average surface air temperature will likely be experienced in most parts of the country.

GEFS Week-2 T2m Anomaly  
Valid: 20240329 – 20240404



## 2m Temperature Week 2: Mar 29- Apr 04, 2024

Near to warmer than average surface air temperature will likely be experienced in most parts of the country.