



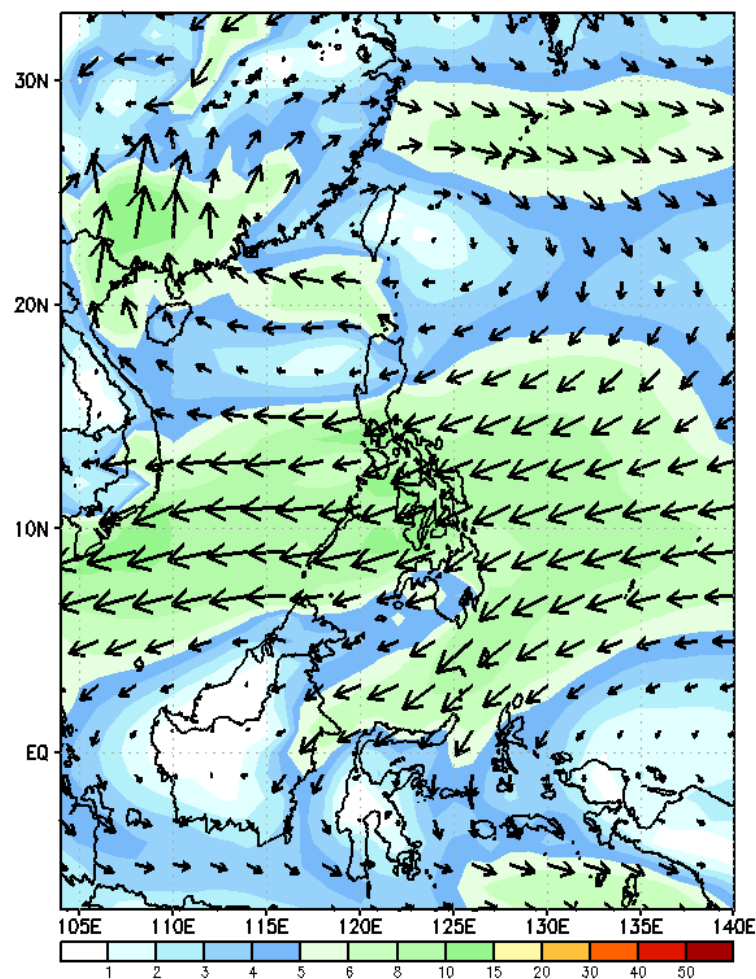
Week 1 & Week 2 Forecast for the Philippines using GEFS Model



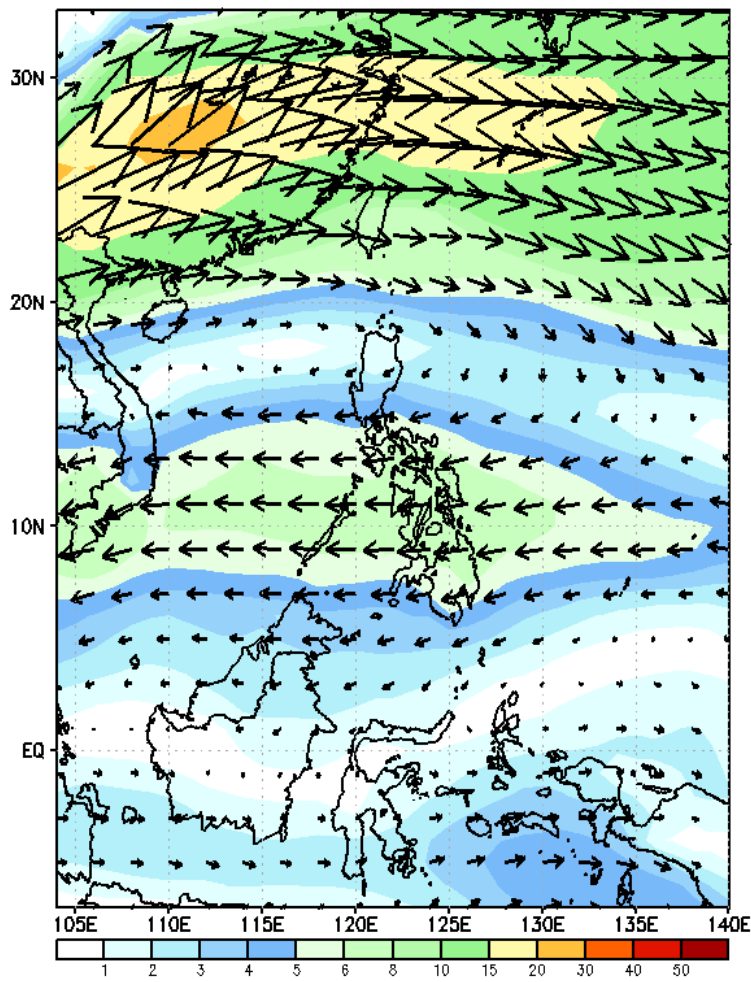
GEFS Week-1 Forecasts: Wind Forecast

Week 1: February 23-29, 2024

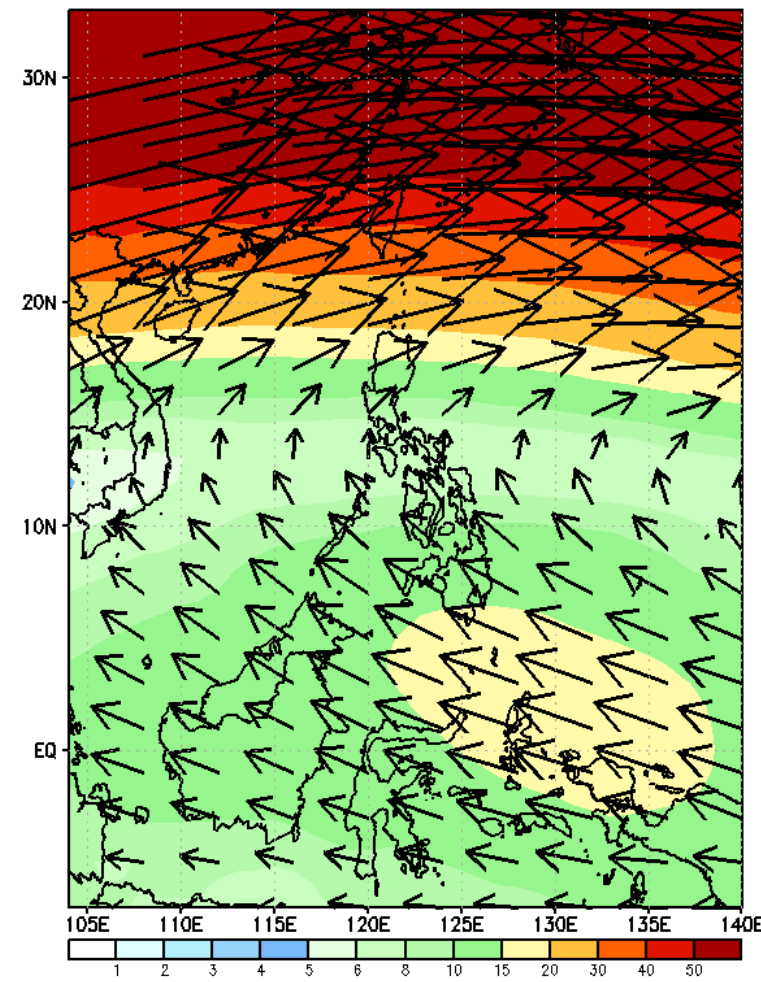
GEFS Week-1 850-hPa Wind Total
Valid: 20240223 - 20240229



GEFS Week-1 700-hPa Wind Total
Valid: 20240223 - 20240229



GEFS Week-1 200-hPa Wind Total
Valid: 20240223 - 20240229



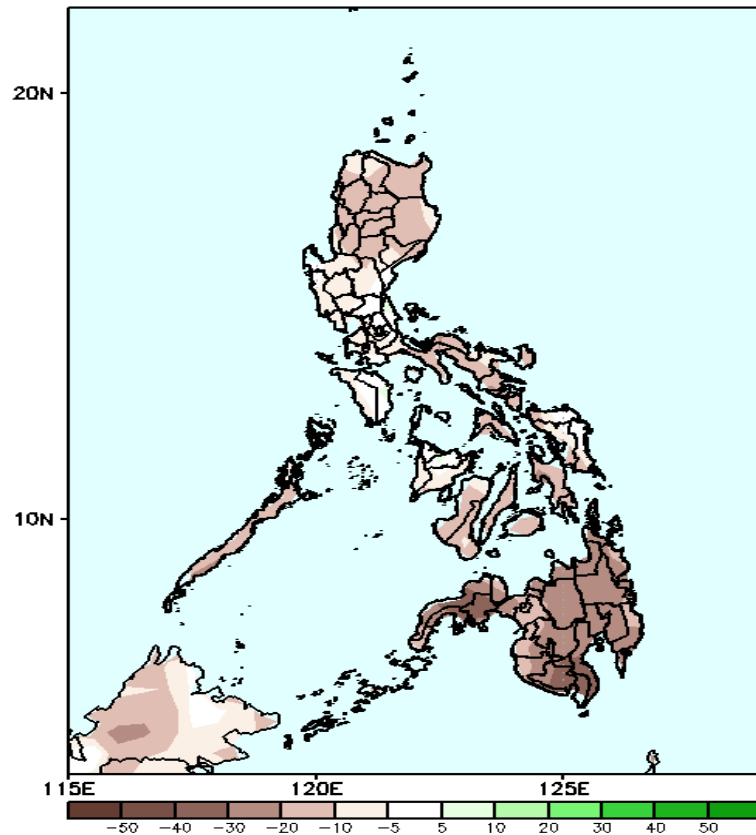
Northeast Monsoon affecting Northern Luzon; Easterlies for the rest of the country.

Precipitation Anomaly and Exceedance Probability > 25/50 mm



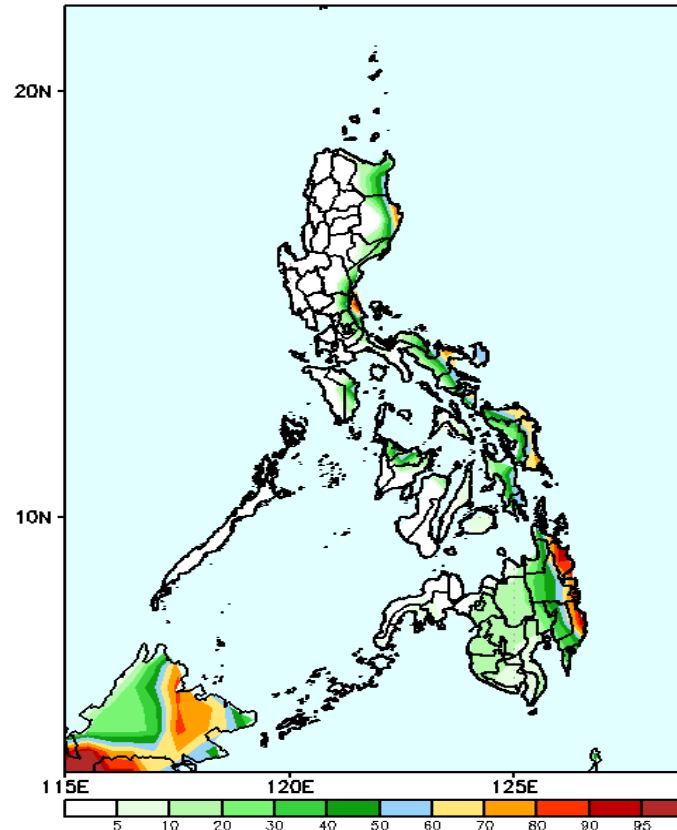
Week 1: February 23-29, 2024

GEFS Week-1 Precip. Anomaly
Valid: 20240223 - 20240229



Rainfall deficit of 40-100mm in most parts of the country is expected.

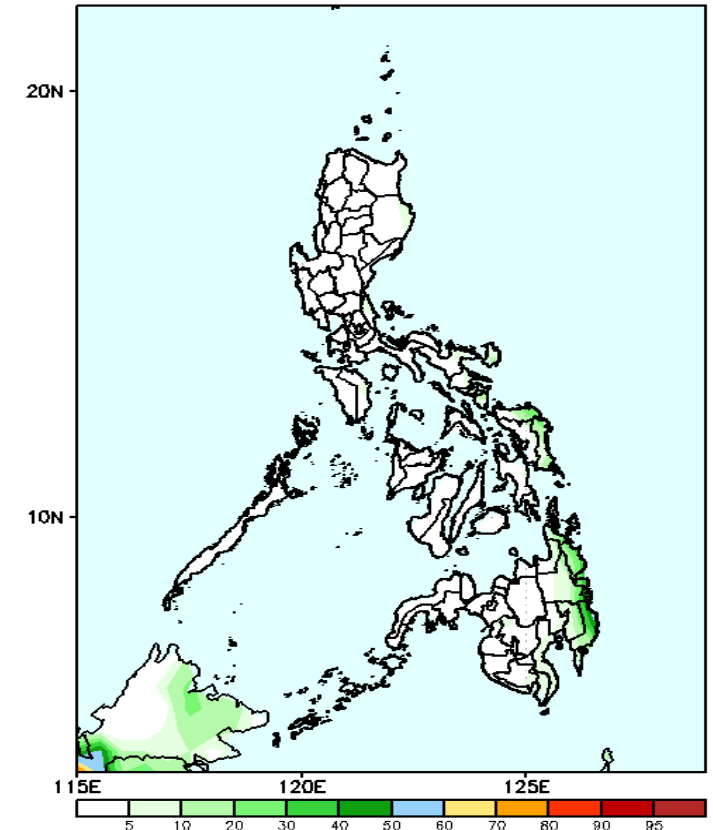
GEFS Week-1 Exceedance Prob. > 25mm
Valid: 20240223 - 20240229



Probability to Exceed 25mm

- Moderate to high over the easternmost of the country;
- Low to moderate over the rest of Eastern Visayas and Eastern Mindanao;
- Low over the rest of the country.

GEFS Week-1 Exceedance Prob. > 50mm
Valid: 20240223 - 20240229



Probability to Exceed 50 mm

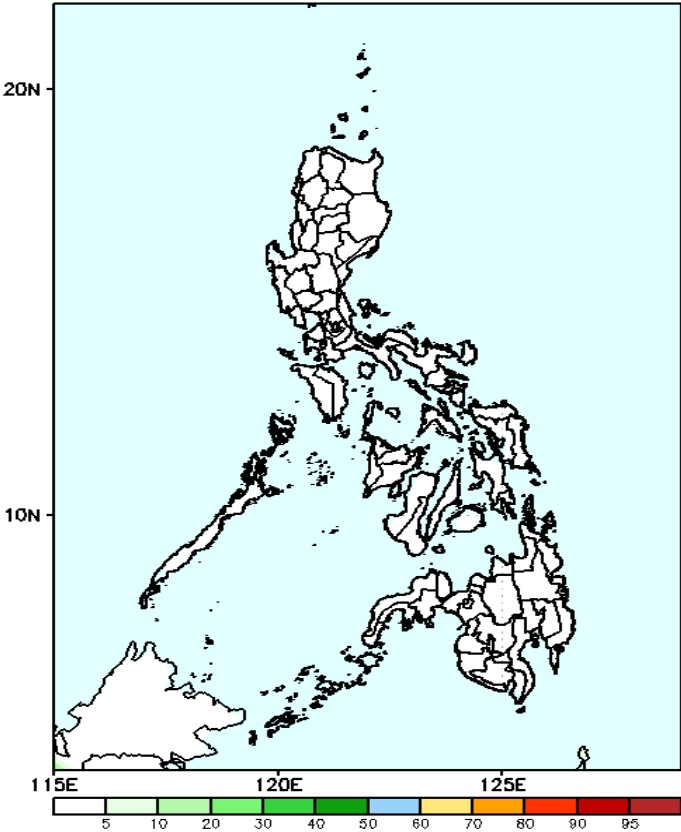
- Low to moderate over the easternmost of Mindanao;
- Low over the rest of the country.

Exceedance Probability > 100/150/200 mm

Week 1: February 23-29, 2024

- Very high probability
- High Probability
- Moderate Probability
- Low Probability

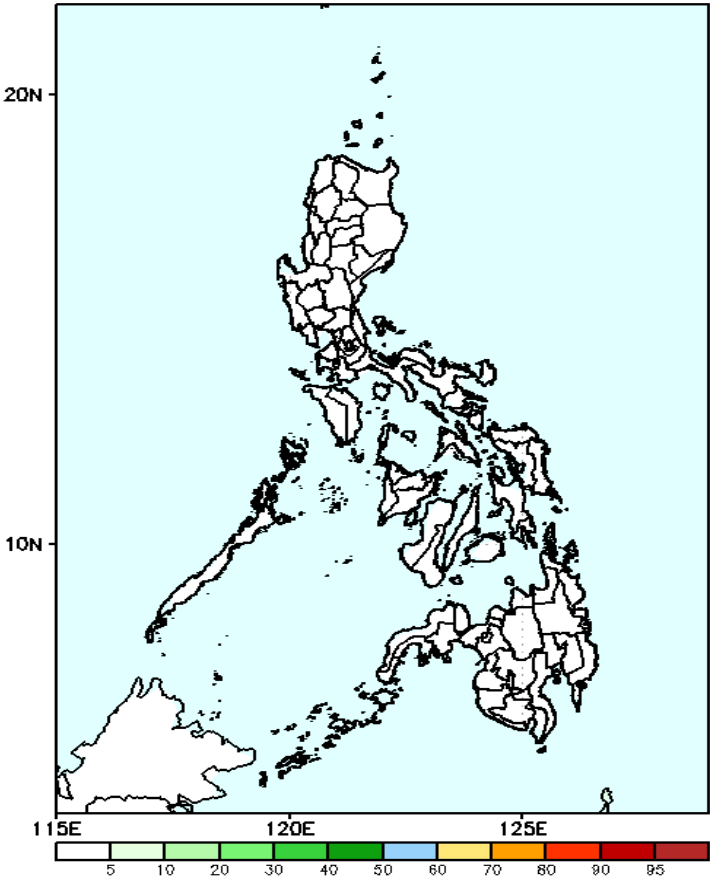
GEFS Week-1 Exceedance Prob. > 100mm
Valid: 20240223 - 20240229



Probability to Exceed 100mm

- Low across the country.

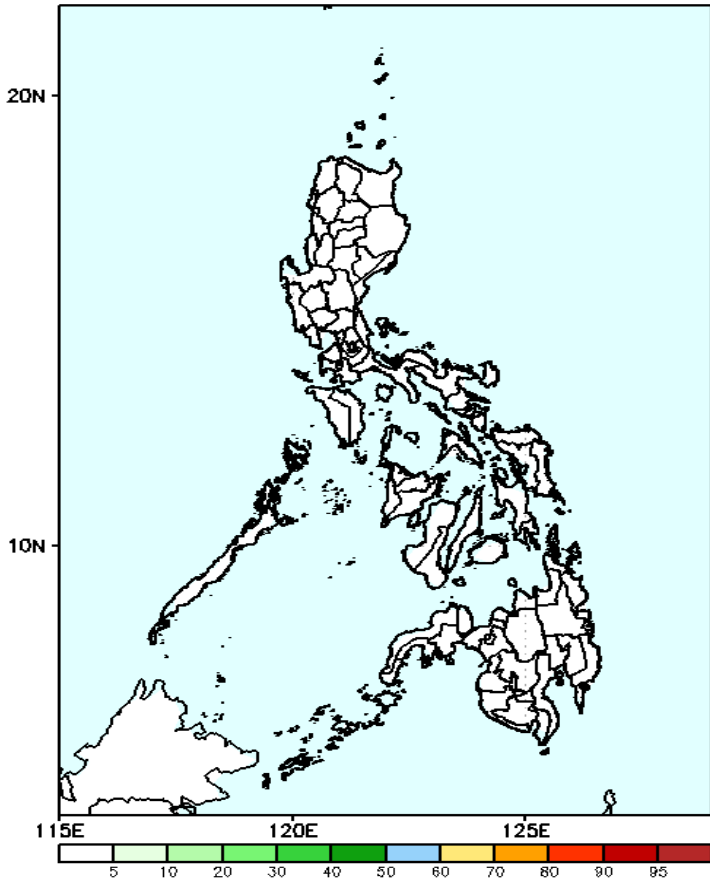
GEFS Week-1 Exceedance Prob. > 150mm
Valid: 20240223 - 20240229



Probability to Exceed 150mm

- Low across the country.

GEFS Week-1 Exceedance Prob. > 200mm
Valid: 20240223 - 20240229



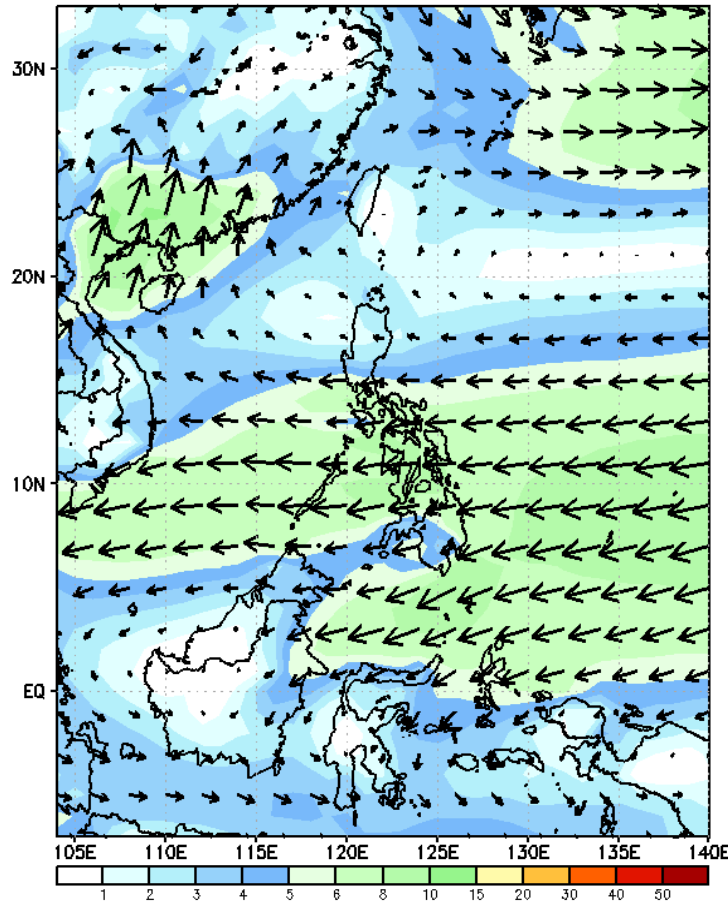
Probability to Exceed 200mm

- Low across the country.

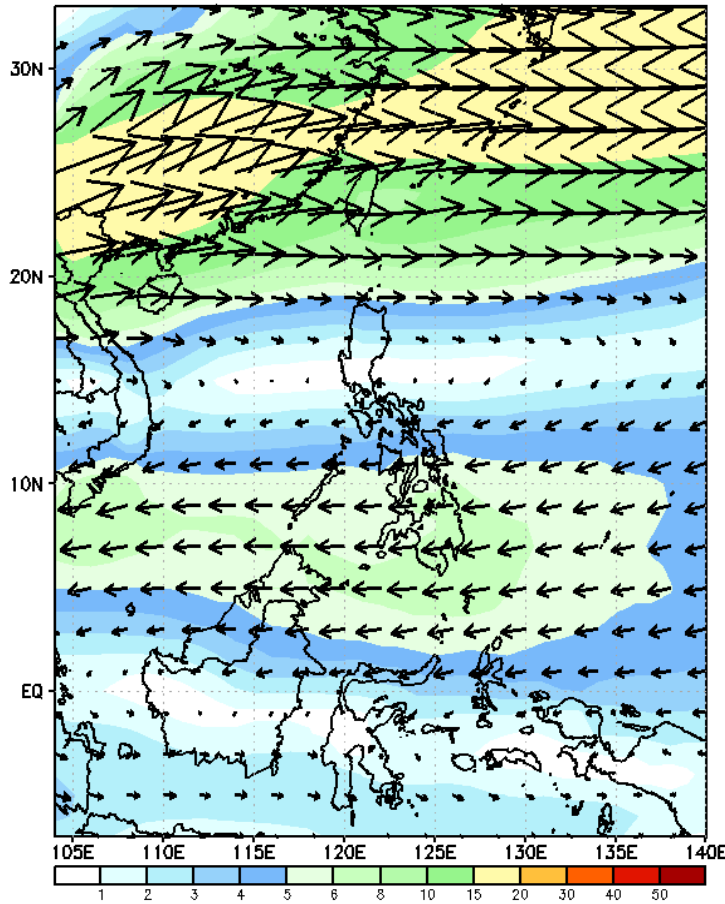
GEFS Week-2 Forecasts: Wind Forecast

Week 2: Mar 01-07 2024

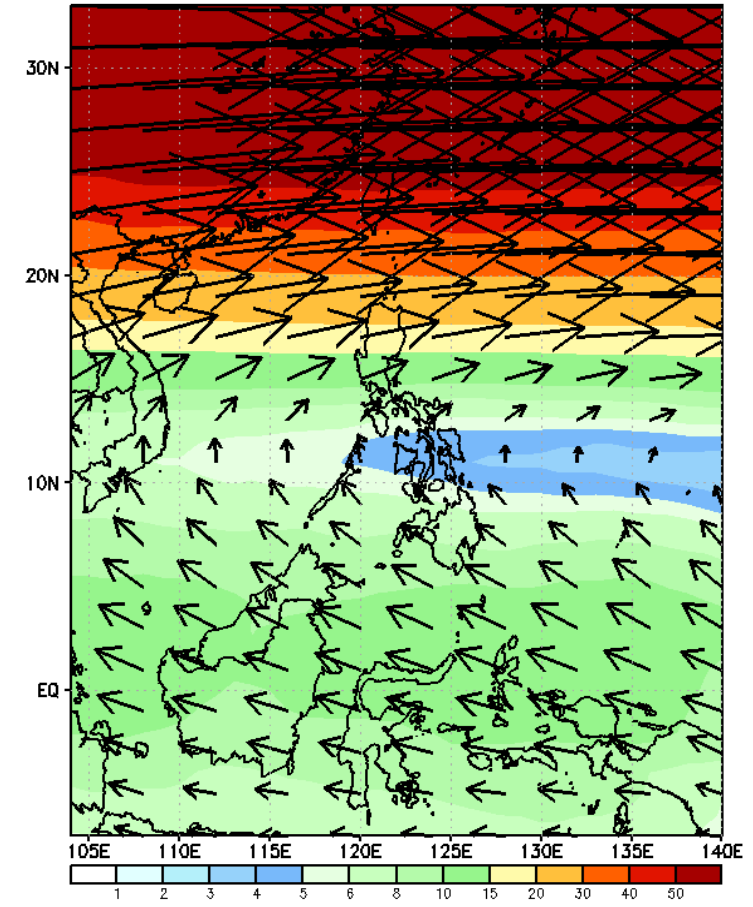
GEFS Week-2 850-hPa Wind Total
Valid: 20240301 - 20240307



GEFS Week-2 700-hPa Wind Total
Valid: 20240301 - 20240307

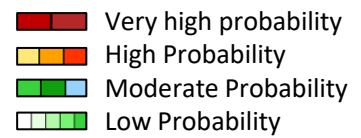


GEFS Week-2 200-hPa Wind Total
Valid: 20240301 - 20240307



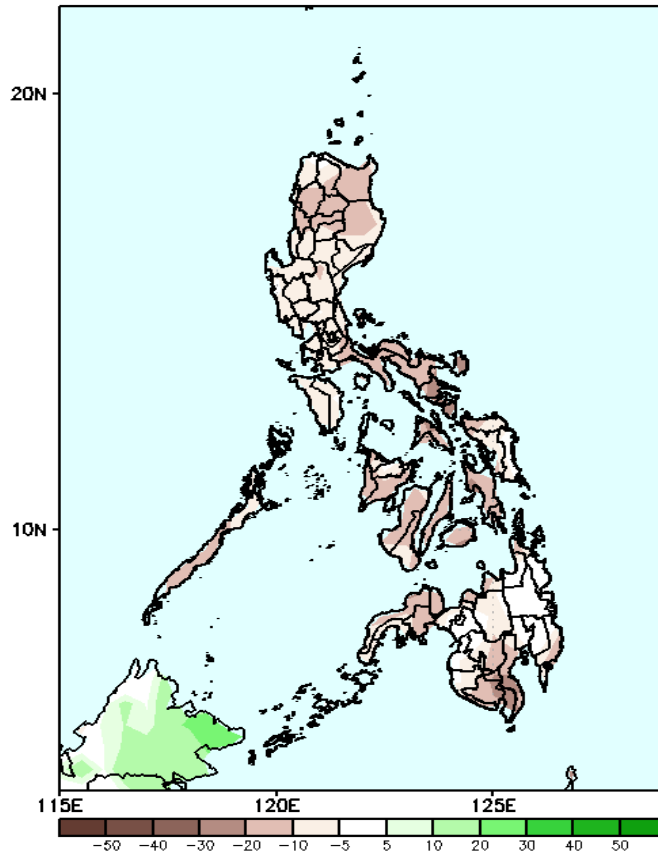
Easterlies will likely affect most parts of the country.

Precipitation Anomaly and Exceedance Probability > 25/50 mm

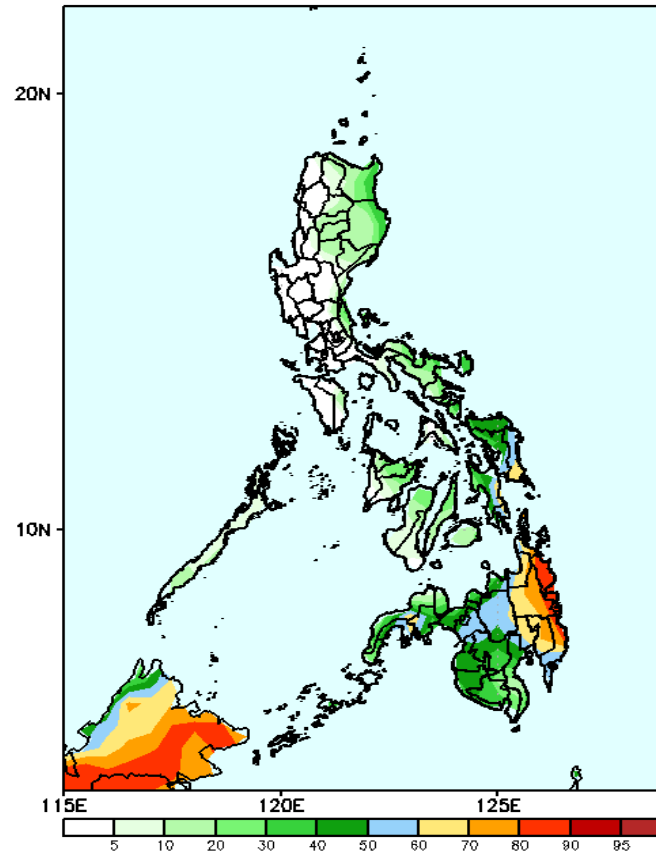


Week 2: Mar 01-07 2024

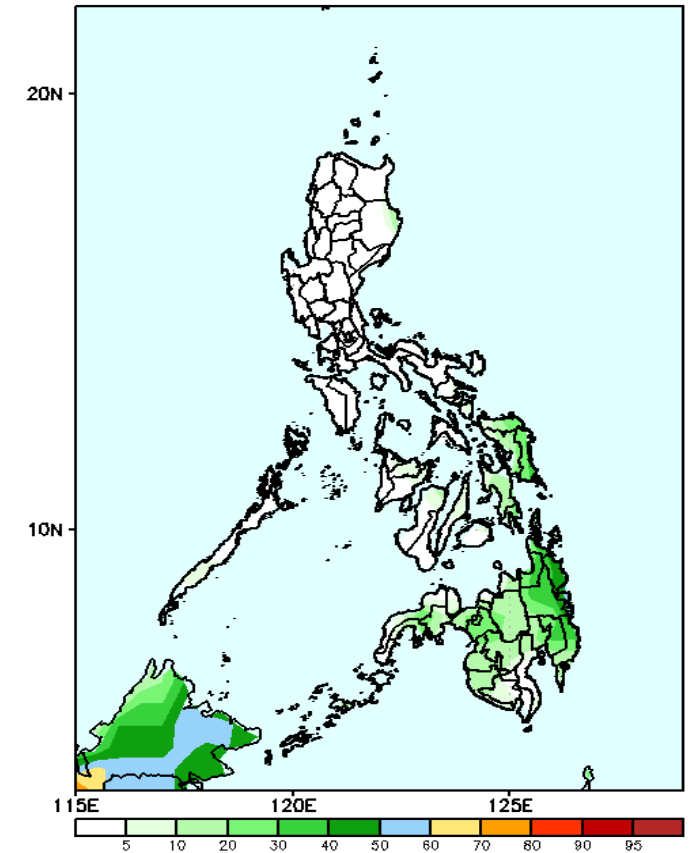
GEFS Week-2 Precip. Anomaly
Valid: 20240301 – 20240307



GEFS Week-2 Exceedance Prob. > 25mm
Valid: 20240301 – 20240307



GEFS Week-2 Exceedance Prob. > 50mm
Valid: 20240301 – 20240307



Rainfall deficit of 20-80mm in most parts of the country is likely.

Probability to Exceed 25mm

- High to very high over Surigao provinces and the northern portion of Davao Oriental;
- Moderate to high over Eastern Visayas and the rest of Mindanao;
- Low over the rest of the country.

Probability to Exceed 50mm

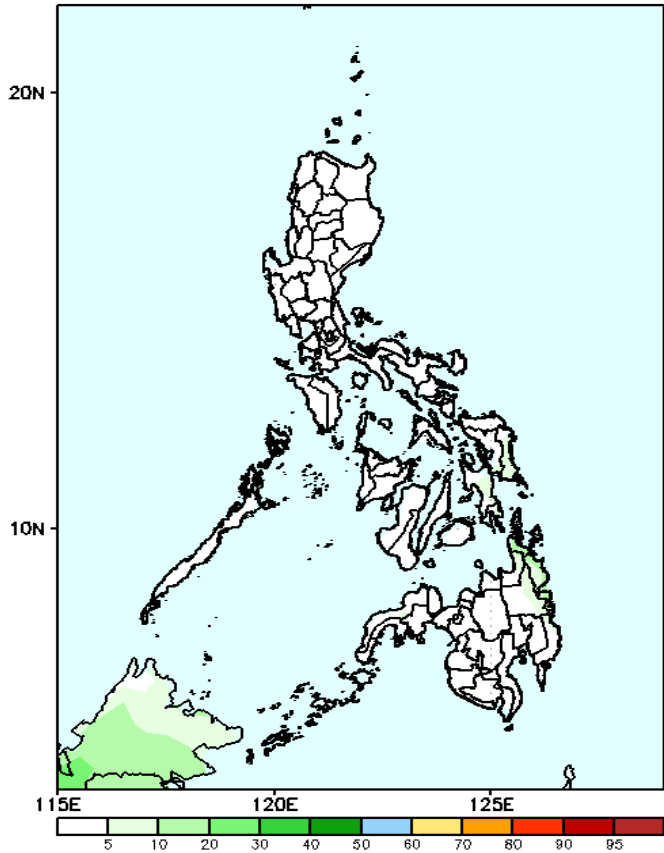
- Low to moderate over Caraga;
- Low over the rest of the country.

Exceedance Probability > 100/150/200 mm

Week 2: Mar 01-07 2024

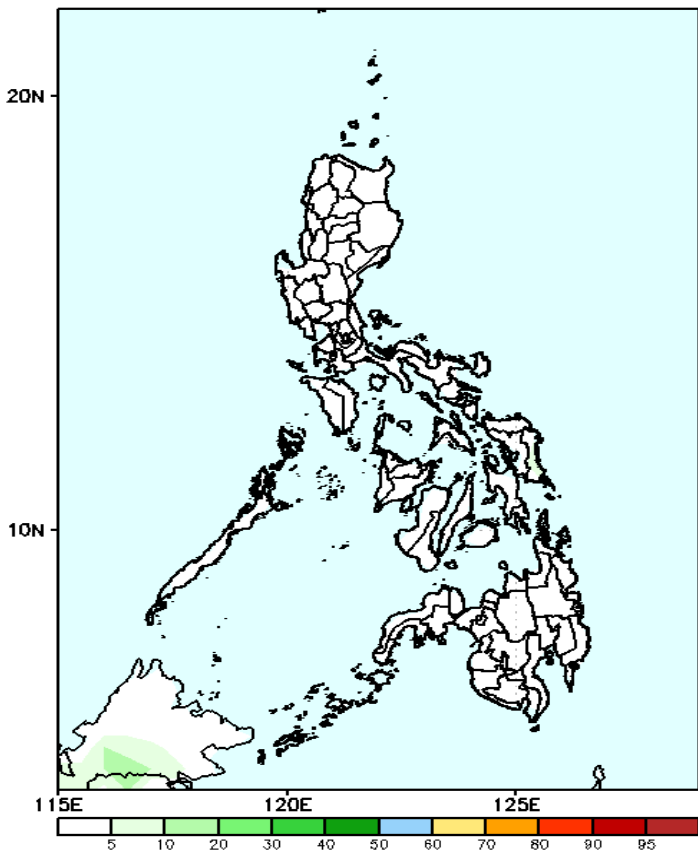
- Very high probability
- High Probability
- Moderate Probability
- Low Probability

GEFS Week-2 Exceedance Prob. > 100mm
Valid: 20240301 – 20240307



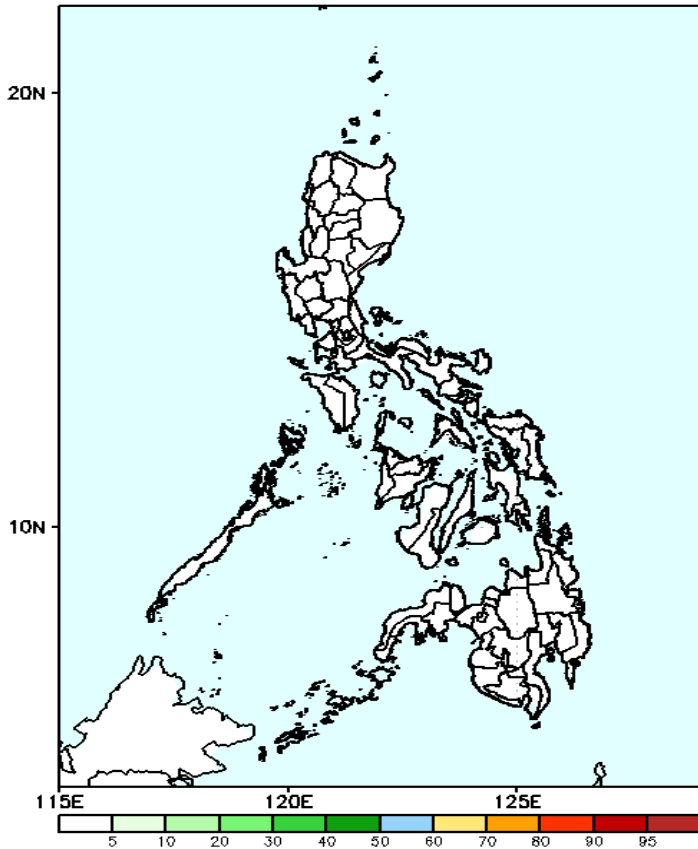
Probability to Exceed 100mm
• Low across the country.

GEFS Week-2 Exceedance Prob. > 150mm
Valid: 20240301 – 20240307



Probability to Exceed 150mm
• Low across the country.

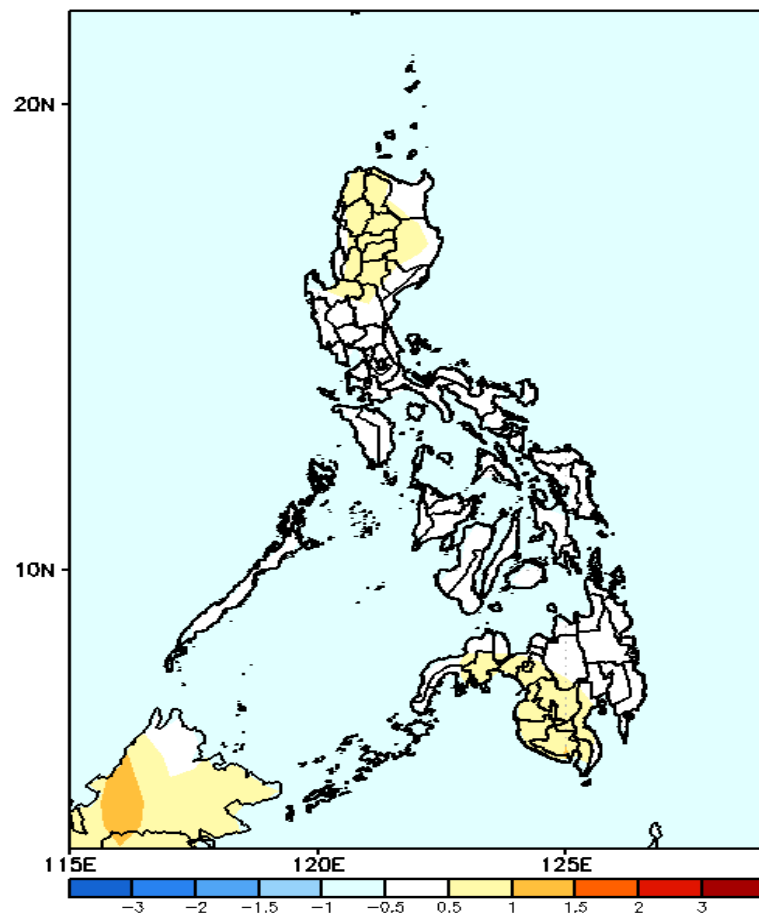
GEFS Week-2 Exceedance Prob. > 200mm
Valid: 20240301 – 20240307



Probability to Exceed 200mm
• Low across the country.

GEFS Week-1 & 2 Forecasts: T2m Anomaly

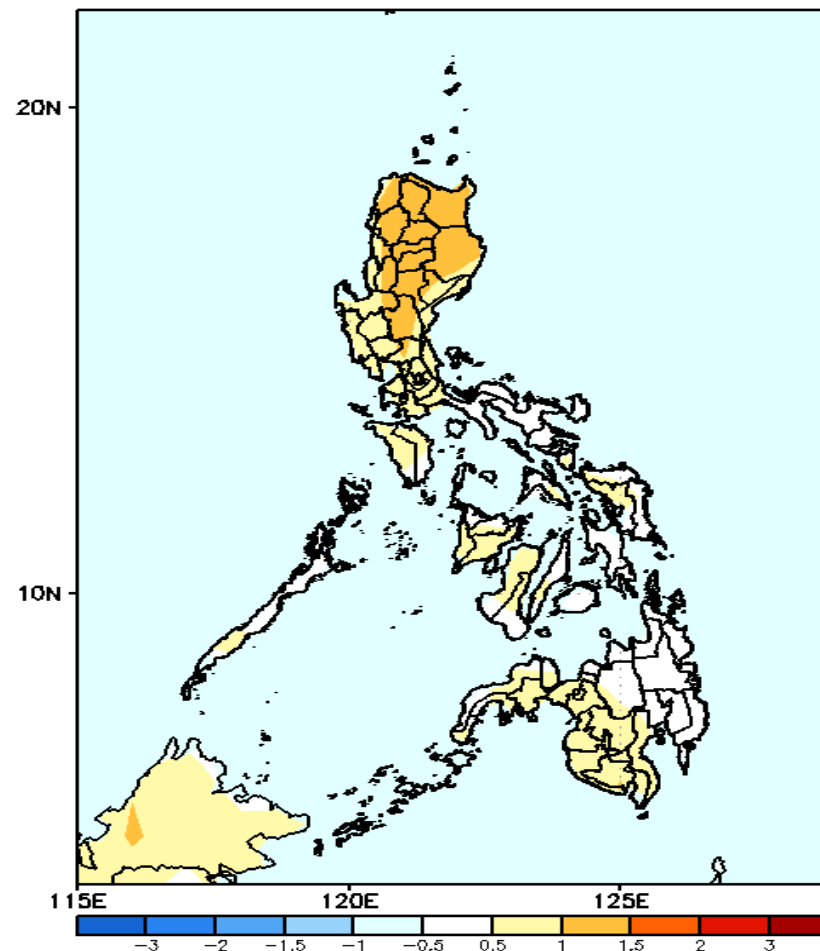
GEFS Week-1 T2m Anomaly
Valid: 20240223 – 20240229



2m Temperature Week 1: February 23-29, 2024

Average to slightly warmer than average surface air temperature will likely be experienced in most parts of the country.

GEFS Week-2 T2m Anomaly
Valid: 20240301 – 20240307



2m Temperature Week 2: Mar 01-07 2024

Average to warmer than average surface air temperature will likely be experienced in most parts of the country.